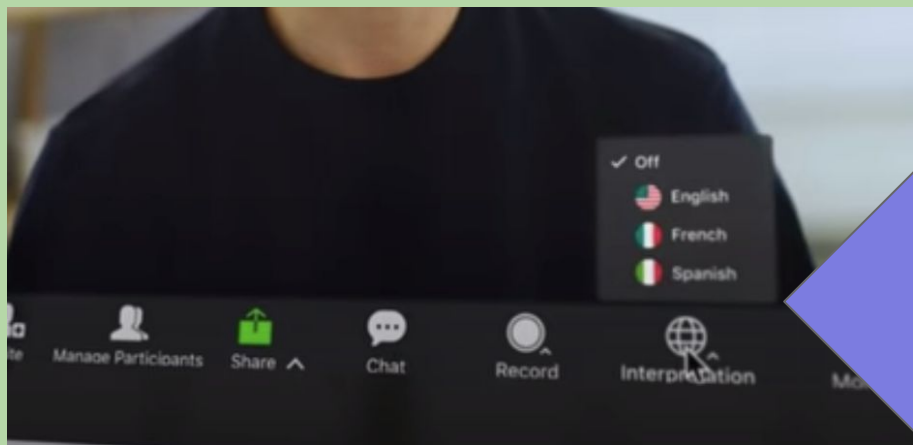


WELCOME TO OUR MPCSD SPANISH IMMERSION COMMUNITY!



TRADUCCIÓN EN ESPAÑOL ESTÁ DISPONIBLE



Selecione el icono
de "interpretación" y
selecione español.

PROGRAM LOCATIONS AND INTRODUCTIONS



Encinal School

- Principal Sharon Burns

- 1-2 SI Classes at each grade level
- K-5 School
- Located on Middlefield and Encinal Ave, Menlo Park
- Student Body - about 640 students



Laurel School

- Principal Linda Creighton

- 2 SI Classes at each grade level
- K-5 School Across Two Campuses
- K-2 on Edge Road in Atherton
- 3-5 on Elliott Drive in Menlo Park
- Student Body - about 640 (320 at each campus)



AGENDA

Welcome and Introductions

What is Spanish Immersion?

Program Features

Changes due to Covid 19

World Language

Considerations

Is Immersion best for my child?

Procedures and Next Steps

Questions

POLL # 1- PRIMARY LANGUAGE

SPANISH IMMERSION

- A method of instruction
- Students are mainly taught in Spanish
- English is added incrementally as students progress through grades



PROGRAM GOALS

- Academic Excellence
- Bilingualism/Biliteracy
- Multicultural Competence
- Biliteracy Attainment Award in 8th grade



POLL # 2- SIBLINGS

is my

SUPERPOWER!

I see issues
through different
perspectives



I use
BOTH
of my
languages to
think+ learn

I'll have
more **job**
opportunities



I have a
UNIQUE WAY
of looking at +



"TO HAVE ANOTHER LANGUAGE
IS TO POSSESS ANOTHER SOUL."
~Charlemagne

MY LANGUAGES
open the
DOOR to
CENTURIES
of **IDEAS,**
HISTORY,
CULTURE
and
knowledge



RESEARCH
SAYS MY
BILINGUAL
BRAIN
is...



great
at



COMM
WI
4
mil
SPA
SPE
& **1**
BIL
Eng
SPE
AR
the

HISTORY

2008-2009

- Two kindergarten classes open at Encinal
- 2 Immersion teachers
- 48 students

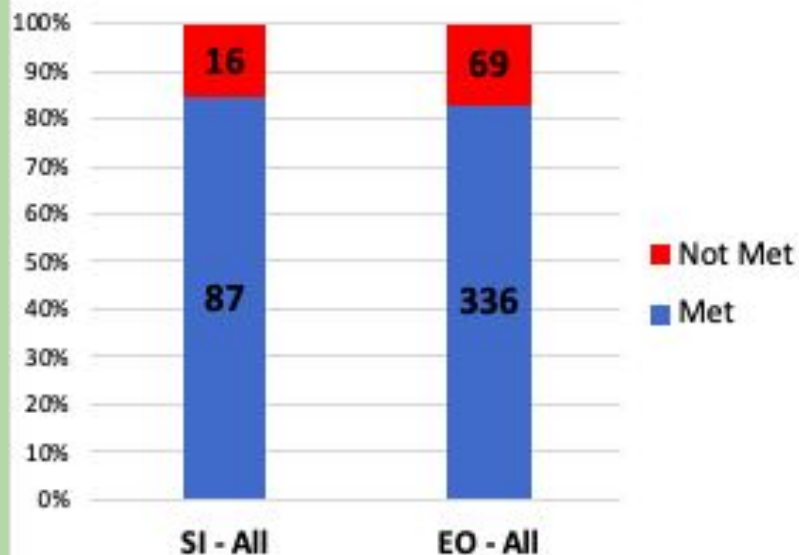
2021-22

- K-5 program at Encinal and Laurel
- 6-8 Spanish for Spanish Speakers elective
- 23 Immersion teachers
- 463 Immersion students

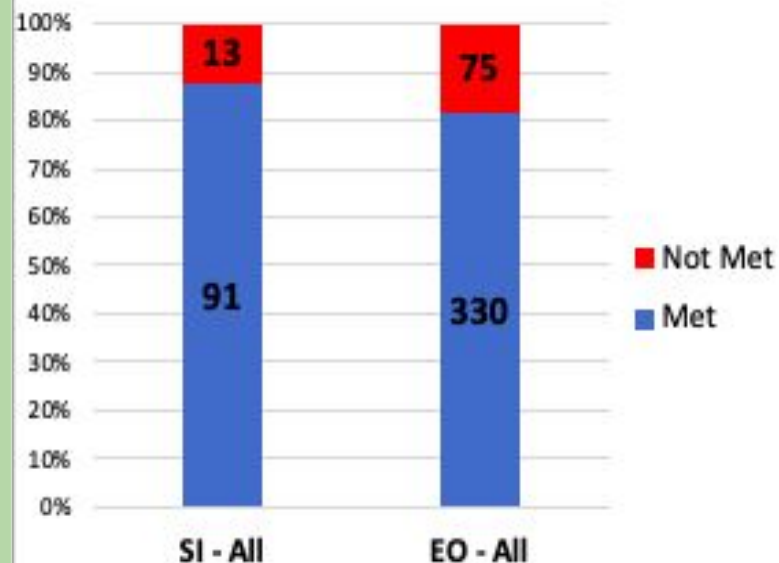


SMARTER BALANCED STATE ASSESSMENT: ELA/MATH 3RD-5TH GRADE

2018-2019 ELA



2018-2019 Math



MPCSD Spanish Immersion Program

EXTRA SUPPORT

- Same curriculum (but in Spanish) and specialists (in English) as all MPCSD students
- Bilingual Reading Specialists
 - Considered only if child is reading below grade level in BOTH languages. Otherwise, it's more of a vocabulary development need, not a reading need.
- Amity Interns* and Bilingual Instructional Aides as additional layer of support

*not available during pandemic

INTERNS

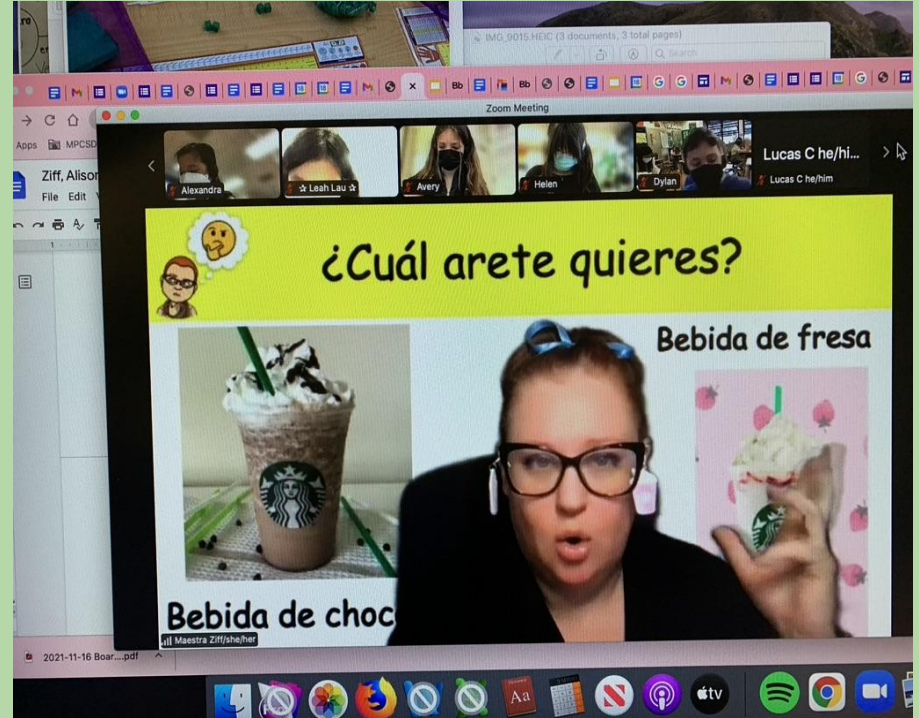


Cultural Activities



WORLD LANGUAGE

- FLEX Language program: Language Exposure
- Alternative to Immersion
- K-5 program at all schools-Virtual and In person model
- 6-8 Spanish, S4SS, and French



CONSIDERATIONS

Families who choose to enroll their children in the immersion program should know the following:

- Twins
- No sibling or language priority
- Cohort, class sizes and configuration may vary
- Program is K-5 with a middle school elective class
- Ongoing challenges to recruit and retain highly qualified bilingual teachers and support staff

CONSIDERATIONS

Families who choose to enroll their children in the immersion program should know the following:

- Social-Emotional considerations of a class(es) together for 6 years
 - students develop sibling-like relationships
 - limited opportunities for mixing with EO strands
 - students learn acceptance and peer resolution skills at a deep level

POLL # 3- FIRST TIME IN KINDERGARTEN

WHAT TYPE OF STUDENT IS SUCCESSFUL IN IMMERSION?

- Strong language base in primary language - either Spanish or other language
- Transitions easily
- Comfortable with the unknown
- Resilient
- Accommodating of different personalities*
- Strong family commitment to the long-term goals

PROCEDURES AND NEXT STEPS

- Attend ONE Mandatory Spanish Immersion Parent meeting
 - *Add your child's full name in the chat box to indicate you have attended this meeting
- Must register for Kindergarten and Spanish Immersion program during priority registration period
- Registration Procedures

LOTTERY SPECIFICS

- Lottery (if needed) - **2023 Date TBD**
- Acceptance/Waitlist number sent via email - complete the Google form ASAP
- Accept or decline within two weeks (14 days)
- Failure to accept within 14 days forfeits your child's waitlist spot
- Failure to remain enrolled in the school and the MPCSD forfeits your child's waitlist spot

INCOMING K MANDATORY SPANISH IMMERSION PARENT MEETING DATES

2023 Meeting Dates TBD



QUESTIONS

