

ADDENDUM NO. 1

To the Contract Documents for:

Menlo Park City School District

Oak Knoll Elementary School & Laurel Elementary School

ELC Playgrounds
Bid #004-2019-03

June 13, 2019

This addendum shall supersede all previously issued specifications, addenda and drawings. All other conditions remain unchanged. The following clarifications, changes, modifications, corrections and/or additions as set forth herein shall apply to the above documents and shall be made a part thereof and shall be subject to all the requirements thereof as though originally specified and/or shown.

This addendum consists of **2** pages, plus attachments.

Attachments:

Bid Announcement: Notice Inviting Bids (2 pages).

Project Manual: *(Same notice as above)*.

Drawing Sheets: Bid Documents (5 pages).

CHANGES TO THE BID ANNOUNCEMENT:

Item No 0.1

Reference: Notice Inviting Bids

Description: **REPLACE** the previous Notice Inviting Bids with the *revised* Notice Inviting Bids (attached). Bid due date extended to **June 25, 2019** at 2:00 p.m.

CHANGES TO THE PROJECT MANUAL:

Item No 1.1

Reference: Notice Inviting Bids

Description: **REPLACE** the previous Notice Inviting Bids with the *revised* Notice Inviting Bids (attached). Bid due date extended to **June 25, 2019** at 2:00 p.m.

CHANGES TO THE DRAWINGS:

Item No 2.1

Reference: Sheet L1.3.

Description: **REPLACE** previous plan sheet L1.3 dated 5/24/19 with the attached sheet L1.3 dated 6/11/19.

Item No 2.2

Reference: Sheets L2.1A & L2.2.

Description: **INSERT** these *new* plan sheets dated 6/11/19 after sheet L2.1 "Planting Plan".

Item No 2.3

Reference: Sheet L4.1.

Description: **REPLACE** previous plan sheet L4.1 dated 5/24/19 with the attached sheet L4.1 dated 6/11/19.

Item No 2.4

Reference: Sheet 2C-3.1.

Description: **INSERT** this *new* plan sheet dated 10/29/08 after sheet L4.3 "Construction Details". This sheet is "For Reference" only.

END OF ADDENDUM #1

NOTICE INVITING BIDS

Bid # 004-2019-03

OAK KNOLL ELEMENTARY SCHOOL and LAUREL ELEMENTARY SCHOOL ELC PLAYGROUNDS

Notice is hereby given that the Governing Board of the **Menlo Park City School District** will receive up to, **but not later than, June 25, 2019, 2:00 p.m. local time**, and will then publicly open and read aloud at the Menlo Park City School District, located at **181 Encinal Avenue, Atherton, CA 94027** for the following project:

OAK KNOLL ELEMENTARY SCHOOL:

Demolition and site preparation. Installation of new artificial turf or sod (see alternate #1), irrigation, plantings, shade structures (see alternate #2), concrete paving, playground apparatus, decorative fencing.

LAUREL ELEMENTARY SCHOOL:

Demolition and site preparation. Installation of new artificial turf, shade structure, playground apparatus, and fencing.

Project duration is **151 calendar days** with a start date of **July 8, 2019** and a completion date of **December 6, 2019**. All contract work that is not related to play apparatus must be complete by **August 16, 2019**. After August 16, 2019, areas that receive play apparatus must be fully enclosed with 6-ft tall temporary fencing until the new equipment is installed, inspected, and accepted.

Contractor shall possess at the time of its bid, the following classification(s) of Contractor's California State license: **A – General Engineering Contractor**

Such bids shall be received at the Menlo Park City School District office located **181 Encinal Avenue, Atherton, CA 94027**.

Complete Notice to Bidders, Plans and specifications will be available on the District website: **<https://district.mpcsd.org/Page/1075>**

A **non-mandatory** bidders' conference will be held on **June 5, 2019, at 2:00 p.m.** (or by appointment) at **Oak Knoll Elementary School, 1895 Oak Knoll Lane, Menlo Park, CA, 94027**, for the purpose of acquainting all prospective contractors with the bid documents and the work site.

Each bid must conform and be fully responsive to all documents comprising the Contract Documents.

Each bid shall be made on the Bid Form prepared by the District in the Contract Documents.

Contractor and its subcontractors shall pay all workers on the Project not less than the general prevailing rate of per diem wages and the general prevailing rate for holiday and overtime work as determined by the Director of the Department of Industrial Relations, State of California, for the type of work performed and the locality in which the work is to be performed within the boundaries of the District, pursuant to sections 1770 et seq. of the California Labor Code. Prevailing wage rates are available from the District or on the Internet at: <<http://www.dir.ca.gov>>. Contractor and its subcontractors shall comply with the registration and qualification requirements pursuant to sections 1725.5 and 1771.1 of the California Labor Code.

The substitution of appropriate securities in lieu of retention amounts from progress payments in accordance with Public Contract Code Section 22300 is permitted.

A bid bond by an admitted surety insurer on the form provided by the District, cash, or a cashier's check or a certified check, drawn to the order of the District, in the amount of ten percent (10%) of the total bid price, shall accompany the Bid Form, as a guarantee that the Contractor will, within seven (7) calendar days after the Notice to Proceed or other direction, enter into a contract with the District for the performance of the Services as stipulated in the bid. In addition, a one hundred percent (100%) Performance Bond and a one hundred percent (100%) Payment Bond will be required of the successful bidder.

Each bid must include the name and location of the place of business of each subcontractor who shall perform/work of this Contract in excess of one-half of one percent (1/2 of 1%) of the bid price.

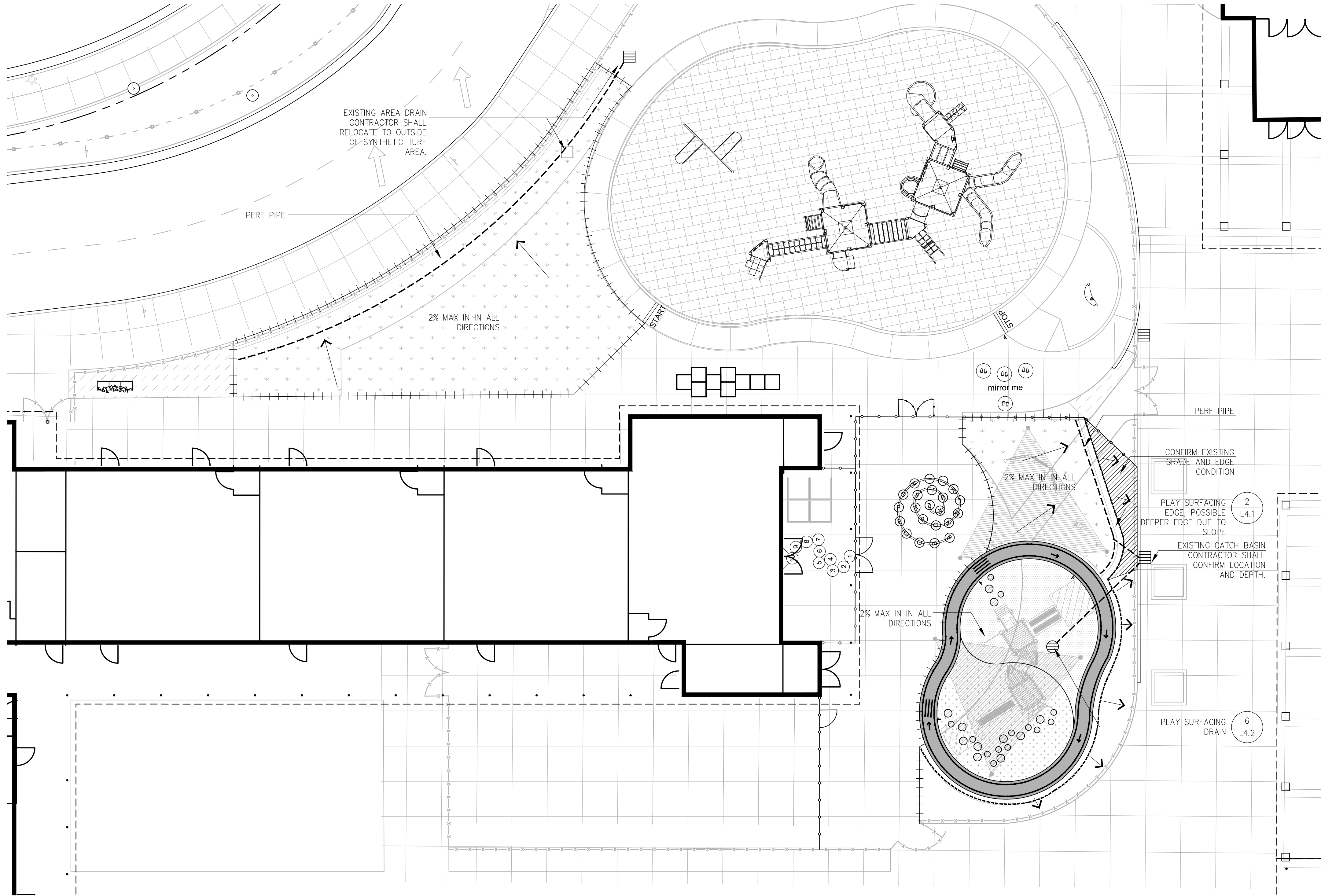
No bid may be withdrawn for a period of sixty (60) days after the date set for the opening for bids except as provided pursuant to Public Contract Code Sections 5100 *et seq.*

The District reserves the right to reject any and all bids and to waive any informalities or irregularities in the bidding.

By: _____
Chief Business Officer

Menlo Park City School District

DATED: May 29, 2019

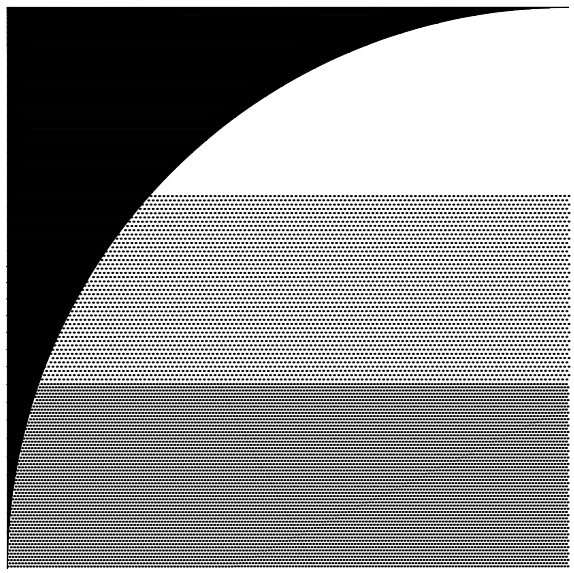


LEGEND

++++ CONFORM TO EXISTING EDGE

GRADING AND DRAINAGE NOTES:

1. GRADING AND DRAINAGE DESIGN SHOWN IN CONCEPTUAL. CONTRACTOR SHALL VERIFY AND CONFIRM CONCEPT IS FEASIBLE. IF ISSUES ARE FOUND, CONTRACTOR SHALL WORK WITH DISTRICT AND LANDSCAPE ARCHITECT ON FEASIBLE SOLUTION.
2. PROVIDE POSITIVE SURFACE DRAINAGE AWAY FROM ALL STRUCTURES BY SLOPING ALL HARDSCAPE SURFACES 2% MAX AND LANDSCAPE SURFACES AT 5% AWAY FROM STRUCTURES UNLESS OTHERWISE NOTED ON THE PLANS.
3. CONTRACTOR SHALL NOT CONSTRUCT ANY IMPROVEMENTS THAT WILL CAUSE WATER TO PONT OR NOT MEET REQUIREMENTS IN GRADING NOTE #2 OR THE ADA REQUIREMENT BELOW. DO NOT ADJUST GRADES ON THIS PLAN WITHOUT PRIOR WRITTEN APPROVAL FROM THE DISTRICT AND LANDSCAPE ARCHITECT.
4. AREAS LACKING TOPOGRAPHIC INFORMATION (ELEVATIONS) HAVE BEEN INTERPOLATED USING STANDARD ENGINEERING METHODS. CONTRACTOR SHALL FIELD VERIFY ALL ELEVATIONS AT CONFORMS PRIOR TO COMMENCEMENT OF CONSTRUCTION AND REPORT BACK AND DISCREPANCIES TO THE DISTRICT AND LANDSCAPE ARCHITECT.
5. ADJUST ANY MANHOLE OR UTILITY STRUCTURES TO PROPOSED GRADE PRIOR TO POURING CONCRETE.
6. ALL AREA DRAINS AND CATCH BASIN GRATES WITHIN PEDESTRIAN ACCESSIBLE AREAS SHALL MEET ADA REQUIREMENTS.
7. ALL TRENCHES SHALL BE BACKFILLED PER INDUSTRY STANDARDS.
8. FOR GRAVITY FLOW SYSTEMS, CONTRACTOR SHALL VERIFY SIZE, MATERIAL, LOCATION AND DEPTH OF ALL SYSTEMS THAT ARE TO BE CONNECTED TO OR CROSSED PRIOR TO THE TRENCHING OR INSTALLATION OF ANY GRAVITY FLOW SYSTEM.
9. CONTRACTOR TO FIELD VERIFY EX IRRIGATION LINES AND EX. ELECTRIC CONDUITS BEFORE CONSTRUCTION.



GATES
+ASSOCIATES

LANDSCAPE ARCHITECTURE
LAND PLANNING · URBAN DESIGN

2671 CROW CANYON RD. SAN RAMON, CA 94583
T 925.736.8176 www.dgates.com

OAK KNOLL
ELEMENTARY
SCHOOL

MENLO PARK
CALIFORNIA

| ISSUE: | DESCRIPTION: | DATE: |
|------------|--------------|------------|
| BID SET | | 05/24/2019 |
| ADDENDUM 1 | | 06/11/2019 |

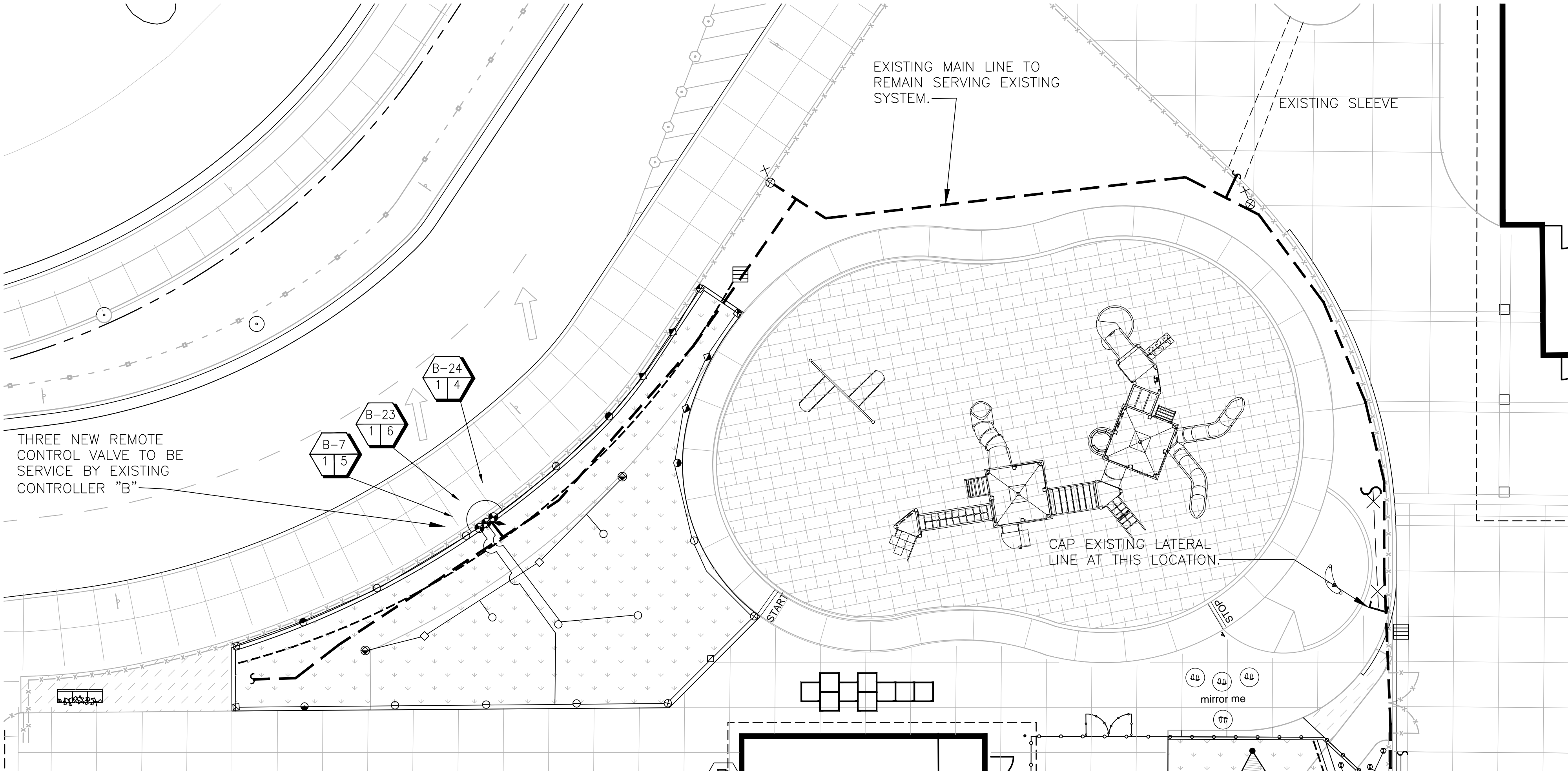


| | |
|-----------------|------------|
| PROJECT NUMBER: | 5610 |
| DRAWN: | JK |
| CHECK: | MM |
| DATE: | 06/11/2019 |
| SCALE: | |



CONCEPTUAL GRADING
PLAN

L1.3



ALTERNATES

- 1 ALTERNATE 1. DEDUCT ARTIFICIAL TURF (LOCATION B) AND REPLACE WITH SOD

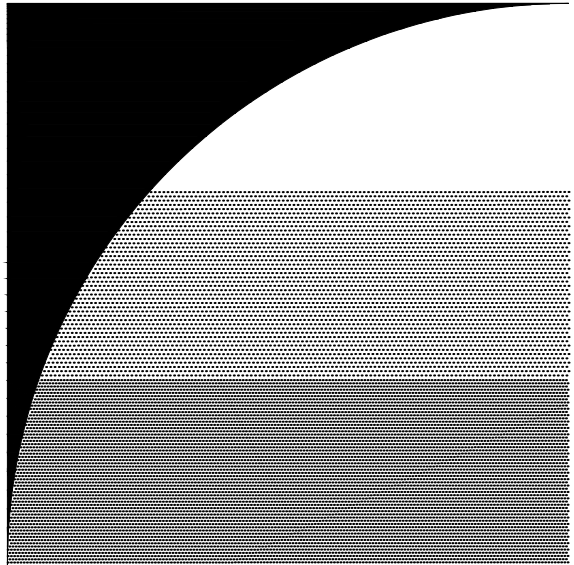
IRRIGATION LEGEND

| SYMBOL | MODEL NUMBER | DESCRIPTION | NOZZLE GPM | OPERATING PSI | OPERATING RADIUS (FEET) |
|--------|------------------------------------|--|-------------|---------------|-------------------------|
| | 570Z-6P-PRX-COM/O-T-15FP,15HP,15QP | TORO POP-UP SPRAY SPRINKLER (TURF) | 2,3,1,2,0.6 | 30 | 12-15 |
| | 570Z-6P-PRX-COM/O-T-12HP | TORO POP-UP SPRAY SPRINKLER (TURF) | 0.75 | 30 | 10-12 |
| | 570Z-6P-PRX-COM/O-T-10FP,10HP,10QP | TORO POP-UP SPRAY SPRINKLER (TURF) | 1,0,5,0.23 | 30 | 8-10 |
| | 570Z-6P-PRX-COM/O-T-8FP,8HP,8QP | TORO POP-UP SPRAY SPRINKLER (TURF) | .66,.33,.17 | 30 | 6-8 |
| | DB-04-PC | TORO BUBBLER (SHRUB) 1 PER SHRUB | 0.066 | 30 | TRICKLE |
| | P-220-26 SERIES | TORO REMOTE CONTROL VALVE | | | |
| | 33 DNP | RAIN BIRD QUICK COUPLING VALVE | | | |
| | - | EXISTING REMOTE CONTROL VALVE TO REMAIN | | | |
| | - | EXISTING QUICK COUPLER | | | |
| | - | EXISTING TREE BUBBLER AND SPRINKLER | | | |
| | - | EXISTING GATE VALVE | | | |
| | - | EXISTING CONTROLLER | | | |
| | | CONTROLLER AND STATION NUMBER FLOW (GPM) REMOTE CONTROL VALVE SIZE (IN INCHES) | | | |
| | | EXISTING MAIN LINE | | | |
| | | EXISTING LATERAL LINE | | | |
| | | LATERAL LINE: 3/4" AND LARGER: 1120-SCHEDULE 40 PVC PLASTIC PIPE WITH SCHEDULE 40 PVC SOLVENT WELD FITTINGS. 12" COVER. | | | |

NOTES:

- ONE BUBBLER SYMBOL IS SHOWN AT TREES FOR GRAPHIC CLARITY ONLY. INSTALL MINIMUM TWO BUBBLERS AT EACH TREE. INSTALL REQUIRED NUMBER OF BUBBLERS AS DETAILED.
- IRRIGATION EQUIPMENT MAY BE SHOWN WITHIN HARDSCAPE FOR GRAPHIC CLARITY ONLY. INSTALL ALL IRRIGATION EQUIPMENT WITHIN PLANTED AREAS. IRRIGATION PIPE AND WIRE CROSSING BENEATH HARDSCAPE SURFACES SHALL BE CONTAINED WITHIN SLEEVING OR SCHEDULE 40 PVC CONDUIT. SLEEVING SIZE SHALL BE A MINIMUM OF TWO TIMES THE AGGREGATE DIAMETER OF ALL PIPES CONTAINED WITH SLEEVE. PROVIDE VERTICAL SWEEP FOR ALL ELECTRICAL CONDUIT ON EACH SIDE OF HARDSCAPE AND TERMINATE ENDS AT 12" MINIMUM DEPTH AND 12" FROM HARDSCAPE SURFACE.
- UNSIZED LATERAL LINE PIPING LOCATED DOWN STREAM OF 1" PIPING SHALL BE 3/4" IN SIZE (TYPICAL).
- SIZING OF LATERAL PIPE SHALL BE AS FOLLOWS:

| | |
|-------|-----------|
| 0.75" | 0-6 GPM |
| 1" | 7-12 GPM |
| 1.25" | 21-32 GPM |



GATES
+ASSOCIATES
LANDSCAPE ARCHITECTURE
LAND PLANNING • URBAN DESIGN
2671 CROW CANYON RD. SAN RAMON, CA 94583
T 925.736.8176 www.dgates.com

OAK KNOLL
ELEMENTARY
SCHOOL

MENLO PARK
CALIFORNIA

| ISSUE: | DESCRIPTION: | DATE: |
|--------|-----------------------|--------------------------|
| | BID SET ADDENDUM 1 | 05/24/2019 06/11/2019 |



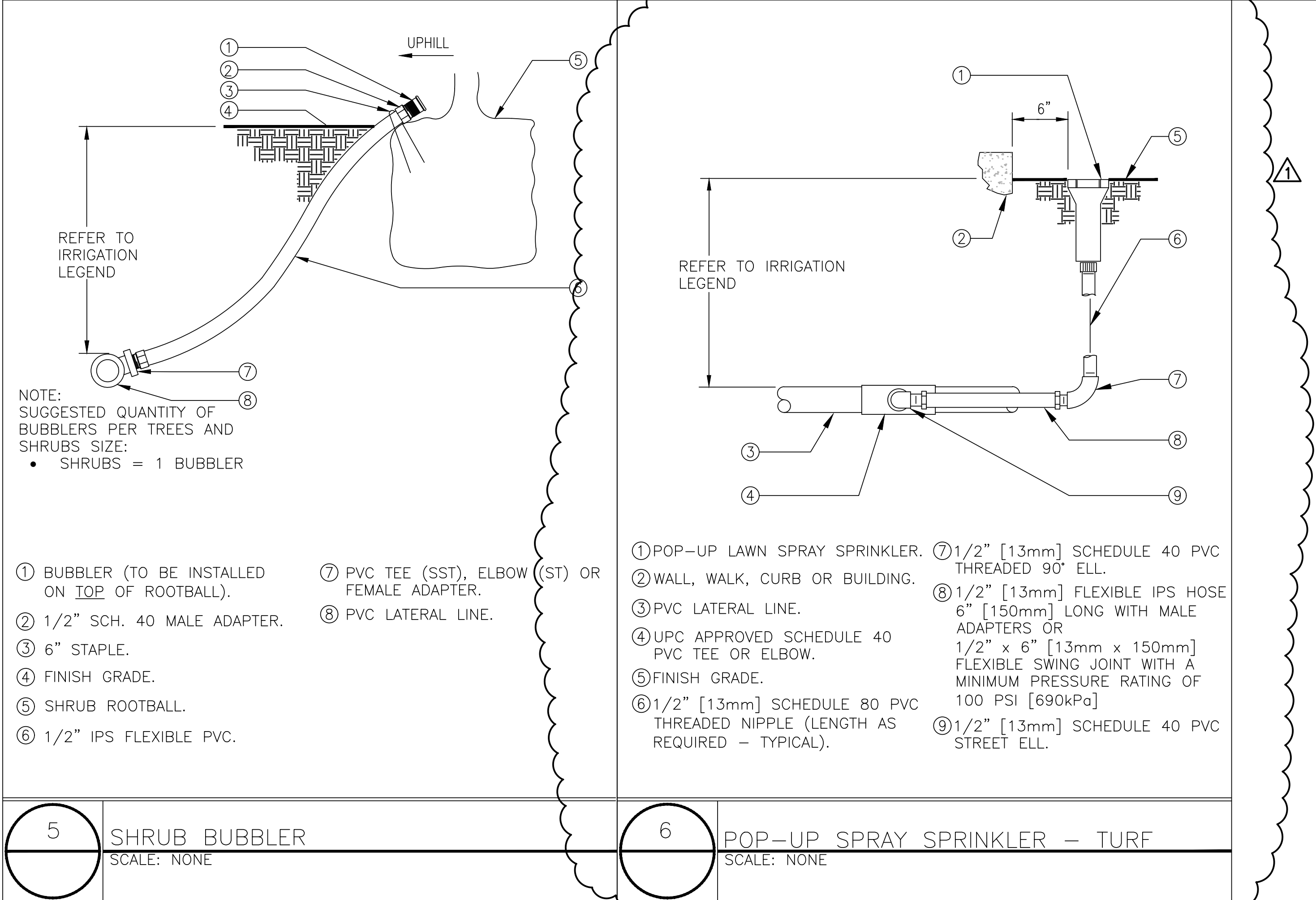
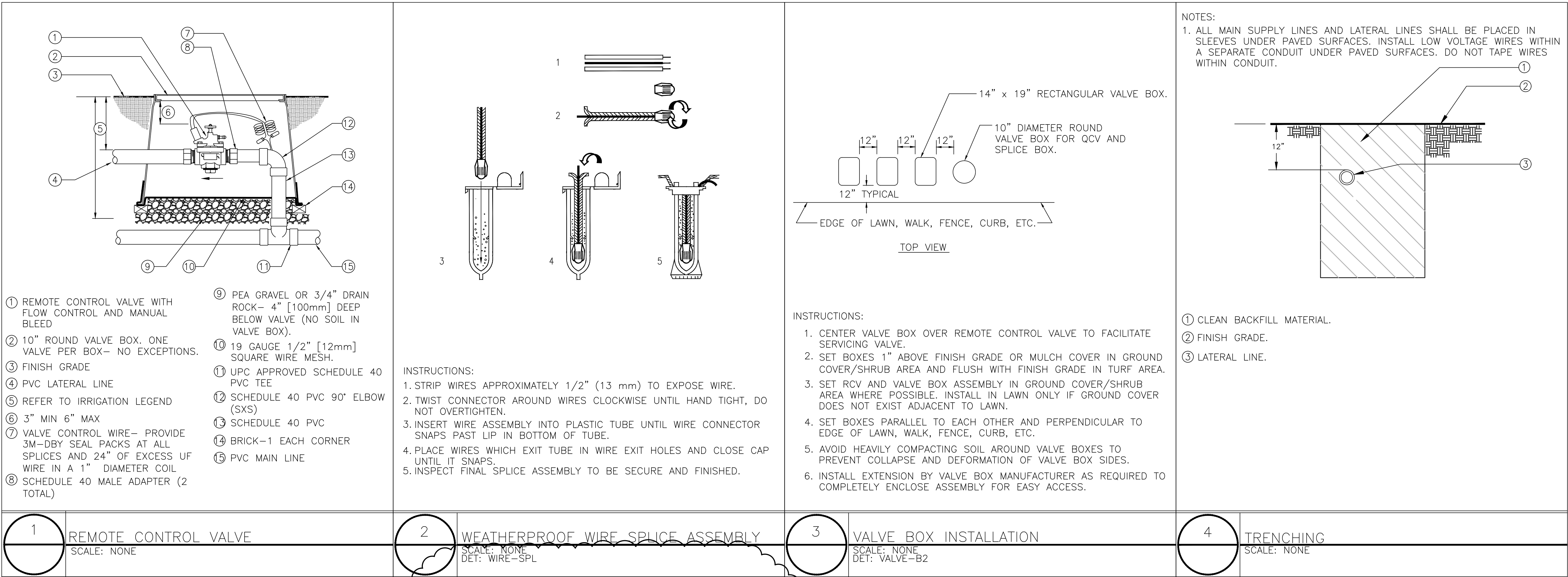
| | |
|-----------------|------------|
| PROJECT NUMBER: | 5610 |
| DRAWN: | JK |
| CHECK: | MM |
| DATE: | 06/11/2019 |
| SCALE: | |



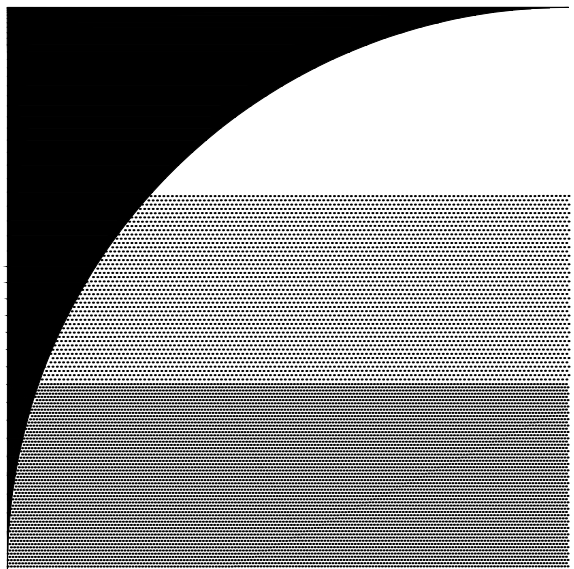
IRRIGATION PLAN WITH
TURF
AND LEGEND

L2.1A

Irrigation Consultant:
Russell D. Mitchell Associates, Inc.
2760 Camino Diablo
Walnut Creek, CA 94597
tel 925.939.3985 ♦ fax 925.932.5671
www.rmairrigation.com



Irrigation Consultant:
Russell D. Mitchell Associates, Inc.
2760 Camino Diablo
Walnut Creek, CA 94597
tel 925.939.3985 ♦ fax 925.932.5671
www.rmairrigation.com



GATES
+ASSOCIATES
LANDSCAPE ARCHITECTURE
LAND PLANNING · URBAN DESIGN
2671 CROW CANYON RD. SAN RAMON, CA 94583
T 925.736.8176 www.dgates.com

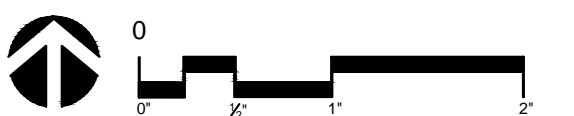
OAK KNOLL
ELEMENTARY
SCHOOL

MENLO PARK
CALIFORNIA

ISSUE: DESCRIPTION: DATE:
BID SET 05/24/2019
ADDENDUM 1 06/11/2019



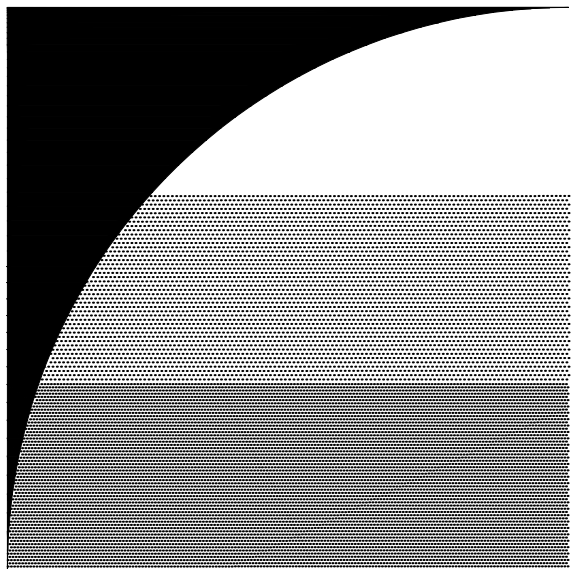
PROJECT NUMBER: 5610
DRAWN: JK
CHECK: MM
DATE: 06/11/2019
SCALE:



IRRIGATION DETAILS
AND WATER
CALCULATIONS

L2.2

PATH: P:\MENLO PARK\MENLO PARK CITY SCHOOL DISTRICT EARLY LEARNING CENTERS\ROAD\OAK KNOLL ELEMENTARY SHEETS\DC-D-OAK KNOLL ELEMENTARY.DWG
PLOT DATE: 6/12/2019 9:42 AM

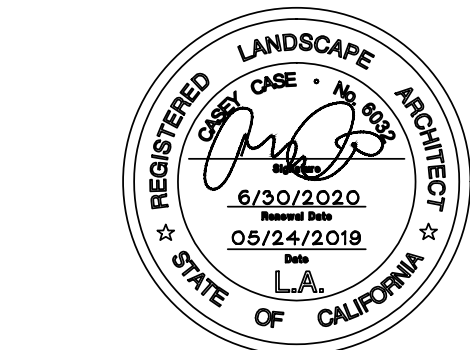


GATES
+ASSOCIATES
LANDSCAPE ARCHITECTURE
LAND PLANNING · URBAN DESIGN
2671 CROW CANYON RD. SAN RAMON, CA 94583
T 925.736.8176 www.dgates.com

OAK KNOLL ELEMENTARY SCHOOL

MENLO PARK
CALIFORNIA

| ISSUE: | DESCRIPTION: | DATE: |
|------------|--------------|------------|
| BID SET | | 05/24/2019 |
| ADDENDUM 1 | | 06/11/2019 |



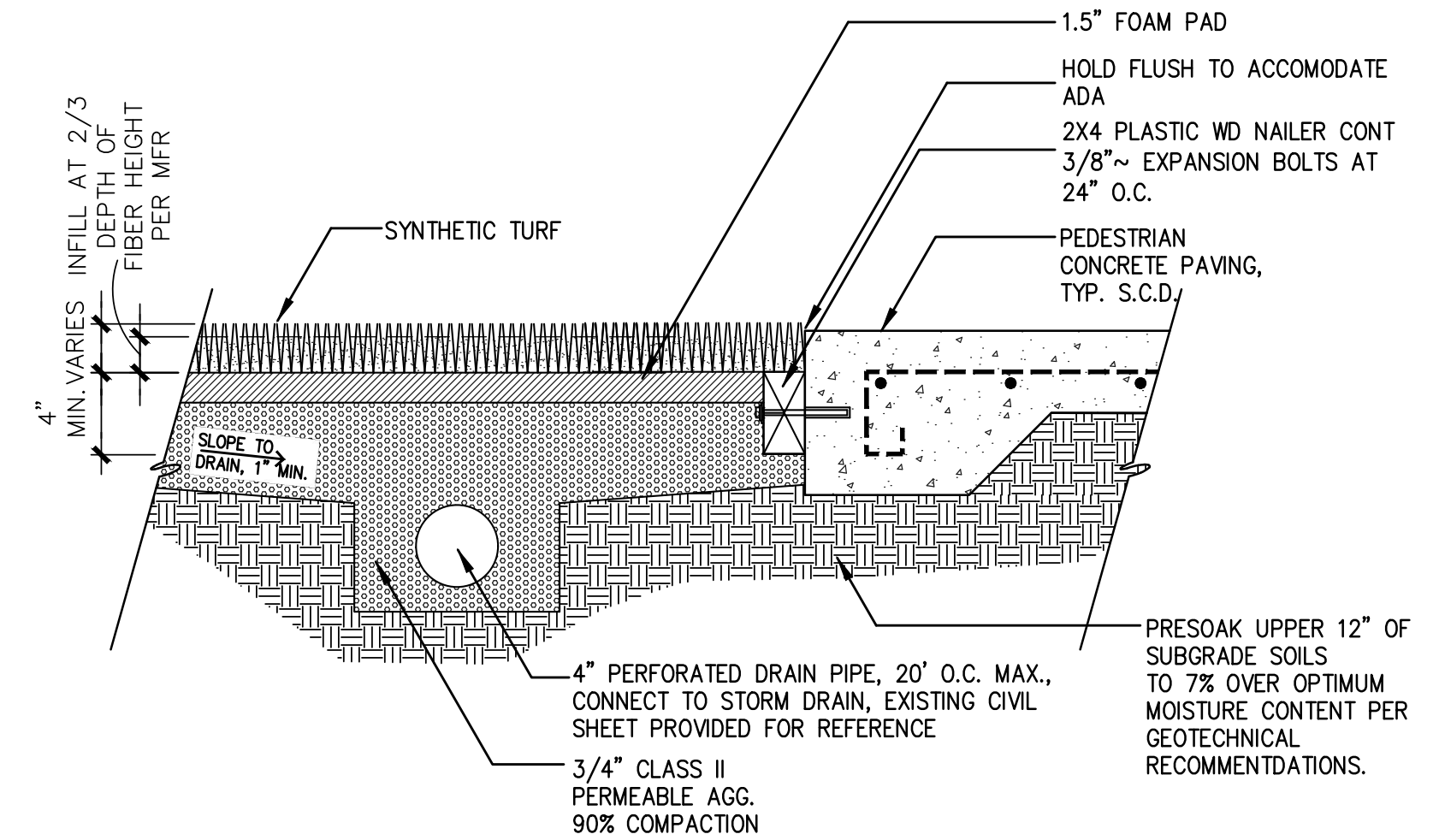
PROJECT NUMBER: 5610
DRAWN: JK
CHECK: MM
DATE: 06/11/2019
SCALE: PER DETAIL



CONSTRUCTION DETAIL

L4.1

- NOTES:
1. FINISH GRADES OF SYNTHETIC TURF SHALL BE THE TOP OF INFILL MATERIAL. INFILL MATERIAL SHALL BE A MINIMUM OF 1/4" BELOW AND 1/2" MAXIMUM ADJACENT SURFACES.
2. SYNTHETIC TURF AND IN FILL:
MFR: SYNLAWN OR APPROVED EQUAL
MODEL: SYNLAWN PLAY PREMIUM 3. INSTALL PER MFR SPECS AND DETAILS



4 SYNTHETIC TURF

SCALE: 1-1/2" = 1'-0"

PERVIOUS POURED IN PLACE RUBBER SAFETY SURFACING. WEAR COURSE, INSTALL PER MANUFACTURER SPECIFICATIONS, SEE LAYOUT LEGEND MANUFACTURER AND COLOR.

POUR IN PLACE SAFETY SURFACING BASE LAYER. INSTALL PER MANUFACTURER SPECIFICATIONS, SEE LAYOUT LEGEND MANUFACTURER.

CLASS II ROCK BASE, 95% RELATIVE COMPACTION, S.C.D.

CONCRETE WITH THICKENED 8" DEEP EDGE AT RUBBER SURFACE

REBAR

PEDESTRIAN CONCRETE PAVING

#3 REBAR B.W. CENTERED IN POUR

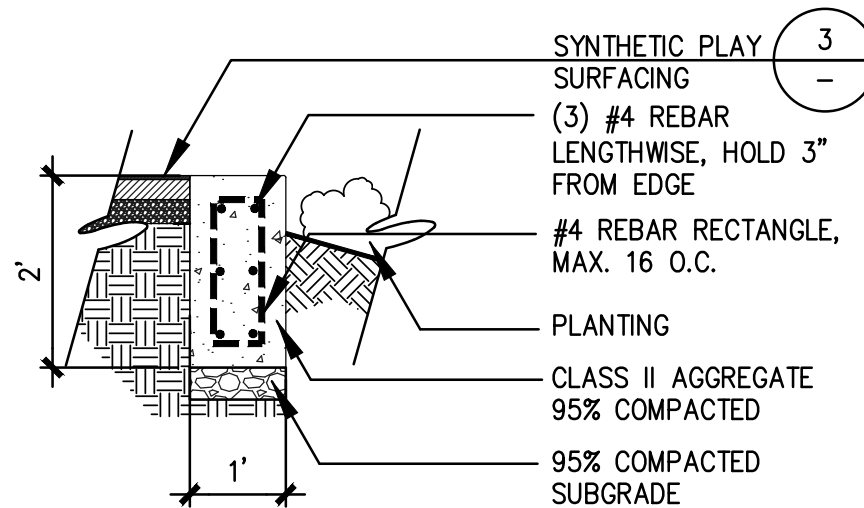
NON-EXPANSIVE FILL PER GEOTECHNICAL REPORT, TYP.

NOTES:

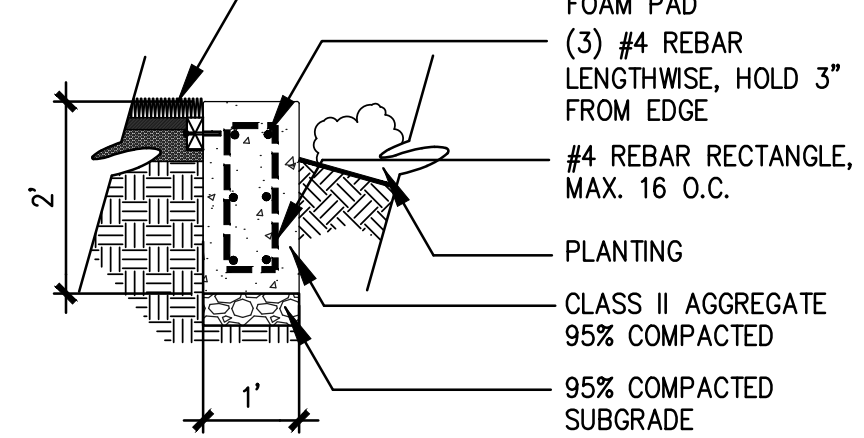
- A. ALIPHATIC BINDER TO BE USED
B. COLOR: SEE LAYOUT LEGEND

3 SAFETY SURFACING AT PEDESTRIAN CONCRETE PAVING

SCALE: 1-1/2" = 1'-0"



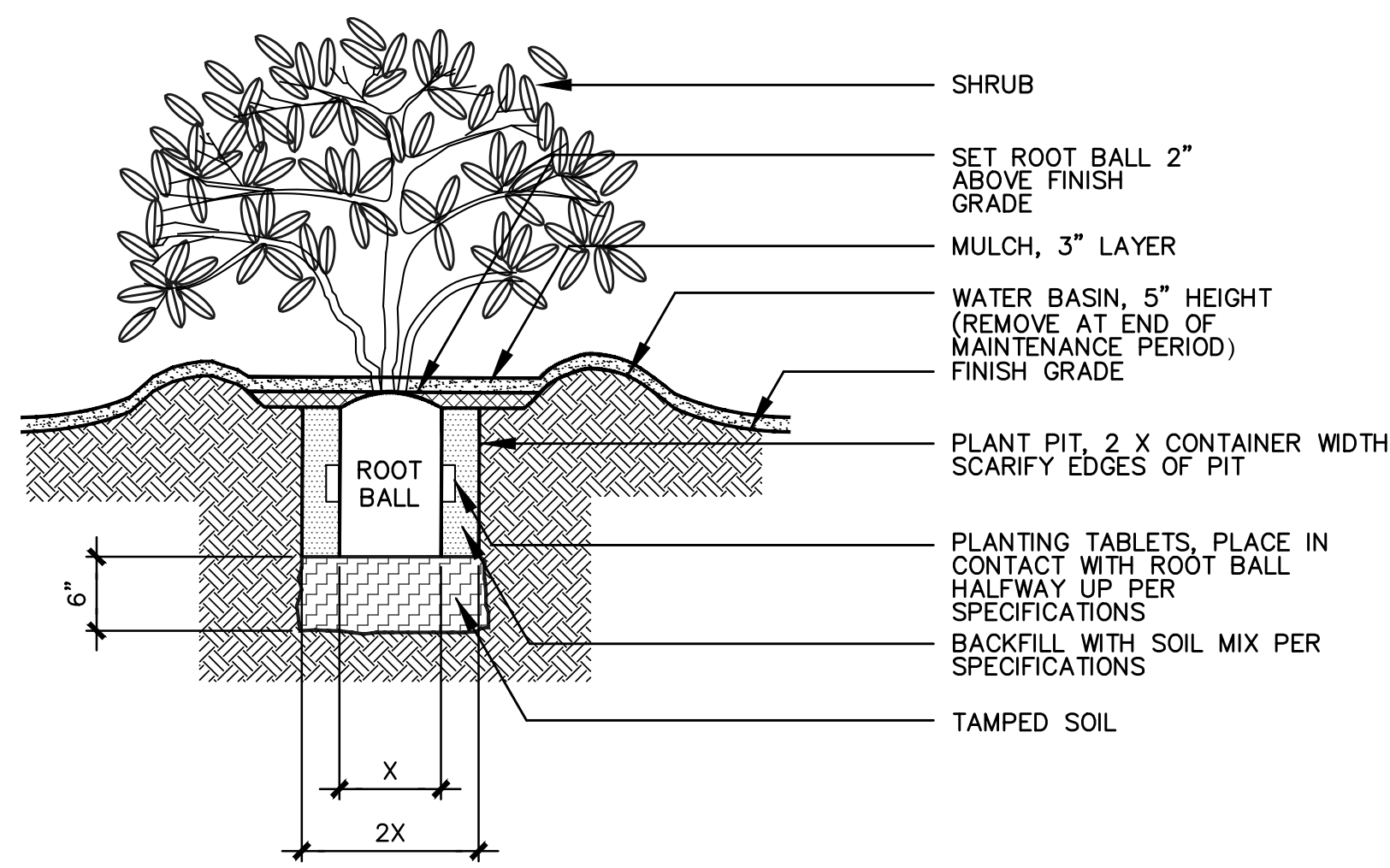
SECTION AT SYNTHETIC TURF



SECTION AT SYNTHETIC TURF

2 PLAY SURFACE EDGE @ PLANTING

SCALE: 1/2" = 1'-0"



1 SHRUB PLANTING

SCALE: 1" = 1'

NOTES:

- A. CONTRACTOR TO PROVIDE CPSI INSPECTION UPON COMPLETION.
B. CONTRACTOR SHALL PERFORM A COMPACTION TEST OF AGGREGATE BASE TO CONFIRM CONDITIONS MEET MFR'S SPECIFICATIONS PRIOR TO INSTALLATION OF POURED IN PLACE.
C. SURFACING SHALL MEET ALL REQUIREMENTS OF ASTM 1951F AND ASTM F1292

POUR IN PLACE RUBBER SAFETY SURFACING

PERMEABLE BASE ROCK. CALTRANS CLASS II CRUSHED ANGULAR STONE. SUBMIT SAMPLE FOR APPROVAL. INSTALL IN 2" LIFTS. COMPACTION PER SPECIFICATIONS, S.C.D.

95% COMPACTED SUBGRADE
3/4" AGGREGATE BASE ROCK 90% RELATIVE COMPACTION

12" MIN.
FILTER FABRIC. MIRAFI #140N OR APPROVED EQUAL. WRAP AROUND GRATE

CONCRETE DRAIN. CONTRACTOR TO SUBMIT CUT SHEET TO LANDSCAPE ARCHITECT FOR APPROVAL. INSTALL PER MFR'S SPECS.

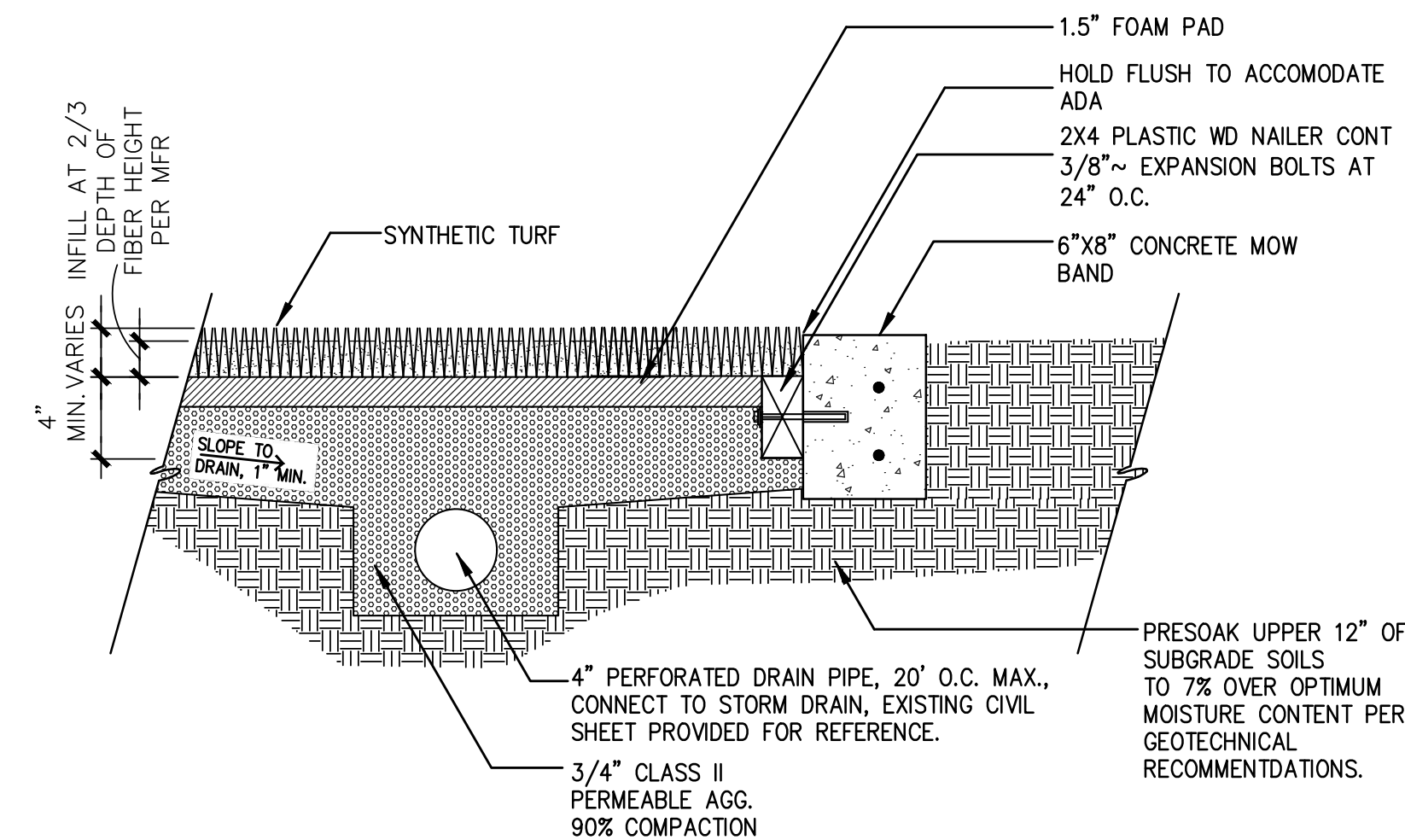
DRAIN & DRAIN LINE

6 PERVIOUS SURFACING DRAINAGE INLET

SCALE: 1" = 1'-0"

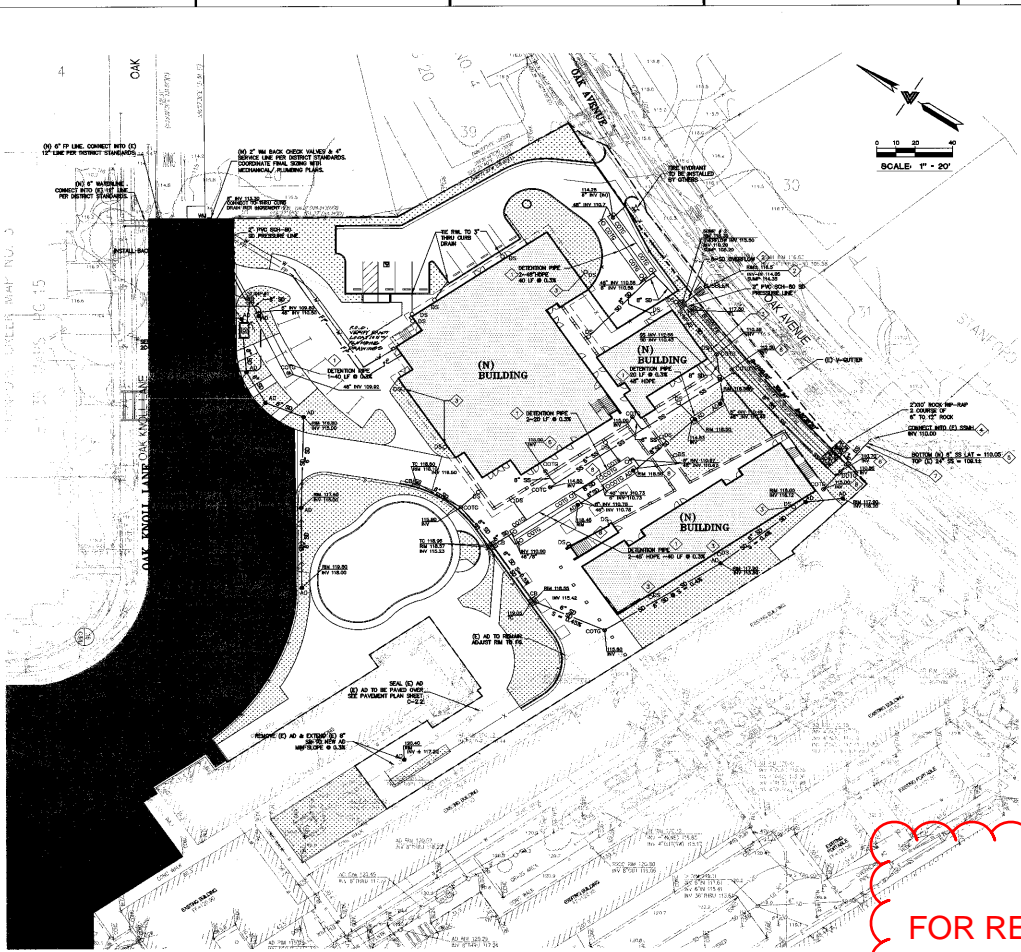
NOTES:

1. FINISH GRADES OF SYNTHETIC TURF SHALL BE THE TOP OF INFILL MATERIAL. INFILL MATERIAL SHALL BE A MINIMUM OF 1/4" BELOW AND 1/2" MAXIMUM ADJACENT SURFACES.
2. SYNTHETIC TURF AND IN FILL:
MFR: SYNLAWN OR APPROVED EQUAL
MODEL: SYNLAWN PLAY PREMIUM 3. INSTALL PER MFR SPECS AND DETAILS



5 SYNTHETIC TURF AT MOW BAND

SCALE: 1-1/2" = 1'-0"



UTILITY ANNOTATION KEYS:

- 40" NON-PERFORATED HOSE LATERATION PIPE (COMMON SLOPE OR EQUAL) SEE DETAIL.
- OFF-SITE MANHOLE AND DRAIN SYSTEM PER CITY OF MENLO PARK STANDARD DETAIL.

- DIRECT ROOF DOWNSPOUTS (DS) LEADING TO OR OFF-SITE PAVED DRIVE (SEE DETAIL) SHALL BE INSTALLED PER CITY OF MENLO PARK STANDARD DETAIL.

- DRAIN CONNECTION WITHIN (DS) SHALL PER WEST BAY SANITARY DISTRICT DETAIL, SEE DETAIL.

- SEWER PER WEST BAY SANITARY DISTRICT DETAIL, SEE DETAIL.

- CONNECT BY STORM DRAIN (SD) DETAIL, SEE DETAIL.

UTILITY NOTES:

CONTRACTOR SHALL OBTAIN THE PROPER PERMITS PRIOR TO ANY UTILITY WORK.

A SEPARATE PERMIT IS REQUIRED FOR ANY & ALL WORK WITHIN THE CITY RIGHT-OF-WAY. THE CONTRACTOR SHALL OBTAIN AN APPROVED STREET WORK ENCLOSUREMENT PERMIT FROM THE PUBLIC WORKS DEPARTMENT PRIOR TO THE COMMENCEMENT OF THE WORK WITHIN THE CITY RIGHT-OF-WAY.

CONTRACTOR SHALL MAINTAIN APPROVED EROSION AND SEDIMENTATION CONTROL MEASURES THROUGHOUT CONSTRUCTION AND MAINTAIN EROSION CONTROL PLANS.

CONTRACTOR SHALL MAINTAIN APPROVED EROSION AND SEDIMENTATION CONTROL MEASURES THROUGHOUT CONSTRUCTION AND MAINTAIN EROSION CONTROL PLANS.

CONTRACTOR SHALL MAINTAIN APPROVED EROSION AND SEDIMENTATION CONTROL MEASURES THROUGHOUT CONSTRUCTION AND MAINTAIN EROSION CONTROL PLANS.

CONTRACTOR SHALL MAINTAIN APPROVED EROSION AND SEDIMENTATION CONTROL MEASURES THROUGHOUT CONSTRUCTION AND MAINTAIN EROSION CONTROL PLANS.

CONTRACTOR SHALL MAINTAIN APPROVED EROSION AND SEDIMENTATION CONTROL MEASURES THROUGHOUT CONSTRUCTION AND MAINTAIN EROSION CONTROL PLANS.

CONTRACTOR SHALL MAINTAIN APPROVED EROSION AND SEDIMENTATION CONTROL MEASURES THROUGHOUT CONSTRUCTION AND MAINTAIN EROSION CONTROL PLANS.

CONTRACTOR SHALL MAINTAIN APPROVED EROSION AND SEDIMENTATION CONTROL MEASURES THROUGHOUT CONSTRUCTION AND MAINTAIN EROSION CONTROL PLANS.

CONTRACTOR SHALL MAINTAIN APPROVED EROSION AND SEDIMENTATION CONTROL MEASURES THROUGHOUT CONSTRUCTION AND MAINTAIN EROSION CONTROL PLANS.

CONTRACTOR SHALL MAINTAIN APPROVED EROSION AND SEDIMENTATION CONTROL MEASURES THROUGHOUT CONSTRUCTION AND MAINTAIN EROSION CONTROL PLANS.

CONTRACTOR SHALL MAINTAIN APPROVED EROSION AND SEDIMENTATION CONTROL MEASURES THROUGHOUT CONSTRUCTION AND MAINTAIN EROSION CONTROL PLANS.

CONTRACTOR SHALL MAINTAIN APPROVED EROSION AND SEDIMENTATION CONTROL MEASURES THROUGHOUT CONSTRUCTION AND MAINTAIN EROSION CONTROL PLANS.

CONTRACTOR SHALL MAINTAIN APPROVED EROSION AND SEDIMENTATION CONTROL MEASURES THROUGHOUT CONSTRUCTION AND MAINTAIN EROSION CONTROL PLANS.

CONTRACTOR SHALL MAINTAIN APPROVED EROSION AND SEDIMENTATION CONTROL MEASURES THROUGHOUT CONSTRUCTION AND MAINTAIN EROSION CONTROL PLANS.

CONTRACTOR SHALL MAINTAIN APPROVED EROSION AND SEDIMENTATION CONTROL MEASURES THROUGHOUT CONSTRUCTION AND MAINTAIN EROSION CONTROL PLANS.

CONTRACTOR SHALL MAINTAIN APPROVED EROSION AND SEDIMENTATION CONTROL MEASURES THROUGHOUT CONSTRUCTION AND MAINTAIN EROSION CONTROL PLANS.

LEA & BRUCE ENGINEERING, INC.
CIVIL ENGINEERING
1000 CALIFORNIA STREET
SAN FRANCISCO, CA 94108
(415) 774-1000

DLM
DERRICK L. MANNING
REGISTERED CIVIL ENGINEER
NO. 105572
CALIFORNIA
10-5-08

INCREMNT NO. 2
415 GRADE CLASSROOM AND MULTI-PURPOSE FACILITY
Oak Knoll Elementary School
Menlo Park City School District / Atherton, Ca.

UTILITY PLAN

LS 8 201008
2007 1700
10-29-08
Sheet Number

PROJECT NUMBER: 000011
DRAWN BY: JLM
CHECKED BY: JLM
DATE: 10-13-08

20-3.1

FOR REFERENCE