

Hillview Middle School



Oak Knoll School

Encinal School



Laurel School

Menlo Park City School District O'Connor School Site Community Input Meeting

November 6, 2013

Meeting Agenda

- ▶ Election Results: Measure W Passes with 75.1% support!
- ▶ Project Background Information
- ▶ Planning, Design and Construction Schedule
- ▶ Community Input Process and Opportunity
- ▶ Environmental Review Process
- ▶ Review of Initial School Design Options
- ▶ Review of Initial Traffic Design Options
- ▶ Input and Q & A

Project Background Information

- ▶ Review of 2012/13 Planning Work
 - ▶ Current and Projected Student Enrollment
 - ▶ Need for 4th elementary school to handle increased enrollment
 - ▶ Current elementary schools are over crowded
 - ▶ Additional capacity to handle future growth
 - ▶ O'Connor School Site
 - ▶ New School for Grades 3rd to 5th
 - ▶ Laurel School: K-2 School
 - ▶ Enrollment capacity 360 Students
 - ▶ Designed in a manner to allow for future use as K-5
 - ▶ Open August 2016

Project Background Information

- ▶ **Existing O'Connor School Site Facts**
 - ▶ Single permanent facility of 10 classrooms and small offices
 - ▶ Built in 1950's with no major modernization work
 - ▶ Portables are owned by GAIS and can not be used by the School District (not permitted/built under State requirements)
 - ▶ Small school site with unusual footprint and challenging access points
 - ▶ More cost effective to build a new school vs. modernize and expand school to meet District educational needs

Planning/Design/Construction Schedule

Activity	Date
Planning Process	
Community Input	Present – 2/11/2014
Schematic Plan Development	Ongoing – 2/1/2014
Schematic Plan Approval	2/11/2014 (Board Meeting)
Environmental Review * - Initial Study with Negative Dec or EIR - Phase I/DTSC	Ongoing – 5/1/2014
Design Work	
Detailed Design Development	Feb 2014 – August 2014
Submit Plans to State (DSA)	August 2014
DSA Approval	March 2015
* Environmental Review has its own input process and may take longer depending on scope	

Planning/Design/Construction Schedule

Activity	Date
Construction	
Bidding Process	August 2014 – April 2015
GAIS Vacates Site	May 15, 2015
Construction	May 16, 2015 – June 2016
District Move-in	July 2016
Opening of School	August 2016



Community Input Process and Opportunity

“Civility means a great deal more than just being nice to one another. It is complex and encompasses learning how to connect successfully and live well with others, developing thoughtfulness, and fostering effective self-expression and communication. *Civility includes courtesy, politeness, mutual respect, fairness, good manners, as well as a matter of good health.*”

– Pier Massimo Forni



Community Input Process and Opportunity

- ▶ **Scheduled Community and School Board Meetings**

- ▶ **Tuesday, November 12, 2013**

- Community Meeting 8:30 - 10:30 a.m. at Laurel School

- ▶ **Tuesday, December 10, 2013**

- Regular Board Meeting 6PM at District Office

- ▶ **Tuesday, January 7, 2014**

- Special Board Meeting 7PM at Laurel School

- ▶ **Tuesday, February 11, 2014**

- Regular Board Meeting 6PM at District Office

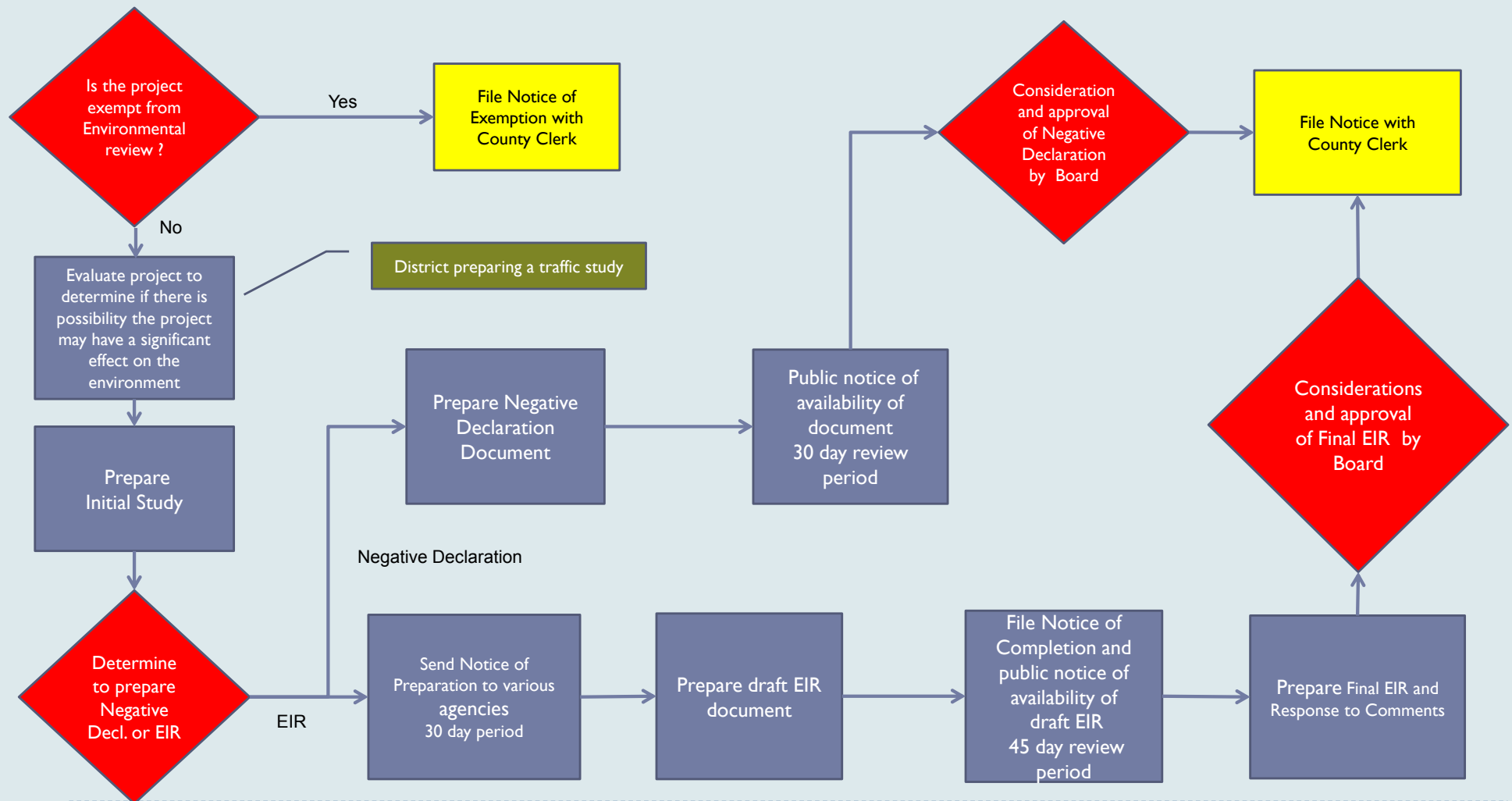
- Final Schematic Design approval by School Board



Community Input Process and Opportunity

- ▶ E-mail: connorinput@mpcsd.org
- ▶ Webpage: district.mpcsd.org – O'Connor School Site under the Facility Development Tab
- ▶ Volunteer Opportunity for District Parents and Willow Resident Neighbors to serve on the O'Connor Site Design Advisory Committee (1 to 2 people from each group)
 - ▶ E-mail your interest and background information to: ahmad@mpcsd.org by [November 15, 2013](#)
 - ▶ Commitment to attend 4-6 meetings annually for the next 2-3 years
 - ▶ Selection by District Facility Committee

Environmental Review Process*



* Simplified Flow Chart

O'Connor School Site Community Meeting November 6, 2013

Design Process Entities

- ▶ **School Board** – Approves the Schematic Plan, Final Design, Environmental Documents and all Contracts
- ▶ **District Facility Committee** – Reviews the work of Design Team and makes recommendations to the School Board
- ▶ **Site Design Advisory Committee** – Works with the Design Team to assist in the development the improvement plans
- ▶ **Design Team** – Develops the school plans and consist of the Architect, Engineers, Consultants, Construction Manager, and Director of Facilities and Operations

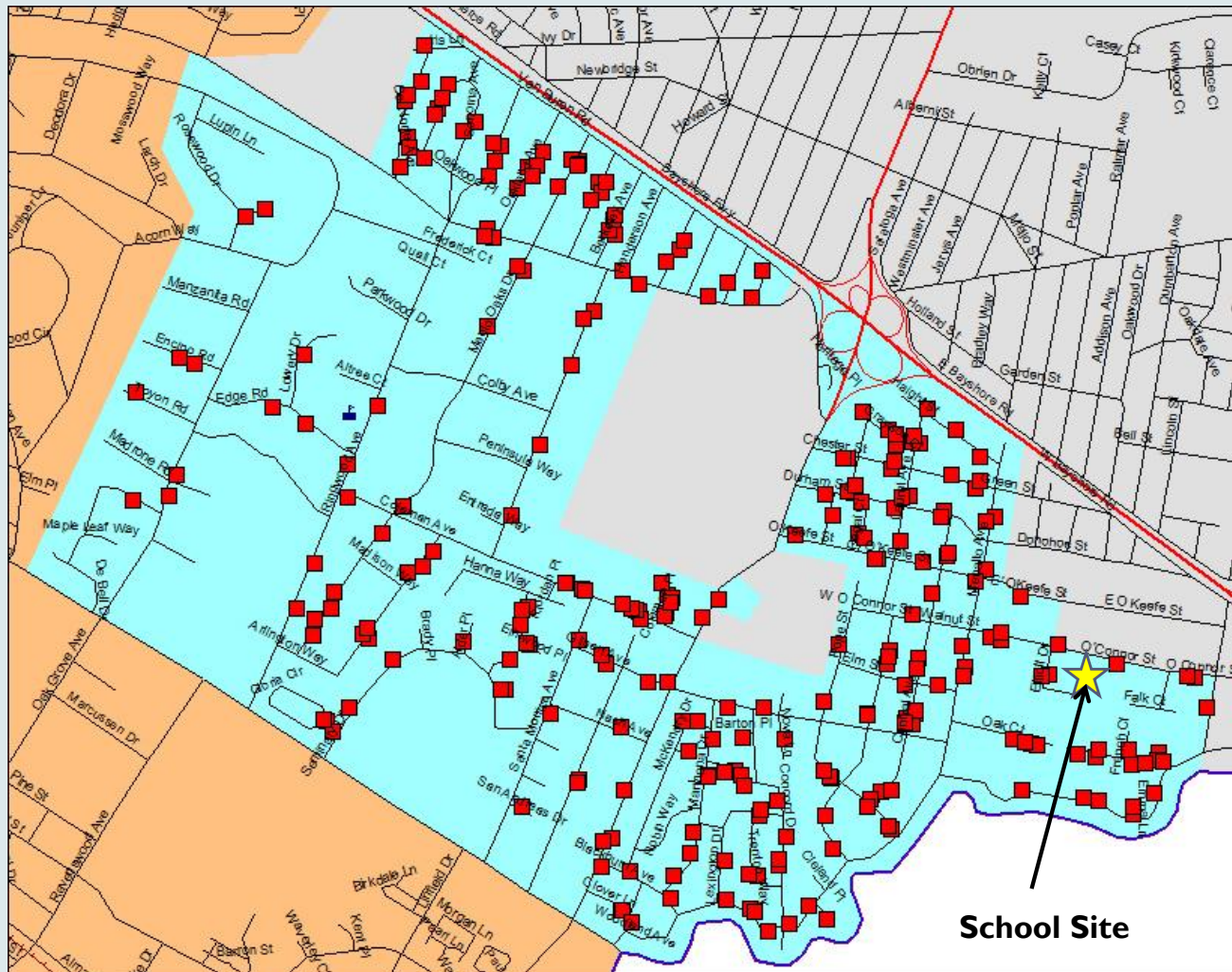


Design Development Guidelines

- ▶ **New School Design Based on Guiding Design Principles**
 - ▶ Board Approved Guidelines (2007 Master Plan)
 - ▶ Guidelines Posted on the Web Site
- ▶ **Environmental Guidelines**
 - ▶ Collaborative High Performance Schools (CHPS)
 - ▶ “Green” Guidelines similar to LEEDS
- ▶ **Educational Specifications**
 - ▶ Specific details of facility spaces



O'Connor as Neighborhood School



- Red squares represents 3-5 Grade Students in Laurel Attendance Boundary
- Majority of Students within easy walking and biking distance
- Reduce Traffic to Encinal and Oak Knoll School
- Reduce traffic and travel times from home to school

Concept Plans O'Connor Elementary School

Menlo Park City School District

6 November 2013

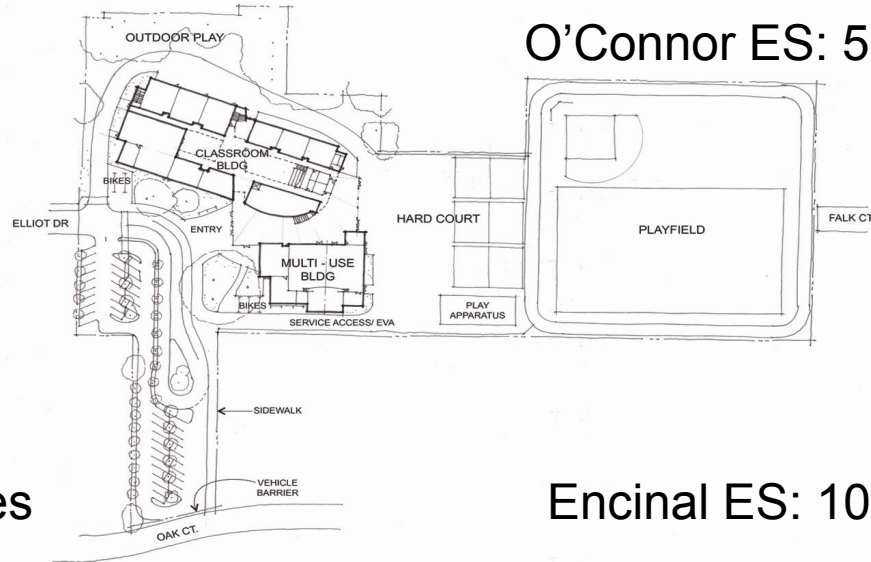




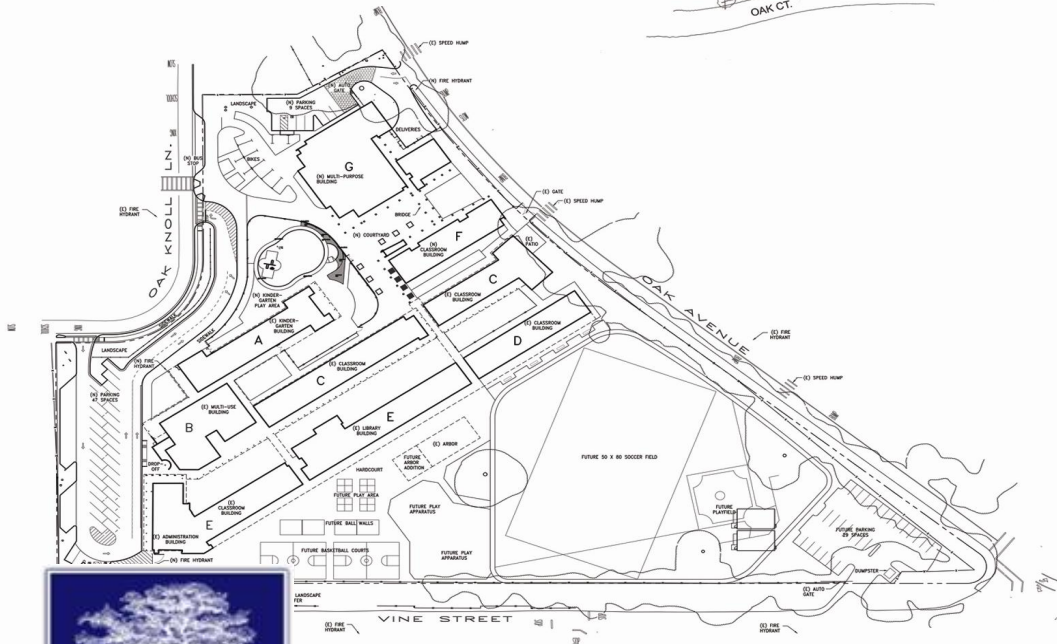
Existing Site Plan O'Connor Elementary School



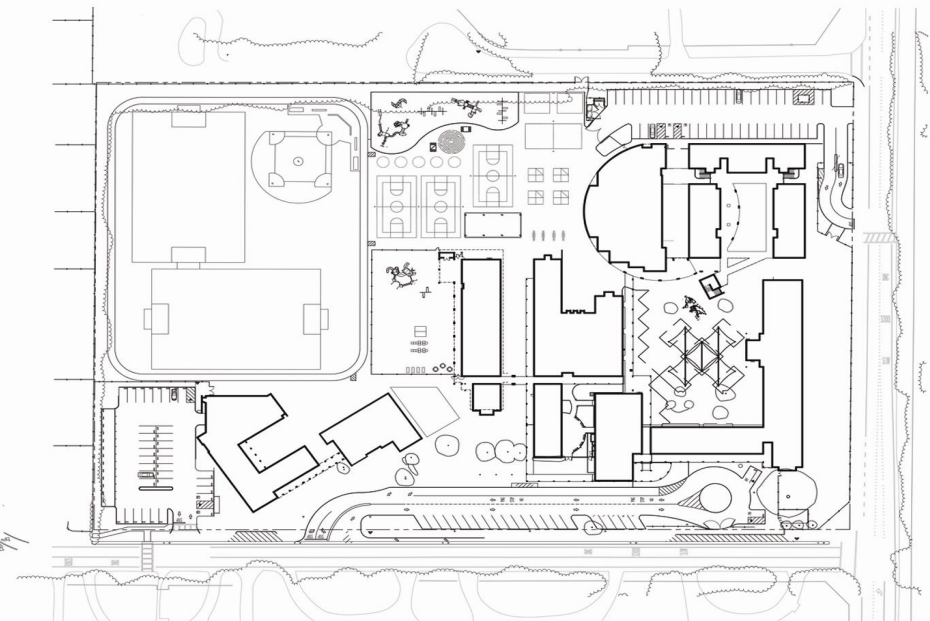
O'Connor ES: 5.90 acres



Oak Knoll ES: 8.00 acres



Encinal ES: 10.13 acres



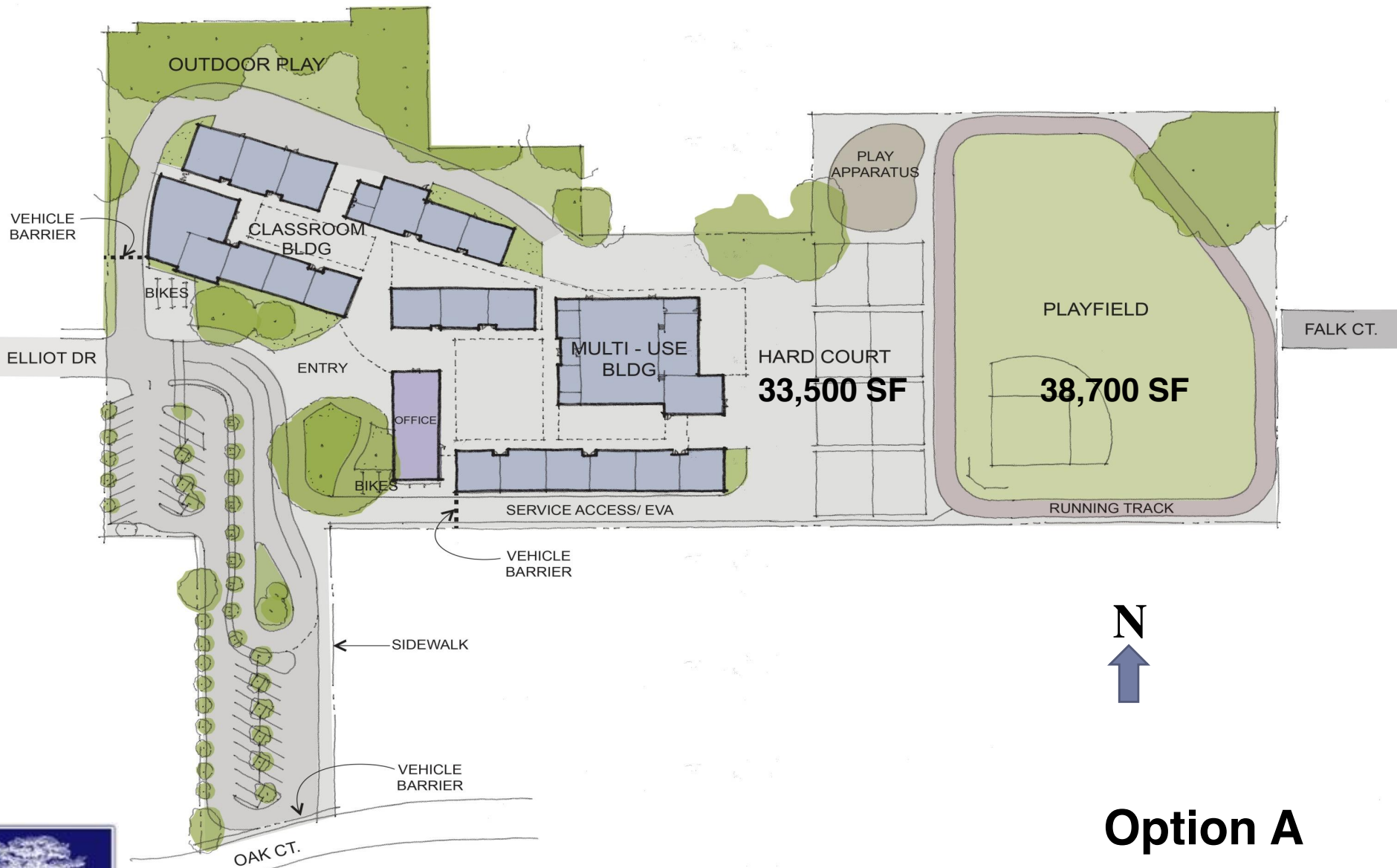
Site Comparison (approx. acreage)
O'Connor Elementary School





Existing Site Plan O'Connor Elementary School

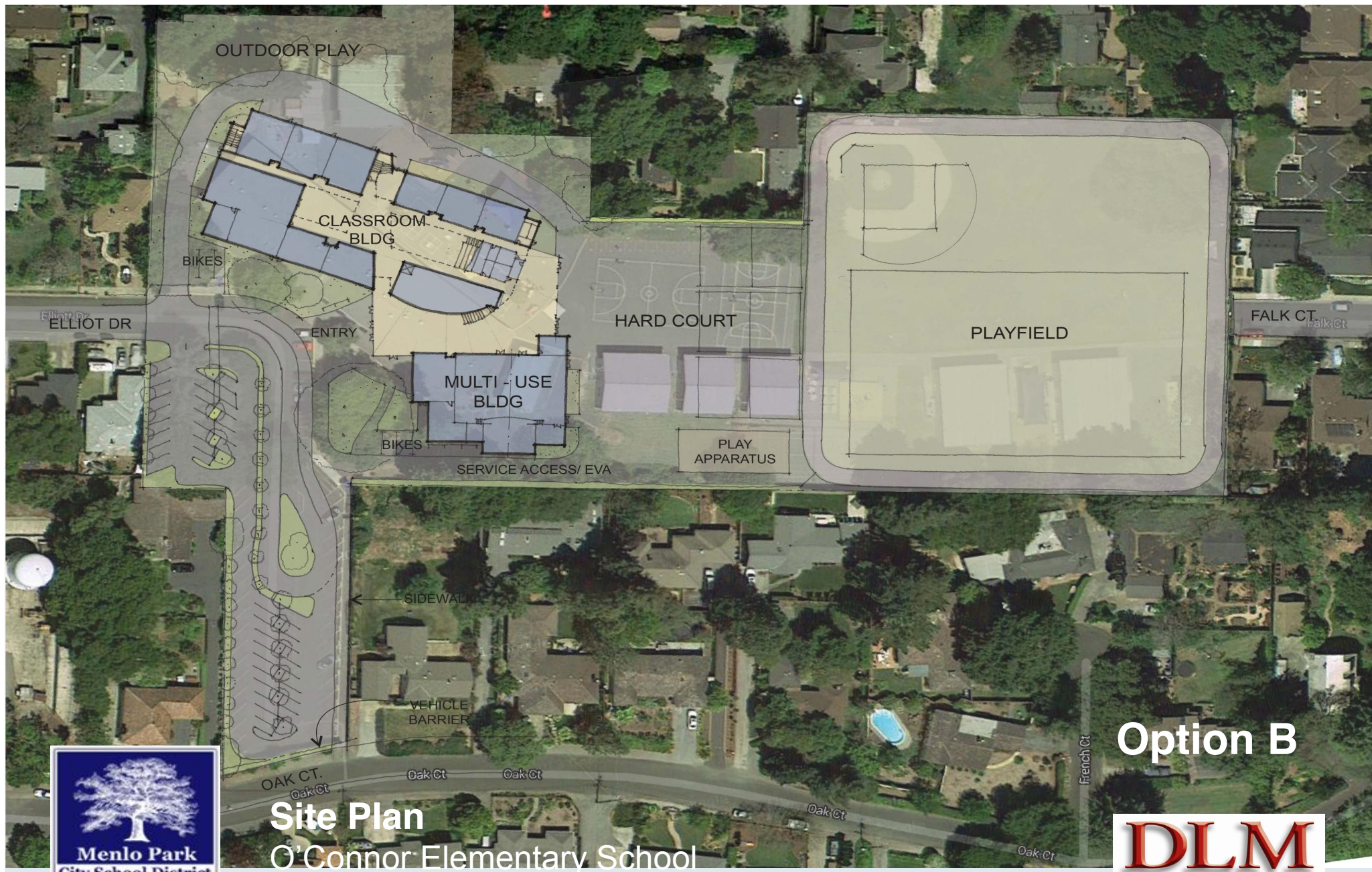




Site Plan: Single Story Scheme

O'Connor Elementary School



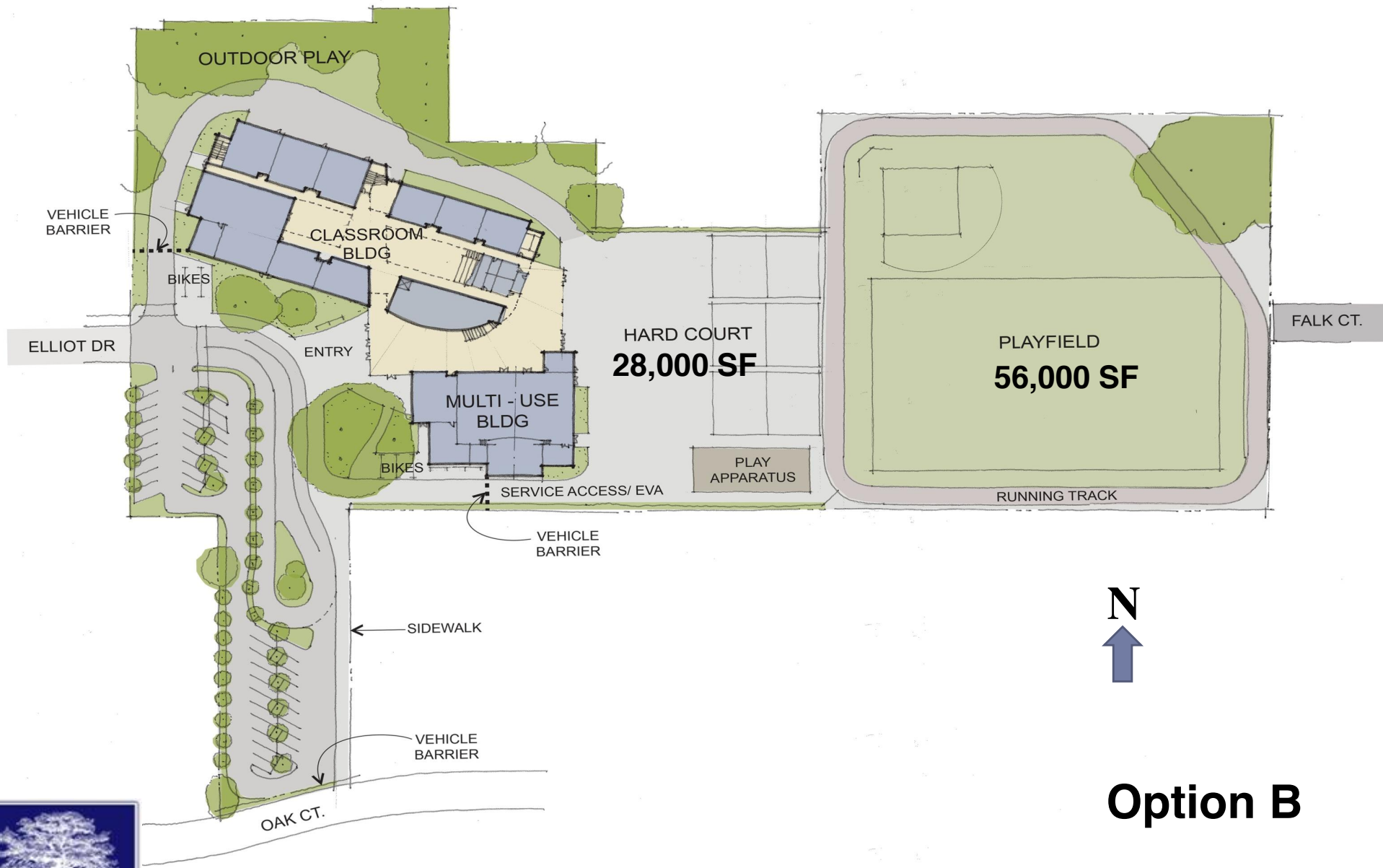


Site Plan

O'Connor Elementary School

Option B



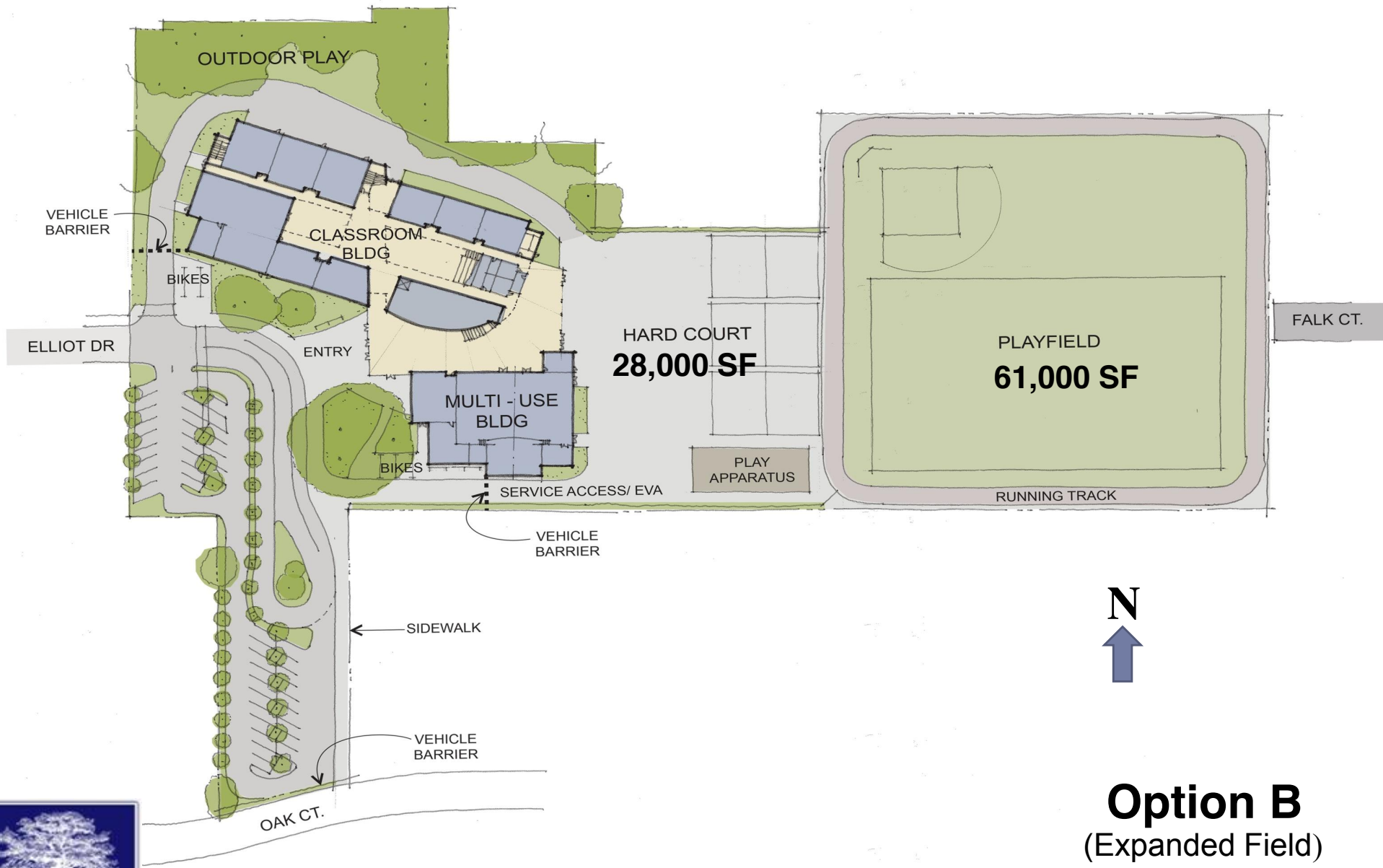


Option B



Site Plan: Two Story Scheme O'Connor Elementary School

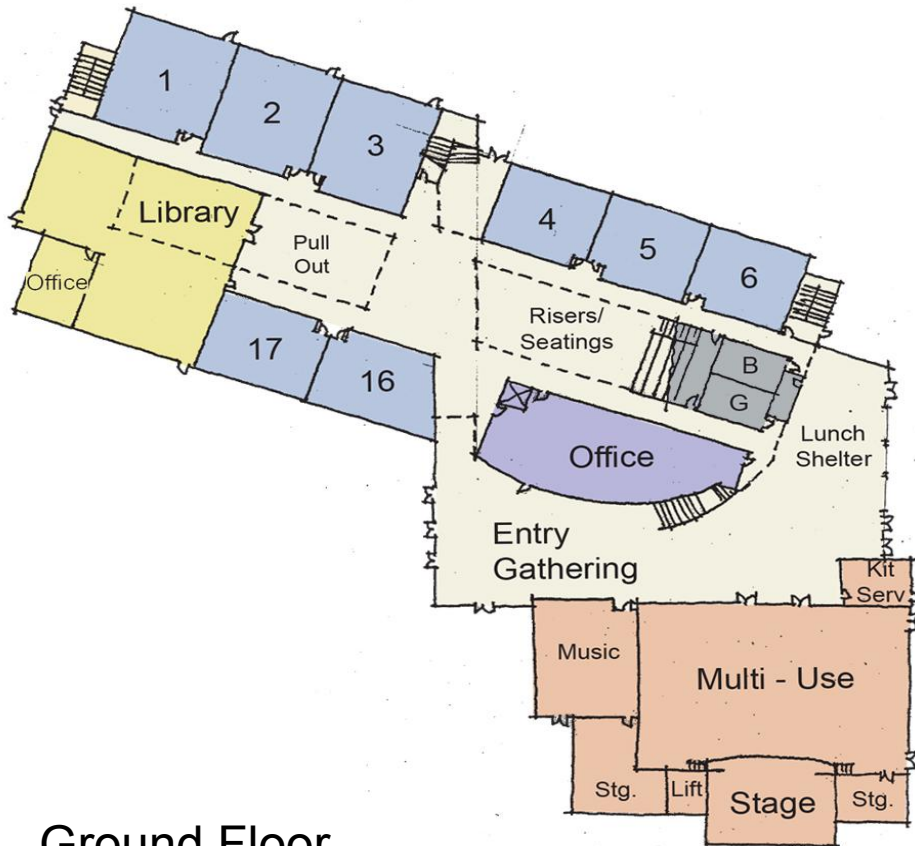
DLM
DEEMS LEWIS MCKINLEY



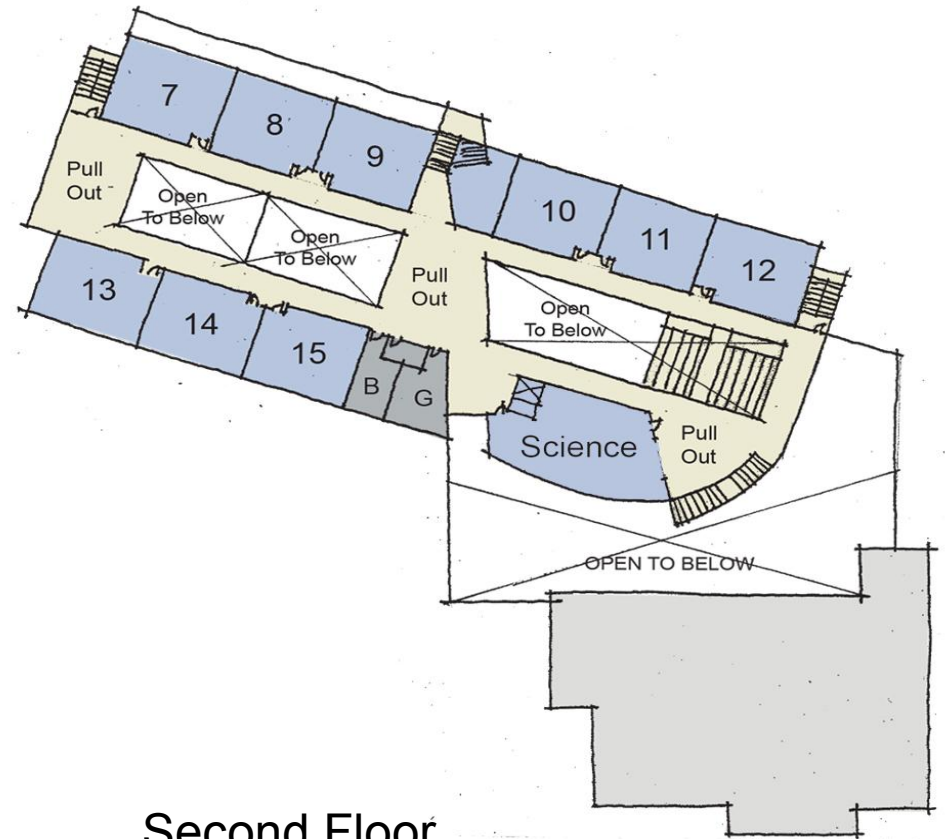
Site Plan: Two Story Scheme O'Connor Elementary School

Option B
(Expanded Field)

DLM
DEEMS LEWIS MCKINLEY



Ground Floor



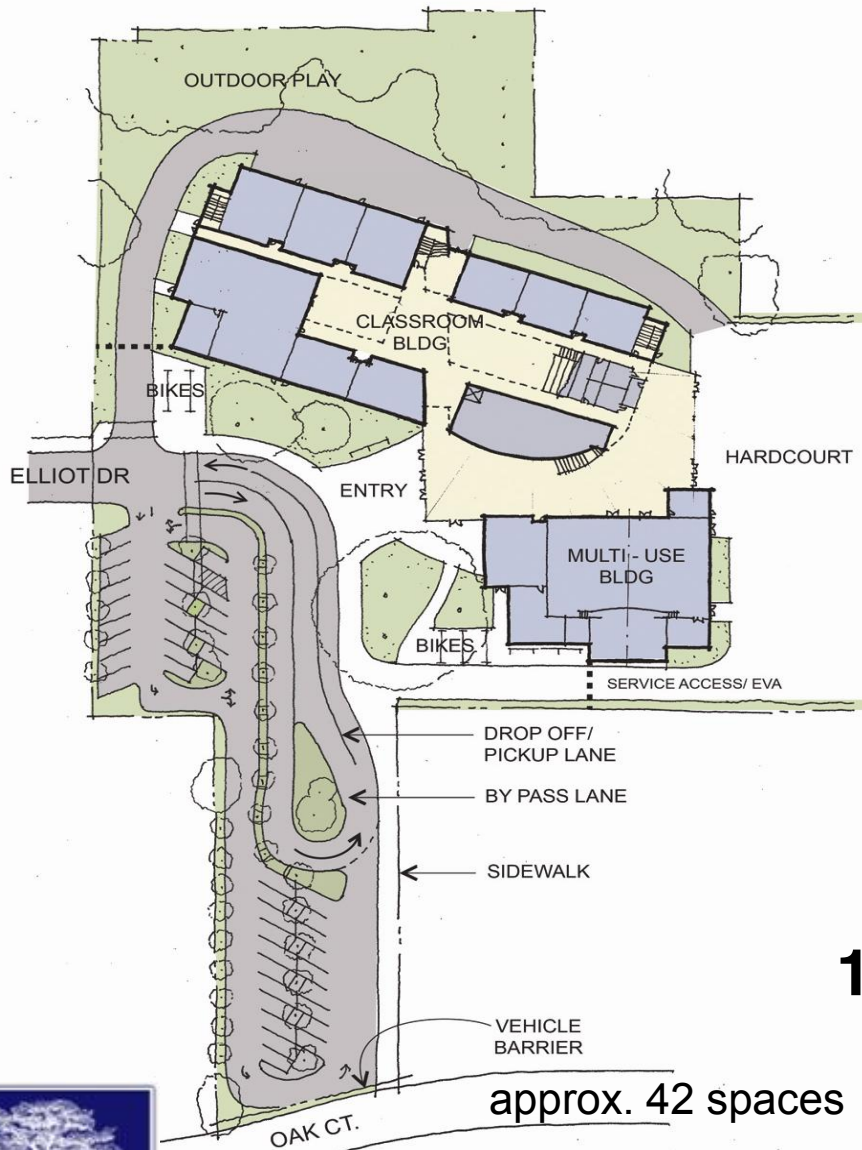
Second Floor



Floor Plans: Two Story Scheme O'Connor Elementary School

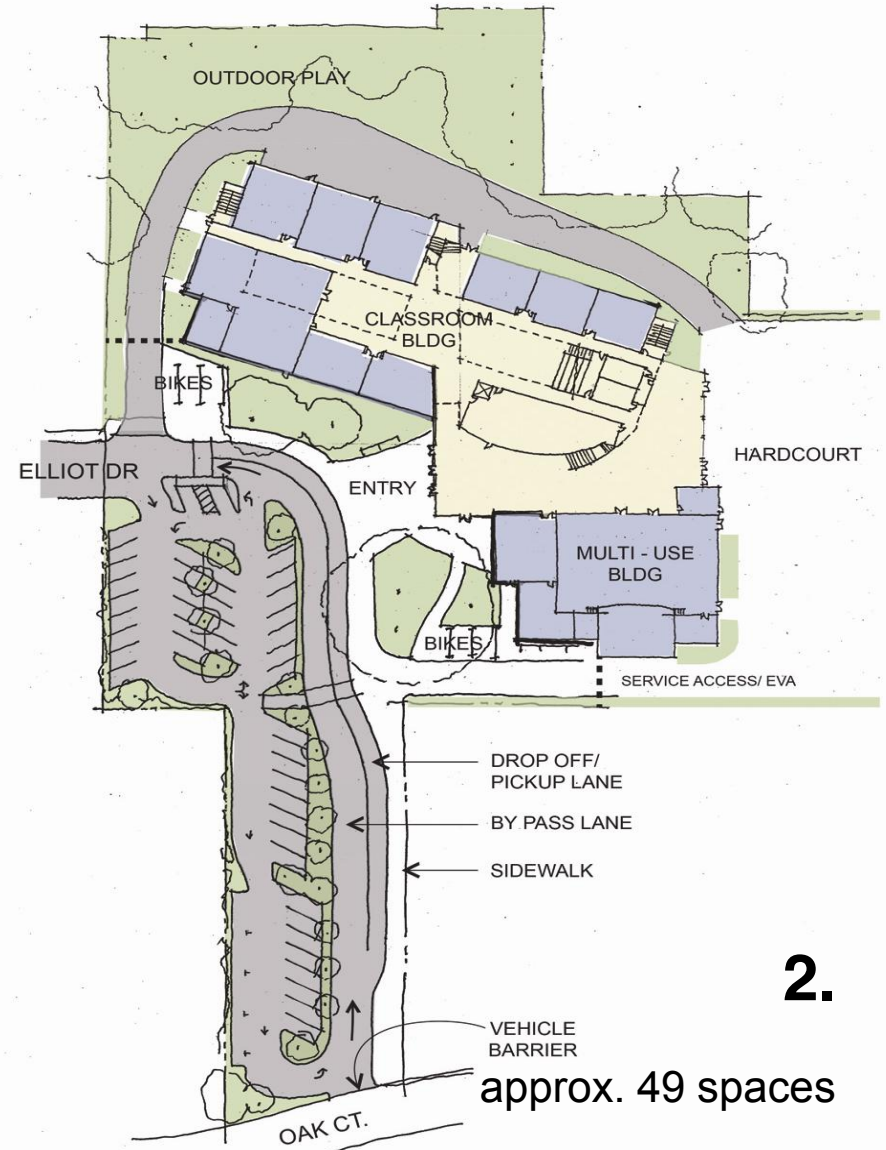
Option B





1.

approx. 42 spaces



2.

approx. 49 spaces



Parking and Drop-off Concept Plan O'Connor Elementary School





DLM

ARCHITECTURE



Next Steps

- ▶ **Tuesday, November 12, 2013**
Community Meeting 8:30 - 10:30 a.m. at Laurel School
- ▶ **Tuesday, December 10, 2013**
Regular Board Meeting 6PM at District Office
 - ▶ Architect to present updated schematic plans
 - ▶ School Board provide direction to Architect
- ▶ **Tuesday, January 7, 2014**
Special Board Meeting 7PM at Laurel School
 - ▶ Architect presents updated schematic plans / elevations
 - ▶ School Board provides direction to Architect
- ▶ **Tuesday, February 11, 2014**
Regular Board Meeting 6PM at District Office
 - ▶ Final Schematic Design approval by School Board

