



Oak Knoll School



Encinal School



Hillview Middle School



Laurel School

Menlo Park City School District New Grade 3-5 School Presentation (O'Connor Site)

February 11, 2014 School Board Meeting

Presentation Agenda

- Review Architectural Plans and Renderings
- Review School Entrance Design Options
- Question and Answer
- Public Comment
- Deliberation and Action

Schematic Design Laurel School

New 3-5 Grade School (O'Connor Site)

Menlo Park City School District

11 February 2014





Existing Site Plan New 3-5 Grade School (O'Connor Site)



Schematic Design

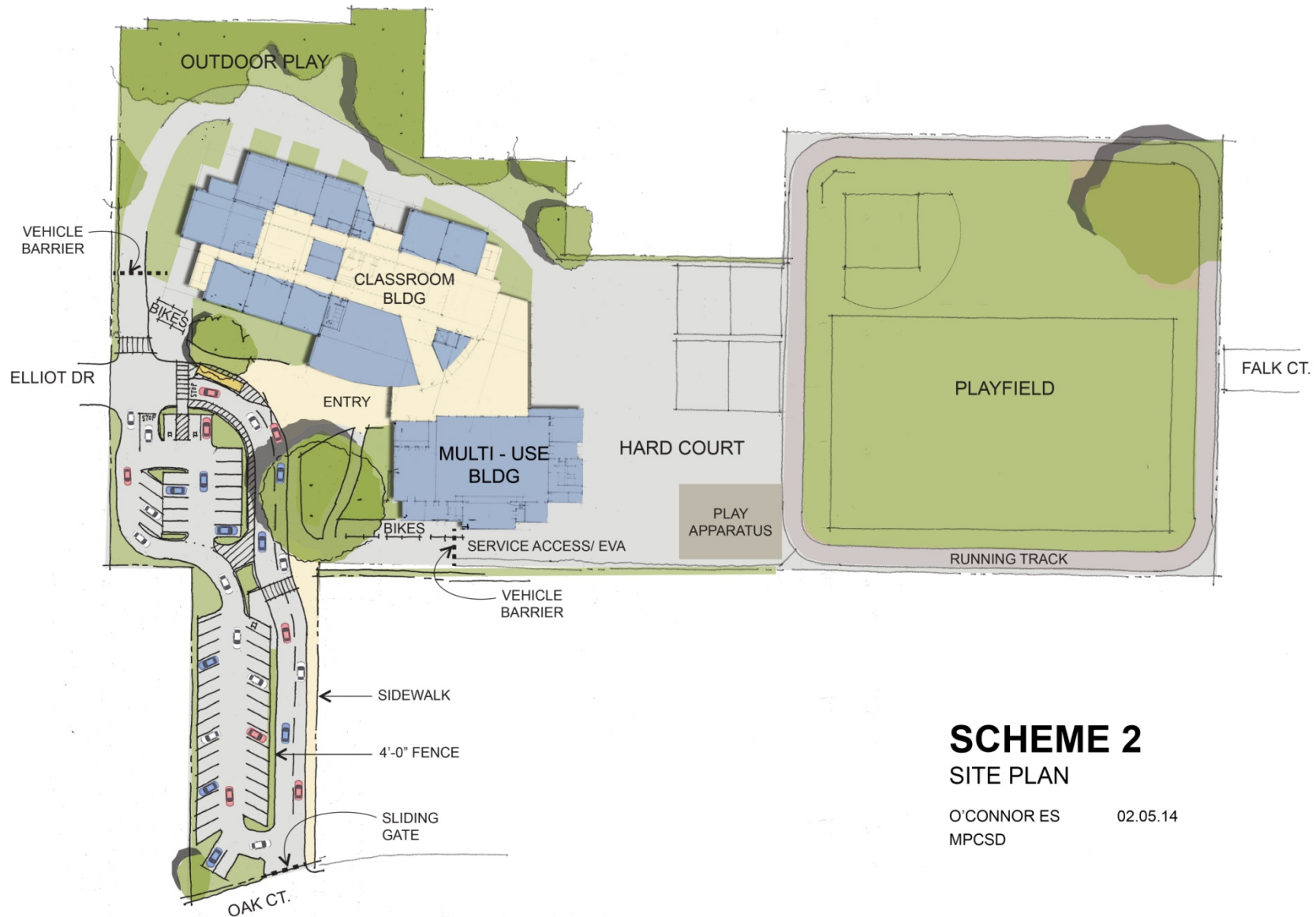
Program Elements: 3-5 Grade School

- 14 Classrooms (standard 960 SF)
- 2 Larger Classrooms (1,100 SF)
- Art Classroom
- Science Classroom
- Music Classroom
- Library
- Multi-purpose Room with Stage
- Kitchen
- Administration
- Support Spaces



New 3-5 Grade School (O'Connor Site)





SCHEME 2 SITE PLAN

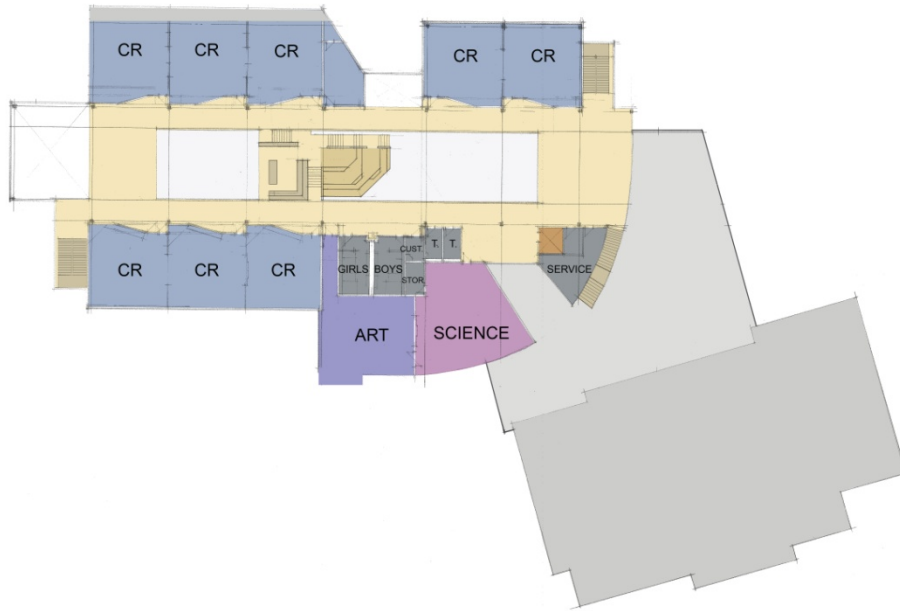
O'CONNOR ES
MPCSD

02.05.14

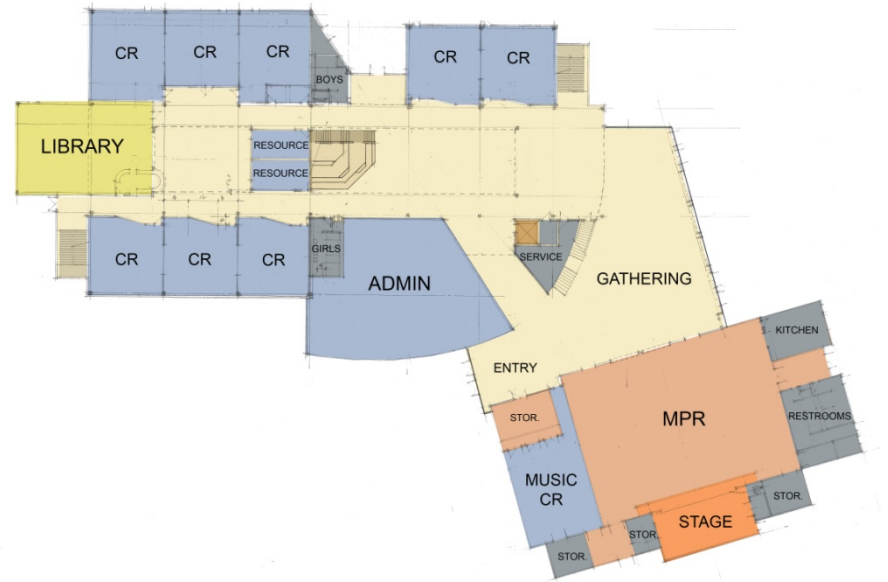


Site Plan New 3-5 Grade School (O'Connor Site)





Second Floor

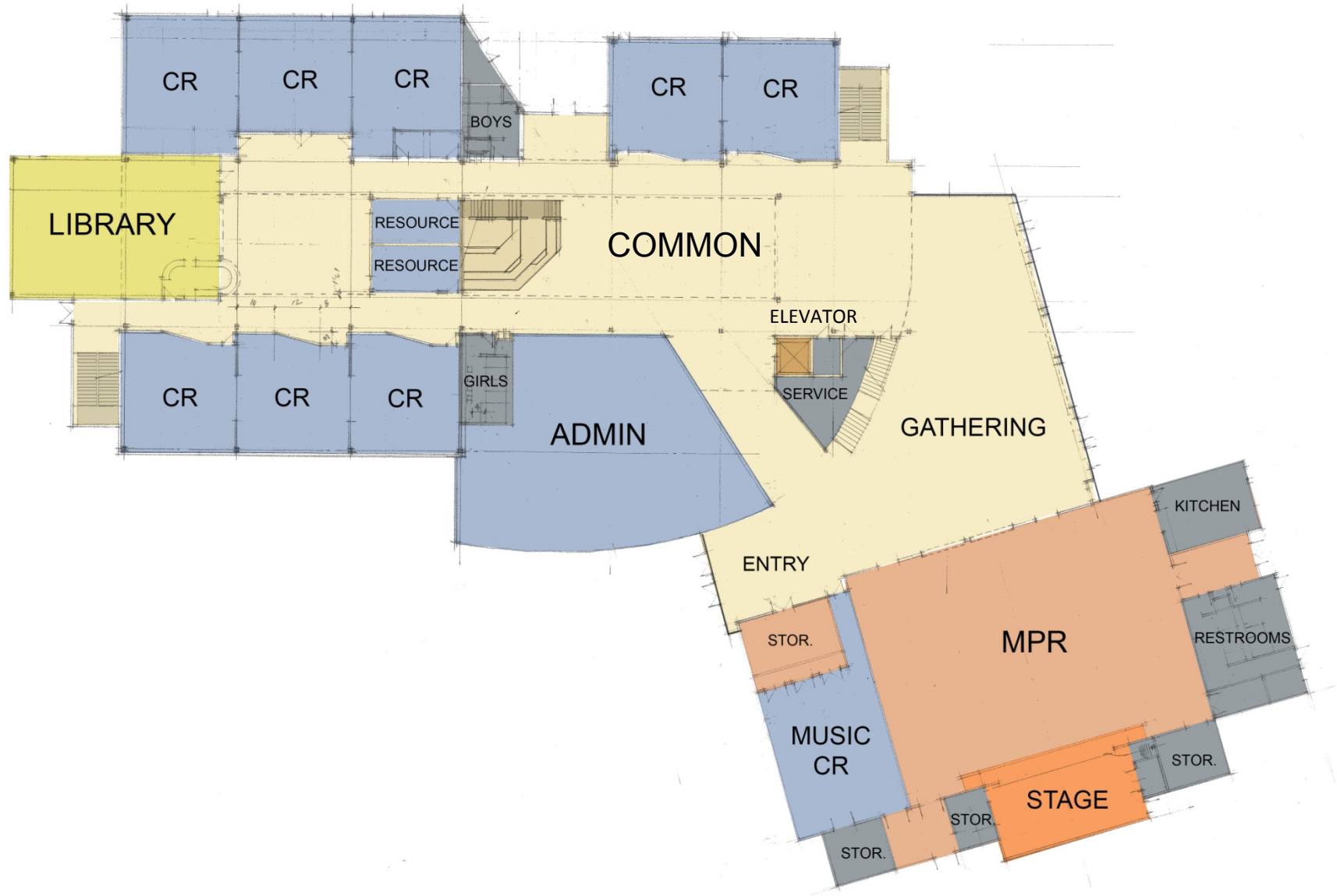


First Floor



Floor Plans:
New 3-5 Grade School (O'Connor Site)

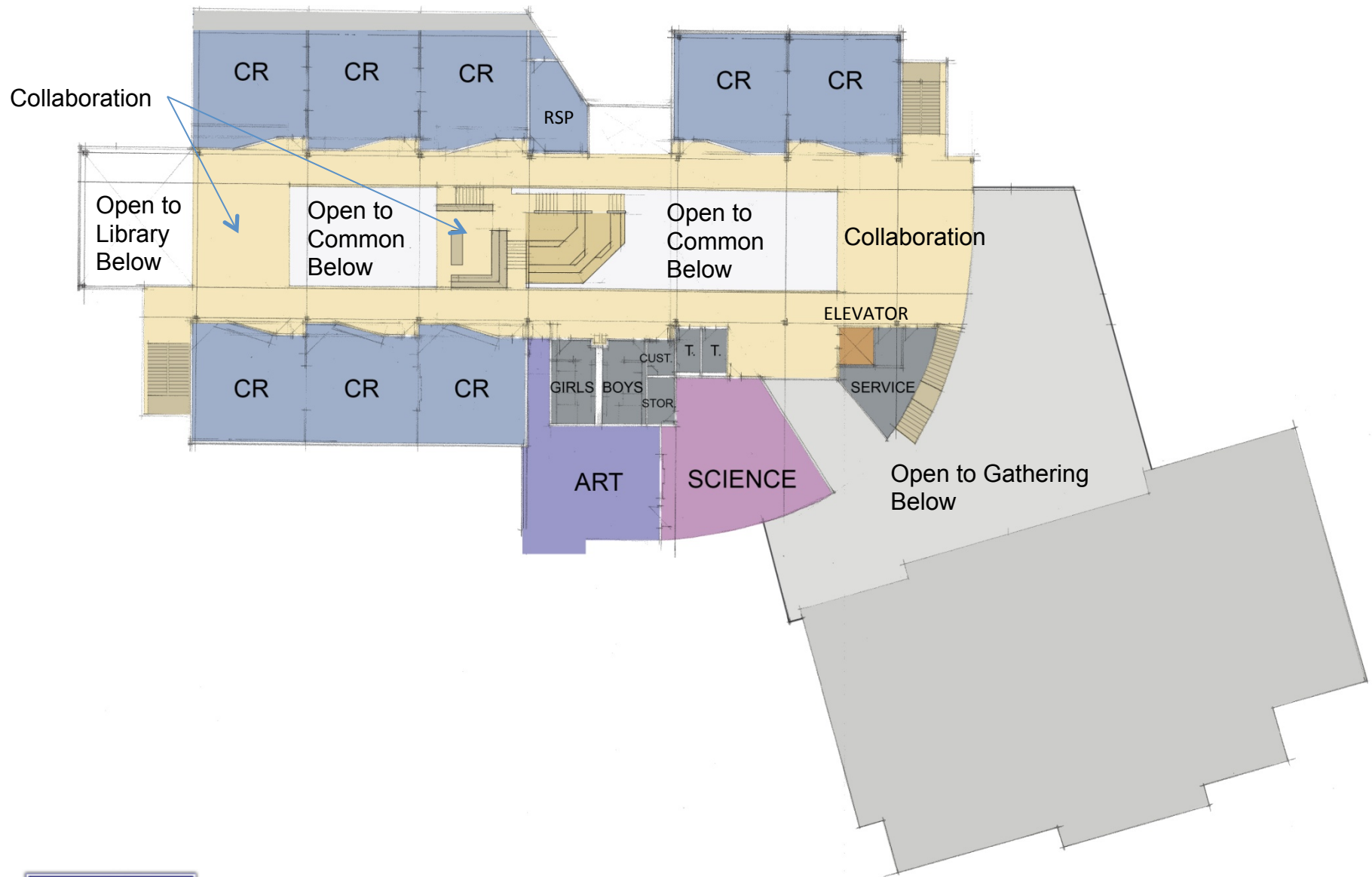




First Floor Plan

New 3-5 Grade School (O'Connor Site)

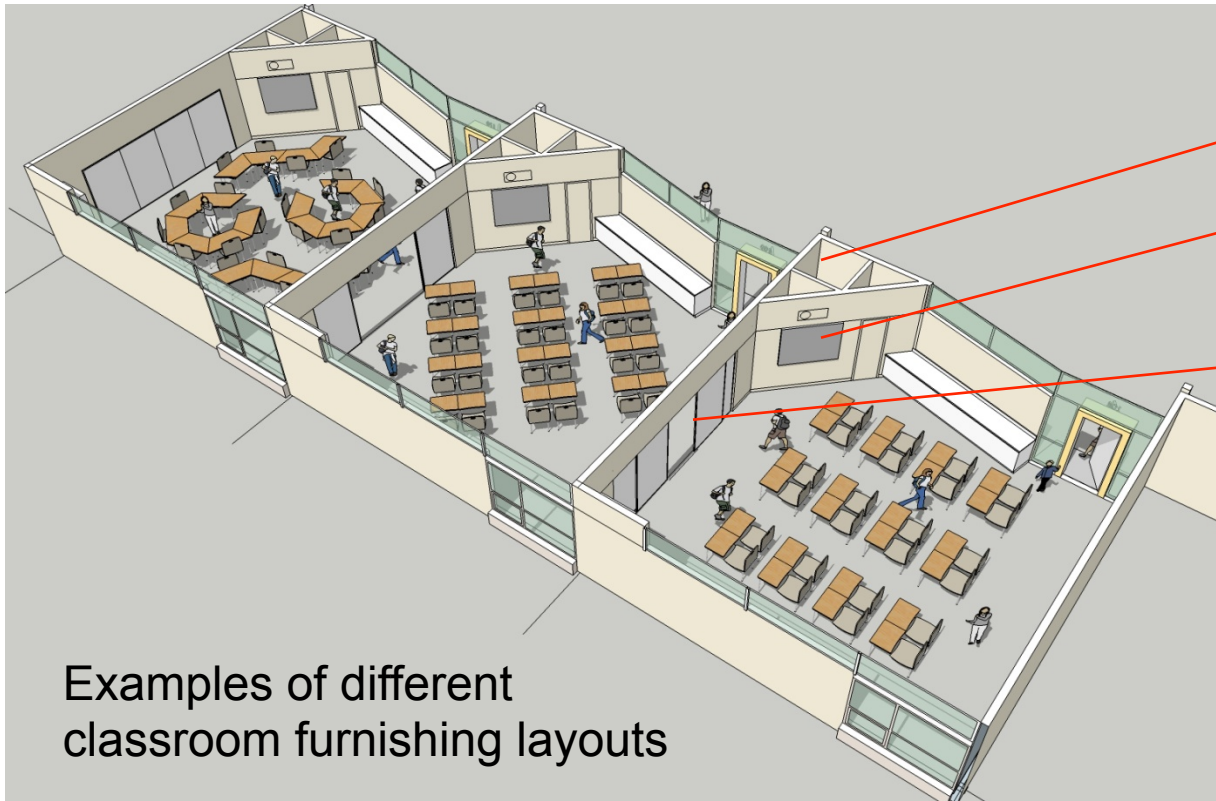




Second Floor Plan

New 3-5 Grade School (O'Connor Site)





Mech Unit and Service

Interactive Flat Screen

Sliding Marker Boards

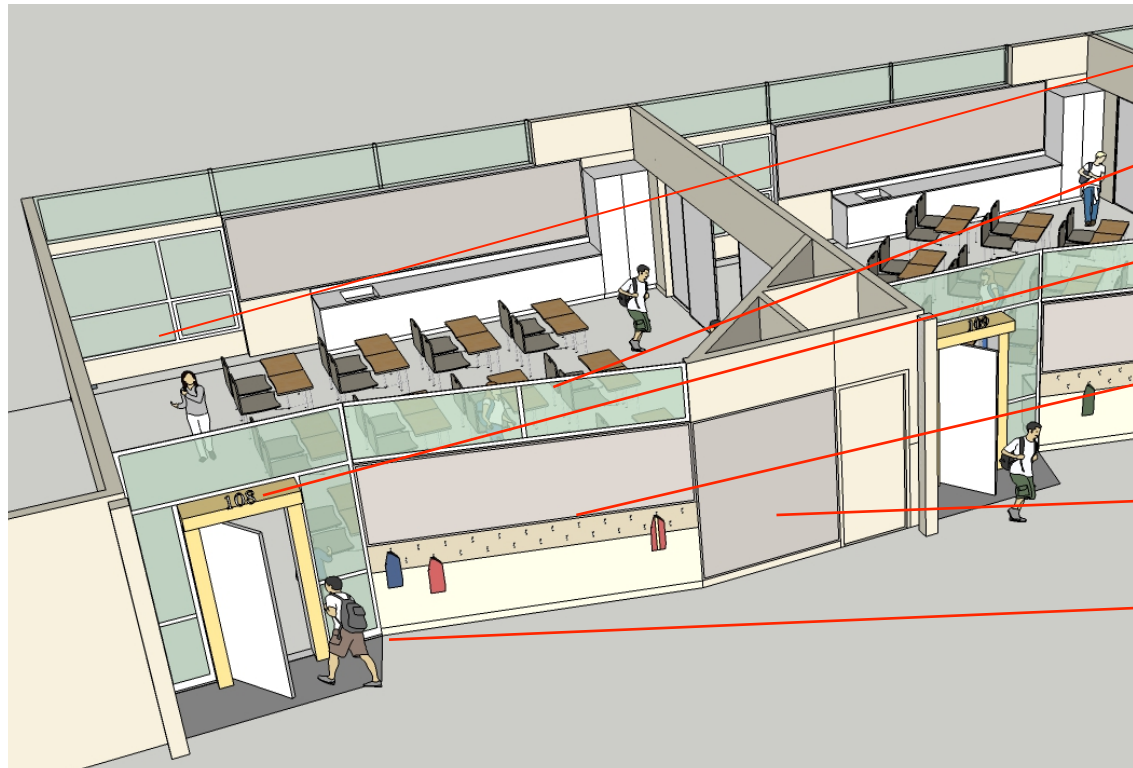
Opens to provide 8 ft. access between classrooms

Examples of different classroom furnishing layouts



Typical Classrooms
New 3-5 Grade School (O'Connor Site)





Operable Window

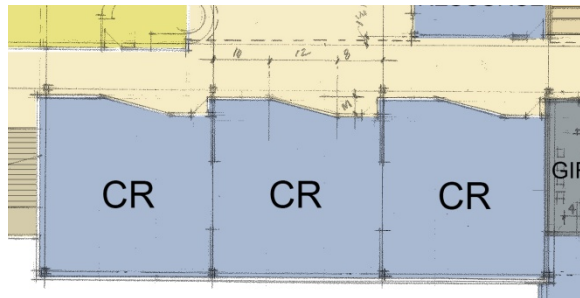
High Window

Room Numbers

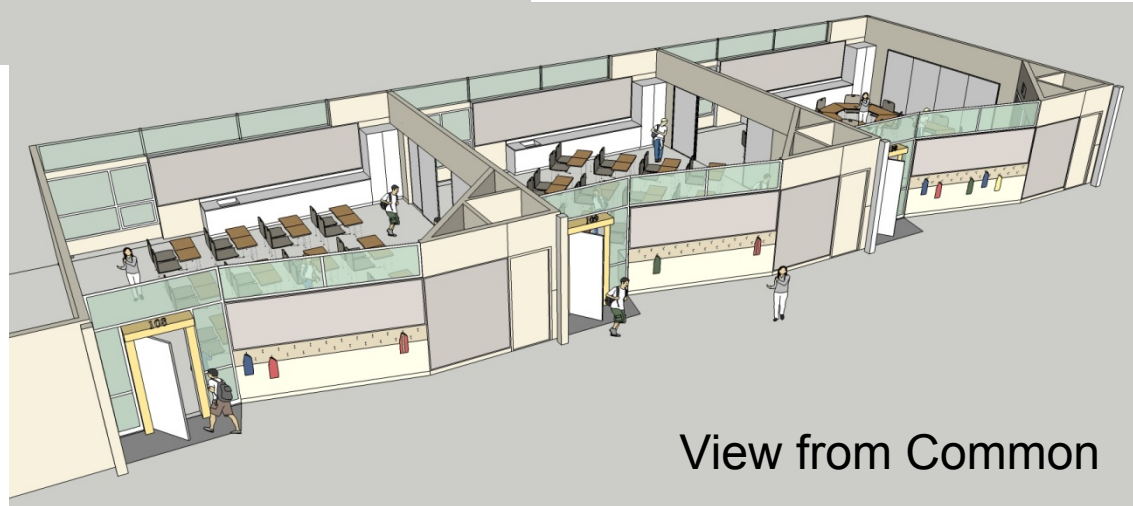
Coat Hooks are out of path of travel

Tack-board walls

Entry Door and Mat



Partial Plan



View from Common



Classroom Entry from Common

New 3-5 Grade School (O'Connor Site)





Second Floor Plan

New 3-5 Grade School (O'Connor Site)





Second Floor Plan

New 3-5 Grade School (O'Connor Site)





View from Elliott Dr.



Second Floor Plan

New 3-5 Grade School (O'Connor Site)





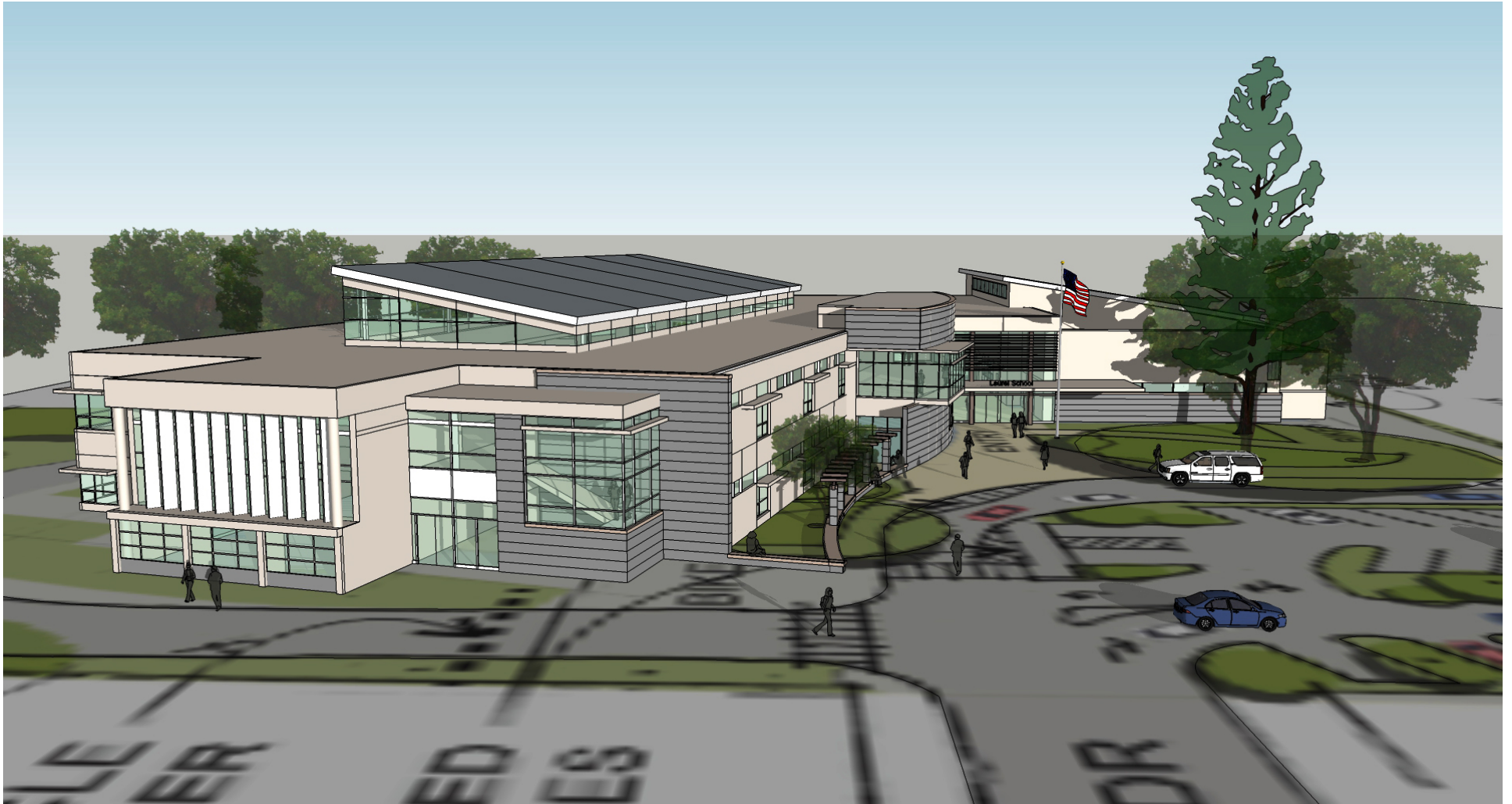
View from Parking Lot



Second Floor Plan

New 3-5 Grade School (O'Connor Site)





Arial View from Elliott Dr.



Second Floor Plan
New 3-5 Grade School (O'Connor Site)





Second Floor Plan

New 3-5 Grade School (O'Connor Site)





View from Outdoor Play Area



Second Floor Plan

New 3-5 Grade School (O'Connor Site)





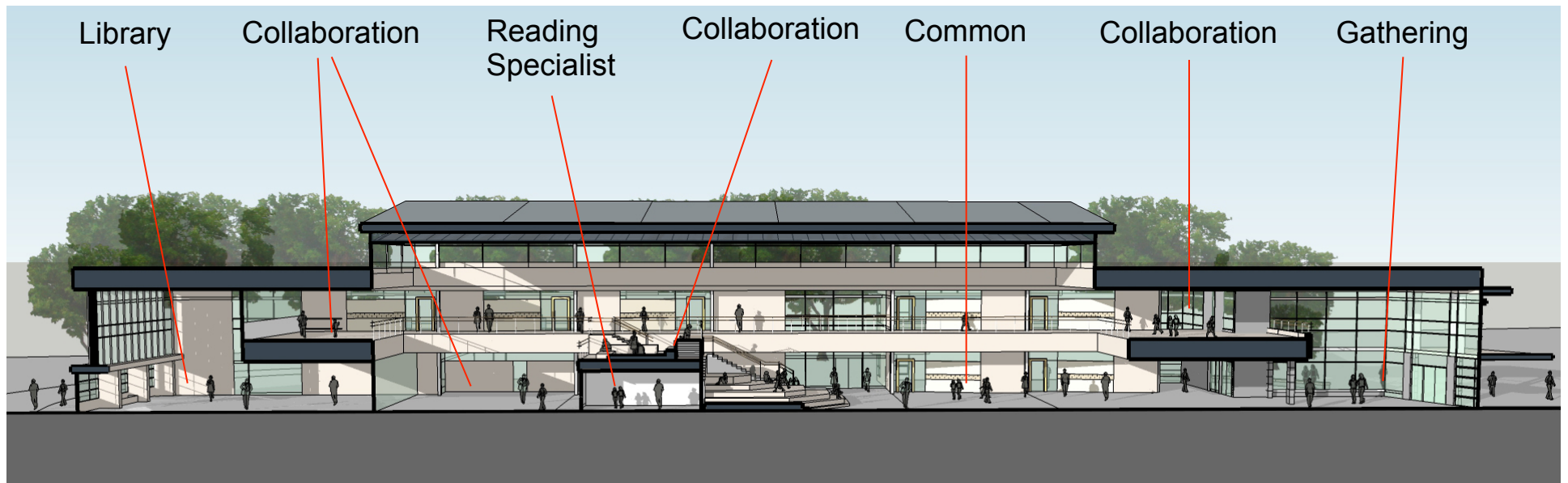
View from Hard-court and Field Area



Second Floor Plan

New 3-5 Grade School (O'Connor Site)





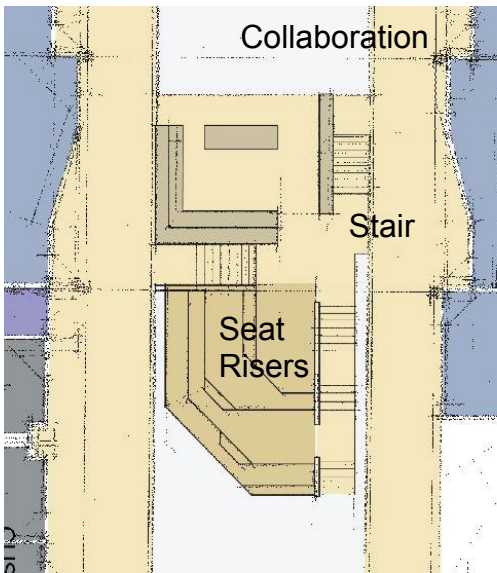
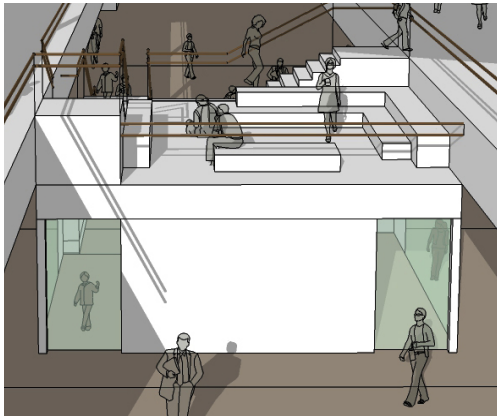
Section Through Common



Second Floor Plan

New 3-5 Grade School (O'Connor Site)

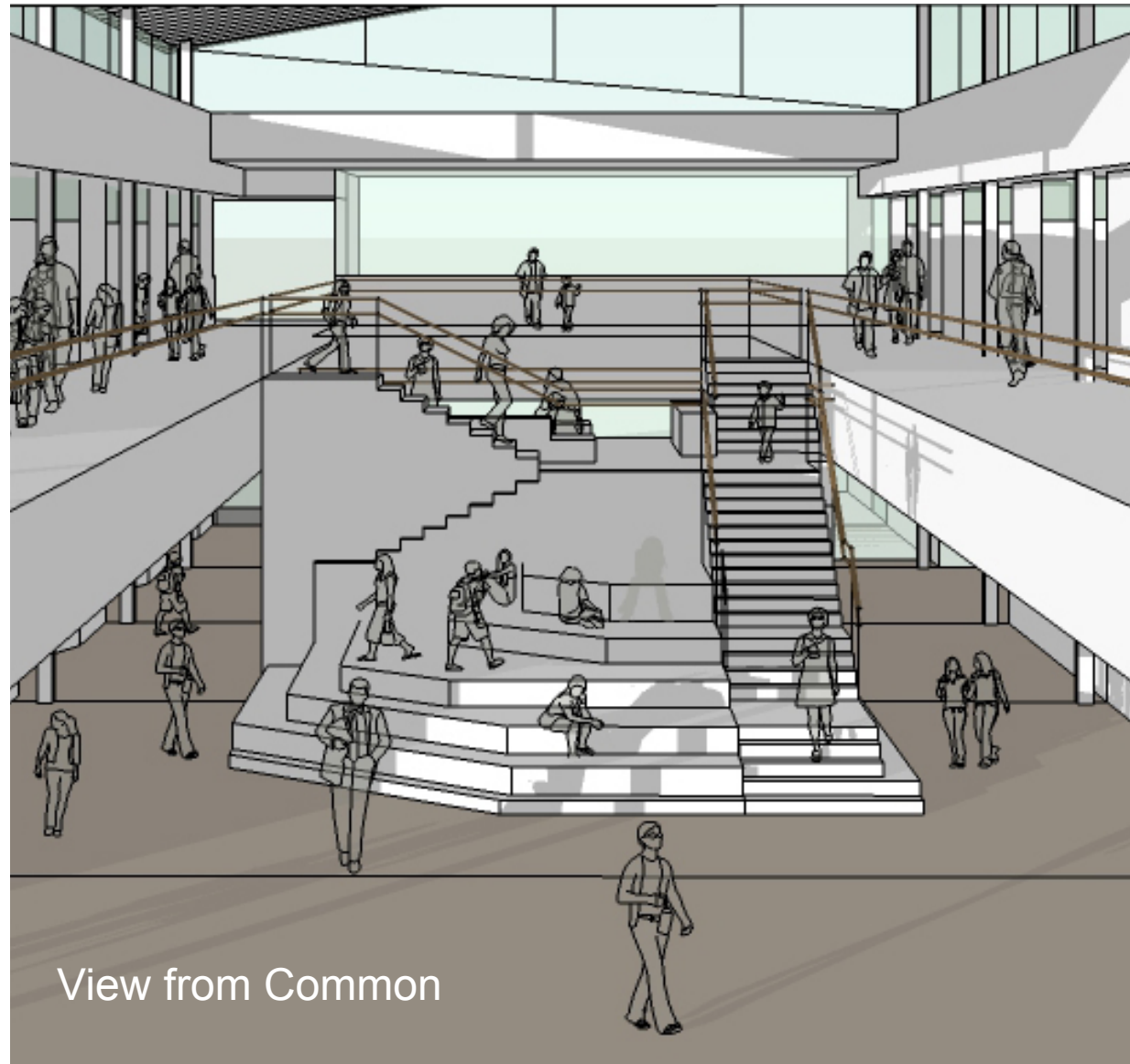




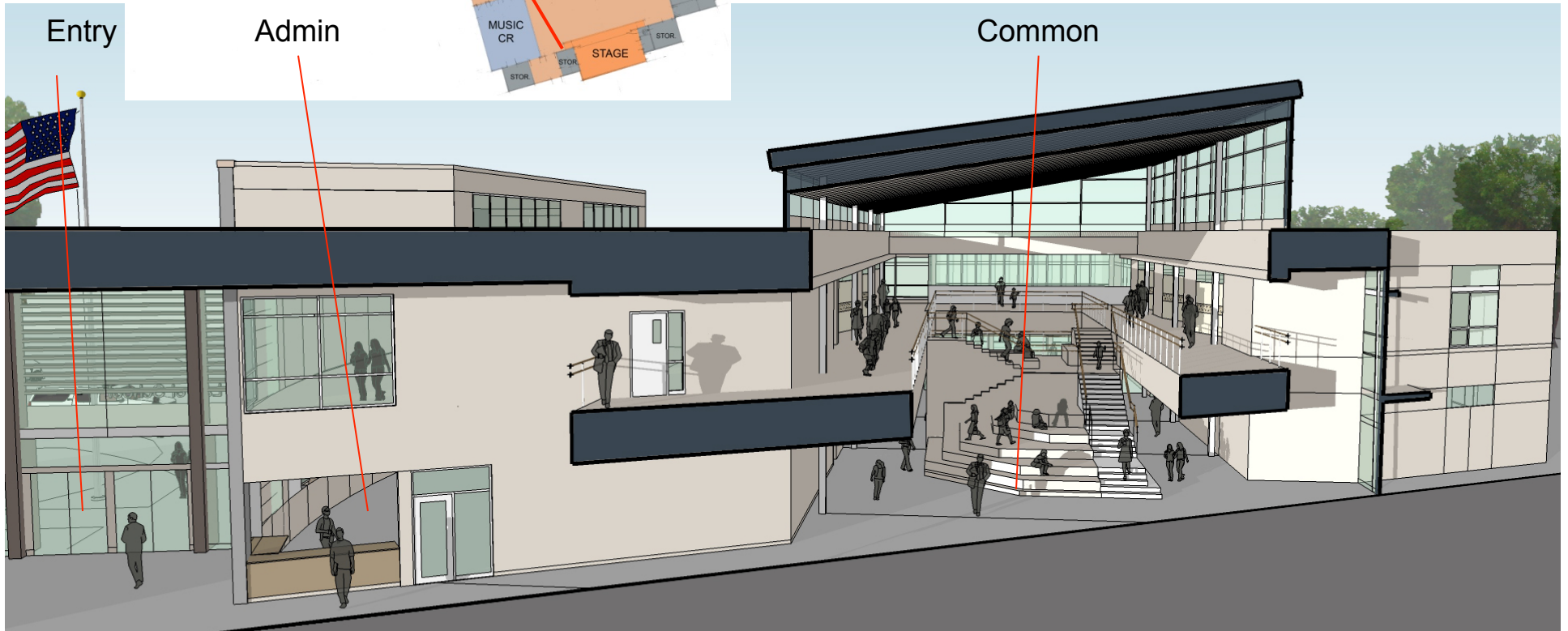
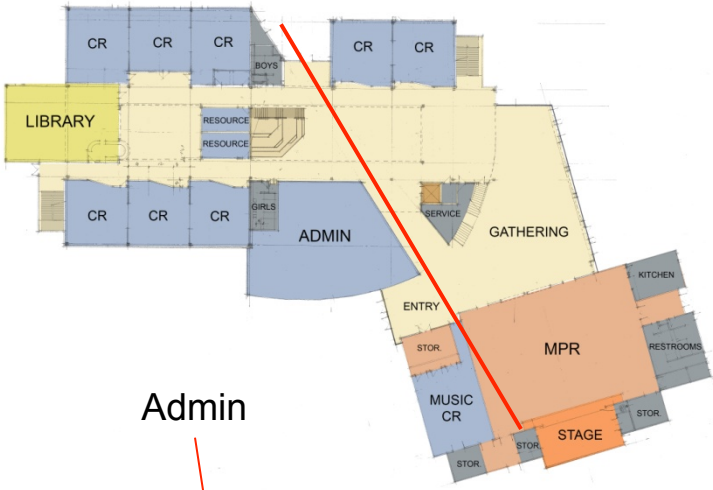
Partial Plan



Main Stair and Seat Risers: New 3-5 Grade School (O'Connor Site)



View from Common

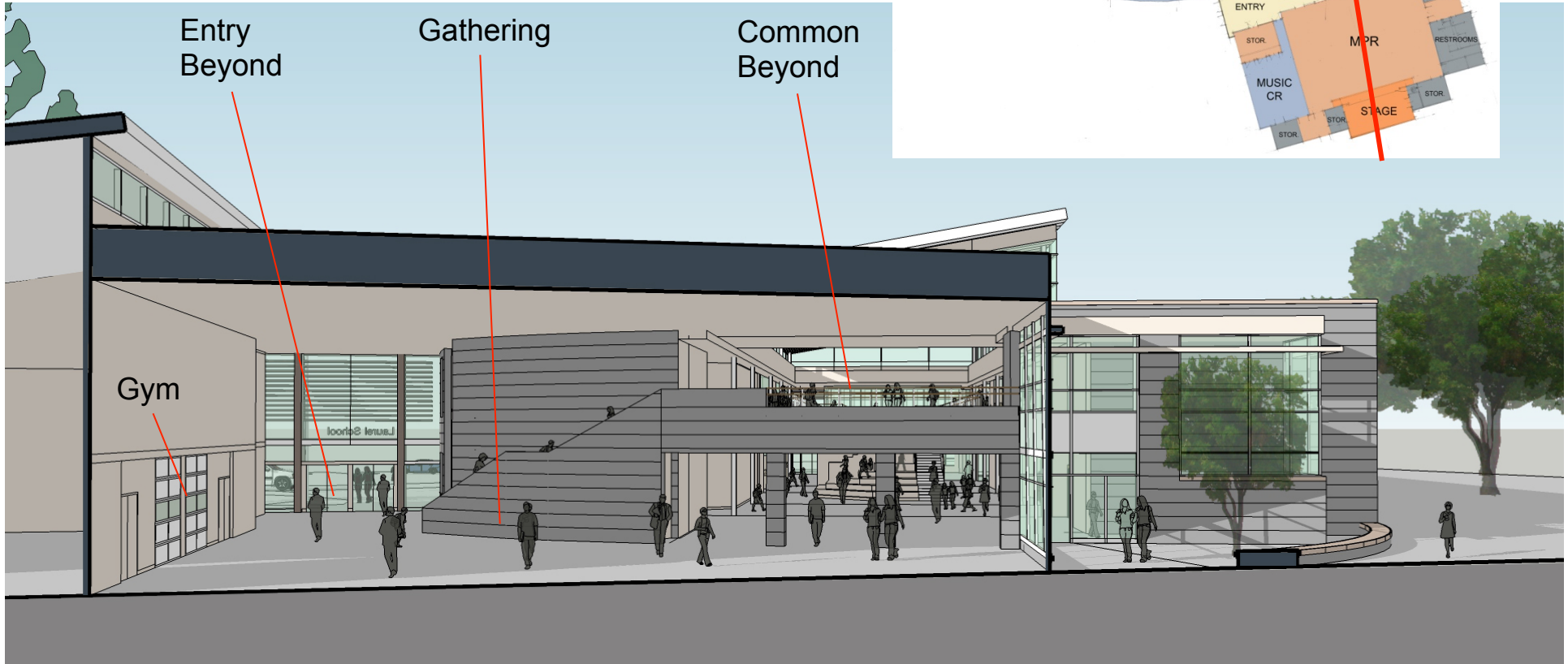


Section through Gathering and Common



Second Floor Plan
New 3-5 Grade School (O'Connor Site)



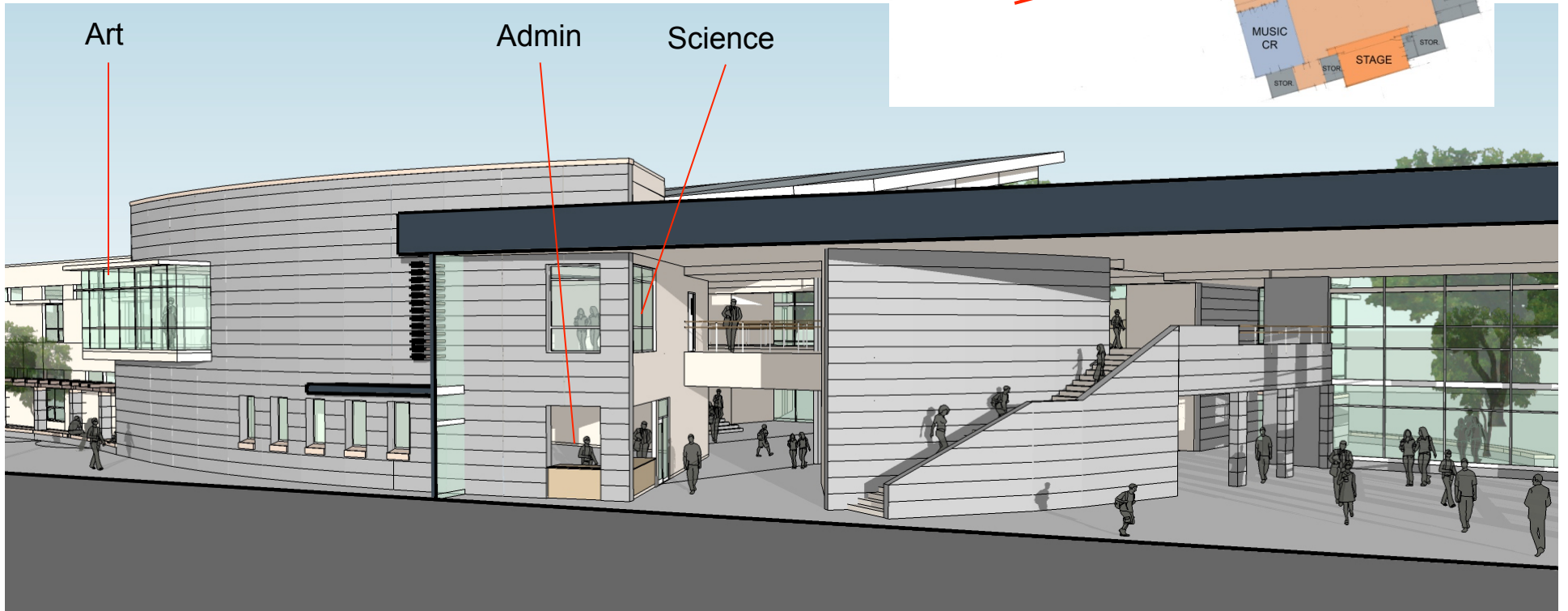


Second Floor Plan

New 3-5 Grade School (O'Connor Site)

Section Through Gathering





Second Floor Plan

New 3-5 Grade School (O'Connor Site)

Section Through Gathering





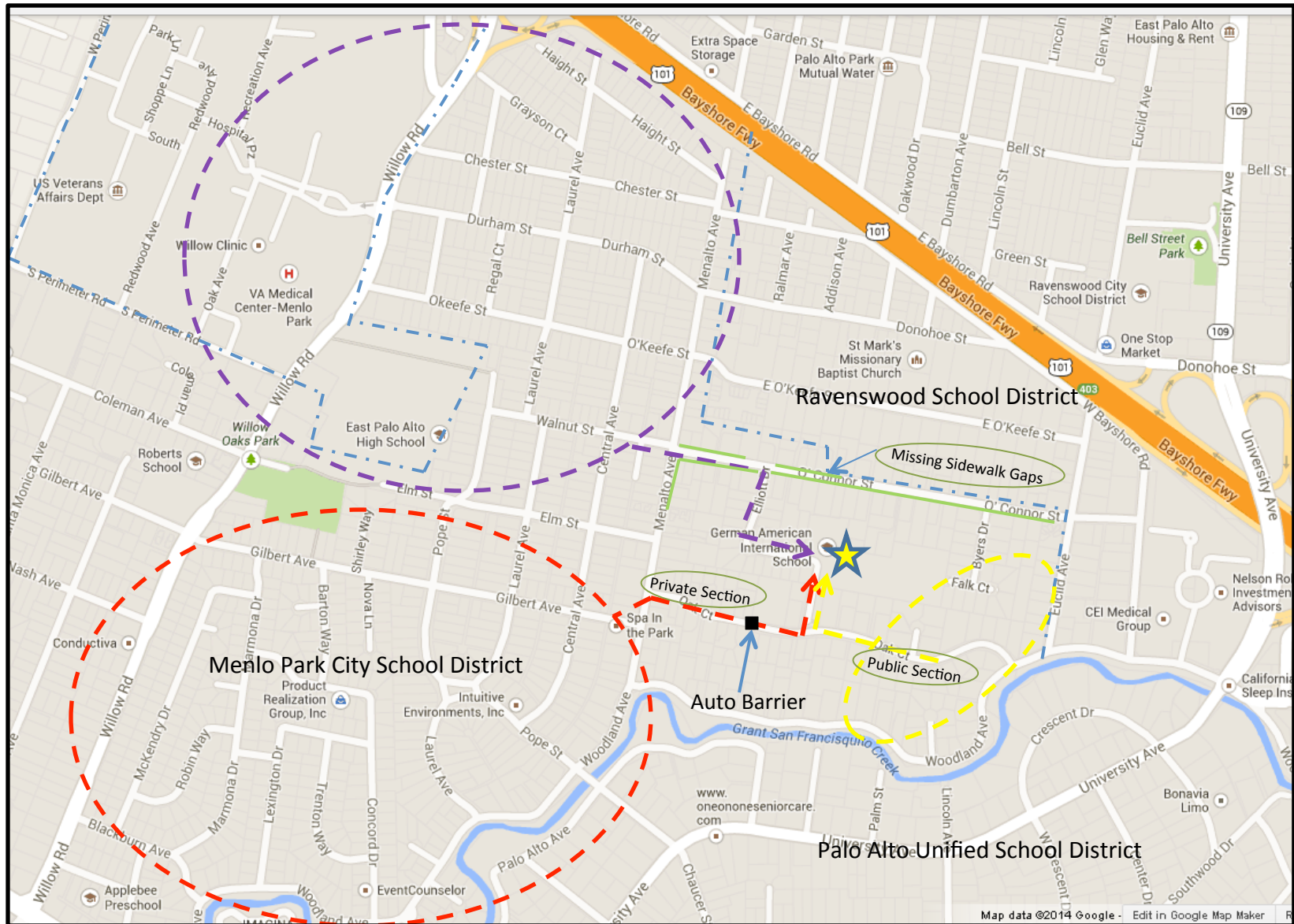
Second Floor Plan

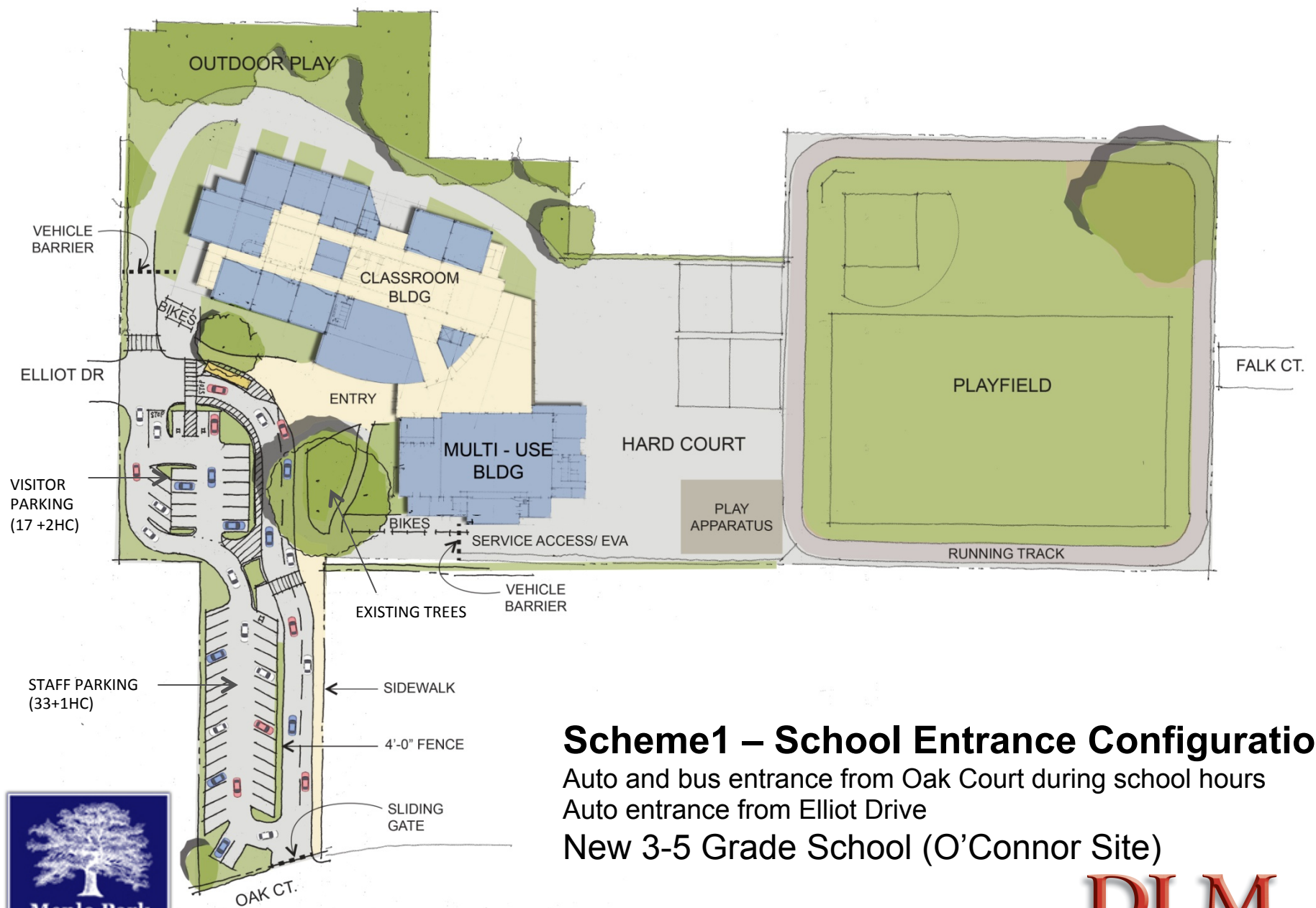
New 3-5 Grade School (O'Connor Site)



DLM
ARCHITECTURE

Potential Walking and Biking Paths to the New School





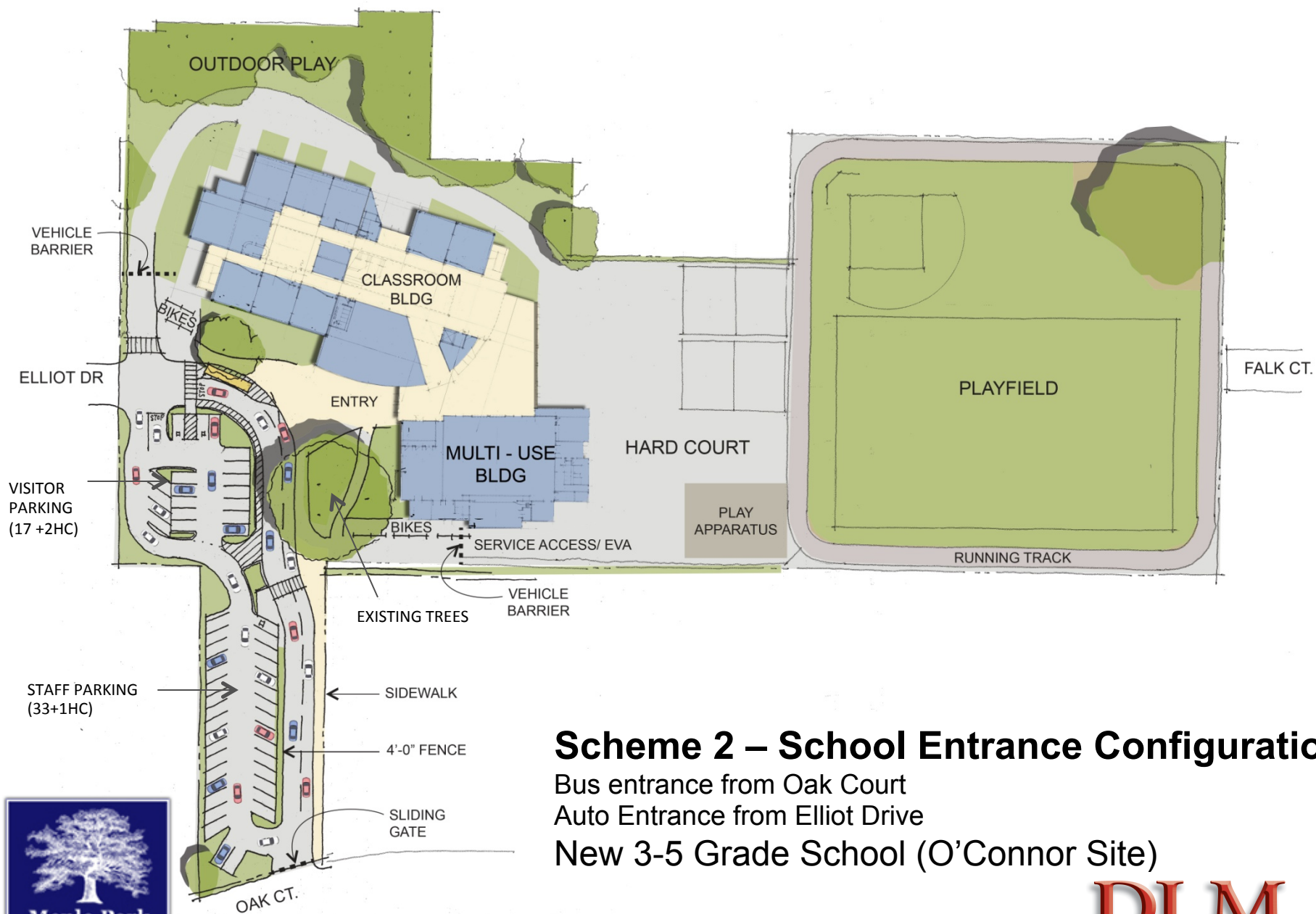
Scheme1 – School Entrance Configuration

Auto and bus entrance from Oak Court during school hours

Auto entrance from Elliot Drive

New 3-5 Grade School (O'Connor Site)





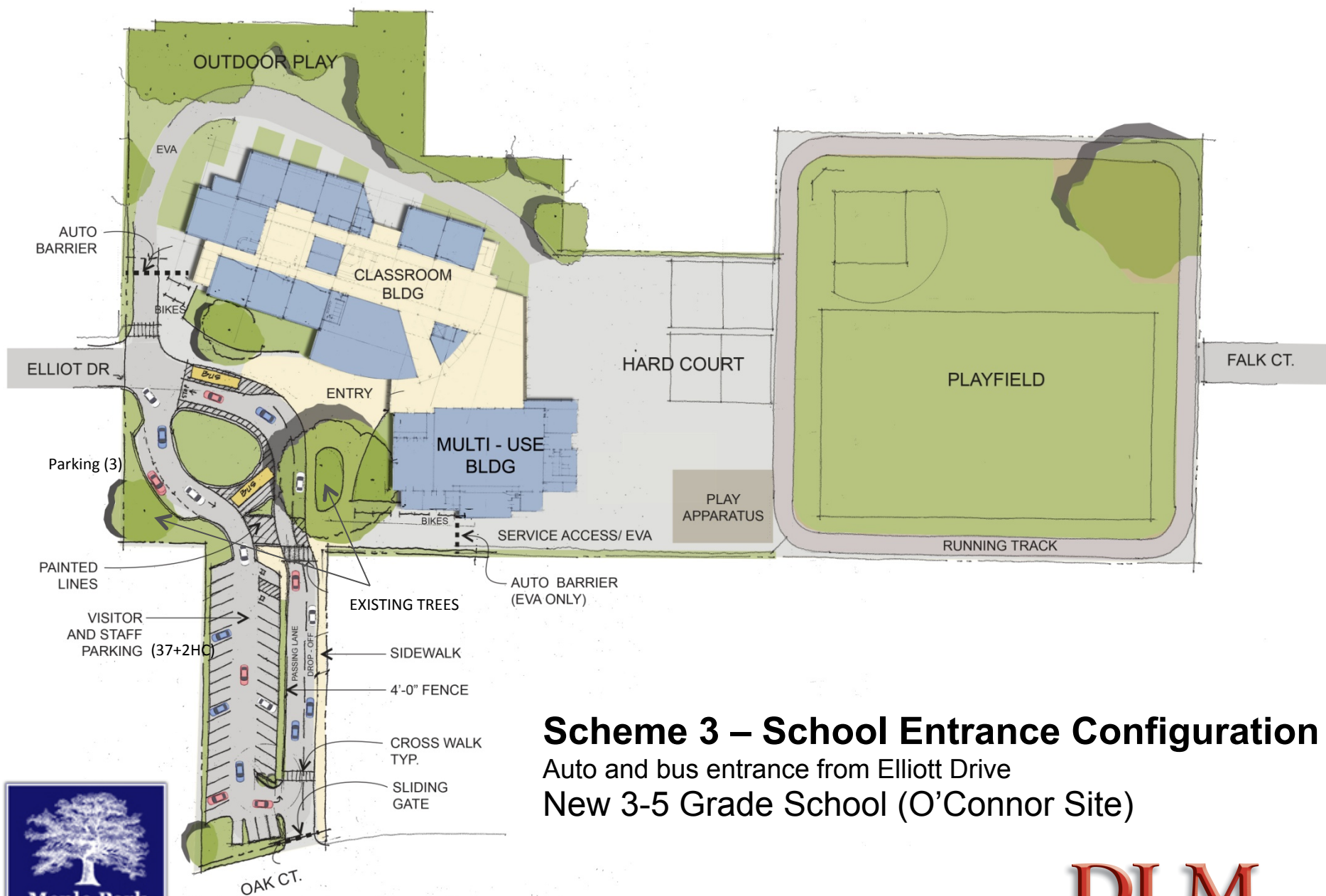
Scheme 2 – School Entrance Configuration

Bus entrance from Oak Court

Auto Entrance from Elliot Drive

New 3-5 Grade School (O'Connor Site)





Scheme 3 – School Entrance Configuration

Auto and bus entrance from Elliott Drive

New 3-5 Grade School (O'Connor Site)



Proposed New Grade 3-5 School Access Evaluation

Considerations	Option 1	Option 2	Option 3
California Code of Regulations Title 5*			
Item 1, Buses do not pass through parking areas	●	●	◐
Item 2, Parent drop off area is adjacent to school entrance and separate from bus area and parking	◐	◐	◐
Item 3, Vehicle traffic patterns do not interfere with foot traffic patterns	◐	◐	◐
Item 4, Parking stalls are located so vehicles need not back into bus or student loading area	●	●	●
Item 5, Provide equal access for handicapped students in the same location as for regular students	●	●	●
Emergency Vehicle Access			
Meets DSA Policy 07-03	YES	YES	YES
Secondary EVA access point	YES	YES	YES
Meets Local Fire Department Access	YES	YES	YES
Drop off and pick up design features			
Length of queue (# of cars)**	29	29	27
Length of student drop off area (# of cars)**	11	11	11
Points of bus interaction with autos	1	1	2
Understandable to drivers and pedestrians	YES	YES	YES
Service and Supply Vehicle Access	YES	YES	YES

* For complete text refer to California Code of Regulations, Title 5, Division 1, Chapter 13, Subchapter 1

** estimated length between cars is 22 feet

● best meets criteria; ◐ Least meets criteria

Proposed New Grade 3-5 School Access Evaluation

Considerations	Option 1	Option 2	Option 3
Parking (min 50 needed)			
Total regular parking spaces	50	50	40
Handicapped parking spaces	3	3	2
Non peak parking spaces	11	11	11
Separate the visitor and staff parking	YES	YES	NO
Safety of parking lot design	●	●	◐
Bus Access			
Level of interaction with Elliot traffic	Moderate	Moderate	High
Level of interaction with Oak Ct traffic	High	Low	None
Level of interaction in drop off/pick up area	Moderate	Moderate	High
Local Streets			
Create local street impacts per City guidelines	Potentially	NO	NO
Tree Removal			
Number of frontage trees removed (4 existing)	0	0	0
Number of parking lot trees removed (5 existing)	5	5	4

Next Steps

- Question and Answer
 - Public Comment
 - Deliberation and Action
-
- Design Team works on detailed design work
 - Preliminary submissions of plans to CDE
 - Complete Phase 1 or PEA Study
 - Prepare Initial Study Report for Environmental Review and file either Negative Declaration or EIR – both provide for public review and comment period
 - Submission of Plans to DSA by August 2014