

LEA Name : Spring-Ford Area SD
Address : 857 South Lewis Road
Royersford , PA 19468

County : Montgomery
AUN Number : 123467303
LEA Type : SD

Annual Financial Report
Accuracy Certification Statement

For Fiscal Year Ending
6/30/2022

Pennsylvania Department of Education
&
Office of Comptroller Operations

PDE-2056: Intermediate Unit
PDE-2057: School District, AVTS/CTC, Charter School,
and Special Program Jointure

CERTIFICATION: By signing this page I agree that the electronic data submitted is a complete and accurate statement of the financial operations and status of the local education agency for the fiscal year. It has been prepared in accordance with generally accepted accounting principles and established Commonwealth of PA reporting guidelines.


Chief School Administrator Signature

11/30/2022
Date


Board Secretary Signature

11/30/2022
Date

James Fink
Contact Person

jfink@spring-ford.net
Contact Person E-mail Address

(610)705-6000 Ext :
Contact Person Telephone Number

Contact Person Fax Number

Audit Certification
Annual Financial Report:
For Fiscal Year Ending **6/30/2022**
(Pursuant to PA School Code Section 218(b))

LEA Name : Spring-Ford Area SD
AUN Number : 123467303
County : Montgomery

Audit Certification Due: 12/31/2022

This certification is applicable to the Annual Financial Report data submitted through the Consolidated Financial Reporting System (CFRS).

CERTIFICATION: By signing this page I agree that the financial statements of the school have been properly audited as noted above pursuant to Article XXIV, and in the auditor's professional opinion, the Annual Financial Report (PDE-2057) submitted through CFRS is materially consistent with the audited financial statements.

Chief School Administrator

Board Secretary

Signature

Date

Signature

Date

James Fink

Contact Person

jfink@spring-ford.net

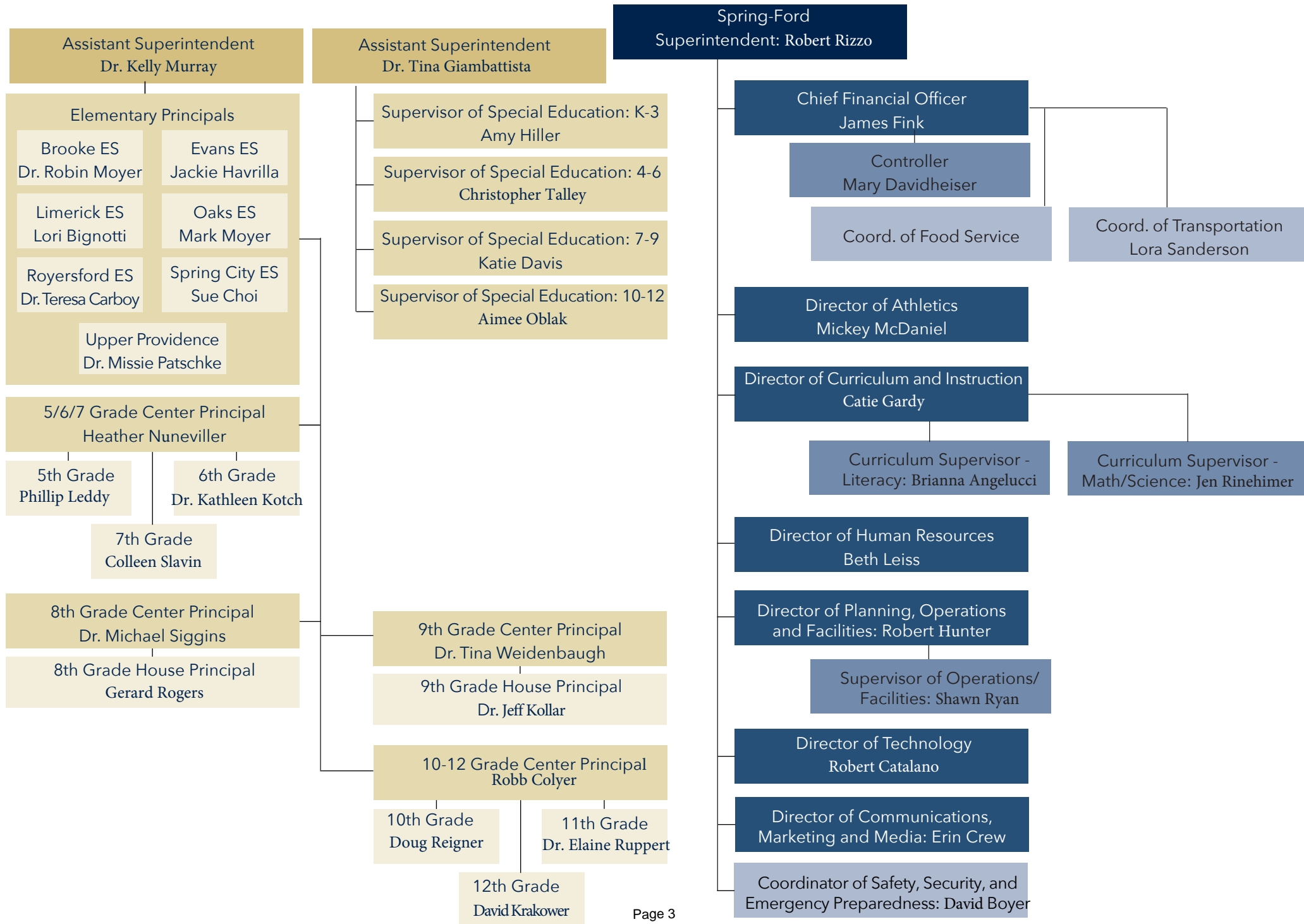
Contact Person E-mail Address

(610)705-6000

Ext :

Contact Person Telephone Number

Contact Person Fax Number



Book	Policy Manual
Section	600 Finances
Title	GASB Statement 34
Code	622
Status	Active
Adopted	September 23, 2002
Last Revised	August 23, 2021

Purpose

The Board recognizes the need to implement the required accounting and financial reporting standards stipulated by the Pennsylvania Department of Education.

The primary objectives of implementing the Governmental Accounting Standards Board (GASB) Statement 34 are to assure compliance with state requirements, and properly account for both the financial and economic resources of the district.

Authority

Participation of the school district in any such activity shall be in accordance with Board policy.[\[1\]](#)[\[2\]](#)

Delegation of Responsibility

The responsibility to coordinate the compilation and preparation of all information necessary to implement this policy is delegated to the Chief Financial Officer (CFO).

The designated individual shall be responsible for implementing the necessary procedures to establish and maintain a fixed asset inventory, including depreciation schedules. Depreciation shall be computed on a straight-line basis over the useful lives of the assets, using an averaging convention. Normal maintenance and repairs shall be charged to expense as incurred; major renewals and betterments that materially extend the life or increase the value of the asset shall be capitalized. A schedule of accumulated depreciation shall be consistent from year to year. The basis for depreciation, including groups of assets and useful lives, shall be in writing and submitted for review to the Finance Committee.

The CFO shall prepare the required Management Discussion and Analysis (MD&A). The MD&A shall be in the form required by GASB Statement 34 and shall be submitted to the Board for approval, prior to publication.

Prior to submission of the MD&A for Board approval, the district's independent auditors shall review the MD&A, in accordance with SAS No. 52, "Required Supplementary Information".

Legal	1. 24 P.S. 218
	2. 24 P.S. 613
	Governmental Accounting Standards Boards, Statement 34

Val Number	Description	Justification
10150	<p>NAG: Balance Sheet Govt Funds:Data has been entered for Fund 32, Line 0400 - Due to Other Funds. Since transfers out of Fund 32 are not allowed, this line should only be utilized when recording transactions related to interfund reimbursements. Please make corrections or provide brief details of the interfund reimbursement.</p> <p>NAG Fund 32, Line 0400: \$369,300.00</p>	SHI INVOICE B13702906 - CK# 212200253 PAID FROM GENERAL FUND - INTERFUND RECEIVABLE
30501	<p>Revenue Detail: AFR amount must equal PDE FAI system amount.</p> <p>7311, AFR Rev Detail: \$1,538,983.67 7311, PDE FAI System: \$1,533,483.67</p>	THE FAI SYSTEM SHOWS ONLY CASH RECEIPTS FOR 21/22, WHILE THE AMOUNTS ENTERED IN THE AFR REFLECT THE REVENUE RECOGNIZED (EARNED) IN 21/22. AFR AMOUNTS INCLUDE THOSE RECEIVED FOR YEARS 20/21 (THAT WERE NOT PREVIOUSLY RECOGNIZED IN REVENUE) AND 21/22
30685	<p>Revenue Detail: Current Tax Revenue amount cannot exceed 50% variance from prior year amount. Correct the data or enter a justification.</p> <p>6153, Current AFR Rev Detail: \$4,920,260.90 6153, Prior AFR Rev Detail: \$2,168,897.85</p>	During the 2021/22 year there were several large real estate sales including a major shopping center for over \$160 million. Also there was significant backlog of transfer recordings from 2020-2021 that were recorded by Montgomery county in 2021/22.
41005	<p>Expenditures have been reported in Function 1700 – Higher Education Programs for Secondary Students. Please confirm that these costs were for services provided to your school's secondary students. NOTE: Adult education programs and Community College sponsorship should be coded to Function 1600.</p> <p>Exp detail, Fund 10, Function 1700 total \$16,750.00</p>	SERVICES WERE PROVIDED TO SECONDARY STUDENTS - GATEWAY TO COLLEGE PROGRAM THROUGH MONTGOMERY COUNTY COMMUNITY COLLEGE FOR STUDENTS IN DANGER OF NOT GRADUATING DUE TO LEARNING LOSS RELATED TO THE PANDEMIC
42420	<p>Expenditure Detail: Total current year 2700-513 expenditure varies from prior year by 10%. Correct the data or enter a justification.</p> <p>2700-513, AFR Exp Detail: \$8,998,346.08 2700-513, PY AFR Amount: \$6,611,188.35</p>	TRANSPORTATION EXPENSE VARIANCE DUE TO STUDENT POPULATION GROWTH, FUEL PRICE INCREASE, IN PERSON INSTRUCTION AND ESY PROGRAMS REINSTATED AFTER DISTRICT CLOSURE, INCREASE IN HOMELESS TRANSPORTATION SERVICES AND SPECIAL EDUCATION SERVICES.
50074	<p>SOIN: Interest paid during the fiscal reported on the SOIN for General Obligation Bonds, Authority Building Obligations, Leases, Extended Term Financing, and/or Other Long Term Debt is not comparable with amounts reported in Governmental Fund Expenditure Function 5000, Object 830. Please correct or provide a justification.</p> <p>SOIN: Interest Paid During Fiscal Year: \$2,331,483.06 Expenditure Detail: Function 5000, Object 830: \$2,014,340.73</p>	Debt service payments relating to the Career & Technology Center which are shared with two other districts. Our auditors recommended these payments (\$1,056,385.64 principle and \$317,142.06 interest) be coded to 1390-564.

50400	<div>SESS - 2120 Guidance Services: SESS Schedule amounts for Special Education vary from prior year by 40% or more. Correct the data or enter a justification.</div> <div>SESS Schedule 2120: \$721,489.19 Prior Year SESS Schedule 2120: \$437,534.43</div>	Increase in guidance support hours to keep up with student needs from the pandemic
50420	<div>SESS - 2150 Speech Pathology and Audiology Services: SESS Schedule amounts for Special Education vary from prior year by 40% or more. Correct the data or enter a justification.</div> <div>SESS Schedule 2150: \$167,943.85 Prior Year SESS Schedule 2150: \$115,164.36</div>	Increase in Special Education speech services at the secondary level
50430	<div>SESS - 2160 Social Work Services: SESS Schedule amounts for Special Education vary from prior year by 40% or more. Correct the data or enter a justification.</div> <div>SESS Schedule 2160: \$38,482.86 Prior Year SESS Schedule 2160: \$0.00</div>	Increase in Social Worker services needed to address pandemic issues for Regular and Special Education Students
50470	<div>SESS - 2440 Nursing Services: SESS Schedule amounts for Special Education vary from prior year by 40% or more. Correct the data or enter a justification.</div> <div>SESS Schedule 2440: \$201,147.09 Prior Year SESS Schedule 2440: \$88,581.88</div>	Increase in special education contracted nursing services including ESY
50480	<div>SESS - 2700 Student Transportation Services: SESS Schedule amounts for Special Education vary from prior year by 40% or more. Correct the data or enter a justification.</div> <div>SESS Schedule 2700: \$3,309,866.71 Prior Year SESS Schedule 2700: \$1,995,029.33</div>	Increase in Special Education transportation services, In person ESY reinstated.

LEA : 123467303 Spring-Ford Area SD

Printed 11/30/2022 4:21:08 PM

Amounts Expressed in Whole Dollars		<u>General Fund</u> <u>(10)</u>	<u>Student Sponsored</u> <u>Activity Fund</u> <u>(21)</u>	<u>Public Purpose Trust</u> <u>(27)</u>	<u>Other Compt Approved</u> <u>(28)</u>	<u>Athletic / Activity</u> <u>(29)</u>
Assets And Deferred Outflows Of Resources						
Assets						
0100	Cash and Cash Equivalents	36,621,719				
0110	Investments	6,184,807				
0120	Taxes Receivable	1,452,275				
0130	Due From Other Funds	2,030,097				
0141	Due From Other Governments	915				
0142	State Revenue Receivable	6,388,970				
0143	Federal Revenue Receivable	3,229,811				
0145	Other Intergovernmental Revenue Receivable					
0146	Due from Primary Government					
0147	Due from Component Unit					
0150	Other Receivables	107,684				
0170	Inventories					
0180	Prepaid Expenses (Expenditures)	590,981				
0190	Other Current Assets					
Total Assets		\$56,607,259				
0910	Deferred Outflows of Resources					
Total Assets And Deferred Outflows Of Resources		\$56,607,259				

LEA : 123467303 Spring-Ford Area SD

Printed 11/30/2022 4:21:08 PM

Amounts Expressed in Whole Dollars		<u>Capital Reserve (690.</u> <u>1850)</u> <u>(31)</u>	<u>Capital Reserve (1431)</u> <u>(32)</u>	<u>Other Capital Projects</u> <u>Fund</u> <u>(39)</u>	<u>Debt Service</u> <u>(40)</u>	<u>Permanent</u> <u>(90)</u>
Assets And Deferred Outflows Of Resources						
Assets						
0100	Cash and Cash Equivalents		9,228,952		3,246,653	
0110	Investments		1,194,878			
0120	Taxes Receivable					
0130	Due From Other Funds		2			
0141	Due From Other Governments					
0142	State Revenue Receivable					
0143	Federal Revenue Receivable					
0145	Other Intergovernmental Revenue Receivable					
0146	Due from Primary Government					
0147	Due from Component Unit					
0150	Other Receivables					
0170	Inventories					
0180	Prepaid Expenses (Expenditures)					
0190	Other Current Assets					
Total Assets			\$10,423,832		\$3,246,653	
0910	Deferred Outflows of Resources					
Total Assets And Deferred Outflows Of Resources			\$10,423,832		\$3,246,653	

LEA : 123467303 Spring-Ford Area SD

Printed 11/30/2022 4:21:08 PM

Amounts Expressed in Whole Dollars		<u>Total Governmental</u>
		<u>Funds</u>
Assets And Deferred Outflows Of Resources		
Assets		
0100 Cash and Cash Equivalents	49,097,324	
0110 Investments	7,379,685	
0120 Taxes Receivable	1,452,275	
0130 Due From Other Funds	2,030,099	
0141 Due From Other Governments	915	
0142 State Revenue Receivable	6,388,970	
0143 Federal Revenue Receivable	3,229,811	
0145 Other Intergovernmental Revenue Receivable		
0146 Due from Primary Government		
0147 Due from Component Unit		
0150 Other Receivables	107,684	
0170 Inventories		
0180 Prepaid Expenses (Expenditures)	590,981	
0190 Other Current Assets		
Total Assets	\$70,277,744	
0910 Deferred Outflows of Resources		
Total Assets And Deferred Outflows Of Resources	\$70,277,744	

LEA : 123467303 Spring-Ford Area SD

Printed 11/30/2022 4:21:08 PM

Amounts Expressed in Whole Dollars	<u>General Fund</u> <u>(10)</u>	<u>Student Sponsored</u> <u>Activity Fund</u> <u>(21)</u>	<u>Public Purpose Trust</u> <u>(27)</u>	<u>Other Compt Approved</u> <u>(28)</u>	<u>Athletic / Activity</u> <u>(29)</u>
Liabilities And Deferred Inflows Of Resources And Fund Balances					
Liabilities					
0400 Due to Other Funds	3,711,925				
0411 Due to Other Governments					
0412 Due to Primary Government					
0413 Due to Component Unit					
0420 Accounts Payable	4,596,923				
0430 Contracts Payable					
0440 Current Portion of Long-Term Debt	1,013,824				
0450 Short-Term Payables					
0461 Accrued Salaries and Benefits	21,153,442				
0462 Payroll Deductions and Withholding					
0480 Unearned Revenues	1,078,889				
0490 Other Current Liabilities	1,669,529				
Total Liabilities	\$33,224,532				
0950 Deferred Inflows of Resources					
Fund Balances					
0810 Nonspendable Fund Balance	734,034				
0820 Restricted Fund Balance	2,064,100				
0830 Committed Fund Balance	2,211,152				
0840 Assigned Fund Balance	6,960,485				
0850 Unassigned Fund Balance	11,412,956				
Total Fund Balances	\$23,382,727				
Total Liabilities, Deferred Inflows Of Resources And Fund Balances	\$56,607,259				

LEA : 123467303 Spring-Ford Area SD

Printed 11/30/2022 4:21:08 PM

Amounts Expressed in Whole Dollars		<u>Capital Reserve (690.</u> <u>1850)</u> <u>(31)</u>	<u>Capital Reserve (1431)</u> <u>(32)</u>	<u>Other Capital Projects</u> <u>Fund</u> <u>(39)</u>	<u>Debt Service</u> <u>(40)</u>	<u>Permanent</u> <u>(90)</u>
Liabilities And Deferred Inflows Of Resources And Fund Balances						
Liabilities						
0400	Due to Other Funds		369,300		1,512,000	
0411	Due to Other Governments					
0412	Due to Primary Government					
0413	Due to Component Unit					
0420	Accounts Payable		537,557			
0430	Contracts Payable					
0440	Current Portion of Long-Term Debt					
0450	Short-Term Payables					
0461	Accrued Salaries and Benefits					
0462	Payroll Deductions and Withholding					
0480	Unearned Revenues					
0490	Other Current Liabilities					
Total Liabilities			\$906,857		\$1,512,000	
0950	Deferred Inflows of Resources					
Fund Balances						
0810	Nonspendable Fund Balance					
0820	Restricted Fund Balance					
0830	Committed Fund Balance					
0840	Assigned Fund Balance		9,516,975		1,734,653	
0850	Unassigned Fund Balance					
Total Fund Balances			\$9,516,975		\$1,734,653	
Total Liabilities, Deferred Inflows Of Resources And Fund Balances			\$10,423,832		\$3,246,653	

LEA : 123467303 Spring-Ford Area SD

Printed 11/30/2022 4:21:08 PM

Amounts Expressed in Whole Dollars		<u>Total Governmental Funds</u>
Liabilities And Deferred Inflows Of Resources And Fund Balances		
Liabilities		
0400 Due to Other Funds		5,593,225
0411 Due to Other Governments		
0412 Due to Primary Government		
0413 Due to Component Unit		
0420 Accounts Payable		5,134,480
0430 Contracts Payable		
0440 Current Portion of Long-Term Debt		1,013,824
0450 Short-Term Payables		
0461 Accrued Salaries and Benefits		21,153,442
0462 Payroll Deductions and Withholding		
0480 Unearned Revenues		1,078,889
0490 Other Current Liabilities		1,669,529
Total Liabilities		\$35,643,389
0950 Deferred Inflows of Resources		
Fund Balances		
0810 Nonspendable Fund Balance		734,034
0820 Restricted Fund Balance		2,064,100
0830 Committed Fund Balance		2,211,152
0840 Assigned Fund Balance		18,212,113
0850 Unassigned Fund Balance		11,412,956
Total Fund Balances		\$34,634,355
Total Liabilities, Deferred Inflows Of Resources And Fund Balances		\$70,277,744

Amounts Expressed in Whole Dollars	<u>General Fund</u> <u>(10)</u>	<u>Student Sponsored</u> <u>Activity Fund</u> <u>(21)</u>	<u>Public Purpose Trust</u> <u>(27)</u>	<u>Other Compt Approved</u> <u>(28)</u>	<u>Athletic / Activity</u> <u>(29)</u>
Revenues					
6000 Revenue from Local Sources	138,919,531				
7000 Revenue from State Sources	35,196,526				
8000 Revenue from Federal Sources	4,690,301				
Total Revenues	\$178,806,358				
Expenditures					
1000 Instruction	108,413,960				
2000 Support Services	54,182,406				
3000 Operation of Non-Instructional Services	2,962,410				
4000 Facilities Acquisition, Construction and Improvement Services	291,269				
5110 Debt Service	13,148,341				
5130 Refund of Prior Year Revenues / Receipts	37,592				
5140 Leases					
Total Expenditures	\$179,035,978				
Excess (Deficiency) Of Revenues Over Expenditures	(\$229,620)				
Other Financing Sources (Uses)					
9110 Face Value of Bonds Issued					
9120 Proceeds from Refunding of Bonds					
9130 Bond Premiums					
9200 Proceeds from Extended-Term Financing and Leases					
9300 Interfund Transfers - IN	2,462,115				
9400 Sale of or Compensation for Loss of Fixed Assets					
9710 Transfers from Component Units					
9720 Transfers from Primary Governments					
9910 Other Financing Sources Not Listed in the 9000 Series					
9990 Insurance Recoveries	1,073				
5120 Debt Service – Refunded Bonds					
5150 Bond Discounts					
5200 Interfund Transfers – Out	4,481,850				
5300 Transfers Out to Component Units/Primary Governments					
Total Other Financing Sources (Uses)	(\$2,018,662)				

Amounts Expressed in Whole Dollars		<u>Capital Reserve (690.1850)</u> <u>(31)</u>	<u>Capital Reserve (1431)</u> <u>(32)</u>	<u>Other Capital Projects</u> <u>Fund</u> <u>(39)</u>	<u>Debt Service</u> <u>(40)</u>	<u>Permanent</u> <u>(90)</u>
Revenues						
6000	Revenue from Local Sources		2,028		10,169	
7000	Revenue from State Sources					
8000	Revenue from Federal Sources					
Total Revenues			\$2,028		\$10,169	
Expenditures						
1000	Instruction					
2000	Support Services		2,054,681			
3000	Operation of Non-Instructional Services					
4000	Facilities Acquisition, Construction and Improvement Services		2,156,244			
5110	Debt Service					
5130	Refund of Prior Year Revenues / Receipts					
5140	Leases					
Total Expenditures			\$4,210,925			
Excess (Deficiency) Of Revenues Over Expenditures			(\$4,208,897)		\$10,169	
Other Financing Sources (Uses)						
9110	Face Value of Bonds Issued					
9120	Proceeds from Refunding of Bonds					
9130	Bond Premiums					
9200	Proceeds from Extended-Term Financing and Leases					
9300	Interfund Transfers - IN		4,481,850			
9400	Sale of or Compensation for Loss of Fixed Assets					
9710	Transfers from Component Units					
9720	Transfers from Primary Governments					
9910	Other Financing Sources Not Listed in the 9000 Series					
9990	Insurance Recoveries					
5120	Debt Service – Refunded Bonds					
5150	Bond Discounts					
5200	Interfund Transfers – Out			115	1,512,000	
5300	Transfers Out to Component Units/Primary Governments					
Total Other Financing Sources (Uses)			\$4,481,850	(\$115)	(\$1,512,000)	

Amounts Expressed in Whole Dollars		<u>Total Governmental Funds</u>
Revenues		
6000	Revenue from Local Sources	138,931,728
7000	Revenue from State Sources	35,196,526
8000	Revenue from Federal Sources	4,690,301
Total Revenues		\$178,818,555
Expenditures		
1000	Instruction	108,413,960
2000	Support Services	56,237,087
3000	Operation of Non-Instructional Services	2,962,410
4000	Facilities Acquisition, Construction and Improvement Services	2,447,513
5110	Debt Service	13,148,341
5130	Refund of Prior Year Revenues / Receipts	37,592
5140	Leases	
Total Expenditures		\$183,246,903
Excess (Deficiency) Of Revenues Over Expenditures		(\$4,428,348)
Other Financing Sources (Uses)		
9110	Face Value of Bonds Issued	
9120	Proceeds from Refunding of Bonds	
9130	Bond Premiums	
9200	Proceeds from Extended-Term Financing and Leases	
9300	Interfund Transfers - IN	6,943,965
9400	Sale of or Compensation for Loss of Fixed Assets	
9710	Transfers from Component Units	
9720	Transfers from Primary Governments	
9910	Other Financing Sources Not Listed in the 9000 Series	
9990	Insurance Recoveries	1,073
5120	Debt Service – Refunded Bonds	
5150	Bond Discounts	
5200	Interfund Transfers – Out	5,993,965
5300	Transfers Out to Component Units/Primary Governments	
Total Other Financing Sources (Uses)		\$951,073

Amounts Expressed in Whole Dollars		<u>General Fund</u> <u>(10)</u>	<u>Student Sponsored</u> <u>Activity Fund</u> <u>(21)</u>	<u>Public Purpose Trust</u> <u>(27)</u>	<u>Other Compt Approved</u> <u>(28)</u>	<u>Athletic / Activity</u> <u>(29)</u>
Special And Extraordinary Items						
9920	Special Items – Gains					
9930	Extraordinary Items – Gains					
5520	Special Items – Losses					
5530	Extraordinary Items – Losses					
Net Change In Fund Balances		(\$2,248,282)				
Fund Balance						
0001	Fund Balance - Beginning of Fiscal Year	25,631,009				
Fund Balance - End Of Year		\$23,382,727				

Amounts Expressed in Whole Dollars		<u>Capital Reserve (690.</u> <u>1850)</u> <u>(31)</u>	<u>Capital Reserve (1431)</u> <u>(32)</u>	<u>Other Capital Projects</u> <u>Fund</u> <u>(39)</u>	<u>Debt Service</u> <u>(40)</u>	<u>Permanent</u> <u>(90)</u>
Special And Extraordinary Items						
9920	Special Items – Gains					
9930	Extraordinary Items – Gains					
5520	Special Items – Losses					
5530	Extraordinary Items – Losses					
Net Change In Fund Balances			\$272,953	(\$115)	(\$1,501,831)	
Fund Balance						
0001	Fund Balance - Beginning of Fiscal Year		9,244,022	115	3,236,484	
Fund Balance - End Of Year			\$9,516,975		\$1,734,653	

Amounts Expressed in Whole Dollars		<u>Total Governmental Funds</u>
Special And Extraordinary Items		
9920	Special Items – Gains	
9930	Extraordinary Items – Gains	
5520	Special Items – Losses	
5530	Extraordinary Items – Losses	
Net Change In Fund Balances		(\$3,477,275)
Fund Balance		
0001	Fund Balance - Beginning of Fiscal Year	38,111,630
Fund Balance - End Of Year		\$34,634,355

LEA : 123467303 Spring-Ford Area SD

Printed 11/30/2022 4:21:42 PM

Amounts Expressed in Whole Dollars	<u>Food Service</u> <u>(51)</u>	<u>Child Care</u> <u>Operations</u> <u>(52)</u>	<u>Other Enterprise</u> <u>(58)</u>	<u>TOTAL</u>	<u>Internal Service</u> <u>(60)</u>
Assets And Deferred Outflows Of Resources					
Current Assets					
0100 Cash and Cash Equivalents	1,606,723			1,606,723	
0110 Investments					
0130 Due From Other Funds	31,406			31,406	3,680,517
0141 Due From Other Governments					
0142 State Revenue Receivable	39,796			39,796	
0143 Federal Revenue Receivable	151,703			151,703	
0146 Due from Primary Government					
0147 Due from Component Unit					
0150 Other Receivables	2,773			2,773	
0170 Inventories	46,531			46,531	
0180 Prepaid Expenses (Expenditures)					
0190 Other Current Assets					
Total Current Assets	\$1,878,932			\$1,878,932	\$3,680,517
Noncurrent Assets					
0211 Land					
0212 Site Improvements (Net)					
0220 Buildings and Building Improvements (Net)					
0230 Machinery, Equipment and Furniture (Net)	311,921			311,921	
0250 Construction in Progress					
0260 Long Term Prepayments					
0290 Other Noncurrent Assets					
Total Noncurrent Assets	\$311,921			\$311,921	
0910 Deferred Outflows of Resources	921,000			921,000	
Total Assets And Deferred Outflows Of Resources	\$3,111,853			\$3,111,853	\$3,680,517

Amounts Expressed in Whole Dollars	<u>Food Service</u> <u>(51)</u>	<u>Child Care</u> <u>Operations</u> <u>(52)</u>	<u>Other Enterprise</u> <u>(58)</u>	<u>TOTAL</u>	<u>Internal Service</u> <u>(60)</u>
Liabilities And Deferred Inflows Of Resources And Net Position					
Current Liabilities					
0400 Due to Other Funds	148,797			148,797	
0411 Due to Other Governments					
0413 Due to Component Unit					
0420 Accounts Payable	121,275			121,275	
0430 Contracts Payable					
0440 Current Portion of Long-Term Debt					
0450 Short-Term Payables					
0461 Accrued Salaries and Benefits	92,568			92,568	
0462 Payroll Deductions and Withholding					
0480 Unearned Revenues	162,685			162,685	
0490 Other Current Liabilities					
Total Current Liabilities	\$525,325			\$525,325	
Noncurrent Liabilities					
0510 Bonds Payable					
0520 Extended-Term Financing Agreements Payable					
0530 Lease Obligations					
0540 Accumulated Compensated Absences	49,699			49,699	
0550 Authority Lease Obligations					
0560 Other Post-Employment Benefits (OPEB)					
0570 Net Pension Liability					
0599 Other Noncurrent Liabilities	4,074,000			4,074,000	
Total Noncurrent Liabilities	\$4,123,699			\$4,123,699	
Total Liabilities	\$4,649,024			\$4,649,024	
0950 Deferred Inflows of Resources	677,270			677,270	
Net Position					
0791 Net Investment in Capital Assets					
0008 Restricted Net Position (0792 – 0798)	(3,110,000)			(3,110,000)	
0799 Unrestricted Net Position	895,559			895,559	3,680,517
Total Net Position	(\$2,214,441)			(\$2,214,441)	\$3,680,517
Total Liabilities And Deferred Inflows Of Resources And Net Position	\$3,111,853			\$3,111,853	\$3,680,517

Amounts Expressed in Whole Dollars		<u>Food Service</u> <u>(51)</u>	<u>Child Care Operations</u> <u>(52)</u>	<u>Other Enterprise</u> <u>(58)</u>	<u>TOTAL</u>	<u>Internal Service</u> <u>(60)</u>
Operating Revenues						
6600	Food Service Revenue	668,666			668,666	
0071	Charges for Services					
0072	Other Operating Revenue					
Total Operating Revenues		\$668,666			\$668,666	
Operating Expenses						
100	Personnel Services – Salaries	885,283			885,283	
200	Personnel Services – Employee Benefits	694,403			694,403	
300	Purchased Professional and Technical Services					
400	Purchased Property Services	17,357			17,357	
500	Other Purchased Services	1,583,584			1,583,584	
600	Supplies	272,093			272,093	
740	Depreciation	7,989			7,989	
810	Dues and Fees	1,742			1,742	
880	Refunds of Prior Years' Receipts					
890	Miscellaneous Expenditures					
Total Operating Expenses		\$3,462,451			\$3,462,451	
Operating Income (Loss)		(\$2,793,785)			(\$2,793,785)	
Non Operating Revenues (Expenses)						
6500	Earnings on Investments	2,477			2,477	
6920	Contributions and Donations from Private Sources					
6930	Gains or Losses on Sale of Fixed Assets					
6991	Refunds of a Prior Year Expenditure					
7000	Revenue from State Sources	291,204			291,204	
8000	Revenue from Federal Sources	3,972,894			3,972,894	
9990	Insurance Recoveries					
820	Claims and Judgments Against the LEA					
830	Interest					
TOTAL Non Operating Revenues (Expenses)		\$4,266,575			\$4,266,575	
Income (Loss) Before Contributions And Transfers		\$1,472,790			\$1,472,790	

Amounts Expressed in Whole Dollars	<u>Food Service</u> <u>(51)</u>	<u>Child Care Operations</u> <u>(52)</u>	<u>Other Enterprise</u> <u>(58)</u>	<u>TOTAL</u>	<u>Internal Service</u> <u>(60)</u>
Contributions, Transfers, and Special and Extraordinary Items					
5200 Interfund Transfers – Out					950,000
5300 Transfers Out to Component Units/Primary Governments					
5520 Special Items – Losses					
5530 Extraordinary Items – Losses					
9300 Interfund Transfers - IN					
9500 Capital Contributions					
9700 Transfers IN From Component Units/Primary Governments					
9920 Special Items – Gains					
9930 Extraordinary Items – Gains					
Change In Net Position	\$1,472,790			\$1,472,790	(\$950,000)
0002 Net Position - Beginning of Fiscal Year	(3,687,226)			(3,687,226)	4,630,517
0003 Accounting Changes / Residual Equity Transfers					
Net Position - End Of Year	(\$2,214,436)			(\$2,214,436)	\$3,680,517

LEA : 123467303 Spring-Ford Area SD

Printed 11/30/2022 4:22:09 PM

Amounts Expressed in Whole Dollars		<u>Food Service</u> <u>(51)</u>	<u>Child Care Operations</u> <u>(52)</u>	<u>Other Enterprise</u> <u>(58)</u>	<u>TOTAL</u>	<u>Internal Service(60)</u>
Cash Flows From Operating Activities						
0011	Cash Receipts From Users	654,968			654,968	
0012	Cash Receipts From Assessments Made to Other Funds					
0013	Cash Receipts From Earnings on Investments					
0014	Cash Receipts From Other Operating Revenue					
0015	Cash Payments To Employees For Services	1,561,055			1,561,055	
0016	Cash Payments For Insurance Claims					
0017	Cash Payments To Suppliers For Goods and Services	65,498			65,498	
0018	Cash Payments For Other Operating Expenses	1,617,785			1,617,785	
Net Cash Provided By (Used For) Operating Activities		(\$2,589,370)			(\$2,589,370)	
Cash Flows From Non-Capital Financing Activities						
0021	Receipts From Local Sources - 6000					
0022	Receipts From State Sources - 7000	291,329			291,329	
0023	Receipts From Federal Sources -8000	3,752,019			3,752,019	
0024	Notes and Loans Received (Repaid)					
0025	Interest Paid on Notes/Loans - 5100-830					
0026	Operating Transfers In (Out)/Residual Equity Trans					
0027	Operating Transfers In (Out) Primary Government / Comp Unit	(357,121)			(357,121)	
0028	Receipts From Refund of Prior Year Expenditures - 6991					
0029	Special and Extraordinary Gains (losses)					
0030	Receipts from Insurance Recoveries -9990					
Net Cash Prov By (Used for) Non-Capital Financing Activities		\$3,686,227			\$3,686,227	
Cash Flows From Capital and Related Financing Activities						
0031	Payments For Fac Acq, Const, and Imp - 4000					
0032	Gain / (Loss) on Sale of Fixed Assets - 6930					
0033	Proceeds From Extended Term Financing - 9200					
0034	Principal Paid on Financing Agreements					
0035	Interest Paid on Financing Agreements - 5100-830					
0036	(Inc) Dec in Contributed Capital					
Net Cash Prov By (Used for) Capital and Related Financing Activities						
Cash Flows From Investing Activities						
0041	Earnings on Investments - 6500	2,477			2,477	
0042	Purchase of Inv Securities / Deposits to Inv Pools					
0043	Receipts From Investment Pool Withdrawals					
0044	Proceeds from Sale and Maturity of Inv Securities					

LEA : 123467303 Spring-Ford Area SD

Printed 11/30/2022 4:22:09 PM

0045 Loans Received (Paid)

Net Cash Prov By (Used for) Investing Activities	\$2,477	\$2,477
--	---------	---------

LEA : 123467303 Spring-Ford Area SD

Printed 11/30/2022 4:22:09 PM

	<u>Food Service</u> <u>(51)</u>	<u>Child Care Operations</u> <u>(52)</u>	<u>Other Enterprise</u> <u>(58)</u>	<u>TOTAL</u>	<u>Internal Service</u> <u>(60)</u>
Net Increase (Decrease) in Cash Flows	1,099,334			1,099,334	
0004 Cash and Cash Equivalents Beginning of Year	491,475			491,475	
Cash and Cash Equivalents at Year End	\$1,590,809			\$1,590,809	
<hr/>					
Reconciliation of Operating Income (Loss) To Net Cash Provided by (Used For) Operating Activities					
0005 Operating Income (Loss) per REP	(2,793,785)			(2,793,785)	
Adjustments					
0051 Depreciation and Net Amortization	7,989			7,989	
0052 Provision for Uncollectible Accounts					
0053 Other Adjustments	239,524			239,524	
Effect of Changes in Assets, Liabilities, Deferred Outflows and Deferred Inflows					
0054 (Inc) Dec In Accounts Receivable (0120-0150)	2,488			2,488	
0055 Advances to Other Funds (0160)					
0056 (Inc) Dec in Inventories (0170)	(31,187)			(31,187)	
0057 (Inc) Dec in Prepaid Expenses (0180)					
0058 (Inc) Dec in Other Current or Noncurrent Assets					
0064 Deferred Outflows (0910)					
0059 Inc (Dec) in Accounts Payable (0400-0450)	(16,844)			(16,844)	
0060 Inc (Dec) in Accrued Salaries/Benefits (0461)					
0065 Inc (Dec) in Net Pension Liabilities (0570)					
0066 Inc (Dec) in Other Postemp Benefit Oblig (0560)					
0061 Inc (Dec) in Payroll Deductions/Withholding (0462)	8,670			8,670	
0062 Inc (Dec) in Unearned Revenue (0480)	(16,186)			(16,186)	
0063 Inc (Dec) in Other Current or Noncurrent Liabilities	9,961			9,961	
0067 Deferred Inflows (0950)					
Total Adjustments	\$204,415			\$204,415	
Cash Provided By (Used for) Total	(\$2,589,370)			(\$2,589,370)	

COMBINED STATEMENT OF CASH FLOWS
SCHEDULE OF NONCASH INVESTING, CAPITAL, AND FINANCING ACTIVITIES

Explanation of Transaction and Balance Sheet Effect	Amount
Total	

	Revenue Reported In Current Year	Current Year Tax Accrual	Prior Year Tax Accrual	Taxes Collected In Current Year
Revenue from Local Sources				
6111 Current Real Estate Taxes	112,897,737.30			112,897,737.30
6112 Interim Real Estate Taxes	1,240,570.83			1,240,570.83
6113 Public Utility Realty Taxes	121,016.97			121,016.97
6114 Payments in Lieu of Current Taxes - State / Local	1,776,669.78			1,776,669.78
6143 Current Act 511 Local Services Taxes	170,245.94			170,245.94
6151 Current Act 511 Earned Income Taxes	13,070,692.24			13,070,692.24
6153 Current Act 511 Real Estate Transfer Taxes	4,920,260.90	374,329.46		4,545,931.44
6411 Delinquent Real Estate Taxes	2,049,665.24	79,020.68		1,970,644.56
6420 Delinquent Per Capita Taxes, Section 679	26,457.04			26,457.04
6500 Earnings on Investments	132,768.60			
6700 Revenues from LEA Activities	305,124.14			
6810 Revenue from Local Governmental Units	35,000.00			
6831 Federal Revenue Received from Other Pennsylvania Public LEAs	3,192.28			
6832 Federal IDEA Revenue Received as Pass Through	1,562,107.03			
6910 Rentals	150,578.35			
6920 Contributions and Donations from Private Sources	138.00			
6942 Summer School Tuition	5,600.00			
6944 Receipts from Other LEAs in Pennsylvania - Education	(5,106.53)			
6991 Refunds of a Prior Year Expenditure	22,104.57			
6992 Energy Efficiency Revenues and Incentives	192,686.83			
6999 Other Revenues Not Specified Above	242,021.96			
TOTAL Revenue from Local Sources	\$138,919,531.47	\$453,350.14		\$135,819,966.10

	Revenue Reported In Current Year			
<u>Revenue from State Sources</u>				
7111 Basic Education Funding-Formula	10,620,070.53			
7112 Basic Education Funding-Social Security	2,810,727.07			
7160 Tuition for Orphans Subsidy	77,696.41			
7271 Special Education funds for School-Aged Pupils	2,901,275.67			
7311 Pupil Transportation Subsidy	1,538,983.67			
7312 Nonpublic and Charter School Pupil Transportation Subsidy	318,780.00			
7320 Rental and Sinking Fund Payments / Building Reimbursement Subsidy	1,028,939.63			
7330 Health Services (Medical, Dental, Nurse, Act 25)	144,073.48			
7340 State Property Tax Reduction Allocation	2,475,990.48			
7505 Ready to Learn Block Grant	442,498.00			
7820 State Share of Retirement Contributions	12,837,490.71			
TOTAL Revenue from State Sources	\$35,196,525.65			

Revenue Reported In Current Year				
Revenue from Federal Sources				
8514 NCLB, Title I - Improving the Academic Achievement of the Disadvantaged	501,213.91			
8515 NCLB, Title II - Preparing, Training and Recruiting High Quality Teachers and Principals	167,556.00			
8517 NCLB, Title IV - 21St Century Schools	43,884.00			
8741 Elementary and Secondary School Emergency Relief Fund (ESSER)	992.38			
8742 Governor's Emergency Education Relief Fund (GEER)	6,078.89			
8743 ESSER II - Elementary and Secondary School Emergency Relief Fund	163,317.16			
8744 ARP ESSER - Elementary and Secondary School Emergency Relief Fund	3,134,719.48			
8749 Other CARES Act Funding	638.50			
8751 ARP ESSER Learning Loss	17,130.94			
8753 ARP ESSER Afterschool Programs	13,332.75			
8810 School-Based Access Medicaid Reimbursement Program (SBAP) Reimbursements (Access)	626,066.19			
8820 Medical Assistance Reimbursement for Administrative Claiming (Quarterly) Program	15,370.75			
TOTAL Revenue from Federal Sources	\$4,690,300.95			

Revenue Reported In Current Year				
<u>Other Financing Sources</u>				
9330 Capital Projects Fund Transfers	115.27			
9340 Debt Service Fund Transfers	1,512,000.00			
9360 Internal Service Fund Transfers	950,000.00			
9990 Insurance Recoveries	1,073.00			
TOTAL Other Financing Sources	\$2,463,188.27			
TOTAL FROM ALL SOURCES	\$181,269,546.34	\$453,350.14		\$135,819,966.10

LEA : 123467303 Spring-Ford Area SD

Printed 11/30/2022 4:22:14 PM

	<u>General Fund (10)</u>	<u>Student Sponsored Activity Fund (21)</u>	<u>Public Purpose Trust (27)</u>	<u>Other Compt Approved (28)</u>	<u>Athletic / Activity (29)</u>	<u>Capital Reserve (690, 1850) (31)</u>
6000 Revenue from Local Sources						
6111 Current Real Estate Taxes	112,897,737.30					
6112 Interim Real Estate Taxes	1,240,570.83					
6113 Public Utility Realty Taxes	121,016.97					
6114 Payments in Lieu of Current Taxes - State / Local	1,776,669.78					
6143 Current Act 511 Local Services Taxes	170,245.94					
6151 Current Act 511 Earned Income Taxes	13,070,692.24					
6153 Current Act 511 Real Estate Transfer Taxes	4,920,260.90					
6411 Delinquent Real Estate Taxes	2,049,665.24					
6420 Delinquent Per Capita Taxes, Section 679	26,457.04					
6500 Earnings on Investments	132,768.60					
6700 Revenues from LEA Activities	305,124.14					
6810 Revenue from Local Governmental Units	35,000.00					
6831 Federal Revenue Received from Other Pennsylvania Public LEAs	3,192.28					
6832 Federal IDEA Revenue Received as Pass Through	1,562,107.03					
6910 Rentals	150,578.35					
6920 Contributions and Donations from Private Sources	138.00					
6942 Summer School Tuition	5,600.00					
6944 Receipts from Other LEAs in Pennsylvania - Education	(5,106.53)					
6991 Refunds of a Prior Year Expenditure	22,104.57					
6992 Energy Efficiency Revenues and Incentives	192,686.83					
6999 Other Revenues Not Specified Above	242,021.96					
6000 Total Revenue from Local Sources	\$138,919,531.47					
7000 Revenue from State Sources						
7111 Basic Education Funding-Formula	10,620,070.53					
7112 Basic Education Funding-Social Security	2,810,727.07					
7160 Tuition for Orphans Subsidy	77,696.41					
7271 Special Education funds for School-Aged Pupils	2,901,275.67					
7311 Pupil Transportation Subsidy	1,538,983.67					
7312 Nonpublic and Charter School Pupil Transportation Subsidy	318,780.00					
7320 Rental and Sinking Fund Payments / Building Reimbursement Subsidy	1,028,939.63					
7330 Health Services (Medical, Dental, Nurse, Act 25)	144,073.48					
7340 State Property Tax Reduction Allocation	2,475,990.48					
7505 Ready to Learn Block Grant	442,498.00					
7820 State Share of Retirement Contributions	12,837,490.71					
7000 Total Revenue from State Sources	\$35,196,525.65					

LEA : 123467303 Spring-Ford Area SD

Printed 11/30/2022 4:22:14 PM

	<u>Capital Reserve</u> <u>(1431) (32)</u>	<u>Other Capital</u> <u>Projects Fund (39)</u>	<u>Debt Service (40)</u>	<u>Permanent (90)</u>	<u>Total</u>
6000 Revenue from Local Sources					
6111 Current Real Estate Taxes					112,897,737.30
6112 Interim Real Estate Taxes					1,240,570.83
6113 Public Utility Realty Taxes					121,016.97
6114 Payments in Lieu of Current Taxes - State / Local					1,776,669.78
6143 Current Act 511 Local Services Taxes					170,245.94
6151 Current Act 511 Earned Income Taxes					13,070,692.24
6153 Current Act 511 Real Estate Transfer Taxes					4,920,260.90
6411 Delinquent Real Estate Taxes					2,049,665.24
6420 Delinquent Per Capita Taxes, Section 679					26,457.04
6500 Earnings on Investments	2,027.68		10,168.82		144,965.10
6700 Revenues from LEA Activities					305,124.14
6810 Revenue from Local Governmental Units					35,000.00
6831 Federal Revenue Received from Other Pennsylvania Public LEAs					3,192.28
6832 Federal IDEA Revenue Received as Pass Through					1,562,107.03
6910 Rentals					150,578.35
6920 Contributions and Donations from Private Sources					138.00
6942 Summer School Tuition					5,600.00
6944 Receipts from Other LEAs in Pennsylvania - Education					(5,106.53)
6991 Refunds of a Prior Year Expenditure					22,104.57
6992 Energy Efficiency Revenues and Incentives					192,686.83
6999 Other Revenues Not Specified Above					242,021.96
6000 Total Revenue from Local Sources	\$2,027.68		\$10,168.82		\$138,931,727.97
7000 Revenue from State Sources					
7111 Basic Education Funding-Formula					10,620,070.53
7112 Basic Education Funding-Social Security					2,810,727.07
7160 Tuition for Orphans Subsidy					77,696.41
7271 Special Education funds for School-Aged Pupils					2,901,275.67
7311 Pupil Transportation Subsidy					1,538,983.67
7312 Nonpublic and Charter School Pupil Transportation Subsidy					318,780.00
7320 Rental and Sinking Fund Payments / Building Reimbursement Subsidy					1,028,939.63
7330 Health Services (Medical, Dental, Nurse, Act 25)					144,073.48
7340 State Property Tax Reduction Allocation					2,475,990.48
7505 Ready to Learn Block Grant					442,498.00
7820 State Share of Retirement Contributions					12,837,490.71
7000 Total Revenue from State Sources					\$35,196,525.65

LEA : 123467303 Spring-Ford Area SD

Printed 11/30/2022 4:22:14 PM

	<u>General Fund (10)</u>	<u>Student Sponsored Activity Fund (21)</u>	<u>Public Purpose Trust (27)</u>	<u>Other Compt Approved (28)</u>	<u>Athletic / Activity (29)</u>	<u>Capital Reserve (690, 1850) (31)</u>
8000 Revenue from Federal Sources						
8514 NCLB, Title I - Improving the Academic Achievement of the Disadvantaged	501,213.91					
8515 NCLB, Title II - Preparing, Training and Recruiting High Quality Teachers and Principals	167,556.00					
8517 NCLB, Title IV - 21st Century Schools	43,884.00					
8741 Elementary and Secondary School Emergency Relief Fund (ESSER)	992.38					
8742 Governor's Emergency Education Relief Fund (GEER)	6,078.89					
8743 ESSER II - Elementary and Secondary School Emergency Relief Fund	163,317.16					
8744 ARP ESSER - Elementary and Secondary School Emergency Relief Fund	3,134,719.48					
8749 Other CARES Act Funding	638.50					
8751 ARP ESSER Learning Loss	17,130.94					
8753 ARP ESSER Afterschool Programs	13,332.75					
8810 School-Based Access Medicaid Reimbursement Program (SBAP) Reimbursements (Access)	626,066.19					
8820 Medical Assistance Reimbursement for Administrative Claiming (Quarterly) Program	15,370.75					
8000 Total Revenue from Federal Sources	\$4,690,300.95					
9000 Other Financing Sources						
9310 General Fund Transfers						
9330 Capital Projects Fund Transfers	115.27					
9340 Debt Service Fund Transfers	1,512,000.00					
9360 Internal Service Fund Transfers	950,000.00					
9990 Insurance Recoveries	1,073.00					
9000 Total Other Financing Sources	\$2,463,188.27					
Total From All Sources	\$181,269,546.34					

LEA : 123467303 Spring-Ford Area SD

Printed 11/30/2022 4:22:14 PM

	<u>Capital Reserve</u> <u>(1431) (32)</u>	<u>Other Capital</u> <u>Projects Fund (39)</u>	<u>Debt Service (40)</u>	<u>Permanent (90)</u>	<u>Total</u>
8000 Revenue from Federal Sources					
8514 NCLB, Title I - Improving the Academic Achievement of the Disadvantaged					501,213.91
8515 NCLB, Title II - Preparing, Training and Recruiting High Quality Teachers and Principals					167,556.00
8517 NCLB, Title IV - 21St Century Schools					43,884.00
8741 Elementary and Secondary School Emergency Relief Fund (ESSER)					992.38
8742 Governor's Emergency Education Relief Fund (GEER)					6,078.89
8743 ESSER II - Elementary and Secondary School Emergency Relief Fund					163,317.16
8744 ARP ESSER - Elementary and Secondary School Emergency Relief Fund					3,134,719.48
8749 Other CARES Act Funding					638.50
8751 ARP ESSER Learning Loss					17,130.94
8753 ARP ESSER Afterschool Programs					13,332.75
8810 School-Based Access Medicaid Reimbursement Program (SBAP) Reimbursements (Access)					626,066.19
8820 Medical Assistance Reimbursement for Administrative Claiming (Quarterly) Program					15,370.75
8000 Total Revenue from Federal Sources					\$4,690,300.95
9000 Other Financing Sources					
9310 General Fund Transfers	4,481,850.00				4,481,850.00
9330 Capital Projects Fund Transfers					115.27
9340 Debt Service Fund Transfers					1,512,000.00
9360 Internal Service Fund Transfers					950,000.00
9990 Insurance Recoveries					1,073.00
9000 Total Other Financing Sources	\$4,481,850.00				\$6,945,038.27
Total From All Sources	\$4,483,877.68		\$10,168.82		\$185,763,592.84

LEA : 123467303 Spring-Ford Area SD

Printed 11/30/2022 4:22:17 PM

	<u>General Fund (10)</u>	<u>Student Sponsored Activity Fund (21)</u>	<u>Public Purpose Trust (27)</u>	<u>Other Compt Approved (28)</u>	<u>Athletic / Activity (29)</u>	<u>Capital Reserve (690. 1850) (31)</u>
Revenue from Local Sources	138,919,531.47					
Revenue from State Sources	35,196,525.65					
Revenue from Federal Sources	4,690,300.95					
Other Financing Sources	2,463,188.27					
Total From All Sources	\$181,269,546.34					

LEA : 123467303 Spring-Ford Area SD

Printed 11/30/2022 4:22:17 PM

	<u>Capital Reserve (1431)</u> <u>(32)</u>	<u>Other Capital Projects</u> <u>Fund (39)</u>	<u>Debt Service (40)</u>	<u>Permanent (90)</u>	<u>Total</u>
Revenue from Local Sources	2,027.68		10,168.82		138,931,727.97
Revenue from State Sources					35,196,525.65
Revenue from Federal Sources					4,690,300.95
Other Financing Sources	4,481,850.00				6,945,038.27
Total From All Sources	\$4,483,877.68		\$10,168.82		\$185,763,592.84

LEA : 123467303 Spring-Ford Area SD

Printed 11/30/2022 4:22:20 PM

General Fund (10)

1000 Instruction		Total
100 <u>Personnel Services – Salaries</u>		
100 Personnel Services – Salaries		52,844,781.73
Total Personnel Services – Salaries		\$52,844,781.73
200 <u>Personnel Services – Employee Benefits</u>		
210 Group Insurance – Contracted Provider		41,783.31
220 Social Security Contributions		3,956,364.61
230 PSERS Retirement Contributions		18,468,940.09
250 Unemployment Compensation		2,537.74
260 Workers' Compensation		250,239.16
270 Group Insurance – Self-Insurance		12,609,686.92
291 Other Retirement Plans		147,223.50
Total Personnel Services – Employee Benefits		\$35,476,775.33
300 <u>Purchased Professional and Technical Services</u>		
322 Professional Educational Services – Ius		2,405,121.76
323 Professional Educational Services – Other Educational Agencies		79,187.89
329 Professional Educational Services – Other		1,933,120.40
330 Other Professional Services		2,191,855.18
Total Purchased Professional and Technical Services		\$6,609,285.23
400 <u>Purchased Property Services</u>		
430 Repairs and Maintenance Services		130,876.15
440 Rentals		254,176.80
Total Purchased Property Services		\$385,052.95
500 <u>Other Purchased Services</u>		
510 Student Transportation Services		17,495.94
530 Communications		8,280.93
549 Other Advertising/Public Relations		133.42
550 Printing and Binding		3,360.60
561 Tuition To Other School Districts Within the State		34,668.72
562 Tuition To Pennsylvania Charter Schools		4,316,263.24
563 Tuition To Nonpublic Schools		1,051,353.24
564 Tuition To Career and Technology Centers		3,565,493.58
566 Tuition To Institutions of Higher Education and Technical Institutes		19,750.00
567 Tuition To Approved Private Schools (APS) and PA Chartered Schools for the Deaf and Blind		1,594,953.93
568 Tuition To Private Residential Rehabilitative Institutions (PRRI) [In-State] and Detention Centers		577,498.30
569 Tuition – Other		109,774.00
580 Travel		3,966.59
594 IU Payment By Withholding for Institutionalized Children's Programs – Special Classes		3,140.09
Total Other Purchased Services		\$11,306,132.58
600 <u>Supplies</u>		
610 General Supplies		433,773.41
630 Food		113.31
640 Books and Periodicals		636,596.64
650 Supplies & Fees – Technology Related		579,814.75

LEA : 123467303 Spring-Ford Area SD

Printed 11/30/2022 4:22:20 PM

General Fund (10)

1000 Instruction		<u>Total</u>
Total Supplies		\$1,650,298.11
700 <u>Property</u>		
752	Capital Equipment – Original and Additional	16,784.00
762	Capitalized Equipment - Replacement	64,502.80
Total Property		\$81,286.80
800 <u>Other Objects</u>		
810	Dues and Fees	40,640.34
890	Miscellaneous Expenditures	19,707.24
Total Other Objects		\$60,347.58
Total 1000 Instruction		\$108,413,960.31

LEA : 123467303 Spring-Ford Area SD

Printed 11/30/2022 4:22:20 PM

General Fund (10)

1100 Regular Programs – Elementary / Secondary

	Elementary	Secondary	Federal	Total
100 <u>Personnel Services – Salaries</u>				
100 Personnel Services – Salaries	18,499,847.26	17,174,483.56	1,054,640.46	36,728,971.28
Total Personnel Services – Salaries	\$18,499,847.26	\$17,174,483.56	\$1,054,640.46	\$36,728,971.28
200 <u>Personnel Services – Employee Benefits</u>				
210 Group Insurance – Contracted Provider	12,916.05	11,781.85	370.09	25,067.99
220 Social Security Contributions	1,405,790.95	1,306,697.67	39,634.53	2,752,123.15
230 PSERS Retirement Contributions	6,563,110.51	6,075,935.27	184,248.48	12,823,294.26
250 Unemployment Compensation	743.49	721.43	21.60	1,486.52
260 Workers' Compensation	74,349.00	68,572.52	2,160.00	145,081.52
270 Group Insurance – Self-Insurance	3,807,445.86	3,302,295.71	108,975.60	7,218,717.17
291 Other Retirement Plans	35,475.00	70,050.00		105,525.00
Total Personnel Services – Employee Benefits	\$11,899,830.86	\$10,836,054.45	\$335,410.30	\$23,071,295.61
300 <u>Purchased Professional and Technical Services</u>				
322 Professional Educational Services – Ius		26,016.64		26,016.64
329 Professional Educational Services – Other	898,989.97	596,000.42	26,841.00	1,521,831.39
330 Other Professional Services			638.50	638.50
Total Purchased Professional and Technical Services	\$898,989.97	\$622,017.06	\$27,479.50	\$1,548,486.53
400 <u>Purchased Property Services</u>				
430 Repairs and Maintenance Services	54,215.16	75,160.99	1,230.00	130,606.15
440 Rentals	121,944.23	132,232.57		254,176.80
Total Purchased Property Services	\$176,159.39	\$207,393.56	\$1,230.00	\$384,782.95
500 <u>Other Purchased Services</u>				
510 Student Transportation Services	450.94	112.50		563.44
530 Communications	4,060.06	4,220.87		8,280.93
550 Printing and Binding	1,063.15	2,297.45		3,360.60
562 Tuition To Pennsylvania Charter Schools	1,337,086.62	1,216,083.27		2,553,169.89
580 Travel	843.37	514.12		1,357.49
Total Other Purchased Services	\$1,343,504.14	\$1,223,228.21		\$2,566,732.35
600 <u>Supplies</u>				
610 General Supplies	213,610.23	186,328.64	4,001.88	403,940.75
630 Food			113.31	113.31
640 Books and Periodicals	122,950.57	467,398.91	237.48	590,586.96
650 Supplies & Fees – Technology Related	104,376.81	237,263.11	127,235.02	468,874.94
Total Supplies	\$440,937.61	\$890,990.66	\$131,587.69	\$1,463,515.96
700 <u>Property</u>				
752 Capital Equipment – Original and Additional		7,488.00		7,488.00
762 Capitalized Equipment - Replacement	31,634.96	32,867.84		64,502.80
Total Property	\$31,634.96	\$40,355.84		\$71,990.80
800 <u>Other Objects</u>				
810 Dues and Fees	16,776.01	22,665.21		39,441.22
890 Miscellaneous Expenditures	500.00	17,121.00		17,621.00

LEA : 123467303 Spring-Ford Area SD

Printed 11/30/2022 4:22:20 PM

General Fund (10)

1100 Regular Programs – Elementary / Secondary	<u>Elementary</u>	<u>Secondary</u>	<u>Federal</u>	<u>Total</u>
Total Other Objects	\$17,276.01	\$39,786.21		\$57,062.22
Total 1100 Regular Programs – Elementary / Secondary	\$33,308,180.20	\$31,034,309.55	\$1,550,347.95	\$65,892,837.70

LEA : 123467303 Spring-Ford Area SD

Printed 11/30/2022 4:22:20 PM

General Fund (10)

1110 Regular Programs

	Elementary	Secondary	Federal	Total
100 <u>Personnel Services – Salaries</u>				
100 Personnel Services – Salaries	18,499,847.26	17,174,483.56	665,810.13	36,340,140.95
Total Personnel Services – Salaries	\$18,499,847.26	\$17,174,483.56	\$665,810.13	\$36,340,140.95
200 <u>Personnel Services – Employee Benefits</u>				
210 Group Insurance – Contracted Provider	12,916.05	11,781.85	68.25	24,766.15
220 Social Security Contributions	1,405,790.95	1,306,697.67	25,139.67	2,737,628.29
230 PSERS Retirement Contributions	6,563,110.51	6,075,935.27	116,319.81	12,755,365.59
250 Unemployment Compensation	743.49	721.43	3.90	1,468.82
260 Workers' Compensation	74,349.00	68,572.52	390.00	143,311.52
270 Group Insurance – Self-Insurance	3,807,445.86	3,302,295.71	2,814.45	7,112,556.02
291 Other Retirement Plans	35,475.00	70,050.00		105,525.00
Total Personnel Services – Employee Benefits	\$11,899,830.86	\$10,836,054.45	\$144,736.08	\$22,880,621.39
300 <u>Purchased Professional and Technical Services</u>				
322 Professional Educational Services – Ius		26,016.64		26,016.64
329 Professional Educational Services – Other	898,989.97	596,000.42	21,234.60	1,516,224.99
Total Purchased Professional and Technical Services	\$898,989.97	\$622,017.06	\$21,234.60	\$1,542,241.63
400 <u>Purchased Property Services</u>				
430 Repairs and Maintenance Services	54,215.16	75,160.99	1,230.00	130,606.15
440 Rentals	121,944.23	132,232.57		254,176.80
Total Purchased Property Services	\$176,159.39	\$207,393.56	\$1,230.00	\$384,782.95
500 <u>Other Purchased Services</u>				
510 Student Transportation Services	450.94	112.50		563.44
530 Communications	4,060.06	4,220.87		8,280.93
550 Printing and Binding	1,063.15	2,297.45		3,360.60
562 Tuition To Pennsylvania Charter Schools	1,337,086.62	1,216,083.27		2,553,169.89
580 Travel	843.37	514.12		1,357.49
Total Other Purchased Services	\$1,343,504.14	\$1,223,228.21		\$2,566,732.35
600 <u>Supplies</u>				
610 General Supplies	213,610.23	186,328.64	87.39	400,026.26
630 Food			113.31	113.31
640 Books and Periodicals	122,950.57	467,398.91	237.48	590,586.96
650 Supplies & Fees – Technology Related	104,376.81	237,263.11	127,235.02	468,874.94
Total Supplies	\$440,937.61	\$890,990.66	\$127,673.20	\$1,459,601.47
700 <u>Property</u>				
752 Capital Equipment – Original and Additional		7,488.00		7,488.00
762 Capitalized Equipment - Replacement	31,634.96	32,867.84		64,502.80
Total Property	\$31,634.96	\$40,355.84		\$71,990.80
800 <u>Other Objects</u>				
810 Dues and Fees	16,776.01	22,665.21		39,441.22
890 Miscellaneous Expenditures	500.00	17,121.00		17,621.00
Total Other Objects	\$17,276.01	\$39,786.21		\$57,062.22
Total 1110 Regular Programs	\$33,308,180.20	\$31,034,309.55	\$960,684.01	\$65,303,173.76

LEA : 123467303 Spring-Ford Area SD

Printed 11/30/2022 4:22:20 PM

General Fund (10)

1190 Federally-Funded Regular Programs	<u>Elementary</u>	<u>Secondary</u>	<u>Federal</u>	<u>Total</u>
100 <u>Personnel Services – Salaries</u>				
100 Personnel Services – Salaries			388,830.33	388,830.33
Total Personnel Services – Salaries			\$388,830.33	\$388,830.33
200 <u>Personnel Services – Employee Benefits</u>				
210 Group Insurance – Contracted Provider			301.84	301.84
220 Social Security Contributions			14,494.86	14,494.86
230 PSERS Retirement Contributions			67,928.67	67,928.67
250 Unemployment Compensation			17.70	17.70
260 Workers' Compensation			1,770.00	1,770.00
270 Group Insurance – Self-Insurance			106,161.15	106,161.15
Total Personnel Services – Employee Benefits			\$190,674.22	\$190,674.22
300 <u>Purchased Professional and Technical Services</u>				
329 Professional Educational Services – Other			5,606.40	5,606.40
330 Other Professional Services			638.50	638.50
Total Purchased Professional and Technical Services			\$6,244.90	\$6,244.90
600 <u>Supplies</u>				
610 General Supplies			3,914.49	3,914.49
Total Supplies			\$3,914.49	\$3,914.49
Total 1190 Federally-Funded Regular Programs			\$589,663.94	\$589,663.94

LEA : 123467303 Spring-Ford Area SD

Printed 11/30/2022 4:22:20 PM

General Fund (10)

1200 Special Programs – Elementary / Secondary

	Elementary	Secondary	Federal	Total
100 <u>Personnel Services – Salaries</u>				
100 Personnel Services – Salaries	8,280,374.01	6,141,302.43	1,205,964.53	15,627,640.97
Total Personnel Services – Salaries	\$8,280,374.01	\$6,141,302.43	\$1,205,964.53	\$15,627,640.97
200 <u>Personnel Services – Employee Benefits</u>				
210 Group Insurance – Contracted Provider	9,368.11	5,893.65	1,448.86	16,710.62
220 Social Security Contributions	635,232.14	486,945.43	45,112.51	1,167,290.08
230 PSERS Retirement Contributions	2,985,662.05	2,274,269.58	213,568.37	5,473,500.00
250 Unemployment Compensation	596.20	362.83	92.19	1,051.22
260 Workers' Compensation	59,655.48	36,283.40	9,218.76	105,157.64
270 Group Insurance – Self-Insurance	3,178,374.78	1,801,973.38	410,621.59	5,390,969.75
291 Other Retirement Plans	34,911.00	6,787.50		41,698.50
Total Personnel Services – Employee Benefits	\$6,903,799.76	\$4,612,515.77	\$680,062.28	\$12,196,377.81
300 <u>Purchased Professional and Technical Services</u>				
322 Professional Educational Services – lus	611,591.91	1,630,749.90	132,060.31	2,374,402.12
323 Professional Educational Services – Other Educational Agencies	12,740.00	34,313.94		47,053.94
329 Professional Educational Services – Other	266,424.04	141,670.57	3,194.40	411,289.01
330 Other Professional Services	1,300,924.85	707,778.31	182,513.52	2,191,216.68
Total Purchased Professional and Technical Services	\$2,191,680.80	\$2,514,512.72	\$317,768.23	\$5,023,961.75
400 <u>Purchased Property Services</u>				
430 Repairs and Maintenance Services			270.00	270.00
Total Purchased Property Services			\$270.00	\$270.00
500 <u>Other Purchased Services</u>				
510 Student Transportation Services	2,518.75	11,372.50	3,041.25	16,932.50
549 Other Advertising/Public Relations	68.04	65.38		133.42
561 Tuition To Other School Districts Within the State		29,507.13		29,507.13
562 Tuition To Pennsylvania Charter Schools	653,193.66	1,109,899.69		1,763,093.35
563 Tuition To Nonpublic Schools	385,075.60	666,277.64		1,051,353.24
564 Tuition To Career and Technology Centers		16,380.00		16,380.00
566 Tuition To Institutions of Higher Education and Technical Institutes		3,000.00		3,000.00
567 Tuition To Approved Private Schools (APS) and PA Chartered Schools for the Deaf and Blind	621,578.33	973,375.60		1,594,953.93
568 Tuition To Private Residential Rehabilitative Institutions (PRRI) [In-State] and Detention Centers	36,750.00	540,748.30		577,498.30
569 Tuition – Other	65,324.00	44,450.00		109,774.00
580 Travel	1,136.52	1,420.17		2,556.69
594 IU Payment By Withholding for Institutionalized Children's Programs – Special Classes	3,140.09			3,140.09
Total Other Purchased Services	\$1,768,784.99	\$3,396,496.41	\$3,041.25	\$5,168,322.65
600 <u>Supplies</u>				
610 General Supplies	10,241.34	3,782.70	9,633.15	23,657.19
640 Books and Periodicals	6,824.86	3,620.26	34,661.12	45,106.24
650 Supplies & Fees – Technology Related	3,979.26	12,125.61	61,395.94	77,500.81
Total Supplies	\$21,045.46	\$19,528.57	\$105,690.21	\$146,264.24
700 <u>Property</u>				
752 Capital Equipment – Original and Additional			9,296.00	9,296.00
Total Property			\$9,296.00	\$9,296.00

LEA : 123467303 Spring-Ford Area SD

Printed 11/30/2022 4:22:20 PM

General Fund (10)

1200 Special Programs – Elementary / Secondary	<u>Elementary</u>	<u>Secondary</u>	<u>Federal</u>	<u>Total</u>
800 <u>Other Objects</u>				
810 Dues and Fees	366.40	832.72		1,199.12
890 Miscellaneous Expenditures	724.87	1,251.37	110.00	2,086.24
Total Other Objects	\$1,091.27	\$2,084.09	\$110.00	\$3,285.36
Total 1200 Special Programs – Elementary / Secondary	\$19,166,776.29	\$16,686,439.99	\$2,322,202.50	\$38,175,418.78

LEA : 123467303 Spring-Ford Area SD

Printed 11/30/2022 4:22:20 PM

General Fund (10)

1210 Life Skills Support

	<u>Elementary</u>	<u>Secondary</u>	<u>Federal</u>	<u>Total</u>
300 <u>Purchased Professional and Technical Services</u>				
322 Professional Educational Services – Ius	12,988.26	34,347.72		47,335.98
330 Other Professional Services	60,533.00	18,549.19		79,082.19
Total Purchased Professional and Technical Services	\$73,521.26	\$52,896.91		\$126,418.17
500 <u>Other Purchased Services</u>				
567 Tuition To Approved Private Schools (APS) and PA Chartered Schools for the Deaf and Blind		5,166.60		5,166.60
Total Other Purchased Services		\$5,166.60		\$5,166.60
600 <u>Supplies</u>				
610 General Supplies	57.99	65.29		123.28
650 Supplies & Fees – Technology Related			299.99	299.99
Total Supplies	\$57.99	\$65.29	\$299.99	\$423.27
Total 1210 Life Skills Support	\$73,579.25	\$58,128.80	\$299.99	\$132,008.04

LEA : 123467303 Spring-Ford Area SD

Printed 11/30/2022 4:22:20 PM

General Fund (10)

1220 Sensory Support	Elementary	Secondary	Federal	Total
100 Personnel Services – Salaries				
100 Personnel Services – Salaries	931,019.68	97,409.87		1,028,429.55
Total Personnel Services – Salaries	\$931,019.68	\$97,409.87		\$1,028,429.55
200 Personnel Services – Employee Benefits				
210 Group Insurance – Contracted Provider	658.93	86.57		745.50
220 Social Security Contributions	69,609.71	7,451.93		77,061.64
230 PSERS Retirement Contributions	325,370.42	33,698.90		359,069.32
250 Unemployment Compensation	38.55	4.95		43.50
260 Workers' Compensation	3,855.00	495.00		4,350.00
270 Group Insurance – Self-Insurance	187,741.37	460.78		188,202.15
Total Personnel Services – Employee Benefits	\$587,273.98	\$42,198.13		\$629,472.11
300 Purchased Professional and Technical Services				
322 Professional Educational Services – Ius	357,792.34	36,425.02	28,358.31	422,575.67
329 Professional Educational Services – Other	192.00			192.00
330 Other Professional Services	81,623.55	25,778.11		107,401.66
Total Purchased Professional and Technical Services	\$439,607.89	\$62,203.13	\$28,358.31	\$530,169.33
500 Other Purchased Services				
580 Travel	386.16	42.12		428.28
Total Other Purchased Services	\$386.16	\$42.12		\$428.28
600 Supplies				
610 General Supplies	2,639.11		3,580.02	6,219.13
640 Books and Periodicals	34.00		148.50	182.50
650 Supplies & Fees – Technology Related	1,816.13	73.50	299.99	2,189.62
Total Supplies	\$4,489.24	\$73.50	\$4,028.51	\$8,591.25
Total 1220 Sensory Support	\$1,962,776.95	\$201,926.75	\$32,386.82	\$2,197,090.52

LEA : 123467303 Spring-Ford Area SD

Printed 11/30/2022 4:22:20 PM

General Fund (10)

1230 Emotional Support	Elementary	Secondary	Federal	Total
100 <u>Personnel Services – Salaries</u>				
100 Personnel Services – Salaries	3,156,505.15	1,310,535.00	320,211.96	4,787,252.11
Total Personnel Services – Salaries	\$3,156,505.15	\$1,310,535.00	\$320,211.96	\$4,787,252.11
200 <u>Personnel Services – Employee Benefits</u>				
210 Group Insurance – Contracted Provider	4,683.19	1,409.53	477.61	6,570.33
220 Social Security Contributions	241,449.20	103,835.95	11,916.58	357,201.73
230 PSERS Retirement Contributions	1,136,308.11	484,324.89	56,591.64	1,677,224.64
250 Unemployment Compensation	307.65	88.48	32.55	428.68
260 Workers' Compensation	30,798.48	8,846.40	3,254.76	42,899.64
270 Group Insurance – Self-Insurance	1,587,015.25	446,928.73	167,154.61	2,201,098.59
291 Other Retirement Plans	20,199.00			20,199.00
Total Personnel Services – Employee Benefits	\$3,020,760.88	\$1,045,433.98	\$239,427.75	\$4,305,622.61
300 <u>Purchased Professional and Technical Services</u>				
322 Professional Educational Services – Ius	70,451.31	796,652.36		867,103.67
323 Professional Educational Services – Other Educational Agencies	12,740.00	34,313.94		47,053.94
329 Professional Educational Services – Other	104,357.16	28,511.08	1,274.40	134,142.64
330 Other Professional Services	776,985.36	535,724.60		1,312,709.96
Total Purchased Professional and Technical Services	\$964,533.83	\$1,395,201.98	\$1,274.40	\$2,361,010.21
500 <u>Other Purchased Services</u>				
510 Student Transportation Services	1,050.00	2,041.62	540.09	3,631.71
561 Tuition To Other School Districts Within the State		29,507.13		29,507.13
563 Tuition To Nonpublic Schools	385,075.60	429,393.87		814,469.47
566 Tuition To Institutions of Higher Education and Technical Institutes		3,000.00		3,000.00
567 Tuition To Approved Private Schools (APS) and PA Chartered Schools for the Deaf and Blind	461,431.00	254,054.00		715,485.00
568 Tuition To Private Residential Rehabilitative Institutions (PRRI) [In-State] and Detention Centers	36,750.00	483,373.30		520,123.30
569 Tuition – Other	1,400.00			1,400.00
580 Travel	239.99	38.53		278.52
Total Other Purchased Services	\$885,946.59	\$1,201,408.45	\$540.09	\$2,087,895.13
600 <u>Supplies</u>				
610 General Supplies	3,956.95	821.88	4,551.83	9,330.66
640 Books and Periodicals	5,005.60		2,640.36	7,645.96
650 Supplies & Fees – Technology Related	939.82	2,482.47	20,547.28	23,969.57
Total Supplies	\$9,902.37	\$3,304.35	\$27,739.47	\$40,946.19
800 <u>Other Objects</u>				
810 Dues and Fees	275.75			275.75
890 Miscellaneous Expenditures	435.37			435.37
Total Other Objects	\$711.12			\$711.12
Total 1230 Emotional Support	\$8,038,359.94	\$4,955,883.76	\$589,193.67	\$13,583,437.37

LEA : 123467303 Spring-Ford Area SD

Printed 11/30/2022 4:22:20 PM

General Fund (10)

1240 Academic Support

	Elementary	Secondary	Federal	Total
100 <u>Personnel Services – Salaries</u>				
100 Personnel Services – Salaries	4,192,849.18	4,650,688.37	885,752.57	9,729,290.12
Total Personnel Services – Salaries	\$4,192,849.18	\$4,650,688.37	\$885,752.57	\$9,729,290.12
200 <u>Personnel Services – Employee Benefits</u>				
210 Group Insurance – Contracted Provider	4,025.99	4,287.30	971.25	9,284.54
220 Social Security Contributions	324,173.23	369,528.14	33,195.93	726,897.30
230 PSERS Retirement Contributions	1,523,983.52	1,727,361.07	156,976.73	3,408,321.32
250 Unemployment Compensation	250.00	262.50	59.64	572.14
260 Workers' Compensation	25,002.00	26,252.00	5,964.00	57,218.00
270 Group Insurance – Self-Insurance	1,403,618.16	1,308,795.99	243,466.98	2,955,881.13
291 Other Retirement Plans	14,712.00	6,787.50		21,499.50
Total Personnel Services – Employee Benefits	\$3,295,764.90	\$3,443,274.50	\$440,634.53	\$7,179,673.93
300 <u>Purchased Professional and Technical Services</u>				
322 Professional Educational Services – lus		293,610.94		293,610.94
329 Professional Educational Services – Other	161,874.88	112,333.26	1,920.00	276,128.14
330 Other Professional Services	318,158.89	123,482.42	182,513.52	624,154.83
Total Purchased Professional and Technical Services	\$480,033.77	\$529,426.62	\$184,433.52	\$1,193,893.91
500 <u>Other Purchased Services</u>				
510 Student Transportation Services	1,468.75	9,330.88	2,501.16	13,300.79
563 Tuition To Nonpublic Schools		236,883.77		236,883.77
564 Tuition To Career and Technology Centers		16,380.00		16,380.00
568 Tuition To Private Residential Rehabilitative Institutions (PRRI) [In-State] and Detention Centers		57,375.00		57,375.00
569 Tuition – Other	63,924.00	44,450.00		108,374.00
580 Travel	510.37	1,339.52		1,849.89
Total Other Purchased Services	\$65,903.12	\$365,759.17	\$2,501.16	\$434,163.45
600 <u>Supplies</u>				
610 General Supplies	3,587.29	2,051.37	1,501.30	7,139.96
640 Books and Periodicals	1,785.26	3,620.26	31,872.26	37,277.78
650 Supplies & Fees – Technology Related	1,223.31	5,591.05	14,868.64	21,683.00
Total Supplies	\$6,595.86	\$11,262.68	\$48,242.20	\$66,100.74
800 <u>Other Objects</u>				
810 Dues and Fees	90.65	832.72		923.37
890 Miscellaneous Expenditures	289.50	1,251.37	110.00	1,650.87
Total Other Objects	\$380.15	\$2,084.09	\$110.00	\$2,574.24
Total 1240 Academic Support	\$8,041,526.98	\$9,002,495.43	\$1,561,673.98	\$18,605,696.39

LEA : 123467303 Spring-Ford Area SD

Printed 11/30/2022 4:22:20 PM

General Fund (10)

1241 Learning Support – Public	Elementary	Secondary	Federal	Total
100 Personnel Services – Salaries				
100 Personnel Services – Salaries	3,896,986.54	4,144,022.93	880,392.89	8,921,402.36
Total Personnel Services – Salaries	\$3,896,986.54	\$4,144,022.93	\$880,392.89	\$8,921,402.36
200 Personnel Services – Employee Benefits				
210 Group Insurance – Contracted Provider	3,792.42	3,969.00	971.25	8,732.67
220 Social Security Contributions	302,059.56	331,519.17	32,993.67	666,572.40
230 PSERS Retirement Contributions	1,420,609.11	1,549,395.74	156,040.40	3,126,045.25
250 Unemployment Compensation	234.85	243.70	59.64	538.19
260 Workers' Compensation	23,487.00	24,372.00	5,964.00	53,823.00
270 Group Insurance – Self-Insurance	1,323,187.66	1,206,069.25	243,466.98	2,772,723.89
291 Other Retirement Plans	14,712.00	6,787.50		21,499.50
Total Personnel Services – Employee Benefits	\$3,088,082.60	\$3,122,356.36	\$439,495.94	\$6,649,934.90
300 Purchased Professional and Technical Services				
322 Professional Educational Services – lus		293,610.94		293,610.94
329 Professional Educational Services – Other	159,400.18	104,169.41	1,920.00	265,489.59
330 Other Professional Services	318,158.89	123,482.42	182,513.52	624,154.83
Total Purchased Professional and Technical Services	\$477,559.07	\$521,262.77	\$184,433.52	\$1,183,255.36
500 Other Purchased Services				
510 Student Transportation Services	1,468.75	8,829.63	2,501.16	12,799.54
563 Tuition To Nonpublic Schools		172,393.77		172,393.77
564 Tuition To Career and Technology Centers		16,380.00		16,380.00
568 Tuition To Private Residential Rehabilitative Institutions (PRRI) [In-State] and Detention Centers		57,375.00		57,375.00
569 Tuition – Other	63,924.00	44,450.00		108,374.00
580 Travel		1,339.52		1,339.52
Total Other Purchased Services	\$65,392.75	\$300,767.92	\$2,501.16	\$368,661.83
600 Supplies				
610 General Supplies	3,517.64	2,051.37	1,501.30	7,070.31
640 Books and Periodicals	972.14	3,620.26	31,872.26	36,464.66
650 Supplies & Fees – Technology Related	1,078.33	5,591.05	14,769.64	21,439.02
Total Supplies	\$5,568.11	\$11,262.68	\$48,143.20	\$64,973.99
800 Other Objects				
810 Dues and Fees	90.65	557.72		648.37
890 Miscellaneous Expenditures	289.50	371.37	110.00	770.87
Total Other Objects	\$380.15	\$929.09	\$110.00	\$1,419.24
Total 1241 Learning Support – Public	\$7,533,969.22	\$8,100,601.75	\$1,555,076.71	\$17,189,647.68

LEA : 123467303 Spring-Ford Area SD

Printed 11/30/2022 4:22:20 PM

General Fund (10)

1243 Gifted Support

	<u>Elementary</u>	<u>Secondary</u>	<u>Federal</u>	<u>Total</u>
100 <u>Personnel Services – Salaries</u>				
100 Personnel Services – Salaries	295,862.64	506,665.44	5,359.68	807,887.76
Total Personnel Services – Salaries	\$295,862.64	\$506,665.44	\$5,359.68	\$807,887.76
200 <u>Personnel Services – Employee Benefits</u>				
210 Group Insurance – Contracted Provider	233.57	318.30		551.87
220 Social Security Contributions	22,113.67	38,008.97	202.26	60,324.90
230 PSERS Retirement Contributions	103,374.41	177,965.33	936.33	282,276.07
250 Unemployment Compensation	15.15	18.80		33.95
260 Workers' Compensation	1,515.00	1,880.00		3,395.00
270 Group Insurance – Self-Insurance	80,430.50	102,726.74		183,157.24
Total Personnel Services – Employee Benefits	\$207,682.30	\$320,918.14	\$1,138.59	\$529,739.03
300 <u>Purchased Professional and Technical Services</u>				
329 Professional Educational Services – Other	2,474.70	8,163.85		10,638.55
Total Purchased Professional and Technical Services	\$2,474.70	\$8,163.85		\$10,638.55
500 <u>Other Purchased Services</u>				
510 Student Transportation Services		501.25		501.25
563 Tuition To Nonpublic Schools		64,490.00		64,490.00
580 Travel	510.37			510.37
Total Other Purchased Services	\$510.37	\$64,991.25		\$65,501.62
600 <u>Supplies</u>				
610 General Supplies	69.65			69.65
640 Books and Periodicals	813.12			813.12
650 Supplies & Fees – Technology Related	144.98		99.00	243.98
Total Supplies	\$1,027.75		\$99.00	\$1,126.75
800 <u>Other Objects</u>				
810 Dues and Fees		275.00		275.00
890 Miscellaneous Expenditures		880.00		880.00
Total Other Objects		\$1,155.00		\$1,155.00
Total 1243 Gifted Support	\$507,557.76	\$901,893.68	\$6,597.27	\$1,416,048.71

LEA : 123467303 Spring-Ford Area SD

Printed 11/30/2022 4:22:20 PM

General Fund (10)				
1270 Multi-Handicapped Support	<u>Elementary</u>	<u>Secondary</u>	<u>Federal</u>	<u>Total</u>
100 <u>Personnel Services – Salaries</u>				
100 Personnel Services – Salaries		82,669.19		82,669.19
Total Personnel Services – Salaries		\$82,669.19		\$82,669.19
200 <u>Personnel Services – Employee Benefits</u>				
210 Group Insurance – Contracted Provider		110.25		110.25
220 Social Security Contributions		6,129.41		6,129.41
230 PSERS Retirement Contributions		28,884.72		28,884.72
250 Unemployment Compensation		6.90		6.90
260 Workers' Compensation		690.00		690.00
270 Group Insurance – Self-Insurance		45,787.88		45,787.88
Total Personnel Services – Employee Benefits		\$81,609.16		\$81,609.16
300 <u>Purchased Professional and Technical Services</u>				
322 Professional Educational Services – Ius	10,956.00	237,163.75	98,410.00	346,529.75
329 Professional Educational Services – Other		826.23		826.23
330 Other Professional Services	63,624.05	4,243.99		67,868.04
Total Purchased Professional and Technical Services	\$74,580.05	\$242,233.97	\$98,410.00	\$415,224.02
500 <u>Other Purchased Services</u>				
567 Tuition To Approved Private Schools (APS) and PA Chartered Schools for the Deaf and Blind		217,055.00		217,055.00
Total Other Purchased Services		\$217,055.00		\$217,055.00
600 <u>Supplies</u>				
610 General Supplies		413.86		413.86
Total Supplies		\$413.86		\$413.86
700 <u>Property</u>				
752 Capital Equipment – Original and Additional			9,296.00	9,296.00
Total Property			\$9,296.00	\$9,296.00
Total 1270 Multi-Handicapped Support	\$74,580.05	\$623,981.18	\$107,706.00	\$806,267.23

LEA : 123467303 Spring-Ford Area SD

Printed 11/30/2022 4:22:20 PM

General Fund (10)

1280 Early Intervention Support

	<u>Elementary</u>	<u>Secondary</u>	<u>Federal</u>	<u>Total</u>
300 <u>Purchased Professional and Technical Services</u>				
322 Professional Educational Services – lus	159,144.00		5,292.00	164,436.00
Total Purchased Professional and Technical Services	\$159,144.00		\$5,292.00	\$164,436.00
Total 1280 Early Intervention Support	\$159,144.00		\$5,292.00	\$164,436.00

LEA : 123467303 Spring-Ford Area SD

Printed 11/30/2022 4:22:20 PM

General Fund (10)

1290 Special Programs - Other Support	Elementary	Secondary	Federal	Total
300 <u>Purchased Professional and Technical Services</u>				
322 Professional Educational Services – lus	260.00	232,550.11		232,810.11
Total Purchased Professional and Technical Services	\$260.00	\$232,550.11		\$232,810.11
400 <u>Purchased Property Services</u>				
430 Repairs and Maintenance Services			270.00	270.00
Total Purchased Property Services			\$270.00	\$270.00
500 <u>Other Purchased Services</u>				
549 Other Advertising/Public Relations	68.04	65.38		133.42
562 Tuition To Pennsylvania Charter Schools	653,193.66	1,109,899.69		1,763,093.35
567 Tuition To Approved Private Schools (APS) and PA Chartered Schools for the Deaf and Blind	160,147.33	497,100.00		657,247.33
594 IU Payment By Withholding for Institutionalized Children's Programs – Special Classes	3,140.09			3,140.09
Total Other Purchased Services	\$816,549.12	\$1,607,065.07		\$2,423,614.19
600 <u>Supplies</u>				
610 General Supplies		430.30		430.30
650 Supplies & Fees – Technology Related		3,978.59	25,380.04	29,358.63
Total Supplies		\$4,408.89	\$25,380.04	\$29,788.93
Total 1290 Special Programs - Other Support	\$816,809.12	\$1,844,024.07	\$25,650.04	\$2,686,483.23

LEA : 123467303 Spring-Ford Area SD

Printed 11/30/2022 4:22:20 PM

General Fund (10)

1300 Vocational Education

500 Other Purchased Services

	<u>Elementary</u>	<u>Secondary</u>	<u>Federal</u>	<u>Total</u>
564 Tuition To Career and Technology Centers		3,549,113.58		3,549,113.58
Total Other Purchased Services		\$3,549,113.58		\$3,549,113.58
Total 1300 Vocational Education		\$3,549,113.58		\$3,549,113.58

LEA : 123467303 Spring-Ford Area SD

Printed 11/30/2022 4:22:20 PM

General Fund (10)

1400 Other Instructional Programs – Elementary / Secondary	Elementary	Secondary	Federal	Total
100 Personnel Services – Salaries				
100 Personnel Services – Salaries	170,357.94	153,031.54	164,780.00	488,169.48
Total Personnel Services – Salaries	\$170,357.94	\$153,031.54	\$164,780.00	\$488,169.48
200 Personnel Services – Employee Benefits				
210 Group Insurance – Contracted Provider	2.40	2.30		4.70
220 Social Security Contributions	16,150.90	14,604.01	6,196.47	36,951.38
230 PSERS Retirement Contributions	75,174.19	68,042.01	28,929.63	172,145.83
Total Personnel Services – Employee Benefits	\$91,327.49	\$82,648.32	\$35,126.10	\$209,101.91
300 Purchased Professional and Technical Services				
322 Professional Educational Services – Ius		3,405.00		3,405.00
323 Professional Educational Services – Other Educational Agencies	9,694.70	22,439.25		32,133.95
Total Purchased Professional and Technical Services	\$9,694.70	\$25,844.25		\$35,538.95
500 Other Purchased Services				
561 Tuition To Other School Districts Within the State	2,632.41	2,529.18		5,161.59
580 Travel	26.73	25.68		52.41
Total Other Purchased Services	\$2,659.14	\$2,554.86		\$5,214.00
600 Supplies				
610 General Supplies			5,835.59	5,835.59
640 Books and Periodicals			903.44	903.44
650 Supplies & Fees – Technology Related	(780.00)	(2,696.50)	36,263.00	32,786.50
Total Supplies	(\$780.00)	(\$2,696.50)	\$43,002.03	\$39,525.53
Total 1400 Other Instructional Programs – Elementary / Secondary	\$273,259.27	\$261,382.47	\$242,908.13	\$777,549.87

LEA : 123467303 Spring-Ford Area SD

Printed 11/30/2022 4:22:20 PM

General Fund (10)				
1420 Summer School	<u>Elementary</u>	<u>Secondary</u>	<u>Federal</u>	<u>Total</u>
100 <u>Personnel Services – Salaries</u>				
100 Personnel Services – Salaries	162,722.64	148,346.84	153,800.00	464,869.48
Total Personnel Services – Salaries	\$162,722.64	\$148,346.84	\$153,800.00	\$464,869.48
200 <u>Personnel Services – Employee Benefits</u>				
210 Group Insurance – Contracted Provider	2.40	2.30		4.70
220 Social Security Contributions	15,314.16	14,101.75	5,787.29	35,203.20
230 PSERS Retirement Contributions	71,250.68	65,704.02	26,986.06	163,940.76
Total Personnel Services – Employee Benefits	\$86,567.24	\$79,808.07	\$32,773.35	\$199,148.66
300 <u>Purchased Professional and Technical Services</u>				
323 Professional Educational Services – Other Educational Agencies	9,544.70			9,544.70
Total Purchased Professional and Technical Services	\$9,544.70			\$9,544.70
500 <u>Other Purchased Services</u>				
580 Travel	26.73	25.68		52.41
Total Other Purchased Services	\$26.73	\$25.68		\$52.41
600 <u>Supplies</u>				
610 General Supplies			5,835.59	5,835.59
640 Books and Periodicals			903.44	903.44
650 Supplies & Fees – Technology Related	(780.00)	(3,120.00)	36,263.00	32,363.00
Total Supplies	(\$780.00)	(\$3,120.00)	\$43,002.03	\$39,102.03
Total 1420 Summer School	\$258,081.31	\$225,060.59	\$229,575.38	\$712,717.28

LEA : 123467303 Spring-Ford Area SD

Printed 11/30/2022 4:22:20 PM

General Fund (10)

1430 Homebound Instruction

	<u>Elementary</u>	<u>Secondary</u>	<u>Federal</u>	<u>Total</u>
100 <u>Personnel Services – Salaries</u>				
100 Personnel Services – Salaries	4,050.00	1,240.00		5,290.00
Total Personnel Services – Salaries	\$4,050.00	\$1,240.00		\$5,290.00
200 <u>Personnel Services – Employee Benefits</u>				
220 Social Security Contributions	305.08	94.18		399.26
230 PSERS Retirement Contributions	1,428.33	433.26		1,861.59
Total Personnel Services – Employee Benefits	\$1,733.41	\$527.44		\$2,260.85
300 <u>Purchased Professional and Technical Services</u>				
322 Professional Educational Services – Ius		1,288.00		1,288.00
323 Professional Educational Services – Other Educational Agencies	150.00	22,439.25		22,589.25
Total Purchased Professional and Technical Services	\$150.00	\$23,727.25		\$23,877.25
600 <u>Supplies</u>				
650 Supplies & Fees – Technology Related		423.50		423.50
Total Supplies		\$423.50		\$423.50
Total 1430 Homebound Instruction	\$5,933.41	\$25,918.19		\$31,851.60

LEA : 123467303 Spring-Ford Area SD

Printed 11/30/2022 4:22:20 PM

General Fund (10)

1440 Alternative Regular Education Programs	<u>Elementary</u>	<u>Secondary</u>	<u>Federal</u>	<u>Total</u>
300 <u>Purchased Professional and Technical Services</u>				
322 Professional Educational Services – lus		2,117.00		2,117.00
Total Purchased Professional and Technical Services		\$2,117.00		\$2,117.00
500 <u>Other Purchased Services</u>				
561 Tuition To Other School Districts Within the State	2,632.41	2,529.18		5,161.59
Total Other Purchased Services	\$2,632.41	\$2,529.18		\$5,161.59
Total 1440 Alternative Regular Education Programs	\$2,632.41	\$4,646.18		\$7,278.59

LEA : 123467303 Spring-Ford Area SD

Printed 11/30/2022 4:22:20 PM

General Fund (10)

1441 Adjudicated / Court-Placed Programs	<u>Elementary</u>	<u>Secondary</u>	<u>Federal</u>	<u>Total</u>
300 <u>Purchased Professional and Technical Services</u>				
322 Professional Educational Services – Ius		2,117.00		2,117.00
Total Purchased Professional and Technical Services		\$2,117.00		\$2,117.00
500 <u>Other Purchased Services</u>				
561 Tuition To Other School Districts Within the State	2,632.41	2,529.18		5,161.59
Total Other Purchased Services	\$2,632.41	\$2,529.18		\$5,161.59
Total 1441 Adjudicated / Court-Placed Programs	\$2,632.41	\$4,646.18		\$7,278.59

LEA : 123467303 Spring-Ford Area SD

Printed 11/30/2022 4:22:20 PM

General Fund (10)

1450 Instructional Programs Outside the Established School Day	<u>Elementary</u>	<u>Secondary</u>	<u>Federal</u>	<u>Total</u>
100 <u>Personnel Services – Salaries</u>				
100 Personnel Services – Salaries	3,585.30	3,444.70	10,980.00	18,010.00
Total Personnel Services – Salaries	\$3,585.30	\$3,444.70	\$10,980.00	\$18,010.00
200 <u>Personnel Services – Employee Benefits</u>				
220 Social Security Contributions	531.66	408.08	409.18	1,348.92
230 PSERS Retirement Contributions	2,495.18	1,904.73	1,943.57	6,343.48
Total Personnel Services – Employee Benefits	\$3,026.84	\$2,312.81	\$2,352.75	\$7,692.40
Total 1450 Instructional Programs Outside the Established School Day	\$6,612.14	\$5,757.51	\$13,332.75	\$25,702.40

LEA : 123467303 Spring-Ford Area SD

Printed 11/30/2022 4:22:20 PM

General Fund (10)

1500 Nonpublic School Programs

	<u>Elementary</u>	<u>Secondary</u>	<u>Federal</u>	<u>Total</u>
300 <u>Purchased Professional and Technical Services</u>				
322 Professional Educational Services – lus			1,298.00	1,298.00
Total Purchased Professional and Technical Services			\$1,298.00	\$1,298.00
600 <u>Supplies</u>				
610 General Supplies			339.88	339.88
650 Supplies & Fees – Technology Related			652.50	652.50
Total Supplies			\$992.38	\$992.38
Total 1500 Nonpublic School Programs			\$2,290.38	\$2,290.38

LEA : 123467303 Spring-Ford Area SD

Printed 11/30/2022 4:22:20 PM

General Fund (10)

1700 Higher Education Programs for Secondary Students	<u>Elementary</u>	<u>Secondary</u>	<u>Federal</u>	<u>Total</u>
500 <u>Other Purchased Services</u>				
566 Tuition To Institutions of Higher Education and Technical Institutes				16,750.00
Total Other Purchased Services				\$16,750.00
Total 1700 Higher Education Programs for Secondary Students				\$16,750.00

LEA : 123467303 Spring-Ford Area SD

Printed 11/30/2022 4:22:25 PM

General Fund (10)

2000 Support Services

Total

100	<u>Personnel Services – Salaries</u>	
100	Personnel Services – Salaries	19,339,440.25
Total Personnel Services – Salaries		\$19,339,440.25
200	<u>Personnel Services – Employee Benefits</u>	
210	Group Insurance – Contracted Provider	24,236.77
220	Social Security Contributions	1,499,455.54
230	PSERS Retirement Contributions	6,646,134.25
240	Tuition Reimbursement	360,674.15
250	Unemployment Compensation	33,094.64
260	Workers' Compensation	87,380.02
270	Group Insurance – Self-Insurance	4,502,865.04
291	Other Retirement Plans	38,411.72
Total Personnel Services – Employee Benefits		\$13,192,252.13
300	<u>Purchased Professional and Technical Services</u>	
322	Professional Educational Services – Ius	(4,432.72)
329	Professional Educational Services – Other	28,228.91
330	Other Professional Services	3,515,135.15
340	Technical Services	90,612.08
350	Security / Safety Services	24,234.00
360	Employee Training and Development Services	74,900.61
390	Other Purchased Professional and Technical Services	9,237.01
Total Purchased Professional and Technical Services		\$3,737,915.04
400	<u>Purchased Property Services</u>	
410	Cleaning Services	2,038,431.00
420	Utility Services	223,065.86
430	Repairs and Maintenance Services	713,700.62
440	Rentals	80,637.67
450	Construction Services	21,342.50
460	Extermination Services	7,224.00
490	Other Purchased Property Services	701.66
Total Purchased Property Services		\$3,085,103.31
500	<u>Other Purchased Services</u>	
511	Student Transportation Services from Another LEA Within the State	42,673.93
513	Contracted Carriers	8,998,346.08
516	Student Transportation Services From the IU	122,227.42
519	Student Transportation Services From Other Sources	34,224.47
520	Insurance – General	176,956.00
522	Automotive Liability Insurance	74,511.00
523	General Property and Liability Insurance	325,784.00
529	Other Insurance	26,586.00
530	Communications	274,753.57
549	Other Advertising/Public Relations	11,625.56
550	Printing and Binding	10,820.89
580	Travel	18,952.01

LEA : 123467303 Spring-Ford Area SD

Printed 11/30/2022 4:22:25 PM

General Fund (10)

		<u>Total</u>
2000 Support Services		
500 <u>Other Purchased Services</u>		
595 IU Payments By Withholding		108,759.17
Total Other Purchased Services		\$10,226,220.10
600 <u>Supplies</u>		
610 General Supplies		1,092,599.00
620 Energy		1,596,247.66
630 Food		9,084.56
640 Books and Periodicals		53,730.55
650 Supplies & Fees – Technology Related		868,874.44
Total Supplies		\$3,620,536.21
700 <u>Property</u>		
756 Capitalized Technology Equipment – Original		637,601.00
758 Capitalized Technology Software - Original		10,135.20
762 Capitalized Equipment - Replacement		144,720.74
766 Capitalized Technology Equipment – Replacement		115,691.24
Total Property		\$908,148.18
800 <u>Other Objects</u>		
810 Dues and Fees		72,930.65
890 Miscellaneous Expenditures		(140.11)
Total Other Objects		\$72,790.54
Total 2000 Support Services		\$54,182,405.76

LEA : 123467303 Spring-Ford Area SD

Printed 11/30/2022 4:22:25 PM

General Fund (10)

2100 Support Services – Students	Elementary	Secondary	Federal	Total
100 <u>Personnel Services – Salaries</u>				
100 Personnel Services – Salaries	1,499,669.65	1,824,832.50	96,377.20	3,626,115.89
Total Personnel Services – Salaries	\$1,499,669.65	\$1,824,832.50	\$96,377.20	\$3,626,115.89
200 <u>Personnel Services – Employee Benefits</u>				
210 Group Insurance – Contracted Provider	1,135.95	1,686.38	57.75	3,073.18
220 Social Security Contributions	114,093.33	137,672.19	3,632.24	270,885.41
230 PSERS Retirement Contributions	532,304.40	646,095.98	16,837.13	1,267,689.83
250 Unemployment Compensation	65.87	90.43	3.30	171.31
260 Workers' Compensation	6,587.70	9,042.30	330.00	17,129.64
270 Group Insurance – Self-Insurance	336,773.37	500,620.40	8,106.61	922,104.16
291 Other Retirement Plans		393.84		393.84
Total Personnel Services – Employee Benefits	\$990,960.62	\$1,295,601.52	\$28,967.03	\$2,481,447.37
300 <u>Purchased Professional and Technical Services</u>				
329 Professional Educational Services – Other		192.00		192.00
330 Other Professional Services	459,059.60	425,835.29	298,147.67	1,183,175.34
Total Purchased Professional and Technical Services	\$459,059.60	\$426,027.29	\$298,147.67	\$1,183,367.34
500 <u>Other Purchased Services</u>				
530 Communications				895.70
550 Printing and Binding		78.43		78.43
580 Travel	21.02	20.20		217.77
Total Other Purchased Services	\$21.02	\$98.63		\$1,191.90
600 <u>Supplies</u>				
610 General Supplies	94,040.94	74,446.80	141.90	168,629.64
640 Books and Periodicals	648.19	1,258.86		1,907.05
650 Supplies & Fees – Technology Related	150.25	8,870.10	1,428.75	10,449.10
Total Supplies	\$94,839.38	\$84,575.76	\$1,570.65	\$180,985.79
800 <u>Other Objects</u>				
810 Dues and Fees		70.00		230.00
Total Other Objects		\$70.00		\$230.00
Total 2100 Support Services – Students	\$3,044,550.27	\$3,631,205.70	\$425,062.55	\$7,473,338.29

LEA : 123467303 Spring-Ford Area SD

Printed 11/30/2022 4:22:25 PM

General Fund (10)

2120 Guidance Services	Elementary	Secondary	Federal	Total
100 <u>Personnel Services – Salaries</u>				
100 Personnel Services – Salaries	1,128,454.55	1,468,174.86	96,377.20	2,693,006.61
Total Personnel Services – Salaries	\$1,128,454.55	\$1,468,174.86	\$96,377.20	\$2,693,006.61
200 <u>Personnel Services – Employee Benefits</u>				
210 Group Insurance – Contracted Provider	860.45	1,421.68	57.75	2,339.88
220 Social Security Contributions	86,237.18	110,908.46	3,632.24	200,777.88
230 PSERS Retirement Contributions	402,050.73	520,950.30	16,837.13	939,838.16
250 Unemployment Compensation	49.20	74.40	3.30	126.90
260 Workers' Compensation	4,920.00	7,440.00	330.00	12,690.00
270 Group Insurance – Self-Insurance	254,235.24	421,319.09	8,106.61	683,660.94
291 Other Retirement Plans		393.84		393.84
Total Personnel Services – Employee Benefits	\$748,352.80	\$1,062,507.77	\$28,967.03	\$1,839,827.60
300 <u>Purchased Professional and Technical Services</u>				
329 Professional Educational Services – Other		192.00		192.00
330 Other Professional Services	279,347.93	279,141.26	163,000.00	721,489.19
Total Purchased Professional and Technical Services	\$279,347.93	\$279,333.26	\$163,000.00	\$721,681.19
500 <u>Other Purchased Services</u>				
550 Printing and Binding		78.43		78.43
Total Other Purchased Services		\$78.43		\$78.43
600 <u>Supplies</u>				
610 General Supplies	1,998.92	72.00		2,070.92
640 Books and Periodicals	562.16	1,176.20		1,738.36
650 Supplies & Fees – Technology Related		8,870.10		8,870.10
Total Supplies	\$2,561.08	\$10,118.30		\$12,679.38
800 <u>Other Objects</u>				
810 Dues and Fees		70.00		70.00
Total Other Objects		\$70.00		\$70.00
Total 2120 Guidance Services	\$2,158,716.36	\$2,820,282.62	\$288,344.23	\$5,267,343.21

LEA : 123467303 Spring-Ford Area SD

Printed 11/30/2022 4:22:25 PM

General Fund (10)

2140 Psychological Services	Elementary	Secondary	Federal	Total
100 <u>Personnel Services – Salaries</u>				
100 Personnel Services – Salaries	371,215.10	356,657.64		727,872.74
Total Personnel Services – Salaries	\$371,215.10	\$356,657.64		\$727,872.74
200 <u>Personnel Services – Employee Benefits</u>				
210 Group Insurance – Contracted Provider	275.50	264.70		540.20
220 Social Security Contributions	27,856.15	26,763.73		54,619.88
230 PSERS Retirement Contributions	130,253.67	125,145.68		255,399.35
250 Unemployment Compensation	16.67	16.03		32.70
260 Workers' Compensation	1,667.70	1,602.30		3,270.00
270 Group Insurance – Self-Insurance	82,538.13	79,301.31		161,839.44
Total Personnel Services – Employee Benefits	\$242,607.82	\$233,093.75		\$475,701.57
300 <u>Purchased Professional and Technical Services</u>				
330 Other Professional Services	91,507.84	63,895.07	63,675.17	219,078.08
Total Purchased Professional and Technical Services	\$91,507.84	\$63,895.07	\$63,675.17	\$219,078.08
500 <u>Other Purchased Services</u>				
580 Travel	21.02	20.20		41.22
Total Other Purchased Services	\$21.02	\$20.20		\$41.22
600 <u>Supplies</u>				
610 General Supplies	92,042.02	74,374.80	141.90	166,558.72
640 Books and Periodicals	86.03	82.66		168.69
650 Supplies & Fees – Technology Related	150.25		1,428.75	1,579.00
Total Supplies	\$92,278.30	\$74,457.46	\$1,570.65	\$168,306.41
Total 2140 Psychological Services	\$797,630.08	\$728,124.12	\$65,245.82	\$1,591,000.02

LEA : 123467303 Spring-Ford Area SD

Printed 11/30/2022 4:22:25 PM

General Fund (10)

2150 Speech Pathology and Audiology Services	<u>Elementary</u>	<u>Secondary</u>	<u>Federal</u>	<u>Total</u>
300 <u>Purchased Professional and Technical Services</u>				
330 Other Professional Services	84,383.12	80,168.23	3,392.50	167,943.85
Total Purchased Professional and Technical Services	\$84,383.12	\$80,168.23	\$3,392.50	\$167,943.85
Total 2150 Speech Pathology and Audiology Services	\$84,383.12	\$80,168.23	\$3,392.50	\$167,943.85

LEA : 123467303 Spring-Ford Area SD

Printed 11/30/2022 4:22:25 PM

General Fund (10)

2160 Social Work Services

	<u>Elementary</u>	<u>Secondary</u>	<u>Federal</u>	<u>Total</u>
100 <u>Personnel Services – Salaries</u>				
100 Personnel Services – Salaries				107,619.88
Total Personnel Services – Salaries				\$107,619.88
200 <u>Personnel Services – Employee Benefits</u>				
210 Group Insurance – Contracted Provider				57.75
220 Social Security Contributions				8,088.30
230 PSERS Retirement Contributions				37,602.44
250 Unemployment Compensation				3.30
260 Workers' Compensation				330.00
270 Group Insurance – Self-Insurance				21,972.09
Total Personnel Services – Employee Benefits				\$68,053.88
300 <u>Purchased Professional and Technical Services</u>				
330 Other Professional Services			68,080.00	68,212.78
Total Purchased Professional and Technical Services			\$68,080.00	\$68,212.78
500 <u>Other Purchased Services</u>				
530 Communications				894.64
580 Travel				176.55
Total Other Purchased Services				\$1,071.19
Total 2160 Social Work Services			\$68,080.00	\$244,957.73

LEA : 123467303 Spring-Ford Area SD

Printed 11/30/2022 4:22:25 PM

General Fund (10)

2170 Student Accounting Services

	<u>Elementary</u>	<u>Secondary</u>	<u>Federal</u>	<u>Total</u>
100 <u>Personnel Services – Salaries</u>				
100 Personnel Services – Salaries				97,616.66
Total Personnel Services – Salaries				\$97,616.66
200 <u>Personnel Services – Employee Benefits</u>				
210 Group Insurance – Contracted Provider				135.35
220 Social Security Contributions				7,399.35
230 PSERS Retirement Contributions				34,849.88
250 Unemployment Compensation				8.41
260 Workers' Compensation				839.64
270 Group Insurance – Self-Insurance				54,631.69
Total Personnel Services – Employee Benefits				\$97,864.32
500 <u>Other Purchased Services</u>				
530 Communications				1.06
Total Other Purchased Services				\$1.06
800 <u>Other Objects</u>				
810 Dues and Fees				160.00
Total Other Objects				\$160.00
Total 2170 Student Accounting Services				\$195,642.04

LEA : 123467303 Spring-Ford Area SD

Printed 11/30/2022 4:22:25 PM

General Fund (10)

2190 Other Student Services	<u>Elementary</u>	<u>Secondary</u>	<u>Federal</u>	<u>Total</u>
300 <u>Purchased Professional and Technical Services</u>				
330 Other Professional Services	3,820.71	2,630.73		6,451.44
Total Purchased Professional and Technical Services	\$3,820.71	\$2,630.73		\$6,451.44
Total 2190 Other Student Services	\$3,820.71	\$2,630.73		\$6,451.44

LEA : 123467303 Spring-Ford Area SD

Printed 11/30/2022 4:22:25 PM

General Fund (10)

2200 Support Services – Instructional Staff	Elementary	Secondary	Federal	Total
100 Personnel Services – Salaries				
100 Personnel Services – Salaries	2,363,611.11	1,403,509.90	402,030.47	4,169,151.48
Total Personnel Services – Salaries	\$2,363,611.11	\$1,403,509.90	\$402,030.47	\$4,169,151.48
200 Personnel Services – Employee Benefits				
210 Group Insurance – Contracted Provider	2,231.65	1,667.55	47.25	3,946.45
220 Social Security Contributions	214,932.83	141,056.97	15,107.78	371,097.58
230 PSERS Retirement Contributions	828,313.28	490,108.82	70,275.24	1,388,697.34
240 Tuition Reimbursement	102,567.00	124,669.63		227,236.63
250 Unemployment Compensation	88.35	52.80	2.70	143.85
260 Workers' Compensation	8,834.70	5,280.30	270.00	14,385.00
270 Group Insurance – Self-Insurance	438,146.42	231,034.17	12,983.31	682,163.90
Total Personnel Services – Employee Benefits	\$1,595,114.23	\$993,870.24	\$98,686.28	\$2,687,670.75
300 Purchased Professional and Technical Services				
329 Professional Educational Services – Other	12,168.51	4,424.52	10,000.00	26,593.03
330 Other Professional Services	36,485.00		12,553.20	49,038.20
360 Employee Training and Development Services	10,274.97	24,195.10	12,991.56	47,461.63
Total Purchased Professional and Technical Services	\$58,928.48	\$28,619.62	\$35,544.76	\$123,092.86
400 Purchased Property Services				
430 Repairs and Maintenance Services	1,533.37	1,235.58		2,768.95
Total Purchased Property Services	\$1,533.37	\$1,235.58		\$2,768.95
500 Other Purchased Services				
530 Communications	5,131.12	7,978.10		13,109.22
550 Printing and Binding	30.19	29.00		59.19
580 Travel	2,215.23	3,648.39		5,863.62
Total Other Purchased Services	\$7,376.54	\$11,655.49		\$19,032.03
600 Supplies				
610 General Supplies	3,519.04	2,779.77		6,298.81
630 Food	1,648.27	1,583.63		3,231.90
640 Books and Periodicals	27,948.38	11,962.44	4,498.00	44,408.82
650 Supplies & Fees – Technology Related	91,991.70	43,198.22		135,189.92
Total Supplies	\$125,107.39	\$59,524.06	\$4,498.00	\$189,129.45
800 Other Objects				
810 Dues and Fees	136.17	180.83		317.00
Total Other Objects	\$136.17	\$180.83		\$317.00
Total 2200 Support Services – Instructional Staff	\$4,151,807.29	\$2,498,595.72	\$540,759.51	\$7,191,162.52

LEA : 123467303 Spring-Ford Area SD

Printed 11/30/2022 4:22:25 PM

General Fund (10)

2230 Educational Television Services

	<u>Elementary</u>	<u>Secondary</u>	<u>Federal</u>	<u>Total</u>
100 <u>Personnel Services – Salaries</u>				
100 Personnel Services – Salaries		100,489.21		100,489.21
Total Personnel Services – Salaries		\$100,489.21		\$100,489.21
200 <u>Personnel Services – Employee Benefits</u>				
210 Group Insurance – Contracted Provider		200.82		200.82
220 Social Security Contributions		7,492.10		7,492.10
230 PSERS Retirement Contributions		35,110.84		35,110.84
250 Unemployment Compensation		7.20		7.20
260 Workers' Compensation		720.00		720.00
270 Group Insurance – Self-Insurance		36,019.54		36,019.54
Total Personnel Services – Employee Benefits		\$79,550.50		\$79,550.50
400 <u>Purchased Property Services</u>				
430 Repairs and Maintenance Services		520.00		520.00
Total Purchased Property Services		\$520.00		\$520.00
500 <u>Other Purchased Services</u>				
530 Communications		2,215.87		2,215.87
580 Travel		33.69		33.69
Total Other Purchased Services		\$2,249.56		\$2,249.56
600 <u>Supplies</u>				
650 Supplies & Fees – Technology Related		10,740.37		10,740.37
Total Supplies		\$10,740.37		\$10,740.37
800 <u>Other Objects</u>				
810 Dues and Fees		50.00		50.00
Total Other Objects		\$50.00		\$50.00
Total 2230 Educational Television Services		\$193,599.64		\$193,599.64

LEA : 123467303 Spring-Ford Area SD

Printed 11/30/2022 4:22:25 PM

General Fund (10)

2250 School Library Services	Elementary	Secondary	Federal	Total
100 <u>Personnel Services – Salaries</u>				
100 Personnel Services – Salaries	870,847.78	498,111.32		1,368,959.10
Total Personnel Services – Salaries	\$870,847.78	\$498,111.32		\$1,368,959.10
200 <u>Personnel Services – Employee Benefits</u>				
210 Group Insurance – Contracted Provider	548.68	288.75		837.43
220 Social Security Contributions	65,318.92	37,627.00		102,945.92
230 PSERS Retirement Contributions	304,688.40	172,951.74		477,640.14
250 Unemployment Compensation	31.95	16.50		48.45
260 Workers' Compensation	3,195.00	1,650.00		4,845.00
270 Group Insurance – Self-Insurance	189,189.17	75,316.98		264,506.15
Total Personnel Services – Employee Benefits	\$562,972.12	\$287,850.97		\$850,823.09
300 <u>Purchased Professional and Technical Services</u>				
329 Professional Educational Services – Other	10,797.63	3,107.40		13,905.03
Total Purchased Professional and Technical Services	\$10,797.63	\$3,107.40		\$13,905.03
400 <u>Purchased Property Services</u>				
430 Repairs and Maintenance Services	1,533.37	715.58		2,248.95
Total Purchased Property Services	\$1,533.37	\$715.58		\$2,248.95
600 <u>Supplies</u>				
610 General Supplies	1,675.28	862.19		2,537.47
640 Books and Periodicals	27,018.56	11,069.08		38,087.64
650 Supplies & Fees – Technology Related	18,646.95	22,293.32		40,940.27
Total Supplies	\$47,340.79	\$34,224.59		\$81,565.38
Total 2250 School Library Services	\$1,493,491.69	\$824,009.86		\$2,317,501.55

LEA : 123467303 Spring-Ford Area SD

Printed 11/30/2022 4:22:25 PM

General Fund (10)

2260 Instruction and Curriculum Development Services	<u>Elementary</u>	<u>Secondary</u>	<u>Federal</u>	<u>Total</u>
100 <u>Personnel Services – Salaries</u>				
100 Personnel Services – Salaries	542,387.84	546,587.42	304,620.47	1,393,595.73
Total Personnel Services – Salaries	\$542,387.84	\$546,587.42	\$304,620.47	\$1,393,595.73
200 <u>Personnel Services – Employee Benefits</u>				
210 Group Insurance – Contracted Provider	1,052.29	1,015.91	47.25	2,115.45
220 Social Security Contributions	46,977.71	47,013.41	11,451.17	105,442.29
230 PSERS Retirement Contributions	213,896.41	213,184.43	53,217.13	480,297.97
250 Unemployment Compensation	20.36	19.84	2.70	42.90
260 Workers' Compensation	2,035.80	1,984.20	270.00	4,290.00
270 Group Insurance – Self-Insurance	109,200.86	91,265.69	12,983.31	213,449.86
Total Personnel Services – Employee Benefits	\$373,183.43	\$354,483.48	\$77,971.56	\$805,638.47
300 <u>Purchased Professional and Technical Services</u>				
330 Other Professional Services	36,485.00			36,485.00
Total Purchased Professional and Technical Services	\$36,485.00			\$36,485.00
500 <u>Other Purchased Services</u>				
530 Communications	5,131.12	5,762.23		10,893.35
550 Printing and Binding	30.19	29.00		59.19
580 Travel	184.67	177.42		362.09
Total Other Purchased Services	\$5,345.98	\$5,968.65		\$11,314.63
600 <u>Supplies</u>				
610 General Supplies	1,843.76	1,917.58		3,761.34
630 Food	302.18	290.32		592.50
640 Books and Periodicals	452.61	434.87		887.48
650 Supplies & Fees – Technology Related	73,344.75	10,164.53		83,509.28
Total Supplies	\$75,943.30	\$12,807.30		\$88,750.60
800 <u>Other Objects</u>				
810 Dues and Fees	136.17	130.83		267.00
Total Other Objects	\$136.17	\$130.83		\$267.00
Total 2260 Instruction and Curriculum Development Services	\$1,033,481.72	\$919,977.68	\$382,592.03	\$2,336,051.43

LEA : 123467303 Spring-Ford Area SD

Printed 11/30/2022 4:22:25 PM

General Fund (10)

2270 Instructional Staff Professional Development Services	Elementary	Secondary	Federal	Total
100 <u>Personnel Services – Salaries</u>				
100 Personnel Services – Salaries	950,375.49	258,321.95	97,410.00	1,306,107.44
Total Personnel Services – Salaries	\$950,375.49	\$258,321.95	\$97,410.00	\$1,306,107.44
200 <u>Personnel Services – Employee Benefits</u>				
210 Group Insurance – Contracted Provider	630.68	162.07		792.75
220 Social Security Contributions	102,636.20	48,924.46	3,656.61	155,217.27
230 PSERS Retirement Contributions	309,728.47	68,861.81	17,058.11	395,648.39
240 Tuition Reimbursement	102,567.00	124,669.63		227,236.63
250 Unemployment Compensation	36.04	9.26		45.30
260 Workers' Compensation	3,603.90	926.10		4,530.00
270 Group Insurance – Self-Insurance	139,756.39	28,431.96		168,188.35
Total Personnel Services – Employee Benefits	\$658,958.68	\$271,985.29	\$20,714.72	\$951,658.69
300 <u>Purchased Professional and Technical Services</u>				
329 Professional Educational Services – Other	1,370.88	1,317.12	10,000.00	12,688.00
360 Employee Training and Development Services	10,274.97	24,195.10	12,991.56	47,461.63
Total Purchased Professional and Technical Services	\$11,645.85	\$25,512.22	\$22,991.56	\$60,149.63
500 <u>Other Purchased Services</u>				
580 Travel	2,030.56	3,437.28		5,467.84
Total Other Purchased Services	\$2,030.56	\$3,437.28		\$5,467.84
600 <u>Supplies</u>				
630 Food	1,346.09	1,293.31		2,639.40
640 Books and Periodicals	477.21	458.49	4,498.00	5,433.70
Total Supplies	\$1,823.30	\$1,751.80	\$4,498.00	\$8,073.10
Total 2270 Instructional Staff Professional Development Services	\$1,624,833.88	\$561,008.54	\$145,614.28	\$2,331,456.70

LEA : 123467303 Spring-Ford Area SD

Printed 11/30/2022 4:22:25 PM

General Fund (10)

2280 Nonpublic Support Services

	<u>Elementary</u>	<u>Secondary</u>	<u>Federal</u>	<u>Total</u>
300 <u>Purchased Professional and Technical Services</u>				
330 Other Professional Services			12,553.20	12,553.20
Total Purchased Professional and Technical Services			\$12,553.20	\$12,553.20
Total 2280 Nonpublic Support Services			\$12,553.20	\$12,553.20

LEA : 123467303 Spring-Ford Area SD

Printed 11/30/2022 4:22:25 PM

General Fund (10)

2300 Support Services – Administration	Elementary	Secondary	Federal	Total
100 Personnel Services – Salaries				
100 Personnel Services – Salaries	2,059,085.64	1,842,006.65		4,658,624.30
Total Personnel Services – Salaries	\$2,059,085.64	\$1,842,006.65		\$4,658,624.30
200 Personnel Services – Employee Benefits				
210 Group Insurance – Contracted Provider	3,656.06	3,362.67		8,322.38
220 Social Security Contributions	152,484.30	135,002.88		341,150.57
230 PSERS Retirement Contributions	714,341.16	628,762.01		1,588,955.63
250 Unemployment Compensation	91.50	72.60		184.50
260 Workers' Compensation	9,145.20	7,264.80		18,450.00
270 Group Insurance – Self-Insurance	506,943.69	330,851.37		946,700.53
291 Other Retirement Plans		6,249.00		21,556.88
Total Personnel Services – Employee Benefits	\$1,386,661.91	\$1,111,565.33		\$2,925,320.49
300 Purchased Professional and Technical Services				
330 Other Professional Services				597,491.71
340 Technical Services				4,081.99
350 Security / Safety Services				1,702.00
390 Other Purchased Professional and Technical Services				57.96
Total Purchased Professional and Technical Services				\$603,333.66
400 Purchased Property Services				
440 Rentals				1,125.00
Total Purchased Property Services				\$1,125.00
500 Other Purchased Services				
520 Insurance – General				176,878.00
530 Communications	5,447.10	5,976.24		19,944.22
549 Other Advertising/Public Relations				1,935.80
550 Printing and Binding		178.17		9,193.11
580 Travel	345.91			1,396.55
Total Other Purchased Services	\$5,793.01	\$6,154.41		\$209,347.68
600 Supplies				
610 General Supplies	14,471.50	6,088.70		55,740.92
630 Food		1,318.69		5,852.66
640 Books and Periodicals	3,609.39	88.81		5,798.39
650 Supplies & Fees – Technology Related				3,243.71
Total Supplies	\$18,080.89	\$7,496.20		\$70,635.68
800 Other Objects				
810 Dues and Fees	5,181.50	5,240.50		44,462.43
Total Other Objects	\$5,181.50	\$5,240.50		\$44,462.43
Total 2300 Support Services – Administration	\$3,474,802.95	\$2,972,463.09		\$8,512,849.24

LEA : 123467303 Spring-Ford Area SD

Printed 11/30/2022 4:22:25 PM

General Fund (10)

2310 Board Services

	<u>Elementary</u>	<u>Secondary</u>	<u>Federal</u>	<u>Total</u>
100 <u>Personnel Services – Salaries</u>				
100 Personnel Services – Salaries				185.74
Total Personnel Services – Salaries				\$185.74
200 <u>Personnel Services – Employee Benefits</u>				
220 Social Security Contributions				14.21
230 PSERS Retirement Contributions				64.90
Total Personnel Services – Employee Benefits				\$79.11
500 <u>Other Purchased Services</u>				
520 Insurance – General				109,649.00
530 Communications				0.53
549 Other Advertising/Public Relations				1,491.06
Total Other Purchased Services				\$111,140.59
600 <u>Supplies</u>				
610 General Supplies				269.99
630 Food				163.50
640 Books and Periodicals				45.00
Total Supplies				\$478.49
800 <u>Other Objects</u>				
810 Dues and Fees				15,840.42
Total Other Objects				\$15,840.42
Total 2310 Board Services				\$127,724.35

LEA : 123467303 Spring-Ford Area SD

Printed 11/30/2022 4:22:25 PM

General Fund (10)				
2330 Tax Assessment and Collection Services	<u>Elementary</u>	<u>Secondary</u>	<u>Federal</u>	<u>Total</u>
100 <u>Personnel Services – Salaries</u>				
100 Personnel Services – Salaries				48,691.30
Total Personnel Services – Salaries				\$48,691.30
200 <u>Personnel Services – Employee Benefits</u>				
220 Social Security Contributions				3,725.10
Total Personnel Services – Employee Benefits				\$3,725.10
300 <u>Purchased Professional and Technical Services</u>				
330 Other Professional Services				260,384.31
340 Technical Services				4,081.99
390 Other Purchased Professional and Technical Services				57.96
Total Purchased Professional and Technical Services				\$264,524.26
500 <u>Other Purchased Services</u>				
520 Insurance – General				67,229.00
530 Communications				7,763.22
550 Printing and Binding				655.44
Total Other Purchased Services				\$75,647.66
600 <u>Supplies</u>				
610 General Supplies				2,383.05
650 Supplies & Fees – Technology Related				283.33
Total Supplies				\$2,666.38
Total 2330 Tax Assessment and Collection Services				\$395,254.70

LEA : 123467303 Spring-Ford Area SD

Printed 11/30/2022 4:22:25 PM

General Fund (10)

2350 Legal and Accounting Services	<u>Elementary</u>	<u>Secondary</u>	<u>Federal</u>	<u>Total</u>
300 <u>Purchased Professional and Technical Services</u>				
330 Other Professional Services				337,107.40
Total Purchased Professional and Technical Services				\$337,107.40
Total 2350 Legal and Accounting Services				\$337,107.40

LEA : 123467303 Spring-Ford Area SD

Printed 11/30/2022 4:22:25 PM

General Fund (10)

2360 Office of the Superintendent / Executive Director Services	<u>Elementary</u>	<u>Secondary</u>	<u>Federal</u>	<u>Total</u>
100 <u>Personnel Services – Salaries</u>				
100 Personnel Services – Salaries				611,928.97
Total Personnel Services – Salaries				\$611,928.97
200 <u>Personnel Services – Employee Benefits</u>				
210 Group Insurance – Contracted Provider				1,072.29
220 Social Security Contributions				42,548.32
230 PSERS Retirement Contributions				212,340.91
250 Unemployment Compensation				16.80
260 Workers' Compensation				1,680.00
270 Group Insurance – Self-Insurance				98,641.85
291 Other Retirement Plans				15,307.88
Total Personnel Services – Employee Benefits				\$371,608.05
500 <u>Other Purchased Services</u>				
530 Communications	1,070.65	1,028.68		2,099.33
549 Other Advertising/Public Relations				84.80
550 Printing and Binding				81.57
580 Travel				1,025.64
Total Other Purchased Services	\$1,070.65	\$1,028.68		\$3,291.34
600 <u>Supplies</u>				
610 General Supplies				602.03
630 Food				2,530.67
640 Books and Periodicals				2,055.19
650 Supplies & Fees – Technology Related				372.00
Total Supplies				\$5,559.89
800 <u>Other Objects</u>				
810 Dues and Fees				15,679.00
Total Other Objects				\$15,679.00
Total 2360 Office of the Superintendent / Executive Director Services	\$1,070.65	\$1,028.68		\$1,008,067.25

LEA : 123467303 Spring-Ford Area SD

Printed 11/30/2022 4:22:25 PM

General Fund (10)

2370 Community Relations Services

	<u>Elementary</u>	<u>Secondary</u>	<u>Federal</u>	<u>Total</u>
100 <u>Personnel Services – Salaries</u>				
100 Personnel Services – Salaries				96,726.00
Total Personnel Services – Salaries				\$96,726.00
200 <u>Personnel Services – Employee Benefits</u>				
210 Group Insurance – Contracted Provider				231.36
220 Social Security Contributions				7,375.76
230 PSERS Retirement Contributions				33,446.65
250 Unemployment Compensation				3.60
260 Workers' Compensation				360.00
270 Group Insurance – Self-Insurance				10,263.62
Total Personnel Services – Employee Benefits				\$51,680.99
500 <u>Other Purchased Services</u>				
530 Communications				757.13
549 Other Advertising/Public Relations				359.94
550 Printing and Binding				4,144.46
580 Travel				25.00
Total Other Purchased Services				\$5,286.53
600 <u>Supplies</u>				
610 General Supplies				7,025.62
650 Supplies & Fees – Technology Related				2,588.38
Total Supplies				\$9,614.00
800 <u>Other Objects</u>				
810 Dues and Fees				340.00
Total Other Objects				\$340.00
Total 2370 Community Relations Services				\$163,647.52

LEA : 123467303 Spring-Ford Area SD

Printed 11/30/2022 4:22:25 PM

General Fund (10)

2380 Office of the Principal Services	Elementary	Secondary	Federal	Total
100 <u>Personnel Services – Salaries</u>				
100 Personnel Services – Salaries	2,059,085.64	1,842,006.65		3,901,092.29
Total Personnel Services – Salaries	\$2,059,085.64	\$1,842,006.65		\$3,901,092.29
200 <u>Personnel Services – Employee Benefits</u>				
210 Group Insurance – Contracted Provider	3,656.06	3,362.67		7,018.73
220 Social Security Contributions	152,484.30	135,002.88		287,487.18
230 PSERS Retirement Contributions	714,341.16	628,762.01		1,343,103.17
250 Unemployment Compensation	91.50	72.60		164.10
260 Workers' Compensation	9,145.20	7,264.80		16,410.00
270 Group Insurance – Self-Insurance	506,943.69	330,851.37		837,795.06
291 Other Retirement Plans		6,249.00		6,249.00
Total Personnel Services – Employee Benefits	\$1,386,661.91	\$1,111,565.33		\$2,498,227.24
500 <u>Other Purchased Services</u>				
530 Communications	4,376.45	4,947.56		9,324.01
550 Printing and Binding		178.17		178.17
580 Travel	345.91			345.91
Total Other Purchased Services	\$4,722.36	\$5,125.73		\$9,848.09
600 <u>Supplies</u>				
610 General Supplies	14,471.50	6,088.70		20,560.20
630 Food		1,318.69		1,318.69
640 Books and Periodicals	3,609.39	88.81		3,698.20
Total Supplies	\$18,080.89	\$7,496.20		\$25,577.09
800 <u>Other Objects</u>				
810 Dues and Fees	5,181.50	5,240.50		10,422.00
Total Other Objects	\$5,181.50	\$5,240.50		\$10,422.00
Total 2380 Office of the Principal Services	\$3,473,732.30	\$2,971,434.41		\$6,445,166.71

LEA : 123467303 Spring-Ford Area SD

Printed 11/30/2022 4:22:25 PM

General Fund (10)				
2390 Other Administration Services	<u>Elementary</u>	<u>Secondary</u>	<u>Federal</u>	<u>Total</u>
300 <u>Purchased Professional and Technical Services</u>				
350 Security / Safety Services				1,702.00
Total Purchased Professional and Technical Services				\$1,702.00
400 <u>Purchased Property Services</u>				
440 Rentals				1,125.00
Total Purchased Property Services				\$1,125.00
500 <u>Other Purchased Services</u>				
550 Printing and Binding				4,133.47
Total Other Purchased Services				\$4,133.47
600 <u>Supplies</u>				
610 General Supplies				24,900.03
630 Food				1,839.80
Total Supplies				\$26,739.83
800 <u>Other Objects</u>				
810 Dues and Fees				2,181.01
Total Other Objects				\$2,181.01
Total 2390 Other Administration Services				\$35,881.31

LEA : 123467303 Spring-Ford Area SD

Printed 11/30/2022 4:22:25 PM

General Fund (10)

2400 Support Services – Pupil Health	Elementary	Secondary	Federal	Total
100 <u>Personnel Services – Salaries</u>				
100 Personnel Services – Salaries			12,362.79	959,051.48
Total Personnel Services – Salaries			\$12,362.79	\$959,051.48
200 <u>Personnel Services – Employee Benefits</u>				
210 Group Insurance – Contracted Provider				939.20
220 Social Security Contributions			462.75	71,258.47
230 PSERS Retirement Contributions			2,219.29	340,065.92
250 Unemployment Compensation				61.92
260 Workers' Compensation				6,156.00
270 Group Insurance – Self-Insurance				345,122.65
Total Personnel Services – Employee Benefits			\$2,682.04	\$763,604.16
300 <u>Purchased Professional and Technical Services</u>				
322 Professional Educational Services – Ius				(4,432.72)
329 Professional Educational Services – Other				1,443.88
330 Other Professional Services			2,513.67	1,498,743.16
Total Purchased Professional and Technical Services			\$2,513.67	\$1,495,754.32
400 <u>Purchased Property Services</u>				
430 Repairs and Maintenance Services				117.70
Total Purchased Property Services				\$117.70
500 <u>Other Purchased Services</u>				
530 Communications				25.75
Total Other Purchased Services				\$25.75
600 <u>Supplies</u>				
610 General Supplies			2,834.30	35,530.04
Total Supplies			\$2,834.30	\$35,530.04
Total 2400 Support Services – Pupil Health			\$20,392.80	\$3,254,083.45

LEA : 123467303 Spring-Ford Area SD

Printed 11/30/2022 4:22:25 PM

General Fund (10)

2420 Medical Services

Elementary Secondary Federal Total

300 Purchased Professional and Technical Services

322 Professional Educational Services – lus (4,432.72)

330 Other Professional Services 2,513.67 1,073,796.60

Total Purchased Professional and Technical Services \$2,513.67 \$1,069,363.88

600 Supplies

610 General Supplies 2,834.30 8,974.29

Total Supplies \$2,834.30 \$8,974.29

Total 2420 Medical Services \$5,347.97 \$1,078,338.17

LEA : 123467303 Spring-Ford Area SD

Printed 11/30/2022 4:22:25 PM

General Fund (10)				
2430 Dental Services	<u>Elementary</u>	<u>Secondary</u>	<u>Federal</u>	<u>Total</u>
300 <u>Purchased Professional and Technical Services</u>				
330 Other Professional Services				1,015.00
Total Purchased Professional and Technical Services				\$1,015.00
600 <u>Supplies</u>				
610 General Supplies				733.05
Total Supplies				\$733.05
Total 2430 Dental Services				\$1,748.05

LEA : 123467303 Spring-Ford Area SD

Printed 11/30/2022 4:22:25 PM

General Fund (10)

2440 Nursing Services

	<u>Elementary</u>	<u>Secondary</u>	<u>Federal</u>	<u>Total</u>
100 <u>Personnel Services – Salaries</u>				
100 Personnel Services – Salaries			12,362.79	903,201.40
Total Personnel Services – Salaries			\$12,362.79	\$903,201.40
200 <u>Personnel Services – Employee Benefits</u>				
210 Group Insurance – Contracted Provider				881.45
220 Social Security Contributions			462.75	67,234.19
230 PSERS Retirement Contributions			2,219.29	320,551.88
250 Unemployment Compensation				58.62
260 Workers' Compensation				5,826.00
270 Group Insurance – Self-Insurance				323,150.56
Total Personnel Services – Employee Benefits			\$2,682.04	\$717,702.70
300 <u>Purchased Professional and Technical Services</u>				
329 Professional Educational Services – Other				1,443.88
330 Other Professional Services				423,931.56
Total Purchased Professional and Technical Services				\$425,375.44
400 <u>Purchased Property Services</u>				
430 Repairs and Maintenance Services				117.70
Total Purchased Property Services				\$117.70
500 <u>Other Purchased Services</u>				
530 Communications				25.75
Total Other Purchased Services				\$25.75
600 <u>Supplies</u>				
610 General Supplies				21,252.20
Total Supplies				\$21,252.20
Total 2440 Nursing Services			\$15,044.83	\$2,067,675.19

LEA : 123467303 Spring-Ford Area SD

Printed 11/30/2022 4:22:25 PM

General Fund (10)

2450 Nonpublic Health Services	<u>Elementary</u>	<u>Secondary</u>	<u>Federal</u>	<u>Total</u>
100 <u>Personnel Services – Salaries</u>				
100 Personnel Services – Salaries				55,850.08
Total Personnel Services – Salaries				\$55,850.08
200 <u>Personnel Services – Employee Benefits</u>				
210 Group Insurance – Contracted Provider				57.75
220 Social Security Contributions				4,024.28
230 PSERS Retirement Contributions				19,514.04
250 Unemployment Compensation				3.30
260 Workers' Compensation				330.00
270 Group Insurance – Self-Insurance				21,972.09
Total Personnel Services – Employee Benefits				\$45,901.46
Total 2450 Nonpublic Health Services				\$101,751.54

LEA : 123467303 Spring-Ford Area SD

Printed 11/30/2022 4:22:25 PM

General Fund (10)				
2490 Other Health Services	<u>Elementary</u>	<u>Secondary</u>	<u>Federal</u>	<u>Total</u>
600 <u>Supplies</u>				
610 General Supplies				4,570.50
Total Supplies				\$4,570.50
Total 2490 Other Health Services				\$4,570.50

LEA : 123467303 Spring-Ford Area SD

Printed 11/30/2022 4:22:25 PM

General Fund (10)					
2500 Support Services – Business		<u>Elementary</u>	<u>Secondary</u>	<u>Federal</u>	<u>Total</u>
<u>100 Personnel Services – Salaries</u>					
100 Personnel Services – Salaries				5,594.80	697,913.43
Total Personnel Services – Salaries				\$5,594.80	\$697,913.43
<u>200 Personnel Services – Employee Benefits</u>					
210 Group Insurance – Contracted Provider				10.38	1,361.43
220 Social Security Contributions				210.47	50,435.27
230 PSERS Retirement Contributions				977.40	243,453.87
250 Unemployment Compensation				0.59	37.48
260 Workers' Compensation				60.36	3,749.38
270 Group Insurance – Self-Insurance				3,502.29	178,212.03
Total Personnel Services – Employee Benefits				\$4,761.49	\$477,249.46
<u>300 Purchased Professional and Technical Services</u>					
330 Other Professional Services				49,531.21	70,642.46
390 Other Purchased Professional and Technical Services					862.93
Total Purchased Professional and Technical Services				\$49,531.21	\$71,505.39
<u>400 Purchased Property Services</u>					
430 Repairs and Maintenance Services					4,544.76
440 Rentals					16,334.16
Total Purchased Property Services					\$20,878.92
<u>500 Other Purchased Services</u>					
520 Insurance – General					78.00
530 Communications					11,849.77
549 Other Advertising/Public Relations					488.14
550 Printing and Binding					440.42
580 Travel					1,463.08
Total Other Purchased Services					\$14,319.41
<u>600 Supplies</u>					
610 General Supplies					10,141.09
650 Supplies & Fees – Technology Related					16,082.91
Total Supplies					\$26,224.00
<u>800 Other Objects</u>					
810 Dues and Fees					24,253.22
890 Miscellaneous Expenditures					(140.11)
Total Other Objects					\$24,113.11
Total 2500 Support Services – Business				\$59,887.50	\$1,332,203.72

LEA : 123467303 Spring-Ford Area SD

Printed 11/30/2022 4:22:25 PM

General Fund (10)

2510 Fiscal Services

	<u>Elementary</u>	<u>Secondary</u>	<u>Federal</u>	<u>Total</u>
100 <u>Personnel Services – Salaries</u>				
100 Personnel Services – Salaries			5,594.80	643,784.29
Total Personnel Services – Salaries			\$5,594.80	\$643,784.29
200 <u>Personnel Services – Employee Benefits</u>				
210 Group Insurance – Contracted Provider			10.38	1,225.44
220 Social Security Contributions			210.47	46,355.44
230 PSERS Retirement Contributions			977.40	225,279.97
250 Unemployment Compensation			0.59	32.08
260 Workers' Compensation			60.36	3,209.38
270 Group Insurance – Self-Insurance			3,502.29	172,471.33
Total Personnel Services – Employee Benefits			\$4,761.49	\$448,573.64
300 <u>Purchased Professional and Technical Services</u>				
330 Other Professional Services			49,531.21	63,392.46
Total Purchased Professional and Technical Services			\$49,531.21	\$63,392.46
400 <u>Purchased Property Services</u>				
430 Repairs and Maintenance Services				395.00
Total Purchased Property Services				\$395.00
500 <u>Other Purchased Services</u>				
530 Communications				2,284.77
549 Other Advertising/Public Relations				488.14
580 Travel				1,463.08
Total Other Purchased Services				\$4,235.99
600 <u>Supplies</u>				
610 General Supplies				176.70
650 Supplies & Fees – Technology Related				10,354.01
Total Supplies				\$10,530.71
800 <u>Other Objects</u>				
810 Dues and Fees				16,145.07
Total Other Objects				\$16,145.07
Total 2510 Fiscal Services			\$59,887.50	\$1,187,057.16

LEA : 123467303 Spring-Ford Area SD

Printed 11/30/2022 4:22:25 PM

General Fund (10)

2511 Supervision of Fiscal Services - Head of Component

	<u>Elementary</u>	<u>Secondary</u>	<u>Federal</u>	<u>Total</u>
100 <u>Personnel Services – Salaries</u>				
100 Personnel Services – Salaries				190,193.00
Total Personnel Services – Salaries				\$190,193.00
200 <u>Personnel Services – Employee Benefits</u>				
210 Group Insurance – Contracted Provider				298.50
220 Social Security Contributions				12,176.45
230 PSERS Retirement Contributions				66,104.16
250 Unemployment Compensation				3.60
260 Workers' Compensation				360.00
270 Group Insurance – Self-Insurance				24,658.35
Total Personnel Services – Employee Benefits				\$103,601.06
500 <u>Other Purchased Services</u>				
530 Communications				577.26
580 Travel				293.61
Total Other Purchased Services				\$870.87
800 <u>Other Objects</u>				
810 Dues and Fees				940.00
Total Other Objects				\$940.00
Total 2511 Supervision of Fiscal Services - Head of Component				\$295,604.93

LEA : 123467303 Spring-Ford Area SD

Printed 11/30/2022 4:22:25 PM

General Fund (10)

2512 Budgeting Services

	<u>Elementary</u>	<u>Secondary</u>	<u>Federal</u>	<u>Total</u>
100 <u>Personnel Services – Salaries</u>				
100 Personnel Services – Salaries				62,226.00
Total Personnel Services – Salaries				\$62,226.00
200 <u>Personnel Services – Employee Benefits</u>				
210 Group Insurance – Contracted Provider				148.84
220 Social Security Contributions				4,680.43
230 PSERS Retirement Contributions				21,567.23
250 Unemployment Compensation				1.80
260 Workers' Compensation				180.00
270 Group Insurance – Self-Insurance				11,561.67
Total Personnel Services – Employee Benefits				\$38,139.97
500 <u>Other Purchased Services</u>				
530 Communications				565.08
549 Other Advertising/Public Relations				488.14
580 Travel				9.77
Total Other Purchased Services				\$1,062.99
600 <u>Supplies</u>				
650 Supplies & Fees – Technology Related				9,554.01
Total Supplies				\$9,554.01
800 <u>Other Objects</u>				
810 Dues and Fees				80.00
Total Other Objects				\$80.00
Total 2512 Budgeting Services				\$111,062.97

LEA : 123467303 Spring-Ford Area SD

Printed 11/30/2022 4:22:25 PM

General Fund (10)

2513 Receiving and Disbursing Funds Services

Elementary Secondary Federal Total

100 <u>Personnel Services – Salaries</u>				
100 Personnel Services – Salaries				75,316.98
Total Personnel Services – Salaries				\$75,316.98
200 <u>Personnel Services – Employee Benefits</u>				
210 Group Insurance – Contracted Provider				78.75
220 Social Security Contributions				5,668.99
230 PSERS Retirement Contributions				27,450.10
250 Unemployment Compensation				6.60
260 Workers' Compensation				660.00
270 Group Insurance – Self-Insurance				42,586.80
Total Personnel Services – Employee Benefits				\$76,451.24
400 <u>Purchased Property Services</u>				
430 Repairs and Maintenance Services				395.00
Total Purchased Property Services				\$395.00
500 <u>Other Purchased Services</u>				
580 Travel				843.50
Total Other Purchased Services				\$843.50
600 <u>Supplies</u>				
610 General Supplies				17.67
650 Supplies & Fees – Technology Related				800.00
Total Supplies				\$817.67
800 <u>Other Objects</u>				
810 Dues and Fees				9,323.01
Total Other Objects				\$9,323.01
Total 2513 Receiving and Disbursing Funds Services				\$163,147.40

LEA : 123467303 Spring-Ford Area SD

Printed 11/30/2022 4:22:25 PM

General Fund (10)

2514 Payroll Services

	<u>Elementary</u>	<u>Secondary</u>	<u>Federal</u>	<u>Total</u>
100 <u>Personnel Services – Salaries</u>				
100 Personnel Services – Salaries				94,631.94
Total Personnel Services – Salaries				\$94,631.94
200 <u>Personnel Services – Employee Benefits</u>				
210 Group Insurance – Contracted Provider				230.47
220 Social Security Contributions				7,154.15
230 PSERS Retirement Contributions				33,183.64
250 Unemployment Compensation				6.90
260 Workers' Compensation				690.00
270 Group Insurance – Self-Insurance				35,878.13
Total Personnel Services – Employee Benefits				\$77,143.29
500 <u>Other Purchased Services</u>				
580 Travel				101.79
Total Other Purchased Services				\$101.79
600 <u>Supplies</u>				
610 General Supplies				159.03
Total Supplies				\$159.03
800 <u>Other Objects</u>				
810 Dues and Fees				435.00
Total Other Objects				\$435.00
Total 2514 Payroll Services				\$172,471.05

LEA : 123467303 Spring-Ford Area SD

Printed 11/30/2022 4:22:25 PM

General Fund (10)

2515 Financial Accounting Services	<u>Elementary</u>	<u>Secondary</u>	<u>Federal</u>	<u>Total</u>
100 <u>Personnel Services – Salaries</u>				
100 Personnel Services – Salaries				66,950.00
Total Personnel Services – Salaries				\$66,950.00
200 <u>Personnel Services – Employee Benefits</u>				
210 Group Insurance – Contracted Provider				142.50
220 Social Security Contributions				5,074.52
230 PSERS Retirement Contributions				23,392.46
250 Unemployment Compensation				3.60
260 Workers' Compensation				360.00
270 Group Insurance – Self-Insurance				25,177.20
Total Personnel Services – Employee Benefits				\$54,150.28
300 <u>Purchased Professional and Technical Services</u>				
330 Other Professional Services				6,767.50
Total Purchased Professional and Technical Services				\$6,767.50
500 <u>Other Purchased Services</u>				
530 Communications				577.26
580 Travel				178.79
Total Other Purchased Services				\$756.05
800 <u>Other Objects</u>				
810 Dues and Fees				160.00
Total Other Objects				\$160.00
Total 2515 Financial Accounting Services				\$128,783.83

LEA : 123467303 Spring-Ford Area SD

Printed 11/30/2022 4:22:25 PM

General Fund (10)				
2516 Internal Auditing Services	<u>Elementary</u>	<u>Secondary</u>	<u>Federal</u>	<u>Total</u>
100 <u>Personnel Services – Salaries</u>				
100 Personnel Services – Salaries				62,226.00
Total Personnel Services – Salaries				\$62,226.00
200 <u>Personnel Services – Employee Benefits</u>				
210 Group Insurance – Contracted Provider				148.82
220 Social Security Contributions				4,680.31
230 PSERS Retirement Contributions				21,566.97
250 Unemployment Compensation				1.80
260 Workers' Compensation				180.00
270 Group Insurance – Self-Insurance				11,561.19
Total Personnel Services – Employee Benefits				\$38,139.09
500 <u>Other Purchased Services</u>				
530 Communications				565.17
580 Travel				9.76
Total Other Purchased Services				\$574.93
800 <u>Other Objects</u>				
810 Dues and Fees				80.00
Total Other Objects				\$80.00
Total 2516 Internal Auditing Services				\$101,020.02

LEA : 123467303 Spring-Ford Area SD

Printed 11/30/2022 4:22:25 PM

General Fund (10)

2517 Property Accounting Services	<u>Elementary</u>	<u>Secondary</u>	<u>Federal</u>	<u>Total</u>
100 <u>Personnel Services – Salaries</u>				
100 Personnel Services – Salaries				23,141.25
Total Personnel Services – Salaries				\$23,141.25
200 <u>Personnel Services – Employee Benefits</u>				
210 Group Insurance – Contracted Provider				73.63
220 Social Security Contributions				1,709.27
230 PSERS Retirement Contributions				7,870.84
250 Unemployment Compensation				1.80
260 Workers' Compensation				180.00
270 Group Insurance – Self-Insurance				5,740.95
Total Personnel Services – Employee Benefits				\$15,576.49
500 <u>Other Purchased Services</u>				
580 Travel				25.86
Total Other Purchased Services				\$25.86
800 <u>Other Objects</u>				
810 Dues and Fees				80.00
Total Other Objects				\$80.00
Total 2517 Property Accounting Services				\$38,823.60

LEA : 123467303 Spring-Ford Area SD

Printed 11/30/2022 4:22:25 PM

General Fund (10)

2519 Other Fiscal Services

	<u>Elementary</u>	<u>Secondary</u>	<u>Federal</u>	<u>Total</u>
100 <u>Personnel Services – Salaries</u>				
100 Personnel Services – Salaries			5,594.80	69,099.12
Total Personnel Services – Salaries			\$5,594.80	\$69,099.12
200 <u>Personnel Services – Employee Benefits</u>				
210 Group Insurance – Contracted Provider			10.38	103.93
220 Social Security Contributions			210.47	5,211.32
230 PSERS Retirement Contributions			977.40	24,144.57
250 Unemployment Compensation			0.59	5.98
260 Workers' Compensation			60.36	599.38
270 Group Insurance – Self-Insurance			3,502.29	15,307.04
Total Personnel Services – Employee Benefits			\$4,761.49	\$45,372.22
300 <u>Purchased Professional and Technical Services</u>				
330 Other Professional Services			49,531.21	56,624.96
Total Purchased Professional and Technical Services			\$49,531.21	\$56,624.96
800 <u>Other Objects</u>				
810 Dues and Fees				5,047.06
Total Other Objects				\$5,047.06
Total 2519 Other Fiscal Services			\$59,887.50	\$176,143.36

LEA : 123467303 Spring-Ford Area SD

Printed 11/30/2022 4:22:25 PM

General Fund (10)

2520 Purchasing Services

Elementary Secondary Federal Total

100 <u>Personnel Services – Salaries</u>				
100 Personnel Services – Salaries				23,141.03
Total Personnel Services – Salaries				\$23,141.03
200 <u>Personnel Services – Employee Benefits</u>				
210 Group Insurance – Contracted Provider				73.54
220 Social Security Contributions				1,709.18
230 PSERS Retirement Contributions				7,870.61
250 Unemployment Compensation				1.80
260 Workers' Compensation				180.00
270 Group Insurance – Self-Insurance				5,740.70
Total Personnel Services – Employee Benefits				\$15,575.83
800 <u>Other Objects</u>				
810 Dues and Fees				80.00
Total Other Objects				\$80.00
Total 2520 Purchasing Services				\$38,796.86

LEA : 123467303 Spring-Ford Area SD

Printed 11/30/2022 4:22:25 PM

General Fund (10)

2530 Warehousing and Distributing Services	<u>Elementary</u>	<u>Secondary</u>	<u>Federal</u>	<u>Total</u>
100 <u>Personnel Services – Salaries</u>				
100 Personnel Services – Salaries				29,488.17
Total Personnel Services – Salaries				\$29,488.17
200 <u>Personnel Services – Employee Benefits</u>				
210 Group Insurance – Contracted Provider				62.45
220 Social Security Contributions				2,255.73
230 PSERS Retirement Contributions				10,303.29
250 Unemployment Compensation				3.60
260 Workers' Compensation				360.00
Total Personnel Services – Employee Benefits				\$12,985.07
400 <u>Purchased Property Services</u>				
430 Repairs and Maintenance Services				10.00
Total Purchased Property Services				\$10.00
500 <u>Other Purchased Services</u>				
530 Communications				674.67
Total Other Purchased Services				\$674.67
600 <u>Supplies</u>				
610 General Supplies				584.28
Total Supplies				\$584.28
Total 2530 Warehousing and Distributing Services				\$43,742.19

LEA : 123467303 Spring-Ford Area SD

Printed 11/30/2022 4:22:25 PM

General Fund (10)				
2540 Printing, Publishing and Duplicating Services	<u>Elementary</u>	<u>Secondary</u>	<u>Federal</u>	<u>Total</u>
100 <u>Personnel Services – Salaries</u>				
100 Personnel Services – Salaries				1,499.94
Total Personnel Services – Salaries				\$1,499.94
200 <u>Personnel Services – Employee Benefits</u>				
220 Social Security Contributions				114.92
Total Personnel Services – Employee Benefits				\$114.92
600 <u>Supplies</u>				
610 General Supplies				8,924.53
650 Supplies & Fees – Technology Related				5,728.90
Total Supplies				\$14,653.43
800 <u>Other Objects</u>				
810 Dues and Fees				5,657.50
Total Other Objects				\$5,657.50
Total 2540 Printing, Publishing and Duplicating Services				\$21,925.79

LEA : 123467303 Spring-Ford Area SD

Printed 11/30/2022 4:22:25 PM

General Fund (10)				
2590 Other Support Services – Business	<u>Elementary</u>	<u>Secondary</u>	<u>Federal</u>	<u>Total</u>
300 <u>Purchased Professional and Technical Services</u>				
330 Other Professional Services				7,250.00
390 Other Purchased Professional and Technical Services				862.93
Total Purchased Professional and Technical Services				\$8,112.93
400 <u>Purchased Property Services</u>				
430 Repairs and Maintenance Services				4,139.76
440 Rentals				16,334.16
Total Purchased Property Services				\$20,473.92
500 <u>Other Purchased Services</u>				
520 Insurance – General				78.00
530 Communications				8,890.33
550 Printing and Binding				440.42
Total Other Purchased Services				\$9,408.75
600 <u>Supplies</u>				
610 General Supplies				455.58
Total Supplies				\$455.58
800 <u>Other Objects</u>				
810 Dues and Fees				2,370.65
890 Miscellaneous Expenditures				(140.11)
Total Other Objects				\$2,230.54
Total 2590 Other Support Services – Business				\$40,681.72

LEA : 123467303 Spring-Ford Area SD

Printed 11/30/2022 4:22:25 PM

General Fund (10)

2600 Operation and Maintenance of Plant Services

Elementary Secondary Federal Total

100 <u>Personnel Services – Salaries</u>				
100 Personnel Services – Salaries			4,769.65	3,628,483.13
Total Personnel Services – Salaries			\$4,769.65	\$3,628,483.13
200 <u>Personnel Services – Employee Benefits</u>				
210 Group Insurance – Contracted Provider			4.70	3,767.86
220 Social Security Contributions			182.44	272,748.27
230 PSERS Retirement Contributions			834.73	1,264,932.54
250 Unemployment Compensation			0.36	186.96
260 Workers' Compensation			36.00	18,660.00
270 Group Insurance – Self-Insurance				949,017.94
291 Other Retirement Plans				7,604.50
Total Personnel Services – Employee Benefits			\$1,058.23	\$2,516,918.07
300 <u>Purchased Professional and Technical Services</u>				
330 Other Professional Services				39,576.61
350 Security / Safety Services				22,532.00
Total Purchased Professional and Technical Services				\$62,108.61
400 <u>Purchased Property Services</u>				
410 Cleaning Services				2,038,431.00
420 Utility Services				223,065.86
430 Repairs and Maintenance Services				591,621.02
440 Rentals				12,364.31
450 Construction Services				21,342.50
460 Extermination Services				7,224.00
490 Other Purchased Property Services				701.66
Total Purchased Property Services				\$2,894,750.35
500 <u>Other Purchased Services</u>				
522 Automotive Liability Insurance				74,511.00
523 General Property and Liability Insurance				325,784.00
529 Other Insurance				26,586.00
530 Communications				36,364.29
549 Other Advertising/Public Relations				1,605.01
550 Printing and Binding				1,049.74
Total Other Purchased Services				\$465,900.04
600 <u>Supplies</u>				
610 General Supplies	397,499.68	374,909.64	21,442.50	793,851.82
620 Energy				1,589,942.90
640 Books and Periodicals				1,588.80
650 Supplies & Fees – Technology Related				660.00
Total Supplies	\$397,499.68	\$374,909.64	\$21,442.50	\$2,386,043.52
700 <u>Property</u>				
758 Capitalized Technology Software - Original				10,135.20
762 Capitalized Equipment - Replacement				112,761.41
Total Property				\$122,896.61

LEA : 123467303 Spring-Ford Area SD

Printed 11/30/2022 4:22:25 PM

General Fund (10)

2600 Operation and Maintenance of Plant Services	<u>Elementary</u>	<u>Secondary</u>	<u>Federal</u>	<u>Total</u>
800 <u>Other Objects</u>				
810 Dues and Fees				395.00
Total Other Objects				\$395.00
Total 2600 Operation and Maintenance of Plant Services	\$397,499.68	\$374,909.64	\$27,270.38	\$12,077,495.33

LEA : 123467303 Spring-Ford Area SD

Printed 11/30/2022 4:22:25 PM

General Fund (10)

2610 Supervision of Operation and Maintenance of Plant Services	<u>Elementary</u>	<u>Secondary</u>	<u>Federal</u>	<u>Total</u>
100 <u>Personnel Services – Salaries</u>				
100 Personnel Services – Salaries				279,074.03
Total Personnel Services – Salaries				\$279,074.03
200 <u>Personnel Services – Employee Benefits</u>				
210 Group Insurance – Contracted Provider				504.70
220 Social Security Contributions				21,293.74
230 PSERS Retirement Contributions				98,299.14
250 Unemployment Compensation				10.80
260 Workers' Compensation				1,080.00
270 Group Insurance – Self-Insurance				36,203.42
Total Personnel Services – Employee Benefits				\$157,391.80
500 <u>Other Purchased Services</u>				
530 Communications				1,264.74
Total Other Purchased Services				\$1,264.74
700 <u>Property</u>				
758 Capitalized Technology Software - Original				10,135.20
Total Property				\$10,135.20
800 <u>Other Objects</u>				
810 Dues and Fees				320.00
Total Other Objects				\$320.00
Total 2610 Supervision of Operation and Maintenance of Plant Services				\$448,185.77

LEA : 123467303 Spring-Ford Area SD

Printed 11/30/2022 4:22:25 PM

General Fund (10)

2611 Supervision of Operation and Maintenance of Plant Services – Head of Component	<u>Elementary</u>	<u>Secondary</u>	<u>Federal</u>	<u>Total</u>
100 <u>Personnel Services – Salaries</u>				
100 Personnel Services – Salaries				279,074.03
Total Personnel Services – Salaries				\$279,074.03
200 <u>Personnel Services – Employee Benefits</u>				
210 Group Insurance – Contracted Provider				504.70
220 Social Security Contributions				21,293.74
230 PSERS Retirement Contributions				98,299.14
250 Unemployment Compensation				10.80
260 Workers' Compensation				1,080.00
270 Group Insurance – Self-Insurance				36,203.42
Total Personnel Services – Employee Benefits				\$157,391.80
500 <u>Other Purchased Services</u>				
530 Communications				1,264.74
Total Other Purchased Services				\$1,264.74
800 <u>Other Objects</u>				
810 Dues and Fees				160.00
Total Other Objects				\$160.00
Total 2611 Supervision of Operation and Maintenance of Plant Services – Head of Component				\$437,890.57

LEA : 123467303 Spring-Ford Area SD

Printed 11/30/2022 4:22:25 PM

General Fund (10)

2619 Supervision of Operation and Maintenance of Plant Services – All Other Supervision	<u>Elementary</u>	<u>Secondary</u>	<u>Federal</u>	<u>Total</u>
700 <u>Property</u>				
758 Capitalized Technology Software - Original				10,135.20
Total Property				\$10,135.20
800 <u>Other Objects</u>				
810 Dues and Fees				160.00
Total Other Objects				\$160.00
Total 2619 Supervision of Operation and Maintenance of Plant Services – All Other Supervision				\$10,295.20

LEA : 123467303 Spring-Ford Area SD

Printed 11/30/2022 4:22:25 PM

General Fund (10)

2620 Operation of Buildings Services

	<u>Elementary</u>	<u>Secondary</u>	<u>Federal</u>	<u>Total</u>
100 <u>Personnel Services – Salaries</u>				
100 Personnel Services – Salaries				2,380,293.19
Total Personnel Services – Salaries				\$2,380,293.19
200 <u>Personnel Services – Employee Benefits</u>				
210 Group Insurance – Contracted Provider				2,254.67
220 Social Security Contributions				178,476.84
230 PSERS Retirement Contributions				828,943.78
250 Unemployment Compensation				127.80
260 Workers' Compensation				12,780.00
270 Group Insurance – Self-Insurance				699,012.10
291 Other Retirement Plans				6,424.50
Total Personnel Services – Employee Benefits				\$1,728,019.69
300 <u>Purchased Professional and Technical Services</u>				
330 Other Professional Services				39,556.61
Total Purchased Professional and Technical Services				\$39,556.61
400 <u>Purchased Property Services</u>				
410 Cleaning Services				1,915,341.21
420 Utility Services				223,065.86
430 Repairs and Maintenance Services				519,149.08
440 Rentals				12,364.31
460 Extermination Services				7,224.00
490 Other Purchased Property Services				701.66
Total Purchased Property Services				\$2,677,846.12
500 <u>Other Purchased Services</u>				
523 General Property and Liability Insurance				318,019.00
530 Communications				24,505.31
549 Other Advertising/Public Relations				1,605.01
Total Other Purchased Services				\$344,129.32
600 <u>Supplies</u>				
610 General Supplies	350,565.28	316,623.13	9,920.00	677,108.41
620 Energy				1,537,243.31
640 Books and Periodicals				1,588.80
650 Supplies & Fees – Technology Related				660.00
Total Supplies	\$350,565.28	\$316,623.13	\$9,920.00	\$2,216,600.52
700 <u>Property</u>				
762 Capitalized Equipment - Replacement				87,196.41
Total Property				\$87,196.41
Total 2620 Operation of Buildings Services	\$350,565.28	\$316,623.13	\$9,920.00	\$9,473,641.86

LEA : 123467303 Spring-Ford Area SD

Printed 11/30/2022 4:22:25 PM

General Fund (10)				
2630 Care and Upkeep of Grounds Services	<u>Elementary</u>	<u>Secondary</u>	<u>Federal</u>	<u>Total</u>
100 <u>Personnel Services – Salaries</u>				
100 Personnel Services – Salaries				458,030.41
Total Personnel Services – Salaries				\$458,030.41
200 <u>Personnel Services – Employee Benefits</u>				
210 Group Insurance – Contracted Provider				421.40
220 Social Security Contributions				34,184.33
230 PSERS Retirement Contributions				157,979.71
250 Unemployment Compensation				24.30
260 Workers' Compensation				2,430.00
270 Group Insurance – Self-Insurance				162,438.90
291 Other Retirement Plans				1,180.00
Total Personnel Services – Employee Benefits				\$358,658.64
400 <u>Purchased Property Services</u>				
410 Cleaning Services				123,089.79
430 Repairs and Maintenance Services				38,851.32
450 Construction Services				21,342.50
Total Purchased Property Services				\$183,283.61
500 <u>Other Purchased Services</u>				
530 Communications				5,938.85
Total Other Purchased Services				\$5,938.85
600 <u>Supplies</u>				
610 General Supplies	28,582.79	39,557.68		68,140.47
Total Supplies	\$28,582.79	\$39,557.68		\$68,140.47
700 <u>Property</u>				
762 Capitalized Equipment - Replacement				19,415.00
Total Property				\$19,415.00
800 <u>Other Objects</u>				
810 Dues and Fees				35.00
Total Other Objects				\$35.00
Total 2630 Care and Upkeep of Grounds Services	\$28,582.79	\$39,557.68		\$1,093,501.98

LEA : 123467303 Spring-Ford Area SD

Printed 11/30/2022 4:22:25 PM

General Fund (10)				
2640 Care and Upkeep of Equipment Services	<u>Elementary</u>	<u>Secondary</u>	<u>Federal</u>	<u>Total</u>
400 <u>Purchased Property Services</u>				
430 Repairs and Maintenance Services				19,995.07
Total Purchased Property Services				\$19,995.07
600 <u>Supplies</u>				
610 General Supplies	4,765.21	5,177.94		9,943.15
620 Energy				4,385.21
Total Supplies	\$4,765.21	\$5,177.94		\$14,328.36
700 <u>Property</u>				
762 Capitalized Equipment - Replacement				6,150.00
Total Property				\$6,150.00
Total 2640 Care and Upkeep of Equipment Services	\$4,765.21	\$5,177.94		\$40,473.43

LEA : 123467303 Spring-Ford Area SD

Printed 11/30/2022 4:22:25 PM

General Fund (10)

2650 Vehicle Operation and Maintenance Services (Other Than Student Transportation Vehicles)	<u>Elementary</u>	<u>Secondary</u>	<u>Federal</u>	<u>Total</u>
100 <u>Personnel Services – Salaries</u>				
100 Personnel Services – Salaries				627.71
Total Personnel Services – Salaries				\$627.71
200 <u>Personnel Services – Employee Benefits</u>				
220 Social Security Contributions				46.68
230 PSERS Retirement Contributions				131.97
Total Personnel Services – Employee Benefits				\$178.65
300 <u>Purchased Professional and Technical Services</u>				
330 Other Professional Services				20.00
Total Purchased Professional and Technical Services				\$20.00
400 <u>Purchased Property Services</u>				
430 Repairs and Maintenance Services				10,530.63
Total Purchased Property Services				\$10,530.63
500 <u>Other Purchased Services</u>				
522 Automotive Liability Insurance				74,511.00
Total Other Purchased Services				\$74,511.00
600 <u>Supplies</u>				
610 General Supplies	5,429.34	5,164.62		10,593.96
620 Energy				36,975.41
Total Supplies	\$5,429.34	\$5,164.62		\$47,569.37
Total 2650 Vehicle Operation and Maintenance Services (Other Than Student Transportation Vehicles)	\$5,429.34	\$5,164.62		\$133,437.36

LEA : 123467303 Spring-Ford Area SD

Printed 11/30/2022 4:22:25 PM

General Fund (10)

2660 Safety and Security Services

	<u>Elementary</u>	<u>Secondary</u>	<u>Federal</u>	<u>Total</u>
100 <u>Personnel Services – Salaries</u>				
100 Personnel Services – Salaries			4,769.65	510,457.79
Total Personnel Services – Salaries			\$4,769.65	\$510,457.79
200 <u>Personnel Services – Employee Benefits</u>				
210 Group Insurance – Contracted Provider			4.70	587.09
220 Social Security Contributions			182.44	38,746.68
230 PSERS Retirement Contributions			834.73	179,577.94
250 Unemployment Compensation			0.36	24.06
260 Workers' Compensation			36.00	2,370.00
270 Group Insurance – Self-Insurance				51,363.52
Total Personnel Services – Employee Benefits			\$1,058.23	\$272,669.29
300 <u>Purchased Professional and Technical Services</u>				
350 Security / Safety Services				22,532.00
Total Purchased Professional and Technical Services				\$22,532.00
400 <u>Purchased Property Services</u>				
430 Repairs and Maintenance Services				3,094.92
Total Purchased Property Services				\$3,094.92
500 <u>Other Purchased Services</u>				
523 General Property and Liability Insurance				7,765.00
529 Other Insurance				26,586.00
530 Communications				4,655.39
550 Printing and Binding				1,049.74
Total Other Purchased Services				\$40,056.13
600 <u>Supplies</u>				
610 General Supplies	8,157.06	8,386.27	11,522.50	28,065.83
620 Energy				11,338.97
Total Supplies	\$8,157.06	\$8,386.27	\$11,522.50	\$39,404.80
800 <u>Other Objects</u>				
810 Dues and Fees				40.00
Total Other Objects				\$40.00
Total 2660 Safety and Security Services	\$8,157.06	\$8,386.27	\$17,350.38	\$888,254.93

LEA : 123467303 Spring-Ford Area SD

Printed 11/30/2022 4:22:25 PM

General Fund (10)

2700 Student Transportation Services	<u>Elementary</u>	<u>Secondary</u>	<u>Federal</u>	<u>Total</u>
100 <u>Personnel Services – Salaries</u>				
100 Personnel Services – Salaries				146,245.19
Total Personnel Services – Salaries				\$146,245.19
200 <u>Personnel Services – Employee Benefits</u>				
210 Group Insurance – Contracted Provider				290.93
220 Social Security Contributions				10,748.89
230 PSERS Retirement Contributions				50,748.65
250 Unemployment Compensation				7.20
260 Workers' Compensation				720.00
270 Group Insurance – Self-Insurance				51,509.02
Total Personnel Services – Employee Benefits				\$114,024.69
400 <u>Purchased Property Services</u>				
430 Repairs and Maintenance Services				9,895.89
440 Rentals				3,600.00
Total Purchased Property Services				\$13,495.89
500 <u>Other Purchased Services</u>				
511 Student Transportation Services from Another LEA Within the State				42,673.93
513 Contracted Carriers				8,998,346.08
516 Student Transportation Services From the IU				122,227.42
519 Student Transportation Services From Other Sources				34,224.47
530 Communications				689.13
Total Other Purchased Services				\$9,198,161.03
600 <u>Supplies</u>				
610 General Supplies				199.20
620 Energy				6,304.76
650 Supplies & Fees – Technology Related				11,540.95
Total Supplies				\$18,044.91
800 <u>Other Objects</u>				
810 Dues and Fees				160.00
Total Other Objects				\$160.00
Total 2700 Student Transportation Services				\$9,490,131.71

LEA : 123467303 Spring-Ford Area SD

Printed 11/30/2022 4:22:25 PM

General Fund (10)

2710 Supervision of Student Transportation Services	<u>Elementary</u>	<u>Secondary</u>	<u>Federal</u>	<u>Total</u>
100 <u>Personnel Services – Salaries</u>				
100 Personnel Services – Salaries				146,245.19
Total Personnel Services – Salaries				\$146,245.19
200 <u>Personnel Services – Employee Benefits</u>				
210 Group Insurance – Contracted Provider				290.93
220 Social Security Contributions				10,748.89
230 PSERS Retirement Contributions				50,748.65
250 Unemployment Compensation				7.20
260 Workers' Compensation				720.00
270 Group Insurance – Self-Insurance				51,509.02
Total Personnel Services – Employee Benefits				\$114,024.69
500 <u>Other Purchased Services</u>				
530 Communications				516.75
Total Other Purchased Services				\$516.75
800 <u>Other Objects</u>				
810 Dues and Fees				160.00
Total Other Objects				\$160.00
Total 2710 Supervision of Student Transportation Services				\$260,946.63

LEA : 123467303 Spring-Ford Area SD

Printed 11/30/2022 4:22:25 PM

General Fund (10)

2711 Supervision of Student Transportation Services – Head of Component	<u>Elementary</u>	<u>Secondary</u>	<u>Federal</u>	<u>Total</u>
100 <u>Personnel Services – Salaries</u>				
100 Personnel Services – Salaries				146,245.19
Total Personnel Services – Salaries				\$146,245.19
200 <u>Personnel Services – Employee Benefits</u>				
210 Group Insurance – Contracted Provider				290.93
220 Social Security Contributions				10,748.89
230 PSERS Retirement Contributions				50,748.65
250 Unemployment Compensation				7.20
260 Workers' Compensation				720.00
270 Group Insurance – Self-Insurance				51,509.02
Total Personnel Services – Employee Benefits				\$114,024.69
500 <u>Other Purchased Services</u>				
530 Communications				516.75
Total Other Purchased Services				\$516.75
800 <u>Other Objects</u>				
810 Dues and Fees				160.00
Total Other Objects				\$160.00
Total 2711 Supervision of Student Transportation Services – Head of Component				\$260,946.63

LEA : 123467303 Spring-Ford Area SD

Printed 11/30/2022 4:22:25 PM

General Fund (10)

2720 Vehicle Operation Services	<u>Elementary</u>	<u>Secondary</u>	<u>Federal</u>	<u>Total</u>
400 <u>Purchased Property Services</u>				
440 Rentals				3,600.00
Total Purchased Property Services				\$3,600.00
500 <u>Other Purchased Services</u>				
513 Contracted Carriers				6,825,197.69
516 Student Transportation Services From the IU				122,227.42
519 Student Transportation Services From Other Sources				890.47
530 Communications				172.38
Total Other Purchased Services				\$6,948,487.96
600 <u>Supplies</u>				
610 General Supplies				199.20
650 Supplies & Fees – Technology Related				11,540.95
Total Supplies				\$11,740.15
Total 2720 Vehicle Operation Services				\$6,963,828.11

LEA : 123467303 Spring-Ford Area SD

Printed 11/30/2022 4:22:25 PM

General Fund (10)				
2740 Vehicle Servicing and Maintenance Services	<u>Elementary</u>	<u>Secondary</u>	<u>Federal</u>	<u>Total</u>
400 <u>Purchased Property Services</u>				
430 Repairs and Maintenance Services				9,895.89
Total Purchased Property Services				\$9,895.89
500 <u>Other Purchased Services</u>				
513 Contracted Carriers				624,471.14
Total Other Purchased Services				\$624,471.14
600 <u>Supplies</u>				
620 Energy				6,304.76
Total Supplies				\$6,304.76
Total 2740 Vehicle Servicing and Maintenance Services				\$640,671.79

LEA : 123467303 Spring-Ford Area SD

Printed 11/30/2022 4:22:25 PM

General Fund (10)				
2750 Nonpublic Transportation	<u>Elementary</u>	<u>Secondary</u>	<u>Federal</u>	<u>Total</u>
500 <u>Other Purchased Services</u>				
513 Contracted Carriers				1,467,102.25
Total Other Purchased Services				\$1,467,102.25
Total 2750 Nonpublic Transportation				\$1,467,102.25

LEA : 123467303 Spring-Ford Area SD

Printed 11/30/2022 4:22:25 PM

General Fund (10)

2790 Other Student Transportation Services

Elementary Secondary Federal Total

500 Other Purchased Services

511	Student Transportation Services from Another LEA Within the State				42,673.93
513	Contracted Carriers				81,575.00
519	Student Transportation Services From Other Sources				33,334.00

Total Other Purchased Services					\$157,582.93
---------------------------------------	--	--	--	--	---------------------

Total 2790 Other Student Transportation Services					\$157,582.93
---	--	--	--	--	---------------------

LEA : 123467303 Spring-Ford Area SD

Printed 11/30/2022 4:22:25 PM

General Fund (10)

2800 Support Services – Central

	<u>Elementary</u>	<u>Secondary</u>	<u>Federal</u>	<u>Total</u>
100 <u>Personnel Services – Salaries</u>				
100 Personnel Services – Salaries			7,857.10	1,453,855.35
Total Personnel Services – Salaries			\$7,857.10	\$1,453,855.35
200 <u>Personnel Services – Employee Benefits</u>				
210 Group Insurance – Contracted Provider				2,535.34
220 Social Security Contributions			292.62	111,131.08
230 PSERS Retirement Contributions			1,388.29	501,590.47
240 Tuition Reimbursement				133,437.52
250 Unemployment Compensation				32,301.42
260 Workers' Compensation				8,130.00
270 Group Insurance – Self-Insurance				428,034.81
291 Other Retirement Plans				8,856.50
Total Personnel Services – Employee Benefits			\$1,680.91	\$1,226,017.14
300 <u>Purchased Professional and Technical Services</u>				
330 Other Professional Services				76,467.67
340 Technical Services				86,530.09
360 Employee Training and Development Services			760.00	27,438.98
Total Purchased Professional and Technical Services			\$760.00	\$190,436.74
400 <u>Purchased Property Services</u>				
430 Repairs and Maintenance Services				104,752.30
440 Rentals				47,214.20
Total Purchased Property Services				\$151,966.50
500 <u>Other Purchased Services</u>				
530 Communications				191,875.49
549 Other Advertising/Public Relations				7,596.61
580 Travel			4,522.51	10,010.99
Total Other Purchased Services			\$4,522.51	\$209,483.09
600 <u>Supplies</u>				
610 General Supplies				22,207.48
640 Books and Periodicals				27.49
650 Supplies & Fees – Technology Related			37,835.89	691,707.85
Total Supplies			\$37,835.89	\$713,942.82
700 <u>Property</u>				
756 Capitalized Technology Equipment – Original			627,903.99	637,601.00
762 Capitalized Equipment - Replacement				31,959.33
766 Capitalized Technology Equipment – Replacement			58,917.00	115,691.24
Total Property			\$686,820.99	\$785,251.57
800 <u>Other Objects</u>				
810 Dues and Fees			150.00	3,113.00
Total Other Objects			\$150.00	\$3,113.00
Total 2800 Support Services – Central			\$739,627.40	\$4,734,066.21

LEA : 123467303 Spring-Ford Area SD

Printed 11/30/2022 4:22:25 PM

General Fund (10)

2810 Planning, Research, Development and Evaluation Services	<u>Elementary</u>	<u>Secondary</u>	<u>Federal</u>	<u>Total</u>
100 <u>Personnel Services – Salaries</u>				
100 Personnel Services – Salaries				1,127,238.89
Total Personnel Services – Salaries				\$1,127,238.89
200 <u>Personnel Services – Employee Benefits</u>				
210 Group Insurance – Contracted Provider				1,936.86
220 Social Security Contributions				84,467.30
230 PSERS Retirement Contributions				387,416.22
250 Unemployment Compensation				67.80
260 Workers' Compensation				6,780.00
270 Group Insurance – Self-Insurance				370,260.52
291 Other Retirement Plans				8,856.50
Total Personnel Services – Employee Benefits				\$859,785.20
300 <u>Purchased Professional and Technical Services</u>				
340 Technical Services				24,101.44
Total Purchased Professional and Technical Services				\$24,101.44
400 <u>Purchased Property Services</u>				
430 Repairs and Maintenance Services				104,752.30
440 Rentals				47,214.20
Total Purchased Property Services				\$151,966.50
500 <u>Other Purchased Services</u>				
530 Communications				190,449.79
580 Travel				2,691.06
Total Other Purchased Services				\$193,140.85
600 <u>Supplies</u>				
610 General Supplies				21,434.24
650 Supplies & Fees – Technology Related			37,835.89	686,853.85
Total Supplies			\$37,835.89	\$708,288.09
700 <u>Property</u>				
756 Capitalized Technology Equipment – Original			627,903.99	637,601.00
762 Capitalized Equipment - Replacement				26,184.33
766 Capitalized Technology Equipment – Replacement			58,917.00	115,691.24
Total Property			\$686,820.99	\$779,476.57
800 <u>Other Objects</u>				
810 Dues and Fees				150.00
Total Other Objects				\$150.00
Total 2810 Planning, Research, Development and Evaluation Services			\$724,656.88	\$3,844,147.54

LEA : 123467303 Spring-Ford Area SD

Printed 11/30/2022 4:22:25 PM

General Fund (10)				
2830 Staff Services				
	<u>Elementary</u>	<u>Secondary</u>	<u>Federal</u>	<u>Total</u>
100 <u>Personnel Services – Salaries</u>				
100 Personnel Services – Salaries			7,857.10	326,616.46
Total Personnel Services – Salaries			\$7,857.10	\$326,616.46
200 <u>Personnel Services – Employee Benefits</u>				
210 Group Insurance – Contracted Provider				598.48
220 Social Security Contributions			292.62	26,663.78
230 PSERS Retirement Contributions			1,388.29	114,174.25
240 Tuition Reimbursement				133,437.52
250 Unemployment Compensation				32,233.62
260 Workers' Compensation				1,350.00
270 Group Insurance – Self-Insurance				57,774.29
Total Personnel Services – Employee Benefits			\$1,680.91	\$366,231.94
300 <u>Purchased Professional and Technical Services</u>				
330 Other Professional Services				76,467.67
340 Technical Services				62,428.65
360 Employee Training and Development Services			760.00	27,438.98
Total Purchased Professional and Technical Services			\$760.00	\$166,335.30
500 <u>Other Purchased Services</u>				
530 Communications				1,425.70
549 Other Advertising/Public Relations				7,596.61
580 Travel			4,522.51	7,319.93
Total Other Purchased Services			\$4,522.51	\$16,342.24
600 <u>Supplies</u>				
610 General Supplies				773.24
640 Books and Periodicals				27.49
650 Supplies & Fees – Technology Related				4,854.00
Total Supplies				\$5,654.73
700 <u>Property</u>				
762 Capitalized Equipment - Replacement				5,775.00
Total Property				\$5,775.00
800 <u>Other Objects</u>				
810 Dues and Fees			150.00	2,963.00
Total Other Objects			\$150.00	\$2,963.00
Total 2830 Staff Services			\$14,970.52	\$889,918.67

LEA : 123467303 Spring-Ford Area SD

Printed 11/30/2022 4:22:25 PM

General Fund (10)				
2831 Supervision of Staff Services	<u>Elementary</u>	<u>Secondary</u>	<u>Federal</u>	<u>Total</u>
100 <u>Personnel Services – Salaries</u>				
100 Personnel Services – Salaries				318,759.36
Total Personnel Services – Salaries				\$318,759.36
200 <u>Personnel Services – Employee Benefits</u>				
210 Group Insurance – Contracted Provider				598.48
220 Social Security Contributions				22,928.29
230 PSERS Retirement Contributions				110,957.36
250 Unemployment Compensation				32,233.62
260 Workers' Compensation				1,350.00
270 Group Insurance – Self-Insurance				57,774.29
Total Personnel Services – Employee Benefits				\$225,842.04
300 <u>Purchased Professional and Technical Services</u>				
330 Other Professional Services				74,336.23
340 Technical Services				62,428.65
Total Purchased Professional and Technical Services				\$136,764.88
500 <u>Other Purchased Services</u>				
530 Communications				1,425.70
549 Other Advertising/Public Relations				7,596.61
580 Travel				25.00
Total Other Purchased Services				\$9,047.31
600 <u>Supplies</u>				
610 General Supplies				835.35
650 Supplies & Fees – Technology Related				4,854.00
Total Supplies				\$5,689.35
700 <u>Property</u>				
762 Capitalized Equipment - Replacement				5,775.00
Total Property				\$5,775.00
800 <u>Other Objects</u>				
810 Dues and Fees				2,813.00
Total Other Objects				\$2,813.00
Total 2831 Supervision of Staff Services				\$704,690.94

LEA : 123467303 Spring-Ford Area SD

Printed 11/30/2022 4:22:25 PM

General Fund (10)

2834 Staff Development Services – Non-Instructional, Certified Staff Only

	<u>Elementary</u>	<u>Secondary</u>	<u>Federal</u>	<u>Total</u>
100 <u>Personnel Services – Salaries</u>				
100 Personnel Services – Salaries			360.00	360.00
Total Personnel Services – Salaries			\$360.00	\$360.00
200 <u>Personnel Services – Employee Benefits</u>				
220 Social Security Contributions			13.00	3,176.21
230 PSERS Retirement Contributions			62.88	566.03
240 Tuition Reimbursement				130,358.52
Total Personnel Services – Employee Benefits			\$75.88	\$134,100.76
300 <u>Purchased Professional and Technical Services</u>				
360 Employee Training and Development Services			760.00	19,406.98
Total Purchased Professional and Technical Services			\$760.00	\$19,406.98
500 <u>Other Purchased Services</u>				
580 Travel			3,970.51	3,970.51
Total Other Purchased Services			\$3,970.51	\$3,970.51
600 <u>Supplies</u>				
640 Books and Periodicals				27.49
Total Supplies				\$27.49
800 <u>Other Objects</u>				
810 Dues and Fees			90.00	90.00
Total Other Objects			\$90.00	\$90.00
Total 2834 Staff Development Services – Non-Instructional, Certified Staff Only			\$5,256.39	\$157,955.74

LEA : 123467303 Spring-Ford Area SD

Printed 11/30/2022 4:22:25 PM

General Fund (10)

2835 Health Services

	<u>Elementary</u>	<u>Secondary</u>	<u>Federal</u>	<u>Total</u>
100 <u>Personnel Services – Salaries</u>				
100 Personnel Services – Salaries			7,497.10	7,497.10
Total Personnel Services – Salaries			\$7,497.10	\$7,497.10
200 <u>Personnel Services – Employee Benefits</u>				
220 Social Security Contributions			279.62	559.28
230 PSERS Retirement Contributions			1,325.41	2,650.86
Total Personnel Services – Employee Benefits			\$1,605.03	\$3,210.14
Total 2835 Health Services			\$9,102.13	\$10,707.24

LEA : 123467303 Spring-Ford Area SD

Printed 11/30/2022 4:22:25 PM

General Fund (10)					
2836 Staff Development Services – Non-Instructional, Non-Certified Staff Only		<u>Elementary</u>	<u>Secondary</u>	<u>Federal</u>	<u>Total</u>
200 <u>Personnel Services – Employee Benefits</u>					
240 Tuition Reimbursement					3,079.00
Total Personnel Services – Employee Benefits					\$3,079.00
300 <u>Purchased Professional and Technical Services</u>					
360 Employee Training and Development Services					8,032.00
Total Purchased Professional and Technical Services					\$8,032.00
500 <u>Other Purchased Services</u>					
580 Travel				552.00	3,324.42
Total Other Purchased Services				\$552.00	\$3,324.42
600 <u>Supplies</u>					
610 General Supplies					(62.11)
Total Supplies					(\$62.11)
800 <u>Other Objects</u>					
810 Dues and Fees				60.00	60.00
Total Other Objects				\$60.00	\$60.00
Total 2836 Staff Development Services – Non-Instructional, Non-Certified Staff Only				\$612.00	\$14,433.31

LEA : 123467303 Spring-Ford Area SD

Printed 11/30/2022 4:22:25 PM

General Fund (10)

2839 Other Staff Services

<u>Elementary</u>	<u>Secondary</u>	<u>Federal</u>	<u>Total</u>
-------------------	------------------	----------------	--------------

300 Purchased Professional and Technical Services

330 Other Professional Services			2,131.44
---------------------------------	--	--	----------

Total Purchased Professional and Technical Services			\$2,131.44
--	--	--	-------------------

Total 2839 Other Staff Services			\$2,131.44
--	--	--	-------------------

LEA : 123467303 Spring-Ford Area SD

Printed 11/30/2022 4:22:25 PM

General Fund (10)

2900 Other Support Services	<u>Elementary</u>	<u>Secondary</u>	<u>Federal</u>	<u>Total</u>
300 <u>Purchased Professional and Technical Services</u>				
390 Other Purchased Professional and Technical Services				8,316.12
Total Purchased Professional and Technical Services				\$8,316.12
500 <u>Other Purchased Services</u>				
595 IU Payments By Withholding				108,759.17
Total Other Purchased Services				\$108,759.17
Total 2900 Other Support Services				\$117,075.29

LEA : 123467303 Spring-Ford Area SD

Printed 11/30/2022 4:22:25 PM

General Fund (10)

2910 Support Services Not Listed Elsewhere In the 2000 Series

Elementary Secondary Federal Total

300 Purchased Professional and Technical Services

390 Other Purchased Professional and Technical Services 8,316.12

Total Purchased Professional and Technical Services \$8,316.12

500 Other Purchased Services

595 IU Payments By Withholding 108,759.17

Total Other Purchased Services \$108,759.17

Total 2910 Support Services Not Listed Elsewhere In the 2000 Series \$117,075.29

LEA : 123467303 Spring-Ford Area SD

Printed 11/30/2022 4:22:45 PM

General Fund (10)

3000 Operation of Non-Instructional Services		Total
100 <u>Personnel Services – Salaries</u>		
100 Personnel Services – Salaries		1,551,604.28
Total Personnel Services – Salaries		\$1,551,604.28
200 <u>Personnel Services – Employee Benefits</u>		
210 Group Insurance – Contracted Provider		578.03
220 Social Security Contributions		117,473.48
230 PSERS Retirement Contributions		542,472.53
250 Unemployment Compensation		20.57
260 Workers' Compensation		2,057.48
270 Group Insurance – Self-Insurance		116,958.24
Total Personnel Services – Employee Benefits		\$779,560.33
300 <u>Purchased Professional and Technical Services</u>		
329 Professional Educational Services – Other		47,213.50
330 Other Professional Services		11,473.00
340 Technical Services		20.00
350 Security / Safety Services		61,964.75
Total Purchased Professional and Technical Services		\$120,671.25
400 <u>Purchased Property Services</u>		
410 Cleaning Services		5,263.00
430 Repairs and Maintenance Services		27,297.54
440 Rentals		30,024.28
Total Purchased Property Services		\$62,584.82
500 <u>Other Purchased Services</u>		
510 Student Transportation Services		192,363.82
530 Communications		3,447.86
550 Printing and Binding		1,702.18
580 Travel		20,407.72
Total Other Purchased Services		\$217,921.58
600 <u>Supplies</u>		
610 General Supplies		175,348.18
620 Energy		228.74
630 Food		44.97
650 Supplies & Fees – Technology Related		23,089.69
Total Supplies		\$198,711.58
800 <u>Other Objects</u>		
810 Dues and Fees		8,559.86
890 Miscellaneous Expenditures		22,795.91
Total Other Objects		\$31,355.77
Total 3000 Operation of Non-Instructional Services		\$2,962,409.61

LEA : 123467303 Spring-Ford Area SD

Printed 11/30/2022 4:22:45 PM

General Fund (10)

3200 Student Activities

	<u>Elementary</u>	<u>Secondary</u>	<u>Federal</u>	<u>Total</u>
100 <u>Personnel Services – Salaries</u>				
100 Personnel Services – Salaries				1,551,604.28
Total Personnel Services – Salaries				\$1,551,604.28
200 <u>Personnel Services – Employee Benefits</u>				
210 Group Insurance – Contracted Provider				578.03
220 Social Security Contributions				117,473.48
230 PSERS Retirement Contributions				542,472.53
250 Unemployment Compensation				20.57
260 Workers' Compensation				2,057.48
270 Group Insurance – Self-Insurance				116,958.24
Total Personnel Services – Employee Benefits				\$779,560.33
300 <u>Purchased Professional and Technical Services</u>				
329 Professional Educational Services – Other				47,213.50
330 Other Professional Services				11,473.00
340 Technical Services				20.00
350 Security / Safety Services				61,964.75
Total Purchased Professional and Technical Services				\$120,671.25
400 <u>Purchased Property Services</u>				
410 Cleaning Services				5,263.00
430 Repairs and Maintenance Services				27,297.54
440 Rentals				30,024.28
Total Purchased Property Services				\$62,584.82
500 <u>Other Purchased Services</u>				
510 Student Transportation Services				192,363.82
530 Communications				3,447.86
550 Printing and Binding				1,702.18
580 Travel				20,407.72
Total Other Purchased Services				\$217,921.58
600 <u>Supplies</u>				
610 General Supplies				169,100.54
620 Energy				228.74
630 Food				44.97
650 Supplies & Fees – Technology Related				21,895.69
Total Supplies				\$191,269.94
800 <u>Other Objects</u>				
810 Dues and Fees				8,559.86
890 Miscellaneous Expenditures				22,795.91
Total Other Objects				\$31,355.77
Total 3200 Student Activities				\$2,954,967.97

LEA : 123467303 Spring-Ford Area SD

Printed 11/30/2022 4:22:45 PM

General Fund (10)				
3300 Community Services	<u>Elementary</u>	<u>Secondary</u>	<u>Federal</u>	<u>Total</u>
600 <u>Supplies</u>				
610 General Supplies			6,247.64	6,247.64
650 Supplies & Fees – Technology Related			1,194.00	1,194.00
Total Supplies			\$7,441.64	\$7,441.64
Total 3300 Community Services			\$7,441.64	\$7,441.64

LEA : 123467303 Spring-Ford Area SD

Printed 11/30/2022 4:22:48 PM

General Fund (10)

4000 Facilities Acquisition, Construction and Improvement Services

Total

300 Purchased Professional and Technical Services

330 Other Professional Services	40,932.53
---------------------------------	-----------

Total Purchased Professional and Technical Services	\$40,932.53
--	--------------------

400 Purchased Property Services

430 Repairs and Maintenance Services	47,793.00
450 Construction Services	77,454.10
490 Other Purchased Property Services	9,700.00

Total Purchased Property Services	\$134,947.10
--	---------------------

700 Property

752 Capital Equipment – Original and Additional	105,389.69
762 Capitalized Equipment - Replacement	10,000.00

Total Property	\$115,389.69
-----------------------	---------------------

Total 4000 Facilities Acquisition, Construction and Improvement Services	\$291,269.32
---	---------------------

LEA : 123467303 Spring-Ford Area SD

Printed 11/30/2022 4:22:48 PM

General Fund (10)

4200 Existing Site Improvement Services	<u>Elementary</u>	<u>Secondary</u>	<u>Federal</u>	<u>Total</u>
400 <u>Purchased Property Services</u>				
450 Construction Services				77,454.10
490 Other Purchased Property Services				9,700.00
Total Purchased Property Services				\$87,154.10
Total 4200 Existing Site Improvement Services				\$87,154.10

LEA : 123467303 Spring-Ford Area SD

Printed 11/30/2022 4:22:48 PM

General Fund (10)

4400 Architecture and Engineering Services / Educational Specifications – Improvements	<u>Elementary</u>	<u>Secondary</u>	<u>Federal</u>	<u>Total</u>
300 <u>Purchased Professional and Technical Services</u>				
330 Other Professional Services				33,932.53
Total Purchased Professional and Technical Services				\$33,932.53
Total 4400 Architecture and Engineering Services / Educational Specifications – Improvements				\$33,932.53

LEA : 123467303 Spring-Ford Area SD

Printed 11/30/2022 4:22:48 PM

General Fund (10)				
4600 Existing Building Improvement Services	<u>Elementary</u>	<u>Secondary</u>	<u>Federal</u>	<u>Total</u>
300 <u>Purchased Professional and Technical Services</u>				
330 Other Professional Services				7,000.00
Total Purchased Professional and Technical Services				\$7,000.00
400 <u>Purchased Property Services</u>				
430 Repairs and Maintenance Services				47,793.00
Total Purchased Property Services				\$47,793.00
700 <u>Property</u>				
752 Capital Equipment – Original and Additional			74,141.80	105,389.69
762 Capitalized Equipment - Replacement				10,000.00
Total Property			\$74,141.80	\$115,389.69
Total 4600 Existing Building Improvement Services			\$74,141.80	\$170,182.69

LEA : 123467303 Spring-Ford Area SD

Printed 11/30/2022 4:22:53 PM

General Fund (10)

5000 Other Expenditures and Financing Uses

Total

800 Other Objects

830 Interest	2,014,340.73
880 Refunds of Prior Years' Receipts	37,591.90

Total Other Objects	\$2,051,932.63
----------------------------	-----------------------

900 Other Uses of Funds

910 Redemption of Principal	11,134,000.00
932 Capital Reserve Fund Transfers Applicable To Fund 32	4,481,850.00

Total Other Uses of Funds	\$15,615,850.00
----------------------------------	------------------------

Total 5000 Other Expenditures and Financing Uses	\$17,667,782.63
---	------------------------

LEA : 123467303 Spring-Ford Area SD

Printed 11/30/2022 4:22:53 PM

General Fund (10)

5100 Debt Service / Other Expenditures and Financing Uses	<u>Elementary</u>	<u>Secondary</u>	<u>Federal</u>	<u>Total</u>
800 <u>Other Objects</u>				
830 Interest				2,014,340.73
880 Refunds of Prior Years' Receipts				37,591.90
Total Other Objects				\$2,051,932.63
900 <u>Other Uses of Funds</u>				
910 Redemption of Principal				11,134,000.00
Total Other Uses of Funds				\$11,134,000.00
Total 5100 Debt Service / Other Expenditures and Financing Uses				\$13,185,932.63

LEA : 123467303 Spring-Ford Area SD

Printed 11/30/2022 4:22:53 PM

General Fund (10)				
5110 Debt Service	<u>Elementary</u>	<u>Secondary</u>	<u>Federal</u>	<u>Total</u>
800 <u>Other Objects</u>				
830 Interest				2,014,340.73
Total Other Objects				\$2,014,340.73
900 <u>Other Uses of Funds</u>				
910 Redemption of Principal				11,134,000.00
Total Other Uses of Funds				\$11,134,000.00
Total 5110 Debt Service				\$13,148,340.73

LEA : 123467303 Spring-Ford Area SD

Printed 11/30/2022 4:22:53 PM

General Fund (10)

5130 Refund of Prior Year Revenues / Receipts	<u>Elementary</u>	<u>Secondary</u>	<u>Federal</u>	<u>Total</u>
800 <u>Other Objects</u>				
880 Refunds of Prior Years' Receipts				37,591.90
Total Other Objects				\$37,591.90
Total 5130 Refund of Prior Year Revenues / Receipts				\$37,591.90

LEA : 123467303 Spring-Ford Area SD

Printed 11/30/2022 4:22:53 PM

General Fund (10)

5200 Interfund Transfers – Out	<u>Elementary</u>	<u>Secondary</u>	<u>Federal</u>	<u>Total</u>
900 <u>Other Uses of Funds</u>				
932 Capital Reserve Fund Transfers Applicable To Fund 32				4,481,850.00
Total Other Uses of Funds				\$4,481,850.00
Total 5200 Interfund Transfers – Out				\$4,481,850.00

LEA : 123467303 Spring-Ford Area SD

Printed 11/30/2022 4:22:53 PM

General Fund (10)

5230 Capital Projects Fund Transfers	<u>Elementary</u>	<u>Secondary</u>	<u>Federal</u>	<u>Total</u>
900 <u>Other Uses of Funds</u>				
932 Capital Reserve Fund Transfers Applicable To Fund 32				4,481,850.00
Total Other Uses of Funds				\$4,481,850.00
Total 5230 Capital Projects Fund Transfers				\$4,481,850.00

LEA : 123467303 Spring-Ford Area SD

Printed 11/30/2022 4:22:38 PM

Capital Reserve Fund - § 1431 (32)

2000 Support Services

Total

300 Purchased Professional and Technical Services

340 Technical Services	20,418.75
------------------------	-----------

Total Purchased Professional and Technical Services	\$20,418.75
--	--------------------

400 Purchased Property Services

430 Repairs and Maintenance Services	115,161.20
--------------------------------------	------------

Total Purchased Property Services	\$115,161.20
--	---------------------

600 Supplies

650 Supplies & Fees – Technology Related	109,764.00
--	------------

Total Supplies	\$109,764.00
-----------------------	---------------------

700 Property

756 Capitalized Technology Equipment – Original	445,694.93
---	------------

766 Capitalized Technology Equipment – Replacement	1,363,642.15
--	--------------

Total Property	\$1,809,337.08
-----------------------	-----------------------

Total 2000 Support Services	\$2,054,681.03
------------------------------------	-----------------------

LEA : 123467303 Spring-Ford Area SD

Printed 11/30/2022 4:22:38 PM

Capital Reserve Fund - § 1431 (32)				
2800 Support Services – Central				
	<u>Elementary</u>	<u>Secondary</u>	<u>Federal</u>	<u>Total</u>
300 <u>Purchased Professional and Technical Services</u>				
340 Technical Services				20,418.75
Total Purchased Professional and Technical Services				\$20,418.75
400 <u>Purchased Property Services</u>				
430 Repairs and Maintenance Services				115,161.20
Total Purchased Property Services				\$115,161.20
600 <u>Supplies</u>				
650 Supplies & Fees – Technology Related				109,764.00
Total Supplies				\$109,764.00
700 <u>Property</u>				
756 Capitalized Technology Equipment – Original				445,694.93
766 Capitalized Technology Equipment – Replacement				1,363,642.15
Total Property				\$1,809,337.08
Total 2800 Support Services – Central				\$2,054,681.03

LEA : 123467303 Spring-Ford Area SD

Printed 11/30/2022 4:22:38 PM

Capital Reserve Fund - § 1431 (32)

2810 Planning, Research, Development and Evaluation Services

Elementary Secondary Federal Total

300 <u>Purchased Professional and Technical Services</u>				
340 Technical Services				20,418.75
Total Purchased Professional and Technical Services				\$20,418.75
400 <u>Purchased Property Services</u>				
430 Repairs and Maintenance Services				115,161.20
Total Purchased Property Services				\$115,161.20
600 <u>Supplies</u>				
650 Supplies & Fees – Technology Related				109,764.00
Total Supplies				\$109,764.00
700 <u>Property</u>				
756 Capitalized Technology Equipment – Original				445,694.93
766 Capitalized Technology Equipment – Replacement				1,363,642.15
Total Property				\$1,809,337.08
Total 2810 Planning, Research, Development and Evaluation Services				\$2,054,681.03

LEA : 123467303 Spring-Ford Area SD

Printed 11/30/2022 4:22:51 PM

Capital Reserve Fund - § 1431 (32)

4000 Facilities Acquisition, Construction and Improvement Services

Total

400	<u>Purchased Property Services</u>	
450	Construction Services	441,650.25
Total Purchased Property Services		\$441,650.25
700	<u>Property</u>	
710	Land and Improvements	122,266.00
762	Capitalized Equipment - Replacement	1,592,328.04
Total Property		\$1,714,594.04
Total 4000 Facilities Acquisition, Construction and Improvement Services		\$2,156,244.29

LEA : 123467303 Spring-Ford Area SD

Printed 11/30/2022 4:22:51 PM

Capital Reserve Fund - § 1431 (32)

4200 Existing Site Improvement Services	<u>Elementary</u>	<u>Secondary</u>	<u>Federal</u>	<u>Total</u>
700 <u>Property</u>				
710 Land and Improvements				122,266.00
Total Property				\$122,266.00
Total 4200 Existing Site Improvement Services				\$122,266.00

LEA : 123467303 Spring-Ford Area SD

Printed 11/30/2022 4:22:51 PM

Capital Reserve Fund - § 1431 (32)				
4600 Existing Building Improvement Services	<u>Elementary</u>	<u>Secondary</u>	<u>Federal</u>	<u>Total</u>
400 <u>Purchased Property Services</u>				
450 Construction Services				441,650.25
Total Purchased Property Services				\$441,650.25
700 <u>Property</u>				
762 Capitalized Equipment - Replacement				1,592,328.04
Total Property				\$1,592,328.04
Total 4600 Existing Building Improvement Services				\$2,033,978.29

LEA : 123467303 Spring-Ford Area SD

Printed 11/30/2022 4:22:56 PM

Other Capital Projects Fund (39)

5000 Other Expenditures and Financing Uses

Total

900 Other Uses of Funds

939 Other Fund Transfers

115.27

Total Other Uses of Funds

\$115.27

Total 5000 Other Expenditures and Financing Uses

\$115.27

LEA : 123467303 Spring-Ford Area SD

Printed 11/30/2022 4:22:56 PM

Other Capital Projects Fund (39)

5200 Interfund Transfers – Out

<u>Elementary</u>	<u>Secondary</u>	<u>Federal</u>	<u>Total</u>
-------------------	------------------	----------------	--------------

900 Other Uses of Funds

939 Other Fund Transfers			115.27
--------------------------	--	--	--------

Total Other Uses of Funds			\$115.27
----------------------------------	--	--	-----------------

Total 5200 Interfund Transfers – Out			\$115.27
---	--	--	-----------------

LEA : 123467303 Spring-Ford Area SD

Printed 11/30/2022 4:22:56 PM

Other Capital Projects Fund (39)

5210 General Fund Transfers	<u>Elementary</u>	<u>Secondary</u>	<u>Federal</u>	<u>Total</u>
900 <u>Other Uses of Funds</u>				
939 Other Fund Transfers				115.27
Total Other Uses of Funds				\$115.27
Total 5210 General Fund Transfers				\$115.27

LEA : 123467303 Spring-Ford Area SD

Printed 11/30/2022 4:22:58 PM

Debt Service Fund (40)

5000 Other Expenditures and Financing Uses

Total

900 Other Uses of Funds

939 Other Fund Transfers	1,512,000.00
--------------------------	--------------

Total Other Uses of Funds	\$1,512,000.00
Total 5000 Other Expenditures and Financing Uses	\$1,512,000.00

LEA : 123467303 Spring-Ford Area SD

Printed 11/30/2022 4:22:58 PM

Debt Service Fund (40)

5200 Interfund Transfers – Out	<u>Elementary</u>	<u>Secondary</u>	<u>Federal</u>	<u>Total</u>
900 <u>Other Uses of Funds</u>				
939 Other Fund Transfers				1,512,000.00
Total Other Uses of Funds				\$1,512,000.00
Total 5200 Interfund Transfers – Out				\$1,512,000.00

LEA : 123467303 Spring-Ford Area SD

Printed 11/30/2022 4:22:58 PM

Debt Service Fund (40)

5210 General Fund Transfers

Elementary Secondary Federal Total

900 Other Uses of Funds

939 Other Fund Transfers 1,512,000.00

Total Other Uses of Funds \$1,512,000.00

Total 5210 General Fund Transfers \$1,512,000.00

LEA : 123467303 Spring-Ford Area SD

Printed 11/30/2022 4:23:01 PM

	<u>General Fund(10)</u>	<u>Student Sponsored Activity Fund(21)</u>	<u>Public Purpose Trust(27)</u>	<u>Other Compt Approved (28)</u>	<u>Athletic / Activity(29)</u>
1000 <u>Instruction</u>					
1100 Regular Programs - Elementary / Secondary	65,892,837.70				
1200 Special Programs - Elementary / Secondary	38,175,418.78				
1300 Vocational Education	3,549,113.58				
1400 Other Instructional Programs - Elementary / Secondary	777,549.87				
1500 Nonpublic School Programs	2,290.38				
1700 Higher Education Programs for Secondary Students	16,750.00				
Total Instruction	\$108,413,960.31				
2000 <u>Support Services</u>					
2100 Support Services - Students	7,473,338.29				
2200 Support Services - Instructional Staff	7,191,162.52				
2300 Support Services - Administration	8,512,849.24				
2400 Support Services - Pupil Health	3,254,083.45				
2500 Support Services - Business	1,332,203.72				
2600 Operation and Maintenance of Plant Services	12,077,495.33				
2700 Student Transportation Services	9,490,131.71				
2800 Support Services - Central	4,734,066.21				
2900 Other Support Services	117,075.29				
Total Support Services	\$54,182,405.76				
3000 <u>Operation of Non-Instructional Services</u>					
3200 Student Activities	2,954,967.97				
3300 Community Services	7,441.64				
Total Operation of Non-Instructional Services	\$2,962,409.61				
4000 <u>Facilities Acquisition, Construction and Improvement Services</u>					
4200 Existing Site Improvement Services	87,154.10				
4400 Architecture and Engineering Services / Educational Specifications - Improvements	33,932.53				
4600 Existing Building Improvement Services	170,182.69				
Total Facilities Acquisition, Construction and Improvement Services	\$291,269.32				
5000 <u>Other Expenditures and Financing Uses</u>					
5100 Debt Service / Other Expenditures and Financing Uses	13,185,932.63				
5200 Interfund Transfers - Out	4,481,850.00				
Total Other Expenditures and Financing Uses	\$17,667,782.63				
TOTAL ACTUAL EXPENDITURES & OTHER FINANCING USES	\$183,517,827.63				

LEA : 123467303 Spring-Ford Area SD

Printed 11/30/2022 4:23:01 PM

	<u>Capital Reserve (690.1850)(31)</u>	<u>Capital Reserve (1431)(32)</u>	<u>Other Capital Projects Fund(39)</u>	<u>Debt Service(40)</u>	<u>Permanent(90)</u>
1000 <u>Instruction</u>					
1100 Regular Programs - Elementary / Secondary					
1200 Special Programs - Elementary / Secondary					
1300 Vocational Education					
1400 Other Instructional Programs - Elementary / Secondary					
1500 Nonpublic School Programs					
1700 Higher Education Programs for Secondary Students					
Total Instruction					
2000 <u>Support Services</u>					
2100 Support Services - Students					
2200 Support Services - Instructional Staff					
2300 Support Services - Administration					
2400 Support Services - Pupil Health					
2500 Support Services - Business					
2600 Operation and Maintenance of Plant Services					
2700 Student Transportation Services					
2800 Support Services - Central		2,054,681.03			
2900 Other Support Services					
Total Support Services		\$2,054,681.03			
3000 <u>Operation of Non-Instructional Services</u>					
3200 Student Activities					
3300 Community Services					
Total Operation of Non-Instructional Services					
4000 <u>Facilities Acquisition, Construction and Improvement Services</u>					
4200 Existing Site Improvement Services		122,266.00			
4400 Architecture and Engineering Services / Educational Specifications - Improvements					
4600 Existing Building Improvement Services		2,033,978.29			
Total Facilities Acquisition, Construction and Improvement Services		\$2,156,244.29			
5000 <u>Other Expenditures and Financing Uses</u>					
5100 Debt Service / Other Expenditures and Financing Uses					
5200 Interfund Transfers - Out			115.27	1,512,000.00	
Total Other Expenditures and Financing Uses			\$115.27	\$1,512,000.00	
TOTAL ACTUAL EXPENDITURES & OTHER FINANCING USES		\$4,210,925.32	\$115.27	\$1,512,000.00	

LEA : 123467303 Spring-Ford Area SD

Printed 11/30/2022 4:23:01 PM

	<u>Total</u>
1000 <u>Instruction</u>	
1100 Regular Programs - Elementary / Secondary	65,892,837.70
1200 Special Programs - Elementary / Secondary	38,175,418.78
1300 Vocational Education	3,549,113.58
1400 Other Instructional Programs - Elementary / Secondary	777,549.87
1500 Nonpublic School Programs	2,290.38
1700 Higher Education Programs for Secondary Students	16,750.00
Total Instruction	\$108,413,960.31
2000 <u>Support Services</u>	
2100 Support Services - Students	7,473,338.29
2200 Support Services - Instructional Staff	7,191,162.52
2300 Support Services - Administration	8,512,849.24
2400 Support Services - Pupil Health	3,254,083.45
2500 Support Services - Business	1,332,203.72
2600 Operation and Maintenance of Plant Services	12,077,495.33
2700 Student Transportation Services	9,490,131.71
2800 Support Services - Central	6,788,747.24
2900 Other Support Services	117,075.29
Total Support Services	\$56,237,086.79
3000 <u>Operation of Non-Instructional Services</u>	
3200 Student Activities	2,954,967.97
3300 Community Services	7,441.64
Total Operation of Non-Instructional Services	\$2,962,409.61
4000 <u>Facilities Acquisition, Construction and Improvement Services</u>	
4200 Existing Site Improvement Services	209,420.10
4400 Architecture and Engineering Services / Educational Specifications - Improvements	33,932.53
4600 Existing Building Improvement Services	2,204,160.98
Total Facilities Acquisition, Construction and Improvement Services	\$2,447,513.61
5000 <u>Other Expenditures and Financing Uses</u>	
5100 Debt Service / Other Expenditures and Financing Uses	13,185,932.63
5200 Interfund Transfers - Out	5,993,965.27
Total Other Expenditures and Financing Uses	\$19,179,897.90
TOTAL ACTUAL EXPENDITURES & OTHER FINANCING USES	\$189,240,868.22

LEA : 123467303 Spring-Ford Area SD

Printed 11/30/2022 4:23:18 PM

PSERS Salary Data (Salary Data should relate to the General Fund only)

Amount	Description	Amount
	Total Salary Base for salaries subject to PSERS withholding	70,260,997.17
	Total Federally Funded salaries subject to PSERS withholding	2,947,960.76

Title I Expenditure Data

Amount	Description	Amount
	Expenditures Funded with Current Title I Funds	427,620.59
	Expenditures Funded with Carry over Title I Funds	
Total Title I Expenditure Data		\$427,620.59

Title IV Revenue Data

Amount	Description	Amount
	Revenue from Title IV-A-1: Student Support and Academic Enrichment Grants	43,884.00
	Revenue from Title IV-B: 21st Century Community Learning Centers	

Title V Revenue Data

Amount	Description	Amount
	Revenue from Title V-B-2: Rural and Low-Income School Programs	
	Revenue from Title V-B-1: Small Rural School Achievement (Directly from the Federal Govt)	

LEA : 123467303 Spring-Ford Area SD

1 . <u>Current Special Education Expenditures within Function 1000.\r\nSee list of exclusions in the note below.</u>	33,077,503.56
2 . <u>Current Special Education Expenditures within Function 2000.\r\nSee list of exclusions in the note below.</u>	8,363,908.17
3 . <u>Current Special Education Expenditures within Sub-Function 2100.\r\nThis data should also be included in line 2 above.\r\nSee list of exclusions in the note below.</u>	2,372,221.47
4 . <u>Current Special Education Expenditures within Sub-Function 2200.\r\nThis data should also be included in line 2 above.\r\nSee list of exclusions in the note below.</u>	1,200,910.18
5 . <u>Current Special Education Expenditures within Sub-Function 2700.\r\nThis data should also be included in line 2 above.\r\nSee list of exclusions in the note below.</u>	3,309,866.71
6 . <u>Current Special Education Expenditures within Sub-Function 3100.\r\nSee list of exclusions in the note below.</u>	236,102.13
7 . <u>Current Special Education Expenditures within Sub-Function 3200.\r\nSee list of exclusions in the note below.</u>	552.50

Note: The Current Special Education Expenditure amounts for each line should be calculated as follows:

- * Include the total expenditures for special education costs from all funds for the function/sub-function requested
- * Exclude data from sub-functions: 1243,1450,1500,1600,1807,2280,2450,2750,2990
- * Exclude data from objects: 322,511,512,516,561,562,564,566,592,593,594,595,596,597,700,830,899

Benefits for Staff Relative to Collective Bargaining Agreements

	OBJECT	COVERED	NOT COVERED	TOTAL
10 General Fund				
	211 Medical Insurance			
	212 Dental Insurance			
	215 Eye Care Insurance			
	216 Prescription Insurance			
	271 Self-Insurance Medical Benefits	6,898,399.47	3,904,544.70	10,802,944.17
	272 Self-Insurance Dental Benefits	438,708.74	254,402.82	693,111.56
	275 Self-Insurance Eye Care Benefits	122,803.65	12,628.28	135,431.93
	276 Self-Insurance Prescription Benefits	2,604,499.40	2,993,523.14	5,598,022.54
	FUND TOTAL	\$10,064,411.26	\$7,165,098.94	\$17,229,510.20
50 Enterprise Fund				
	211 Medical Insurance			
	212 Dental Insurance			
	215 Eye Care Insurance			
	216 Prescription Insurance			
	271 Self-Insurance Medical Benefits		147,656.10	147,656.10
	272 Self-Insurance Dental Benefits		17,118.42	17,118.42
	275 Self-Insurance Eye Care Benefits		3,567.87	3,567.87
	276 Self-Insurance Prescription Benefits		106,071.22	106,071.22
	FUND TOTAL		\$274,413.61	\$274,413.61
60 Internal Service Fund	No Self Insurance data to report			
	211 Medical Insurance			
	212 Dental Insurance			
	215 Eye Care Insurance			
	216 Prescription Insurance			
	271 Self-Insurance Medical Benefits			
	272 Self-Insurance Dental Benefits			
	275 Self-Insurance Eye Care Benefits			
	276 Self-Insurance Prescription Benefits			
	FUND TOTAL			
Total of All Funds		\$10,064,411.26	\$7,439,512.55	\$17,503,923.81

LEA : 123467303 Spring-Ford Area SD

Printed 11/30/2022 4:23:30 PM

Function	Special Education (Prior Year)	Nonspecial Education (Prior Year)	Total (Prior Year)	Special Education (Current Year)	Nonspecial Education (Current Year)	Total (Current Year)
2120 Guidance Services	437,534.43	4,257,277.95	4,694,812.38	721,489.19	4,545,854.02	5,267,343.21
2140 Psychological Services	1,288,157.94	105,885.33	1,394,043.27	1,435,987.33	155,012.69	1,591,000.02
2150 Speech Pathology and Audiology Services	115,164.36		115,164.36	167,943.85		167,943.85
2160 Social Work Services		167,624.69	167,624.69	38,482.86	206,474.87	244,957.73
2260 Instruction and Curriculum Development Services	1,133,428.54	906,720.13	2,040,148.67	1,093,953.01	1,242,098.42	2,336,051.43
2350 Legal and Accounting Services	128,767.52	199,547.35	328,314.87	99,817.17	237,290.23	337,107.40
2420 Medical Services	1,070,453.22	285.62	1,070,738.84	1,073,437.17	4,901.00	1,078,338.17
2440 Nursing Services	88,581.88	1,674,123.54	1,762,705.42	201,147.09	1,866,528.10	2,067,675.19
2700 Student Transportation Services	1,995,029.33	5,114,262.58	7,109,291.91	3,309,866.71	6,180,265.00	9,490,131.71
Total	\$6,257,117.22	\$12,425,727.19	\$18,682,844.41	\$8,142,124.38	\$14,438,424.33	\$22,580,548.71

LEA : 123467303 Spring-Ford Area SD

Printed 11/30/2022 4:23:33 PM

(PRINCIPAL AMOUNTS ONLY)

GOVERNMENTAL FUNDS/ ACTIVITIES

	Short-Term Borrowing	General Obligation Bonds/Notes	Authority Building Obligations	OLTD, Ext Term Fin, Leases	Other Post- Employment Benefits (OPEB)	Compensated Absences	Net Pension Liability	Total
1. Debt at Beginning of Fiscal Year		56,203,000.00		8,794,359.72	14,973,690.00	4,494,221.00	218,884,000.00	303,349,270.72
2. Additional Debt Incurred During Year					91,230.00		19,907,000.00	19,998,230.00
3. Retirements and Repayments		11,134,000.00		1,056,385.64		399,614.00		12,589,999.64
4. Debt at End of Fiscal Year		45,069,000.00		7,737,974.08	15,064,920.00	4,094,607.00	238,791,000.00	310,757,501.08
5. Accreted Interest at End Of Fiscal Year								
6. Total Debt and Accreted Interest		45,069,000.00		7,737,974.08	15,064,920.00	4,094,607.00	238,791,000.00	310,757,501.08
7. Current Portion P&I - Due within 1 year		11,419,000.00		1,113,306.50		1,013,822.00		13,546,128.50
8. Interest Paid during current fiscal year		2,014,341.00		317,142.06				2,331,483.06

(PRINCIPAL AMOUNTS ONLY)

PROPRIETARY FUNDS

	Short-Term Borrowing	General Obligation Bonds/Notes	Authority Building Obligations	OLTD, Ext Term Fin, Leases	Other Post- Employment Benefits (OPEB)	Compensated Absences	Net Pension Liability	Total
1. Debt at Beginning of Fiscal Year					184,000.00		4,035,000.00	4,219,000.00
2. Additional Debt Incurred During Year					10,000.00		366,000.00	376,000.00
3. Retirements and Repayments								
4. Debt at End of Fiscal Year					194,000.00		4,401,000.00	4,595,000.00
5. Accreted Interest at End Of Fiscal Year								
6. Total Debt and Accreted Interest					194,000.00		4,401,000.00	4,595,000.00
7. Current Portion P&I - Due within 1 year								
8. Interest Paid during current fiscal year								

LEA : 123467303 Spring-Ford Area SD

Total Principal and Interest Payments Made by Your School - All Funds

Function	Fund		Principal (910)	Principal (920)	Interest (830)	Total (Principal +Interest)	Misc Other Uses (990)
5110	10	General Fund	11,134,000.00		2,014,340.73	13,148,340.73	
5110	20	Special Revenue Funds					
5110	30	Capital Projects Funds					
5110	40	Debt Service Fund					
5110	90	Permanent Fund					
5120	10	General Fund					
5120	20	Special Revenue Funds					
5120	30	Capital Projects Funds					
5120	40	Debt Service Fund					
5140	10	General Fund					
5140	20	Special Revenue Funds					
5140	30	Capital Projects Funds					
5140	40	Debt Service Fund					
5140	90	Permanent Fund					
Total Debt Payments - Governmental Funds			\$11,134,000.00		\$2,014,340.73	\$13,148,340.73	

Function	Fund		Principal (910)	Principal (920)	Interest (830)	Total (Principal +Interest)
5110	50	Enterprise Fund				
5110	60	Internal Service Fund				
5120	50	Enterprise Fund				
5120	60	Internal Service Fund				
5140	50	Enterprise Fund				
5140	60	Internal Service Fund				
Total Debt Payments - Proprietary Funds						

LEA : 123467303 Spring-Ford Area SD

Printed 11/30/2022 4:23:33 PM

Debt Details
Governmental Funds/ Activities

Debt Category	Debt Issue Date (MM/YYYY)	Principal Amounts Only				Current Portion Due Within One Year (Principal and Interest)	Interest Paid During Fiscal Year
		Debt at Beginning of Fiscal Year	Additions	Reductions / Repayments	Debt at End of Fiscal Year		
General Obligation Bonds/Notes – CIB	04/2020	7,968,000.00		3,994,000.00	3,974,000.00	3,974,000.00	34,816.00
General Obligation Bonds/Notes – CIB	04/2018	7,180,000.00		5,000.00	7,175,000.00	5,000.00	287,100.00
General Obligation Bonds/Notes – CIB	12/2016	16,000,000.00		3,450,000.00	12,550,000.00	3,605,000.00	765,500.00
General Obligation Bonds/Notes – CIB	06/2015	25,055,000.00		3,685,000.00	21,370,000.00	3,835,000.00	926,925.00
Other Long Term Debt/Liabilities		8,794,359.72		1,056,385.64	7,737,974.08	1,113,306.50	317,142.06
Compensated Absences		4,494,221.00		399,614.00	4,094,607.00	1,013,822.00	
Other Post-Employment Benefits (OPEB)		14,973,690.00	91,230.00		15,064,920.00		
Net Pension Liability		218,884,000.00	19,907,000.00		238,791,000.00		
Totals for Debt Entered:		\$303,349,270.72	\$19,998,230.00	\$12,589,999.64	\$310,757,501.08	\$13,546,128.50	\$2,331,483.06

Bond Details
Proprietary Funds

Debt Category	Debt Issue Date (MM/YYYY)	Principal Amounts Only				Current Portion Due Within One Year (Principal and Interest)	Interest Paid During Fiscal Year
		Debt at Beginning of Fiscal Year	Additions	Reductions / Repayments	Debt at End of Fiscal Year		
Other Post-Employment Benefits (OPEB)		184,000.00	10,000.00		194,000.00		
Net Pension Liability		4,035,000.00	366,000.00		4,401,000.00		
Totals for Debt Entered:		\$4,219,000.00	\$376,000.00		\$4,595,000.00		

LEA : 123467303 Spring-Ford Area SD

Printed 11/30/2022 4:23:36 PM

General Fund (10)

Section 1: Tuition/Purchased Services as Reported within Expenditure Detail	Amount
Tuition Reported in General Fund Expenditures 1000-560	11,269,755.01
Purchased Services in General Fund Expenditures 1000-594 and 1000-597	3,140.09
Section 1 Total	\$11,272,895.10

Section 2: Tuition Paid to Institution Types During Fiscal Year	Tuition Paid For Nonspecial Education	Tuition Paid For Special Education	Total
1 1306 Institutions			
2 Institutionalized Children's Programs		3,140.09	3,140.09
3 Juveniles Incarcerated in Adult Facilities			
4 Residential Treatment Facilities			
5 Other Local Education Agencies	5,161.59	1,080,860.37	1,086,021.96
6 Brick and Mortar Charter Schools	1,632,773.28	921,620.28	2,554,393.56
7 Cyber Charter Schools	920,396.61	841,473.07	1,761,869.68
8 Career and Technology Centers	3,549,113.58	16,380.00	3,565,493.58
9 Approved Private Schools		1,589,348.93	1,589,348.93
10 PA Chartered Schools for the Deaf and Blind		5,605.00	5,605.00
11 Private Residential Rehabilitative Institutions		577,498.30	577,498.30
12 Juvenile Detention Centers			
13 Special Program Jointures			
14 Other Tuition Not Included Elsewhere In This Section	16,750.00	112,774.00	129,524.00
Section 2 Total	\$6,124,195.06	\$5,148,700.04	\$11,272,895.10

LEA : 123467303 Spring-Ford Area SD

Printed 11/30/2022 4:23:40 PM

Food Service / Cafeteria Operations Fund (51)

2000 Support Services		<u>Total</u>
400 <u>Purchased Property Services</u>		
430 Repairs and Maintenance Services	12,493.77	
Total Purchased Property Services	\$12,493.77	
600 <u>Supplies</u>		
610 General Supplies	2,913.00	
Total Supplies	\$2,913.00	
Total 2000 Support Services	\$15,406.77	

LEA : 123467303 Spring-Ford Area SD

Printed 11/30/2022 4:23:40 PM

Food Service / Cafeteria Operations Fund (51)

2600 Operation and Maintenance of Plant Services	<u>Elementary</u>	<u>Secondary</u>	<u>Federal</u>	<u>Total</u>
400 <u>Purchased Property Services</u>				
430 Repairs and Maintenance Services			12,493.77	12,493.77
Total Purchased Property Services			\$12,493.77	\$12,493.77
600 <u>Supplies</u>				
610 General Supplies			2,913.00	2,913.00
Total Supplies			\$2,913.00	\$2,913.00
Total 2600 Operation and Maintenance of Plant Services			\$15,406.77	\$15,406.77

Page 171

LEA : 123467303 Spring-Ford Area SD

Printed 11/30/2022 4:23:42 PM

Food Service / Cafeteria Operations Fund (51)

3000 Operation of Non-Instructional Services		Total
100	<u>Personnel Services – Salaries</u>	
100	Personnel Services – Salaries	885,283.32
Total Personnel Services – Salaries		\$885,283.32
200	<u>Personnel Services – Employee Benefits</u>	
210	Group Insurance – Contracted Provider	1,046.55
220	Social Security Contributions	66,445.48
230	PSERS Retirement Contributions	326,578.26
250	Unemployment Compensation	135.97
260	Workers' Compensation	13,416.98
270	Group Insurance – Self-Insurance	274,413.61
291	Other Retirement Plans	12,366.50
Total Personnel Services – Employee Benefits		\$694,403.35
400	<u>Purchased Property Services</u>	
440	Rentals	4,863.36
Total Purchased Property Services		\$4,863.36
500	<u>Other Purchased Services</u>	
530	Communications	2.12
570	Food Service Management	1,583,581.63
Total Other Purchased Services		\$1,583,583.75
600	<u>Supplies</u>	
610	General Supplies	21,180.66
620	Energy	8,611.10
630	Food	239,387.74
Total Supplies		\$269,179.50
700	<u>Property</u>	
740	Depreciation	7,989.00
Total Property		\$7,989.00
800	<u>Other Objects</u>	
810	Dues and Fees	1,742.45
Total Other Objects		\$1,742.45
Total 3000 Operation of Non-Instructional Services		\$3,447,044.73

LEA : 123467303 Spring-Ford Area SD

Printed 11/30/2022 4:23:42 PM

Food Service / Cafeteria Operations Fund (51)

3100 Food Services

	<u>Elementary</u>	<u>Secondary</u>	<u>Federal</u>	<u>Total</u>
100 <u>Personnel Services – Salaries</u>				
100 Personnel Services – Salaries			885,283.32	885,283.32
Total Personnel Services – Salaries			\$885,283.32	\$885,283.32
200 <u>Personnel Services – Employee Benefits</u>				
210 Group Insurance – Contracted Provider			1,046.55	1,046.55
220 Social Security Contributions			66,445.48	66,445.48
230 PSERS Retirement Contributions			326,578.26	326,578.26
250 Unemployment Compensation			135.97	135.97
260 Workers' Compensation			13,416.98	13,416.98
270 Group Insurance – Self-Insurance			274,413.61	274,413.61
291 Other Retirement Plans			12,366.50	12,366.50
Total Personnel Services – Employee Benefits			\$694,403.35	\$694,403.35
400 <u>Purchased Property Services</u>				
440 Rentals			4,863.36	4,863.36
Total Purchased Property Services			\$4,863.36	\$4,863.36
500 <u>Other Purchased Services</u>				
530 Communications			2.12	2.12
570 Food Service Management			1,583,581.63	1,583,581.63
Total Other Purchased Services			\$1,583,583.75	\$1,583,583.75
600 <u>Supplies</u>				
610 General Supplies			21,180.66	21,180.66
620 Energy			8,611.10	8,611.10
630 Food			239,387.74	239,387.74
Total Supplies			\$269,179.50	\$269,179.50
700 <u>Property</u>				
740 Depreciation			7,989.00	7,989.00
Total Property			\$7,989.00	\$7,989.00
800 <u>Other Objects</u>				
810 Dues and Fees			1,742.45	1,742.45
Total Other Objects			\$1,742.45	\$1,742.45
Total 3100 Food Services			\$3,447,044.73	\$3,447,044.73

	<u>Food Service(51)</u>	<u>Child Care Operations(52)</u>	<u>Other Enterprise(58)</u>	<u>Internal Service(60)</u>	<u>Total</u>
2000 <u>Support Services</u>					
2600 Operation and Maintenance of Plant Services	15,406.77				15,406.77
Total Support Services	\$15,406.77				\$15,406.77
3000 <u>Operation of Non-Instructional Services</u>					
3100 Food Services	3,447,044.73				3,447,044.73
Total Operation of Non-Instructional Services	\$3,447,044.73				\$3,447,044.73
TOTAL ACTUAL EXPENDITURES & OTHER FINANCING USES	\$3,462,451.50				\$3,462,451.50

LEA : 123467303 Spring-Ford Area SD

Printed 11/30/2022 4:23:56 PM

Fund	School	School Number	Local Personnel	Local Nonpersonnel	State Personnel	State Nonpersonnel	Federal Personnel	Federal Nonpersonnel	Total	Explanation
10										
	Brooke El Sch	7321	5,147,440.64	1,043,566.42	1,309,636.95	268,647.59	157,985.04	45,818.88	7,973,095.52	
	Evans El Sch	7940	6,283,464.16	1,430,001.69	1,601,985.61	358,818.62	313,753.84	67,364.95	10,055,388.87	
	Limerick El Sch	3358	4,758,397.32	902,147.56	1,204,240.63	226,618.79	104,089.54	31,073.48	7,226,567.32	
	Oaks El Sch	4809	5,408,897.18	1,354,241.67	1,383,922.03	341,063.78	108,784.80	65,295.47	8,662,204.93	
	Royersford El Sch	3364	4,784,523.76	991,016.22	1,217,289.74	248,566.63	265,922.27	42,285.07	7,549,603.69	
	Spring City El Sch	7458	2,466,986.22	411,863.13	624,875.08	103,665.09	140,239.49	21,993.33	3,769,622.34	
	Spring-Ford Intrmd Sch 5th/6th	3365	14,612,193.00	2,820,581.25	3,722,030.34	708,301.66	635,765.13	201,337.22	22,700,208.60	
	Spring-Ford MS 7th Grade Ctr	7817	8,346,495.11	1,735,024.41	2,122,464.30	436,274.24	397,062.47	51,358.50	13,088,679.03	
	Spring-Ford MS 8th Grade Ctr	7818	7,672,510.54	1,554,042.56	1,955,060.56	391,067.71	339,973.66	53,398.67	11,966,053.70	
	Spring-Ford SHS 9-12 Ctr	3367	28,896,853.42	6,618,290.39	7,360,652.72	1,656,515.21	1,453,832.01	310,035.41	46,296,179.16	
	Upper Providence El Sch	7763	6,408,323.82	1,334,187.50	1,628,591.61	333,830.89	212,070.66	54,955.60	9,971,960.08	
Total			94,786,085.17	20,194,962.80	24,130,749.57	5,073,370.21	4,129,478.91	944,916.58	149,259,563.24	