





Altus Schools Enrollment History

October 1st data

2004-05	4050 students
2009-10	3983
2014-15	3587
2017-18	3393
2018-19	3326
2019-20	3351
2020-21	3291 (covid)
2021-22	3479
2022-23	3529



Personnel Additions

- 2 Administrators ½ AES & ½ AIS
½ Bulldog/ ½ Virtual
- 1 Librarian
- 3 Counselors
- 2 Nurses (4 total)
- 1 Resource Officer (4 total)
- 15 Certified Teaching positions



Academics

ALTUS PUBLIC VIRTUAL SCHOOL

ALL Grades

STEM Labs
Robotics Classes
Intro. to Engineering Design
Principles of Engineering
Aerospace Engineering
Speech and Drama
Video & Audio Publishing (BCTV)
Digital Music Production
Archery
Personal Financial Literacy
Physics
10 Advanced Placement Classes at AHS

AJH & AHS
AJH & AHS
AHS
AHS
AHS
AJH & AHS
AHS
AHS
AJH & AHS
AJH
AHS



Activities

ALTUS ELEMENTARY

Little Dribblers

ALTUS INTERMEDIATE

Archery

Bulldog Bucket Brigade

Baseball

Basketball

Cheerleading

Cross Country

Golf

Softball

Tennis

Wrestling (boys and girls)

ALTUS JUNIOR HIGH

National Junior Honor Society

Student Leadership Council

Archery

Powerlifting

Soccer

Volleyball

Wrestling (girls)

ALTUS HIGH SCHOOL

Archery

Chess Club

E-Sports

Ethics Club

Pom Squad

Powerlifting

Volleyball

Winter Guard

Wrestling (girls)



Transportation

4 Shuttle Buses

4 Activity Buses

6 Route Buses

1 Disability Accessibility Bus

1 Disability Accessibility Van

3 Ford Expeditions

4 Resource Vehicles

3 Ag. Education Vehicles





Altus Early Childhood Center

- Addition of Two Saferooms
2 classrooms and 2 sets of restrooms
- Playground and Privacy Fencing
- Renovation of All Restrooms
- Security Cameras
- Secure Access
- Intercom System
- Fire Alarms
- Bus Stop Shelter







Altus Primary School

- Addition of Two Saferooms
2 classrooms and 2 sets of restrooms
- Playground and Privacy Fencing
- Renovation of All Restrooms
- Security Cameras
- Secure Access
- Intercom System
- Fire Alarm
- Bus Stop Shelter
- Parking Lot







Altus Elementary School

- Renovation of All Restrooms
- Security Cameras
- Secure Access
- Intercom System
- Fire Alarm
- Bus Stop Shelter
- Parking Lot

- Addition of Saferooms
 - 3 classrooms and 1 set of restrooms
- Playground and Privacy Fencing

AES Parking Lots



AES Entry and Offices





Rivers Elementary School

- Security Cameras
- Secure Access
- Intercom System
- Fire Alarm
- Playground Equipment
- Parking Lot Improvements



Altus Intermediate School

- Renovation of All Restrooms
- Security Cameras
- Secure Access
- Intercom System
- Fire Alarm
- Privacy Fencing
- Window Replacement

- Addition of Saferoom
STEM Lab & Classroom

Restrooms



Windows and AHS Resealing





Altus Junior High

- District Track Upgrade
- Renovation of All Restrooms
- Security Cameras
- Secure Access
- Intercom System
- Fire Alarm
- Bus Stop Shelter
- Window Replacement

- Addition of Saferoom
Wrestling Room







Altus High School

- Security Cameras
- Secure Access
- Intercom System
- Bus Stop Shelter
- Fire Alarm
- Window Masonry Repair
- Auditorium Renovations
- Agricultural Education Building Renovations
- Band Hall Addition
- Cafeteria Renovations
- Parking Lots
- Swimming Pool Renovations
- Gym Renovations
- Kiwanis Park Renovations and Addition of Artificial Turff

AHS Cafeteria







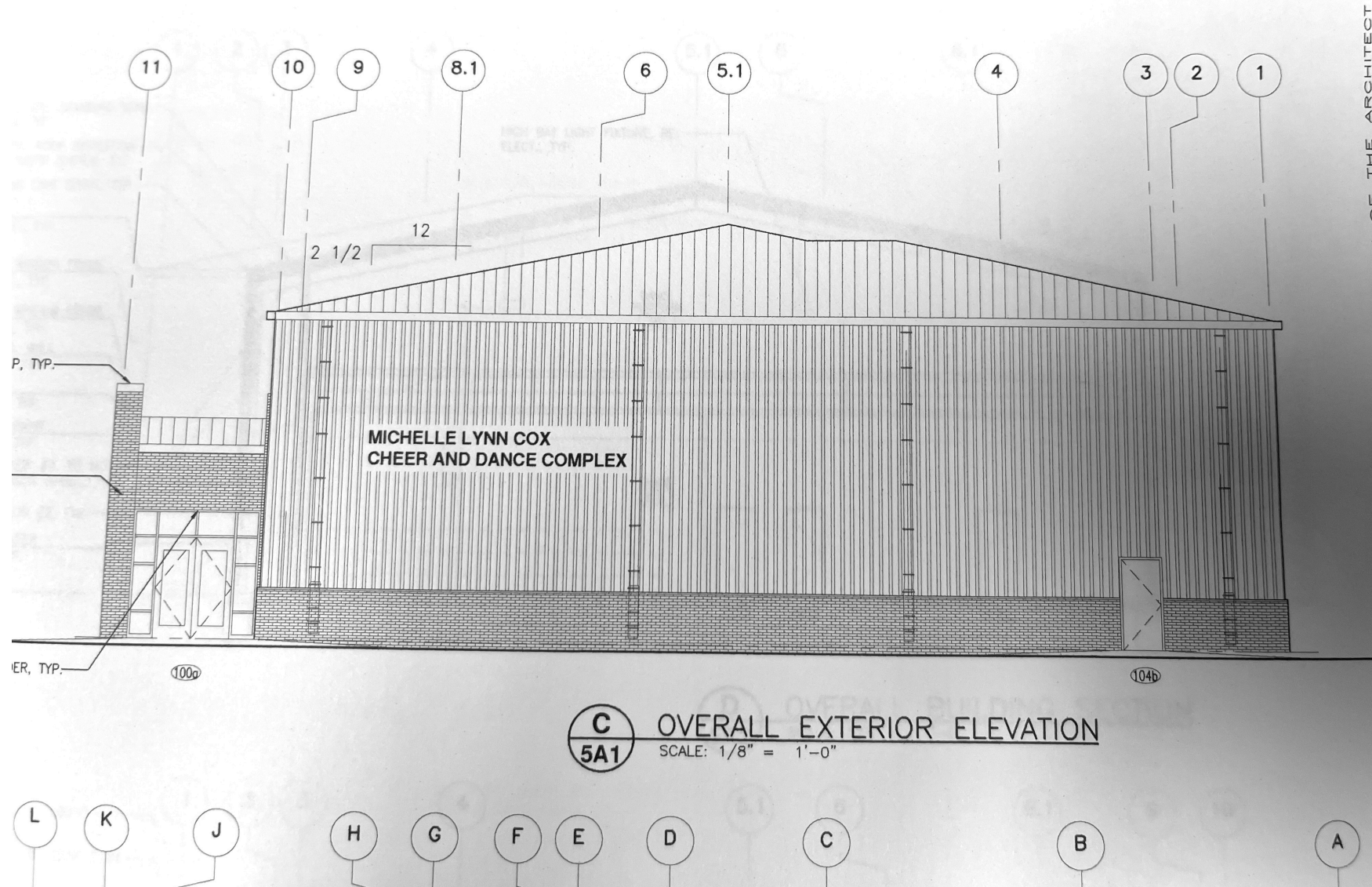
Heating and Air in High School Gymnasium



Linda Wiginton Aquatic Center

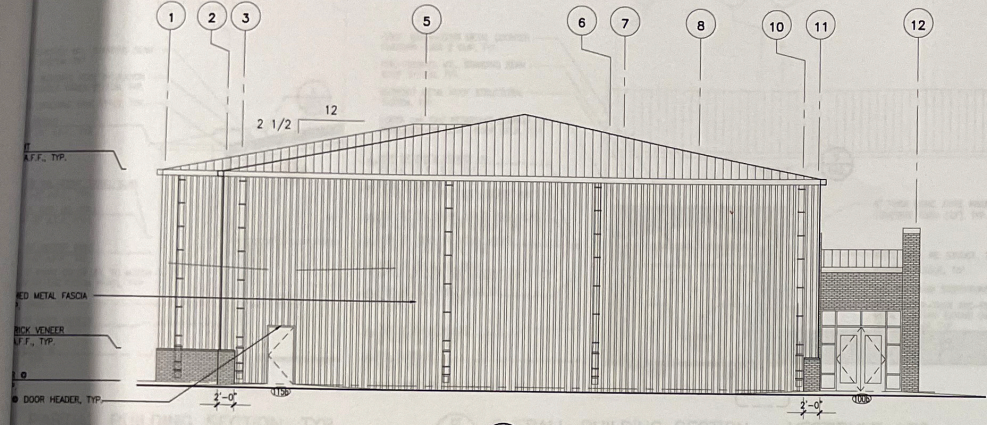


Michelle Lynn Cox Cheer and Dance Complex

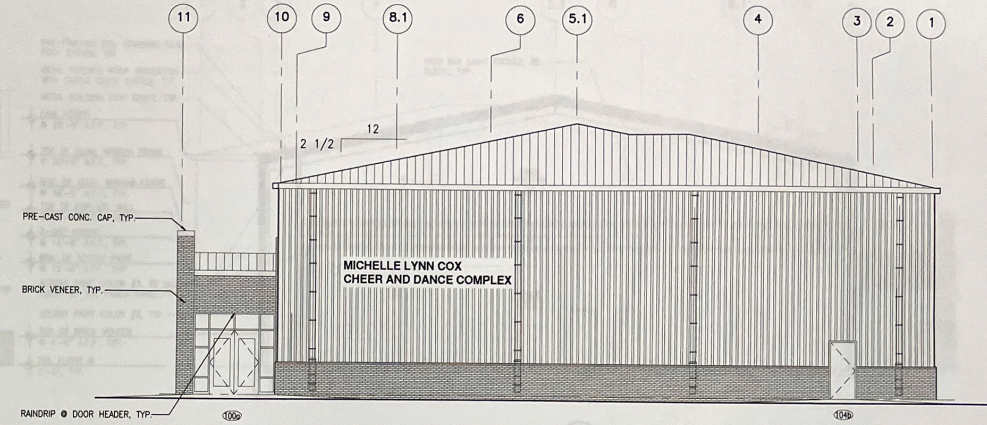




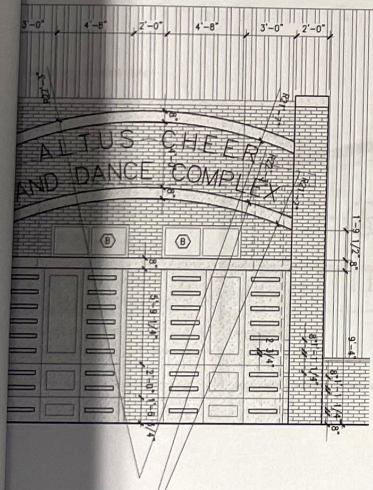
DRAWING IS THE PROPERTY OF CWA GROUP. THE DRAWING(S) OR INFORMATION DERIVED SHALL NOT BE REPRODUCED OR USED WITHOUT WRITTEN PERMISSION OF THE ARCHITECT.



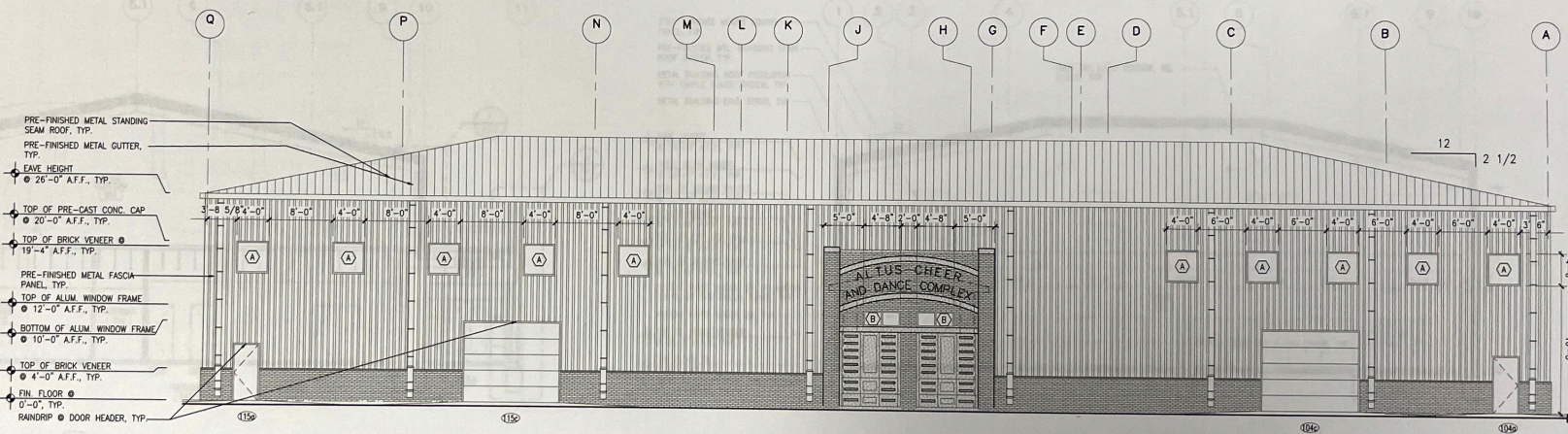
D OVERALL EXTERIOR ELEVATION
5A1 SCALE: 1/8" = 1'-0"



C OVERALL EXTERIOR ELEVATION
5A1 SCALE: 1/8" = 1'-0"



E ENLARGED ENTRY ELEVATION
5A1 SCALE: 1/4" = 1'-0"



B OVERALL EXTERIOR ELEVATION
5A1 SCALE: 1/8" = 1'-0"

GENERAL SECTION/ DETAIL NOTE:

NOTES IN ELEVATIONS/SECTIONS ARE CONSIDERED TYPICAL THROUGHOUT ELEVATIONS AND BUILDING SECTION DETAILS UNLESS OTHERWISE NOTED. IF APPARENT CONTRADICTION ENCOUNTERED, THE MOST STRINGENT REQUIREMENT WILL APPLY. TYPICAL REFER TO MPEP AND STRUCT. FOR THE SIZE, LOCATION, MOUNTING HEIGHT, MOUNTING METHOD AND PROTECTION OF THE SAFETY LEVER. TYP.

CONTRACTOR TO FURNISH AND INSTALL PRE-FINISHED METAL DOWNSPOUT @ 25'-0" O.C. ADJUST ACCORDINGLY TO BYPASS WINDOWS AND DOORS. TYP.

CONTRACTOR TO FURNISH AND INSTALL FIRE RESISTANT WOOD BLOCKING @ EXTERIOR DIMENSIONAL LETTERS AND LOGO. TYP.

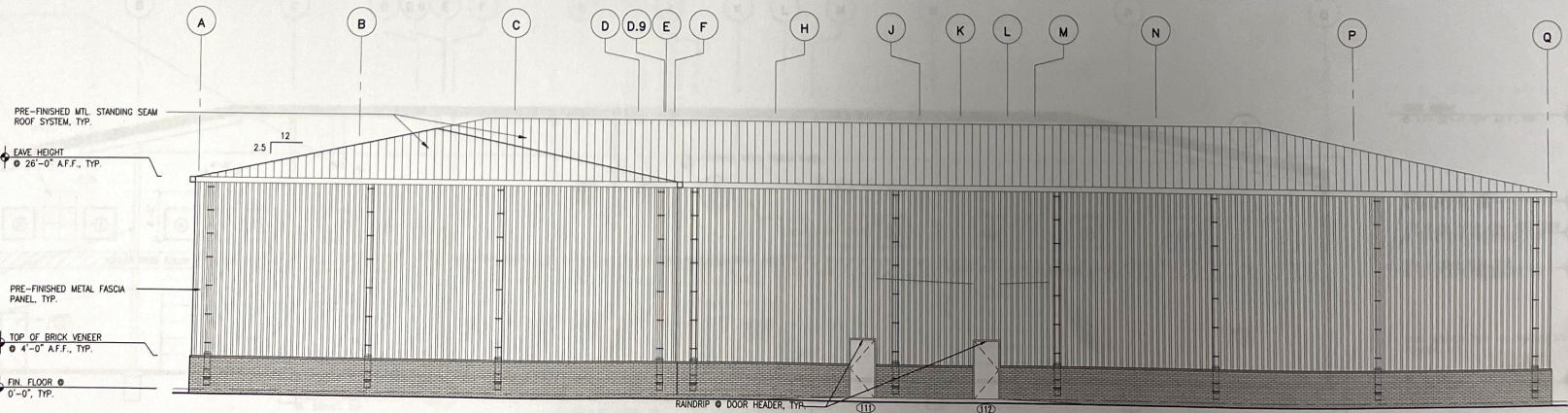
CONTRACTOR TO FURNISH AND INSTALL CONTINUOUS WATER TIGHT PRE-FINISHED METAL CLOSURE TRIM AND FLASHING BETWEEN BRICK VENEER AND METAL FASCIA. TYP.

BRICK VENEER @ 4'-0" A.F.F., TYP.

CONTRACTOR TO FURNISH AND INSTALL ANODIZED ALUMINUM RAINDRIP @ EXTERIOR DOOR HEADER. TYP.

R30 MIN CONTINUOUS INSULATION AT ROOF AND R21 MIN CONTINUOUS INSULATION @ EXTERIOR WALL.

1-1/2" O.D. STEEL GUARDRAIL AND VERTICAL SUPPORT SPACE @ 5'-0" O.C. FIELD PAINTED. TYP.



A OVERALL EXTERIOR ELEVATION
5A1 SCALE: 1/8" = 1'-0"



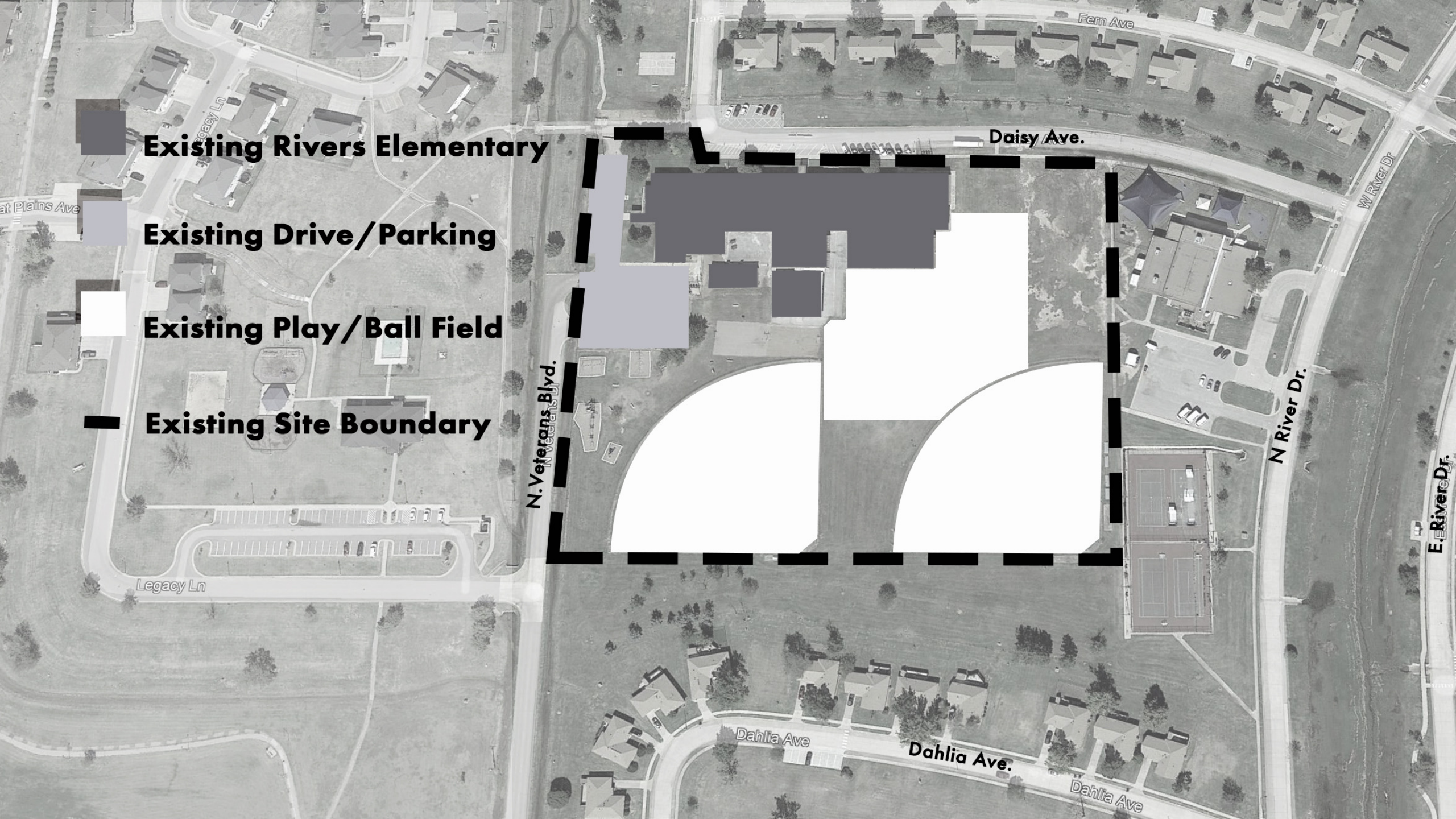




Rivers Elementary School

Public Schools on Military Installations is a grant opportunity from the Office of Local Defense Community Cooperation.

Rivers Elementary was granted a NEW build.



Existing Rivers Elementary

Existing Drive/Parking

Existing Play/Ball Field

Existing Site Boundary

Daisy Ave.

Fern Ave.

W River Dr.

N River Dr.

E River Dr.

N. Veterans Blvd.

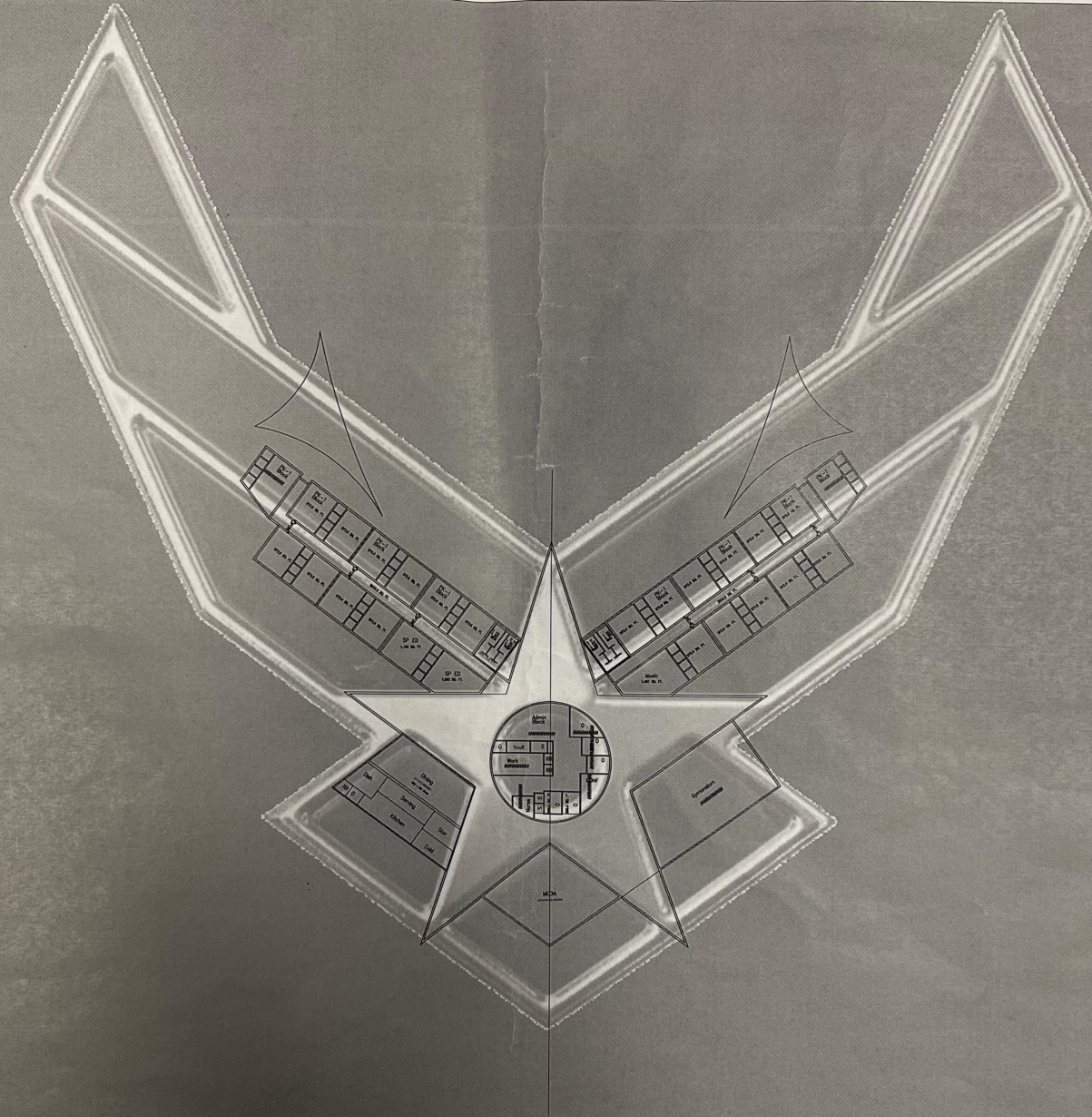
Legacy Ln

Dahlia Ave

Dahlia Ave.

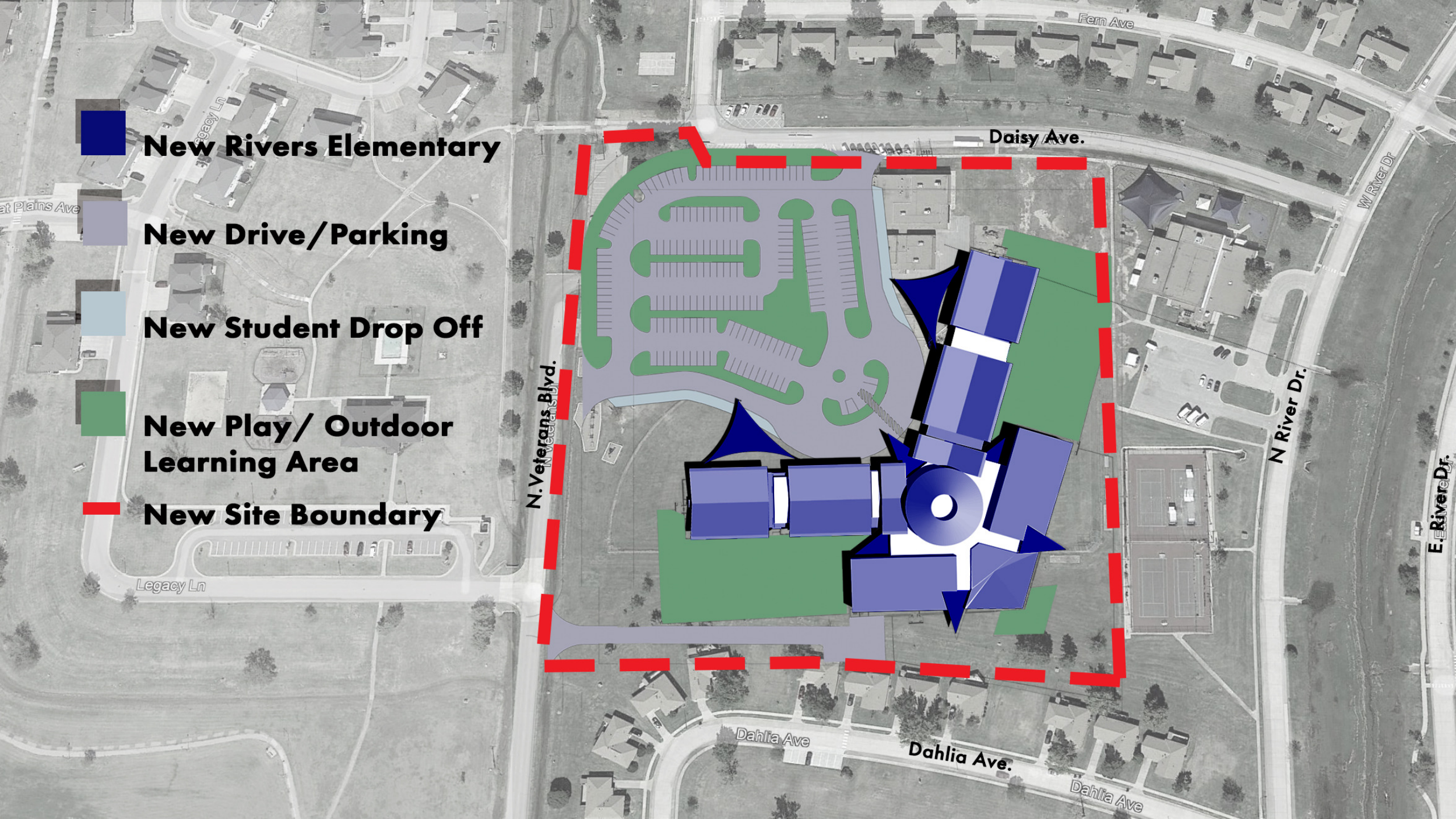
Dahlia Ave

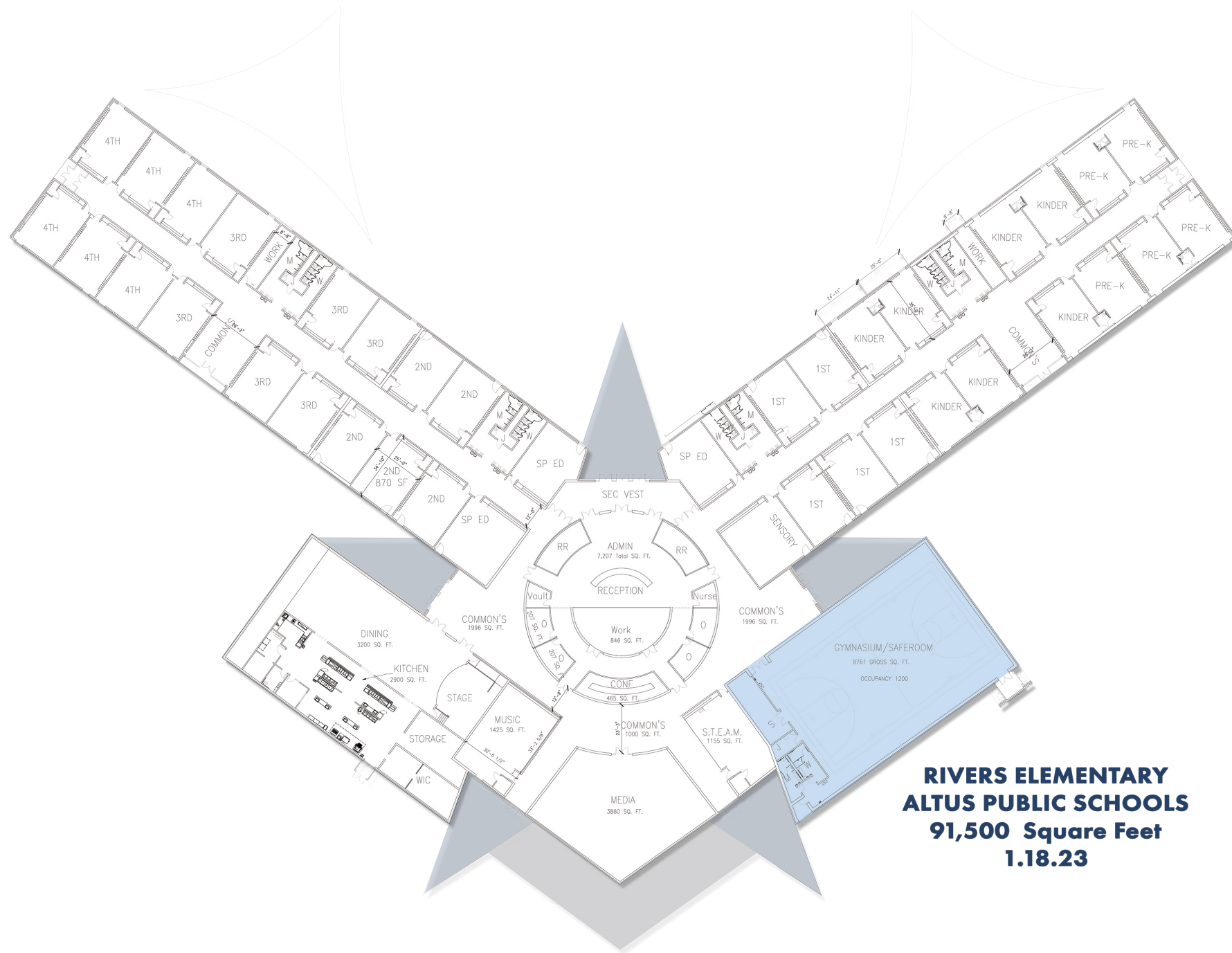
at Plains Ave



U.S. AIR FORCE

-  **New Rivers Elementary**
-  **New Drive / Parking**
-  **New Student Drop Off**
-  **New Play / Outdoor Learning Area**
-  **New Site Boundary**





**RIVERS ELEMENTARY
ALTUS PUBLIC SCHOOLS
91,500 Square Feet
1.18.23**