

Central Intermediate School

CIS Committee Recommendations

November 20, 2017



Interior Conditions



Figure 2-9



Figure 2-10

Interior Conditions



Figure 5-7



Figure 5-15

Interior Water Damage



Figure 6-7



Figure 7-6

Bathrooms



Figure 2-15



Figure 2-16

ADA Compliance Issues



Figure 2-17



Figure 2-18

Flooring



Figure 5-2



Figure 5-3



Figure 5-6

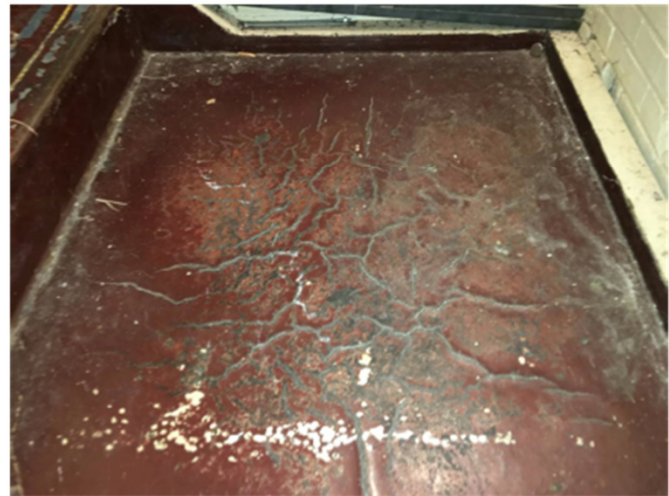


Figure 5-8



Figure 5-13



Figure 5-12



Figure 5-9

Interior Walls/Ceilings



Figure 6-3



Figure 6-1

Exterior Deterioration



Figure 3-1



Figure 3-7

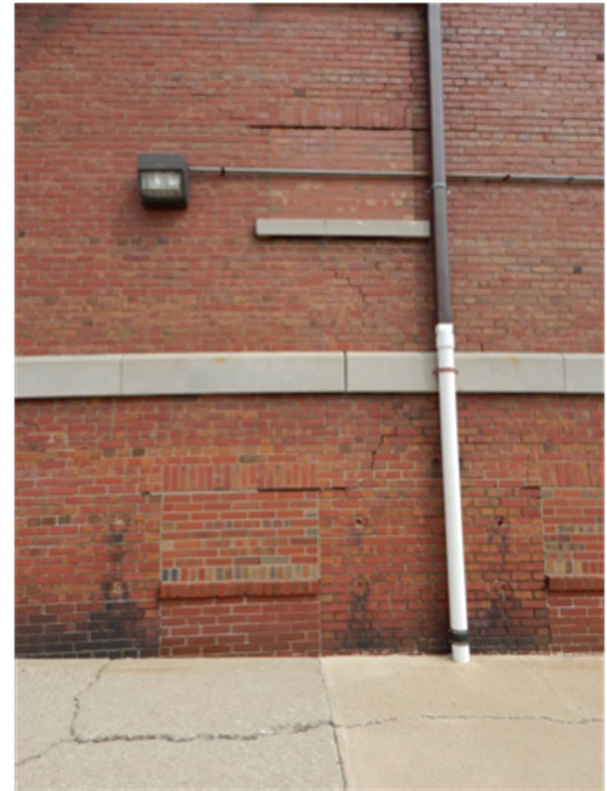


Figure 3-3

Exterior Continued

The terra cotta detail is cracked and damaged and many of the mortar joints are missing or cracked. (Figs. 3-8, 3-9, 3-10, 3-11)



Figure 3-8



Figure 3-10



Figure 3-14



Figure 3-17



Figure 3-12



Figure 3-16

Roofing Condition

Some of the cap sheet is detached. (Fig. 13-5)



Figure 13-5

Some terminations are open. (Fig. 13-7, 13-8)



Figure 13-7



Figure 7-4



Figure 7-5

Committee Recommendation

- New 5-6 Building Should Be Built
- To Be Built on New, Undetermined Site
- Identify Plan that Preserves Current Building in Some Manner
- Relieve BOE of Costs Associated with Owning and Maintaining Preserved Portion

BOE Action Steps

- Identify New School Location
- Determine Timeline For Construction
- Including Asking Community For Support
- Identify Potential Partner(s) to Ensure a Level of Building Preservation
- Identify Any Steps That Would Preserve OJ Work Auditorium

Presentation Prepared By
Michelle Boni and
Michael Foore