



BOARD OF TRUSTEES

Earl Mathis	President
Connie McAda	Vice President
Dana Bohlar-Schroeder	Secretary
Bryan Douget	Trustee
Peggy Ellis	Trustee
Debra Fields-Bell	Trustee
Jan Reddoch	Trustee

SWEENY ISD PARTICIPANTS

Dr. Tory Hill	Superintendent
Amy Pope	Assistant Superintendent
Amy Carter	Chief Financial Officer
Charolet Kremmer	Executive Director of Teaching & Learning
Les Kluttz	Executive Director of Support Services
Mark Manley	CTE Coordinator
William Mader	Sweeny High School Principal
David Smothers	Sweeny Junior High School Principal
Michael Heinroth	Sweeny Elementary School Principal

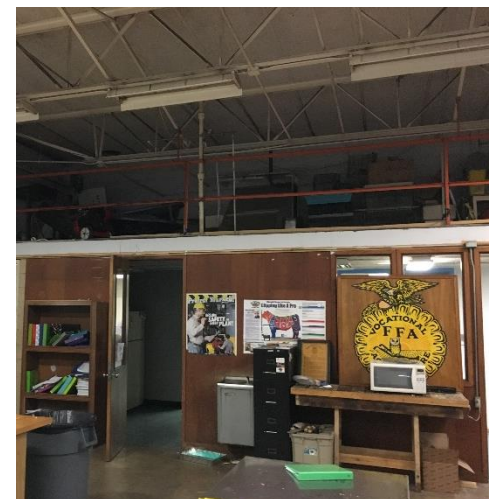
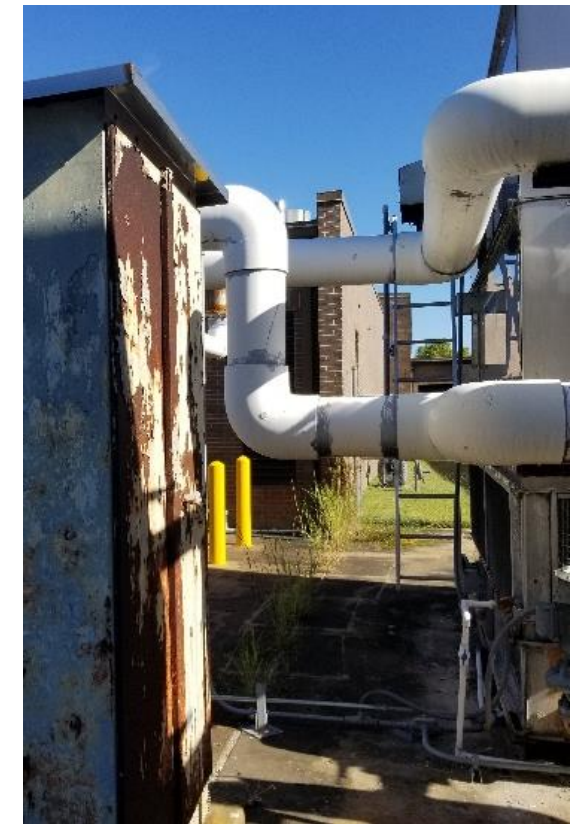
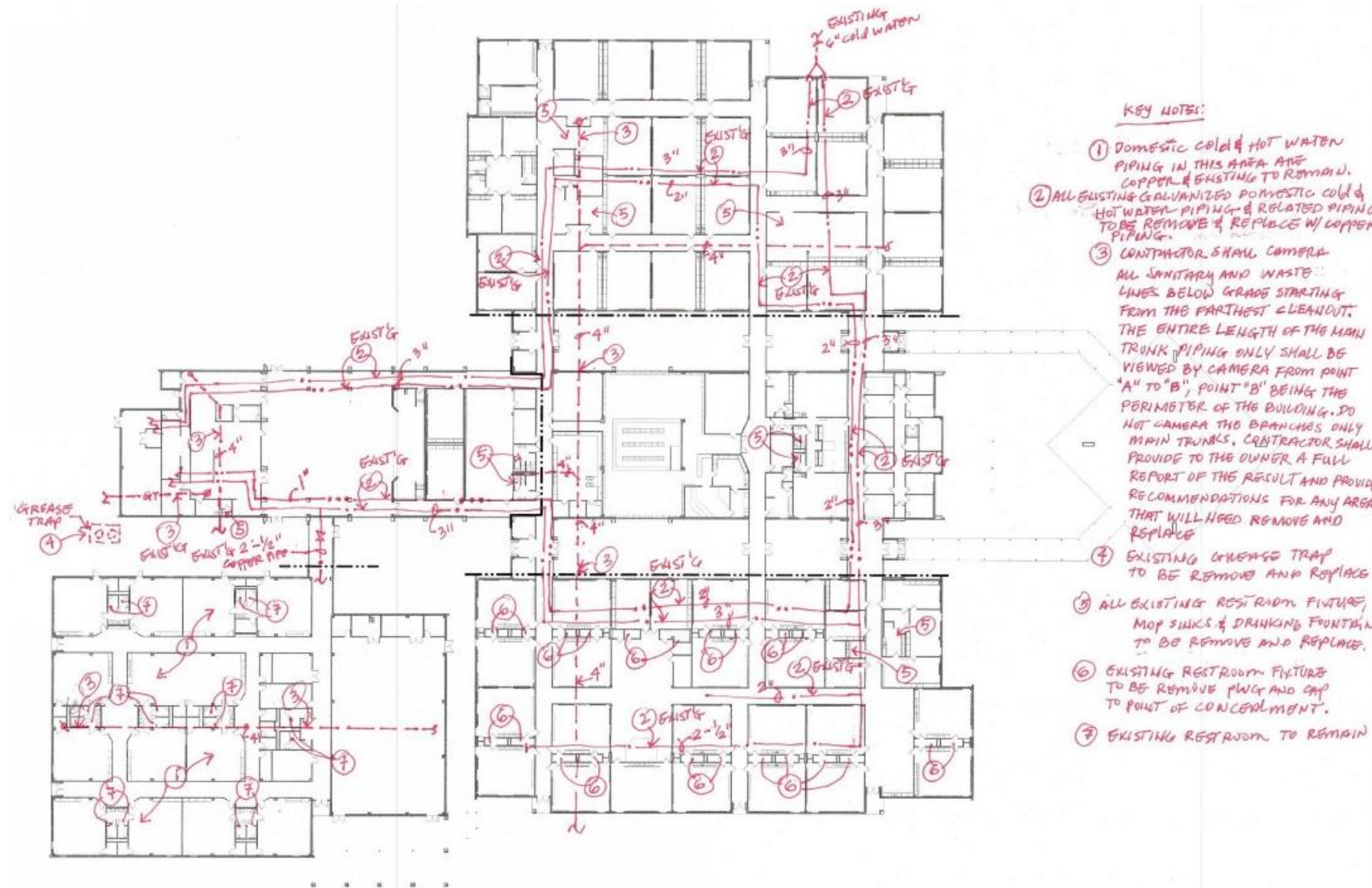
SWEENY ISD CTE TEACHERS

Windy Byrd
James Howell
Scott Jones
Douglas Kubala
Maria Meador
Lauren Prine
Hector Rocha
Curtis Schmidt
Nicole Scoggins
Mollie Webber

PROJECT TEAMS

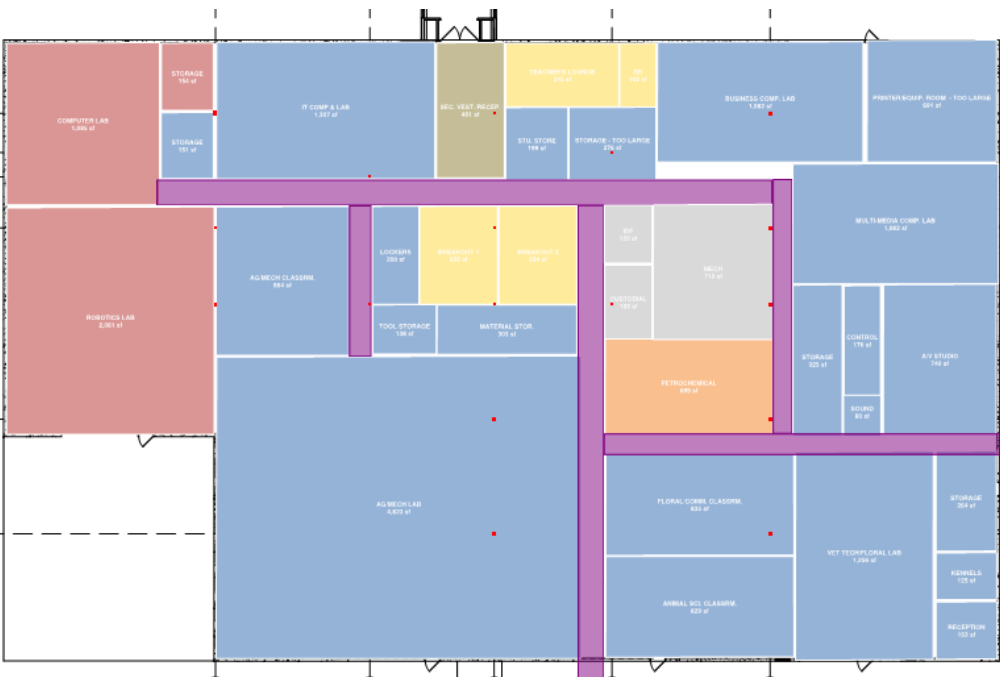
Stantec	Architects
Laura Flannery Sachtleben, AIA, LEED AP	Sr. Principal
Melissa Turnbaugh, AIA, NCARB	Principal
Doug Joder	Sr. Project Manager
Karla Castillo, NCARB	Project Architect
Stantec	Civil Engineers
Mehdi Nezami, P.E.	Principal
Stantec	MEP Engineers
Gary Poole	Principal
AG&E Structural Engenuity	Structural Engineers
John Kubala, P.E.	Managing Principal
BAI Inc	Acoustical Engineers
Richard Boner	Principal
Datacom	Technology Engineers
Robbie Grubbs, RCDD	Senior Technology Design Consultant



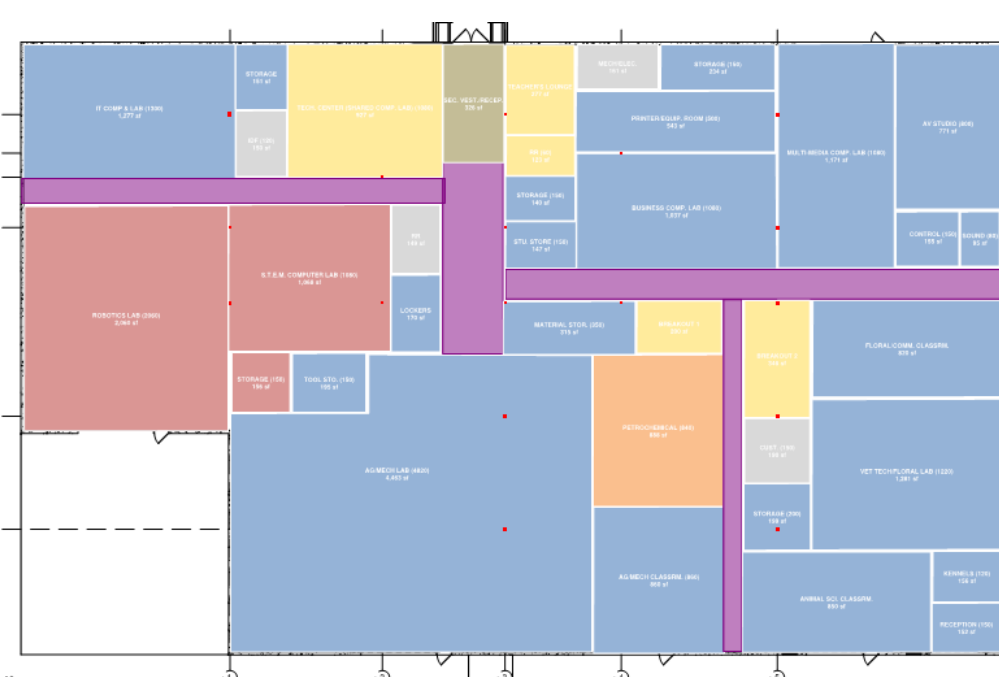


DISTRICT CTE - PROGRAM SUMMARY

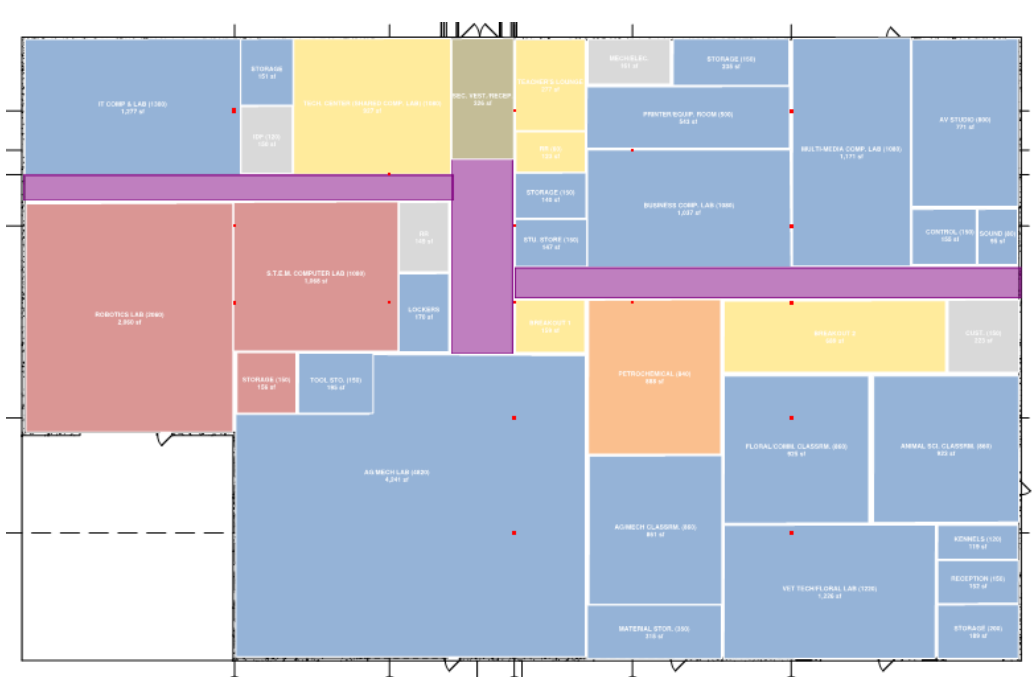
						Total SF	Teaching Stations	Student Capacity	Floor Location
	Space Types								
	BUSINESS & INDUSTRY					15,948	6	144	
	Agriculture Mechanics					6,929			
	Veterinary Technology					3,241			
	Business					1,512			
	Information Technology					2,032			
	Multi-Media					2,234			
	SCIENCE, TECHNOLOGY, ENGINEERING & MATH					2,811	1	24	
	Engineering					2,811			
	PUBLIC SERVICE					3,640	2	48	
	Health Science					3,640			
	PETROCHEMICAL					798	1	12	
	Welding					798			
	INSTRUCTIONAL SUPPORT SPACES					493	1	8	
	Collaboration					493			
	ADMINISTRATIVE SPACES					371	0	0	
	Secure Vestibule / Reception					287			
	Teachers Restroom					84			
	FACILITY SUPPORT SPACES					479	0	0	
	Custodial, Storage and Restroom, IDF, Electrical					151			
						TOTAL PROGRAM NSF	24,540	11	236
						<i>Proposed Circulation (25%)</i>	6,135		
						TOTAL PROPOSED GSF	30,675		



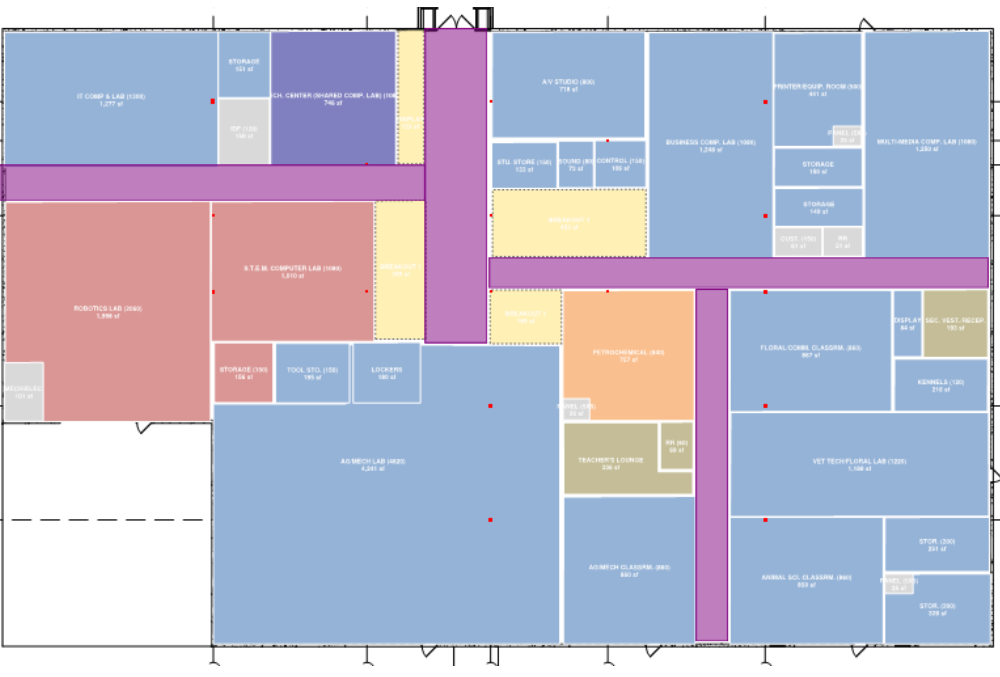
Option 1



Option 4



Option 6



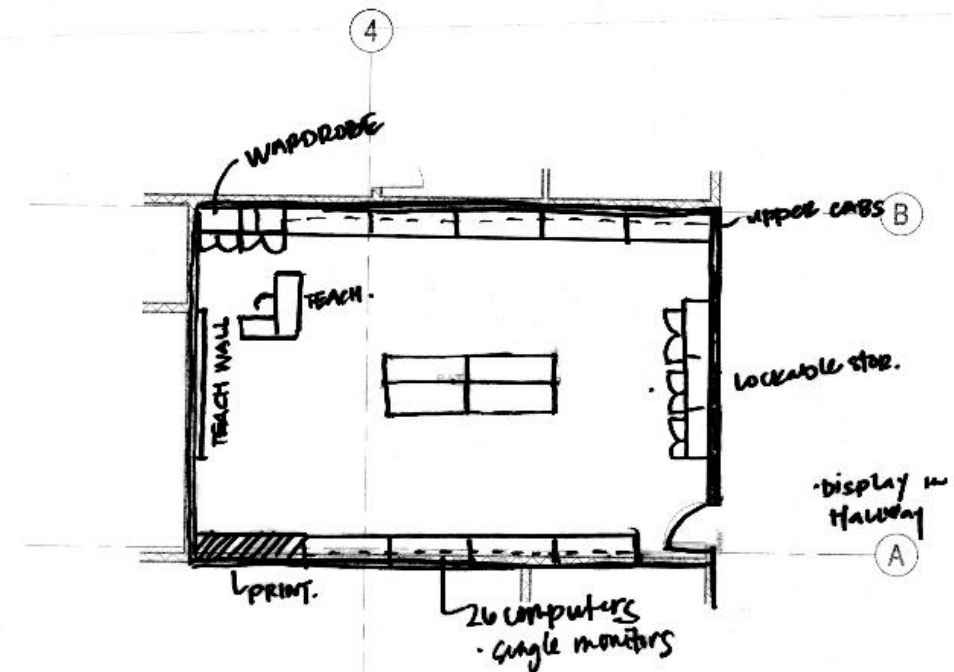
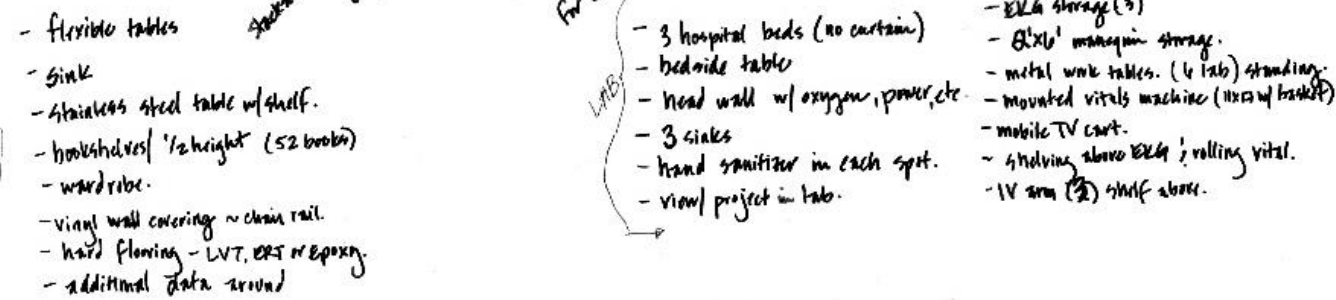
Option 11



Option 13

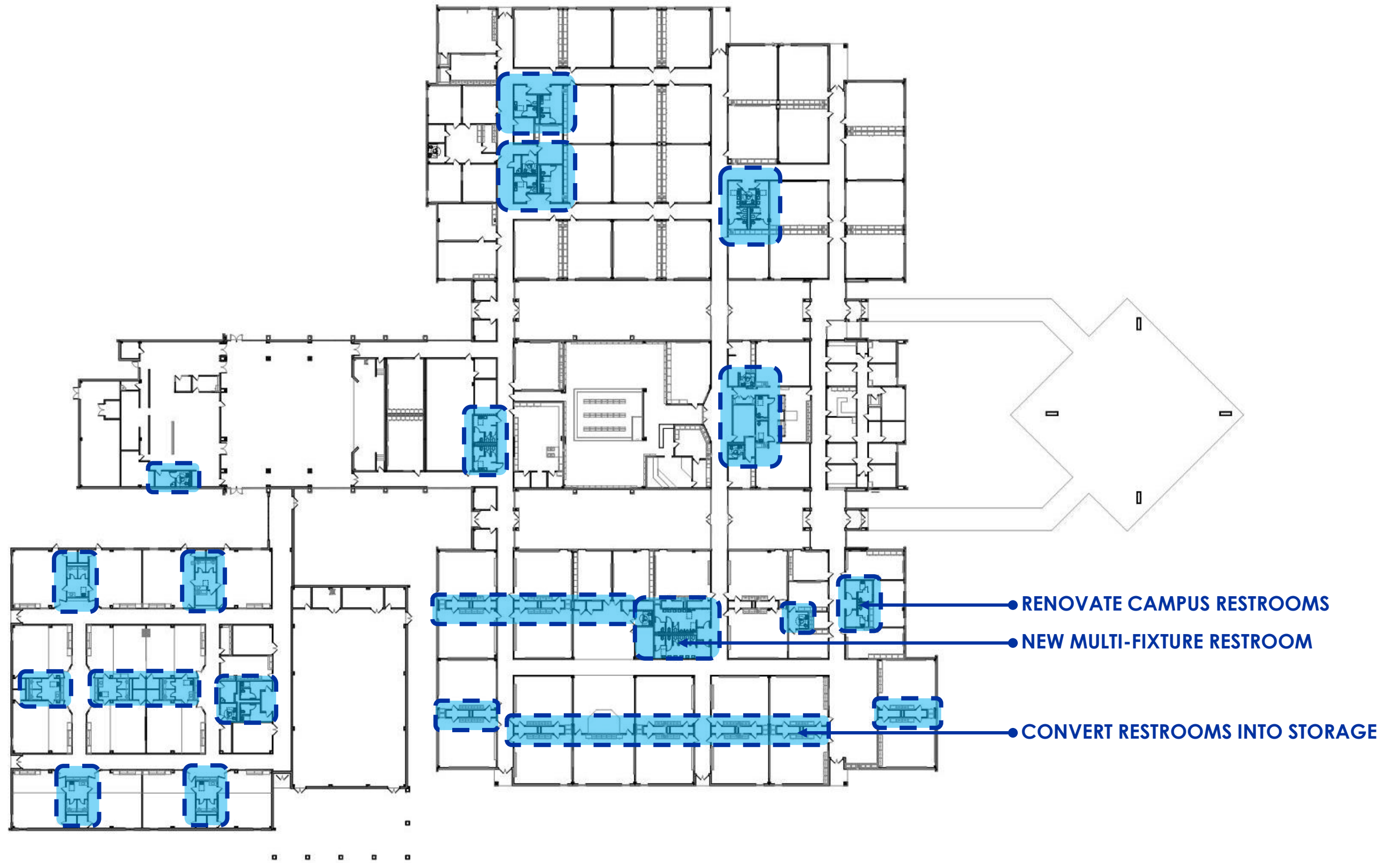


Option 15





ELEMENTARY & JUNIOR HIGH





Architectural Views | Typical Elementary Classroom - **BEFORE**



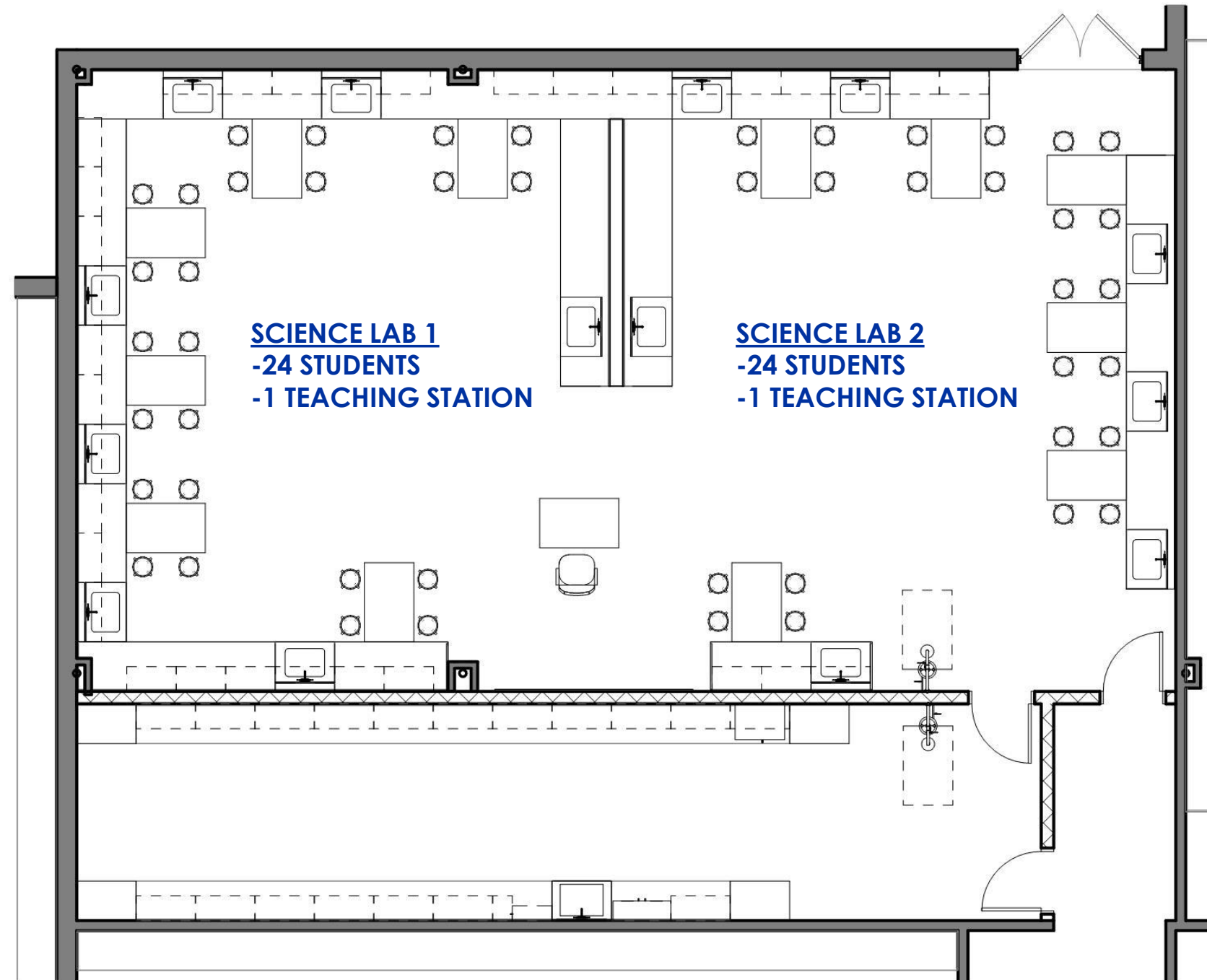
Architectural Views | Renovated Elementary School Classroom

RENOVATION FOR NEW SCIENCE LAB

RENOVATE CAMPUS RESTROOMS

INFILL STEPPED COURTYARD

REPAIR FLOOR AT KITCHEN



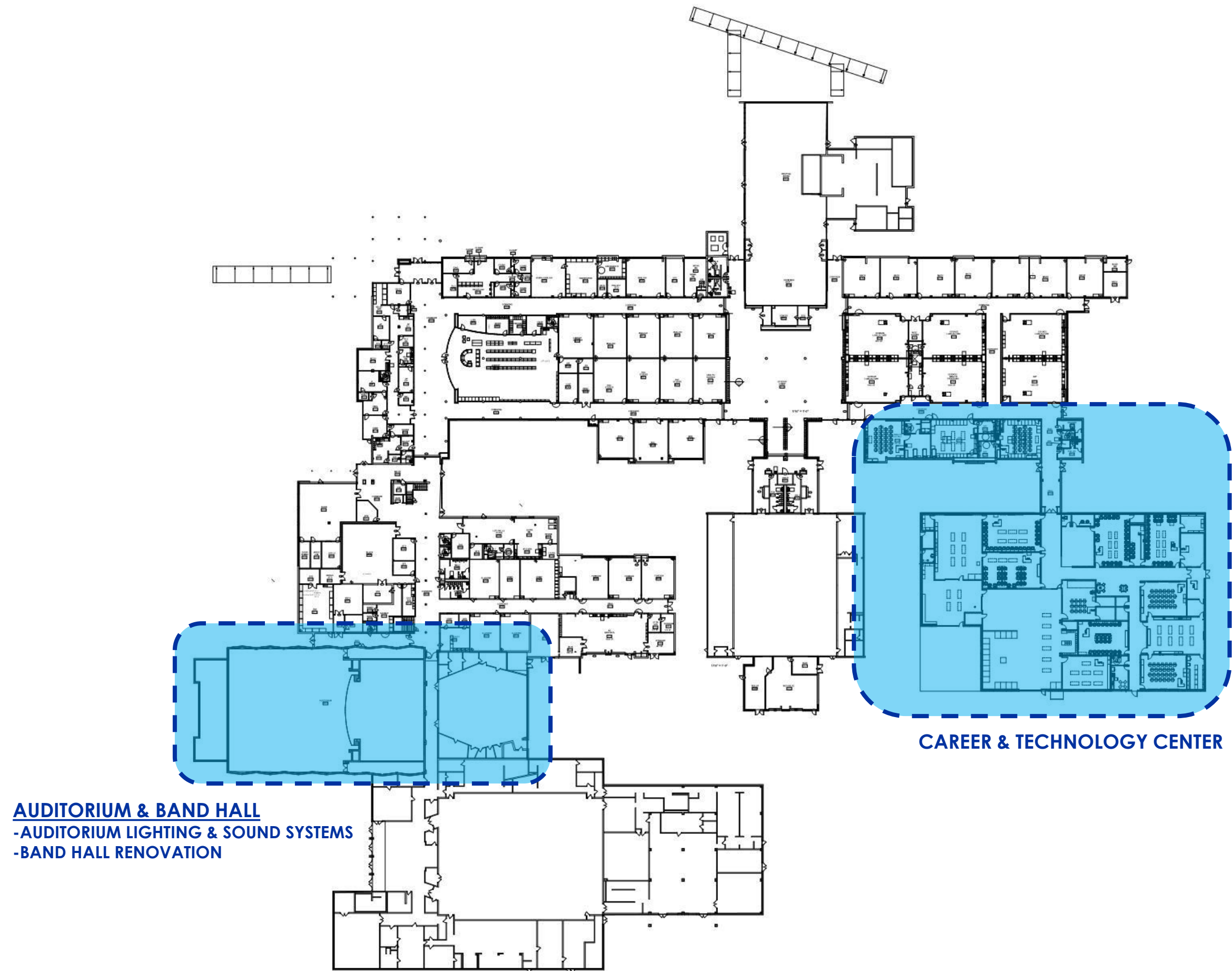


Architectural Views | Junior High – Existing Ag Shop



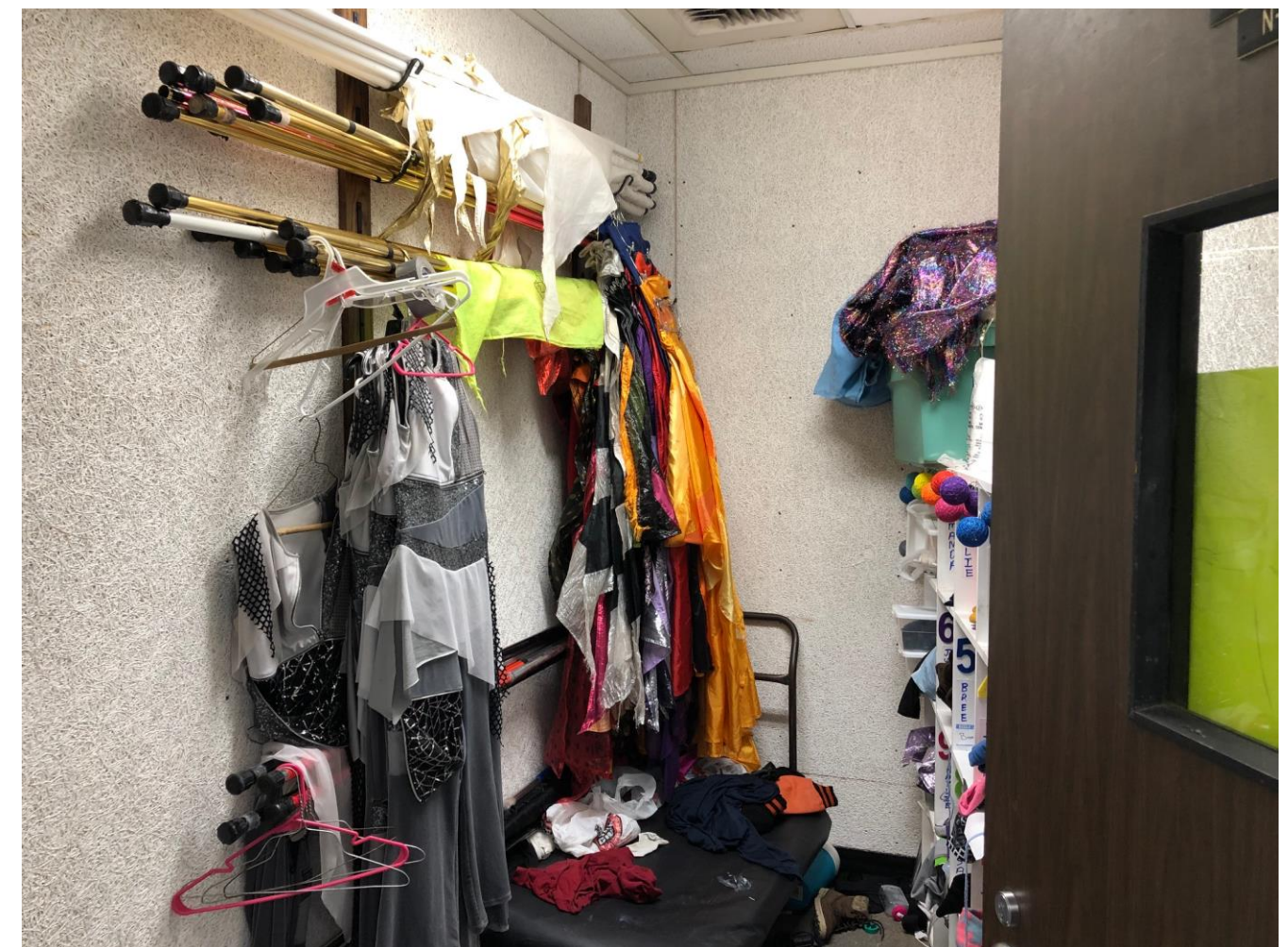
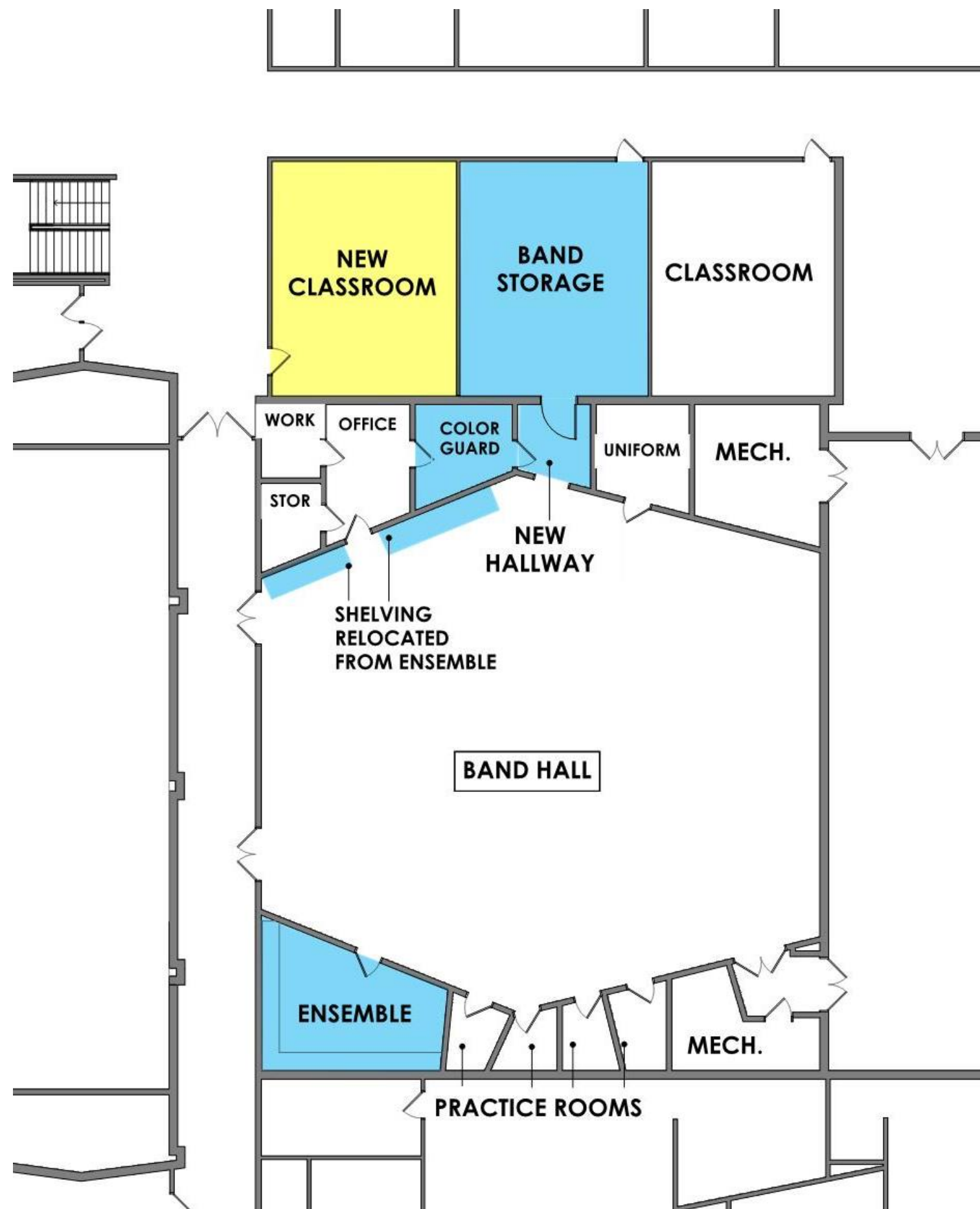
Architectural Views | Junior High New Science Lab



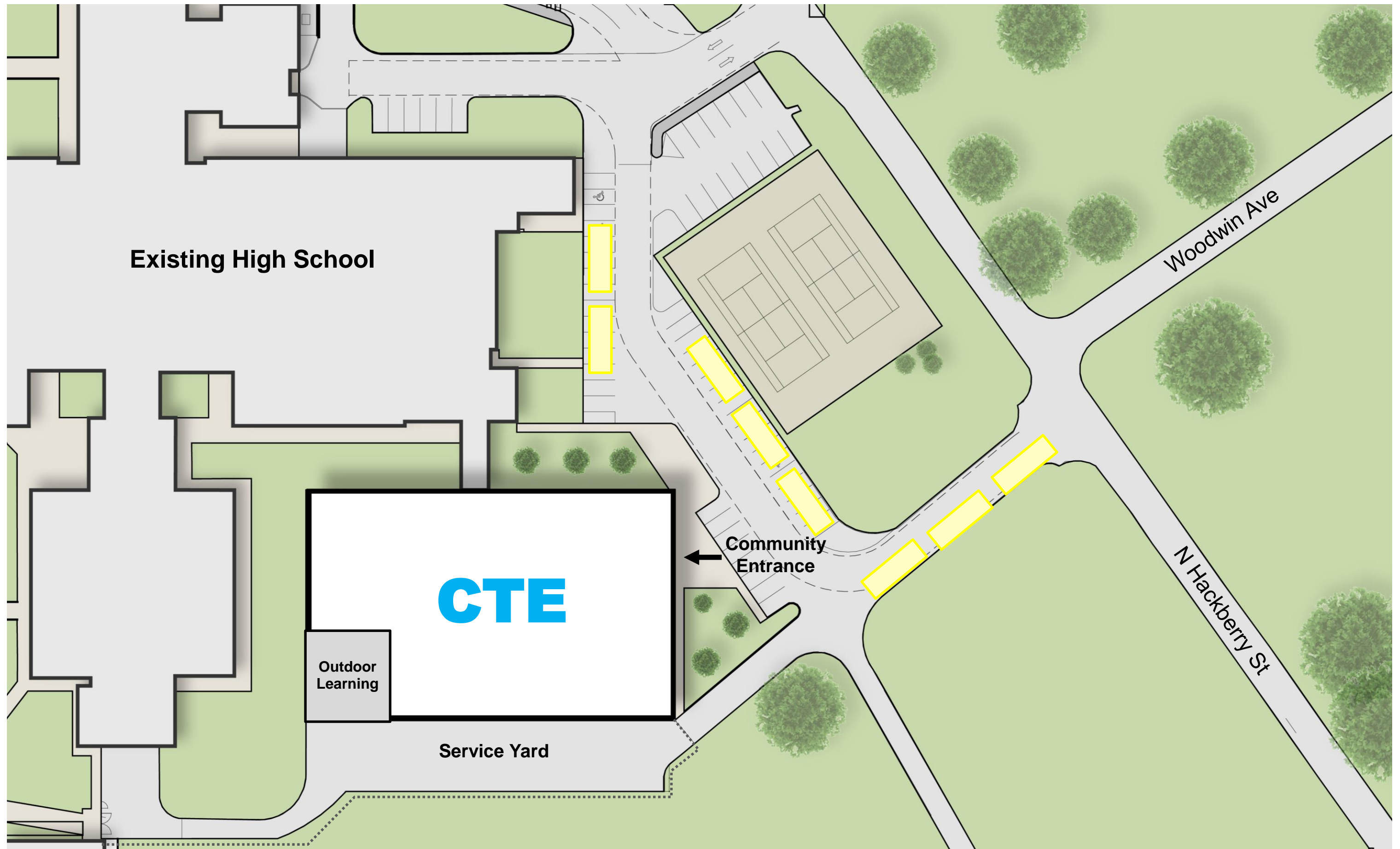


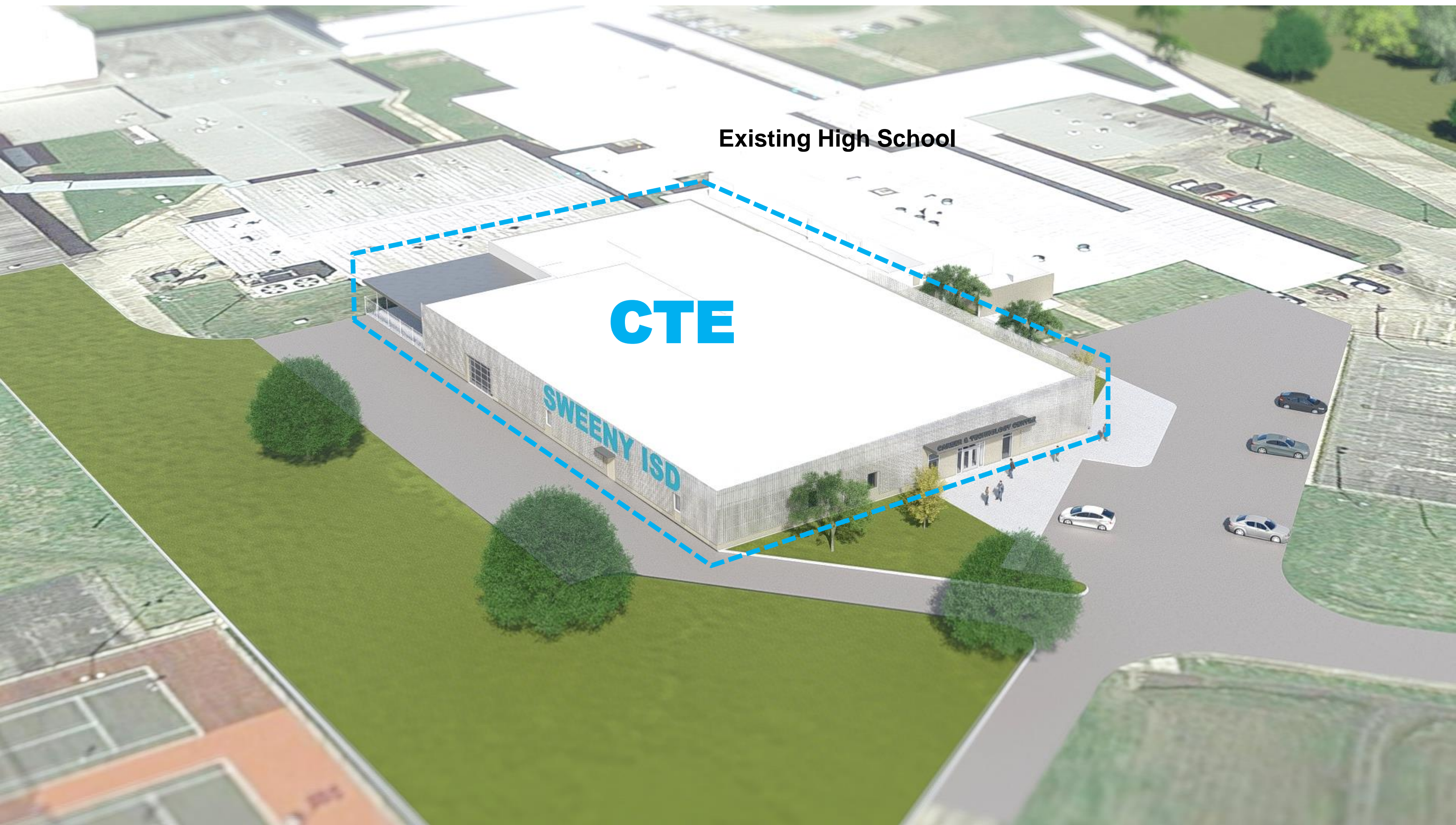
AUDITORIUM & BAND HALL
-AUDITORIUM LIGHTING & SOUND SYSTEMS
-BAND HALL RENOVATION

CAREER & TECHNOLOGY CENTER



Architectural Drawings | Band Hall



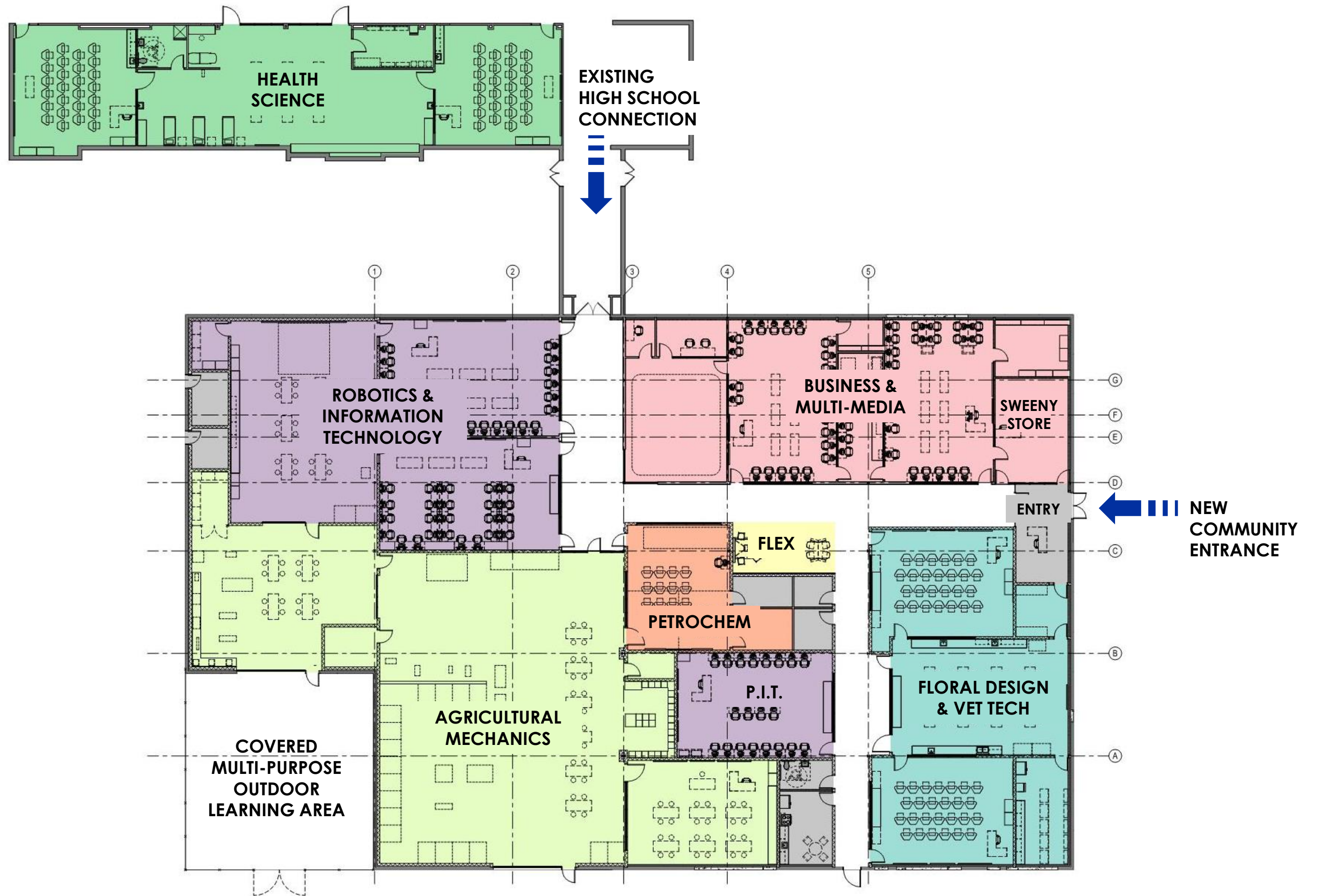


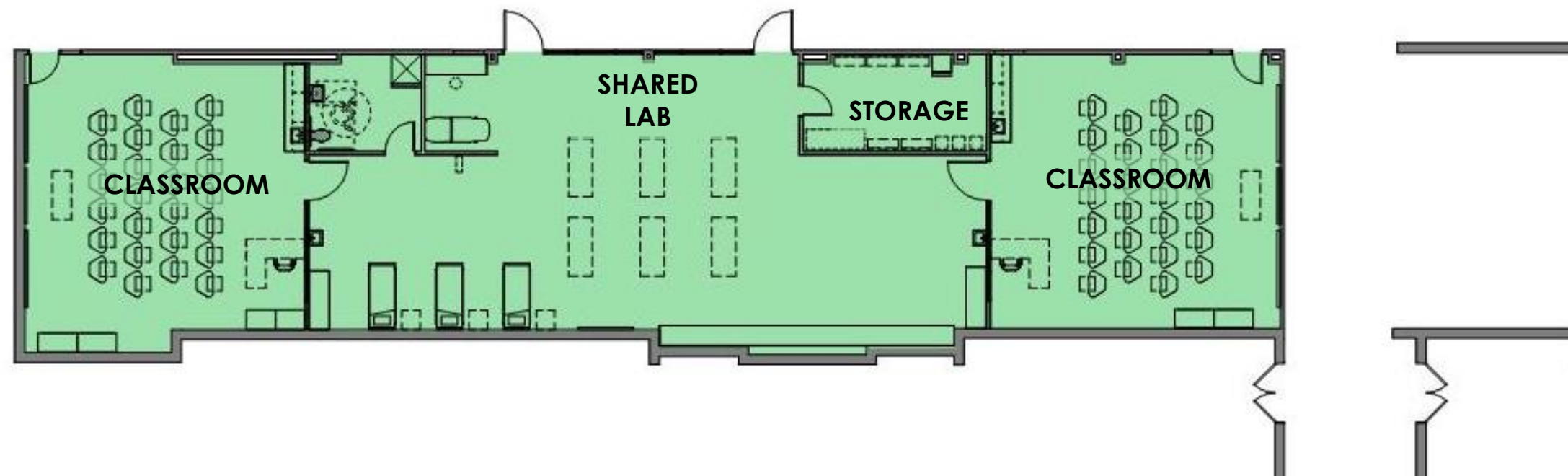
Existing High School

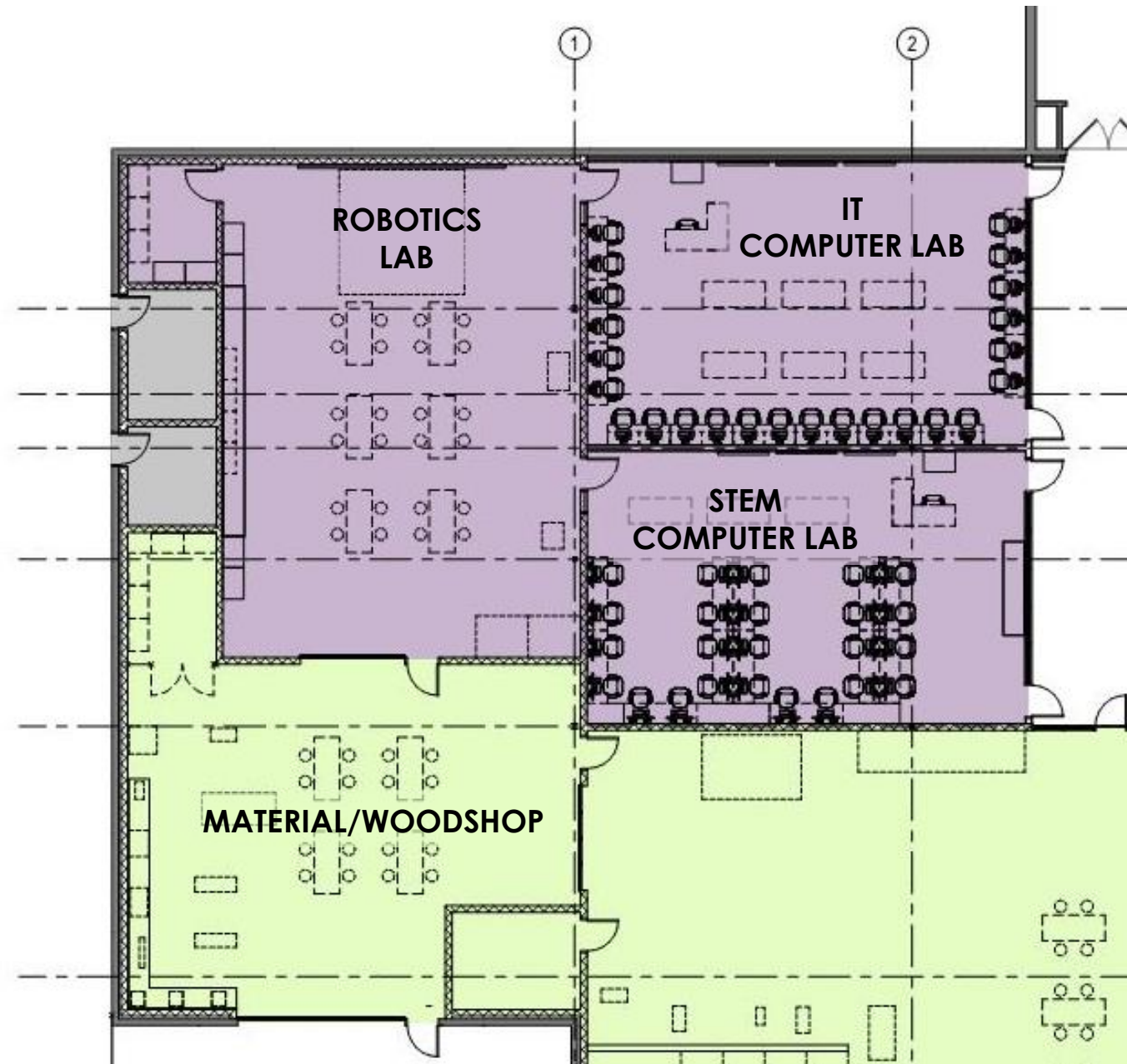
CTE

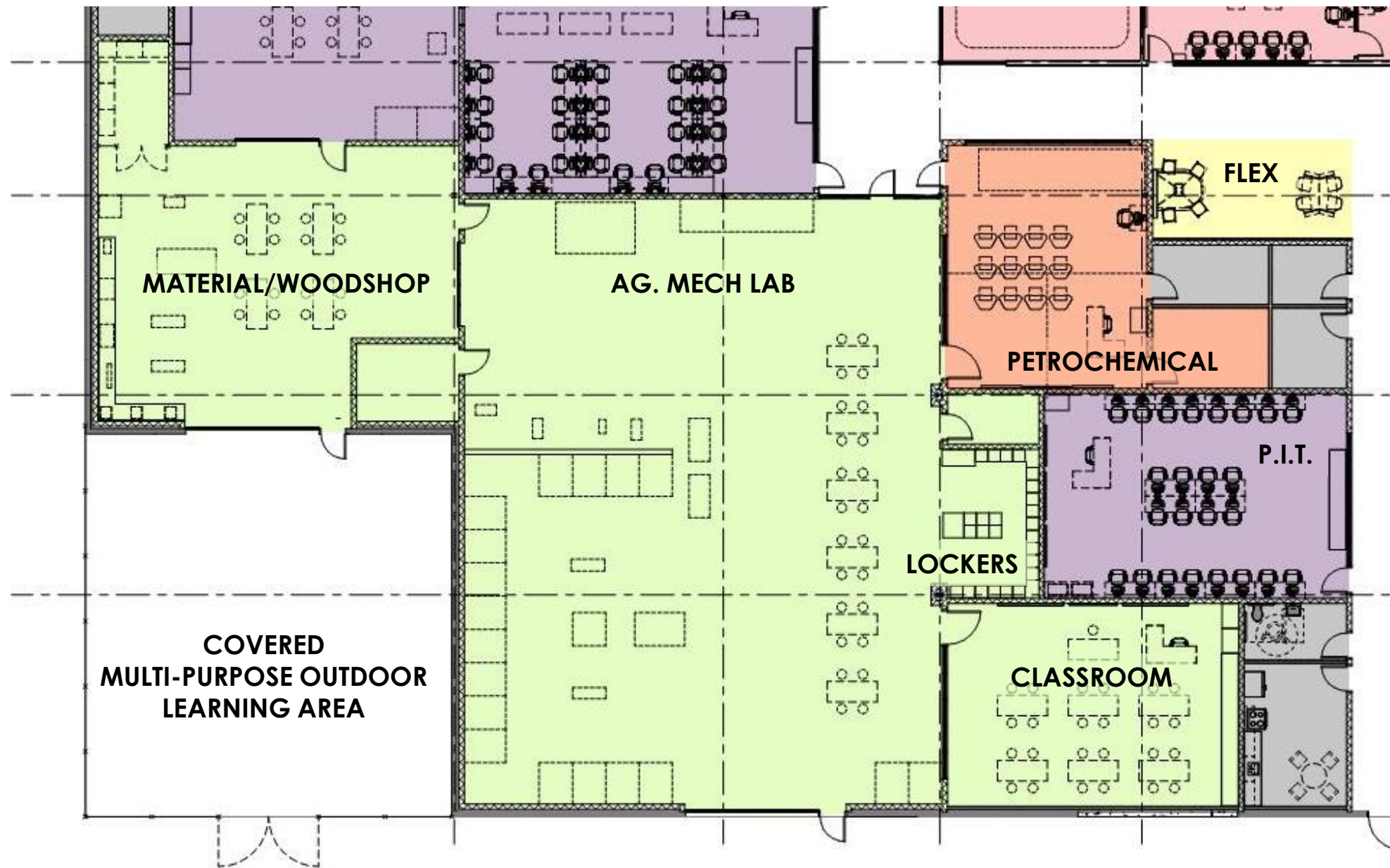
SWEENY ISD

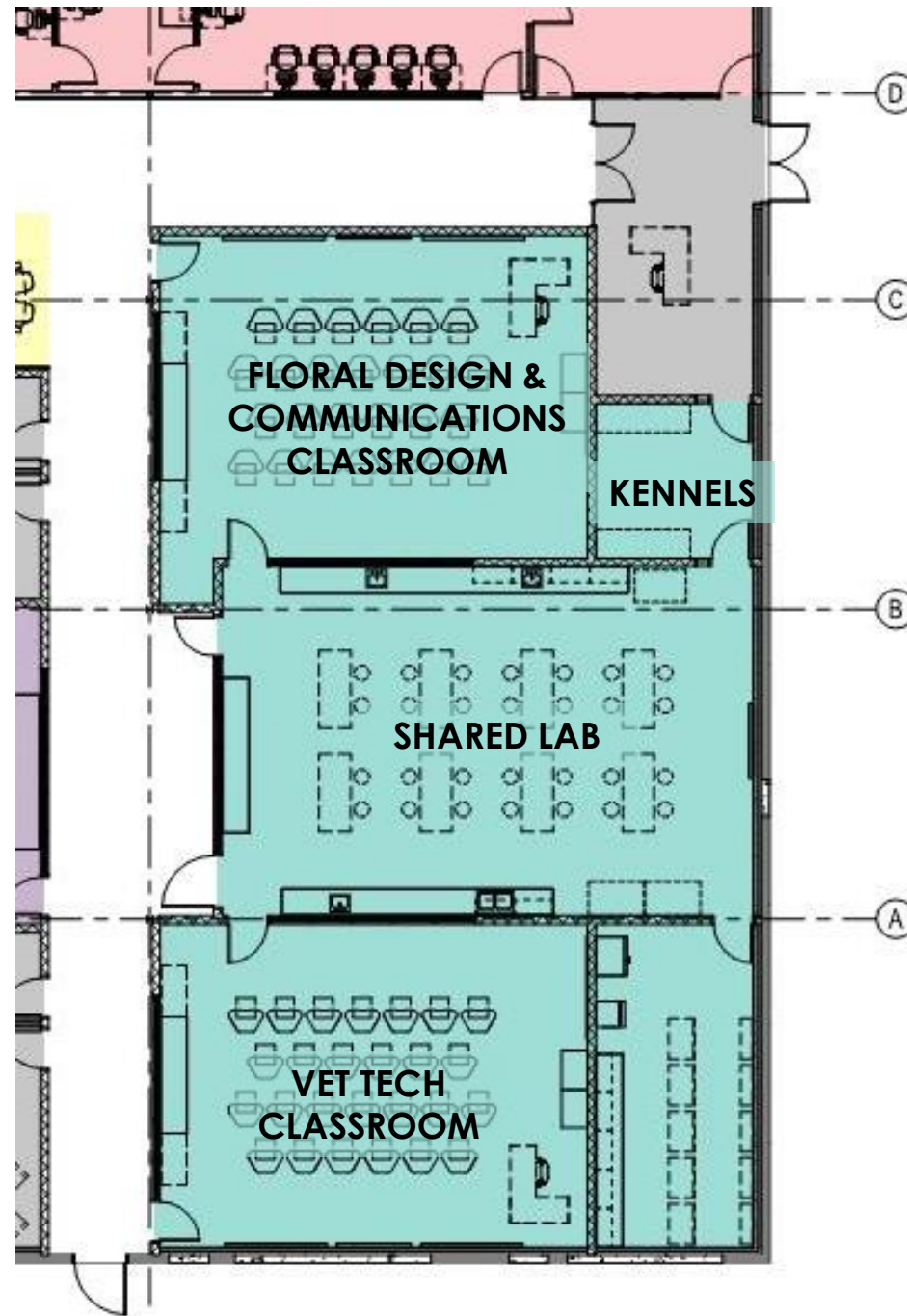
CAREER & TECHNOLOGY CENTER

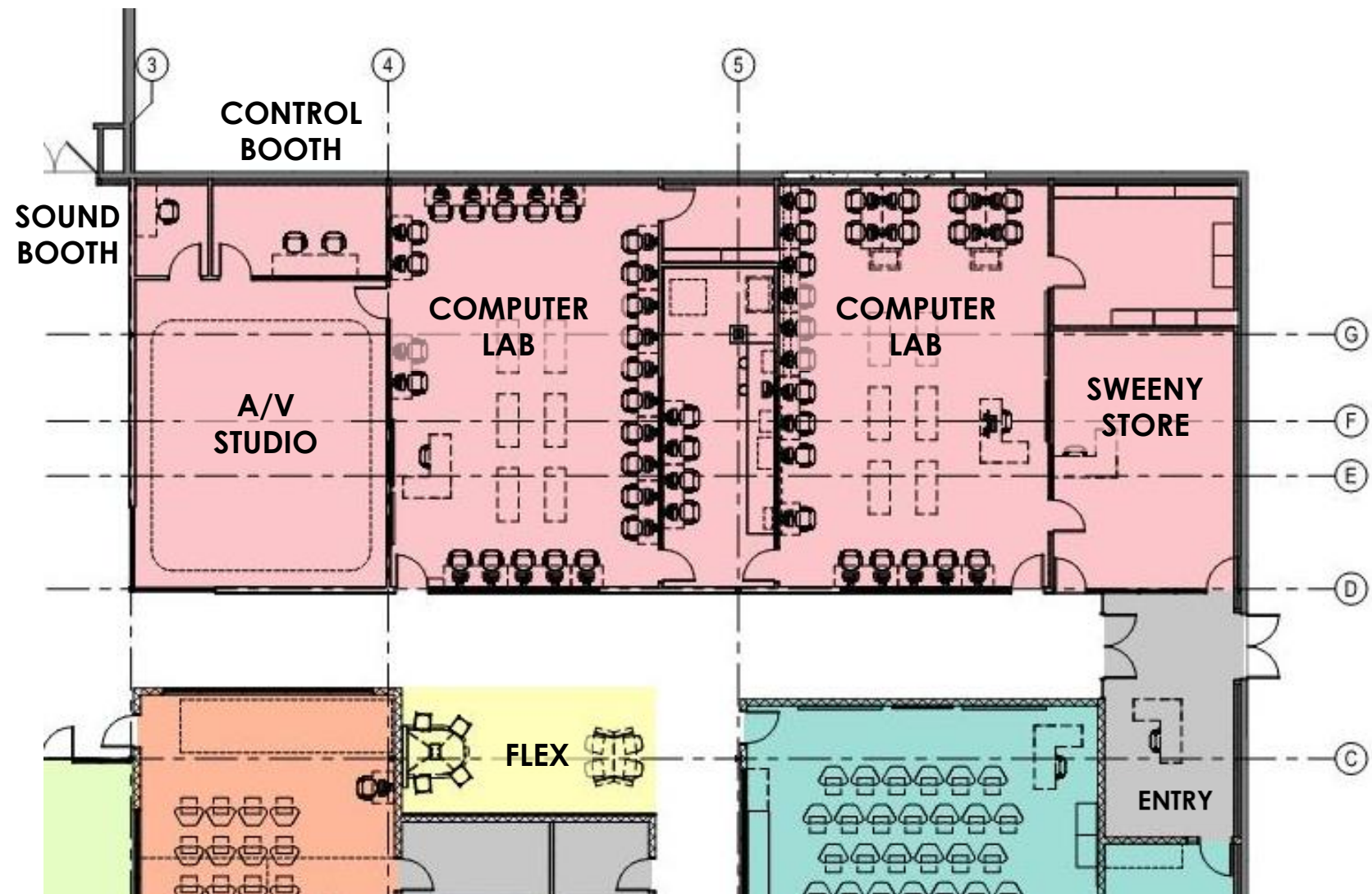


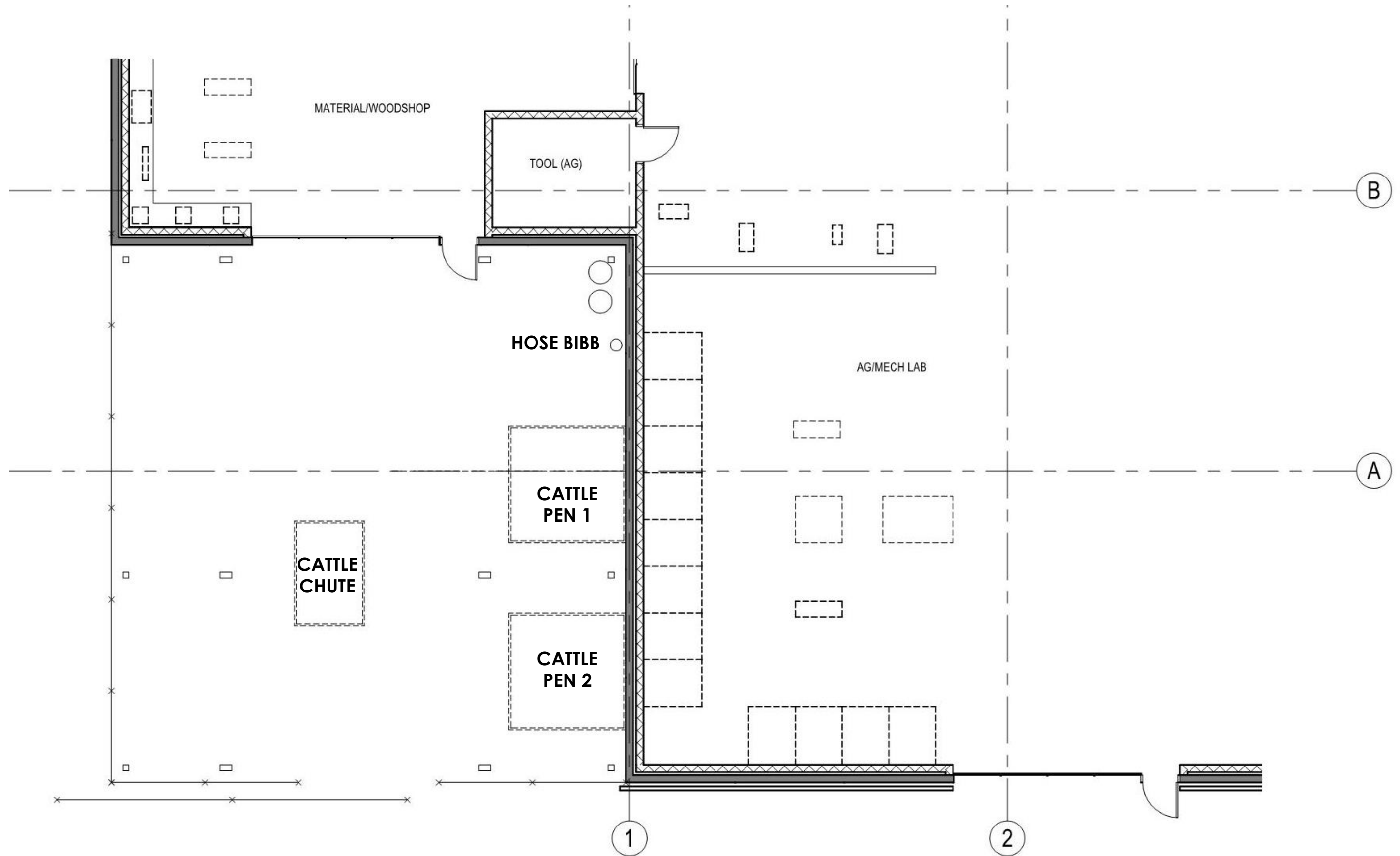


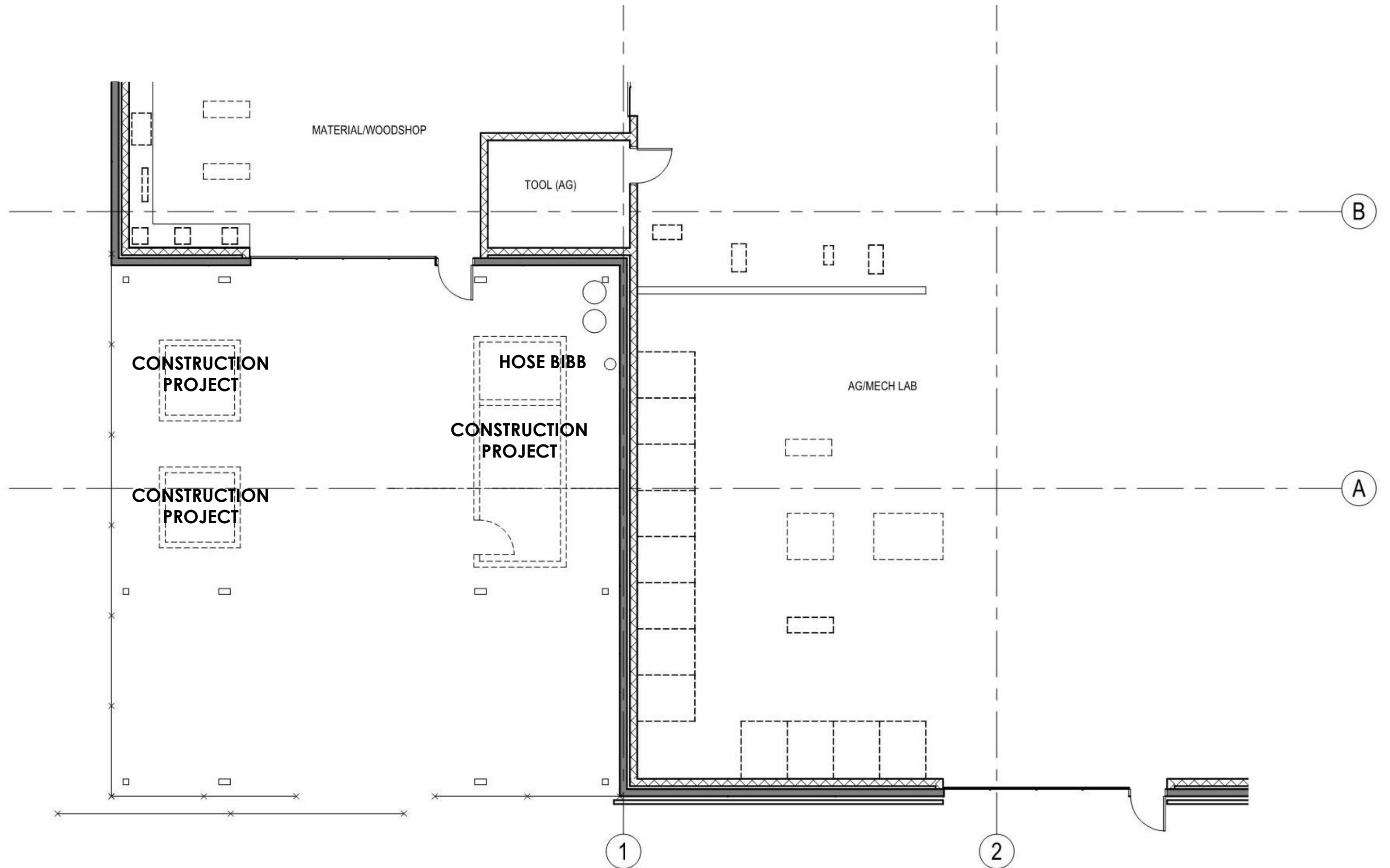


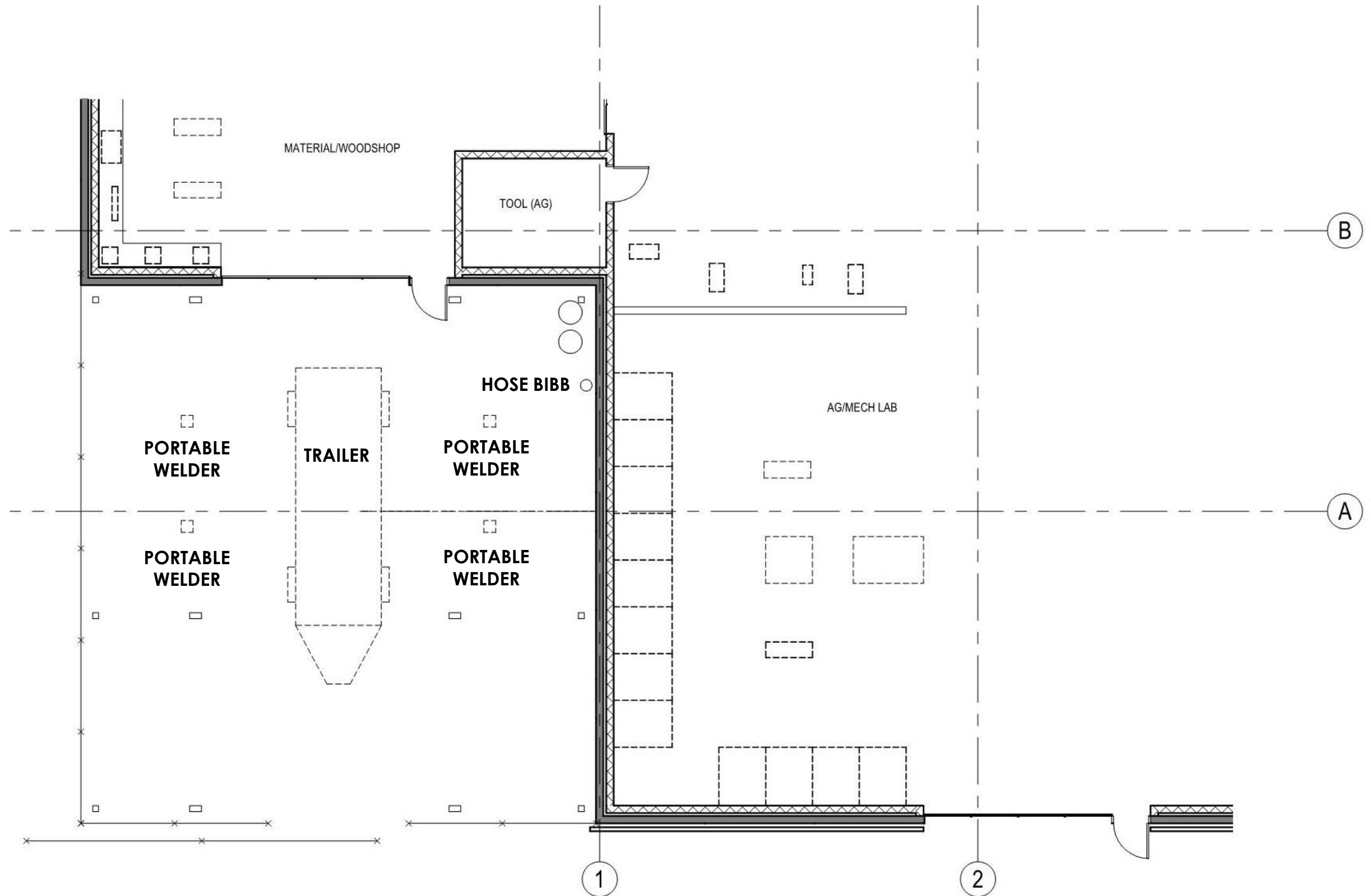














Architectural Views | Existing Elevation



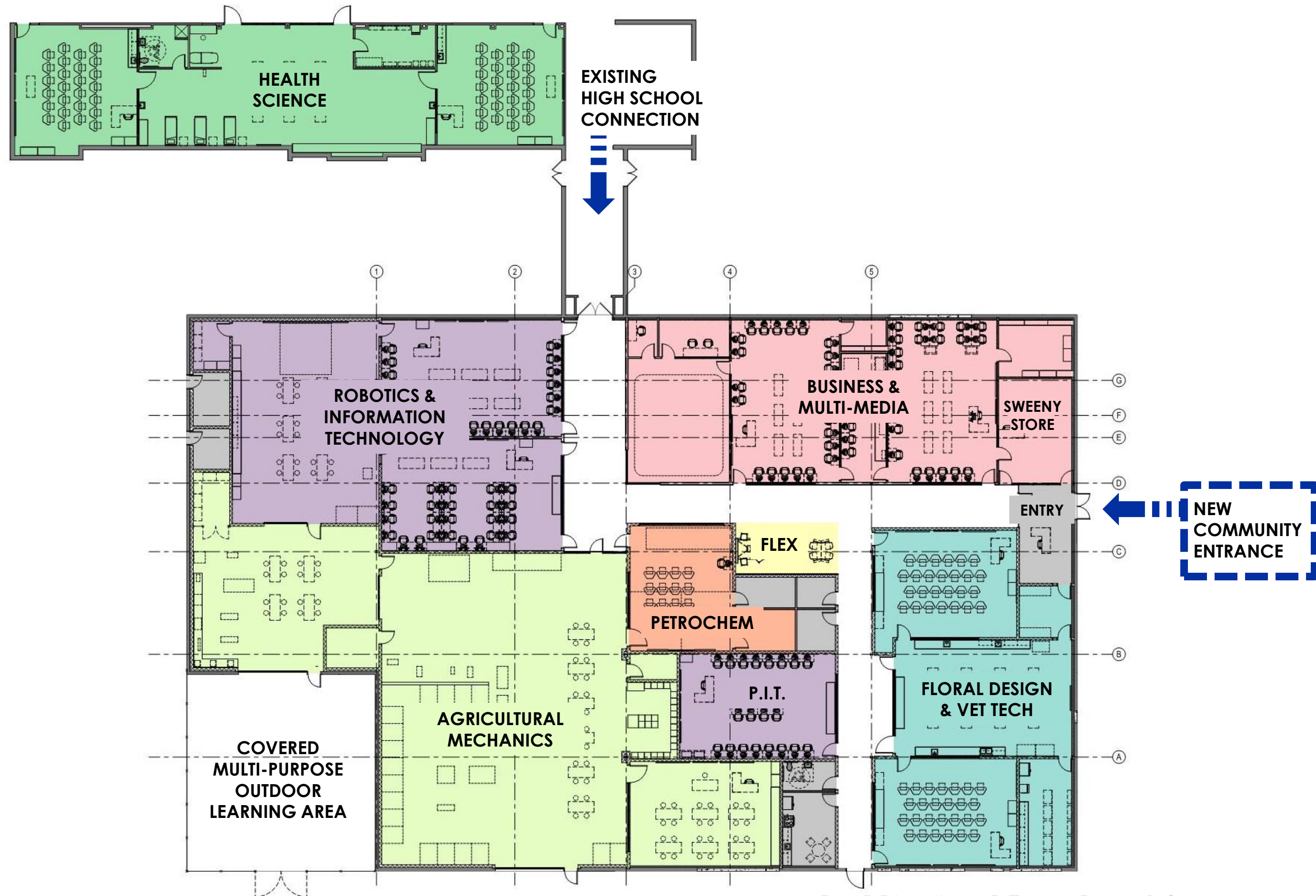
Architectural Views | Exterior Perspective

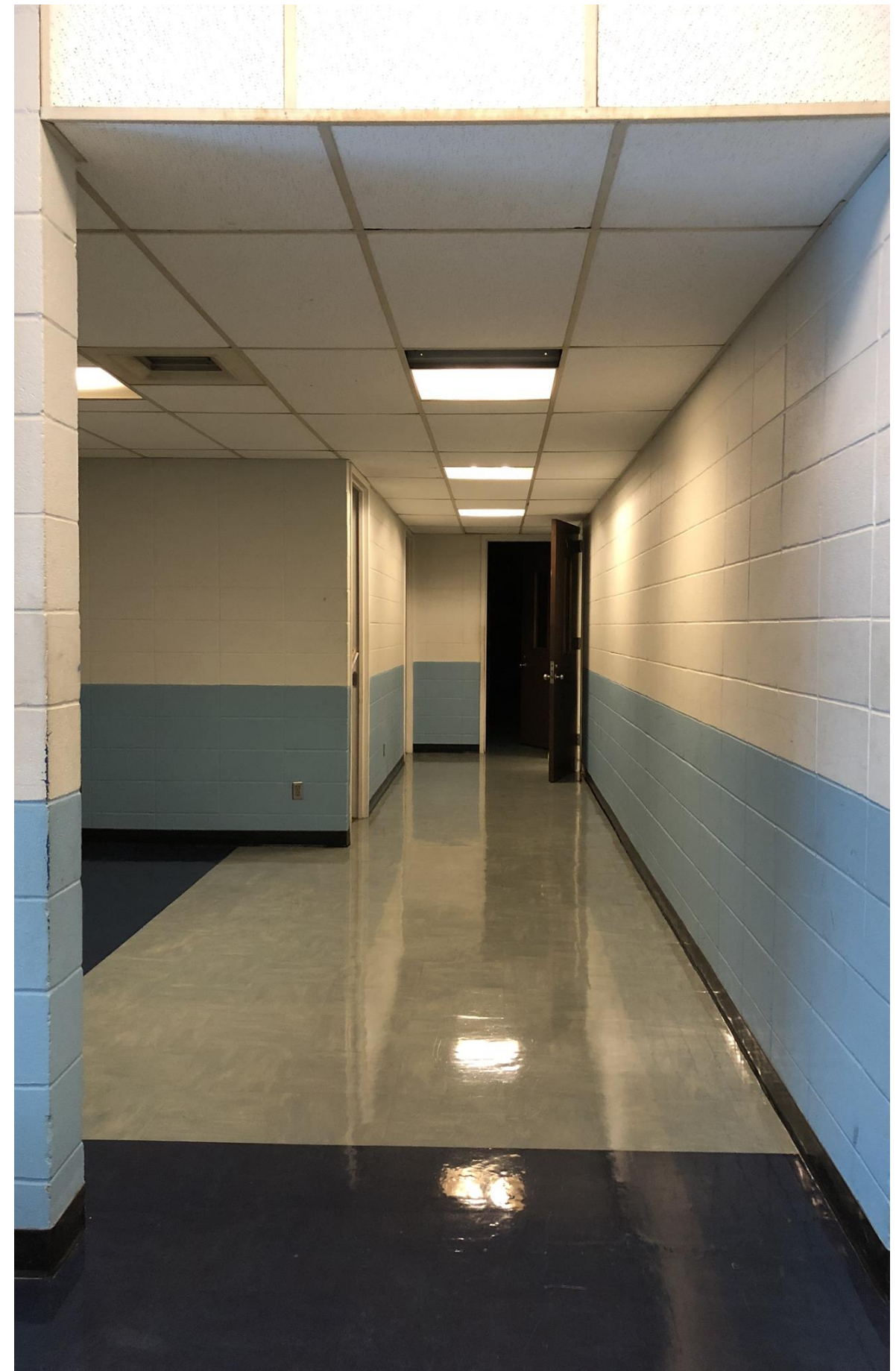


Architectural Views | Exterior Perspective – Community Entry



Architectural Views | Exterior Perspective – Service Yard

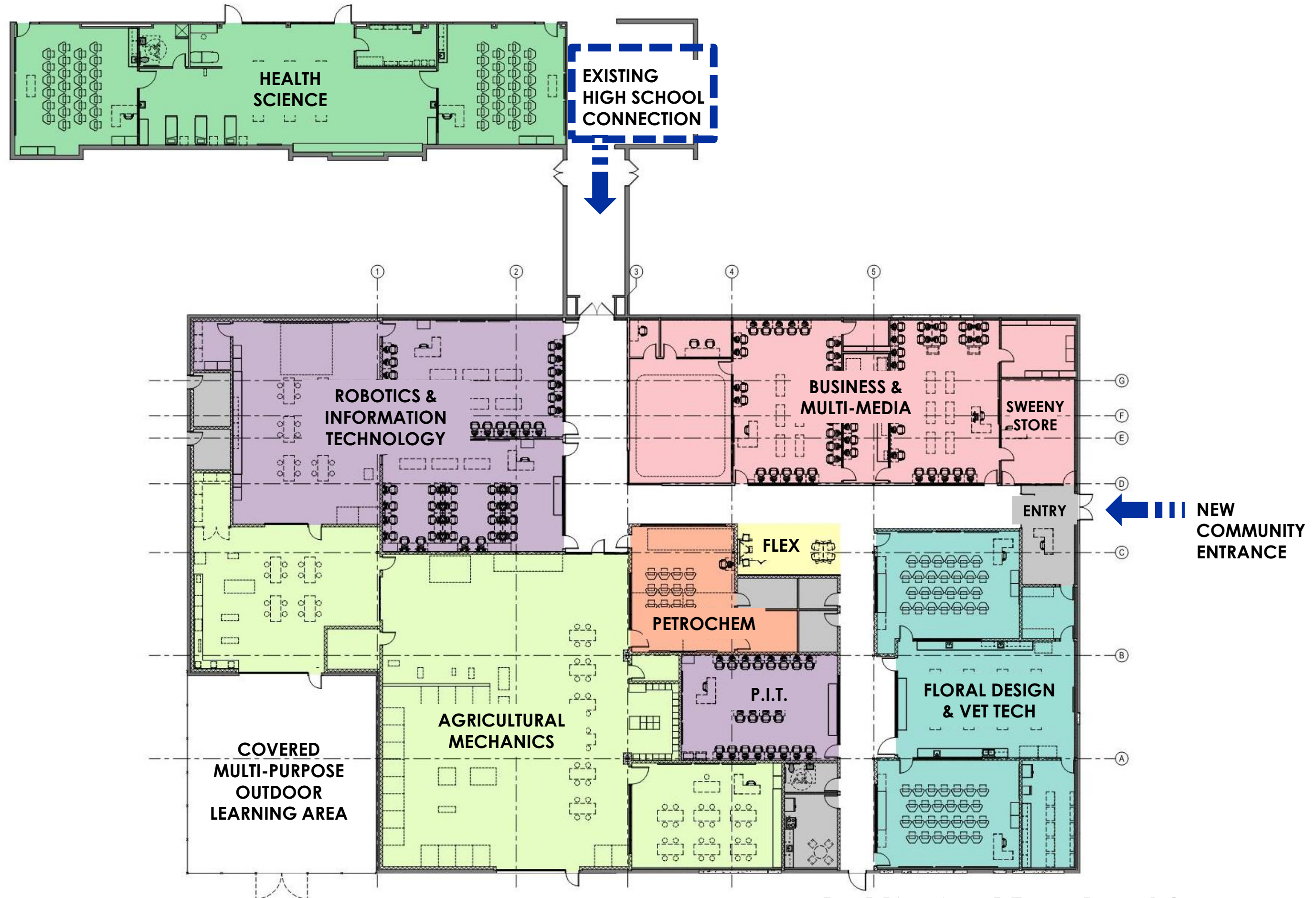




Architectural Views | Interior Existing Conditions



Architectural Views | Interior Flex Zone





Architectural Views | Interior Corridor – Access from Main High School Campus





Thank you!

