

TULSA PUBLIC SCHOOLS

2023-2024 proposed school calendar overview

March 20, 2023



The proposed 23-24 calendar is designed to benefit our Tulsa Public Schools community while advancing the goals set by our Board.

Priorities represented in the proposed 23-24 calendar

1. Increasing instructional days for students
2. Protecting time for educators to collaborate and learn together
3. Deepening our focus and capacity in literacy and the science of reading.

Overview of proposed 23-24 school calendar

School year for students:

Thursday, Aug. 17 - Thursday, May 23

Orientation day for students on
Monday, Aug. 14

Six educator professional development days

- Four of those days are prior to the start of the year

Full-week breaks for Thanksgiving, winter break, spring break

Late start Fridays begin Sept. 1*

174 instructional days & 1,143.67 hours

2023-2024 School Calendar

August 2023							September 2023							October 2023						
Su	M	Tu	W	Th	F	Sa	Su	M	Tu	W	Th	F	Sa	Su	M	Tu	W	Th	F	Sa
		1	2	3	4	5						1	2	1	2	3	4	5	6	7
6	7	8	9	10	11	12	3	4	5	6	7	8	9	8	9	10	11	12	13	14
13	14	15	16	17	18	19	10	11	12	13	14	15	16	15	16	17	18	19	20	21
20	21	22	23	24	25	26	17	18	19	20	21	22	23	22	23	24	25	26	27	28
27	28	29	30	31			24	25	26	27	28	29	30	29	30	31				

November 2023							December 2023							January 2024						
Su	M	Tu	W	Th	F	Sa	Su	M	Tu	W	Th	F	Sa	Su	M	Tu	W	Th	F	Sa
			1	2	3	4						1	2		1	2	3	4	5	6
5	6	7	8	9	10	11	3	4	5	6	7	8	9	7	8	9	10	11	12	13
12	13	14	15	16	17	18	10	11	12	13	14	15	16	14	15	16	17	18	19	20
19	20	21	22	23	24	25	17	18	19	20	21	22	23	21	22	23	24	25	26	27
26	27	28	29	30			24	25	26	27	28	29	30	28	29	30	31			

February 2024							March 2024							April 2024						
Su	M	Tu	W	Th	F	Sa	Su	M	Tu	W	Th	F	Sa	Su	M	Tu	W	Th	F	Sa
				1	2	3						1	2		1	2	3	4	5	6
4	5	6	7	8	9	10	3	4	5	6	7	8	9	7	8	9	10	11	12	13
11	12	13	14	15	16	17	10	11	12	13	14	15	16	14	15	16	17	18	19	20
18	19	20	21	22	23	24	17	18	19	20	21	22	23	21	22	23	24	25	26	27
25	26	27	28	29			24	25	26	27	28	29	30	28	29	30				

May 2024							June 2024						
Su	M	Tu	W	Th	F	Sa	Su	M	Tu	W	Th	F	Sa
			1	2	3	4							1
5	6	7	8	9	10	11	2	3	4	5	6	7	8
12	13	14	15	16	17	18	9	10	11	12	13	14	15
19	20	21	22	23	24	25	16	17	18	19	20	21	22
26	27	28	29	30	31		23	24	25	26	27	28	29

School is not in session on days highlighted in:
Professional Days (6)
Teacher Workdays (2)
Holiday/Break (25)
Parent Conference Day (2)
Late Start (1.5 hr - 30 days)
Orientation

*Transportation would still be provided for eligible students with an adjusted schedule on Fridays

SURVEY ONE: School Calendar Survey

Overview

Administered: September 2022 - January 2023

The school calendar survey is a routine part of our school calendar development process; the survey is administered by the calendar committee made up of staff, parents, teachers, and school leaders.

Recipients: 8,470 randomly selected guardians

Responses: 579

Response rate: 6.8%

Questions included:

- Would you prefer the school year began before or after August 15?
- Would you prefer the school year ended before Memorial Day?
- What day of the week should the first day of school be?
- This year, fall break was one week long. Would you prefer a shorter fall break?
- One a scale of zero (*do not support*) to five (*fully support*), how much would you support a late start of 90 minutes each Friday to allow teachers uninterrupted time for professional development to help improve learning experiences for students?

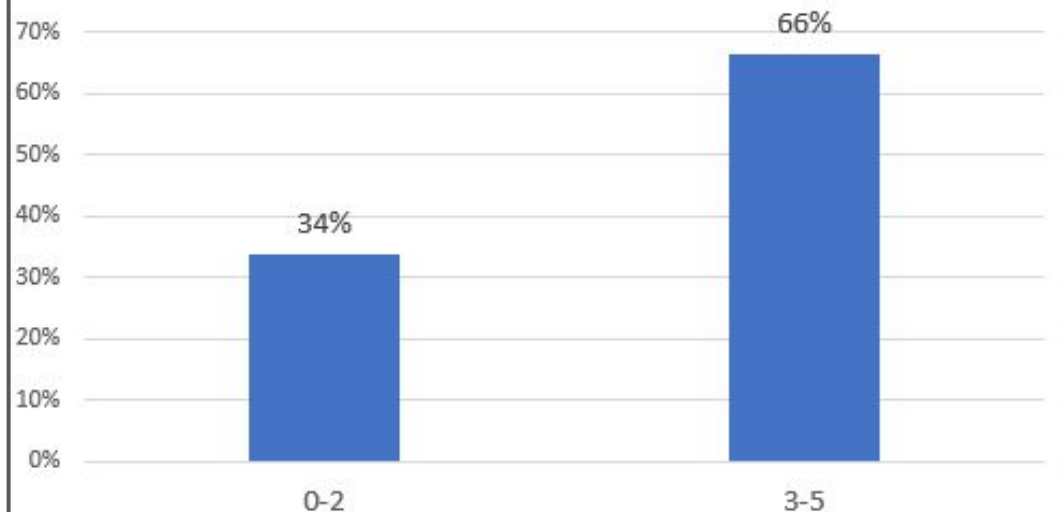
SURVEY ONE: School Calendar Survey

Key Results

On a scale of zero (0) to five (5), how much would you support a late start of ninety (90) minutes each Friday to allow teachers uninterrupted time for professional development to help improve learning experiences for students? Most elementary students would start at 9:00 am; most secondary school students would start at 10:00 am.

0	25%	147
1	3%	17
2	5%	31
3	13%	73
4	6%	32
5	48%	279

On a scale of zero (0) to five (5), how much would you support a late start of ninety (90) minutes each Friday to allow teachers uninterrupted time for professional development to help improve learning experiences for students?



SURVEY TWO: Calendar Proposal Feedback Survey

Overview

Administered: March 1 - March 10

This one-time survey was used to gather feedback to the proposed 2023-2024 school calendar.

Recipients: 30,192 individuals (all staff and all parents)

Responses: 1,308

Response rate: 4%

Questions included:

- If we are able to identify partners to provide Friday morning programming to allow for parents to drop students off at the regular arrival time:
 - What kinds of morning options would be most appealing to your child?
- What is the best way for us to share information about those partner program options?
- Is there anything else you want to share with us?

We analyzed the sentiments of responses based on 822 comments representing 2.7% of total survey recipients.

1. Impact on parents

- a. 226 responses with **negative** sentiments
- b. 20 responses with **positive** sentiments
- c. 17 responses with **mixed** sentiments

2. Working conditions for teachers

- a. 105 responses with **negative** sentiments
- b. 28 responses with **positive** sentiments
- c. 5 responses with **mixed** sentiments

3. Impact on learning

- a. 93 responses with **negative** sentiments
- b. 23 responses with **positive** sentiments
- c. 8 responses with **mixed** sentiments

4. Calendar

- a. 9 responses with **negative** sentiments

Given the challenge of quantifying the comments, we looked at the overall themes of the comments.

Impact on parents

- Concerns about the needs of working parents
- Misunderstandings about student transportation*
- Appreciation for delayed start rather than full-days off for professional development

Working conditions for teachers

- Excitement that the teacher collaboration time will improve student outcomes and teacher retention
- Preference that teacher collaboration time happen after school or during plan time

Impact on student learning

- Extra sleep will help students be better focused and improve mental health
- Concerns that late start will negatively affect student attendance on Fridays

Calendar

- Concerns about extending the school year**

**Respondents assumed that students would not have bus transportation on Fridays*

***Respondents did not want the school year extended into June.*

Improving student outcomes means investing in our educators by giving them the time they need to effectively collaborate and plan to meet each student's unique needs.

During late-start Fridays, teachers would collaborate together with their colleagues to:

- understand individual student needs
- match students to learning supports
- learn from best practices across our schools

Parents and families would experience the results of this collaborative time as:

- Strengthened relationship- and routine-building at the start of the school year
- Students learning to read get more specialized supports based on individualized needs
- Teachers more quickly identifying students who are struggling (academically or personally) and connecting them with appropriate supports.





THANK YOU

