



**LEBANON COMMUNITY SCHOOL DISTRICT
SCHOOL BOARD MEETING
JANUARY 12, 2023, 6:00 PM**

Santiam Travel Station

750 S. Third Street, Lebanon, OR 97355

MEETING MINUTES

<u>BOARD MEMBERS PRESENT:</u> Tom Oliver, Chair Richard Borden, Vice Chair Mike Martin, Member Nichole Piland, Member Tammy Schilling, Member	<u>EXECUTIVE STAFF PRESENT:</u> Jennifer Meckley, Assistant Superintendent William Lewis, Business Director
---	--

The meeting minutes were recorded by Executive Secretary Jessica Woody.

1. WELCOME AND CALL TO ORDER

Board Chair Tom Oliver called the meeting to order at 6:08 PM and led the flag salute.

2. PUBLIC COMMENTS

LBL ESD Assistant Superintendent, Jason Hay, spoke to the school board, on behalf of the LBL ESD Superintendent and Board. He thanked the board for supporting the work that they do and allowing them to support the staff and students.

He provided and referenced a handout which explained the services that the LBL ESD provides. He explains that not many people know that their primary funding source is not the general fund, like typical to a school district, it is state funded and largely funded by grants.

He also explains that tier 1 services are provided to every component district, and there are many other services that districts can purchase as well.

He lastly thanks the school board for their service to the kids and being a good partner with them, and announces that their sub group passed the local service plan and the LBL ESD board is approving it next week. It will then be brought to the Lebanon School Board at the February meeting.

Community member, Lindsay Pehrson, then spoke to the board addressing school dress code.

She explains that she attended a school board meeting for Sand Ridge, and that their dress code has higher standards than Lebanon's. She gives an example of student's wearing collars, chains, and spikes to school which would be suggestive to violence and seems to be inappropriate attire. She feels that many others have come to her and agree with the concerns.

She states that at Sand Ridge school, if a student is not following dress code that the parent must come and pick them up. She requests that Lebanon follow something similar.

She feels concerned with the clothing that students are wearing, especially the female students and she believes that it could make staff uncomfortable. She would like to hold our children to a higher standard and states that there is not a lot of information in what would be recommended from the district.

3. ACCEPTANCE OF SUPERINTENDENT RESIGNATION

Tom Oliver states that Superintendent Yates has submitted his resignation and the board needs to take action to accept the resignation.

Mike Martin motions to approve, and Richard Borden seconds the motion. All in favor it is a unanimous vote to approve the acceptance of the superintendent resignation.

4. APPOINTMENT OF INTERIM SUPERINTENDENT

Tom Oliver states that Assistant Superintendent, Jennifer Meckley, has been covering the duties in interim.

Mike Martin motions to approve and Nichole Piland seconds the motion. All in favor it is a unanimous vote to appoint Jennifer Meckley as the interim superintendent.

5. RESTATEMENT OF RESOLUTION 2223-1

Mike Martin motions to approve and Nichole Piland seconds the motion. All in favor it is a unanimous vote to approve the changes/updates to Resolution 2223-1, removing Bo Yates and adding Jennifer Meckley in all spaces were Bo Yates was written.

6. APPROVAL OF CONSULTING CONTRACT

Tom Oliver states that Bo Yates has agreed to provide assistance as needed throughout the rest of the school year in order to provide a seamless transition. This will mean that the school district will retain Bo and he will work remotely under the same terms as his contract, which would end 6/30/23. Nichole motions to approve and Richard seconds the motion. All in favor it is a unanimous vote to approve Bo's consulting contract.

7. ODE INTEGRATED GUIDANCE UPDATE

Jennifer Meckley explains to the board a quick overview of what is to come in the next month relating to Integrated Guidance.

She explains how ODE has streamlined multiple grants and programs that the district participates in, referring to the Integrated Guidance reference page in the board packet. The state combined the 6 programs together into this new process, in hopes to engage community needs and assessment.

She notes that there has been a team in the district that has been working on this since last spring, and that the district will bring an application for the board to approve in March.

8. SEVEN OAK UPDATE

William Lewis discusses with the board, the recommendations for contractors and the district process that was completed. Per state law the district participated in a CMGC RFP process. HMK company, the district construction manager, and the architects were both a part of the process as well but were not voting members. He explains that two contractors responded to the RFP and the district thoroughly vetted both contractors by reviewing site and assessment planning, design process, value of contract, cost estimating, and all other pre-construction services and service fees.

William states that after scoring their RFP, the district team unanimously approved GBC construction, and is now asking the board of directors' approval for GBC construction for the CMG contractor for the Seven Oak Project.

Mike Martin motions to approve and Richard Borden seconds the motion. All in favor, it is a unanimous vote to approve GBC construction for the CMG contractor for the Seven Oak Project.

9. CONSENT AGENDA

Nichole Piland motions to approve and Tammy Schilling seconds the motion. All in favor with a unanimous vote, the consent agenda made up of the December 8, 2022 Board Meeting Minutes, second reading policy update IGAC, GDA, GCQB, and BBBA and temporary new hire Daniel Huynh is approved in its entirety.

10. DEPARTMENT REPORTS

A. Operations

Nothing to report.

B. Human Resources

Nothing to report.

C. Finance

William Lewis speaks to the board about the current state of the budget and how revenue generation will be critical moving forward, and in our current state the ways the district would do so is through property taxes and enrollment. He states that we are about 175 students down based on pre-COVID times.

He also explains that the general fund is up in revenue about 18 thousand dollars over last year, which due to overheard in our current contract, that amount does not pay for a lot. William explains that the district will be spending the ending fund balance down and would like to make that known. He also notes that local tax receipts are also expected to go up as well.

It is agreed between the district and board chair that there will be much more to discuss once the legislature goes through their processes and decides the state school fund.

The board members and William discuss Oregon Paid Leave tax and what it will entail for the district and employees. William explains that the district has hired a private vendor, The Standard, that will collect the tax associated with the paid leave program, and that the development of the communication plan to employees is being put together at this time. He also notes that the district will pay 40% of the 1 percent, and employees will pay 60%, and that by hiring a private vendor, it has saved several thousand dollars and will create a 9-month window of time before the tax will start coming out of payroll. He explains that the tax will begin to come out and the leave time will become available all in September.

11. COMMUNICATION

A. Board

Tom Oliver notes that next month the board will approve a contract for interim superintendent Meckley and the board will need to have a conversation about the process on permanent replacement. Tom also thanks Jennifer for being willing to step into that role. He also states his appreciation of Bo, and a thanks to a great team that was built by great leadership.

Mike Martin addresses the house bill 4114, which requires members of district school boards to file a verified statement of economic interest with the ethics commission. Executive secretary Jessica Woody notes that she will be setting up those requirements for each member to complete in the system.

Mike also addresses the house bill 4029 which requires a governing body of public education provider to conduct a self-assessment every two years, used to develop and refine professional learning plans. Tom anticipates that there will be some direction coming from OSBA on how they would like to see the districts move forward with this.

Tammy Schilling comes back to the public comments that were made at the start of the meeting, and states her agreement with the dress code concerns. She states that she would like to figure out how to put this topic on the agenda in the future and how to enforce this, she feels that it comes back to day to day comfortability with students who are going to school to learn. She is curious if the policy needs to be updated in regards to this.

Mike adds that he feels as a board they may need to work towards setting some priorities and maybe dress code should be one of them along with early childhood education. He also adds that high school graduation should be reviewed as well, he is not satisfied with 80%.

Jennifer Meckley notes that the district does not currently have a policy in place for dress code, it has been managed through parent/student handbooks, though none the less Jennifer does agree that the issue will need to be addressed. She notes that we need to look at how we can do better. The board would like to see the principal of the middle and high school present at a future board meeting to discuss this further.

B. Superintendent

Jennifer thanks the board members, as it is board appreciation month. She explains that the high school leadership class has created a sign for the board members, and the district has provided some thank you gifts, and Jennifer thoroughly thanked the board members for all of their time and support to the district.

She also explains how the district and the Gillott Home Team, along with a few community members have come together to create the educator apple awards, which can be for any educator classified and certified. She shares that the first few winners were awarded and presented to Tammy Brown at Green Acres, David Meek at Seven Oak, and Aaron Smith at Lebanon High. She talks about the great experience it has been to recognize the districts' educators in such a way.

12. AUDIENCE COMMENTS

No audience comments were made.

13. ADJOURNMENT

There being no further business before the Board, the meeting was adjourned at 6:49 PM.



Tom Oliver, Board Chair



Jennifer Meckley, Interim Superintendent

LEBANON COMMUNITY SCHOOL DISTRICT

Board Meeting
January 12, 2023
6:00 PM

ATTENDEE SIGN-IN

(This sheet will become part of public record)

NAME	CONTACT INFORMATION (Phone and/or Email)
Jason Hay	LBL ESD
Lindsay Peterson	541570 2790 lindsay71589@gmail

LEBANON COMMUNITY SCHOOL DISTRICT

Board Meeting
January 12, 2023
6:00 PM

SPEAKER SIGN-IN

(This sheet will become part of public record)

NAME	CONTACT INFORMATION (Telephone and/or Email)
Jason Ham	LBL ESD 541-812-2601
Lindsay Peterson	541 570 2790

INTENT TO SPEAK

The Board welcomes input. To provide in-person public comment please submit this completed card to the Board secretary prior the start of the meeting.

If attending virtually, the following will apply

1. You will need to complete the digital Intent to Speak form, on the School Board Minutes and Agendas page.
2. Name of the participant for Zoom meeting must match the information below.
3. You will be assigned a speaking order, which you will receive with your Zoom link for the meeting.
4. You must have your camera on when speaking.
5. You must follow the meeting participation expectations provided by the Board Chair or you will be removed from the meeting.

Name: Lindsay Robinson Phone: 541570 2790
Name of organization (if applicable): _____
Address: 40 Hiatt St Lebanon OR
Email (optional): lindsay71589@gmail.com
Topic or comment to be presented (brief description): School dress code

A complaint brought before the Board shall be referred to the proper school authorities. A complaint shall be processed in accordance with Board policy KL - Public Complaints and KL-AR - Public Complaints Procedure. A hearing conducted by the Board regarding personnel may take place in an executive session.

The Board requests that a topic or comment is limited to three minutes or less.



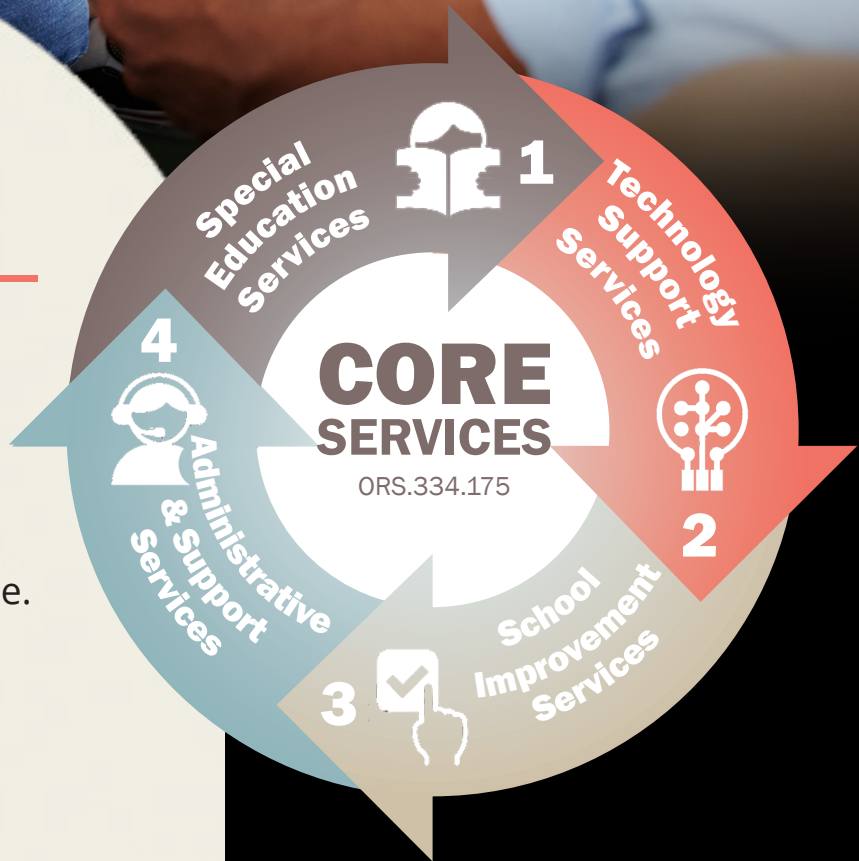
Linn Benton Lincoln
Education Service District

2022-2023 Overview



LBL ESD MISSION

LBL ESD serves districts, schools and students by providing equitable, flexible and effective educational services through economy of scale.

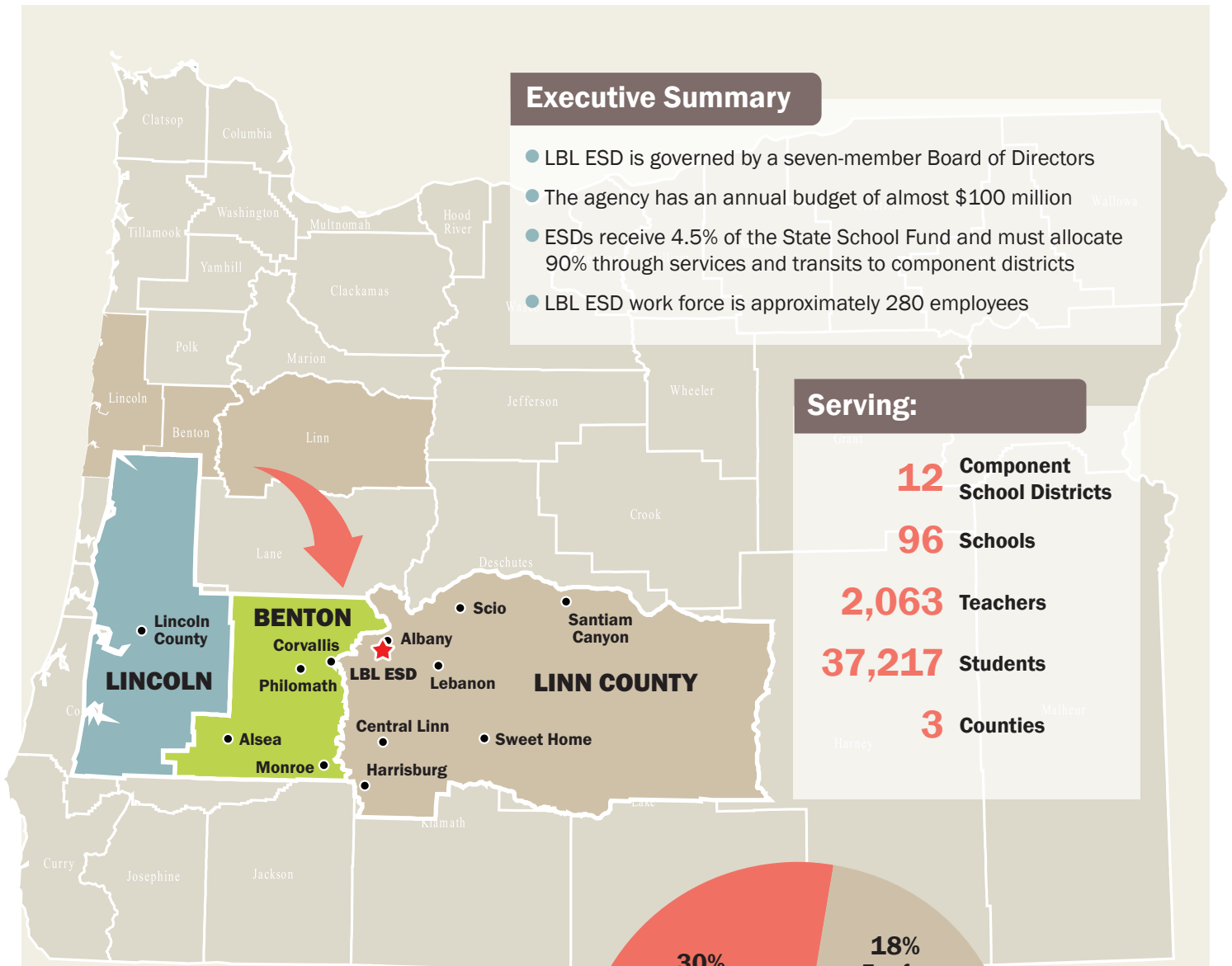


Executive Summary

- LBL ESD is governed by a seven-member Board of Directors
- The agency has an annual budget of almost \$100 million
- ESDs receive 4.5% of the State School Fund and must allocate 90% through services and transits to component districts
- LBL ESD work force is approximately 280 employees

Serving:

12 Component School Districts
96 Schools
2,063 Teachers
37,217 Students
3 Counties



Agency Funding Sources

State Funding:

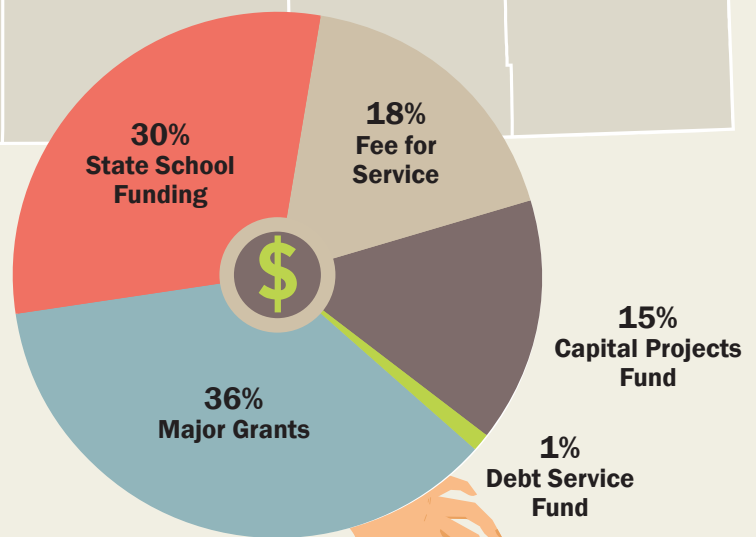
Composed of property taxes and state school funds. Provides resolution services to component districts through the Local Service Plan.

Major Grants:

Composed of state and federal grants and contracts that provide targeted services to Linn, Benton, and Lincoln Counties and South Coast ESD.

Fee-For-Service:

Composed of revenue from services purchased by component and non-component districts in the areas of business, data, technology, special education and student and family services.



VISION

To be a responsive and transparent organization that supports districts by embracing continuous improvement in helping every child succeed.

Tier 1 Services Provided to Districts by LBL ESD



Special Education Services:

- Education Evaluation Center, K-12
- Education Evaluation, Birth to 5
- Education Evaluation, Audiology
- Augmentative Communication
- Occupational Therapists (OT)
- Physical Therapists (PT)
- Severe Disability Services
- Severe Disability Transits
- Spanish Interpreter/Translator



Technology Support Services:

Network

- Network Services (WAN)
- Technology Replacement

Information Systems

- Systems Analysts
- Data Warehouse Services (Argos)
- Customer Support and Help Desk
- Power School Special Education
- Student Information Systems
- Registrar
- Wazzle Gradebook

Financial Systems

- Infinite Visions
- InTouch
- Forecast 5
- Customer Support & Help Desk



School Improvement Services:

Strategic Partnerships for Student Success

- SIA/Integration Liaison and Coaching
- Mentor Teacher Coaching
- New Teacher Mentoring
- Social, Emotional, & Behavioral Learning Coaching
- Communities of Practice
- High School Success Support
- Engagement & Attendance Coaching
- School Prevention & Safety Services Administrator
- Home School Registration



Administrative & Support Services:

Business Services

- Courier

New Services for Districts

Behavioral Safety Framework:

Our framework addresses services and support for safety assessment processes (STAT/SIRC); suicide prevention, intervention, postvention plans (Adi's Act); and crisis response protocols. The framework includes training, technical assistance and coaching. Contact: Nancy Griffith

Cyber Safety Service:

Our Cyber Safety menu provides annual insurance compliance reviews, vulnerability testing, and a comprehensive information security assessment tailored for K-12 schools. Contact: Tim Jones

New Teacher Mentor Program:

Strategic Partnerships for Student Success provides a New Teacher Mentor Program. Our staff works with districts to assess their needs for mentorship and builds a system to support the capacity of mentor teachers within districts. Contact: Nancy Griffith

Grants, Contracts & Partnerships

Early Learning:

- Early Childhood Special Education
- Early Intervention
- Early Learning HUB of Linn, Benton and Lincoln Counties

K-12:

- Cascade Regional Inclusive Block Grant Services to Students with Low Incidence Disabilities
- Juvenile Crime Prevention
- Long Term Care and Treatment
- Medicaid Administrative Claiming
- Statewide Education Initiatives Account
- Transition Network Facilitator
- Youth Transition Program

Community Partners:

- Department of Human Services
- InterCommunity Health Network CCO
- Mid-Valley STEM-CTE HUB
- Linn-Benton Community College
- Oregon Coast Community College
- Oregon State University
- Other Non-Profit Partners
- Western Regional Educator Network



VALUES

Success for all students and their districts ● Relationships built on trust, responsiveness and honesty
● Accountability and the four "E"s: Excellence, Equity, Efficiency and Effectiveness

LBL ESD Contact Information



Superintendent

Tonja Everest ☎ 541.812.2601 ✉ tonja.everest@lblesd.k12.or.us

Assistant Superintendent

Jason Hay ☎ 541.812.2601 ✉ jason.hay@lblesd.k12.or.us

Executive Financial Officer

Rocco Luiere ☎ 541.812.2762 ✉ rocco.luiere@lblesd.k12.or.us

Executive Human Resource Officer

Kate Marrone ☎ 541.812.2628 ✉ kate.marrone@lblesd.k12.or.us

Executive Information & Technology Officer

Tim Jones ☎ 541.812.2805 ✉ tim.jones@lblesd.k12.or.us

Programs

Business Services

Rocco Luiere ☎ 541.812.2762 ✉ rocco.luiere@lblesd.k12.or.us

Cascade Regional Inclusive Services

Angie Greenwood ☎ 541.812.2771 ✉ angie.greenwood@lblesd.k12.or.us

Kristy Stringham ☎ 541.812.2721 ✉ kristy.stringham@lblesd.k12.or.us

Early Intervention/Early Childhood Special Education

Autumn Belloni ☎ 541.574.2240 ✉ autumn.belloni@lblesd.k12.or.us

Debbie McPheeters ☎ 541.753.1202 ✉ debbie.mcpheeters@lblesd.k12.or.us

Kimberly McCutcheon-Gross ☎ 541.753.1202 ✉ kimberly.gross@lblesd.k12.or.us

Long Term Care & Treatment Education

Cathy Wright ☎ 541.757.5965 ✉ cathy.wright@lblesd.k12.or.us

Special Education & Evaluation Systems

Laura Petschauer ☎ 541.812.2721 ✉ laura.petschauer@lblesd.k12.or.us

Kristy Stringham ☎ 541.812.2721 ✉ kristy.stringham@lblesd.k12.or.us

Strategic Partnerships for Student Success

Nancy Griffith ☎ 541.812.2620 ✉ nancy.griffith@lblesd.k12.or.us

Kristina Wonderly ☎ 541.812.2625 ✉ kristina.wonderly@lblesd.k12.or.us

Technology and Information Services

Tim Jones ☎ 541.812.2805 ✉ tim.jones@lblesd.k12.or.us



Help Desk Support

BIS Suite: 541.812.2700

SIS Suite: 541.812.2800

PS Special Programs: 877.967.7733



Linn Benton Lincoln Education Service District

905 4th Avenue SE, Albany, OR 97321 ~ 541.812.2600 ~ www.lblesd.k12.or.us

2022-2023



Alsea School District Services provided through LBL ESD

District Executive Summary

- Roger Irvin, LBL ESD Board Director, ASD Region
- Sarah Fay, LBL ESD Budget Committee, ASD Region
- ASD receives 1.4% of Local Service Plan funding and is the 11th largest in student enrollment out of the 12 component districts
- Districts are able to transit up to 50% of their available Tier 2 resources. At this time, ASD is transiting \$0 which represents 0%

ADMw Over the Years

	ESD	ASD
FY 2015/16	45,241.2	301.3
FY 2016/17	45,019.9	287.7
FY 2017/18	44,872.8	335.3
FY 2018/19	45,092.2	465.9
FY 2019/20	44,912.5	465.9
FY 2020/21	47,337.1	930.8
FY 2021/22	43,864	1,149

2021-22 Quick Stats

32

Number of
BIS Tickets

11

Number of
Network Tickets

195

Number of
SIS Tickets

500
mbps

Total ISP Purchased

LBL ESD serves districts, schools and students by providing equitable, flexible and effective educational services through economy of scale. Our vision is to be a responsive and transparent organization that supports districts by embracing continuous improvement in helping every child succeed.

Services Data

Note: This data is based on fiscal year 2021-2022

ESD Staff Serving District

Tier 1

Special Education — Tier 1 Services by Student	ESD	ASD
Audiology Hearing Screenings	4324	16
Audiology Evaluations	23	0
Mild/Moderate Special Ed Supports K-12 (PT)	104	0
Mild/Moderate Special Ed Supports K-12 (OT)	602	15
Mild/Moderate Special Ed Supports K-12 (Aug Comm)	212	0
In-Center Special Education Evaluations	159	0
In-District and Assigned Special Education Evaluations	427	14
Severe Disability Supports	160	1
Early Intervention Evaluations	354	1
Early Childhood Special Education Evaluations	402	4

Special Education — Tier 1 Services by Hours

Interpreter, District Requests	72.32	0
Interpreter, In-Center Evaluations	276.3	0
Translation, District Requests	354.5	0
Translation, In-Center Evaluations	136.47	0

Grants

EI/ECSE	ESD	ASD
Early Intervention Services	150	1
Early Childhood Special Education Services	749	2
Students Transitioned to Kindergarten	226	0

Cascade Regional — Low Incidence, High Needs

Vision	46	0
Hearing	61	1
Physical Therapy	45	0
Occupational Therapy	42	0
Autism Spectrum Disorder	617	16
Traumatic Brain Injury	14	0
Total # of K-12 Regional Low Incidence Disabilities	827	17

Other Services

Attendance	1065	0
Behavior Specialist	112	7
Family Support Liaison	130	0
Youth Transition Services	0	0

School Psychologist

Eric Hafner

Learning Consultant

Kelley Guilliot

Speech Language Pathologist

N/A

Autism

Ryan Stanley, Scott Bradley (Online)

Deaf/Hard Hearing

Philip Mills

Occupational Therapist

Pamela Schindler

Physical Therapist

Jessy Schley

Vision

TBD

Augmentative Communication

Sarah Follett

Traumatic Brain Injury

Brandi Lancaster

Audiology

Jeff Cox

Attendance Advisor

N/A

Family Support Liaison

N/A

Behavior Consultant

Mark Summers

Home School

Michael Neilson

Transition Network Facilitator

Sherri Townsend, Joshua Barbour

Severe Disabilities Consultant

Jennifer Barabe-Snyder



Linn Benton Lincoln Education Service District

905 4th Avenue SE, Albany, OR 97321 ~ 541.812.2600 ~ www.lblesd.k12.or.us



2022-2023



Central Linn School District

Services provided through LBL ESD

District Executive Summary

- Roger Irvin, LBL ESD Board Director, CLSD Region
- Sarah Fay, LBL ESD Budget Committee, CLSD Region
- CLSD receives 1.8% of Local Service Plan funding and is the 10th largest in student enrollment out of the 12 component districts
- Districts are able to transit up to 50% of their available Tier 2 resources. At this time, CLSD is transiting \$71 which represents 0.01%

ADMw Over the Years

	ESD	CLSD
FY 2015/16	45,241.2	851.1
FY 2016/17	45,019.9	851.1
FY 2017/18	44,872.8	826.9
FY 2018/19	45,092.2	844.4
FY 2019/20	44,912.5	844.4
FY 2020/21	47,337.1	813.8
FY 2021/22	43,864	761

2021-22 Quick Stats

37

Number of
BIS Tickets

21

Number of
Network Tickets

123

Number of
SIS Tickets

400
mbps

Total ISP Purchased

LBL ESD serves districts, schools and students by providing equitable, flexible and effective educational services through economy of scale. Our vision is to be a responsive and transparent organization that supports districts by embracing continuous improvement in helping every child succeed.

Services Data

Note: This data is based on fiscal year 2021-2022

ESD Staff Serving District

Tier 1

Special Education — Tier 1 Services by Student	ESD	CLSD
Audiology Hearing Screenings	4324	59
Audiology Evaluations	23	0
Mild/Moderate Special Ed Supports K-12 (PT)	104	4
Mild/Moderate Special Ed Supports K-12 (OT)	602	10
Mild/Moderate Special Ed Supports K-12 (Aug Comm)	212	2
In-Center Special Education Evaluations	159	1
In-District and Assigned Special Education Evaluations	427	28
Severe Disability Supports	160	2
Early Intervention Evaluations	354	4
Early Childhood Special Education Evaluations	402	7

Special Education — Tier 1 Services by Hours

Interpreter, District Requests	72.32	11.7
Interpreter, In-Center Evaluations	276.3	0
Translation, District Requests	354.5	69.43
Translation, In-Center Evaluations	136.47	0

Grants

EI/ECSE	ESD	CLSD
Early Intervention Services	150	2
Early Childhood Special Education Services	749	7
Students Transitioned to Kindergarten	226	5

Cascade Regional — Low Incidence, High Needs

Vision	46	2
Hearing	61	0
Physical Therapy	45	3
Occupational Therapy	42	3
Autism Spectrum Disorder	617	8
Traumatic Brain Injury	14	0
Total # of K-12 Regional Low Incidence Disabilities	827	16

Other Services

Attendance	1065	21
Behavior Specialist	112	0
Family Support Liaison	130	3
Youth Transition Services	0	0

School Psychologist

Jenelle Stone

Learning Consultant

N/A

Speech Language Pathologist

Joe Lake

Autism

Michelle Neilson

Deaf/Hard Hearing

Don Dorman

Occupational Therapist

Calista Huffman

Physical Therapist

Gail Baggett, Keith Abrams

Vision

Shandra Harris

Augmentative Communication

Brandi Lancaster

Traumatic Brain Injury

Brandi Lancaster

Audiology

Jeff Cox

Attendance Advisor

Dina Ratzlaff

Family Support Liaison

Peyton Connery

Behavior Consultant

N/A

Home School

Michael Neilson

Transition Network Facilitator

Sherri Townsend, Joshua Barbour

Severe Disabilities Consultant

Jennifer Barabe-Snyder



Linn Benton Lincoln Education Service District

905 4th Avenue SE, Albany, OR 97321 ~ 541.812.2600 ~ www.lblesd.k12.or.us



2022-2023



Corvallis School District Services provided through LBL ESD

District Executive Summary

- Penny York / Frank Bricker, LBL ESD Board Directors, CSD Region
- Tina Baker / Sarah Finger McDonald, LBL ESD Budget Committee, CSD Region
- CSD receives 17.1% of Local Service Plan funding and is the 2nd largest in student enrollment out of the 12 component districts
- Districts are able to transit up to 50% of their available Tier 2 resources. At this time, CSD is transiting \$477,569 which represents 50%

ADMw Over the Years

	ESD	CSD
FY 2015/16	45,241.2	7,830.1
FY 2016/17	45,019.9	7,853.5
FY 2017/18	44,872.8	7,942.1
FY 2018/19	45,092.2	7,942.1
FY 2019/20	44,912.5	7,847.5
FY 2020/21	47,337.1	7,715.5
FY 2021/22	43,864	7,514

2021-22 Quick Stats

129

Number of
BIS Tickets

21

Number of
Network Tickets

848

Number of
SIS Tickets

2000
mbps

Total ISP Purchased

LBL ESD serves districts, schools and students by providing equitable, flexible and effective educational services through economy of scale. Our vision is to be a responsive and transparent organization that supports districts by embracing continuous improvement in helping every child succeed.

Services Data

Note: This data is based on fiscal year 2021-2022

ESD Staff Serving District

Tier 1

Special Education — Tier 1 Services by Student

	ESD	CSD
Audiology Hearing Screenings	4324	914
Audiology Evaluations	23	2
Mild/Moderate Special Ed Supports K-12 (PT)	104	19
Mild/Moderate Special Ed Supports K-12 (OT)	602	84
Mild/Moderate Special Ed Supports K-12 (Aug Comm)	212	41
In-Center Special Education Evaluations	159	34
In-District and Assigned Special Education Evaluations	427	55
Severe Disability Supports	160	39
Early Intervention Evaluations	354	61
Early Childhood Special Education Evaluations	402	68

Special Education — Tier 1 Services by Hours

	ESD	CSD
Interpreter, District Requests	72.32	0
Interpreter, In-Center Evaluations	276.3	36.75
Translation, District Requests	354.5	0
Translation, In-Center Evaluations	136.47	8.67

Grants

EI/ECSE

	ESD	CSD
Early Intervention Services	150	13
Early Childhood Special Education Services	749	102
Students Transitioned to Kindergarten	226	32

Cascade Regional — Low Incidence, High Needs

	ESD	CSD
Vision	46	12
Hearing	61	17
Physical Therapy	45	8
Occupational Therapy	42	8
Autism Spectrum Disorder	617	107
Traumatic Brain Injury	14	2
Total # of K-12 Regional Low Incidence Disabilities	827	155

Other Services

	ESD	CSD
Attendance	1065	112
Behavior Specialist	112	0
Family Support Liaison	130	0
Youth Transition Services	0	0

School Psychologist

Dawn Meier, Christine van Belle, Samantha Hirsch

Learning Consultant

Abbie Hansen

Speech Language Pathologist

N/A

Autism

Michelle Neilson

Deaf/Hard Hearing

Charissa Lane, Don Dorman

Occupational Therapist

Grace Newton, Kristen Rademacher

Physical Therapist

(Assign as needed)

Vision

Erin Keller, Dan Glowicki, Shandra Harris

Augmentative Communication

Mary Turner

Traumatic Brain Injury

Brandi Lancaster

Audiology

Jeff Cox

Attendance Advisor

Dina Ratzlaff, Kelly Clement

Family Support Liaison

N/A

Behavior Consultant

N/A

Home School

Michael Neilson

Transition Network Facilitator

Sherri Townsend, Joshua Barbour

Severe Disabilities Consultant

Jennifer Barabe-Snyder



Linn Benton Lincoln Education Service District

905 4th Avenue SE, Albany, OR 97321 ~ 541.812.2600 ~ www.lblesd.k12.or.us



2022-2023



Greater Albany Public Schools

Services provided through LBL ESD

District Executive Summary

- Frank Bricker / Miriam Cummins / Jean Wooten, LBL ESD Board Directors, GAPS Region
- Tina Baker / Michael Thomson / Richard Moore, LBL ESD Budget Committee, GAPS Region
- GAPS receives 24.2% of Local Service Plan funding and is the largest in student enrollment out of the 12 component districts
- Districts are able to transit up to 50% of their available Tier 2 resources. At this time, GAPS is transiting \$438,924 which represents 34.0%

ADMw Over the Years

	ESD	GAPS
FY 2015/16	45,241.2	11,494.7
FY 2016/17	45,019.9	11,494.7
FY 2017/18	44,872.8	11,240.5
FY 2018/19	45,092.2	11,167.7
FY 2019/20	44,912.5	11,030.2
FY 2020/21	47,337.1	10,806.1
FY 2021/22	43,864	10,771

2021-22 Quick Stats

144

Number of
BIS Tickets

87

Number of
Network Tickets

1420

Number of
SIS Tickets

3000
mbps

Total ISP Purchased

LBL ESD serves districts, schools and students by providing equitable, flexible and effective educational services through economy of scale. Our vision is to be a responsive and transparent organization that supports districts by embracing continuous improvement in helping every child succeed.

Services Data

Note: This data is based on fiscal year 2021-2022

ESD Staff Serving District

Tier 1

Special Education — Tier 1 Services by Student

	ESD	GAPS
Audiology Hearing Screenings	4324	1366
Audiology Evaluations	23	10
Mild/Moderate Special Ed Supports K-12 (PT)	104	27
Mild/Moderate Special Ed Supports K-12 (OT)	602	158
Mild/Moderate Special Ed Supports K-12 (Aug Comm)	212	76
In-Center Special Education Evaluations	159	71
In-District and Assigned Special Education Evaluations	427	78
Severe Disability Supports	160	41
Early Intervention Evaluations	354	115
Early Childhood Special Education Evaluations	402	135

Special Education — Tier 1 Services by Hours

	ESD	GAPS
Interpreter, District Requests	72.32	3
Interpreter, In-Center Evaluations	276.3	139.38
Translation, District Requests	354.5	0
Translation, In-Center Evaluations	136.47	103.05

Grants

EI/ECSE

	ESD	GAPS
Early Intervention Services	150	51
Early Childhood Special Education Services	749	251
Students Transitioned to Kindergarten	226	60

Cascade Regional — Low Incidence, High Needs

	ESD	GAPS
Vision	46	8
Hearing	61	19
Physical Therapy	45	14
Occupational Therapy	42	14
Autism Spectrum Disorder	617	199
Traumatic Brain Injury	14	2
Total # of K-12 Regional Low Incidence Disabilities	827	256

Other Services

	ESD	GAPS
Attendance	1065	0
Behavior Specialist	112	63
Family Support Liaison	130	0
Youth Transition Services	0	0

School Psychologist

Ari Hupp, Sare Kessinger, Julie Wickwire, Billie Cannon, Mercedes Soto (Intern)

Learning Consultant

N/A

Speech Language Pathologist

N/A

Autism

Amanda Stenberg

Deaf/Hard Hearing

Don Dorman, Philip Mills

Occupational Therapist

Lisa Baker (OTA), Karen Cunningham, Nikki MacKinder, Calista Huffman

Physical Therapist

Jessy Schley, Keith Abrams

Vision

Jennifer Orton, Erin Keller

Augmentative Communication

Jennifer Villaruel, Laura Daly

Traumatic Brain Injury

Brandi Lancaster

Audiology

Jeff Cox

Attendance Advisor

N/A

Family Support Liaison

Petra Ott

Behavior Consultant

Sharon Kerrisk

Home School

Michael Neilson

Transition Network Facilitator

Sherri Townsend, Joshua Barbour

Severe Disabilities Consultant

Jennifer Barabe-Snyder



Linn Benton Lincoln Education Service District

905 4th Avenue SE, Albany, OR 97321 ~ 541.812.2600 ~ www.lblesd.k12.or.us



2022-2023



Harrisburg School District

Services provided through LBL ESD

District Executive Summary

- Roger Irvin, LBL ESD Board Director, HSD Region
- Sarah Fay, LBL ESD Budget Committee, HSD Region
- HSD receives 2.2% of Local Service Plan funding and is the 9th largest in student enrollment out of the 12 component districts
- Districts are able to transit up to 50% of their available Tier 2 resources. At this time, HSD is transiting \$14 which represents 0.0%

ADMw Over the Years

	ESD	HSD
FY 2015/16	45,241.2	1,083.4
FY 2016/17	45,019.9	1,096.3
FY 2017/18	44,872.8	1,096.3
FY 2018/19	45,092.2	1,044.7
FY 2019/20	44,912.5	1,029.5
FY 2020/21	47,337.1	962.3
FY 2021/22	43,864	943

2021-22 Quick Stats

66

Number of
BIS Tickets

64

Number of
Network Tickets

255

Number of
SIS Tickets

1000
mbps

Total ISP Purchased

LBL ESD serves districts, schools and students by providing equitable, flexible and effective educational services through economy of scale. Our vision is to be a responsive and transparent organization that supports districts by embracing continuous improvement in helping every child succeed.

Services Data

Note: This data is based on fiscal year 2021-2022

ESD Staff Serving District

Tier 1

Special Education — Tier 1 Services by Student	ESD	HSD
Audiology Hearing Screenings	4324	116
Audiology Evaluations	23	1
Mild/Moderate Special Ed Supports K-12 (PT)	104	3
Mild/Moderate Special Ed Supports K-12 (OT)	602	14
Mild/Moderate Special Ed Supports K-12 (Aug Comm)	212	7
In-Center Special Education Evaluations	159	3
In-District and Assigned Special Education Evaluations	427	23
Severe Disability Supports	160	6
Early Intervention Evaluations	354	9
Early Childhood Special Education Evaluations	402	9

Special Education — Tier 1 Services by Hours

Interpreter, District Requests	72.32	0.5
Interpreter, In-Center Evaluations	276.3	0
Translation, District Requests	354.5	221.25
Translation, In-Center Evaluations	136.47	0

Grants

EI/ECSE	ESD	HSD
Early Intervention Services	150	2
Early Childhood Special Education Services	749	15
Students Transitioned to Kindergarten	226	3

Cascade Regional — Low Incidence, High Needs

Vision	46	0
Hearing	61	1
Physical Therapy	45	3
Occupational Therapy	42	3
Autism Spectrum Disorder	617	14
Traumatic Brain Injury	14	2
Total # of K-12 Regional Low Incidence Disabilities	827	23

Other Services

Attendance	1065	70
Behavior Specialist	112	18
Family Support Liaison	130	5
Youth Transition Services	0	0

School Psychologist

Calvin Klingensmith, Mercedes Soto (Intern)

Learning Consultant

Diana Wallace

Speech Language Pathologist

Hannah Embry

Autism

Michelle Neilson

Deaf/Hard Hearing

Don Dorman

Occupational Therapist

Leslie Looney

Physical Therapist

Gail Baggett, Keith Abrams

Vision

TBD

Augmentative Communication

Mary Turner

Traumatic Brain Injury

Brandi Lancaster

Audiology

Jeff Cox

Attendance Advisor

Dina Ratzlaff

Family Support Liaison

Peyton Connery

Behavior Consultant

Keely Galon

Home School

Michael Neilson

Transition Network Facilitator

Sherri Townsend, Joshua Barbour

Severe Disabilities Consultant

Jennifer Barabe-Snyder



Linn Benton Lincoln Education Service District

905 4th Avenue SE, Albany, OR 97321 ~ 541.812.2600 ~ www.lblesd.k12.or.us



2022-2023



Lebanon Community Schools

Services provided through LBL ESD

District Executive Summary

- Amy Vctor, LBL ESD Board Director, LCS Region
- Nichole Piland, LBL ESD Budget Committee, LCS Region
- LCS receives 10.8% of Local Service Plan funding and is the 5th largest in student enrollment out of the 12 component districts
- Districts are able to transit up to 50% of their available Tier 2 resources. At this time, LCS is transiting \$205,500 which represents 29.3%

ADMw Over the Years

	ESD	LSD
FY 2015/16	45,241.2	5,069.2
FY 2016/17	45,019.9	5,069.2
FY 2017/18	44,872.8	4,939.0
FY 2018/19	45,092.2	4,937.8
FY 2019/20	44,912.5	4,928.5
FY 2020/21	47,337.1	4,651.4
FY 2021/22	43,864	4,707

2021-22 Quick Stats

71

Number of
BIS Tickets

17

Number of
Network Tickets

492

Number of
SIS Tickets

700
mbps

Total ISP Purchased

LBL ESD serves districts, schools and students by providing equitable, flexible and effective educational services through economy of scale. Our vision is to be a responsive and transparent organization that supports districts by embracing continuous improvement in helping every child succeed.

Services Data

Note: This data is based on fiscal year 2021-2022

ESD Staff Serving District

Tier 1

Special Education — Tier 1 Services by Student

	ESD	LCS
Audiology Hearing Screenings	4324	438
Audiology Evaluations	23	1
Mild/Moderate Special Ed Supports K-12 (PT)	104	18
Mild/Moderate Special Ed Supports K-12 (OT)	602	76
Mild/Moderate Special Ed Supports K-12 (Aug Comm)	212	18
In-Center Special Education Evaluations	159	16
In-District and Assigned Special Education Evaluations	427	42
Severe Disability Supports	160	21
Early Intervention Evaluations	354	48
Early Childhood Special Education Evaluations	402	49

Special Education — Tier 1 Services by Hours

	ESD	LCS
Interpreter, District Requests	72.32	0
Interpreter, In-Center Evaluations	276.3	8.75
Translation, District Requests	354.5	111.42
Translation, In-Center Evaluations	136.47	0

Grants

EI/ECSE

	ESD	LCS
Early Intervention Services	150	25
Early Childhood Special Education Services	749	110
Students Transitioned to Kindergarten	226	35

Cascade Regional — Low Incidence, High Needs

	ESD	LCS
Vision	46	6
Hearing	61	5
Physical Therapy	45	3
Occupational Therapy	42	3
Autism Spectrum Disorder	617	47
Traumatic Brain Injury	14	1
Total # of K-12 Regional Low Incidence Disabilities	827	65

Other Services

	ESD	LCS
Attendance	1065	513
Behavior Specialist	112	0
Family Support Liaison	130	0
Youth Transition Services	0	0

School Psychologist

Eric Hafner, Sare Kessinger, Jo Hilderbrand

Learning Consultant

Abbie Hansen

Speech Language Pathologist

Miriam Hutchins

Autism

Amanda Stenberg

Deaf/Hard Hearing

Melinda Gallegos

Occupational Therapist

Leslie Looney, Mary Ellen Tenney, Chelsea Jacot

Physical Therapist

Gail Baggett

Vision

Shandra Harris

Augmentative Communication

Brandi Lancaster

Traumatic Brain Injury

Brandi Lancaster

Audiology

Jeff Cox

Attendance Advisor

Anne Giacalone-Baker

Family Support Liaison

Melindy Hoeckle, Keely Huddleston

Behavior Consultant

N/A

Home School

Michael Neilson

Transition Network Facilitator

Sherri Townsend, Joshua Barbour

Severe Disabilities Consultant

Jennifer Barabe-Snyder



Linn Benton Lincoln Education Service District

905 4th Avenue SE, Albany, OR 97321 ~ 541.812.2600 ~ www.lblesd.k12.or.us



2022-2023



Lincoln County School District

Services provided through LBL ESD

District Executive Summary

- David Dunsdon / Roger Irvin, LBL ESD Board Directors, LCSD Region
- Ron Beck / Sarah Fay, LBL ESD Budget Committee, LCSD Region
- LCSD receives 15.3% of Local Service Plan funding and is the 3rd largest in student enrollment out of the 12 component districts
- Districts are able to transit up to 50% of their available Tier 2 resources. At this time, LCSD is transiting \$326,000 which represents 32.7%

ADMw Over the Years

	ESD	LCSD
FY 2015/16	45,241.2	6,857.1
FY 2016/17	45,019.9	6,965.7
FY 2017/18	44,872.8	6,996.0
FY 2018/19	45,092.2	7,003.4
FY 2019/20	44,912.5	7,030
FY 2020/21	47,337.1	6,684.7
FY 2021/22	43,864	6,734

2021-22 Quick Stats

97

Number of
BIS Tickets

14

Number of
Network Tickets

70

Number of
SIS Tickets

0
mbps

Total ISP Purchased

LBL ESD serves districts, schools and students by providing equitable, flexible and effective educational services through economy of scale. Our vision is to be a responsive and transparent organization that supports districts by embracing continuous improvement in helping every child succeed.

Services Data

Note: This data is based on fiscal year 2021-2022

ESD Staff Serving District

Tier 1

Special Education — Tier 1 Services by Student

	ESD	LCS D
Audiology Hearing Screenings	4324	685
Audiology Evaluations	23	4
Mild/Moderate Special Ed Supports K-12 (PT)	104	19
Mild/Moderate Special Ed Supports K-12 (OT)	602	153
Mild/Moderate Special Ed Supports K-12 (Aug Comm)	212	40
In-Center Special Education Evaluations	159	6
In-District and Assigned Special Education Evaluations	427	73
Severe Disability Supports	160	18
Early Intervention Evaluations	354	66
Early Childhood Special Education Evaluations	402	76

Special Education — Tier 1 Services by Hours

	ESD	LCS D
Interpreter, District Requests	72.32	47.95
Interpreter, In-Center Evaluations	276.3	62.25
Translation, District Requests	354.5	85.65
Translation, In-Center Evaluations	136.47	14

Grants

EI/ECSE

	ESD	LCS D
Early Intervention Services	150	33
Early Childhood Special Education Services	749	127
Students Transitioned to Kindergarten	226	40

Cascade Regional — Low Incidence, High Needs

	ESD	LCS D
Vision	46	11
Hearing	61	9
Physical Therapy	45	9
Occupational Therapy	42	8
Autism Spectrum Disorder	617	136
Traumatic Brain Injury	14	1
Total # of K-12 Regional Low Incidence Disabilities	827	175

Other Services

	ESD	LCS D
Attendance	1065	0
Behavior Specialist	112	0
Family Support Liaison	130	0
Youth Transition Services	0	0

School Psychologist

Kaitlin Davenport-Rackham, Jo Hilderbrand, Sare Kessinger

Learning Consultant

Jan Edwards, Diana Wallace

Speech Language Pathologist

N/A

Autism

Jill Sellers, Ryan Stanley

Deaf/Hard Hearing

Philip Mills

Occupational Therapist

Nikki MacKinder, Rachel Stankey, Calista Huffman, Grace Newton, Chelsea Jacot

Physical Therapist

Jessy Schley, Elana Tiberi

Vision

Erin Keller, Dan Glowicki

Augmentative Communication

Sarah Follett

Traumatic Brain Injury

Brandi Lancaster

Audiology

Jeff Cox

Attendance Advisor

Andrew Musick

Family Support Liaison

N/A

Behavior Consultant

N/A

Home School

Michael Neilson

Transition Network Facilitator

Joshua Barbour, Sherri Townsend

Severe Disabilities Consultant

Jennifer Barabe-Snyder



Linn Benton Lincoln Education Service District

905 4th Avenue SE, Albany, OR 97321 ~ 541.812.2600 ~ www.lblesd.k12.or.us

2022-2023



Monroe School District

Services provided through LBL ESD

District Executive Summary

- Roger Irvin, LBL ESD Board Director, MSD Region
- Sarah Fay, LBL ESD Budget Committee, MSD Region
- MSD receives 1.2% of Local Service Plan funding and is the 12th largest in student enrollment out of the 12 component districts
- Districts are able to transit up to 50% of their available Tier 2 resources. At this time, MSD is transiting \$0 which represents 0.0%

ADMw Over the Years

	ESD	MSD
FY 2015/16	45,241.2	629.6
FY 2016/17	45,019.9	629.6
FY 2017/18	44,872.8	613.9
FY 2018/19	45,092.2	592
FY 2019/20	44,912.5	531.4
FY 2020/21	47,337.1	509.1
FY 2021/22	43,864	514

2021-22 Quick Stats

50

Number of
BIS Tickets

26

Number of
Network Tickets

145

Number of
SIS Tickets

500
mbps

Total ISP Purchased

LBL ESD serves districts, schools and students by providing equitable, flexible and effective educational services through economy of scale. Our vision is to be a responsive and transparent organization that supports districts by embracing continuous improvement in helping every child succeed.

Services Data

Note: This data is based on fiscal year 2021-2022

ESD Staff Serving District

Tier 1

Special Education — Tier 1 Services by Student

	ESD	MSD
Audiology Hearing Screenings	4324	60
Audiology Evaluations	23	1
Mild/Moderate Special Ed Supports K-12 (PT)	104	2
Mild/Moderate Special Ed Supports K-12 (OT)	602	10
Mild/Moderate Special Ed Supports K-12 (Aug Comm)	212	0
In-Center Special Education Evaluations	159	3
In-District and Assigned Special Education Evaluations	427	14
Severe Disability Supports	160	1
Early Intervention Evaluations	354	6
Early Childhood Special Education Evaluations	402	8

Special Education — Tier 1 Services by Hours

	ESD	MSD
Interpreter, District Requests	72.32	0.67
Interpreter, In-Center Evaluations	276.3	6.92
Translation, District Requests	354.5	38.5
Translation, In-Center Evaluations	136.47	7

Grants

EI/ECSE

	ESD	MSD
Early Intervention Services	150	0
Early Childhood Special Education Services	749	12
Students Transitioned to Kindergarten	226	1

Cascade Regional — Low Incidence, High Needs

	ESD	MSD
Vision	46	0
Hearing	61	1
Physical Therapy	45	1
Occupational Therapy	42	0
Autism Spectrum Disorder	617	8
Traumatic Brain Injury	14	0
Total # of K-12 Regional Low Incidence Disabilities	827	10

Other Services

	ESD	MSD
Attendance	1065	43
Behavior Specialist	112	0
Family Support Liaison	130	0
Youth Transition Services	0	0

School Psychologist Christine van Belle

Learning Consultant

Kristen Nebeker

Speech Language Pathologist

Jessica Peterson

Autism

Michelle Neilson

Deaf/Hard Hearing

Melinda Gallegos

Occupational Therapist

Looney

Physical Therapist

Gail Baggett

Vision

Dan Glowicki

Augmentative Communication

Mary Turner

Traumatic Brain Injury

Brandi Lancaster

Audiology

Jeff Cox

Attendance Advisor

Dina Ratzlaff

Family Support Liaison

Peyton Connery

Behavior Consultant

N/A

Home School

Michael Neilson

Transition Network Facilitator

Sherri Townsend, Joshua Barbour

Severe Disabilities Consultant

Jennifer Barabe-Snyder



Linn Benton Lincoln Education Service District

905 4th Avenue SE, Albany, OR 97321 ~ 541.812.2600 ~ www.lblesd.k12.or.us



2022-2023



Philomath School District Services provided through LBL ESD

District Executive Summary

- Roger Irvin, LBL ESD Board Director, PSD Region
- Sarah Fay, LBL ESD Budget Committee, PSD Region
- PSD receives 4.2% of Local Service Plan funding and is the 7th largest in student enrollment out of the 12 component districts
- Districts are able to transit up to 50% of their available Tier 2 resources. At this time, PSD is transiting \$7,500 which represents 3.9%

ADMw Over the Years

	ESD	PSD
FY 2015/16	45,241.2	1,895.7
FY 2016/17	45,019.9	1,903.1
FY 2017/18	44,872.8	1,931.9
FY 2018/19	45,092.2	1,931.9
FY 2019/20	44,912.5	1,939.8
FY 2020/21	47,337.1	1,902.4
FY 2021/22	43,864	1,863

2021-22 Quick Stats

51

Number of
BIS Tickets

23

Number of
Network Tickets

399

Number of
SIS Tickets

1000
mbps

Total ISP Purchased

LBL ESD serves districts, schools and students by providing equitable, flexible and effective educational services through economy of scale. Our vision is to be a responsive and transparent organization that supports districts by embracing continuous improvement in helping every child succeed.

Services Data

Note: This data is based on fiscal year 2021-2022

ESD Staff Serving District

Tier 1

Special Education — Tier 1 Services by Student

	ESD	PSD
Audiology Hearing Screenings	4324	217
Audiology Evaluations	23	1
Mild/Moderate Special Ed Supports K-12 (PT)	104	0
Mild/Moderate Special Ed Supports K-12 (OT)	602	22
Mild/Moderate Special Ed Supports K-12 (Aug Comm)	212	5
In-Center Special Education Evaluations	159	7
In-District and Assigned Special Education Evaluations	427	11
Severe Disability Supports	160	11
Early Intervention Evaluations	354	14
Early Childhood Special Education Evaluations	402	10

Special Education — Tier 1 Services by Hours

	ESD	PSD
Interpreter, District Requests	72.32	0
Interpreter, In-Center Evaluations	276.3	15.25
Translation, District Requests	354.5	27.25
Translation, In-Center Evaluations	136.47	3

Grants

EI/ECSE

	ESD	PSD
Early Intervention Services	150	7
Early Childhood Special Education Services	749	16
Students Transitioned to Kindergarten	226	13

Cascade Regional — Low Incidence, High Needs

	ESD	PSD
Vision	46	2
Hearing	61	2
Physical Therapy	45	1
Occupational Therapy	42	0
Autism Spectrum Disorder	617	27
Traumatic Brain Injury	14	1
Total # of K-12 Regional Low Incidence Disabilities	827	33

Other Services

	ESD	PSD
Attendance	1065	0
Behavior Specialist	112	5
Family Support Liaison	130	48
Youth Transition Services	0	0

School Psychologist

Lorie Blackman

Learning Consultant

Abbie Hansen

Speech Language Pathologist N/A

Autism

Michelle Neilson

Deaf/Hard Hearing

Don Dorman

Occupational Therapist Kristen

Rademacher

Physical Therapist

Jessy Schley

Vision

Dan Glowicki

Augmentative Communication

Sarah Follett

Traumatic Brain Injury Brandi

Lancaster

Audiology

Jeff Cox

Attendance Advisor

N/A

Family Support Liaison Peggy Ring

Behavior Consultant

Shelly Gruver

Home School

Michael Neilson

Transition Network Facilitator

Joshua Barber, Sherri Townsend

Severe Disabilities Consultant

Jennifer Barabe-Snyder



Linn Benton Lincoln Education Service District

905 4th Avenue SE, Albany, OR 97321 ~ 541.812.2600 ~ www.lblesd.k12.or.us



2022-2023



Santiam Canyon School District

Services provided through LBL ESD

District Executive Summary

- Jean Wooten, LBL ESD Board Director, SCSD Region
- Richard Moore, LBL ESD Budget Committee, SCSD Region
- SCSD receives 12% of Local Service Plan funding and is the 4th largest in student enrollment out of the 12 component districts
- Districts are able to transit up to 50% of their available Tier 2 resources. At this time, SCSD is transiting \$0 which represents 0.0%

ADMw Over the Years

	ESD	SCSD
FY 2015/16	45,241.2	5,126.7
FY 2016/17	45,019.9	5,126.7
FY 2017/18	44,872.8	5,260
FY 2018/19	45,092.2	5,458
FY 2019/20	44,912.5	5,458
FY 2020/21	47,337.1	6,079.1
FY 2021/22	43,864	3,861

2021-22 Quick Stats

37

Number of
BIS Tickets

3

Number of
Network Tickets

117

Number of
SIS Tickets

0
mbps

Total ISP Purchased

LBL ESD serves districts, schools and students by providing equitable, flexible and effective educational services through economy of scale. Our vision is to be a responsive and transparent organization that supports districts by embracing continuous improvement in helping every child succeed.

Services Data

Note: This data is based on fiscal year 2021-2022

ESD Staff Serving District

Tier 1

Special Education — Tier 1 Services by Student	ESD	SCSD
Audiology Hearing Screenings	4324	94
Audiology Evaluations	23	0
Mild/Moderate Special Ed Supports K-12 (PT)	104	5
Mild/Moderate Special Ed Supports K-12 (OT)	602	8
Mild/Moderate Special Ed Supports K-12 (Aug Comm)	212	2
In-Center Special Education Evaluations	159	4
In-District and Assigned Special Education Evaluations	427	26
Severe Disability Supports	160	1
Early Intervention Evaluations	354	2
Early Childhood Special Education Evaluations	402	0

Special Education — Tier 1 Services by Hours

Interpreter, District Requests	72.32	0
Interpreter, In-Center Evaluations	276.3	1
Translation, District Requests	354.5	0
Translation, In-Center Evaluations	136.47	0

Grants

EI/ECSE	ESD	SCSD
Early Intervention Services	150	2
Early Childhood Special Education Services	749	1
Students Transitioned to Kindergarten	226	1

Cascade Regional — Low Incidence, High Needs

Vision	46	0
Hearing	61	2
Physical Therapy	45	1
Occupational Therapy	42	1
Autism Spectrum Disorder	617	5
Traumatic Brain Injury	14	1
Total # of K-12 Regional Low Incidence Disabilities	827	10

Other Services

Attendance	1065	0
Behavior Specialist	112	0
Family Support Liaison	130	27
Youth Transition Services	0	0

School Psychologist

Caitlin St. Peter

Learning Consultant

Joya Meeker

Speech Language Pathologist

Rebecca Patching

Autism

Kayla Hunt

Deaf/Hard Hearing

Don Dorman

Occupational Therapist

Mary Ellen Tenney

Physical Therapist

Jessy Schley, Keith Abrams

Vision

Jennifer Orton

Augmentative Communication

Mary Turner

Traumatic Brain Injury

Brandi Lancaster

Audiology

Jeff Cox

Attendance Advisor

N/A

Family Support Liaison

Christina Hoeckle, Sierra Holaday

Behavior Consultant

N/A

Home School

Michael Neilson

Transition Network Facilitator

Joshua Barbour, Sherri Townsend

Severe Disabilities Consultant

Jennifer Barabe-Snyder



Linn Benton Lincoln Education Service District

905 4th Avenue SE, Albany, OR 97321 ~ 541.812.2600 ~ www.lblesd.k12.or.us



2022-2023



Scio School District

Services provided through LBL ESD

District Executive Summary

- Jean Wooten, LBL ESD Board Director, SSD Region
- Richard Moore, LBL ESD Budget Committee, SSD Region
- SSD receives 3.7% of Local Service Plan funding and is the 8th largest in student enrollment out of the 12 component districts
- Districts are able to transit up to 50% of their available Tier 2 resources. At this time, SSD is transiting \$196,540 which represents 29.3%

ADMw Over the Years

	ESD	SSD
FY 2015/16	45,241.2	1,324.2
FY 2016/17	45,019.9	964.1
FY 2017/18	44,872.8	964.1
FY 2018/19	45,092.2	970
FY 2019/20	44,912.5	1,073
FY 2020/21	47,337.1	3,565.2
FY 2021/22	43,864	2,401

2021-22 Quick Stats

16

Number of
BIS Tickets

3

Number of
Network Tickets

155

Number of
SIS Tickets

400
mbps

Total ISP Purchased

LBL ESD serves districts, schools and students by providing equitable, flexible and effective educational services through economy of scale. Our vision is to be a responsive and transparent organization that supports districts by embracing continuous improvement in helping every child succeed.

Services Data

Note: This data is based on fiscal year 2021-2022

ESD Staff Serving District

Tier 1

Special Education — Tier 1 Services by Student	ESD	SSD
Audiology Hearing Screenings	4324	136
Audiology Evaluations	23	0
Mild/Moderate Special Ed Supports K-12 (PT)	104	3
Mild/Moderate Special Ed Supports K-12 (OT)	602	13
Mild/Moderate Special Ed Supports K-12 (Aug Comm)	212	4
In-Center Special Education Evaluations	159	3
In-District and Assigned Special Education Evaluations	427	17
Severe Disability Supports	160	4
Early Intervention Evaluations	354	3
Early Childhood Special Education Evaluations	402	3

Special Education — Tier 1 Services by Hours

Interpreter, District Requests	72.32	4
Interpreter, In-Center Evaluations	276.3	6
Translation, District Requests	354.5	0
Translation, In-Center Evaluations	136.47	0.75

Grants

EI/ECSE	ESD	SSD
Early Intervention Services	150	4
Early Childhood Special Education Services	749	53
Students Transitioned to Kindergarten	226	18

Cascade Regional — Low Incidence, High Needs

Vision	46	2
Hearing	61	0
Physical Therapy	45	0
Occupational Therapy	42	0
Autism Spectrum Disorder	617	8
Traumatic Brain Injury	14	0
Total # of K-12 Regional Low Incidence Disabilities	827	10

Other Services

Attendance	1065	23
Behavior Specialist	112	19
Family Support Liaison	130	39
Youth Transition Services	0	0

School Psychologist

Ari Hupp

Learning Consultant

Joya Meeker

Speech Language Pathologist

Lee Ann McAvoy, Christine Simpson

Autism

Kayla Hunt

Deaf/Hard Hearing

Don Dorman

Occupational Therapist

Mary Ellen Tenney

Physical Therapist

Jessy Schley, Keith Abrams

Vision

Shandra Harris

Augmentative Communication

Brandi Lancaster

Traumatic Brain Injury

Brandi Lancaster

Audiology

Jeff Cox

Attendance Advisor

Dina Ratzlaff

Family Support Liaison

Christina Hoeckle

Behavior Consultant

Mark Summers

Home School

Michael Neilson

Transition Network Facilitator

Sherri Townsend, Joshua Barbour

Severe Disabilities Consultant

Jennifer Barabe-Snyder



Linn Benton Lincoln Education Service District

905 4th Avenue SE, Albany, OR 97321 ~ 541.812.2600 ~ www.lblesd.k12.or.us



2022-2023



Sweet Home School District Services provided through LBL ESD

District Executive Summary

- Jean Wooten, LBL ESD Board Director, SHSD Region
- Richard Moore, LBL ESD Budget Committee, SHSD Region
- SHSD receives 6% of Local Service Plan funding and is the 6th largest in student enrollment out of the 12 component districts
- Districts are able to transit up to 50% of their available Tier 2 resources. At this time, SHSD is transiting \$0 which represents 0.0%

ADMw Over the Years

	ESD	SHSD
FY 2015/16	45,241.2	2,778.2
FY 2016/17	45,019.9	2,778.2
FY 2017/18	44,872.8	2,726.7
FY 2018/19	45,092.2	2,734.3
FY 2019/20	44,912.5	2,734.3
FY 2020/21	47,337.1	2,716.7
FY 2021/22	43,864	2,646

2021-22 Quick Stats

35

Number of
BIS Tickets

33

Number of
Network Tickets

363

Number of
SIS Tickets

1000
mbps

Total ISP Purchased

LBL ESD serves districts, schools and students by providing equitable, flexible and effective educational services through economy of scale. Our vision is to be a responsive and transparent organization that supports districts by embracing continuous improvement in helping every child succeed.

Services Data

Note: This data is based on fiscal year 2021-2022

ESD Staff Serving District

Tier 1

Special Education — Tier 1 Services by Student

	ESD	SHSD
Audiology Hearing Screenings	4324	223
Audiology Evaluations	23	3
Mild/Moderate Special Ed Supports K-12 (PT)	104	4
Mild/Moderate Special Ed Supports K-12 (OT)	602	39
Mild/Moderate Special Ed Supports K-12 (Aug Comm)	212	17
In-Center Special Education Evaluations	159	11
In-District and Assigned Special Education Evaluations	427	46
Severe Disability Supports	160	15
Early Intervention Evaluations	354	25
Early Childhood Special Education Evaluations	402	53

Special Education — Tier 1 Services by Hours

	ESD	SHSD
Interpreter, District Requests	72.32	0
Interpreter, In-Center Evaluations	276.3	0
Translation, District Requests	354.5	0
Translation, In-Center Evaluations	136.47	0

Grants

EI/ECSE

	ESD	SHSD
Early Intervention Services	150	4
Early Childhood Special Education Services	749	53
Students Transitioned to Kindergarten	226	18

Cascade Regional — Low Incidence, High Needs

	ESD	SHSD
Vision	46	3
Hearing	61	4
Physical Therapy	45	2
Occupational Therapy	42	2
Autism Spectrum Disorder	617	42
Traumatic Brain Injury	14	4
Total # of K-12 Regional Low Incidence Disabilities	827	57

Other Services

	ESD	SHSD
Attendance	1065	283
Behavior Specialist	112	0
Family Support Liaison	130	8
Youth Transition Services	0	0

School Psychologist

Brittney Luxon

Learning Consultant

Kelley Guilliot

Speech Language Pathologist

Laila Oakes

Autism

Kayla Hunt

Deaf/Hard Hearing

Melinda Gallegos

Occupational Therapist

Pamela Schindler

Physical Therapist

Gail Baggett

Vision

Jennifer Orton

Augmentative Communication

Laura Daly

Traumatic Brain Injury

Brandi Lancaster

Audiology

Jeff Cox

Attendance Advisor

N/A

Family Support Liaison

Rich Guzman

Behavior Consultant

N/A

Home School

Michael Neilson

Transition Network Facilitator

Sherri Townsend

Severe Disabilities Consultant

Jennifer Barabe-Snyder



Linn Benton Lincoln Education Service District

905 4th Avenue SE, Albany, OR 97321 ~ 541.812.2600 ~ www.lblesd.k12.or.us

