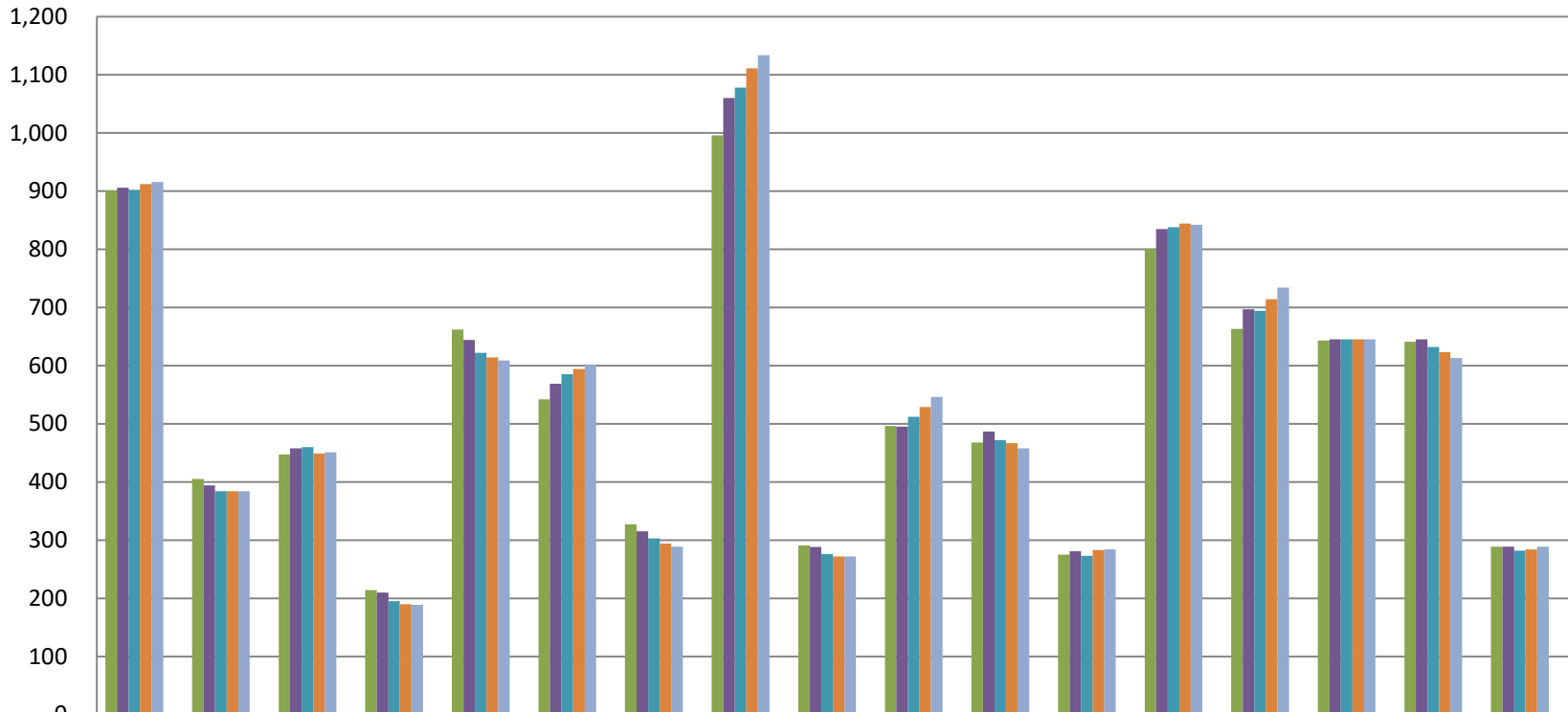


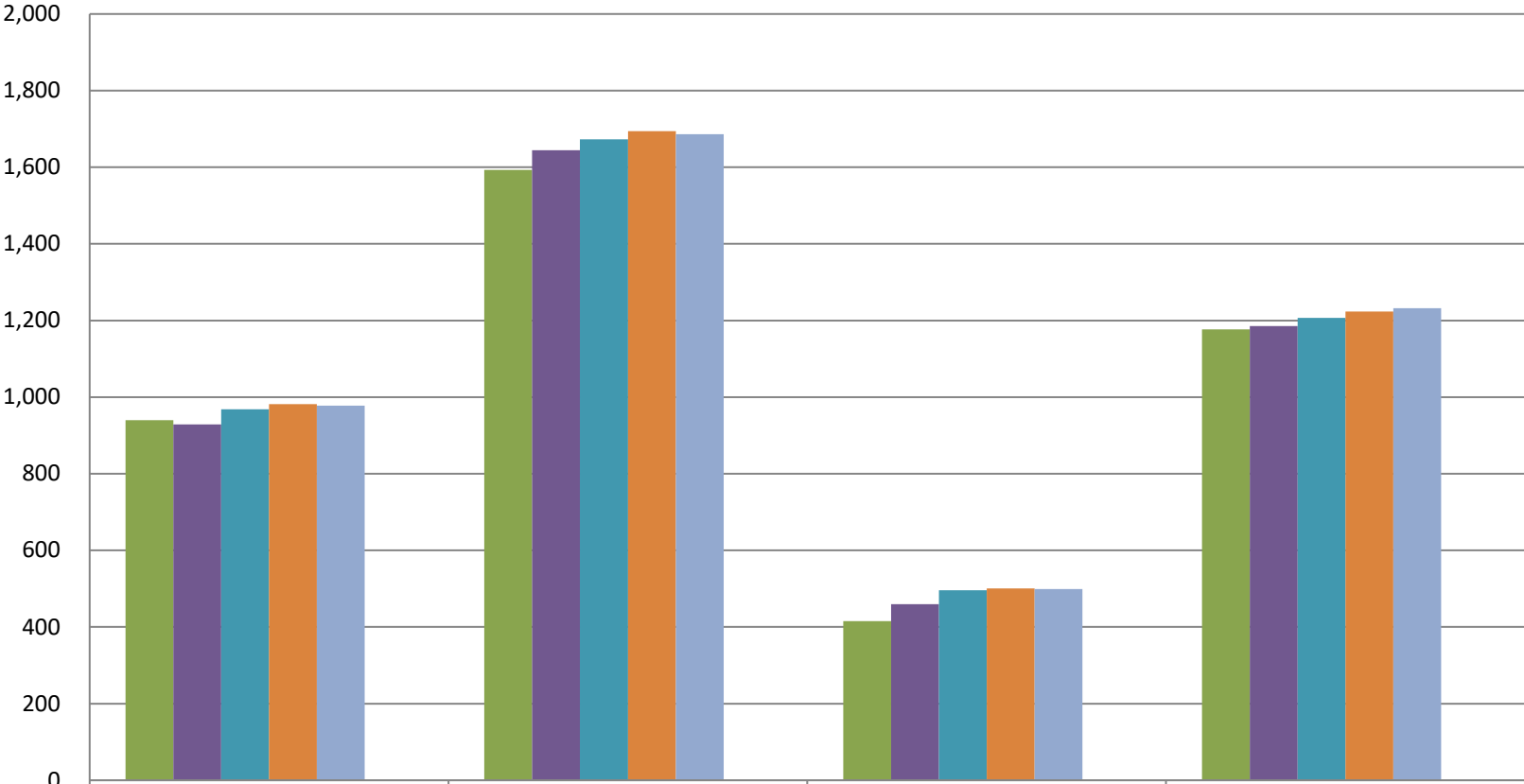
Osseo Area Schools Elementary Enrollment Projection



	BW	BG	CI	CV	EB	EC	FO	FB	GC	OAK	PL	PB	RC	RL	WVR	WD	ZW
FY 2024	901	405	447	214	662	542	327	996	291	496	468	275	801	663	643	641	289
FY 2025	906	394	458	210	644	569	315	1,060	288	495	487	281	835	697	645	645	289
FY 2026	902	384	460	195	622	585	303	1,078	276	512	472	273	838	694	645	632	282
FY 2027	912	384	449	190	614	594	294	1,111	272	529	467	283	844	714	645	623	284
FY 2028	916	384	451	189	609	602	289	1,134	272	546	458	284	842	734	645	613	289
5 yr. growth	1.66%	-5.19%	0.89%	-11.68%	-8.01%	11.07%	-11.62%	13.86%	-6.53%	10.08%	-2.14%	3.27%	5.12%	10.71%	0.31%	-4.37%	0.00%

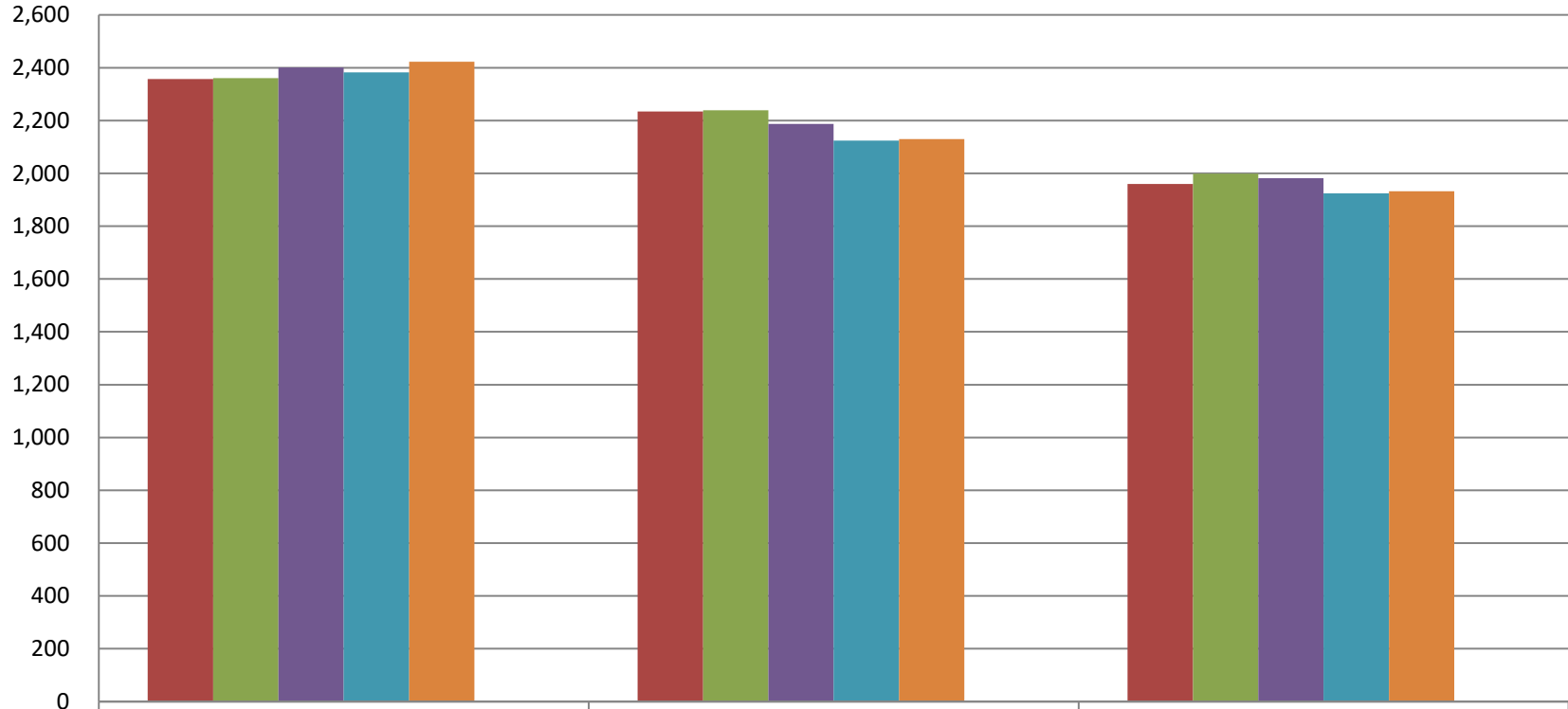
■ FY 2024
 ■ FY 2025
 ■ FY 2026
 ■ FY 2027
 ■ 5 yr. growth

Osseo Area Schools Middle School Enrollment Projection



	BMS	MGMS	NVMS	OMS
FY 2024	940	1,593	415	1,177
FY 2025	929	1,645	459	1,185
FY 2026	968	1,673	496	1,207
FY 2027	982	1,694	501	1,224
FY 2028	978	1,686	499	1,232
5 yr. growth	4.04%	5.84%	20.24%	4.67%

Osseo Area Schools Senior High Enrollment Projection



	MGS	OS	PCS
FY 2024	2,357	2,234	1,960
FY 2025	2,361	2,239	1,999
FY 2026	2,401	2,187	1,981
FY 2027	2,382	2,124	1,924
FY 2028	2,423	2,130	1,932
5 yr. growth	2.80%	-4.66%	-1.43%

■ FY 2024
 ■ FY 2025
 ■ FY 2026
 ■ FY 2027
 ■ FY 2028