



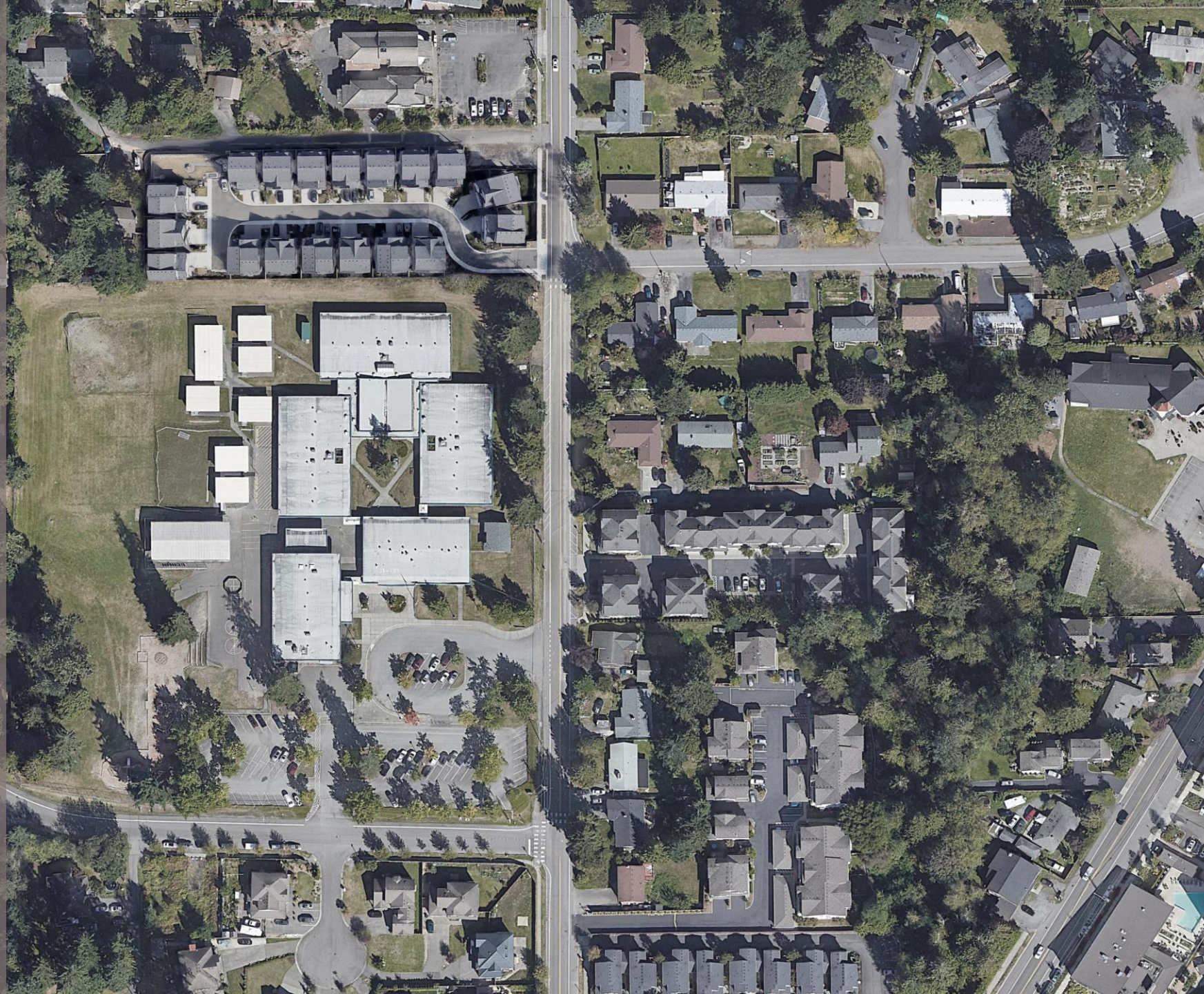
# Oak Heights Elementary School Replacement PTA Meeting

Edmonds School District

2.13.2023

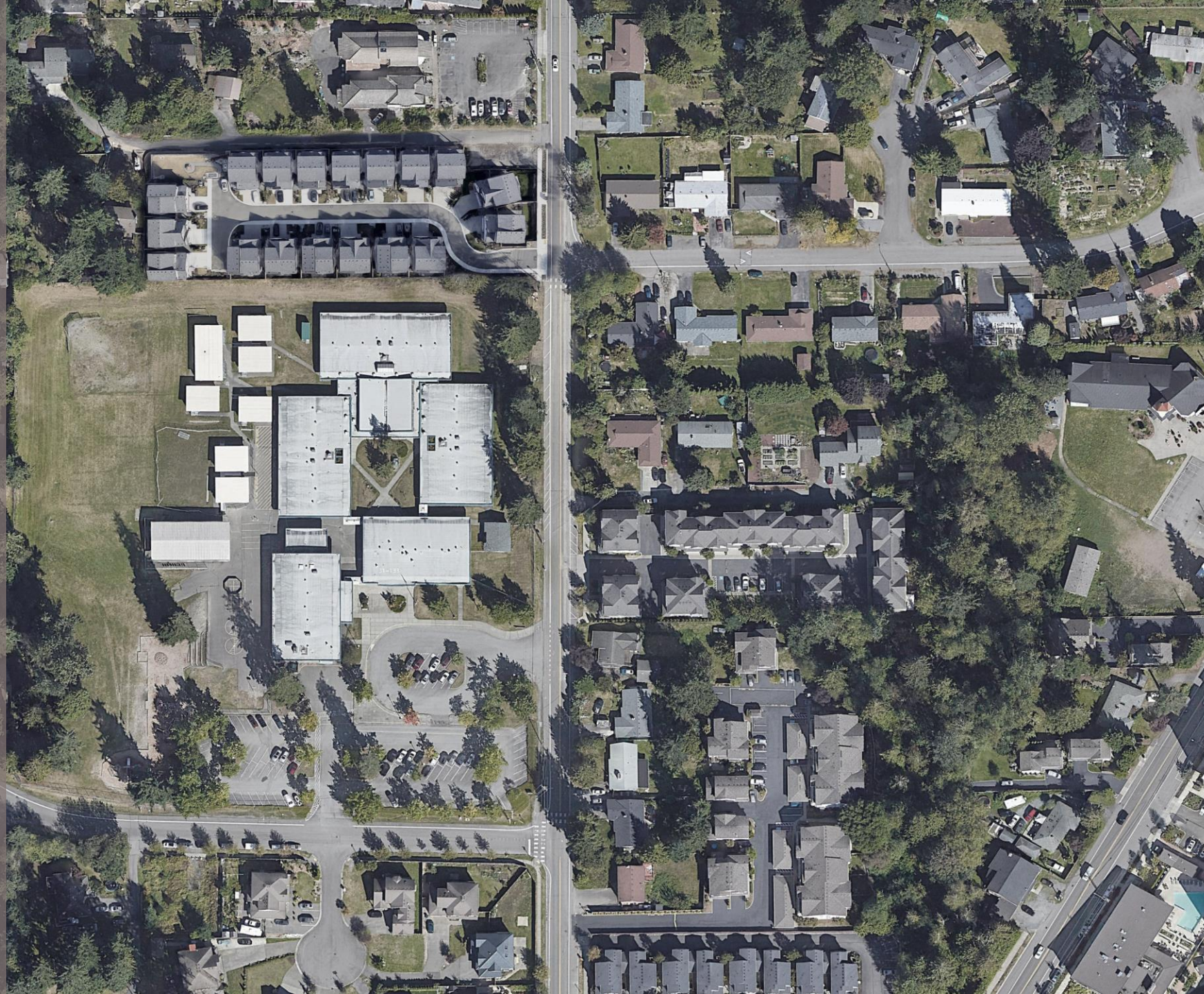
# Agenda

- » Introductions
- » Goals
- » Site & Building Design
- » Questions



# Agenda

- » Introductions
- » Goals
- » Site & Building Design
- » Questions



# District Strategic Plan

## ENGAGEMENT



With our students, staff, families and entire community

## EXCELLENCE



Strive for the most rigorous academic programs to serve ALL kids

## EQUITY



Disrupt institutional bias based on race, background or circumstances

# Goals

## EQUITY

### Healing-Centered

#### Build Belonging

Build a sense of belonging for each and every student, visibly embracing each student's culture and identity through what they see, read and hear



- Support self-identity by visibly incorporating student's cultures & identities throughout the school

- Include all students by incorporating visuals of all cultures throughout the world, such as BLM, Hispanic and LGBTQ+ artwork & information

- Bring native languages into the classroom and in communications -- make space for the inclusion & education of all cultures



- Thoroughly incorporate spaces for cultural connections & learning through display, cultivating gardens with cultural foods & cooking

- Connect the school to the boarder world -- showcase flags & maps of the world which enable interaction & promote conversation & learning

#### Cultivate Calm & Joy

Cultivate calm, joyful and playful spaces for student learning and self-care



- Provide thoughtful incorporation of quiet learning spaces which promote a calm & quiet atmosphere

- Accommodate a variety of sensory needs to meet each student's individual support needs

- Blend daily learning with continued support for all developmental stages of the student -- infuse the surrounding learning environment with support for physical playfulness through the incorporation of games & exercise



- Cultivate an environment with a sense of belonging throughout, where each student feels welcomed, supported & safe

- Create spaces which inspire students to learn & create

# Goals

## EXCELLENCE

### *Developmentally-Focused*

#### Create & Re-Crete Environments

Provide fluidity in the creation and re-creation of learning environments through flexible ways to meet student needs



- Create flexible learning spaces that can shift easily to meet student & school needs

- Incorporate a variety of learning spaces which allow for the ability to meet students at their individualized learning pace



- Plan spaces for a growing & fluid environment to support learners of the future with needs we cannot yet anticipate

- Strengthen access to spaces that work for science exploration



- Foster impromptu & versatile learning spaces that flex to meet students' needs, i.e. floor & table work spaces

- Support flexibility throughout all learning spaces to encourage cross collaboration between all teachers & students

#### Support All Ways of Learning

Support multiple types and ways of learning, including student choice and self-directed learning, local and global opportunities for collaboration



- Include impromptu collaboration spaces for both individual & collectivist learning experiences

- Incorporate spaces which support the development of the whole child; provide learning environments for active & creative play to support gross motor skills & social interactions



- Create learning environments which foster inclusion, where every student feels a sense of belonging & all can thrive as collective learners

- Shape an equitable learning environment to meet each learner right where they are



- Support students in self-directed learning by providing space for them to feel encouraged to follow their passions & interests

- Give students the choice of stimulating & thought-provoking learning spaces as well as calming & relaxing spaces to think & create in

# Goals

## ENGAGEMENT

### *Community-Based*

#### Promote Connection

Promote connection between students, their class community, the school community, with families and the neighborhoods we support



- Cultivate meaningful allyship & continued advocacy for every student

- Further strengthen the connection between students & their surrounding community by supporting the school as a central learning hub & space for all learners to feel included in the bigger picture



- Support all student families by creating welcoming spaces that provide a space for families to feel included & considered within their school community

- Maintain a sense of space for all learners to feel included & to embrace being a part of a larger community

- Create welcoming communal spaces which foster & grow the foundational connection between the school & broader community

- Develop a learning atmosphere of collaboration & empathy to promote continued connections between each student & the world around them



#### Nurture with Nature

Nature is Nurturing – Engage students with indoor and outdoor connections to nature and the world



- Invigorate indoor spaces with natural light & fresh air with views to the outside to promote a calm & supportive learning environment

- Lead by example -- create sustainable buildings to immerse students in the continued efforts of sustainability

- Encourage classroom connections to the outdoors as a space to learn in & a place to learn about

- Prompt global perspective & world learning through connections to the community outside of the immediate school environment

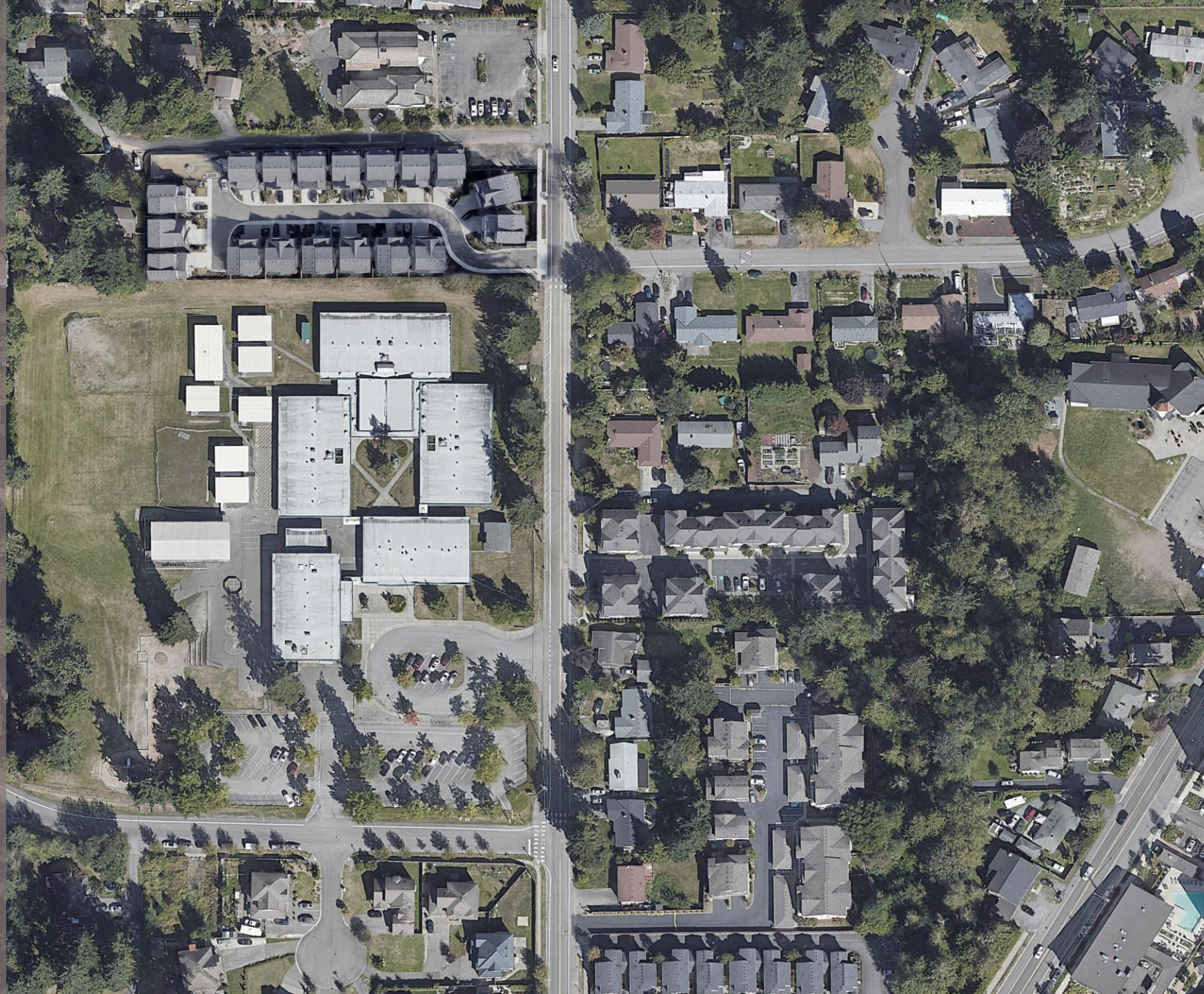


- Strengthen daily connection to the outdoors by creating outdoor learning spaces which support the benefits of biophilic design

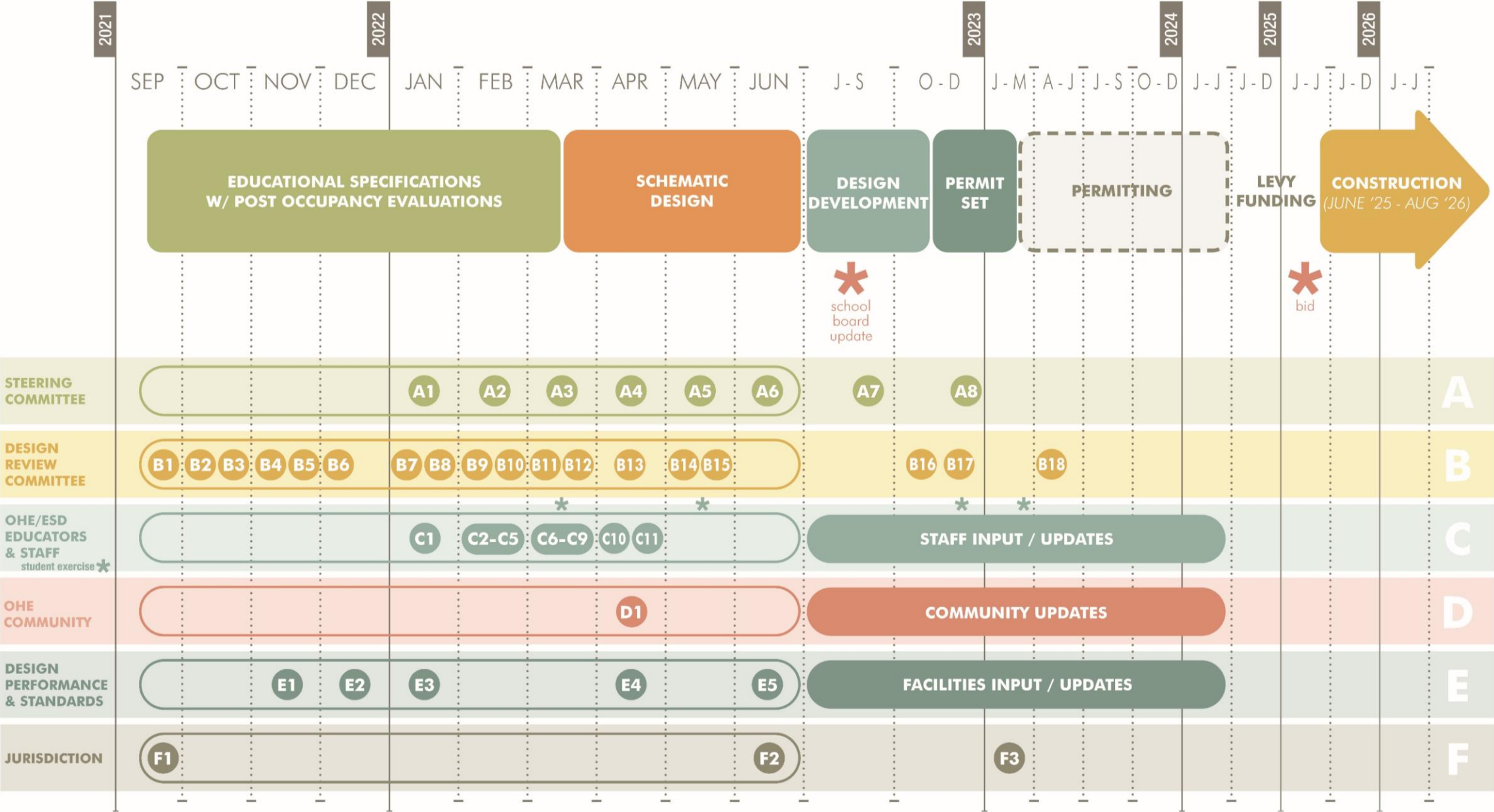
- Foster environmental stewardship through incorporation of the relationship of the surrounding site & natural areas

# Agenda

- » Introductions
- » Goals
- » Site & Building Design
- » Questions



# Project Schedule



Existing Site



# Proposed Design

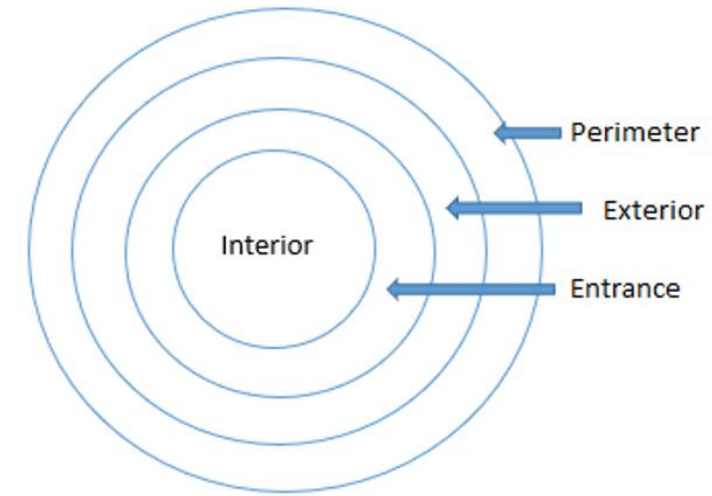
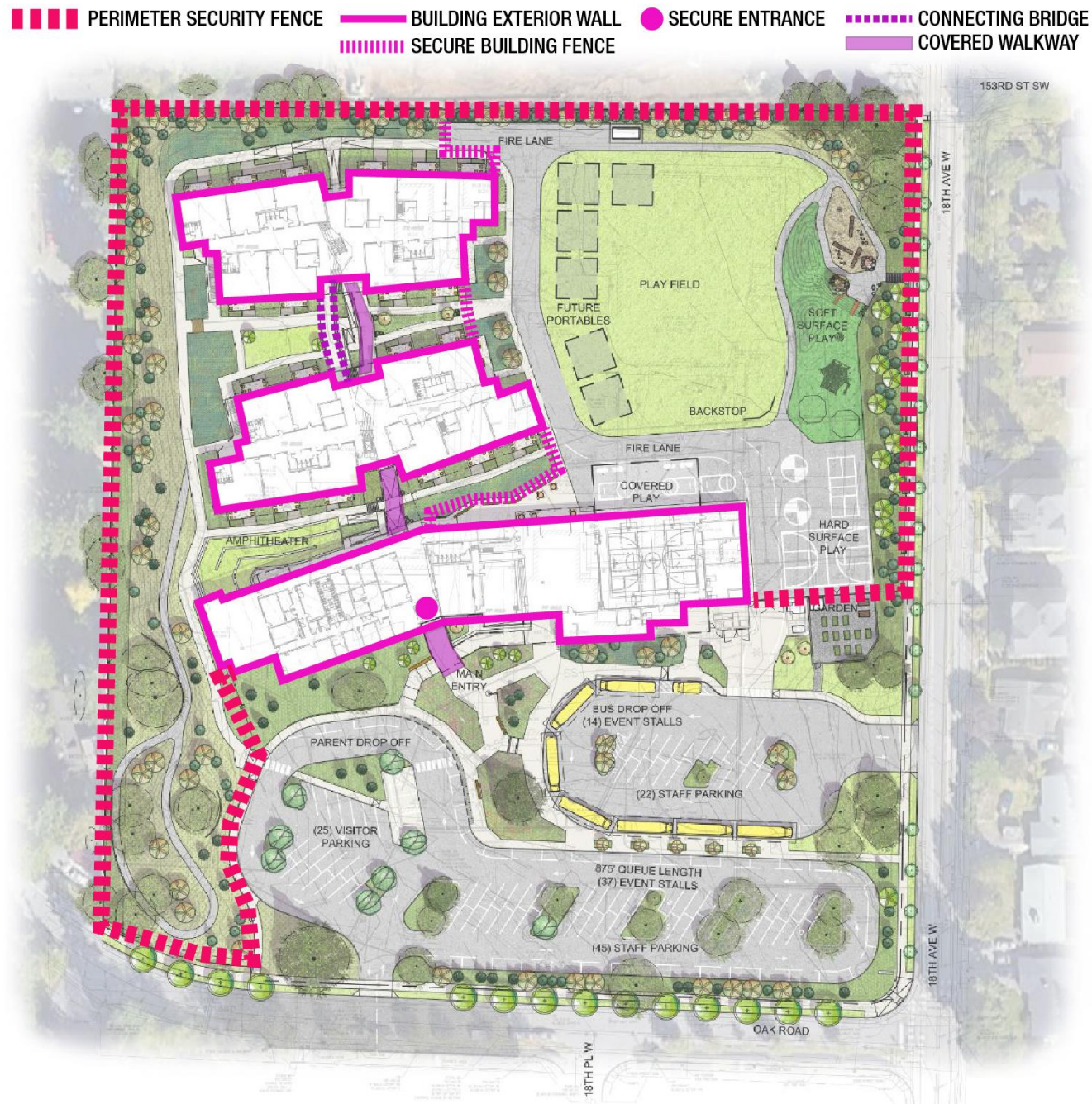


# Site Plan



# Site Plan

- » Fencing
- » Cameras
- » Access Control (doors can be locked down and scheduled)
- » Doors alarms & sensors
- » Intercom
- » Training and safety procedures for staff and students
- » Building procedures, such as single entry & signing in at front office
- » Good sightlines to school's interior and exterior spaces
- » Safety glazing
- » Blinds
- » Signage
- » Exterior lighting
- » Building alarm
- » Improved communication systems  
Ex: digital IP speakers
- » Exterior lock down light to inform visitors



## Concentric Rings of Control

- » Deter
- » Detect
- » Delay

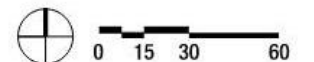
# Main Floor



## FLOOR PLAN LEVEL 1

### LEGEND

- 1 ADMINISTRATION
- 2 LIBRARY
- 3 MUSIC/PLATFORM
- 4 COMMONS
- 5 PHYSICAL EDUCATION
- 6 GENERAL CLASSROOM
- 7 CLASSROOM SUPPORT
- 8 KITCHEN/ SUPPORT



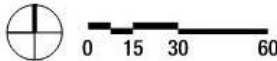
# Upper Floor



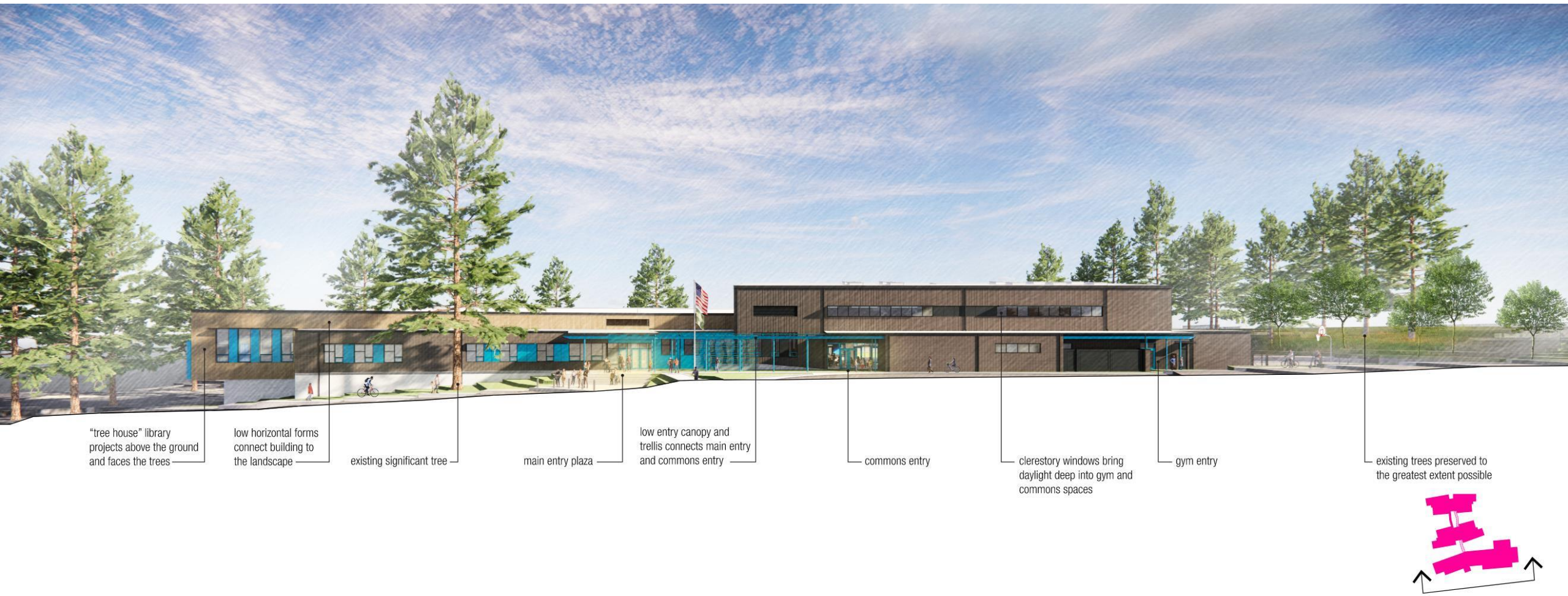
## FLOOR PLAN LEVEL 2

### LEGEND

- 1 ADMINISTRATION
- 2 LIBRARY
- 3 MUSIC/PLATFORM
- 4 COMMONS
- 5 PHYSICAL EDUCATION
- 6 GENERAL CLASSROOM
- 7 CLASSROOM SUPPORT
- 8 KITCHEN/ SUPPORT



# Public Building South Facade



"tree house" library projects above the ground and faces the trees

low horizontal forms connect building to the landscape

existing significant tree

main entry plaza

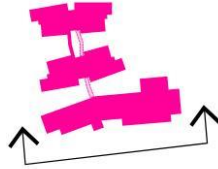
low entry canopy and trellis connects main entry and commons entry

commons entry

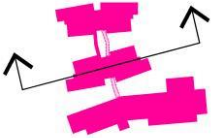
clerestory windows bring daylight deep into gym and commons spaces

gym entry

existing trees preserved to the greatest extent possible



# Classroom Building Flex Learning Section



# Classroom Building Courtyard Section



central courtyard connects students to the outdoors

vibrant accent panels and canopy structure creates a playful and inviting exterior expression

skybridge connecting two classroom bars

exterior ramp and stairs connects split-levels

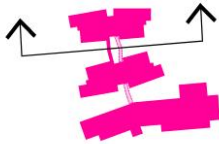
exposed glulam timber roof framing reinforces biophilic associations

covered walkway connects the two classroom bars across the academic courtyard

covered outdoor learning patios at each ground level classroom

custom bargrate shading devices between roofs unifies the canopy expression

classroom buildings connect to playground through an ornamental security fence





OAK HEIGHTS ELEMENTARY

Main Entry



Entry Lobby



Dining Commons & Gym



Central Flex Learning & Stair



Flex Learning Area



Lower Flex Learning Area



General Classroom



General Classroom



# Agenda

- » Introductions
- » Goals
- » Site & Building Design
- » Questions



# Thank You!



# Oak Heights Elementary School Replacement PTA Meeting

Edmonds School District

2.13.2023