

How to use the **FM transmitter** and **auxillary cable** *instead of headphones* for Deaf/hard of Hearing Students

Unplug the headphone/speaker
sometimes this is at the back of the computer



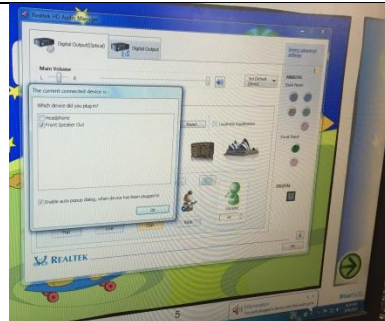
Plug the auxiliary cord (in this picture it is a red cord) into the FM transmitter into the headphone jack



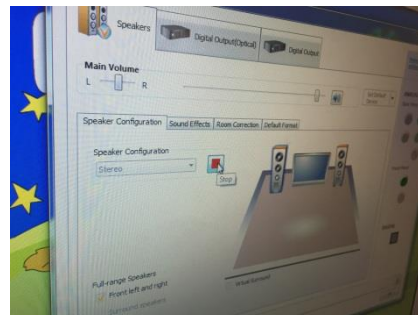
Plug the auxiliary cord (in this picture the red cord) into the sound source (the computer's HEADPHONE jack).



If prompted adjust the computer's volume settings.



The student may also desire to adjust the main volume for the sounds coming from the computer.



Happy Listening through you Hearing Aids or Cochlear Implant using your FM transmitter and the auxiliary cable!