

# Roger Touchscreen Mic Cheat Sheet

This Roger Touchscreen microphone system connects to a student's hearing aids or cochlear implants, allowing the student to hear the teacher's voice clearly, no matter how much background noise there is in the room or how far away he or she is from the teacher. For more information on why a microphone system is used and what it sounds like, scan the QR code.

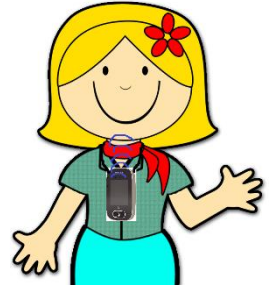


This is the Roger Touchscreen Microphone:



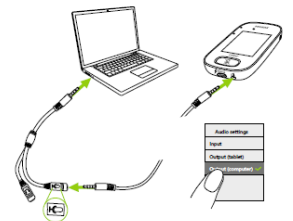
## FOUR ways to use!


- Lecture Mode:**  
For Direct Instruction  
Teacher wears it on a lanyard, 6-8 inches below mouth.
- Small-Group Mode:**  
For Small Group Work. Place flat on table to pick up the voices of the group.
- Pointing Mode:** For class skits/presentations/assemblies.  
Teacher or student can point at the person speaking, within 20 feet away; good for class skits or presentations when multiple people are speaking.
- Computer/Media Listening:** Plug the auxiliary cable into the touchscreen mic and into the laptop/chromebook to replace headphones.



### Indicator Light:

	Indicator light	Meaning
		On/Off
		Charging
		Fully charged
		Switched on
		Recharge device
		On/Off
		Charging
		Fully charged
		Muted
		Primary microphone not available



Tap the Connect button  2-3 inches away from your student's receiver to ensure the microphone is transmitting sound to the student.



**Charge EVERY DAY after school!**