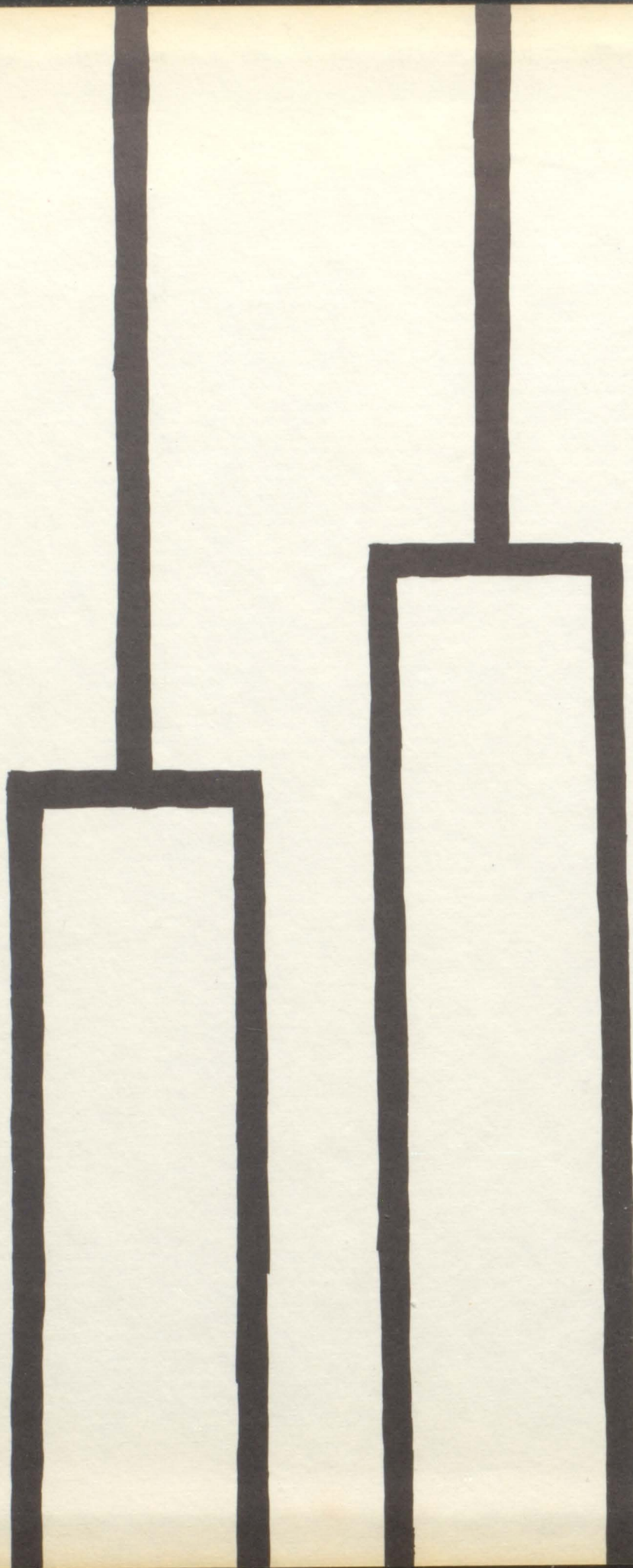


**F o r e s t e r ' 6 2**

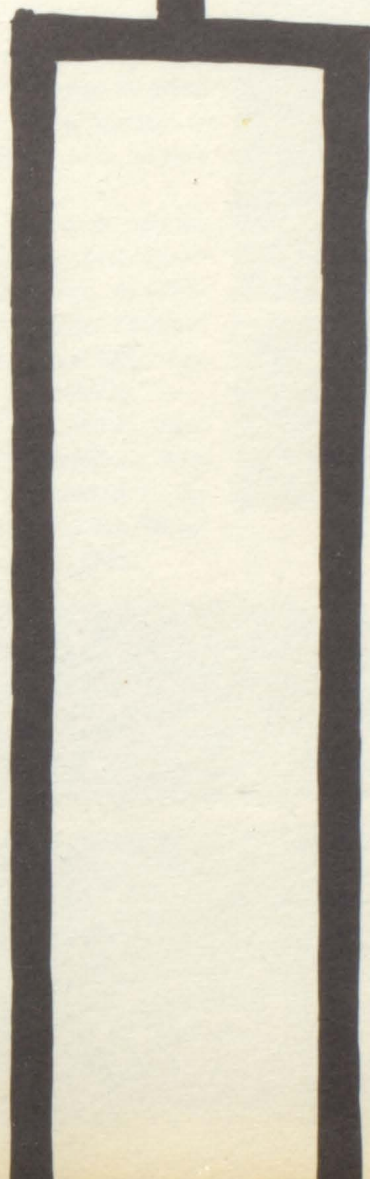
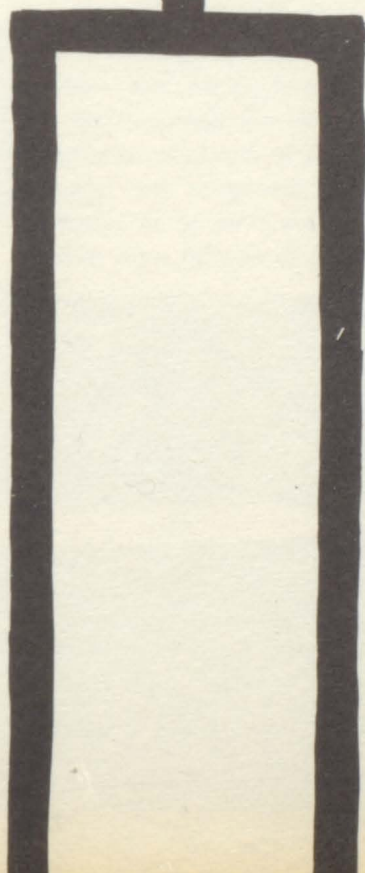




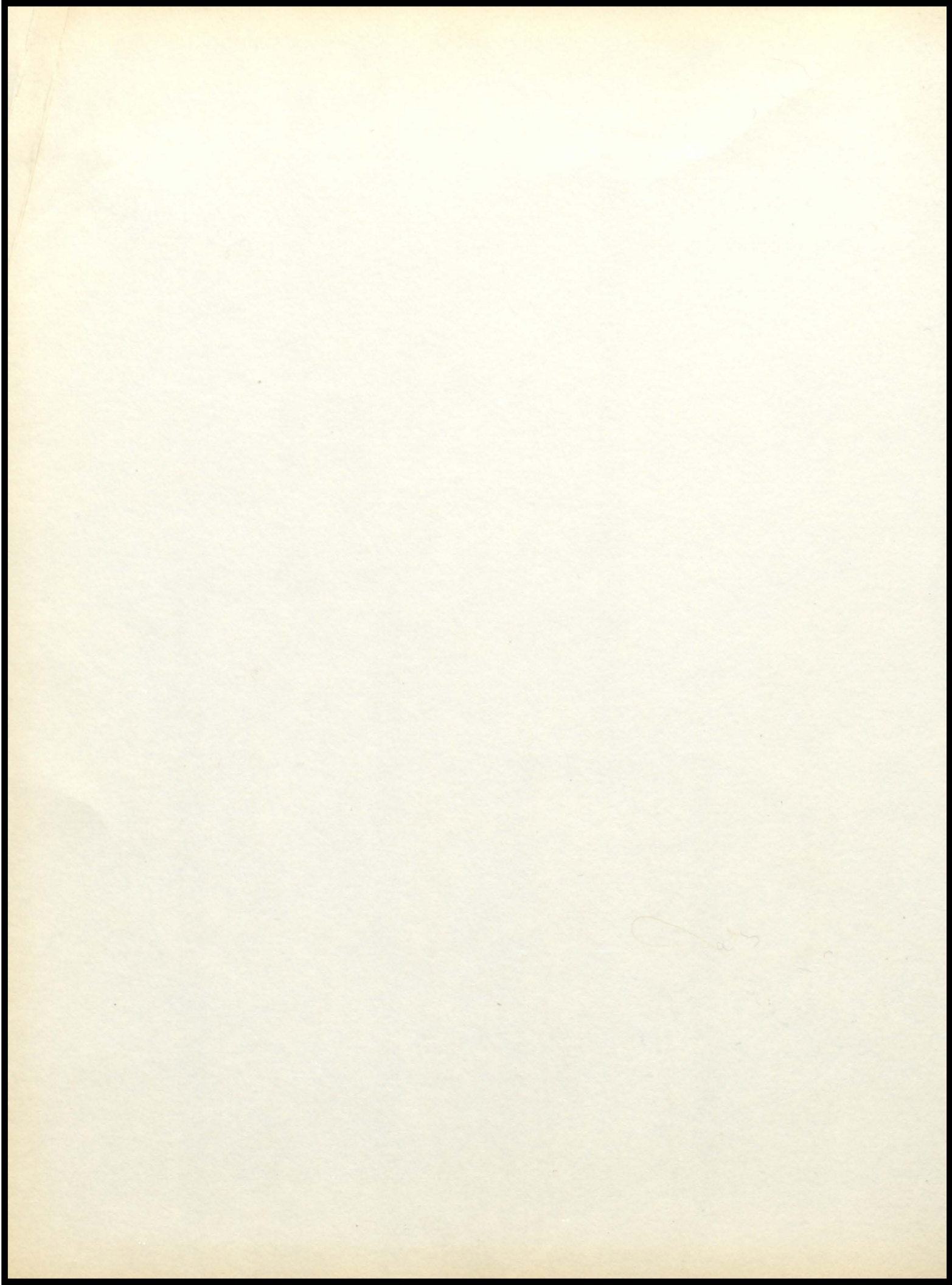


Ex Libris

---









# FOREWORD

**T**HE year 1961 will undoubtedly be assured vast coverage in the recording of world events. With the Buck Rogers-like exploits of Gagarin, Shepard, and Grisom, the world was no longer a planet unto itself. Epic achievement tumbled upon epic achievement. Awe-inspiring as these events of a few months were, the peoples of the earth were at a loss as to whether they were to be aptly described as fearful or wonderful.

With these events, and in the wake of them, were to come problems not only of a scientific nature. Overnight the accumulated knowledge of the world became dwarfed next to the vast areas of the unknown being opened to man. Overnight the comfortable security of wide oceans became a fond memory.

The greatest single mandate of this long-prepared-for Space Age is accelerated mass education, and Forest Lake, like thousands of other communities, has, in addition to the steady, natural growth of educational facilities and services, attempted to pump even more planning, effort, and money into its endeavor to keep pace.

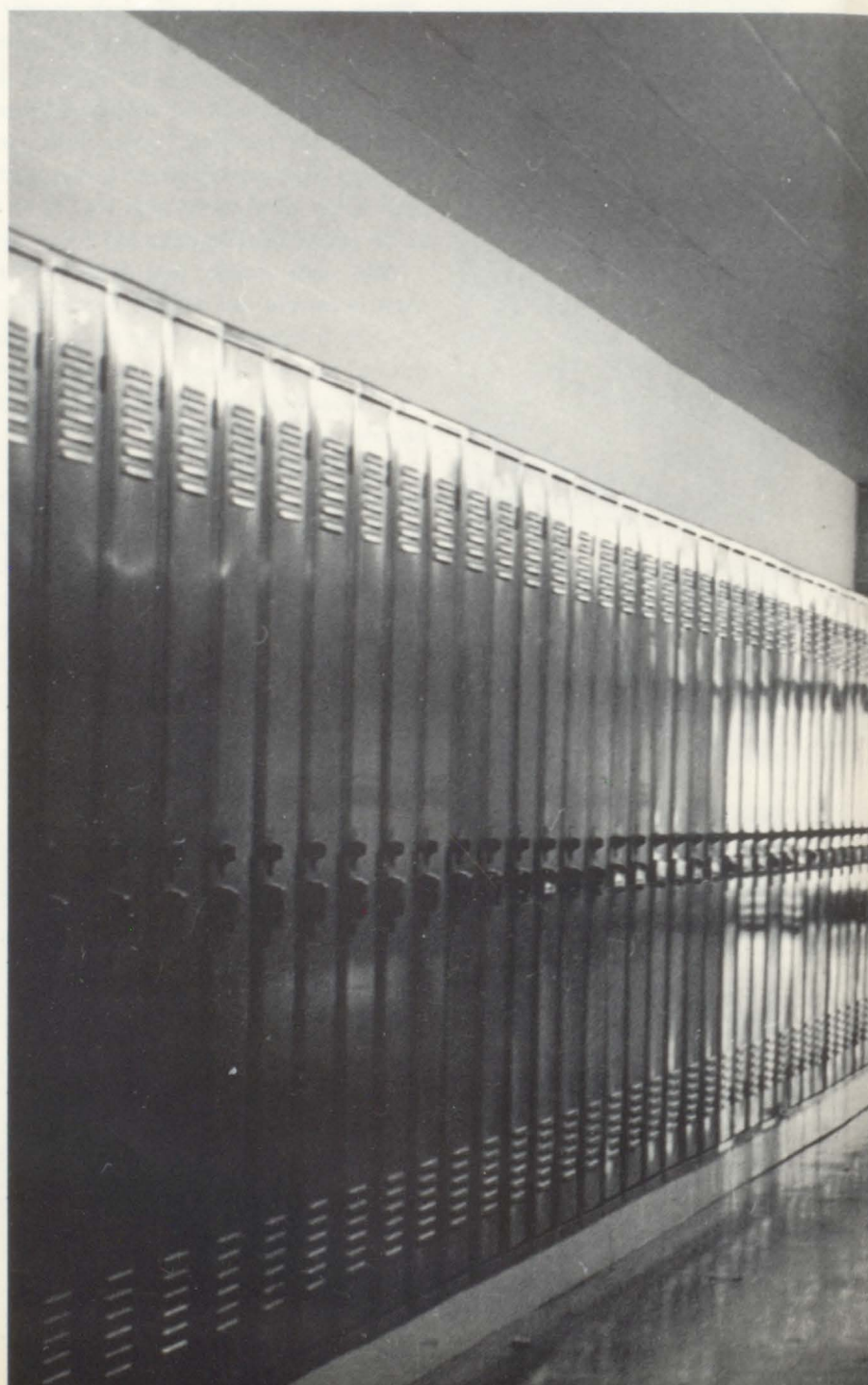
Documenting this effort with pictures and words, then, is the avowed task of your FORESTER. New facilities, new faces, new equipment, and new ideas will unfold to the reader as he turns the pages to see pictured the Forest Lake Area Schools as they are in epic year, 1961.



# *THE '62*

PUBLISHED  
BY  
THE STUDENTS  
OF  
FOREST LAKE  
HIGH SCHOOL

FOREST LAKE,  
MINNESOTA



# FORESTER

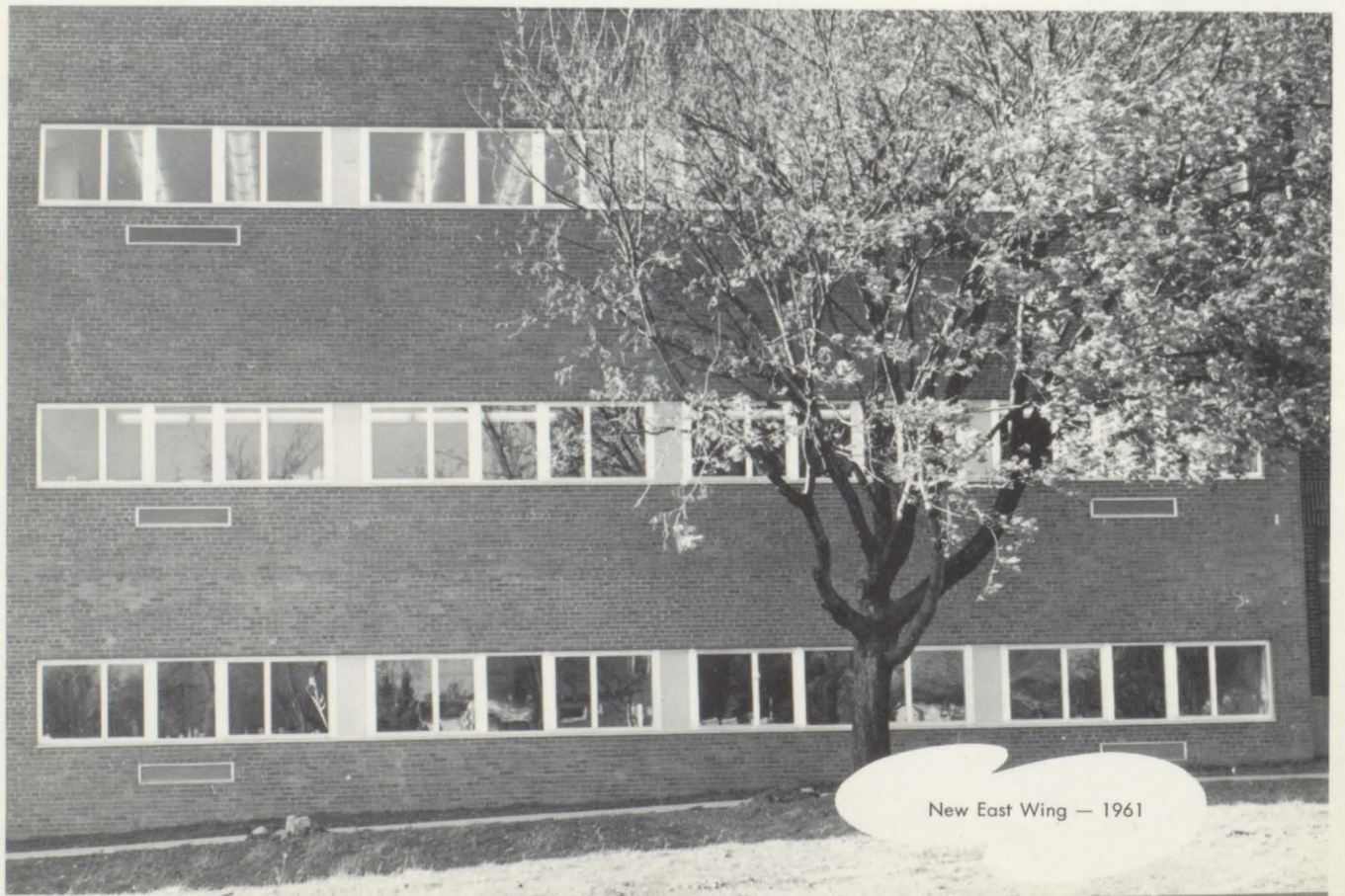
WEST SECTION OF THE 1961 NORTH WING







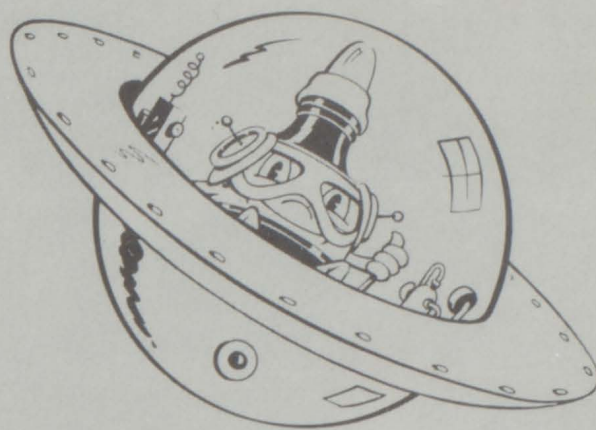
New North Wing — 1961



New East Wing — 1961



PAGE  
BY  
PAGE



FACULTY, ADMINISTRATION, AND ACADEMIC . . . . .	11
SENIORS . . . . .	35
ACTIVITIES AND ORGANIZATIONS . . . . .	49
ATHLETICS . . . . .	69
UNDERCLASSMEN . . . . .	82
ADVERTISEMENTS . . . . .	94



# SKILLED INSTRUCTION WITH FANTASTIC NEW FACILITIES . . .

THE SNAKE FAMILY IS ONE OF MANY STUDIED BY THESE BIOLOGY STUDENTS — Marsha Yost, Bob Berggren.

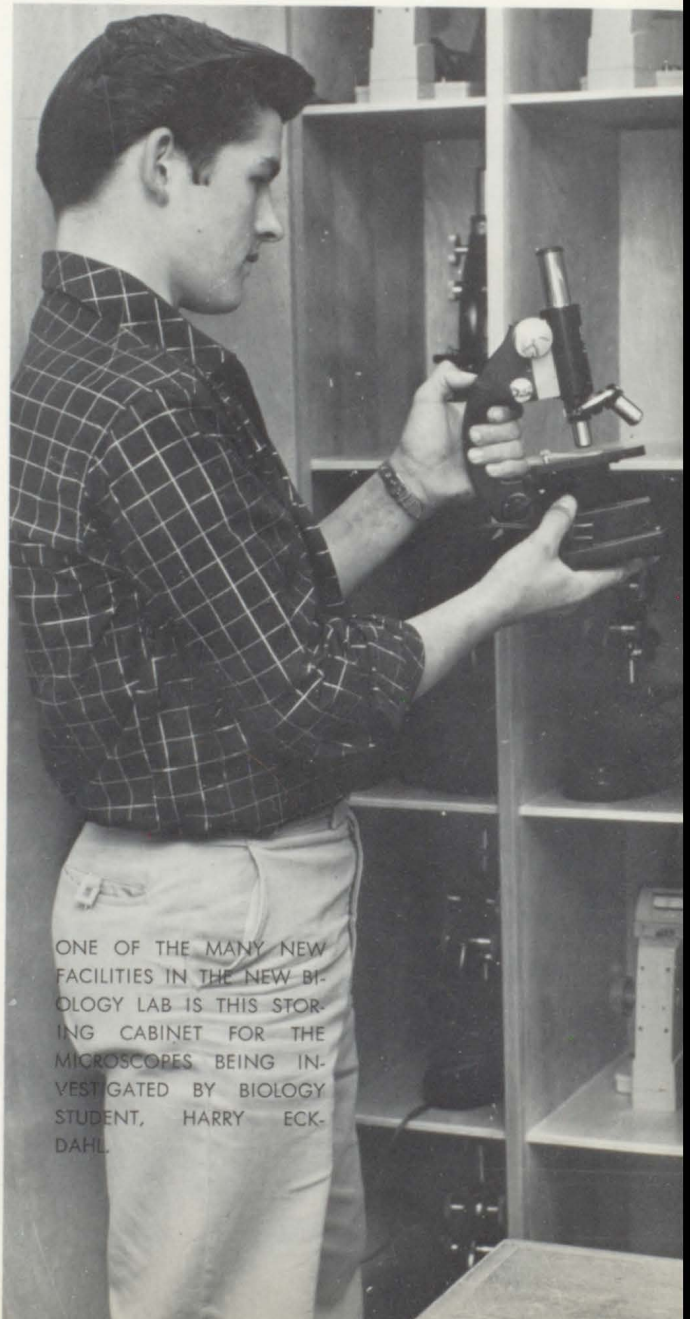


TWO BIOLOGY STUDENTS DISCOVER THE WORLD OF REPTILES BY EXAMINING THE SEVERAL SPECIMENS ON HAND IN THE NEW BIOLOGY LAB — Harry Eckdahl, David Bezek.



A part of the building program this year included fabulous new facilities for biology on the third floor of the new building. A new classroom with more and better laboratory facilities enables Mr. Harper to give students better instruction in laboratory procedures. Included in the new classroom are display cases, more countertop space, a smaller separate storage and a reference room containing file cabinets on human diseases and many other things, and another small constant-temperature room.

These new facilities give the students more materials to work with. More students may take advantage of this because of the great increase in size over the old lab. These rooms represent an important step forward for science instruction at FLHS.



ONE OF THE MANY NEW FACILITIES IN THE NEW BIOLOGY LAB IS THIS STORING CABINET FOR THE MICROSCOPES BEING INVESTIGATED BY BIOLOGY STUDENT, HARRY ECKDAHL.



# BIOLOGY



MR. HARPER POINTS OUT THE VITAL ORGANS OF A HORSESHOE CRAB TO THREE STUDENTS  
— Bonita Swanson, Beverly Kunshier, Naomi Moody, Mr. Harper.

"LET'S CHECK HIS REFLEXES!" — Viola Duchatel, Helen Kammerer, Jerry Patrin, Allen Stringer.





# MANY PEOPLE ARE REQUIRED

COOKS: Edith Kauls, Glouress Neske, Peg Peterson, Florence Collins, Cafeteria Manager; Helen Beeksma, Nettie Nedegaard, Grace Anderson, (Aggie Patrin, Head Cook, not pictured).



JANITORS — SITTING — Millard Olsen, Lucas Beeksma, Angelica Solem, Berger Olson, Reynold Erickson, Chief Custodian.

STANDING — Frank Collins, George Okeson, Bud Pepin, Helmer Swenson, Conrad Carlson, Peter Johnson.





# FOR OPERATION OF SCHOOLS

A monumental task — that of maintaining the physical plant that comprise the District 831 schools in Forest Lake confronts the custodial staff the year around. These needed people are called upon, to repair, replace, reseal, to connect, correct, collect and to sweep, service or sort the myriad things which may need attention in a school.

The noon meals of the students are prepared under the capable hands of eight cooks. The cooks work all morning to prepare a nourishing lunch for the hundreds of students who eat hot lunch in the cafeteria. The annual chicken dinner was served to approximately twenty-two hundred students in Forest Lake.

The proficient help of the secretaries is appreciated by all. May Damsgaard and Muriel Alcock are the qualified secretaries who work in the superintendent's office. Melba Sahlin and Bev Randall labor in the principal's office as secretaries, while Elsie Houfer divides her time between the counseling office and the library.

Senior high girls assist the secretaries throughout the day. Two or three girls work in the office at different hours of the day. They collect absent slips, distribute the bulletins to the various rooms, file cards and excuses for tardy students, and run many errands for the secretaries.



Elsie Houfer, who assists the counselors with the myriad details attendant upon their functions of guidance and testing, "doubles in brass" in the afternoon hours by acting as a secretarial assistant to the high school librarian.



OFFICE HELP — Peggy Lehmann, Carole Christiansen, Bev Randall, Diane Daninger, Barb Bolzart, Dele Fuglie, Marianne Haselbauer, Judy Campbell, Sue Taylor, Carol Halley, Judy Granholm, Melba

Sahlin, Helen Kammerer, Joann Birr, Janet Palmer, Faith Radtke, Virginia Steltzner, Linda Voss, Cheryl Jonason.





IMPORTANT TO THE SMOOTH FUNCTIONING OF THE SCHOOL ARE MR. COHOES' SECRETARIES MELBA SAHLIN AND BEV RANDALL.

AIDING MR. HUGHES IN HIS ADMINISTRATIVE DUTIES ARE MAY DAMSGAARD AND MURIEL ALCOCK.





# FACULTY, ADMINISTRATION AND ACADEMIC

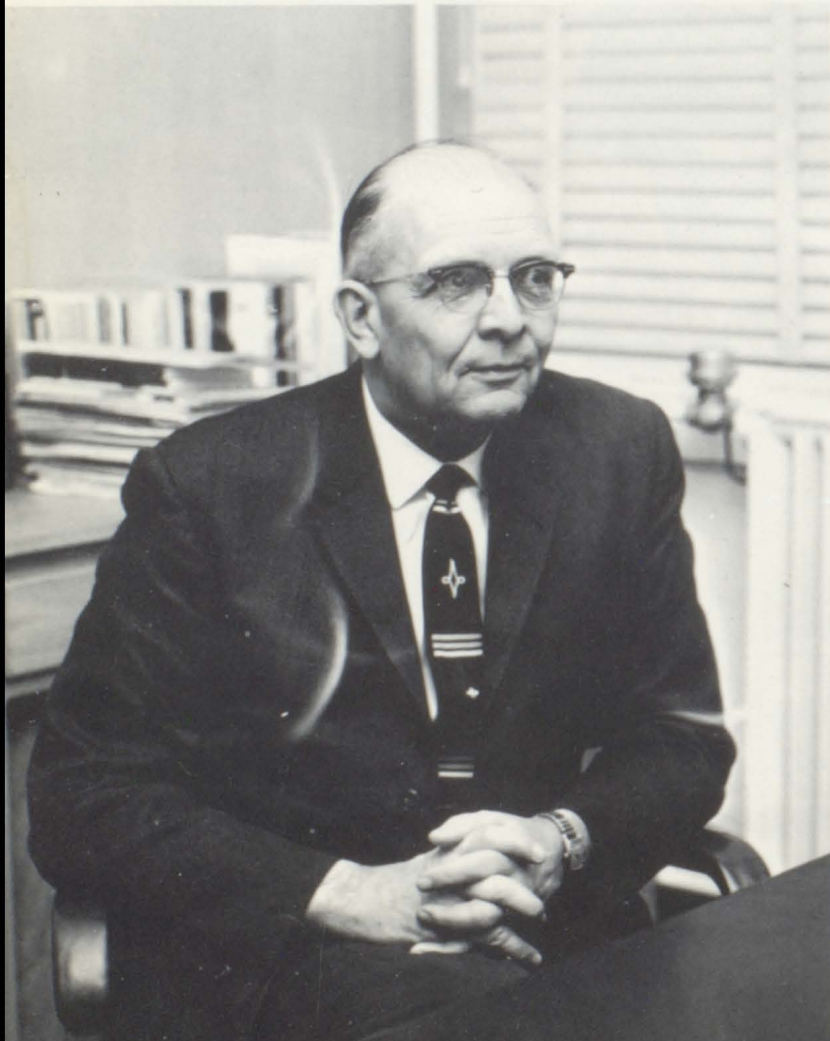


THREE PROFESSIONAL STAFFERS CONFER — Mr. Wittig, Mr. Dahl (on leave of absence to the Army), and Mr. Ratzlaff.





BOARD OF EDUCATION MEMBERS — LEFT TO RIGHT — Doris Lellman, James L. Purdie, Harvey Westberg, Norton Y. Taylor, Herbert W. Engquist, Henning W. Engstrom, J. A. Hughes, Superintendent of Schools.



J. A. HUGHES  
Superintendent of Schools

# BOARD, ADMINISTRATION SEEK IMPROVEMENTS

Elected by the people of District 831, the board members represent many years of experience in guiding our school. Dedicated to improving standards and curriculum, these people undertake many chores including hiring new teachers, accepting bids, and meeting any crises that may arise. Acting as representatives of the people, the board sets school policy and works long hours to insure a fair hearing to all.

For the first time in the history of FLHS the voters have elected a woman to the Board of Education. Mrs. Doris Lellman was elected to sit with the other members on the board. Together they help make any final decisions concerning FLHS. The responsibility of efficient management of the FLHS area schools rests with these people and without whom the schools would be unable to function.

While board members are policy-makers, the administrators are the executives of the school system who carry out plans for routine school operation as well as for special policies of the board.



HAROLD C. MANLEY  
Junior High School Principal



FLOYD W. COHOES  
High School Principal



# NATIONAL, WORLD AFFAIRS ARE SOCIAL STUDIES FARE



ROLLIN NELSON  
Instrumental Music  
Social Studies



EDMUND GRUND  
Social Studies



FRANK TERRY  
Social Studies  
Athletics

Preparing students for the problems of future participation in world affairs is the task of the social studies teachers at FLHS. Students are given an understanding of the past, present, and future problems of world affairs.

Several different types of social studies as American history, geography, world affairs, and social science, which is the study of governmental and social problems, are undertaken by the students. These classes are offered to all students except freshmen, and social science is required of all students in the senior year.

Seventh graders concern themselves mainly with American history and government. World geography is undertaken by eighth graders. In the freshman year a practical business course is substituted for a history class, but again in tenth grade American history is pursued. A social studies course is not required in the junior year but an elective history course is offered.

The loss of Mr. Dahl, who is now on leave to the army, brought a new addition to the faculty, Mr. Benson, who has taken over Mr. Dahl's social studies classes and part-time counseling duties.

ALTHOUGH ANOTHER PRESIDENTIAL ELECTION YEAR HAS PASSED, MR. GRUND'S SOCIAL STUDIES CLASS FINDS IT AN IMPORTANT PHASE IN THE STUDY OF POLITICAL PARTIES. — Dan Lundquist, Jean LeRoux, Mr. Grund.





GEOGRAPHY OF THE WORLD TODAY IS THE MAIN CONCERN OF MR. TERRY'S EIGHTH GRADE SOCIAL STUDIES CLASS. — Mr. Terry, Jenine Morstad, Jack Duncan, Tom Gaetz, Walter Stoltzman.

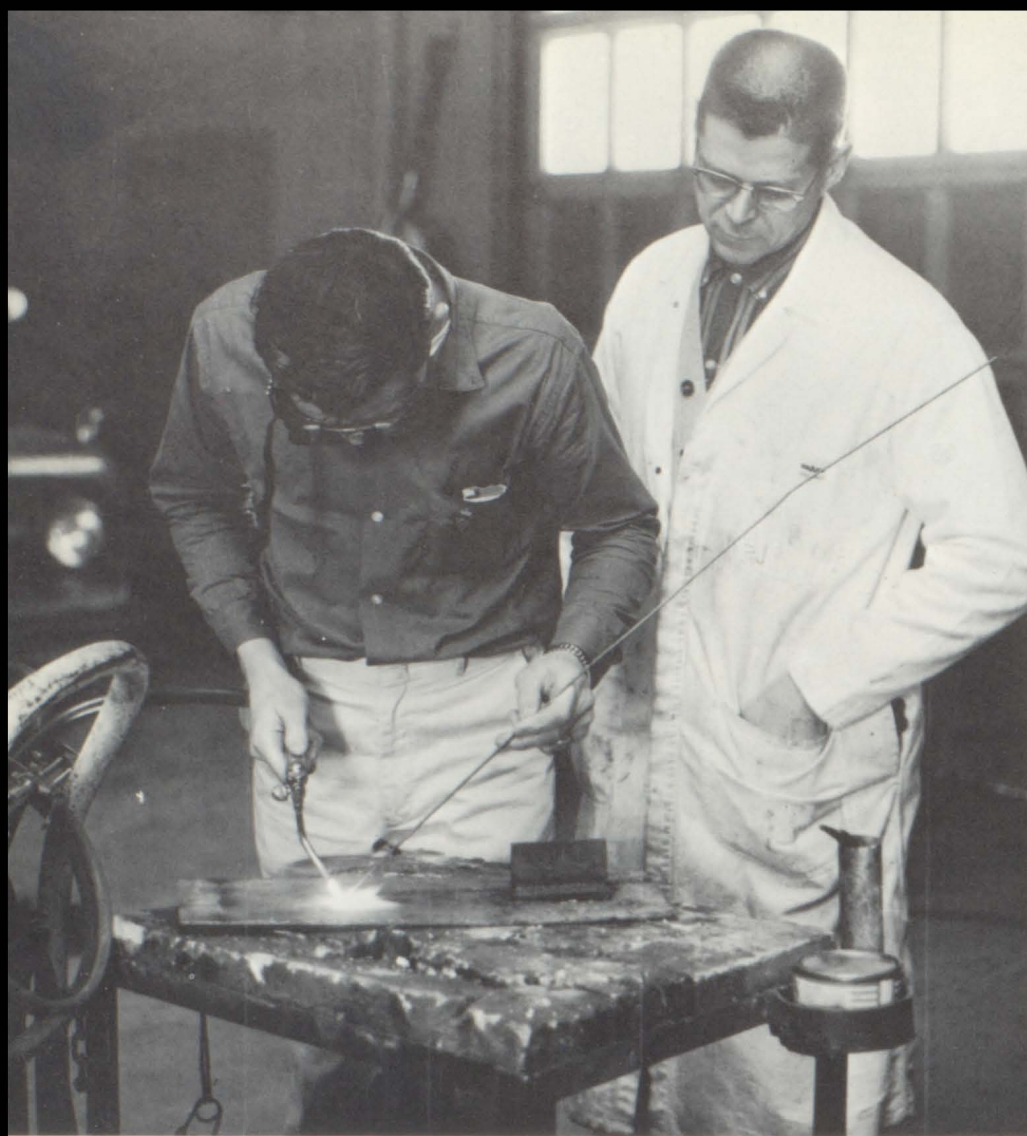


CLARENCE FRAMSTAD  
Social Studies

THOMAS MATTESON  
Social Studies  
Athletics







GEORGE MIRON WELDS A PIECE OF FARM EQUIPMENT AS MR. KULBECK LOOKS ON.



## AG DEPARTMENT SERVES AREA

Again serving the entire area with educational programs for adults and students alike, the Ag Department has provided instruction in farm management for area farmers.

Through required projects, students put to practical use the various areas of studies included in their curriculum for the year. Projects range from crop rotation to raising dairy cattle. Skills learned during the four years of Ag education include many, such as planning farm programs, studying animal nutrition, and farm management.

Most of the agricultural students are active members of the local FFA chapter, which participates in many farm activities.

RAYMOND KULBECK  
Agriculture



LEE SANDAGER  
Agriculture



HOME EC STUDENTS EAGERLY WATCH A DEMONSTRATION OF BASIC COOKING SKILLS BY MISS ARFSTROM — Madeleine Duchatel, Linda Swanson, Tamora Stromquist, Miss Arfstrom, Maria Haas.



## HOME EC ENJOYS NEW LAB

In addition to the basic areas of a comprehensive home economics program, sewing and cooking, a multitude of related topics is taught. Among them are child care, budgets, food preservation, and wise shopping.

Christmas projects were undertaken by the seventh and eighth graders this year. The eighth graders made placemats with textile paints while the seventh graders had a choice of many different decorations, such as plastic wreaths, centerpieces, or string baskets. The senior high classes made wool clothing such as dresses, suits, and coats.

This year an extra room was added to the home ec facilities. This room is used as a regular class room when the students do not use the laboratory. This room used to be a science room, and has been completely refurbished. Other new features added this year included new stainless steel sinks, new dishes, glassware, a new food mixer, a new sewing machine and new pressing equipment.

Two part-time teachers, Mrs. Sandager and Mrs. Klinkerfues, were also employed this year to handle the load of eager home ec students.

KATHRYN ANDERSON  
Home Economics



DOROTHY ARFSTROM  
Home Economics



BETTY SANDAGER  
Home Economics



FLORENCE KLINKERFUES  
Home Economics







GOING OVER CHRISTMAS MUSIC ARE THE NEWLY ELECTED BAND COUNCIL MEMBERS — STANDING — Dele Fuglie, Mr. Nelson.

SITTING — Bob Engquist, Craig Moen, Larry Waldoch, President Ray Halverson, Kay Bjornstad, Dan Lundquist, Bob Hillsdale.

REHEARSAL EVERY HOME ROOM UNDER THE DIRECTION OF MR. PARTINGTON HELPS THESE 'B' BAND MEMBERS BECOME BETTER PLAYERS IN PREPARATION FOR THE 'A' BAND.





# MUSIC DEPT. EXPANDED

The Music Department of FLHS has expanded this year with the addition of a junior high music instructor, Mr. Partington. With this addition, Mr. Rose, choir director, and Mr. Nelson, the FLHS band director, are able to devote more of their time to the choir and band respectively. This makes it possible for a four-day week for choir rehearsal compared to the previous twice weekly rehearsal. Choir members also are enrolled in a weekly sectional rehearsal. Mr. Nelson is able to have weekly reed and brass sectionals together with three complete band rehearsals during the week.

Other than the reed and brass sectionals during fourth hour, there are also individual sectionals that meet during home room. Under the direction of Mr. Partington, the junior high music students are learning the theory of music, singing, and a combination of music appreciation, and history of music. He also directs a ninth-grade glee club and the junior high band.

Juniors and seniors are offered a music course called Rudiments of Music. This course, under the instruction of Mr. Rose, gives students music theory, arrangement, and composition study.

ROLLIN NELSON  
Instrumental Music  
Social Studies



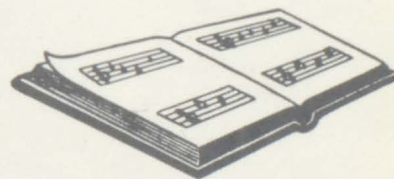
RUSSELL ROSE  
Vocal Music



JOSEPH PARTINGTON  
Junior High Music



AT PRIVATE LESSONS 'B' BAND STUDENTS CAN RECEIVE SPECIAL ATTENTION — Mr. Partington, Mary Taylor.







LEROY STANG  
Commercial  
Athletics



JACK BUYS  
Commercial



JANET WILEY  
Business Relations  
Bookkeeping

## BUSINESS COURSES PROVIDE GOALS FOR MANY

Though in recent years the trend has been toward the sciences, there are still many students interested in the commercial courses at FLHS.

With the addition of a half-year's business relations course, a student has the opportunity for a year and a half of typewriting. The half of the year is used to learn the basic skills, and the second year primarily to increase speed and accuracy.

In office practices a student has the opportunity to get first-hand training similar to that used in an actual business office. They learn to operate several office machines

such as a dictaphone, mimeograph, calculator, and the adding machine.

Shorthand I and II are offered for those business-minded students who want to become stenographers and secretaries.

Bookkeeping is another course on the commercial curriculum at FLHS for students aspiring to be accountants study the problems of keeping journals for a large business. Students must complete a certain number of projects using the bookkeeping skills.

"MISTAKES WILL HAPPEN, BUT MUST YOU GIVE THEM SO MUCH HELP?" — Pat Casey, Mrs. Wiley, Ken Ebel.

MR. STANG REVIEWS WITH HIS NINTH GRADE GENERAL BUSINESS CLASS FOR A NINE WEEKS TEST.





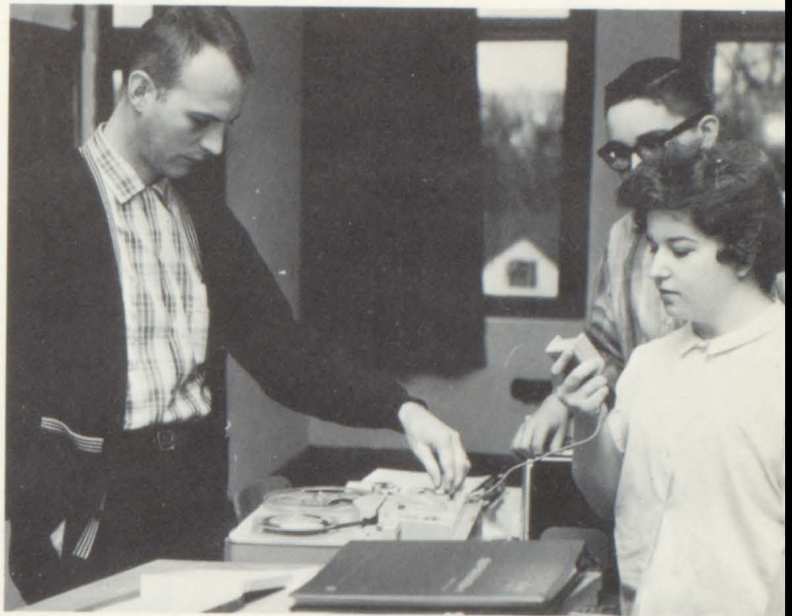
# FOREIGN LANGUAGES HAVE "BIGGEST" YEAR

Language instruction at FLHS has again expanded to accommodate the increasing number of students interested in foreign languages.

This year a change was made in the enrollment of Latin I and Latin II students. In previous years, Latin I was offered every even-numbered year. This year students in grade 9-12 may take Latin I and students in grades 10-12 may take Latin II. Another Latin teacher has been added to the FLHS language staff. He is Mr. John Welshons who is teaching Latin I in addition to his English classes. This job was originally filled by Mr. Paul Rafferty, this year's Latin II teacher and FORESTER advisor.

Spanish III is a new addition to the Spanish curriculum. Six senior high school students are taking this new advanced course. The lone Spanish teacher, Mr. Donald Arneson, has what might be called a triple job this year as he teaches all three years of Spanish.

The way of teaching Latin and Spanish varies slightly. Spanish consists of carrying on conversation between the students and the teacher, recording Spanish spoken by the students to correct Spanish dialect, and memorizing Spanish songs to give students an appreciation of language. Latin, generally considered a rarely spoken language, relies upon greater emphasis on traditional methods and materials. A Translation of Caesar's Commentaries on the Gallic Wars is the featured material of Latin II.



WITH THE HELP OF A TAPE RECORDER, MR. ARNESON TRIES TO IMPROVE HIS SPANISH STUDENTS' PRONUNCIATION. — Mr. Arneson, Diane DuFresne, Bruce Ramsden.



DONALD ARNESON  
Spanish  
Publications

JOHN WELSHONS  
English  
Latin  
Publications

PAUL RAFFERTY  
English  
Latin  
Journalism  
Publications







ARTHUR PALMER  
English  
Athletics



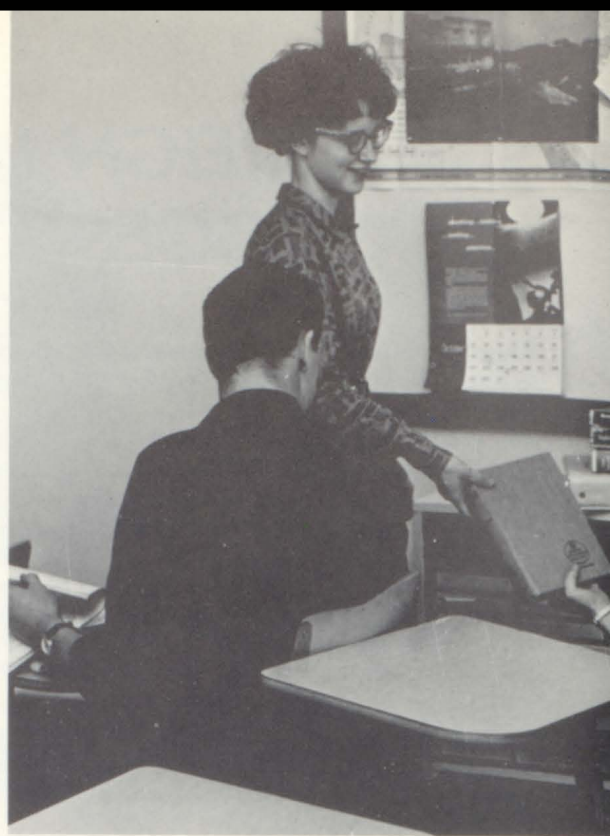
ALICE WEGLEITNER  
English



GENEVIEVE STANG  
English  
Girls' Health



RICHARD FOURNIER  
English  
Speech  
Drama



A GOOD, STANDARD DICTIONARY COMES IN HANDY FOR THESE ACCELERATED ENGLISH STUDENTS. — Martin Whitney, Kay Bjornstad, Wendee Forsberg, Gary Wahlberg.

## COMPOSITION, PAPER ENGLISH BY

Vast strides in updating curriculum and designing new materials have changed the offerings in English classes across the land. Here at FL, new emphasis has given the college-bound student more adequate writing and literary preparation, and has provided the non-college-bound with better basic skills and appreciations. Intensive composition work has replaced much of the old emphasis on formal grammar.

Among the new materials being used are handbooks on composition, collections of novels, more and better dictionaries and encyclopedias, and books of model composition works by recognized modern authors. The paperback, now become respectable, has found a new and valued place in virtually every classroom, and even in the library.

At FL, English, almost universally required through high school, has assumed additional importance to students since being offered in both regular and accelerated courses. College-bound students now may take special, accelerated courses in grades nine, eleven, and twelve. In addition to the normal offerings of composition and literature, these special courses challenge the student with near-college-level material and demands.

Among the five new teachers to join the English staff this year is Mrs. Genevieve Stang, formerly an FLHS physical education instructor. Other new members include Mr. Robert Turner, Mr. Richard Fournier, Miss Lois Schantz, and Mr. Karl Brungardt.





# BACKS WORDS AT FL



"FAIR IS FOUL, AND FOUL IS FAIR," QUOTES MR. WILSON FROM THE FIRST SCENE OF MACBETH TO HIS SENIOR ENGLISH CLASS.

LOIS SCHRANTZ  
English

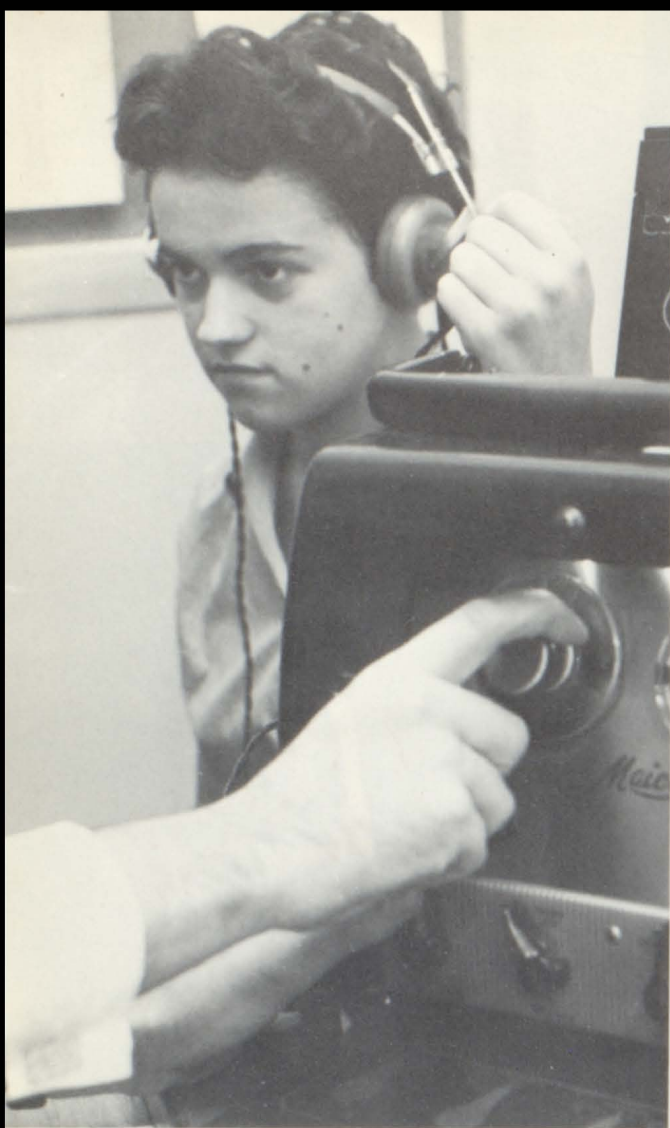
DAVID WILSON  
English

KARL BRUNGARDT  
English

ROBERT TURNER  
English







HEARING AND SCREENING TESTS ARE GIVEN TO ALL FOREST LAKE AREA STUDENTS. — Julie Jenuwine.

## EXPANDED SPECIAL SERVICES PROVIDED FOR STUDENTS

Augmenting the basic instructional program, the special services have come to play a major role in students' tenure at FLHS. At the inception of the special services program here, a school nurse office and a guidance-counseling service were provided. Each year added facilities and professional staffers were made available by the Board of Education.

Today the expanded program includes three guidance-counselors, a school nurse, a remedial math and reading teacher, a speech and hearing consultant, and a special class teacher.

Mr. Wittig, senior high counselor, Mr. Ratzlaff, junior high counselor, Mr. Benson, junior high counselor, conduct testing programs designed to help evaluate students' potential abilities, and achievements. Vocational, problems, and college counseling are provided to students from grades seven through twelve. (Currently on leave of absence to the armed forces is Mr. Vernon Dahl, junior high counselor.)

Remedial math and reading instruction, in its second year, under Mr. McGlinch, enrolls students with special problems in these areas. Exceptional children are in a special class conducted by Mrs. Volkmann.

Added this year is a new service to students in the entire district. A speech and hearing consultant, Mr. Gerald Anderson, conducts testing programs and aids students with particular difficulties in these areas.



IVAN RATZLAFF  
Counselor  
Social Studies



ARNOLD BENSON  
Counselor  
Social Studies

VERNON DAHL  
Counselor



"SAY AH-H-H-HI — Marlene Houfer, Miss Lily Stokes, School Nurse.



ALL STUDENTS IN MRS. VOLKMAN'S CLASS TAKE INTEREST IN THE VARIOUS PROJECTS UNDERTAKEN BY THE CLASS DURING THE YEAR.



WITH AN IMPORTANT DECISION BEFORE HIM, A SENIOR BOY GOES TO ONE OF THE COUNSELORS SEEKING TO FIND AID IN MAKING THE NECESSARY PLANS — Mike Rardon and Mr. Wittig.



RAMONA VOLKMANN  
Special Education

MICHAEL McGLINCH  
Remedial Reading  
Remedial Math

KENNETH WITTIG  
Counselor

GERALD ANDERSON  
Speech and Hearing







**GEORGE NYMAN**  
Chemistry  
Solid Geometry  
Trigonometry  
Physics



**HERBERT HARPER**  
Mathematics  
Biology



**MARVIN FUHRMAN**  
Science  
Audio-visual



**DONALD DENNISON**  
Science  
(Currently on  
leave with the  
Armed forces.)



**JIM SEVERSON** EXPLAINS THE FLOW OF ELECTRICITY IN VARIOUS TYPES OF SERIES AND PARALLEL ARRANGEMENTS TO HIS CLASSMATES.

## SCIENCE COURSES AT FLHS ENJOY FINE, NEW FACILITIES

Since the creation of Sputnik, science has become more important than ever before in Forest Lake's curriculum. Students in high school are now required by State Department regulation to have one advanced science course before graduating.

To help students fulfill their requirements, many science courses are offered at FLHS. First of all, there is general science which students have in the seventh through the ninth grades. Then as students enter tenth grade, higher courses such as biology and math are offered. In addition, a field biology course is also available. This year the field biology course has been substituted for conservation and is basically similar in nature.

Chemistry, the study of the composition of matter and the changes it undergoes, incorporates the study of the expanding periodic table, and the studies of various elements and their structures. It is offered to junior and senior students.

With the revisions made this year in the science curriculum, physics is offered only to seniors. The modern, well-equipped laboratory gives students the opportunity to experiment in many phases of science and to put their knowledge to a practical test.

Biology students have a fabulous new lab in which to work this year. The enlarged facility is located in the new east addition, and it contains capacious display and storage equipment.





ONE PHASE OF MR. PENNINGS' JUNIOR HIGH SCIENCE CLASSES IS STUDYING MICROSCOPIC ORGANISMS — Dave Nelson, Richard Haluptzak, John Morrison, Mr. Pennings.

LEARNING HOW TO OPERATE THE ANALYTICAL BALANCE IS AN IMPORTANT THING TO A FUTURE SCIENTIST — Mr. Nyman and Carol Makkyla.



HARVEY DJERF  
Science

HENRY DEMBICZAK  
Science

LEWIS SCHROEDER  
Science

DONALD PENNINGS  
Science





# MATH TOUGHER . . . BUT ENROLLMENTS STILL RISE

Like science, math has become an increasingly important subject in the lives of FLHS students. Students in high school are required to have completed one advanced math course before graduating. The seventh and eighth graders have a general math course in their curriculums. But as one emerges into the ninth grade, the student must choose between algebra and general mathematics.

General math consists of those processes used in ordinary daily life, such as the basic subtraction, addition, multiplication, and division. Ninth grade algebra is a preparation for higher algebra.

Plane geometry is an elective course for students in

the tenth, eleventh, and twelfth grades. It is the study of lines, theorems, postulates, angles, and circles together with other plane geometric forms.

Higher algebra can be taken by juniors and seniors. Advanced students find a combination of algebra and plane geometry in solid geometry (objects on all planes), and trigonometry. FLHS students are also offered a course called consumer mathematics, that will be useful in a student's later life. An advanced consumer math course is also provided.

Math classes at FLHS this year are enjoying many of the new classrooms provided through the recently completed building program.

IN ONE OF THE NEW MATHEMATICS CLASS ROOMS, MR. PELTO EXPLAINS THEOREMS TO HIS PLANE GEOMETRY STUDENTS — Donald Stanek Randy Frazier, Mr. Pelto.



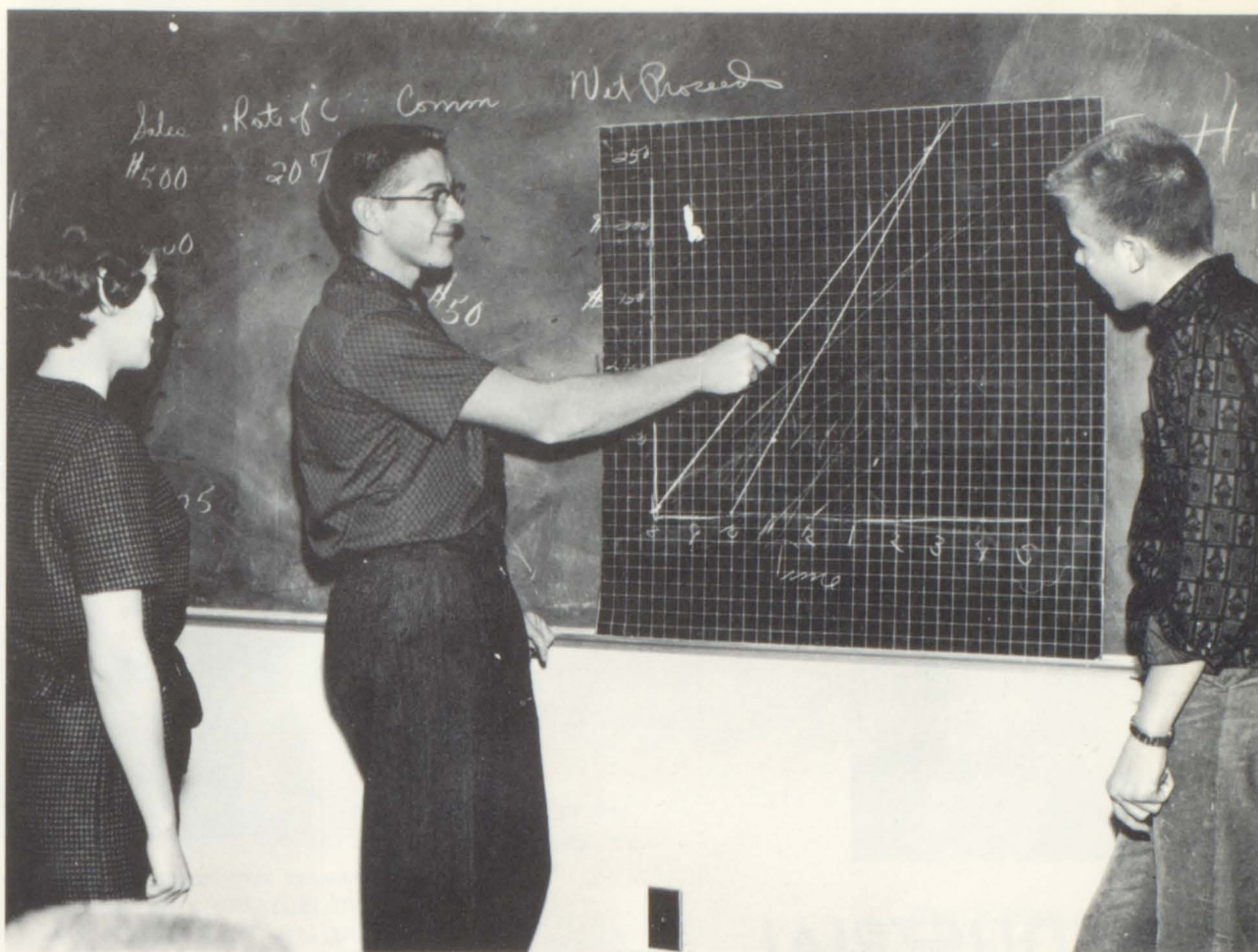
E. A. RAYMOND  
Mathematics



LOIS HANLY  
Mathematics  
Dean of Girls







MR. WETTSTEIN SHOWS TWO HIGHER ALGEBRA STUDENTS HOW TO GRAPH AN ALGEBRAIC LINEAR EQUATION — Pat Christensen, Mr. Wettstein, Don Johnson.

ARNOLD SCOFIELD  
Mathematics  
Drivers Training

ROBERT HUNTER  
Mathematics

DAVID WETTSTEIN  
Mathematics

GEORGE PELTO  
Mathematics







RUSSEL HAMMOND  
Industrial Arts



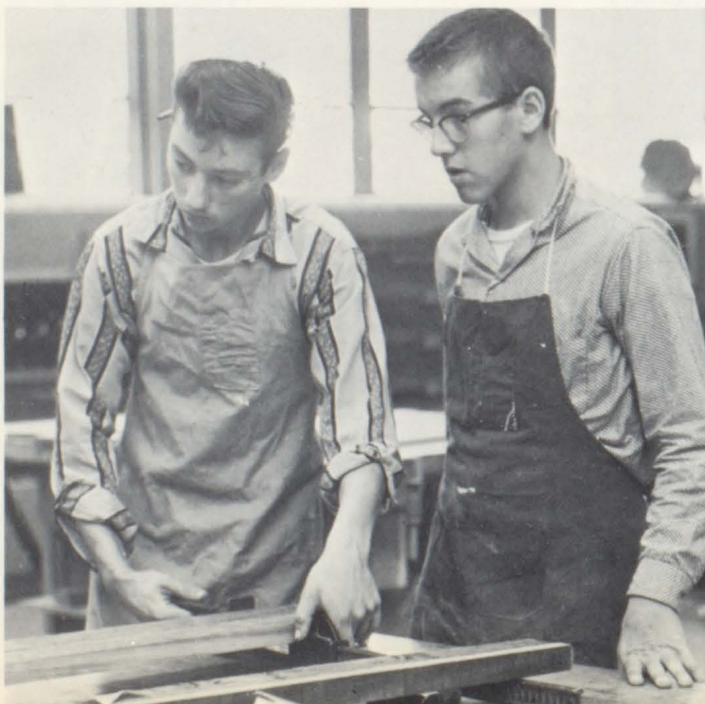
FORREST RAY  
Industrial Arts



A PRIMARY REQUIREMENT OF JUNIOR HIGH SHOP STUDENTS IS LEARNING THE USE AND OPERATIONS OF A PLANE. — Mr. Hammond, Randy Sovia.

## INDUSTRIAL ARTS — FOR YOUNG OR OLD

TWO SENIOR HIGH SHOP STUDENTS WATCH AS A GLUED PIECE IS BEING TAKEN OUT OF THE CLAMPS. — Don Koch, Mike Dubois.



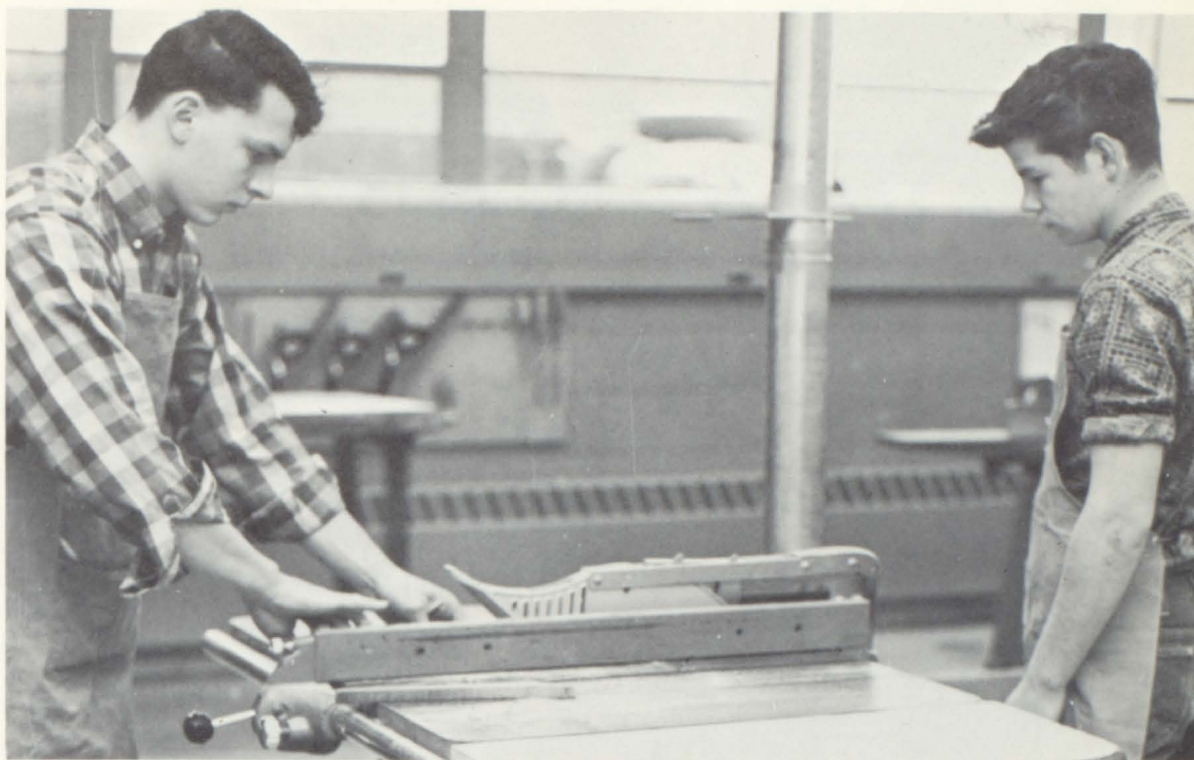
Industrial arts are courses to prepare boys for the future in giving them training needed for vocations, in addition to providing them with basic skills.

Beginning in the seventh grade, the boys are required to take industrial arts, where they work in drawing, crafts, leather, plastics, and metal tooling. The students exercise their skills in making such things as key cases, pen holders, letter openers, and book markers of leather. Eighth graders enroll in woodworking, drawing, crafts, and is the first time they learn the fundamentals of electricity and its applications. The freshmen exhibit further abilities in industrial arts by spending a third of the year working with and learning how to use the machines properly while working with wood and large pieces of furniture. The next twelve weeks of the year are used to further the students' knowledge of electricity. The last third of the year is given over to drawing.

Senior high students are offered a choice of various shops. The students become more familiar with the use of machines; they may study general metals, which includes lathe and bench metal work, or cabinet building, or architectural drawing. Advanced students may even design to scale a model of their favorite home.



OPERATING ONE OF THE MANY PIECES OF POWER EQUIPMENT IN THE WELL-SUPPLIED WOOD WORKING SHOP ARE CHUCK PATRIN AND LARRY HOULE.



A REMODELED CLASSROOM AND NEW FACILITIES GIVE THESE DRAWING STUDENTS A BETTER OPPORTUNITY TO LEARN DRAWING SKILLS — Norman Moody, Mr. Schumacher.



JOHN REIMAN  
Industrial Arts  
Arts

JOHN SCHUMACHER  
Industrial Arts  
Athletics







MISS WATSON HELPS  
AN ADVANCED ART  
STUDENT SHAPE A  
PIECE OF POTTERY ON  
THE NEW POTTERS  
WHEEL — Miss Watson,  
Pam Boese.

## ARTS ATTAIN NEW STATURE

When new demands are made on a curriculum, space and instruction must be provided for that activity. A new, remodeled room has appeared this year for art. With approximately 250 students in both junior and senior high taking these courses, a new and better equipped room was provided which was under the direction of a new-comer to the FLHS faculty, Miss Watson.

The junior high students started out the year with comparatively simple projects, such as drawing and painting, and later in the year, they tackled sculpture and the making of pottery. Throughout the year the students studied commercial design, art in the community, and art in personal life. Some projects completed were: head and face drawing, designing mask, simple sculpturing, and the composition of posters and pottery.

Senior high art students have a more advanced course. The students started out the first nine weeks with drawing and painting. Something new this year was student modeling for each other's pictures. The history of art was also studied. Some projects by the students included: figure drawing, print making, linoleum and wood block carving, ceramics, sculpturing, and the making of pottery. The senior high students had to complete individual projects such as fabric printing, dress designing, and auto designing.

NANCEE WATSON  
Art





# PHYSICAL FITNESS IMPORTANT . . .

In this modern age, physical education is emphasized more than ever before. With the President's Physical Fitness Program, Forest Lake has been emphasizing body conditioning through several extensive exercises. Emphasis is also placed on individual work rather than relying upon a team to pull the individual through. Phy. ed. is required of students through the sophomore year. A few senior high girls may take advantage of doing student teaching to further interests in physical education. In addition to actual activity requirements, students are also required to know all rules for the sports pursued during the year, such as: basketball, tennis, baseball, volleyball, kickball, soccer, badminton, shuffleboard and many more.

"THE IDEA IS TO GET IT OVER THE NET, NOT UNDER!!"



CAROL WEISSBROD  
Girls' Phy. Ed.



KENNETH HANSON  
Boys' Phy. Ed.  
Driver Training  
Athletics  
Football



JACK CONLEY  
Boys' Phy. Ed.  
Athletics  
Basketball





LIBRARY HELP — Mrs. Carpenter, Librarian; Paula Anderson, Violet Carter, Janice Haluptzok, Carol Oelke, Shirley Haluptzok, Cecelia Gilbert, Mary Bjontes, Donna Mueller.

## ENLARGED LIBRARY RESOURCES OFFER STUDENTS NEW OPPORTUNITIES

Centrally located in the main high school building, the high school library, more than ever before, has served as a focal point for student scholastic activity. From 8:30 to 4:30 students were to be found pursuing projects, searching for reference materials, or just finding a good book to read. During many days of the year, study hall students had access to the enlarged resources, and classes were able to reserve the library for special research and instruction.

The library is well equipped for the students of Forest Lake High School. It has up-to-date newspapers, current magazines, and many books for the reading enjoyment of the students. Many volumes of encyclopedias and reference books are used to help students compose well-written reports and themes. Numerous fiction and non-fiction books line the shelves for the students' pleasure.

The librarian, Mrs. Thea Carpenter, was always on hand to help find that lost book or to keep order in the library. Mrs. Elsie Houfer and several high school girls assisted Mrs. Carpenter with multitudes of details essential to the operation of the library.

THEA CARPENTER  
Librarian





# SENIORS



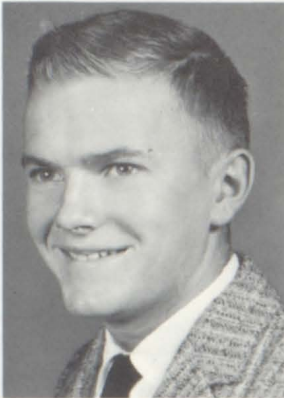




WILLIAM AMES

SUSAN ANDERSEN

MARILYN ANDERSON



JUDY ANKRUM

CHARLES AVERY

SUSAN BECKER



FRED BEEKSMA

CLARA BERGERON

PAULA BERTSON



KAREN BEYER

KAY BJORNSTAD

PAMELA BOESE



CALVIN BOWENS

MAUREEN BURKE

ANDREA CARDINAL



KAREN CARDINAL

DONNA CARLSON

CHARLOTTE CASE

SHARON CASE

CAROLE CHRISTENSEN

THOMAS DAHLBERG

VICTORIA DANKS

NANCY DECKER

JAMES DEGENDORFER

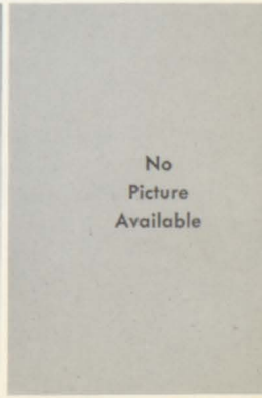
MICHAEL DUBOIS

GAREN ENGQUIST

AUDREY ENGSTROM

CLARK ERICKSON

WENDEE FORSBERG







EILEEN FUGLIE

DEAN GARDNER

MURIEL GARRISON

CECELIA GILBERT



YVONNE GUSTAFSON

SHIRLEY HALUPTZOK

RAYMOND HALVERSON

KAREN HANSEN



GARY HAUBLE

RICHARD HAUER

JUDITH HAWKINSON

DIANE HEHNER

MARIANNE HERMES

GARY HOULE

LAWRENCE HOULE





RONALD HUSNIK

JUDITH ISTVANOVICH

DENNIS JOHNSON

EVELYN JOHNSON



GLEN JOHNSON

KEVIN JOHNSON

STEVEN JOHNSON

WAYNE JOHNSON



STEVEN KARI

SHARON KNUTSON

DONALD KOCH

LOUIS KONOBECK



VICKI LARSON

WILLIAM LARSON

PEGGY LEHMANN





JEAN LeROUX

LAWRENCE LOCKE

JOYCE LUNDBERG

DANIEL LUNDQUIST

KENNETH MacLEAN

CAROL MAKKYLA

ORVAL MATHESON

CORALIE McKUSICK

MARY MILLS

GEORGE MIRON

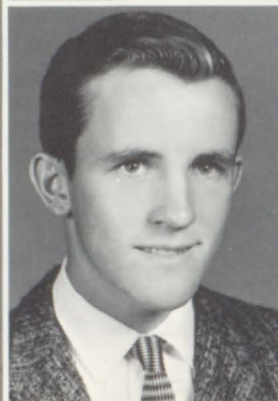
DAVID MONTAIN

DONALD MOORHOUSE

JULIE MOXNESS

HOWARD NIELSEN

AUDREY NORDIN







RICHARD NORTON

KATHLEEN O'BRIEN

WILLIAM O'HARA



RICHARD OLSEN

ROBERT OLSON

JAMES ONSAGER



JANET PALMER

PAMELA PALMER

CHARLES PATRIN



JOHN PETER

KENNETH PETERSON

MARLYS PETERSON



GARY PITSCHKA

GARRY PRANKE

JULIE PROULX





FAITH RADTKE



MICHAEL RARDON



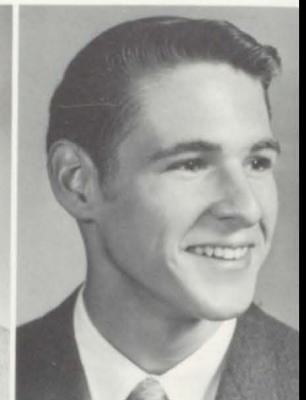
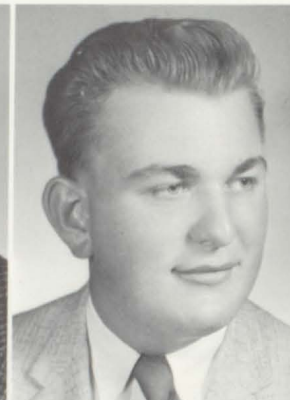
LESTER RYDEEN

KENNETH SAHLIN

DAVID SANDSTROM

MARVIN SCHERER

JOSEPH SCHLAEGER



STEVEN SCHMITT

MARIAN SCHROEDER

MARLYS SCOTT

RAE ANN SIVIGNY

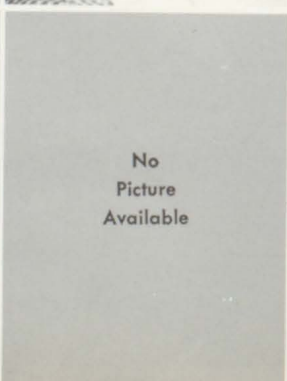


MARILEE SMITH

KENNETH SOLOMON

CRAIG STARKWEATHER

ROLAND STRICKLIN





GEROLD SWANSON



LELAND SWENSON



DIANE THRALL



JUDITH THURNBECK



MARY VOGEL



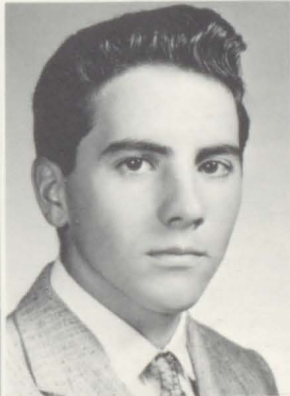
LINDA VOSS



DENNIS WAHA



GARY WALBERG



LAURANCE WALDOCH



MICHAEL WEISS



RONALD WESTBERG



MARTIN WHITNEY



LAVONNE WIEZYCKI



JULIE WIGHTMAN



GERALD WRIGHT





SENIOR CLASS OFFICERS: Ken MacLean, Vice President; Jerry Wright, President; Roland Stricklin, Secretary; Kenn Sahlin, Treasurer.

## SENIOR DIRECTORY

### WILLIAM (BILL) AMES

SUSAN (SUE) ANDERSEN ... FORESTER Co-Editor ...  
Choir ... Triple Trio ... BREEZE ... FHA ... All School  
Play Crew ... Thespians.

MARILYN ANDERSON ... GAA ... FHA ... Library Help  
... Bus Patrol.

JUDITH (JUDY) ANKRUM ... Post Graduate.

CHARLES (CHUCK) AVERY ... Band ... Wrestling ... Golf  
... Lettermens Club.

SUSAN (SUE) BECKER ... FHA ... Library Help ... FOR-  
ESTER.

FRED BEEKSMA ... Basketball ... Football ... Tennis ...  
Band ... Lettermens Club.

CLARA (SUSIE) BERGERON ... FHA ... Pep Club ...  
FORESTER.

PAULA BERTNSON ... Choir ... Pep Club ... FHA.

KAREN BEYER ... Transfer from St. Cloud ... Thespians  
... All School Play Cast ... FORESTER.

KAY BJORNSTAD ... Transfer from Hanska ... Band ...  
Band Council ... Choir ... Triple Trio ... National Honor  
Society.

PAMELA BOESE ... FHA Vice President ... FORESTER.

CALVIN (CAL) BOWENS ... FFA ... Wrestling ... Tennis.

MAUREEN BURKE ... Transfer from Holly, Michigan ...  
Thespians ... FORESTER.

ANDREA (DREA) CARDINAL ... Pep Club ... Choir ...  
Triple Trio ... FORESTER.

KAREN CARDINAL ... FORESTER ... Pep Club.

DONNA CARLSON ... Audio-Visual Secretary ... Bus Pa-  
trol ... BREEZE ... FHA ... Teacher's Secretary.

CHARLOTTE (CHAR) CASE ... Band ... Choir ... Thes-  
pians ... BREEZE ... FORESTER Ass't. Editor ... Freshman  
Class Secretary ... GAA President ... FHA ... All School  
Play Cast and Crew (3) ... Pep Club ... Teacher's Secre-  
tary.

SHARON CASE ... FORESTER Co-Editor ... Student Coun-  
cil Vice President ... Freshman Class Treasurer ... FHA  
... GAA Treasurer ... Band ... Choir ... Thespians ...  
BREEZE ... Pep Club ... All School Play Cast and Crew  
... Teacher's Secretary.

CAROLE CHRISTENSEN ... GAA ... Student Council ...  
FHA ... Office Help ... Soph. and Junior Class Treasurer  
... Thespians.

THOMAS (TOM) DAHLBERG ... Wrestling ... FFA.

VICTORIA (VICKIE) DANKS ... FORESTER Business Manager  
... Pep Club ... Thespians ... FHA ... BREEZE ... All  
School Play Cast and Crew (4).

NANCY DECKER ... Transfer from Harding, St. Paul ...  
Choir ... FHA ... GAA ... Thespians ... All School Play  
Crew.

JAMES (JIM) DEGENDORFER ... Basketball ... Baseball  
... Lettermens Club ... Soph. and Homecoming Candidate.

MICHAEL (MIKE) DUBOIS ... FFA ... Wrestling ... Track  
... Lettermens Club.



GAREN ENGQUIST ... FFA Secretary ... FFA Vice President.

AUDREY ENGSTROM ... FHA President and State Parl. ... FFA Queen ... Student Council Parl. ... Natl. Honor Society ... Choir ... Choir Council ... Triple Trio ... BREEZE ... FORESTER ... Freshman Class Vice President.

CLARK ERICKSON ... Bus Patrol.

WENDEE FORSBERG ... GAA Secretary ... Pep Club ... FHA ... Choir ... Triple Trio ... FORESTER.

EILEEN (DELE) FUGLIE ... GAA ... FHA ... Office Help ... Majorette ... Band Secretary ... All School Play Cast and Crew ... Soph. and Homecoming Candidate ... Jr. Class Vice President ... BREEZE ... FORESTER ... Thespians.

DEAN GARDNER ... Football ... Basketball ... Baseball ... Tennis ... Lettermens Club ... Band ... Soph. King ... Homecoming Candidate.

MURIEL GARRISON ... GAA ... All School Play Crew.

CECELIA (SIS) GILBERT ... GAA ... Tumbling ... All School Play Crew ... Library Help ... Teacher's Secretary.

YVONNE GUSTAFSON ... FHA ... GAA ... Pep Club ... Choir ... Triple Trio ... Office Help ... FORESTER ... Thespians ... All School Play Cast and Crew.

SHIRLEY HALUPTZOK ... FHA ... Library Help ... Nurse's Help.

RAYMOND (RAY) HALVERSON ... Band ... Band Council President ... All School Play Cast (3) ... Thespians.

KAREN HANSEN ... Pep Club ... FHA ... FORESTER ... Bus Patrol.

RICHARD HAUER ... FFA ... Bus Patrol.

GARY HAUBLE ... Bus Patrol ... Basketball ... Cross Country ... Track ... Lettermens Club.

JUDITH (JUDY) HAWKINSON ... Band ... FHA ... Library Help ... Teacher's Secretary ... Tumbling ... Bus Patrol ... Office Help ... All School Play Crew.

DIANE HEHNER ... BREEZE Editor in Chief and News Editor ... FHA ... Pep Club ... Thespians ... All School Play Crew.

MARIANNE HERMES ... Choir ... FHA ... Pep Club ... Thespians ... BREEZE.

GARY HOULE

LAWRENCE (LARRY) HOULE ... Cross Country ... Lettermens Club ... Wrestling.

RONALD (RON) HUSNIK ... FFA ... Basketball ... Football ... Tennis ... Track ... Lettermens Club ... Soph. Candidate ... Homecoming King.

JUDITH (JUDY) ISTVANOVICH ... Choir ... FORESTER ... Pep Club.

EVELYN (EV) JOHNSON ... Majorette ... GAA ... All School Play Crew.

GLEN JOHNSON

KEVIN JOHNSON ... Transfer from Murray, St. Paul ... All School Play Cast.

STEVEN (STEVE) JOHNSON

WAYNE JOHNSON ... Band ... Wrestling ... All School Play Crew (2).

STEVEN KARI ... FFA.

SHARON KNUTSON ... Choir ... Triple Trio ... Thespians Vice President ... All School Play Cast and Crew ... FORESTER ... Teacher's Secretary.

LOUIS KONOBECK

VICKI LARSON ... GAA ... Bus Patrol ... Audio Visual ... FORESTER ... Teacher's Secretary.

WILLIAM (BILL) LARSON ... FFA ... Bus Patrol ... BREEZE ... All School Play Cast (3) and Crew (3) ... Thespians.

JEAN LeROUX ... Transfer from Mahtomedi ... FORESTER ... Nurse's Help.

PEGGY LEHMANN ... GAA ... Band Twirler ... Cheerleader ... Jr. Class President ... Office Help ... Girls' State Rep. ... Homecoming Candidate.

LAWRENCE (LARRY) LOCKE ... Band ... Wrestling ... All School Play Cast (2).

JOYCE LUNDBERG ... Transfer from Hastings ... Thespians ... Audio Visual.

DANIEL (DAN) LUNDQUIST ... Band ... Band Council ... Choir.

KENNETH (MAC) MacLEAN ... Baseball ... Track ... Basketball ... Cross Country ... Lettermens Club ... Bus Patrol ... Band ... Senior Class Vice President ... All School Play Crew.

CAROL MAKKYLA ... National Honor Society.

ORVAL MATHESON ... Band ... Choir ... Football ... Basketball ... Tennis.

CORALIE McKUSICK

MARY MILLS ... FHA ... GAA ... Pep Club ... Thespians ... All School Play Crew ... Nurse's Help ... Teacher's Secretary ... Homecoming Candidate.

GEORGE MIRON ... FFA President and Reporter.

DAVID (DAVE) MONTAIN ... Basketball ... Wrestling.

DONALD (DON) MOORHOUSE ... Student Council ... Choir.

JULIE MOXNESS ... FHA ... Pep Club ... Sophomore Queen ... Homecoming Queen.

HOWARD NEILSEN ... Thespians ... All School Play Cast (3) and Crew (3) ... Football ... Lettermens Club.

AUDREY NORDIN ... FHA ... Library Help ... Bus Patrol ... Pep Club ... FORESTER.



RICHARD (DICK) NORTON ... Baseball ... Basketball ... Cross Country ... Football ... Lettermen's Club.

KATHLEEN (KATHY) O'BRIEN ... Choir ... Triple Trio ... BREEZE ... All School Play Crew ... FHA Treas. ... FFA Queen ... Pep Club ... Student Council President ... Soph. and Homecoming Candidate ... FORESTER.

WILLIAM (BILL) O'HARA ... FFA ... Choir ... Audio Visual ... All School Play Cast.

RICHARD (RICK) OLSEN ... Student Council ... Golf ... Tennis.

ROBERT (BOB) OLSON

JAMES (ONSIE) ONSAGER ... Audio Visual ... All School Play Crew.

JANET PALMER ... FHA ... Pep Club ... Office Help.

PAMELA (PAM) PALMER ... Pep Club ... Office Help.

CHARLES (CHUCK) PATRIN ... Baseball ... Basketball ... Football ... Tennis ... Lettermen's Club ... Soph. and Homecoming Candidate.

JOHN PETER

KENNETH (KEN) PETERSON ... Transfer from St. Bernards, St. Paul ... Basketball ... Cross Country ... Track ... Lettermen's Club.

MARLYS (PETEY) PETERSON ... Pep Club ... Choir ... FORESTER ... Thespians ... Teacher's Secretary.

GARY PITSCHKA

GARRY PRANKE ... Transfer from White Bear Lake.

JULIE PROULX ... FHA ... GAA.

FAITH RADTKE ... Library Help ... All School Play Crew ... FORESTER ... Office Help.

MIKE RARDON ... Band ... All School Play Crew.

LESTER RYDEEN ... FFA.

KENNETH (KENN) SAHLIN ... Football ... Basketball Man ... Track ... Band ... Choir ... Lettermen's Club President ... Student Council ... Sr. Class Treasurer.

DAVID (DAVE) SANDSTROM ... Tennis ... Lettermen's Club ... Basketball ... Football ... Student Council ... Homecoming and Soph. Candidate.

MARVIN (MARV) SCHERER ... Band ... Choir ... Wrestling.

JOSEPH (JOE) SCHLAEGER

STEVEN (STEVE) SCHMITT ... FFA.

MARIAN SCHROEDER ... FHA Treas. ... BREEZE ... Thespians ... All School Play Cast and Crew ... Library Help.

MARLYS SCOTT ... Transfer from Bloomington.

RAE ANN SIVIGNY ... Band Majorette.

MARILEE SMITH ... Thespian Clerk ... BREEZE Bus. Manager ... All School Play Cast and Crew (4).

KENNETH (KEN) SOLOMON ... Basketball ... Football.

CRAIG STARKWEATHER ... Transfer from Northport, Michigan ... Basketball ... Choir.

ROLAND (STRIC) STRICKLIN ... FFA Treas. ... Track ... Cross Country ... Wrestling ... Lettermen's Club Secretary-Treas. ... Sr. Class Secretary.

GAROLD SWANSON

LELAND SWENSON ... FFA President.

DIANE THRALL ... Freshman Class President ... FHA ... GAA Secretary ... Band ... Choir ... Triple Trio ... Student Council ... FORESTER.

JUDITH (JUDY) THURNBECK ... FHA ... GAA ... Tumbling ... Soph. Class Sec. ... Band ... Choir ... Triple Trio ... Cheerleading Capt. ... FORESTER ... All School Play Crew ... Natl. Honor Society.

MARY VOGEL ... Pep Club ... GAA ... Library Help ... Jr. Class Secretary ... Choir.

LINDA VOSS ... Pep Club ... FHA ... GAA ... Office Help ... FORESTER.

DENNIS WAHA ... FFA.

GARY WALBERG ... FFA.

LAURANCE (LARRY) WALDOCH ... Soph. Class Vice President ... Band ... Band Council ... Track ... BREEZE Sports Editor.

MICHAEL (MIKE) WEISS ... Choir.

RONALD (RON) WESTBERG ... Band.

LAVONNE WIEZYCKI ... Pep Club ... FHA ... Teacher's Secretary.

JULIE WIGHTMAN ... GAA ... FHA ... Pep Club ... Library Help ... Teacher's Secretary.

GERALD (JERRY) WRIGHT ... FFA ... Audio Visual ... Thespians President ... All School Play Cast & Crew (4) ... Sr. Class President ... Boys' State Rep.

SMILE ... YOU'RE ON  
CANDID CAMERA!!



# 1962 TOP SCHOLARS



CAROL MAKKYLA  
Valedictorian



AUDREY ENGSTROM  
Salutatorian



Kay Bjornstad



Gerald Wright



Laurance Waldoch



SENIOR NATIONAL HONOR SOCIETY — ROW 1 — Diane Hehner, Carol Makkyla, Audrey Engstrom, Kay Bjornstad, Carole Christensen. ROW 2 — Larry Waldoch, Jerry Wright, Ray Halverson, Judy Thurnbeck, Sue Andersen, Mr. Cohoes.

1. Carol Makkyla . . . . .	3.8400	8. Raymond Halverson . .	3.2273	15. Marlys Peterson . . . . .	3.0500
2. Audrey Engstrom . . . .	3.6750	9. Carole Christensen . . .	3.1750	16. Steven Schmitt . . . . .	3.0227
3. Kay Bjornstad . . . . .	3.6136	10. Marian Schroeder . . .	3.1739	17. Sharon Case . . . . .	2.9750
4. Laurance Waldoch . . .	3.4286	11. Diane Hehner . . . . .	3.1667	18. Orval Matheson . . . . .	2.9500
5. Gerald Wright . . . . .	3.3864	12. Richard Olsen . . . . .	3.1600	19.5 Charlotte Case . . . . .	2.9000
6. Judith Thurnbeck . . . .	3.3478	13. Judy Istvanovich . . . .	3.1500	19.5 Kathleen O'Brien . . . .	2.9000
7. Susan Andersen . . . . .	3.3000	14. Mary Vogel . . . . .	3.0714		





ROW 1 — Lloyd Marier, Mickey Gibbs, Faith Radtke, Dean Thompson, Ronnie Westberg, Dennis Eckdahl, Mary Sue Lind. ROW 2 — Diane Hehner, Steven Johnson, Rae Ann Sivigny, Sharon Case, Linda Howat, Carole Christensen, Mary Pat Weaver. ROW 3 — Dennis Johnson, Gerald Wright, Betty Jean Carpenter, Larry Owings, Lee Whitman, Charlotte Case, Marvin

Scherer. ROW 4 — Robert Olson, Larry Waldoch, Julie Moxness, Rickie Casselton, Gary Houle, Sharon McNamara, Mary Ellen Perreault, Clara Bergeron. ROW 5 — Arlene Watson, Pamela Peterson, Marilee Smith, Holly Elwell, Gary Hauble, Judy Minnick, Susan Andersen, Chucky Hanratty. Teacher — Mrs. Harold Manley.

## AFTER TWELVE YEARS . . .

ROW 1 — Bonnie Schmidt, Jim Nelson, Mary Johnson, Ray Halverson, Judy Hawkinson, Janet Palmer, Wendee Forsberg. ROW 2 — Jackie Gamelin, Larry Houle, Ricky Christianson, Alice Anderson, Pamela Palmer, Chucky Patrin, Ronnie Husnik, Billy Nelson. ROW 3 — Kathy O'Brien, Norma Blaskely, Peggy Lehmann, Barry Phaneuf, Kenny Sahlin, Donald Koch, Anita Wright. ROW

4 — Judy Thurnbeck, Mary Vogel, Jim Campbell, Sharon Winkler, David Montain, June Behrens, Steve Bassett. ROW 5 — Joey Schaelger, Steve Schmidt, Judy Peterson, Marianne Hermes, Audrey Engstrom, Roger Pederson, Robert Genz. ROW 6 — Sherry Trien, Jerry Nelson, Marty Whitney, Jim Boyd. Teacher — Miss Eicher.





# ACTIVITIES AND ORGANIZATIONS





# COUNCIL ASSERTS LEADERSHIP IN STUDENT AFFAIRS



**STUDENT COUNCIL REPRESENTATIVES** — SITTING — Kenn Sahlin, Greg Benson, Dave Sandstrom, Craig Moen. STANDING — Anita Gay, Mary Heisler, Sheryl Miller, Janet Thorp, Audrey Engstrom, Sharon Case, Phyllis Amundson, Anne Jenuwine.



**STUDENT COUNCIL COMMISSIONERS** — SITTING — Candy Proulx, Penny Carpenter, Joan Bond, Carole Christensen, Phyllis Amundson, Sharon Yost. STANDING — Donna Bond, Vince Monson, Cheryl Moody, Rodney Erickson, Pat Christensen, Jim Yale, Doug Harper.

Under the leadership of President Kathy O'Brien, advisor Mr. Wittig, and assistant advisor Mr. Matteson, the 1961-1962 Student Council has accomplished much in arousing the interest of students in school government.

Many important projects were undertaken during the year. The SC's first main project was the annual 'back to school' dance after the first home game with Chisago. The Student Council organized a drive for activity ticket sales, and 'Granger the Ranger' was awarded to the Sophomore Class.

The council conducted several surveys regarding student privileges and responsibilities in near-by schools, including North Branch, White Bear Lake, and Lindstrom to ascertain measures being taken in these schools to control the vexing problems of the noon hour.

A Civil Defense survey was taken to help determine the needs of the school and desires and plans of the parents, board, and administration regarding the problems of possible nuclear attack.

Slated for late in the spring was the annual convention at which the commissioners and officers were to be nominated by the student body for their respective offices.

**STUDENT COUNCIL OFFICERS CONFER WITH THEIR ADVISOR, MR. WITTIG** — Mr. Wittig, Sharon Case, vice president; Sandy Kasma, secretary; Anne Jenuwine, parliamentarian; Kathy O'Brien, president.





CONSULTING WITH THEIR ADVISORS, BREEZE EDITORS RECEIVE ADVICE ABOUT THE PAPER POLICY — SITTING — Marilee Smith, business manager; Judie Martz, news editor; Diane Hehner, managing editor; Candy Proulx, feature editor. STANDING — Larry Waldoch, sports editor; Mr. Welshons and Mr. Arneson, faculty advisors.



## BREEZE REORGANIZATION IN SECOND PHASE

Gradually adjusting to the reorganization of duties which took place last year, the BREEZE editors and staff members once again found themselves laboring on Monday nights to meet the newly tightened deadline.

After a series of opportunities to show ability in feature writing, headline writing, and picture selection, Candy Proulx was chosen the new feature editor. Sports had greater coverage this year with the addition of Larry Waldoch to the staff as sports editor.

Also relatively new is the position of business manager. Marilee Smith fills this post by typing, handling subscriptions, and performing other office duties assigned to her.

Consistent with BREEZE editorial policy over the years, the staff and advisors sought constantly to bring to the readers the hard news of the school and its personnel, in addition to an ever-widening array of editorial features which were designed to interpret the interests and spirit of the student body and faculty.

BREEZE STAFF MEMBERS PAUSE IN THE MIDDLE OF A BUSY DAY TO GATHER FOR A PICTURE.







MR. ROSE AND ACCOMPANIST COLLEENE LAWLER GO OVER A NEW SELECTION BEFORE CHOIR REHEARSAL BEGINS.

## VOCALISTS SEEK TO SATISFY FL'S MUSIC APPETITE

With a smaller choir and more rehearsal time available, the sixty-eight voice choir was able to enlarge their repertoire further this year. Twenty-four new choir members experienced the excitement of presenting a concert for the first time when, under the direction of Mr. Rose, a joint Christmas concert with the band was presented December 22. Several new selections were offered by the choir as well as the traditional Christmas carols.

Following three and one-half months of concentrated effort, the choir participated in the annual District 25 music contest held at Lindstrom late this spring. The choir offered two selections representative of their complete repertoire. Forest Lake was also vocally represented at the contest by the senior Triple Trio.

Formal attire was part of the atmosphere surrounding the Spring Concert again this year. The choir presented three matinees and two evening performances May 10-12. Traditionally the first half of the performance was given to sacred music, while the second half consisted of secular choral selections.

FORMED A YEAR AGO LAST MARCH, THE TRIPLE TRIO HAS THIS YEAR BEEN WELDED INTO A PERFORMING GROUP WHO WERE CALLED UPON TO PROVIDE ENTERTAINMENT AT VARIOUS SCHOOL FUNCTIONS. — FRONT ROW — Kathy O'Brien, Kay Bjornstad, Yvonne Gustafson, Audrey Engstrom. BACK ROW — Sue Anderson, Diane Thrall, Sharon Knutson, Andrea Cardinal, Judy Thurnbeck.







THE 1961-62 CONCERT CHOIR UNDER THE DIRECTION OF MR. ROSE.

ALL RIGHT BASSES, LET'S HEAR YOU! — Mr. Rose



#### SOPRANOS

Phyllis Amundson  
Sue Anderson  
Darlene Benson  
Chris Berger  
Judy Bergum  
Paula Berntson  
Kay Bjornstad  
Deanna Booren  
Nancy Decker  
Pat Gilbert  
Yvonne Gustafson  
Mary Heisler  
Marianne Hermes  
Judy Istvanovich  
Kay Johnson  
Jennifer Langdon  
Sandra Marier  
Cheryl Myer  
Kathy O'Brien  
Marlys Peterson  
Joan Petzka  
Donna Storkan  
Sue Stuard  
Gerry Walquist

#### ALTOS

Kathy Balzart  
Andrea Cardinal  
Charlotte Case  
Charlotte DeLong  
Audrey Engstrom  
Wendee Forsberg  
Barbara Glenn  
Judy Granholm  
Karen Houle  
Bonnie Kendrick  
Sharon Knutson

Carol Larson  
Colleene Lawler  
Naomi Moody  
Linda Owens  
Cheryl Rehbein  
Vickie Stanley  
Audrey Timm  
Diane Thrall

#### TENORS

Sharon Case  
Peter Edstrom  
Doug Holcomb  
Dan Lundgren  
Dan Moorhouse  
Bruce Ramsden  
Kenn Sahlin  
Judy Thurnbeck  
Esther Vanderpas  
Mary Vogel

#### BASSES

Steve Anderson  
Don Lindgren  
Dan Lundquist  
Alan Maranville  
Orval Matheson  
Bob Mattson  
Gary Miller  
Loren Nickelson  
Bill O'Hara  
Don Perrault  
Winston Peterson  
Duane Knutson  
Ron Ramsden  
Marvin Scherer  
John Simmons  
Craig Starkweather



# RESPONSIBILITIES GREAT FOR STAFFERS



SUE ANDERSEN  
Co-Editor



SHARON CASE  
Co-Editor



CHARLOTTE CASE  
Assistant Editor



NORMA DANKS  
Junior Editor

A most important organization at FLHS is the FORESTER staff. Their job is a big one and is sometimes unnoticed by the students. But it cannot be entirely forgotten because the staff and their advisor work hard all year meeting their deadlines. This work falls on the staff as a whole but there are many editors who help to make the annual what it is. Most important are co-editors Susan Andersen and Sharon Case and the assisting editors Charlotte Case and Norma Danks. Another important person is Vicki Danks, the business manager. Her job is to handle all of the business affairs. There are also section editors, subscription staff, advertising staff, and last but not least is the advisor Mr. Paul Rafferty, who is so helpful and patient.

A SATURDAY FINDS THESE FORESTER STAFF MEMBERS BUSILY WORKING TO MEET A DEADLINE — Vickie Danks, Norma





1961-'62 FORESTER STAFF

Danks, Sharon Case, Pam Boese, Cheryl Moody, Judy Istvanovich, Sue Andersen, Charlotte Case, Judy Thurnbeck.



TAKING THEIR YEARBOOK PROBLEMS TO THEIR ADVISOR, THIS YEAR'S FORESTER CO-EDITORS SEEK HELP IN MAKING IMPORTANT DECISIONS — Sue Andersen, Mr. Rafferty, Sharon Case.





A SUNNY DAY IN OCTOBER FINDS THE FLHS MARCHING BAND DRILLING IN PREPARATION FOR THE HOMECOMING FESTIVITIES.



THESE FOUR MAJORETTES AND TWIRLER LEAD THE BAND IN VIRTUALLY ALL OUTDOOR ACTIVITY — Sandy Marier, Mara Kauls, Dele Fuglie, Diane Danning, Peggy Lehmann.

TWO NEW BASS DRUMS AND FOUR NEW SNARE DRUMS ARE PROUDLY DISPLAYED BY THE PERCUSSION SECTION OF THE BAND.





# NEW INSTRUMENTS, UNIFORMS ADD LUSTER TO FL BAND

1961-1962 has once again been a busy time for the Forest Lake High School band. One of the highlights remembered of their marching season was the Lions Club Convention at Duluth on June 5. The band placed fifth in competition among the top thirty bands in Minnesota. They also marched in the surrounding area parades at Lindstrom, Cambridge, Taylor Falls, and in the Fourth of July parade here in Forest Lake. They climaxed their summer appearances at the Minneapolis Aquatennial parade.

Shortly after the marching season was over, the band began rehearsing for the coming school year events such as the all-important Homecoming festivities, the annual Christmas concert, the dedication of the new Memorial Hospital, spring concert, in addition to the many games and pepfests. The band took part in the District Music Contest at Lindstrom where the band has received "A" ratings for the past fourteen years.

Taking quite a load off Mr. Nelson's shoulders is Mr. Partington, the new junior band director, who directs the second band during home room and gives private lessons to junior band members during class hours.

Through candy sales, paper drives, bake sales, concerts, and hard work by each band member, the FLHS band will be taken to the north country for the 1962 Lions Club Convention in Winnipeg, Canada early in June.



"DELE, WHAT ARE THESE MOTH HOLES DOING HERE?" — Mr. Nelson and Dele Fuglie, band secretary.

## BARITONES

Dan Lundquist  
Marvin Scherer  
Dale Kolbow

Bob Thurnbeck

## BASSES

Larry Locke  
Vincent Monson  
Dale Monson  
Mike Johnson

## BASSOON

Paul Havens

## CLARINETS

Ray Halverson  
Sharon Case  
Diane Thrall  
Joan Petzka  
Candy Proulx  
Kathy Ekblad  
Karen Elmstrom  
Barbara Anderson  
Carolyn Hawkinson  
Kay Johnson  
Chuck Dale  
Sandy Johnson  
Pat Corbett  
JoAnn Vogel

## BASS CLARINETS

Colly Lawler  
Dianne Johnson

## CORNETS — TRUMPETS

Charlotte Case  
Judy Hawkinson  
Larry Waldoch  
Craig Moen  
Ron Wells

Laurel Cakebread  
Dave Kleinendorst

Rodney Amundson

## FLUTES

Kay Bjornstad  
Pat Christensen  
Sandra Waldo  
Deirdre Lellman  
Sue Stuard  
Joan Bond  
Doug Harper  
Janet Thorp  
HORNS  
Judy Thurnbeck  
Judie Martz  
Naomi Moody  
Audrey Hess  
Cindy Fors

## OBOE

Bob Engquist

## PERCUSSION

Kenn Sahlin  
Wayne Johnson  
Chuck Avery  
Ken MacLean  
Tom Wegleitner  
Greg Linnell  
Gary Dupre

Gordon Marcott

Sharon Wallenberg

## ALTO SAXOPHONES

Sandy Kasma  
Cheryl Moody  
Marie Tennis  
Cathy Lawler

## BARITONE SAXOPHONE

Susan Lane

## TENOR SAXOPHONES

Irvin Harper  
Connie Carlson





# FFA, AG CONTINUES WINNING ROLE IN FLHS LIFE



FFA OFFICERS — Glen Miles, Secretary; Garen Engquist, Vice President; Mr. Sandager, Adviser; Roland Stricklin, Sentinel; Leland Swenson, President; George Miron, Reporter; Peter Edstrom.

For a good many years now, the Ag department and the Forest Lake FFA Chapter, have played an important part in the lives of many boys who are interested in farming. The program also helps many adults in understanding new farming techniques.

Students begin their Ag program as they enter the ninth grade. Each year they Ag they are classified into groups such as Ag I, Ag II, Ag III, and Ag IV in the twelfth grade.

Ag I includes the study of the fundamentals of livestock management and the completion of an Ag project. Ag

II consists of the science of animal nutrition, composition of feed, and feeding livestock. Farm management is the main topic discussed in Ag III and Ag IV.

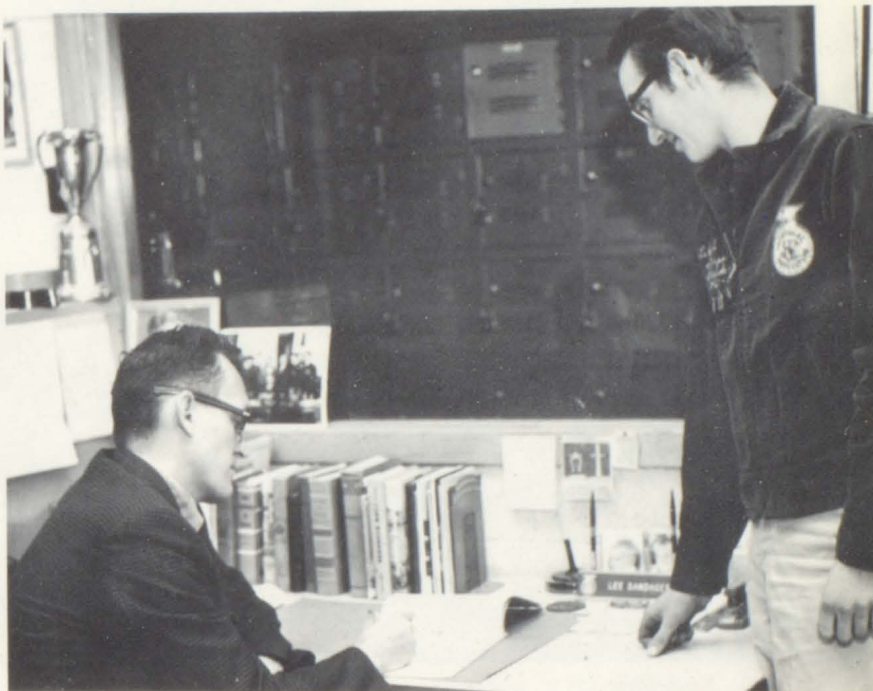
When a student enters the farm program in FL, he may join a club that coincides with Ag, known as the Future Farmers of America. Forest Lake's FFA Chapter has consistently won state and national recognition for its many projects and activities. It has, under the tutelage to Mr. Lee Sandager and Mr. Ray Kulbeck, merited gold, silver or bronze plaques for the past several years.

# LIFE OF THE PRESIDENT OF FFA

LELAND SWENSON, FFA PRESIDENT, CALLS A MEETING TO ORDER OF THE LOCAL FFA CHAPTER.



CONFERRING WITH HIS ADVISOR, MR. SANDAGER, THE PRESIDENT SEEKS ADVICE.



CLASSWORK TAKES UP MUCH OF THE PRESIDENT'S TIME.







JUNIOR FHA OFFICERS — Mary Taylor, Pat Corbett, Cheryl Miller, president; Bonnie Amundson, Diane Johnson, Cheryl Tennis.



SENIOR FHA OFFICERS — Sandy Kasma, Miss Arfstrom, advisor; Pam Boese, Audrey Engstrom, president; Marion Schroeder, Mary Maslowski.

## LOCAL FHA CHAPTER BOASTS STATE-LEVEL OFFICER

More active and larger than ever is the Forest Lake FHA Chapter which included both the junior and senior groups this year.

A major project this year found the group playing hostess chapter to the other chapters in District III at the Home Economics Career Workshop in November. A spring style show, a state fair booth, and a hospital project were other activities completed. They also toured the Betty Crocker Kitchens, attended district and state conventions, and had various parties with their brother organization, the FFA.

Audrey Engstrom, local chapter president, served as parliamentarian of the Minnesota FHA for 1961-1962. As all state officers are required to have home economics, Audrey carried out her project — Furthering Interest in Home Economics — by planning and conducting the Home Economics Career Workshop.

AUDREY ENGSTROM  
STATE PARLIAMENTARIAN







GAA OFFICERS — Charlotte Case, president; Wendee Forsberg, Sharon Case, Dele Fuglie, Judy Thurnbeck, Barb Glenn, Julie Jenuwine, Miss Weisbrod, advisor.

## BOWLING HOLDS WINTER FUN FOR GAA

EVERY TUESDAY NIGHT FOR EIGHT WEEKS GAA MEMBERS JOURNEYED TO THE NEW 'TOWN 'N COUNTRY LANES' TO PARTICIPATE IN THE FIRST ACTIVITY OF THE YEAR.



The three "V's," vim, vigor, and vitality, seem to be the GAA motto this year. Their first activity was bowling. New this year on the GAA program are Thursday evening meetings. The GAA'er's began their evening meetings with volleyball and basketball. Later on in the Spring, archery, tennis, and softball were enjoyed by the girls. The club had a new advisor this year, Miss Weisbrod, who is a graduate of Gustavus Adolphus. In addition to the original officers, sport heads were selected for each activity to organize teams and referee games. This addition to the executive committee took considerable worry out of the activity chairman's duties.

Bowling was held at the new Town 'n Country bowling lanes on Tuesday afternoons. Although, after the first game, scores were barely above 50, at the end of the seven-game series, scores were well over 100. Holding top honors for the sessions was Anne Jenuwine with a high game of 170. Highest average recorded was 130, which was recorded by Nanci Nordlund.





REIGNING HOMECOMING ROYALTY — King Ron Husnik and Queen Julie Moxness.

## '61 HOMECOMING LIVENED BY RE- VAMPED SCHEDULE

Homecoming 1961 festivities were begun with the coronation of Queen Julie Moxness and King Ron Husnik. Their attendants included Dele Fuglie, Peggy Lehman, Mary Mills, Kathy O'Brien, Jim Degendorfer, Dean Gardner, Chuck Patrin, and Dave Sandstrom. Queen of Snows Mary Ann Schwab was the guest of honor at the ceremony, while Mr. Russell Rose was master of ceremonies. The Thursday afternoon coronation was different this year in that it involved more people, such as majorettes, crown bearers, and flower girls. Thursday evening marked the beginning of the first evening parade in recent years. Following the parade there was a traditional pep-rally which included a bonfire. Immediately after the bonfire, grades 7 — 12 and alumni were invited to attend a soc-hop held in the high school gymnasium. Friday's activities included a pep fest in the afternoon and an alumni tea and the traditional football clash. During the half-time of the football game, the FLHS band presented the 1961 Homecoming queen and her attendants. Decorated with a fall theme, the grade school all-purpose room was the scene of the Homecoming dance. Leading the procession in a grand march were the homecoming royalty, concluding the festivities for 1961.

EXCITEDLY AWAITING THE SELECTION OF THE 1961 HC QUEEN ARE THE FIVE QUEEN CANDIDATES — Mary Mills, Dele Fuglie, Peggy Lehmann, Kathy O'Brien, Julie Moxness.





RECEIVING THE CROWN FROM THE QUEEN OF SNOWS IS THE 1961 HOMECOMING QUEEN JULIE MOXNESS — Linda Bothman, Mary Ann Schwab, Julie Moxness, Kevin Johnson, Linda Stuard.



TWO HC ATTENDANTS AND THE QUEEN OF SNOWS EXCHANGED COMMENTS ON THE CORONATION AT A TEA GIVEN IN HONOR OF THE HC ROYALTY — Kathy O'Brien, Dele Fuglie, Mary Ann Schwab (St. Paul Winter Carnival Queen).



FOR NOVELTY ON THE OCCASION FHA GIRLS DROVE THEIR CAR BACKWARDS THROUGH THE ENTIRE PARADE ROUTE.



IN ONE OF THE BRIGHTER MOMENTS OF THE HC GAME, JOHN SIMMONS APPLIES A CRUSHING BLOCK TO A CENTENNIAL DEFENDER WHILE RON HUSNIK SKIRTS THE END DURING THE SECOND QUARTER OF THE HC CLASH.





# SERVICE GROUPS . . . THEY ALSO SERVE

There are many service groups in FLHS that seldom receive a word of appreciation. These groups include the audio-visual aides, Concession Club, library and office help.

The role of the audio-visual members is very essential to the smooth operation of many school activities. The AV members under the direction of FL's audio-visual director, Mr. Fuhrman, operate and repair projectors used for classroom movies, lyceum programs, meetings, and

pep fests. Individuals from this group also help out with lighting for school plays.

The Concession Club is made up of seventh and eighth graders. These junior high students serve the public with the help of Mr. Buys, their advisor. The students are on hand to sell soft drinks, popcorn, and candy at all home games, for the Red Cross Drive, and when any other town organization calls upon them to help.



AUDIO-VISUAL HELP — Jim Onsager, Nick Ashbach, Dan Hair, Bill O'Hara, Ronald Johnston, John Lund, Julie Maher, Mike Houle, Sandra Eckvall, Joyce Lundberg, Donna Carlson, Mr. Fuhrman.

CONCESSION CLUB — Mr. Buys, Steve Tornell, Linda Judkins, Earl Buys, Mark Danford.







## SOPHOMORE ROYALTY

Newly elected Sophomore Royalty, Jerry Patrin and Chris Berger pose for their formal portrait shortly after being selected King and Queen of the Sophomore Class at the Valentine Dance, "La Capre De Cupide."

## F.F.A. CHAPTER SWEETHEART

Chosen this year's F.F.A. Chapter Sweetheart was Sandy Kasma. During the month of February the FFA Chapter chooses five candidates for the title of Chapter Sweetheart from its sister organization, the local F.H.A. Shortly after that selection is made, the winning girl receives a white FFA jacket at the joint party.

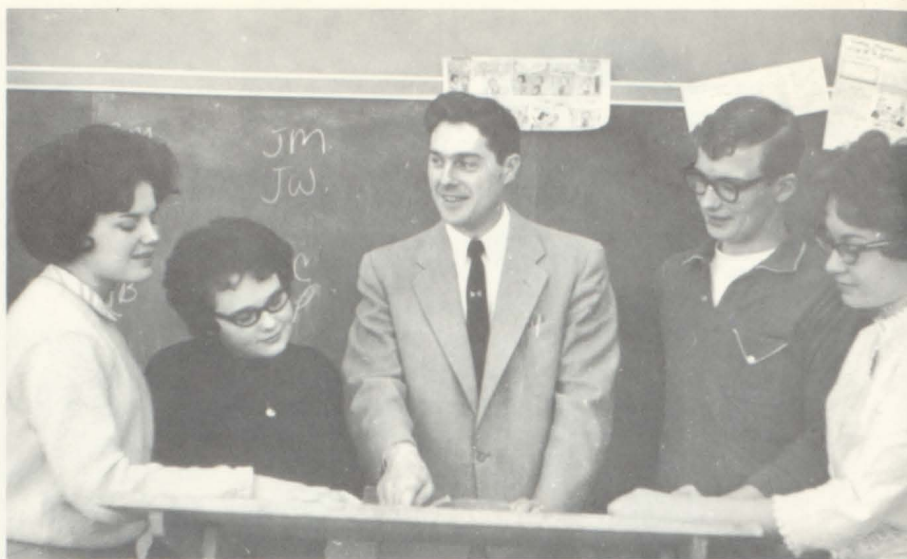




# DRAMATICS UNDER NEW REGIME AT FLHS

Under the direction of the dramatics coach, Mr. Fournier, the Thespians combined a live chicken, three convicts, a bottle of cognac, and a general store in French Guinea to present their first all-school play of the year, "My Three Angels."

The theme of this comedy is centered around the irony of good and evil with a cast of ten members. Taking the roles in this production were Kevin Johnson, Howard Neilsen, and Kirke Mayer, as the three convicts. Jerry Wright portrayed Felix Ducatel, Candy Proulx as his wife Emily, Sandy Kasma as their daughter Louise, Marion



THESPIAN OFFICERS — Candy Proulx, Susie Stuard, Mr. Fournier, advisor; Jerry Wright, Marilee Smith.

Schroeder as Mme. Parole, Ray Halverson as Henri Tochar, Peter Kauls as his nephew Paul, and Dave Sandstrom as the lieutenant.

Heading the Thespian Troupe this year were Jerry Wright as president, Sue Stuard, clerk; Merilee Smith, secretary; and Candy Proulx, treasurer.



THE RESPONSIBILITIES OF PRESENTING THE ALL SCHOOL PLAYS, FOR THE MOST PART, FALL ON THE SHOULDERS OF THESE THESPIAN MEMBERS.





LOUISE DUCATEL DRINKS A  
TOAST TO "MY THREE ANGELS."  
— Kevin Johnson, Kirke Mayer,  
Howard Neilsen, Sandy Kasma,  
Candy Proulx, Jerry Wright.



"BUT MADAME, H<sub>2</sub>O DOES  
MEAN COGNAC!" — Howard  
Neilsen, Kevin Johnson, Marian  
Schroeder.



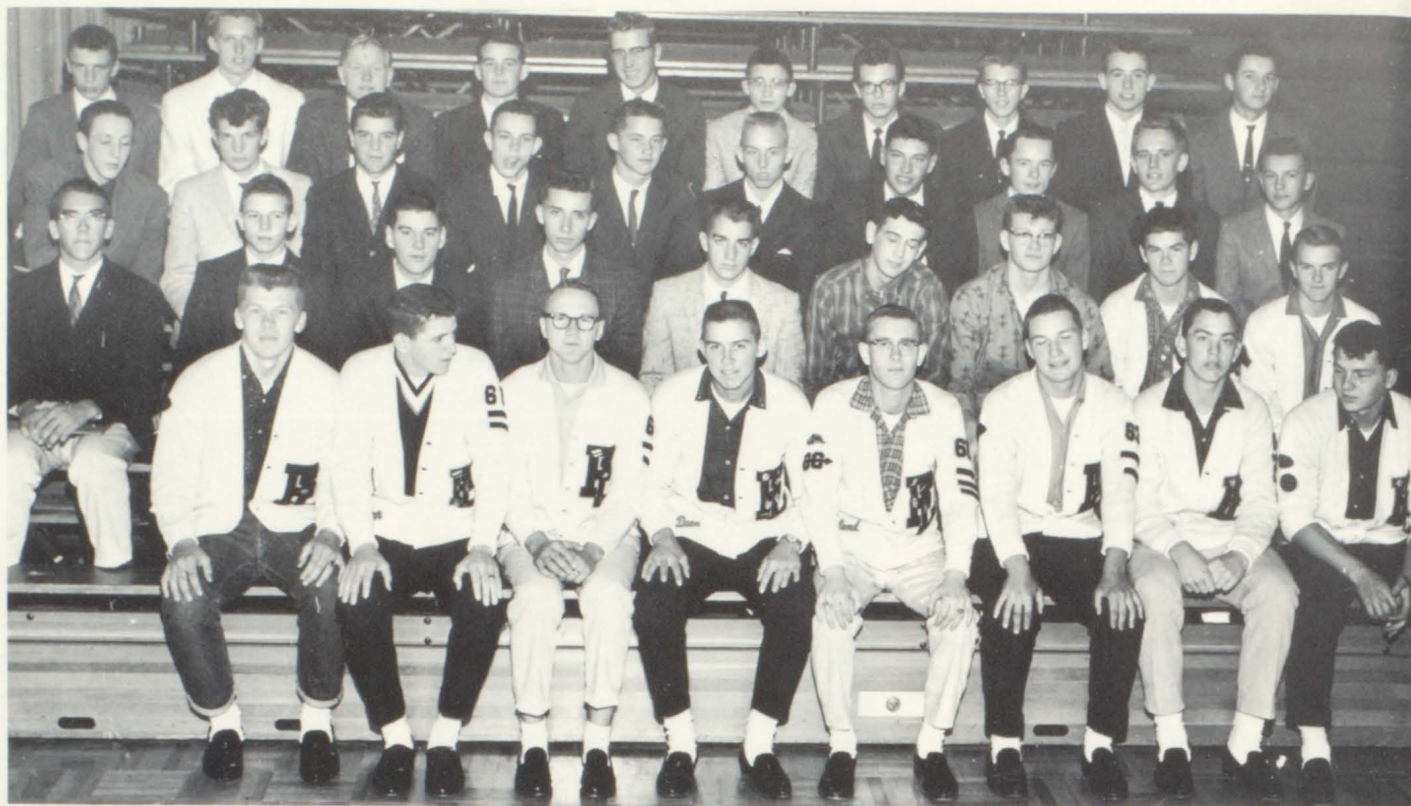
"WHO ASKED FOR YOUR  
OPINION??" — Kirke Mayer, Ke-  
vin Johnson, Howard Neilsen,  
Ray Halverson, Sandy Kasma.



ALFRED LOOKS FOR ADOLF,  
HIS PET SNAKE, TO PERFORM  
A SERVICE FOR HIM — Candy  
Proulx, Kevin Johnson, Kirke  
Mayer, Howard Neilsen.







ROW 1 — Rodney Erickson, Ken MacLean, Kenn Sahlin, president; Dean Gardner, vice president; Roland Stricklin, secretary-treasure; John Simmons, Dick Norton, Chuck Patrin. ROW 2 — Mike Dubois, Andy Kauls, Don Anderson, Ken Peterson, Gary Miller, Dave Sandstrom, Jim Degendorfer, Larry Houle, Chuck Patrin. ROW 3 —

Marty Whitney, Jerry Lundberg, Steve Dufresne, Peter Kauls, Duane Gustafson, Bob Swenson, Ron Husnik, Dave Knapp, Loren Nickelson, Peter Edstrom. ROW 4 — Randy Schneider, Don Lindgren, Howard Neilson, Jim Yale, Fred Beeksm, Don Peterson, Kirke Meyer, Gary Hauble, Jim Taylor, Jerry Patrin.

## LETTERMEN'S CLUB GROWS

The Lettermen's Club, an organization made up of athletes who have lettered in sports, has thirty-seven members this year. Included in its activities were revising its constitution, ordering patches for club jackets, ushering for basketball and wrestling matches, and holding parent nights for most sports as in past years. Besides being a service group, the club is also a social group with its annual Christmas dance and Athletic Banquet in the spring. At the banquet, outstanding athletes are named for each high school sport.

The officers elected for the year included President Kenn Sahlin; Vice-President Dean Gardner; and Secretary-Treasure Roland Stricklin.





# SPORTS







CROSS-COUNTRY TEAM — **KNEELING** — Don Peterson, Gary Hauble, Loren Johnson, Larry Houle, Roland Stricklin. **STANDING** — Coach

Arthur Palmer, Loren Nickelson, Dick Norton, Dale Kolbow, Don Lindgren, Ken Peterson, Ken MacLean.

Coach Palmer and FL's state harrier Ken MacLean.



## RUNNERS CONTINUE DISTRICT DOMINANCE

With a perfect score of 15, the Forest Lake cross country squad swept to win their fourth District 25 championship. Traveling to the regional tournament, the harriers placed fourth behind teams from Hibbing, Duluth East, and Duluth Central. By placing sixth in this meet with a time of nine minutes flat, Ken MacLean was eligible to go on to the state tournament.

During regular seasonal play under the leadership of Coach Arthur Palmer, the teams defeated by the Rangers included Pine City, Centennial, and Brooklyn Center. Scoring behind Pine City and Ellsworth, the local runners placed second in their two triangular meets of the season. Brooklyn Center, Osseo, and Spring Lake Park cross country squads overpowered the Rangers, who placed third of eight with a score of 78 in the Skyline Conference meet following Osseo and Spring Lake Park.



# RANGER DEBUT IN SKYLINE LOOP ROCKY'

Forest Lake's young grid squad this year experienced a rocky debut in the power-laden Skyline Conference. Unimpressed by the Rangers' superlative slate of wins against their old East Central foes, the new loop teams lashed the locals repeatedly.

Coach Hanson's charges were able to mount sufficient offensive strength only in the contests against Fridley and lowly St. Francis. Time and again solid performance by individuals failed to ignite the Ranger attack. Adding to the Rangers' troubles were minor injuries

such as caused the loss of Dean Gardner midway in the second period of the Mahtomedi game, and the removal of star-halfback Ron Husnik in the final minutes of the Osseo season closer.

Though they placed none on the offensive All-Conference squad, Forest Lake saw Junior John Simmons named to the defensive unit as a linebacker. Honorable mentions were also accorded to FL Seniors Kenn Sahlin, Ron Husnik, and Dean Gardner, and Juniors Gary Miller and Jim Yale.

## SCORES

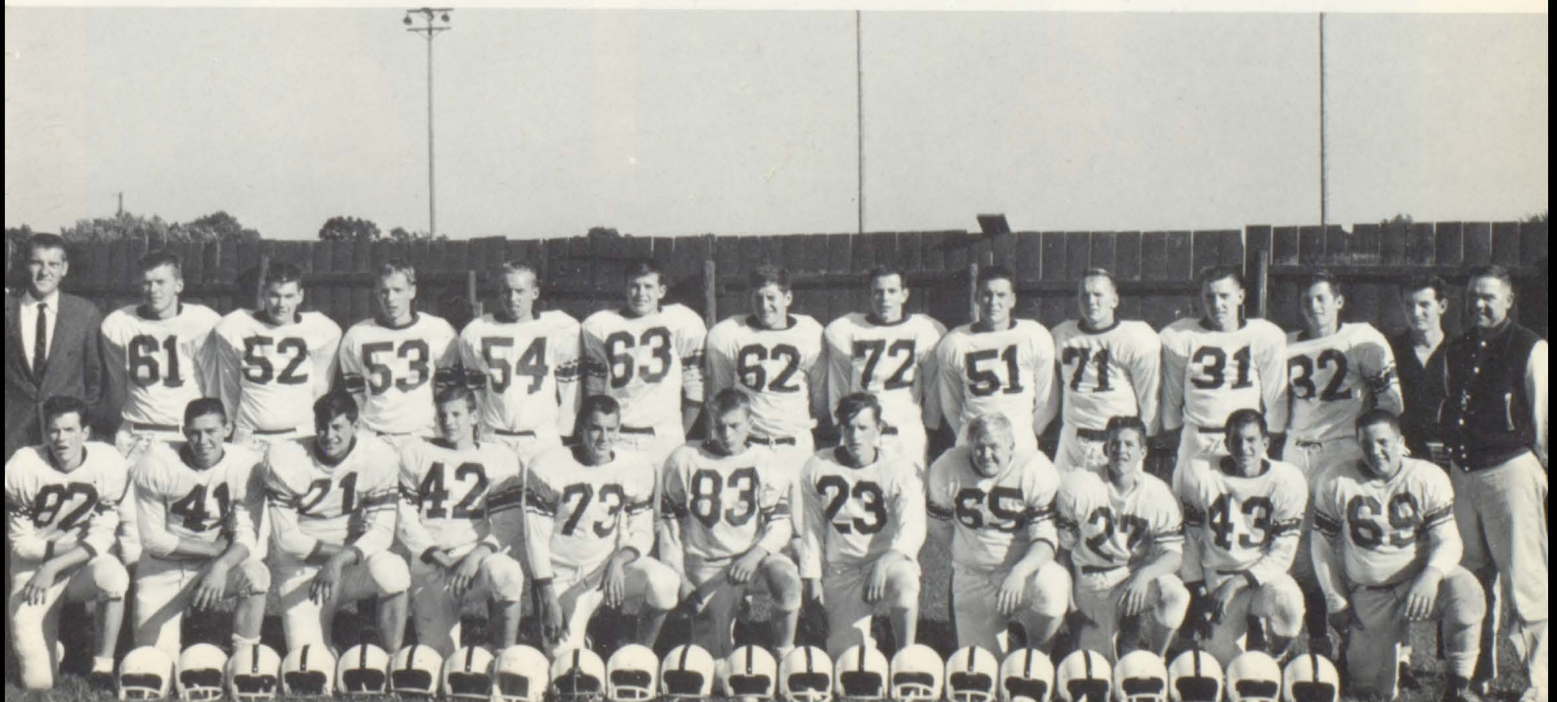
Chisago City .....	20	FL .....	0
Spring Lake Park .....	42	FL .....	0
Fridley .....	6	FL .....	13
Mahtomedi .....	45	FL .....	0
St. Paul Park .....	35	FL .....	0
Centennial .....	13	FL .....	0
St. Francis .....	14	FL .....	31
Brooklyn Center .....	12	FL .....	0
Osseo .....	42	FL .....	0



Coach Hanson explains a point to the younger members of the football squad — Jack Fashbaugh, Jim Priener, John O'Brien, Darrel Severson, Coach Hanson.

'A' TEAM FOOTBALL SQUAD — ROW 1 — Kirke Meyer, Dean Gardner, Ronald Husnik, Andy Kauls, Gary Miller, Randy Schneider, Dave Knapp, Howard Neilson, Richard Gabrick, Thomas Schlavin, James Fehrman. ROW 2 — Coach John Schumacher, Rodney Erickson, Don

Anderson, Bruce Johnson, Robert Swanson, Jim Yale, Ernest Switzer, Peter Kauls, John Simmons, Kenn Sahlin, Jim Taylor, Duane Gustafson, Student Manager Jerry Patrin, Coach Kenneth Hanson.



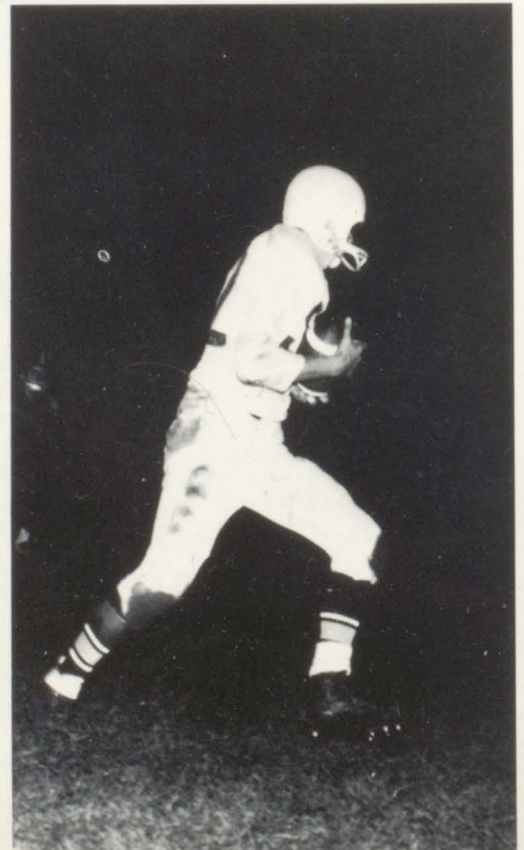




Tom Schlavin (43) and Duane Gustafson (32) team up to spill a Chief attacker while Howie Nielson (65) and Jim Yale (63) approach to help out.

Don Anderson's away!

Ranger back John Simmons (51) is caught from behind by Centennial defenders in the HC tilt as Don Anderson (52) comes up from the flank.







Ron Husnik and other FL gridsters stop a Centennial Chief during the third quarter of the '61 Homecoming game.

### 'B' SQUAD FOOTBALL SCORES

Spring Lake Park . . . . 24	FL . . . . . 0	St. Paul Park . . . . . 0	FL . . . . . 20
Fridley . . . . . 6	FL . . . . . 0	St. Francis . . . . . 0	FL . . . . . 21
Chisago City . . . . . 6	FL . . . . . 0	Osseo . . . . . 19	FL . . . . . 0

'B' SQUAD FOOTBALL TEAM — **FRONT ROW** — Jack Fashbaugh, Jerry Lundberg, John Moxness, Nick Waldoch, Craig Moen, Jim Fehrman, Dana Johnson, Rodney Amundson, Jim Sederholm, Mike Fehrman, Mike Peloquin, Dave Kleinendorst, Tom Barton. **ROW 2** — Randy Schneider, Steve Dufresne, Jim Morrison, Dave Conley, Dick

Gabrick, Dan Chaussee, John Morrison, Dave Zak, Tim Armstrong, Bob Engquist, Alden Booren, Tom Schlavin, Don Morehead, Coach LeRoy Stang. **ROW 3** — Don Johnson, Dick Haluptzok, Mike Vogel, Tom Gay, Tom O'Donnell, Greg Linnell, Bill Franta, Darrel Severson, Pat Casey, John O'Brien, Jim Berggren, Myron Fladland, Bruce Johnson.







COACH TOM MATTESON ADVISES CO-CAPTAINS CHUCK AVERY AND LARRY HOULE BEFORE AN IMPORTANT WRESTLING MEET.

## AVERY, HOULE BIG POINT GETTERS FOR RANGERS

Youth and inexperience went to the wrestling wars for FLHS this year. Only four seniors were represented on a squad largely composed of juniors and sophomores.

Led by Coaches Tom Matteson and Frank Terry, the wrestling team won two and lost nine meets. Forest Lake placed third in the Forest Lake Invitational. Although local grapplers won comparatively few meets, they lost many by only a few points. Mahtomedi topped the Rangers by a 24-23 margin; Osseo defeated the team 24-17. Forest Lake then came back to tie St. Paul Park at 22-22. In the Conference Tournament the Rangers placed ninth out of nineteen participating teams.

Outstanding members of the squad were Paul Houle, who won sixteen out of eighteen matches, and Chuck Avery, who won eleven out of thirteen matches.

The FL squad attended the Regional Meet at Grand Rapids on February 24. They succeeded in bringing home one second place, two third places, and two fourth place honors. Paul Houle won a second place in the ninety-five pound class which Forest Lake has won for four consecutive years.

The 'B' squad experienced a successful season. The junior matmen won five matches and lost three. With this record and the fact that the 'A' squad is made up of juniors and sophomores, prospects for the coming year look bright.

### SCORES

FL . . . . 16	Centennial . . . . .	35
FL . . . . 8	Grand Rapids . . . . .	42
FL . . . . 11	Fridley . . . . .	31
FL . . . . 48	Lindstrom . . . . .	7
FL . . . . 17	Osseo . . . . .	24
FL . . . . 18	St. Francis . . . . .	32
FL . . . . 22	St. Paul Park . . . . .	22
FL . . . . 34	North Branch . . . . .	20
FL . . . . 6	Spring Lake Park . . . . .	42
FL . . . . 17	Brooklyn Center . . . . .	27

'A' SQUAD WRESTLERS — ROW 1 — Chuck Avery, Larry Houle. ROW 2 — Robert Erickson, Irvin Harper, Kirke Mayer, Steve Dufresne, Jay Urman, Wayne Nelson, Philip Edstrom. ROW 3 — Mr. Terry,

Nick Waldoch, Pete Edstrom, Jim Rehbein, Jerry Lundberg, Dick Cruse, Michael DuBois, Ray Quigley, Randy Schneider, Howard Neilson, Paul Houle, Mr. Matteson.

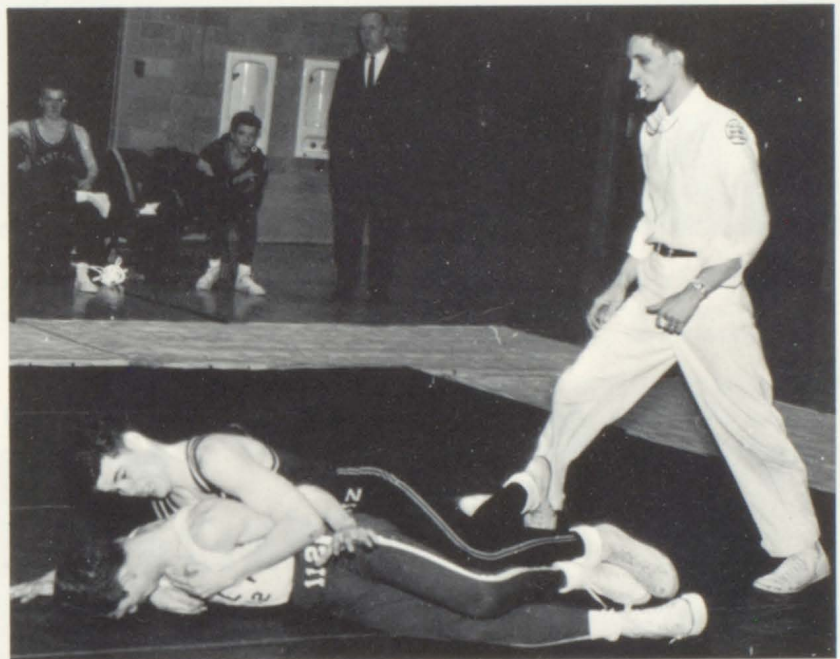




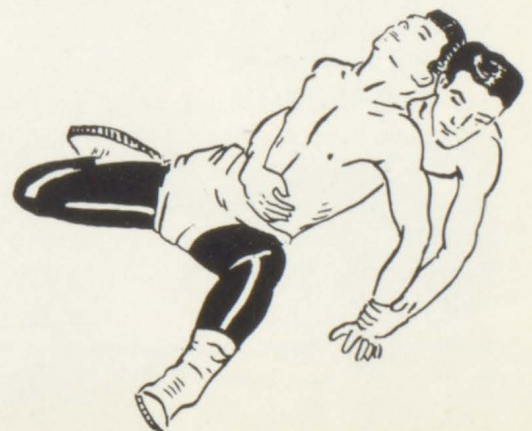


CHUCK AVERY COUNTERS A SIT OUT  
ESCAPE TO A SPRING LAKE PARK  
WRESTLER.

CO-CAPTAIN LARRY HOULE WORKS A BREAK  
DOWN INTO A PINNING COMBINATION IN A  
CONFERENCE MEET.



A LEG DROP TAKE DOWN WITH A CROSS FACE  
IS APPLIED BY FL WRESTLER JIM REHBEIN.







'A' BASKETBALL SQUAD — **KNEELING** — Andy Kauls, Bob Swanson, Don Moorhead, Ron Husnik, Dean Gardner, Jerry Patrin, John Simmons. **STANDING** — Coach Conley, Jim Yale, Ken Peterson, Don

Lindgren, Ken MacLean, Dick Norton, Don Anderson. Student Managers — Peter Kauls, Bob Engquist, Layton Cohoes.

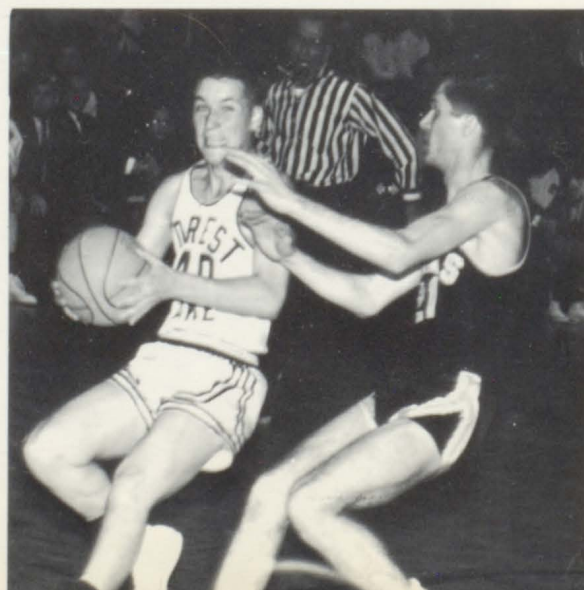
## RANGERS REBOUND IN CONFERENCE CHASE

After losing last year's starting five from the varsity team, Coach Jack Conley undertook a momentous task of building up this year's cagers and led the team to fourth place in their second year of Sky-line Conference play. Leading the team in scoring during the season were Co-captains Dick Norton and Dean Gardner. Top rebounder was Ron Husnik.

After losing the first two games to first place Spring Lake Park and second place Osseo, the Rangers shaped-up to wallop the next four opponents. The FL cagers then experienced a rocky stage in their road as it seemed to be "touch and go" for the next six consecutive games with the Rangers winning but two. However, the Rangers scored a successful comeback by winning their last six games of the regular season and earned a fourth place berth in conference standings.

Although the Rangers no longer compete in the old East Central Conference, they took part in District 25 play-offs beginning the week of February 27. There were no sub-district play-offs this year because of too many teams and games involved.

JUNIOR STARTER JOHN SIMMONS BRINGS THE BALL DOWN COURT TO FL'S BASKET.







DURING A TENSE MOMENT OF A CONFERENCE GAME, THE RANGERS FIGHT FOR POSSESSION OF THE BALL.



HEAD BASKETBALL COACH JACK CONLEY

### SCORES

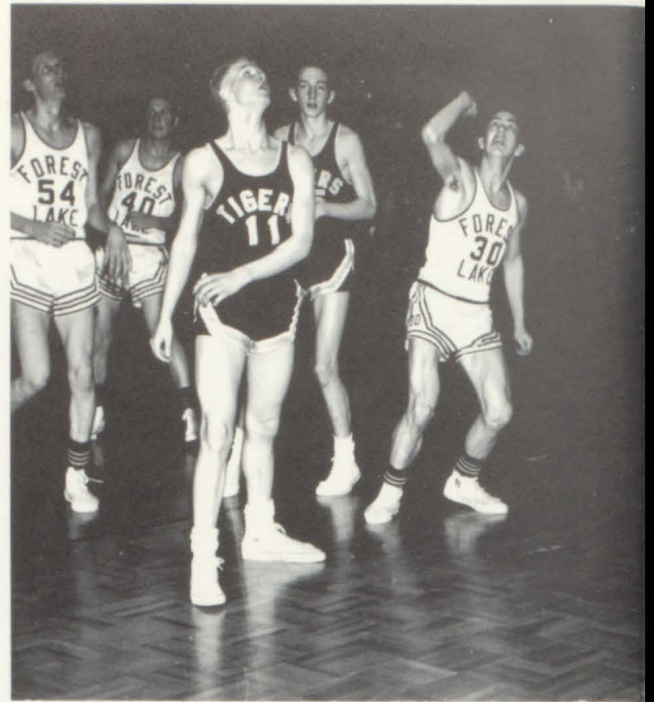
FL	35	Spring Lake Park	48
FL	54	Osseo	61
FL	68	Brooklyn Center	27
FL	55	Centennial	41
FL	55	St. Francis	45
FL	51	Milaca	32
FL	58	Braham	76
FL	59	Fridley	35
FL	58	St. Paul Park	72
FL	50	Mahtomedi	31
FL	36	Spring Lake Park	44
FL	51	Osseo	56
FL	54	St. Francis	43
FL	71	Brooklyn Center	49
FL	60	St. Paul Park	54
FL	66	Centennial	43
FL	48	Fridley	46
FL	57	Mahtomedi	38







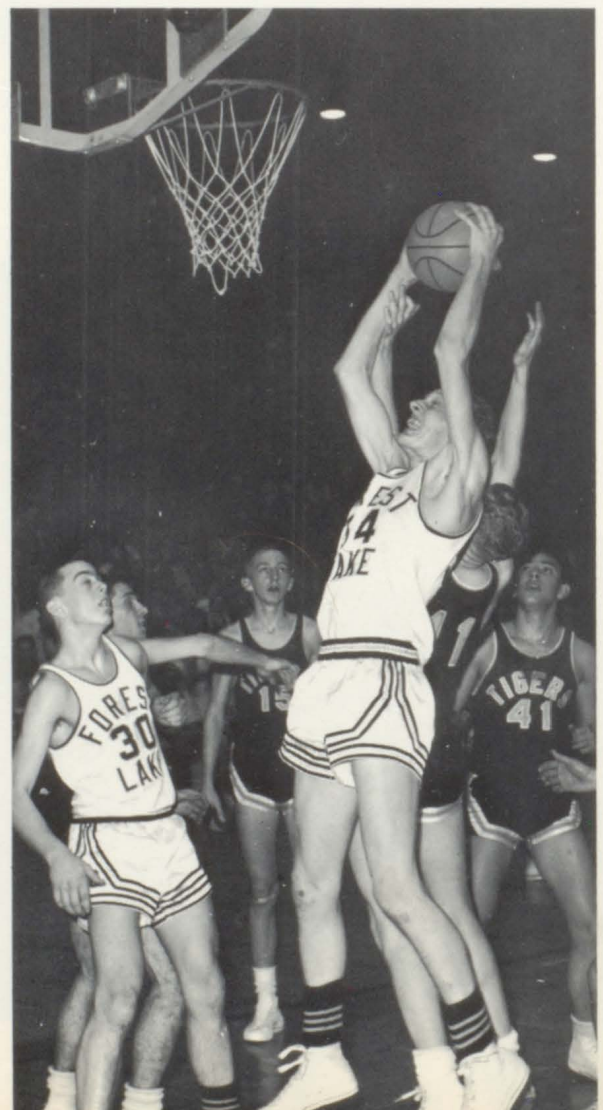
CO-CAPTAINS DEAN GARDNER AND DICK NORTON ARE SHOWN A NEW DEFENSIVE PLAY BY COACH JACK CONLEY.



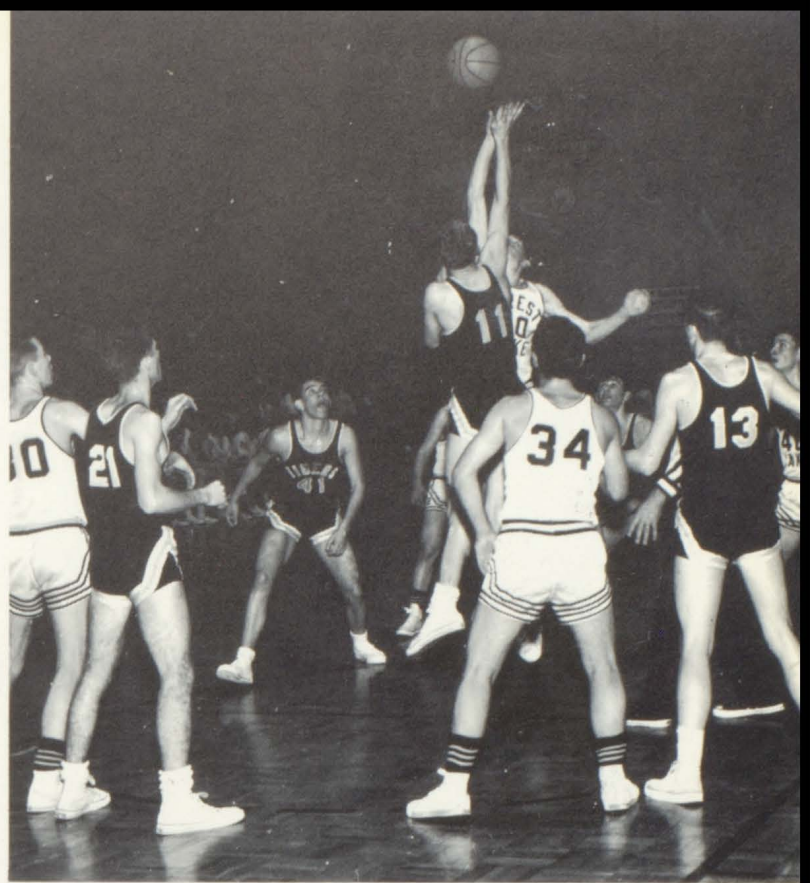
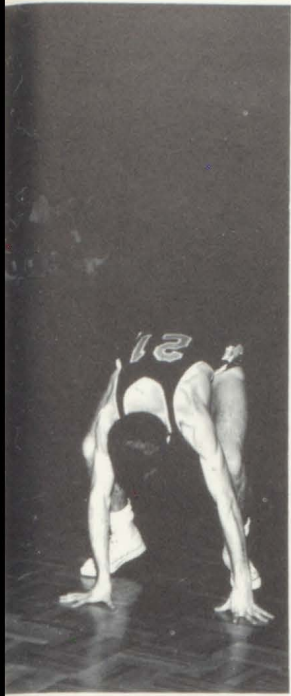
"HEY, WHERE DID IT GO?"

DON LINDGREN REBOUNDS!

RON HUSNIK AIDS DON LINDGREN IN REBOUNDING FOR THE RANGERS.







"GET THAT TIP!"

'B' SQUAD — **KNEELING** — John Sullivan, Don Peterson, Don Moorhead, Dana Johnson, Phil Houle, Jim Lindberg, Barton Johnson, Bob Engquist, Greg Benson. **STANDING** — Coach John Schu-

macher, Tom Gay, Bob Berggren, Bruce Johnson, David Sandberg, Pat Casey, Jim Berggren, Ron Wells, Bill Franta, Darrell Severson.







'A' and 'B' squad cheerleaders combine to make an 'FL' formation during the school song.

## ELEVEN LEADERS CHEER TEAMS ON!

'A' Squad — Delores Johnson, Diane Daninger, Peggy Lehmann,

Hours and hours of diligent practice go into the cheerleaders' appearances at pep-fests, wrestling meets, basketball and football games. Practice is started in July and is continued once a week throughout the sports season.

For the first time at FLHS, six 'A' squad cheerleaders were used instead of the previous five. This meant that many of the cheers had to be reworded and changed. Also, many new cheers replaced the old. Two seniors, two juniors, and two sophomores made up the 'A' squad cheerleaders. The 'B' squad consisted of five junior-high girls.

Over the past year the cheerleaders have helped greatly to spark school spirit. Much more cheering could be heard at the games, home and away, and the general team support was much better.







'B' Squad — Linda Martinson, Mara Kauls, Candy Randall, Toni Kunshier, Peggy Witham.

Judy Thurnbeck, Barb Glenn, Marie Tennis.



"Let's Go Rangers, Let's Go!!!"





# UNDERCLASSMEN WATCH,





# PARTICIPATE TOO!





# JUNIORS, SOPHS AWAIT THEIR YEARS



HOME ROOM 309 — FRONT ROW — Judy Granholm, Wink Peterson, Carol Larson, Mary Montain, Carol Halley, Joan Bond. ROW 2 — Sharon Wallenberg, Judie Martz, Pat Christensen, Cheryl Moody, Sue Gabrick, Gerry Walquist. ROW 3 — Ray Nelson, Vince Monson, Ralph Hyde, Richard Moschkau, Tom Berry, Loren Nickelson, Esther Vanderpas.



HOME ROOM 133 — FRONT ROW — Mary Lou Ellefson, Nancie Nordlund, Nancy Dickey, Judy Bergum, Deanna Booren, Mike Allen, Connie Evans, Paula Anderson. ROW 2 — Diane Daninger, Paulette Shelander, Lynda Fingal, Audrey Hesse, Christine Berger, Sandy Waldo, Karen Berntson. ROW 3 — Juanita Duraine, Carol Abbott, Norma Danks, Anne Jenuwine, Sharon Larson, Sue Neske, Barb Glenn. ROW 4 — Peter Kauls, Mike Schatz, Charles Hammer, Gary Poland, Dan Witham, Don Larson, Karen Houle, Dave Fakler.

HOME ROOM 301 — FRONT ROW — Kay Johnson, Julie Jenuwine, Violet Carter, Hilda Miller, Jane Makkylla, Darlene Fraley, Viola Duchatel. ROW 2 — Kirke Mayer, Alana Gilbertson, Patty Lichtscheidl, Kashie Case, Kathy Erickson, Carol Oelke, Charlotte DeLong.







HOME ROOM 223 — **FRONT ROW** — Rita Lutz, Bonnie Kendrick, Margie Selleck, Bev Kunshier, Sandy Hewson, Donna Mueller, Judy Pitcher, Gaylon Swenson. **ROW 2** — Jennifer Langdon, Helen Kammerer, Deloris Carlson, Craig Moen, Audrey Timm, Donna Storkan, Mildred Jensen. **ROW 3** — John Sullivan, Tom Wegleitner, Kathleen Hauer, Mary Wilson, Marsha Yost, Laura Olson, Valoris Larson. **ROW 4** — Robert Berggren, Ken Swanson, Mary Jo Vadnais, Keith Beyer, Greg Linnell, Richard Sandstrom, Bruce Ramsden.

HOME ROOM 302 and 313 — **FRONT ROW** — Ron Ramsden, Clifford Peterson, Roger Lindell, Barb Balzart, Mary Maslowski, Carolyn Bowman, Mary Heisler, Joan Carlson. **ROW 2** — Bob Mattson, Dick Tossey, Alan Maranville, Dave Degendorfer, Dave Bezek, Harry Eckdahl, Doug Anderson, John Miron.



HOME ROOM 221 — **FRONT ROW** — Candy Proulx, Sandra Ashbach, Jamie Frye, Alice Anderson, Deirdre Lellman, Roberta Stuard, Dianne Drummond, Mary Osterbauer, Dorthy Boyer. **ROW 2** — Richard Lunde, JoAnn Birr, Diane Branum, Darlene Benson, Virginia Steltzner, Sandy Kasma, Sandra Marier, Mary Bontjes, Shirley Kost, Diane Winch. **ROW 3** — Don Anderson, Robert Swanson, Steven Miller, Leslie Grubbs, Mike Shelander, Arne Geslin, John Hiland, Robert Dupont, Barry Farver.



HOME ROOM 306 — **FRONT ROW** — Carolyn Hawkinson, Naomi Moody, Cliff Frandle, Cheryl Rehbein, Kathy Sedlacek, Marie Tennis, Karen Sanders, Jim Weseman. **ROW 2** — Bonita Swanson, Diann Metkowski, Glen Tornell, Harold Thomas, Carlyle Bowman, Ray Broadbent, Susan Taylor, Virginia Lund, Karen Nielsen. **ROW 3** — Steve Dufresne, Dick Cruse, Randy Schneider, Jerry Lundberg, Barb Taurman, Jean Wulf, D. J. Morehead, Barb Anderson, Diane Lang.





HOME ROOM 110 and 111 — FRONT ROW — Grace Anderson, Elaine Erickson, Carol Zak, Sharon Yost, Sue Renard, Fayne Rasmussen. ROW 2 — Ed Schroeder, Arnold Pirsig, Dennis Strandberg, John Cournoyer, Lee Schmidt, Mike Ott, Gene Anderson. ROW 3 — Ron Shogren, Jim Preiner, Wayne Houle.



HOME ROOM 219 — FRONT ROW — Joan Petzka, Kathy Ekbal, Cheryl Myer, Cathy Lawler, Karen Elmstrom, Dona Alfveby, Sharyl Allen, Kathy Balzart, Pat Gilbert. ROW 2 — Phil Houle, Jack Fashbaugh, Irvin Harper, Gary Dupre, Chuck Dale, Randy Frazier, Robert Anderson, Jim Fehrman, Mike Waltz, Barton Johnson. ROW 3 — Dale Kolbow, Art Boese, Chuck Dupont, Jerry Patrin, Alan Oberg, Bill Hammer, Don Peterson, Steve Anderson, Dan Lundgren.

HOME ROOM 117 — FRONT ROW — Terry Muellner, David Goss, John Lund, Thomas Schlavin, Bill Fenton, Michael Houle, Paul Houle, Dennis Hansen. ROW 2 — Rick Palmer, Richard LeRoux, Myron Fladland, John Preiner, Jerome Weiss, William Marlette, Andy Istvanovich, Wilfred Riopel, Bruce Houle.



HOME ROOM 317 — FRONT ROW — Donna Bond, Tom Sahlin, Allan Stringer, Laurel Cakebread, Vickie Stanley, Cheryl Jonason, Char Pepin, Nich Waldoch, Linda Owens. ROW 2 — Jim Morrison, Leland Sterling, James Lindberg, Don Stanek, Judy Larson, Julie Maher, Linda Kleinendorst, Kathy Trulen, Colleene Lawler. ROW 3 — Bruce Johnson, Ron Wells, Bob Thurnbeck, Doug Holcomb, Bernice Hartz, Dianna Ashbach, Arlys Vanderpass, Jan Haluptzok, Janet Thorp.





# JUNIOR HIGH ENROLLMENT GOES UP

HOME ROOM 109 — FRONT ROW — Rodney Amundson, Gordon Marcott, Dawn Larson, Judy Ann Westby, Shirley Onasch, Barbara Thorp, Sue Dalin, Lynn Doyle, Bonnie Amundson. ROW 2 — Judy Branjord, Mary Cruse, Debby Stehr, Marlene Miller, Mary Taylor, Julena Lind, Sandy Lindin, Barb Barrett, Linda Martinson, Jenine Morstad. ROW 3 — Philip Mulvihill, Steve Voss, Jim Granger, Dianne Johnson, Cindy Fors, Connie Carlson, Sandy Johnson, Jackie Scofield, Candy Randall. ROW 4 — Pat Corbett, Mike Johnson, Raymond Bargabus, Susan Lane, Joanne Vogel, Marlene Magnuson, Gail Aspinwall, Dale Monson, David Kleinendorst, Larry Gilbertson.



HOME ROOM 109 — FRONT ROW — Karin Mulvihill, Chris Thomson, Debra Tuominen, Donna Fraley, Kathleen Pelquin, Marsha Stolberg, Rodney Martinson, Layton Cohoes. ROW 2 — Cheryl Tennis, Linda Boehm, Cheryle Matheson, Pat Schroeder, Gail Linnell, Kris Heisler, Kathy Pepin, Lynda Stuard, Pete Berven. ROW 3 — Paul Havens, Bob Engquist, Allan Revier, Lee Proulx, Jerry Matheson, Mike Beckman, Jim Hegler, Tim Armstrong, Mike Conley, Roland Johnson. ROW 4 — Dave Guertin, Charles Klinefelter, Randy Sovia, Kathryn Bargabus, Kristine Johnson, Karen Matheson, Linda Swanson, Joan Hauble, Ray Ensrud.



HOME ROOM 202 — FRONT ROW — Rita Rowell, Gail Stanley, Kathy Schmidt, Linda Ramsden, Francis Cournoyer, Larry Nutter, Gerald Larson, Diane Dufresne, Sharon Radtke. ROW 2 — Mara Kauls, Kay Halverson, Donna Johnson, Judy Sigler, Jerry Timm, Jerry Vogel, Alden Booren, David Nelson, Mike Fehrman. ROW 3 — Phil Ames, Darrel Severson, Steve Carlson, Rich Mollinger, Tim Ott, Ron Rehbein, Duane Faymoville, John Boettcher, Joan Karsky.





HOME ROOM 115 — FRONT ROW — Sarah Olsen, Pamela Martinson, Curtis Larson, Bruce Minder, Mary Fehrman, Colleen LeRoux, Robert Pirsig, Arnold Scheel, Larry Guertin. ROW 2 — Mary Berggren, Blenda Dougherty, Kathleen West, Linda Shelander, Maria Haas, Tom Wonick, Doug Johnson, Marlys Cakebread, Roberta Rousselow. ROW 3 — Lynn Bergerson, Steven Fitch, Lee Carlson, Dan Zins, Bernard Larson, James Robinson, Cynthia Houle, Pat Keller, Pamela Thiltgen.



AG HOME ROOM — FRONT ROW — Jerry F. Carlson, Larry Palmer, William Lauer, Ralph Knapp, Phil Isaacson, Eugene Houle. ROW 2 — Steve Petersen, Dick Haluptzok, Gerald Aljets, Donald Smith, Robert Lee Thurnbeck, Dave Kaley, Michael Peloquin.

HOME ROOM 127 — FRONT ROW — John Morrison, Peggi Evans, Elaine Sanders, Pat Saenger, Dawn Good, Terry Lawrence. ROW 2 — David Gulasch, Donna Carlson, Claire Solem, Linda Berntson, Donna Deskins, Sharon Solomon. ROW 3 — Dave Sandberg, Bob Cockburn, George Haas, Alvin Selleck, Kathy Raeder, Dave Conley.



HOME ROOM 225 — FRONT ROW — Donna Johnson, Shirley Keller, Peggy Witham, Robin Wyman, Colleen Fraley, Burton Hanson, Mike Gabrick, Richard Laurie. ROW 2 — Bob Wendt, Sheryl Miller, John Peterson, Leo Mueller, Ron Bowman, Cheryl Cardinal, Sibyl Everson. ROW 3 — Bill Franta, Dana Johnson, Ronald Buske, John O'Brien, Mike Erickson, Steve Eckerstrom, Dave DeLong, Judy Nicolai.





HOME ROOM 107 — FRONT ROW — Steve Parenteau, John Moxness, Darlene Madsen, Barbara Caron, Ruth Montain, Robert Carlson, Judy Bain. ROW 2 — Dan Hair, Linda Judkins, Peggy Hvinden, Linda Pearson, Judy Mudgett, Linnea Pederson, Arlo Shelander. ROW 3 — Sandra Ekvall, Catherine Carlisle, Theresa Henderson, Luvern Cornelius, Murray Marlette, Gary Carlson, Jim Bushinger. ROW 4 — Tom Gay, Gary Eisenhut, Harold Robinson, Kenneth Ebel, Duane G. Danks, John Wiezycki, Terry Beyer, Cindy Carlson.



HOME ROOM 217 — FRONT ROW — Bonnie Ahlm, Bunny Thomas, Nancy Anderson, Joan Larson, Jane Bergerson, Marlene Erickson. ROW 2 — Sharon Cakebread, Helen Gould, Annette Ersfeld, Darlene Johansen, John Baudler, Phil Edstrom, Robert Nordin. ROW 3 — Alberta Servaty, Jim Wahlberg, Greg Boehm, Dough Storkan, Tom Barton, Ken Quigley, Jim Lang. ROW 4 — Jim Berggren, Pat Casey, Tom O'Donnell, Greg Benson, Jim Sederholm, Nancy Heller, Janet Wiberg, Judy Dehmer.



HOME ROOM 129 — FRONT ROW — Joe Dehmer, Kathy Mills, Burton Wiberg, Eldred Bowman, Leslie Kment, Hurly Morris, Michael Niemczyk, Fred Kost. ROW 2 — Lorna Shodahl, Dan Sullivan, John Duraine, Diane Wilcoxon, Dennis Sampson, Lester Lind, Wayne Skoglund, Tom Gaetz. ROW 3 — Penny Berggren, Gene Hiland, Billy Michael, Beverly Hanson, Mary Houle, Jack Livings, Jerry Peterson, Sandy Anderson, Penny Carpenter.



HOME ROOM 105 — FRONT ROW — Jerry Larson, Bob Westby, Bob Pepin, Bill Anderson, Danny McPhail, Ronald Istvanovich, Nancy Mehlhoff, Ken Carpenter. ROW 2 — Gwen Hering, Mary Anderson, Sharon Kleinendorst, Darlene Wilcoxon, Susan LeVesseur, JoAnn Moxness, John Nickelson. ROW 3 — Jack Duncan, Pat Morley, Bruce Hewson, Don Flesvig, Mary Lou Decker, Lillie Hanke, Roberta Sanftner. ROW 4 — Doug Harper, Mike Loren, Walter Stolzman, Karen Berggren, Sharon Cameron, Patricia Pojanowski, Donald Bezek, Tom Konobeck.



**HOME ROOM 104 — FRONT ROW** — Donald Sandgren, Sandy Makyla, Bill Elmstrom, Harlan Madsen, Denise Bakeberg, Pamela Alcock, Joyce Engstrom. **ROW 2** — Diana Jorgenson, Mary Valenty, Jay Entwistle, Richard Albrecht, Janice Radden, Donna Hauer, Ralph DeLong. **ROW 3** — Walter Peterson, George Osgood, Barbara Palmer, Mary Jo Miron, Harold Haluptzok, Mike Bergum, Gene Lallier. **ROW 4** — David Spry, Eileen Wright, Kathy Christman, Roger Muellner, Patty Boehm, Julia Lawrence, Donna Swanson, Suzette Peterson.



**HOME ROOM 108 — FRONT ROW** — Tom Anderson, Dan Peloquin, Pat DuLac, Kermit Beyer, Charles Sterling, Daryl Rehbine, Lana Allen, Diane Keller. **ROW 2** — Mary Hammer, Linda Hennen, Sheri McKusick, Ken Booren, Leonard Townley, Richard Knox, Wayne Nelson, Marcia Bunn, Jim Fisher. **ROW 3** — Laurie Yost, Jeanne Berger, Judy Kasper, Sherman Hvinden, Frank Carlson, Peggy Sahlin, Glenn Anderson, Connie LeRoux. **ROW 4** — Geri Thiltgen, Gary Webb, Bonnie Picotte, Sandy Darling, John Nordlund, Bill Hayes, Gary Scott, Ralph Moore.



**HOME ROOM 201 — FRONT ROW** — Steve Mills, John Bergum, Robert Kost, Carol Anderson, Jeff Peterson, Christopher Wortman, Susan Johnson. **ROW 2** — Fred Gould, Mark Lundgren, Ron Springer, Corrie Proulx, Kathy Trudeau, Jean LaMotte, Jane Stolberg, Marilyn Miron. **ROW 3** — Jerry Sampson, Kathleen Winch, Barbara Elko, Greg Houle, Allen Judkins, Linda Carter, Diane MacAdams. **ROW 4** — Sharon Berggren, Tom O'Hara, Mike Switzer, Ann Bakeberg, Dorace Dupont, Jim Eckdahl, Carol Hartzi, Bob O'Brien.



**HOME ROOM 106 — FRONT ROW** — Norman Moody, Mary Parenteau, Geraldine Helget, Sandy Alcock, Chuck Alcock, Gary Stanley, Glenn Nadeau, Annette Everson, Arlyn Quiram. **ROW 2** — Steve Bernin, Jackie Cooley, Gloria Bowman, Jeff Campbell, Greg Faymerville, Mike Dresel, Donna Swanson, Norris Taylor. **ROW 3** — Art Schneider, Nick Lape, Terry Rousselow, Bunny Behrens, Penny Yale, Ellen Vietor, Ken Haug, Sam Maslowski. **ROW 4** — Kevin Mayer, Terry Husnik, Jeannette Marjer, Theresa Herzog, Mike Moen, Linda Juberigan, Claudia Lee, Linda Morrison.





HOME ROOM 102 — FRONT ROW — Pat Moen, Gregory Brisson, Curtis Behm, Billy Kunshier, Tony Sanders, Roger Rehbein. ROW 2 — Patty Houle, Dorothy Dick, Miriam Pedersen, Janet Lund, Ann Torgeson, Colette Nygren, Linda Poach, Wanda Anderson. ROW 3 — Janice Alcock, Judy Swanson, Rita Fike, Linda Bothman, Dianna Stankeivicz, Ken Winch, Richard Thompson, Roger Dufresne. ROW 4 — Pat Rowe, Tim Casey, Tim Glenn, Norma Michael, Mike O'Donnell, Dennis Erickson, JoAnne Kolberg, Mary SanCartier.



HOME ROOM 204 — FRONT ROW — Eddie Lundberg, Kathleen Johnson, Genevieve Smith, Linda Dehmer, Sandra Nelson, Madeleine Duchatel, Bill Eisenmenger. ROW 2 — Katherine Blad, Anita Gay, Char Saenger, Laurel Miller, Roger Anderson, Harlo Quiram, Craig Gervais. ROW 3 — Lilliam Sward, Pat Cameron, Carol Lindell, Kathryn Danford, Mark Danford, John Morrison, Frank Krall, Mike Sampson.



HOME ROOM 103 — FRONT ROW — Roberta Germeiner, Gary Fischer, David Grimes, Michael Mueller, Ken Lund, Rickie Schwichtenberg, Linda Olson. ROW 2 — Steve Ashback, Joe Moore, Bruce Saxe, Barry Ekvall, Marlene Houfer, Sandra Dawson, Rita Remitz, Margaret Miron, Ardel Kunshier. ROW 3 — Boniface Riopel, Rodney Pranke, Robert Carlisle, Carol Marier, Jeanne Vandelac, Shirley Branum, Mary Ersfeld, Carol Weber, Christine Kasper.





HOME ROOM 203 — FRONT ROW —  
Roselyn Bollinger, Irvin Stolp, Wayne  
Alfveby, Sandra Dresel, Kitty Thomas,  
Maxine LeRoux, Gladys Bergum. ROW 2 —  
Kathy Knauff, Susan Houle, Terry  
Odegard, Robin Booren, Larry Rowell,  
Earl Buys, Collette Carpenter. ROW 3 —  
Nancy Gardner, Norma Helget,  
Hjordis Ruby, Jolene Rousselow, Jim  
Schlaeger, Tom Hagert, William Eg-  
gers. ROW 4 — Roger Engquist, Ta-  
mara Stromquist, Leonard Christensen,  
Linda Simmons, Sharon Mudgett,  
Duane Dailey, Kathy Palmer, Lynn  
Mattson.



GRADE 7 HOME ROOMS 109,115,  
203, and 204. — FRONT ROW — Ken  
Schlavin, David Stoltzman, Larry Pom-  
mier, Peter Elko, Ray West. ROW 2 —  
Mike Branchaud, Dave Hawkinson,  
Mike Koester, Walter Larson, Mark  
Gaetz, Charles Myer.



HOME ROOM 101 — FRONT ROW —  
Jean Rehbein, Raymond Anderson,  
Mary Johnson, Lindon Knutson, Dawn  
Powell, Norman Edstrom, Richard Arm-  
strong. ROW 2 — Duane Hapka,  
James Broadbent, Esther Whitmarsh,  
Arnold Judkins, Harvey Pierson, Mike  
Ristow, Bruce Lauri, Danny Chaussee.



# CLASS OFFICERS

GRADE 10 — Julie Jenuwine, Kathy Balzart, Cheryl Rehbein, Jerry Patrin.



GRADE 11 — Phyllis Amundson, Jim Yale, Pat Christensen, Anne Jenuwine.



GRADE 9 — Darrel Severson, Linda Martinson, Diane Johnson, Tom O'Donnell.



GRADE 8 — Pat Morley, Buster Lind, George Osgood, Mary Taylor.

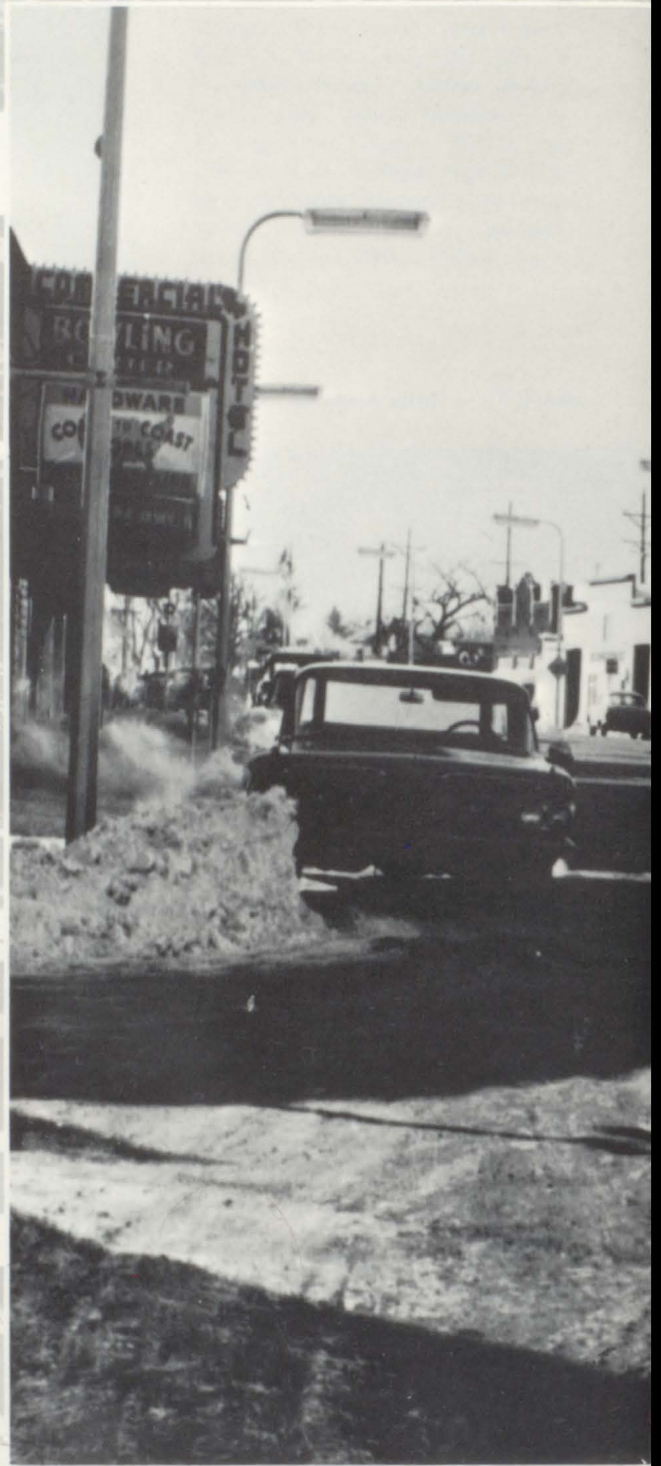


GRADE 7 — Linda Simmons, Kathy Peloquin, Tim Casey, Earl Buys.





# OUR ADVERTISERS





MERIT OUR SUPPORT!





# JOHNSON PHOTOGRAPHY



Portrait and Commercial Photographs

Chicago City, Minnesota

EMpire 8-2765



**Congratulations!**

**Seniors!**



Wedding Candids  
A Specialty





**NATIONWIDE  
INDUSTRY**

Congratulations

From

**GRAVES LAWNMOWER**

Sales And Services

Best Wishes To The Class Of '62

From

Your Building And Remodeling Headquarters

**THE SALZER LUMBER COMPANY**

Dependable Service

Since 1899

TE 5-3511

Forest Lake, Minnesota

Congratulations!

**WAGNER'S  
HAMBURGER SHOP**

24 HOUR SERVICE

H. L. and C. M. Taurman

FORD

THUNDERBIRD



FALCON

**MICKEY JEANS FORD**





BEST  
WISHES  
IN THE  
FUTURE

**SKOGMO'S STORE**

**INTER-STATE LUMBER CO.**

Building Materials

Colorizer and Paints

TEmple 5-3492

BEST WISHES

TO THE CLASS OF '62



**BOB JOHNSON  
SPORTING GOODS**

Forest Lake

SUCCESS TO THE GRADS!

CONGRATULATIONS GRADS!

**WARREN PATRIN'S  
INSURANCE AGENCY**



FIRE — AUTO — CASUALTY

**CARTER'S JEWELRY**

Keepsake Diamonds

Watches, Silverware, and Jewelry

Phonographs and Records

Phone TEmple 5-3378

Forest Lake, Minn.

CONGRATULATIONS

CLASS OF

1962

**TOTS TO TEENS**



BEST WISHES

FROM



**BEN FRANKLIN**

CONGRATULATIONS

CLASS OF '62

**LABELLE**

**TEXACO**



CONGRATULATIONS

AND

BEST WISHES

GRADUATES OF 1962

**OUR OWN HARDWARE**

CHICKEN

STEAK

SEA FOODS

**REX CAFE**

**JEANS IMPLEMENT. INC.**

FARM MACHINERY HEADQUARTERS

TE 5-3322

M-M

FORD

OLIVER



Congratulations

And

Best Wishes

For A

Successful Future

FOREST LAKE GRADS

**FOREST LAKE STATE BANK**

Member Of The FDIC

CONGRATULATIONS

CLASS OF '62



**DOUG'S STANDARD  
STATION**

Best Wishes

From

**E. J. HOULE, INC.**

Forest Lake

**BENSON-PETERSON**

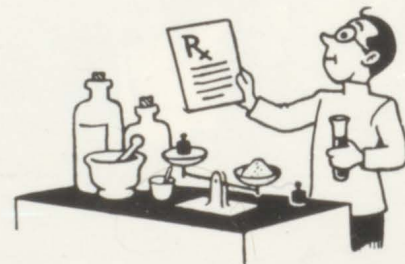


OLDSMOBILE — JOHN DEERE

Phone: TEmple 5-3469

Congratulations

Grads of '62



**PETERSEN DRUGS**

Congratulations

And

Remember

**THE FOREST MANOR MOTEL**



Congratulations

Class of 1962

**A. W. BERGGREN**

Electrical Contracting

TE 5-2408

GA 9-1262

CONGRATULATIONS

GRADS

From

**MIDLAND COOPERATIVES  
INC.**

Scandia, Minnesota



**THE HOULE GROCERY**

TE 5-3513

**D AND E  
CUT RATE GROCERY**

AND

**NIELSON OIL  
COMPANY**

Congratulations Grads!

Best Wishes

Class Of '62

**HAROLD'S SHOES**

Forest Lake

Harold and Ann Moen

Compliments

From

**NORTHERN STATES  
POWER COMPANY**





Congratulations

And Best Wishes

## FOREST LAKE TIMES

TEmpLe 5-3311

Good Luck, Grads!



From

### HORNING'S FEEDS AND PRODUCE

South Of Forest Lake

CONGRATULATIONS

SENIORS

### ERSFELD MEATS

CITY MEAT MARKET

Best Wishes

Class Of '62

### EARLING'S APPAREL

Forest Lake, Minnesota



Congratulations

And

Remember

### FOREST LAKE GREENHOUSE

For Those Special Occasions



### JOHNSON REAL ESTATE

Farms - Homes - Lake Properties - Businesses - Appraisals

Offices: GArden 9-1183

DON A. JOHNSON, Broker, Realtor TEmpLe 5-3933

Residence: TEmpLe 5-3369

FOREST LAKE, MINN.

BEST WISHES

### KLEIN L. JOHNSON

Forest Lake



BEST WISHES

**MATTSON'S FUNERAL HOME**

CONGRATULATIONS!

FLHS SENIORS

**BOB MEISTER'S**

**BAR AND GRILL**

Scandia, Minnesota



**CARA-VAN  
DAIRY**

Congratulations

Class Of '62

Forest Lake

Compliments Of

**FOREST LAKE**

**DEPARTMENT STORE**

TE 5-2257

Best Wishes

From

**HENNEN CHEVROLET**

Forest Lake

CONGRATULATIONS

SENIORS

**BOB AND JOE'S BARBER SHOP**

In Theater Building

Forest Lake

Best Wishes

**STOKES OIL**

Best Deal In Town





Wholesale Retail

Meat Provisions

**FOREST LAKE  
PROVISION COMPANY**

Forest Lake

TE 5-3576

Congratulations

From

**RUEB'S TIRE SHOP**

Tire Headquarters

TE 5-2245



Congratulations

Class Of

1962

FINEST IN CUSTOM

BUILT FURNITURE

**FOREST LAKE FURNITURE MART**

TE 5-3945

32 East Broadway

Forest Lake

Good Luck!

Class Of '62

**WOLTER'S AUTO SUPPLY**

CONGRATULATIONS!

**H. K. DUPONT**

Good Luck

Seniors!!

**VALENTY'S**

Wishing You Our Best

**UNCLE JIM CORBETT'S SEWING CENTER**

White and Universal

Sewing Machines

Sales and Service

TE 5-3525



Best Wishes

**ENGQUIST HARDWARE**

Hardware — Sporting Goods

Phone TE 5-3925

Congratulations

From

**F. C. BERGH DRUGS**

Established in 1904

Congratulations To  
Class Of '62

**BOB JOHNSON, DIST. AGENT**

NEW ENGLAND MUTUAL  
LIFE INSURANCE CO.

Boston, Mass.

Forest Lake

**FOREST LAKE SHELL**



TE 5-9900

Forest Lake, Minnesota

Congratulations From Cy

Congratulations

Grads

**LAKESIDE CABINS**

Good Luck Grads!

**SCANDIA MERCANTILE**

"If We Sell It

We Service It"

Scandia, Minnesota

**JERRY'S**

**COTTAGE BARBER**

and

**BEAUTY SHOP**



BEST WISHES, GRADS!



Hope You Will  
Remember  
Many Hours  
of Fun  
at the Rink



For a Place to Hang  
Your Hat —

**HERMES & HILTON  
REALTORS**

Forest Lake, Minn.

There's No Place Like  
Home When It's Yours

Phone TE 5-2482 Home Phone TE 5-3867



# PROFESSIONAL DIRECTORY

BEST WISHES

TO GRADS

**DR. J. M. LYONE**

CONGRATULATIONS

FROM

**FOREST LAKE  
CHIROPRACTIC CLINIC**

BEST WISHES

**DR. ROBERT R. STRUNK**

CONGRATULATIONS

TO THE

GRADUATING CLASS

OF

1962

**DR. G. M. RUGGLES**

GOOD WISHES TO

THE CLASS OF '62

**DR. O. R. VAN WIRT**

**TOLZMANN DECORATORS**

PAINTING

SHEET ROCK FINISHING

TE 5-3938

FOREST LAKE

CONGRATULATIONS

**DOCTORS' CLINIC**

G. T. MIDBOE, M.D.

J. L. PURDIE, M.D.

C. F. PEIKERT, M.D.

BEST WISHES TO GRADS

FROM

**DR. C. D. LARSON**





Congratulations To  
The Class Of '62  
**SETTERHOLM'S**

Congratulations

Class Of 1962

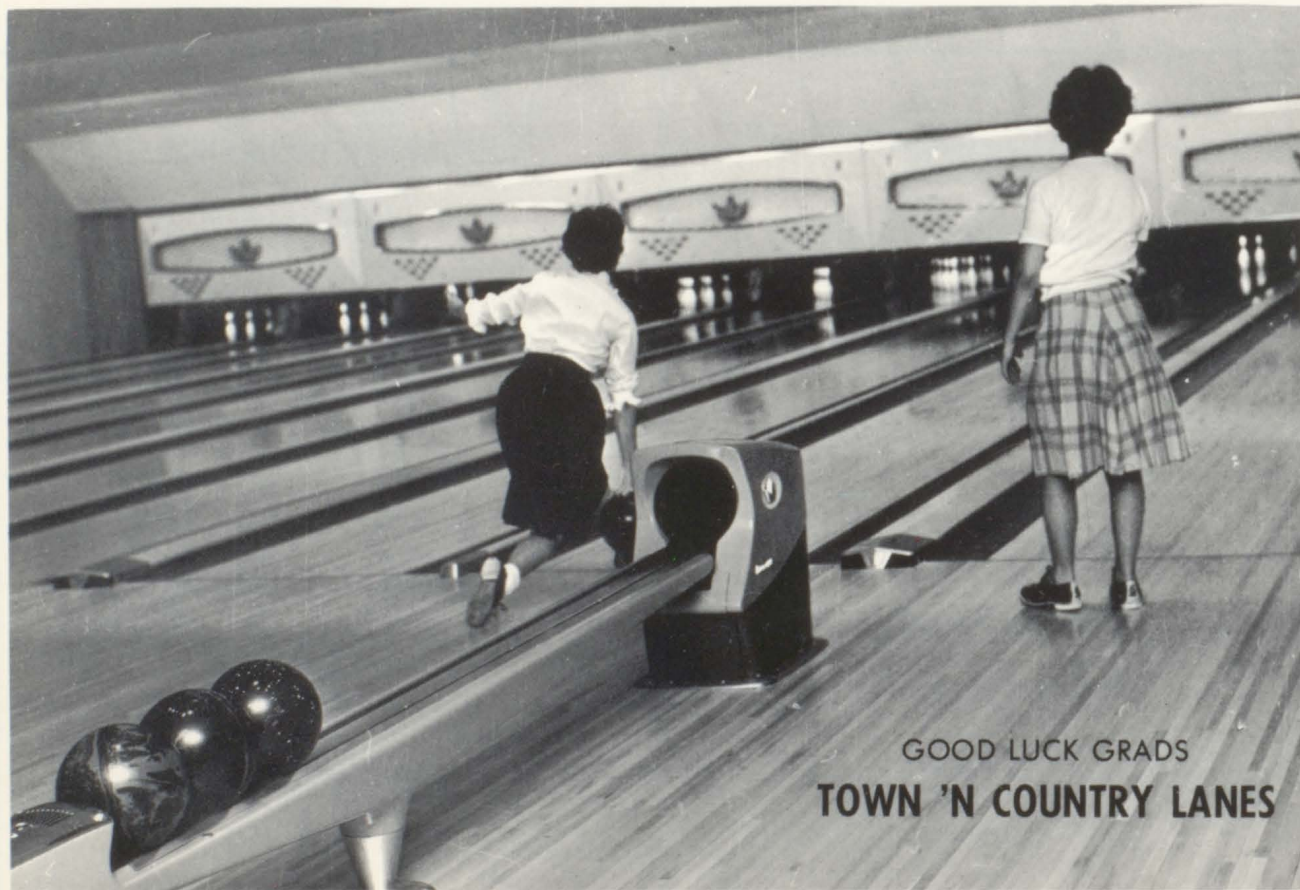
From

**WINK'S  
LIQUORS**

Good Luck

GRADS!

**WINNICK'S**



GOOD LUCK GRADS  
**TOWN 'N COUNTRY LANES**



GOOD LUCK

TO THE

CLASS OF '62



From

**THOMPSON'S RED OWL**

"Where To Buy It"

TE 5-3459

Congratulations

From

**COOKS PAINTS**

Everything For  
Home Decoration

Richard Kunshier

TEmples 5-2693



Good Luck!

**RUPPERT AND IVERSON**

Plumbing and Heating

TE 5-3563



**JOURNEY'S END**

**AIRPORT**



Congratulations From

**COUNTRY HOME BAKERY**

Forest Lake

Merle and Rita Downes

Congratulations

Grads

From

**FOREST LAKE MOTORS**



HOMECOMING ATTENDANTS —  
Dave Sandstrom, Mary Mills.

Best Wishes

From

**COTTAGE CLEANERS**

Forest Lake

Congratulations

From Your

**FOREST LAKE**

**BERGSTROM HARDWARE STORE**

Lloyd E. Bergstrom

Congratulations

From

**PATAK'S BARBER SHOP**

Carl and Don





1962 FORESTER EDITORS — Sue Andersen, Charlotte Case, Sharon Case, Norma Danks.

## '62 FORESTER STAFF

### EDITORS-IN-CHIEF

Sue Andersen  
Sharon Case

### CO-EDITOR

Charlotte Case

### JUNIOR EDITOR

Norma Danks

### BUSINESS MANAGER

Vickie Danks

### SUBSCRIPTIONS

Judy Istvanovich

### SPORTS

Vince Monson

### FACULTY

Cheryl Moody  
Marlys Peterson

### SENIORS

Judith Thurnbeck

### UNDERCLASSMEN

Dele Fuglie  
Linda Voss

### ACTIVITIES

Audrey Engstrom  
Wendee Forsberg

### ADVISOR

Mr. Rafferty

## A NOTE FROM THE EDITORS . . .

Since a book of this size could not be undertaken without help from many people, we would like to take this opportunity to thank some of the many people who have given much of their time and effort to help us "make our deadlines."

First a big "thanks" to the many people on our editorial staff who came and helped us out when we were in a rush, especially Cheryl Moody who always was around to help us when we needed it most, and to all the teachers and the administration who cooperated so willingly when we had to interrupt classes for pictures and information.

Since this yearbook would not have been possible without financial help, we would like to express our thanks to Vickie Danks for her unending endeavor to keep the books balanced, and also to Judy Istvanovich and the girls on the business staff who worked so diligently obtaining subscriptions and advertisements.

We wish to thank Johnson Photography Studios in Chisago City for their constant aid in supplying the many pictures needed.

Your editors hope you will enjoy your 1962 FORESTER through the years.

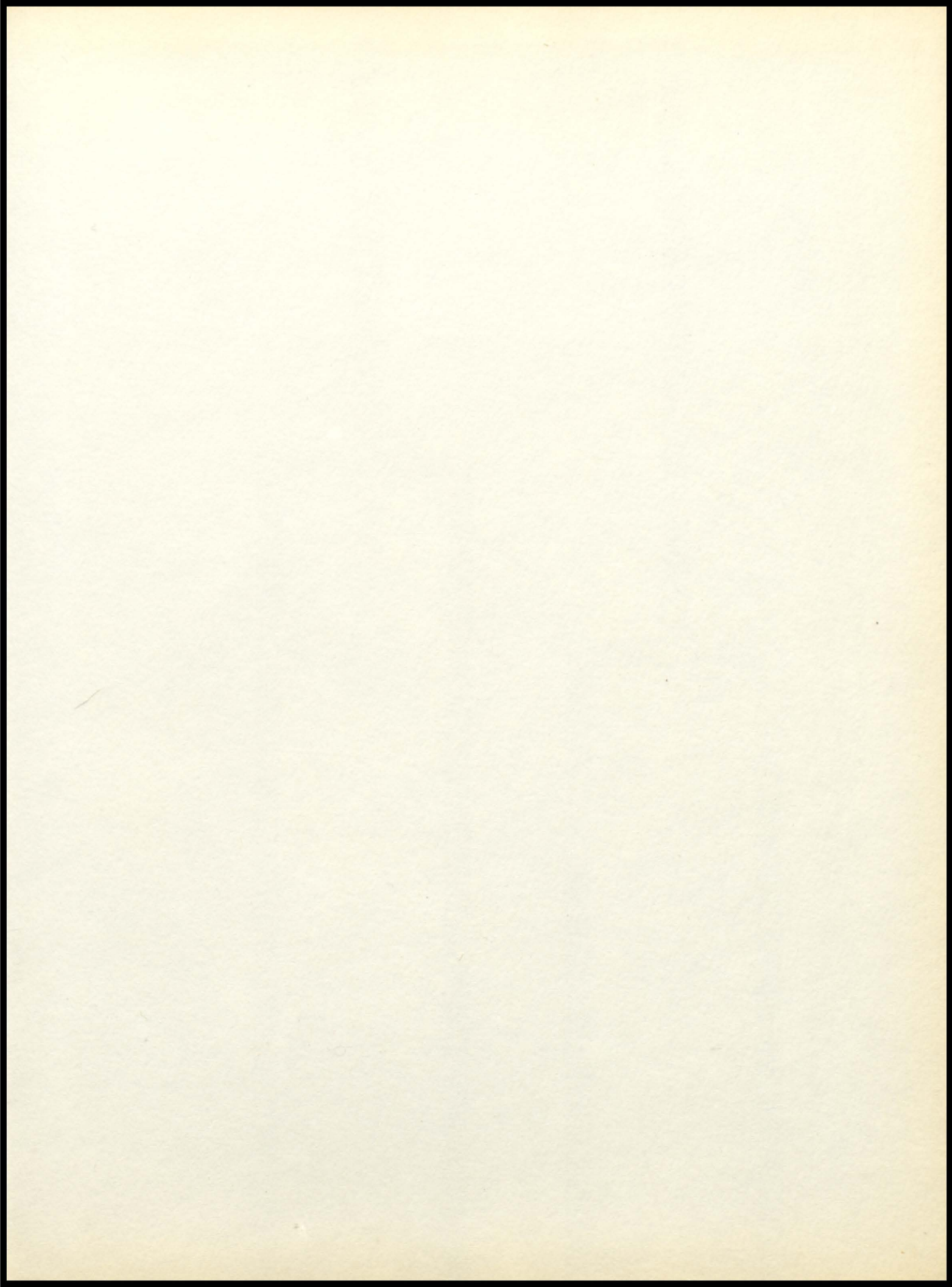
And last but not least, to Mr. Rafferty, our advisor, we dedicate the '62 FORESTER with much appreciation and gratitude.

THE EDITORS

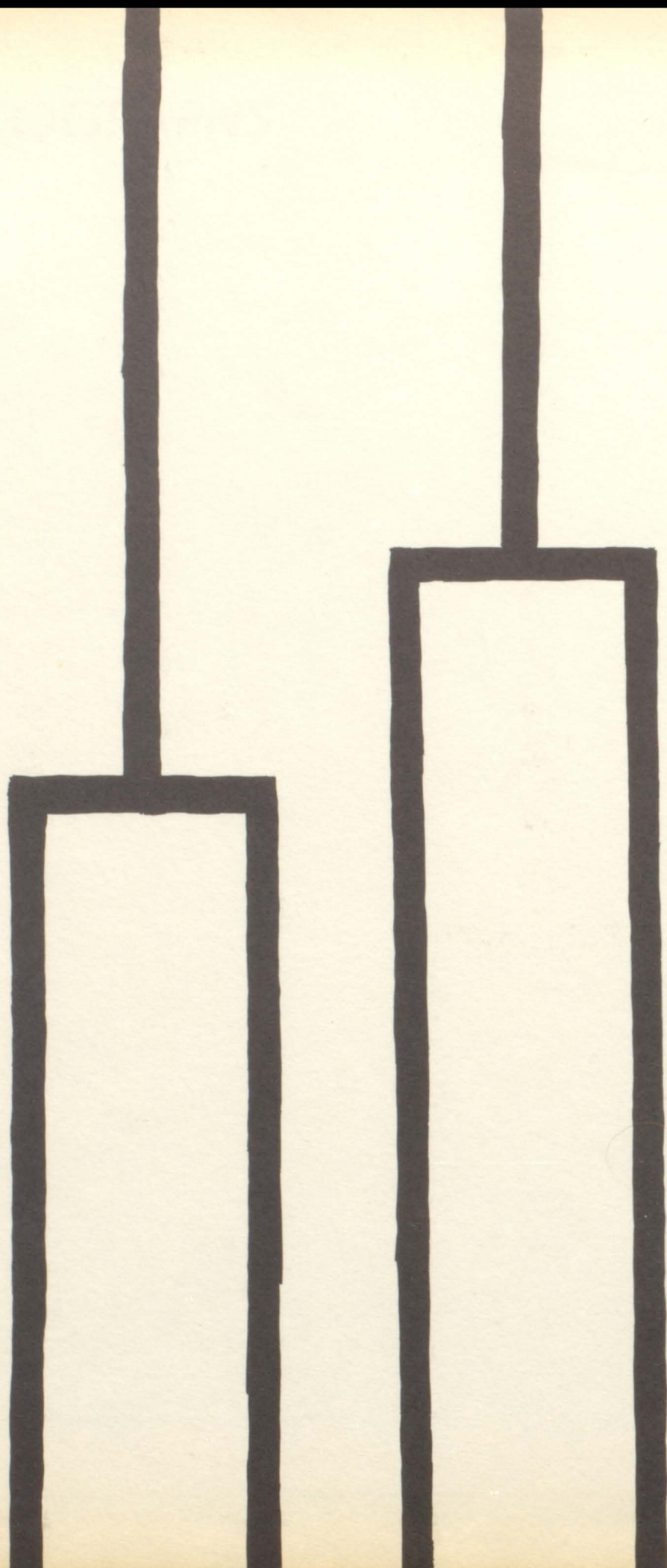




# AUTOGRAPHS

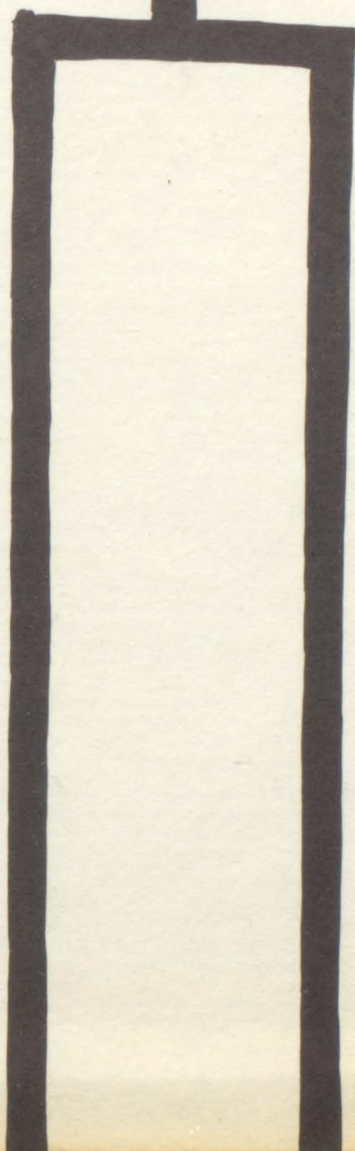
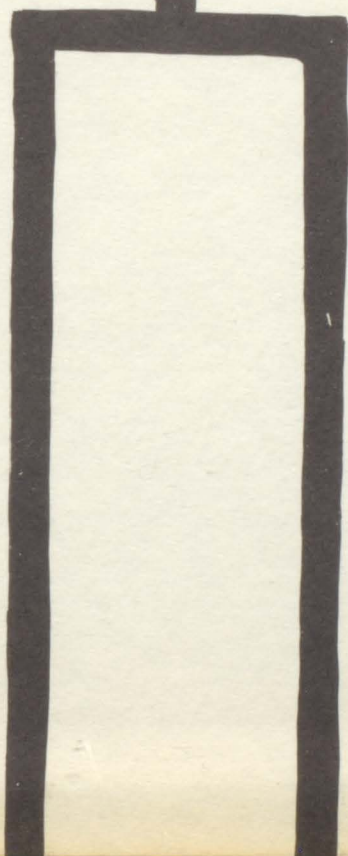






Ex Libris

---







AMERICAN  
YEARBOOK  
COMPANY