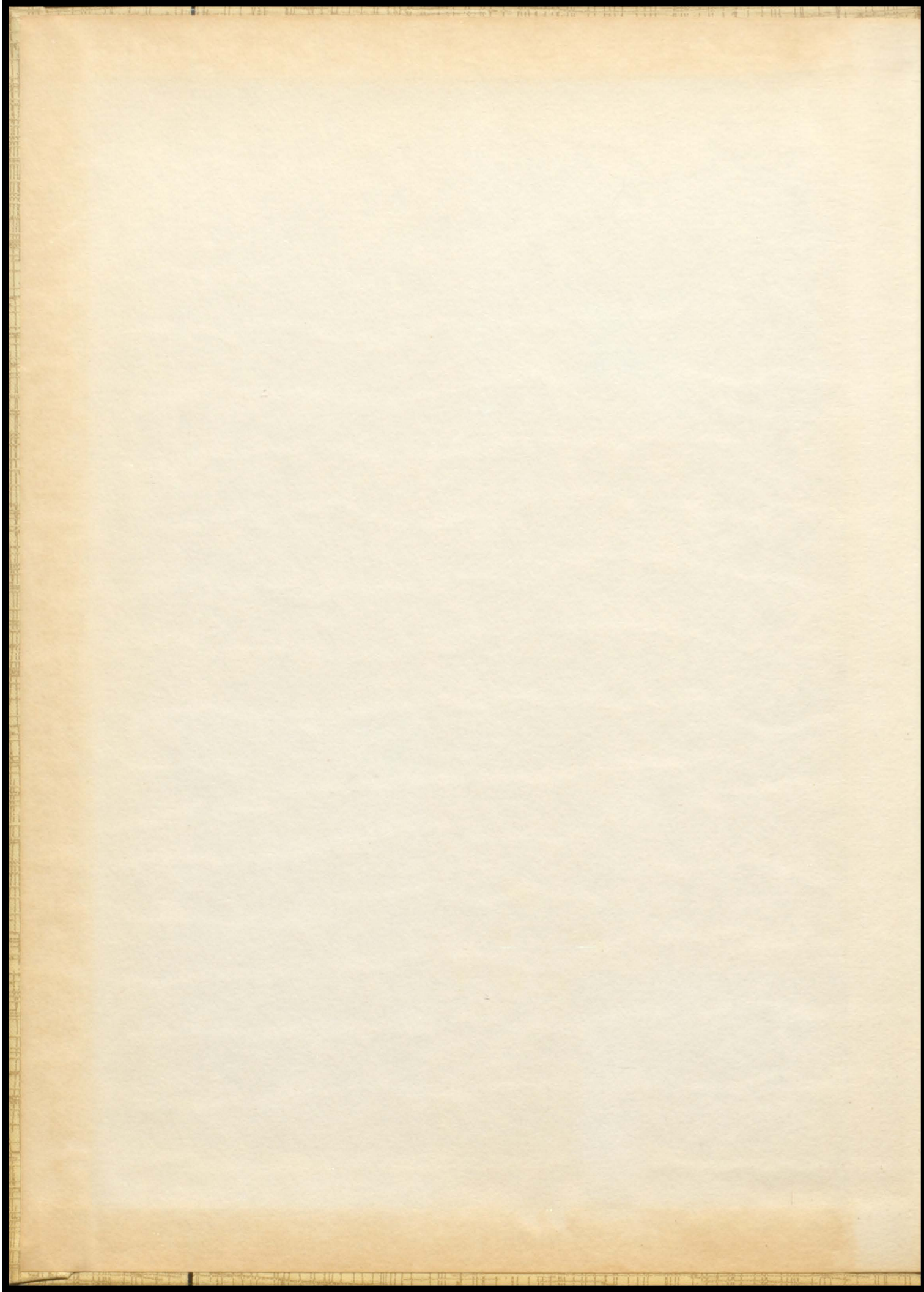
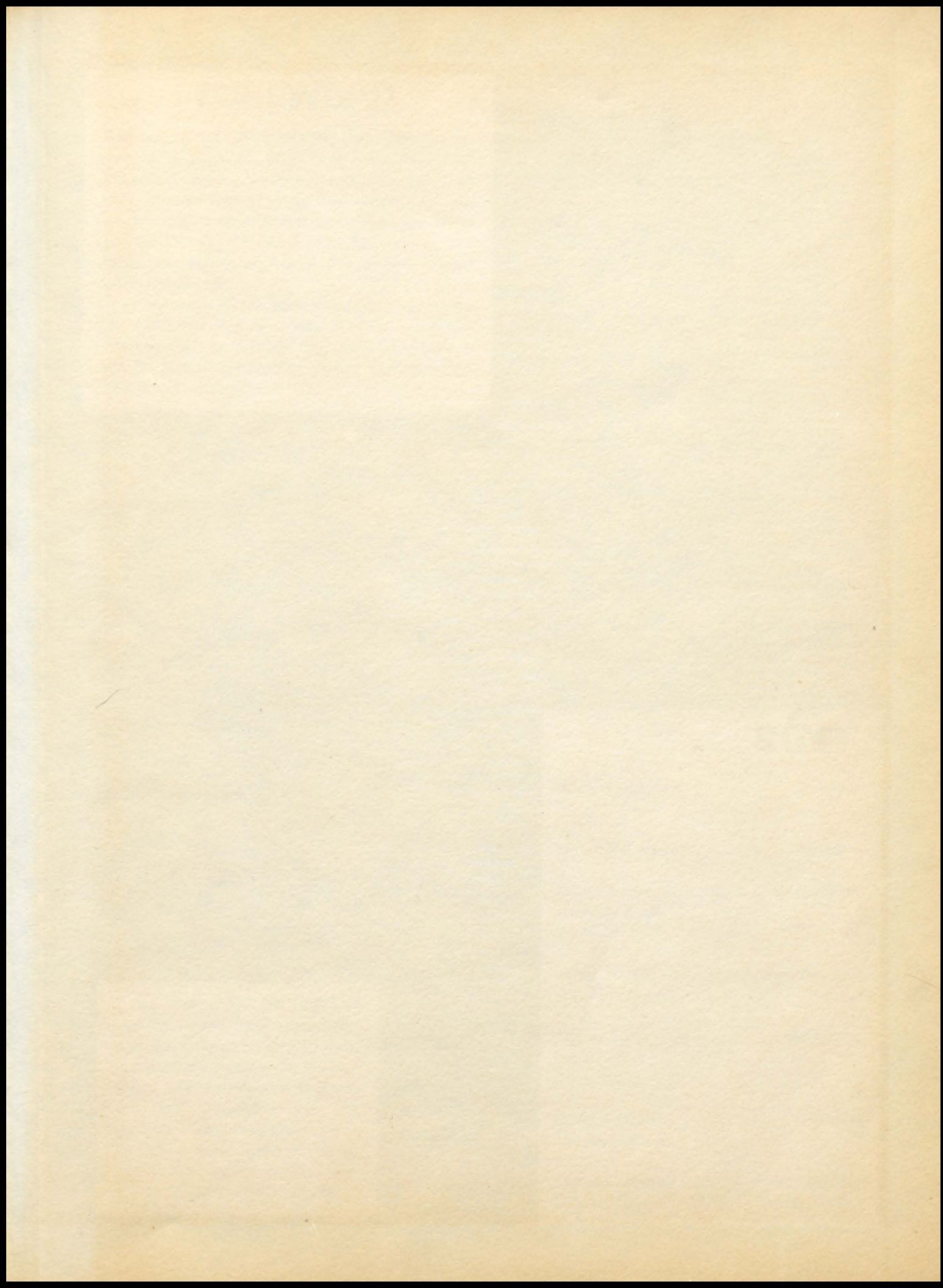


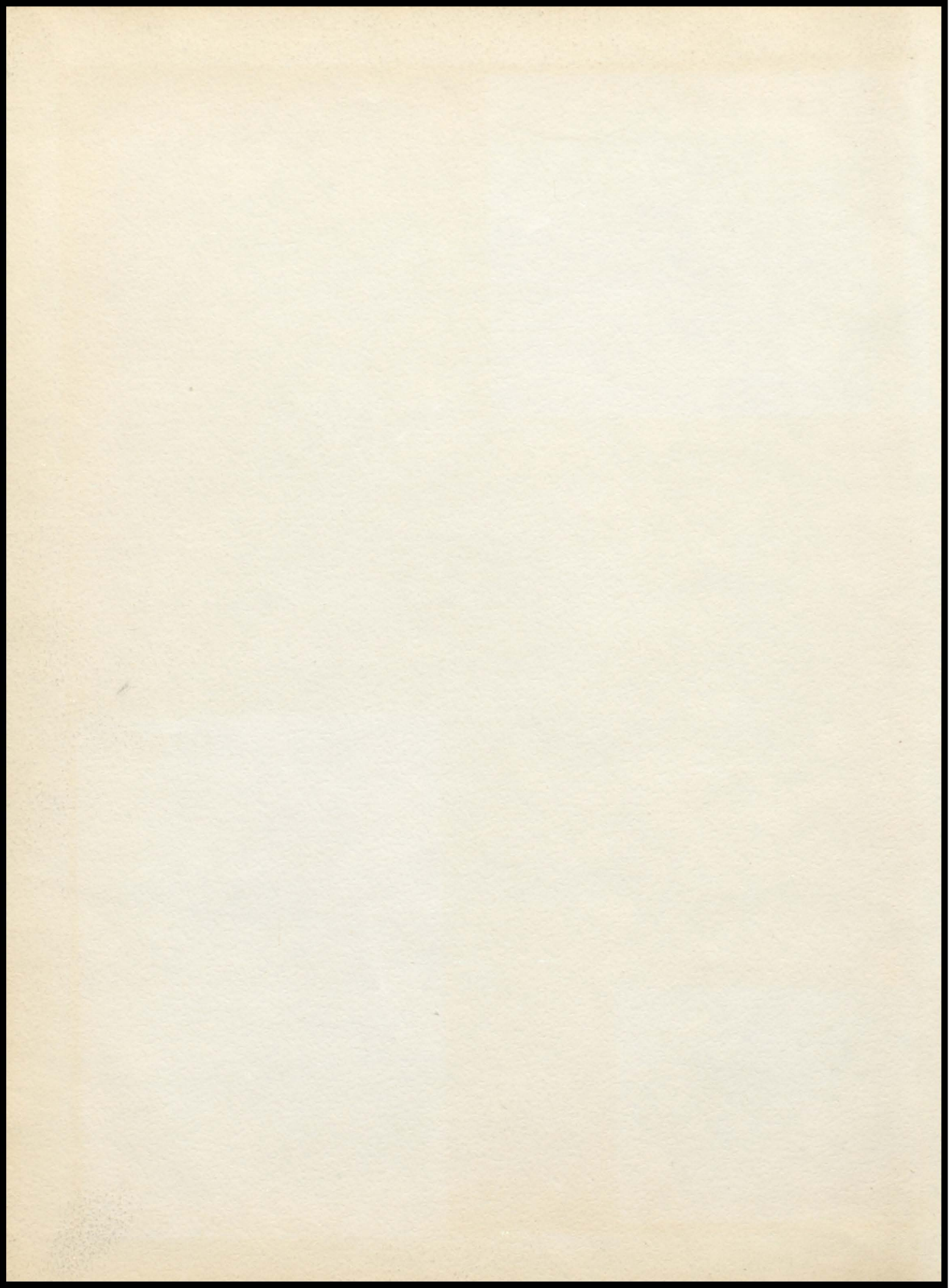
FOREST LAKE



59







... FOREWORD

In editing the '59 FORESTER, your staff has attempted to single out ideas from books throughout the nation, and to put them into practice here with their own individual touch. The seasonal theme, which made its debut in last year's book, proved so popular that the '59 editors have borrowed it, and to a great degree, used it as a focal point around which to build ideas.

As one picks up this book some years hence, the '59 FORESTER and thousands of other yearbooks will no doubt be "dated," but the editors hope it will be at least an accurate picture of Forest Lake High School, 1958-1959.

The staff of the '59 FORESTER wish to extend their appreciation and thanks to all those who made this yearbook possible. To the merchants and businessmen of Forest Lake and surrounding area who gave very tangible support and to the David Bank Studio of Minneapolis who supplied many photographs, we express special thanks.

... STAFF

Darlene Simmons Co-Editors
Mavis Steltzner

Mary Lynn Martz Art Editor

Marlys Marier Sports Editors
Hermann Kauls
Zig Kauls

Joyce Stringer Subscription Managers
Ruth Anne Preiner

Bonnie Sovia Advertising
Pat Schatz
Diane Ward

David McGovern Activities
Marilynn Winick

Evalina Turnquist Faculty Section
Virginia Dupont Senior Section

TABLE OF CONTENTS

FACULTY 8

SENIORS 15

FALL 26

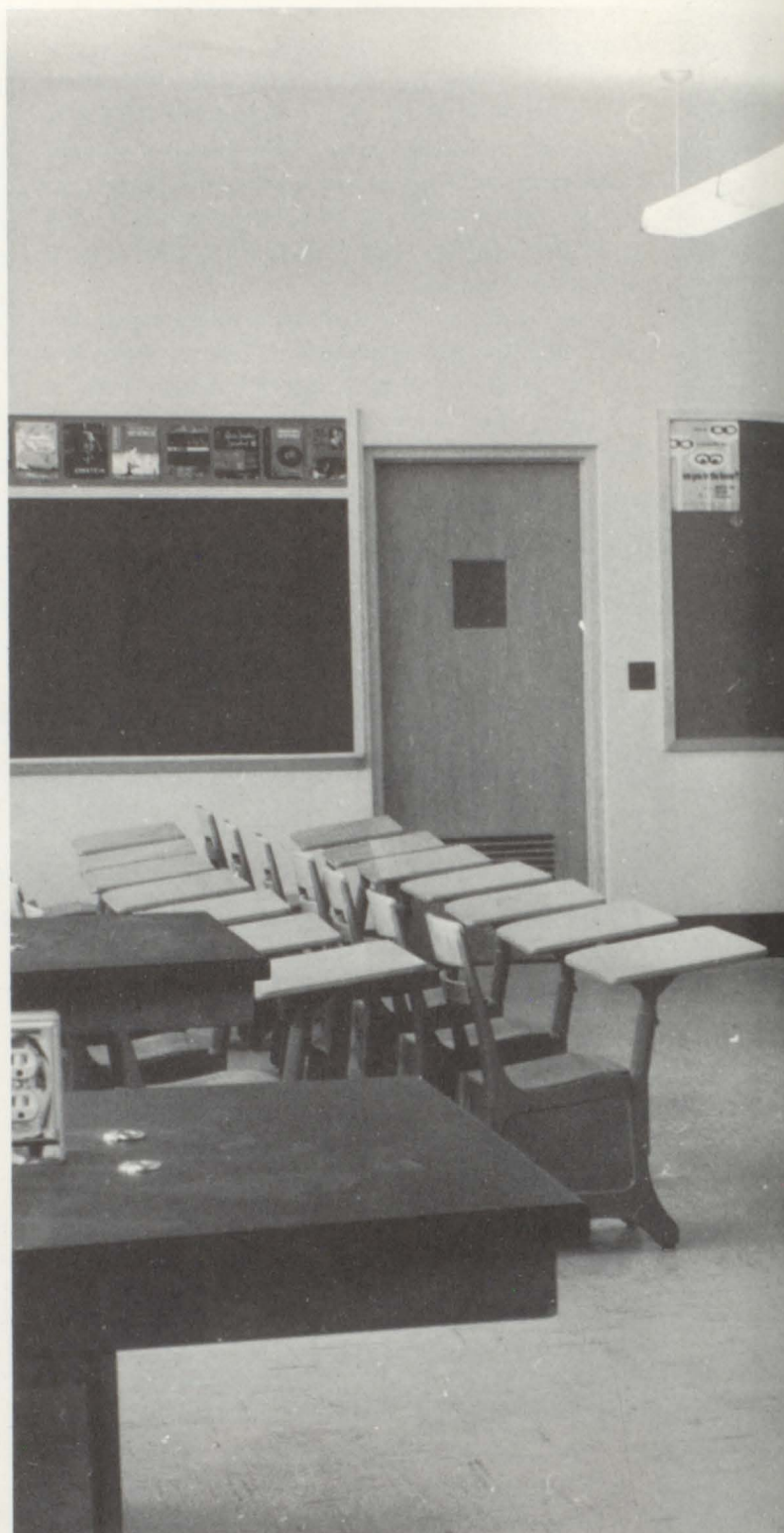
ACTIVITIES 37

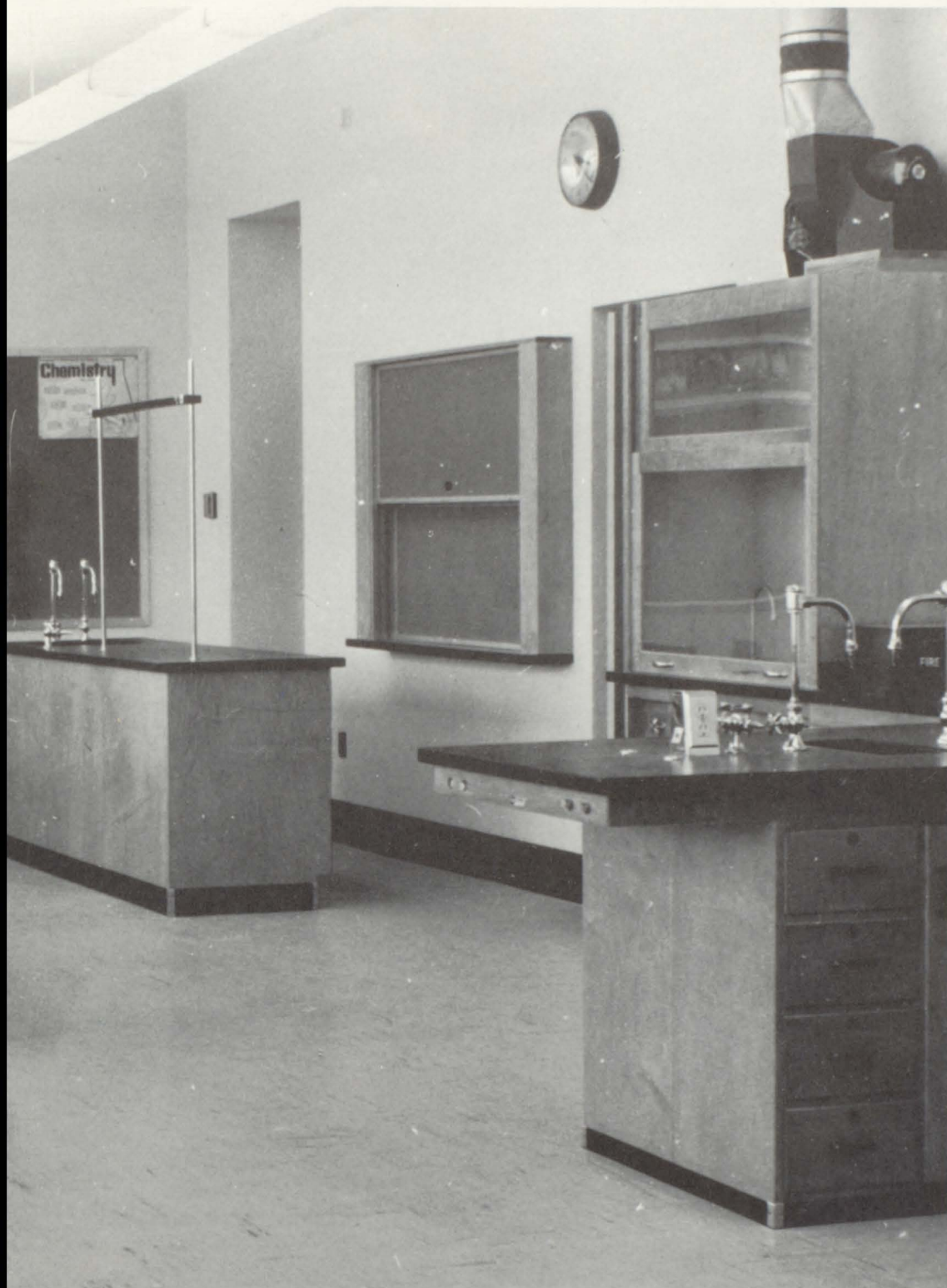
WINTER 54

UNDERCLASSMEN . 61

SPRING 70

ADVERTISING 77





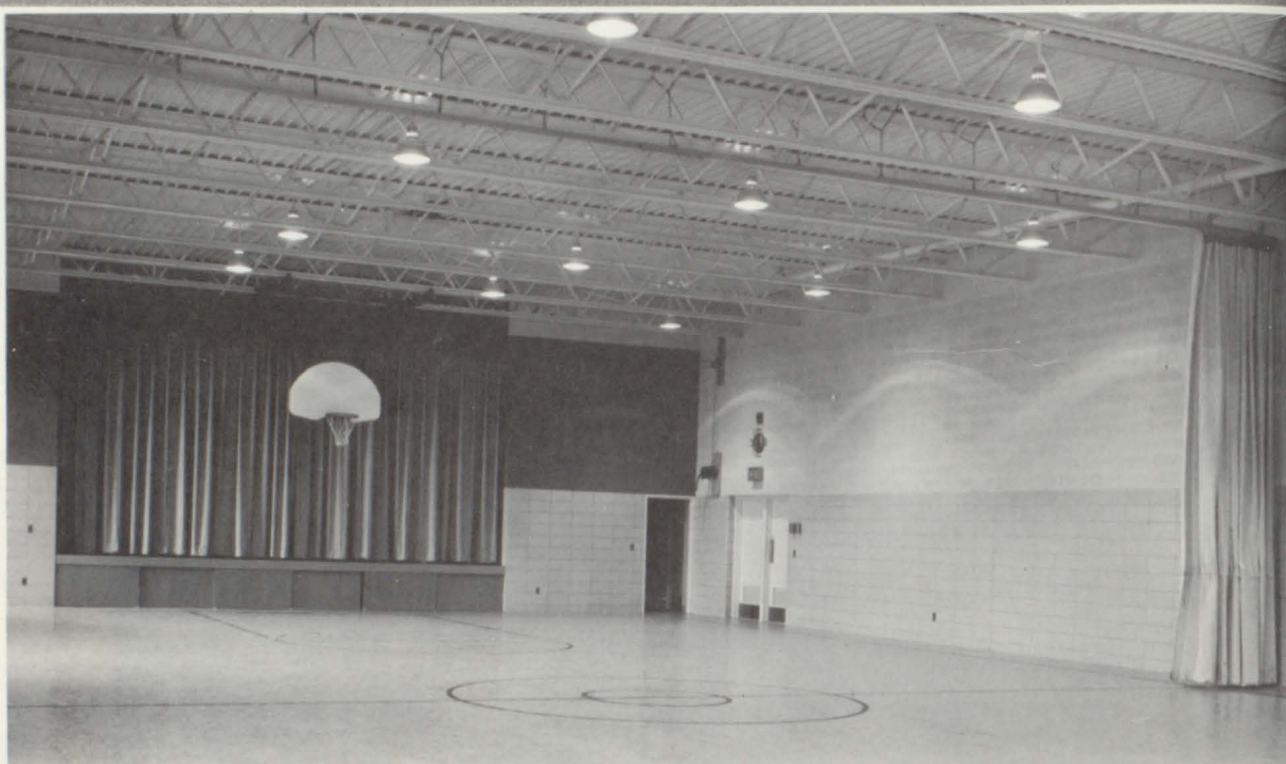
FOREST LAKE HIGH SCHOOL

FOREST LAKE, MINNESOTA

FOREESTYER
'59

N
E
W

A
D
D
I
T
I
O
N
S



D E D I C A T I O N



The members of the Class of '59 proudly dedicate our **FORESTER** to Melba Sahlin, whose assistance to our class and the whole student body has been long and constant. In her position as the principal's secretary, she has become known to all of us as an extremely versatile person — as a dispenser of scotch tape, aspirins, paper clips, carbon paper and staples, an overseer of the lost and found department and the custodian of the class treasuries as well as being an efficient secretary. Therefore to Melba Sahlin for her never-ending help to all of us, the seniors of '59 and the whole student body wish to express our sincerest thanks.



BOARD OF EDUCATION MEMBERS. LEFT TO RIGHT: Harvey Westberg, Joseph M. Morley, Henry M. Handrum, Norton Y. Taylor, Herbert W. Enguist, Henning W. Engstrom, J. A. Hughes, Superintendent of Schools.



Mr. FLOYD W. COHOES
High School Principal
Bachelor of Arts degree from St. Cloud Teachers College and graduate work at University of Minnesota.



Mr. HAROLD C. MANLEY
Assistant High School Principal
Bachelor of Science and Master of Arts degree from University of Minnesota.



J. A. HUGHES

Superintendent

Bachelor of Science from Carleton and Master of Arts from University of Minnesota.



Mr. JESS H. WICKMAN

Assistant Elementary School Principal

Wayne State Teachers, Wayne, Nebr.; Bachelor of Arts degree from North Central College, Naperville Ill., and Master of Arts from University of Chicago.



Mr. GEORGE J. SEDLACEK

Elementary School Principal

Bachelor of Science and Master of Arts degrees from University of Minnesota.

FACULTY

DONNA BOBEN

Bachelor of Arts degree from Clarke College
... English.



MARY JANE CARLSON

Bachelor of Arts degree from Hamline University ... English.

THOMAS J. GALVIN

Bachelor of Arts degree from St. Thomas College ... English.



LOLA Z. ORMEROD

Bachelor of Arts degree from the University of Washington, St. Louis, Missouri ... English.



ALICE WEGLEITNER

Bachelor of Arts degree from St. Benedict College ... English.

PAUL RAFFERTY

Bachelor of Arts degree from St. Thomas College ... English ... Latin ... Journalism.

FLORENCE ROLES

Bachelor of Science degree from Mankato State College ... English.

EUGENE H. BUNGE

Bachelor of Arts degree from Hamline University ... Dramatics ... Speech ... Debate.





ROMONA VOLKMANN

Bachelor of Education from Wisconsin State
College of Oshkosh . . . Remedial Reading.

GALEN L. CAIN

Bachelor of Arts and Bachelor of Science de-
grees from the University of Minnesota . . .
Science.

HERBERT H. HARPER

Bachelor of Science and Masters degrees
from the University of Minnesota . . . Bi-
ology . . . Conservation . . . Mathematics.



EDWARD D. MAGNUSON

Bachelor and Master of Science degrees from
the University of North Dakota . . . Science
. . . High School Counselor.

KEITH A. MARKUSON

Bachelor of Science degree from the University
of Minnesota . . . Science . . . Driver training
. . . Audio-Visual.

GEORGE A. NYMAN

Bachelor of Science degree from St. Cloud
Teachers College . . . Chemistry . . . Phys-
ics . . . Solid Geometry . . . Trigonometry.



MARVIN FUHRMAN

Bachelor of Science degree from Stout State
College . . . Science . . . Industrial Arts.

GEORGE E. PELTO

Bachelor of Science and Associate in Sci-
ence from Ely Jr. College and University
of Minnesota . . . Mathematics . . . Higher
Algebra . . . Plane Geometry.



LOIS HANLY

Bachelor of Science degree from University of Minnesota, Duluth Branch . . . Mathematics . . . Dean of Girls.



E. A. RAYMOND

Bachelor of Arts degree from University of Minnesota . . . Mathematics.

ARNOLD SCOFIELD

Bachelor of Science degree from North Dakota Agricultural College . . . Mathematics.



RICHARD C. RANK

Bachelor of Science and Master of Arts from the University of Minnesota . . . Counselor.

JUDITH SULLWOLD

Bachelor of Science degree from St. Catherine's . . . Home Economics.

FLORENCE KLINKERFUES

Bachelor of Arts degree from St. Olaf College . . . Home Economics.



RAYMOND KULBECK

Bachelor of Science degree from the University of Minnesota . . . Farm Mechanics . . . High School and Adult Agriculture.

LEE D. SANDAGER

Bachelor of Science and Master of Science degrees from University of Minnesota . . . FFA . . . Vocational Agriculture.

FACULTY

FORREST A. RAY

Bachelor of Science degree from Mankato State Teachers College . . . Industrial Arts.



JOHN SCHUMACHER

Bachelor of Science degree from Winona State College . . . Industrial Arts.



RUSSELL HAMMOND

Bachelor of Arts degree from Mankato State Teachers College . . . Industrial Arts.

KERWIN ENGELHART

Bachelor of Arts degree from Hamline University . . . Physical Education . . . Drivers Training . . . Basketball Coach.



KENNETH HANSON

Bachelor of Science degree from La Crosse State Teachers College . . . Physical Education . . . Football Coach . . . Assistant Track Coach . . . Drivers Training.

GENEVIEVE STANG

Bachelor of Science degree from St. Cloud State College . . . Physical Education.

ROLLIN NELSON

Bachelor of Arts from the University of Minnesota . . . History . . . Music . . . Band.

RUSSELL M. ROSE

Master of Music degree from Minneapolis College of Music . . . Choir . . . Rudiments . . . Music.





EDMUND GRUND

Bachelor of Science degree from University of Minnesota, Duluth Branch . . . Social Science . . . Economic Geography.

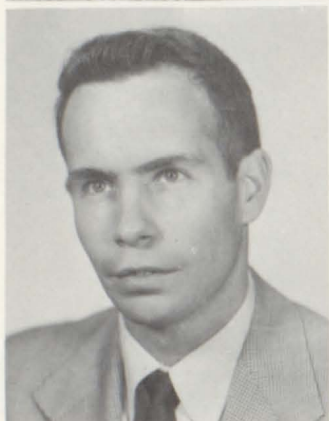


FRANK J. TERRY

Bachelor of Arts degree from University of Minnesota and St. Thomas . . . Social Studies . . . World History.

VERNON P. DAHL

Bachelor of Science degree from St. Cloud State . . . Social Studies . . . American History.



THOMAS MATTESON

Bachelor of Science degree from St. Cloud State . . . Social Studies . . . American History.

THEA CARPENTER

Bachelor of Arts degree from Augsburg College . . . Librarian.

JACK L. BUYS

Bachelor of Arts and Bachelor of Theology degrees from Allegheny College, Meadville, Penn . . . Shorthand . . . Office practice . . . Typing.



LEROY STANG

Bachelor of Science and Master of Science from St. Cloud State . . . General Business . . . Consumer Mathematics . . . Typing . . . Basketball Coach.

GRETCHEN GOODMAN

Bachelor of Science degree from the University of Minnesota . . . General Business . . . Book-keeping.



LEFT TO RIGHT: Virginia Dupont, Karen Krueger, Pat Peterson, Annita Videen, Roberta Anderson, Diane Warner, Alice Sandberg, Joyce Stringer, Ruth Anne Preiner, Margaret Hollihan, Paula Brust, Mary Hollihan, Karen Reiter, Kay Fuglie. Melba Sahlin. Principal's Secretary.

OFFICE HELP



Jeannette Marcott, Grade School Secretary

May Damsgard and Muriel Alcock, Superintendent's Secretaries.





SEATED: George Okeson, Helmer Swensen, Angelica Solem, Kenneth Pepin, Peter Johnson. **STANDING:** Al Lellman, Millard Olson, Reynold Erickson, Frank Collins.

CUSTODIANS

Maintaining a physical plant the size of the recently-expanded Forest Lake school is a never-ending task. Repairing, renovating and renewing the seemingly countless rooms, closets, halls, stages, and shops fall to the several people who make up the service staff of this system. While the nine outlying schools are served on a part-time basis, seven men and one woman have the main plant to care for, and are under the direction of Head Custodian Reynold Erickson.

The thirty-two bus drivers who morning and evening, day after day traverse the nearly two hundred square miles of our district returning and picking up approximately fifteen hundred students, also play a vital part in keeping the school running smoothly.

Five full-time cooks prepare nearly one hundred and eighty well-balanced meals during the school term. Assisting them are eleven part-time members of the kitchen staff.



BRYAN ALSHOUSE

Choir . . . Senior Play Cast . . .

"He doesn't break the rules he just bends them a little."

JOHN ANDERSON

FFA . . . Cross Country . . .

"Work fascinates me, I could sit and watch it for hours."

KEITH ANDERSON

Choir . . .

"I like school, all but the classes."

EDDY BAKEBERG

Senior Class President . . . Thespians . . . Junior Play Cast and Crew . . . Senior Play Cast . . .

"Life is a grindstone and whether it grinds a man down or polishes him depends upon the stuff of which he is made."



DONALD BANTA

Choir . . . Football . . . Track . . . Lettermen's Club . . . Junior Play Crew . . . Senior Play Cast and Crew . . . Bus Patrol . . .

"Merry men lead merry lives."

GARNET BERGERSON

Senior Play Crew . . .

"Why worry? Tomorrow is 24 hours away."



GALE BERGGREN

Football . . . Basketball . . . Track . . . Lettermen's Club . . . Senior Play Cast . . .

"He knows that a football game is not the only time when a good line comes in handy."

ARTIE BERGLUND

Basketball . . . Lettermen's Club . . .

"Wisely and slow, they stumble that run fast."

SENIORS



GLORIA BOWMAN

Pep Club . . .

"So modest, quiet and unassuming."

DELMAR BRANUM

FFA Treasurer . . .

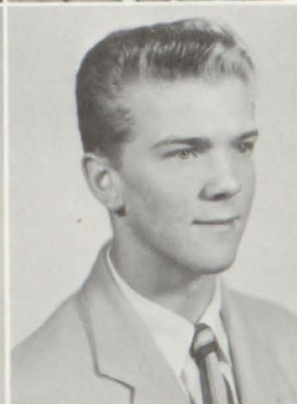
"They said it couldn't be done, so I didn't try."



DENNIS BROWN

Choir . . . FFA . . .

"His smile goes all the way around and buttons in the back."



BARBARA CARDINAL

Pep Club . . . Forester . . .

"Her ways are ways of pleasantness."

DANIEL CARLSON

Football . . . Basketball . . . FFA . . . Lettermen's Club . . .

"I came, I saw, and know I've had enough."



HAROLD CARR

Football . . . Baseball . . . Track . . . FFA . . . Lettermen's Club . . .

"Here I come ready or not."

RALEIGH CARR

FFA . . .

"Be silent and safe, silence never betrays you."

WILLIAM COURNOYER

FFA . . .

"The trodden path is the safest."

BETTY LOU CRETE

GAA . . . Breeze . . . Library Help . . .

"Quietly and calmly she comes and goes."



JAMES DAGASTINO

"A little nonsense now and then is relished by the best of men."

JOHN DAGASTINO

FFA . . .

"Keep quiet and people will think you are a philosopher."





PASQUALE DEL MEDICO

Choir . . . Football . . .

"Two days he never worries about, today and tomorrow."

CAROLINE DOREE

FHA . . . Pep Club . . . Library Help . . .

"A quiet look, a pleasant smile, hard to know, but well worth while."



KENNETH DAMSGARD

"I don't like leap year, they rush me so."

MARY JO DRUMMOND

Pep Club . . .

"She looks harmless, but so does dynamite."

VIRGINIA DUPONT

Band . . . FHA . . . Thespian Treasurer . . .

GAA . . . Forester . . . Breeze . . . Junior . . .

Play Cast and Crew . . .

"This gal has a future plan, and I think it includes a man."



ROBERT EDE

"All things come to him who will but wait, I'm waiting."

DONALD EKBLAD

"Not all dependent or independent, but a mixture wise and pleasant."



JANET ERICKSON

Pep Club . . .

"If there is anything I like more than fun it is MORE FUN."

JUDITH FEHRMAN

FHA . . . Library Help . . . Senior Play Crew . . .

"I'm not always as quiet as I appear."



RENEE FINGAL

Pep Club . . .

"Petite, pert and pretty, with personality plus."

CONSTANCE FRANDLE

Pep Club . . . GAA . . . Junior Play Crew . . .

Senior Play Crew . . .

"Bottle her up and pop she goes."

KAY FUGLIE

Band . . . Choir . . . FHA President and Secretary . . . Thespian Representative . . . Breeze . . . Junior Play Cast and Crew . . . Senior Play Cast and Crew . . . Office Help . . .

"Kindness gives birth to kindness."

GERALD GARDNER

Freshman Class Treasurer . . . Baseball . . .

"Neither bookworm nor social hound but he's mighty nice to have around."

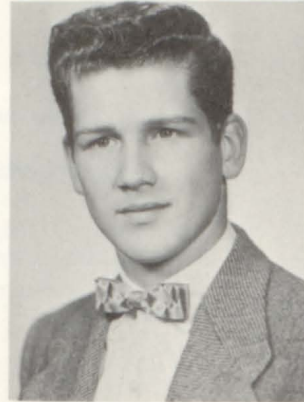
GORDON GARRISON

Choir . . .

"I want to be bashful, but the girls won't let me."

PATRICK HAMELIN

"Classes should be ten minutes long, five to get in and five to get out."

**ALMA HANKE**

Pep Club . . .

"Her eyes light up with the mention of fun."

GERALD HASELBAUER

Choir . . . Junior Class Vice President . . . Football . . . Basketball . . . Track . . . Lettermen's Club . . . Senior Play Cast and Crew . . .

"Why take life seriously, you'll never get out of it alive anyhow."

**HUGH HEHNER**

Football . . . Track . . .

"When a boy doesn't even look at girls, he's beginning to notice them."

JAMES HEISLER

Sophomore Class President . . . Football Co-Captain . . . Baseball . . . Lettermen's Club President . . . Student Council . . . Junior Play Cast and Crew . . . Senior Play Cast and Crew . . .

"Girls are bothersome, but I like to be bothered."

MARY HOLLIHAN

FHA . . . Pep Club . . . Forester . . . Junior Play Crew . . . Senior Play Crew . . . Library Help . . . Office Help . . .

"Her Parallel."

**CAROL HELGESON**

Pep Club . . . GAA

"A light heart lives long."

MARGARET HOLLIHAN

FHA . . . Pep Club . . . Forester . . . Junior Play Crew . . . Senior Play Crew . . . Library Help . . . Office Help . . .

"No one but herself could be her parallel."





JUDITH HOLTZBAUER

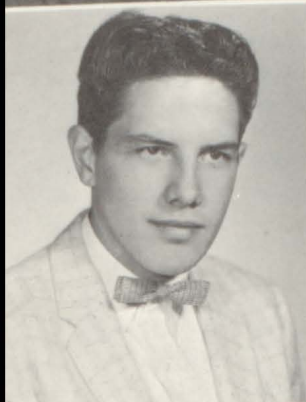
Pep Club . . . GAA . . .

"A sunny disposition is the very soul of success."

ELAINE HVINDEN

FHA . . . Tumbling . . . Pep Club . . . GAA . . . Library Help . . .

"I could be quiet, but look at all the things that would be left unsaid."



ROBERT JASINSKI

FFA . . . Football . . . Cross Country . . . Basketball . . . Track . . . Lettermen's Club . . .

"The reason why I grew so tall was to escape girls, that's all."

RICHARD JOHNSON

Homecoming Escort . . .

"Only a select few can fly with the owls at night and keep up with the eagles during the day."

SHARON JOHNSON

(Transfer From South St. Paul)

Forester . . . Senior Play Crew . . . Office Help . . .

"She is the center of ah-traction."

DAVID KAMMERER

Bus Patrol . . .

"When he steps in the fun begins."

GERALD KARI

Cross Country . . . Basketball Co-Captain . . . Track . . . Lettermen's Club . . . Junior Play Cast and Crew . . . Senior Play Cast . . . Homecoming Escort . . .

"A personality full of ginger and good humor."

HERMANN KAULS

Choir . . . Football . . . Basketball . . . Track . . . Lettermen's Club . . . Forester . . . Breeze . . . Junior Play Stage Manager . . . Senior Play Cast and Stage Manager . . . Homecoming Escort . . .

"You don't need a hook if your line is good."

CAROL KROIS

Pep Club . . .

"Passing a shy smile."



GLEA KINNEMAN

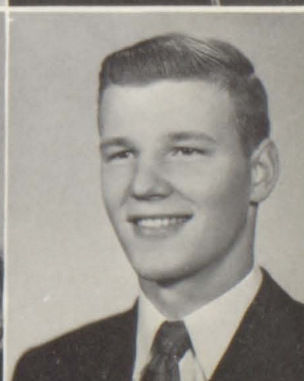
Choir . . . Pep Club . . . Double Trio . . .

"She's happy and gay in a pleasing sort of way."

ZIGUARDS KAULS

Football Co-Captain . . . Basketball Co-Captain . . . Baseball . . . Track . . . Lettermen's Club . . . Forester . . . Senior Play Cast . . . King Of Hearts . . .

"All great men are dead and I'm not feeling so well."



**KAREN KRUEGER**

Band . . . Junior Class Secretary . . . FHA Vice
President . . . Thespians . . . GAA Treasurer
. . . Student Council . . . Breeze . . . Junior
Play Cast and Crew . . . Senior Play Cast and
Crew . . . Office Help . . .

"A cheerful girl with ways that please."

EDWARD LOCKE

Football . . .

"Content to let the world wag by as it will."

**JEANETTE LUNDE**

Choir . . . Pep Club . . .
Forester . . .

"We can't worry and be
merry at the same time."

**DENNIS MACK**

Football . . . Baseball . . . Lettermen's Club . . .
Senior Play Cast . . .

"What someone won't think of, he will."

MARLYS MARIER

Choir . . . Junior Class President . . . FHA Song
Leader . . . Thespian Representative and Co-
clerk . . . Pep Club . . . GAA Secretary . . .
Student Council President . . . Forester . . .
Breeze . . . Junior Play Cast and Crew . . .
Senior Play Student Director . . . Cheerleader
Captain . . . Sophomore Sweetheart . . . Home-
coming Queen Attendant . . . Triple Trio . . .
Girls' Sextet . . .

"Beauty is power, a smile its sword."

**MARY LYNN MARTZ**

Choir . . . FHA . . . Thespian Co-clerk . . .
Pep Club . . . GAA . . . Forester . . . Breeze
Editor . . . Junior Play Cast and Crew . . . Sen-
ior Play Cast and Crew . . . Triple Trio . . .
Girls' Sextet . . .

"She is always smiling, forever full of fun,
cheerful in doing whatever must be done."

DAVID McGOVERN

Band . . . Thespians . . . Forester . . . Junior
Play Cast . . . Senior Play Cast and Crew . . .

"Ambition is this great follower of the sciences."

DONALD MORTENSON

Basketball . . . Baseball . . .

"Care sits lightly on his shoulders."

JOHN OLSEN

Football . . . Wrestling . . .

"Make haste slowly."

**DONALD PALMER**

Choir . . . FFA . . .

"Patience, and shuffle the cards."

JOHN PALMER

Choir . . . FFA . . .

"I'm a 'comin' — I think —."





DARLENE PEARSON

Band . . . FHA . . . Thespians . . . Junior Play Crew . . .

"Her eyes sparkle with the mischief in her heart."

GREGORY PEPIN

Freshman Class Vice-President . . . Football . . . Basketball . . . Baseball . . . Track . . . Lettermen's Club . . .

"The only way to have a friend is to be one."

DEAN PETERSON

FFA . . .

"Ask me no questions and I'll tell you no lies."

KENNETH PIEHL

(Transfer From Backus)

Freshman Class Vice President . . . Sophomore Class Secretary . . . Basketball . . . Baseball . . . Lettermen's Club . . . Junior Play Cast . . .

"Manners are the happy ways of doing things."

RUTH ANNE PREINER

Sophomore Class Treasurer . . . Junior Class Treasurer . . . Senior Class Treasurer . . . FHA President . . . GAA . . . Forester . . . Office Help . . . Homecoming Queen . . .

"Her who fairest does appear crown her queen for all the year."

YVONNE PROULX

Pep Club . . .

"Smiling, laughing and ready for fun."

PAUL RASMUSSEN

Football . . . Basketball . . . Track . . . Lettermen's Club . . . Junior Play Cast and Crew . . . Senior Play Cast and Crew . . .

"They tell me Romeo was quite a lover too."



DONALD REESE

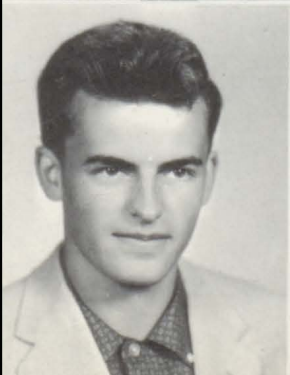
Football . . . Basketball . . .

"He can't get up with the sun, he's out too late with the daughter."

CLYDE REHBEIN

Band . . . Choir . . . Senior Class Secretary . . . Junior Play Cast and Crew . . . Senior Play Cast and Crew . . .

"He fairly twinkles with mischief."



KENNETH RENARD

"People who make no noise are dangerous."

LUKE RIOPELE

FFA . . .

"I can believe anything provided it's incredible."



EDITH ROBINSON

FHA . . . Library Help . . .

"She's too agreeable to have an enemy."

GARY ROSENBERG

Senior Class Vice President . . . Junior Play Crew . . . Senior Play Cast . . . Homecoming Escort . . .

"Too much wine, woman, and song, I guess I'll have to give up singing."



RICHARD RUDIN

Band . . . Sophomore Vice President . . . Thespian President . . . Student Council Vice President . . . Golf . . . Junior Play Cast . . . Senior Play Cast and Crew . . . Alternate Boys' State . . .

"Good humor is wisdom and goodness combined."

JUNE SADOWSKI

FHA . . . Thespians . . . Pep Club . . . Junior Play Crew . . . Senior Play Crew . . . Library Help . . . Bus Patrol . . .

"A good disposition is more valuable than gold."

ALICE SANDBERG

FHA Parliamentarian . . . Pep Club . . . GAA Secretary . . . Forester . . . Breeze . . . Junior Play Crew . . . Senior Play Cast . . . Office Help . . .

"A specialist in the philosophy of mischief."

PATRICIA SCHATZ

Band . . . Thespians . . . Pep Club . . . GAA . . . Forester . . . Junior Play Crew . . . Senior Play Crew . . .

"Smiling and tall and liked by all."



GEORGE SCHWINGLER

"Beware! I may do something sensational yet."

DAWNA SHOSTEN

[Transfer from Taylors Falls.]

Choir . . . Pep Club . . . Homecoming Queen Attendant . . .

"Trim, neat, short, and sweet."



BONNIE SOVIA

Band . . . Choir . . . FHA . . . Thespians . . . Forester . . . Breeze . . . Junior Play Cast and Crew . . . Senior Play Crew . . . Girls' Sextette . . .

"Happy and light of heart."

JEAN STANEK

Band . . . Choir . . . FHA . . . Thespians . . . Library Help . . . Junior Play Cast . . . Senior Play Crew . . . Double Trio . . .

"You get out of life just what you put into it."



DARLENE SIMMONS

Choir . . . FHA . . . Thespians . . . Pep Club . . . Forester Co-editor . . . Breeze . . . Junior Play Student Director . . . Senior Play Cast and Crew . . . Girls' State . . .

"Makes the best of everything and thinks the best of everyone."

JOANNE STANEK

Band . . . Choir . . . FHA . . . Thespians . . .
Library Help . . . Junior Play Cast and Crew
. . . Senior Play Crew . . .

"Everyone appreciates a willing worker."

RICHARD STARK

Homecoming Escort . . .

"Once I said women should be seen 'not heard,
and they told me to shut up."

MAVIS STELTZNER

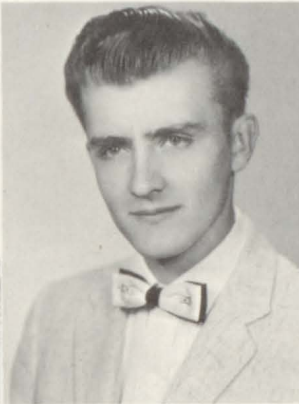
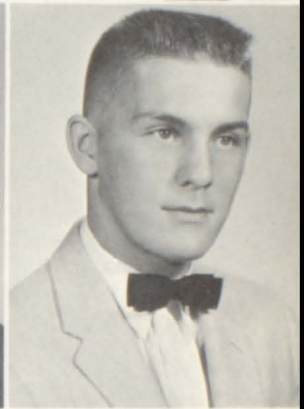
Band . . . FHA Vice President . . . Thespian
Secretary . . . GAA . . . Forester Co-Editor . . .
Library Help . . . Junior Play Cast and Crew
. . . Senior Play Crew . . . Alternate Girls'
State . . .

"A pretty girl is like a melody."

EUGENE STERNBERG

Football . . . Basketball . . . Baseball . . . Let-
termen's Club . . .

"Life is such a daily thing."



STEVEN STOCKDILL

"Ah, why should life all labors be?"

ERNEST STRANDBERG

"I'm tired of four walls and the ceiling, I have
need for the road."

JOYCE STRINGER

FHA . . . Pep Club . . . GAA . . . Forester
. . . Office Help . . . Junior Play Crew . . .
Senior Play Cast . . . Ag Secretary . . .

"A busy person never has time for tears."

KAREN TAPPE

Choir . . . Pep Club . . . GAA . . . Junior Play
Crew . . .

"I'm learning a lot but school interferes."

EVALINA TURNQUIST

Band . . . FHA . . . Thes-
pians . . . GAA . . .
Forester . . . Junior Play
Cast and Crew . . . Sen-
ior Play Cast and Crew
. . .

"My Friends are my
wealth."

LOIS TAYLOR

FHA . . . GAA . . . Pep Club . . . Forester
. . . Senior Play Cast and Crew . . . Bus
Patrol . . .

"She's just what she is, what others report, a
girl, a pal, a friend, a good sport."

DANIEL THOMPSON

Choir . . . Basketball . . .

"I can resist anything but women."



LORETTA URMAN

Choir . . . Pep Club . . . Junior Play Crew . . .
Senior Play Cast and Crew . . .
"The life of her class but the death of her
teachers."

ANNITA VIDEEN

FHA . . . Pep Club . . . GAA . . . Library Help
. . . Office Help . . . Junior Play Cast and
Crew . . . Senior Play Cast . . .
"Happy am I, from care am I free."

STEPHEN VOGEL

Choir . . .
"Quiet and calm, but not bashful."

DONALD WAHLBERG

FFA . . .
"The door was open so I just walked in."



SANDRA WAHLQUIST

FHA . . . Pep Club . . .
"True to her word, work, and friends."

DIANNE WARD

Choir . . . Thespians . . . Pep Club . . . GAA
. . . Forester . . . Junior Play Crew . . . Senior
Cast and Crew . . . Homecoming Queen At-
tendant . . .
"Personality to a woman is what perfume is to
a flower."



NANCY WEBB

FHA . . . Pep Club . . . GAA . . . Breeze . . .
Junior Play Crew . . . Senior Play Cast and
Crew . . .
"The reason why she shines is because the
moon is in her heart (there's a man in every
moon.)"

LLOYD WEST

Band . . . Thespian Vice-President . . . Senior
Play Cast and Crew . . .
"Don't dare me, I might surprise you."



JOYCE WINCH

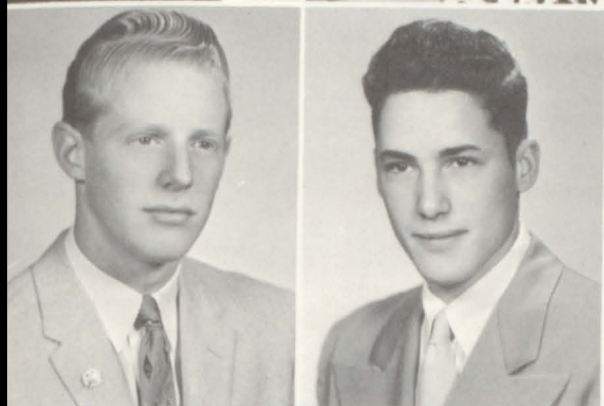
FHA . . . Pep Club . . . Library Help . . . Shop
Secretary . . .

"I know a lot, but I can't think of it."

MARILYN WINICK

Freshman Vice-President . . . Thespians . . .
Pep Club . . . GAA . . . Student Council . . .
Forester . . . Breeze . . . Junior Play Cast and
Crew . . . Senior Play Cast and Crew . . .
Homecoming Queen Attendant . . .

"What's the world afraid of, after all I'm here."



ROBERT WITHAM

Choir . . . Football . . . Baseball . . . Track
. . . Lettermen's Club . . . Senior Play Cast and
Crew . . .

"Good ole school days, and oh! those nights."

RAYMOND YOUNG

FFA . . .

"Boys will be boys."



RICHARD CARLSON

Choir . . .

"Opportunity comes to every one: The trouble is that
it usually comes disguised as work."

RICHARD LEVINE

"If mischief is a part of heaven, he's on his way."

ALAN OLSON

"It's not what we do, it's what we get away with."

JOANNE WORTH

Choir . . . Pep Club . . . Junior Play Cast and Crew
. . . Senior Play Cast and Crew . . . Library Help . . .

"Give me life, liberty and the pursuit of men."

DONALD ZAK

Football . . . Basketball
. . . Track . . . Letter-
men's Club Secretary-
Treasurer . . . Senior
Play Cast . . .

"Popular, good looking
and personality plus."



-FALL-

As fall's brilliant colors fade, and the autumn leaves drift to the ground, FLHS activities aren't subdued in the least.

October days are filled with colorful hours of practice for the Senior Class play; Crowds enjoyed barbecued turkey at the annual Fall Festival; special "student issues" of **BREEZE** are distributed; and on Friday nights, cheering spectators watch the East Conference Champs score touchdown after touchdown.

Here, then, is how you spent your fall . . .







FIRST ROW: Rudy Olson, Allen Klinefelter, Leon Erickson, Donald Banta, Harold Carr, Jim Heisler, John Olsen, Mike Trepanier, Dennis Mack, Jerry Haselbauer, Greg Pepin. **SECOND ROW:** Student Manager; Andy Kauls, Thomas Herder, Donald Zak, Gary Zak, Juris Kauls, Dave Stankeivicz, Jack Lightfoot, Tony Du-

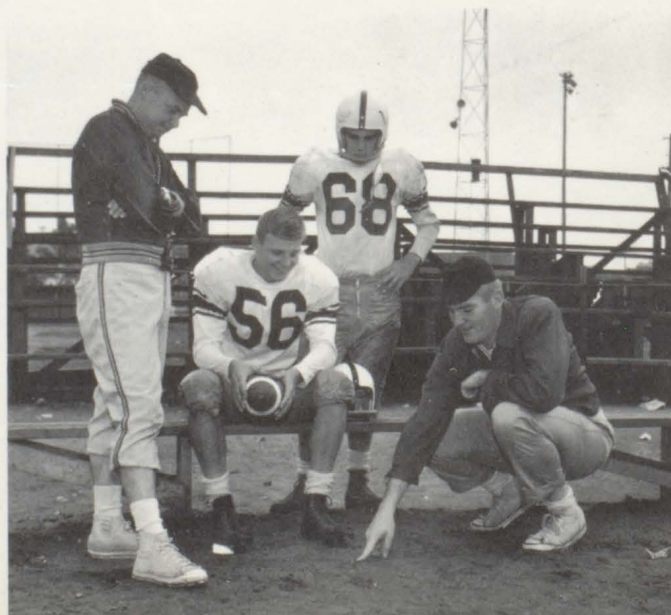
bois, Duane Boyer, Student Manager; Jim Preiner. **THIRD ROW:** Head Coach; Kenneth Hanson, Gale Berggren, Ziggy Kauls, Gene Sternberg, Arlyn Tolzmann, Edward Locke, Kenneth Anderson, Paul Rasmussen, Bob Witham, Bob Jasinski, Assistant Coach; John Schumacker.

FLHS.... 0	St. Paul Park	6
FLHS.... 19	Chisago City	7
FLHS.... 7	Rush City	0*
FLHS.... 6	Moose Lake	6*
FLHS.... 19	Lindstrom-Center City ...	7*
FLHS.... 45	Pine City	14*
FLHS.... 37	North Branch	12*
FLHS.... 33	St. Paul Washington ...	6

*Conference Games

FOOTBALL

Coaches Ken Hanson and John Schumacher discuss game strategy with co-captains Ziggy Kauls and Jim Heisler.



RANGER GRIDDERS POST 6-1-1 SLATE

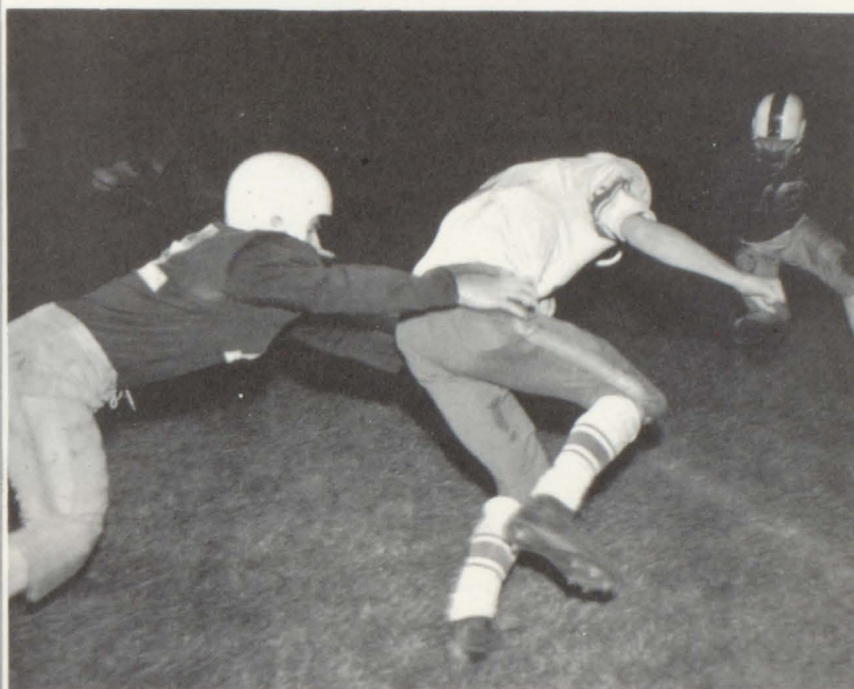
The injury-riddled Rangers opened their season by dropping the opener to St. Paul Park 0-6. Recovering from their first loss the Rangers put together a strong defense with their offense and dumped Chisago City 19-7. Opening their conference slate, Forest Lake defeated Rush City 7-0. Traveling to Moose Lake the Rangers pulled the game out of the fire with a 15 yard TD pass, with 24 seconds remaining, to give them a 6-6 tie.

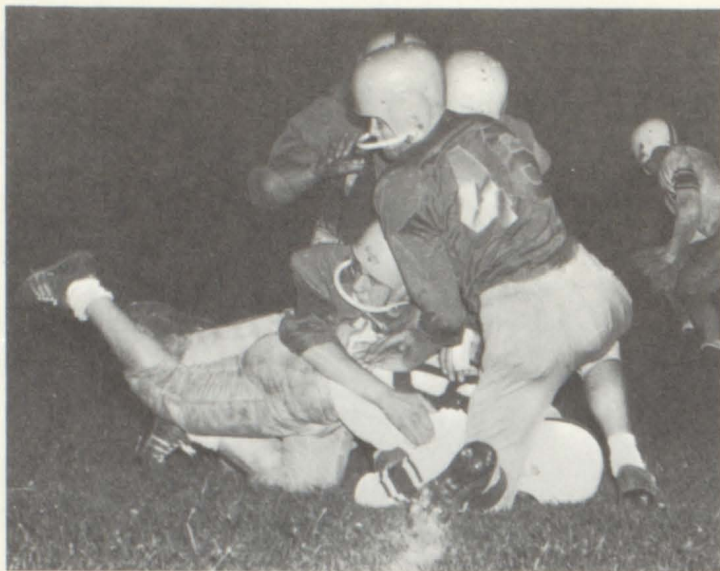
From here on the Rangers couldn't be stopped. They rambled over Chi Hi 19-7 and "Peeled the Pine" before a capacity Homecoming crowd 45-14. Moving to North Branch the Rangers dumped the Vikings by the score of 37-12. Coming home for their final, the Rangers defeated the Washington Prexies 33-6.

Starting the year with injuries the Rangers recovered to build one of the strongest teams coached by Mr. Kenneth Hanson, assisted by Mr. John Schumacher, in Forest Lake. Leading the vicious-tackling, hard-blocking line were Co-Captains Jim Heisler, and Zig Kauls, along with Gene Sternberg, Leon Erickson, Bob Jasinski, Paul Rasmussen, and Gale Berggren. Heading the inexperienced, but increasingly effective backfield was Don Zak, with the aid of Jerry Haselbauer, Greg Pepin, Juris Kauls, David Stankeivicz, and Rudy Olson.

Forest Lake placed six men on the District 25 All-Conference team. These players include Co-Captains, Jim Heisler and Zig Kauls, Gale Berggren, Don Zak, Jerry Haselbauer, and Gene Sternberg.

During the year it was the strong Ranger forward wall which kept them in the ball games. Hard and vicious tackles by the strong linemen proved to be the key of success to the District 25 conference champions. What started out as a bleak season turned to one of the most successful seasons the Rangers have had in recent years.





Rush City defenders pounce on Ranger back Jerry Haselbauer after a short gain.



Don Zak plows through Pine City's defense.

"B" TEAM

FL....32	Cambridge	0
FL....20	St. Paul Park	6
FL....20	Elk River	0
FL....6	St. Paul Park	18
FL....20	Circle Pines	0

FIRST ROW: Left to Right: Tom Herder, Gary Zak, Ronnie Schatz, Tony Dubois, Jack Lightfoot, Rudy Olson, Dennis Booren, Carl Jensen, John Fehrman. **SECOND ROW:** Arlyn Tolzman, Allan Klinefelter, Wayne Gilbertson, Dean Gardner, Darrell Thurnbeck, Dick Cohoes, Mike Trepanier, Henry Gregoire, Charles Patrin,

Warren Kunshier, George Vedder. **STANDING:** Milo Shoberg, Ken Sohlin, Bob Erickson, Stan Mitthun, Dick Norton, Ray Quigley, Carson Turnquist, Jim Priener, Jim Taylor, Jim Yale, Bob Konabeck, Orval Matheson, Ronnie Husnik, Tom LaMere, Mike Huseman, Ken Mack, Coach Frank Terry, Coach Leroy Stang.



Wind, rain, and very low temperatures, along with much excitement and happiness set the atmosphere for Forest Lake High School's 1958 Homecoming, October 10.

Large crowds jammed FL's baseball field to witness a bonfire pep rally, sponsored by the Student Council, the night before Homecoming. A giant fire kept students warm as they cheered for their team, queen candidates, and all those playing a part in the week's festivities.

Friday, the final day of Homecoming saw the traditional parade, pep fest, game, and the high point to a week of suspense and excitement, the crowning of Ruth Anne Preiner, 1958 Homecoming Queen.

Despite cold weather, Homecoming spirit filled the air, as students cheered the Rangers on to 'Peel the Pine' 45 to 14. As a climax to the victorious game, Ruth Anne reigned over the annual Homecoming dance.

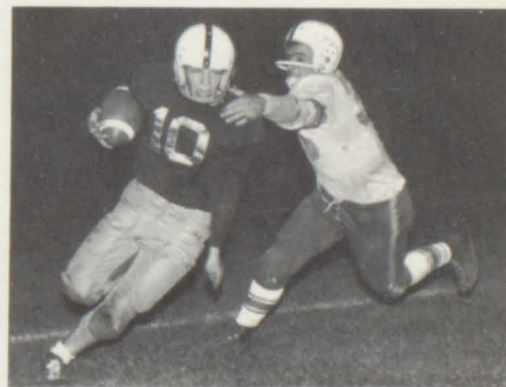
Weeks of careful planning and many long hours of hard work by teachers and students went into bringing back the old school spirit to the grads, and into making this one of the biggest Homecomings ever, never to be forgotten by the seniors of '59.



Whol Me?



'Twas a cold, cold day.



Pine City player grabs "Pine Peeler" in Homecoming meet.



Queen Ruth Anne is congratulated by player Bob Jasinski, who, with his teammates won the Homecoming tilt for her majesty.



Band member at work in Homecoming parade.



Something new was added this year as Jim Heisler lights a bonfire which was followed by a pep rally and sockhop.



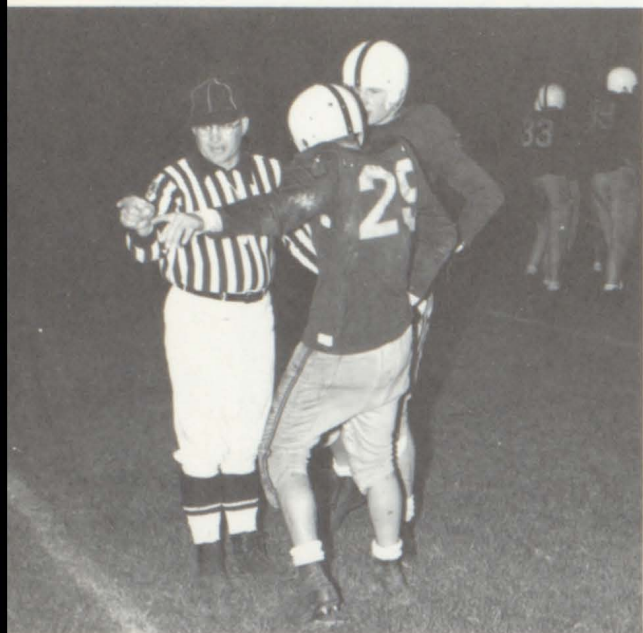
Queen Ruth Anne waves to her loyal subjects after being crowned during half time festivities.



Ranger back Jerry Haselbauer romps past two Dragon line-men for a sizable gain in the Homecoming clash.



Queen Ruth Anne and her attendants, Marlys Marier, Marilynn Winick, Diane Ward and Dawna Shosten, pose for a formal portrait at the victory dance.



Maroon and Gold's Co-Captains Ziggy Kauls and Jim Heisler get a penalty explanation from referee.



Ah! The Dancel

WOW! WE WON!!

There was reason indeed for Debbie Tyler to jump for joy as the Forest Lake Rangers walloped the Pine City Dragons 45 to 14 in Homecoming clash.





STANDING, Left to Right: Leon Houle, William Cruse, William Morehead, Artie Berglund, Jerry Kari, Leo, Houle, Bob Shoberg, Coach Kerwin Engelhart. **FIRST ROW:** Peter Edstrom, Richard Kun-

shier, Jim Degendorfer, Steve Kari, Bob Morehouse, John Anderson, Loren Nickelson, Allen Reese.

A Ranger cross-country team was entered for the first time in full-scale competition this year under the tutorship of Coach Kerwin Engelhart.

Their efforts were rewarded with a District 25 championship and a trip to the regional tourney at Grand Rapids, where they placed eighth as a team, and Jerry Kari placed eighth in individual scoring — good enough to rate him a trip to the state meet at Lake Nokomis. There Kari finished twentieth in a field of 134 of the top harriers in the state.



Coach Engelhart times harriers as they prepare for their trip to Grand Rapids.



Mr. Bunge shows co-student director, Joanne Stanek and Light Manager, Tom Corbett, light procedures for the play "Liliom."

The Senior Class of Forest Lake High School
presents

"LILIOM"

A legend in seven scenes and a prologue.
By Ferenc Molnar

English text by Benjamin F. Glazer
Produced under the direction of Eugene H. Bunge

SYNOPSIS OF SCENES

Prologue: An amusement park on the outskirts of Budapest.
First Scene: A lonely place in the park.
Musical Selection: "If I Loved You"
Second Scene: The photographic studio of the Hollunders.

Intermission

...s scene two.
... "What's The Use of Wonderin'."
...l embankment outside the
...ne two.

...rmission
...the beyond.
...I'll Never Walk Alone
...teen years later.
...by during intermission
...pians, the Forest
...ganization

Sixteen years later finds Diane Ward as Julie and Marilynn Winick as Louise portraying Liliom's family.





Thespians learn the art of stage make-up.



Biology students turn chef for their annual biology banquet.

FFA boys prepare to "bring 'em back alive."



ACTIVITIES



Director, Mr. Russell Rose.



The Choir Council is a newly formed organization set up to solve choir problems.
LEFT TO RIGHT: Kathy Nickelson, Kay Hallberg, Gail Anderson, Clyde Swenson, Mr. Rose, Arlyn Tolzmann, Danny Thompson, Sharon De Long, Loretta Urman, Marlys Marier.



CHOIR

The Forest Lake High School choir, one of the busiest groups on campus, is again an outstanding organization, with Mr. Russell Rose as director.

In addition to their regular schedule of activities around school, the choir participated in the Fall Dedication program, joining ranks with the band in the climactic "America, Our Heritage" number. In December they prepared and presented the annual Christmas program with the band and thespians and gained recognition in the choir clinic at Taylor Falls.



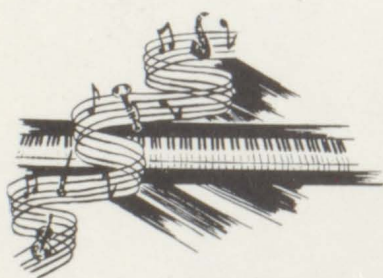
STUDENT COUNCIL



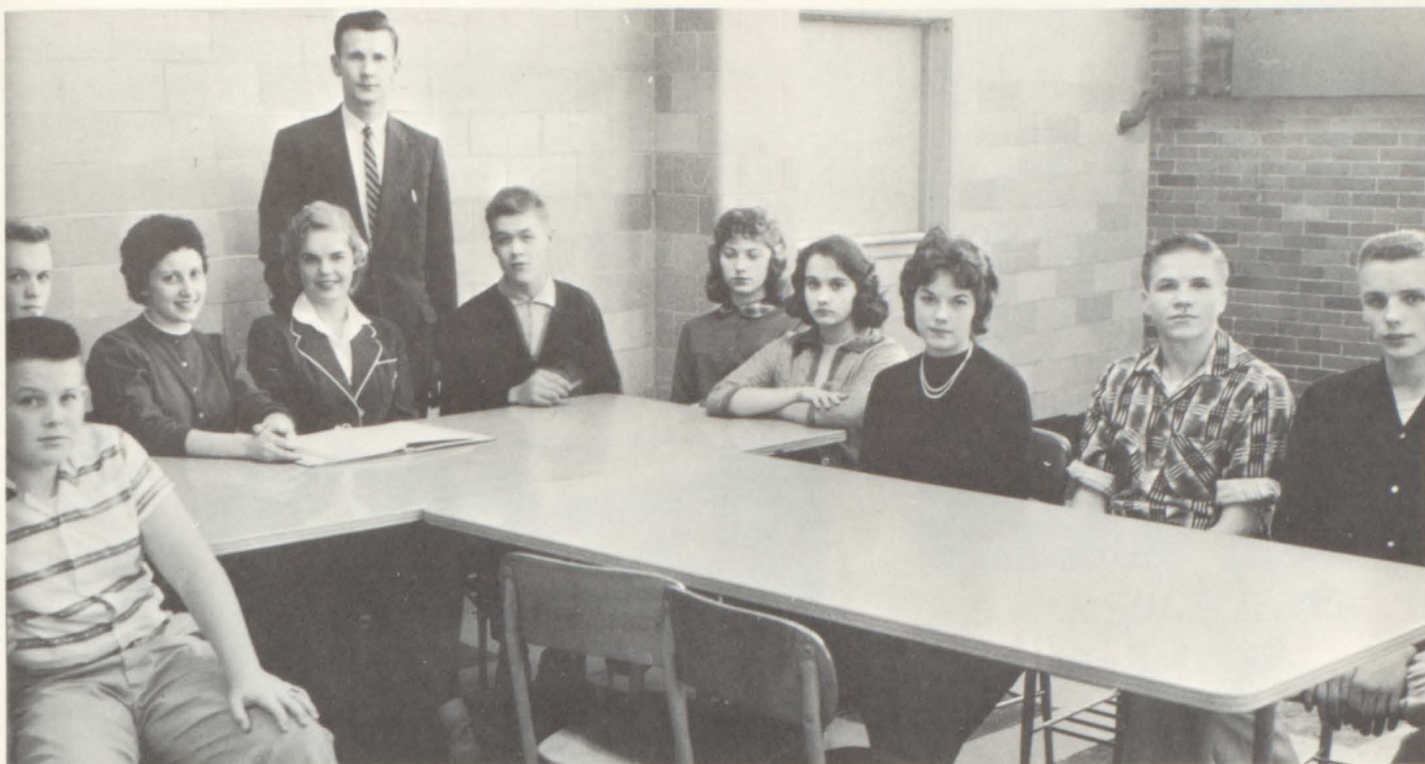


CHOIR CANDIDS

The Choir's newly formed sophomore Triple Trio consists of, **FIRST ROW**, Left to Right: Valerie Dupre, Jeanette McPhail, Barbara Heisler. **SECOND ROW**: Kathy Nickelson, Mary Kay Brisson, Sue Pepin. **THIRD ROW**: Janet Marier, Kay Hallberg, Sandra Peterson.



The Choir's permanent senior sextet consists of, **LEFT TO RIGHT**: Sharon DeLong, Marlys Marier, Joanne Stanek, Mary Lynn Martz, Karen Marcott, Gail Anderson.



LEFT TO RIGHT: Jim Yale, Richard Rudin, Marlys Marier, Gail Anderson, Mr. Rank, Clyde Swenson, Karen Krueger, Marilynn Winick, Eileen Fuglie, Juris Kauls and Rudy Olson.

STUDENT COUNCIL

Students and council members are coming to know quiet-spoken, and helpful Mr. Richard Rank, Council adviser and Counselor, new to the Forest Lake School.

Student Council is mainly for student opinion and representation. The 15 Student Council members from grades 7—12 are elected by their fellow students. Under the direction of Mr. Manley and a new advisor, Mr. Richard Rank, the Student Council participates in all matters of concern to our school. Some of these activities are: assisting with Homecoming activities, guides for many social functions, coat checking at home basketball games, and many other activities. The Student Council promoted and ran a student opinion poll this year. Members of the Student Council represented us at the state council convention in Austin.



BAND



1958 — 59 has again been another event-packed season for the Forest Lake School Band.

Under the baton of Rollin Nelson, the marching band has participated in the Minnesota Centennial Parade, the dedication of highway 61, the annual Fall Festival activities, and half-time routines.

After being shuffled from room to stage and stage to new quarters, the concert band settled down to business and undertook a season of various activities: playing for dedication of new school buildings, pep fests, the Christmas program, and contests.

It has been a busy year for all involved, but the success of this organization has compensated for all the hard work put in by the director and members.





Forest Lake High School's marching band.



Mr. Rollin Nelson, Band Director.





Bass drum player hits the down beat.

French Horn Players, Carolyn Banta, Gail Anderson, Judy Thurnbeck.



LEFT TO RIGHT: Diane Warner, Roberta Anderson, Joyce Gulasch, Valerie Dupre, Peggy Lehman.



Thespian members Marilyn Winick and David McGovern earn thespian points by preparing new canvas for further thespian productions.

THESPIANS

Thespian board discuss problems of the club. **LEFT TO RIGHT:** Mr. Bunge; adviser, Barbara Broadbent, Marlys Marier; clerk, Mavis Steltzner; secretary, Virginia Dupont; treasurer, Mary Lynn Martz; clerk, Kay Fuglie, Richard Rudin, president. **STANDING:** Lloyd West; vice president, Clyde Swenson.





BACK ROW, Left to Right: Sue Pepin, Kay Hallberg, Grace Fuglie, Karen Marcott, Carol Anderson, Hermann Kauls, Barbara Broadbent, Janet Marier, Judy Brine, Bonnie Sovia, Nancy Petersen, Mary Lynn Martz, Sharon

Peterson, Alice Sandberg, Joanne Odermatt, Nancy Webb, Mary Fife. FRONT ROW: Sharon Bloom, Darlene Simmons, Marilynn Winick, Betty Lou Crete, Marlys Marier, Barbara Heisler, Marsha Yost.



BREEZE

Editor Mary Lynn Martz with assistant editors Sharon Peterson and Nancy Petersen, plan dummy sheet for further editions of the **BREEZE**.

With the advent of special "student issues," new editorial policies, and numerous "contemporary" cartoons, **BREEZE** editor Mary Lynn Martz and her assistant editors, Nancy Petersen and Sharon Peterson, undertook the responsibility of putting 34 editions of the paper to "bed."

Along with the usual "straight" news coverage, new departments, coinciding with the **BREEZE** policy to promote student interest, were added in the form of a "Letters to the Editor" section, and exchange column, and feature-type reports of many school activities.



This year as in previous years the **FORESTER** staff had to start in the first day of school. Co-editors and staff had to meet four deadlines, two of which were due before Christmas.

Every Tuesday and Thursday and sometimes on Saturdays you could find the co-editors and Mr. Rafferty, laying out dummy pages, identifying pictures, writing and rewriting copy and rushing to make the publishers deadlines.

A new type of cover and the differences in layouts, make this year's book different in nature from yearbooks in the past years.



Co-editors Mavis Steltzner and Darlene Simmons discuss pictures to be used in this years' book.

FORESTER



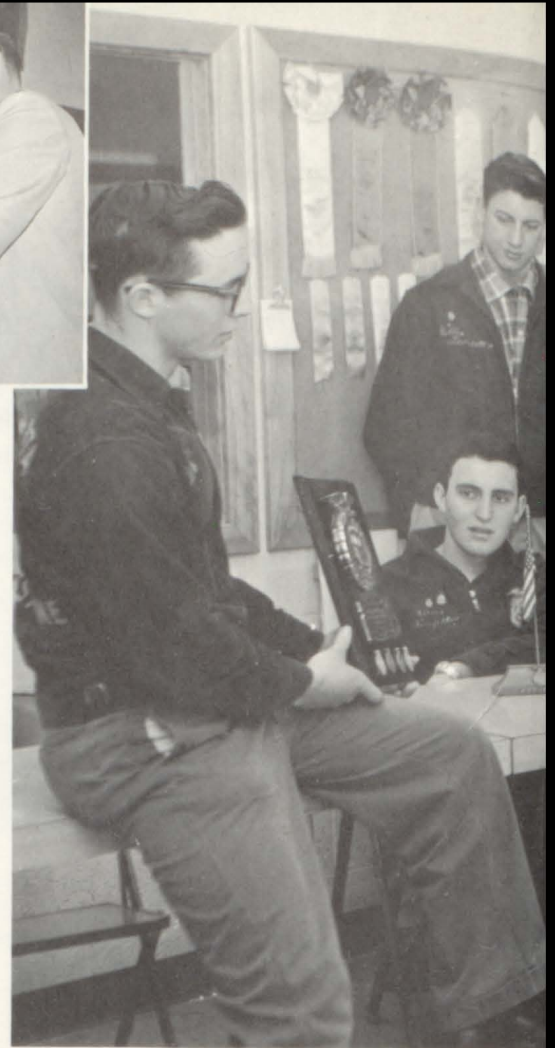
LEFT TO RIGHT: Lois Taylor, Virginia Dupont, Ruth Anne Preiner, Bonnie Sovia, Joyce Stringer, Mary Hollihan, Darlene Simmons, Mavis Steltzner, Jeanette Lunde, Sharon Johnson, Marilyn Wi-

nick, Alice Sandberg, Zig Kauls, David McGovern, Margaret Hollihan. **SITTING:** Diane Ward, Evalina Turnquist, Marlys Marier, Hermann Kauls, Mary Lynn Martz.





Mr. Sandager shows Greenhands the principles of Electrical wiring.

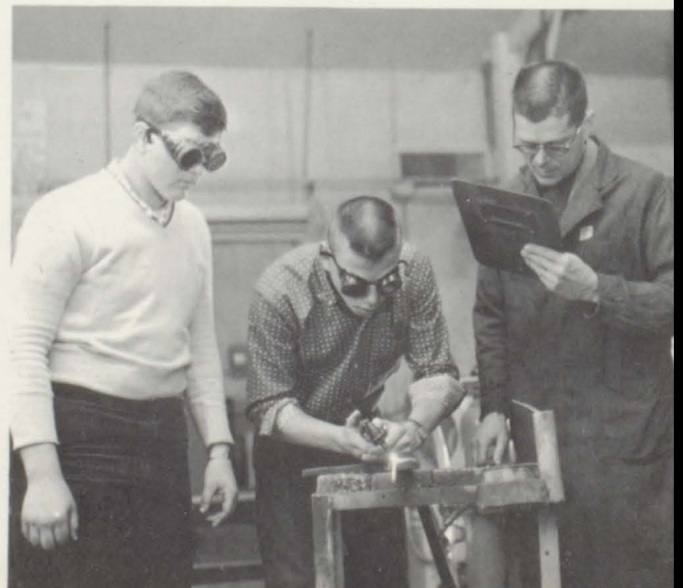


Alfred Miron, President, conducts the weekly FFA meetings in the Ag Building.

One of the FFA's many projects is to take an active part in the Fall Festival as seen here when it was time to judge the cattle.



Mr. Kulbeck shows the boys the right way to hold the cutter.





President Alfred Miron shows excutive Board and the gold emblem which was presented to the Chapter at the annual FFA convention at Kansas City. **LEFT TO RIGHT:** Alfred Miron, Allen Klinefelter, David Nickelson, Mr. Snadager, John Fehrman, Delmar Branum, Bernard Knauff. **SECOND:** Tom Bowens, Don Palmer, Clyde Swenson, Leon Houle, Fran Faymoville, Earl Halley, John Palmer.



"Learning to do, Doing to learn, Earning to live, Living to serve." is the motto of the Future Farmers of America. Always active, the chapter, with 74 members and 22 state farmers, has taken part in such things as the State Fair, numerous judging contests, public speaking contests and Forest Lake's annual Fall Festival. The boys learn through their projects and also earn money to pay for them. For fun activities, they have joint parties with the FHA and recreation meetings.

FFA 1959's Sweetheart Kathy O'Brien





LEFT TO RIGHT: Kathy Sullivan, Mary Sue Lind, Nancy Dickey, Judy Thurnbeck, Kathy Sedlacek, Janine West, Valerie Dupre, Sandra Waldo, Debbie Tyler, Delores Johnson, Marilyn Winick, Peggy Lehmann.

TUMBLING



G. A. A.

GAA and tumbling have been very active this year. Starting a girl's basketball team was the GAA's new project. Tumbling was performed at several pep fests and during the halves at some of the home games.





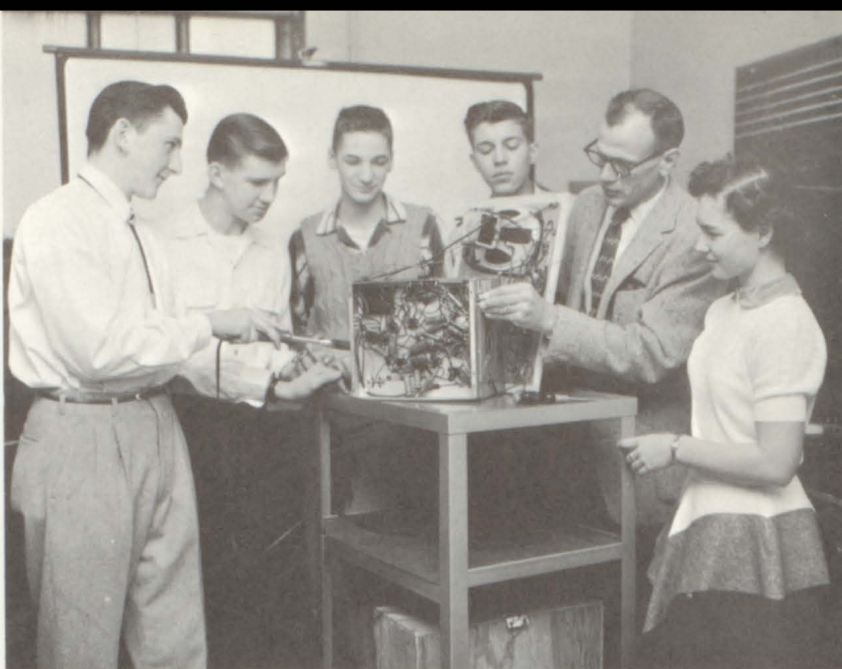
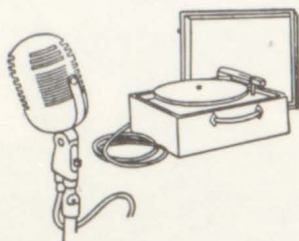
FHA OFFICERS: Alice Sandberg, Parliamentarian; Annita Videen, Historian; Ruth Anne Preiner, President; Kathy Nickelson, Song Leader; Carolyn Banta, Secretary; Judy Brine, Treasurer.



FHA members at work during the Fall Festival.



AUDIO- VISUAL



LEFT TO RIGHT: Don Dow, Dean Haynes, Tom Corbett, Bob Shogren, Mr. Markuson, Mary Lou Carter.

LIBRARIANS

LEFT TO RIGHT: Sherrol Swanson, Karen Deskins, June Sadowski, Patricia Anderson, Gloria Grubbs, Kathy Sullivan, Sharon Behm, Judy Williams, Joyce Winch, Betty Lou Crete, Betty Lou Waha, Paula Brust, Judy Alcock, Mrs. Thea Carpenter.



LETTERMEN: Zig Kauls, Don Zak, Gale Berggren, Eugene Sternberg, Jim Heisler, Jerry Haselbauer, and Lettermen Advisor, Mr. Hanson, look over All-Conference Certificate.



LETTERMEN'S CLUB

FIRST ROW: Harold Carr, Mike Trepanier, Paul Rasmussen, Zig Kauls, Juris Kauls, Ed Locke, Don Zak, Don Banta, Jerry Haselbauer, Dennis Mack. **SECOND ROW:** Leo Houle, Rudy Olson, Ken Anderson, Leon Erickson, Eugene Sternberg, Greg Pepin, Jim

Heisler, Dave Stankeivicz, John Olson, Tony Dubois. **THIRD ROW:** Jerry Kari, Leon Houle, Gale Berggren, Gary Zak, Bob Jasinski, Artie Berglund, Bill Morehead, Bob Moorhouse, Jack Lightfoot, Bill Cruse.







-WINTER-

As the snow flies, football fans move indoors for basketball; practice begins for the annual Christmas program, Christmas carols echo in the halls after morning song fests; and winter falls on FLHS with days crammed with activity.

"January's Thaw" brings with it, a year begun with resolutions and thoughts of future vocations. Thespian members plan their February production; the Rangers rank high among state teams; wrestling is a new sport at FL and placed very high; and both sophomore and FFA pick their Valentine royalty.

And so the winter came and went.

Do you remember . . . ?





Left to Right: **FIRST ROW:** David Stankeivicz, Mike Trepanier, Greg Pepin, Warren Kunshier, Jack Lightfoot. **SECOND ROW:** Student Manager, Andy Kauls, Kenneth Anderson, Paul Rasmussen, Bill Morehead, Juris Kauls, Mike Casey, Don Morehead, Student Manager. **THIRD ROW:** Coach, Kerwin Engelhart, Jerry Kari, Artie Berglund, Robert Lee Jasinski, Gale Berggren, Zig Kauls.

Coach Engelhart and co-captains, Jerry Kari and Zig Kauls.

BASKETBALL



The Rangers with a nucleus of eight returning lettermen, under the leadership of Coach Kerwin Engelhart, played their way to an undefeated record in scheduled season games.

Emphasizing a strong defense and a fast offense, the Rangers subdued their opponents one by one.

Opening the conference season, the Rangers traveled to Rush City to play what turned out to be the most exciting game of the conference season. By holding the Tigers scoreless, in the final period the Rangers were able to rally from a fourteen point deficit at the end of the third quarter, and defeat the stubborn Tigers, 57—55.

The season was highlighted by balanced scoring with as many as four or five players hitting double figures in a single game.

According to Coach Engelhart, hard work with "guts and determination" helped to pave the way for 18 straight victories in regular season.



FLHS	74	St. Paul Park	58
FLHS	69	Fridley	35
FLHS	59	Elk River	49
FLHS	58	St. Paul Wilson . .	46
FLHS	57	Rush City	55
ELHS	80	Pine City	30
FLHS	56	Mahtomedi	23
FLHS	71	Mt. Iron	33
FLHS	72	Chisago City	50
FLHS	61	North Branch . . .	43
FLHS	86	Taylors Falls	53
FLHS	66	Lindstrom	59
FLHS	61	Rush City	48
FLHS	87	Pine City	51
FLHS	77	Chisago City	56
FLHS	59	North Branch . . .	52
FLHS	82	Taylors Falls	34
FLHS	77	Lindstrom	53

CONFERENCE CHAMPS

You've got to make this one!



Paul Rasmussen "raises that score" playing against Chisago City.





Left to Right: **FIRST ROW:** Dean Gardner, Charles Patrin, George Vedder, Richard Cohoes, Darrel Thurnbeck. **SECOND ROW:** Carl Jensen, Rudy Olson, Leo Houle, Leon Houle, Bill Cruse. **THIRD ROW:** Dennis Booren, Arlyn Tolzmann, Bernard Preiner, Gary Zak, Mylo Shoberg, Mr. John Schumacker, coach.

B-TEAM

Mr. Schumacher's basketball team immediately started developing its superior height and displayed it prominently when the junior cagers won their first three non-conference games and lost only to St. Paul Wilson.

But as the conference games began, the Rangers' inexperience started to show up and they were defeated by Rush City twice, and by North Branch and Lindstrom.

In the North Branch game the locals had a small lead, but lost it to give the Vikings 31 points to Forest Lake's 28.

The Lindstrom Bulldogs also came back in the last minute to defeat Forest Lake 27 to 25. The Ranger junior varsity had a record of 13 wins and 5 losses, 4 of which were conference games.

FLHS	28	St. Paul Park	23
FLHS	38	Fridley	20
FLHS	36	Elk River	21
FLHS	23	St. Paul Wilson . .	28
FLHS	31	Pine City	6
FLHS	23	Mahtomedi	20
FLHS	39	Chisago City	15
FLHS	29	Rush City	38
FLHS	45	North Branch	23
FLHS	74	Circle Pines	23
FLHS	34	Taylors Falls	30
FLHS	37	Lindstrom	26
FLHS	21	Rush City	23
FLHS	31	Pine City	28
FLHS	33	Chisago City	30
FLHS	28	North Branch	31
FLHS	38	Taylors Falls	29
FLHS	25	Lindstrom	27

CHEER- LEADERS



SENIOR CHEERLEADERS: Sue Pepin, Mary Kay Brisson, Gail Anderson, Marlys Marier, Valerie Dupre.



JUNIOR CHEERLEADERS: Sandra Waldo, Debbie Tyler, Sandra Marier, Peggy Lehmann.

"I'm a Ranger, Oh! Yes!" says Jody Preisler, Forest Lake's littlest cheerleader.





Among those portraying a scene from the annual Thespian Christmas production "A Child Is Born," are Judy Brine, Joyce Gulash, Clyde Rehbein, Kathy Sullivan, Nancy Petersen, Clyde Swenson, Steven Lindberg.

CHRISTMAS



Bringing out the effect Christmas has on the human race, this year's annual yuletide program was completely on the serious side with the Thespian production "A Child Is Born," and the band and choir lending a serious musical note with such selections as "Jesu, Joy of Man's Desiring" and "Overture to the Messiah."

The Thespian production, under the direction of student directors Karen Kreuger and Dianne Ward, told the story of the conflicts that took place in the inn where Mary and Joseph were refused lodging.

The cast of seven clad in vividly colored costumes designed and made by Thespian members portrayed their scenes on a stage on which was a replica of the old inn.



GRADE 11
ROOM 325

FIRST ROW: Left to Right: Carol Sands'trom, John Laurie, Karen Gamache, Mary Lou Carter, Kathy Weiss, Delores Cakebread, Barbara Strecker. **SECOND ROW:** Sharon Peterson, Barbara Allen, Raylne Becker, Paula Brust, Kathy Sullivan, Karen Reiter, Liliane Kauls, Janean Eskra. **THIRD ROW:** Karen Deskins, Gloria Grubbs, Judy Behrens, Sandra Olson, Marline Jensen, Mary Ann Loveless, Judy Mortensen. **FOURTH ROW:** David Stankeivicz, Donald Dow, David Larson, Jim Cournoyer, Charles Anderson, Leon Erickson, Paul Anderson, Janet Roberts. **FIFTH ROW:** Larry Waetjen, Bill Morehead, Ray Monson, Robert Shoberg, Jack Lightfoot, Dennis Leaser, Kenneth Anderson.

UNDERCLASSMEN

GRADE 11
HOME ROOM
SHOP



FIRST ROW: Left to Right: Judy LaBelle, Judy Gulasch, Mary Oberg, Sharon Behm, Marjorie Bailey, Betty Lou Waha, Marjorie Schmitt. **SECOND ROW:** Sherral Swanson, Sharon Rodgers, Michael Trepanier, Joy Ramsden, Henrietta Gregoire, Renee Wyman, Judy Alcock. **THIRD ROW:** Mary Lou Dupre, Janice Grundhofer, Roberta Anderson, Sharon Bloom, Patricia Anderson, Karen Strandberg, Dorothy Johnson. **FOURTH ROW:** Michael L'Allier, Stanley Erzar, Alfred Miron, Marlyn Proulx, Diane Warner, Nicole Ott. **FIFTH ROW:** David Franzen, Michael Schroeder, Thomas Corbett, Thomas Herder, Robert Bodine, Juris Kauls, Allen Klinefelter, Thomas Mills.

GRADE 11
ROOM 321



FIRST ROW: Left to Right: James Houle, Jerry Gerlich, John Houle, Lloyd Bergstrom, Warren Kunshier, Richard Kunshier. **SECOND ROW:** Daniel LaCoursiere, Leon Muellner, Henry Gregoire, James Istvanovich, Tony Dubois. **THIRD ROW:** Dean Larson, Franklen Nordin, Robert Shogren, Robert Lindgren, Dean Steelman, James Dupre. **FOURTH ROW:** Kenneth LeVesseur, Lawrence Robinson, LeRoy Robinson, Duane Boyer, Clifford Berggren.



GRADE 10
ROOM 221

FIRST ROW: Left to Right: Carol Carter, Barbara O'Hara, Karen Schmidt, Joan Frandle, Patricia Colburn, Myrna Bowman. **SECOND ROW:** Sharon Proulx, Sharon Winch, Verna Beeksma, Judith Mulvihill, Larry Retherford, Andrew Hauer, Sue Drummond. **THIRD ROW:** Marvin Sandgren, Earl Halley, Gregory Goodine, Eugene Waldoch, Sandra Shosten, Carol Johnson. **FOURTH ROW:** Carl Jensen, Wayne Gilbertson, Ronald Hvinden, Gloria Ebel, Darrell Thurnbeck, Lorry Hansen. **FIFTH ROW:** Ralph Buske, Raymond Allison, Gary Zak, Thomas Larson, Cecelia Locke, Joseph Bezek.



GRADE 10
ROOM 223

FIRST ROW: Left to Right: Jenelle Strecker, Alan Reese, Gayle Emerson, Jerry Garrison, Arthur Kost. **SECOND ROW:** Shirley Phillips, Virginia Sternberg, Darril Boyer, Darlene Jillert, Pamela Cardinal, Kathleen Willette. **THIRD ROW:** Richard Cohoes, Joan Johnson, Carol Bechtold, Sandra Hoff, Kenneth Hansen. **FOURTH ROW:** Joseph Cartier, Eugene Riopel, Douglas Latew, John Fehrman. **FIFTH ROW:** Dennis Booren, Rudy Olson, Ronald Schatz, Virgil Springer, Leo Houle.

GRADE 10
ROOM 225



FIRST ROW: Left to Right: Lawrence Carlson, Penny Reich, Sandra Rioux, Mickey Simmons, Cynthia Franzen. SECOND ROW: Joanne Odermatt, Joyce Webb, Vivian Anderson, Barbara Broadbent, Darlene Johnson. THIRD ROW: Diane Lindell, Judy Mattson, Glenna Tompkins, Charlene Dubois, Kermit Sandstrom. FOURTH ROW: Edward Timm, Janet Collen, Virginia McKeen, Francis Faymoville, Albert Chaussee. FIFTH ROW: Bernard Knauff, Mylo Shoberg, William Haluptzok, Thomas Bowens, Douglas Streitz.

GRADE 9
ROOM 213



FIRST ROW: Left to Right: Richard Olsen, Carol Makkyla, Rae Ann Sivigny, James Onsager, Marianne Hermes, Julie Moxness, LaVonne Broadbent. SECOND ROW: Donna Carlson, Orval Matheson, Evelyn Johnson, Karen Hansen, Sharon Gunderson, Richard Robinson. THIRD ROW: Julie Wightman, Susan Anderson, Audrey Nortin, Robert Konobeck, Judy Schlavin, Clara Bergeron, David Montain. FOURTH ROW: Vicki Larson, Dorothy Jensen, Howard Phillips, Eileen Fuglie, Julie Proulx, Charles Patrin. FIFTH ROW: James Degendorfer, Conrad Swanson, Sharon Knutson, Paul Johnson, Carol Abbott, Patricia Bakke, Linda Voss.



GRADE 9
ROOM 217

FIRST ROW: Left to Right: Gary Hauble, Constance Adams, Susan Becker, Faith Radtke, Yvonne Gustafson, Debbie Tyler, Peggy Lehmann. **SECOND ROW:** Marilyn Anderson, Orvin Swenson, Mary Mills, Jacquelin Gamelin, James Nelson, Glen Johnson, Gary Houle. **THIRD ROW:** Robert Johnson, Darlene Johnson, Judy Istvanovich, Steven Johnson, Stanley Ciesielski, Donald Moorhouse, Kenneth Solomon, Audrey Edgstrom. **FOURTH ROW:** Paula Berntson, Marilee Smith, Marlys Peterson, Janet Palmer, Carole Christensen, David Sandstrom, Martin Whitney. **FIFTH ROW:** Richard Norton, Kenneth Kotlarz, Andrea Cardinal, Melanie Olson, Wendee Forsberg, Michael Weiss, Edward Mallon.



GRADE 9
ROOM 311

FIRST ROW: Left to Right: Gary Pitschka, Robert Olson, Lawrence Houle, Muriel Garrison, Mary Johnson, Pamela Boese, Pamela Palmer. **SECOND ROW:** Kathleen O'Brien, Marian Schroeder, Lavonne Wiezycki, Janet Baker, Marilyn Sterling, Karen Cardinal. **THIRD ROW:** Diane Hehner, Howard Nielsen, Carl Jovanovich, Michael Husemann, Richard Mortensen, Mary Vogel, Elaine Lamphier. **FOURTH ROW:** Shirley Haluptzok, Dennis Johnson, Gale Tappe, John Peter, Dawn Jehlen, Kenneth MacLean, Joseph Schlaeger. **FIFTH ROW:** Stanley Mitthun, Louis Konobeck, William Ames, James Erickson, John Frazer, June Behrens, Victoria Danks.



GRADE 9
HOME ROOM
AG.

FIRST ROW: Left to Right: Thomas Willette, Richard Hauer, Lester Rydeen, Garold Swanson. **SECOND ROW:** Gary Walberg, Gerald Wright, Thomas LaMare, Michael Dubois, George Miron. **THIRD ROW:** Thomas Dahlberg, Dennis Waha, William Larson, Donald Koch. **FOURTH ROW:** Roland Stricklin, William O'Hara, Leland Swenson, Richard Dupont, Ronald Husnik. **FIFTH ROW:** Garen Engquist, Steven Kari, Donald Lutz, Calvin Bowens.



GRADE 8
ROOM 106

FIRST ROW: Left to Right: Diane Autey, Carol Halley, Robert Hillsdale, Barry Farver, Reid DuLac. **SECOND ROW:** Candace Proulx, Peter Matlon, Richard Johnston, John Kock, David Bezek, Susan Neske. **THIRD ROW:** Virginia Steltzner, Sandra Marier, Loren Nickelson, James Preiner, Kenneth Mack. **FOURTH ROW:** Patricia Christensen, James Taylor, Thomas Cardinal, Michael Schatz, James Yale, Diane Brnum. **FIFTH ROW:** Harvey Strecher, Kathleen Kluender, Julie Werner, JoAnn Birr, Elaine Erickson.



GRADE 8
ROOM 109

FIRST ROW: Left to Right: Dale Kunshier, Roberta Stuard, Mary Banta, Michael Ott, Joan Bond. **SECOND ROW:** Mary Ann Haselbauer, Alan Maranville, John Miron, Ronald Carlson, Dianne Winch, Andris Kauls. **THIRD ROW:** Dean Thompson, Susan Renard, Diane Ramsey, Carol Larson, Robert Dupre. **FOURTH ROW:** Duane Gustafson, Suzanne Gabrick, Nancy Nordlund, Judy Campbell, Judy Martz. **FIFTH ROW:** Arne Geslin, Robert Swanson, Wayne Houle, Ronald Bowens, Raymond Quigley.

GRADE 8
ROOM 114



FIRST ROW, Left to Right: Shirley Kost, Eugene Anderson, Dennis Tappe, Nancy Preisler, Dorothy Boyer. SECOND ROW: Anthony Kotlarz, Richard Lunde, John Holand, Deirdre Lellman, Arnold Pirsig, Dennis Strandberg. THIRD ROW: Daniel Witham, Don Johnson, David Degendorfer, Raymond Nelson, Karen Berntson. FOURTH ROW: Sandra Waldo, Paulette Shelander, Cheryl Moody, James Robinson, Anne Jenuwine. FIFTH ROW: Steven Miller, Mary Case, Rodney Erickson, Joan Haar, Grace Anderson.

GRADE 8
ROOM 206



FIRST ROW: Left to Right: Peter Edstrom, John Cournoyer, Nancy Dickey, Mary Osterbauer, Carolyn Bowman, Katherine Smith. SECOND ROW: Winston Peterson, Gary Miller, Gary Reed, Mary Montain, Barbara Rodgers. THIRD ROW: Douglas Anderson, James Rehbein, John Morris, Alice Anderson, Violet Carter, Judy Granholm. FOURTH ROW: Gerry Wahlquist, Carol Zak, Dennis Waetien, Charles Hammer, Michael Taflinger. FIFTH ROW: James Jacobs, Kenneth Broadbent, Kathleen Laurie, Duane Knutson, John Simmons, Donald Lindgren.

GRADE 8
ROOM 207



FIRST ROW: Left to Right: Richard Cartier, Mary Heisler, Vernon Thompson, Roger Lindell, Joan Carlson. SECOND ROW: Mary Maslowski, Gloria Robinson, Glen Miles, Deanna Booren, Sharon Yost, Ronald Ramsden. THIRD ROW: Harvey Lee Matheson, Barbara Glenn, Marlynn Bartusch, Phyllis Amundson, Vincent Monson. FOURTH ROW: Ralph Hyde, Norma Danks, Donald Anderson, Peter Kauls, Edward Schroeder, Leslie Grubbs. FIFTH ROW: Sharon Larson, Carol Oelke, Esther Vanderpas, James Broadbent, Ernest Switzer.



GRADE 7
ROOM 208

FIRST ROW: Left to Right: James Frischmon, James Johnson, Robert Tappe, Terrence Muellner, David Fakler.
SECOND ROW: Raymond Broadbent, Donna Storkan, Phillip Houle, Darlene Fraley, Carolyn Hawkinson, Kay Johnson.
THIRD ROW: John Preiner, Randal Schneider, Craig Moen, Mary Lou Ellefson, James Lindberg.
FOURTH ROW: Irvin Harper, Cathleene Lawler, Janet Thorp, Regina Phillips, Mary Brust, Janice Haluptzok.
FIFTH ROW: Julianne Maher, Mary Mortensen, Helen Knutson, Ronald Wells, Richard Cruse.



GRADE 7
ROOM 306

FIRST ROW: Left to Right: John Johnson, James Weseman, Jane Makkyla, Cheryl Jonason, Donna Mueller.
SECOND ROW: Frank Monette, Harold Thomas, Thomas Moen, Timothy Moen, Jerry Profant, Karen Elmstrom.
THIRD ROW: Gary Lindell, Richard Gabrick, Robert Anderson, Sandra Hewson, Dona Alfverby.
FOURTH ROW: James Fehrman, Charles Dale, Pamela Gamelin, Colleene Lawler, Deloris Carlson, Bruce Houle.
FIFTH ROW: Audrey Timm, Dale Kolbow, Joan Petzka, John Nelson, Alden Seidelmann.



GRADE 7
ROOM 307

FIRST ROW: Left to Right: William Tentor, Karen Nielsen, Beverly Kunshier, Loren Johnson, Charlotte Delong.
SECOND ROW: Cheryl Rehbein, Richard Lundgren, Mildred Jensen, Catherine Trulan, Patricia Lichtscheidl, Bonita Swanson.
THIRD ROW: Donald Stanek, Andrew Istvanovich, Gary Gronewald, Robert Thurnbeck, James Carr.
FOURTH ROW: Dale Jovanovich, Bruce Ramsden, Gregory Linnell, Steven Anderson, Alan Oberg, Steven Dufresne.
FIFTH ROW: Charles Leen, Douglas Holcomb, Kathleen Erickson, Barbara Anderson, Alana Gilbertson.

GRADE 7
ROOM 308



FIRST ROW: Left to Right: Leland Sterling, Kathryn Sedlacek, Hilda Miller, Nicholas Waldoch, John Lund, Glenn Tornell. SECOND ROW: Jeffrey Houle, Douglas Janke, Virginia Lund, Emmy Lou Gillert, Donald Morehead. THIRD ROW: Myron Fladland, Laura Olson, Jerold Patrin, Wesley Chmielewski, Helen Kammerer, Constance Evans. FOURTH ROW: Terrie Dubois, Deanne Lang, Charles Dupont, William Hammer, Gary Partlow. FIFTH ROW: Nancy Jensen, Wilfred Riopel, Robert Berggren, Barbara Taurman, Christine Arth, Arlys Vanderpas.

GRADE 7
ROOM 309

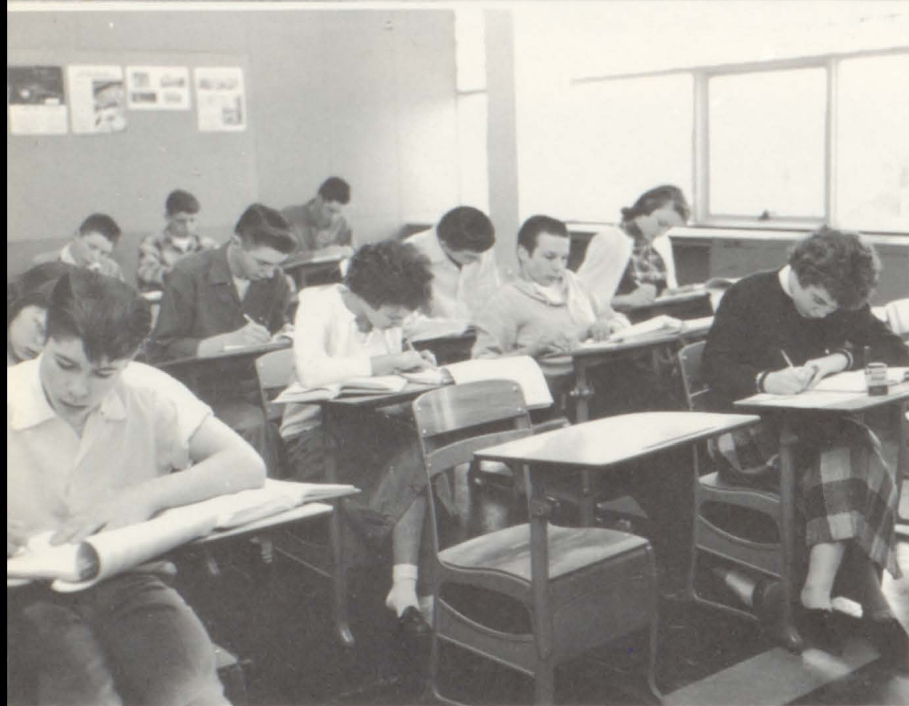
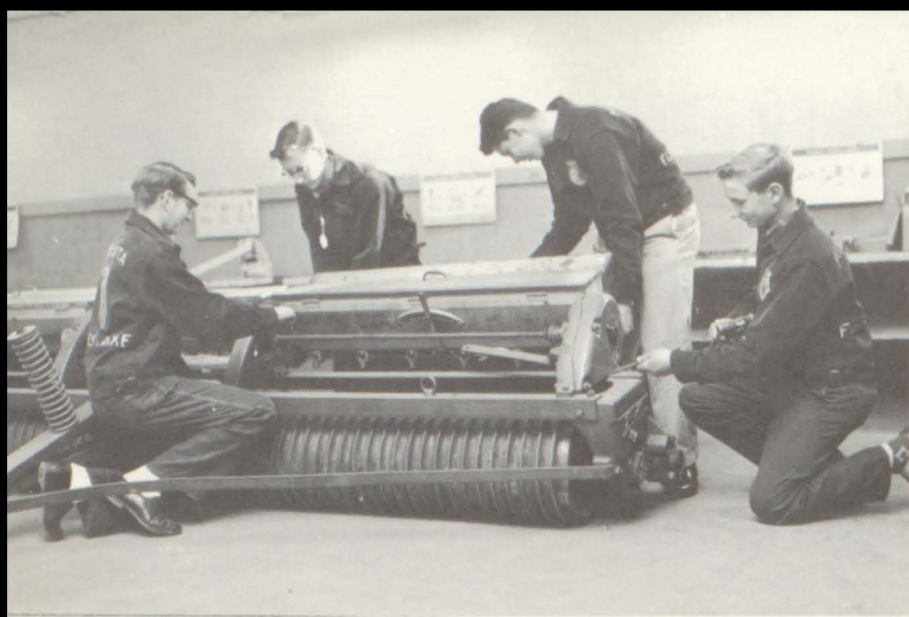


FIRST ROW: Left to Right: Clifford Frandle, Michael Waltz, Linda Owens, Allan Stringer, Michael Morris. SECOND ROW: Daniel Lundgren, Dennis Hansen, Lynne Lundquist, Mary Willette, Michael Houle. THIRD ROW: Marjorie Selleck, Gary Dupre, Richard Sandstrom, Christine Berger, Jeffrey Jensen. FOURTH ROW: Bonnie Kendrick, Donald Perreault, Ronald Colburn, Susan Taylor, Mary Fike. FIFTH ROW: Juanita Duraine, Julie Jenuwine, Bernice Hartzi, Jennifer Langdon, Arthur Boese.

GRADE 7
ROOM 209



FIRST ROW: Left to Right: Paul Houle, Marie Tennis, Carlyle Bowman, Thomas Schlavin, Galyn Swanson. SECOND ROW: Barton Johnson, Randy Frazier, Charlotte Pepin, Donna Bond, Linda Kleinendorst, Victoria Stanley. THIRD ROW: Thomas Ersfeld, Naomi Moody, Laurel Cakebread, Thomas Wegleitner, William Marette. FOURTH ROW: Marsha Yost, Thomas Crohn, Lynda Fingal, Deloris Larson, Duane Hapka. FIFTH ROW: Kathleen Haver, James Morrison, Kathleen Ekblad, Rita Lutz, Richard Pommier.



-SPRING-



Spring's semester has seniors counting the days 'til graduation with mixed emotions. The first National Honor Society is formed; baseball and track uniforms are again taken out of storage; and spring fever is overcome by banquet plans.

The sands of time that made up the school year slowly slip by one by one, and at the end, surprisingly, seem to have passed all too quickly . . . A chapter in the life of each graduate is officially drawn to a close.



RANGERS COP BASEBALL TITLE

Forest Lake's Rangers ended a very successful season as conference champions, with a record of 10 wins 2 losses. The Rangers dropped their second game to Mahtomedi 0-3. But from that time on the record showed continuous improvement on the Rangers' part. In their third game the Rangers defeated one of the top teams of the Iron Range, Virginia, in a thriller of 2-1.

Near the end of the season the Rangers trimmed North Branch in a big showdown game 15-10, giving us the title.

In the semifinals of the District, Forest Lake defeated Sandstone 11-0. In the second game of the day, the Rangers lost the championship to Hinckley 3-6.

Looking forward to another good season this year, the Rangers will have six returning boys.

1958 SEASON RECORD

FL.... 6	West St. Paul	5
FL.... 0	Mahtomedi	3
FL.... 2	Virginia	1
FL.... 19	Taylor's Falls	0
FL.... 7	St. Cloud Cathedral	6
FL.... 11	Rush City	2
FL.... 13	Chisago	1
FL.... 6	Lindstrom	0
FL.... 6	Pine City	4
FL.... 15	North Branch	10

DISTRICT TOURNEY

FL.... 11	Sandstone	0
FL.... 3	Hinckley	6



FIRST ROW: Left to Right: David Stankeivicz, Donald Banta, Joe Heim, Hugh Hehner, Jerry Haselbauer, Juris Kauls and Richard Kunshier. **SECOND ROW:** David Klinfelter, Bob Cronk, Paul Rasmussen, Jim Istvanovich, Bob Morehouse, Tony Dubois.

STANDING: Coach Kerwin Engelhart, Artie Berglund, Gale Berggren, Zig Kauls, Hermann Kauls, Bert Evgen and Coach Kenneth Hanson.



FIRST ROW: Left to Right: Jerry Solem, Bert Evgen, Jim Heisler, Greg Pepin, Denny Mack, Terry Heim, Jim Trudeau, Bill Morehead. **SECOND ROW:** Coach LeRoy Stang, Dave Larson, Gene Sternberg, Mike Trepanier, Warren Kunshier, Leon Erickson, Ken

Anderson, and Dave Ekblad. **THIRD ROW:** Walter Marier, Cliff Berggren, Gordy Schmuch, Don Mortenson, Dean Larson, Leon Schmidt, Jerry Gardner.



TRACK

Forest Lake High School's track team took second place in the 1958 District 25 track meet held at North Branch, with a score of 42½ points. North Branch placed first with 48½ points.

With this placing, five of the Ranger thinclads qualified to go to the Region 7 track meet held at Hibbing. They were Gale Berggren, Bob Cronk, Jerry Kari, Hermann Kauls, and Zig Kauls.

Coached by Kerwin Engelhart and Ken Hanson, three of the team placed fourth in the Region. Gale Berggren, high hurdles, Jerry Kari, mile run and Hermann Kauls, 880 yard run.



CLASS OF 1959



TOP SCHOLARSHIP LEADERS



Pictured above are the top students scholastically ranked, of the class of '59. 14 of the 17 scholars who are in the upper 15 percent are, left to right: Betty Lou Crete, Darlene Simmons, Kay Fuglie, Karen Kreuger, Dawna Shosten, Joyce Stringer, Joanne Stanek. **SECOND ROW:** Jerry Gardner, Richard Rudin, Zig Kauls, Alice Sandberg, Don Ekblad, David McGovern, Don Palmer. Those not shown, Pat Schatz, Eddy Bakeberg, Jerry Kari.

Valedictorian
Richard Rudin
Salutatorian
Kay Fuglie



Congratulations Class of
1959

THE RECORD SHOP

Donald L. Johnson

Russell M. Rose, Manager



Good Luck, Grads!

**MARIER
IMPLEMENT**

CASE

Sales and Service

Farm and Utility Machinery

Wright Saws

Congratulations

GRADS OF '59

From

WINK'S

LIQUORS

Dr. Knock tells patient the evils of "deadly germs!"



The Junior Class
Forest Lake High School

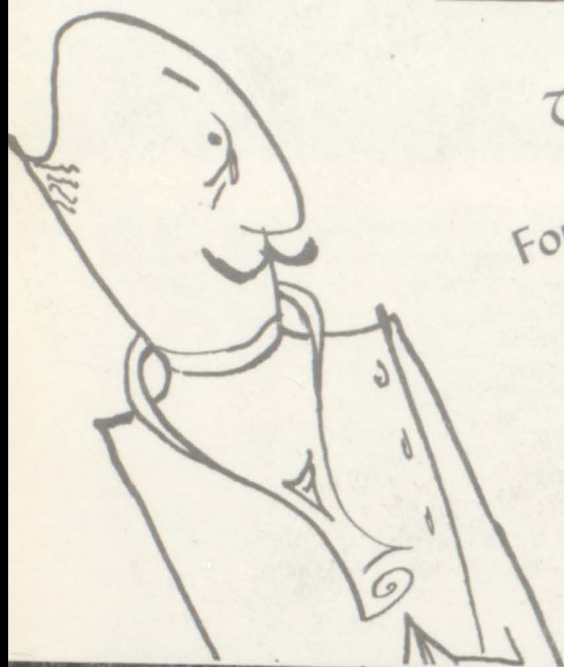
presents

Doctor Knock

by Jules Romain

April 24 and 25

High School Auditorium



Farmer's wife, JoAnne Worth, explains to the Doctor all of her ailments.

Congratulations
From

**GRIFF'S
MOBIL STATION**

TE 5-3595



Congratulations
To the 1959 Graduates

**DOUG'S
STANDARD
SERVICE**

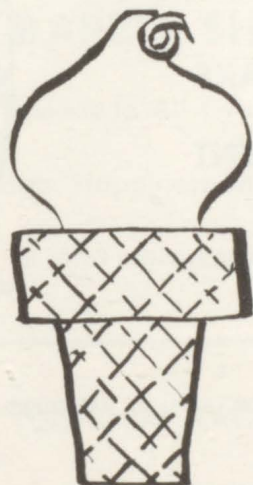


**BOB JOHNSON
SPORTING GOODS**

Forest Lake

Success to the Grads!

Congratulations
Seniors



DAIRY

QUEEN

Congratulations
Grads of '59

KENCO

TE 5-3983

Forest Lake

Congratulations

Seniors

From Tom and Vivian Osterbauer

ADVERTISEMENTS

DEPENDABILITY

Best Wishes for

Future Happiness and Success

**INTER-STATE
LUMBER COMPANY**

Compliments of

**CARTER'S JEWELRY
AND
RECORD SHOP**

**HOVEY
EQUIPMENT CO.**

- INTERNATIONAL TRUCKS
- FARMALL TRACTORS
- JAMESWAY IMPLEMENTS



Phone TE 5-2180

Best Policy

AT ALL
TIMES



Compliments
of

**H. A.
ANDERSON**

Congratulations, Grads!

INSURANCE — REAL ESTATE

INCOME TAX SERVICE

BETTER VALUES

**FOREST LAKE
DEPARTMENT
STORE**



COMMERCIAL SIGN PAINTING

**S TELTZNER
IGN
SERVICE**

PHONE TE 5-3725

FOREST LAKE, MINN.



Congratulations

to the
graduating class



**BEN FRANKLIN
STORE**



**GRIEMAN'S
BARBER SHOP**

Extends to All Graduates

Health, Happiness and Success

in All Future Endeavors

Good Wishes to the

Class of '59

DR. O. R. VAN WIRT

CONGRATULATIONS

From Your

**FOREST LAKE
S & Q HARDWARE STORE**

Lloyd E. Bergstrom



Your



DEPENDABLE

DRUGGIST

RICHARD F. PETERSEN

Sales and Service



Aluma Craft

and

Wilson Glass Boats

JACK'S SPORT SHOP

Live Bait

Mercury

Outboard

Motors



to
BETTER BUYS

at

**ENGQUIST
HARDWARE!**



**FOREST LAKE
PROVISION**

Best Wishes From



**BENSON
AND
PETERSON**



Oldsmobile

John Deere Implements

Congratulations Grads

From

BOB'S ROYAL SERVICE

at Hwys 61 & 8

Forest Lake, Minnesota

Temple 5-9993

Congratulations!

and

Remember

HARRIET'S TOTS TO TEENS

Congratulations

Class of

1959

HAROLD'S SHOES

Forest Lake

HAROLD AND ANN MOEN

BUY LOCALLY

Congratulations

Class of

'59

**COTTAGE BARBER
AND
BEAUTY SHOP**

TE 5-2440

Mr. & Mrs. Gus Schatz



Best

Wishes

in the

Future

SKOGMO'S STORE



24 Hour Service

**WAGNERS
HAMBURGER
SHOP**

H. C. TAURMAN, Proprietor

Congratulations!

EARLING'S APPAREL

FOREST LAKE, MINN.

Congratulations

from

THE HOULE GROCERY

GOOD LUCK, GRADS

From

**ARNIE'S
SHELL SERVICE**



GOOD LUCK, GRADS!

From

**HORNING'S
FEED & PRODUCE**

South of Forest Lake

on Hwy. 61

COURTESY SERVICE

Good Luck Grads

From

COAST TO COAST STORE

Red Donovan, Manager

FOREST LAKE

BARBER SHOP

Bob and Joe

Congratulations!

Class of

'59

**FOREST LAKE
LOCKER PLANT**

Congratulations

And

Remember

FOREST MANOR MOTEL

Congratulations

From

**FOREST LAKE
CHIROPRACTIC CLINIC**

Congratulations

H. K. DUPONT

Best Wishes

DR. G. T. MIDBOE



**RED OWL
AGENCY**

Phone TE 5-2171

CLARENCE DICK, Owner

COURTESY SERVICE



RUDY'S SUPER MARKET

DAVID ALLEN, Manager

Congratulations

From

COOK'S PAINTS

1067 South Lake Street

FRANK J. LEUTHNER, Owner

Congratulations!

From

SETTERHOLM'S SUPER FAIR

Forest Lake

Congratulations, Grads!

WOLTER'S AUTO SUPPLY

Homes, Farms, Lakeshore

and Business Property

HERMES & HILTON REALTORS

FOREST LAKE, MINNESOTA

"There's No Place Like Home

When it's Yours"

Phone TE 5-2482

Home Phone TE 5-3867

BEST WISHES TO GRADS

From

DR. C. D. LARSON



FOREST LAKE LANES

Finest Bowling Conditions

COMMERCIAL HOTEL

"Where All Sportsmen Meet"

H. A. PEPIN AND SONS

Congratulations, Graduates!

J. B. WEISSER

LUMBER CO.

TE 5-3511



Compliments of

ED MALLON

FORD SALES

Best Wishes From

HENNEN

CHEVROLET COMPANY

• No Finer Service!

• No Better Deal

Anywhere!

AUTHORIZED CHEVROLET DEALER



RAY JEANS

Farm Machinery Headquarters

MINNEAPOLIS-MOLINE — FORD



Best Wishes

VALENTY'S

NAME BRANDS

BEST BUYS



**E. J. HOULE
COMPANY**

FOREST LAKE
MINN.

Best Wishes, Grads

From

**FOREST LAKE
TIMES**

Meet Your Friends at

**The
REX CAFE**



Chow Mein

to take

out

TE 5-9995



**"HANDY
CANDY"**

Congratulations!

from

A & W

Compliments of Jewel and

Louise Lould

Compliments of

JIM CORBETT VARIETY

Necchi-Elna

Sewing Machines

Complete Sewing

Center

SALES AND SERVICE

TE 5-3525

Forest Lake

Te 5-2408

St. Paul

Pr 2137

A. W. BERGGREN

Electrical Contracting

Member N.E.C.A.

Forest Lake, Minnesota

If It's Good Food

You Want —

Visit

VOGEL'S INN

Congratulations

From

REUB'S TIRE SHOP

Tire Headquarters

Te 5-2245

Best Wishes

To Grads

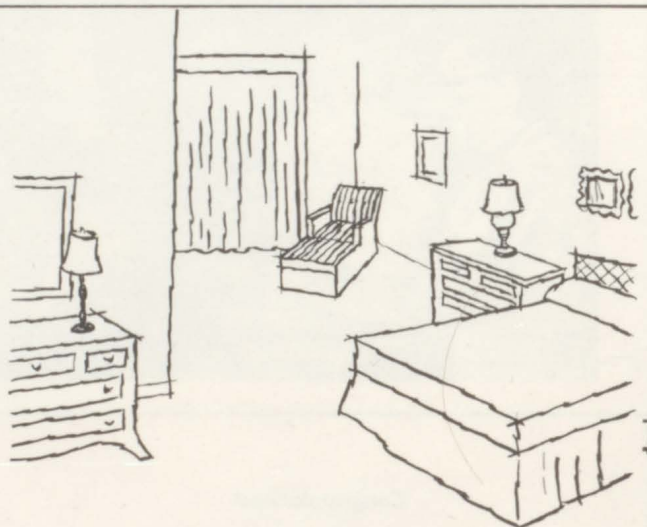
DR. J. M. LYONE

SHOP WHERE YOU CAN SAVE

GOOD LUCK

FROM

DR. G. M. RUGGLES



Best Wishes

For

Future Happiness and

Success

RUSTIC INN

Stacy, Minnesota

Congratulations Grads

For the Best Furniture Buys

its

**FOREST LAKE FURNITURE
MART.**

BEST WISHES, GRADS!
 Hope You Will Remember
 Many Hours of Fun
 at the Rink!



SKATELAND

Best Wishes to

Class of 1959

THE KUNO STORE

BIG MARINE LAKE



**COUNTRY
 HOME BAKERY**

Forest Lake, Minn.

YOU CAN RELY ON THEIR DEPENDABILITY

Best Wishes
 for a Successful Future,
 Forest Lake Grads

**C. M. HALLBERG
 &
 FAMILY**



TO SUIT
 YOUR
 TASTE

Compliments of

COUNTRY KITCHEN

WYOMING, MINN.

Congratulations
And Remember

**FOREST LAKE
GREENHOUSE**

For That Senior Prom Corsage

Best Wishes

**LABELLE
TEXACO**



Congratulations From

GRAVES LAWNMOWER

Sales and Service

Best Wishes

Graduates of '59

OUR OWN HARDWARE

Good
Luck
Class
of
'59



COTTAGE CLEANERS

Forest Lake

TE 5-2123

