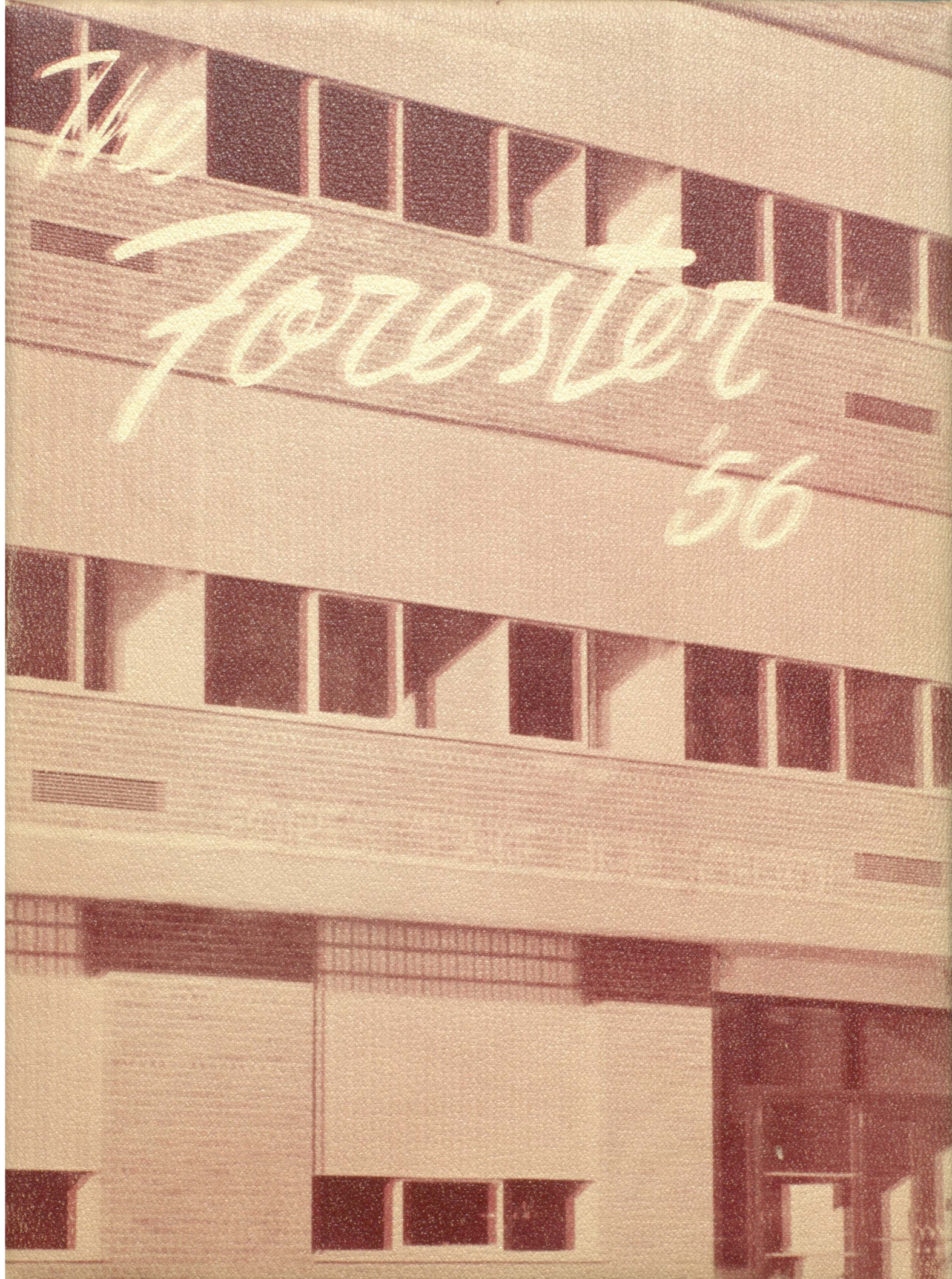
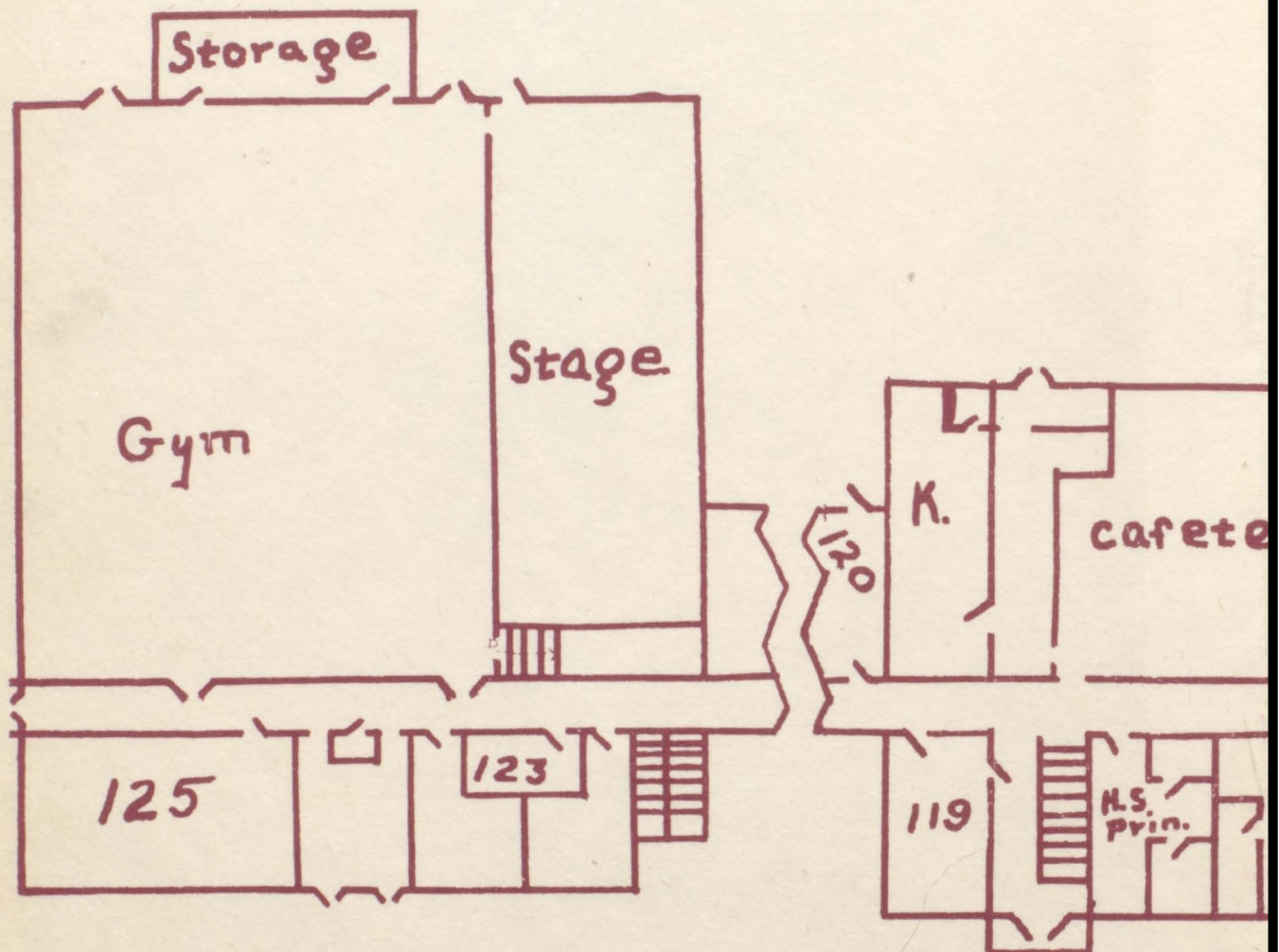


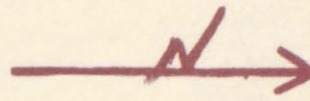
*The Forester*  
56





# HIGH SCHOOL 1st Floor





Music  
Studio

SHOP

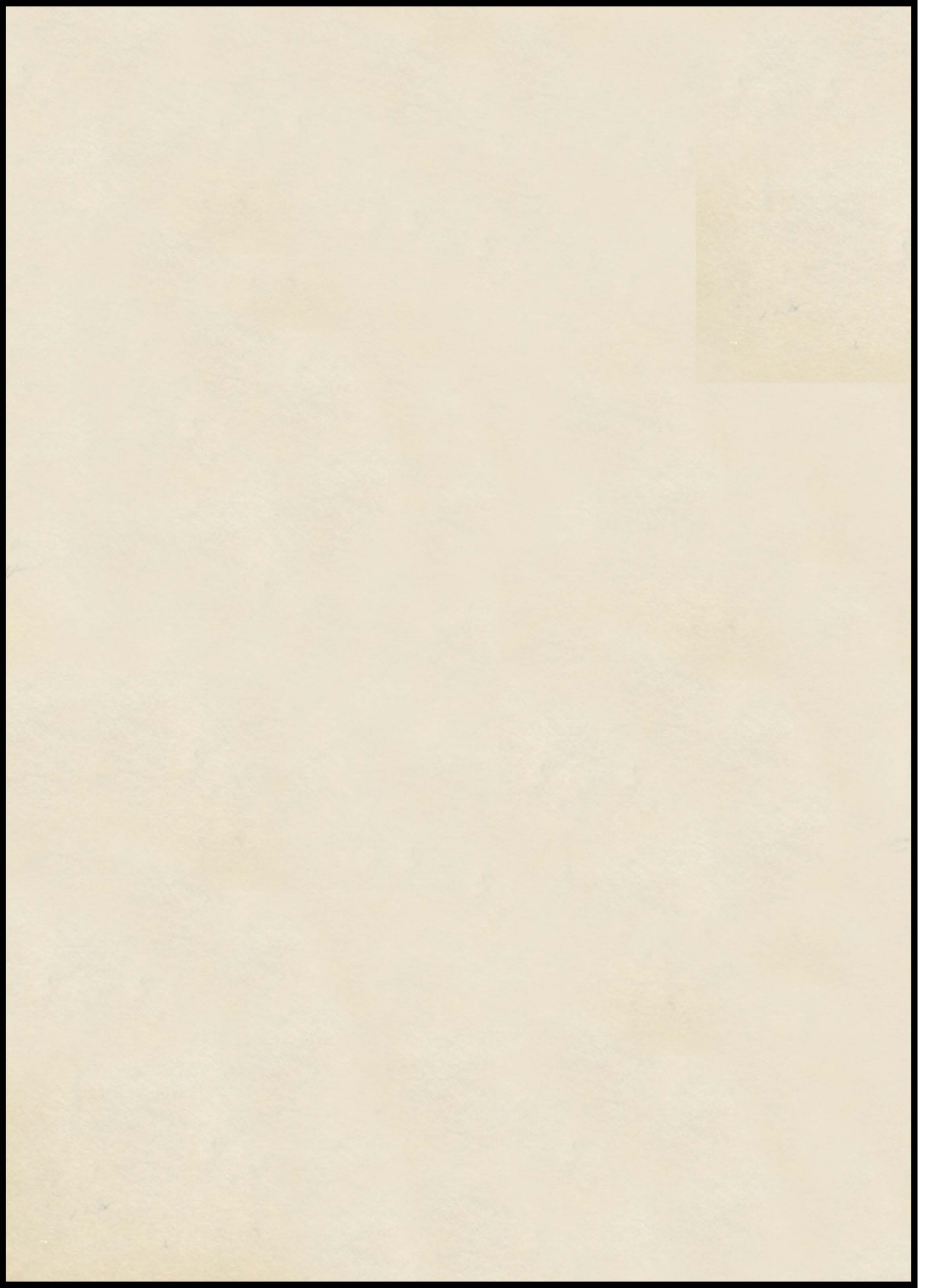
M.S.B.

101  
102  
103  
104

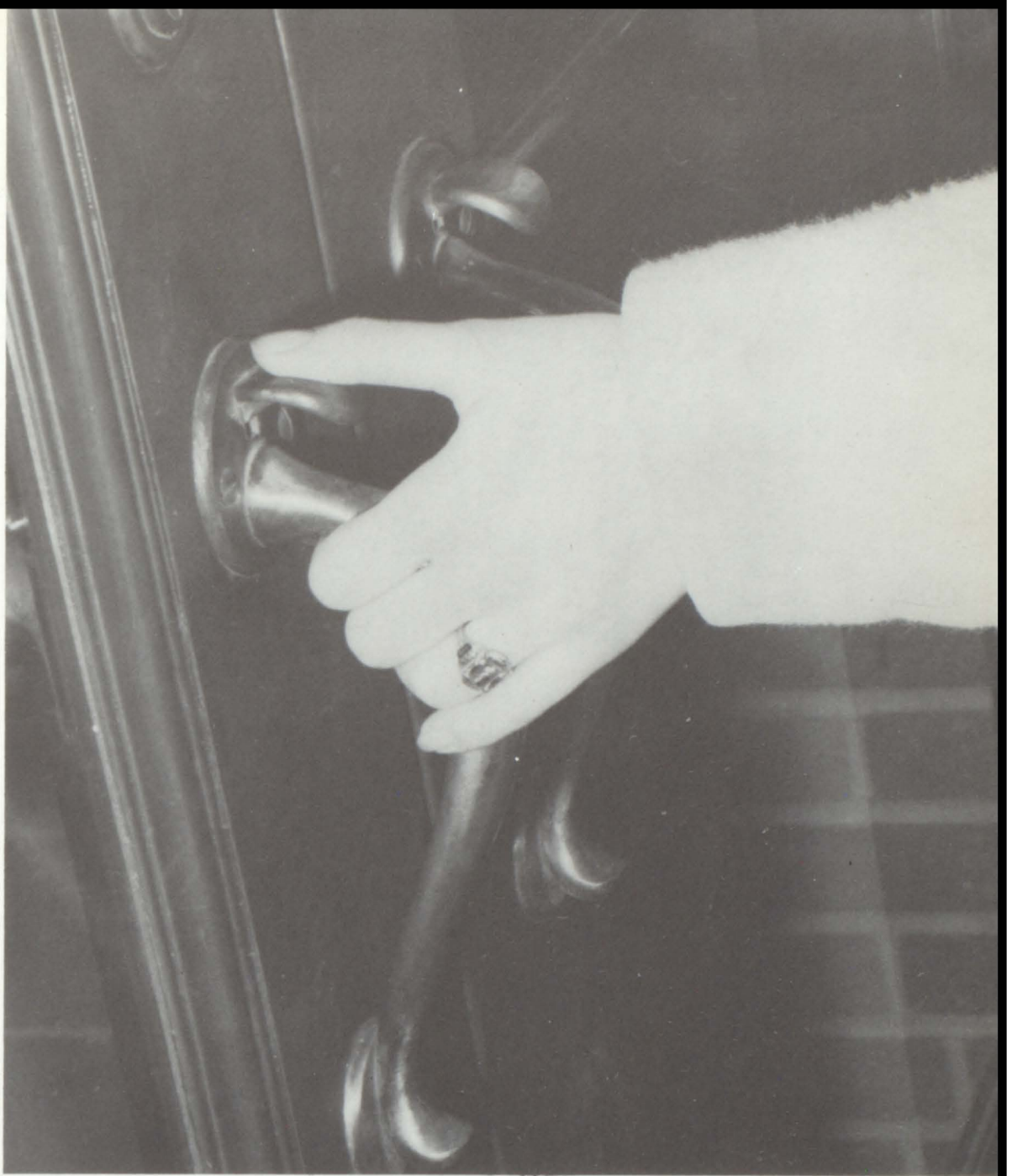
114  
112  
108  
106  
116  
110

Sec. Supt. 113 111 109 107 105  
Front









**THE**

**FORESTER**

**1956**



<b>TABLE OF CONTENTS</b>	
<b>ADMINISTRATION, FACULTY</b>	<b>PAGE 5</b>
<b>GRADUATES</b>	<b>PAGE 15</b>
<b>SPORTS</b>	<b>PAGE 27</b>
<b>ACTIVITIES</b>	<b>PAGE 41</b>
<b>UNDERCLASSMEN</b>	<b>PAGE 69</b>
<b>ADVERTISING</b>	<b>PAGE 77</b>

## **STAFF**

Lois Sovereign, Gloria Wenzel—Co-Editors  
 Duane Zwolensky—Sports Editor  
 Joan Gamelin—Senior Section  
 Marge Harstad and  
 Beverly Sahlin—Subscription Sales  
 Lois Balfanz—Activities  
 Maureen Morley—Business Manager  
 Jerry Jovan—Artwork  
 Kittee Berfelz and  
 Rosemary O'Gara—Proofreading  
 Paul B. Rafferty—Faculty Advisor





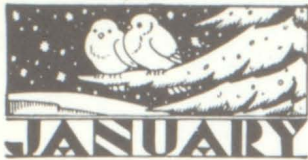
## DEDICATION

We the class of '56 . . . for his patient and never-ending efforts as director of our band . . . always performing; sometimes getting thanks, sometimes not . . . for the anecdotes and stories that added that "extra something" to history class . . . for molding fine musicians when it sometimes seems hopeless . . . for knowing just what kind of music the students like to hear . . . sincerely dedicate this Forester to Mr. Rollin Nelson.



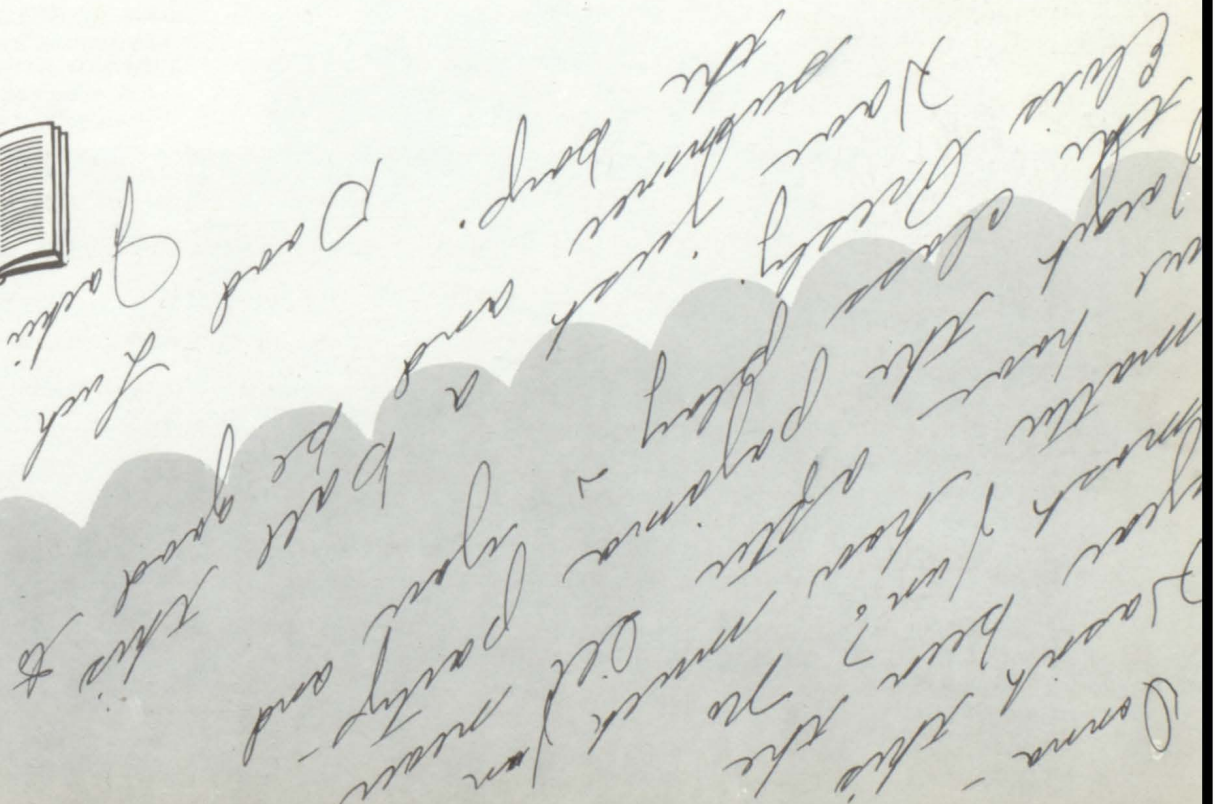


# Summary of '55-56



Opening day of school finds students excited . . . an important milestone in world peace is reached at the Geneva Conference . . . grade school children receive Salk polio shots . . . Forest Lake folks begin campaign for hospital . . . eventful Homecoming day including parade, pepfest and game is climaxed by dramatic coronation . . . theaters draw crowds as "Gone With The Wind" is released for second time . . . exchange student Reiko Yamanari arrives from Japan . . . President Eisenhower suffers severe heart attack . . . band marches at Halloween Capital . . . Mayor Van Wirt assumes office . . . absence list lengthens as deer hunting begins . . . seniors present "Curious Savage" . . . students jump for joy when first vacation arrives with Thanksgiving . . . Alumni get first taste of defeat in record number of years from F.L.H.S. cagers . . . Oscar winner Grace Kelly announces engagement to Monaco's Prince Rainier . . . Queen Mardi reigns at Dualeers' Autorama show . . . worst floods in history devastate California and New England . . . world famous scientist—Einstein dies . . . Forest Lake's biggest social event, the Coronation Ball, carries out Parisian theme . . . Forest Lake plays host to Carnival skiers and Winter Carnival Royalty . . . school lunch price rises to 25 cents in accordance with cost of living . . . actor James Dean dies in auto crash at height of his career . . . groundhog sees shadow and promises more blustery weather . . . F.L.H.S. students flaunt their skills in annual spelling and handwriting contests . . . sweethearts gather at Valentine's dance to observe crowning of King and Queen of Hearts . . . Rangers win basketball district title . . . world trouble brews as Cold War continues . . . Dr. Mensheha, Ted Kauls family become United States citizens . . . Ike announces he will run for second term . . . F.F.A. celebrates 20th anniversary . . . choir dons black faces and flashy costumes for the "Minstrel Parade" . . . students pay tribute to St. Patrick with "the wearing of the green" . . . "Y" load SIXTEEN TONS and what d'ya get" . . . a hit that sets the country rocking . . . April is here and spring is in the air . . . juniors present "Ramshackle Inn" . . . couples float to dreamy music at the spring formal . . . next year's Breeze and Forester editors are announced at annual Journalism Banquet . . . cramming and headaches accompany final exams . . . deserving students step up to receive honors at Awards Day program . . . commencement finds seniors bidding a sad farewell to F.L.H.S. while looking to the future.









SUPERINTENDENT J. A. HUGHES

Like a sundial, an annual records only the sunny hours. In annuals, teachers and even superintendents are unfailingly high-minded, patient paragons; and students do not suffer too much at the hands either of photographers or scribes. Not to be too blunt about it, most of us can stand some glamorizing, both photographically and otherwise.

And, indeed, why not? The essentials are still there. The photographer may remove an unsightly blemish, a stray lock of hair, or even a few wrinkles. But you still recognize your friends, or the portrait-maker would soon be out of business.

This volume will convince anyone that the Class of 1956 was a distinguished group of good-looking, promising youngsters. So indeed it was. It has been wonderful to have you around, and we'll surely miss you when you are gone. The Romans had a phrase for it: *Ave atque vale!* Hail and farewell; or, in freer translation, Hi 'n G'by now! Strange to combine "Hello" and "Goodbye" in one breath, you think? Almost as queer as Shakespeare's "parting is such sweet sorrow."

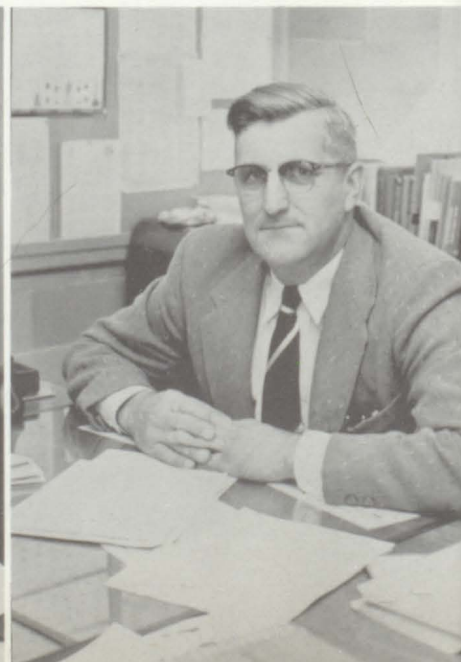
But the stiffest jolt is the very real regret we find mixed in with the joy. For leaving school means the end of some very pleasant relationships, the beginning of some rather formidable responsibilities. It means adjustment, change, uncertainty. And you are right in assuming that life will bring a lot more of the same. The far-distant future will continue to arrive disconcertingly soon, inevitably will bring with it some regret and disillusionment.

Yet the twinkle in the eye is more significant than the wrinkles around it. May you continue to record only the sweet and the sunny, to do a little retouching of your picture of life, not to deny the unpleasant and the irritating, but to put them in proper proportion with the really important things. *Ave atque vale!*

MR. HAROLD MANLEY  
*Assistant High School Principal*  
Bachelor of Science and Master of Arts degrees from University of Minnesota.

MR. FLOYD W. COHOES  
*High School Principal*  
Bachelor of Arts degree at St. Cloud Teachers College and graduate work at University of Minnesota.

MR. GEORGE J. SEDLACEK  
*Elementary School Principal*  
Bachelor of Science and Master of Arts degrees from University of Minnesota.





CAROL BEULKE . . . Bachelor of Arts degree from Hamline University . . . English.



CAROLYN VOGLAND . . . Bachelor of Science degree from University of Minnesota . . . Social Studies . . . English.

## FACULTY

THEA CARPENTER . . . Bachelor of Arts degree from Augsburg College . . . Librarian.



VICTOR HUBAL . . . Bachelor of Science degree from St. Thomas . . . English . . . Assistant Coach.

DONNA KOPPI . . . Bachelor of Arts degree from Clarke College . . . English . . . Speech . . . Art.



LOLA ORMEROD . . . Bachelor of Arts degree from Washington University, St. Louis, Missouri . . . English . . . History.





PAUL RAFFERTY . . . Bachelor of Arts degree from St. Thomas . . . English . . . Latin . . . Journalism.



MARCIA RAMSEY . . . Bachelor of Arts from St. Catherine's College . . . English 8, 9.



JOHN BOBEN . . . Bachelor of Science degree from University of Minnesota, Duluth Branch . . . Social Studies . . . English.



FLOYD WOLTERS . . . Bachelor of Science degree from Mankato State Teachers College . . . Business Relations . . . Typing.

## FACULTY



OLIVER COURTMANCHE . . . Bachelor of Science degree in Business Education from St. Thomas College . . . Business Relations . . . Book-keeping . . . Consumer Math.



LAWRENCE CORRIGAN . . . Bachelor of Science degree from St. Cloud Teachers College . . . Master of Arts degree from Colorado State College of Education . . . Officer Practices . . . Typing . . . Shorthand.



RUSSELL HAMMOND . . . Bachelor of Arts degree from Mankato State Teachers College . . . Industrial Arts.



BRUCE PAINE . . . Bachelor of Science degree from University of Minnesota . . . Industrial Arts . . . Art.

## FACULTY

FORREST RAY . . . Bachelor of Science degree from Mankato State Teachers College . . . Industrial Arts . . . Drivers Training.



KENNETH HANSON . . . Bachelor of Science degree from LaCrosse State Teachers College . . . Social Studies . . . Physical Education . . . Football and Baseball Coach.

HAL HASKINS . . . Bachelor of Arts degree from Hamline University . . . Physical Education . . . Basketball and Track Coach.



RUTH ZOSKE . . . Bachelor of Arts degree from Macalester College . . . Physical Education . . . Health.





HAROLD HEBL . . . Bachelor of Science degree from Mankato State Teachers College . . . Graduate Work at University of Minnesota and Minneapolis College of Music . . . Master degree from Mankato Teachers College . . . High School Vocal Music . . . Elementary Music Supervisor.

ROLLIN NELSON . . . Bachelor of Arts degree from University of Minnesota . . . Music . . . History . . . Band.



MARLA HARFF . . . Bachelor of Science degree from the University of Minnesota . . . Home Economics.

CATHERINE SMITH . . . Bachelor of Science degree from St. Catherine College . . . Home Economics.

## FACULTY



LEE SANDAGER . . . Bachelor of Science and Master of Arts degrees from University of Minnesota . . . FFA . . . Agriculture.

RAYMOND KOLBECK . . . Bachelor of Science degree from University of Minnesota . . . Agriculture.



EDMUND GRUND . . . Bachelor of Science degree from University of Minnesota, Duluth Branch . . . Social Studies . . . Economic Geography.



LESLIE SWAN . . . Bachelor of Science degree from University of Minnesota . . . Social Studies . . . World History.



## FACULTY

HERBERT HARPER . . . Bachelor of Science degree from University of Minnesota . . . Biology . . . Conservation.



KEITH MARKUSON . . . Bachelor of Science degree from University of Minnesota . . . General Science . . . Audio-Visual . . . Driver Training . . . Guidance.



GEORGE NYMAN . . . Bachelor of Science degree from St. Cloud Teachers College . . . Chemistry . . . Physics . . . Higher Algebra . . . Plane Geometry.



ARTHUR MELLENTHIN . . . Bachelor of Science from Mankato State Teachers College . . . Master of Arts degree from University of Minnesota . . . Junior High Science.







PATRICIA SADLER . . . Bachelor of Science degree from University of Minnesota . . . Mathematics.



GALEN CAIN . . . Bachelor of Arts and Bachelor of Science degrees from University of Minnesota . . . Science . . . Mathematics.



LOIS HANLEY . . . Bachelor of Science degree from University of Minnesota, Duluth Branch . . . World History . . . Mathematics. . . Art . . . Dean of Girls.



ELOISE SAMPSON . . . the nurse who cures our ills.

Mrs. Eloise Sampson, school nurse, has a busy daily routine with the caring of headaches, cuts, bruises, tummyaches, measles, toothaches, sore throats and the like.

MELBA . . . the gal that makes the wheels go 'round.

Always ready with a smile, eager to lend a hand, ever busy with never ending duties, a friend in need, cheerful throughout the day . . . that's Melba.





SUPERINTENDENT'S SECRETARIES—Left to right: Muriel Alcock and May Damsgard.

Below:  
GRADE SCHOOL SECRETARY—  
Jeanette Marcott.



*... the girls behind the scenes ...*



OFFICE HELP—Left to right: Marge Harstad, Melba Sahlin, Beverly Sahlin, Ann Goifon, Cynthia Crohn, Rosemary O'Gara, Dorothy Rehbein, Janet Hughes, Pat Flanagan, Marlys Nordin. Background: Diane Johnson.





Above, left to right: Peg Ekdahl, Florence Collins, Linda Rosckes, Inga Schmidt, Agnes Patrin. Across, Front row: Murray Swanson, Frank Collins, Jennie Lindemann, George Okeson. Back row: Al Lellman, Ray Erickson, Millard Olson.

## COOKS CUSTODIANS BUS DRIVERS



Front row, left to right: George Sedlacek, Supervisor, Howard Johnson, Mike Holtzbauer, George Okeson, Irvin Eggers, Joe Gregoire, John Sullivan, Eugene Wright, Richard Alcock, Gerry Haselbauer, John Fanando. Second row: Charles Wells, Dick Hibbard, Paul Sherer, Franklin Sward, Elmer Peterson, Harold Anderson, Charles Kment, Merton Mulvihill, Ken Campbell, Don Johnson. Back row: Otto Parsons, Merrill Dow, Clarence Johnson, George Harguth, Oscar Swenson, Wallace Larson, Carroll Broadbent, Jr., Clem Dupre, Foreman, Mrs. Broadbent.





# SENIORS



RUSSELL (Russ) ALM . . . FFA . . . Football  
. . . Lettermen's Club.

GORDON ANDERSON . . . FFA.

KAREN ANDERSON . . . Nurse Monitor . . .  
GAA . . . FHA . . . Breeze . . . Forester  
. . . Senior Class Play (Crew) . . . Junior Class  
Play (Crew) . . . Stair Monitor . . . Librarian  
. . . Pep Club.

LEILA ANDERSON . . . GAA . . . Bus Patrol  
. . . FHA . . . Student Librarian.

LYLE ANDERSON . . . FFA . . . Football . . .  
Lettermen's Club.

JILL ARUNDEL . . . Pep Club . . . Senior Class  
Play (Crew) . . . Junior Class Play (Cast) . . .  
Christmas Program . . . Stair and Hall Monitor  
. . . Student Librarian . . . Homecoming Princess.

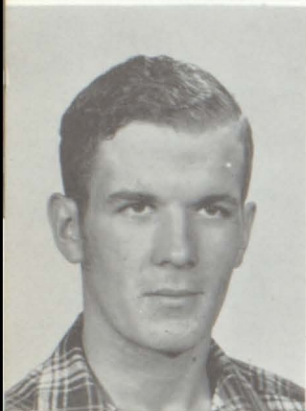




JIM AVERY . . . Forester . . . Photographer . . .  
Transfer from Milltown, Wisconsin.

LOIS BALFANZ . . . Pep Club . . . Thespian  
. . . FHA . . . Breeze . . . Forester . . .  
Senior Class Play (Cast) . . . Junior Class Play  
(Crew) . . . Stair and Hall Monitor.

DAVID (Dave) BAUMANN . . . Junior Class  
Play (Crew) . . . Christmas Program . . . Juke  
Box "Caretaker" . . . Homecoming Car Escort  
. . . Audio Visual.



WALTER BELLAND . . . Bus Patrol . . . FFA.

LOWELL BENSON . . . Stair and Hall Monitor.

KATHRYN (Kittee) BERFELZ . . . GAA . . .  
Choir . . . Pep Club . . . Bus Patrol . . .  
FHA . . . Forester . . . Senior Class Play (Crew)  
. . . Junior Class Play (Cast) . . . Christmas  
Program . . . Stair and Hall Monitor . . . Thes-  
pians . . . Operetta . . . Cheerleader Captain  
. . . Student Council . . . Breeze Co-Editor.

KAY BOHLER . . . GAA . . . Office Help.

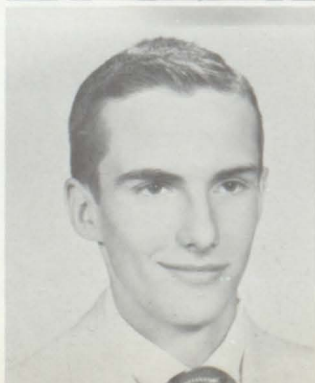
RONALD BOWMAN . . . FFA Reporter . . . Choir.

DARRYL BRADFORD . . . Forester . . . Junior  
Class Play (Cast) . . . Football . . . Baseball . . .  
Track . . . Thespians . . . Lettermen's Club.

GERALD (Jerry) BRINE . . . Forester . . . Senior  
Class Play (Crew) . . . Junior Class Play (Crew)  
. . . Football . . . Basketball . . . Christmas  
Program . . . Audio Visual . . . Thespians . . .  
Lettermen's Club Veep.

NANCY CARLSON . . . GAA . . . Choir . . .  
Pep Club . . . FHA . . . Breeze . . . Junior  
Class Play (Crew) . . . 1-Act Play (Cast) . . .  
Christmas Program . . . Thespians . . . Oper-  
etta . . . Ag Secretary.

RICHARD (Dick) CARLSON . . . Choir . . .  
FFA . . . Senior Class Play (Cast) . . . Junior  
Class Play (Cast) . . . Thespians . . . Student  
Council Veep . . . Operetta . . . Tumbling  
. . . 1-Act Play (Cast) . . . FFA President . . .  
Boys' State . . . Junior Class President.



MARLENE COLLEN . . . Pep Club . . . FHA . . .  
Senior Class Play (Crew) . . . Junior Class Play  
(Crew) . . . Christmas Program . . . Stair and  
Hall Monitor.

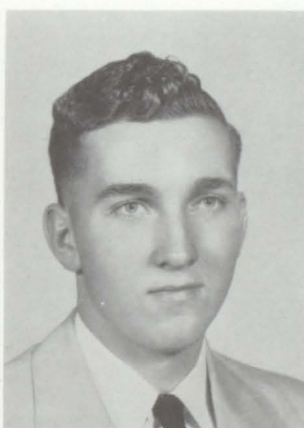
MICHAEL (Mickey) CORBETT . . . Basketball  
. . . Christmas Program . . . Audio Visual . . .  
Student Council . . . Operetta . . . Homecoming  
(Escort) . . . Juke Box "Caretaker" . . . Choir.

RICHARD COX . . . Choir . . . Bus Patrol . . .  
Christmas Program . . . Stair and Hall Monitor  
. . . Audio Visual . . . Operetta . . . Tumbling  
. . . 1-Act Play (Cast).

CYNTHIA (Cyndy) CROHN . . . GAA . . .  
Choir . . . Band . . . Pep Club . . . FHA  
. . . Breeze . . . Forester . . . Senior Class  
Play (Cast) . . . Junior Class Play (Cast) . . .  
Stair and Hall Monitor . . . Thespian Secretary  
. . . Operetta . . . Office Help . . . 1-Act Play  
(Cast).

JANICE DAHLBERG . . . Pep Club . . . FHA . . .  
Senior Class Play (Crew) . . . Stair and Hall  
Monitor . . . Nurse Monitor.

BERNARD (Bernie) DANINGER . . . Forester  
. . . Baseball . . . Basketball Co-Captain . . .  
Lettermen's Club Secretary-Treasurer.



RONALD (Ronnie) DUPRE . . . Band . . . Bas-  
ketball . . . Baseball . . . Lettermen's Club . . .  
Golfing Team.

GLENN EKVALL

RALPH ELLIOTT . . . Choir . . . Bus Patrol . . .  
FFA . . . Christmas Program . . . Operetta.



BERNETTE ERICKSON . . . Pep Club . . . Senior  
Class Play (Cast) . . . Hall Monitor . . .  
Camera Club . . . Student Typist.

CAROL ERICKSON . . . Pep Club . . . FHA . . .  
Stair and Hall Monitor . . . Office Help.

DUANE ERICKSON . . . FFA . . . Senior Class  
Play (Crew) . . . Junior Class Play (Crew)  
. . . Football . . . Baseball . . . Christmas  
Program . . . Student Council . . . Thespians  
. . . Lettermen's Club . . . 1-Act Play.





ELLWOOD ERICKSON

JEANETTE ERICKSON

NORMA FANANDO



AUDREY (Audie) FINGAL . . . Pep Club . . .  
Senior Class Play (Crew) . . . Stair and Hall  
Monitor.

RONALD GAMACHE . . . FFA . . . Sentinel.

JOAN GAMELIN . . . Choir . . . Pep Club . . .  
Forester . . . Senior Class Play (Crew) . . .  
Junior Class Play (Crew) . . . Nurse Monitor  
. . . Operetta . . . Office Help.

EMIL GILLERT . . . Bus Patrol . . . FFA.

JEROME (Jerry) GRUNDHOFER . . . Baseball  
. . . Track . . . Audio Visual . . . Lettermen's  
Club.

DONALD (Don) HAPKA . . . Choir . . . Bus  
Patrol . . . FFA . . . Junior Class Play (Cast)  
. . . Basketball . . . Christmas Program  
Operetta . . . Lettermen's Club

*Best of luck to you always I hope you'll be our senior year class president we must find you!*



MARGARET (Margie) HARSTAD . . . GAA Presi-  
dent . . . Pep Club . . . Breeze . . . Forester  
. . . Senior Class Play (Crew) . . . Junior Class  
Play (Cast) . . . Christmas Program . . . Stair  
and Hall Monitor . . . Office Help . . . Treasurer  
of Senior Class . . . President of Youth Center.

EUGENE (Gene) HAUER

ROGER HAWKINSON



*Margie*

THOMAS (Tom) HEISLER . . . Football . . .  
Baseball . . . Lettermen's Club.

GUILLAUME (Billy) HENSGENS . . . Senior Class  
Play (Cast) . . . Baseball.

WALLACE (Wally) HILLMAN . . . FFA . . .  
Camera Club.



LEROY HOULE . . . Junior Class Play (Cast)  
. . . Football . . . Track . . . Homecoming  
Mr. Football . . . Lettermen's Club . . . Tumbling.

JANET HUGHES . . . Choir . . . Pep Club . . .  
Forester . . . Junior Class Play (Crew) . . .  
Stair and Hall Monitor . . . Operetta . . . Office  
Help.

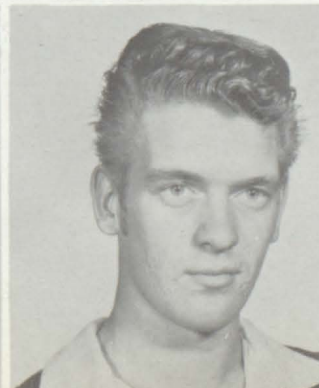
KAREN HURSH . . . Pep Club . . . Choir . . .  
FHA . . . Breeze . . . Forester . . . Senior Class  
Play (Cast) . . . Thespians . . . Operetta . . .  
1-Act Play.



BRUCE JOHNSON

DOLORES JOHNSON . . . Junior Class Play  
(Cast).

DONALD JOHNSON . . . FFA . . . Band.



MARTIN (Marty) JOHNSON . . . Basketball.

SHARON JOHNSON . . . Choir . . . Band . . .  
Pep Club . . . Forester . . . Senior Class Play  
(Crew) . . . Junior Class Play (Crew) . . .  
Stair and Hall Monitor . . . Operetta.

JERRY JOVAN . . . Junior Class Play (Cast)  
. . . Football . . . Track . . . Tumbling.





MARY KAHLSTORF . . . FHA.

DUWAYNE (Dewey) KASMA . . . Senior Class  
Play (Crew) . . . Football . . . Baseball . . .  
Basketball . . . Lettermen's Club.

IVARS KAULS . . . Football Captain . . . Basket-  
ball Co-Captain . . . Track . . . Hall Monitor  
. . . Student Council . . . Lettermen's Club  
President . . . Forester.



KAY KELLING

DAVID KLINEFELTER . . . Choir . . . Band . . .  
Bus Patrol . . . FFA . . . Student Council . . .  
Operetta . . . Senior Class President.

LOUIE KOCH . . . FFA.

*Have fun next  
year! Give it  
a try! We  
got a bad heart  
ache! You know!  
Best of luck  
Nette!*

BERNARD (Bernie) LACOURSIERE . . . FFA.

DENNIS LARSON . . . Bus Patrol.

HARLAN (Harley) LAWRENCE . . . Football  
. . . Baseball . . . Basketball.



VINTON LEWIS . . . Choir . . . Senior Class  
Play (Cast) . . . Christmas Program.

JEANNETTE (Nette) LIGHTFOOT . . . Choir . . .  
Pep Club . . . FHA . . . Breeze . . . Forester  
. . . Junior Class Play (Cast) . . . Christmas  
Program . . . Stair and Hall Monitor . . . Student  
Council President . . . Operetta . . . Homecom-  
ing Princess . . . Alternate Cheerleader . . .  
Sophomore Class Secretary . . . Senior Class Vice  
President.

MILTON LINDGREN . . . Stair and Hall Monitor.



BEVERLY (Bev) LUNDE . . . Choir . . . FHA  
 . . . Pep Club . . . Forester . . . Junior Class  
 Play (Crew) . . . Stair and Hall Monitor . . .  
 Operetta . . . Camera Club.

THOMAS (Tom) LYNCH . . . Band . . . Base-  
 ball . . . Audio Visual . . . Golf Team.

BETH MAKI . . . Choir . . . Cafeteria Help.



JANET MASSICOTTE . . . GAA . . . Choir . . .  
 Pep Club . . . FHA . . . Forester . . . Senior  
 Class Play (Crew) . . . Junior Class Play (Crew)  
 . . . Stair and Hall Monitor . . . Thespians . . .  
 Operetta.

MARILYN MATHESON . . . Choir . . . Band  
 . . . Senior Class Play (Crew) . . . Stair and  
 Hall Monitor . . . Student Librarian.

PATSY McKITTRICK . . . Pep Club . . . FHA  
 . . . Forester . . . Senior Class Play (Crew)  
 . . . Junior Class Play (Cast) . . . Stair and  
 Hall Monitor . . . Student Librarian.



*Donna: Best of  
 luck to you wherever  
 you do in the future, I  
 sure am going to miss you  
 kids next year. It's been  
 wonderful knowing you. Keep  
 that sweet personality. Here's  
 hoping to see lots of you in the  
 future. Love, Janet*



JOAN MOORHOUSE . . . GAA . . . Pep Club  
 . . . Bus Patrol . . . FHA . . . Forester . . .  
 Senior Class Play (Crew) . . . Junior Class Play  
 (Cast) . . . Stair and Hall Monitor . . . GAA  
 Secretary.

MAUREEN MORLEY . . . Choir . . . GAA . . .  
 Forester Business Manager . . . Stair and Hall  
 Monitor . . . Thespian . . . Operetta . . .  
 Junior Class Treasurer . . . Band . . . Senior  
 Class Play (Cast) . . . Junior Class Play (Crew).

JOSEPH (Joe) MULLALY . . . FFA . . . Transfer  
 from St. Paul Murray High School.

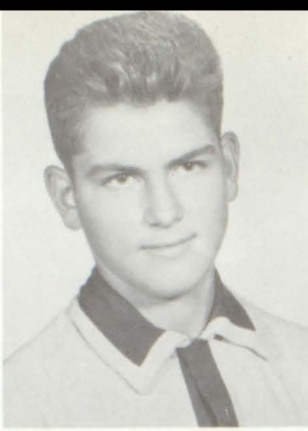


GERALD (Gerry) MULLER . . . Choir . . . Senior  
 Class Play (Crew) . . . Junior Class Play (Cast)  
 . . . Football . . . Track . . . Operetta . . .  
 Lettermen's Club . . . Freshman Class Treasurer.

VIVIAN NELSON . . . Choir . . . Junior Class  
 Play (Crew) . . . Hall Monitor . . . Operetta  
 . . . Junior Class Secretary.

WAYNE NICKELSON . . . FFA.

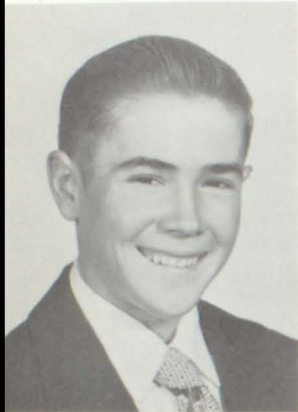




MARLYS NORDIN . . . GAA . . . Pep Club . . .  
FHA . . . Forester . . . Senior Class Play (Crew)  
. . . Junior Class Play (Crew) . . . Stair  
Monitor . . . Nurse Monitor . . . Office Help.

ROBERT (Bob) NOVAK . . . FFA.

ROSEMARY O'GARA . . . GAA . . . Pep Club  
. . . FHA . . . Breeze Co-Editor . . . Forester  
. . . Senior Class Play (Cast) . . . Junior  
Class Play (Student Director) . . . Thespians  
. . . Office Help . . . Camera Club.



JAMES (Jim) PARENTEAU

JERRY (Lefty) PEPIN . . . Football . . . Base-  
ball . . . Basketball . . . Lettermen's Club.

LEE PERRAULT . . . Student Council . . . Home-  
coming Escort.

*Best of luck  
and wishes in  
the future  
"Jerry"*

RUTH PETERSON . . . Pep Club . . . FHA . . .  
Stair and Hall Monitor . . . Sophomore Class  
Vice President.

JEANETTE RAMSDEN . . . Pep Club . . . Bus  
Patrol . . . FHA . . . Hall Monitor.

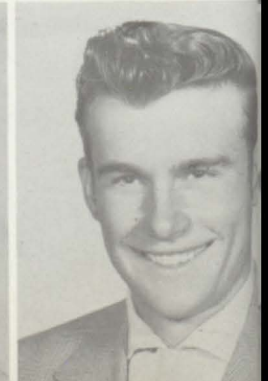
LOUISE REESE . . . GAA . . . FHA . . . Forester  
. . . Senior Class Play (Cast) . . . Junior Class  
Play (Cast) . . . Hall Monitor . . . Thespians  
. . . Student Librarian . . . GAA Treasurer  
. . . Senior Class Secretary.



GLENN REHBEIN . . . Forester . . . Senior Class  
Play (Cast) . . . Junior Class Play (Crew)  
. . . Thespians . . . 1-Act Play.

GEORGE (Tyke) RIECK . . . Choir . . . Forester  
. . . Senior Class Play (Cast) . . . Junior Class  
Play (Cast) . . . Football . . . Baseball . . .  
Thespians . . . Operetta . . . Lettermen's Club.

ALLAN (Al) ROBINSON . . . Bus Patrol . . .  
FFA . . . Junior Class Play (Cast) . . . Tumbling.



JUNE RYALS . . . Pep Club . . . Breeze . . .  
Junior Class Play (Crew) . . . Christmas Pro-  
gram . . . Stair and Hall Monitor.

BEVERLY (Bev) SAHLIN . . . GAA . . . Choir  
. . . Band . . . Pep Club . . . FHA . . . Forester  
. . . Senior Class Play (Student Director) . . .  
Junior Class Play (Student Director) . . . Stair  
and Hall Monitor . . . Thespians . . . Student  
Council . . . Operetta . . . Office Help . . .  
1-Act Play.

GERALDINE (Gerry) SANDSTROM . . . Pep Club  
. . . Stair and Hall Monitor.

ALBERT (Al) SCHROEDER . . . Bus Patrol . . .  
FFA . . . Senior Class Play (Crew) . . . Foot-  
ball . . . Stair and Hall Monitor . . . Committee  
Member for FFA.

LORA LEE SIMMONS . . . Choir . . . Junior  
Class Play (Cast) . . . Pep Club . . . Christmas  
Program . . . Stair and Hall Monitor.

LOIS SOVEREIGN . . . GAA . . . Choir . . .  
Band . . . Breeze . . . Forester Co-Editor . . .  
Senior Class Play (Student Director) . . . Junior  
Class Play (Cast) . . . Christmas Program . . .  
Stair and Hall Monitor . . . Thespians . . .  
Operetta . . . Homecoming Princess . . . Office  
Help . . . Orchestra . . . 1-Act Play . . . Sopho-  
more Class Treasurer.



DAVID STARK . . . Audio Visual . . . Band  
. . . Senior Class Play (Crew) . . . Golfing  
Team.

JAMES (Jim) STUARD . . . Football . . . Bas-  
ketball.

CLYDE SWANSON . . . FFA . . . Baseball . . .  
Basketball.

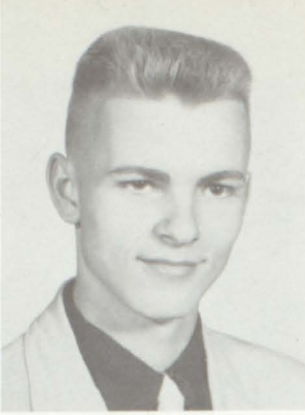


ROBERT (Bob) TAYLOR . . . FFA . . . Junior  
Class Play (Cast) . . . Football . . . Basketball  
. . . Track . . . Lettermen's Club . . . FFA  
Executive Committee.

MARLIN THOMPSON . . . Football . . . Base-  
ball . . . Basketball . . . Lettermen's Club.

JEANNE TIZARD . . . Choir . . . Band . . .  
Bus Patrol . . . Senior Class Play (Crew) . . .  
Junior Class Play (Crew) . . . Office Help . . .  
Ag Secretary.





JANE TURNQUIST . . . GAA . . . Choir . . .  
Band . . . Pep Club . . . FHA . . . Forester  
. . . Senior Class Play (Crew) . . . Junior  
Class Play (Crew) . . . Stair and Hall Monitor  
. . . Thespians . . . Student Council . . . Camera  
Club.

MARDI VAN ELSBERG . . . GAA . . . FHA . . .  
Stair and Hall Monitor . . . Homecoming Princess.

CHARLES (Chuck) WALDO . . . Band.



GLORIA (Glor) WENZEL . . . GAA . . . Choir  
. . . Band . . . Pep Club . . . Breeze . . .  
Forester Co-Editor . . . Senior Class Play (Crew)  
. . . Junior Class Play (Cast) . . . Stair and  
Hall Monitor . . . Thespians . . . Student Council  
. . . Operetta . . . Homecoming Queen . . .  
Cheerleader . . . Girls' State . . . Triple Trio  
. . . Junior Class Vice President . . . Orchestra.

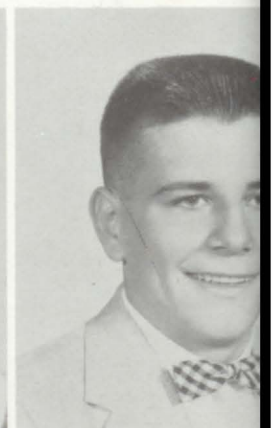
LANORA WHITMAN . . . GAA . . . Pep Club  
. . . FHA . . . Forester . . . Stair and Hall  
Monitor.

LYLE WILLETTE

JAMES WITHAM . . . FFA . . . Football.

VIRGINIA (Gina) WOODRICH . . . Choir . . .  
Pep Club . . . Bus Patrol . . . FHA . . .  
Senior Class Play (Crew) . . . Hall Monitor  
. . . Operetta.

DUANE (Butch) ZWOLENSKY . . . FFA . . .  
Breeze . . . Forester . . . Senior Class Play  
(Crew) . . . Junior Class Play (Crew) . . .  
Football . . . Baseball . . . Track . . . Christmas  
Program . . . Lettermen's Club Executive Com-  
mittee . . . Thespians.



Camera Shy . . .

JERRY CARLSON

REIKO YAMANARI . . . Exchange Student from  
Japan.

MRS. RUTH LINDBERG . . . (Post Graduate).

... Memories Are Made of This ...

HOMECOMING DANCE  
Forest Lake High School Auditorium  
FRIDAY, SEPTEMBER 30  
Admission 50c

WARRIORS  
- 1955 -  
"BRAKE THE BRANCH"  
HOMECOMING-SEPT. 30

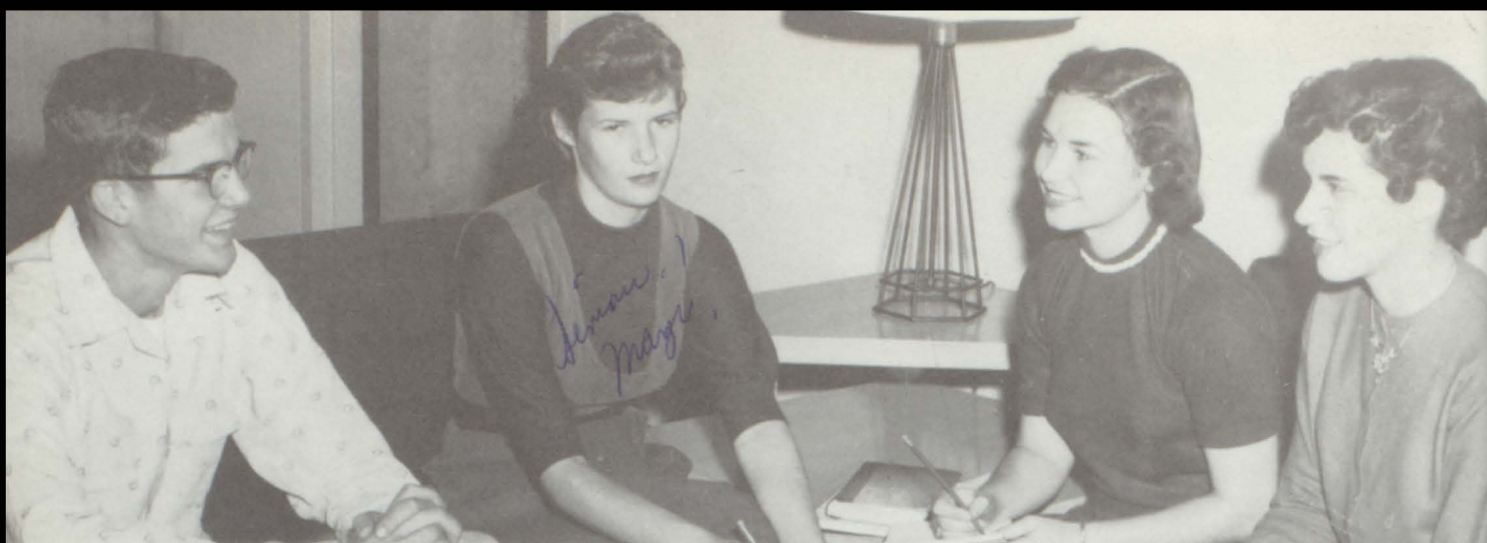
The Vocal Music Department of  
Forest Lake High School  
Presents  
"MINSTREL PARADE"  
Tuesday March 13, 1955 - 8:00 p.m.  
FOREST LAKE HIGH SCHOOL AUDITORIUM  
Admission 75c

BLUE MOON  
Junior-Senior Prom  
Forest Lake



The Senior Class of  
FOREST LAKE HIGH SCHOOL  
Presents  
"The Curious Savage"  
NOVEMBER 4 & 5  
Admission 75c





SENIOR CLASS OFFICERS: David Klinefelter, President; Marge Harstad, Treasurer; Louise Reese, Secretary; Jeannette Lightfoot, Vice President.

## VALEDICTORIAN



GLORIA WENZEL



LOIS BALFANZ



LOUISE REESE



LOIS SOVEREIGN

## SALUTATORIANS

## TOP TEN



Seated, left to right: Lois Balfanz. First row: Patsy McKittrick, Ruth Peterson, Bernette Erickson, Jeanne Tizard, Louise Reese, Gloria Wenzel, Lois Sovereign. Back row: Ivars Kauls, Dennis Larson.







... The Gals and the Crowd Boost the Boys to Victory ...



Kittee  
Captain



Bev



JUNIOR CHEERLEADERS—Left to right:  
Marlys Marier, Susan Pepin, Valerie Dupre  
and Janine West.



Dede



Gloria



**S  
E  
N  
I  
O  
R**



**P  
E  
P  
  
C  
L  
U  
B**

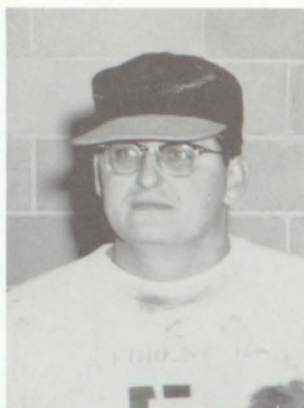


**J  
U  
N  
I  
O  
R  
  
P  
E  
P  
  
C  
L  
U  
B**





# FOOTBALL



The Forest Lake Rangers, under the direction of our new coach, Ken Hanson, assisted by Bruce Paine, began the season with 12 returning lettermen. For the first time, the Rangers used a split "T" formation taking advantage of speedy backs and a swift charging line. One particular game to be remembered was the St. Paul Park rally which was played in mid-afternoon 92 degree heat. At this same game, "Mighty Mouse," LeRoy Houle, suffered two cracked vertebrae which put him out of action for the rest of the season. The Rangers were unsuccessful in "Braking the Branch" at this year's Homecoming. Nevertheless, Coach Hanson admitted that it was the best-played game of the season. Next year's team will lose 12 key seniors, three of whom are All-Conference men. They are Duane Zwolensky, left tackle, George Rieck, right end, and Ivars Kauls, left halfback. The Ranger's Conference record was three and two which put them in a tie with Rush City for second place.

Top left: Head Coach, Ken Hanson, and Assistant Bruce Paine. Bottom left: "B" Team Coach Hal Haskins and Assistant Vic Hubl. Standing: Assistant Coach, Bruce Paine, Gary Houle, Gene Case, Bob Cronk, George Rieck, Darryl Bradford, Ivars Kauls, Duane Zwolensky, Dick Palmer, Duane Erickson, Jerry Brine, Herman Kauls and Coach Ken Hanson. Second row: Bill Volkmann, Cecil Rogers, Jerry Solem, Jim Trudeau, Tom Hollihan, David Rignell, Jerry Pepin, Russell Alm, Bruce Rioux, Norman Lashinger. Third row: Rodney Tuttle, Jerry Muller, Ken Skoglund, John Skoglund, David Ekblad, Juris Kauls, Lyle Anderson, Bert Evgen, Ted Olson, Gene Berglund, LeRoy Houle.





Russell



Lyle



Darryl



Jerry



Duane



ALL-CONFERENCE

These proud and happy boys receiving their All-Conference Certificate are Ivars Kauls, George Rieck, Coach Hanson and Duane Zwelensky.



LeRoy

Captain



Ivars



Jerry

#### BOX SCORE

Rangers..... 7	13..... Chisago
Rangers..... 6	13.... St. Paul Park
Rangers..... 25	19..... Pine City
Rangers..... 0	6.... North Branch
Rangers..... 6	18..... Rush City
Rangers..... 19	7.... Moose Lake
Rangers..... 20	7..... Lindstrom
Rangers..... 19	6..... Mahtomedi



Jerry



Duane



Marlin



Bob



George 31





Above and across are two typical pictures of the extreme tenseness which accompanies every game. Action—you bet!!



Below are the Ranger "B"s; made up of under-class football enthusiasts. They practiced every night under the direction of Hal Haskins and scrimmaged many times with the "A" Team. The purchase of new jerseys was a much-needed improvement. The victory of which the "B" Team was most proud was the 6-0 win over Rush City. The "B"s gained valuable experience which will make them battle-wise by the time they are varsity members.

"B" TEAM—Top row: Jerry Haselbauer, Donald Zak, Robert Witham, Edward Locke, Ziggy Kauls, Eugene Sternberg, Gale Berggren, Daniel Carlson, James Heisler, Eddy Bakeberg, Gregory Pepin, John Olsen, Donald Reese, Coach Hal Haskins. Second row: Robert Bodine, Jerry Thurnbeck, Bernard Preiner, Michael Anderson, Douglas Rignell, Albert Chausee, Arlyn Tolzmann, Robert Schaefer, Joseph Heim, Mike Trepanier. Third row: Leon Houle, Tony Jovanovich, Leo Houle, Dean Larson, Rudy Olson, Thomas Stringer, Francis Faymoville, Joseph Cartier, Dickie Cohoes, Warren Kunchier, Timmy Robinson, and Dick Kunshier.





# BASKETBALL



TEAM—First row, left to right: Jack Mortensen, Jerry Pepin, John Skoglund, Bert Evgen, and Joe Trepianier. Standing: Ronnie Dupre, Bob Taylor, Bob Morehead, Don Hapka, Gary Van Elsberg, Ivars Kauls and Bernie Daninger. Kauls and Daninger are the co-captains.



Coach Haskins



Coaches Hanson, Ray and Hubal

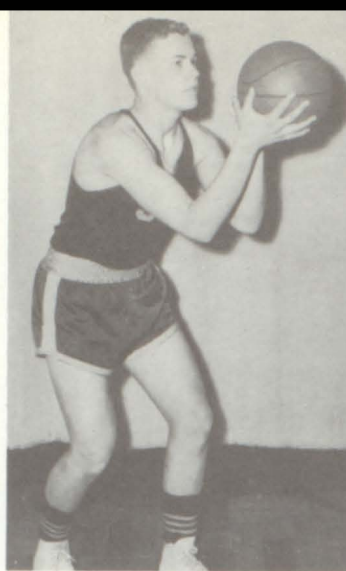




**Bernie**



**Ronnie**



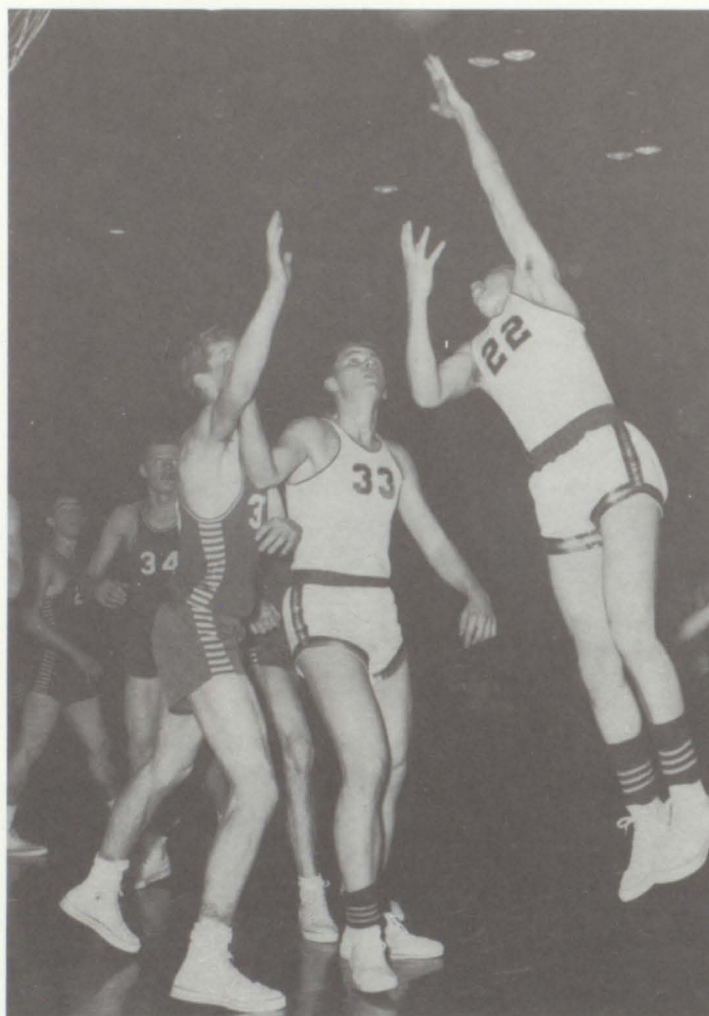
**Jerry**



**Bob**

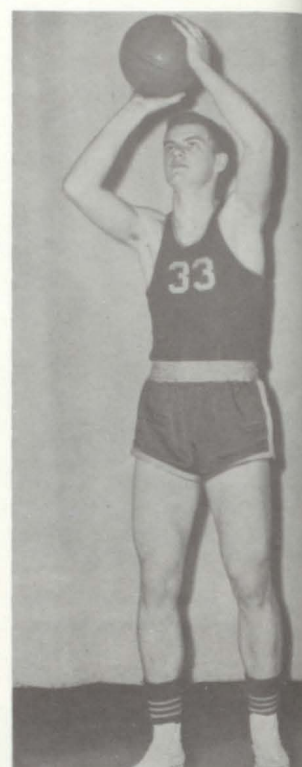


**Ivars**



**DISTRICT 25 CHAMPS**

For the second time in history, the FL Rangers captured the District crown. They finished the scheduled play with a 17-1 record to constitute a "near perfect" season. Not one conference game was lost. North Branch and Pine City were co-hosts to the District Tournament, March 5-9. In the first game of Tournament play, the Haskinsmen trounced the underdog Askov team by a score of 79-51. In the second round of the tourney, our arch rivals, Chicago City met their match and fell victim for the third time to the Rangers, 70-59. The most thrilling and perhaps the most skillfully played game climaxed Ranger's performance at the District Tourney when Lindstrom was outscored by the Rangers for the third time during the season by a 77-73 score. A record number of Ranger fans jammed the North Branch auditorium to see the presentation of the District trophy to the home-town team. The All-District players were also announced and Kauls and Kapka were chosen from FL. The Rangers represented District 25 in Region Eight tournament play at Eveleth.

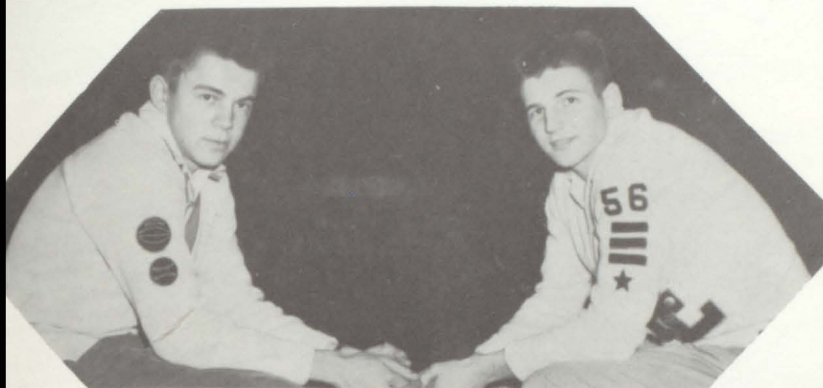
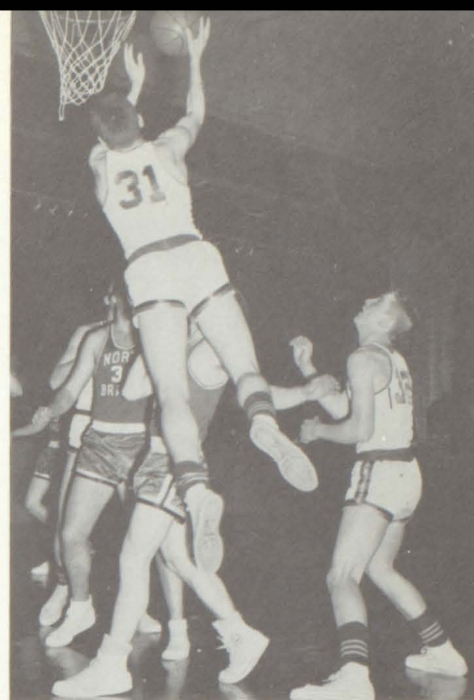


**Don**

### SCORES

FL-68	Elk R.—50
FL-64	St. Paul W.—67
FL-72	Cambridge—41
FL-62	Willow R.—39
FL-61	Rush C.—37
FL-54	Alumni—48
FL-70	Pine C.—28
FL-69	Chisago—56
FL-63	Taylors F.—46
FL-69	Chi-Hi—67
FL-89	North B.—65
FL-73	Rush C.—54
FL-71	Pine C.—47
FL-81	Chisago—68
FL-80	Taylors F.—62
FL-61	St. Paul Murray—57





## RANGERS IN ACTION

At left: Co-Captains Bernie Daninger and Ivars Kauls.



"B" TEAM—Standing, left to right: Gerald Kari, Herman Kauls, Gale Berggren, Gene Case, Zizzie Kauls, Rick Pepin, Jim Trudeau, Coach Victor Hubal. Second row: Greg Pepin, Don Zaki, Ken Skoglund, Juris Kauls, Paul Rasmussen, Dan Thompson, Jerry Haselbauer.





Standing, left to right: Gary Smith, Art Turnquist, George Rieck, Bob Johnson, Bill Volkman—and Ronnie Dupre. Second row: Bernie Daninger, Jerry Grundhofer, Jerry Pepin, DuWayne Kasma, Dick Lynch, Jim Trudeau and Dean Weiss. Third row: Greg Pepin, John Skoglund, Ted Olson, Joe Trepanier, Tom Heisler and Bert Evgen.



"HE'S SAFE," the umpire calls as Ted Olson slides into second base during a practice session. Ron Dupre is attempting the 'out.'

## BASEBALL

The Ranger baseball nine under the expert coaching of Dick Furey, played a 7 win, 2 loss season to place third in the league standings. Spirits were not altered by the 7-4 victory of Pine City over F.L. at the first conference game. Likewise, the 4-2 loss to North Branch found the Rangers still high in hopes. These hopes were fulfilled as a 10-3 victory over Rush City and a 7-2 victory over Lindstrom situated the Fureymen on the conference ladder.





First row, left to right: LeRoy Houle, Burdell Hodges, Jerry Jovan, Bruce Rioux, Norman Grubbs. Second row: Charlie Smith, Ray Johnson, Larry Johnson, Ivars Kauls, Bob Cronk, Gary Houle, Dick Moorhouse. Third row: Coach Boyd, Jerry Muller, Bob Taylor, Don Hapka, Darryl Bradford, Bill Boudreau, Coach Hubal.

## TRACK

The 1955 edition of the Ranger Track Team placed third in the District Track Meet. Coach Pinky Boyd, along with Assistant Coach Vic Hubal, did a fine job of shaping an industrious squad out of the 18 aspirants who answered the call. Two district records were shattered when Kauls ran the 100 yard dash in 10.3 and the 220 in 23.16. The relay team made up of Norman Grubbs, Larry Johnson, Ivars Kauls, and Ai Cronk took first place at the district meet. When asked about the possible status of the 1956 team, Coach Boyd answered, "Several positions will again await names before a balanced squad can be expected to operate."



DASHMEN LARRY JOHNSON and IVARS KAULS, working out for the 220. Kauls set two new district records in the 100 and 220 yard dashes. Johnson placed second in the broad jump and 220.



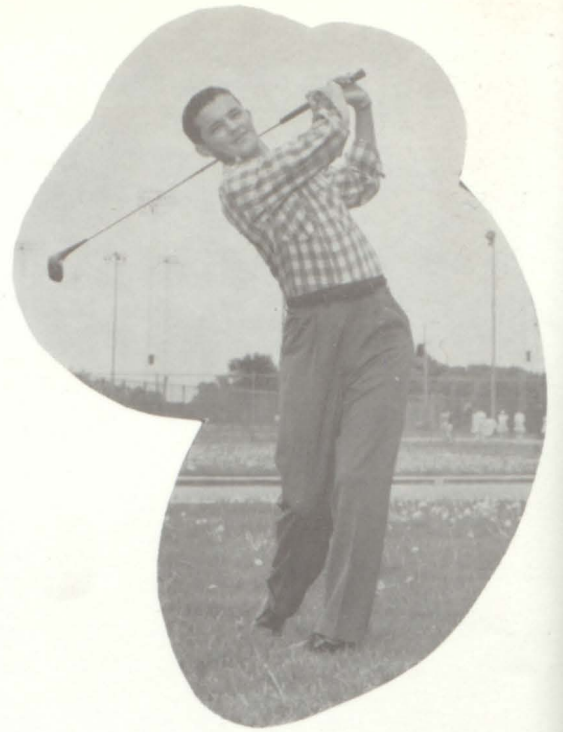


### GOLF TEAM

Left to right: Dick Lynch, Rick Pepin, Mr. Corrigan, Coach, Ron Dupre, Tom Lynch and Dave Stark kneeling.



At left is Tom Lynch pondering a shot.

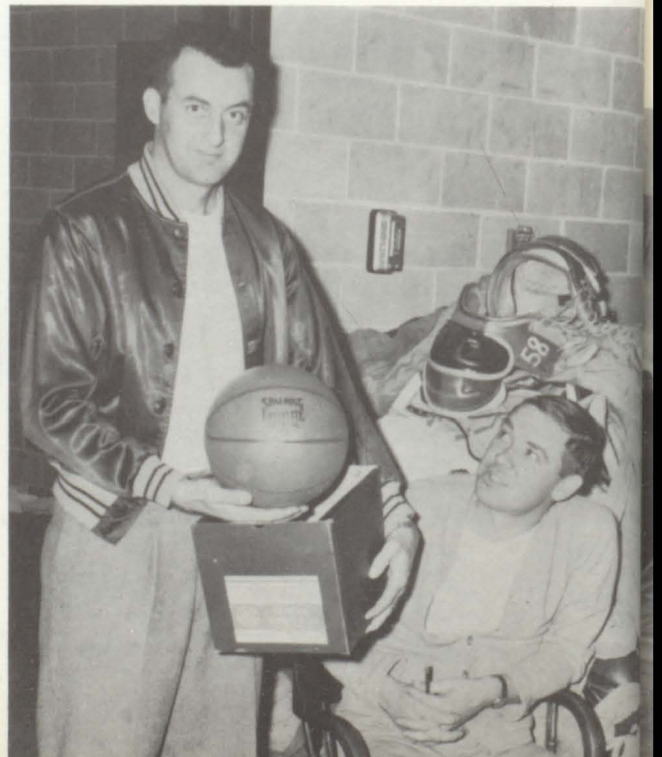


Shown above is Rick Pepin practicing a fairway brassie shot.

Below is an Eighth Grade Gym class doing warm-up gymnastics.



Coach Hal Haskins gets the basketball equipment out of cold storage while Coach Ken Hanson packs the football equipment away as they herald in the new season.



# SPORTS ACTION

Pictured at right is the "C" Team made up of promising young cagers who have the ability and interest in basketball. They participated in inter-squad tournaments.



The typical color and action of tournament time is shown above.

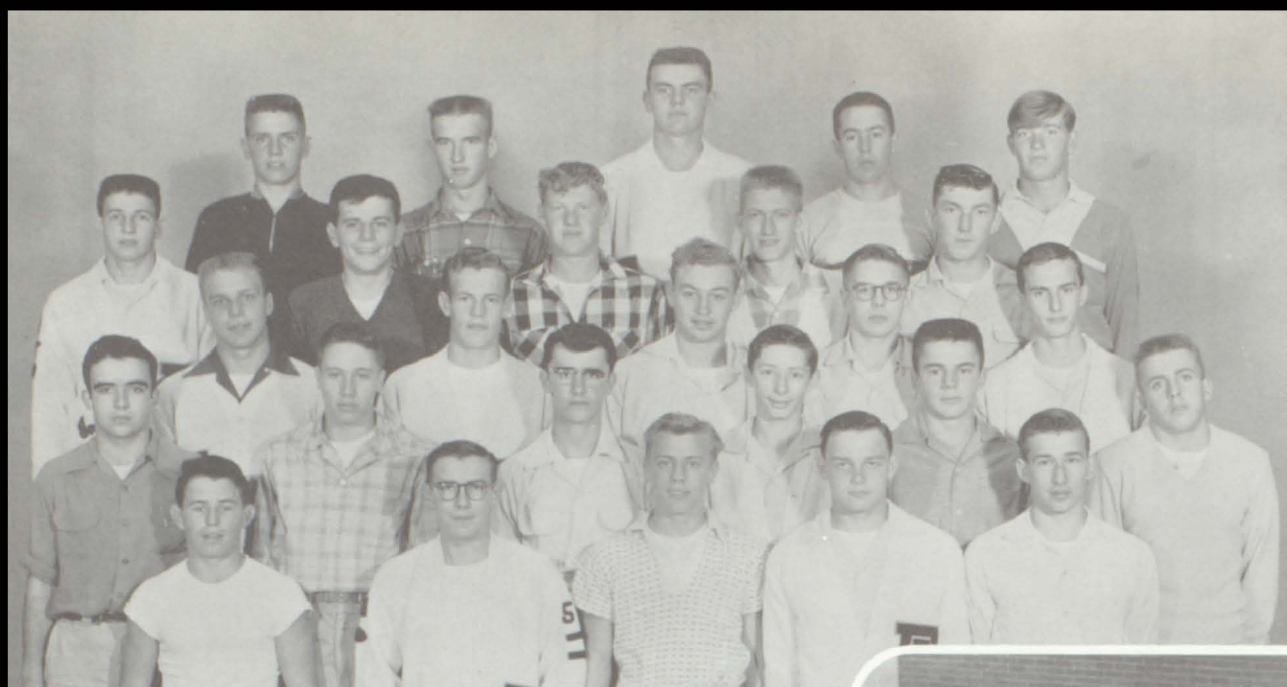


Below and at right are candid shots of the boys' tumbling team. Keep those heads tucked!





# L E T T E R M E N



Front row, left to right: LeRoy Houle, Tom Heisler, Bert Evgen, John Skoglund, Gerry Muller. Second row: Dean Weiss, Jerry Grundhofer, Jim Trudeau, Norm Grubbs, Bernie Daninger, Dave Hermes. Third row: Bill Volkmann, Jerry Pepin, Duane Erickson, Dewey Kasma, Jerry Brine. Fourth row: Ivars Kauls, Duane Zwolensky, Darryl Bradford, George Rieck, Marlin Thompson. Fifth row: Bob Taylor, Bob Cronk, Don Hapka, Butch Van Elsberg, Gary Houle.

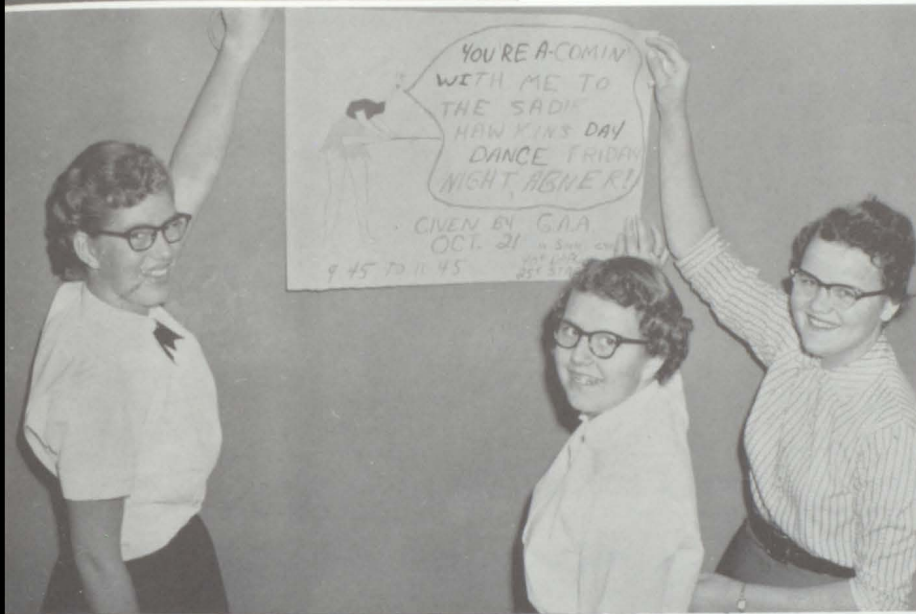


Front row, left to right: Carol Helgeson, Becky Arundel, Marilyn Winick, June Nelson, Connie Frandle, Joyce Stringer, Verna Allison, Joan Emmert, Betty Ciesielski, Judy Holtzbauer. Second row: Mary Ekblad, Phyllis Edstrom, Evalina Turnquist, Marlys Marier, Carol Vigeant, Jane Turnquist, Louise Reese, Joyce Duncan, Dee Forsberg, Janice Sahlin. Third row: Bev Tyler, Maureen Morley, Bev Sahlin, Judy Houle, Eunice Lundquist, Jeannette Ekblad, Karen Bengston, Bev Ciesielski, Mavis Steltzner. Fourth row: Nancy Carlson, Karen Krueger, Gayle Stokes, Nancy Nygren, Diane Thurnbeck, Marlys Nordin, Karen Anderson, Marlys Brehm, Barb Weckerly. Fifth row: Charlene Tolzmann, Pat Schatz, Gerri Rioux, Lois Taylor, Dorothy Baker, Margie Harstad, Lanora Whitman, Janice Hoglund, Joan Schatz.

# G A A



## AN IMPORTANT PHASE OF LEARNING



## A C T I V I T I E S



# HOMECOMING

... 1955



... Homecoming at Forest Lake High School was many things to many people. To some it was a festive, fall occasion; to others it was a football game; but to most it was a gay whirl of events without any one of which there would have been something lacking.

First there was the traditional, colorful parade in the afternoon. Then the warmth of the fall sun livened the spirits of the mass of students gathered on the school's front lawn for the presentation of the princesses to the pep rally.

Evening brought a new aspect of fall to the crowd gathered to watch the football game with North Branch and to see the pageant of color displayed by the band, and the coronation of Queen Gloria by Mr. Football, LeRoy Houle during half time.

Homecoming 1955 at Forest Lake High School closed with the traditional dance in the gymnasium from 10 p.m. to 12 p.m.

P.S. Spirits were not dampened although the Rangers came out on the short end of a 6-0 score . . .

**... they, and their school just love a parade!**



. . . Big moment in the 1955 Homecoming came with the crowning of Queen Gloria by Mr. Football, LeRoy Houle . . .



. . . A jubilant queen and her knight-in-shining-moleskins . . .



. . . Meanwhile, back at the bench, Coach Hanson and his charges ponder over more solemn problems . . .





## THE QUEEN AND HER ATTENDANTS



From left to right are princesses: Jill Arundel, Jeanette Lightfoot, Lois Sovereign, and Mardi Van Elsberg, with Queen Gloria Wenzel in the center . . .

## HOMECOMING SLOGAN



**BRACKET THE BRANCH**



## "Dualear Queen"



Mardi Van Elsberg

## ROYALTY

Donna, I sure have had alot of fun with you this year, always depending on you when I was alone. You sure are a wonderful friend. Just we haven't had any fights this year. Oh! I hope next year is just perfect - I know it will be, and if we only were together - that will be even more fun. It was really nice though.

Donna remember all those times in choir - I don't think I'll ever forget them. They were really inspiring. You have been a great friend out on so many things. How can I ever thank you - I'll

## "F.F.A. Sweetheart"



Charlene Tolzmann

## "Sophomore King and Queen"



Kathy Specha and Bert Evgen

Lehar I decided not to. You have had it off pretty well without any to this year. But watch that stuff just kidding. I hope we get together a real hot this summer. We have to make a point of it.

## "Miss Forest Lake"



Gloria Wenzel

just think Donna now we're left holding the rope we have so many opportunities - to have fun with you that we just have to. The future can mean so very much. - Jerry doesn't know what a wonderful girl he's getting. I hope you're going to wake up and see that I know I'm putting soon to you would sure be a cut couple. Keep your hope. Thanked alot for just everything - you sure are a sweet friend.

Best of luck, Kathy





Left to right: George Rieck as Malvolio, Lois Sovereign as Countess Olivia, Kittee Berfelz as Feste, Jerry Muller as Curio, Jeanette Lightfoot as Valentine and the two musicians, Patsy McKittrick and Joan Moorhouse.

## "TWELFTH NIGHT"

"If music be the food of love, play on." Highlight of the junior year of the class of '56 was their Shakespearean production directed by speech instructor Mr. Wallace Kennedy. The plot of the Bard's hilarious comedy is a mixed up one, indeed, with Viola, Gloria Wenzel, falling in love with the Duke of Orsino, Dick Carlson, and he in love with the Countess Olivia, Lois Sovereign, and Olivia in love with the disguised Viola whom she believes is a boy. George Rieck, as the poker faced Malvolio, is a likely target for the practical jokes of the fun-loving Sir Toby Belch, Maria, and Sir Andrew Aguecheek, played by Darryl Bradford, Louise Reese and Byron Haydn. Sebastian portrayed by Marge Harstad, returns as Viola's long lost twin brother and Viola discarding her disguise marries the Duke. Sebastian and Olivia—Sir Toby and Maria are also married. Kittee Berfelz as Feste, the zestful court jester closes with one of her witty lines and so ends "Twelfth Night."



Above, left to right: Gloria Wenzel as Viola, Dick Carlson as the Duke of Orsino, Lois Sovereign as Olivia, George Rieck as Melvolio. Below: Sir Toby Belch played by Darryl Bradford, Maria portrayed by Louise Reese, Sir Andrew Aguecheek played by Byron Haydn.



The lively antics of Feste, the court jester, portrayed by Kittee Berfelz, added much to "Twelfth Night."







## "THE CURIOUS SAVAGE"

"I hate everything in the world but . . . I hate everything but Mrs. Savage!" So ended the Senior Class play "The Curious Savage" by John Patrick, on a happy note after all. The lively comedy set within the secluded walls of a mental institution, provided many laughs and a few tears too. Mrs. Savage, doublecast by Cynthia Crohn and Rosemary O'Gara, is a lovable though sometimes strange old lady. The plot of her three stepchildren to obtain the fortune left by her late husband lands her in the Cloisters. There she meets and learns to love the friendly patients and soon adapts herself to their happy world of imagination. The patients are played by Bernette Erickson, Maureen Morley, Vinton Lewis, Glenn Rehbein and last but not least the delightful Mrs. Paddy played by Lois Balfanz. Others in the cast are the stepchildren, outwitted in the end, of course, characterized by Louise Reese, Dick Carlson and George Rieck. Completing the cast are the nurse and doctor, Karen Hursh and Bill Hensgens. The production was directed by Miss Donna Koppi, speech instructor.





# CHRISTMAS PAGEANT

"The Other Wise Man," presented as this year's annual FLHS Christmas program, is the story of the fourth Wise Man, Artaban of Ecbatana. Artaban's long search for the Christ begins when he sees the Star of Bethlehem, and his wanderings in search of him continue for 33 years until at last, Artaban, now an old man, finds his Christ at Calvary only to discover that he is too late. The dramatization of the Christmas characters was accompanied by the reading of the story by the two Chroniclers and an effective choral reading by the FLHS choir in the background. Under the direction of Mr. Hebl and Mr. Nelson, the band and choir provided interludes of Christmas music. Miss Koppi was in charge of acting and speaking parts.

Pictured in the background is Dick Carlson, the Chronicler, as he tells the story of Artaban. Below, left to right are: John Smith as Abdus, Rick Pepin as Tigranes, Vinton Marsenius, Mickey Corbett as Abdus, Rick Pepin as Artaban, and Jim Stanek as Chief of the Zoroastrian.

Abdus, played by Rick Pepin, stops to help a dying Jew, portrayed by Vinton Marsenius, along the road to Babylon.

Dick

## THESPIANS

Row, left to right: Rosemary O'Gara, Kittee Berfelz, Louise Reese, Beverly Cynthia Crohn. Second row: Maureen Morley, Nancy Carlson, Lois Sovereign, George Wenzel. Third row: John Smith, Jerry Brine, Darryl Bradford, George Rieck, Dick Carlson.





# MINSTREL PARADE



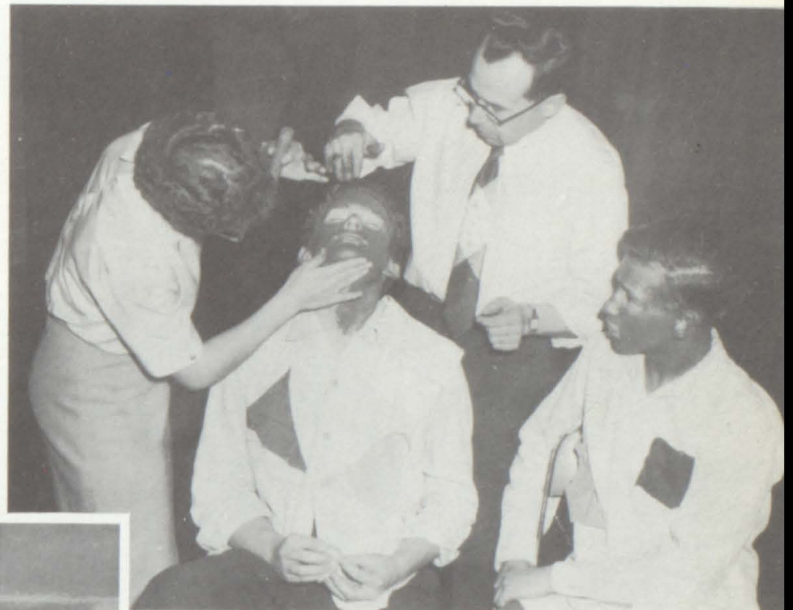
INTERLOCUTOR RICK PEPIN

Right, Miss Carol Buelke and Mr. Harold Hebl, choir director, apply black make-up to Dick Carlson and Jerry Muller.

Mr. Bones, Jerry Muller and Mr. Tambo, Dick Carlson below pose willingly for their picture.



Above, left to right, are the Commentators: Virginia Woodrich, Janet Wahlquist, Dorothy Baker, Lora Lee Simmons, Mary Kuno and pianist Maureen Morley. These are the gals that knit the story together.



"Mr. Bones, ah say, Mr. Bones! . . . Yeah, Mr. Tambo, yo talkin' at me?" These lines are typical of the gaiety and rib tickling antics of the "darkies" in full swing at the Minstrel Parade. The production, presented by the FLHS choir provided laughs galore for audience and show members alike.







Front row, left to right: Tom Lynch, Donald Johnson, Lois Sovereign, Jeanne Tizard, Janice Sahlin. Second row: Jean Hawkinson, Ted Olson, Sharon Johnson, Dede Handrum, Joan Emmert, Judy Houle, Cynthia Crohn, Diane Olson, Paul Nelson. Third row: Joan Schatz, Janice Johnson, Richard Rudin, Evalina Turnquist, Mavis Steltzner, Charles Waldo, Phil Rainer, Bruce Swenson, Ricky Pepin, David Klinefelter. Back row, standing: Sharon Anderson, Kathy Gibbs, David Stark, Dick Lynch, Gary Moen.

## BAND

Our able and efficient band director, Mr. Nelson.



With a deep breath and the downbeat of Mr. Nelson's baton, the FLHS band commenced to play many a song, both classical and novel. The Christmas program, Open House Concert, and other appearances were made in all kinds of weather by the 60 piece band. Never a game or pepfest went by without the band's performance which added that "extra something" to whatever was going on. Of course, we can't forget their marching—Memorial Day, Fourth of July, Homecoming, and various parades in the surrounding area. It is doubtful that anyone in the band will ever forget the Pioneer Day Parade at St. Cloud when the two-mile trek was made in 102 degree heat. Climaxing a successful year, the group gave the seniors a dignified and impressing "send-off" with the familiar "Pomp and Circumstance." Everyone agrees when we say, "Hats off to you, band, and keep up the good work!"





Front row, left to right: Betty Hawkinson, Nancy Nygren, Marilyn Matheson, Mary Ekblad. Second row: Niel Banta, Edward Sedlacek, Gloria Wenzel, Eunice Lundquist, Charlene Tolzmann, Gayle Stokes, Jack Bedham, Jim Stanek, Chester Hapka. Third row: Francis Schlaeger, Clyde Rehbein, David Schatz, Maureen Morley, Jane Turnquist, Paul Parenteau, David Ekblad, John Ede, John Smith. Back row, standing: Ronnie Dupre, Janice Hoglund and Mr. Nelson.

Student Director and Solo Trumpeter, Chuck Waldo.



"Would you straighten my tie, please?" asks Chester Hapka. "Sure will," says Kathy Gibbs as the band makes ready for a performance.



**Ein, Zwei, Drei, Spiel!**



The comical yet talented German Band members are: John Smith, trombone; Chester Hapka, baritone; Bruce Swenson, bass; Don Johnson, clarinet; Tom Lynch, clarinet; and Chuck Waldo, trumpet. Not pictured is Phil Rainer. The group entertained at pepfests and various social events.



**... versatile band in perfect march formation ...**





# GIRLS' ENSEMBLES

GIRLS' ENSEMBLE—Front row: Vivian Nelson, Janet Wahlquist, Virginia Woodrich. Second row: Sharon Johnson, Donna Rae Warner, Beverly Lunde, Gloria Wenzel.



GIRLS' ENSEMBLE—Second row: Jane Turnquist, Janice Sahlin, Cynthia Crohn. Second row: Laurel Matheson, Patsey Johnson, Judy Houle. Third row: Gayle Stokes, Nancy Nygren, Yvonne Bergeron, Charlene Tolzmann.



GIRLS' ENSEMBLE—Front row: Maureen Morley, Marilyn Matheson, Janet Massicotte. Second row: Geraldine Scudder, Barbara Weckerly, Lora Lee Simmons.





## MEN'S QUARTET



Do, Mi, Sol, Do can be heard from Room 311 as the Men's Quartet warms up for a good old-fashioned singing session. The four selected voices are Jerry Muller bass, Chester Hapka baritone, Ricky Pepin second tenor, and Vinton Lewis first tenor.

*... there's a song in the air ...*

The new maestro on the podium, Mr. Hebl.



Student Director, CHESTER HAPKA.

...music, rhythm, harmony, key notes to happiness...



### CHOIR

First row, left to right: Judy Erickson, Sharon Owens, Joan Emmert, Linda Iverson, Reiko Yam-anari, Vivian Nelson, Marilyn Matheson, Marilee Cohoes, Kittee Berfelz, Karen Hursh, Mr. Hebl, Joleen Cowle, Janice Johnson, Dede Handrum, Laurel Matheson, Beverly Tyler, Suzanne Bloom, Janet Hughes, June Onsager, Janet Wahlquist, Kitty DeNio. Second row: Janet Massicotte, Bernice White, Mari Kuno, Maureen Morley, Mary Ekblad, Bev Sahlin, Jane Turnquist, Janice Sahlin, Paul Parenteau, Judy Houle, Kathy Hursh, Susan Corwin, Lorraine Iverson, Evelyn Olson, Patsey Johnson, Karen Bengtson, Jacqueline Alshouse, Nancy Carlson, Jeanne Tizard, Cynthia Crohn. Third row: Michael Moen, Norman Perreault,

Eunice Lundquist, Gayle Stokes, Diane Thurnbeck, Geraldine Scudder, Janice Sullivan, Sharon Johnson, Marlys Brehm, Barbara Weckerly, Donna Rae Warner, Jeanette Lightfoot, Lois Sovereign, Inez Morehead, Geraldine Rioux, Shelby Carlson, Yvonne Bergeron, Jean Hawkinson, Darlene Oothoudt, Beverly Lunde, Lora Lee Simmons, Nancy Nygren, Charlene Tolzmann, Gloria Wenzel, Janet Zwieg, Dick Carlson, Bruce Swenson, Tom Spry, George Rieck, Gene Case, Darryl Sawyer, Dick Moorhouse, Don Hapka, David Kline-felter, Jim Stanek, Vinton Lewis, Chester Hapka, Ricky Pepin, Ralph Elliott, Richard Klinefelter, Jerry Muller, Joan Gamelin, and Dorothy Baker.

For the first time in FL history, the high school choir was made up of 90 voices. Under the able and efficient direction of Mr. Harold Hebl, the group performed at various school events including Open House, Christmas Program and PTA. The MEA Convention this year was entertained by a mass choir of which Forest Lake was a part. This year's big production was the "Minstrel Parade," the only show of its kind ever presented on FL's gigantic stage. Because of the size of the choir, the usual practice room, 311, did not provide adequate space for use. Therefore the "small" gym was used as practice and warm-up room. As usual the choir fared well at the annual contest.



# FORESTER



Front row, left to right: Becky Arundel, Rosemary O'Gara, Judy Erickson, Betty Ciesielski, Mary Ekblad, Kittee Berfelz, Karen Hursh, Louise Reese, Jane Turnquist. Second row: Cynthia Crohn, Bev Sahlin, Maureen Morley, Gina Woodrich, Judy Olson, Janet Hughes, Patsy McKittrick, Gayle Stokes. Third row: Janet Massicotte, Lois Balfanz, Marlys Nordin, Sharon Johnson, Gerri Scudder, Darlene Oothoudt, Jeanette Light-

foot, Mary Lynn Martz, Joan Moorhouse. Fourth row: Bev Lunde, Charlene Tolzmann, Karen Anderson, Joan Gamelin, Marge Harstad, Lanora Whitman, Gerry Muller, Barb Lakamp. Fifth row: Darlene Johnson, Bernie Daninger, Duane Erickson, Dewey Kasma, Gerry Brine, Butch Zwolensky, Darryl Bradford, Tyke Rieck, Glenn Rehbein, Jeanne Tizard.

The 1956 Forester staff, larger than ever before, was also beset by a record amount of work. Editors Gloria Wenzel and Lois Sovereign, aided by more than seventy staff members, got an early start this year and met all three deadlines right on time. Among Forester "firsts" in the '56 book were pages containing fads, the top ten school events and additional sports and miscellaneous pages. Tuesdays and Thursdays after school were set as Forester work nights.



Pictured above, are editors Gloria Wenzel and Lois Sovereign, looking over a previous Forester.



Hard at work on their various Forester jobs are staffers, left to right: Lois Balfanz, Marge Harstad, Joan Gamelin, Bev Sahlin, Marlys Nordin, and Louise Reese.



Business Manager, Maureen Morley



# B R E E Z E



Front row, left to right: Marilee Cohoes, Rosemary O'Gara, Delores Sexson, Betty Ciesielski, Mary Ekblad. Second row: Kittee Berfelz, Karen Hursh, Cynthia Crohn, Alice Alcock, Judy Olson. Third row: Lois Balfanz, Joyce Rimer, Gayle Stokes, Jeannette Lightfoot, Charlene Tolzmann. Fourth row: Marge Harstad, Mary Lynn Martz, Duane Zwolensky, Darlene Johnson, Barbara Lakamp.



BREEZE CO-EDITORS—Kittee Berfelz and Rosemary O'Gara display the 1956 Breeze slogan, "I think it would be refreshing to see at least one paper not rushing with the crowd, but standing by what it believes to be true."

THE BREEZE STAFFERS—Hard at work at a Monday night session are, left to right, Rosemary O'Gara, Lois Sovereign, Jeannette Lightfoot and Janice Sahlin.



Monday looms large to the harried BREEZE editors, Rosemary O'Gara and Kittee Berfelz as they near the weekly deadline. Members of the school paper's industrious staff face a busy week indeed.

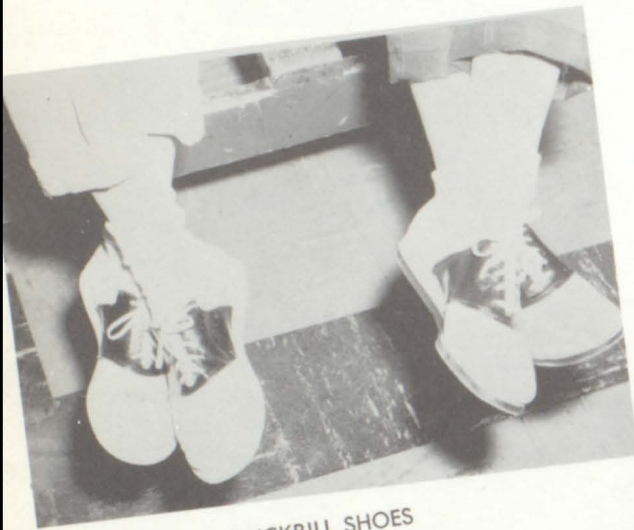
FLHS can truly be proud of its excellent school paper which was honored during both semesters of the school year for its outstanding work in the field of journalism. The BREEZE received an All-American Honor Rating from the National Scholastic Press Association.



# LATEST FADS



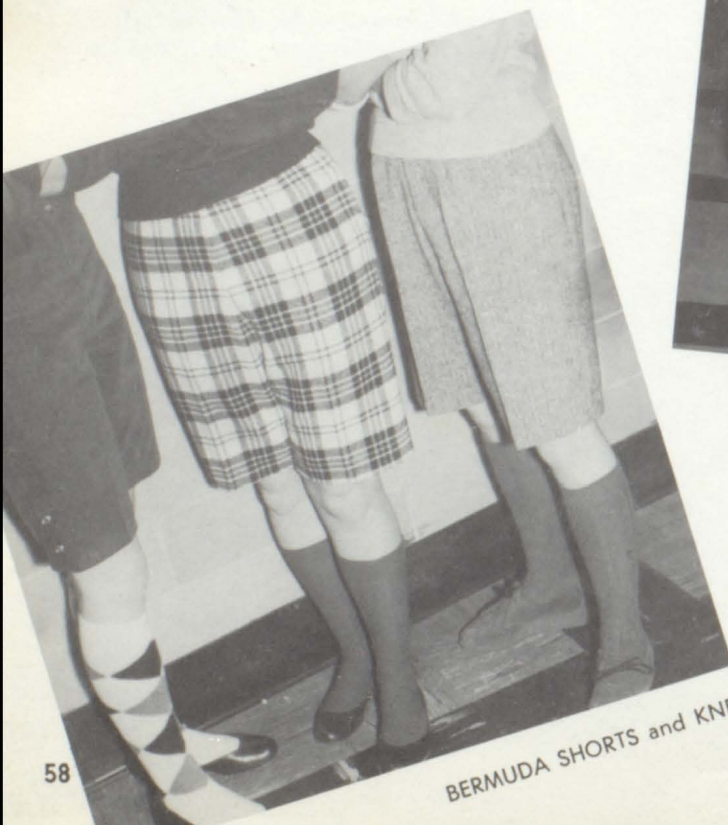
DUCKTAILS, POODLES AND ITALIAN HAIRCUTS



DUCKBILL SHOES



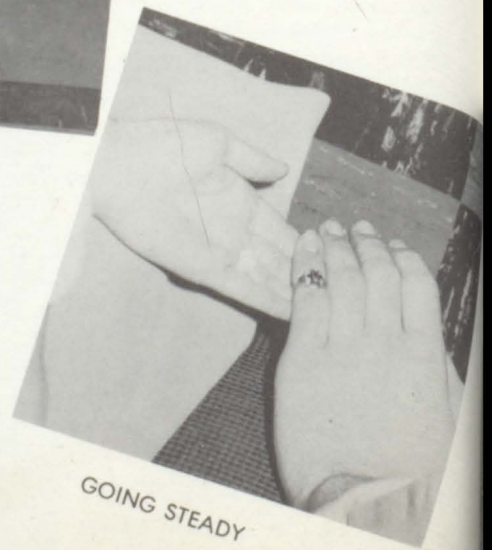
LONG BEADS



BERMUDA SHORTS and KNEE-HIGH SOCKS



HOOP SKIRTS



GOING STEADY



## REIKO YAMANARI



Reiko

This vivacious, brown-eyed lass came to us from Tokyo, Japan under the Foreign Exchange program whose main objective is to promote friendly relations among countries. She lives with the Case family and attends school as a member of the Senior Class. Not only does Reiko learn about America and our way of life, but we also learn from her about Japan and their way of life.



Reiko, who is just as much a fan as any other Forest Laker, is being shown the District Trophy by Mr. Manley. She even wept a few tears of joy at the game.

## DRIVERS' TRAINING



Approximately 45 students receive Drivers' Licenses through the Driver Training program each year at F.L.H.S. The program also includes instruction for those desiring to obtain permits. Students, under expert guidance, learn how to drive by actually operating the vehicle.



At left: David Banks from David Banks' Studios took the Senior pictures found in this book. He also provided various other group pictures.

The Senior Class wishes to express their sincerest thanks and appreciation to Paul Rafferty for his diligent work and never-ending effort to provide the expert guidance and instruction necessary for putting this book together.





# GREEN HANDS



Front row, left to right: Bob Rogers, Raymond Jones, Donald Palmer, Kermit Moen, Raleigh Carr. Second row: Larry Swap, Luke Riopel, John Anderson, Dean Peterson. Third row: Dennis Brown, Jim Dagastino, John Palmer, Daniel Jensen, Pat Delmed-

ico. Fourth row: Delmar Branum, Bill Cournoyer, Donald Wahlberg, Edward Locke. Fifth row: Ernest Strandberg, Richard Jovan, Robert Jasinski, Raymond Young, Daniel Carlson.



## AG INSTRUCTORS

Left: Mr. Lee Sandager

Right: Mr. Ray Kulbeck



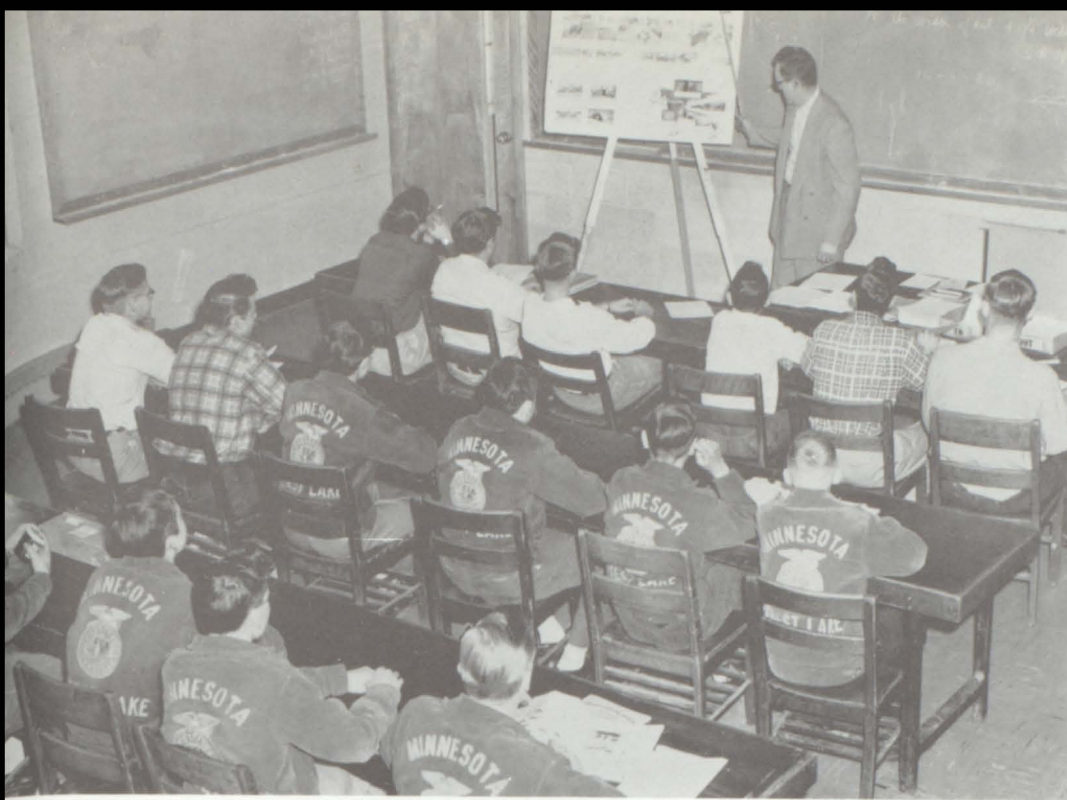
Front row, left to right: Donald Husnik, Niel Banta, Donald Duraine, Joe Delia, Paul Parenteau, Emil Gillert, Ronald Bowman, Harold Carr, Miron Lindgren. Second row: Roy Johnson, Ronald Gamache, Kenneth Waha, Joe Gamache, Norman Perreault, Richard Quigley, Harold Vigeant, Jerry Dupre, Louie Koch. Third row: Lyle Anderson, Mark Swenson, Gordon Schmuck, Roger Buske, Donald Johnson, Allan Robinson, Gene

Leroux, Byron Anderson, Richard Klinefelter. Fourth row: Robert Taylor, Dick Carlson, Dave Rignell, Norman Laschinger, Ronald Anderson, Wayne Nickelson, Bruce Swenson, Joe Mullaly. Fifth row: Roger Bodine, Dale Long, Jerly Marier, Richard Shogren, David Klinefelter, John Lunde, Forrest Sexson, Jim Witham, Gary Houle.

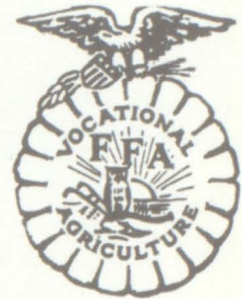
# CHAPTER FARMERS







**F.F.A.**



F.L.H.S.'s Future Farmers of America celebrated their twentieth anniversary this year and continued to pave their way to a successful agricultural future. Highlight of the year was the completion and dedication of the new Agriculture Building including a laboratory, farm shop, conference room, classroom, heating room and office. A few of the many activities of the local F.F.A. Chapter have been the Fall Festival, public speaking, and participation in various District and State F.F.A. contests.



Pictured above, center, are: Advisor, Lee Sandager; Byron Anderson, Darryl Sawyer, Roger Bodine, Dick Shogren. Pictured above are F.F.A. members Roger Bodine and Byron Anderson.



Pictured left to right are: David Klinefelter, F.F.A. Senior Class President; Dick Carlson, F.F.A. President; Advisor, Mr. Lee Sandager; and Bruce Swenson, F.F.A. Vice President.



# F. H. A.



First row, left to right: Virginia Doree, Becky Arundel, Geraldine Johnson, Caroline Erickson, Connie Frandle, Margaret Hollihan, Darlene Pearson, Joyce Stringer, Delores Sexson, Verna Allison, Joan Emmert, Betty Ciesielski, Jean Stanek, Mary Ekblad, Evalina Turnquist. Second row: Janice Johnson, Carole Owens, Mary Jo Drummond, Joyce Winch, Carol Krois, Judy Furman, Marlys Marier, Phillis Edstrom, Jeannette Ramsden, Jane Turnquist, Janice Sahlin, Beverly Tyler. Third row: Dee Forsberg, Joyce Belland, Eudene Hovey, Bernice Maehren, Kathy Gibbs, Jeannette Ekblad, Joanne Proulx, Vienna Kathlstorf, Nancy Carlson, Shirley Odermatt, Eunice Lundquist. Fourth row: Diane Olson, Mavis Steltzner, Karen Krueger, Arlene Grubbs, Beverly Ciesielski, Gayle Stokes, Nancy Nygren, Pat McKittrick, Lois Balfanz, Marlys Nordin, Karen Anderson, Diane Thurnbeck. Fifth row: Joan Moorhouse, Ruth Preiner, Lois Taylor, Dorothy Baker, Charlene Tolzmann, June Sadowski, LaNora Whitman, Janice Hoglund, Barbara Lakamp, Romelle Johnson, Joan Schatz Diane Johnson.

# C A F E T E R I A



First row, left to right: Henry Gregoire, Allan Reese, Timothy Robinson, Larry Edstrom, Earl Halley. Second row: Jim Willette, Kenneth Hansen, Virginia Doree, Rosalie Gamache. Third row: Richard Swenson, Donald Reese, Allen Gunderson, Henrietta Gregoire, Paul Anderson. Fourth row: Joe Bezek, Eileen Johanson, Joe Miron, Paul Johanson, Bruce Vigeant. Fifth row: Robert Bodine, Rae Lou Gamelin, Lois Taylor, Myrtle Lindgren, John Erickson.



# L I B R A R I A N S

First row, left to right: Joyce Rimer, Edith Hyde, Sharon Anderson, Karen Anderson, Dorothy Baker, Mrs. Carpenter, Librarian, Mary Lou Gregoire, Joyce Grundhofer, Betty Ciesielski, Janet McGrath, June Nelson, Jane Anderson, Darlene Johnson.



**HALL MONITORS**—Front row, left to right: Ruth Peterson, Phyllis Merfeld, Becky Arundel, Marilyn Matheson, Judy Erickson, Mary Ekblad, Jane Turnquist, Theresa Hauer. Second row: Vivian Nelson, Louise Reese, Corinne Palmer, Alice Alcock, Beverly Tyler, Bernice Maehren, Virginia Woodrich. Third row: Evelyn Olson, Shirley Odermatt, Eudene Hovey, Sharon Johnson, Mary Johanson, Yvonne Bergeron, Janice Sullivan, Diane Thurnbeck. Fourth row: Joan Moorhouse, Lois Balfanz, Carol Erickson, Marlene Collen, Gerri Sandstrom, Bernette Erickson, Audrey Fingal. Fifth row: Barbara Lakamp, Bonnie Nygren, Margie Harstad, Lanora Whitman, Milton Lindgren, Lora Lee Simmons, Beverly Lunde, Donna Christenson.



## **HALL MONITORS AUDIO-VISUAL CONCESSIONS**



**AUDIO VISUAL**—Front row, left to right: David Stark, Joseph Delia, James Nickelson. Second row: Tom Lynch, Tom Hollihan, Richard Cox. Third row: Mickey Corbett, Forrest Sexson, David Baumann.



**CONCESSIONS**—Front row, left to right: Larry Edstrom, Delores Stark, Sally Drummond, Sharon Peterson, Charlotte Arundel. Second row: Sarah Preston, Joe Cartier, Marie Levine, Mickey Simmons, Judy LaBelle. Third row: Rudy Olson, Clyde Swenson, Judy Brine, Carol Anderson, Nancy Peterson. Fourth row: Judy Gulasch, Boni Avery, Darlene Johnson, Karen Stokes. Fifth row: Sharon Bloom, Sharon Van Syoc, Gail Anderson, Karen Marcott, Diane Warner.





Front row, left to right: Tim Robinson, Dick Rudin, Karen Krueger, Carol Ekblad, Jeannette Lightfoot, Barbara Lakamp, Bernice White, Gary Wettschreck, Laurel Matheson. Standing:

Mr. Manley, Duane Erickson, Dick Carlson, Ivars Kauls, Bev Anderson.



PRESIDENT JEANNETTE

At right is pictured the coat check concession sponsored by the Student Council at all F.L.H.S. basketball games.



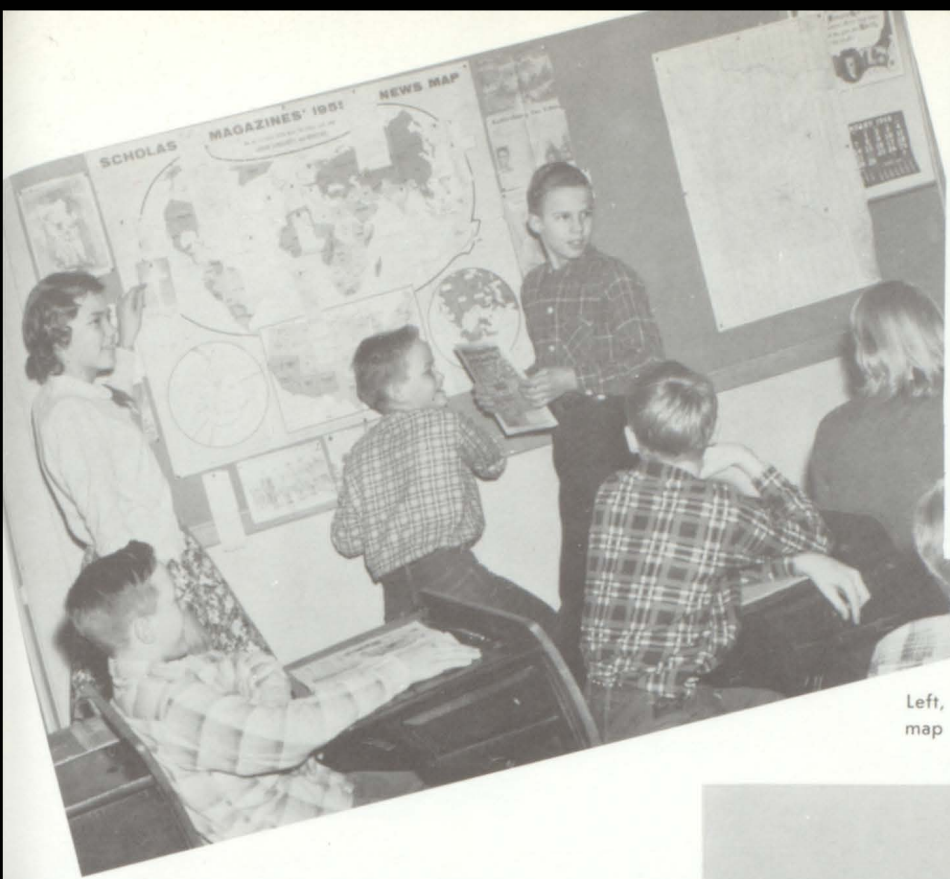
Pictured below are Student Council members as they take time out from duties to enjoy a picnic at O'Brien's State Park.



## STUDENT COUNCIL

Student Council, as F.L.H.S.'s governing body, plays an important part in the organization of student activities and functions. Council members, who are elected by their fellow classmates, represent the student body in the discussion of current school problems. In addition to taking part in various projects throughout the year, they have charge of the merit award program. Four Student Council members, accompanied by Mr. Manley, journeyed to the state convention at Hibbing, where they also toured the iron mines.





Jim Stanek experiments in the biology lab.

Left, students in a social studies class examine a world map and learn about our faraway neighbors.

## *Classroom Candida*



Pictured below and at right are fourth and fifth hour English students, deeply engrossed in dictionary work at the moment.





# TOP SCHOOL EVENTS

1955 Homecoming

The Curious Savage



Exchange Student  
Reiko Yamanari

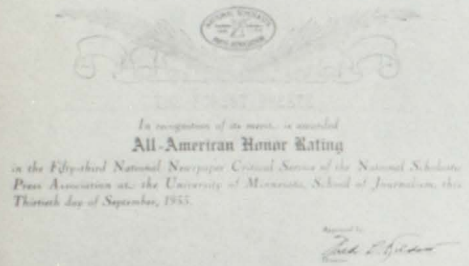
Christmas Pageant



National Scholastic Press Association  
ALL-AMERICAN NEWSPAPER CRITICAL SERVICE

Breeze NSPA Award

Vinton Lewis Sings  
At Music Convention



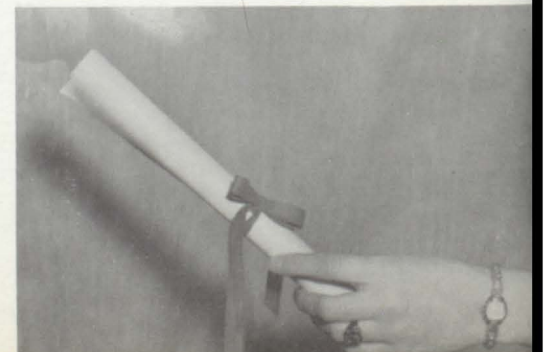
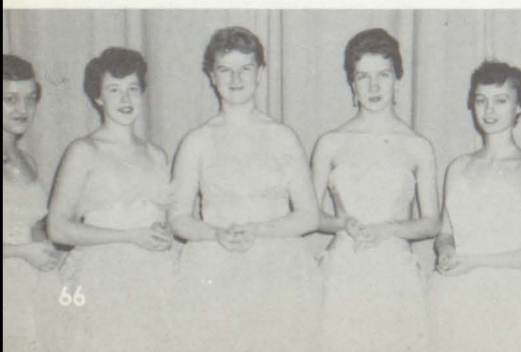
F.F.A. 20th Anniversary

Rangers Win District  
25 Championship



The Minstrel Parade

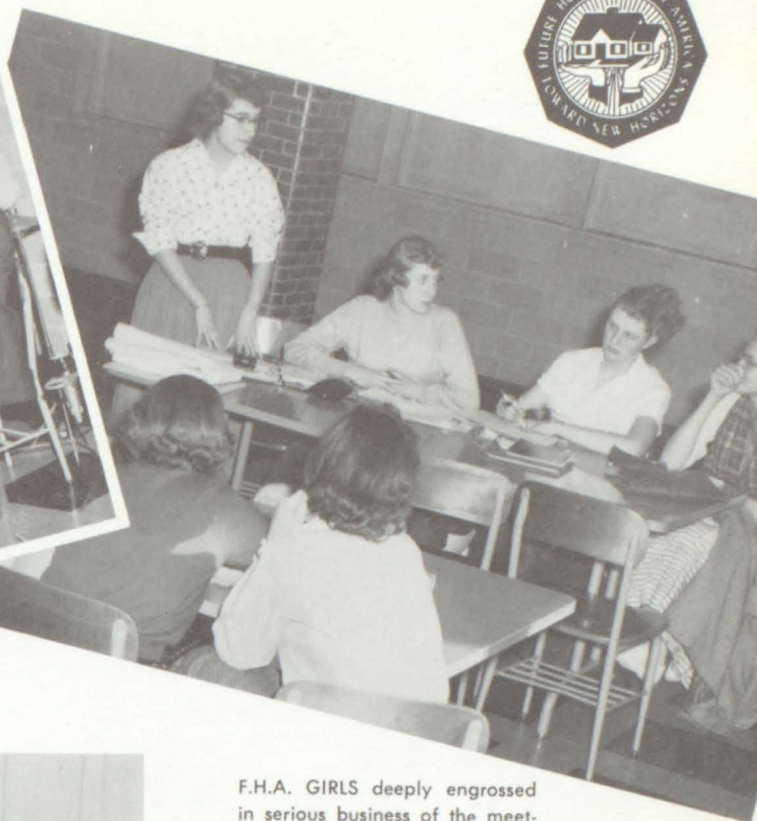
Farewell to Seniors







THE FIFTH HOUR FIVE played at various school dances and for their own amusement.



F.H.A. GIRLS deeply engrossed in serious business of the meeting.



THE JUNIOR CLASS promoted a dancing improvement course in preparation for their big dance.



Mr. Nelson takes time from his various other duties to carry a Second Band program. These students learn early the techniques of band.







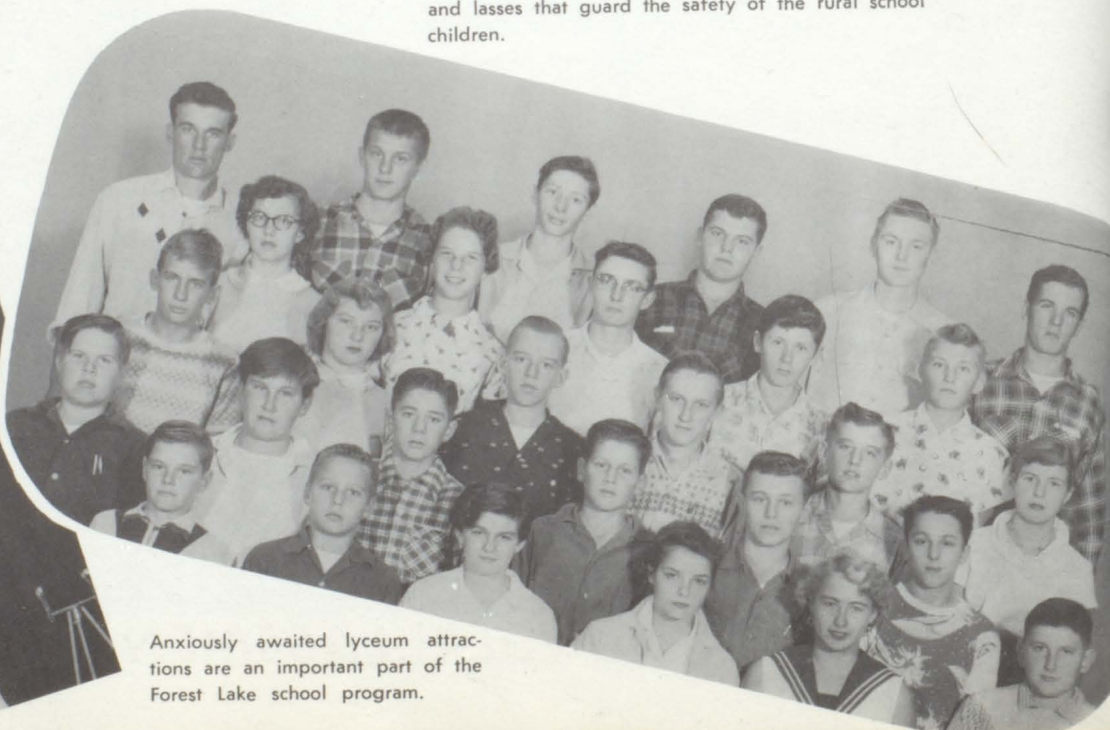
The F.L.H.S. pep band provides lively music for pepfests and various other school activities when a smaller group is more desirable than the full band.

This brave male sporting Bermuda shorts is Dick Carlson.

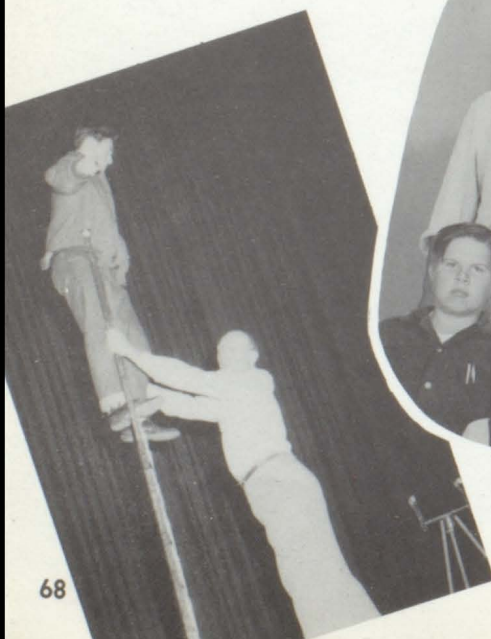


Seniors study income tax.

Below are pictured the bus patrol . . . the lads and lasses that guard the safety of the rural school children.

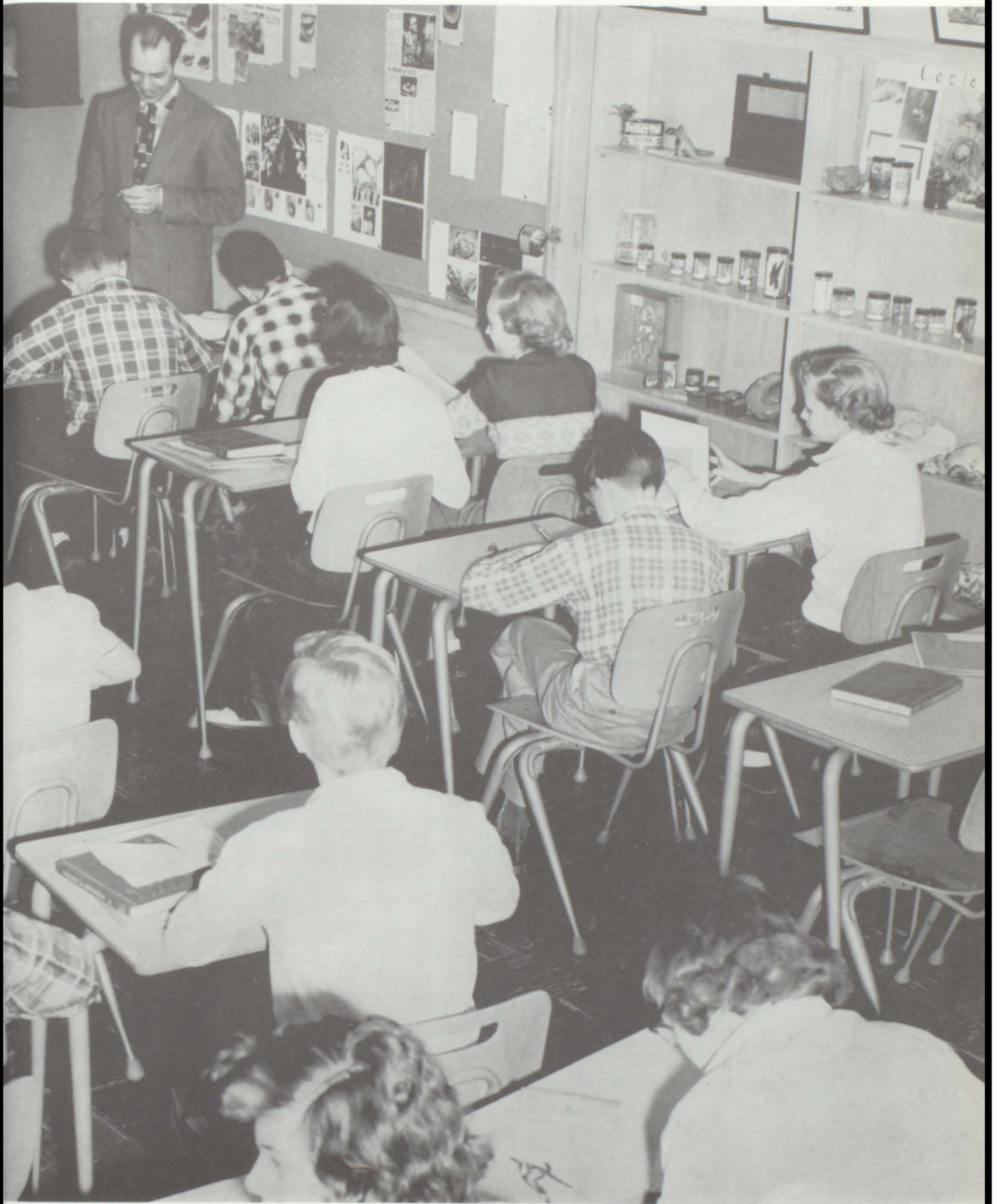


Anxiously awaited lyceum attractions are an important part of the Forest Lake school program.





## *Graduates of the Future*



**UNDERCLASSMEN**



# CHOIR



Front row, left to right: Marilee Cohoes, Charlotte Arundel, Linda Iverson, Kittee Berfelz, Vivian Nelson, Barbara Webb, Joleen Cowle, Karen Hursh. Second row: Joyce Duncan, Bev Tyler, Suzanne Bloom, Laurel Matheson, Inez Morehead, Janet Hughes, Nancy Carlson, Judy Arundel, Evelyn Olson. Third row: Virginia Woodrich, Lorraine Iverson, Kathy Hursh, Sue

Corwin, Janet Massicotte, Yvonne Bergeron, Shelby Carlson, Diane Thurnbeck. Fourth row: Norman Perreault, Jeannette Lightfoot, Lora Lee Simmons, Bev Lunde, Gerry Rioux, Dorothy Baker, Jerry Muller, Richard Cox, Richard Klinefelter. Fifth row: Dick Carlson, Joan Gamelin, Ralph Elliott, Gene Case, Don Hapka, George Rieck, Vinton Lewis, Tom Spry.

# BAND



Front row, left to right: Janice Johnson, Marilyn Matheson, Joan Emmert, DeDe Handrum, Betty Ciesielski, Mary Ekblad, Jane Turnquist, Edward Sedlacek. Second row: Janice Sahlin, Gary Moen, Richard Rudin, Kathy Gibbs, Cynthia Crohn, Maureen Morley, Bev Sahlin, Niel Banta, Clyde Rehbein. Third row: Paul Parenteau, Diane Olson, Judy Houle, Eunice Lundquist,

Mavis Steltzner, Nancy Nygren, Sharon Johnson, Jeanne Tizard. Fourth row: Sharon Anderson, Paul Nelson, David Schatz, Don Johnson, David Ekblad, David Stark, Francis Schlaeger, Ronnie Dupre. Fifth row: Rick Pepin, Janice Hoglund, Charles Waldo, Joan Schatz, John Ede, John Smith, James Stanek, David Klinefelter.



JUNIORS  
ROOM 315

MRS.  
ORMEROD



Front row, left to right: June Nelson, Pat Flanagan, Corinne Palmer, Dee Forsberg, Joyce Belland. Second row: Eudene Hovey, Agnes Kinneman, Josephine Peterson, Gayle Stokes, Joe Trepanier, Marlys Kari. Third row: Jacque Renard, Larry Deskins, Joe Gamache, Gerald Dupre, Charlene Tolzmann. Fourth row: John Skoglund, Byron Anderson, Norman Laschinger, Darlene Johnson, Ronald Anderson, Roger Bodine. Fifth row: Forrest Sexton, Richard Shogren, Tom MacLean, John Lunde, James Helgeson.



JUNIORS  
ROOM 312.  
MR. NYMAN

Front row, left to right: Sharon Owens, Judy Erickson, Mary Jane Elko, Jean Anderson, Mari Kuno. Second row: Judy Olson, Ray Radtke, Geraldine Scudder, Donna Warner, Mike Moen. Third row: Bonnie Nygren, Darlene Oothoudt, Richard Quigley, David Hermes, Rodney Tuttle. Fourth row: Bill Volkmann, Jerry Marier, Darryl Sawyer, Gary Olson.

JUNIORS  
ROOM 317

MR.  
WOLTERS



Front row, left to right: Becky Arundel, Geraldine Johnson, Julianne Bowman, Ted Willette, Alice Alcock, Phyllis Edstrom, Claudia Merfeld. Second row: Carolyn Nelson, Ardyce Dahler, Dyann Cardinal, Joyce Rimer, Bernice Maehren, Dorothy Rehbein, Joe Delia, Joanne Proulx. Third row: Patsy Gamble, Marlys Brehm, Barbara Weckerly, Kenneth Cardinal, Kenneth Albrecht, Roy Johnson, Harold Vigeant. Fourth row: Marcel Lutz, Daniel Ramsey, Dean Weiss, Eugene Cournoyer, Barbara Lakamp, Bruce Rioux, David Benoy, Robert Nelson. Fifth row: Cecil Rogers, Ray Shogren, Dale Long, Glenn Larson, Roger Erickson, Gary Van Elsberg, Gary Houle.





SOPHS  
ROOM  
125  
MR.  
CORRIGAN

Front row, left to right: Virginia Doree, Rosalie Gamache, Phyllis Merfeld, Shirley Entner, Kathleen Spescha, Verna Allison. Second row: Eileen Ott, Theresa Hauer, Galen Dahlberg, Donald Duraine, Ronald Weiss, Harold Carr, Barbara Shoenrock. Third row: Lois Pederson, Robert Quist, Shirley Odermatt, Betty Klein,

Connie Van Syoc, Myrtle Lindgren. Fourth row: Roger Kroger-son, Barbara Lunde, Mary Johanson, Edith Hyde, Vienna Kahlstorf, Arline Grubbs, Romelle Johnson. Fifth row: Norman Grubbs, Jerry Jensen, Gerald Solem, LeRoy Howard, Diane Johnson, Bob Cronk.



SOPHS  
ROOM 313  
MR.  
HUBAL

Front row, left to right: James Swenson, Leon Schmidt, Gene Berglund, Dean Miller. Second row: David Mattson, Jerome Rosengren, Bert Evgen, Howard Hueckendorf, Kenneth Waha. Third row: Eugene Leroux, Gordon Schmuck, Kenneth Skoglund, Edgar Frandle. Fourth row: Willis Cropsey, David Rignell, Walde-mar Hanke, James Trudeau.

SOPHS  
ROOM 213  
MR. HARPER



Front row, left to right: Delores Sexson, Joseph Miron, Myron Lindgren, Therese Willette, Carolyn Erickson. Second row: Barbara Westlund, James Nickelson, Donald Husnik, Beverly Gluck, Everett Carlson. Third row: David LeVesseur, Rae Lou

Gamelin, Lowell Palmer, Donald Worth, David Benson. Fourth row: Roger Buske, Bob Prettyman, William Lind, Mark Swen-son, Patrick Cook.





FROSH  
ROOM  
112

MR.  
PAINE

Front row, left to right: David Kammerer, Donald Zak, Donald Cook, James Willette, George Davison, Lloyd West. Second row: Alan Van Elsberg, Bob Witham, Alan Olson, Daniel Thompson, Tom O'Gara, Gerald Gardner. Third row: Hugh Hehner, Edward Bakeberg, David McGovern, Stephen Vogel, Daniel Jensen, Pat Delmedico. Fourth row: Tom Weber, Eugene Sternberg, Zigurds Kauls, Gale Berggren, Gary Weckerly, Jim Heisler.



FROSH  
ROOM 216

MISS  
SMITH

Front row, left to right: Donald Reese, Joyce Stringer, Dick Levine, Joyce Winch, Kenny Damsgard. Second row: Keith Anderson, Richard Johnson, Richard Carlson, Donald Ekblad. Third row: Herman Kauls, Paul Rasmussen, Yvonne Sovia, David Schultz, Garnet Bergerson.



FROSH  
ROOM  
321

MISS  
RAMSEY

Front row, left to right: Bryan Alshouse, Connie Frandle, Dennis Lange, Margaret Hollihan, Jean Behrens, Jean Stanek. Second row: Kenny Renard, Robert Ede, Pat Hamelin, Carol Krois, Greg Pepin, Carol Vigeant, Mary Jo Drummond. Third row: Gordon Garrison, Donald Mortonson, Dawna Shosten, Judith Fehrman, Carl Dahlberg, Donald Banta. Fourth row: Janet Gamble, Flora Hulsman, Beverly Ciesielski, Ruth Preiner, Steven Stockdill, Jeannette Lunde. Fifth row: Dick Stark, Lois Taylor, Mary Lynn Martz, Gerald Kari, June Sadowski, Arthur Berglund.





EIGHTH  
ROOM  
223

MR.  
HASKINS

Front row, left to right: Kathleen Sullivan, Lloyd Bergstrom, John Houle, Sarah Preston, Judith Alcock, Ruth Anderson. Second row: Cherie Owens, Ruth Palmer, Judith La Belle, Judith Williams, Carol Sandstrom, Sharon DeLong. Third row: Janice Grundhoefer, Judith Brine, Juris Kauls, Dale Pederson, Judy

Behrens, Leon Erickson. Fourth row: Richard Muller, Jack Lightfoot, Donald Dow, Alfred Miron, Gerald Anderson, Michael L'Allier. Fifth row: Ronald True, Joy Jasinski, David Stankevicz, Leon Erickson, Michael Casey, Dennis Gustafson.

EIGHTH  
ROOM  
323

MR.  
BOBEN



Front row, left to right: John Duncan, Karen Gamache, Donald Quigley, Charlotte Arundel, Marjorie Schmitt. Second row: James Istvanovich, Marie Levine, Steven Lindberg, Sherrol Swanson, Gary Nelson. Third row: Karen Berglund, Carol Anderson, Renee Wyman, David Larson, Linda Jensen. Fourth row: Sharon Pearson, Judith Mortenson, Thomas Corbett, Kenneth Anderson, Darlene Norton. Fifth row: Robert Bodine, Marilyn Proulx, David Franzen, Karen Deskins, Raymond Monson.



EIGHTH  
ROOM  
218

MR.  
MELLINTIN

Front row, left to right: Richard Kunshier, Dorothy Johnson, Tim Southall, Stanley Nelson, Paul Anderson, Dean Larson. Second row: Clyde Swenson, Nancy Petersen, Robert Lindgren, Henrietta Gregoire, Wanda Donovan. Third row: Katherine Berdan, Edward Dupre, Boni Avery, Paul Johanson, Duane Boyer, Douglas Rignell. Fourth row: Mary Oberg, Karen Stokes, Dean Haynes, Sharon Bloom, Shirley Genz, Sharon Van Syoc, Jerry Gerlich, Jerry Corwin, Gail Anderson, Karen Marcott, Robert Moorhouse.



EIGHTH  
ROOM  
225  
MISS  
BUELKE



Front row, left to right: Nicole Ott, Sandra Cote, Tom Parenteau, Barbara Strecker, William Davison, Allan Gunderson, Sharon Peterson, Daniel LaCoursiere. Second row: James Houle, Michael Trepanier, Carolyn Booren, Karen Reiter, Kenneth Johnson, Leon Muellner, Robert Shoberg. Third row: Janet Iverson, Carol Ekblad, Roberta Anderson, Liliane Kauls, Judith Gulasch, Gloria Grubbs, Jack Benham, Walter Marier. Fourth row: Allan Broadbent, Rae Ann McKittrick, Nancy McKittrick, Diane Warner, Cliff Berggren, John Erickson, Kenneth LeVessuer.



EIGHTH  
ROOM  
217  
MR.  
CAIN

Front row, left to right: Henry Gregoire, John Laurie, Karen Strandberg, Warren Kunshier, Diane Cedergren, Heather Boese. Second row: Margaret Burden, Carolyn Banta, Joseph Heim, James Cournoyer, Franklin Nordin. Third row: Robert Schlaeger, Clarence Cole, Jim Dupre, David Bradford, Sandra Olson. Fourth row: Joy Ann Ramsden, Linda Johnson, Joyce Gulasch, Mona Duraine, Jerome Thurnbeck. Fifth row: Billy Morehead, Mary Hapka, Pat Anderson, Pat Peterson, Douglas Johnson.

SEVENTH  
ROOM  
106  
MISS  
VOGLAND



Front row, left to right: Dennis Preston, Jim Patraw, Andrew Hauer, Gerald Fingal, Arthur Kost, Timothy Robinson. Second row: Sue Hueckendorf, Delores Stark, Kenny Dufresne, Sally Drummond, Joyce Webb, Joe Cartier, Carol Bechtold. Third row: Chris Matlon, Dennis Johnson, Rudolph Olson, Joe Bezek, Eddie Timm, Gregory Goodine. Fourth row: William Cruse, Judith Mattson, Gail Lundgren, Kathryn Nickelson, Carol Johnson, Mary Brisson, Sharon Perreault. Fifth row: Grace Fuglie, Ronald Schatz, Arlene Young, Wanda Kahlstorf, Raymond Anderson, Douglas Streitz.





SEVENTH  
ROOM  
109

MR.  
SWAN

Front row, left to right: Jerry Garrison, James Carlson, Donald Mielke, Lawrence Carlson, Howard Kluender, Dennis C. Johnson. Second row: Kermit Sandstrom, Charles Nordin, Jerry Steiro, John Cook, Larry Berglund, Darrell Thurnbeck, Eugene Riopel. Third row: John Fehrman, Judith Mulvihill, Betty Hawkinson, Karen Johnson, Sandra Rioux, Cynthia Franzen. Fourth row: Gary Zak, Michael Anderson, Vivian Anderson, Darril Boyer, Mickey Simmons, Janet Marier, Richard Hardenbrook. Fifth row: Eileen Johanson, Sharon Winch, Marcella Perrault, Gloria Ebel, Bernard Preiner, Janet Collen, Cecelia Locke.



SEVENTH  
ROOM  
114

MR.  
RAY

Front row: Jenelle Strecker, Larry Retherford, Kathleen Willette, Jeannette Miron, Myrna Bowman, Lorraine Maehren, Joan Frandel. Second row: Patricia Colburn, Kenneth Hansen, Richard Cohoes, Richard Wyman, Valerie Dupre, Geraldine Anderson. Third row: Kathy Howley, Francis Faymerville, David Nickelson, Diane Lindell, Douglas Latew, Judy Linehan, Marvin Sandgren. Fourth row: Sandra Shosten, Sharon Proulx, Virgil Springer, Leon Houle, Tony Jovanovich, Dennis Gamble. Fifth row: Douglas Peterson, Dennis Booran, William Cruse, Sue Pepin, Kay Hallberg, Joan Johnson, Raymond Allison.



SEVENTH  
ROOM  
325

MISS  
SADLER

Front row, left to right: Alan Reese, Janine West, Kenneth Grubbs, Wayne Moody, Larry Edstrom, Eugene Waldoch. Second row: Earl Halley, Dellis Lange, Carol McKittrick, Karen Schmidt, Betty Ede, Judith Bengtson, Pamela Cardinal. Third row: Jeanne Odermatt, Darlene Gillert, Janice Macziewski, Thomas Stringer, Mylo Shoberg, Susan Drummond. Fourth row: Robert Roseth, Loren Friberg, Leo Houle, Charlene Larson, Barbara Broadbent, Albert Chausee, Sandra Peterson. Fifth row: Geraldine Howat, Arlyn Tolzmann, Bruce Vigeant, Darlene Johnson, Virginia Sternberg, Paul Johnson.



... We Hope You Will Patronize ...



A  
D  
V  
E  
R  
T  
I  
S  
I  
N  
G

Remember Your Appearance  
Is Important

**COTTAGE BARBER  
AND  
BEAUTY SHOP**

Compliments of

**CARTER'S JEWELRY  
AND  
RECORD SHOP**

**CARA-VAN DAIRY**

"Forest Lake's Own Dairy"

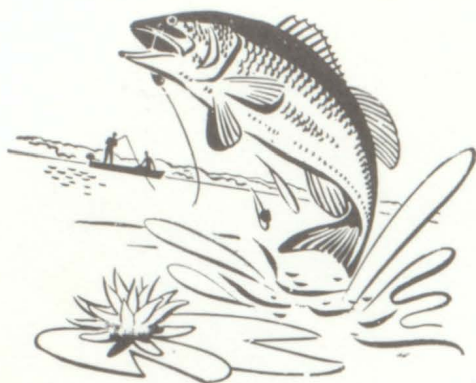
DROP IN AFTER SCHOOL  
TO THE DAIRY BAR

- For Sodas
- For Sundaes
- For Cokes



... These Forester Supporters ...





**BOB JOHNSON  
SPORTING GOODS**

Forest Lake

Best Wishes From  
**MARSHALL - WELLS  
STORE**

Keep That New Car  
in Top Condition  
at the Sign of  
**FRIENDLY SERVICE**



At the Sign of  
**FRIENDLY SERVICE**

Compliments of  
**PETERSON  
DRUGS**

**STOKES OIL**

Forest Lake, Minnesota



**RED OWL AGENCY**

Phone 2171

CLARENCE A. DICK, Owner

Congratulations, Graduates!

**J. B. WEISSER  
LUMBER CO.**

**. . . Shop Where You Can Save . . .**





Compliments of  
**EGAN**

## HOVEY EQUIPMENT CO.

- INTERNATIONAL TRUCKS
- FARMALL TRACTORS
- WELDING



Phone 2180

CONGRATULATIONS, GRADS  
and Remember  
**FOREST LAKE  
GREENHOUSE**

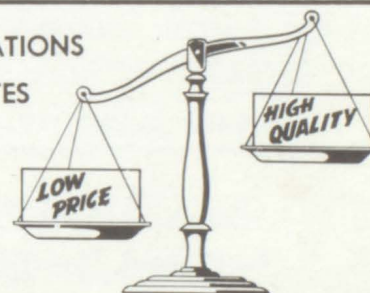
FOR THAT SENIOR PROM CORSAGE



SENIOR PICTURES BEING TAKEN

Best Wishes to Grads  
**HOULE GROCERY**

CONGRATULATIONS  
GRADUATES



**EARLING'S APPAREL**

Forest Lake

... **Picture Yourself Getting Your  
Money's Worth...**



Start it here!

**Forest Lake State Bank**

Best Wishes From  
**F. C. BERGH DRUGS**  
 Dependable  
 Druggist



**HORNING'S FEED & PRODUCE**  
 FEED AND PRODUCE  
 South of Forest Lake on Hwy. 61

**... Your Local Dealers Are Ready to  
 Serve You ...**

**TWIN LANES STORE**

Groceries Cold Meats  
 Soft Drinks



MOBIL GAS AND OIL

CONGRATULATIONS  
 From Your Forest Lake



Best Wishes  
 for a Successful Future for

Forest Lake Grads

**C. M. HALLBERG  
 E. C. HALLBERG  
 K. W. HALLBERG  
 GMC**





**VOGEL'S**  
Bar and Restaurant

FOR GOOD FOOD



**COTTAGE CLEANERS**

Quality Dry Cleaning  
Quick Service Laundry  
PHONE 2123  
Free Pickup and Delivery

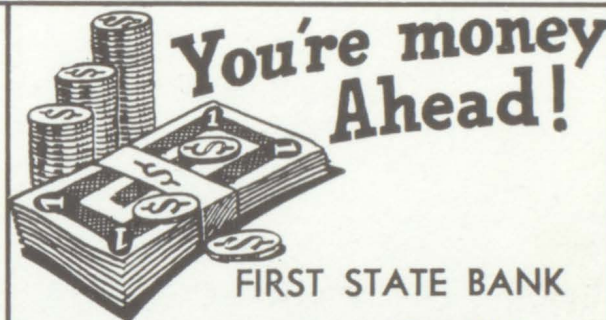
FINE CLASS RINGS  
ANNOUNCEMENTS  
YEARBOOKS  
AWARDS

**JOSTEN'S**  
SINCE 1897

**. . . Buy Locally, Save Locally . . .**

**JACK'S**  
**SPORT SHOP**

LIVE BAIT                      BOATS  
ALUMA CRAFT                EVINRUDE  
   MOTORS  
All Sportsmen's Needs



**You're money  
Ahead!**

FIRST STATE BANK  
OF WYOMING  
WYOMING, MINNESOTA

We Wish You Success  
After Graduation  
**DR. N. M. MENSHEHA**  
**DR. L. T. WOOD**



Best Wishes From  
**HENNEN**  
**CHEVROLET COMPANY**

No Finer Service  
 No Better Deal  
 Anywhere!

AUTHORIZED CHEVROLET DEALER



TO THE GRADUATE  
 Sincere Wishes for  
 Continued Success



Best Wishes to Grads  
**DR. J. M. LYONE**

HAMBURGERS AND FRENCH FRIES  
 SHRIMP BASKET  
 SWIRLY TOP  
 SOFT DRINKS  
 STRIPE DRIVE-IN

*Best Wishes "Dad"*  
**BETTER GROCERIES**

Meats  
 Milk Products  
 Frozen Foods  
 Fresh Fruits and Vegetables

**RUDY'S  
 SUPER MARKET**



Students Receive  
 Driver Training Car  
 for Instructional Purposes

**HURRY!**



to  
BETTER BUYS  
at

ENQUIST HARDWARE



**Remember**

Keep Movin', Grads  
MORLEY TRANSFER

**BEST POLICY**

31 AT ALL  
TIMES



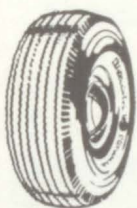
Compliments  
of

**H. A.  
ANDERSON**

Congratulations, Grads!  
INSURANCE — REAL ESTATE  
INCOME TAX SERVICE

Best Wishes

**STANLEY'S TEXACO**

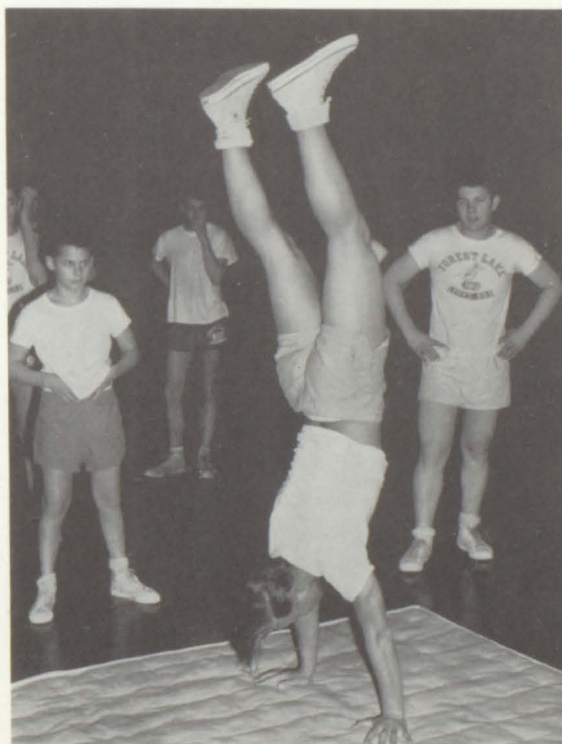


**REUB'S  
TIRE SHOP**  
TIRE HEADQUARTERS  
Phone 2245



Compliments  
of

**VOGEL'S INN**







**RAY JEANS**  
**FARM MACHINERY HEADQUARTERS**  
 MINNEAPOLIS-MOLINE FORD  
 Telephone 322



*Better Values*

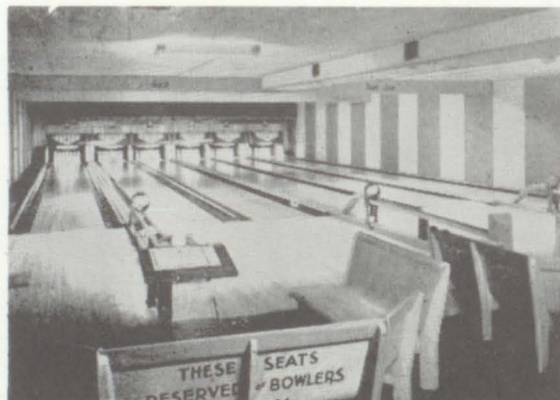
FOREST LAKE  
 DEPARTMENT  
 STORE



**Be a Sport, Shop and Save . . .**

*Forest Lake Lanes*

Finest Bowling Conditions



*Commercial Hotel*

"Where All Sportsmen Meet"

*Donna, I don't think I'll ever forget the good times I'll have with you. I don't think I'll ever forget the good times I'll have with you. I don't think I'll ever forget the good times I'll have with you.*

**BEST WISHES TO GRADS**  
 From  
**DR. C. D. LARSON**

**KENCO INC.**

Phone 483

Forest Lake

GOOD LUCK  
From  
**DR. G. M. RUGGLES**



BEST WISHES  
From



Best Wishes From  
**BENSON**

AND  
**PETERSON**

OLDSMOBILE  
JOHN DEERE IMPLEMENTS.



**RUPPERT & IVERSON**

Your Local Headquarters  
for Plumbing and Heating

... You Can Rely on Their  
Dependability ...



**E. J. HOULE  
COMPANY**

Forest Lake, Minn.

**STRUBBLE AGENCY**

Insurance

Quality in Education,  
Morals and Merchandise  
Is Worth Striving for  
**EARL SPRY BUICK**

*Donna -  
Good Luck to a  
swell kid -  
Have fun this  
summer and be  
a good girl.  
Jerry M.*





Money  
and  
Time



**BEN FRANKLIN  
STORE**

Health Is Worth Enjoying  
**DR. W. M. LEWIS, D.C., Phc.**  
CHIROPRACTOR

Good Wishes to the  
Class of '56  
**DR. O. R. VAN WIRT**

Congratulations  
to the 1955 Graduates

**DOUG'S  
STANDARD  
SERVICE**



*Donna  
Best of luck to  
a swell league!  
I'm sure you'll be your  
full in new thing this  
attempt at your this  
Summer. Love you  
Bob Taylor*

**FAREWELL**









LITHOGRAPHED BY

**TAYLOR PUBLISHING CO.**

DALLAS • TEXAS

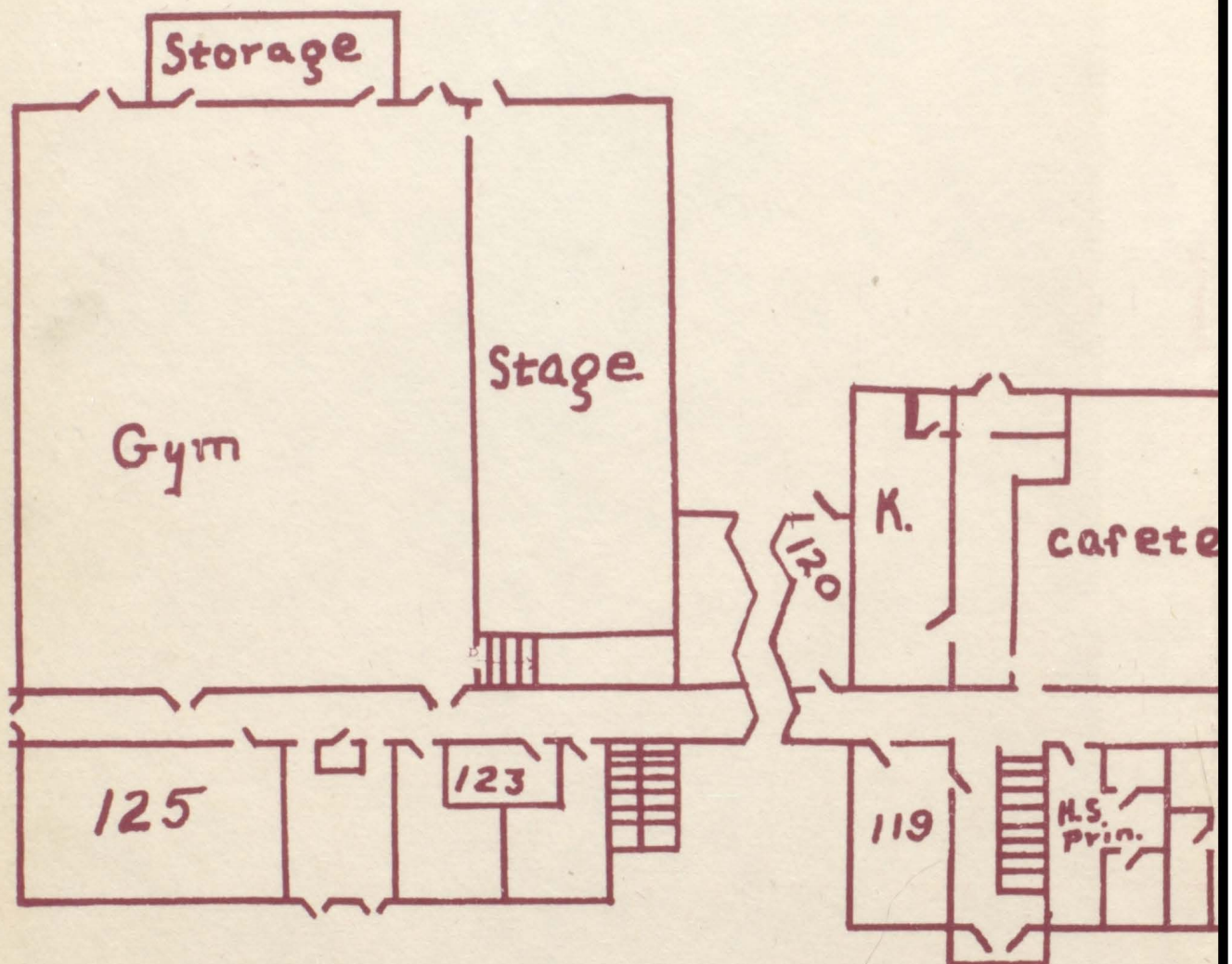
The Best Yearbooks are TAYLOR-MADE

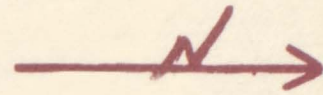




7

# HIGH SCHOOL 1st Floor





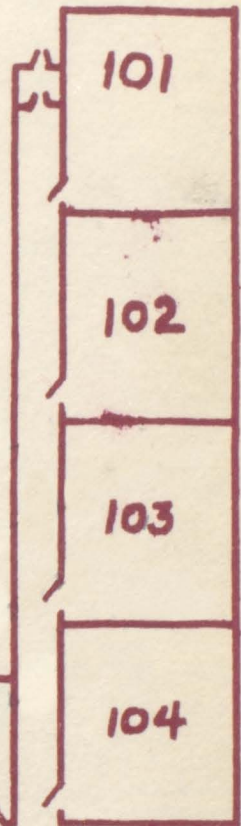
Music  
Studio



SHOP



M.S.B.

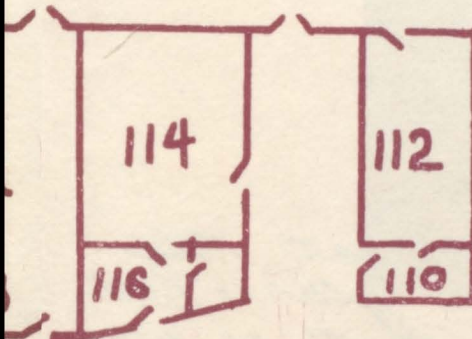


101

102

103

104



114

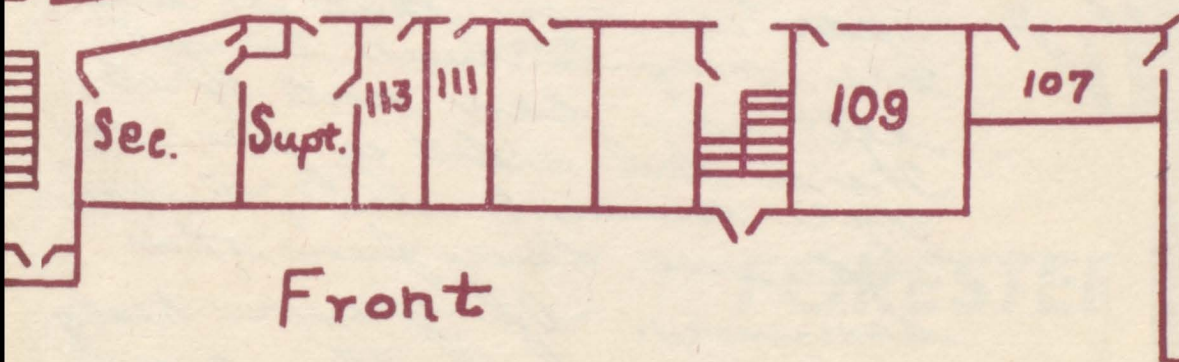
112

108

106

116

110



Sec.

Supt.

113

111

109

107

105

Front



