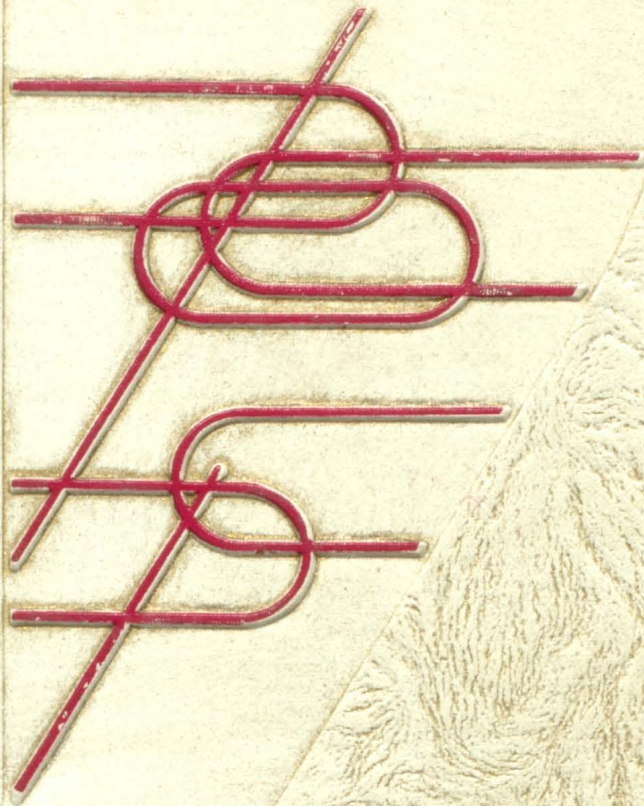


1955



F
FORESTER

THE ARITHMETIC OF BETTER BUSINESS

McMACKIN
MARSH
BATEN

AGRICULTURE
IV

AMERICAN
FARMING



BOSS
WILSON
PETERSEN

WEBB

Applied
SECRETARIAL
PRACTICE



Youth
faces
its
problems

Pressing
Martin

Laidlaw

66



Adventures
in English
Literature

INGLIS, COOPER,
OPPENHEIMER
and BENET



FOURTH
EDITION

II

USING
LATIN

SCOTT
GUMMERE
HORN

SF



English
in
Action

TRESSLER

COURSE
FOUR

FOURTH
EDITION

HEATH



GREGG
SPEED
BUILDING
SIMPSON

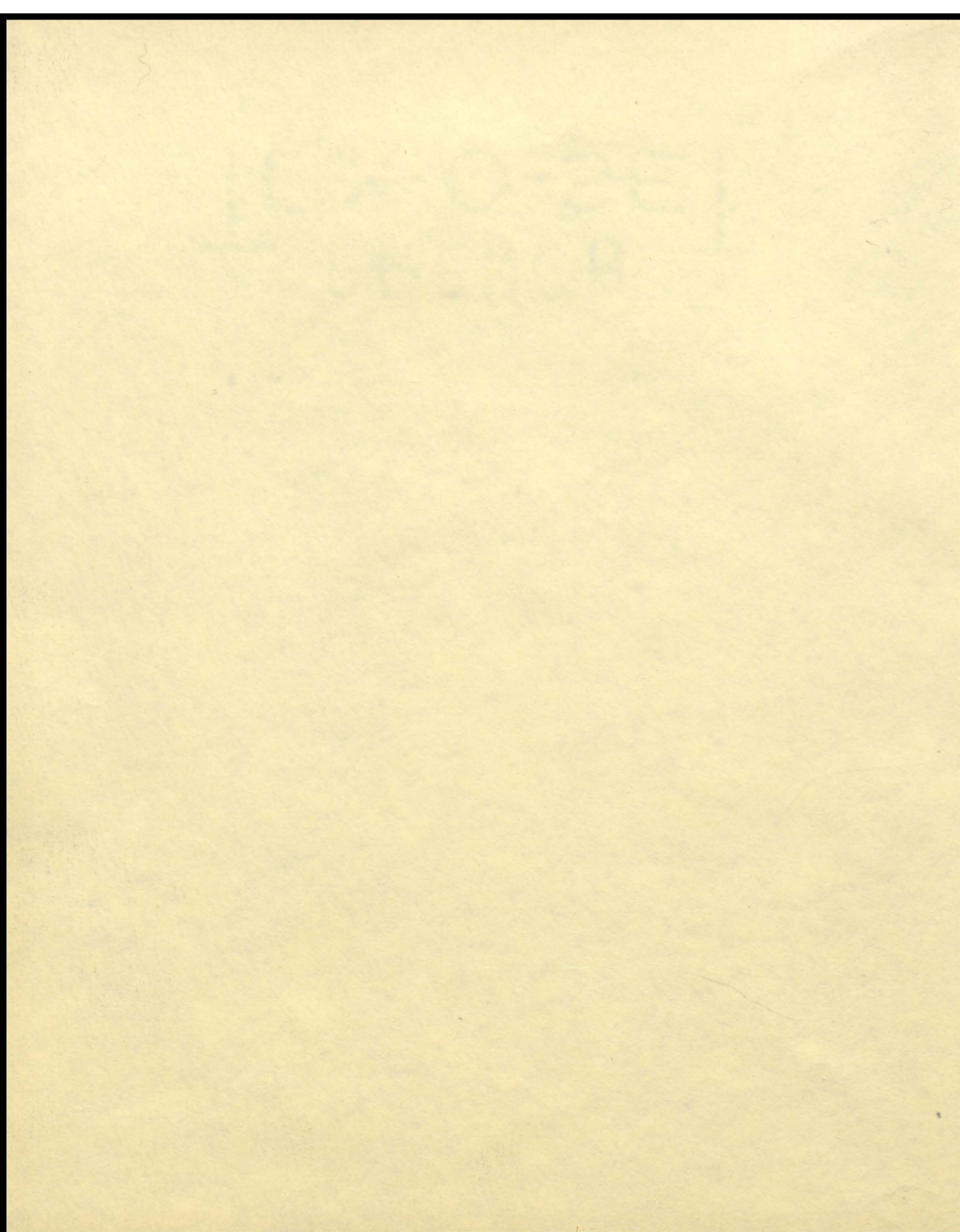
GREGG
LESSON
BOOK

Chemistry
and You



LYONS &
CARNAHAN

AL
A
BA



FORESTER

1955



Forester Staff

Editor: Vida Hovey

Copy: Glenna Case, editor; Marcia Emmert

Photography: Betty Mae Broadbent, editor

Art: Lu Anna West, editor; Elaine Schroeder

Business: Janet Pederson, manager; Marlene Palmer, Donald Elwell

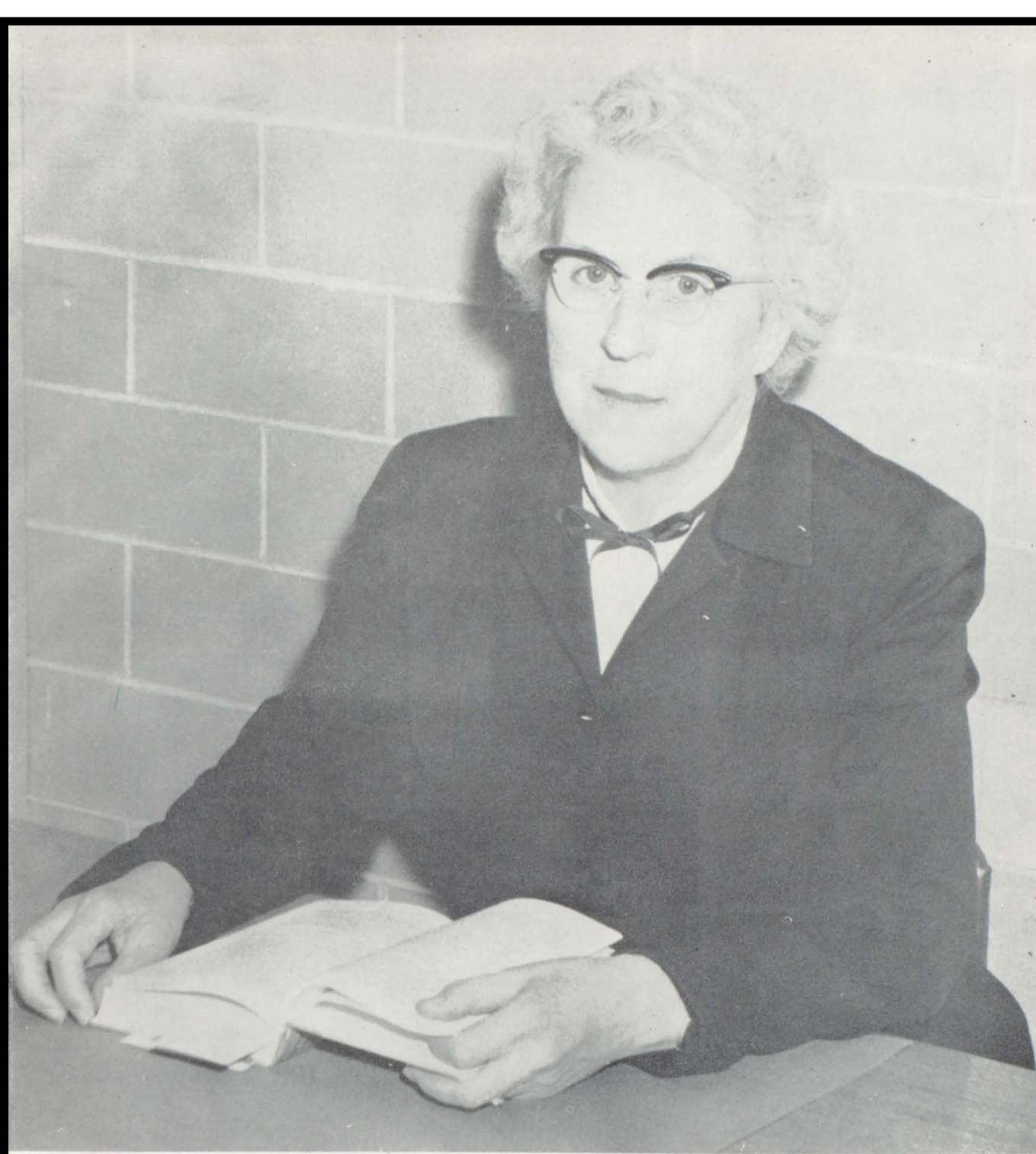
Subscriptions: Delores Houle, Betty Lou Duncan

Seniors and Faculty: Betty Vlasak, editor; Joan Julien, Marilyn Blakeslee

Sports: Jerry Carlson, editor; Kenneth Ozment, Charles Smith, Leo Holl, Dick Konobeck, Tom Zak, Art Turnquist, Ted Olson

Faculty Advisor: Paul B. Rafferty

D e d i c a t i o n



WE, THE CLASS OF '55, with great pride dedicate this book to Miss Lois Hanly. As teacher, advisor, and friend, Miss Hanly's contributions have been immeasurable. Her vast experience and unlimited wisdom has been a firm and lucid beacon to the establishment of the ideals for which Forest Lake High School stands. So to Miss Hanly, for devoting much of her time and never-ending effort, we sincerely and gratefully dedicate this annual.

*B
o
a
r
d
o
f
E
d
u
c
a
t
i
o
n*



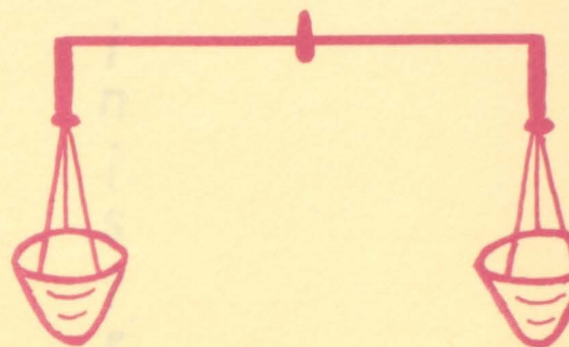
Left to right: Henning W. Engstrom, director; Joseph M. Morley, director; Henry M. Handrum, clerk; Norton Y. Taylor, president; Herbert W. Engquist, vice president; George F. Hawkinson, treasurer; J. A. Hughes, superintendent.

Left to right: Mrs. Rollin Nelson, treasurer; Mrs. Harley Case, president; Mrs. Robert Ramsdell, secretary.



*P
T
A*

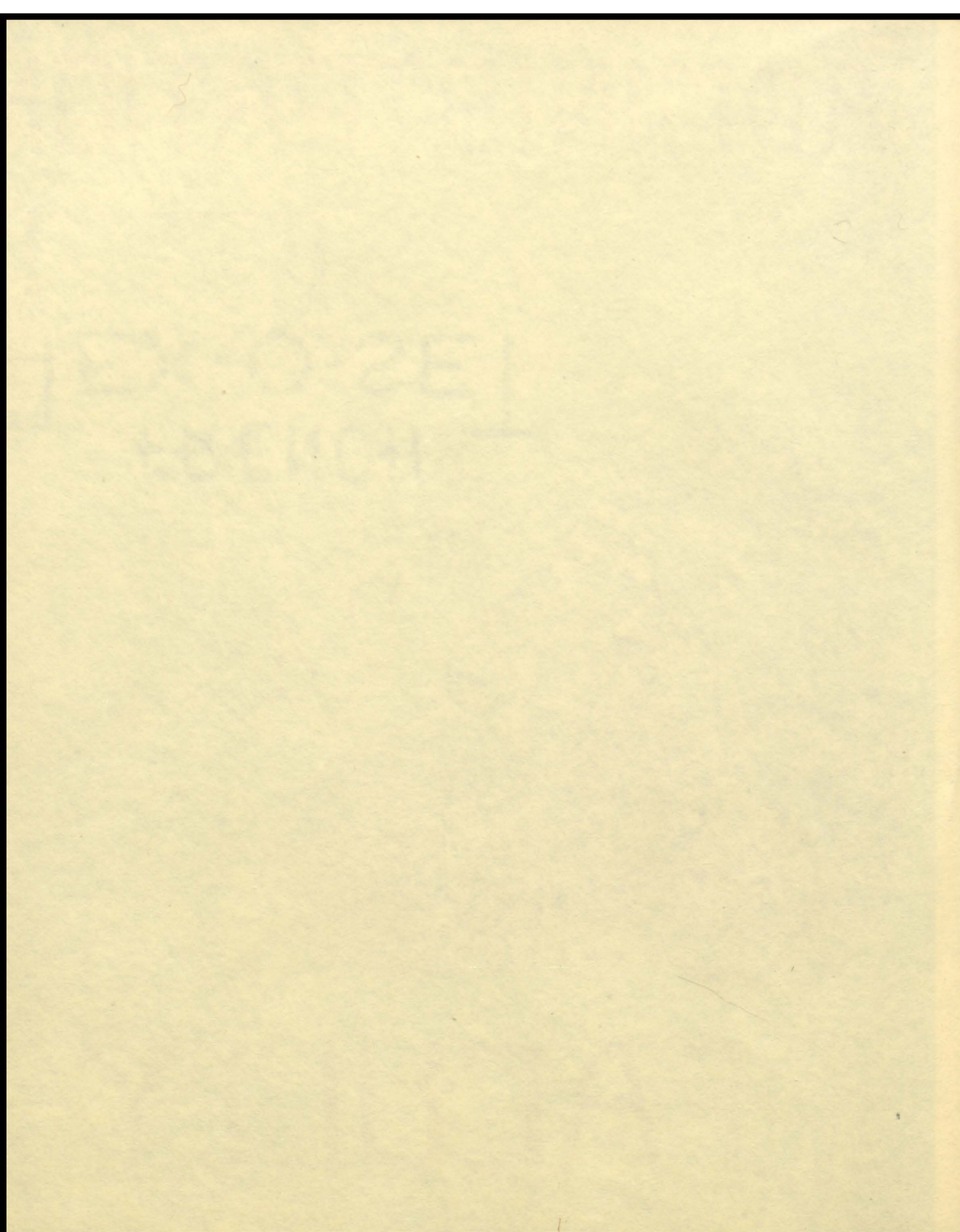
ADMINISTRATION



a
n
d



FACULTY





Superintendent; Mr. Hughes

A d m i n i s t r a t i o n

Some people have remarkable memories; some keep diaries; most of us haphazardly hang onto a few mementos—a letter or two, a newspaper clipping, some snapshots. Of course the best memento of our school days is an annual. More vivid than any memory, more comprehensive than a diary, it can serve as a depository for the more personal souvenirs which will always have a special significance for us.

I hope that this book will do more than remind you of the “dear dead days beyond recall.” Our view of the past grows mellow and sentimental as Time puts the bitter disappointments into better perspective and telescopes the eventful years to squeeze out the dreary and the monotonous which make up so much of life. Certainly there is much to be said for the older person who is warm-hearted and sympathetic, and I should hope that none of you will turn into sour and crabby adults.

Yet life demands much more of us than kind hearts and good intentions. So I hope that this book will remind you, not only of good times and pleasant associations, but also of opportunities and beginnings. As you grow older, I hope that you will become increasingly aware of the heritage that is yours because you live here, and of your obligation to pass it on to those who come after us, certainly in no wise diminished, and if possible even enriched and strengthened. You may not be called on to die for a cause, but courage and endurance, the vision of a better future, and the willingness to make sacrifices for the welfare of others surely will be required of you. These qualities made our country great and gave you a better chance than young people generally have ever had before, anywhere. May this book remind you of the obligation that is yours by virtue of your good fortune. May the confidence older people have shown in you be justified not only in personal achievement but in the contributions you make to the welfare of young people in your day.



Mr. Floyd W. Cohoes—is our helpful and understanding high school principal. His position entails speaking, listening, counseling and problem solving. He received his Bachelor of Arts degree at St. Cloud Teachers College and spent one year doing graduate work at the University of Minnesota.



Mr. Harold C. Manley—is our assistant high school principal. Mr. Manley assists the student vocational guidance and is also the Student Council Advisor. Mr. Manley holds a Bachelor of Science degree and Master of Arts degree from the University of Minnesota.



Mr. George J. Sedlacek—the elementary school principal has his office located in the new grade building. Mr. Sedlacek is found assisting the grade school youngsters with their problems. Mr. Sedlacek also runs the very complicated transportation system which serves the Forest Lake schools. He received his Bachelor of Science degree and Master of Arts degree from the University of Minnesota.

LOLA ORMEROD . . . Bachelor of Arts degree
from Washington University, St. Louis, Mis-
souri . . . English . . . History . . .

CAROLYN VOGLAND . . . Bachelor of Science
degree from University of Minnesota . . . So-
cial Studies . . . English . . .

CATHERINE SMITH . . . Bachelor of Science
degree from St. Catherine College . . . Home
Economics . . .

VIRGINIA VAN VALKENBURG . . . Bachelor
of Science from University of Minnesota . . .
Home Economics . . .

LEE SANDAGER . . . Bachelor of Science and
Master of Arts degrees from University of
Minnesota . . . FFA . . . Agriculture . . .

HAROLD PAULSON . . . Bachelor of Science
degree from University of Minnesota . . . Agri-
culture . . .





THEA CARPENTER . . . Bachelor of Arts degree from Augsburg College . . . Librarian . . .

WALLACE KENNEDY . . . Bachelor of Arts from University of Wisconsin . . . Bachelor of Science from Mankato Teachers College . . . English . . . Speech . . .

PHYLLIS PAULSON . . . Bachelor of Science degree from University of Minnesota, Duluth Branch . . . English . . .

PAUL RAFFERTY . . . Bachelor of Arts degree from St. Thomas . . . English . . . Latin . . . Journalism . . .

VICTOR HUBAL . . . Bachelor of Science degree from St. Thomas . . . English . . . Assistant Coach . . .

JOYCE KENNEDY . . . Bachelor of Arts degree from University of North Dakota . . . English . . .

EDMUND GRUND . . . Bachelor of Science degree from
University of Minnesota, Duluth Branch . . . Social Studies
. . . Economic Geography . . .

LESLIE SWAN . . . Bachelor of Science degree from Univer-
sity of Minnesota . . . Social Studies . . . World History . . .

JOHN BOBEN . . . Bachelor of Science degree from Univer-
sity of Minnesota, Duluth Branch . . . Social Studies . . .

LAWRENCE CORRIGAN . . . Bachelor of Science degree
from St. Cloud Teachers College . . . Master of Arts degree
Colorado State College of Education . . . Office Practices
. . . Typing . . . Shorthand . . .

LEO GELHAR . . . Bachelor of Science degree from St.
Cloud Teachers College . . . Bookkeeping . . . Consumer
Mathematics . . . Business Relations . . . Junior High Math

CALVIN KNUTSON . . . Bachelor of Arts from Gustavus
Adolphus . . . General Business . . . Typing . . .





LOIS HANLY . . . Bachelor of Science degree from University of Minnesota, Duluth Branch . . . World History . . . Mathematics . . . Art . . . Dean of Girls . . .

DELORES MERRILL . . . Bachelor of Science degree from the University of Minnesota . . . Math . . .

JAMES BOYD . . . Bachelor of Arts degree from Hamline University . . . Basketball and Track Coach . . . Physical Education . . . Social Studies . . .

RICHARD FUREY . . . Bachelor of Science degree from St. Thomas College . . . Football and Baseball Coach. . . Drivers Training . . . Physical Education . . .

NORMA ROWE . . . Bachelor of Science degree from University of Minnesota, Duluth Branch. . . Physical Education . . . Health . . .

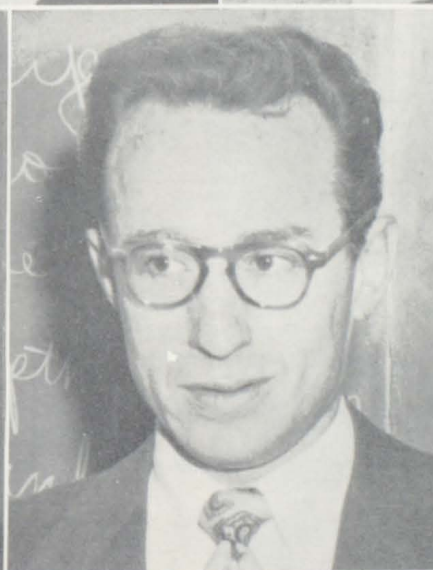
HERBERT HARPER . . . Bachelor of Science degree from
University of Minnesota . . . Biology . . . Conservation . . .

KEITH MARKUSON . . . Bachelor of Science degree from
University of Minnesota . . . General Science . . . Audio
Visual . . . Drivers Training . . . Guidance . . .

DANIEL NORTON . . . Bachelor of Science degree from
University of Minnesota . . . Physics . . . Chemistry . . .
Plane Geometry . . . Solid Geometry and Trigonometry . . .

ARTHUR MELLENTHIN . . . Bachelor of Science from Man-
kato State Teachers College . . . Master of Arts from Univer-
sity of Minnesota . . . Junior High Science . . .

GALEN CAIN . . . Bachelor of Arts and Bachelor of Science
degrees from University of Minnesota . . . Science . . . Math-
ematics . . .





RUSSELL HAMMOND . . . Bachelor of Arts degree from Mankato State Teachers College . . . Industrial Arts . . .

FORREST RAY . . . Bachelor of Science degree from Mankato State Teachers College . . . Industrial Arts . . . Drivers Training . . .

BRUCE PAINE . . . Bachelor of Science degree from University of Minnesota . . . Industrial Arts . . . Art . . .

RICHARD STOYKE . . . Bachelor of Music Education from Minneapolis College of Music . . . Music . . . Choir . . . String Instruments . . .

ROLLIN NELSON . . . Bachelor of Arts degree from University of Minnesota . . . Music . . . History . . . Band . . .



Superintendent's secretaries, left to right: May Damsgard and Muriel Alcock.

Secretaries



Grade School secretary: Jeannette Marcott.



Principal's secretary: Melba Sahlin.

Nurse

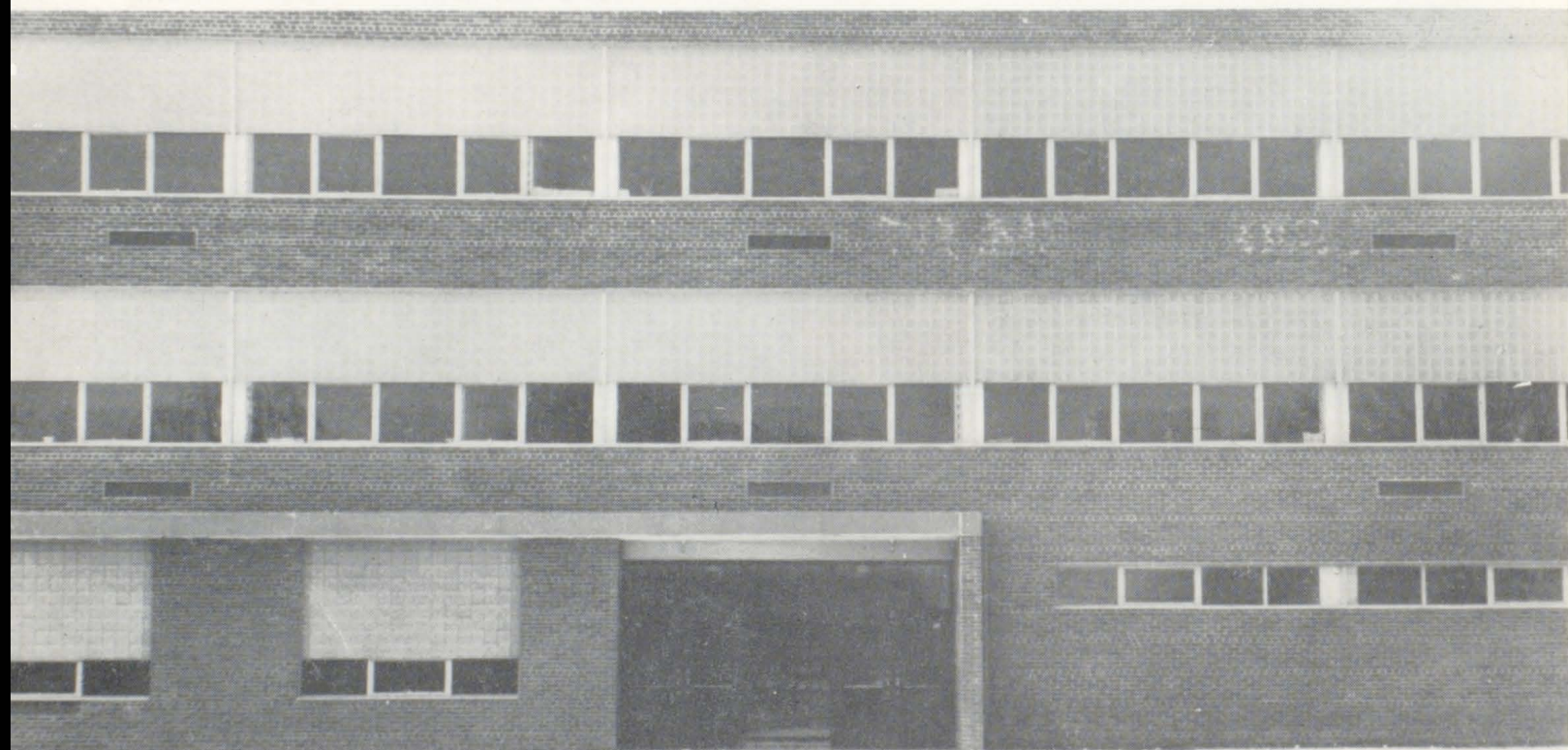
School Nurse: Donna Dielentheis.





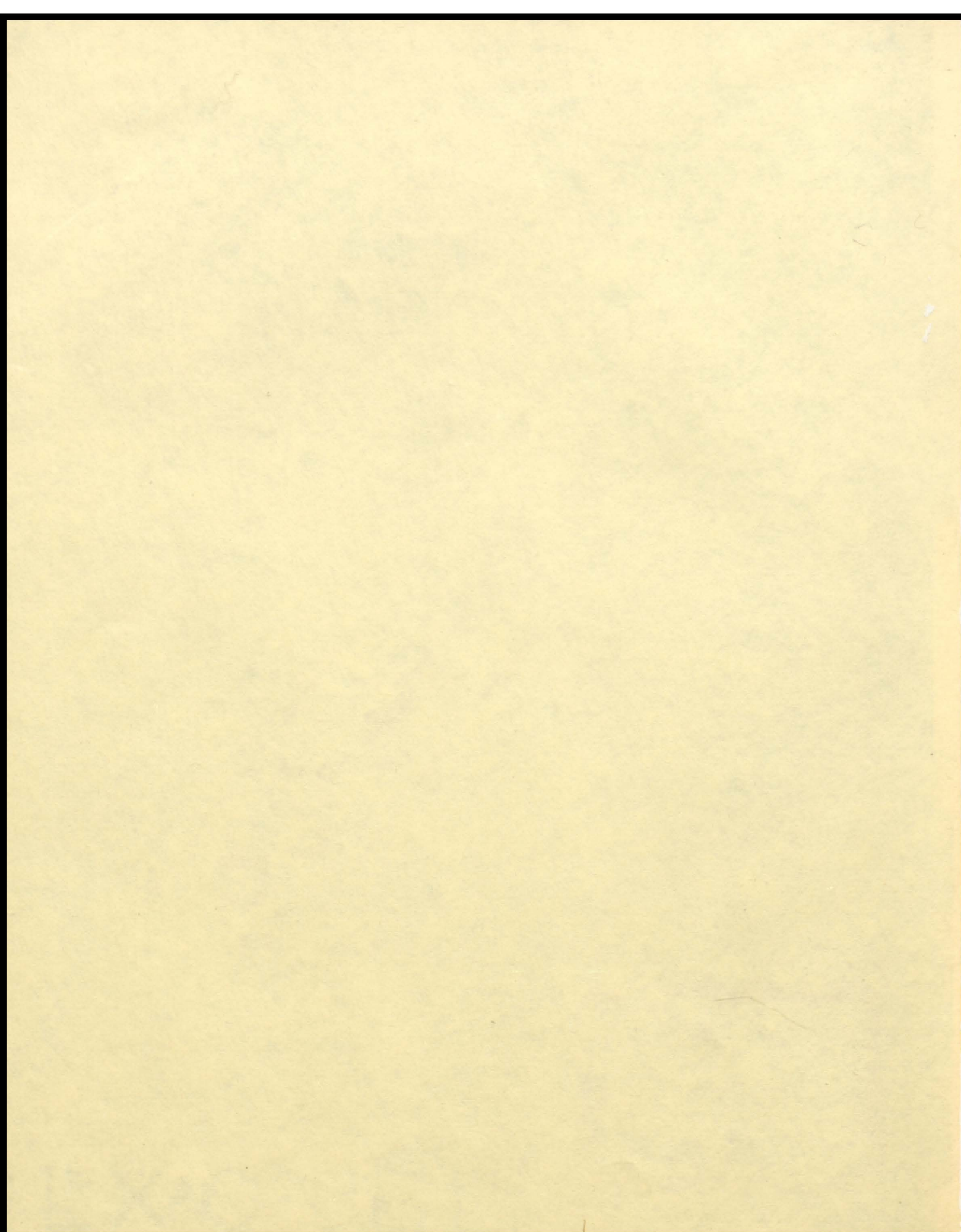
The main high school building . . .

. . . The new gym-classroom addition.



CLASSES





Class of 1955



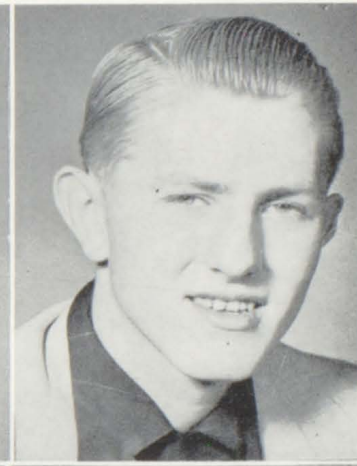
Senior Class Officers, left to right: Charles Smith, Secretary; Ken Hallberg, Vice-President; Raymond Johnson, President; John Erickson, Treasurer.

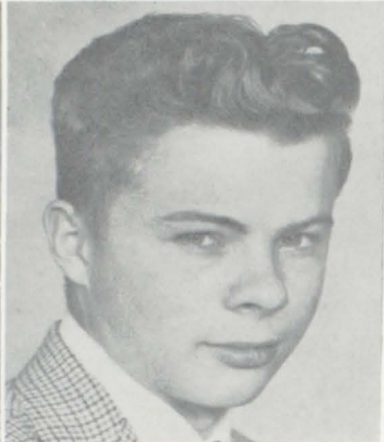
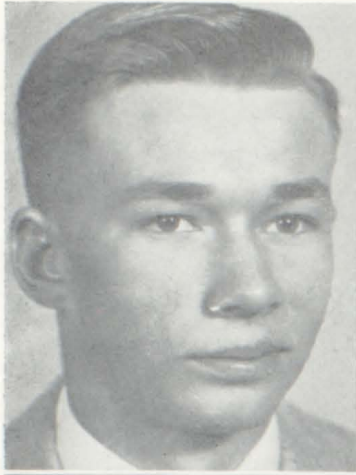
Jerry Alcock
Joyce Baker

Beatrice Anderson
James Banta

Everett Anderson
Marilyn Blakeslee

Kurt Anderson
Betty Mae Broadbent





Raymond Brown
Ai Cronk

Marillyn Cardinal
Betty Lou Duncan

Gerald Carlson
Charles Duncan

Glenna Case
Donna Dupre

Senior Class Play: Gary
Smith portraying Mr. Rock-
wood and Lu Anna West as
Mrs. Rockwood.





Senior Class Float

Eugene Elko
Wayne Erickson

Donald Elwell
Charles Fulks

Marcia Emmert
Shirley Garrison

John Erickson
Kenneth Hallberg





Joseph Hamelin
Ronald Horning

James Hermes
Delores Houle

Luella Hoekstra
Vida Hovey

Leo Holl
Kenneth Johnson

Four of the Forester Editors
at the Yearbook Clinic at
Augsburg College. Left to
right: LuAnna West, Vida
Hovey, Glenna Case, Betty
Mae Broadbent.



Three top honor students, left to right: Marcia Emmert, Salutatorian; Mr. Manley, Vida Hovey, Valedictorian; Janet Peder-son, third.



Lawrence Johnson
Clemence LaMotte



Joan Julien
Diane Landgraver

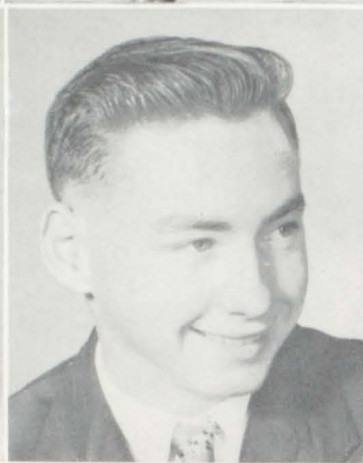
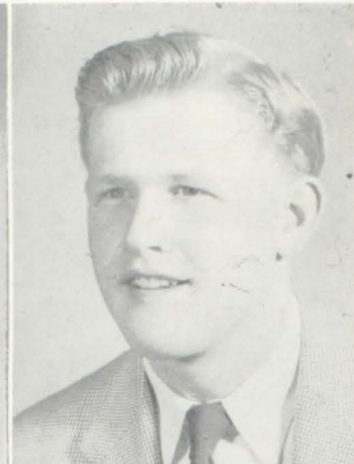


Rhoda Kinneman
John LeVesseur



Leon L'Allier
Francis Lichtscheidl





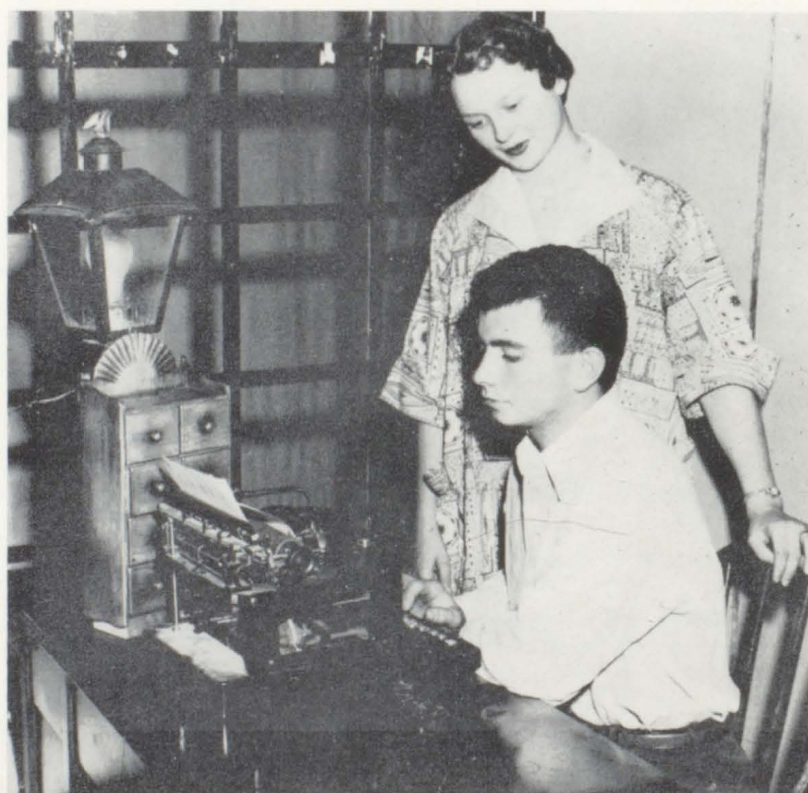
Ruth Maehren
Sonja Olsen

Jack Maslowsky
Kenneth Olson

Neil Miles
Max Olsen



Robert Mackey
Diane Nickelson
Connie Ostrom



Senior Class Play: Don Elwell as Mr. Gage, and Karen Woodrich as Mrs. Gage.



Ten top seniors. First row, left to right: Jim Banta, Connie Ostrom, Vida Hovey, Marcia Emmert, Betty Vlasak.

Second row: Gary Smith, Delores Houle, Janet Pederson, Ken Hallberg, Marilyn Blakeslee.

Kenneth Ozment
Betty Peterson



Marlene Palmer
Michael Preston



Helen Pearson
Carol Rainer



Janet Pederson
George Rasmusson





Virginia Reynolds
Elaine Schroeder

John Rieck
Flora Sexson

Glen Schleusner
JoAnn Sivigny



Wayne Rehbein
Jean Schmitt
Marlene Rehbein

Four of the FORESTER Editors: Glenna Case, LuAnna West, Betty Mae Broadbent, Vida Hovey.



Lawrence Johnson, left,
and Dave Rasmusson, cen-
ter, are looking over lit-
erature brought out by
representatives of the
armed services.



Charles Smith
Arthur Turnquist



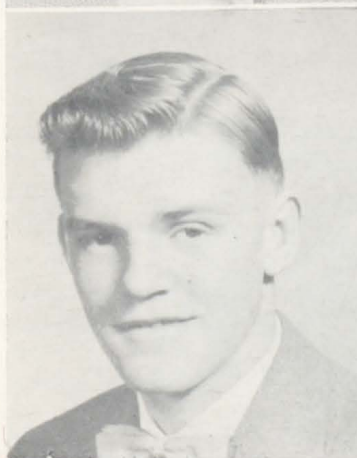
Gary Smith
Richard Tyler

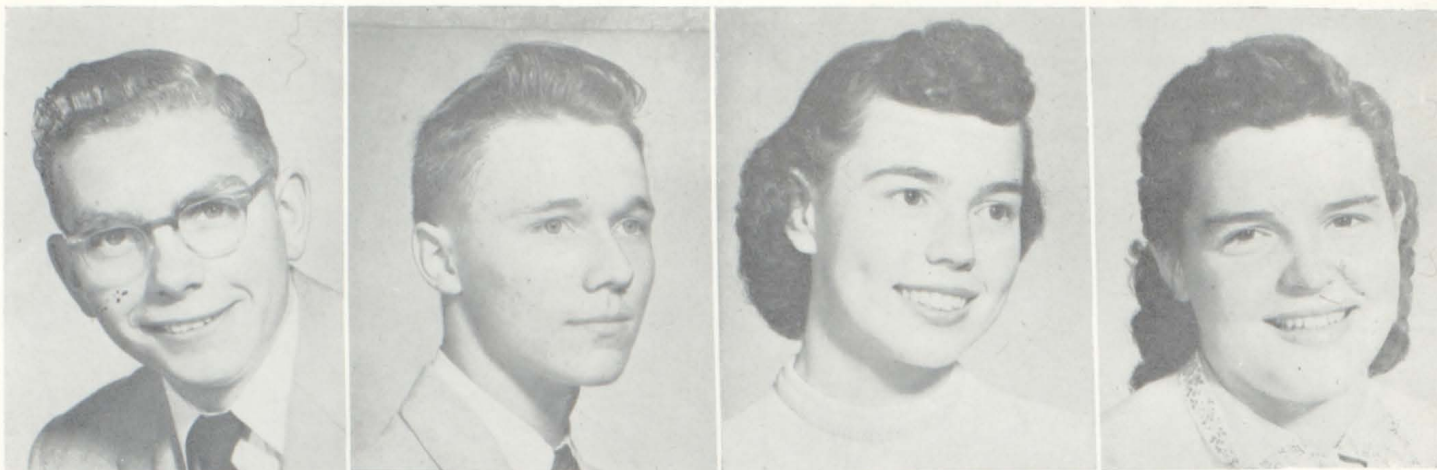


Darlene Swanson
Richard Valenty



Patricia Thurnbeck
Betty Vlasak





David Volkmann

Burton Wahlquist

LuAnna West

Mary Ann Williams

Louie Winnick

Karen Woodrich

Thomas Zak

Senior Class Rings



SENIOR DIRECTORY

Jerry Alcock . . . FFA 1, 2, 3, 4 . . . Track 1, 2, 3, 4 . . . Audio Visual 3, 4 . . . Wants to be a farmer.

Beatrice Anderson . . . Pep Club 1, 4 . . . Likes to rollerskate and dance. Is going into office work after graduation.

Everett Anderson . . . Cafeteria Help 4 . . . FFA 1, 2 . . . Hall Monitor 4 . . . Ev is going to Dunwoody and study radio.

Kurt Anderson . . . Transferred from Wilson in his senior year. Hobbies are bowling and tennis.

Joyce Baker . . . Camera Club 4 . . . Choir 2, 3, 4 . . . Class Play 3, 4 (crew) . . . FHA 2, 3, 4 . . . GAA 1, 2, 3, 4 . . . Pep Club 1, 2, 3, 4 . . . Student Typist 4.

James (Jim) Banta . . . Band 1, 2, 3, 4 . . . Bus Patrol 2, 3 . . . Cafeteria Help 1, 2, 3 . . . Class Play 3, 4 (Master Electrician) . . . BREEZE 1 . . . Student Council 1 . . . Declam 4.

Marilyn Blakeslee . . . Transferred from Du'uth East in her senior Year . . . Band 4 . . . Student Director of JANUARY THAW . . . FHA 4 . . . FORESTER 4.

Betty Mae Broadbent . . . Band 2, 3 . . . Camera Club 4 . . . JANUARY THAW . . . Crew 3 . . . FHA 2, 3 . . . FORESTER 3, 4 (Photo Editor) . . . GAA 1, 2 . . . Hall Monitor 2, 3 . . . Homecoming Princess 4 . . . Office Help 3, 4 . . . Pep Club 1, 2, 3, 4 . . . Student Council Secretary 4 . . . Thespians 4 . . . Snow Queen 4 . . . Stair Monitor 3, 4.

Raymond (Ray) Brown . . . Bus Patrol 1, 2 . . . Choir 4 . . . Class Play 3, 4 (crew) . . . FFA 1, 2, 3, 4 . . . FORESTER 4 . . . BREEZE 4.

Marilyn Cardinal . . . FHA 1 . . . Very active in 4-H . . . Likes to dance.

Gerald (Jerry) Carlson . . . Choir 2, 3, 4 . . . Class Officer 2 . . . ON BORROWED TIME & JANUARY THAW . . . FFA 1, 2, 3, 4 . . . Football 1, 2, 3, 4 . . . FORESTER 4 . . . Track 2, 3, 4 . . . Student Council 2, 3, 4 . . . Thespians 3, 4 . . . Tumbling 3, 4 . . . Letterman's Club 4 . . . Operetta 2, 3 . . . Men's Quartet 4 . . . One Act Play 4.

Glenna (Casey) Case . . . Camera Club 4 . . . Cheerleader 1, 3, 4 . . . Choir 2, 3, 4 . . . Class Officer 2, 3 . . . ON BORROWED TIME . . . Crew 4 . . . FORESTER 3, 4 (Copy editor) . . . GAA 1, 2, 3 . . . Homecoming Princess 4 . . . Majorette 1, 2, 3, 4 . . . Student Council President 4 . . . Pep Club 2, 3, 4 . . . Stair Monitor 2, 3, 4 . . . Thespians 3, 4 . . . Tumbling 3 . . . Operetta 2, 3 . . . Typist 3, 4 . . . Triple Trio 2, 3, 4.

Richard (Dick) Collen . . . FFA 1 . . . Football 1, 2, 3, 4 . . .

Ai Cronk . . . Bus Patrol 1, 2 . . . ON BORROWED TIME & JANUARY THAW . . . FFA 1, 2, 3, 4 . . . Football 3, 4 . . . Track 2, 3, 4 . . . Tumbling 3, 4 . . . Lettermen's Club 4.

Betty Lou Duncan . . . FHA 1, 2, 3 . . . Pep Club 1, 2, 3, 4 . . . Stair Monitor 3, 4 . . . Class Play Usher . . . Nurse Monitor 3 . . . FORESTER 4.

Charles (Chuck) Duncan . . . Bus Patrol 4 . . . FFA 1, 2, 3, 4 . . . Chuck would like to go to Ohio and raise goats.

Donna (Dup) Dupre . . . Bus Patrol 4 . . . FHA 1, 2, 3, 4 . . . Hall Monitor 3, 4 . . . Office Help 3, 4 . . . Pep Club 3, 4.

Eugene (Gene) Elko . . . Camera Club 4 . . . FFA 2 . . . hobbies are hunting and fishing.

Donald (Donny) Elwell . . . Band 4 . . . Choir 2, 3, 4 . . . Class Play 3, 4 . . . Student Council 1 . . . Thespians 4 . . . Operetta 3 . . . Men's Quartet 4.

Marica (Marcy) Emmert . . . Band 1, 2, 3, 4 . . . Choir 2, 3, 4 . . . ON BORROWED TIME & JANUARY THAW . . . FHA 1, 2, 3, 4 . . . FORESTER 4 . . . GAA 1, 2 . . . Hall Monitor 4 . . . Pep Club 1, 2, 3, 4 . . . Stair Monitor 2, 3, 4 . . . Student Council 2 . . . Thespians 3, 4 . . . Tumbling 3 . . . Triple Trio 2, 3, 4 . . . Operetta 2, 3 . . . Declam 4.

John (Johnny) Erickson . . . Band 2, 3, 4 . . . Treasurer of Senior Class . . . Stage Manager of JANUARY THAW . . . Thespians 4.

Wayne Erickson . . . Basketball 1, 2, 3 . . . Baseball 1, 3, 4 . . . Class Officer 2 . . . Track 3, 4 . . . Lettermen's Club 4.

Charles (Chuck) Fulks . . . Cafeteria Help 4 . . . Crew in JANUARY THAW . . . FFA 1 . . . Chuck plans to take up Chemical Engineering at the University of Minnesota.

Shirley Garrison . . . Minnetonka High first half of Jr. Year . . . Cafeteria Help 3, 4 . . . Class Play 4 (crew) . . . FHA 1, 2, 3, 4 . . . Pep Club 4 . . . Stair Monitor 4 . . . Student Typist 4 . . . Camera Club 4.

Kenneth (Ken) Hallberg . . . Band 1, 2, 3, 4 . . . Basketball 1, 2 . . . Vice-President of Senior Class . . . ON BORROWED TIME and JANUARY THAW . . . Thespians 4.

Joseph (Joe) Hamelin . . . Football 3, 4 . . . Joe's Hobby is hunting.

James (Jim) Hermes . . . Basketball 1, 2 . . . Class Play 3, 4 . . . Football 3 . . . Jim wants to be a printer following graduation.

Luella (Snookie) Hoekstra . . . Choir 3, 4 . . . ON BORROWED TIME . . . FHA 3 . . . Homecoming Princess 4 . . . Majorette 2 . . . Office Help 3, 4 . . . Pep Club 1, 2, 3, 4 . . . Thespians 3, 4 . . . Tumbling 2, 3, 4.

Leo Holl . . . Basketball 1, 2, 3, 4 . . . Class Play 3, 4 (crew) . . . Football 2, 3, 4 . . . FORESTER 4 . . . Lettermen's Club 4.

Ronald (Ronnie) Horning . . . Transferred from White Bear High in Senior Year. Hobby is cars.

Delores (DeDe) Houle . . . Bus Patrol 3, 4 . . . FHA 4 . . . Librarian 3, 4 . . . FORESTER 4 . . . Representative to Girls State.

Vida Hovey . . . Band Secretary 4 . . . ON BORROWED TIME . . . Crew 4 . . . FHA 1, 2, 3, 4 . . . FORESTER 3, 4 (Editor) . . . GAA 2, 3, 4 . . . Pep Club 2, 3, 4 . . . Thespians 3, 4.

Kenneth (Kenny) Johnson . . . Bus Patrol 2 . . . Cafeteria Help 3, 4 . . . FFA 1, 2, 3, 4 . . . Kenny plans on farming after graduation.

Lawrence (Larry) Johnson . . . Band 1, 2, 3, 4 . . . Choir 2, 3, 4 . . . FFA 1 . . . Football 2, 3, 4 . . . Track 1, 2, 3, 4 . . . Tumbling 4 . . . German Band 4 . . . Operetta 3 . . . Lettermen's Club 4.

Raymond (Ray) Johnson . . . Band 1, 2, 3, 4 . . . Basketball 1, 2, 3, 4 . . . Senior Class President . . . Class Play 3 (Crew) . . . Football 4 . . . Track 2, 3, 4 . . . Representative to Boy's State . . . Lettermen's Club 4 . . . Homecoming escort 4.

Robert (Bob) Johnson . . . Band 1, 2, 3, 4 . . . Baseball 4 . . . Basketball 2, 3 . . . Class Play 4 (Crew) . . . FFA 1, 2, 3, 4 . . . Football 1, 2, 3, 4 . . . Lettermen's Club 4.

Joan (Joanie) Julien . . . Camera Club 4 . . . Choir 2, 3, 4 . . . Class Officer 3 . . . FHA 2, 3, 4 . . . GAA 1, 2, 3, 4 . . . FORESTER 4 . . . Hall Monitor 3 . . . Pep Club 1, 2, 3, 4 . . . Stair Monitor 2 . . . Student Council 1 . . . Student Typist 4.

Rhoda Kinneman . . . Cafeteria Help 2, 3, 4 . . . Camera Club 4 . . . Class Play 3 (crew) . . . FHA 1, 2, 4 . . . FORESTER 4 . . . Hall Monitor 4 . . . Librarian 3 . . . Pep Club 1, 2, 3, 4 . . . Operetta Crew 3 . . . Student typist 4.

Richard (Dick) Konobeck . . . Transferred from Harding in Junior Year . . . Football 3, 4 . . . FORESTER 4 . . . Homecoming Escort 4 . . . Class Play 4 (crew) . . . Lettermen's Club 4.

Leon L'Allier . . . Hobby is cars . . . Plans to practice body and fender trade.

Clemence (Clem) LaMotte . . . Class Play 3 (crew) . . . FHA 1, 2, 3, 4 . . . Hall Monitor 3, 4 . . . Librarian 3 . . . Office Help 3.

Diane Landgraver . . . FHA 1 . . . Hobbies are rollerskating and dancing.

Francis Lichtscheidl . . . Cafeteria Help 4 . . . FFA 1, 2, 3, 4 . . . Plans on going into the service after graduation.

Robert (Bob) Mackey . . . Bus Patrol 1, 2 . . . Audio Visual 3, 4 . . . Hobbies are radios and cars . . . Wants to take up electronics.

Ruth Maehren . . . Camera Club 4 . . . FHA 1, 2, 3, 4 . . . FORESTER 4 . . . Hall Monitor 4 . . . Librarian 4 . . . Pep Club 4 . . . Student Typist.

Jack Maslowsky . . . Audio Visual 2, 3, 4 . . . Baseball 3 . . . Class Officer 1 . . . Track 2 . . . Hall Monitor 3 . . . Student Manager 1.

Neil Miles . . . ON BORROWED TIME & JANUARY THAW . . . FFA 1, 2, 3, 4 . . . Thespians 4 . . . Tumbling 3, 4 . . . Football 1, 2, 3, 4 . . . Lettermen's Club 4.

Diane Nickelson . . . GAA 1, 2, 3, 4 . . . Pep Club 1, 2, 3, 4 . . . Hall Monitor 2, 4 . . . FHA 3, 4 . . . Class Play 3, 4 (crew) . . . Librarian 3 . . . Choir 4 . . . Camera Club 4 . . . BREEZE 3 . . . Stair Monitor 4 . . . Student Council 2 . . . Thespians 4.

Max Olsen . . . Audio Visual 3 . . . Plans to attend trade school after graduation.

Sonja Olsen . . . Cafeteria Help 2, 3, 4 . . . Camera Club 4 . . . Class Play 4 (crew) . . . FHA 1, 2, 3, 4 . . . Pep Club 1, 2, 3, 4 . . . Stair Monitor 3.

Kenneth (Kenny) Olson . . . Bus Patrol 3 . . . FFA 1 . . . Plans on going into the army.

Connie Ostrom . . . Cheerleader 1, 2, 3, 4 . . . Choir 2, 3, 4 . . . Class Play 3, 4 . . . Declam 3, 4 . . . FHA 1 . . . FORESTER 3 . . . GAA 1, 2 . . . Hall Monitor 2, 4 . . . Homecoming Princess 4 . . . Majorette 1, 2, 3, 4 . . . Operetta 2, 3 . . . Pep Club 1, 2, 3, 4 . . . BREEZE 3, 4 (editor) Thespians 3, 4.

Kenneth (Kenny) Ozment . . . Baseball 4 . . . Bus Patrol 1, 2, 3, 4 . . . Cafeteria Help 3, 4 . . . Camera Club 4 . . . Choir 4 . . . ON BORROWED TIME . . . Declam 4 . . . FFA 1, 2, 3, 4 . . . Football 1, 2, 4 . . . FORESTER 4 . . . Hall Monitor 2, 4 . . . BREEZE 3, 4 . . . Track 4 . . . Lettermen's Club 4.

Marlene (Mar) Palmer . . . Choir 4 . . . Cheerleader 3 . . . Camera Club 4 . . . ON BORROWED TIME . . . Declam 3, 4 . . . FORESTER 3 . . . Pep Club 2, 3, 4 . . . GAA 2, 3 . . . Majorette 1, 2, 3, 4 . . . Office Help 3, 4 . . . Student Council 3 . . . Thespians 3, 4 . . . One Act Play 4.

Helen Pearson . . . FHA 1, 2 . . . Hall Monitor 1, 4 . . . Librarian 1 . . . Pep Club 1, 4.

Janet (Jan) Pederson . . . Band 1, 2, 3, 4 . . . Choir Secretary 2, 3, 4 . . . ON BORROWED TIME & JANUARY THAW . . . FHA 2, 3, 4 . . . FORESTER 3, 4 (Business Editor) . . . GAA 1, 2 . . . Pep Club 1, 2, 3, 4 . . . Stair Monitor 2, 3, 4 . . . Thespians 4 . . . Ag Secretary 4 . . . Student Typist 3 . . . Operetta Usher . . . Student Council 2.

Betty Peterson . . . Transferred from Indianola, Nebraska, in Junior Year . . . Usher 3, 4 . . . FHA 3, 4 . . . Hall Monitor 4 . . . Pep Club 3, 4.

Michael (Mickey) Preston . . . FFA 1, 2 . . . Football 2, 3, 4 . . . All-Conference Football 4 . . . Mickey's hobby is watching auto races.

Richard (Dick) Proulx . . . Bus Patrol 1, 2 . . . Cafeteria Help 1, 2 . . . FFA 1, 2, 3, 4 . . . Hall Monitor 4 . . . BREEZE 1 . . . Audio Visual 4.

Carol Rainer . . . FHA 1, 2, 3, 4 . . . GAA 1, 2 . . . Hall Monitor 4 . . . Pep Club 1, 2, 3, 4.

Peter (Pete) Ramsdell . . . Transferred from Rochester in Sophomore Year . . . Band 2, 3, 4 . . . Basketball 2 . . . ON BORROWED TIME & JANUARY THAW . . . Thespians 3, 4.

George (Dave) Rasmusson . . . Bus Patrol 4 . . . Dave plans on going to a drafting school.

Marlene (Mar) Rehbein . . . Transferred from Mahtomedi in Sophomore year . . . Hall Monitor 3, 4 . . . Office Help 3 . . . Pep Club 4 . . . Nurse Monitor 3.

Wayne Rehbein . . . This fellow hails from Lino and spends most of his time working on his car.

Virginia (Ginny) Reynolds . . . Transferred from Central in Sophomore Year . . . Class Play 3, 4 (crew) . . . FHA 2, 3, 4 . . . Pep Club 2, 3, 4 . . . Stair Monitor 3, 4 . . . Tumbling 3, 4.

John (Jack) Rieck . . . Class Play 4 (crew) . . . FFA 2, 3, 4 . . . After graduation Jack plans on going into the army.

Glen Schleusner . . . Transferred from Stillwater in Senior Year . . . FFA 4 . . . Glen wants to be a farmer.

Jean (Jeanie) Schmitt . . . Cafeteria Help 4 . . . Class Play 4 (crew) . . . Librarian 3 . . . BREEZE 1, 2 . . . Tumbling 3, 4.

Elaine (Laine) Schroeder . . . Camera Club 4 . . . Class Play 3, 4 (crew) . . . FHA 1, 2, 3, 4 . . . GAA 1, 2, 3, 4 . . . Librarian 3, 4 . . . Pep Club 1, 2, 3, 4.

Flora Sexson . . . Cafeteria Help 2, 3, 4 . . . FHA 1 . . . Librarian 4 . . . Stair Monitor 3 . . . BREEZE 2, 3, 4.

JoAnn Sivigny . . . FHA 1 . . . Pep Club 4 . . . Hobby is riding horses.

Charles (Charlie) Smith . . . Basketball 3, 4 . . . Class Play 3 (cast) 4 (crew) . . . FFA 1, 2 . . . Football 2, 3, 4 . . . FORESTER 4 . . . Track 3, 4 . . . Secretary of Senior Class . . . Homecoming Escort 4.

Gary Smith . . . Band 1, 2, 3, 4 . . . Baseball 3 . . . Class Officer 1 . . . JANUARY THAW . . . Student Council 1 . . . Thespians 4 German Band 4.

Darlene (Dolly) Swanson . . . FHA 1, 2 . . . GAA 1, 2, 3 . . . Pep Club 2, 3 . . . Dolly likes to drive the car and dance.

Patricia (Pat) Thurnbeck . . . Camera Club 4 . . . Choir 2, 3, 4 . . . FHA 1, 2, 3, 4 . . . GAA 1, 2, 3, 4 . . . Tumbling 3, 4 . . . Operetta 2, 3 . . . Pep Club 1, 2, 3, 4 . . . Usher 3, 4.

Arthur (Art) Turnquist . . . Transferred from San Antonio, Texas in Sophomore Year . . . Baseball 3, 4 . . . Basketball 2 . . . Class Play 3, 4 (crew) . . . Football 2, 3, 4 . . . FORESTER 4 . . . Homecoming Escort 4 . . . Student Council 2, 4 . . . Thespians 3, 4 . . . Lettermen's Club 4.

Richard (Dick) Tyler . . . Band 2, 3, 4 . . . Bus Patrol 3, 4 . . . Cheerleader 3, 4 . . . FFA 1, 2, 3, 4 . . . Pep Club 3, 4 . . . BREEZE 3.

Richard (Dick) Valenty . . . Choir 2, 3, 4 . . . Operetta 3 . . . Dick is going into the Navy after graduation. Archery is his hobby.

Evon (Vonnice) Van Elsberg . . . Transferred from White Bear in Junior Year . . . Crew 4 . . . GAA 3 . . . Homecoming Queen . . . Pep Club 3.

Betty Vlasak . . . Camera Club 4 . . . Class Play 3, 4 (crew) . . . FHA 1, 2, 3, 4 . . . Hall Monitor 2 . . . Librarian 3, 4 . . . Office Help 3, 4 . . . Pep Club 1, 2, 3, 4 . . . Stair Monitor 4 . . . Thespians 4 . . . FORESTER 4.

David (Dave) Volkmann . . . Audio Visual 3, 4 . . . Hall Monitor 2 . . . Plans to go to Dunwoody Trade School for a course in Tool and Die.

Burton (Burt) Wahlquist . . . Band 1, 2, 3 . . . Bus Patrol 3, 4 . . . Choir 2, 3, 4 . . . JANUARY THAW . . . Hall Monitor 3 . . . Men's Quartet 3, 4 . . . Men's Glee Club 2, 3, 4 . . . Operetta 2.

LuAnna (Westie) West . . . Camera Club 4 . . . Choir 2, 3, 4 . . . Class Play 3 (crew) JANUARY THAW . . . FHA 1 . . . FORESTER 3, 4 (Art Editor) . . . GAA 1, 2, 3, 4 . . . Hall Monitor 4 . . . Pep Club 3, 4 . . . BREEZE 1 . . . Stair Monitor 2, 3, 4 . . . Student Council 3 . . . Thespians 4 . . . Triple Trio 4 . . . Women's Chorus 3 . . . Operetta 3.

Mary Ann Williams . . . Transferred from St. Cyril in her Sophomore Year . . . Camera Club 4 . . . Declam 3, 4 . . . Hall Monitor 4 . . . Librarian 3.

Louie Winnick . . . Louie has gone to Forest Lake School for twelve years . . . Hobbies are hunting and fishing.

Karen Woodrich . . . Transferred from Central in Junior Year . . . JANUARY THAW . . . Thespians 4 . . . Tumbling 4 . . . Declam 4.

Thomas (Tommy) Zak . . . Basketball 1, 2, 3, 4 . . . Class Officer 1 . . . Football 3, 4 . . . Lettermen's Club 4.

SENIOR DIRECTORY

F o r e i g n

E x c h a n g e

S t u d e n t s



Four teenagers from other lands visited our school one weekend this winter. Eva Petrides from Greece, Vittorio de Stephano from Italy, John Rejjpens from Belgium, and Elfi Sander from Germany shared a day with us at school under the sponsorship of the Student Council. They attended classes, took part in a pepfest and basketball game as spectators, and even drove the driver training car. The girls experienced their first sleigh ride that weekend also. All in all, it was a wonderful experience for everyone concerned.

J u n i o r s



First row, left to right: Janice Dahlberg, Audrey Fingal, Judy Arundel, Marlys Nordin, Karen Anderson.
 Second row: Harlin Lawrence, Bill Jones, Beverly Lunde, Lora Lee Simmons, Gene Hauer.
 Third row: Lyle Willette, Ivars Kauls, Bill Hengens, David Baumann, Allan Robinson, Gerald Carlson.
 Fourth row: Bernard LaCoursiere, Lee Perrault, James Witham, Clyde Swanson, Bill Boudreau, Edward Hulsman.



First row, left to right: LeRoy Houle, Tom Heisler, Beth Crawford, Ruth Peterson, Kay Kelling, Bernette Erickson, Norma Fanando, Emil Gillert.
 Second row: DuWayne Kasma, Wayne Nickelson, Joan Moorhouse, Margie Harstad, James Stuard, Geraldine Sandstrom, Jerry Pepin, Lowell Benson.
 Third row: Jerome Grundhofer, Jerry Brine, Glen Rehbein, Marlin Thompson, Milton Lindgren, Duane Erickson, Lyle Anderson, Louis Koch, Martin Johnson.



First row, left to right: Mary Kahlstorf, Leila Anderson, Rosemary O'Gara, Jim Parenteau, Ronald Gamache, Ronald Bowman.
 Second row: June Ryals, Jeanette Erickson, Lois Balfanz, Janet Hughes, Patsy McKittrick, Marlene Collen, LaNora Whitman.
 Third row: Roger Kinneman, Vinton Lewis, Jerry Jovanovich, Duane Zwolensky, Alfred Radtke.
 Fourth row: Joseph Mullaly, Dennis Larson, Wallace Hillman, Glenn Ekvall, Bruce Johnson, Roger Hawkinson.

S o p h o m o r e s



First row, left to right: Jacque Renard, Karen Dickey, Dee Forsberg, Karen Jensen, Dorothy Rehbein, Larry Deskins.
 Second row: Burdell Hodges, Janice Hoglund, Roy Johnson, Joyce Belland, Janice Sullivan, Gerald Dupre, Bernice Maehren.
 Third row: Byron Anderson, Robert Morehead, John Skoglund, Richard Sullwold, Joe Gamache, Donna Grubbs, Barbara LaKamp.
 Fourth row: Ernest Barrett, Don Domine, Darryl Sawyer, Gary Olson, Roger Bodine, Richard Shogren, Dale Long.



First row, left to right: Robert Nelson, Richard Bourke, John Bourke, Geraldine Johnson, Pat Flanagan, Ardyce Dahler, Julianne Bowman.
 Second row: Richard Lynch, David Hermes, Eudene Hovey, Joyce Rimer, Anne Goiffon, Barbara Weckerly.
 Third row: Norman Laschinger, David Benoy, Ray Radtke, Kenneth Albrecht, Ronald Anderson.
 Fourth row: Roger Erickson, Marcel Lutz, Cecil Rogers, Jim Johnson, James Palmer.



First row, left to right: Ted Willette, Joe Trepanier, Richard Quigley, Joe Delia, Claudia Merfeld, Janice Lange, Joyce Haselbauer, June Nelson.
 Second row: Jack Mortensen, Dean Weiss, Harold Vigeant, Gene Palmer, Bob Barry, Corinne Palmer, Phillis Edstrom, Jean Anderson, Darlene Johnson.
 Third row: Bruce Rioux, Gene Cournoyer, Bob Anderson, Beverly Anderson, Donna Warner, Darlene Reiter, Patsy Gamble, Agnes Kinneman.
 Fourth row: Glenn Larson, Forrest Sexson, John Lunde, Bob Duraine, Gary Houle, Jim Helgeson, Richard Shogren.

F r e s h m e n



First row, left to right: Martin Moore, Donald Duraine, Donald Husnik, Myron Lingren, Galin Dahlberg.
Second row: Norman Perreault, Mark Swenson, Harold Carr, Kenneth Waha, Robert Quist.
Third row: William Lind, Roger Buske, Gordon Schmuck, Richard Klinefelter, Lowell Palmer.
Fourth row: David Rignell, Tom Anderson, Tom Hollihan, Bob Cronk, Richard Anderson, Jerry Jensen.



First row, left to right: Gene Berglund, Dean Miller, Joseph Miron, Evelyn Olson, Phyllis Merfeld, Kathy Hursh, Ronald Weiss, James Nickelson.
Second row: Myrtle Lindgren, David Koch, Shirley Odermatt, Laurel Matheson, Lorraine Iverson, Janet McGrath, David LeVesseur, Mary Johnson.
Third row: LeRoy Howard, Willis Cropsey, Barbara Lunde, Inez Morehead, June Onsager, Edith Hyde, James Emerson.
Fourth row: Gerald Bathurst, Patrick Cook, Gene Case, David Mattson, David Benson, Jerome Rosengren.



First row, left to right: James Swenson, Donald Worth, Ronald Wyman, Delores Sexson, Eileen Ott, Kathleen Spescha, Barbara Westlund.

Second row: Leon Schmidt, Bert Evgen, Patricia Johnson, Lois Pedersen, Beverly Tyler, Geraldine Rioux, Vienna Kahlstorf, Betty Klein.

Third row: Howard Heuckendorf, Allen Simmons, Gerald Houle, Sandra Federsen, Diane Thurnbeck, Romelle Johnson, Dianne Johnson.

Fourth row: Thomas Spry, James Stanek, Edward Frandle, Gerald Solem, James Trudeau, Kenneth Skoglund, Gary Wettschreck, Norman Grubbs, Waldemar Hanke.



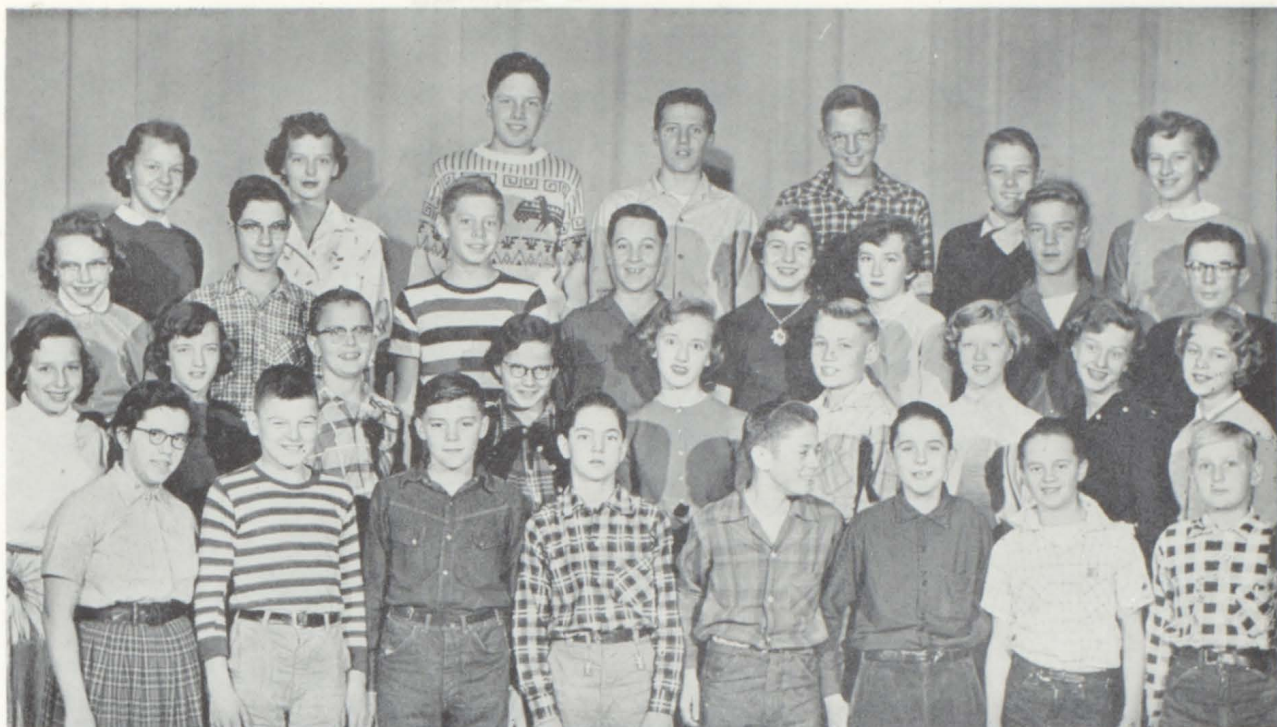
First row, left to right: Geraldine Genz, Rosalee Gamache, Virginia Doree, Shirley Entner, Joyce Duncan.

Second row: Therese Willette, Helen Arundel, Carolyne Erickson, Verna Allison, Shelby Carlson, Beverly Gluck.

Third row: Theresa Hauer, Susan Corwin, Karen Barrett, Joleen Cowle, Mary Gregoire, Marilee Cohoes.

Fourth row: Yvonne Bergeron, Dorothy Baker, Arline Grubbs, Suzanne Bloom, Rae Lou Gamelin.

E i g h t h



First row, left to right: Betty Lou Crete, Richard Carlson, Eddy Bakeberg, James Dagastino, Donald Banta, Donald Cook, Bryan Alshouse, Raleigh Carr.

Second row: Caroline Doree, Gloria Bowman, Keith Anderson, Betty Frischmon, Dawna Shosten, Dennis Brown, Renee Fingal, Jeannette Ekblad, Mary Jo Drummond.

Third row: Jeanne Behrens, William Cournoyer, Garnet Bergerson, Delmar Branum, JoAnn Cropsey, Flora Hulsman, Daniel Carlson, John Anderson.

Fourth row: Janet Erickson, Patricia Domine, Robert Jasinski, Thomas Weber, Arthur Berglund, Joseph Brown, Barbara Fingal.



First row, left to right: Dennis Lange, John Olsen, Donald Reese, Kenneth Renard, David McGovern, Catherine Olsen, Beverly Shippy.

Second row: Don Mortensen, Darlene Pearson, Gregory Pepin, Richard Levine, Arvid Macziewski, Paulette Marier, Yvonne Proulx, Connie Frandle.

Third row: John Palmer, Dean Peterson, June Sadowski, Patricia Schatz, Alan Olson, Donald Palmer, Carole Owens, Delores Olson, Beverly Ciesielski.

Fourth row: Zigurds Kauls, Edward Locke, Hermann Kauls, Raymond Young, John Steiro, Ruth Preiner, Judy Reiter, Marlys Marier, Beverly Palmer.



First row, left to right: Donald Zak, Lloyd West, Allen Van Elsberg, Larry Swap, Marilyn Winick, Jean Stanek, Richard Swenson.
Second row: Richard Stark, Robert Rogers, Luke Riopel, Richard Rudin, Danny Thompson, Joyce Stringer, Evalina Turnquist, Nancy Webb.

Third row: Robert Witham, Gary Weckerly, Carol Vigeant, Mavis Steltzner, Sandra Solomon, Joyce Winick, Darlene Swanson, Stephen Vogel.

Fourth row: Clyde Rehbein, Eugene Sternberg, Stephen Stockdill, Michael Schroeder, Donald Wahlberg, Joan Stanek, Lois Taylor, Joan Worth, Loretta Urman, Ernest Strandberg.



First row, left to right: Carol Kunshier, Carol Helgeson, Robert Ede, George Davison, Ray Jones, James Willette, Pat Hamelin, Jerry Haselbauer.

Second row: Jane Maehren, Ethel Birdsall, John Dagastino, Jerry Gardner, Gordon Garrison, Carl Dahlberg, Kenneth Damsgard, Hugh Hehner.

Third row: Carol Krois, Kay Fuglie, Margaret Hollihan, Judy Holtzbauer, Richard Johnson, Donald Ekblad, Dan Jensen, Richard Javonovich.

Fourth row: Mary Hollihan, Karen Krueger, Jeanette Lunde, Janet Gamble, Gerald Kari, Gary Rosenberg, Arnold Johnson, Pat Delmedico, David Kammerer.

S e v e n t h



First row, left to right: Tom Parenteau, Ronald Mandt, Nicole Ott, Mary Ramsdell, Sharon Peterson, Ruth Palmer.
 Second row: Richard Muller, James Istvanovich, Gary Nelson, James Dupre, Steven Lindberg, Nancy Petersen.
 Third row: Bill Morehead, Jack Lightfoot, Robert Lindgren, Alfred Miron, Franklin Nordin, Joy Ramsden, Marlys Proulx.
 Fourth row: Walter Marier, Ken LeVesseur, Kay Monson, Gail Anderson, Patricia Peterson, Mary Oberg.



First row, left to right: William Davison, Henry Gregoire, Joe Heim, Sandra Cote, Karen Gamache, Karen Berglund, Judy Williams, Diane Cedergren.
 Second row: Allen Gunderson, John Duncan, Dean Haynes, Roger Dupre, Shirley Genz, Henrietta Gregoire.
 Third row: David Crawford, Edward Dupre, Wanda Donovan, Carol Ekblad, Sharon DeLong, Mona Duraine, Gloria Grubbs.
 Fourth row: Donald Dow, John Erickson, Leon Erickson, Robert Moorhouse, Darlene Carlson, Joy Jasinski, Dennis Gustafson.

S E V E N T H



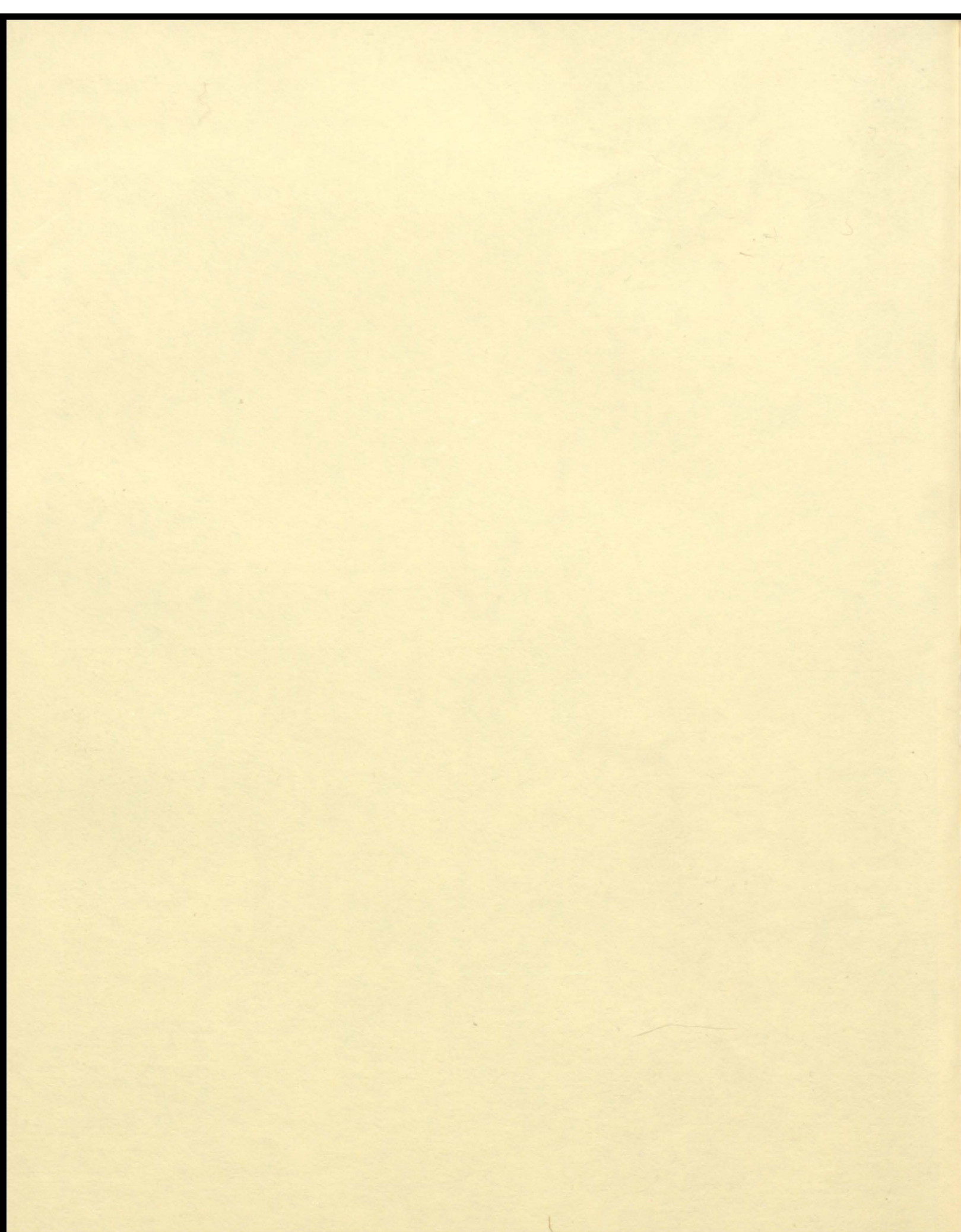
First row, left to right: Robert Shoberg, Betty Waha, Karen Strandberg, Sherrol Swanson, Donald Quigley.
 Second row: Jerry Thurnbeck, Renee Wyman, Stanley Sullwold, Russell Whittman, Robert Schlaeger, Barbara Strecker.
 Third row: Diane Warner, Karen Stokes, Kathy Sullivan, Mike Trepanier, Clyde Swenson, Margie Schmitt.
 Fourth row: Douglas Rignell, David Stankeiviez, Ronald True, Carol Sandstrom, Karen Reiter, Karen Deskins.



First row, left to right: Leon Muellner, John Houle, John Laurie, Warren Kunshier, Richard Kunshier, Dorothy Johnson.
 Second row: James Houle, Daniel LaCoursiere, Marie Levine, Judith LaBelle, Dean Larson, Juris Kauls.
 Third row: Allen Klinefelter, David Larson, Janice Grundhofer, Sharon Pearson, Linda Jensen, Kenneth Johnson, Douglas Johnson.
 Fourth row: Joyce Gulasch, Judith Gulasch, Liliane Kauls, Linda Johnson, Mary Hapka, Karen Marcott, Paul Johnson.

ACTIVITIES







First row, left to right: Robert Bodine, Tom Corbett, James Cournoyer, Paul Anderson, Lloyd Bergstrom, Judy Alcock, Ruth Anderson. Second row: David Bradford, Heather Boese, Roberta Anderson, Charlotte Arundel, Carolyn Booren, Clifford Berggren, Sharon Behm. Third row: Gerald Anderson, Judy Brine, Carol Anderson, Carolyn Banta, Paula Brust, Kenny Anderson, Duane Boyer. Fourth row: Allen Broadbent, Michael Casey, James Beattie, Judy Behrens, Sharon Bloom, David Franzen, Gerald Corwin, Patricia Anderson.

Choir Room



Front row, left to right: Barbara Webb, Janet Massicotte, Mary Jane Elko, Mary Ekblad, Kathleen DeNio, Janet Wahlquist, Virginia Woodrich. Second row: Nancy Carlson, Gloria Wenzel, Karen Bengston, Vivian Nelson, Bonnie Nygren, Mary Kuno, Jeannette Lightfoot. Third row: Joan Gamelin, Jean Tizard, Darlene Oothoudt, Charlene Tolzmann, Geraldine Scutter, Chester Hapka, Donald Hapka, Richard Cox, David Klinefelter, Jarry Muller, Ralph Elliot, Jerry Marier, Billy Volkmann, Dick Palmer, Rodney Tuttle, Dick Carlson.

B a n d R o o m



First row, left to right: Gary Moen, Neil Banta, Janice Sahlin, Dede Handrum, Betty Ciesielski, Marilyn Matheson, Joan Emmert, Janice Johnson, Mardi Van Elsberg, Edward Sedlacek.

Second row: Paul Parenteau, Kathleen Gibbs, Nancy Nygren, Eunice Lundquist, Judith Houle, Maureen Morley, Gayle Stokes, Beverly Sahlin, Sharon Anderson, Cynthia Crohn.

Third row: David Schatz, Sharon Johnson, Donald Johnson, Diane Olson, Ricky Pepin, Ronald Dupre, David Stark.

Fourth row: Francis Schlaeger, John Ede, John Smith, Bruce Swenson, Richard Moorhouse, Joan Schatz, Jean Hawkinson, Ted Olson, Thomas Lynch.

Saxophone sectional, first row, left to right: Ken Hallberg, Bev Sahlin, Charlene Tolzmann.

Second row: Janet Pederson, Marcia Emmert, Eunice Lundquist.





First row left to right: Lois Balfanz, Alice Alecock, Flora Sexson, Betty Ciesielski, Cynthia Crohn, Rosemary O'Gara, Ted Olson.

Second row: Jeannette Lightfoot, Sharon Anderson, Connie Ostrom, Nancy Webb, June Ryals, Kittee Berfelz, Darlene Hoffman.

Third row: Dorothy Baker, Ray Brown, Lois Sovereign, Kenny Ozment, Chester Hapka, Darlene Johnson, Barbara LaKamp.

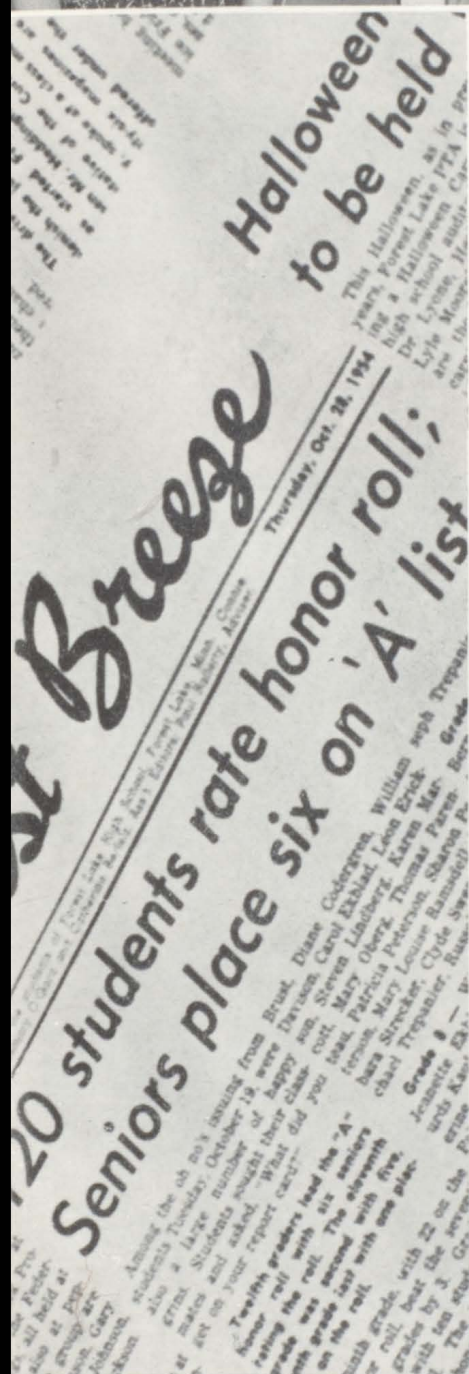
FLHS is indeed proud of its school paper the BREEZE.

Editor, Connie Ostrom and co-editors Kittee Berfelz and Rosemary O'Gara with a very able staff have aimed all year to print the news the students would be anxious to read. Monday and Friday nights have been designated as "work nights." With the very capable BREEZE advisor, Mr. Paul Rafferty, close at hand to answer the many baffling questions which come up.

Rustling Leaves is one of the outstanding features in the paper. Lois Sovereign, a FLHS junior writes this column for every issue and in it includes many short "newsy" articles.

Any students in grades 7-12 are eligible for BREEZE staff membership.

For the first time in FLHS a journalism class has been offered to any journalistic enthusiast. A greater understanding of how the BREEZE is put together is taught along with how important a school paper is.



Left to right: Connie Ostrom, Lois Sovereign, Kittee Berfelz, Rosemary O'Gara.



Choir

If you've heard some close harmony coming from the music room, chances are it was the triple trio. They have sung at open house, P.T.A. and Ladies Aid. They entered the district music contest and then journeyed to the state contest in Minneapolis last year, where they received an A rating.

Forest Lake High School has always been known to have a traditionally outstanding choir and this year was no exception. The director's podium was occupied this year by Mr. Richard Stoyke who did a most efficient and capable job. To start the season off, the choir performed at open house last fall by presenting a concert. The annual Christmas program was another event in which the choir took an active part by providing background music. The choir and newly organized 17 piece orchestra which is under the direction of Mr. Stoyke, presented a concert in February. Instead of the usual operetta production, this year the choir put on an Easter cantata entitled "Seven Last Words of Christ" by Theodore Dubois. High ratings were received at both the district and state music contests.



First row, left to right: Marcia Emmert, Marilyn Matheson, Glenna Case, Janet Massicotte.
Second row: Cynthia Crohn, Janet Wahlquist, Maureen Morley.
Third row: Lu Anna West, Gloria Wenzel.

First row, left to right: Luella Hoekstra, Lu Anna West, Janet Massicotte, Gerry Scudder, Mary Kuno, Bernice White, Janet Wahlquist, Kathleen De Nio, Mary Elko.

Second row: Karen Hursh, Glenna Case, Nancy Carlson, Barbara Webb, Karen Bengtson, Bonnie Nygren, Virginia Woodrich, Jean Hawkinson.

Third row: Joan Gamelin, Vivian Nelson, Joan Julien, Patricia Thurnbeck, Joyce Baker, Diane Nickelson, Lois Sovereign, Kittee Berfelz.

Fourth row: Kenneth Ozment, George Rieck, Lawrence Johnson, Gerald Muller, Richard Valenty, Donald Elwell, Ralph Elliott, Gerald Marier.

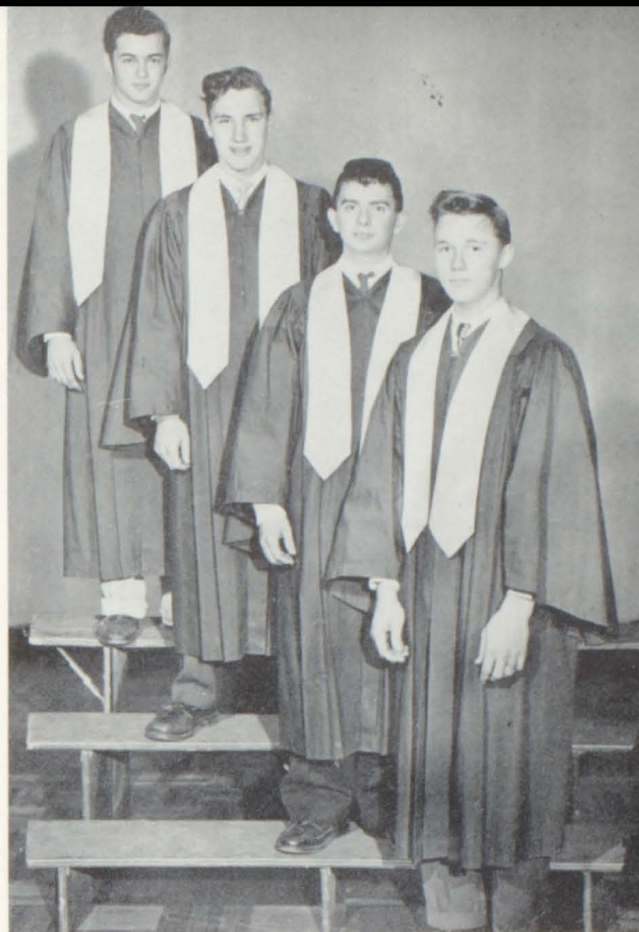




Mr. Richard Stoyke, choir director

Mr. Stoyke, being here only one year has shown his ability in music, not only being a choir director, but organizing and instructing an orchestra.

The still popular boy's group around school is the Men's Quartet. They have sung at various meetings such as the Letterman's Club and church. They include Burton Wahlquist singing the high tenor, Jerry Carlson singing second tenor, Donald Elwell as first bass, and Larry Johnson carrying the low bass.



Left to right: Lawrence Johnson, Jerry Carlson, Donald Elwell, Burton Wahlquist.



First row, left to right: Marilyn Matheson, Marcia Emmert, Mary Ekblad, Maureen Morley, Gayle Stokes, Jeanette Lightfoot, Charlene Tolzmann, Gloria Wenzel.

Second row: Darlene Oothoudt, Sharon Johnson, Jean Tizard, Sharon Owens, Beverly Sahlin, Cynthia Crohn, Connie Ostrom.

Third row: David Klinefelter, Raymond Brown, Dick Carlson, Mickey Corbett, Chester Hapka, Richard Cox.

Fourth row: Bill Volkman, Richard Palmer, Rodney Tuttle, Jerry Carlson, Marlene Palmer.

Band



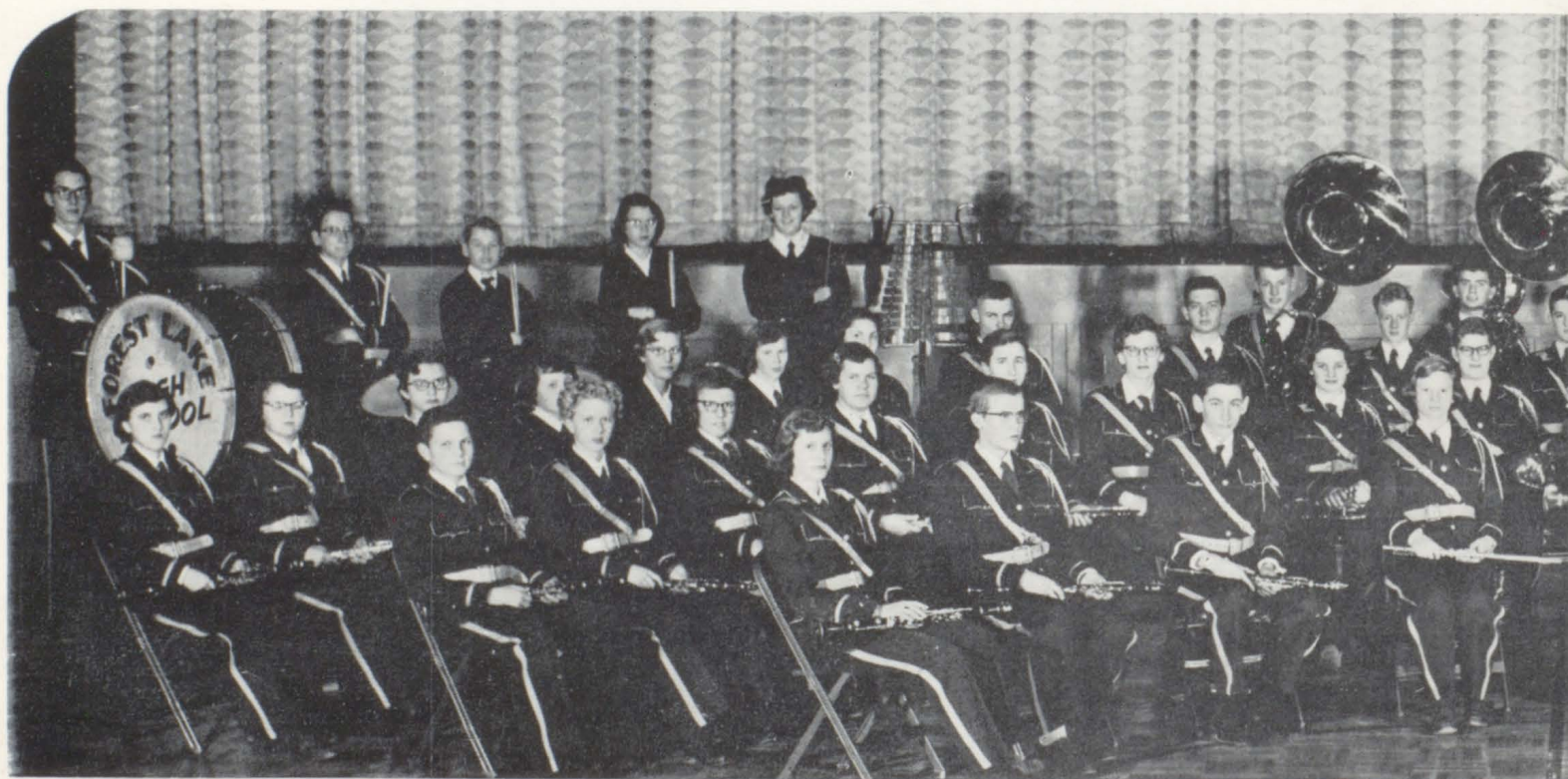
Mr. Nelson, band director.

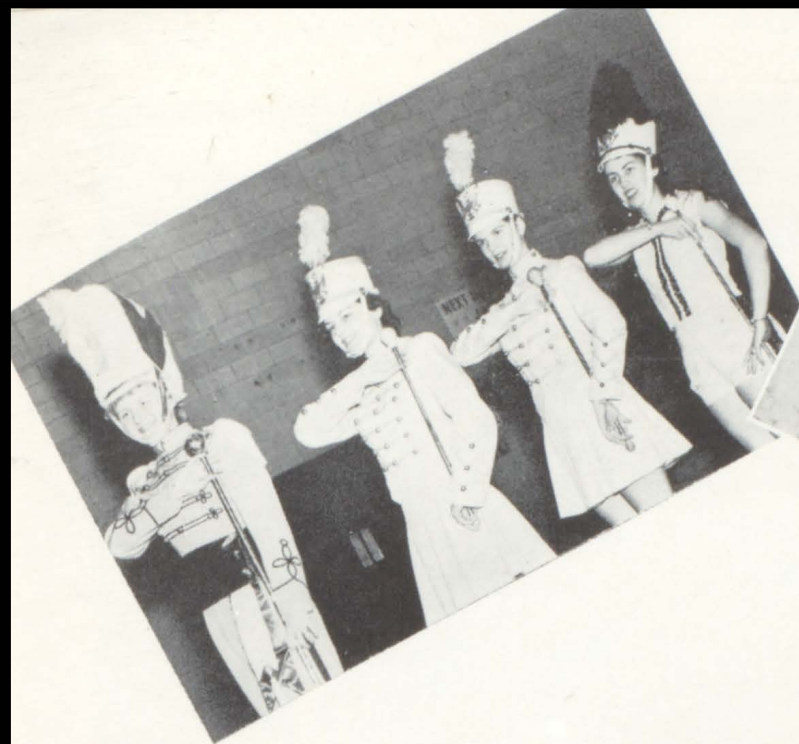
Dressed in our good old colors of maroon 'n gold, it's easy to spot our high stepping band wherever they are performing. Among their many performances this year and during the summer, playing for open house, various concerts, music contest, and the Christmas program, head the list. And of course we can't pass up their marching — Memorial Day parade, Fourth of July parade, the FLHS homecoming, and various parades at Lindstrom and North Branch.

Whenever our teams played a "home" game our band was always there rendering forth with marches, novelties, and of course our school song. They played for all the pepfests during the year, boosting our team on to victory.

This year, for the first time in history. Forest Lake had the privilege of entertaining the various school bands, choirs, soloists, and ensembles in the district music contest.

Sixty strong, the band under the direction of Mr. Rollin Nelson, has purchased various new instruments including a new bass drum. I think we can safely call Forest Lake's band the "pride 'n joy of Forest Lake"!





Forest Lake Majorettes, left to right: Connie Ostrom, Glenna Case, Marlene Palmer, Donna Christenson.



Band Sectional, first row, left to right: Ken Hallberg, Bev Sahlin, Charlene Tolzmann, Eunice Lundquist.

Second row: Janet Pederson, Marcia Emmert, Mr. Nelson, Maureen Morley.



Homecoming



Forest Lake High School marching band lead by drum majorette, Marlene Palmer.

Evon Van Elsberg being crowned queen by Mr. Football, Bob Johnson.

One of the many homecoming floats.





Queen candidates from left to right: Connie Ostrom, Betty Mae Broadbent, Evon Van Elsberg, Glenna Case, Luella Hoekstra.

Fair skies and warm temperatures set the scene for Forest Lake's Homecoming on September 24, 1954. The weatherman did his best to provide a perfect day for the annual festivities. After weeks of suspense Evon Van Elsberg was crowned Homecoming queen during the halftime ceremony by Bob Johnson, Mr. Football. The excitement reached fever pitch as students and teachers alike worked to bring school spirit back to old grads. Then the careful planning came to a climax with the big game and dance. After defeating Pine City 12 to 0, both team and spectators danced to the music of Les Swan, as the climax to a perfect day.



The queen candidates receiving their gifts from Mr. Football, Bob Johnson.



Homecoming Queen - - 1954



Evon Van Elsberg



Talking it over . . .



The future . . .



Center of Attraction!

The new look?



Christmas Pageant

"For unto us a child is born, unto us a son is given; and the government shall be upon his shoulders—" The annual high school Christmas Pageant was entirely based on biblical reference. Backstage, John Smith read the Christmas story while the acting on stage was done in pantomime by the students portraying the angels, shepherds and Mary and Joseph. Under the direction of Mr. Stoyke and Mr. Nelson, the band and choir working together provided interludes of music. Effective lighting by Mr. Kennedy helped to create different moods.

Below: Angel Gabriel portrayed by Marlene Palmer and Mary, played by Dee Ann Forsberg. At left: Christmas Angels, left to right: Margie Harstad, Betty Vlasak, Marlene Palmer, Marlene Collen, Lora Lee Simmons.



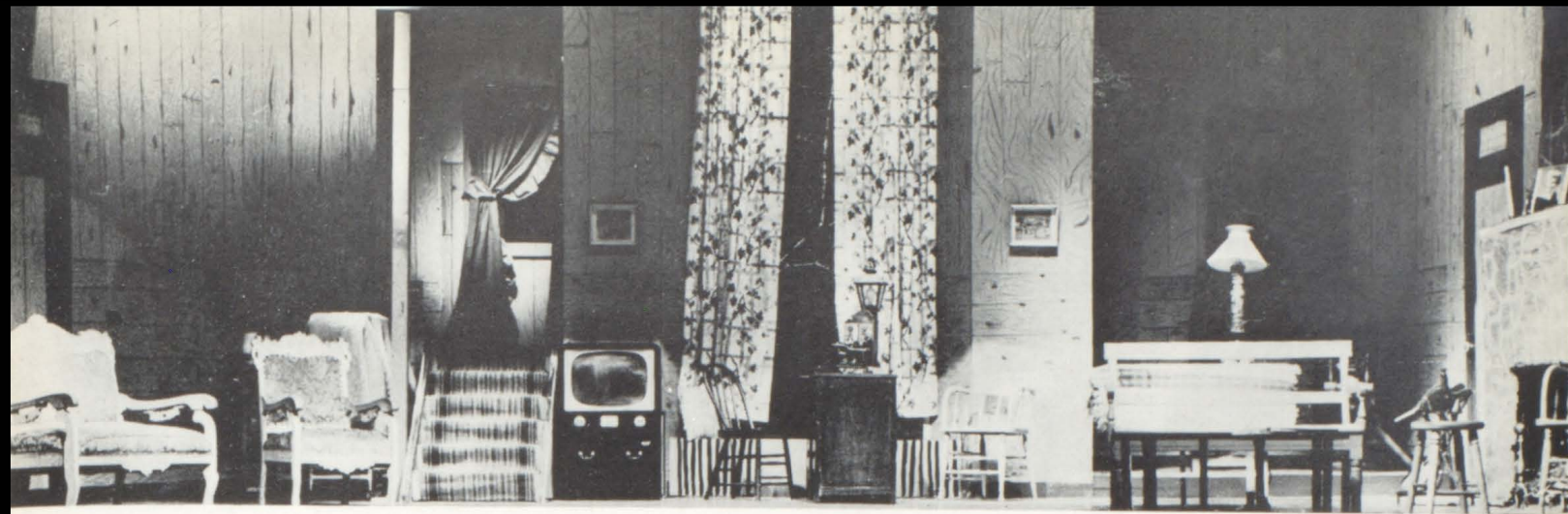
On Borrowed Time

"On Borrowed Time", the 1954 junior class play, was a tense drama written by Paul Osborne, produced and directed by Wallace Kennedy. Something which has never been done before was the double casting of the feminine roles. Another unusual aspect was the casting of Johnny Bujold, a first grader, who played one of the leading roles, Pud. Gramps, in real life, Jerry Carlson, portrays the part of a man trying to escape death. Demetria, played by Marcia Emmert and Vida Hovey, tried to win Pud's guardianship, while Granny, played by Janet Pederson and Marlene Palmer tried to prevent this.



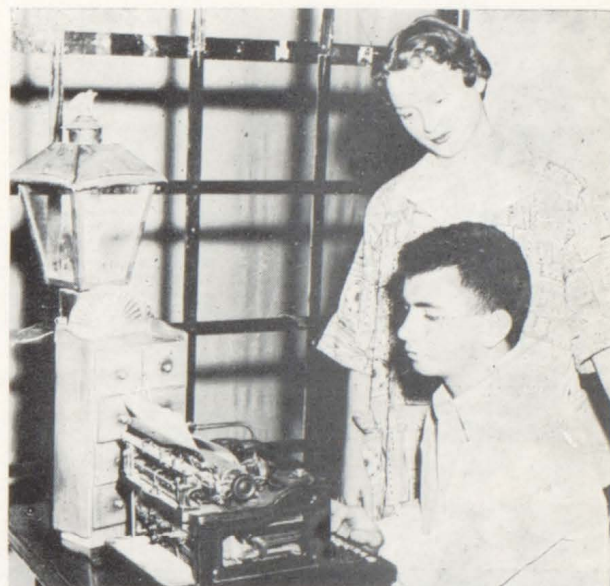
Above: a scene from the play where Gramps is trying to get Mr. Brink down from the tree. At the right: a scene in the house in "On Borrowed Time," with Demmie, Marcia and Granny.





Three pigs and a New England accent were only a small portion of the problems the Seniors had putting on the class play. The comedy, "January Thaw", written by William Roos, was set in the New England states. Troubles had only begun when the Gages and the Rockwoods both held the ownership of the same house.

The Gage family were portrayed by Karen Woodrich as Marge, Donny Elwell as Herbert, and their daughters Connie Ostrom as Barbara, Marcia Emmert as Sarah, and Janet Pederson as Paula. Fredia, Betty Mae Broadbent, was their maid. Those in the Rockwood family were: Gary Smith as Jonathan, Luanna West as Mathilda, Burton Wahlquist as Matt and Jerry Carlson as Uncle Walter. Trying to solve the mix-up, legally and orderly were: Kenny Hallberg as the lawyer and Neil Miles as the sheriff. The production was directed by Mr. Wallace Kennedy, speech instructor.



J
a
n
u
a
r
y

T
h
a
w



Seated, left to right: Art Turnquist, Betty Mae Broadbent, Glenna Case, Jerry Carlson, Duane Erickson.
 Standing: Dick Carlson, Jeanette Lightfoot, Ted Olson, Juris Kauls, David Schatz, Janice Hoglund, Richard Rudin, Jim Trudeau.

Student Council

Our Student Council form a connecting link between the students and faculty. The thirteen members, under the direction of Mr. Manley, represent all grades 7 through 12. The beginning of a busy year, the Student Council journeyed to the Stillwater State Prison. One of the many projects of the year, was purchasing a movie camera, with which movies of all the outstanding activities were taken. The Council sponsored a Student Lounge at the P.T.A. Halloween Carnival. Two fund raising projects were the Rioux fund and the Skating Rink Benefit Fund. Accompanying Mr. Manley, four Student Council members journeyed to the state Minnesota Student Council Convention at Albert Lea, Minnesota. They also were represented at the District Convention at Alexander Ramsey this spring.



Left to right: Ted Olson, Dick Carlson, Duane Erickson, Jerry Carlson, Mr. Manley, Glenna Case, Janice Hoglund, David Schatz, Richard Rudin, Jeanette Lightfoot.

C o n c e s s i o n s



First row, left to right: Jean Stanek, Diane Cedergren, Charlotte Arundel, Beverly Shippy, Mary Ramsdell, Roberta Anderson, Catherine Olson, Marilyn Winick.
 Second row: Carol Anderson, Nancy Peterson, Evalina Turnquist, Judy Holtzbauer, Judy Brine, Sandra Solomon, Darlene Simmons, Connie Frandle.
 Third row: Gary Rosenberg, Beverly Ciesielski, Kay Fuglie, Joanne Stanek, Gail Anderson, Diane Johnson, JoAnne Worth.
 Fourth row: David Crafford, Robert Schlaeger, Donald Dow, Clyde Swensen, Michael Trepanier, David Koch.

The newest organized club at Forest Lake, is the Camera Club. Organized by the Student Council, the club is under the direction of Mr. Rafferty, Mr. Harper, and Mr. Manley. The club helps to stimulate the interest of the proper use of cameras and equipment. The Camera Club is represented by each grade 7 through 12. President is Duane Erickson, Vice President Lu Anna West, Secretary Janice Hoglund, and Attendance Secretary Glenna Case.

Camera Club

First row, left to right: Richard Cox, Donald Dow, Dean Haynes, Rosemary O'Gara, Joyce Winch, Nancy Webb, Loretta Urman, Gerry Johnson, Karen Dickey, Marilyn Proulx, James Nickelson.
 Second row: John Duncan, Mary Williams, Darlene Hoffman, DeDe Forsberg, David Crafford, John Erickson, Janet Hughes, Shirley Garrison, Jane Turnquist, Joan Moorhouse, Bernette Erickson, Carol Erickson, Virginia Woodrich, Ted Olson.
 Third row: Jerry Thurnbeck, Marlene Falmer, Elaine Schroder, Sonja Olson, Joan Julien, Rhoda Kinneman, Betty Broadbent, Joyce Baker, Glenna Case, JoAnne Worth, JoAnn Proulx, Ronald Gamache, Mr. Harper.
 Fourth row: Mr. Manley, Beverly Lunde, Wallace Hillman, Ruth Maehren, Betty Vlasak, Janice Hoglund, Ken Ozment, Patsy McKittrick, Duane Erickson, Diane Nickelson, Lu Anna West, Patricia Thurnbeck, Albert Schroeder, Herman Kauls, Raymond Young, Mr. Rafferty.



T h e s p i a n s



First row, left to right: Connie Ostrom, Marcia Emmert, Vida Hovey, Cynthia Crohn, Glenna Case.
Second row: Lu Anna West, Diane Nickelson, Marlene Palmer, Betty Vlasak, Luella Hoekstra, Betty Mae Broadbent, Janet Pederson.
Third row: Gary Smith, Art Turnquist, Jerry Carlson, Pete Ramsdell, John Erickson, Ken Hallberg.

Thespian troupe 1026 has twenty-two members. Wallace Kennedy serves as the troupe sponsor with President Marlene Palmer, Vice President Jerry Carlson, Secretary Cynthia Crohn and Treasurer Marcia Emmert as troupe officers. A full fledged Thespian has put in one hundred hours of work in either acting or working backstage. For every additional one hundred hours each member receives one star. Two activities of the group have been selling Ranger pennants and accepting the major responsibilities for dramatic productions. Two formal initiations are held each year.

C h e e r l e a d e r s

Left to right: Gloria Wenzel, Glenna Case, Dick Tyler, Kittee Berfelz, Connie Ostrom.





First row, left to right: Lois Balfanz, Marcia Emmert, Marlene Palmer, Janet Pederson, Vida Hovey, Darlene Hoffman, Rosemary O'Gara, Ted Olson.

Second row: Luella Hoekstra, Jeannette Lightfoot, Marilyn Blakeslee, Betty Mae Broadbent, Betty Vlasak, Glenna Case, Joan Julien, Patricia Thurnbeck, Donald Elwell.

Third row, Charles Smith, Lu Anna West, Raymond Brown, Kenneth Ozment, Art Turnquist, Dick Konobeck, Leo Holl, Jerry Carlson.



Above: Vida Hovey, FORESTER editor.

Early last fall production started rolling on the 1954-55 edition of the FORESTER with the four editors accompanied by Mr. Rafferty journeying down to Augsburg College in Minneapolis. The annual Yearbook Clinic gave the editors some new ideas and other ways to improve their book. The staff began by taking pictures, and continued with the promotion of sales, writing of copy, setting up of dummy pages, and preparing copy for the printer. Tuesdays and Thursdays after school, and many Saturdays for the past couple of months you could find the FORESTER staff hard at work in the BREEZE room. And of course, there's always the last minute rush! This is your yearbook and we sincerely hope you like it.

FORESTER

At the right is the FORESTER staff hard at work.

From left to right are: Betty Mae Broadbent, Glenna Case, Vida Hovey, Lu Anna West.



FFA



The Future Farmers of America was this year recognized as among the three outstanding chapters in the state in national competition. The chapter was rated a Silver Emblem chapter, honoring our chapter among the top 80 of the nation. This award is based on the total program and achievement of the chapter for the past year.

The chapter farm has been the big project for the second year. The forty acre farm is operated by the members. The boys must assume all responsibilities in the management of the farm. The chapter has purchased a tractor and equipment for the farm. The farm has been a big asset in providing experience and financial assistance to the chapter. The big event each year is the parent and son banquet which is held during National FFA Week in February. Over 25 awards were presented to boys who had outstanding achievements in agriculture and FFA work. Holder of the coveted Star Farmer award for the past year is Kenny Ozment, the chapter president.



Chapter Farmers. First row, left to right: Emil Gillert, Bill Jones, Byron Hayden, Roy Johnson, Chuck Duncan, Gerald Dupre, Richard Quigley, Bob Johnson.

Second row: Al Cronk, Byron Anderson, Louis Koch, Joe Gamache, Ron Bowman, Ronald Gamache, Don Johnson, Lyle Anderson, Jim Palmer.

Third row: Bob Taylor, Allan Robinson, Dick Carlson, Bruce Swenson, Albert Schroeder, Kenny Johnson, Wayne Nickelson, Jerry Carlson, Dick Tyler, Richard Sullwold.

Fourth row: Mr. Sandager, advisor, Darryl Sawyer, Jerry Marier, Richard Moorhouse, Wallace Hillman, David Klinefelter, Ray Brown, Roger Bodine, Gary Houle, Ken Ozment.





Greenhands. First row, left to right: Harold Carr, Donald Duraine, Donald Husnik, Neil Banta, Paul Parenteau, Myron Lindgren, Robert Quist, Lowell Palmer, Kenneth Waha.

Second row: Norman Perreault, Lyle Erickson, Richard Klinefelter, Gordon Schmuck, Mark Swenson, Roger Buske, Glen Schleusner, Thomas Anderson.

Third row: Mr. Paulson, Gene Leroux, David Rignell, Thomas Hollihan, Gerald Jensen, Robert Cronk, Joseph Millaly, Burdell Hodges, Donald Domine, Dale Long, Richard Anderson.

FHA

The Future Homemakers of America is a group organized for girls in grades 9 through 12, teaching them better homemaking. Last summer three girls went to the State F.H.A. camp. The group jourenyed to the University, learning the latest fashions and homemaking. Four members went to the state convention in Minneapolis this year.



First row, left to right: Vida Hovey, Phyllis Merfield, Darlene Hoffman, Louise Reese, Rosemary O'Gara, Becky Arundel, Betty Ciesielski, Helen Arundel, Jane Turnquist, Carolyne Erickson, Karen Dicky, Geraldine Johnson, Joanne Proulx, Marcia Emmert, Evelyn Olson, Jeanette Ramsden, Verna Allison, Janice Johnson, Carol Ranier.

Second row: Alice Alcock, Delores Sexson, Marilee Cohoes, Susan Corwin, Mary Kuno, Kittee Berfelz, Gayle Stokes, Mary Ekblad, Shirley Garrison, Laverne Kost, Eileen Ott, Beverly Tyler, Lois Balfanz, Nancy Nygren, Joleen Cowle, Deanna Handrum, Judy Olson, Joan Emmert, Laurel Matheson, Inez Morehead, Geraldine Rioux.

Third row: Virginia Reynolds, Bernice Maehren, Nancy Carlson, Elaine Schroeder, Mardi Van Elsberg, Sonja Olson, Charlene Tolzmann, Donna Warner, Darlene Oothoudt, Rhoda Kinneman, Joyce Baker, Patricia Thurnbeck, Marlys Nordin, Judy Houle, Eunice Lundquist, Kathleen Giggis, Janice Sahlin, Betty Peterson, Sharon Anderson, Janet Pederson, Shelbe Salomon, Marilyn Blakeslee, June Onsager, Shirley Odermatt.

Fourth row: Cynthia Crohn, Janet Massicotte, Joyce Belland, Eudene Hovey, Jean Hawkinson, Ruth Maehren, Barbara LaKamp, Dianne Johnson, Joan Julien, Betty Vlasak, Diane Nickelson, Joan Moorhouse, Geraldine Scudder, Patsy McKittrick, Dorothy Baker, Darlene Johnson, Bonnie Nygren, Joyce Rimer, Janet McGrath, Diane Olson.

G. A. A.



First row, left to right: Rosemary O'Ga'a, Becky Arundel, Betty Ciesielski, June Nelson, Joyce Duncan, Joan Emmert, Joleen Cowles, Janice Sahlin, Verna Allison, Phyllis Edstrom.
Second row: Louise Reese, Mary Ekblad, Gayle Stokes, Joan Julien, Jane Turnquist, Maureen Morley, Joan Moorhouse, Barbara Weckerly, Beverly Sahlin, Jackie Alshouse.
Third row: Donna Warner, Lois Sovereign, Elaine Schroeder, Mardi Van Elsberg, Joyce Baker, Pat Thurnbeck, Marlys Nordin, Vida Hovey, Dede Forsberg.
Fourth row: Karen Anderson, Charlene Tolzmann, Janice Hoglund, Betty Vlasak, Lu Anna West, Lanora Whitman, Marjorie Harstad, Diane Nickelson, Joan Schatz, Diane Thurnbeck, Dorothy Baker, Beverly Anderson.

The Girls Athletic Association is an organization which meets once a week for various activities. Some of these activities are basketball, softball, ping-pong, badminton, volleyball and bowling. The organization is under the direction of Mrs. Norma Rowe, but the president usually presides over each meeting. A business meeting is held every week before the various activities commence.

The newly organized Lettermens Club consists of 35 boys who have earned letters in athletics. The purpose is to encourage their interest in athletics during school and thereafter. Graduating seniors of the club will receive an activity card admitting them to all athletic events in Forest Lake. Two annual Parent's Days will interest the parents by receiving two free tickets. These admit them to one basketball game and one football game followed by a social meeting. Jerry Carlson is President, Vice President, Tom Zak, Secretary-Treasurer Neil Miles. The advisors of this club are the coaches and Mr. Grund.

L e t t e r m e n



First row, left to right: Bernie Daninger, Bill Volkmann, David Hermes, Ted Olson, Tom Heisler, Billy Jones, LeRoy Houle, Jerry Muller.
Second row: Dean Weiss, John Skoglund, Jerry Carlson, Larry Johnson, Joe Hamelin, Jerome Pepin, Ronald Dupre, Jim Hermes.
Third row: Raymond Johnson, Leo Holl, Robert Johnson, Ai Cronk, Billy Boudreau, Richard Konobeck, Tom Zak, Art Turnquist, George Rieck.
Fourth row: Donald Hapka, Kenny Ozment, Richard Collen, Gary Houle, Gerald Brine, Mickey Preston, Charles Smith, Ivars Kauls, Bob Taylor, Duane Erickson.

Student Librarians



First row, left to right: Betty Vlasak, Elaine Schroeder, Louise Reese, Ruth Maehren, Flora Sexson.
Second row: Karen Anderson, Joyce Rimer, Barbara Weckerly.

Hall And Stair Monitors



First row, left to right: Cynthia Crohn, Jill Arundel, Carol Rainer, Darlene Hoffman, Jean Schmitt, Janice Dahlberg, Ruth Peterson, Virginia Reynolds, Rosemary O'Gara, Dee Forsberg, Jeanette Ramsden.
Second row: Lois Balfanz, Beverly Sahlin, Janet Massicotte, Maureen Morley, Jane Turnquist, Marlene Rehbein, Karen Jensen, Kittee Berfelz, Glenna Case, Connie Ostrom, Marcia Emmert.
Third row: Lu Anna West, Marlys Nordin, Joan Moorhouse, Beverly Lunde, Dorothy Rehbein, Joyce Belland, Betty Peterson, Diane Nickelson, Barbara LaKamp, Geraldine Sandstrom, Betty Mae Broadbent, Rhoda Kinneman, Shirley Garrison.
Fourth row: Betty Vlasak, Mary Ann Williams, Karen Anderson, Jeannette Lightfoot, June Ryals, Gloria Wenzel, Lois Sovereign, Ruth Maehren, Helen Pearson, Everett Anderson, Milton Lindgren, Roger Bodine, Richard Cox.

Office Help



Left to right: Beverly Sahlin, Betty Vlasak, Donna Dupre, Melba Sahlin, Clemence LaMotte, Betty Broadbent, Marlene Palmer, Lois Sovereign, Luella Hoekstra, Anne Goiffon.

Cafeteria

First row, left to right: Donald Reese, Allan Gundersen, Henry Gregoire, Karen Gamache, Shirley Genz, Rosalie Gamache, Beverly Shippy.

Second row: Ronald Gamache, David Crafford, May Gregorie, Henritta Gregoire, Sharon Pearson, Margaret Hollihan, Mona Duraine.

Third row: Joseph Gamache, Flora Scxson, Leila Anderson, Sonja Olson, Shirley Garrison, Rae Lou Gamlin.

Fourth row: Herman Kauls, Robert Bodine, Kenneth Ozment, Byran Anderson, Darlene Hoffman, Rhoda Kinneman, Lois Taylor.

First row, left to right: Beverly Tyler, Karen Woodrich, Jean Schmitt, Eileen Ott, Beverly Gluck.

Second row: Diane Thurnbeck, Virginia Woodrich, Donna Christensen, Mary Kuno, Marlys Kari, Inez Moorehead, Rae Lou Gamlin.

Third row: Luella Hoekstra, Bill Boudreau, Jerry Javanovich, Bill Jones, Dick Carlson, Richard Cox, Allan Robinson, Virginia Reynolds.

Tumbling



B u s D r i v e r s



First row, left to right: Charles Wells, Otto Parson, George Okeson, George Harguth, Don Johnson, Joe Gregoire, Mike Holtzbauer, Jerry Haselbauer.

Second row: Franklin Sward, Clarence Johnson, Elmer Peterson, Irvin Eggers, Oscar Swenson, Clem Dupre, Merton Mulvihill, John Fanando, Harold Anderson, William Tuttle, Richard Alcock, Stanley Tolberg, Hector Sivigny, Gene Wright, Paul Scherer, Howard Johnson.



C o o k s

Left to right: Florence Collins, Linde Rosckes, Inga Schmidt, Peg Ekdahl, Agnes Patrin, Myrtle Garen, Grace Anderson.

J a n i t o r s



First row, left to right: George Okeson, Jennie Lindemann, Murray Swanson.

Second row: Al Lellman, Frank Collins, Millard Olson, Ray Erickson.

Shadow And Substance



The Neighbors





Tumbling?

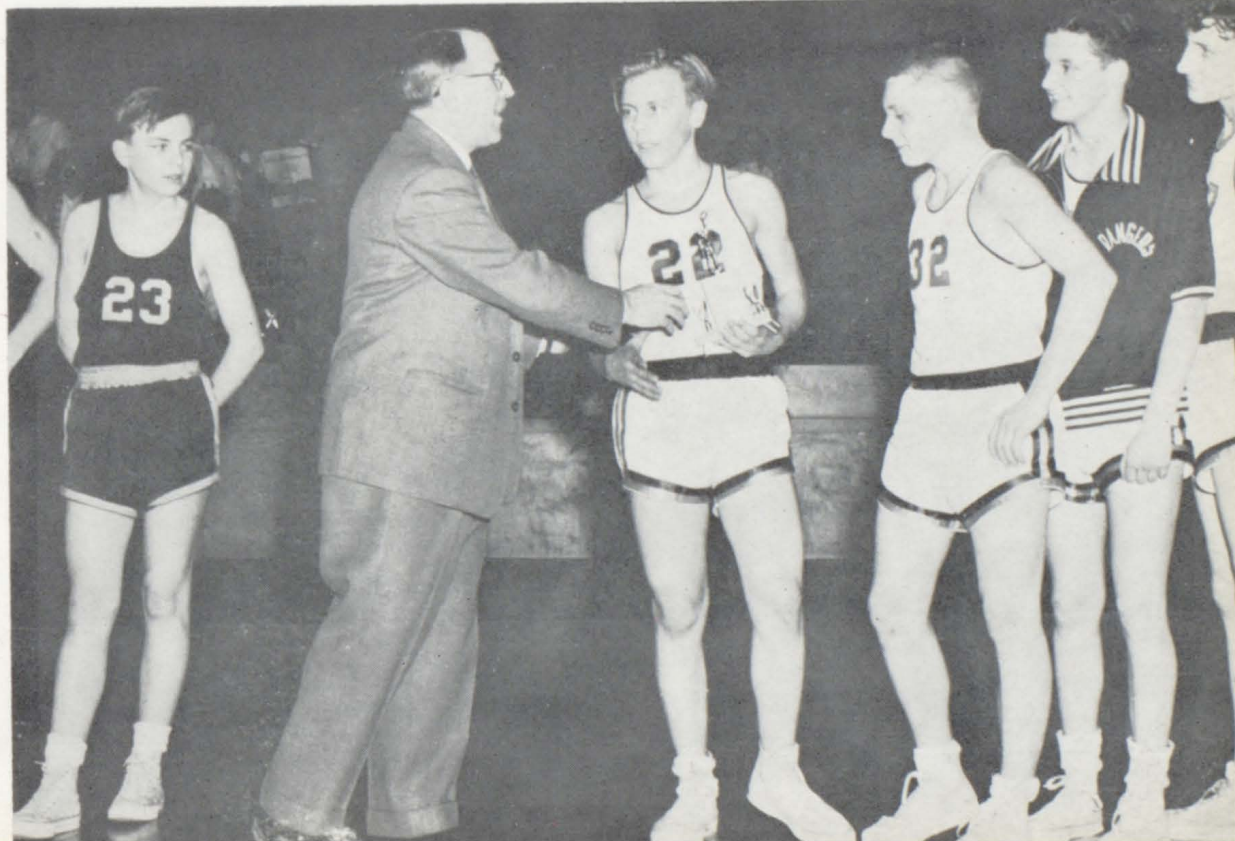
Visual Aids

First row, left to right: Jim Cowle, David Stark, Tom Lynch, Jerome Grundhofer, Mr. Markuson.

Second row: David Baumann, Mickey Corbett, Jack Maslowsky.

Third row: Jerry Brine, Robert Mackey.

Congratulations!





First row, left to right: Mr. Paine, Ray Johnson, Larry Johnson, Bill Jones, LeRoy Houle, Lyle Anderson, George Rieck, Dick Kono-
beck, Tom Heisler, Mr. Corrigan, Mr. Furey.

Second row: Al Cronk, Rodney Tuttle, Jerry Carlson, Leo Holl, Bill Volkmann, Dean Weiss, Bob Johnson, John Skoglund, Jerry
Brine, Jerry Pepin, Jim Trudeau, Joe Hamelin.

Third row: Ken Ozment, Art Turnquist, Tom Zak, Gary Houle, Dick Collen, Mickey Preston, Bob Cronk, Charles Smith, Ivars Kauls,
Duane Zwolensky, Duane Erickson, Bob Taylor.

Football

FOOTBALL SCORES

Forest Lake 9	Chisago City 7
Forest Lake 6	St. Paul Park 6
Forest Lake 12	*Pine City 0
Forest Lake 6	*North Branch 22
Forest Lake 26	*Rush City 7
Forest Lake 6	*Moose Lake 12
Forest Lake 18	*Lindstrom 6
Forest Lake 0	Mahtomedi 0

* Conference games

All Conference Football, first row, left to right: Mickey Preston,
Charlie Smith.

Second row: Art Turnquist, Ivars Kauls.



Coaches, left to right: Mr. Paine, Mr. Furey, Mr. Corrigan.





First row, left to right: Tom Zak, Mickey Preston, Leo Holl, Bill Volkmann, Charles Smith, Robert Johnson, George Rieck.
Second row: Raymond Johnson, Art Turnquist, Jerry Brine, Ivars Kauls.

The Rangers opened the 1954 football season with 17 returning lettermen under the direction of Mr. Furey and Mr. Paine with Mr. Corrigan coaching the B squad.

The Rangers ran into a little trouble against a tougher than expected Chisago City team. In the second game the Rangers battled non-conference St. Paul Park. The Fureymen hit the season's peak against Pine City in the Homecoming, before the largest crowd in conference history. Pine City was shut out for the first time since entering the conference in 1943.

Against North Branch the Rangers hit the season's low. However, they bounded back the following week to spoil Rush City's homecoming. At Moose Lake the Rangers couldn't click for consistent gains, but held the men of the north to a 6 to 6 tie until Moose Lake scored in the remaining five seconds of the game.

After giving a spectacular performance against Moose Lake the Rangers downed the Lindstrom Bulldogs. In the final game for 13 seniors the Rangers fought the Little Six Conference Champions, Mahtomedi, to a 0 to 0 draw.

Taking all conference honors were: left halfback Ivars Kauls, fullback Art Turnquist, and linemen: left guard Charlie Smith, right tackle Mickey Preston.



First row, left to right: Lyle Anderson, Joe Hamelin, Duane Zwolensky, Niel Miles, Darryl Bradford, Ai Cronk, Jerry Carlson, Rodney Tuttle, Billy Jones.
Second row: Dean Weiss, Gerald Pepin, Duane Erickson, Robert Cronk, Jim Trudeau, John Skoglund, LeRoy Houle.



'54
'55

B a s k e t b a l l

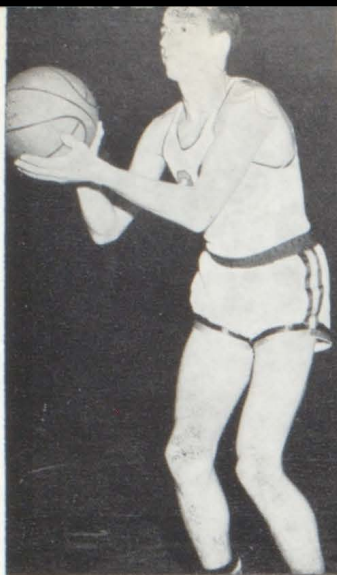
T e a m s



'A' squad, First row, left to right: Ronald Dupre, Tom Zak, Ray Johnson, Leo Holl, Bernie Daninger.
Second row: Mr. Boyd, Robert Taylor, Dick Moorhouse, Don Hapka, Butch Van Elsberg, Ivars Kauls.

First row, left to right: John Skoglund, Richard Lynch, Bert Evgen, Jim Emerson, David Eckblad, Joe Trepanier.
Second row: Mr. Ray, Ken Skoglund, Gerald Solem, David Hermes, Jack Mortensen, Edger Frandle, Mr. Hubal.
Third row: Jim Helgeson, Ricky Pepin, Forest Sexson, Francis Schlaeger, Jim Trudeau, Gene Case, David Rignell, Robert Morehead.

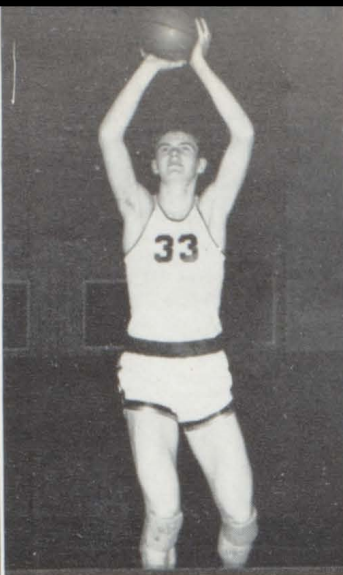




Ivars



Tom



Don



Ray

BASKETBALL SCORES

Rangers	43	Mechanic Arts	63
Rangers	70	Elk River	62
Rangers	65	Cambridge	53
Rangers	57	*Rush City	54
Rangers	55	*Pine City	21
Rangers	55	Willow River	44
Rangers	71	Alumni	88
Rangers	77	Mahtomedi	65
Rangers	58	*Chisago City	50
Rangers	59	*Taylors Falls	44
Rangers	75	*Lindstrom	73
Rangers	65	*North Branch	60
Rangers	66	*Rush City	59
Rangers	70	*Pine City	36
Rangers	55	*Chisago City	60
Rangers	73	*Taylors Falls	54
Rangers	68	*Lindstrom	62
Rangers	69	*North Branch	59
Rangers	53	St. Paul Central	51

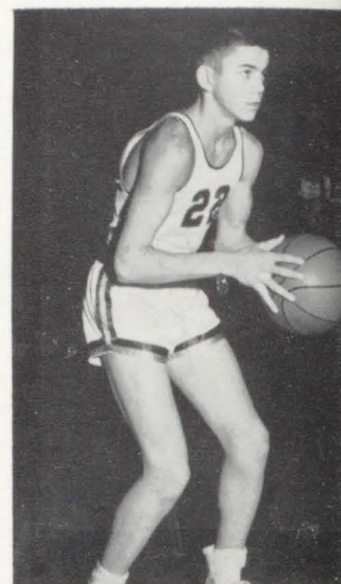
* Conference Games

TOURNAMENT SCORES

Rangers	71	Moose Lake	74
---------	----	------------	----



Leo



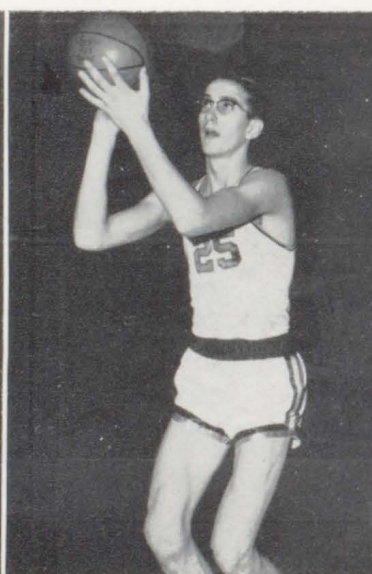
Bernie



Butch



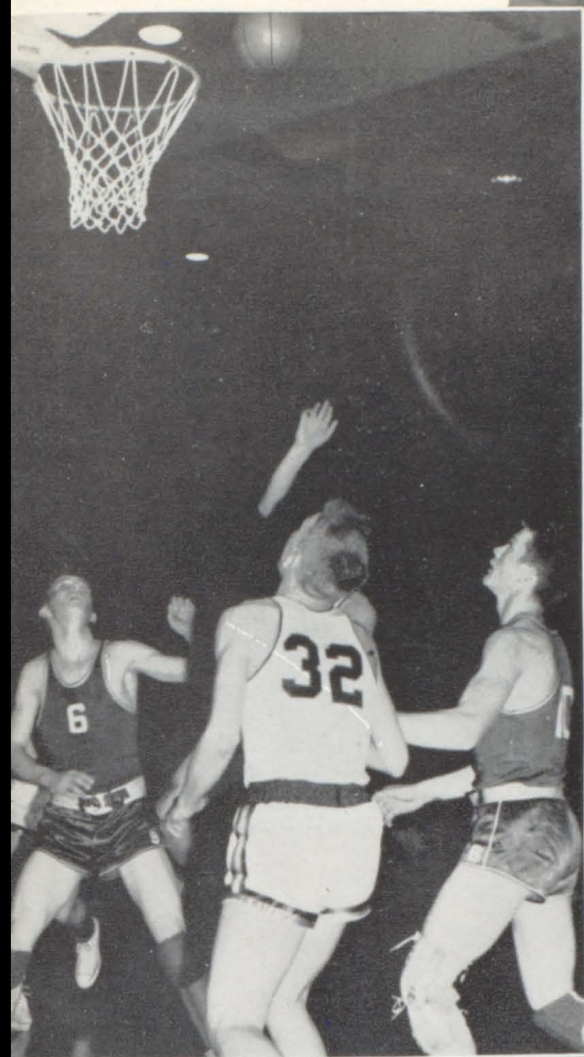
Ron



Dick



Bob



Rangers



*I
n
A
c
t
i
o
n*

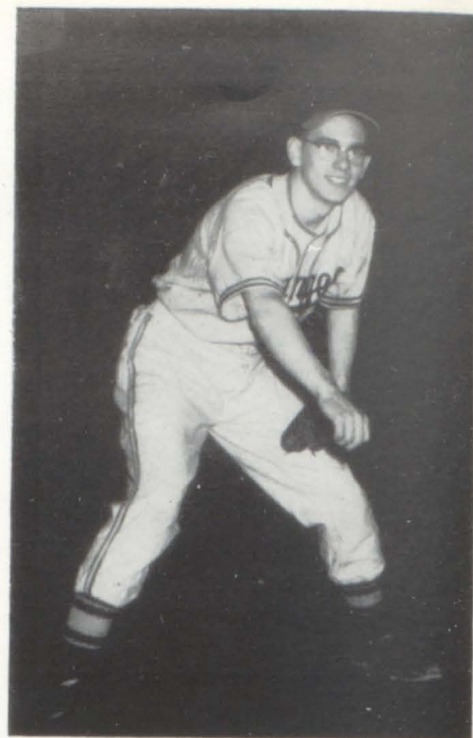


Baseball

Conference Champs

The Rangers ended a very successful 1954 season as Conference Champions. The record was 6 wins and 3 losses for the complete season. The Rangers first game with a veteran White Bear team ended with the Fureymen on the short end of a 1-0 score. But from that time on, the records show a continuous improvement on the Rangers part. Near the end of the season the Rangers trimmed Pine City in a big showdown game, 11-5, giving them the title of Conference Champions. We then advanced to the district, but lost the final game to Moose Lake, by the score of 4-3.

Looking forward to another good season this year, the Rangers are headed by letterman Jerry Pepin on the mound. Others are; Ted Olson, Bert Evgen, Jerry Grundhofer, Gregory Pepin, Jim Trudeau, Ronald Dupre, Dean Weiss, Tom Heisler, DuWayne Kasma, Bill Volkmann, Clyde Swanson, Wayne Erickson, Gary Smith, and Art Turnquist in the infield and outfield. The team is ready for a heavy schedule in 1955.



Ronald Dupre

First row, left to right: Ted Olson, Bert Evgen, Jerry Grundhofer, Gregory Pepin, Jim Trudeau.

Second row: Ronald Dupre, Dean Weiss, Thomas Heisler, DuWayne Kasma, Jerry Pepin, Bill Volkmann.

Third row: Mr. Furey, Herbert Anderson, Richard Volkmann, Jack Trudeau, Clyde Swanson, Wayne Erickson, Art Turnquist.



T r a c k



First row, left to right: Ai Cronk, Charles Smith, Ivars Kauls, Larry Johnson, Ray Johnson.
Second row: Robert Taylor, Jerry Muller, Bill Jones, Bill Boudreau, Wayne Erickson.

The defending district track champions opened up the season in a triangle meet with White Bear and Mahtomedi. The Rangers won the meet by scoring 60 points, with White Bear second with 50 points. Mahtomedi placed third with 30 points. All but six Ranger points were made by underclassmen. Next the squad traveled to North Branch for a four-way meet with North Branch, Pine City, and Chisago City. The Rangers placed second to North Branch. The purpose of this meet was primarily to warm up for the coming district meet. Forest Lake dropped to fourth place in the district meet, placing only two men in first and second places. This entitled them to compete in the regional meet. These two were Ivars Kauls in the 220 and broad jump and Larry Johnson in the 220 yard dash. Ivars placed second in the 220 yard dash and he went into state competition.



Left to right: Ai Cronk, Ivars Kauls, Lawrence Johnson, Jerry Muller.



Senior

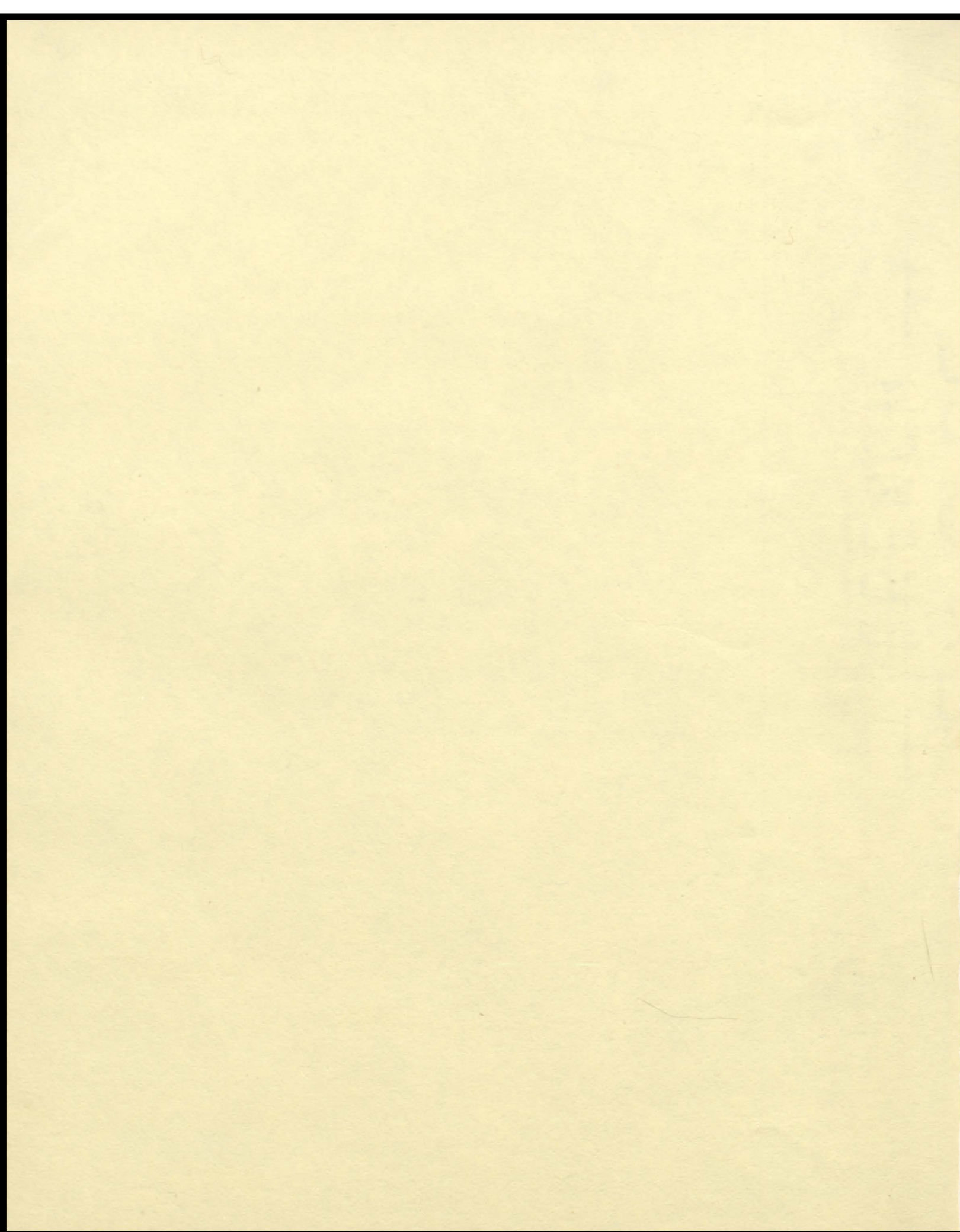
Pep Clubs

Junior



ADVERTISING





HOVEY EQUIPMENT CO.

- International Trucks
- Farmall Tractors
- Refrigeration
- Welding



Phone 2180

Good wishes to the class of 1955

Dr. O. R. Van Wirt

To the Graduate —
Sincere wishes for Continued Success



Congratulations
to the 1955 Graduates

EMMERT Standard Service

VOGEL'S Bar and Restaurant

FOR GOOD FOOD



Bob Johnson Sporting Goods

Forest Lake

BEST WISHES FROM

**BENSON
and
PETERSON**

Oldsmobile

John Deere Implements

Gibson Refrigerators
and Freezers

Best Wishes to Grads
from

DR. C. D. LARSON

- Meats
- Fresh fruits and vegetables
- Milk products
- Frozen foods

RUDY'S SUPER MARKET

Congratulations!

EARLING'S APPAREL

Forest Lake, Minn.

RAY JEANS

Farm Machinery Headquarters

Telephone 322

Forest Lake

Compliments of

PETERSEN DRUGS

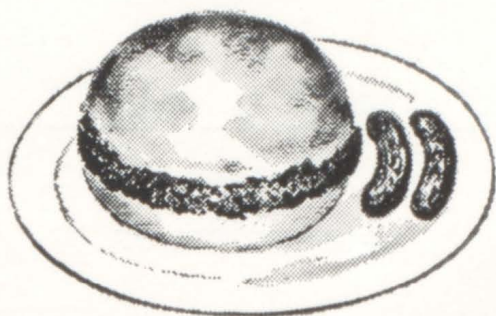
Congratulations to the Graduates

**HAROLD'S
PURE SERVICE**

Forest Lake

Phone 900

You haven't tasted a
real hamburger until
you've tasted one of ours.



WAGNER'S

Keep that new car
in top condition



At the Sign of
FRIENDLY SERVICE

STOKES OIL

Forest Lake, Minnesota

Russell Creamery Co.

"Forest Lake's Own Dairy"
Dial 430

Drop in after school
to the Dairy Bar

- For sodas
- For sundaes
- For cokes



**FOREST LAKE
DEPARTMENT STORE**

Compliments of
H. A. ANDERSON

Insurance — Real Estate

Income Tax Service

Forest Lake, Minnesota

**FOREST LAKE
LOCKER PLANT**

Congratulations, Graduates
J. B. Weisser Lumber Co.

COMPLIMENTS OF
CARTER'S
Jewelry Store



RED OWL AGENCY

Phone 2171

Lyle R. Morehead, Owner

Reub's Tire Shop
TIRE HEADQUARTERS

Phone 2245

BEST WISHES FROM

CARA-VAN DAIRY

STRUBLE AGENCY

Insurance

Forest Lake Provision Co.

Phone 576

Wholesale and Retail Meats

Best Wishes

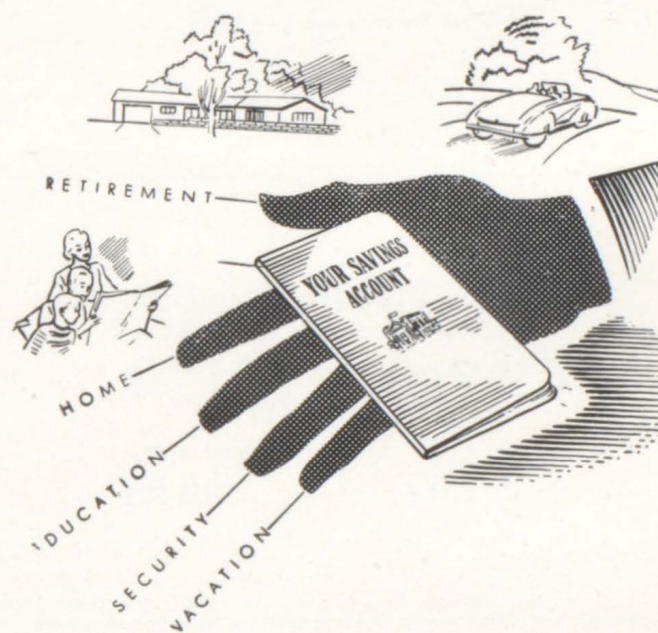
for a Successful Future for

Forest Lake Grads

C. M. Hallberg



GMC



Start it here!

Forest Lake State Bank

Best Wishes from

MARSHALL-WELLS STORE

CONGRATULATIONS

from your Forest Lake

GAMBLE STORE

Compliments of

VOGEL'S INN

J. CORBETT'S VARIETY

5¢ to \$1.00

Forest Lake

Dial 525

Best Wishes to Grads

Dr. J. M. Lyone

TWIN LANES STORE

Groceries

Cold Meats

Soft Drinks

Mobil Gas and Oil

BEST WISHES

Stanley's Texaco

**JACK'S
Sport Shop**

Live Bait

Aluma Craft

Evinrude

Boats

Motors

ALL SPORTSMEN'S NEEDS



COTTAGE CLEANERS

Quality Dry Cleaning — Quick Service Laundry

Free Pickup and Delivery

Phone 2123

Best Wishes from

F. C. Bergh Drugs

Best Wishes for
Future Happiness and Success

RUSTIC INN

Best Wishes to Grads

HOULE GROCERY

Remember your appearance is important.

COTTAGE BARBER
& BEAUTY SHOP

Quality in Education, Morals and
Merchandise Is Worth Striving For

EARL SPRY BUICK

Forest Lake

We Wish You Success
After Graduation

Dr. N. M. Mensheha

KENCO INC.

Phone 483

Forest Lake

Congratulations —
to the class of 1955

**BEN FRANKLIN
STORE**

City Meat Market

H. J. Ersfeld and Son
Forest Lake, Minn.

Congratulations, Grads
and Remember

Forest Lake Greenhouse

for that Senior Prom Corsage

Best Wishes from

**FOREST LAKE
MOTORS**

Authorized Chevrolet Dealer

E. J. HOULE COMPANY

*Quality — Service
Dependability*

Forest Lake, Minn.



Compliments of
EGAN—RINGOLD

BEST WISHES

from

HERMES and HILTON **Real Estate**

Homes — Farms — Business Opportunities

"We can arrange your financing."

Phone 2482

GOOD LUCK

from

Dr. G. M. Ruggles

*Best Wishes
from*

RUPPERT and IVERSON

Your local headquarters for Plumbing and Heating

Always a Good Show at the

FOREST THEATRE

J. H. Boehm's

DAIRY QUEEN

Delicious Cones, Malts and Sundaes

Forest Lake Lanes

Finest Bowling Conditions



Commercial Hotel

"Where All Sportsmen Meet"

H. A. Pepin and Sons

BEST WISHES

from

JOSTEN'S

Health Is Worth Enjoying

Dr. W. M. Lewis, D. C. Phc.

Chiropractor

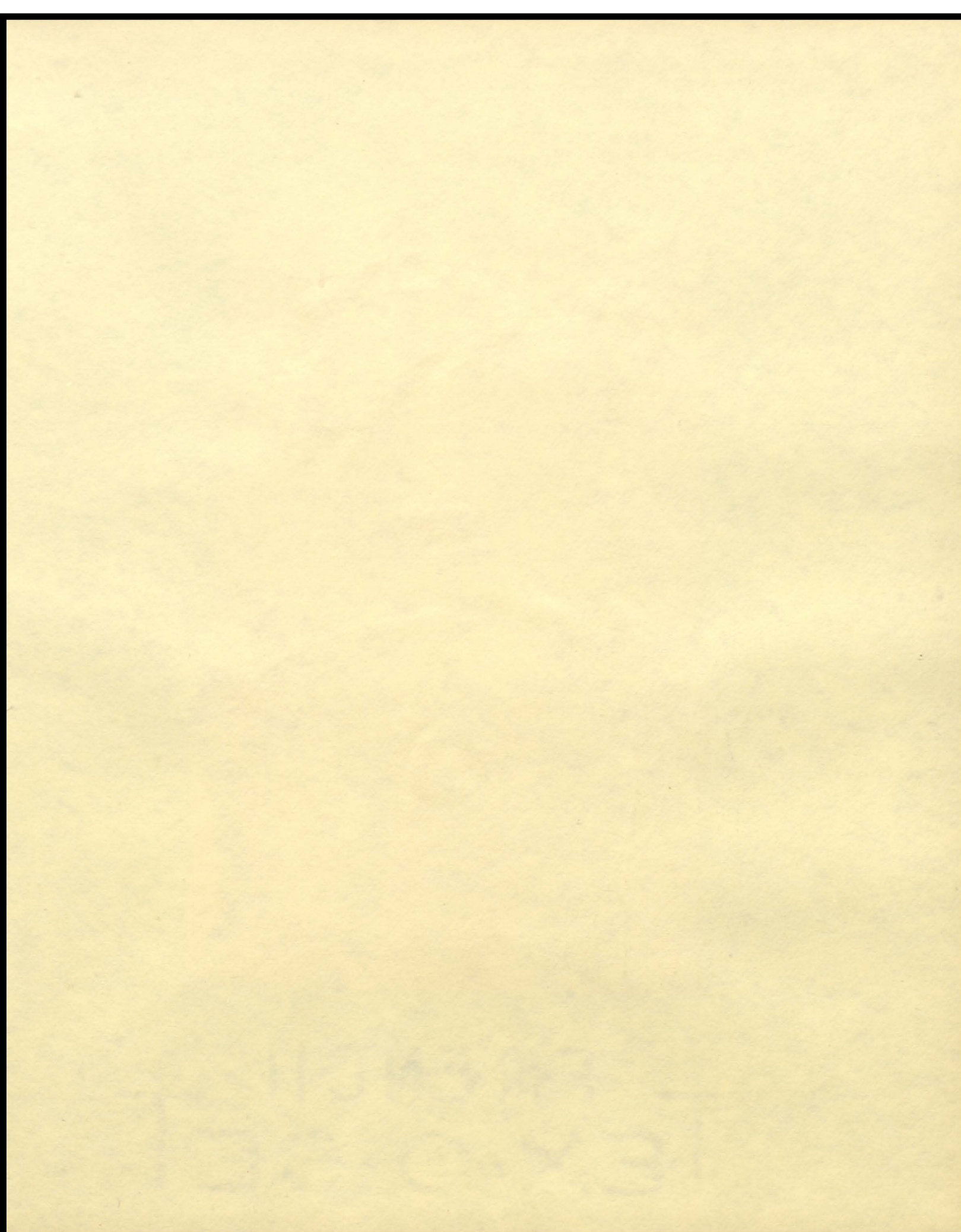
Hamburgers & French Fries
Shrimp Basket
Swirly Top
Soft Drinks

STRIPE DRIVE INN

Quickest Mixing of Feed in Town

Horning's Feed & Produce

South of Forest Lake on Hwy. 61



THE ARITHMETIC OF BETTER BUSINESS

McMACKIN
MARSH
BATEN

AGRICULTURE
IV

AMERICAN
FARMING



BOSS
WILSON
PETERSEN

Applied
SECRETARIAL
PRACTICE

Applied

Youth
faces
its
problem

Pressing
Martin

Laidlaw





Adventures
in English
Literature

INGLIS, COOPER,
OPPENHEIMER
and BENET



FOURTH
EDITION

II

USING
LATIN

SCOTT
GUMMERE
HORN

SF



English
in
Action

TRESSLER

COURSE
FOUR

FOURTH
EDITION

HEATH



GREGG
SPEED
BUILDING
SIMPSON

GREGG
LESLEY
ZOUER

Chemistry
and How



LYONS &
CARNAHAN

ALL
AND
BACK

