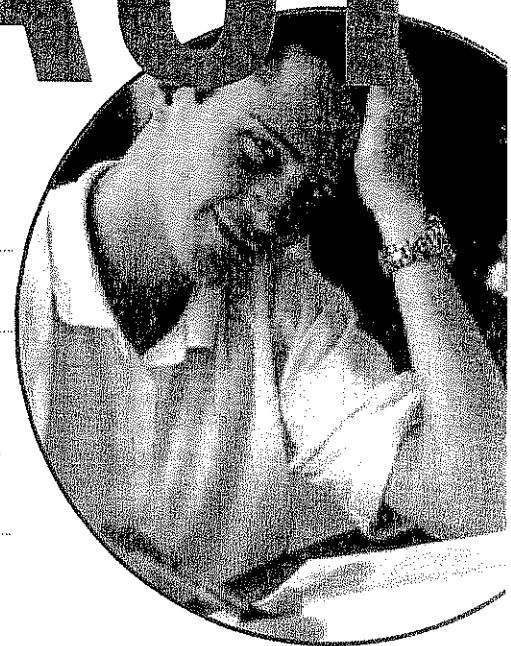


[Everything you need to know]

SAT & ACT



SAT

How often is it administered?

Seven times per year

What is the test structure?

Ten-section exam: Three Critical Reading, three Math, three Writing (the first of which is the Essay), and one experimental section masked to look like a regular section

What is the test content?

Math: Fundamentals through 10th grade math, including Geometry and limited Algebra II

Reading: Sentence completions, short and long critical reading passages, Reading comprehension

Writing: limited grammar rules, word usage, word choice, and a mandatory essay

Is there a penalty for wrong answers?

Yes, 1/4 of a point for each wrong answer on multiple-choice questions

How is the test scored?

200–800 per section, added together for a total score of 600–2400
0–12 for the essay

Are all scores sent to schools?

Unless you enroll in Score Choice™, all of your scores will be reported to colleges.

Are there other uses for the exams?

Scholarship purposes
Certain statewide testing programs

Need more information?

Educational Testing Service (ETS):
609-921-9000, ETS.org;
The College Board: collegeboard.com

ACT

Six times per year

Five-test exam:

Math, English, Reading, Science and Writing (optional)

An Experimental test is added to exams on certain dates only and is clearly experimental.

Math: up to trigonometry

English: Usage/Mechanics and Rhetorical Skills

Reading: four passages, one each of Prose Fiction, Social Sciences, Humanities, and Natural Sciences

Science: charts, graphs, data interpretation

Writing: optional essay

No

1–36 for each test, averaged together for a composite score of 1–36

2–12 for the Writing test

You can choose which scores get sent to colleges.

Scholarship purposes
Certain statewide testing programs

ACT, Inc.:
319-337-1270,
ACT.org

800-2Review • PrincetonReview.com

Test names are the trademarks of their respective owners, who are not affiliated with The Princeton Review. The Princeton Review is not affiliated with Princeton University.

**The
Princeton
Review.**