

GLEN COVE CITY SCHOOL DISTRICT

WHAT AM I VOTING FOR ON
May 17, 2022?

Proposition I

Proposition II

Proposition III

Proposition I

School District Budget

Based on the Tax Levy formula the district's
legal limit was 2.5%

The BOE reduced the amount of taxes to
be levied by \$500,000 bringing the

TAX LEVY to 1.8%

Proposition II

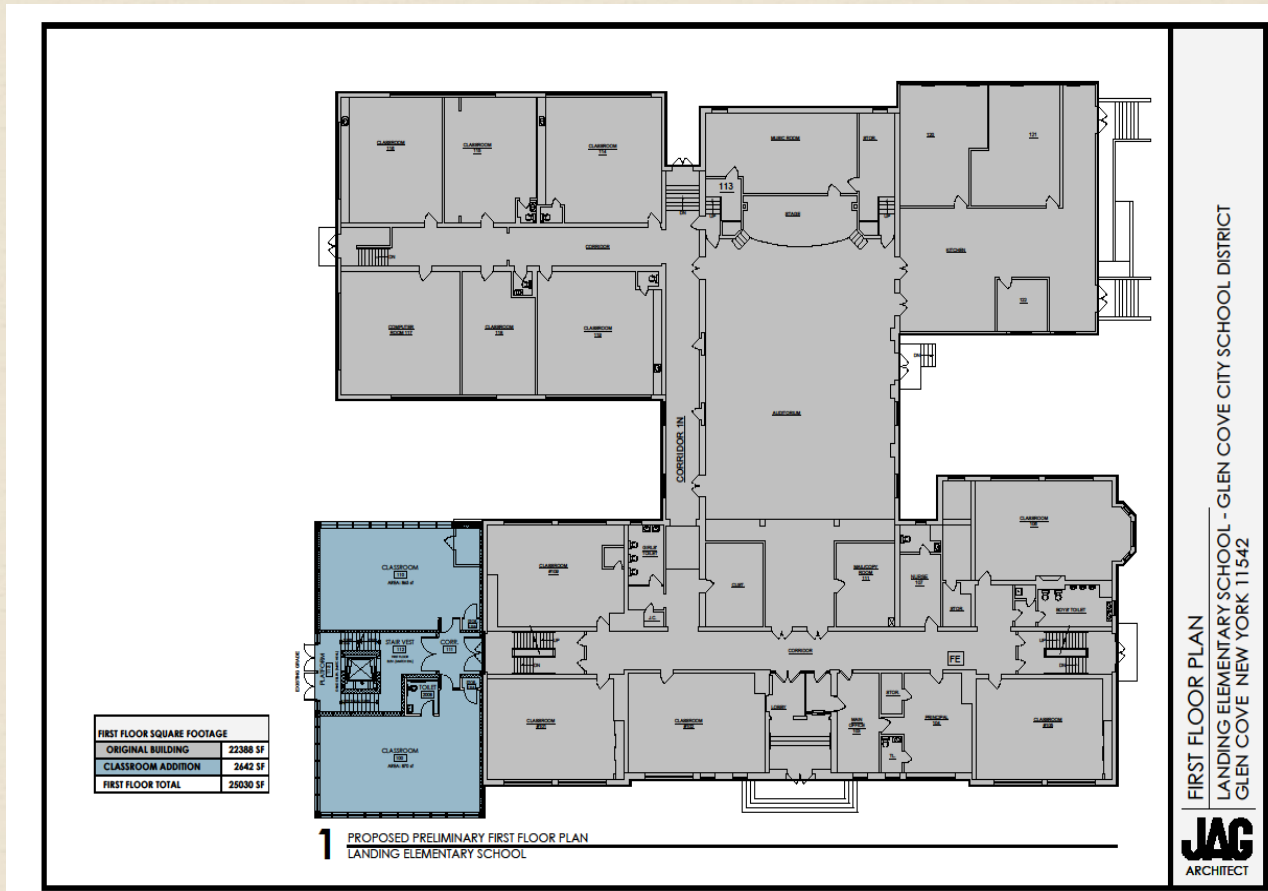
*Approve the transfer of \$7,500,000
from the District's Capital Reserve.*

The District received stimulus funds from the Coronavirus Response & Relief Supplemental Appropriation Act (CRRSA) and the American Rescue Plan (ARP). The District was approved to use these funds (\$2,988,229 & \$4,078,228) for additional instructional space and help the District be in compliance with ADA requirements. In order to accomplish this, the District needs to use the \$7,500,000 from its Capital Reserve.

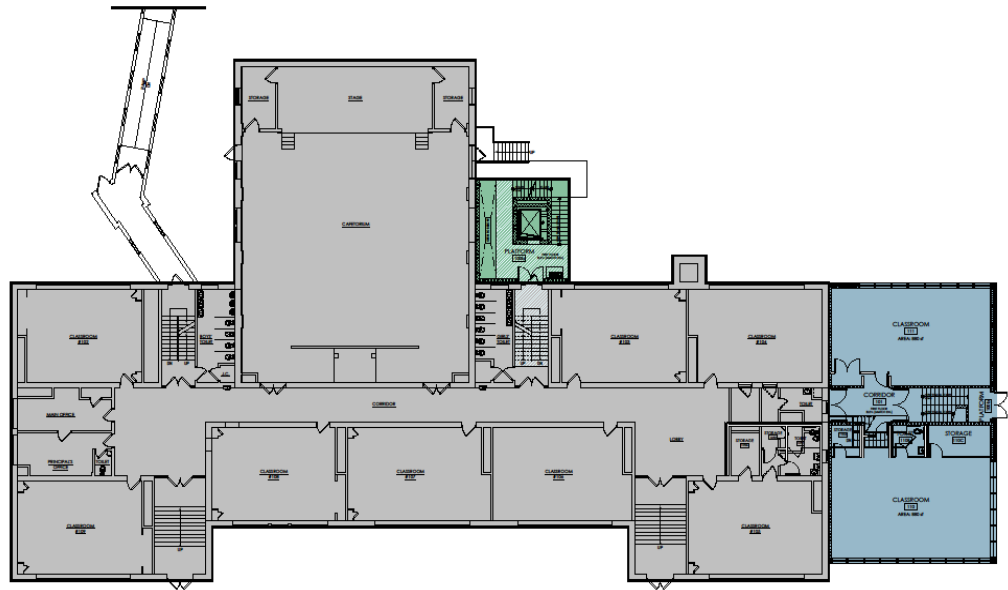
These funds are already in our Capital Reserve and can only be used for capital construction projects.

*These two projects will be done at
NO COST TO TAXPAYERS*

Landing Elementary Addition



Deasy Elementary Addition



1 PROPOSED PRELIMINARY FIRST FLOOR PLAN
DEASEY ELEMENTARY SCHOOL

FIRST FLOOR SQUARE FOOTAGE	
ORIGINAL BUILDING	15453 SF
ELEVATOR ADDITION	555 SF
CLASSROOM ADDITION	2638 SF
FIRST FLOOR TOTAL	18646 SF

FIRST FLOOR PLAN
DEASEY ELEMENTARY SCHOOL - GLEN COVE CITY SCHOOL DISTRICT
GLEN COVE NEW YORK 11542

JAG
ARCHITECT

Proposition III

Student representative as a member of the Board of Education.

Does not have any voting rights.

Can be at public meetings and hearings but not in executive sessions.

Must be a senior at the high school.

This will allow our students to have a voice in District discussions.