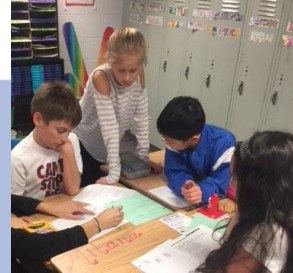




Bond Program Recommendation



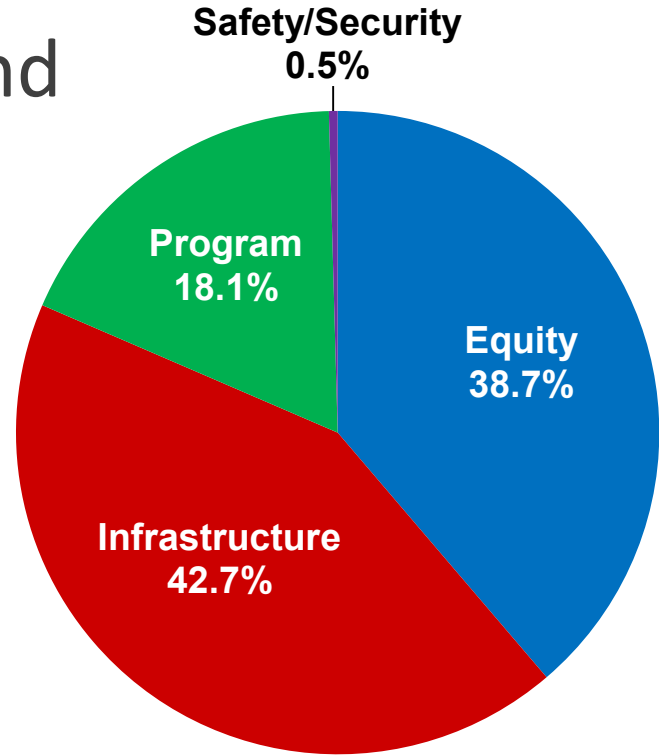
Board Presentation

December 20, 2018

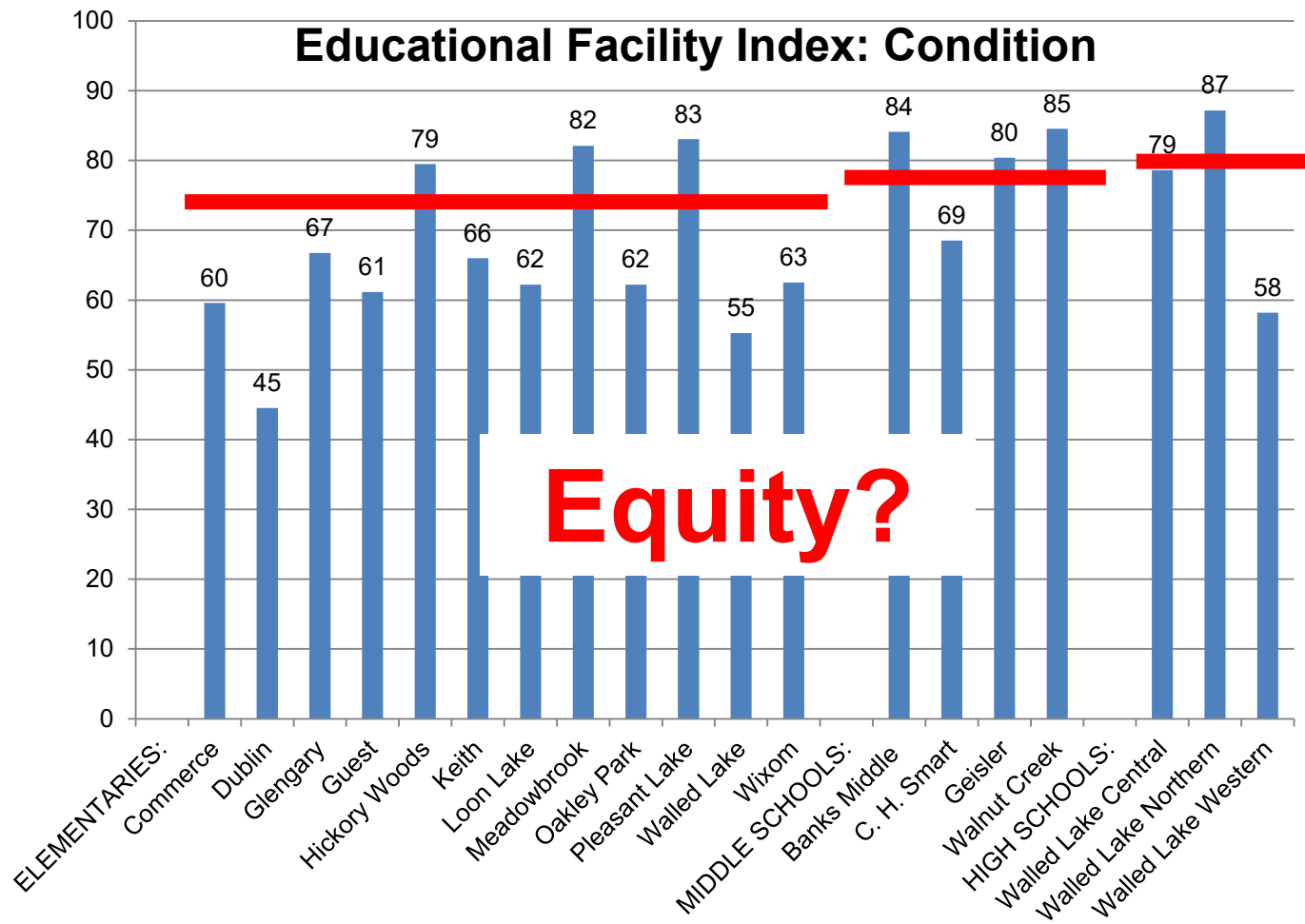


Bond 2019 - Key Areas of Focus

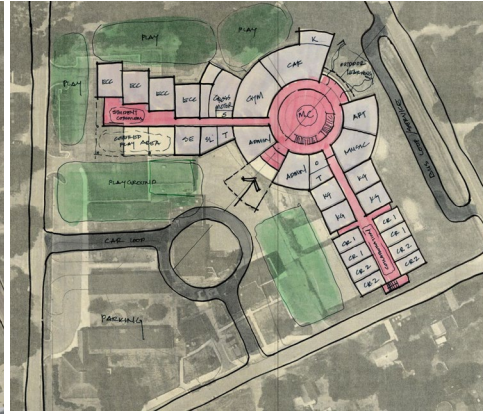
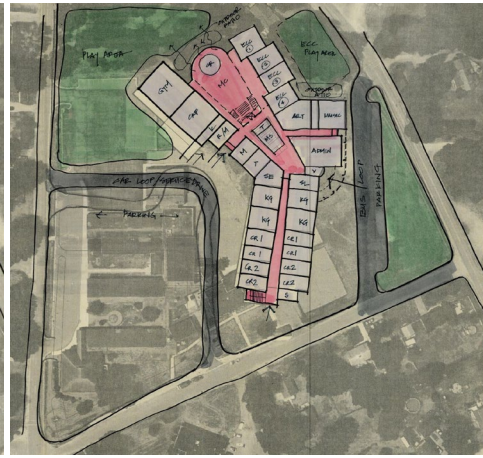
- Infrastructure Upgrades and Operational Efficiencies
- Equity across buildings
- Program Upgrades
- Safety and Security Enhancements



Equity

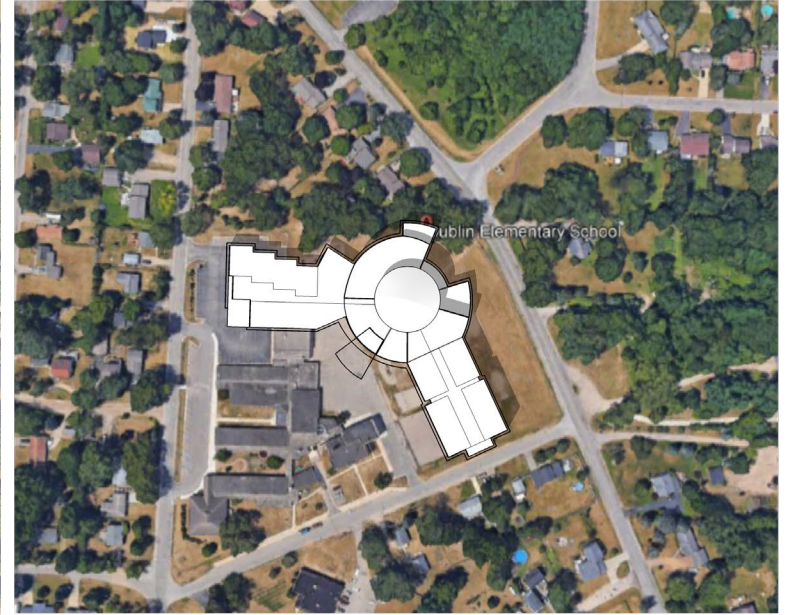


Equity



New Dublin Elementary School / Preliminary Concepts

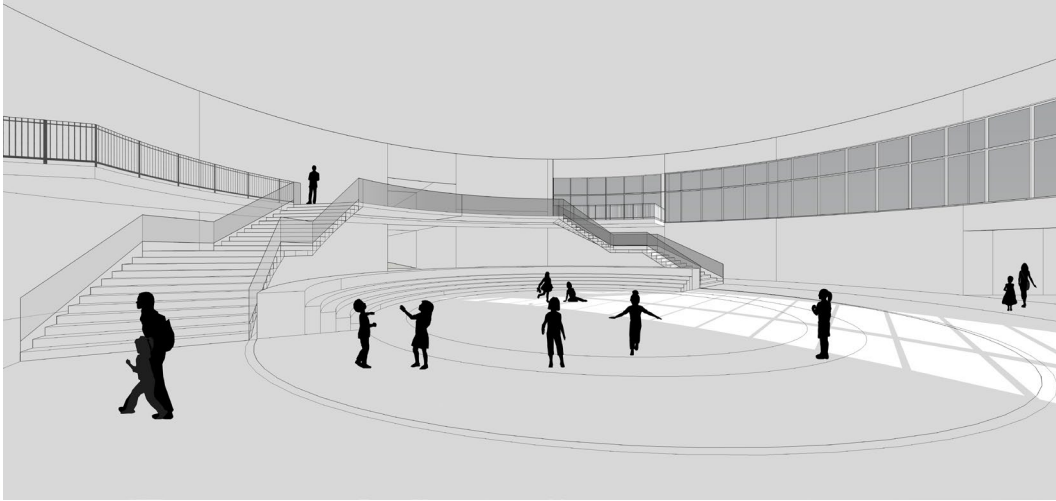
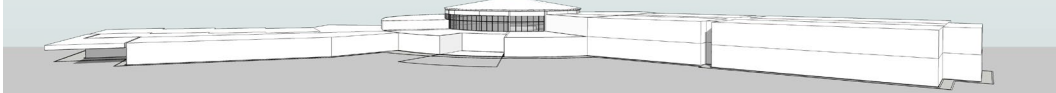
The aerial map shows the proposed site for the new elementary school. The site is bounded by S. 1st St. to the north, S. 2nd St. to the south, and S. 3rd St. to the east. The proposed building footprint is shown in red and orange, with a central circular area labeled "LARGE OPEN SPACE". The building is surrounded by green areas, including a "PLAY FIELD" to the west and a "PARKING" area to the south. The map also shows existing streets, including S. 1st St., S. 2nd St., and S. 3rd St., and surrounding residential areas.



New Dublin Elementary School / Preliminary Concept

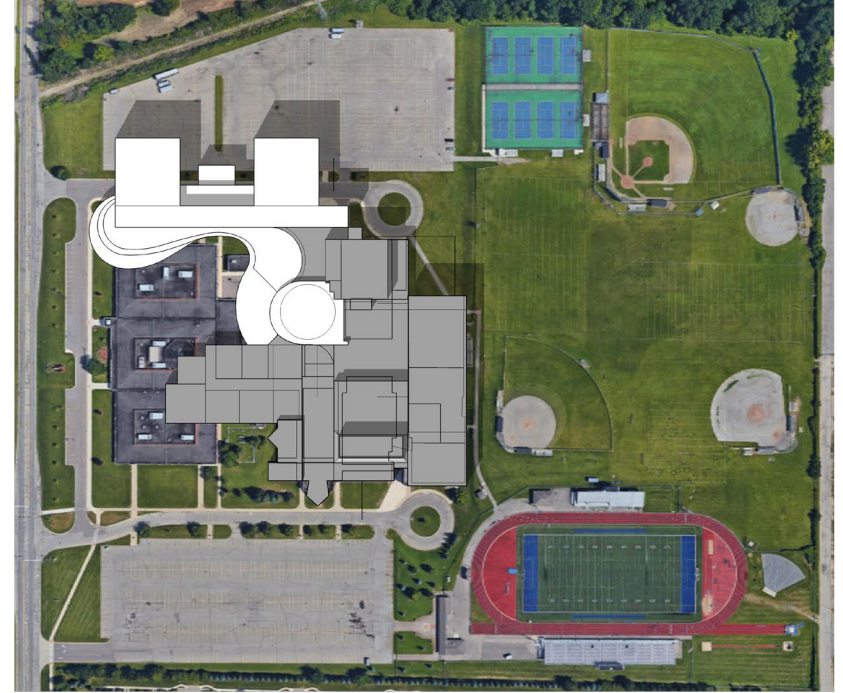
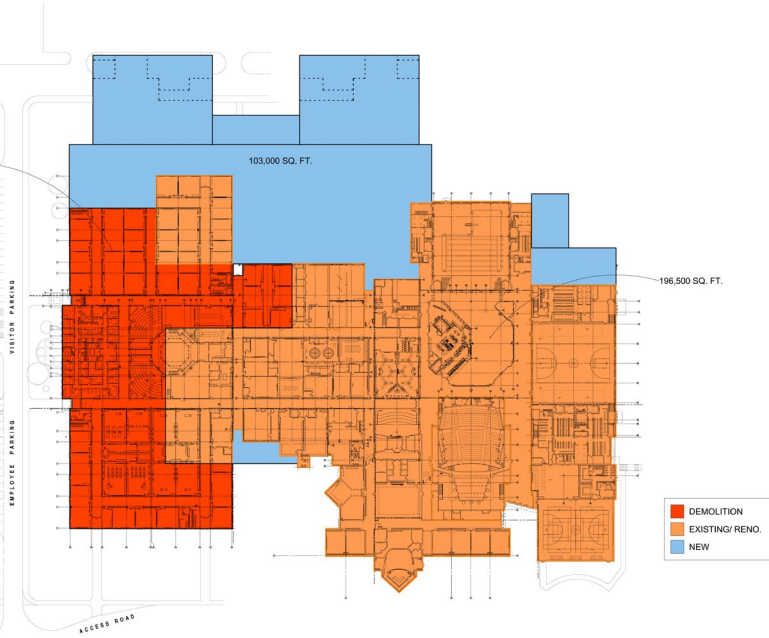


Equity



New Dublin Elementary School / Preliminary Concept

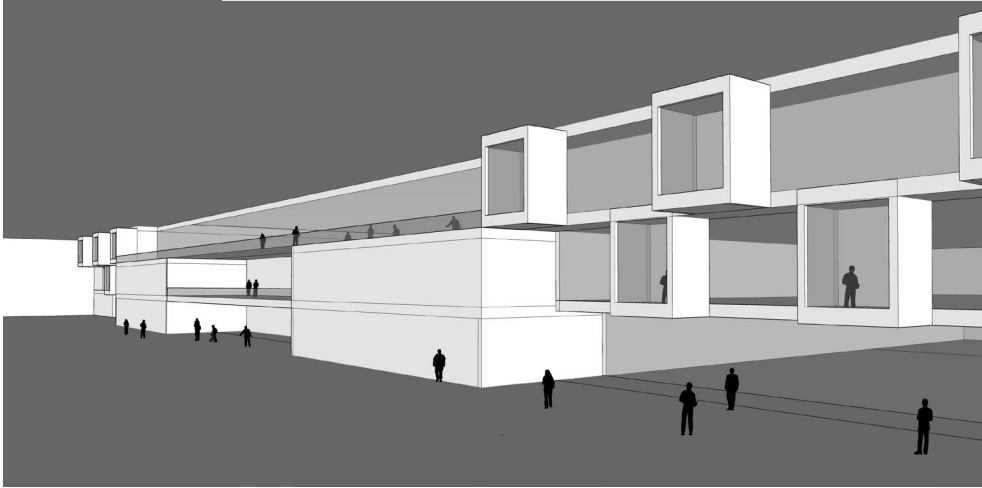
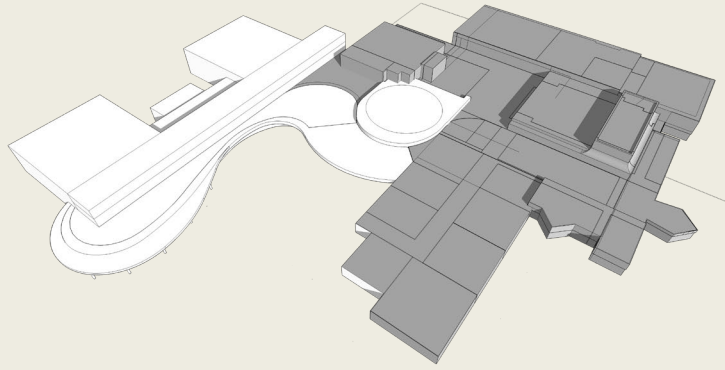
Equity



Western High School Major Renovation / Addition / Preliminary Concept

[illegible]

Equity



Western High School Major Renovation / Addition / Preliminary Concept





*Infrastructure Upgrades
across all Schools / Equity*

Commerce



- Exterior upgrades (windows, EIFS panels, roof)
- Interior upgrades (casework, restrooms)
- HVAC upgrades (boilers, AHU, exhaust fans)
- Electrical upgrades
- Site upgrades (playground, paving, LED lighting)
- Flexible/collaborative furniture for classrooms and media center
- Technology upgrades



Features of Bond Recommendation for Commerce Elementary



Glengary



- Exterior upgrades (windows, EIFS and metal panels, roof)
- Interior upgrades (casework, restrooms)
- HVAC upgrades (AHU, exhaust fans)
- Electrical upgrades
- Site upgrades (playground, paving, LED lighting, municipal water/sewer service)
- Flexible/collaborative furniture for classrooms and media center
- Technology upgrades



Features of Bond Recommendation for Glengary Elementary





- Exterior upgrades (EIFS and metal panels, windows, roof, canopy)
- Interior upgrades (casework, restrooms)
- HVAC upgrades (boilers, exhaust fans, AHU)
- Electrical upgrades
- Site upgrades (playground, paving, LED lighting)
- Flexible/collaborative furniture for classrooms and media center
- Technology upgrades



- Exterior upgrades (roof, soffits)
- Interior upgrades (casework, carpet)
- HVAC upgrades (energy management system, boilers, unit vents, exhaust fans)
- Electrical upgrades (emergency generator)
- Site upgrades (playground, paving, LED lighting)
- Flexible/collaborative furniture for classrooms and media center
- Technology upgrades

Keith



- Gym Addition
- Cafeteria remodeling
- Exterior upgrades (corridor walls, metal panels, windows, courtyard doors, roof)
- Interior upgrades (casework, tile, restrooms)
- HVAC upgrades (boilers, AHU, exhaust fans, fire suppression system at gym addition)
- Electrical upgrades (panels, outlets)
- Site upgrades (playground)
- Flexible/collaborative furniture for classrooms and media center
- Technology upgrades

Features of Bond Recommendation for Keith Elementary



Loon Lake



- Gym Addition
- Cafeteria remodeling
- Exterior upgrades (metal panels, windows, courtyard doors, roof)
- Interior upgrades (corridor walls, carpet/VCT, casework, restrooms)
- HVAC upgrades (boilers, exhaust fans, AHU, fire suppression system)
- Electrical upgrades (panels, outlets)
- Site upgrades (playground, paving, LED lighting)
- Flexible/collaborative furniture for classrooms and media center
- Technology upgrades

Features of Bond Recommendation for Loon Lake Elementary





- Exterior upgrades (roof, soffits)
- Interior upgrades (casework, restrooms, carpet/VCT)
- HVAC upgrades (boilers, exhaust fans)
- Electrical upgrades (outlets)
- Site upgrades (playground, LED lighting)
- Flexible/collaborative furniture for classrooms and media center
- Technology upgrades

Oakley Park



- Gym Addition
- Cafeteria remodeling
- Exterior upgrades (EIFS and metal panels, windows, exterior doors at courtyard, roof, wood soffit)
- Interior upgrades (corridor walls, carpet/VCT/tile, casework, restrooms)
- HVAC upgrades (boilers, AHU, exhaust fans, fire suppression system)
- Electrical upgrades (panels, outlets)
- Site upgrades (playground, paving, LED lighting)
- Flexible/collaborative furniture for classrooms and media center
- Technology upgrades

Features of Bond Recommendation for Oakley Park Elementary



Pleasant Lake



- Exterior upgrades (roof, soffits)
- Interior upgrades (casework, restrooms, carpet/VCT)
- HVAC upgrades (boilers, unit vents, exhaust fans)
- Electrical upgrades (outlets, emergency generator)
- Site upgrades (paving, playground, LED lighting)
- Flexible/collaborative furniture for classrooms and media center
- Technology upgrades



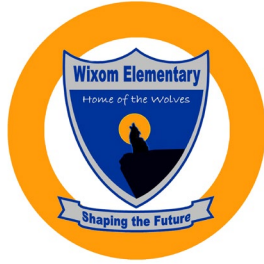
Features of Bond Recommendation for Pleasant Lake Elementary





- Cafeteria remodeling
- Exterior upgrades (windows, EIFS and metal panels)
- Interior upgrades (corridor walls, carpet/VCT/tile, casework, restrooms)
- HVAC upgrades (boilers, AHU, exhaust fans)
- Electrical upgrades (panels, outlets)
- Site upgrades (playground, paving, LED lighting)
- Flexible/collaborative furniture for classrooms and media center
- Technology upgrades





- Cafeteria remodeling
- Exterior upgrades (windows, EIFS and metal panels, wood soffit)
- Interior upgrades (corridor walls, casework, carpet/VCT/tile, restrooms)
- HVAC upgrades (boilers, AHU, exhaust fans)
- Electrical upgrades (panels, outlets)
- Site upgrades (playground, LED lighting)
- Flexible/collaborative furniture for classrooms and media center
- Technology upgrades



Sarah Banks MS



- Exterior upgrades (roof)
- Interior upgrades (music room, stage curtains & sound system, restrooms, locker room)
- HVAC upgrades (boilers, chillers, exhaust fans)
- Electrical upgrades (generator)
- Site upgrades (paving, LED lights)
- Flexible/collaborative furniture for classrooms and media center
- Technology upgrades



Features of Bond Recommendation for Sarah Banks Middle School



James Geisler MS



- Interior upgrades (music room, stage curtains & sound system, restrooms, locker room equipment, VCT, casework)
- HVAC upgrades (faucets, boilers, chillers, exhaust fans, univents)
- Electrical upgrades (generator)
- Site upgrades (paving, LED lights)
- Flexible/collaborative furniture for classrooms and media center
- Technology upgrades



Features of Bond Recommendation for James Geisler Middle School



C. H. Smart MS



- Exterior upgrades (roof, EIFS siding, exterior doors at courtyards, windows)
- Interior upgrades (music room, stage curtains & sound system, corridor walls, restrooms, locker room, carpet / VCT, casework)
- Electrical upgrades (panel, generator)
- HVAC upgrades (faucets, exhaust fans, univents)
- Site upgrades (paving, LED lights)
- Flexible/collaborative furniture for classrooms and media center
- Technology upgrades



Features of Bond Recommendation for C. H. Smart Middle School



Walnut Creek MS



- Exterior upgrades (roof)
- Interior upgrades (music room, stage curtains & sound system, restrooms, locker room equipment)
- HVAC upgrades (energy management, faucets, boilers, chillers, exhaust fans)
- Electrical upgrades (emergency generator)
- Site upgrades (paving, LED lights)
- Flexible/collaborative furniture for classrooms and media center
- Technology upgrades

Features of Bond Recommendation for Walnut Creek Middle School





- Exterior upgrades (roof, EIFS siding, windows)
- Interior upgrades (acoustic panels, corridor wall, carpet/VCT, locker room, auditorium and natatorium)
- HVAC upgrades (AC in gym, pool pak unit, exhaust, pool filtration)
- Electrical upgrades (emergency generator)
- Site upgrades (paving, drainage, LED lighting)
- New Team Room Building
- Flexible/collaborative furniture for classrooms and media center
- Technology upgrades

Features of Bond Recommendation for Walled Lake Central High School



- Exterior upgrades (windows)
- Interior upgrades (carpet/VCT, locker room, auditorium and natatorium)
- HVAC upgrades (energy management system, pool filtration, chillers, AC in gym)
- Electrical upgrades (emergency generator)
- Site upgrades (paving, drainage, LED lighting)
- New Team Room Building
- Flexible/collaborative furniture for classrooms and media center
- Technology upgrades



Outdoor Education



- Exterior upgrades (walls, windows, roof)
- HVAC upgrades (water softener, boilers, AHU, exhaust fans)
- Electrical upgrades (generator, electrical distribution panels)
- Site upgrades (paving, drainage, LED lighting)
- Flexible/collaborative furniture
- Technology upgrades



Features of Bond Recommendation for Outdoor Education Center



Operations Bldg.



- Exterior upgrades (windows)
- HVAC upgrades (boilers, AHU, exhaust fans)
- Site upgrades (LED lighting, paving)
- Technology upgrades



Features of Bond Recommendation for Operations Building



Twin Sun



- Interior upgrades (casework, restroom)
- HVAC upgrades (boilers, AHU, exhaust fans)
- Site upgrades (playground equipment, LED lighting, paving)
- Technology upgrades



Education Service Ctr.



- Exterior upgrades (walls, windows, roof)
- Interior upgrades (restroom)
- HVAC upgrades (exhaust fans)
- Electrical upgrades (electrical service, electrical distribution panels)
- Site upgrades (LED lighting, paving)
- Technology upgrades



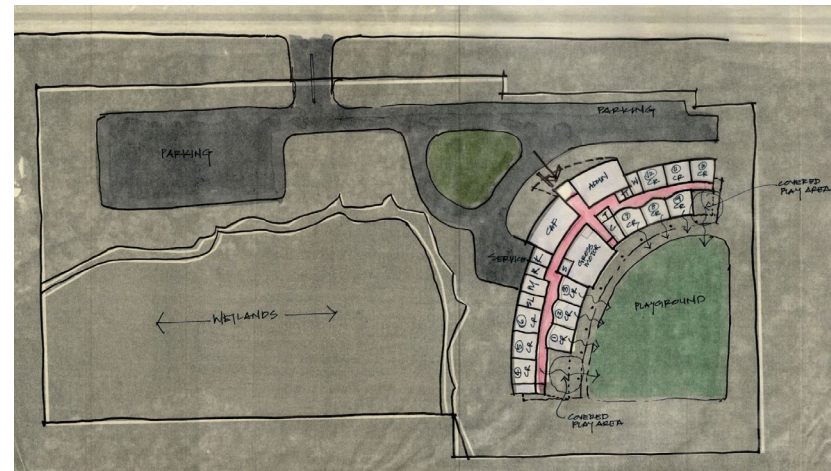
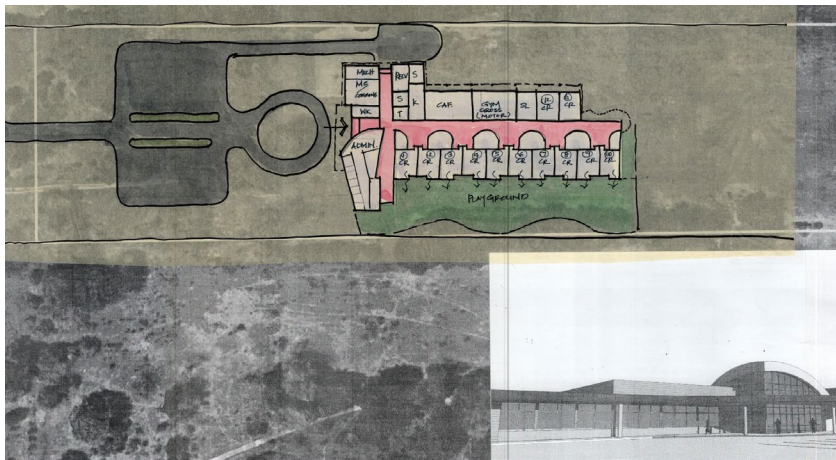
Features of Bond Recommendation for Education Service Center



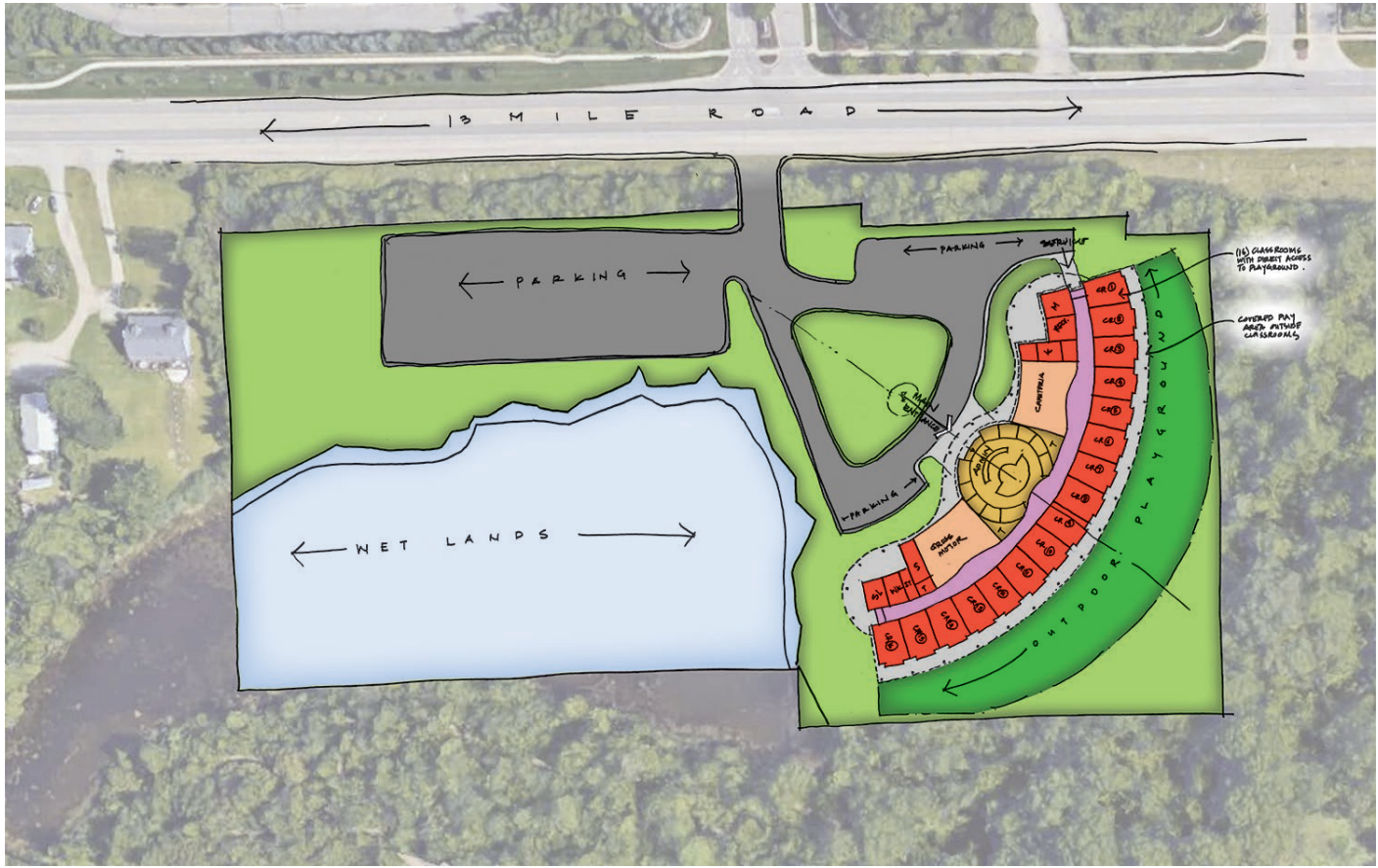


Program Enhancements

Program

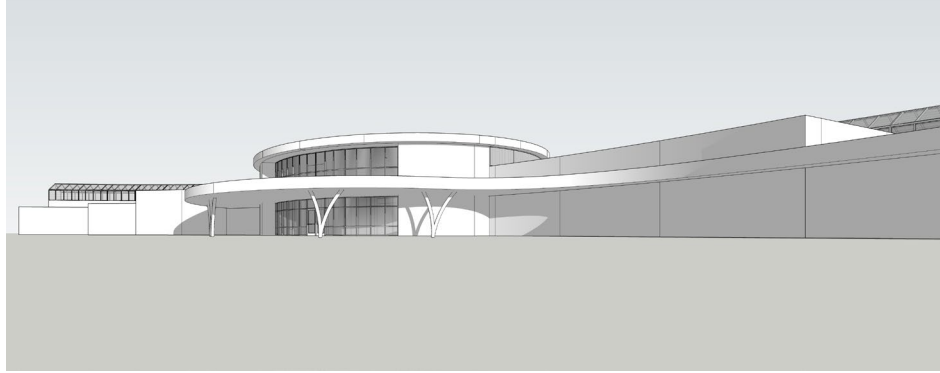


Program



Early Childhood Center / 13 MILE ROAD / Preliminary Concept

Program



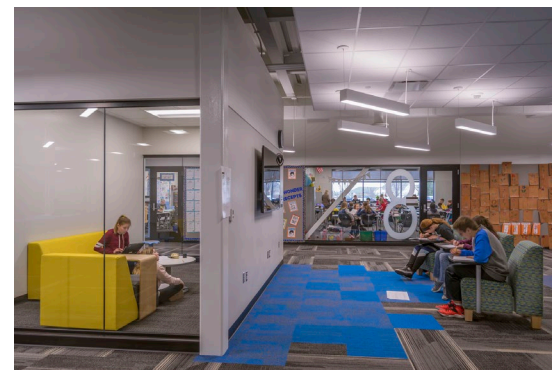
Early Childhood Center /13 MILE ROAD / Preliminary Concept



Focus on Young Learners



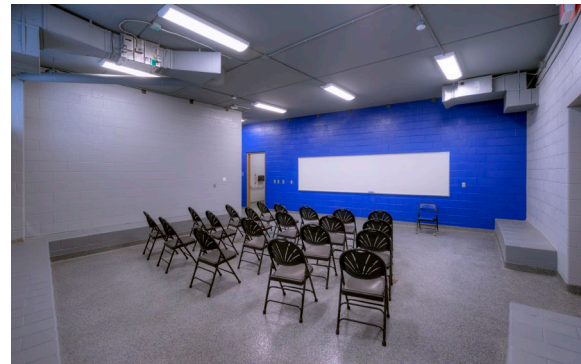
Flexible / Collaborative Furniture



Team Rooms at High Schools



Example of Team Room / Concessions



Safety/Security

- Emergency Connectivity
- Surveillance Cameras
- Enhance Entry Control



Technology Upgrades

- Gym audio
- LCD displays at each building
- Servers
- Refreshing instructional technology and audio visual cabling
- Data networking
- Additional card readers at each building
- Additional ID cards
- Telephone system and licensing
- Paging and audio systems
- Digital clocks
- Cafeteria audio
- IP video distribution
- Video security system upgrades
- Access control system and intrusion detection
- Cabling
- Data center reconfiguration





Bond Program Financials

Current Debt Information

November 2018

Bond	Current Balance	Expiration
2011 Refunding Bond	\$ 19,670,000	2022
2012 Refunding Bond	590,000	2019
2013 Bond	63,935,000	2043
2015 Refunding Bond	19,100,000	2022
2016 Refunding Bond	8,675,000	2024

Current Debt Millage Rate = 4.5279



Debt Millage Comparisons

District	Total Debt Millage
West Bloomfield	6.8500
South Lyon	8.0000
Huron Valley	7.0000
Novi	7.0000
Waterford	7.0000
Walled Lake	4.5279
Farmington	3.3000



Funding Opportunity

- Within five years:
 - Four of five debt obligations will be paid off
 - Debt outstanding will be approximately 50% of current balance and payments will be 73% less
- Provides window of opportunity to sell bonds while still providing a tax decrease to our community



Impact on Debt Millage Rate

- Refunding of prior bonds
- Structure of 2014 bonds
- Stable and growing taxable values

The combination allows for additional debt while providing a tax decrease.



Bond 2019.....





Questions and Answers

