

Rossville Consolidated School Corporation
Administrative Office Building



A close-up of the front entrance.



The view from southwest.

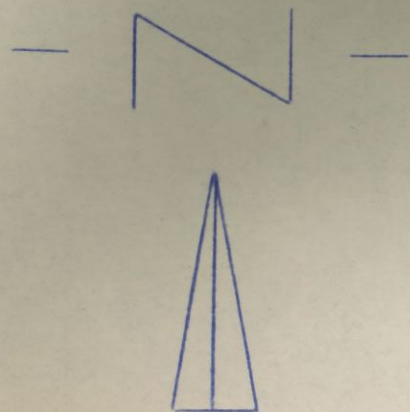
Rossville Consolidated School Corporation
Administrative Office Building



The north wall showing the condensor unit.



A view of the east wall.

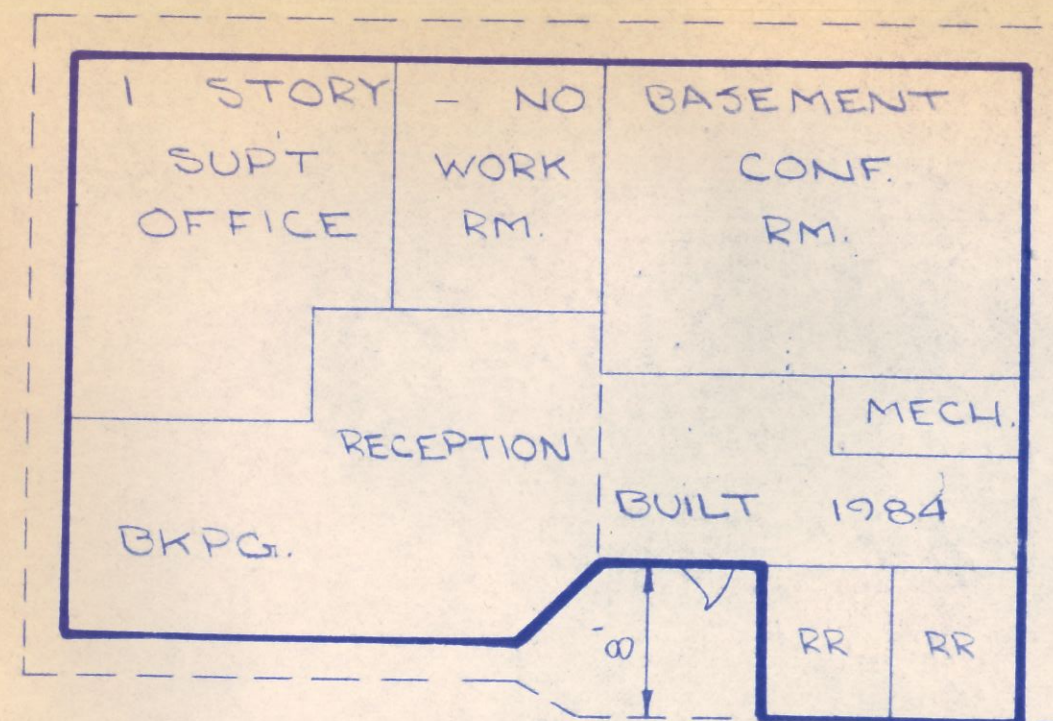


50'-9"

2' OVERHANG

30'-9"

2' OVERHANG



24'-1" 4" 9'-2" 13'-5"

Rossville Consolidated School Corporation
Vocational - AG Building



The class room and office section from northeast.



The north wall from northeast.

Rossville Consolidated School Corporation
Vocational - AG Building



The west wall showing the overhead door.



The south wall from southeast.

N



88'-5"

14' x 16'
O.H. DOOR

1 STORY

BUILT 1967

5' GABLE ROOF

SHOP

VEST

CLASSROOM

RR

LAB

STORAGE

2
FURN

OFFICE

42'-3"

ROSSVILLE CONSOLIDATED SCHOOL DISTRICT
Vocational Agriculture Building Addition
Rossville, Indiana



South wall of the addition.



West wall of addition
from southwest corner.

ROSSVILLE CONSOLIDATED SCHOOL DISTRICT
Vocational Agriculture Building Addition
Rossville, Indiana



East wall of addition.

14' x 16' O.H. DOOR

5' GABLE ROOF

88'-5"

1 STORY
BUILT - 1967

VEST.

CLASSROOM

42'-3"

SHOP AREA

R.R.

LAB

7'-8" x 7'-10" SLIDING DOOR

STORAGE

FURN.

OFFICE

ROOF:
GABLE ROOF W/ WOOD JOISTS
& DECK W/ AN ASPHALT
SHINGLE ROOF COVER.

WALLS:
12" TALL CONCRETE
BLOCK W/ ALUMINUM
SIDING FINISH.

1 STORY
1991 ADDITION

WORKSHOP AREA

106'-9"

12' x 12' O.H. DOOR

WALLBOARD PARTITION WALL

64'-6"

GARAGE AREA

9' x 12' O.H. DOOR

ROSSVILLE CONSOLIDATED SCHOOL DISTRICT
Junior/Senior High School & Elementary School



The east wall of science and home economics.



The old gymnasium from southeast.

ROSSVILLE CONSOLIDATED SCHOOL DISTRICT
Junior/Senior High School & Elementary School



The old gymnasium from northeast.



The east wall of classroom Area D.

ROSSVILLE CONSOLIDATED SCHOOL DISTRICT
Junior/Senior High School & Elementary School



The classroom Area C from southeast.



The east wall of the multi-purpose room.

ROSSVILLE CONSOLIDATED SCHOOL DISTRICT
Junior/Senior High School & Elementary School



Classroom Area C from northeast.



From northeast, classroom Areas A and B.

ROSSVILLE CONSOLIDATED SCHOOL DISTRICT
Junior/Senior High School & Elementary School



The north wall of Area A.



From northwest, classroom Areas A & B.

ROSSVILLE CONSOLIDATED SCHOOL DISTRICT
Junior/Senior High School & Elementary School



Kindergarten from northwest.



The multi-purpose room from southwest.

ROSSVILLE CONSOLIDATED SCHOOL DISTRICT
Junior/Senior High School & Elementary School



The kitchen and maintenance from southwest.



The lobby and main west entrance.

ROSSVILLE CONSOLIDATED SCHOOL DISTRICT
Junior/Senior High School & Elementary School



The new gymnasium from northwest.



The new gymnasium from southwest.

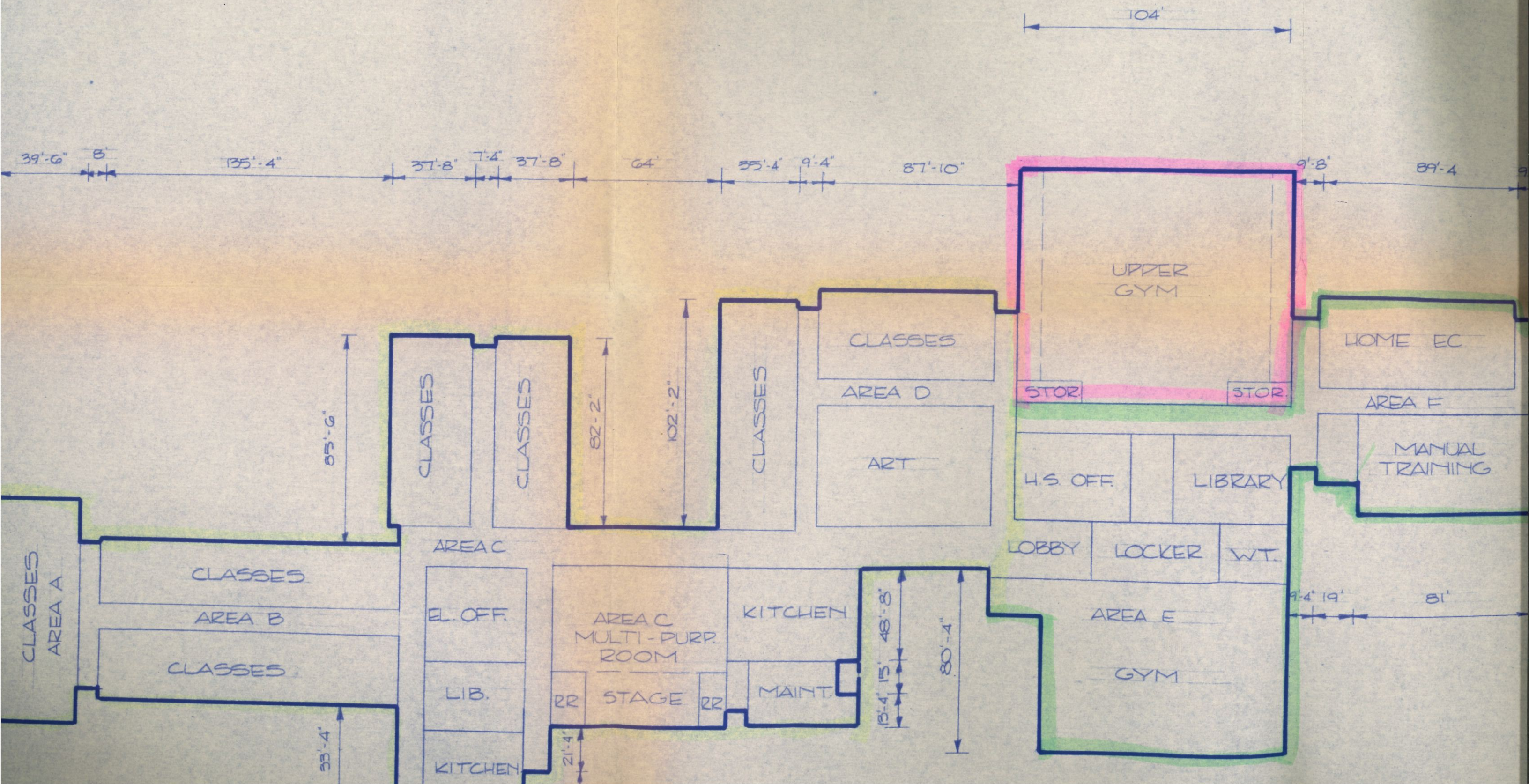
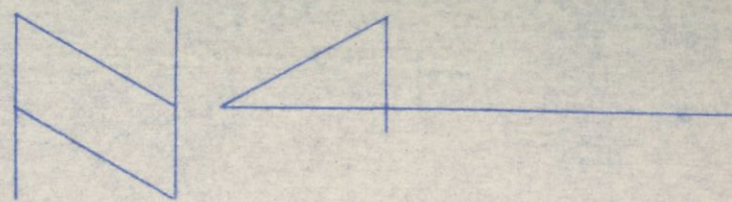
ROSSVILLE CONSOLIDATED SCHOOL DISTRICT
Junior/Senior High School & Elementary School

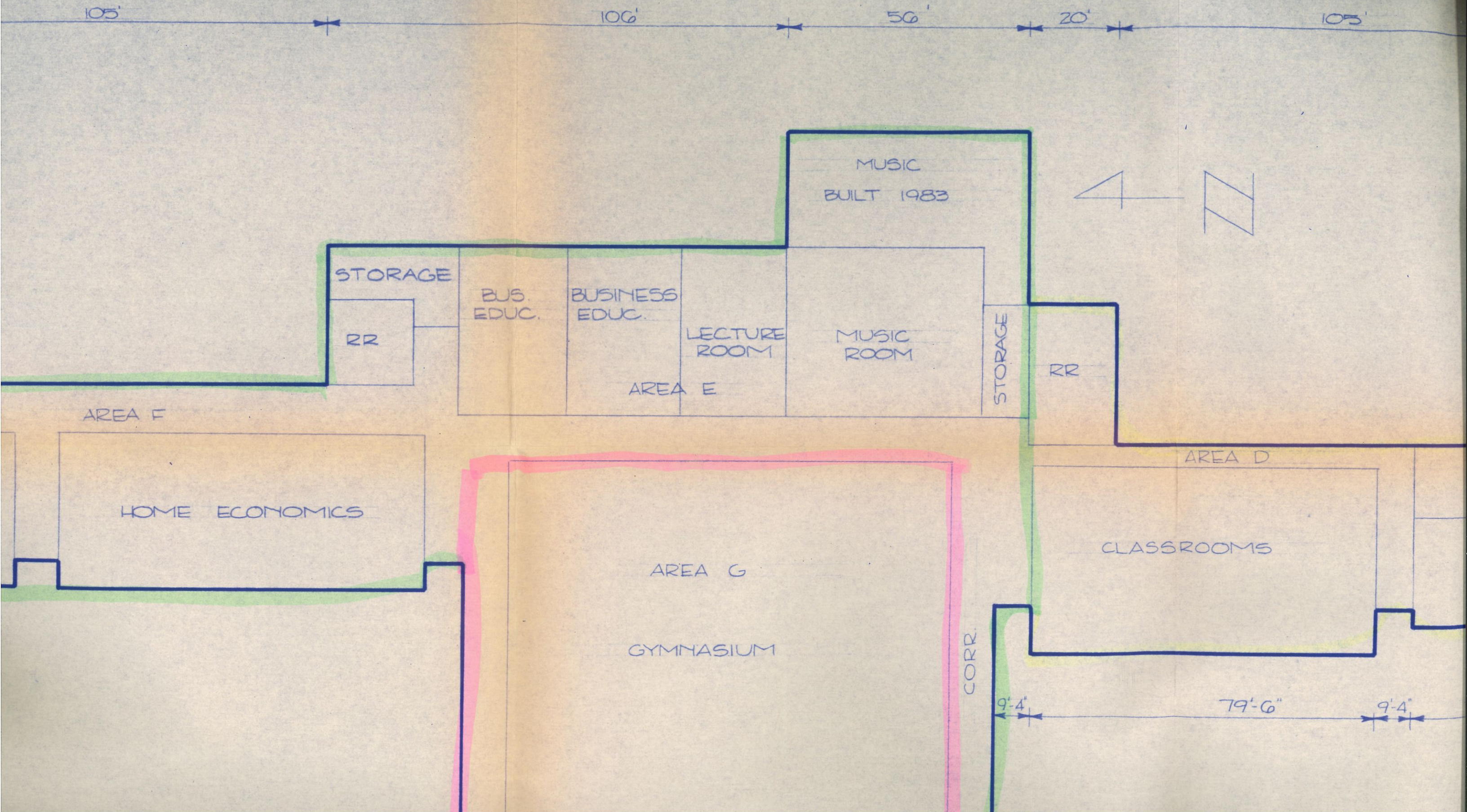


Manual training from southwest.



The south wall of manual training.





ROSSVILLE CONSOLIDATED SCHOOL DISTRICT
Storage Garage
Rossville, Indiana



North wall.



West wall from northwest corner.

ROSSVILLE CONSOLIDATED SCHOOL DISTRICT
Storage Garage
Rossville, Indiana



South wall.



East wall from southeast corner.