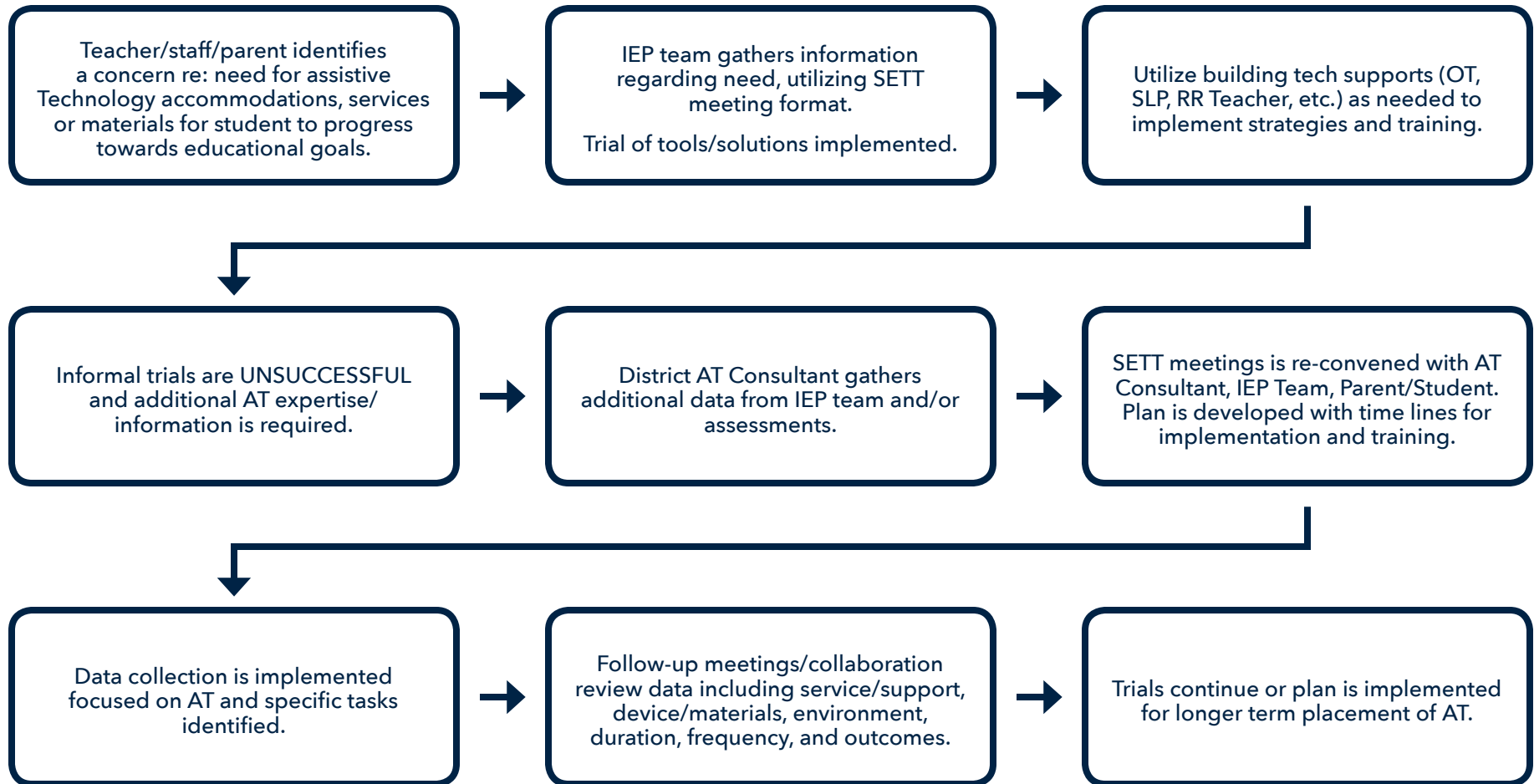


AT Decision Making & Referral Process



An Assistive Technology assessment and/or SETT Framework Meeting is not a formal evaluation or determining factor for student eligibility or special education services. It is an ongoing process for making decisions regarding the student's need for specific assistive technology to access FAPE or make progress on goals/objectives. Therefore, a REED or signed consent is not required, unless requested specifically by the district or parent.