

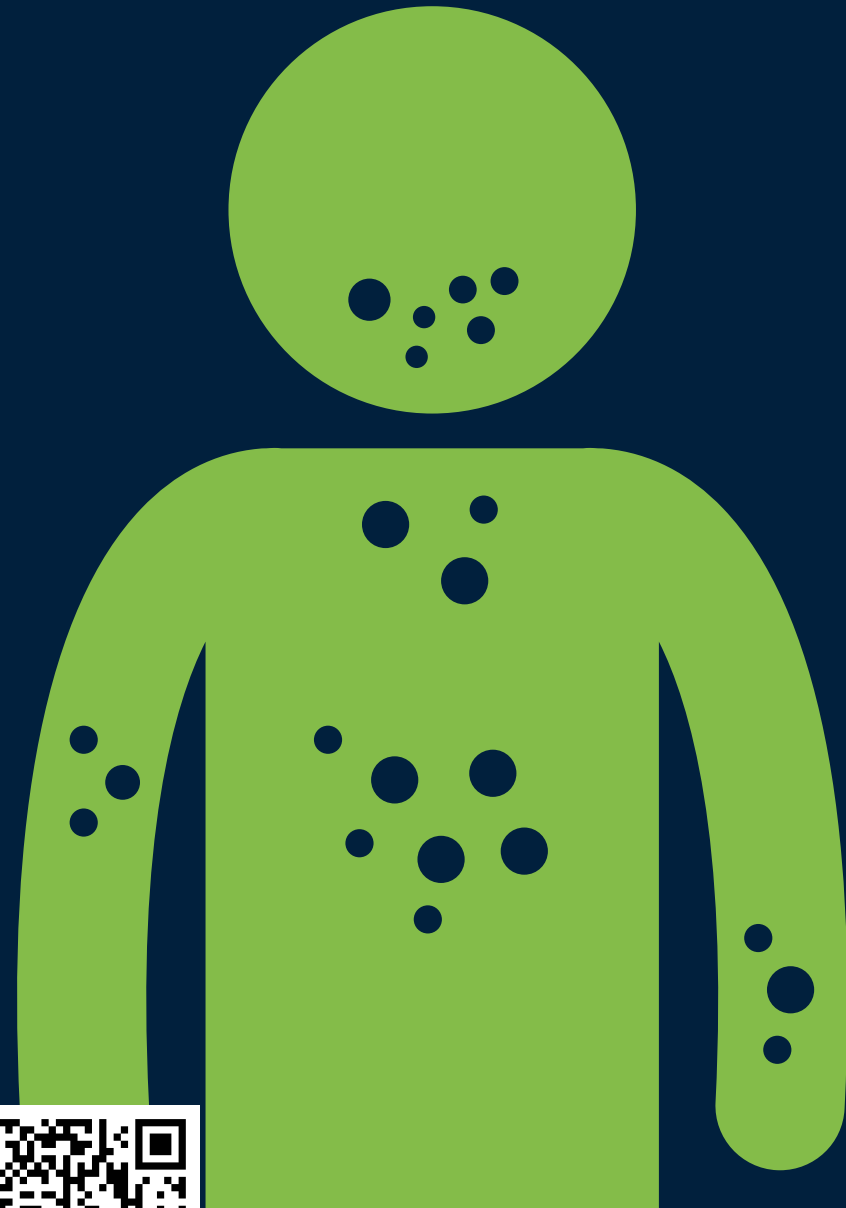
SYMPTOMS OF MEASLES

Main Symptoms:

- High Fever
(May spike to 104 F)
- Rash

Additional Symptoms:

- Cough
- Runny nose
- Red watery eyes



For More Information Visit:
<https://www.chfs.ky.gov/agencies/dph/dehp/idb/Pages/measles.aspx>

Protect your child from **MEASLES**



Kentucky Public Health
Prevent. Promote. Protect.



First dose starts at 12 months!

Give your child the best protection against measles with two doses of measles-mumps-rubella (MMR) vaccine.



To find out more visit:
<https://www.cdc.gov/measles/index.html>





MEASLES IS A VACCINE PREVENTABLE DISEASE!

The MMR vaccine provides safe, long lasting protection against measles.

Most individuals recieved the MMR vaccine as a child.

If you have questions about vaccines, talk to your healthcare provider.



LEARN MORE:

<https://www.cdc.gov/vaccines/vpd/mmr/public/>



Kentucky Public Health
Prevent. Promote. Protect.