



TCHS Science Olympiad

District Board Meeting

An abstract graphic on the left side of the slide. It features a central orange circle with the white number '01' inside. This circle is connected by a thick orange line to a larger dark grey circle on the left, which contains a smaller orange circle. Various other organic, teardrop-like shapes in shades of teal, olive green, and white are scattered around the central elements. A small white dot is also visible to the right of the central orange circle.

01

Run-Down

What is SciOly?

What is SciOly?

01

National Tournament

TCHS competes every year, putting forth one of the 17 brightest individuals in the district.

02

23 Events

From biology, chemistry, earth and space science, physics to engineering, students compete in 23 unique events, often with partners.

03

Competitions

On average, TC competes in around 3 invites + regionals and states each year.



02

EVENTS

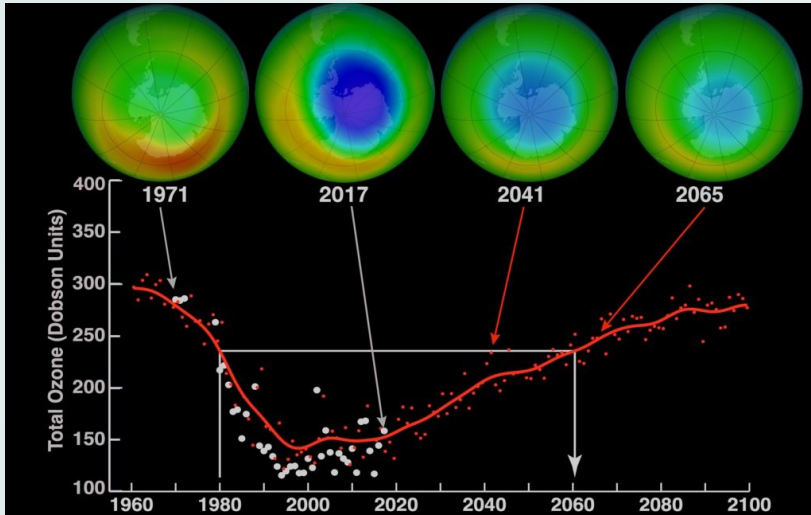
Let's go deeper!



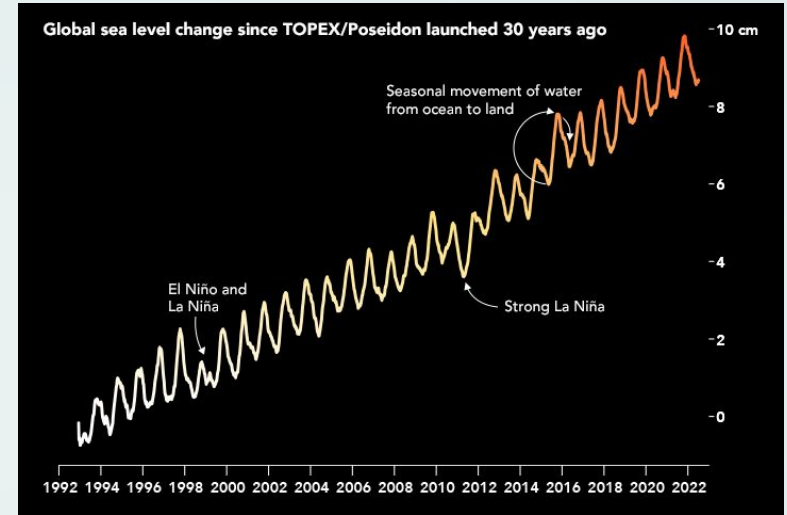
Flight



Remote Sensing



Antarctic ozone recovery after the Montreal protocol.



Global sea level change recorded by satellites TOPEX-Poseidon, Jason-1, Jason-2, and Jason-3.

Competitions



BirdSO

As one of the largest national invitationals SciOly offers, Birdso was hosted at none other than TCHS this year! We were able to represent our school through placing 6th out of 77 teams from across the nation.





GGSO

Keeping with the theme of “firsts”, this was also the first year TC competed out-of-state. The nationally prestigious Golden Gate Invitational hosted by Berkeley and Stanford allowed us to compete with the nation’s best teams, where we earned 5th place out of 53 teams.

Regionals

After 3 long years, the regional tournament was finally back in-person! TC competed and managed to place 3rd out of 58 teams across the region, qualifying our school for the state competition in April 8th at Caltech.



3rd

An abstract graphic design featuring organic, flowing shapes in orange, olive green, and dark grey. A central dark grey shape contains a light green circle with the number '04' in white. Other shapes include a large orange shape with a light green circle, a white shape with a green and blue circle, and a dark grey shape with a light green circle. There are also several small circles in orange, green, and dark grey scattered around.

04

Commitment

Involvement with Emperor SciOly





Practice Schedule

01

Mondays and Thursdays

3:30 - 4:30 pm

02

Saturday Night

7:00 - 10:00 pm

03

Cram Sessions

3:30 - 10:00 pm

04

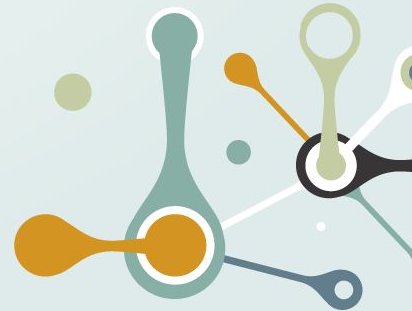
Gym Nights

9:00 - 11:00 pm

05

Outside Hours

Members often commit time
outside of practices to study
and work on builds



The background is a light blue-grey color. It features several abstract geometric elements: thick lines in orange, teal, and white that connect circular nodes. Some nodes are solid-colored (orange, teal, or black), while others are white with a colored center. There are also numerous small, solid-colored circles (black, white, teal, orange) scattered across the background, some of which appear to be part of the larger network structure.

Thank You!