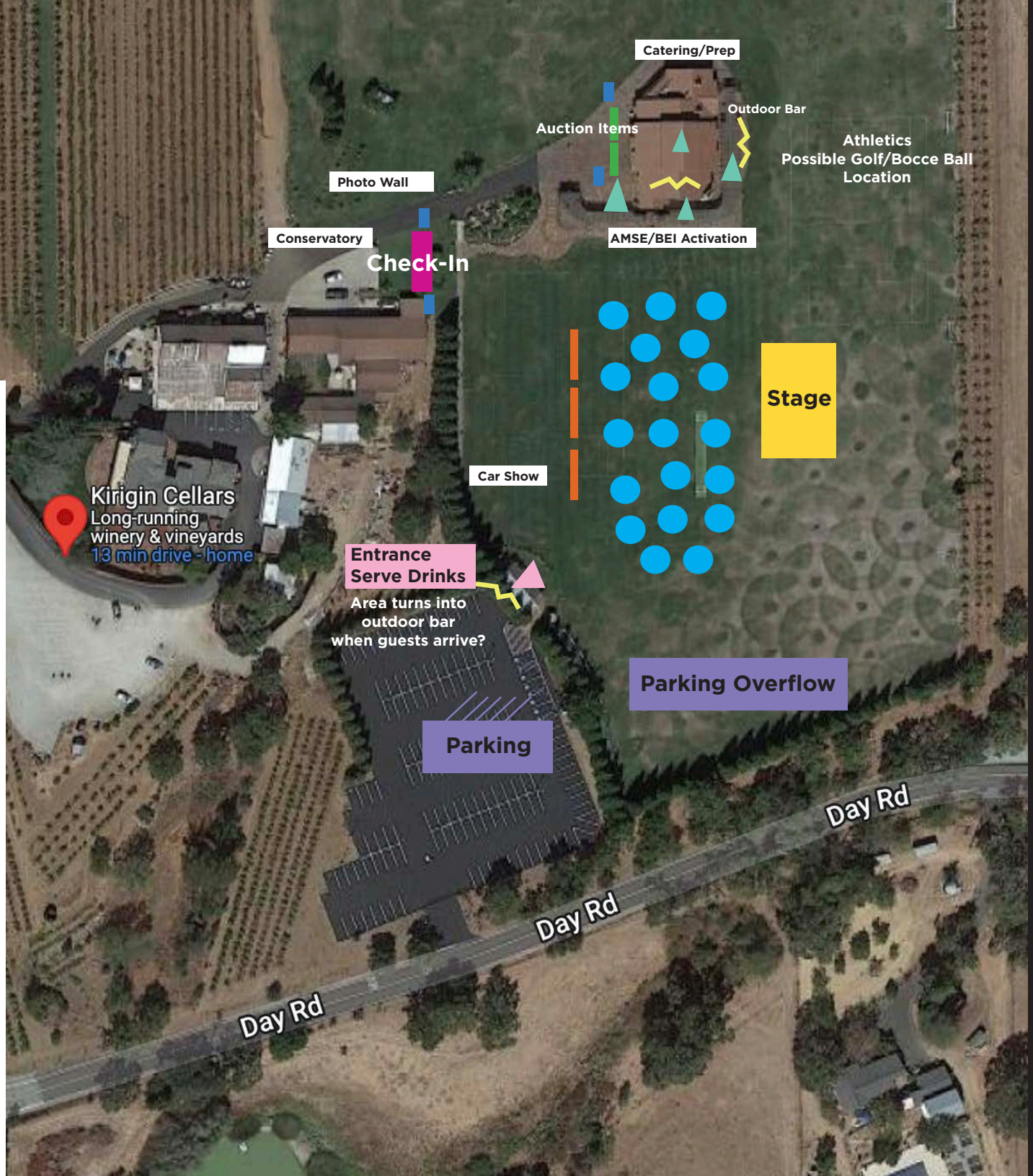


VCS

Quest Ball
Signage
Deliverables
v2 03.28.22

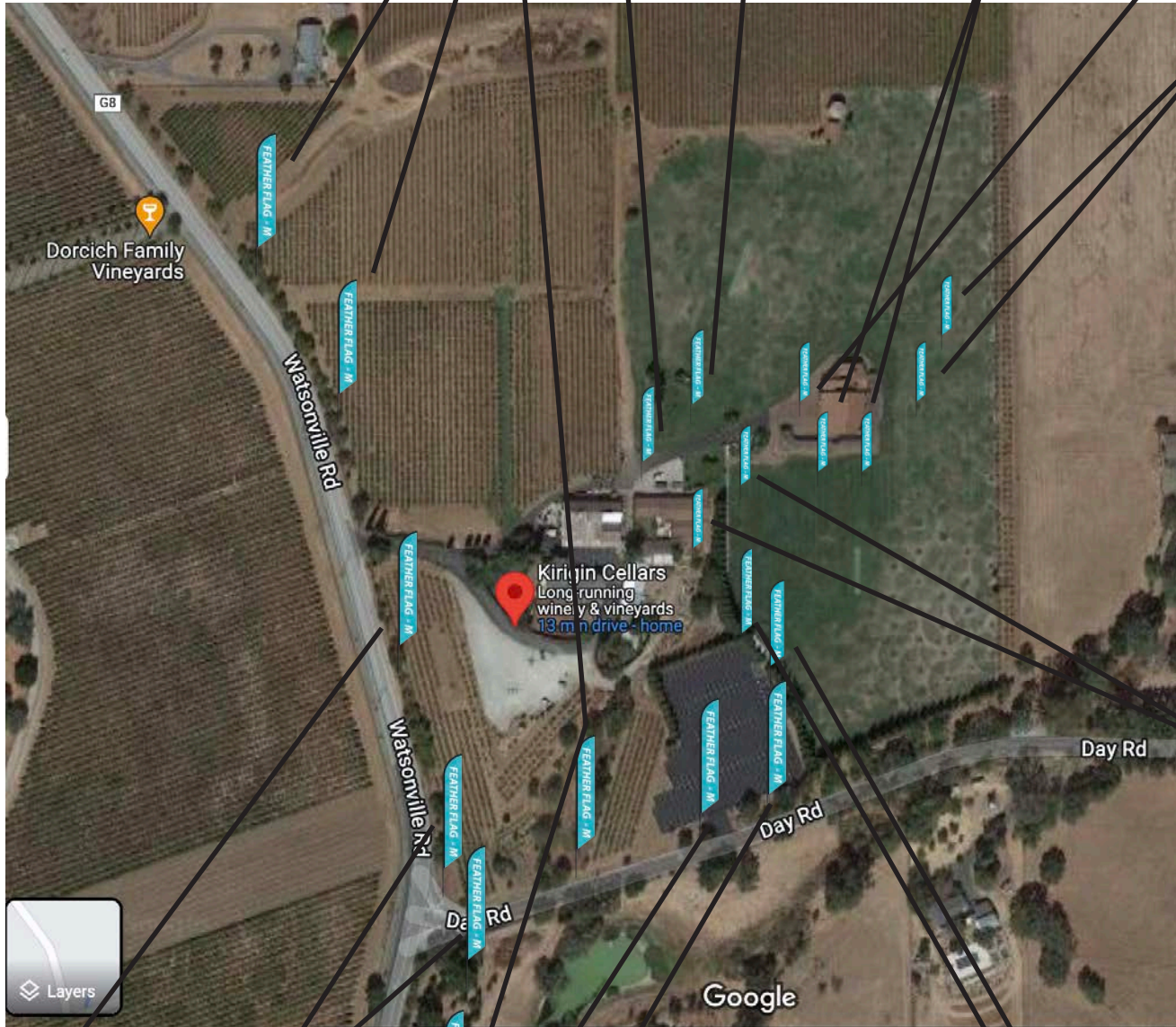
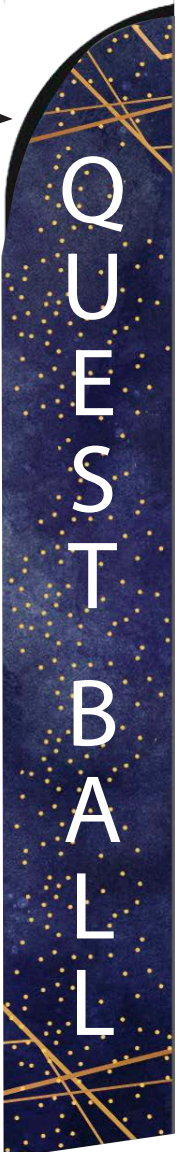
MAP KEY

-  Stage
-  Serving Tables
-  Entrance/Drinks
-  Parking
-  Check-In Options
-  Dinner Tables
-  Auction Items
Can be both Silent & Live Items
the actual 8.5x11 sleeves
can indicate if it's silent or live
-  Restroom Signs
-  Bid Pal Mobile Sign
-  Bar



Falcon Flags

Look and Feel for all



Auction Items
(with base on concrete floor)

Athletics
Golf
QUANTITY

- 2 Check-In
- 4 Quest Ball
- 2 Next Exit
- 2 Turn Here
- 2 Entrance
- 2 Welcome
- 2 Auction
- 1 Conservatory
- 1 Athletics
- 2 Photos
- 1 Golf
- 1 AMSE
- 1 BEI

Check-In

Next Exit

Turn Here

Entrance

Welcome

Quest Ball

Falcon Flags

Qty 3



Qty 4



Qty 2



Qty 2



Qty 2



Qty 2



Qty 2



Qty 1



Qty 1



Qty 2



Qty 1



Qty 1



Qty 1



Check-In Banners

Check-In Banner

Hang over trellis with A-Z sections

— Yellow marks indicate where tables could go between each trellis pole (4 tables)



Check-In Banners



70x20



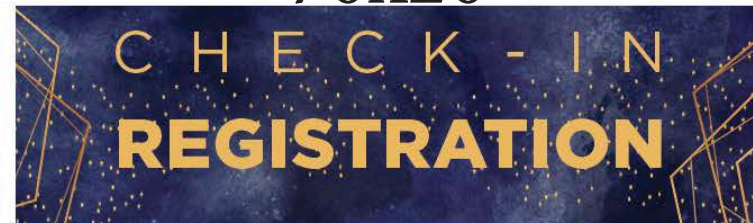
80x20



80x20

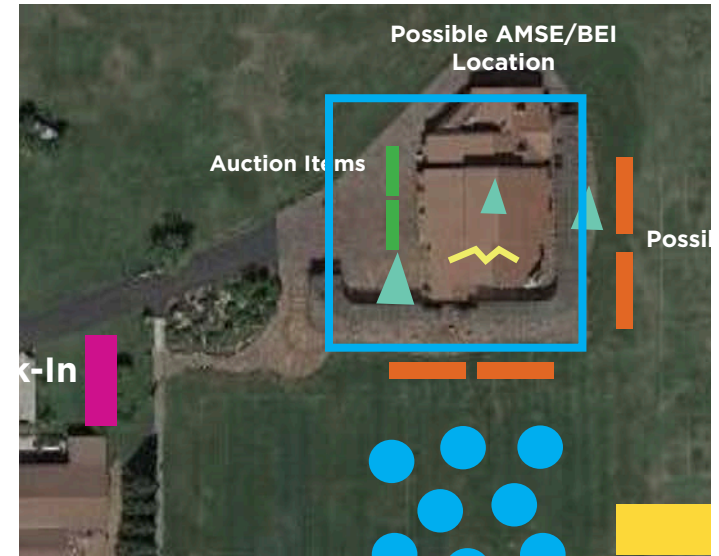


70x20



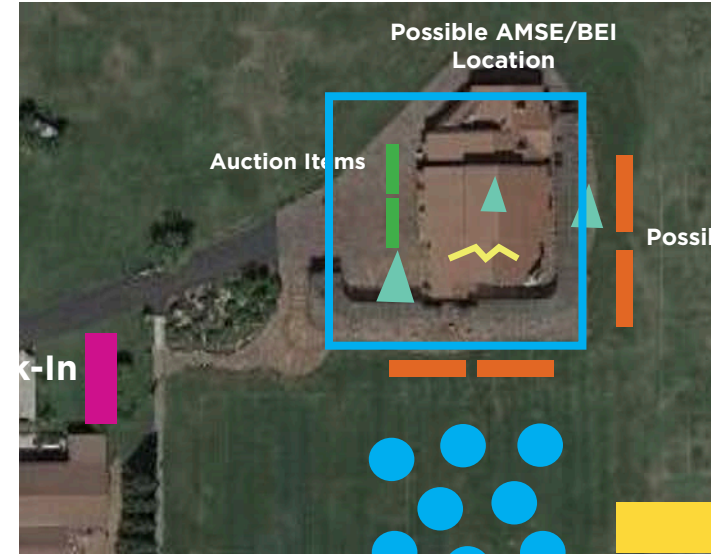
Indoor Area

- Band Plays in this area
- Easel's with frames highlighting sponsors
- Indoor Bar



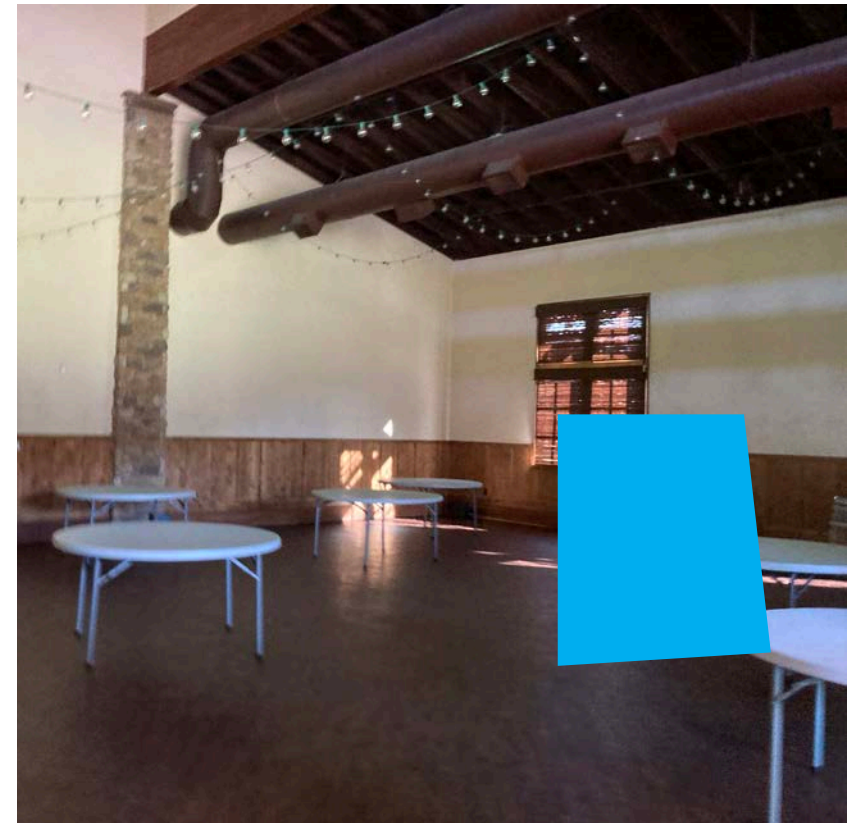
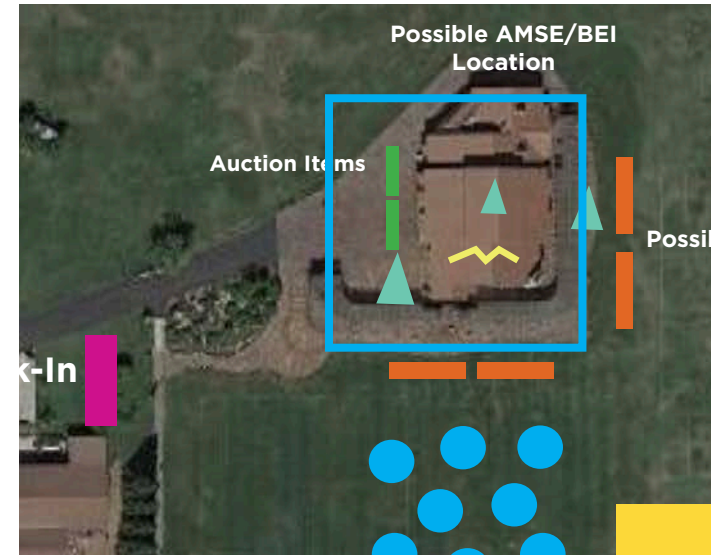
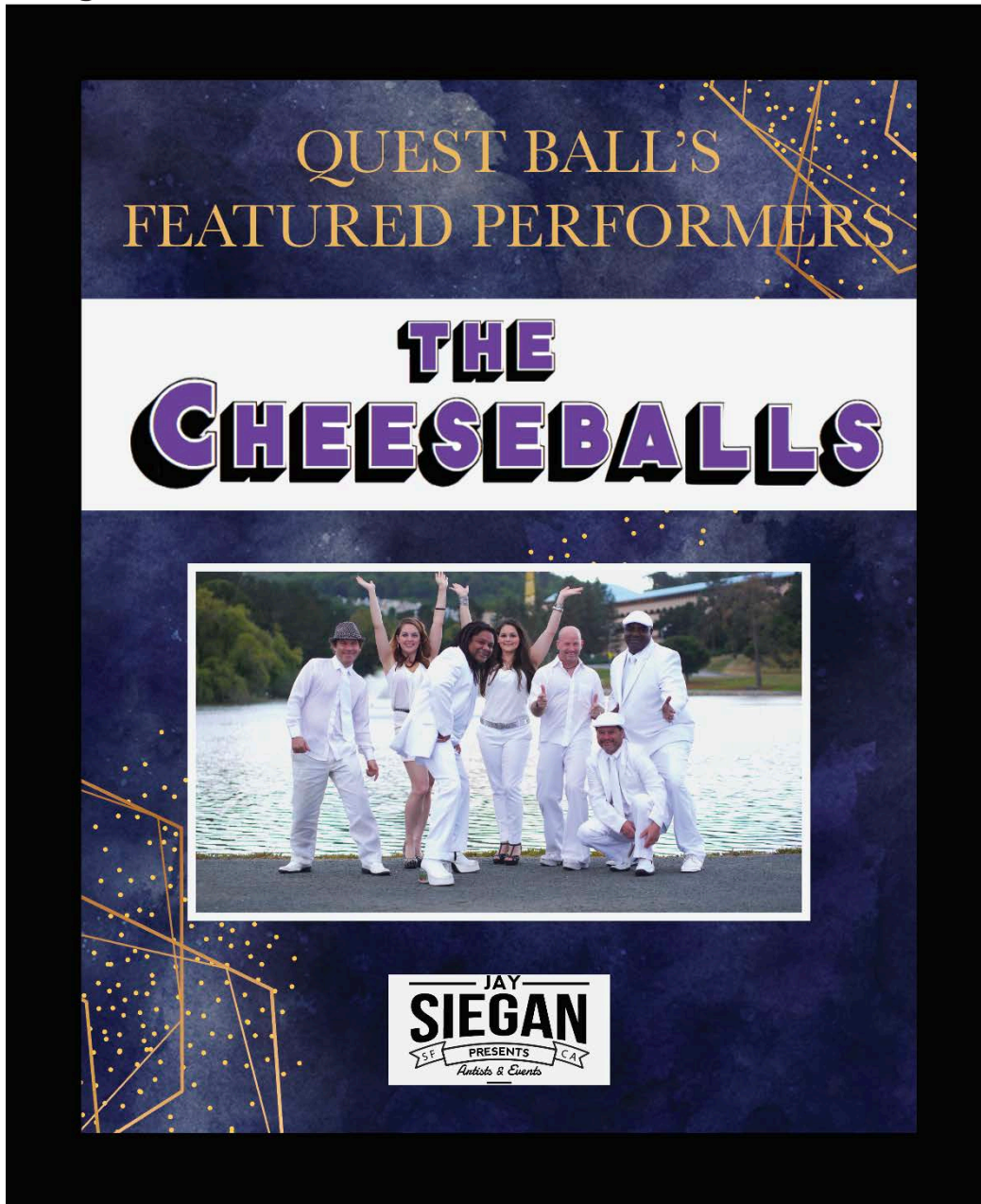
Sponsors in Frames on Easels

Qty: ?



Band Sign in Frame on Easel

Qty: 1





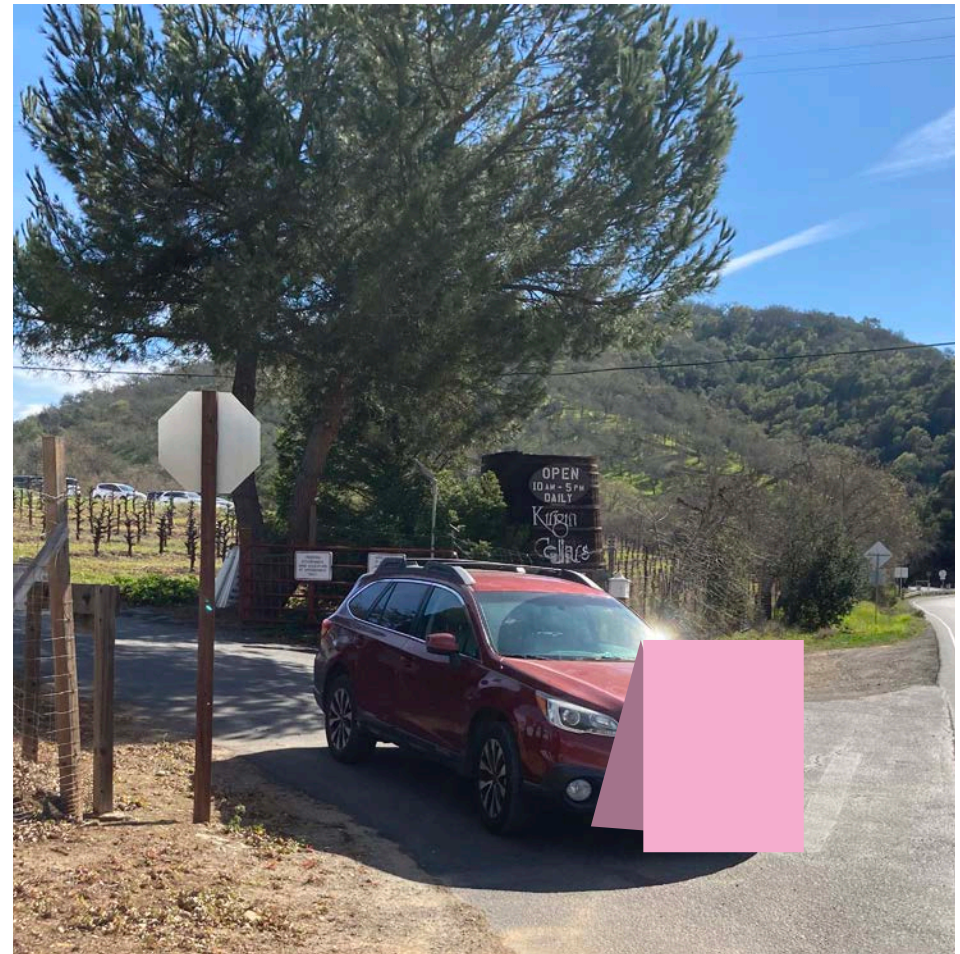
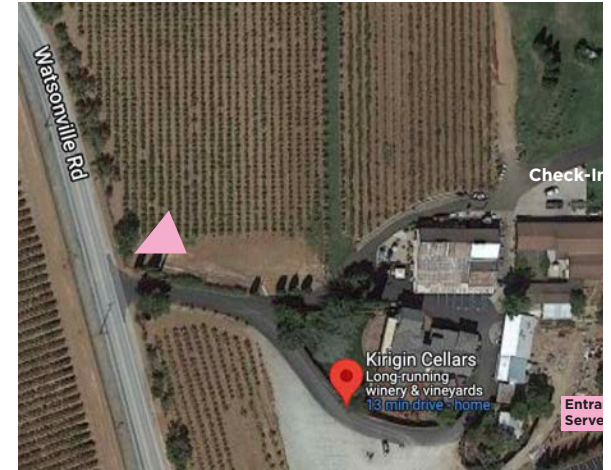
Restroom Signs - Click Here for Examples Qty: 4



Next Exit -

[Click Here for Examples](#)

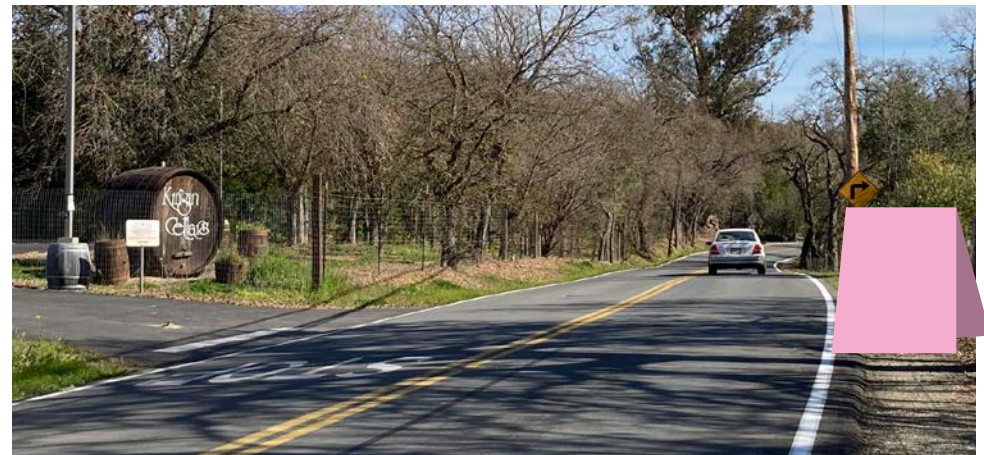
Qty: 2 (1 A-Frame)



Entrance

[Click Here for Examples](#)

Qty: 4 (2 A-Frames)



Welcome -
Click Here for Examples
Qty: 2 (1 A-Frame)



Check-In

[Click Here for Examples](#)

[Qty: 2 \(1 A-Frame\)](#)



Car Show -

[Click Here for Examples](#)

Qty: 2 (1 A-Frame)



Bid Pal Mobile Signs -

[Click Here for Examples](#)

Qty: 8 (4 A-Frames)

• 2 at check-in

• 2 by auction tables



HOW TO USE BIDPAL® MOBILE BIDDING

TO START, GO TO:
www.one.bidpal.net/questball2022

HOW DO I FIND ITEMS?

You can find items by pressing any one of the buttons on the main menu, or by using the search bar to find a specific item or category.

HOW DO I BID ON AN ITEM?

1) Find the item. 2) Select it. 3) Press Bid.

WHERE ARE THE ITEMS I BID ON?

Items you have bid on can be found at:
Menu > Your Activity



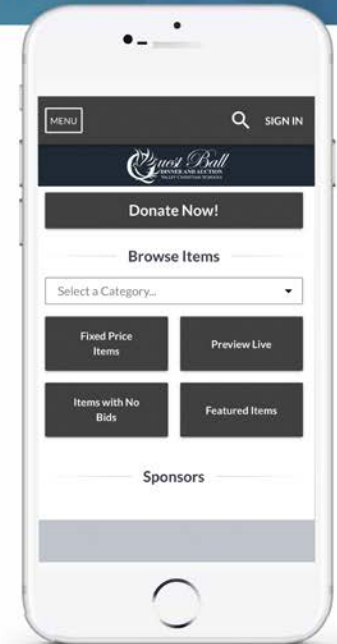
YOU ARE HIGH BIDDER



YOU HAVE BEEN OUTBID



ITEM HAS BEEN SOLD



CAN BIDPAL AUTOMATICALLY BID FOR ME?

After submitting a bid, you will be prompted to set a **Max Bid**. When you've been out bid, Bid Pal will automatically bid on your behalf up to the Max Bid amount you set using the bid increments provided.

WAS I OUTBID?

You'll receive a text message when you've been outbid. Alternatively, navigate to **Your Activity** to check the status of your bids.

BID OFTEN
and **HIGH!**

Apex Stage Banner 24 ft w x 4ft

