



KCPS' Vision for the King/Weeks School Site:
Construction of a New Martin Luther King, Jr. Elementary School

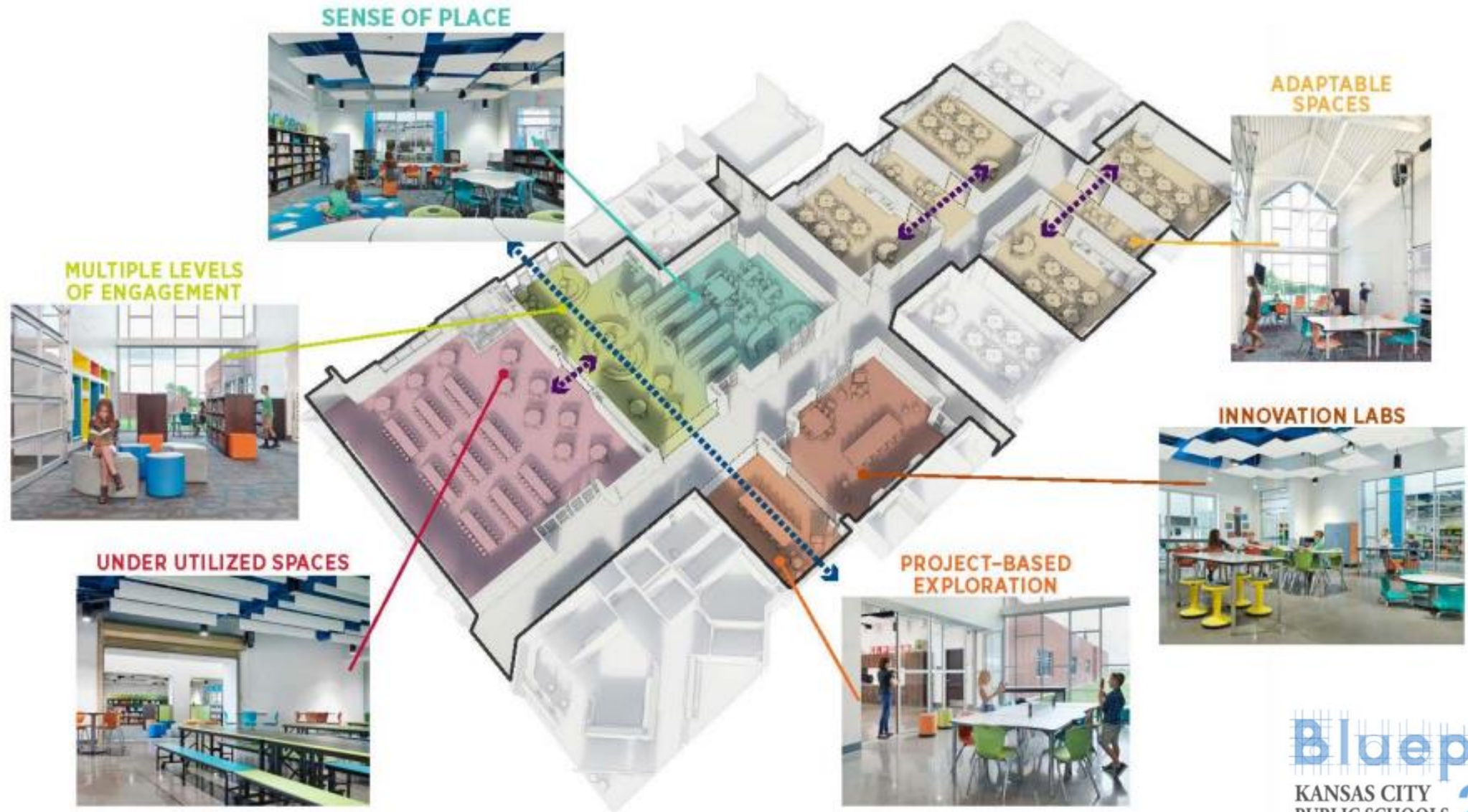
Oak Park Neighborhood Association Meeting
March 2, 2023

Blueprint

KANSAS CITY
PUBLIC SCHOOLS 2030



Facilities that Support the Academic Vision



It is our time! Dare to Believe!

The Future of Our Facilities:

New Construction >>> King Elementary School

Major Building Renovations

Building Expansions/Replacements

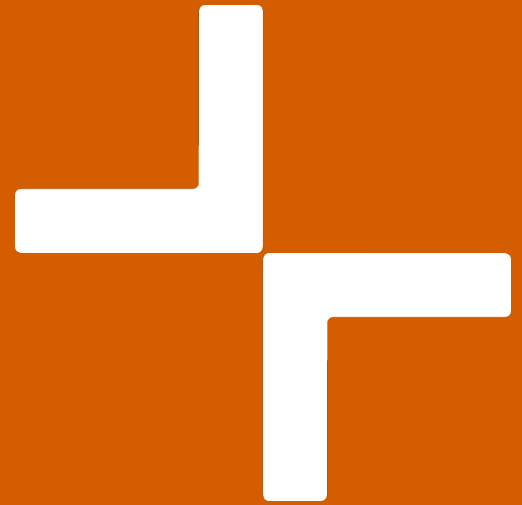


Blueprint
KANSAS CITY
PUBLIC SCHOOLS **2030**

Planning for a new King Elementary

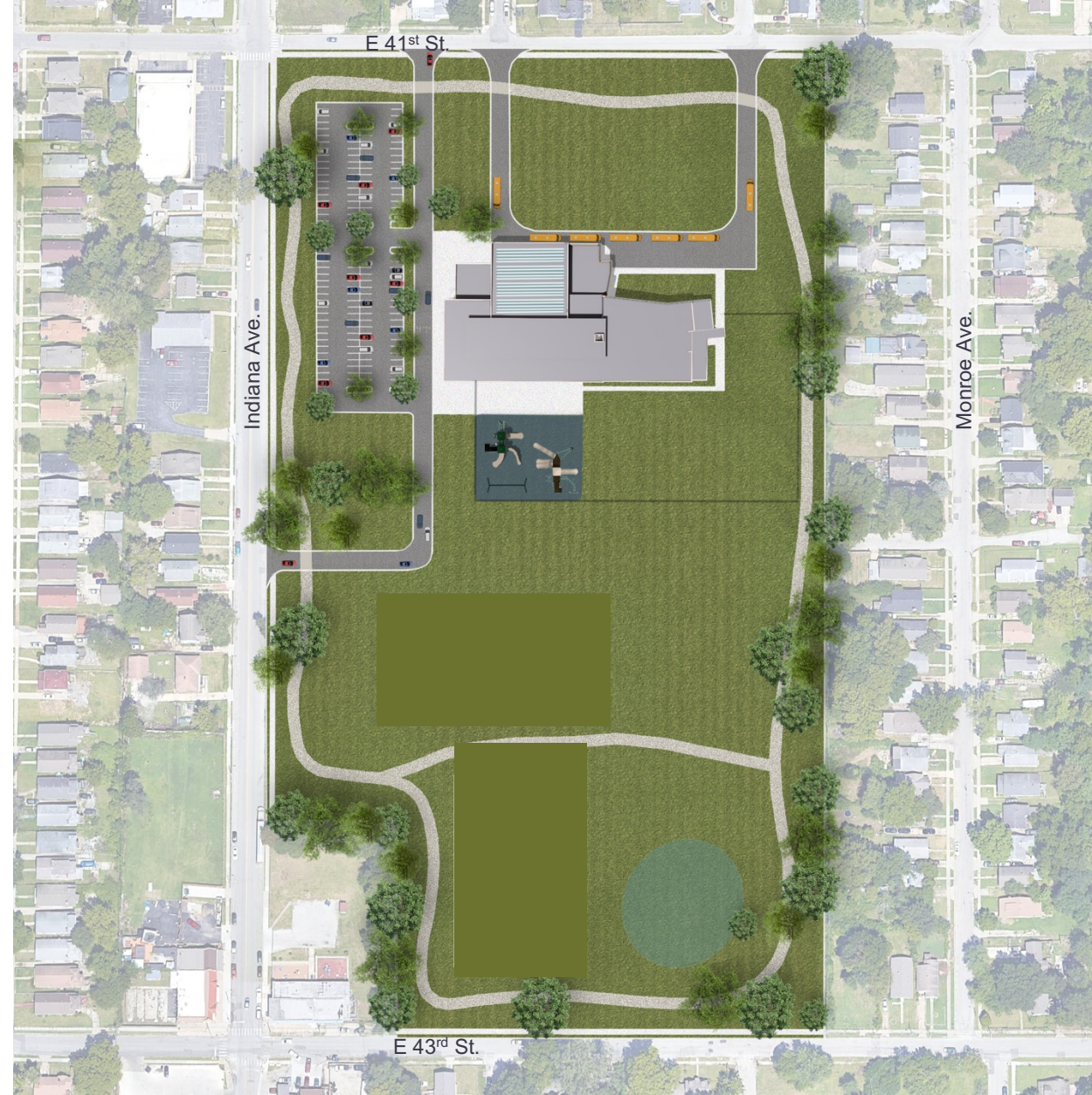
- **November 2022:** Conceptual designs/cost estimates
- **March 2023-Spring 2024:** Bond planning
- **Summer-Fall 2023:** Abatement & demolition of existing buildings
- **Fall 2023-Winter 2024:** School design/program planning with community stakeholders
- **April 2024:** Bond vote
- **Spring/Summer 2024:** Commence construction (*contingent on voter support for bond*)
- **Fall 2026:** School opens

New King Elementary School Concept #1





Existing



Proposed



EXTERIOR



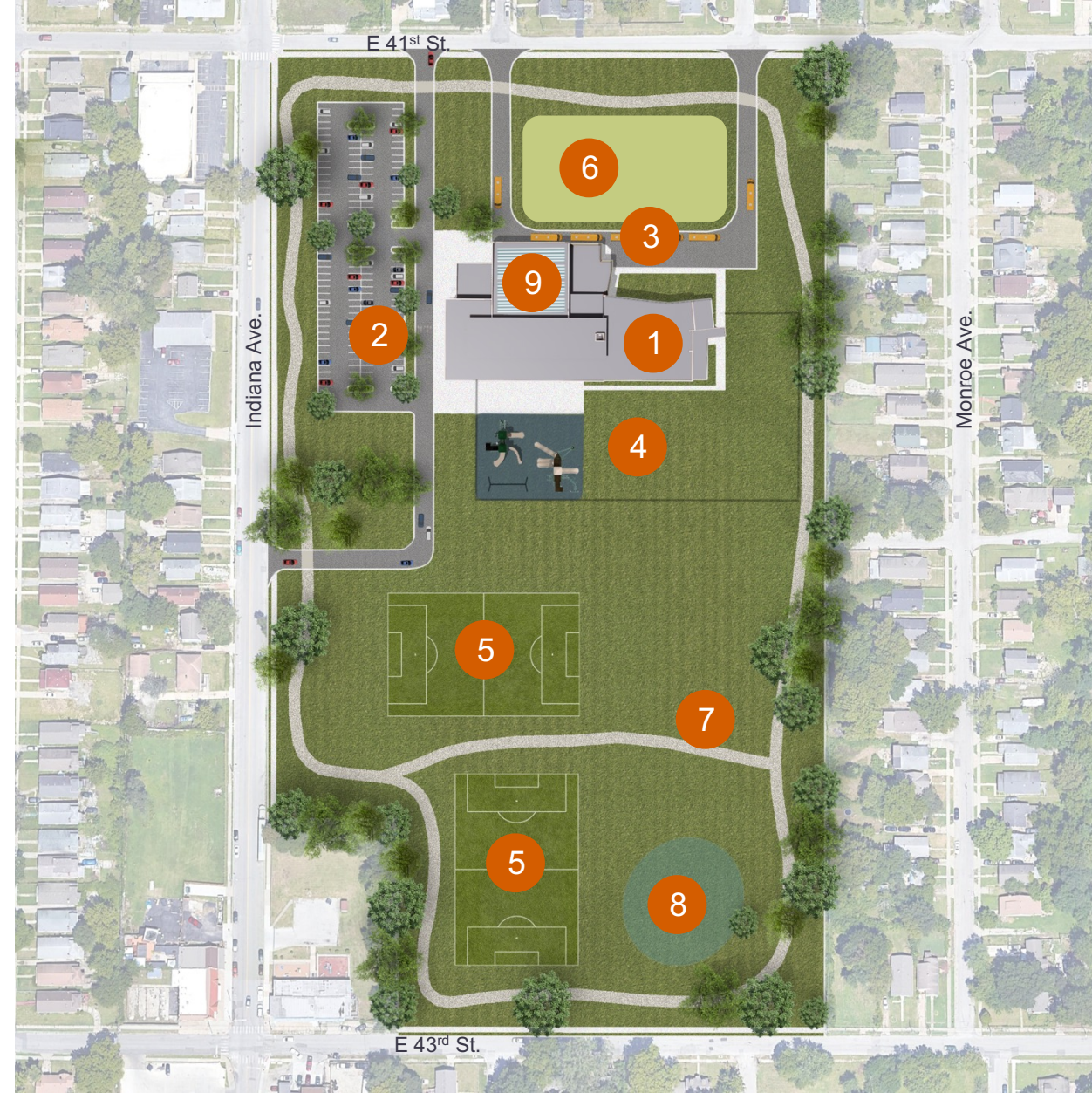
EXTERIOR



NEW ELEMENTARY SCHOOL

Site Features

- 1 School Building
- 2 Parking Lot and Car Drop-off
- 3 Bus Drop-off
- 4 Outdoor Play Areas (fenced in)
- 5 Play Fields
(Potential New Facility or Park)
- 6 Community Garden
- 7 Walking Path
- 8 Stormwater Detention
- 9 Photo Voltaic Panels



Proposed



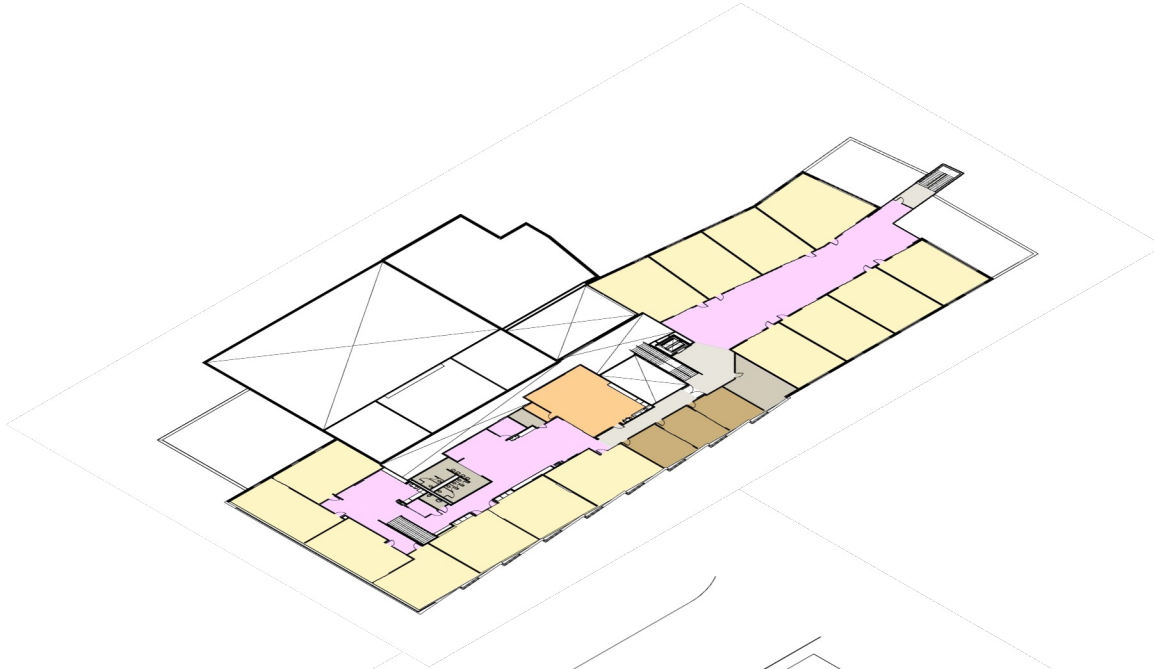
New King Elementary School

Concept #2

KING ELEMENTARY SCHOOL: CONCEPT #2



2



1



NEW ELEMENTARY SCHOOL

Major Design Components

- 600 Students
- New Construction 75,000 SF
- 4 Neighborhoods
- Collab
- Classroom / Collab
- Classroom / Classroom
- Central Commons + Library
- World Language Program
- Science + Robotics + VR
- Gym / Auditorium / Music
- Community Space



PRACTICE FIELDS

INDIANA AVENUE

41ST STREET

43RD STREET

PLAY
GROUNDS

PODS

FINE
ARTS

MEDIA

ATHLETICS

CAFETORIUM

SCIENCE

ADMIN

SERVICE

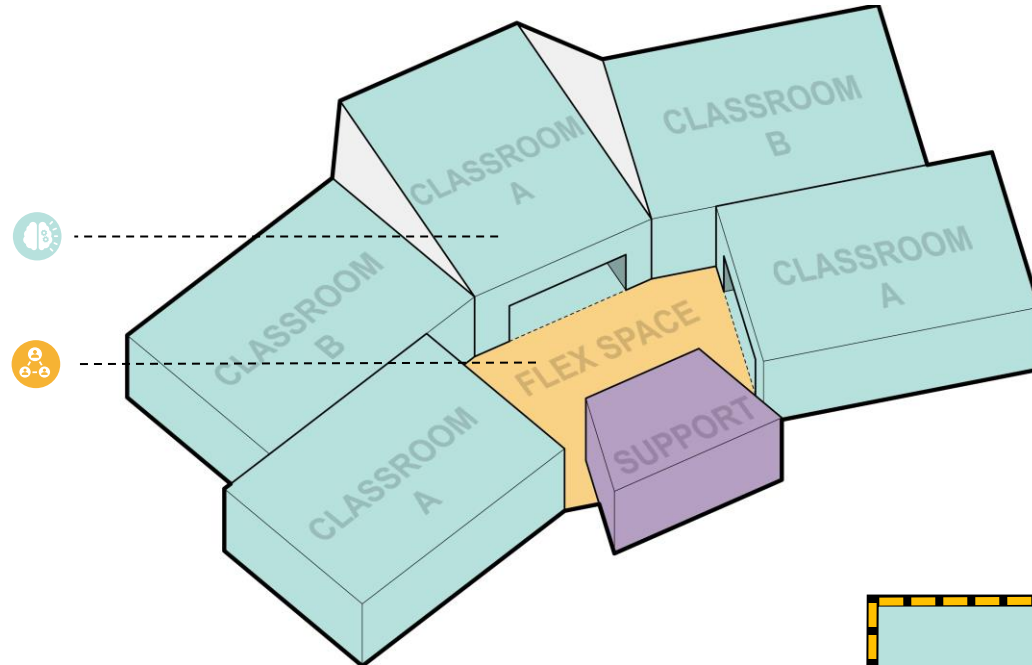
PODS

BUS DROP OFF

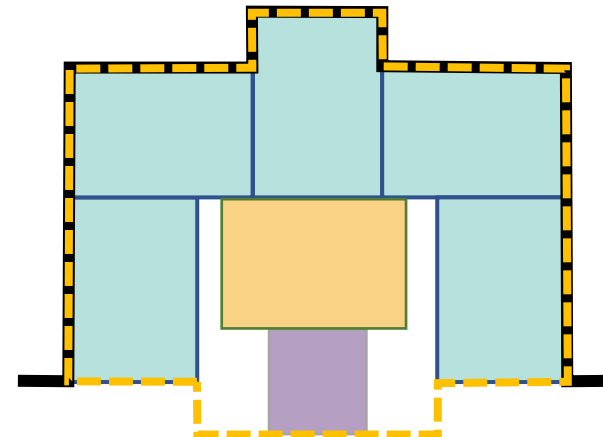
PARKING

ENTRY

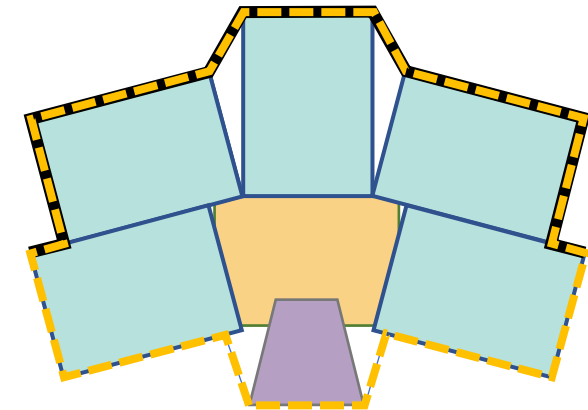
► LEARNING POD



Learning Pod



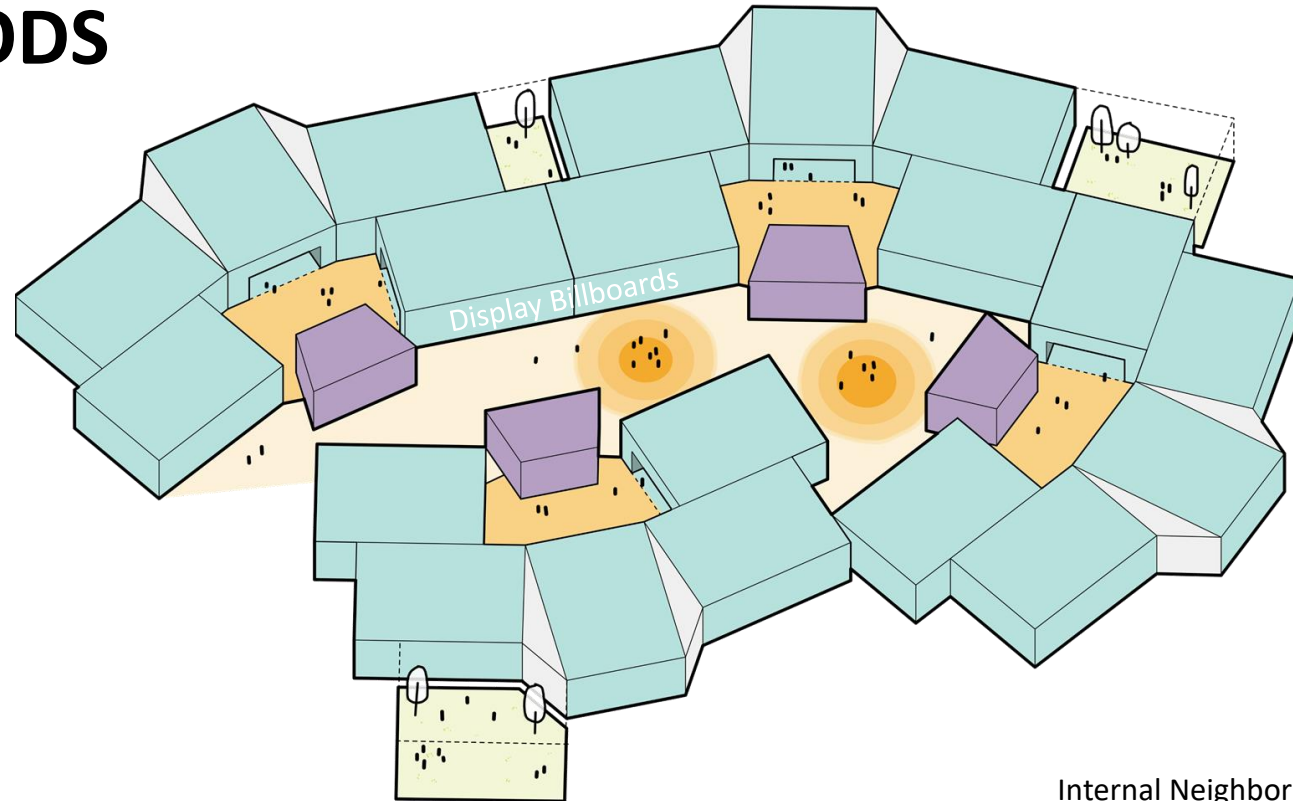
7,860 sf



7,340 sf

Social and Emotional Health
Individualization / Layering

► NEIGHBORHOODS



Display Billboards

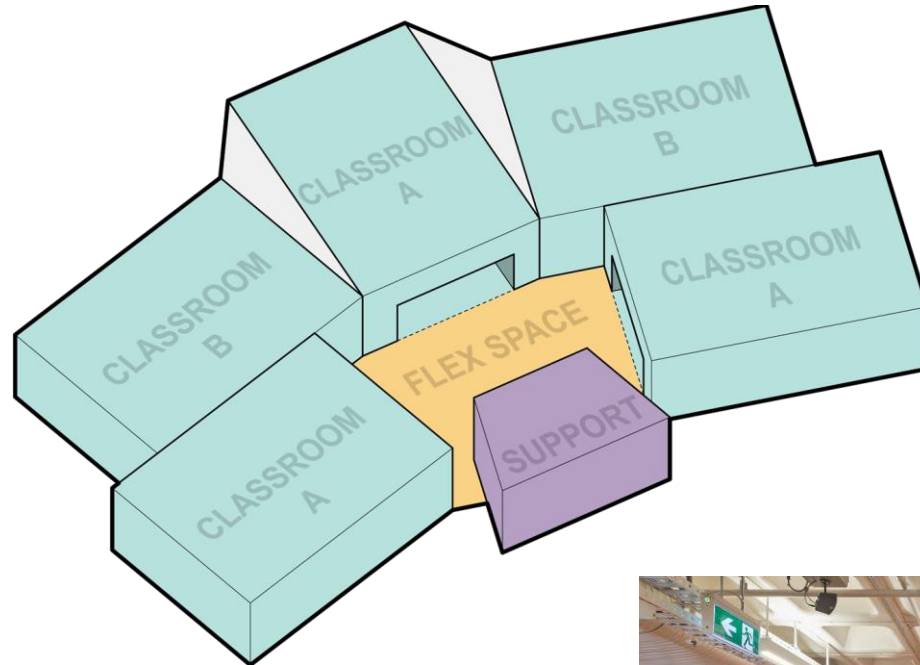
Social and Emotional Health
Individualization / Layering



Internal Neighborhood Parks



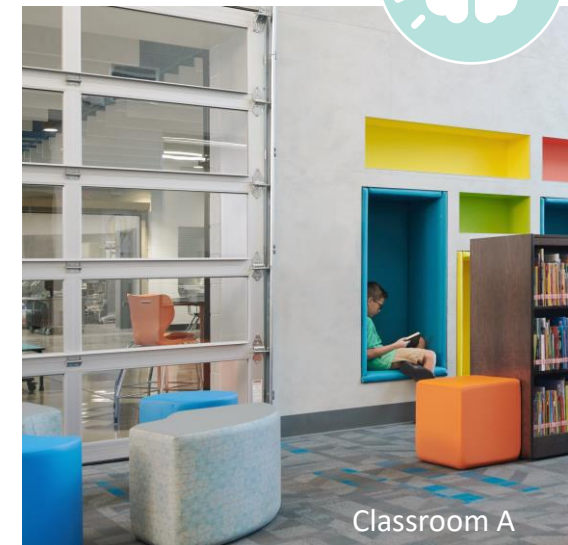
► LEARNING POD



Classroom B



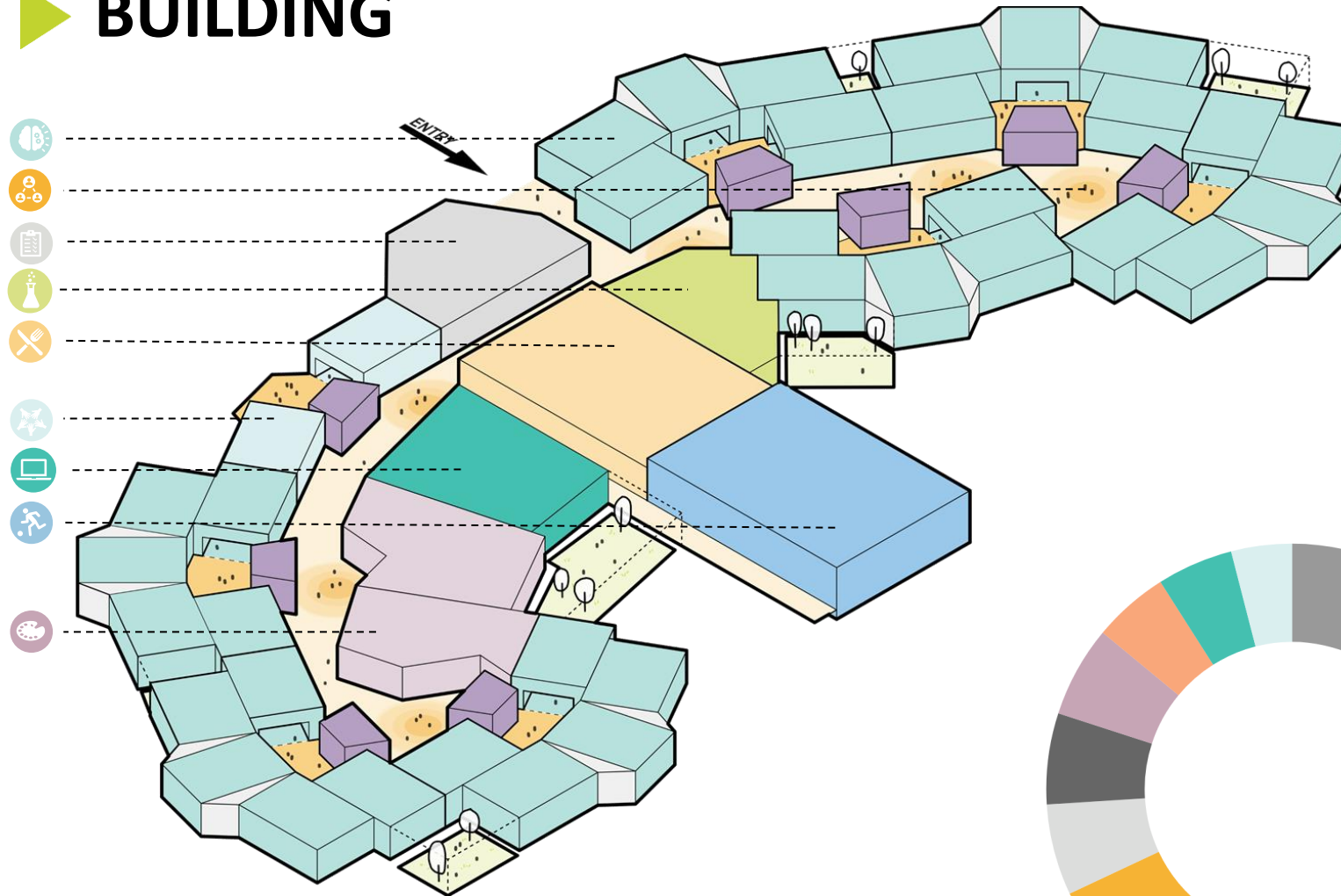
Flex Space



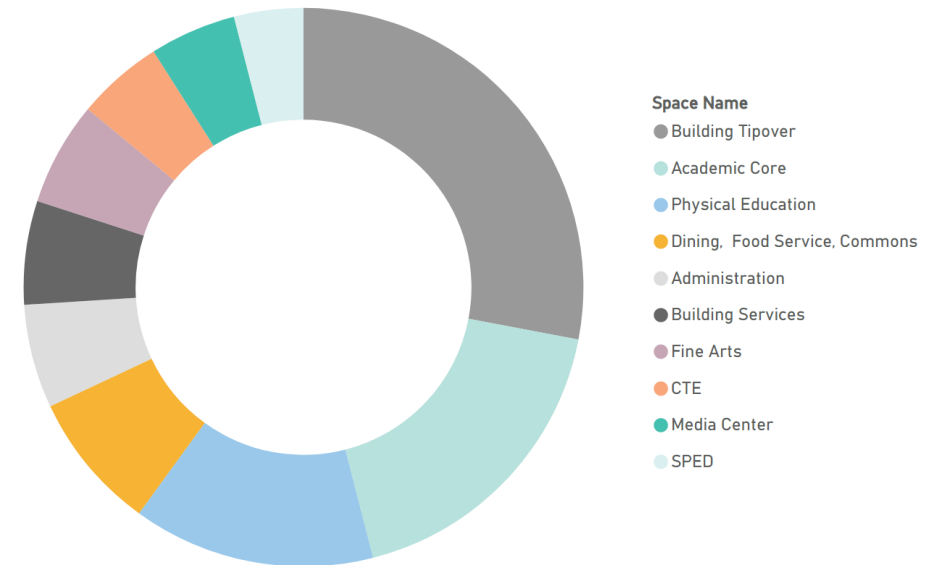
Classroom A

Social and Emotional Health
Individualization / **Layering**

BUILDING



Social and Emotional Health
Individualization / **Layering**



Moving Forward Together: Call to Action

- Participate in the Bond engagement process
- Participate on one of the Moving Forward Together Taskforce Committees
- Participate in the King Elementary design/planning process
- Commit to mentor a student (<https://www.kcpublicschools.org/how-to-get-involved/mentoring>)
- Volunteer to be a reader with our KCPS Loves to Read initiative (<https://www.kcpublicschools.org/how-to-get-involved/volunteer>)
- Volunteer at King Elementary School (<https://www.kcpublicschools.org/how-to-get-involved/volunteer>)
- Sign up for a school tour

To get involved, please sign-up before you leave or email: Blueprint2030@kcpublicschools.org

Environmental/Safety Concerns

NESHAP Asbestos & Hazardous Waste Inspection

- 68 suspect asbestos containing materials (ACMs)
- Due to the excessive vandalism of the structures, specifically the theft of copper piping, an accurate quantification of the remaining asbestos-containing pipe fittings was not possible. Estimates of remaining pipe fittings and resulting asbestos debris are based on historical inspection reports as well as visual estimation during this survey. Areas of asbestos pipe fitting debris that was mixed-in with non-asbestos (drywall, ceiling tile) debris was noted at numerous locations but could not be accurately distinguished.

NESHAP ASBESTOS & HAZARDOUS WASTE INSPECTION

Former King / Weeks School Complex
4201 Indiana Avenue, Kansas City, MO 64130

Prepared For:
Shannon Jaax
Director, Repurposing Initiative
Kansas City Public Schools
2901 Troost Avenue
Kansas City, MO 64109

Date: December 7, 2022
Project Number: 922249

Prepared By:
OCCU-TEC, Inc.
2604 NE Industrial Drive, Suite 230
North Kansas City, MO 64117
Phone: (816) 231-5580
Fax: (816) 231-5641
www.occutec.com

Table 3.1 Summary of Asbestos Containing Materials

Former King Middle School

Sample #	Material Description	Material Location	Approx. Quantity	Friability	% Asbestos
MF-02-01	Mudded Roof Drain Line Fitting	All roof drain lines	16 FG	FR	3% Chrysotile
GSU-07-01	Sink Undercoating - gray	2 nd Floor - Space 127, 120, 96	13 sinks	NFR	5% Chrysotile
BSU-08-01 BSU-08-02	Sink Undercoating - black	Ground Floor - Space 2, 2 nd Floor - Space 137, 116	3 sinks	NFR	3% Chrysotile
MF-09-01	Domestic Pipe Fittings - 2-3" and associated debris	Ground and 1 st Floors	482 SF	FR	3% Chrysotile
FD-13-01	Fire Door Insulation	Ground Floor - Space 15,	186 doors	FR	5% Amonite, 3% Chrysotile
BTT-17-01	Black Tabletop	1 st Floor - Space 71, 55	3 tabletops	NFR	4% Chrysotile
HM #19	Kiln Electrical Wiring	2 nd Floor - Space 116	5 LF	FR	Assumed
SINK-H1-1 (*)	Gray Sink Undercoat	Room 127	1 sink	NFR	6% Chrysotile

* = Historical Sample
Sq. Ft. = Square Feet
EA = Each
w/ = With
Rm. = Room

FR = Friable
NFR=Non-Friable



Photos from Environmental Consultant



Photos from Appraisal Company