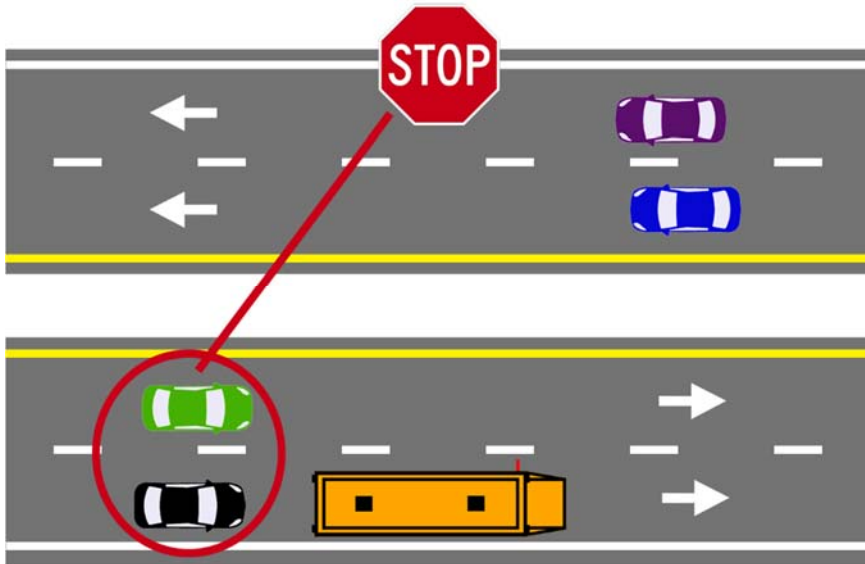


Divided Highway with a Median Separation

When School bus stops and activates its stop arm and flashing red lights, all traffic approaching from behind must stop.



Kansas State Department of Education
School Bus Safety Unit
900 SW Jackson Street
Topeka, Kansas 66612

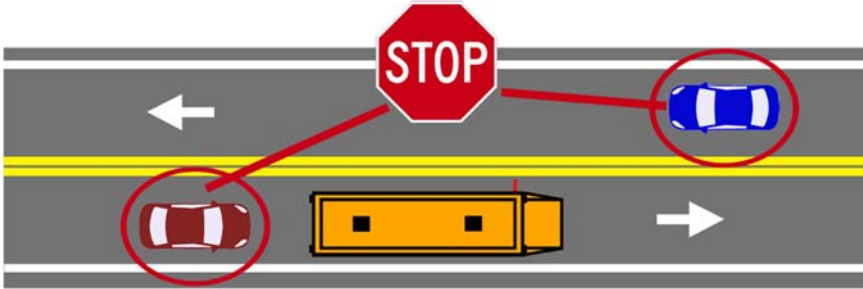
KANSAS SCHOOL BUS STOP ARM LAW



Kansas law, KSA 8-1556 requires all motorists to stop when approaching or overtaking a stopped school bus displaying its flashing red lights and stop arm. Motorists are to remain stopped until the bus is no longer displaying its flashing red lights and stop arm. Violation of this law not only endangers children but is also punishable by a fine and court costs in excess of \$420.

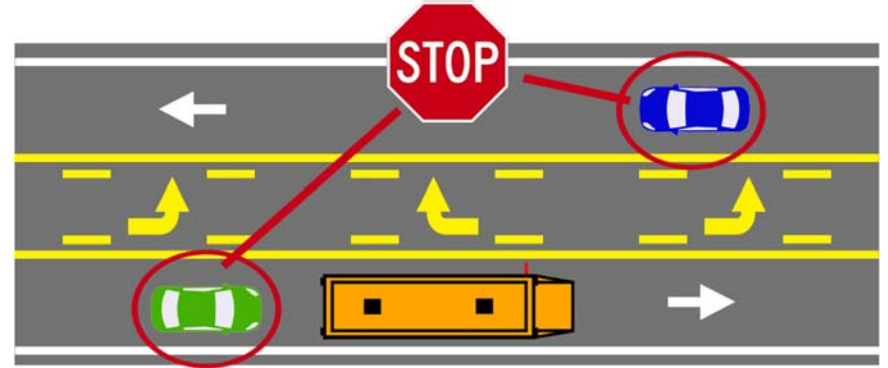
Two – Lane Roadway

When school bus stops and activates its stop arm and flashing red lights, all traffic must stop from both directions.



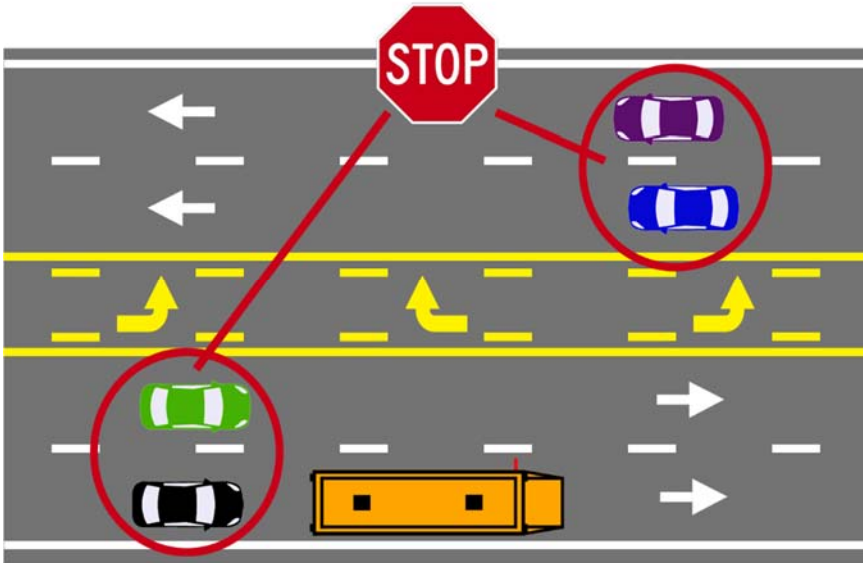
Two – Lane Roadway with Shared Left Turn Lane

When school bus stops and activates its stop arm and flashing red lights, all traffic must stop from both directions.



Four – Lane Roadway with Shared Left Turn Lane

When school bus stops and activates its stop arm and flashing red lights, all traffic must stop from both directions.



Four Lane Roadway with Double Yellow Line

When school bus stops and activates its stop arm and flashing red lights, all traffic must stop from both directions.

