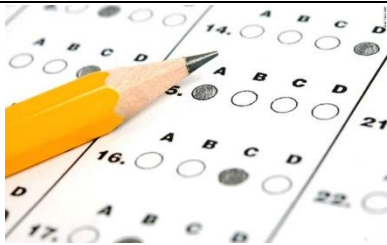


Robert E. Fitch High School

MATH ELECTIVES

SAT PREP

(0.5 Credit) You will get a complete review



of the topics covered in the math portion of the SAT Reasoning Test. Problem-solving abilities will be greatly enhanced. Throughout the course, students will be provided with all the mathematical insights, shortcuts, strategies and critical thinking skills needed to be well prepared for the test. Students enrolled in SAT Prep will complete both Math and ELA units to prepare for the entire test.

PROBABILITY & STATISTICS

(1 Credit) The purpose of Statistics and Probability is to introduce students to the major concepts and tools for collecting, analyzing and drawing conclusions from data. Students are exposed to three broad conceptual themes: Exploring Data: Describing patterns and departures from patterns; Sampling and Experimentation: Planning and conducting a study; and Anticipating Patterns: Exploring random phenomena using probability and simulation.



Math Intervention

(0.5 Credit each Semester) Math Intervention is designed to provide intensive support to high school students identified for strategic intervention concurrently enrolled in College Prep Math. This course will help students build their conceptual understanding of content while practicing necessary fundamental skills. Diagnostic assessment tools will be used, so students work on the gaps in their learning. This additional period supports the core period and allows the opportunity to preview, review or reteach the standards covered in their core class. The Math Intervention course is offered in the following formats: Math Intervention 9, Math Intervention (for upperclassman). Sometimes, the Math Intervention course is paired with FAS or Reading Success for students who need support in more than one academic area.

