



plante moran | cresa

# Birmingham Public Schools

## 2020 Bond Program

Summer 2021 Projects Preview | December 8, 2020



# 2020 Bond – Meeting Agenda

---

<b>Section 1</b>	Scope of Work
<b>Section 2</b>	Team Organizational Chart
<b>Section 3</b>	Summer 2020 Project Recap
<b>Section 4</b>	2021 Project Previews
<b>Section 5</b>	Questions



# 2020 Bond – Scope of Work

---

## Bond Breakdown

\$154.5 million	Facility and Site Improvements & Additions
\$ 24.6 million	Information Technology & Security
\$ 8.5 million	New Buses
<u>\$ 7.4 million</u>	<u>Furniture, Fixtures &amp; Equipment (FF&amp;E)</u>
<b>\$195.0 million</b>	<b>Total</b>



# 2020 Bond – Team Organization Chart



Owner's Representative



AE Firms +  
Furniture



Construction  
Managers



Technology  
Designer

Additional  
Consultants



Program #1  
Elementary &  
Middle Schools

GMB Architects



Program #2  
High Schools &  
Annex

IDS



Program #1  
Elementary &  
Middle Schools

Rockford  
Construction



Program #2  
High Schools &  
Annex

Barton Malow  
Builders



StructureTec

KEM-TEC  
A GROUP OF COMPANIES  
ENGINEERING • PLANNING • ENVIRONMENTAL SERVICES

environmental group





# 2020 Bond – 2020 Project Recap

---

## Seaholm – Stadium Lighting Replacement

- Substantially Complete – August 2020

## Groves & Seaholm - Stadium Sound Replacement

- Substantially Complete – August 2020

## Groves & Seaholm – Gymnasium Video Scoreboards/Ribbons & Sound Systems

- Substantially Complete – November 2020



# 2020 Bond – 2021 Project Preview

---

## Design, Bid & Award Process Overview

- Programming / Scope Verification
- Schematic Design (SD)
- Owner Review
- SD Estimate
- Design Development (DD)
- Owner Review
- DD Estimate
- Board Committee Update
- Construction Documents (CD)
- Final Review by Bond Team
- Issue for Bids
- Submission to State for Plan Review
- Award Recommendation to Board
- Board Award
- Issue Contracts



# 2020 Bond – 2021 Project Preview

---

## Proposed Project Award Schedule

### December 2020 Board Meetings

- Phase 1 Presentation of 2021 Work
- Selective Roof Replacements – Berkshire MS, Beverly ES & Greenfield ES
- Program #2, Bid Pack #1 – Groves Bleachers & Groves/Seaholm Press Boxes

### January 2021 Board Meetings

- Currently Open

### February 2021 Board Meetings

- Program #1, Bid Pack #1 – Pierce Elementary Addition & Renovations
- Program #2, Bid Pack #2 – Seaholm Renovations (Counseling, AP Offices, Studio, Pilot Toilet Rooms)
- Program #2, Bid Pack #3 – Groves Maintenance Building, Utilities & Tennis Courts
- Program #2, Bid Pack #3 – Transportation Property Building

### March 2021 Board Meetings

- Program #2, Bid Pack #4 – Midvale Parking Expansion & Emergency Generator Installation
- Program #2, Bid Pack #5 – Annex Addition & Renovations





# 2020 Bond – 2021 Project Preview

## Roofing Projects at Berkshire, Beverly, and Greenfield

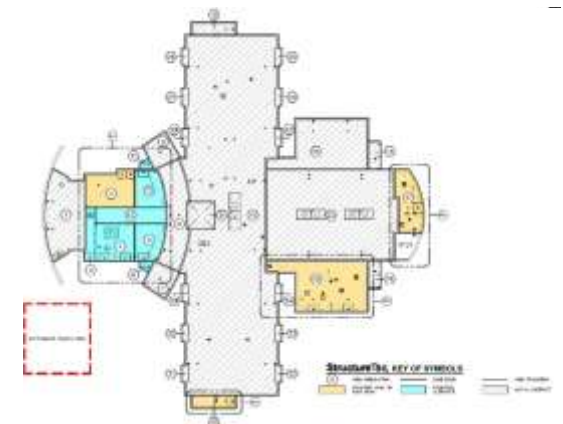
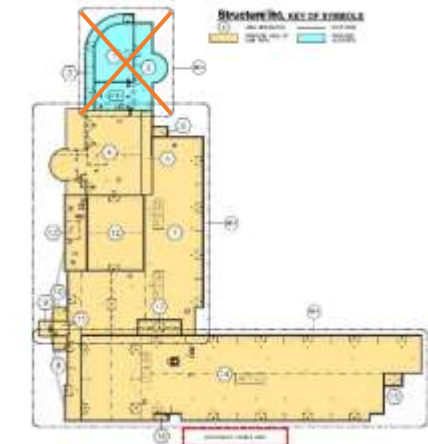
Berkshire Middle School



Beverly Elementary



Greenfield Elementary







plante moran | cresa

Program #1

**G**M**B**

**RF** **ROCKFORD**  
CONSTRUCTION



# 2020 Bond – 2021 Project Preview

## BP #1-1: Pierce Elementary – Interior Renovations Scope - 1<sup>st</sup> Floor



- TOILET ROOM RENOVATION
- REPLACE FLOORING
- OFFICE UPGRADES
- REPURPOSE EXISTING
- REPLACE CASEWORK

### PROGRAM

- TOILET ROOM RENOVATIONS
  - REPLACE CEILING
  - REPLACE TOILET PARTITIONS / STALLS
  - REPLACE FLOORING TILE
  - REPLACE WATER CLOSETS AND URINALS
  - REPLACE LAMINATES
  - ADA UPDATES
  - REWORK PLUMBING FOR THE REWORK
- REPLACE FLOORING WITH CERAMIC TILE
- REPLACE CASEWORK
  - REPLACE CEILING
  - REPLACE OFFICE CARPETING
  - REPLACE LIGHTING
  - REPLACE EXISTING 2 HIGH RATED OPENINGS AT MAIN OFFICE REDUCE WEIGHT OF DOOR
  - CONFORM RESTROOM INTENT / ADA UPDATES
  - REPLACE EXISTING SECURITY SYSTEM
  - EXPAND EXISTING CARD ACCESS SYSTEM
- REPURPOSE EXISTING CAFETERIA / STORAGE / RECREATION AREAS
  - ADD SPLIT SYSTEM FOR REDUCED COOLING

### NOTES

- REPLACE EXTERIOR DOORS (9 SWGLS, 10 DOUBLED)
- REPLACE 40 INTERIOR DOORS, KEEP FRAME
- REPLACE CHAIRS
- REPLACE CEILING IN MEDIA CENTER
- PROVIDE BOTTLE FILLER TO PROVIDE LEAD FILLERS / STUDENTS
- RESUPPORT EXISTING CONCRETE
- REPLACE EXTERIOR WALL PANELS
- ADA/MONEY FIRE SUPPRESSION SYSTEM
- REPLACE CEILING IN MEDIA CENTER + COMPUTER LAB



# 2020 Bond – 2021 Project Preview

## BP #1-1: Pierce Elementary – Interior Renovations Scope – 2<sup>nd</sup> Floor



- TOILET ROOM RENOVATION
- REPLACE CASEWORK

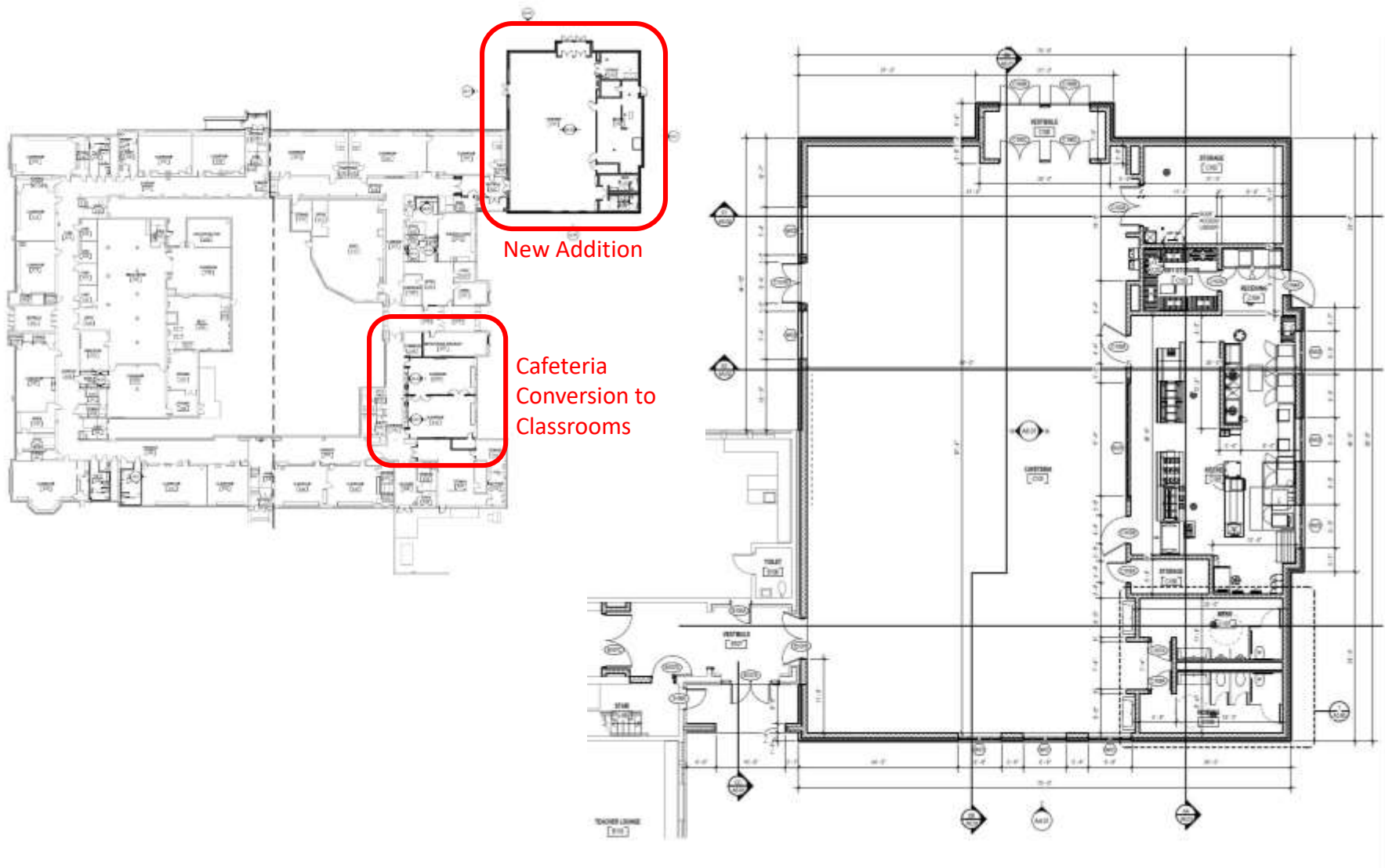
- PROGRAM**
- TOILET ROOM RENOVATIONS
  - REPLACE CEILING
  - REPLACE TOILET PARTITIONS / URINALS
  - REPLACE FLOORING TILE
  - REPLACE WATER CLOSETS AND URINALS
  - REPLACE LAVATORIES
  - ADA UPGRADES
  - REMOVE PLUMBING FIXTURE BODYS

- NOTES**
- REPLACE EXTERIOR DOORS (9 SINGLES, 20 DOUBLES)
  - REPLACE CASEWORK
  - REPLACE NOTORIZED BACK BOARDS
  - REPLACE BOILERS AND BOILER PUMPS



# 2020 Bond – 2021 Project Preview

## BP #1-1: Pierce Elementary – Cafeteria / Kitchen Addition Plan







# 2020 Bond – 2021 Project Preview

## BP #1-1: Pierce Elementary – Cafeteria Addition Elevation



CONCEPTUAL ARTISTIC REPRESENTATION



# 2020 Bond – 2021 Project Preview

## BP #1-1: Pierce Elementary – Cafeteria Addition Elevation



CONCEPTUAL ARTISTIC REPRESENTATION





# 2020 Bond – 2021 Project Preview

## BP #1-1: Pierce Elementary – Cafeteria Addition Elevation



CONCEPTUAL ARTISTIC REPRESENTATION



# 2020 Bond – 2021 Project Preview

---

## BP #1-1: Pierce Elementary – Toilet Room Elevation



CONCEPTUAL ARTISTIC REPRESENTATION



# 2020 Bond – 2021 Project Preview

## BP #1-1: Pierce Elementary – Cafeteria Conversion to New Classrooms



CONCEPTUAL ARTISTIC REPRESENTATION





# 2020 Bond – 2021 Project Preview

---

## BP #1-1: Pierce Elementary – Exterior Elevation From Parking Lot



CONCEPTUAL ARTISTIC REPRESENTATION



# 2020 Bond – 2021 Project Preview

---

## BP #1-1: Pierce Elementary – Exterior Elevation From Playground



CONCEPTUAL ARTISTIC REPRESENTATION





# 2020 Bond – 2021 Project Preview

---

## BP #1-1: Pierce Elementary – Exterior Elevation From Playground



CONCEPTUAL ARTISTIC REPRESENTATION





plante moran | cresa

Program #2

i D S



**Barton Malow**  
**BUILDERS**





# 2020 Bond – 2021 Project Preview

## BP #2-1: Groves High School | Stadium Improvements

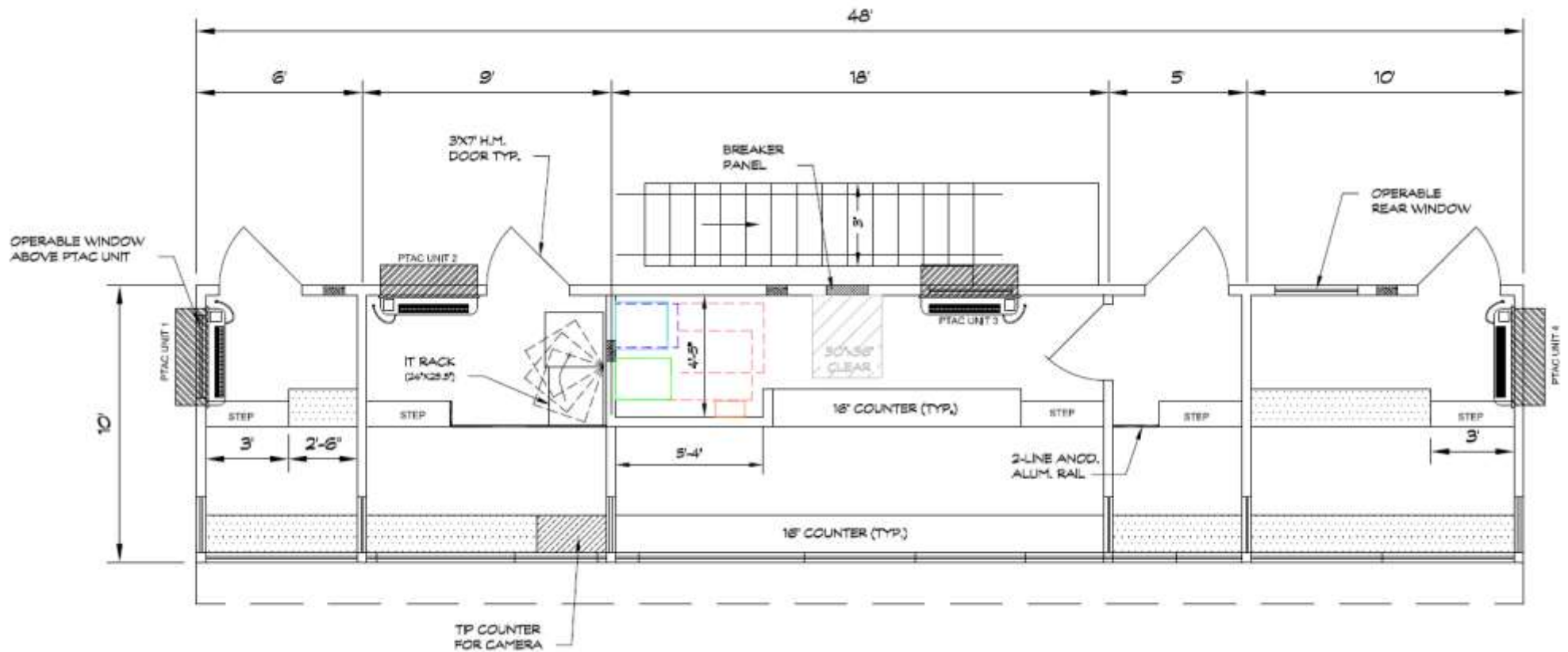


\*IMAGES AND RENDERINGS ARE FOR CONCEPTUAL PURPOSES ONLY



# 2020 Bond – 2021 Project Preview

## BP #2-1: Seaholm High School | Press Box



\*IMAGES AND RENDERINGS ARE FOR CONCEPTUAL PURPOSES ONLY





# 2020 Bond – 2021 Project Preview

---

## BP #2-1: Seaholm High School | Press Box



\*IMAGES AND RENDERINGS ARE FOR CONCEPTUAL PURPOSES ONLY







# 2020 Bond – 2021 Project Preview

## BP #2-3: Groves High School | New Maintenance Building



\*IMAGES AND RENDERINGS ARE FOR CONCEPTUAL PURPOSES ONLY



# 2020 Bond – 2021 Project Preview

## BP #2-3: New Transportation Building



\*IMAGES AND RENDERINGS ARE FOR CONCEPTUAL PURPOSES ONLY



# 2020 Bond – 2021 Project Preview

## BP #2-2: Seaholm High School | Counseling Suite Renovation



\*IMAGES AND RENDERINGS ARE FOR CONCEPTUAL PURPOSES ONLY





# 2020 Bond – 2021 Project Preview

## BP #2-2: Seaholm High School | Counseling Suite Renovation

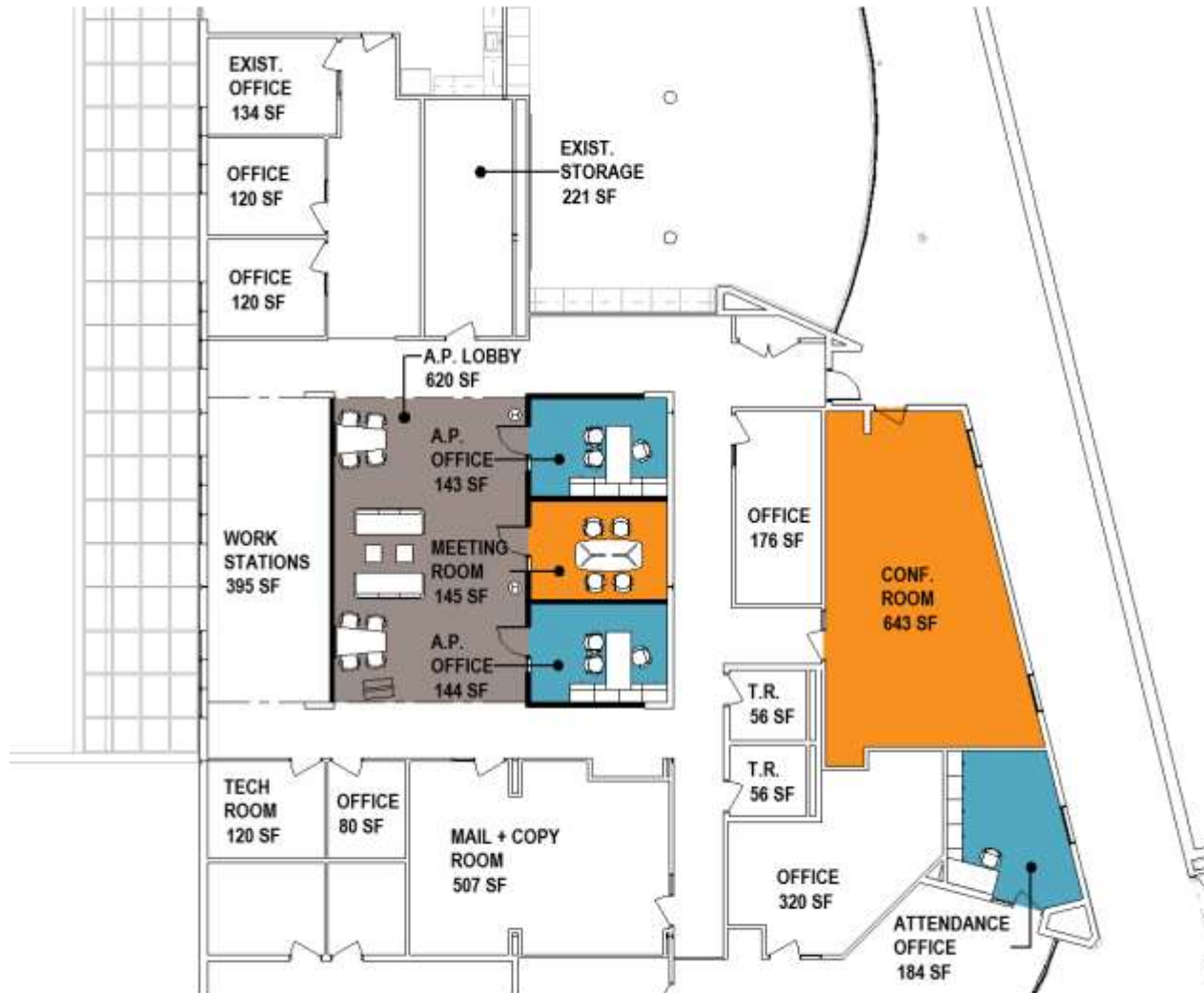


\*IMAGES AND RENDERINGS ARE FOR CONCEPTUAL PURPOSES ONLY



# 2020 Bond – 2021 Project Preview

## BP #2-2: Seaholm High School | Assistant Principal Office Renovations

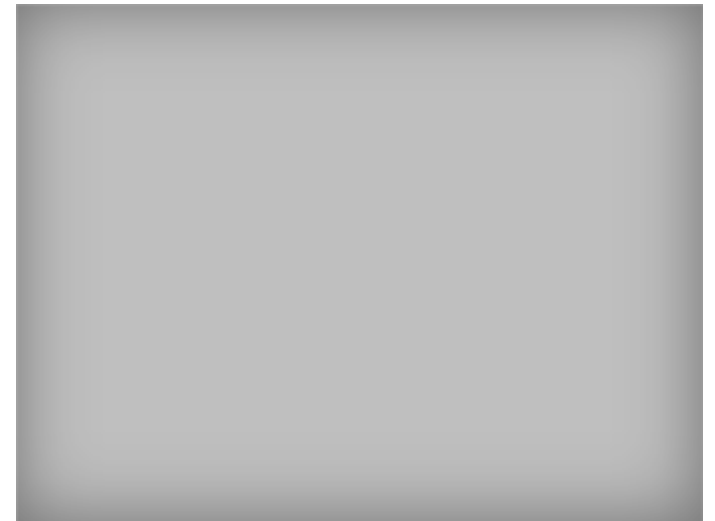


\*IMAGES AND RENDERINGS ARE FOR CONCEPTUAL PURPOSES ONLY



# 2020 Bond – 2021 Project Preview

## BP #2-2: Seaholm High School | Assistant Principal Office Renovations



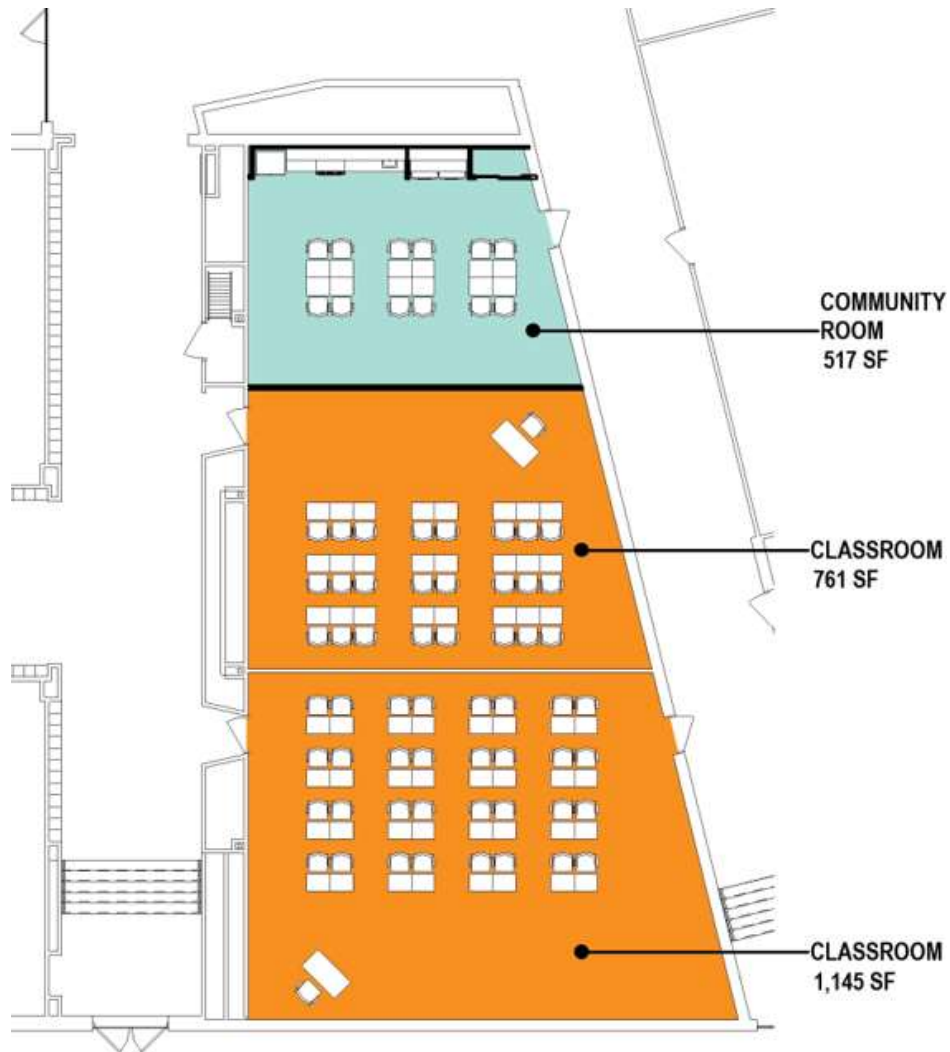
\*IMAGES AND RENDERINGS ARE FOR CONCEPTUAL PURPOSES ONLY





# 2020 Bond – 2021 Project Preview

## BP #2-2: Seaholm High School | Lower-Level Classrooms

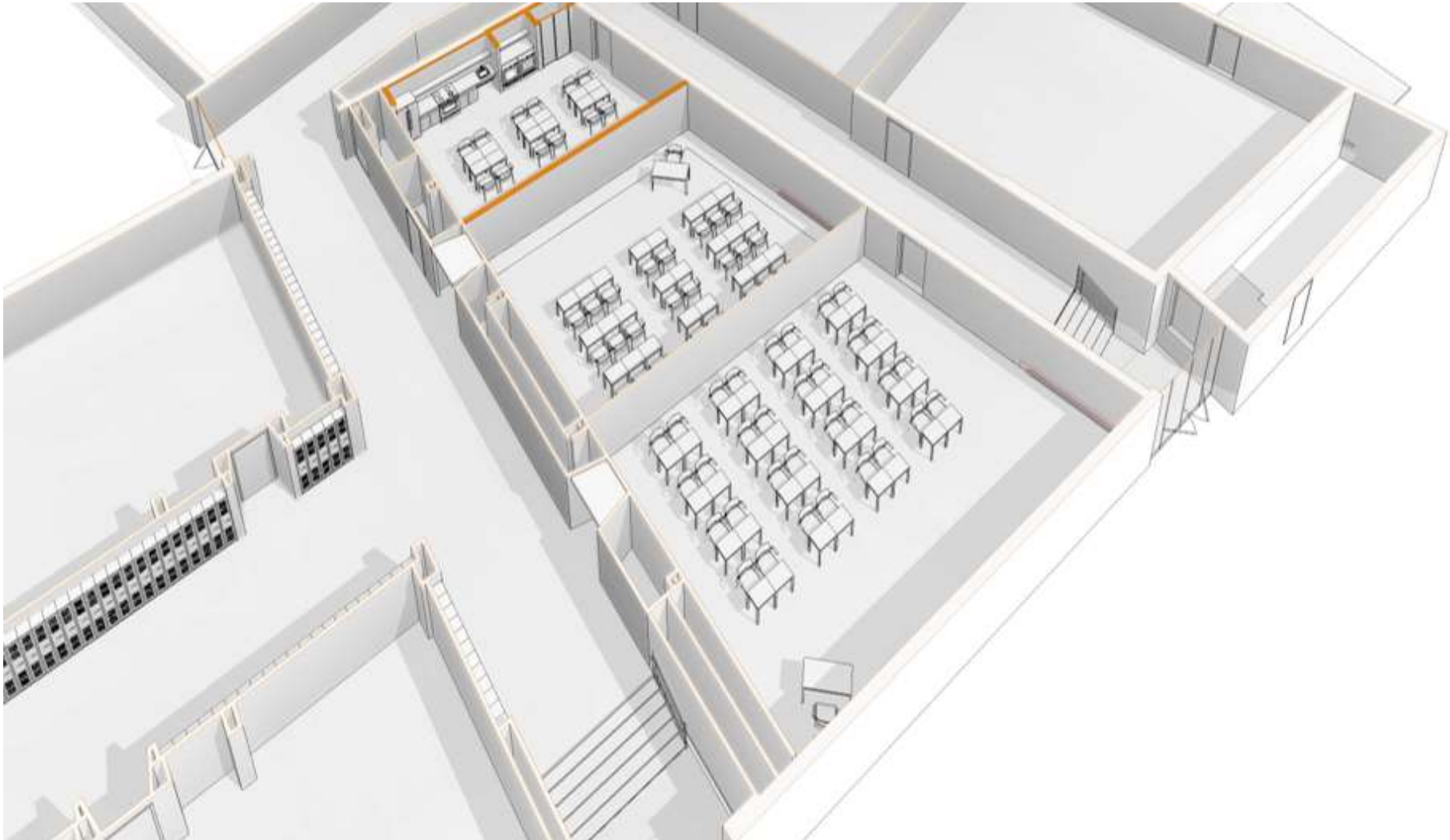


\*IMAGES AND RENDERINGS ARE FOR CONCEPTUAL PURPOSES ONLY



# 2020 Bond – 2021 Project Preview

## BP #2-2: Seaholm High School | Lower-Level Classrooms



\*IMAGES AND RENDERINGS ARE FOR CONCEPTUAL PURPOSES ONLY



# 2020 Bond – 2021 Project Preview

## BP #2-2: Seaholm High School | Pilot Toilet Rooms (Across from Little Theatre)

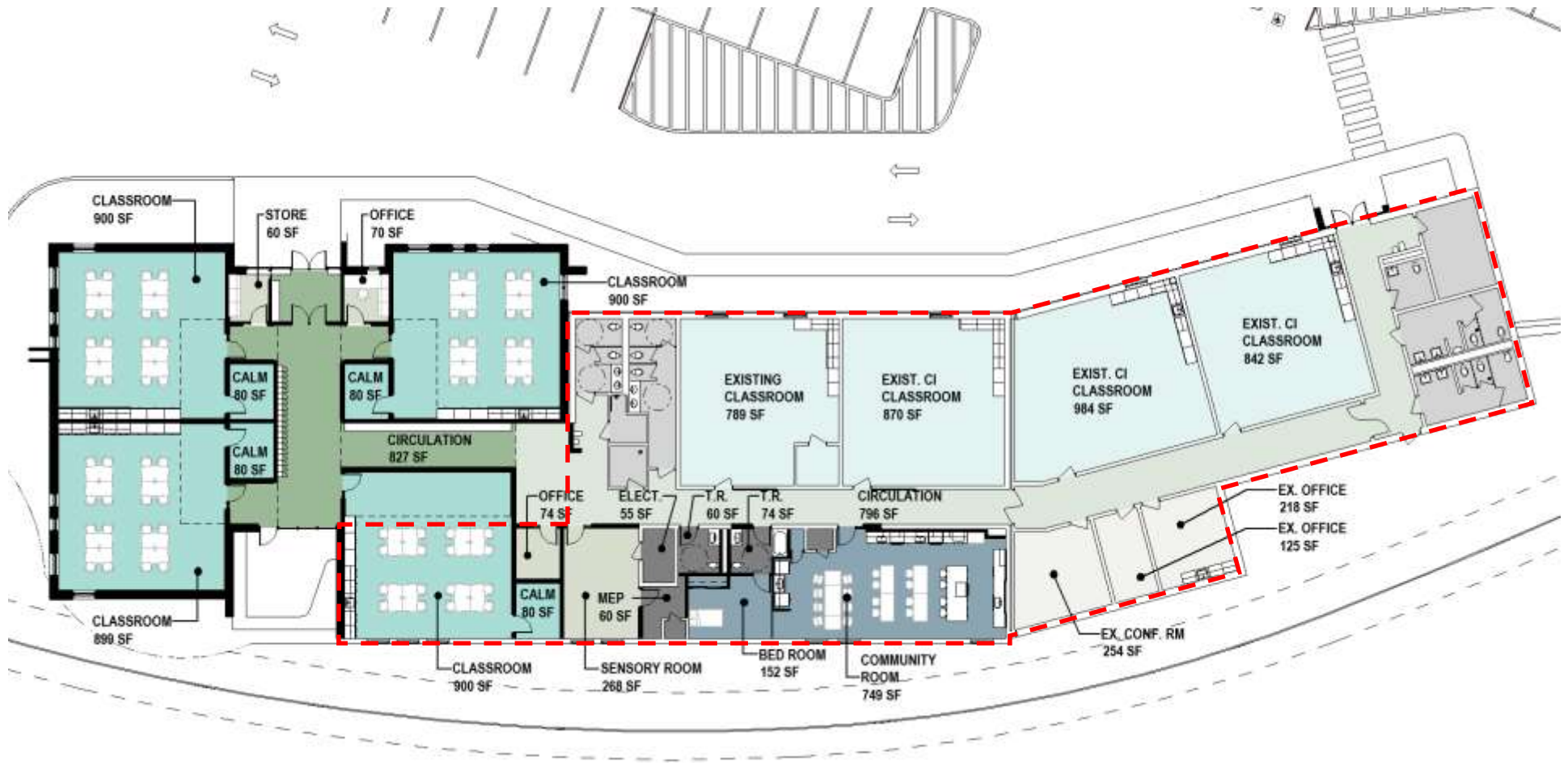


\*IMAGES AND RENDERINGS ARE FOR CONCEPTUAL PURPOSES ONLY



# 2020 Bond – 2021 Project Preview

## BP #2-5: Adult Transition Program (Annex) – Addition & Renovations



\*IMAGES AND RENDERINGS ARE FOR CONCEPTUAL PURPOSES ONLY





# 2020 Bond – 2021 Project Preview

## BP #2-5: Adult Transition Program (Annex) – Addition & Renovations



\*IMAGES AND RENDERINGS ARE FOR CONCEPTUAL PURPOSES ONLY



# 2020 Bond – 2021 Project Preview

## BP #2-5: Adult Transition Program (Annex) – Addition & Renovations



\*IMAGES AND RENDERINGS ARE FOR CONCEPTUAL PURPOSES ONLY





# 2020 Bond – 2021 Project Preview

## BP #2-5: Adult Transition Program (Annex) – Addition & Renovations

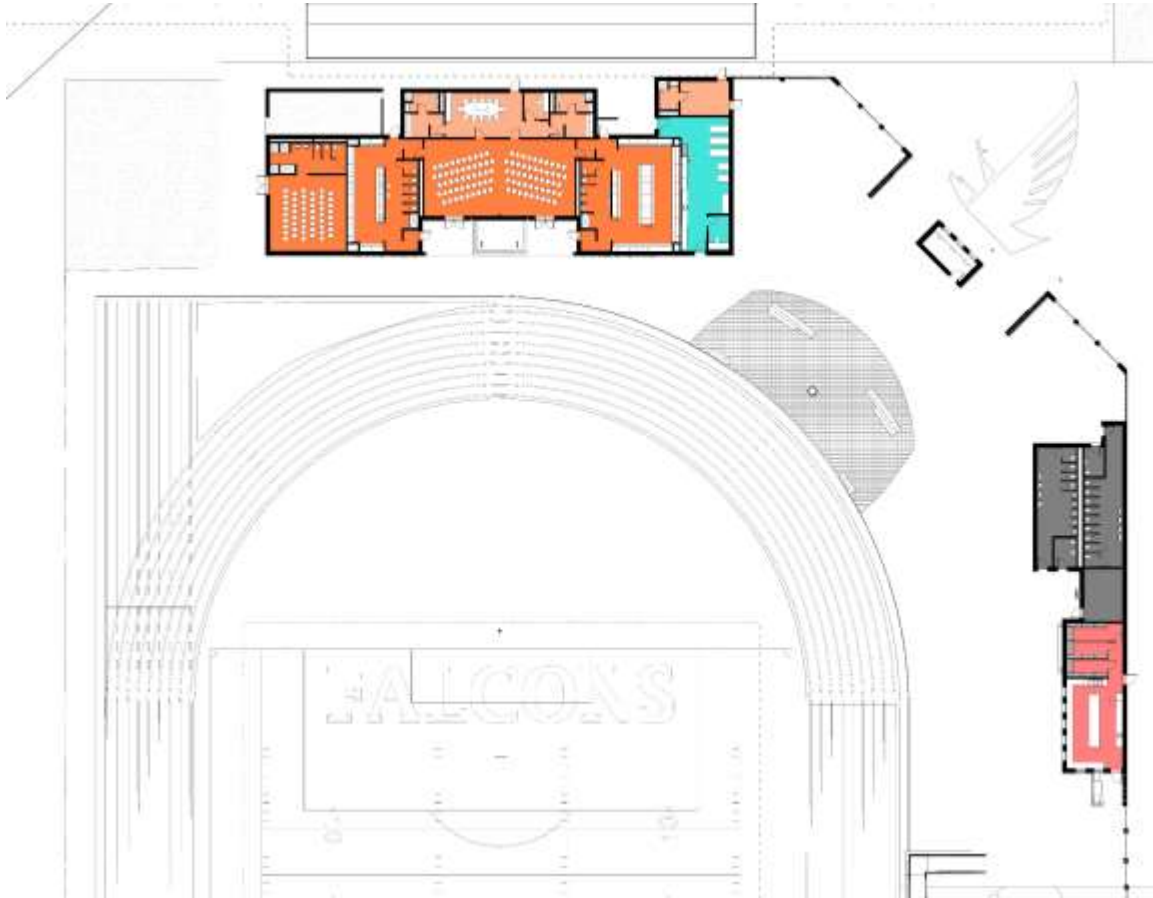


\*IMAGES AND RENDERINGS ARE FOR CONCEPTUAL PURPOSES ONLY



# 2020 Bond – 2021 Project Preview

## Future Bid Package: Groves High School | Stadium Buildings



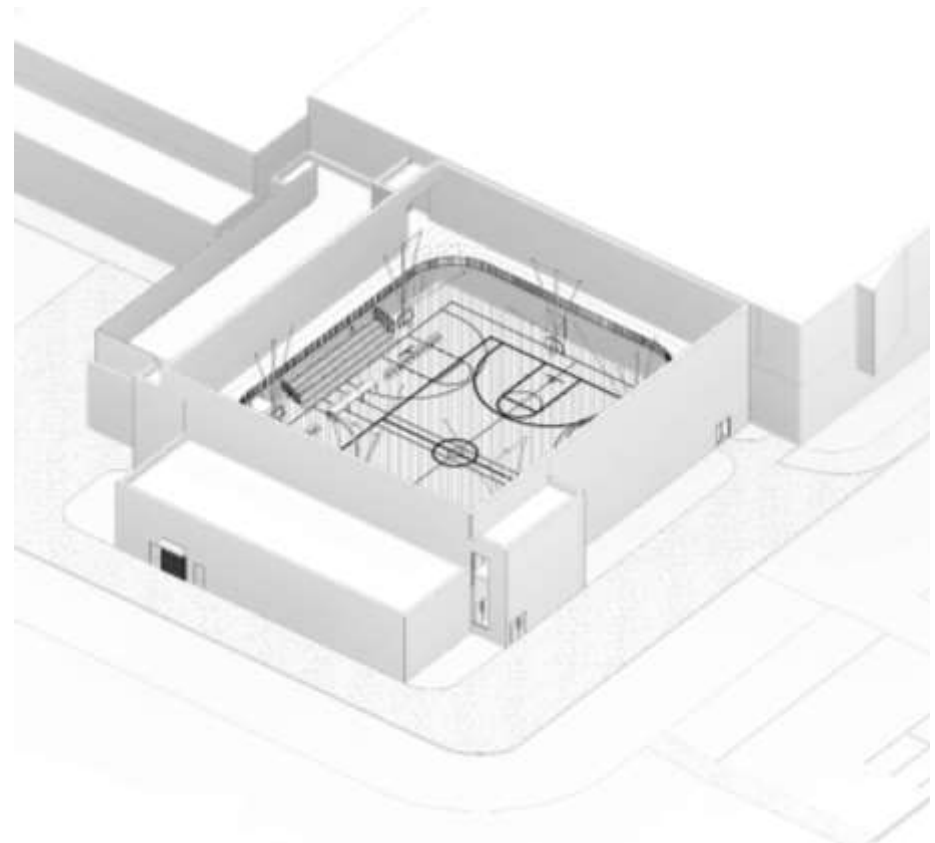
\*IMAGES AND RENDERINGS ARE FOR CONCEPTUAL PURPOSES ONLY





# 2020 Bond – 2021 Project Preview

## Future Bid Package: Groves High School | Auxiliary Gym

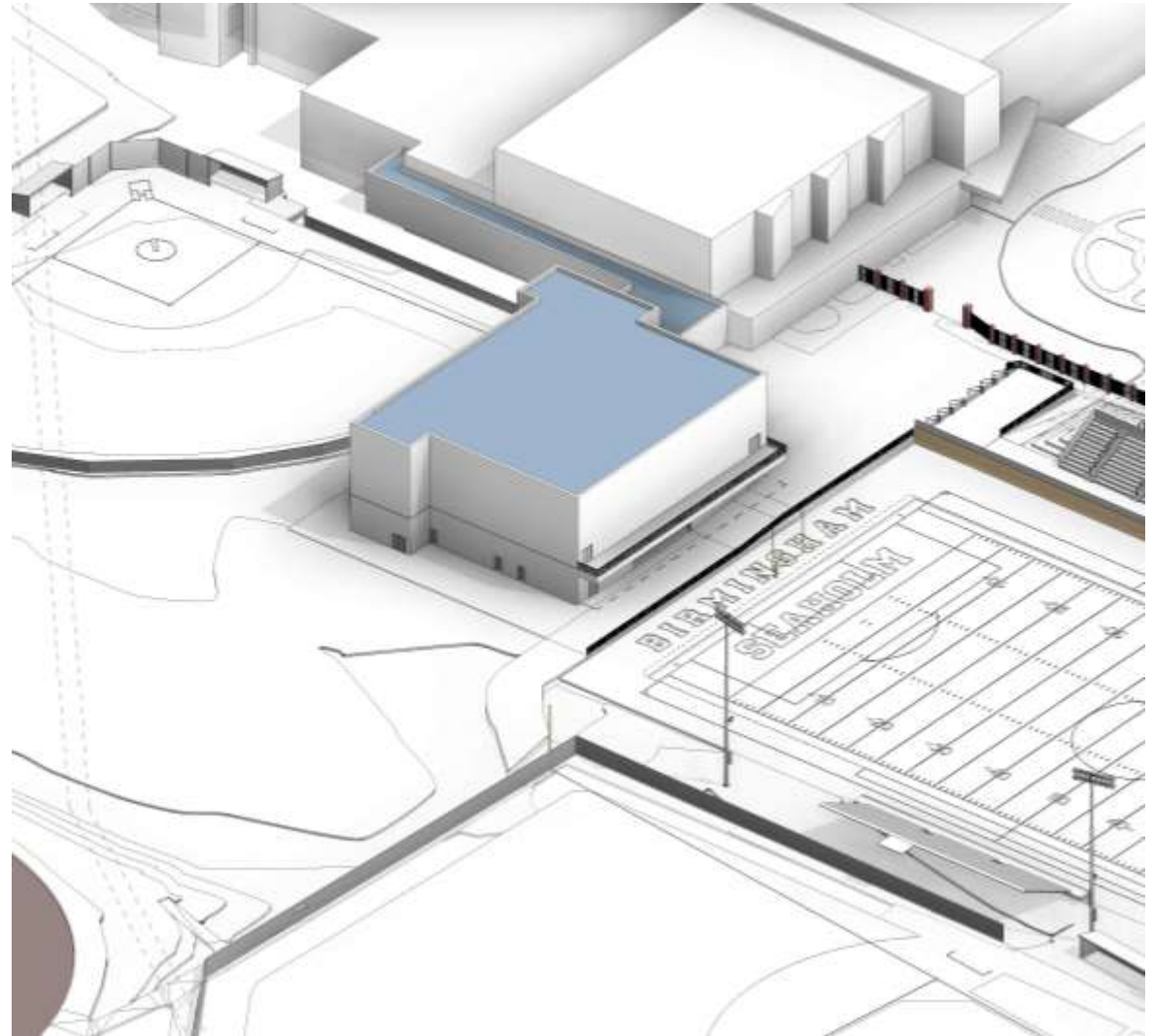
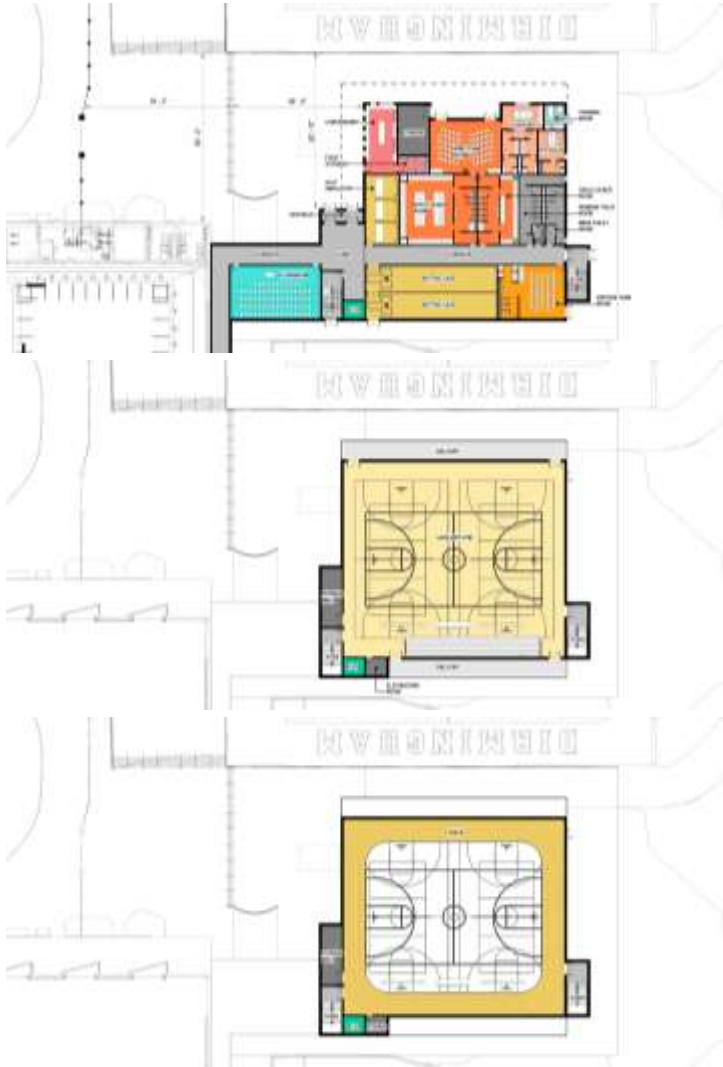


\*IMAGES AND RENDERINGS ARE FOR CONCEPTUAL PURPOSES ONLY



# 2020 Bond – 2021 Project Preview

## Future Bid Package: Seaholm High School | Auxiliary Gym



\*IMAGES AND RENDERINGS ARE FOR CONCEPTUAL PURPOSES ONLY



plante moran | cresa

Questions?