

# TODAY WE WILL

GO OVER GRAD REQUIREMENTS &  
COLLEGE ENTRANCE REQUIREMENTS

REVIEW  
GRADUATION  
REQS AND  
COLLEGE  
ADMISSIONS  
REQUIREMENTS

REVIEW *YOUR*  
GRAD REQS AND  
LOOK AT WHAT  
*YOU* STILL NEED  
TO TAKE

START YOUR  
PLAN FOR NEXT  
YEAR

*Coming later  
next WEEK . . . .*

*Lesson 2:  
Programs and  
your high school  
plan*



# Your LHS Counseling Team



**Ms. Kate Anderson**  
Last names A-D

andersonk785@edmonds.wednet.edu  
425.431.5207



**Mr. Ryan  
Hutchinson**

Last names: E-Han  
hutchinsonR@edmonds.wednet.edu  
425-431-5210



**Mr. Dylan Kochta**  
Last names Har-MB

kochtad329@edmonds.wednet.edu  
425.431.5206



**Mr. Bobby Hinnenkamp**  
Last names Mc-San

hinnenkampb@edmonds.wednet.edu  
425.431.5209



**Ms. Angelia Nivens**  
Last names Sar-Z

nivensa@edmonds.wednet.edu  
425.431.5204

*How can my counselor help me?*

LHS Counselors are certified school counselors - we are generalists.

# Graduation Requirements

## ART

Graduation requirement:  
1.0 Credit



## WORLD LANGUAGES

Not required for graduation  
Can use personal pathway of courses suited to  
your plans for after high school.



# Graduation Requirements

## ENGLISH

**Graduation requirement**

4.0 credits

## SOCIAL STUDIES

**Graduation requirement:**

3.5 credits

WA State History requirement met in US History,  
AP US History or in Middle School





# Graduation Requirements

## Math

### **Graduation requirements:**

3.0 credits

- Algebra 1
- Geometry
- 3rd Yr. Math: Financial Algebra, Algebra 2, or Algebra 2 Honors

Students with IEP plans will meet with their case managers and follow their path established with their case managers.

# Graduation Requirements

## SCIENCE

**Graduation requirement**  
3.0 credits

## CAREER & TECH ED

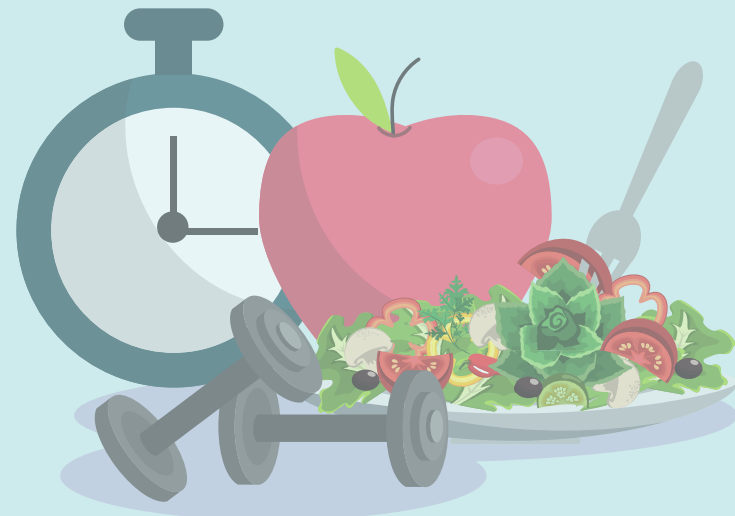
**Graduation requirement:**  
1.5 credits



# Graduation Requirements

## HEALTH

Graduation requirement:  
.5 credit



## PE

Graduation requirement:  
1.5 credits

# Graduation Requirements

## PERSONAL FINANCE

**Graduation requirement:**

.5 credit

- Take in 12th grade
- Accounting 1 or Financial Algebra are equivalencies

## GENERAL ELECTIVES

**Graduation requirement:**

5.5 credits





# If you want to go to a 4 Year College or University You Need:

- Consecutive 2 years/credits of one world language or ASL
- World Language test credits are also accepted
- Take math or a math-based science class in senior year



# WHAT ELSE DO I HAVE TO DO TO GRADUATE?

**1. Complete High School and Beyond Plan (HSBP) in Naviance**

**2. Pass State Tests - SBA English, Math, take Science**

**-OR-**

**Pass 2.0 credits in one CTE Pathway**

**-OR-**

**Pass college level English and math classes  
(CHS or Running Start)**

**-OR-**

**Take/pass Bridge to College English and Math**

**-OR-**

**Take/pass AP English/Math and/or  
earn passing grade on AP Tests**



# GRADUATION CTE PATHWAYS

## 2.0 CREDITS IN ONE PROGRAM

### PATHWAYS AT LHS

ASL/Sign Language Interpreter  
Business and Marketing  
Comp. Science and Engineering  
Culinary Arts  
Education and Human Services  
Healthcare Professions (1.0)  
Horticulture  
Sports Medicine , Biotechnology  
Visual Communications



### PATHWAYS THROUGH INTRADISTRICT CLASSES

Aerospace Manufacturing  
Architectural Design/CAD  
Automotive Technology  
Carpentry and Construction  
Healthcare Professions (1.0)

***ALL SNO-ISLE PROGRAMS***

[Career and Technical Pathways Home](#)

# Login to Skyward using your ID and password



Edmonds School District  
Equity. Engagement. Excellence.

Login ID:

Password:

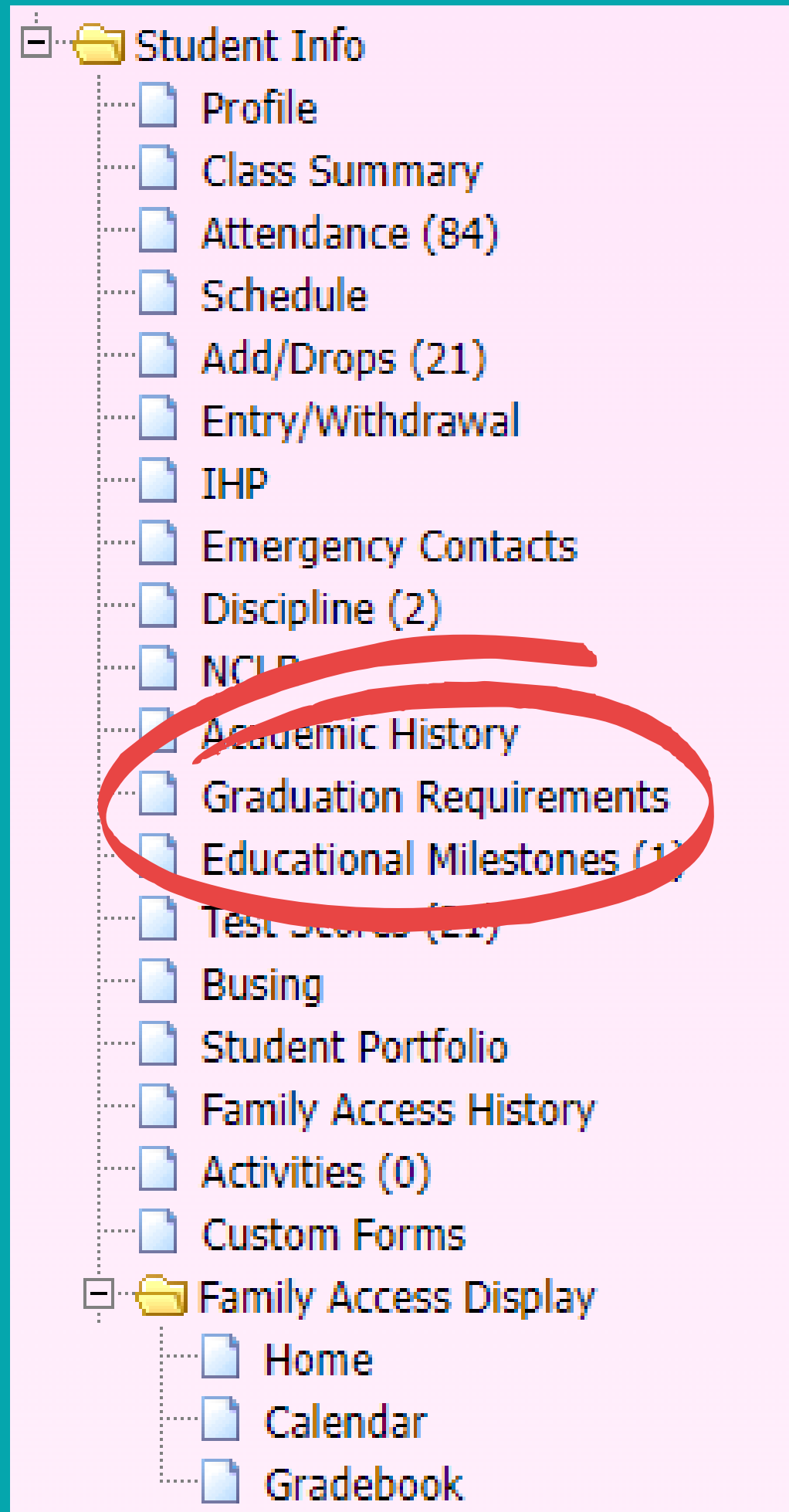
Sign In

[Forgot your Login/Password?](#)

05.21.10.00.11

Login Area: All Areas





# Click on "Graduation Requirements"



# HOW TO READ THE GRADUATION REQUIREMENTS SCREEN

1. "In progress" = classes you are in now
2. "Remaining" = what you still need
3. If "In Progress" and "Remaining" are the same amount = currently taking all you need
4. Once you pass "in progress" classes, the credits move to "Completed" column
5. If a class is remaining, and *not in progress* - you need to take/pass this course to graduate

**DISREGARD THE "FUTURE" COLUMN**





# ON TRACK TO GRADUATE?

**You should have...**



Credits Earned  
9th Graders



Credits Earned  
10th Graders



Credits Earned  
11th Graders

**If you have not earned these credits, please contact your counselor to talk about what credit retrieval options will be best for you.**

# 11th Grader - Grad Requirements in Skyward



Requirement Areas	Required	Comp	In Prog	Scheduled 2022-23	CTE Equiv	Remain	Status
<b>Total Credits</b> <a href="#">Show All Courses</a>	<b>24.000</b>	<b>15.000</b>	<b>3.000</b>			<b>9.000</b>	<b>In Progress</b>
<b>Arts</b> <a href="#">Show Courses</a>	<b>1.000</b>	<b>1.000</b>					<b>Complete</b>
<b>English</b>	<b>4.000</b>	<b>2.500</b>	<b>0.500</b>			<b>1.500</b>	<b>In Progress</b>
English 9 <a href="#">Show Courses</a>	1.000	1.000					Complete
English 10 <a href="#">Show Courses</a>	1.000	1.000					Complete
English 11 <a href="#">Show Courses</a>	1.000	0.500	0.500			0.500	In Progress
English 12	1.000					1.000	
<b>Social Studies</b>	<b>3.500</b>	<b>2.000</b>	<b>0.500</b>			<b>1.500</b>	<b>In Progress</b>
World History 9 <a href="#">Show Courses</a>	0.500	0.500					Complete
World History 10 <a href="#">Show Courses</a>	1.000	1.000					Complete
US History <a href="#">Show Courses</a>	1.000	0.500	0.500			0.500	In Progress
Senior History	1.000					1.000	
<b>Math</b>	<b>3.000</b>	<b>2.500</b>	<b>0.500</b>			<b>0.500</b>	<b>In Progress</b>
Integrated Math 1 / Algebra <a href="#">Show Courses</a>	1.000	1.000					Complete
Integrated Math 2 / Geometry <a href="#">Show Courses</a>	1.000	1.000					Complete
Math 3rd Yr <a href="#">Show Courses</a>	1.000	0.500	0.500			0.500	In Progress
<b>Science</b> <a href="#">Show Courses</a>	<b>3.000</b>	<b>2.500</b>	<b>0.500</b>			<b>0.500</b>	<b>In Progress</b>
<b>Health &amp; Fitness</b>	<b>2.000</b>	<b>2.000</b>					<b>Complete</b>
Physical Education <a href="#">Show Courses</a>	1.500	1.500					Complete
Health <a href="#">Show Courses</a>	0.500	0.500					Complete
<b>Career &amp; Technical Education</b> <a href="#">Show Courses</a>	<b>1.500</b>	<b>1.500</b>					<b>Complete</b>
<b>Personal Finance</b>	<b>0.500</b>					<b>0.500</b>	
<b>General Electives</b> <a href="#">Show Courses</a>	<b>5.500</b>	<b>1.000</b>	<b>1.000</b>			<b>4.500</b>	<b>In Progress</b>

# WHAT DO I DO NOW?

✓ Review your Graduation Requirements in Skyward and use them to figure out what classes you need to take next year.

✓ It is your responsibility to make sure you are meeting all graduation requirements!

✓ Refer back to these requirements as you go through the registration process.



# REGISTRATION TIMELINE

**1. GRADUATION REQUIREMENT LESSON - WHAT CLASSES/CREDITS DO YOU NEED TO GRADUATE? - Today's lesson!**

**2. LESSON ON HIGH SCHOOL PROGRAMS**

- **MARCH 9th IN ADVISORY**

**3.YOUR 4-YEAR PLAN - IF YOU HAVEN'T DONE IT ALREADY - DUE MARCH 14TH!**

**4. REGISTRATION INPUT AND SUBMISSION OF FOUR YEAR COURSE PLAN IN ENGLISH CLASSES**

- **MARCH 14TH - CURRENT 11TH GRADERS**
- **MARCH 15TH - CURRENT 10TH GRADERS**
- **MARCH 16TH - CURRENT 9TH GRADERS**

**IF STUDENTS DO NOT INPUT THEIR REQUESTS BY 3PM MARCH 20TH , YOUR COUNSELOR WILL HAVE TO DEVELOP A SCHEDULE FOR YOU BASED ON YOUR GRADUATION REQUIREMENTS AND CAN NOT BE CHANGED.**

**COUNSELORS WILL BE AT  
ALL LUNCHEES TO ANSWER  
QUESTIONS-COME VISIT US!**

