



Little Elm ISD

Regular Meeting

Monday, May 16, 2016 6:30 PM

Agenda of Regular Meeting

The Board of Trustees Little Elm ISD

A Regular Meeting of the Board of Trustees of Little Elm ISD will be held May 16, 2016, beginning at 6:30 PM in the Zellars Center for Learning and Leadership.

The subjects to be discussed or considered or upon which any formal action may be taken are as listed below. Items do not have to be taken in the order shown on this meeting notice.

Unless removed from the consent agenda, items identified within the consent agenda will be acted on at one time.

1. Call to Order Open Session in the Board Room at Zellars Center for Learning and Leadership on 300 Lobo Lane, Little Elm, Texas 75068.
2. Pledge of Allegiance
3. Invocation
4. Introduction and Roll Call
5. Citizen Input
6. Adopt the Canvassing Returns and Declaring Results of the 2016 Board Election 5
Presenter: Sonia F. Badillo
7. Approval of Minutes
A. Discuss and approve Regular Meeting Minutes for 5-09-2016 6
Presenter: Sonia F. Badillo
8. Superintendent Spotlight
A. Spotlight - Oak Point Elementary
Presenter: Debbie Clark
B. Community Partner Appreciation - Wildridge Community
Presenter: Pat Robbins
C. Community Partner Appreciation - CoServ
Presenter: Pat Robins
D. Little Elm High School - Students of the Month
Presenter: Renee Pentecost
E. Recognition of the LEHS Student Athlete Leadership Council
Presenter: Dr. Lowell H. Strike
F. Aspiring Leaders Institute Recognition
Presenter: Dr. Lowell H. Strike
9. Reports of the Superintendent
A. Sawko & Burroughs Attorneys at Law 12
Presenter: Dr. Lowell H. Strike

B. Operational Services Update	13
Presenter: Rod Reeves	
10. The Board will recess into Closed Meeting in Superintendent's Office as permitted by the Texas Open Meetings Act Code Subchapter 551.074, 551.082 and 551.072. The Board and Superintendent will discuss:	
A. Personnel - 551.074	
B. Student Safety 551.082	
C. Land - 551.072	
11. Action Items	
A. Discuss and approve Superintendent's Contract Extension	15
Presenter: LeAnna Harding	
B. Donation of Easement at Hackberry Elementary School	16
Presenter: Rod Reeves	
C. Donation Agreement with Valencia on the Lake, LP	20
Presenter: Rod Reeves	
D. Joint Resolution Relating to the Transfer of Students Between Little Elm Independent School District and the Denton Independent School District within a School Choice Area.	32
Presenter: Rod Reeves	
E. Discuss and approve Board Goals	
Presenter: LeAnna Harding	
12. Board President Comments	
Presenter: LeAnna Harding	
A. Trustee Christopher Williams' Recognition	
13. Board Comments	
14. Superintendent Comments	
15. Administration of Oath of Office to Newly Elected Trustees	
16. Adjournment	

If, during the course of the meeting, the Board of Trustees should determine that a closed meeting should be conducted, the Board will conduct a closed meeting in accordance with the Texas Open Meetings Act, Texas Government Code Section 551.001 et seq. The meeting will be held by the School Board at the date, hour, and place given in this Notice or as soon after the commencement of the meeting covered by this Notice as the School Board may conveniently meet in such closed or executive meeting or session concerning any and all purposes permitted by the Act, including, but not limited to the following sections and purposes:

Texas Government Code Section:

551.071	Private consultation with the Board's attorney.
551.072	Discussing purchase, exchange, lease, or value of real property.
551.073	Discussing negotiated contracts for prospective gifts or donations.
551.074	Discussing personnel or to hear complaints against personnel.
551.075	To confer with employees of the school district to receive information or to ask questions.

551.076	Considering the deployment, specific occasions, for or implementation of security personnel or devices.
551.082	Considering discipline of a public school child, or complaint or charge against personnel.
551.0821	Considering personally identifiable information about public school student.
551.083	Considering the standards, guidelines, terms, or conditions the board will follow, or will instruct its representatives to follow, in consultation with representatives of employees groups,
551.084	Excluding witnesses from a hearing.

Before any closed meeting is convened, the presiding officer will publicly identify the section or sections or the Act authorizing the closed meeting.

Should any final action, final decision, or final vote be required in the opinion of the School Board with regard to any matter considered in such closed or executive session, then the final action, final decision, or final vote shall be either:

- (a) in the open meeting covered by the Notice upon the reconvening of the public meeting, or
- (b) at a subsequent public meeting of the School Board upon notice thereof; as the School Board shall determine.

Superintendent

Original copy of this agenda was posted on the bulletin board at the Little Elm ISD Administration Building 72 hours prior to the scheduled meeting.

Sonia Badillo

Board Agenda Item

Little Elm Independent School District
300 Lobo Lane
Little Elm, Texas 75068

Board Mtg. Date	Reports of the Superintendent	Business Item	Consent Agenda	Reports, Routine Monthly	Action
5-16-2016	<input type="checkbox"/>	<input type="checkbox"/>	<input type="checkbox"/>	<input type="checkbox"/>	<input checked="" type="checkbox"/>
Subject:	CANVASSING RETURNS AND DECLARING RESULTS OF THE 2016 BOARD ELECTION				
Presenter or Contact Person:	Sonia F. Badillo, Superintendent Secretary.				
Policy/Code:	N/A				
Summary:	Canvassing Returns and Declaring Results of the 2016 Board Election				
Financial Implications:	There is no financial impact to the budget.				
Attachments:	Under Separate Cover				
Recommendation:	The Administration recommends the approval of Canvassing Returns and Declaring Results of the 2016 Board Election				
Motion:	I move that the Board approve the Canvassing Returns and Declaring Results of the 2016 Board Election				

Board Agenda Item

Little Elm Independent School District
300 Lobo Lane
Little Elm, Texas 75068

	Reports of the Superintendent <input type="checkbox"/>	Business Item <input type="checkbox"/>	Consent Agenda <input type="checkbox"/>	Reports, Routine Monthly <input type="checkbox"/>	Action <input checked="" type="checkbox"/>
Board Mtg. Date 5-16-2016					
Subject:	WORKSHOP BOARD MEETING MINUTES - 5-09-2016				
Presenter or Contact Person:	Sonia F. Badillo, Superintendent Secretary.				
Policy/Code:	N/A				
Summary:	Board Meeting Minutes for Ma 9, 2016.				
Financial Implications:	There is no financial impact to the budget.				
Attachments:	Meeting Minutes				
Recommendation:	The Administration recommends the approval of the Workshop Board Meeting Minutes for May 9, 2016.				
Motion:	I move that the Board approve the attached Workshop Board Meeting Minutes for May 9, 2016.				

Minutes of Workshop Meeting

The Board of Trustees Little Elm ISD

A Workshop Meeting of the Board of Trustees of Little Elm ISD was held Monday, May 9, 2016, beginning at 6:30 PM in the Zellars Center for Learning and Leadership.

PRESENT: Board President LeAnna Harding, Board Vice President Melissa Myers, Trustee Christopher Williams, Trustee David Montemayor, Trustee Jason Olson, Trustee Alejandro Flores and Superintendent Dr. Lowell H. Strike.

LATE: Board Secretary DeLeon English

1. Call to Order Open Session in the Board Room at Zellars Center for Learning and Leadership on 300 Lobo Lane, Little Elm, Texas 75068. Board President LeAnna Harding called the meeting to order at 6:30 pm.
2. Pledge of Allegiance
The Board led those in attendance to the Pledges of the United States and the Texas Flag.
3. Introduction and Roll Call
Ms. Sonia F. Badillo took roll call.
4. Citizen Input
There was no citizen input.
5. Approval of Minutes
 - A. Discuss and approve Regular Meeting Minutes - 4-18-2016
Board Vice President Melissa Myers made the first motion to approve the minutes as submitted. Trustee Jason Olson seconded the motion. The motion passed (5-0-1). Trustee Christopher Williams abstained from voting since he wasn't present on 4-18-2016.
6. Reports of the Superintendent
 - A. Director of CTE Announcement
Dr. Matthew Gutierrez introduced Dr. Tony Tipton as our new LEISD Director of CTE.
 - B. Professional Learning Report
Ms. Ashley Helms briefed the Board about the following:
LEISD Summer Learning Summit
 - Links are LIVE and Registration is ready in Eduphoria!
 - June 6-9, 2016
 - 2016-17 LEISD Comp Days

C. State Assessment Report

Dr. Ashley Glover shared with the Board the following:

December

- During the December administration of the English I and English II STAAR EOC assessments, approximately 80 students were identified to have a 0 for all short answer questions on the assessment. This was a dramatic increase from years past.
- Immediately Dr. Brown, (Director of Research, Accountability and Program Evaluation) identified this issue and determined 45 students who were statistically eligible and should be submitted for a rescore. Though the issue was with the testing vendor, ETS, LEISD was required to pay \$1,125 dollars of taxpayer money for students to be rescored. (not 45 names, but individual students).
- Still waiting for those results as large districts followed suit approximately 6 weeks later.

March

During the March English I/II assessments:

- Students completed tests, the system would not allow them to submit,
- Students logged out, they lost their answers.
- When students logged out to take breaks, when they returned, they lost parts of their test multiple times
- Tests showed the submit status, when students reported they had not submitted
- Test Coordinators continually attempted to contact ETS and TEA to get direction for these situations and were put on hold for over an hour or asked to leave a voicemail and never called back.

May

- The May administration of EOCs, including Algebra I, U.S History, and Biology were administered online without incident
- Multiple shipping and physical test booklet issues occurred as recently as this morning. Our department works diligently to keep these concerns from affecting the students, teachers and families.
- A letter was shared with the Texas Education Agency on April 28th outlining the difficulties our students, families and staff members faced.

D. The Toughexchange Process

Dr. Lowell H. Strike led the Toughexchange seminar. The seminar included the following:

Kick-Off Meeting

- Agenda
- How Thoughtexchange Helps
- Thoughtexchange Steps
- Questions Asked
- Terms of Use and Privacy Policy
- Sample Share
- Sample Discover
- Sample Web Report

7. The Board recessed into Closed Meeting at 7:27 pm in PL1 as permitted by the Texas Open Meetings Act Code Subchapter 551.074 and 551.072. The Board and Superintendent discussed:

A. Personnel - 551.074

B. Land - 551.072

The Board reconvened at 8:13 pm.

8. Action Items

- A. Discuss and approve the Donation of Easement to the Town of Little Elm for a Park Trail at Brent Elementary School

Mr. Rod Reeves approached the Board about the Donation of Easement to the Town of Little Elm for a Park Trail at Brent Elementary School.

Trustee Alejandro Flores made the first motion to approve the Donation of Easement to the Town of Little Elm for a Park Trail at Brent Elementary School as discussed in closed meeting. Board Vice President seconded the motion. The motion passed (6-0).

- B. Discuss and approve School Start Times

Dr. Cyndy Mika briefed the Board about School Start Times. In order to meet the school start times, we will need to add two bus routes. The bus contract will be 8 days shorter than in 2015-2016 so some of this will be absorbed. After discussing the times, Trustee Alejandro Flores made the first motion to approve the School Start Times as submitted. Trustee Christopher Williams seconded the motion. The motion passed (6-1). Board Vice President Melissa Myers voted against the motion.

- C. Discuss and approve EIE (LOCAL)

Mr. Ross Roberts shared with the Board the EIE (LOCAL). The past year 1st and 2nd grade moved to a standards-based report card. As a result, our promotion policy needs to be adjusted to reflect the change.

Trustee Christopher Williams made the first motion to approve EIE (LOCAL) as submitted. Trustee David Montemayor seconded the motion. The motion passed (7-0).

- D. Discuss and approve the Monthly Financial Report

Mr. Grant Anderson shared with the Board the Monthly financial Report.

Trustee Jason Olson made the first motion to approve the Monthly Financial Report. Board Secretary DeLeon English seconded the motion. The motion passed (7-0).

9. Consent Agenda

- A. Discuss and approve the Board Policy BE (Local)

- B. Discuss and approve Gifts and Donations

- C. Discuss and approve the Proposed 2016-17 Little Elm ISD Rezoning Plan

This item was pulled from Consent Agenda for clarification. After clarification on a slide, Board Vice President Melissa Myers made the first motion to approve the Proposed 2016-17 LEISD Rezoning Plan as submitted. Trustee Alejandro Flores seconded the motion. The motion passed (7-0),

Board Vice President Melissa Myers made the first motion to approve the Consent Agenda as submitted with the exception of Item C. Trustee David Montemayor seconded the motion. The motion passed (7-0).

10. Discussion Items

A. Board Goals

Ms. Myers will be sending the Goals to the Board. Objectives need to be worked on. Ms. Myers will send them tonight and they will be on next meeting's agenda under action items.

11. Board President Comments

Board President LeAnna Harding made the following comments:

- Very exciting week (baseball team)
- Swearing of board members
- Goodbye to Christopher Williams next week
- Great presentations

12. Board Comments

- Trustee Alejandro Flores congratulated the winners of the election
- Trustee Alejandro Flores invited Christopher Williams for invocation
- Trustee Jason Olson congratulated the winners on the election
- Trustee Jason Olson thanked PTAs and teachers on events
- Trustee Jason Olson thanked Hackberry for the Cystic Fibrosis Event
- Trustee Jason Olson congratulated the Baseball team for their accomplishments
- Trustee Jason Olson spoke about the band and choir concerts
- Board Secretary DeLeon English congratulated the winners of the elections
- Board Secretary DeLeon English congratulated the Baseball Team
- Board Secretary DeLeon English thanked staff for all they are doing
- Board Vice President Melissa Myers asked about Graduation Walk
- Board Vice President Melissa Myers congratulated the election winners
- Trustee David Montemayor thanked the community for their trust
- Trustee Christopher Williams thanked the administration, Dr. Strike and his team for all the hard work
- Trustee Christopher Williams congratulated the election winners

13. Superintendent Comments

Dr. Lowell H. Strike made the following comments:

- ALI Dinner
- Canvassing of votes
- Honor ALI participants
- Financial Summit
- Cystic Fibrosis walk at Hackberry very successful

14. Adjournment

Trustee Jason Olson made the first motion to approve the adjournment of the meeting. Trustee Christopher Williams seconded the motion. The motion passed (7-0). The meeting adjourned at 8:56 pm.

The minutes were approved on May 16, 2016.

Board President – LeAnna Harding

Board Secretary – DeLeon English

Board Agenda Item

Little Elm Independent School District
300 Lobo Lane
Little Elm, Texas 75068

Board Mtg. Date	Reports of the Superintendent	Business Item	Consent Agenda	Reports, Routine Monthly	Action
5-16-2016	<input checked="" type="checkbox"/>	<input type="checkbox"/>	<input type="checkbox"/>	<input type="checkbox"/>	<input type="checkbox"/>
Subject:	Sawko & Burroughs Attorneys at Law				
Presenter or Contact Person:	Dr. Lowell H. Strike, Superintendent.				
Policy/Code:	N/A				
Summary:	Sawko & Burroughs Attorneys at Law have represented LEISD in property tax collections for over 30 years. Mr. Burroughs would like to introduce himself and answer any questions, suggestions and open communications to our mutual benefit.				
Financial Implications:	N/A				
Attachments:	N/A				
Recommendation:	N/A				
Motion:	N/A				

Board Agenda Item

Little Elm Independent School District
300 Lobo Lane
Little Elm, Texas 75068

Board Mtg. Date 05-16-2016	Reports of the Superintendent <input checked="" type="checkbox"/>	Business Item <input type="checkbox"/>	Consent Agenda <input type="checkbox"/>	Reports, Routine Monthly <input type="checkbox"/>	Discussion <input type="checkbox"/>
Subject:	OPERATIONAL SERVICES UPDATE				
Presenter or Contact Person:	Rod Reeves, Executive Director for Operational Services				
Policy/Code:	NA				
Summary:	The Administration will provide an overview of Little Elm ISD Operational Services Department.				
Financial Implications:	NA				
Attachments:	Under separate cover				
Recommendation:	There is no recommendation required.				
Motion:	There is no motion required.				

Board Agenda Item

Little Elm Independent School District
300 Lobo Lane
Little Elm, Texas 75068

Board Mtg. Date 5-16-2016	Reports of the Superintendent <input type="checkbox"/>	Business Item <input type="checkbox"/>	Consent Agenda <input type="checkbox"/>	Reports, Routine Monthly <input type="checkbox"/>	Action <input checked="" type="checkbox"/>
Subject:	Superintendent's Contract Extension				
Presenter or Contact Person:	LeAnna Harding, Board President.				
Policy/Code:	N/A				
Summary:	Superintendents' Contract Extension to August 31, 2019.				
Financial Implications:	N/A				
Attachments:	N/A				
Recommendation:	The Administration recommends the approval of Superintendent's Contract Extension to August 31, 2019 as discussed in Closed Meeting.				
Motion:	I move that the Board approve the Superintendent's Contract Extension to August 31, 2019 as discussed in Closed Meeting.				

Board Agenda Item

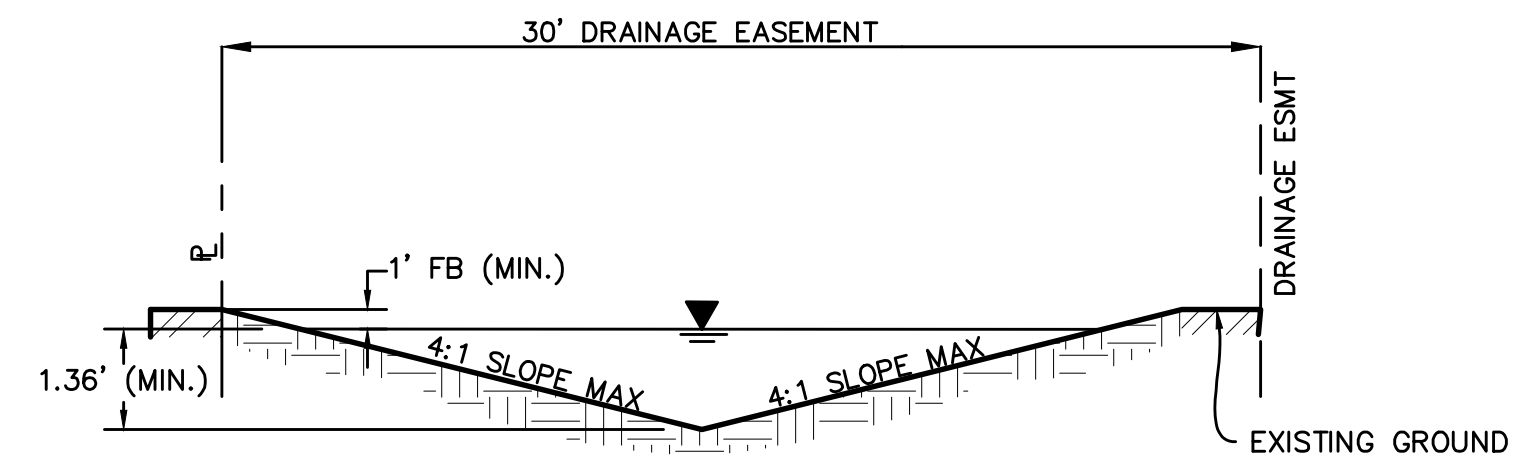
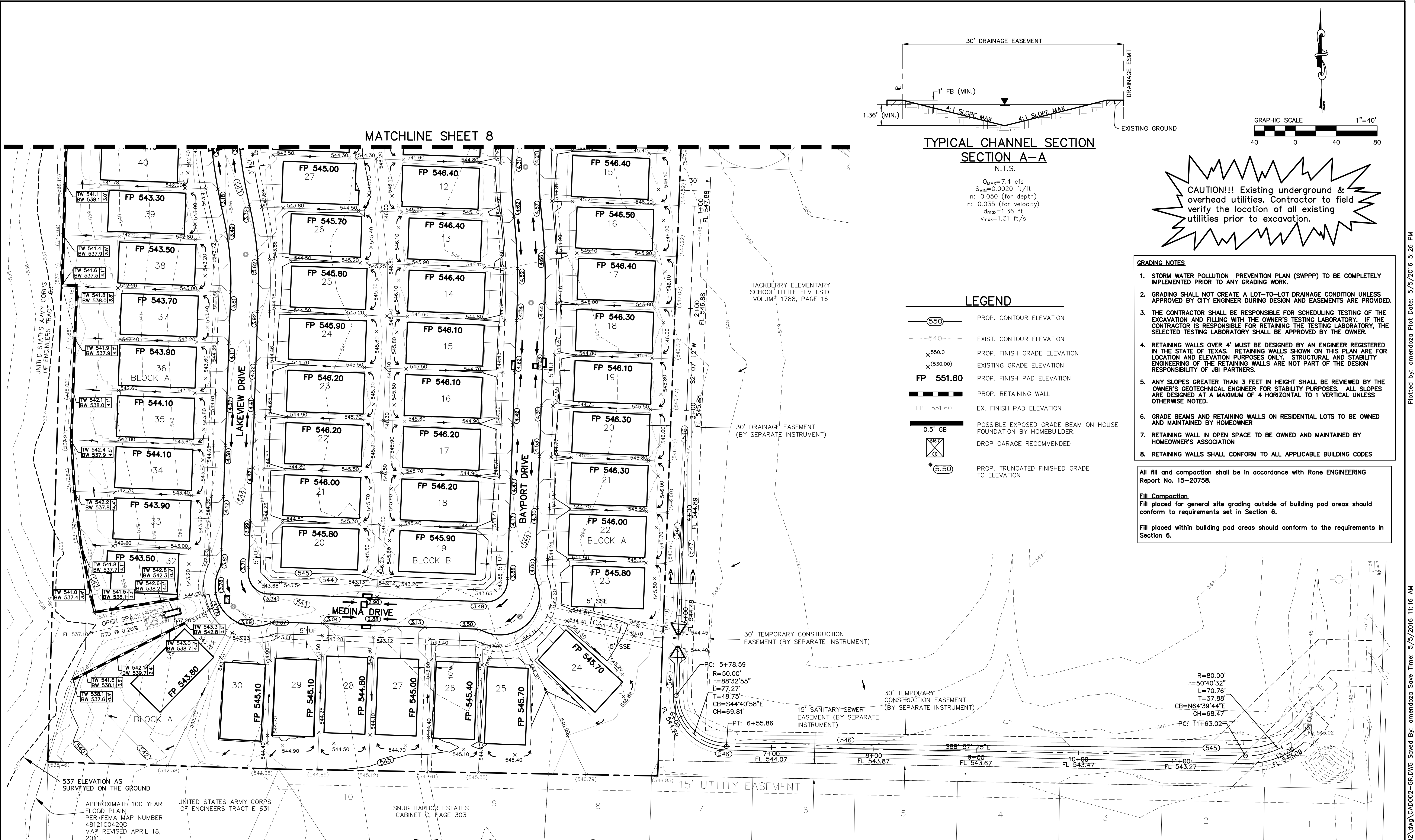
Little Elm Independent School District
300 Lobo Lane
Little Elm, Texas 75068

Board Mtg. Date	Reports of the Superintendent	Business Item	Action Item	Reports, Routine Monthly	Discussion
05-16-2016	<input type="checkbox"/>	<input type="checkbox"/>	<input checked="" type="checkbox"/>	<input type="checkbox"/>	<input type="checkbox"/>
Subject:	DONATION OF EASEMENT AT HACKBERRY ELEMENTARY SCHOOL				
Presenter or Contact Person:	Rod Reeves, Executive Director for Operational Services				
Policy/Code:	CDB (LEGAL)				
Summary:	The Developer DR Horton is requesting a utility easement for a development (Rivendale Pointe) adjacent to Hackberry Elementary School.				
Financial Implications:	There is no financial implication to Little Elm ISD. DR Horton will provide site improvements in the amount of easement donation cost.				
Attachments:	Rivendale Pointe Easement Exhibit Rivendale Pointe Grading Plan South				
Recommendation:	The Administration recommends the donation of easements for the development of Rivendale Pointe.				
Motion:	I move that the Board approve the donation of easements for the development of Rivendale Pointe.				

MARY LOUISE WILLIAMS
DOC. NO. 1995-R00195115
MARY LOUISE WILLIAMS
CC #95-R0019515 RPR



DRAINAGE, SANITARY SEWER & TEMPORARY
CONSTRUCTION EASEMENTS NEEDED FROM LITTLE ELM ISD



TYPICAL CHANNEL SECTION
SECTION A-A
N.T.S.

Q_{max}=7.4 cfs
S_{min}=0.0020 ft/ft
n: 0.050 (for depth)
n: 0.035 (for velocity)
d_{max}=1.36 ft
V_{max}=1.31 ft/s

CAUTION!!! Existing underground & overhead utilities. Contractor to field verify the location of all existing utilities prior to excavation.

LEGEND	
	PROP. CONTOUR ELEVATION
	EXIST. CONTOUR ELEVATION
	PROP. FINISH GRADE ELEVATION
	EXISTING GRADE ELEVATION
	PROP. FINISH PAD ELEVATION
	PROP. RETAINING WALL
	EX. FINISH PAD ELEVATION
	POSSIBLE EXPOSED GRADE BEAM ON HOUSE FOUNDATION BY HOMEOWNER.
	DROP GARAGE RECOMMENDED
	PROP. TRUNCATED FINISHED GRADE TO ELEVATION

- GRADING NOTES**
1. STORM WATER POLLUTION PREVENTION PLAN (SWPPP) TO BE COMPLETELY IMPLEMENTED PRIOR TO ANY GRADING WORK.
 2. GRADING SHALL NOT CREATE A LOT-TO-LOT DRAINAGE CONDITION UNLESS APPROVED BY CITY ENGINEER DURING DESIGN AND EASEMENTS ARE PROVIDED.
 3. THE CONTRACTOR SHALL BE RESPONSIBLE FOR SCHEDULING TESTING OF THE EXCAVATION AND FILLING WITH THE OWNER'S TESTING LABORATORY. IF THE CONTRACTOR IS RESPONSIBLE FOR RETAINING THE TESTING LABORATORY, THE SELECTED TESTING LABORATORY SHALL BE APPROVED BY THE OWNER.
 4. RETAINING WALLS OVER 4' MUST BE DESIGNED BY AN ENGINEER REGISTERED IN THE STATE OF TEXAS. RETAINING WALLS SHOWN ON THIS PLAN ARE FOR LOCATION AND ELEVATION PURPOSES ONLY. STRUCTURAL AND STABILITY ENGINEERING OF THE RETAINING WALLS ARE NOT PART OF THE DESIGN RESPONSIBILITY OF JBI PARTNERS.
 5. ANY SLOPES GREATER THAN 3 FEET IN HEIGHT SHALL BE REVIEWED BY THE OWNER'S GEOTECHNICAL ENGINEER FOR STABILITY PURPOSES. ALL SLOPES ARE DESIGNED AT A MAXIMUM OF 4 HORIZONTAL TO 1 VERTICAL UNLESS OTHERWISE NOTED.
 6. GRADE BEAMS AND RETAINING WALLS ON RESIDENTIAL LOTS TO BE OWNED AND MAINTAINED BY HOMEOWNER.
 7. RETAINING WALL IN OPEN SPACE TO BE OWNED AND MAINTAINED BY HOMEOWNER'S ASSOCIATION.
 8. RETAINING WALLS SHALL CONFORM TO ALL APPLICABLE BUILDING CODES.

All fill and compaction shall be in accordance with Rone ENGINEERING Report No. 15-20758.

Fill Compaction
Fill placed for general site grading outside of building pad areas should conform to requirements set in Section 6.

Fill placed within building pad areas should conform to the requirements in Section 6.

BENCHMARKS
BM 1) Pk nail set approximately 20 ft west and 8 feet north of the centerline intersection of Sycamore Drive and Mimosa Lane.
Elevation=547.40'

BM 2) One-half inch iron rod with red cap set south side of Sycamore Drive, approximately 35 feet west of the intersection of Sycamore Drive and Snug Harbor Circle.
Elevation=549.78'

BM 3) Pk nail set approximately 15 feet east and 5 feet south of the intersection of Snug Harbor Circle and Shirley Court.
Elevation=547.09'

NO.	REVISIONS DURING CONSTRUCTION	BY	DATE	NO.	REVISIONS DURING PLAN REVIEW	BY	DATE
1	REVISED GRADING ON LOTS 23-25, BLOCK A & ONSITE/OFFSITE EASEMENTS.	SAV	03/03/16				

DESIGNED BY:
ILG

DRAWN BY:
ABM

CHECKED BY:
JWK

The seal appearing on this document was authorized by Jeff W. Klement, P.E. 102173. Alteration of a sealed document without proper notification to the responsible engineer is an offense under the Texas Engineering Practice Act.

JBI PARTNERS

16301 Quorum Drive
Suite 200 B
Addicks, Texas 75001
Main 972.248.7676
Fax 972.248.1414
www.jbipartners.com

TBPE No. F-438 TBPLS No. 10076000

**GRADING PLAN
SOUTH
RIVENDALE POINTE**

City of Hackberry ETJ, Denton County, Texas

PROJECT NO.
CAD002

SHEET NO.
9

Board Agenda Item

Little Elm Independent School District
300 Lobo Lane
Little Elm, Texas 75068

	Reports of the Superintendent	Business Item	Action Item	Reports, Routine Monthly	Discussion
Board Mtg. Date 05-16-2016	<input type="checkbox"/>	<input type="checkbox"/>	<input checked="" type="checkbox"/>	<input type="checkbox"/>	<input type="checkbox"/>
Subject:	DONATION AGREEMENT WITH VALENCIA ON THE LAKE, L.P.				
Presenter or Contact Person:	Rod Reeves, Executive Director for Operational Services				
Policy/Code:	CDB (LEGAL) CDC (LOCAL)				
Summary:	Little Elm Independent School District is requesting to enter into a donation agreement with Valencia on the Lake, L.P.				
Financial Implications:	There is no financial implication to Little Elm ISD.				
Attachments:	LEISD - Resolution of Donation LEISD - Valencia First Amendment Valencia School Site Plan Valencia School Site Legal Description				
Recommendation:	The Administration recommends entering into a donation agreement with Valencia on the Lake, L.P.				
Motion:	I move that the Board approval to enter into a donation agreement with Valencia on the Lake, L.P.				

**FIRST AMENDMENT TO DONATION AGREEMENT BY AND BETWEEN LITTLE
ELM INDEPENDENT SCHOOL DISTRICT AND VALENCIA ON THE LAKE, L.P.**

This document ("First Amendment") amends that certain Donation Agreement (the "Agreement") dated August 29, 2014 (the "Effective Date"), by and between Valencia on the Lake, L.P., a Texas limited partnership ("Grantor"), and Little Elm Independent School District, a political subdivision of the State of Texas ("District") regarding one parcel containing 18.244 acres, more or less, in Denton County, Texas (the "Original Property"). Now, Therefore, in consideration of the promises herein made, and other good and valuable consideration, the receipt and sufficiency of which are hereby acknowledged, Grantor and District hereby amend the Agreement as follows:

1. The following language in Section 2 of the Agreement: "eighteen (18) acres" is hereby deleted and replaced with the following language: "twelve (12) acres".
2. The Closing Date in Section 8(a) of the Agreement is amended and extended until on or before 5:00 p.m. on May 18, 2016.
3. Exhibit "A" of the Agreement is hereby amended to replace the Legal Description of the Land with a new Exhibit "A", attached hereto and incorporated herein for all purposes.

Except as provided herein, the Agreement shall remain as originally executed. Any and all terms and provisions of the Agreement are hereby amended and modified wherever necessary, and even though not specifically addressed herein, so as to conform the Agreement to this First Amendment.

This First Amendment may be executed in two or more counterparts, each of which constitutes an original instrument and all of which constitutes one and the same instrument. A facsimile or reproduction of this First Amendment, which is executed by either party, has the same force and effect as if an original were executed by said party, and shall be recognized as such.

EXECUTED this _____ day of May, 2016.

GRANTOR:

VALENCIA ON THE LAKE, L.P., a Texas limited partnership

By: Valencia on the Lake GP, LLC, a Texas limited liability company,
Its General Partner

By: _____
Name: Mehrdad Moayedi
Title: Manager

DISTRICT:

LITTLE ELM INDEPENDENT SCHOOL DISTRICT

By: _____
Name: _____
Title: _____

EXHIBIT "A"

BEING that certain tract of land situated in the SANTIAGO GUARRARA SURVEY ~ ABSTRACT NUMBER 456, in Denton County, Texas, said tract being a part of that certain tract of land described in deed to Valencia on the Lake, L.P., recorded in Document Number 2007-8103 and Document Number 2007-41359, of the Real Property Records of Denton County, Texas (RPRDCT), and being more particularly described as follows:

COMMENCING at a 5/8-inch iron rod with cap marked "PETITT-RPLS 4087" found at a southwesterly corner of that certain tract of land described in deed to the Town of Little Elm, recorded in Document Number 2014-31379, RPRDCT (Rockhill Parkway - called 90-foot right-of-way), said iron rod also being located on the southwesterly right-of-way line of Riola Drive (called 50-foot right-of-way), according to Final Plat of Valencia on the Lake Phase 1, an addition to the Town of Little Elm, Denton County, Texas, recorded in Document Number 2015-245 of the Plat Records of Denton County, Texas (PRDCT), said iron rod also being the westernmost northwest corner of said Valencia on the Lake Phase 1;

THENCE North 22°35'16" West, with a southwesterly line of said Town of Little Elm tract, a distance of 20.00 feet to an "X" cut in concrete found at the intersection of the southerly right-of-way line of said Rockhill Parkway and the southwesterly right-of-way line of said Riola Drive;

THENCE South 67°24'44" West, with a southerly right-of-way line of said Rockhill Parkway, a distance of 175.52 feet to a 5/8-inch iron rod with cap marked "PETITT-RPLS 4087" found at the beginning of a tangent curve to the left;

THENCE Southwesterly with said curve which has a central angle of 16°24'37", a chord that bears South 59°12'25" West, a distance of 386.77 feet, a radius of 1355.00 feet, and an arc length of 388.09 feet to the end of said curve, a 5/8-inch iron rod with cap marked "PETITT-RPLS 4087" set for the POINT OF BEGINNING of herein described tract;

THENCE South 37°56'28" East, leaving said southerly right-of-way line of Rockhill Parkway, and over and across said Valencia on the Lake, L.P. tract, a distance of 531.27 feet to a 5/8-inch iron rod with cap marked "PETITT-RPLS 4087" set for corner located at the beginning of a tangent curve to the right;

THENCE continuing over and across said Valencia on the Lake, L.P. tract to 5/8-inch iron rods with caps marked "PETITT-RPLS 4087" set for corner, the following courses:

Southeasterly with said curve which has a central angle of 29°09'23", a chord that bears South 23°21'46" East, a distance of 364.97 feet, a radius of 725.00 feet, and an arc length of 368.93 feet to the end of said curve;

South 08°47'05" East, a distance of 58.11 feet;

South 85°34'15" West, a distance of 543.85 feet, said iron rod being located at the beginning of a tangent curve to the left;

Southwesterly with said curve which has a central angle of 15°25'18", a chord that bears South 77°51'36" West, a distance of 100.63 feet, a radius of 375.00 feet, and an arc length of 100.93 feet to the end of said curve;

South 70°08'57" West, a distance of 151.64 feet;

North 18°34'02" West, a distance of 165.01 feet, said iron rod being located at the beginning of a tangent curve to the left;

Northwesterly with said curve which has a central angle of 23°28'29", a chord that bears North 30°18'16" West, a distance of 207.49 feet, a radius of 510.00 feet, and an arc length of 208.95 feet to the end of said curve;

North 42°02'31" West, a distance of 113.65 feet;

And North 33°28'56" West, a distance of 30.00 feet, said iron rod being located on the southerly right-of-way line of said Rockhill Parkway, and being the beginning of a non-tangent curve to the left;

THENCE Northeasterly with said southerly right-of-way line, and with said curve which has a central angle of $07^{\circ}11'19''$, a chord that bears North $52^{\circ}55'24''$ East, a distance of 131.03 feet, a radius of 1045.00 feet, and an arc length of 131.11 feet to the end of said curve, an "X" cut in concrete found for corner;

THENCE South $42^{\circ}02'31''$ East, continuing with said southerly right-of-way line, a distance of 20.00 feet to a 5/8-inch iron rod with cap marked "PETITT-RPLS 4087" found for corner;

THENCE North $48^{\circ}16'01''$ East, continuing with said southerly right-of-way line, a distance of 50.00 feet to a 5/8-inch iron rod with cap marked "PETITT-RPLS 4087" found for corner;

THENCE North $42^{\circ}02'31''$ West, continuing with said southerly right-of-way line, a distance of 20.00 feet to an "X" cut in concrete found for corner;

THENCE North $47^{\circ}53'19''$ East, continuing with said southerly right-of-way line, a distance of 478.67 feet, to a 5/8-inch iron rod with cap marked "PETITT-RPLS 4087" found for corner at the beginning of a tangent curve to the right;

THENCE Northeasterly with said curve which has a central angle of $03^{\circ}06'48''$, a chord that bears North $49^{\circ}26'42''$ East, a distance of 73.62 feet, a radius of 1355.00 feet, and an arc length of 73.62 feet to the end of said curve, and to the POINT OF BEGINNING of herein described tract, containing an area of 12.332 acres of land.

RESOLUTION

LITTLE ELM INDEPENDENT SCHOOL DISTRICT

STATE OF TEXAS

§

§

COUNTY OF DENTON

§

WHEREAS, on August 29, 2014, the Little Elm Independent School District (“School District”) entered into a Donation Agreement with Valencia on the Lake, L.P., a Texas limited partnership (“Valencia”), whereby Valencia was to donate eighteen acres of real property, more or less, in Denton County to the School District in order for the School District to build a school on the Property (“Original Donation Property”); and

WHEREAS, the School District and Valencia desires to change the location of the property to a new location consisting of twelve acres, more or less, that is better suited for the School District’s intended purposes (“Revised Donation Property”) and desire to amend the Donation Agreement to reflect the new location.

NOW, THEREFORE, BE IT RESOLVED by the Board of Trustees of the Little Elm Independent School District that the District is hereby authorized to enter into a First Amendment to Donation Agreement with Valencia that will reflect the Revised Donation Property and extend the closing date.

BE IT FURTHER RESOLVED that the Board President, the Superintendent, and the Executive Director for Operational Services are each authorized to sign a First Amendment to the Donation Agreement, attached hereto as Exhibit “1” and incorporated herein for all purposes, on behalf of the School District, and any other document necessary to effectuate the purposes of this resolution.

BE IT FURTHER RESOLVED that the Board of Trustees desires to accept the donation of the Revised Donation Property and the Board President, Superintendent, and the Executive Director for Operational Services are each authorized to sign documents to accept the donation on behalf of the School District, including any addendum, closing statement, or any amendment thereto, and any other document necessary to close this transaction or effectuate the purposes of this resolution.

BE IT FURTHER RESOLVED that the School District Administration is authorized to take any and all appropriate action to accomplish and effectuate the purposes of this resolution.

PASSED, APPROVED AND ADOPTED BY THE BOARD OF TRUSTEES OF THE
LITTLE ELM INDEPENDENT SCHOOL DISTRICT, DENTON COUNTY, TEXAS on the
16th day of May, 2016.

LITTLE ELM INDEPENDENT SCHOOL DISTRICT

By: _____
LeAnna Harding
President of the Board

ATTEST:

By: _____
DeLeon English
Board Secretary

Exhibit “1”

First Amendment to Donation Agreement

[to be attached]

NOTES:

The bearings shown and recited hereon are referenced to the Texas State Plane Coordinate System -NAD 83 (CORS Texas North Central Zone No. 4202). All distances are surface distances with a surface to grid scale factor of 0.999849392677.

Title Commitment referenced for this survey issued by Fidelity National Title Insurance Company, GF No. 1403860-ICJA, Issue Date April 23, 2015, Effective Date April 12, 2015. Instruments referenced in Schedule B of the Commitments as they relate to this Survey are addressed as follows:

Schedule B, Item 1. ~ Subject property is part of referenced property (blanket description) set forth in Declaration of Covenants, Conditions and Restrictions for Valencia on the Lake Homeowners Association, Inc. recorded in Document No. 2015-34127, RPRDCT.

Schedule B, Item 10i. ~ Subject property is part of referenced property (blanket description) in Denton County Electric Cooperative, Inc. Right-of-Way Easement recorded in Volume 404, Page 308, RPRDCT, as affected by Agreement Defining Area Embraced within Easement recorded in Document No. 2015-41980, RPRDCT (Tract 1 and Tract 2 as defined in this document are shown plotted hereon).

Schedule B, Item 10j. ~ Subject property is part of referenced property (blanket description) in Denton County Electric Cooperative, Inc. Right-of-Way Easement recorded in Volume 404, Page 366, RPRDCT, as affected by Agreement Defining Area Embraced within Easement recorded in Document No. 2015-41980, RPRDCT (Tract 1 and Tract 2 as defined in this document are shown plotted hereon).

Schedule B, Item 10n. ~ 30'Denton County Electric Cooperative, Inc. Easement recorded in Volume 447, Page 529, RPRDCT, is not located on subject property (Tract No. 11, Parcel No. 1 is shown plotted hereon).

Schedule B, Item 10w. ~ Subject property is part of described area (blanket description) set forth in Memorandum of Amended and Restated Joint Development Agreement recorded in Instrument No. 2007-31063, RPRDCT.

Schedule B, Item 10y. ~ Subject property is part of described area (blanket description) set forth in Agreement recorded in Instrument No. 2013-135969, RPRDCT.

Schedule B, Item 10z. ~ Subject property is part of described area (blanket description) set forth in District Information Form recorded in Instrument No. 2008-25501, RPRDCT, Amendment recorded in Instrument No. 2008-56687, RPRDCT, Document recorded in Instrument No. 2008-80549, RPRDCT, Amendment recorded in Instrument No. 2008-108959, RPRDCT, and Amendment recorded in Instrument No. 2009-123483, RPRDCT.

Schedule B, Item 10aa. ~ Certification of OSSE Requiring Maintenance recorded in Instrument No. 2007-109103, RPRDCT references owner of subject property (no description).

Schedule B, Item 10bb. ~ Subject property is part of described area (blanket description) set forth in Special Warranty Deed recorded in Instrument No. 2007-41359, RPRDCT.

Schedule B, Item 10cc. ~ Subject property is part of described area (blanket description) set forth in Mineral Deed with Surface Waiver recorded in Instrument No. 2009-6417, RPRDCT.

Schedule B, Item 10dd. ~ Subject property is part of described area (blanket description) set forth in Subordination Agreement and Estoppel Certificate recorded in Instrument No. 2014-15313, RPRDCT.

Schedule B, Item 10ee. ~ Subject property is part of described area (blanket description) set forth in Major Improvement Landowner Agreement recorded in Instrument No. 2014-16629, RPRDCT.

Schedule B, Item 10ff. ~ Subject property is part of described area (blanket description) set forth in Agreement Regarding Conveyance of Right of Redemption and Waiver of Agricultural Valuation - Valencia PID recorded in Instrument No. 2014-16634, RPRDCT.

Schedule B, Item 10hh. ~ Subject property is part of described area (blanket description) set forth in Memorandum of Contract recorded in Instrument No. 2014-101488, RPRDCT.

Schedule B, Item 10ii. ~ Subject property is part of described area (blanket description) set forth in Memorandum of Contract recorded in Instrument No. 2014-101489, RPRDCT.

Schedule B, Item 10jj. ~ Subject property is part of described area (blanket description) set forth in Memorandum of Contract recorded in Instrument No. 2014-101490, RPRDCT.

Schedule B, Item 10kk. ~ Subject property is part of described area (blanket description) set forth in Memorandum of Contract recorded in Instrument No. 2014-101491, RPRDCT.

Schedule B, Item 10ll. ~ Subject property is part of described area (blanket description) set forth in Memorandum of Contract recorded in Instrument No. 2014-101492, RPRDCT.

Schedule B, Item 10mm. ~ Subject property is part of described area (blanket description) set forth in Memorandum of Natural Gas Service Agreement recorded in Instrument No. 2015-21164, RPRDCT.

** Subject property lies within Zone X (un-shaded area), defined as "Areas determined to be outside the 0.2% annual chance floodplain"; according to Federal Emergency Management Area Flood Insurance Rate Map for Denton County, Texas and Incorporated Areas ~ Map Number 48121C04106, revision date April 18, 2011. Zone X (un-shaded area), Zone X (shaded area), and Zone AE Floodplain lines plotted hereon are graphically shown according to said map.

SURVEYOR'S CERTIFICATE

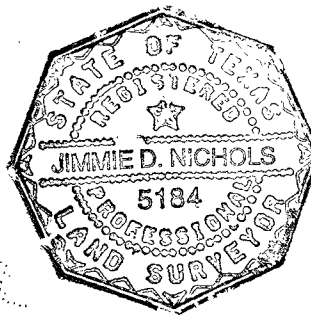
To: Valencia on the Lake, L.P.; Fidelity National Title Insurance Company; and Little Elm Independent School District;

This is to certify that this map or plat and the survey on which it is based were made in accordance with the 2016 Minimum Standard Detail Requirements for ALTA/NSPS Land Title Surveys, jointly established and adopted by ALTA and NSPS, and includes items 1, 2, 3, 4, 7, 8, 9, 13, 14, 16, and 17 of Table A thereof. The field work was completed on April 26, 2016.

Date of Plat or Map: APRIL 29, 2016

FOR PETITT BARRAZA LLC:

Jimmie D. Nichols
Jimmie D. Nichols, RPLS No. 5184



ALTA/NSPS LAND TITLE SURVEY 12.332 ACRE TRACT

SITUATED IN THE
SANTIAGO GUARRARA SURVEY ~ ABSTRACT NO. 456
DENTON COUNTY, TEXAS

PETITT BARRAZA
ENGINEERING PLANNING SURVEYING
TBP# FIRM REGISTRATION NO. 1488
TBP# FIRM REGISTRATION NO. 101068
1651 N. Glenville Drive, Suite 208
Richardson, Texas 75081
www.petittbarraza.com
Tel. No. (214) 221-9955
Fax No. (214) 340-3550
nichols@petittbarraza.com

DATE: APRIL 2016 SCALE: 1"= 100'

JOB NO. 06017-01

SHEET 1 OF 1

LEGAL DESCRIPTION

BEING that certain tract of land situated in the SANTIAGO GUARRARA SURVEY ~ ABSTRACT NUMBER 456, in Denton County, Texas, said tract being a part of that certain tract of land described in deed to Valencia on the Lake, L.P., recorded in Document Number 2007-8103 and Document Number 2007-41359, of the Real Property Records of Denton County, Texas (RPRDCT), and being more particularly described as follows:

COMMENCING at a 5/8-inch iron rod with cap marked "PETITT-RPLS 4087" found at a southwesterly corner of that certain tract of land described in deed to the Town of Little Elm, recorded in Document Number 2014-31379, RPRDCT (Rockhill Parkway - called 90-foot right-of-way), said iron rod also being located on the southwesterly right-of-way line of Riola Drive (called 50-foot right-of-way), according to Final Plat of Valencia on the Lake Phase 1, an addition to the Town of Little Elm, Denton County, Texas, recorded in Document Number 2015-245 of the Plat Records of Denton County, Texas (PRDCT), said iron rod also being the westernmost northwest corner of said Valencia on the Lake Phase 1;

THENCE North 22°35'16" West, with a southwesterly line of said Town of Little Elm tract, a distance of 20.00 feet to an "X" cut in concrete found at the intersection of the southerly right-of-way line of said Rockhill Parkway and the southwesterly right-of-way line of said Riola Drive;

THENCE South 67°24'44" West, with a southerly right-of-way line of said Rockhill Parkway, a distance of 175.52 feet to a 5/8-inch iron rod with cap marked "PETITT-RPLS 4087" found at the beginning of a tangent curve to the left;

THENCE Southwesterly with said curve which has a central angle of 16°24'37", a chord that bears South 59°12'25" West, a distance of 386.77 feet, a radius of 1355.00 feet, and an arc length of 388.09 feet to the end of said curve, a 5/8-inch iron rod with cap marked "PETITT-RPLS 4087" set for the POINT OF BEGINNING of herein described tract;

THENCE South 37°56'28" East, leaving said southerly right-of-way line of Rockhill Parkway, and over and across said Valencia on the Lake, L.P. tract, a distance of 531.27 feet to a 5/8-inch iron rod with cap marked "PETITT-RPLS 4087" set for corner located at the beginning of a tangent curve to the right;

THENCE continuing over and across said Valencia on the Lake, L.P. tract to 5/8-inch iron rods with caps marked "PETITT-RPLS 4087" set for corner, the following courses:

Southeasterly with said curve which has a central angle of 29°09'23", a chord that bears South 23°21'46" East, a distance of 364.97 feet, a radius of 725.00 feet, and an arc length of 368.93 feet to the end of said curve;

South 08°47'05" East, a distance of 58.11 feet;

South 85°34'15" West, a distance of 543.85 feet, said iron rod being located at the beginning of a tangent curve to the left;

Southwesterly with said curve which has a central angle of 15°25'18", a chord that bears South 77°51'36" West, a distance of 100.63 feet, a radius of 375.00 feet, and an arc length of 100.93 feet to the end of said curve;

South 70°08'57" West, a distance of 151.64 feet;

North 18°34'02" West, a distance of 165.01 feet, said iron rod being located at the beginning of a tangent curve to the left;

Northwesterly with said curve which has a central angle of 23°28'29", a chord that bears North 30°18'16" West, a distance of 207.49 feet, a radius of 510.00 feet, and an arc length of 208.95 feet to the end of said curve;

North 42°02'31" West, a distance of 113.65 feet;

And North 33°28'56" West, a distance of 30.00 feet, said iron rod being located on the southerly right-of-way line of said Rockhill Parkway, and being the beginning of a non-tangent curve to the left;

THENCE Northeasterly with said southerly right-of-way line, and with said curve which has a central angle of 07°11'19", a chord that bears North 52°55'24" East, a distance of 131.03 feet, a radius of 1045.00 feet, and an arc length of 131.11 feet to the end of said curve, an "X" cut in concrete found for corner;

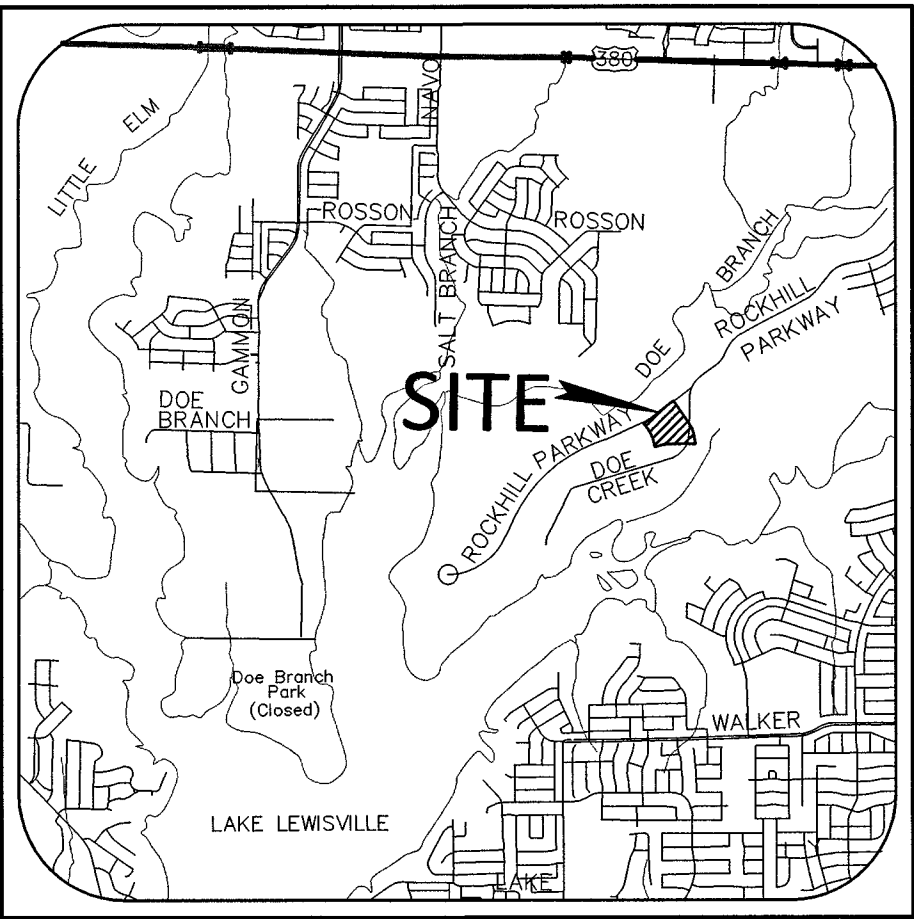
THENCE South 42°02'31" East, continuing with said southerly right-of-way line, a distance of 20.00 feet to a 5/8-inch iron rod with cap marked "PETITT-RPLS 4087" found for corner;

THENCE North 48°16'01" East, continuing with said southerly right-of-way line, a distance of 50.00 feet to a 5/8-inch iron rod with cap marked "PETITT-RPLS 4087" found for corner;

THENCE North 42°02'31" West, continuing with said southerly right-of-way line, a distance of 20.00 feet to an "X" cut in concrete found for corner;

THENCE North 47°53'19" East, continuing with said southerly right-of-way line, a distance of 478.67 feet, to a 5/8-inch iron rod with cap marked "PETITT-RPLS 4087" found for corner at the beginning of a tangent curve to the right;

THENCE Northeasterly with said curve which has a central angle of 03°06'48", a chord that bears North 49°26'42" East, a distance of 73.62 feet, a radius of 1355.00 feet, and an arc length of 73.62 feet to the end of said curve, and to the POINT OF BEGINNING of herein described tract, containing an area of 12.332 acres of land.



VICINITY MAP

NOT TO SCALE

LEGEND

PRDCT	PLAT RECORDS, DENTON COUNTY, TEXAS
RPRDCT	REAL PROPERTY RECORDS, DENTON COUNTY, TEXAS
ESMT	EASEMENT
P.L.	PROPERTY LINE
BL	BUILDING SETBACK LINE
5/8" CIRS	5/8-INCH IRON ROD W/CAP MARKED "PETITT-RPLS 4087" SET (UNLESS NOTED OTHERWISE)
5/8" CIRF	5/8-INCH IRON ROD W/CAP MARKED "PETITT-RPLS 4087" FOUND (UNLESS NOTED OTHERWISE)
IRF	IRON ROD FOUND
CIRF	CAPPED IRON ROD FOUND
P.O.B.	POINT OF BEGINNING
R.O.W.	RIGHT-OF-WAY
RCP	REINFORCED CONCRETE PIPE
CMP	CORRUGATED METAL PIPE

LEGEND

—	BOUNDARY LINE
—	FENCE
—	CONCRETE PAVEMENT
—	GRAVEL PAVEMENT
—	POWER POLE (PP)
—	GUY WIRE (GW)
—	LIGHT POLE (LP)
—	BURIED PIPELINE MARKER (UPM)
—	BURIED GAS LINE MARKER (UGM)
—	BURIED FIBER OPTIC MARKER (FOM)
—	SANITARY SEWER MANHOLE (SSMH)
—	CLEAN OUT
—	OVERHEAD POWER LINE
—	GAS VALVE
—	WATER VALVE (WV)
—	WATER METER (WM)
—	GAS METER (GM)
—	FIRE HYDRANT (FH)
—	SIGN
—	TELEPHONE PEDESTAL (TPED)

LEGAL DESCRIPTION

BEING that certain tract of land situated in the SANTIAGO GUARRARA SURVEY ~ ABSTRACT NUMBER 456, in Denton County, Texas, said tract being a part of that certain tract of land described in deed to Valencia on the Lake, L.P., recorded in Document Number 2007-8103 and Document Number 2007-41359, of the Real Property Records of Denton County, Texas (RPRDCT), and being more particularly described as follows:

COMMENCING at a 5/8-inch iron rod with cap marked "PETITT-RPLS 4087" found at a southwesterly corner of that certain tract of land described in deed to the Town of Little Elm, recorded in Document Number 2014-31379, RPRDCT (Rockhill Parkway - called 90-foot right-of-way), said iron rod also being located on the southwesterly right-of-way line of Riola Drive (called 50-foot right-of-way), according to Final Plat of Valencia on the Lake Phase 1, an addition to the Town of Little Elm, Denton County, Texas, recorded in Document Number 2015-245 of the Plat Records of Denton County, Texas (PRDCT), said iron rod also being the westernmost northwest corner of said Valencia on the Lake Phase 1;

THENCE North 22°35'16" West, with a southwesterly line of said Town of Little Elm tract, a distance of 20.00 feet to an "X" cut in concrete found at the intersection of the southerly right-of-way line of said Rockhill Parkway and the southwesterly right-of-way line of said Riola Drive;

THENCE South 67°24'44" West, with a southerly right-of-way line of said Rockhill Parkway, a distance of 175.52 feet to a 5/8-inch iron rod with cap marked "PETITT-RPLS 4087" found at the beginning of a tangent curve to the left;

THENCE Southwesterly with said curve which has a central angle of 16°24'37", a chord that bears South 59°12'25" West, a distance of 386.77 feet, a radius of 1355.00 feet, and an arc length of 388.09 feet to the end of said curve, a 5/8-inch iron rod with cap marked "PETITT-RPLS 4087" set for the POINT OF BEGINNING of herein described tract;

THENCE South 37°56'28" East, leaving said southerly right-of-way line of Rockhill Parkway, and over and across said Valencia on the Lake, L.P. tract, a distance of 531.27 feet to a 5/8-inch iron rod with cap marked "PETITT-RPLS 4087" set for corner located at the beginning of a tangent curve to the right;

THENCE continuing over and across said Valencia on the Lake, L.P. tract to 5/8-inch iron rods with caps marked "PETITT-RPLS 4087" set for corner, the following courses:

Southeasterly with said curve which has a central angle of 29°09'23", a chord that bears South 23°21'46" East, a distance of 364.97 feet, a radius of 725.00 feet, and an arc length of 368.93 feet to the end of said curve;

South 08°47'05" East, a distance of 58.11 feet;

South 85°34'15" West, a distance of 543.85 feet, said iron rod being located at the beginning of a tangent curve to the left;

Southwesterly with said curve which has a central angle of 15°25'18", a chord that bears South 77°51'36" West, a distance of 100.63 feet, a radius of 375.00 feet, and an arc length of 100.93 feet to the end of said curve;

South 70°08'57" West, a distance of 151.64 feet;

North 18°34'02" West, a distance of 165.01 feet, said iron rod being located at the beginning of a tangent curve to the left;

Northwesterly with said curve which has a central angle of 23°28'29", a chord that bears North 30°18'16" West, a distance of 207.49 feet, a radius of 510.00 feet, and an arc length of 208.95 feet to the end of said curve;

North 42°02'31" West, a distance of 113.65 feet;

And North 33°28'56" West, a distance of 30.00 feet, said iron rod being located on the southerly right-of-way line of said Rockhill Parkway, and being the beginning of a non-tangent curve to the left;

THENCE Northeasterly with said southerly right-of-way line, and with said curve which has a central angle of 07°11'19", a chord that bears North 52°55'24" East, a distance of 131.03 feet, a radius of 1045.00 feet, and an arc length of 131.11 feet to the end of said curve, an "X" cut in concrete found for corner;

THENCE South 42°02'31" East, continuing with said southerly right-of-way line, a distance of 20.00 feet to a 5/8-inch iron rod with cap marked "PETITT-RPLS 4087" found for corner;

THENCE North 48°16'01" East, continuing with said southerly right-of-way line, a distance of 50.00 feet to a 5/8-inch iron rod with cap marked "PETITT-RPLS 4087" found for corner;

THENCE North 42°02'31" West, continuing with said southerly right-of-way line, a distance of 20.00 feet to an "X" cut in concrete found for corner;

THENCE North 47°53'19" East, continuing with said southerly right-of-way line, a distance of 478.67 feet, to a 5/8-inch iron rod with cap marked "PETITT-RPLS 4087" found for corner at the beginning of a tangent curve to the right;

THENCE Northeasterly with said curve which has a central angle of 03°06'48", a chord that bears North 49°26'42" East, a distance of 73.62 feet, a radius of 1355.00 feet, and an arc length of 73.62 feet to the end of said curve, and to the POINT OF BEGINNING of herein described tract, containing an area of 12.332 acres of land.

Board Agenda Item

Little Elm Independent School District
300 Lobo Lane
Little Elm, Texas 75068

Board Mtg. Date	Reports of the Superintendent	Business Item	Action Item	Reports, Routine Monthly	Discussion
05-16-2016	<input type="checkbox"/>	<input type="checkbox"/>	<input checked="" type="checkbox"/>	<input type="checkbox"/>	<input type="checkbox"/>
Subject:	JOINT RESOLUTION RELATING TO THE TRANSFER OF STUDENTS BETWEEN LITTLE ELM INDEPENDENT SCHOOL DISTRICT AND THE DENTON INDEPENDENT SCHOOL DISTRICT WITHIN A SCHOOL CHOICE AREA.				
Presenter or Contact Person:	Rod Reeves, Executive Director for Operational Services				
Policy/Code:	FDA (LEGAL)				
Summary:	Little Elm ISD Administration is requesting the approval of a joint resolution with Denton ISD for the transfer of students within a school choice area. There are portions of Denton ISD that are within the Valencia on the Lakes development and there are portions of Little Elm ISD that are within the Paloma Creek South developments. This agreement will allow parents/guardians to choose which District to attend.				
Financial Implications:	Little Elm ISD would receive additional funding if students from Denton ISD attend a Little Elm ISD school. Conversely, Little Elm ISD would lose the WADA from those attending Denton ISD.				
Attachments:	Joint Resolution between Little Elm ISD and Denton ISD for the transfer of students in a school choice area.				
Recommendation:	The Administration recommends approval of the joint resolution with Denton ISD for the transfer of students within a school choice area.				
Motion:	I move that the Board approve the joint resolution with Denton ISD for the transfer of students within a school choice area.				

THE STATE OF TEXAS §
§
COUNTY OF DENTON §

The Little Elm Independent School District (“LEISD”) and the Denton Independent School District (“DISD”) (collectively, the “Districts”) derive legal status from the Constitution of the State of Texas and the Texas Education Code as passed and amended by the Legislature of Texas.

WHEREAS, Texas Education Code, Section 25.035 provides that “[t]he boards of trustees of two or more adjoining school districts...may, by agreement...arrange for the transfer and assignment of any student from the jurisdiction of one board to that of another”; and

WHEREAS, Texas Education Code, Section 25.032 requires that a board make transfer decisions on an individual basis and prohibits the consideration of any matter relating to the national origin of the student or the student's ancestral language by a board in making transfer decisions; and

WHEREAS, Texas Education Code, Section 25.035 states, “[i]n the case of the transfer and assignment of a student under this section, the participating governing boards shall also agree to the transfer of school funds or other payments proportionate to the transfer of attendance”; and

WHEREAS, LEISD and DISD are adjoining districts and the geographical boundaries between LEISD and DISD are now being inundated with a massive influx of new residents, with new developments arising which are partially within both Districts, and rendering the school age residents being closer to primary schools in one district and closer to secondary schools in the other district; and

WHEREAS, LEISD and DISD are both devoted to offering a proper public education to all of their constituents, and believe that in certain circumstances it would be in the best interest of the residents of certain areas to allow them to elect which school district their students should attend; and

WHEREAS, an area within Denton County near the boundaries of LEISD and DISD, will be designated to allow parents and guardians residing within said area to choose whether their students shall attend LEISD or DISD schools (the “School Choice Area”); and

WHEREAS, renditions of the proposed School Choice Area, which are depicted by a metes and bounds description in Exhibit “A” and by a map as shown in Exhibit “B” and incorporated herein by reference, describe the recommended School Choice Area; and

WHEREAS, this Joint Resolution is not for the purpose of seeking or approving annexation or detachment of land from or for either of the Districts, but rather for the purpose of enhancing educational opportunity for students.

NOW THEREFORE, BE IT RESOLVED, the LEISD and DISD Boards of Trustees authorize the transfer of students residing within the School Choice Area from either LEISD or DISD, upon receiving a petition in writing from the parent, guardian, or person having lawful control of the student, to either LEISD or DISD upon approval by the receiving district’s Board of Trustees as contemplated in Texas Education Code, Sections 25.032 and 25.036.

BE IT FURTHER RESOLVED, this Joint Resolution constitutes a mutual agreement between the Boards to authorize the transfer of students residing within the School Choice Area, all such transfers shall be made pursuant to the requirements of Texas Education Code Sections 25.032 through 25.034 and in compliance with LEISD and DISD Board Policies FDA (Legal) and FDA (Local).

BE IT FURTHER RESOLVED, the Boards agree to transfer the school funds and other payments proportionate to the transfer of attendance to the receiving district upon the transfer of a student residing within the School Choice Area in accordance with Texas Education Code, Section 25.035.

BE IT FURTHER RESOLVED, in the event that the residents of the School Choice Area seek annexation into the school district boundaries of either LEISD or DISD, approval of the receiving district will be required prior to annexation of the School Choice Area into that district.

PASSED AND APPROVED on this _____ day of May, 2016.

**LITTLE ELM INDEPENDENT SCHOOL DISTRICT
BOARD OF TRUSTEES**

By: _____
LeAnna Harding
President of the Board

ATTEST:

By: _____
DeLeon English
Board Secretary

**DENTON INDEPENDENT SCHOOL DISTRICT
BOARD OF TRUSTEES**

By: _____
Barbara Burns
President of the Board

ATTEST:

By: _____
Dorothy Martinez
Board Secretary

EXHIBIT A
School Choice Area
Metes and Bounds

Exhibit B
School Choice Area
Map