



2023-2024

# BMHS COURSE GUIDE

FOR EDUCATIONAL PLANNING



Battle Mountain High School  
Eagle County School District  
151 Miller Ranch Road  
Edwards, CO 81632  
Phone: (970) 328-2930

Fax: (970) 328-2935

Website:

<https://bmhs.eagleschools.net/>

School Code: 061-010

**Jason Mills**- Principal

**Maxine Cordova**\*- Assistant Principal/Dean of Students

**Gentry Nixon**- Assistant Principal/Athletic Director

**Robert Parish**- Assistant Principal



## Counseling Staff

**Josh Wright**- Last names A-E

**Kristan Carey**- Last names F-Lon

**Erika Ghent Gilbert**- Last names Lop-Q

**Allison Bender**- Last names R-Z

**Rosangela Ruiz**\*- Registrar

**Alondra Simmons Hernandez**\*- Counseling  
Secretary

## Front Office Staff

**Liz Esquibel**- Office Manager

**Gilbert Morales**\* - Campus Supervisor

**Carolina Serrano Gomez**\*- Attendance Secretary

\*Hablo Español

## Table of Contents

<a href="#">Daily Schedule</a>
<a href="#">Registration Information</a>
<a href="#">Graduation Requirements</a>
<a href="#">Seal of Biliteracy</a>
<a href="#">Early Graduation</a>
<a href="#">AVID</a>
<a href="#">Athletics and Activity Eligibility</a>
<a href="#">BMHS PE Credit Policy</a>
<a href="#">Transfer Credit</a>
<a href="#">Alternate Credit</a>
<a href="#">Grades and Schedules</a>
<a href="#">College Entrance Requirements</a>
<a href="#">Higher Education Requirements - Colorado</a>
<a href="#">Xello</a>
<a href="#">Accelerated Freshman Course Work</a>
<a href="#">BMHS Accelerated Pathways</a>
<a href="#">College Credit Opportunities at BMHS</a>
<a href="#">Career Options CMC/BMHS</a>
<a href="#">Advanced Placement (AP) Program</a>
<a href="#">BMHS Counseling Department</a>
<a href="#">MTSS</a>
<a href="#">BMHS Media Center</a>
<a href="#">Homework Club</a>
<a href="#">Colorado Career Cluster Model</a>
<a href="#">Advisory</a>
<a href="#">Art</a>
<a href="#">Business Education</a>
<a href="#">Consumer &amp; Family Studies</a>

<a href="#">English</a>
<a href="#">English Language Acquisition</a>
<a href="#">English Support Electives</a>
<a href="#">Industry &amp; Technology Education</a>
<a href="#">International Languages</a>
<a href="#">Mathematics</a>
<a href="#">Music</a>
<a href="#">Physical Education</a>
<a href="#">Science</a>
<a href="#">Social Studies</a>
<a href="#">Exceptional Student Services (ESS)</a>
<a href="#">Additional Electives</a>
<a href="#">Additional CMC Offerings</a>

# Battle Mountain High School

## Foreword

Welcome to the home of the Huskies. At Battle Mountain High School, our goal is to properly educate all of our students so they will be able to move forward and achieve their dreams and goals. This educational planning guide provides information about the content of academic courses, scheduling, course load and planning for college and other post-secondary options. We encourage each student to review and discuss these course offerings with parents/guardians. It is very important for each student to study the different course offerings carefully and make selections according to interest and future plans. Enrolling in a challenging course of study now will enhance your opportunities for success in the future. With students, staff and parents working together, we will be better prepared for whatever lies ahead. We continually commit to developing our school culture based upon acceptance, tolerance, unification and working together in order to create the best learning environment at BMHS.

This booklet was prepared to assist parents and students with the enrollment process. This Educational Planning Guide describes all the comprehensive course offerings at Battle Mountain High School for the school year. A description of each subject has been written to explain the basic content of each course.

The courses listed in this handbook are tentative; courses can only be offered if there is sufficient student enrollment. Course offerings and the number of times a course is offered each school year are determined by the number of students that register for that class. The Planning Guide also includes Dual/Concurrent Enrollment (DE/CE) courses both on the BMHS campus and the Colorado

Mountain College campus.

The teachers, counselors and administrative staff at Battle Mountain High School are prepared to assist students in selecting a schedule geared to meet each student's individual needs and interests. Before class selections are made for next year, we recommend that both students and parents carefully read the information contained in this book. Special attention should be given to the requirements for graduation. It is our goal to meet the educational needs of all students and to provide them with a rigorous and comprehensive academic program. If we can assist you in any way with the process, please contact your student's counselor or the building principal.

## **The Battle Mountain High School Mission:**

Educate all students for success and to become lifelong learners.

Husky **PRIDE** are the values our students learn to exemplify:  
**Perseverance-Respect-Integrity-Diversity-Excellence**



### **BMHS Beliefs:**

1. We behave with integrity; we role model respect for diversity, respect for rules, and respect for one another as we work collaboratively and inclusively in a stimulating learning environment.
2. We value, care for, and respect each person's worth.
3. This is a great place to work because it is a school of choice due to a positively challenging atmosphere with common goals, respect, and camaraderie and with a strong leadership that cares.
4. We provide a safe, challenging learning environment with well-balanced programs and activities.
5. We accomplish goals that result in excellence for a diverse population through respect, high standards, and commitment for all.
6. We are a diverse school producing well-rounded and successful students and graduates who are connected to the community; goal oriented and who find satisfaction in life.

### **BMHS School Goals:**

- Reduce the Achievement Gap (SAT, AP, STAR reading and math)
- Increase Achievement for all students (as demonstrated through SAT and AP scores)
- Increase engagement and participation of all students. Increase positive self-worth, every student will have a trusted adult, increase hope and grit from the Gallup Survey. Increase mental health and wellness of all students.
- "Just right education for every student" - Diverse programming and differentiation for students in all classes to include RTI, SIOP, ESL strategies, etc.

# DAILY SCHEDULE

BMHS Operates on a semester schedule with two, 18-week semesters of seven, 52-to-95 minute classes, each earning 0.5 credits.

Monday			Tuesday			Wednesday			Thursday			Friday		
Period	Start	End	Period	Start	End	Period	Start	End	Period	Start	End	Period	Start	End
Zero	7:40	8:35	Zero	7:40	8:35				Zero	7:40	8:35	Zero	7:40	8:35
1	8:40	9:32	1	8:40	9:32	Professional Development	8:00	9:15	4	8:40	10:05	1	8:40	9:32
2	9:37	10:29	2	9:37	10:29	Flex Time	9:20	10:10	Advisory	10:10	10:45	2	9:37	10:29
3	10:34	11:26	3	10:34	11:26	1	10:10	11:35	5A Lunch	10:45	11:15	3	10:34	11:26
4A Lunch	11:26	11:56	4A Lunch	11:26	11:56	2A Lunch	11:35	12:05	5A Class	11:20	12:45	4A Lunch	11:26	11:56
4 A Class	12:01	12:53	4 A Class	12:01	12:53	2A Class	12:10	1:35	5B Class	10:50	12:15	4 A Class	12:01	12:53
4B Class	11:31	12:23	4B Class	11:31	12:23	2B Class	11:40	1:05	5B Lunch	12:15	12:45	4B Class	11:31	12:23
4B Lunch	12:23	12:53	4B Lunch	12:23	12:53	2B Lunch	1:05	1:35	6	12:50	2:15	4B Lunch	12:23	12:53
5	12:58	1:50	5	12:58	1:50	Advisory	1:40	2:15	7	2:20	3:45	5	12:58	1:50
6	1:55	2:47	6	1:55	2:47	3	2:20	3:45				6	1:55	2:47
7	2:52	3:45	7	2:52	3:45							7	2:52	3:45

\*0 period has limited course options available. No transportation provided.

# REGISTRATION INFORMATION

## BMHS Class Selection and Course Change Policy

*Course Selection/Registration takes place in the spring before the upcoming school year. Courses that are listed may not be offered depending on the interest generated from students or staffing changes. Students may be referred and placed in specialized classes (basic or advanced) based on standardized test scores (STAR or SAT), grades and teacher recommendations. Therefore, it is very important that students are informed and decisive when they make their course selections due to the fact the BMHS schedule is built from their requests. Proper course selection is based on knowledge of graduation requirements, post-secondary planning, and required prerequisites. Except with special permission, courses indicated as one credit (1.0) are to be taken for the 2 semesters and not dropped after the first semester.*

### Guidelines and Requirements for Choosing Courses

- Freshman and Sophomore students are required to take seven (7) classes each semester.
- Junior students are required to take a minimum of six (6) and up to seven (7) classes each semester.
- Senior students must take a minimum of six (6) and up to seven (7) classes first semester and a minimum of five (5) classes 2nd semester.
- While not guaranteed, any off hours (Juniors and Seniors only) most likely will be 7th hour.
- When selecting courses each year, remember that course selection is a collaborative process that involves students, parents, counselors, and teachers.
- The current classroom teacher is the best person to advise students on the proper course level for the following year in that subject.
- Students will have the opportunity to attend the class fair, talk to teachers and meet with their counselor to discuss their best course path based on their post high school goals. Students should consider their career and college goals and refer to the Graduation Requirements and the Course Handbook for more information on courses to make sure they're on track to graduate!
- Students will enter course requests into Powerschool by March 10th, 2023 which will then be verified by or with their counselor and reviewed by parents/guardians.

### **Course Changes/Class Selection or Period Changes**

During the selection process, parents/guardians are encouraged to communicate with their student and their counselor about the selected courses. Once a schedule is in place, the student will need to be approved to make changes.

**PLEASE UNDERSTAND THAT COURSE CHANGES CANNOT BE GRANTED FOR REASONS SUCH AS TEACHER PREFERENCE, LUNCH PREFERENCE, FRIENDS' SCHEDULES, OR CONVENIENCE.**

The following changes must be made within the first three (3) days of the semester

- Senior needing a class for graduation requirements
- Student has been placed in wrong level of class
- Student fails to meet prerequisite of the class
- Student has been scheduled into two classes during the same period
- Student has less than the 6 class minimum

As a reminder, student course requests drive the master schedule therefore any schedule changes are difficult.

### **Class Changes**

If you would like to request a change to your schedule for reasons other than those listed above, you **MUST**:

1. Attend classes - If you are marked ABSENT, we cannot change your class
2. Fill out the Class Change Request Form with what class you would like to DROP and ADD
3. In the space provided, explain why you want to make the change
4. Get all signatures - the exiting teacher, the teacher of the new class, parent/guardian, and an administrator
5. Attend the Class Change "Expo" at the start of the semester. Class changes will only be considered with all the required signatures. Class changes are not guaranteed. THIS IS THE ONLY TIME YOU CAN TRY TO CHANGE YOUR SCHEDULE FOR REASONS OTHER THAN THOSE LISTED ABOVE.

### **AP Course Changes**

If enrolled in an AP class, you will be charged an AP exam fee of \$97. Students are required to take the AP exam in May for any AP course they are enrolled in.

If you drop the AP class you will be required to pay a cancellation fee of \$40.



# GRADUATION REQUIREMENTS

To receive a diploma from Battle Mountain High School, students must earn a minimum of 24 credits for the school year of graduation. The credit requirements are as follows:

Subject	Minimum ECSD Credit Requirement
English	4
Mathematics	3
Science	3
Social Studies	2.5
Economics	.5
Government	.5
Physical Education	1.5
Health	.5
Practical Skills	1
Electives	<i>will vary</i>
<b>Total</b>	<b>24.0 credits + demonstrate competency from menu of options</b>

Subject	Suggested College Prep Credit Requirement
English	4
Mathematics	4
Science	4
Social Studies	2.5
Economics	.5
Government	.5
International Language	2
Physical Education	1.5
Health	0.5
Practical Skills	1
Electives	<i>will vary</i>
<b>Total</b>	<b>24.0 credits + demonstrate competency from menu of options</b>

In addition to required coursework, all students (Class of 2021 and beyond) must demonstrate competency in Math and English through one area below.

Menu of Options	English	Math
ACT	18	19
SAT	470	500
ASVAB	31	31
Accuplacer	241 Reading 236 Writing	255 Arithmetic 230 QAS

Advanced Placement (AP) College Course	2+	2+
Verified District Capstone	District Approved	District Approved

## SEAL OF BILITERACY

The Seal of Biliteracy is an award on a diploma at graduation from high school for those that demonstrate academic proficiency in English and at least one other language. Talk to your counselor or foreign language teacher for more details.

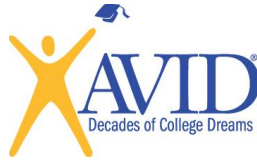
## EARLY GRADUATION

Seniors who have completed all graduation requirements prior to December of their senior year and wish to graduate early, must complete the following:

1. A written request and accompanying letter to the principal stating the reasons for wanting to graduate early signed by the student and their parent/guardian. This form must be presented to the principal by October 1<sup>st</sup> of their senior year.
2. Upon receipt of the written request, the principal will review the student's academic standing with a counselor and respond accordingly.

If approved, diplomas will be awarded during commencement ceremonies the following spring. Only those students who have earned their required number of credits may participate in the graduation exercise. All outside credits need to be submitted and approved at least 10 school days prior to the graduation ceremony.

# AVID



**AVID MISSION STATEMENT:** AVID's mission is to close the opportunity gap by preparing all students for college and career readiness and success in a global society. The goal of AVID is to ensure that ALL students, especially those underserved and in the academic middle, will:

- succeed in rigorous curriculum
- complete a rigorous college preparatory path
- enter mainstream activities within the school and community
- increase their enrollment in four-year colleges
- become educated and responsible leaders in a democratic society

**WHAT IS AVID:** Established in 1980, AVID has become one of the most successful college and career preparatory programs ever for low-income and underserved students. Today it reaches more than 2 million students annually in nearly 8,000 K-12 U.S. schools in 49 states and in schools in the Department of Defense Education Activity, Canada, and Australia. This is accomplished through...

- A structured, college and career preparatory system working directly with schools and districts.
- A direct support structure for first-generation college goers, grades 4-12.
- A school-wide approach to curriculum and rigor.
- A professional development program providing training throughout the U.S. with 85,000+ educators trained annually

**WHY AVID WORKS:** There are some basic principles that define what become the supports of AVID.

- Places AVID students in rigorous curriculum and gives them the support to achieve
- Provides the explicit "hidden curriculum" of schools
- Provides a team of students for positive peer identification
- Redefines teacher's role as that of student advocate

**AVID STUDENT PROFILE:** When looking at applicants these are some potential indicators of candidates.

- Average to High Test Scores
- 2.0-3.5 GPA
- College Potential with Support
- Desire and Determination
- First to Attend College
- Historically Underserved in 4-year Colleges
- Low Income
- Special Circumstances

**AVID PROGRAM ESSENTIALS:** The following applies for all students who are a part of the program:

- Voluntary Participation – students apply and are hand-selected to be in AVID
- AVID Elective class – for best results, students should take the AVID Elective class (1.0 yearlong course) for all 4 years of high school
- Rigorous courses – students enroll in one or more advanced academic class (AP/DE/honors classes) each semester
- WICOR – writing, inquiry, collaboration, organization, and reading
- Trained tutors – tutoring occurs during the Elective class within Tutorials
- Citizenship – maintain satisfactory citizenship and attendance in all classes
- GPA & Attendance – maintain satisfactory GPA and attendance according to the policies reviewed in class

## AVID SELECTION PROCESS

Capacity: BMHS has the capacity to have about 40 students in each grade level of AVID. Because of this, a selection process will determine which students can join. Interested students should [apply today](#) to be a part of the BMHS AVID family!

# ATHLETICS & ACTIVITY ELIGIBILITY

Colorado High School Athletic Association (CHSAA) guidelines are as follows:

- The student must be enrolled in minimum 6 classes each semester before and during participation, with no failing grades.
- The student may not fail more than two classes per semester, given seven or more classes, in order to participate. Eligibility is based on the grades of the previous semester of attendance until the date CHSAA has determined when eligibility can be regained with successful schoolwork.
- The student may not participate in the upcoming year if they reach the age of 19 prior to August 1. Students may not participate more than four years.
- Any student who has attended more than 4 years of high school is ineligible for high school athletics.

Student athletes interested in playing NCAA  college sports in college need to contact their counselor for eligibility information or visit <https://web3.ncaa.org/ecwr3/>

## BMHS PE CREDIT POLICY

PE credit policies – updated 2023.

Students may earn PE credit through BMHS PE classes and BMHS CHSAA sports. BMHS PE has a broad variety of PE offerings to address a diverse range of students. Specifically, our courses of Outdoor Rec 1 and 2, Lifetime Fitness, and Intro to Strength and Conditioning/Strength and Conditioning for females give students alternatives to the traditional PE 1 and PE 2 courses.

If a student desires the opportunity to earn sports credit outside of current Battle Mountain course offerings, they may do so through an activity pre-approved by administration which satisfies the outlined criteria below.

**To earning an alternative .25 sports credit throughout a semester, please submit the following to the principal:**

- Submit the Battle Mountain High School [Online /Off-Site Learning Contract](#) and attach the following:
  - Proposed activity and its sanctioning body or oversight group
  - A one page essay explaining the health benefits of the activity
  - Your practice and competition schedule
  - Your supervising coach or sponsors name and contact information
  - In the last week of the semester, submit a log of a minimum of 35 hours of practice or competition hour signed by your coach or sponsor to the principal

### Stipulations

- 1.5 PE credits are required to graduate from BMHS. By participating in this alternative opportunity you are limiting the opportunity to earn credits within the normal system and may make attaining 1.5 credits more difficult.
- One must focus on a specific activity.
- Students can earn a maximum of 1.0 sports credits in this manner (total four semesters).
- Students can earn a maximum of .25 per semester.

- Credit will not be given for activities that are offered at BMHS.
- Students will still be expected to take a minimum of one semester of P.E. at BMHS, as the graduation requirement remains 1.5 P.E. credits. (more if they do not earn a full 1.0 credit in this way).
- If a student fails a core course, or falls behind graduation pace, then they will no longer be eligible for this option.
- Administration withholds the right to terminate this option for any student found to be in violation of regular attendance or discipline policy at any time.
- Will be labeled on transcript as "Alternative PE Credit."

## TRANSFER CREDITS

- Students who transfer to Battle Mountain High School from outside the district will have their transcript evaluated by the Registrar's Office. Although Battle Mountain High School will accept all credits coming from another district, up to **8.0** per year, the specific category in which these credits are applied is up to the discretion of the Registrar. Honors credits are not transferred as weighted grades since BMHS does not weigh BMHS honor classes.
- ECSD students are eligible to take CMC classes approved through the ECSD/CMC contract, at ECSD expense and be transferred as BMHS credit per admin/counselor approval. Classes can be taken on or off campus and will be counted towards full equivalency. With approval, the courses will be transferred for high school credit in the subject area and will either be weighted or non-weighted dependent on the circumstance.
- Transfer grades coming from an accredited academic institution will receive point values towards a GPA that correspond to that particular letter grade. Transfer grades coming from non-academic programs will receive credit on a pass/fail basis.
- Students who wish to take coursework for credit outside of the Eagle County Schools must first gain approval from a school counselor, registrar and administrator.
- In order to graduate from Battle Mountain High School, residence/enrollment is required in the last term prior to graduation, unless approved by the principal.

## ALTERNATE CREDIT

### SUMMER SCHOOL

Students who need to recover credit not earned in the regular school year may attend BMHS Summer School if available. Grades earned during summer school do not replace previous grades earned during the school year nor affect GPA. For more information, see your counselor.

#### Please note our summer school attendance policy:

If a student has 10 absences (A, U, WO) during a semester long class, they will not be eligible to take Summer School to regain the credit for that class. For every five tardies in a class, the student will receive one absence.

### CREDIT EARNED OUTSIDE THE BMHS SCHOOL SETTING

Credit for courses not offered through BMHS, including high school correspondence courses, classes at

Colorado Mountain College, online courses or summer programs need to be approved by your counselor and administration. A learning contract for any outside credit must be signed by the student, parent, counselor and administrator. BYU online or other online classes may NOT count as a seated class. Student must have the required minimum classes in their schedule. BYU final exams must be proctored by a certified proctor. BYU grants a letter grade and not a Pass/Fail, therefore you will be awarded a letter grade on your transcript and the grade will be calculated into your cumulative GPA.

## GRADES AND SCHEDULE

### POWERSCHOOL

PowerSchool (<http://ps.eagleschools.net/public/>) is an information system that allows parents and students to access teachers, grades, and attendance online 24 hours a day. Please contact the counseling office at 970-569-5380 if you need your personal login.

### GRADE POINT AVERAGE (GPA) AND CLASS RANK

All classes assign a grade of A, B, C, D, or F and are figured into the grade point average at semester. A “Pass” grade is not included in the GPA even though credit is earned. Class rank is determined by cumulative GPA. Higher-level courses can receive more points for letter grades earned. This is known as “grade weighting”. Weighted classes include all Advanced Placement (AP) classes and Dual/Concurrent Enrollment (DE) classes (only if taken at BMHS). Honors Designation classes are not weighted. AP students must earn a 2 or better on the AP exam to earn the weighted grade.

### GRADING SCALE

Letter Numerical Regular Weighted

Grade Equivalent Courses Courses

A 90-100% 4.0 5.0

B 80-89% 3.0 4.0

C 70-79% 2.0 3.0

D 60-69% 1.0 1.0

F below 60% 0 0

P above 60%

NC No credit\* (*Not used in calculating the GPA*)

### SCHEDULE CHANGES AND WITHDRAWAL FROM CLASSES

[See Registration Information for schedule change policy.](#)

After the 3-days allotted to schedule changes, any changes need to be teacher initiated, otherwise a W/F (withdraw/fail) will be placed on the permanent transcript. (Exceptions within the one month are made only if the teacher/counselor/administrator initiates schedule changes.) Note – After one month, any dropped classes earn a W/F and current grade travels to the replaced class.

• **Any withdrawals from a DE course may be charged per credit at the CMC rate**

Modification of the student’s schedule needs to be done with the appropriate school counselor.

### STUDENT PROGRESS

Report cards can be viewed online at the end of every semester to give students and parents an indication of progress in each course. Official grades are entered on the transcript at the end of each semester. Parents can access grades 24 hours a day through the Power School program. Call the Counseling Department at 970-569-5380 with questions. Teachers can be contacted at school for more information on individual student

progress.

## COLLEGE ENTRANCE REQUIREMENTS

We encourage students and parents to access the resources of the BMHS College & Career Center as well as the BMHS website. Colleges report the most significant factor in the college admission decision is grades earned in college preparatory classes in high school. Be aware that the student's transcript sent to colleges reflects his/her work, GPA, and class rank through the end of his/her junior year, or the first semester of the senior year. Coursework for the senior year is also part of the application process. Standardized testing requirements vary and depend on the individual colleges.

As juniors, the students should schedule their standardized tests during the spring of their junior year or fall of their senior year. In April, the State of Colorado requires all 11 grade students to take the SAT. These test results can be used to apply to colleges around the country. Students may take the tests more than once, however, more than three times is not recommended. Colleges also review class rank, essays and recommendations from teachers and counselor.

[Click here for the recommended 11<sup>th</sup> grade college prep checklist.](#)

[Click here for the recommended 12<sup>th</sup> grade college prep checklist.](#)

## COLLEGE ADMISSIONS IN COLORADO

Visit the [Colorado Department of Higher Education Website](#) for more information.

Colorado public four-year colleges and universities consider a mix of factors in making freshman admission decisions:

- High School GPA
- Test Scores—either SAT and/or ACT (if taking the SAT, visit the [Khan Academy](#) to prep for the exam)
- Academic course mix and rigor (see below for more information)
- Extracurricular activities and other considerations (includes internships, work, sports, leadership, etc.)

### High School GPA and Test Scores

#### [Chart for GPA and Test Score Ranges of Admitted Freshman](#)

This chart provides the average GPA and ACT/SAT ranges for students Colorado colleges and universities have admitted. For example, “50 percent of admitted students had between a 3.0 -3.5 GPA and 1040 – 1300 SAT.”

The [online admission standards tool](#) provides this 50 percent mid-range.

These ranges are NOT admission requirements but a guide to the admission standards at each institution.

Students who have below the listed 50 percent ranges can still be competitive for admission if they are strong in other areas of their academic profile.

### Academic course mix, rigor and grades

Four-year colleges in Colorado know that academic preparation, especially in English and math, will make you more likely to be successful in college. The Higher Education Admission Recommendations ([HEAR](#)) detail the number of high school courses in each subject area it is recommended you complete to be a competitive candidate for admission—see the chart below.

If you have challenged yourself by successfully completing Honors, AP, IB or college-level courses in high school, this will strengthen your application even more!

Academic Area Recommended Number of Units	
English	4 Units
*Mathematics	4 Units
Natural Science	3 Units
Social Science	3 Units
World Language	1 Unit
Academic Electives	2 Unit
TOTAL	17 units

*A unit = one year of a high school course. If you are taking a college level course while in high school, one semester = one unit.*

\*Currently, the HEAR math recommendation is that students should complete up through Algebra 2. However, some college programs require freshman students to be ready for calculus. If you know which program or area of study you wish to pursue in college, contact the admission or academic advising office at the institution you are considering for specific information.

## COLLEGE VISITS

Junior year is a great time for college visits. BMHS allows **3 school days** per school year for college visits. Students need to complete the pre-approval forms, and upon their return, have two days to submit proof of visit for absences to be excused. Please utilize holidays and breaks for these visits so as not to interrupt your student's learning.

## XELLO



Beginning in middle school and continuing through high school, students develop their own ICAP -Individual Career and Academic Plan to explore career options, opportunities, and make a plan that meets their goals. Xello is our district's online college and career readiness platform that assists students in developing their ICAP.

WITH XELLO, YOU CAN:



- Build Self-knowledge
  - Define interest, skills, preferences and aspirations so each student can explore the right opportunities.
- Explore Options
  - Learn about career possibilities and educational pathways by exploring rich, engaging content and lessons.
- Create a Plan
  - Create dynamic actionable plans that outline the steps needed to achieve school, career and life goals.
- Learn and Reassess
  - Interactive lessons help students develop age appropriate skills and knowledge for success in school and beyond.

## ACCELERATED FRESHMAN COURSEWORK

Eighth grade students matriculating to the high school may be accelerated in their coursework with successful completion of work in middle school. Qualified students may:

- Place into a higher math course based performance in math in 8<sup>th</sup> grade
- Take Spanish 2 or higher as a 9<sup>th</sup> grader depending on proficiency level determined by placement exam
- Take English I with Honors designation
- AP Human Geography

## BMHS ACCELERATED PATHWAYS

There are different paths for students to experience accelerated coursework at BMHS. The chart below highlights some of the ways that students can begin, continue, and complete courses that push towards our most advanced courses. ***It is important to remember that it is not the expectation that students are accelerated in each content area; rather, students should seek opportunities where their talents, interests, and future career plans lead them to try these courses.*** The accelerated paths highlighted below are for our core content areas of English, Math, Science, and Social Studies.

	English	Math	Science	Social Studies
9	English I, Embedded Honors Contract	*Geometry	*Biology	AP Human Geography
10	AP English Language	Algebra II	Chemistry, Advanced	DE/AP World History
11	**DE English Literature I & II	**AP Pre-Calculus or Pre-Calc /Trig	DE/AP Chemistry** or AP Physics 1 or **DE/AP Biology (BIO 111/112)	AP US History

12	**DE English Composition I & II	AP Calculus AB	AP Environmental Science	AP Government
		AP Calculus BC AP Statistics	AP Physics 2 **DE Botany (BIO 201)	

\*Requires BMHS Placement Testing

\*\* Requires Accuplacer Placement

## COLLEGE CREDIT OPPORTUNITIES AT BMHS

*Students at BMHS can earn college credit while working toward high school graduation. Students benefit not only by saving college tuition and time but will find upper level courses challenging and good preparation for college work. These opportunities include:*

### DUAL/CONCURRENT ENROLLMENT COURSES

The Colorado legislature allows juniors and seniors to attend approved post-secondary educational institutions to earn high school and/or college credit. Eagle County School District (ECSD) has entered into an agreement with Colorado Mountain College (CMC) to provide the opportunity for students to earn high school and college credit simultaneously.

- CMC offers many dates and times to take the Accuplacer online via Zoom which allows for a student's placement in a DE class (provided they pass with an eligible score). Those dates are in the spring PRIOR to registration for the next school year. If a student takes the Accuplacer test past those determined dates, then their placement in the class is not guaranteed.
- Students may also take the ACT or the SAT and submit qualifying scores to the Counseling office. Dual/Concurrent Enrollment coursework is eligible for credit if the courses are required to graduate from high school and the student has completed a CMC "Intent to Enroll Form".
- Due to agreements between Colorado Mountain College and Colorado's public four-year institutions, Dual/Concurrent Enrollment coursework earned at BMHS is guaranteed to be accepted by Colorado's four-year institutions. Private colleges accept credits at their own discretion. Graduating seniors will need to request a CMC transcript be sent to the college they plan to attend. Ambitious BMHS students can earn an Associate Degree along with a high school diploma by taking a combination of Dual Concurrent Enrollment classes at BMHS and coursework at CMC. See your School Counselor for more information.
- Students who receive a D or F in a DE class are required to pay the cost of the class back to the district office.
- CMC and BMHS have different drop dates. Students will follow BMHS drop date which is within the first 4 days after a semester begins. A student who drops a DE class after the BMHS drop date will receive a WF unless there are extenuating circumstances.

### BMHS Dual/Concurrent Enrollment Academic class offerings

BMHS Course	CMC Course Code	Cr.	Prerequisites
College Biology I & II	BIO 111 Gen College Biology I	5	Accuplacer reading/writing score 246+
	BIO 112 Gen College Biology II	5	

Botany	BIO 211 Botany	5	BIO 111
College Chemistry	CHE 111	5	Completion of high school chemistry, Algebra II (pre or corequisite), Accuplacer Reading 246+ and Math Accuplacer AAF 245+
Psychology	PSY101 General Psychology I PSY102 General Psychology II PSY 231 Positive Psychology PSY 235 Human Growth & Dev	3 3 3 3	Psychology classes will rotate two sections per year.  Next Generation Accuplacer Writing scores 246-300; or equivalent ACT score 18 or SAT score 470
English Literature I & II	Lit 1015 Introduction to Literature/ Lit 2022 British Literature since 1770	3 3	Next Generation Accuplacer Writing scores 246-300; or equivalent ACT score 18 or SAT score 470
English Composition I & II	ENG 121 English COMP I ENG 122 English Comp II	3 3	Next Generation Accuplacer Writing scores 246-300; or equivalent ACT score 18 or SAT score 470

Accuplacer is a computerized academic placement test developed by the Educational Testing Service, the same company that has the SAT and AP exams. This is an untimed, multiple-choice test that is administered by a proctor. Test results are available immediately. Students are allowed to take the Accuplacer twice per CMC semester.

Students must meet prerequisites to participate in the Dual/ Concurrent Enrollment program. The school district will pay the college tuition, but students earning a D+ or lower will be responsible for paying the school district back.

Students must purchase books for these classes. The school does not provide books for Dual/Concurrent Enrollment classes. Students will also need to pay for their own transportation if needed.

Colorado Mountain College, Vail Valley Campus contact person: Emily Delles, 970-569-2905 or [edelles@coloradomtn.edu](mailto:edelles@coloradomtn.edu)

## CAREER OPTIONS CMC/BMHS

### Dual/Concurrent Enrollment Career & Technical Courses

#### ECSD in cooperation with Colorado Mountain College

The following Dual/Concurrent Enrollment course offerings provide students with options to explore a wide variety of career options while in high school. The courses provide an introduction to an area of study which, if pursued, would count towards a complete course of study through Colorado Mountain College, and ultimately result in an Associate Degree or industry certification. Some specifics related to Career & Technical

Dual/Concurrent Enrollment courses include:

- Career & Technical Dual/Concurrent Enrollment courses are offered off campus in the late afternoon or evening at Eagle County CMC locations
- Students taking Career & Technical Dual/Concurrent Enrollment courses may be in classes with adult learners

Students are responsible for tuition if they do not earn a “C-” or better on the college course or drop the course after the drop/add period. CMC career technical courses are offered on the Edwards CMC campus on a semester system, Fall and Spring. Students interested in attending any of these classes need to contact their school counselor prior to the beginning of the CMC semester. Specific information about courses, programs and offerings can be found in the CMC Catalog on campus or at [www.coloradomtn.edu](http://www.coloradomtn.edu).

**BMHS/CMC Dual/Concurrent Enrollment Career Tech offerings may include:**

- Culinary Arts
- Early Childhood Education
- Emergency Technical Training
- Fire Science
- Nursing Assistant
- Medical Assistant
- Spanish Interpretation
- Construction Trades
- Education in Spanish

If you are interested in these offerings, see your BMHS counselor for more details.

## ADVANCED PLACEMENT (AP) PROGRAM

The College Board has developed a national program of college-level courses and exams for high school students. BMHS offers following **20** Advanced Placement exams: **English Language and Composition, Pre-Calculus, Calculus AB/BC, Statistics, Computer Science Principles, Human Geography, US History, Modern World History, US Government and Politics, Biology, Environmental Science, Physics 1 & 2, Chemistry, Art History, and Portfolio Art (Drawing, 2D, 3D)**. (See the specific course descriptions in the department sections of this guide.) The AP exams are required and the students are responsible for the cost of the exams, which is approximately **\$94**. Vouchers are available for students with financial need. The exams are given on national test dates in May. Students who take these exams are typically very well prepared for college coursework and can earn college credit by performing at a high level on these exams. Exams are scored 1-5 with 5 being the highest level. Each college establishes a level that it will accept for college credit which can be viewed by visiting individual college websites. *Students who score a ‘1’ will receive an unweighted grade.*

## BMHS COUNSELING DEPARTMENT

The BMHS Counseling Department consists of four full-time counselors, a registrar and an office secretary. The Counseling Department collaborates with teachers, parents, students and community members to deliver a program that will help all students succeed in school as they transition into their post-secondary plans. Counselors provide guidance and social/emotional counseling either directly or woven into classroom time. Counselors provide individual student planning throughout the year and will meet with each student individually to plan their

coursework for the next year as part of developing post-secondary plans. Counselors respond to students' needs with direct intervention, crisis intervention, consultation, collaboration and referrals. We have an open door policy and make every attempt to respond to all of our students in a timely fashion. Visit our website <https://bmhs.eagleschools.net/academics/give-clone> for updates.

## MULTI-TIER SYSTEM OF SUPPORT (MTSS)

The purpose of the Multi-Tier System of Support (MTSS) program is to identify and support students who are struggling academically, athletically, and personally due to barriers that they are facing. These barriers include, but are not limited to students experiencing problems in the classroom, at home, with peers, mental health issues and/or substances. The objective is to structure a system of support through a core team model called the MTSS Team that will assess a referral and provide the necessary accommodations to the student who is experiencing difficulties. MTSS is a process, not a treatment facility or a curriculum. It is designed to connect programs and services within and across the school as well as community systems. The program may consist of ongoing counseling, but mainly an initial assessment and a referral for continuing service if needed.

## BMHS MEDIA CENTER

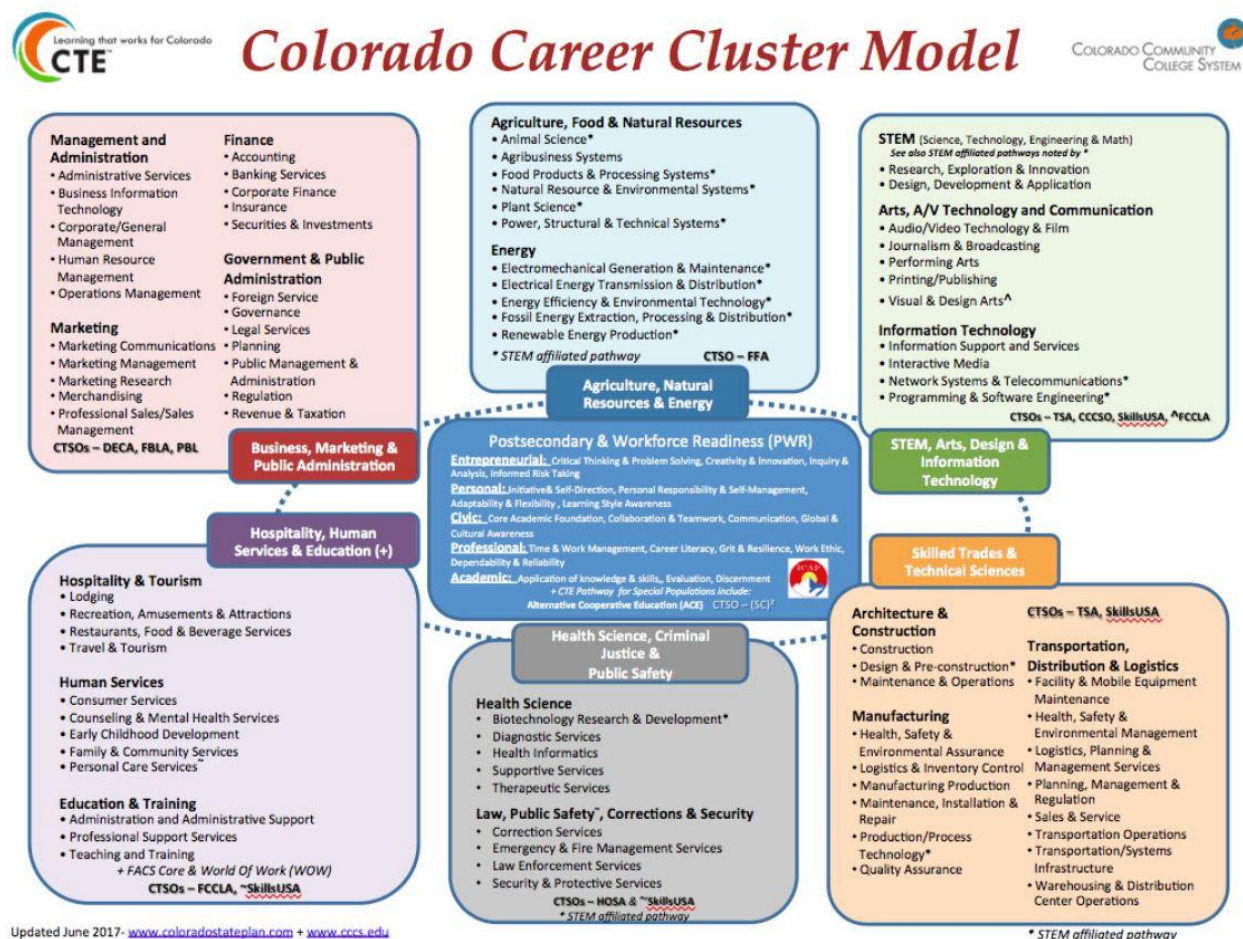
The Battle Mountain High School Media Center is the instructional resource center for students and staff. The school curriculum is supported via the traditional print materials and current technology. Students are required to utilize the media center resources in order to complete specific subject area assignments. It is through these visits that the information skills curriculum is delivered to students so they learn to integrate them in their work. A full time professional media specialist staffs the media center. The Media Center is open daily, before and after school. Scheduling is flexible so students may visit the media center throughout the day.

## HOMEWORK CLUB

Battle Mountain High School is committed to the success of its students. It is because of that commitment that we offer Homework Club in our Media Center after school Monday-Thursday from 3:30 PM to 4:30 PM. During this time a staff member is available to help assist in whatever way we can.

# Colorado Career Cluster Model

The following course offerings are listed alphabetically by department and are colored to correspond with the Colorado Career Cluster Model.



## COURSE OFFERINGS BY DEPARTMENT

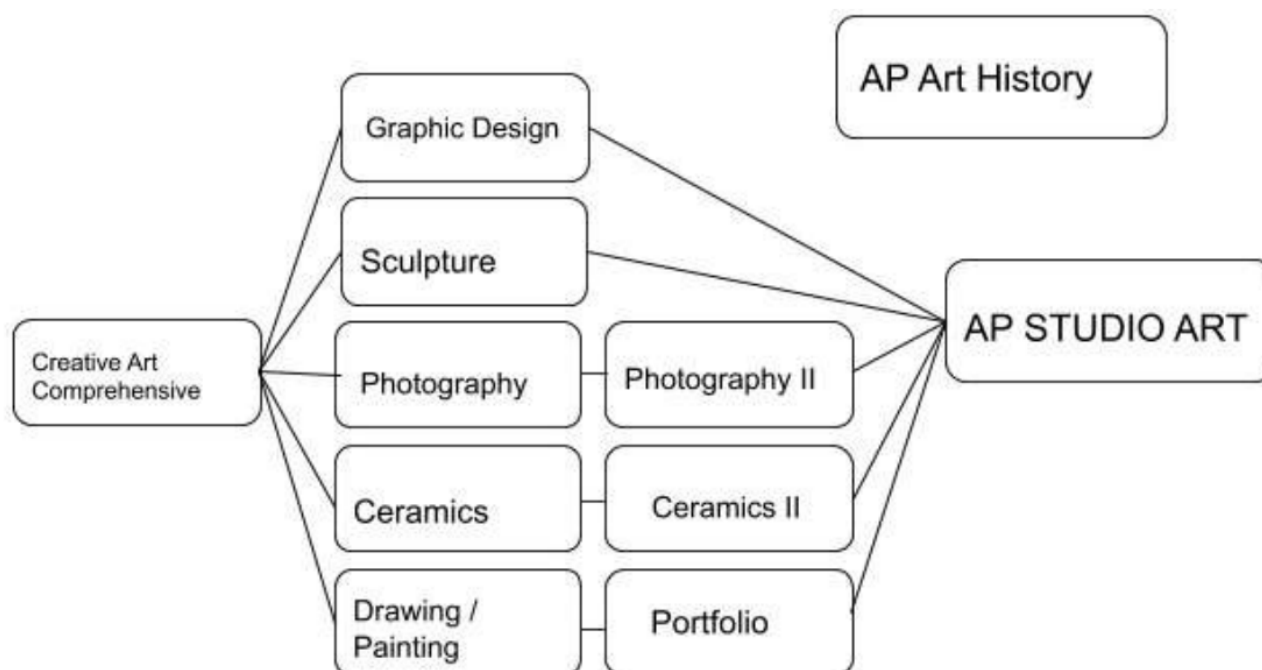
### ADVISORY

Advisory	
Recommended Grade	9, 10, 11, 12
Credit	.25 per semester
Prerequisite	None
Class Fee	None

Advisory courses may vary based on grade level, however this course will offer a small peer group the opportunity to explore areas of interest and articulate personal goals. Course objectives may include improvement of academic and interpersonal skills, organization skills, group process skills, and problem solving and critical-thinking skills. Advisories aimed at juniors and seniors often include a college and career exploration and planning component. This is a required course for all grade levels.

# ART

*The Art Department teaches students the essential skills that enable them to become creative problem solvers, expressive communicators, discerning consumers and culturally educated individuals. The Art curriculum is aligned with State and District Visual Arts curriculum standards. Students learn to recognize and use the visual arts as a language for communication. This is accomplished through knowing, understanding and applying the basic components that solve visual problems. They learn to understand and apply materials, techniques, technologies and processes. Learning to be more culturally sensitive and personally aware, students can find historical connections in their art and the work of others. They become visually literate through analyzing, interpreting and evaluating the characteristics, merits and meanings of works of art.*



Note: Students may take any Tier 2 or Tier 3 art class as a prerequisite for AP Studio Art. Students may take AP Studio Art using any materials (ceramics, photography, digital, sculpture, drawing or painting etc.) AP Art History does not have a prerequisite and can be taken by any student.

Creative Art - Comprehensive	
Recommended Grade	9, 10, 11, 12
Credit	.5 (one semester)
Prerequisite	None
Class Fee	\$35

Syllabus	<a href="#">Click Here for Creative Art Comprehensive Syllabus</a>
<p>Creative Art Comprehensive is the prerequisite for all other art classes at BMHS. This class provides students with the knowledge and opportunity to explore various materials and to create individual works of art. This course focuses on expanding students' exposure to a variety of art mediums, materials, and concepts. Creative Art Composition will cover the language, materials, and processes of a variety of art forms including but not limited to, drawing, painting, sculpture, printmaking and photography. If you're interested in any other art courses, the history of art, or a class that can open your eyes to new types of art, this class is for you.</p>	

Creative Art – Drawing/Painting	
Recommended Grade	9, 10, 11, 12
Credit	.5 (one semester)
Prerequisite	Creative Art - Comprehensive
Class Fee	\$35
Syllabus	<a href="#">Click Here for Drawing/Painting Syllabus</a>
<p>Drawing/Painting course covers the same topics as Creative Art Comprehensive, but focuses on improving technical skills of drawing and painting. This is the class to learn how to draw and paint (not just everyone who already knows how!). We will not only use wet and dry materials to improve technical skills like contour line, shading, figures, portraits, and spatial perception but also your personal expression and voice as an artist. Students will learn how to research as an artist and experiment in their sketchbooks to develop their own style and meaning.</p>	

Photography I	
Recommended Grade	9, 10, 11, 12
Credit	.5 (one semester)
Prerequisite	Creative Art - Comprehensive
Class Fee	\$45 + \$150 camera deposit
Syllabus	<a href="#">Click Here for Photography I Syllabus</a>



This is an introduction to photography class. Students will work to create artful photographs using 35mm film photography. This course will focus on understanding the camera, the process of capturing photographs, and printing photographs in the darkroom. This introduction class will expose students to the history of photography and new ways of thinking about photography in general. There are a variety of projects that allow students the freedom to explore the process of film as well as some non-traditional processes. If you're interested in chemistry, science, history, or math this art class could be for you. It is a pathway to Photography II which focuses on Digital photography.

## Photography II

<b>Recommended Grade</b>	<b>10, 11, 12</b>
<b>Credit</b>	<b>.5 (one semester)</b>
<b>Prerequisite</b>	<b>Photography I</b>
<b>Class Fee</b>	<b>\$45 + \$150 camera deposit</b>
<b>Syllabus</b>	<a href="#">Click Here for Photography II Syllabus</a>

Photography II is a project based class that will hone in on the skills gained in Photography I. The class will begin with a recap of film photography in the darkroom and finish with digital photography. New techniques will be introduced in lighting, composition, and process that will be applied to photojournalism, portraiture, product, and fine art photography. Students will be encouraged to work on their own photography style and solve all prompts creatively. They will reflect on their work through writing and critique. If you're interested

23

in photo editing, digital photography, iPhone photography, product design or business, this class will enhance those skills.

## Graphic Design

<b>Recommended Grade</b>	<b>9, 10, 11, 12</b>
<b>Credit</b>	<b>.5 (one semester)</b>
<b>Prerequisite</b>	<b>Creative Art - Comprehensive</b>
<b>Class Fee</b>	<b>\$35</b>
<b>Syllabus</b>	<a href="#">Click Here for Graphic Design Syllabus</a>

Graphic Design courses emphasize design elements and principles in the purposeful arrangement of images and text to communicate messages. Students focus on creating art using 2D design techniques by hand, printmaking techniques, and digital art techniques. Graphic Design will allow students to explore the ideas of logos, website creation, computer art, and marketing. We will research the history of graphic design and use that information to help inform our artwork and research our inspirations. If you're interested in clothing design, marketing, business, digital art, or related topics, this course is for you.

### Creative Art - Sculpture

<b>Recommended Grade</b>	<b>9, 10, 11, 12</b>
<b>Credit</b>	<b>.5 (one semester)</b>
<b>Prerequisite</b>	<b>Creative Art - Comprehensive</b>
<b>Class Fee</b>	<b>\$35</b>
<b>Syllabus</b>	<a href="#">Click Here for Creative Art Sculpture Syllabus</a>

Creative Art Sculpture will focus on 3-Dimensional design and creation. This is an advanced course in which we will use concept, design, and assemblage to express ourselves. Students will use a variety of materials in order to convey a message, show beauty and craftsmanship, and unique expressions. Students will explore the history of sculpture and the variety of concepts behind historical, modern, and contemporary pieces of sculpture. Students are encouraged to think outside of the box and use creative problem solving skills when working with a variety of new materials.

### Ceramics/Pottery I

<b>Recommended Grade</b>	<b>9, 10, 11, 12</b>
<b>Credit</b>	<b>.5 (one semester)</b>
<b>Prerequisite</b>	<b>Creative Art - Comprehensive</b>
<b>Class Fee</b>	<b>\$35</b>
<b>Syllabus</b>	<a href="#">Click Here for Ceramics I Syllabus</a>

Ceramics/Pottery covers all things clay! Students will make 3 dimensional works of art that are both functional (bowls, mugs, etc.) and sculptural out of a variety of clay and ceramic materials. We will study characteristics of the raw materials, their transformation under heat, and the various methods used to create and finish objects. Students can continue with clay or 3D art classes with Sculpture, Ceramics 2, and complete a 3D AP Art Portfolio.

### Ceramics II

<b>Recommended Grade</b>	<b>10, 11, 12</b>
--------------------------	-------------------

<b>Credit</b>	<b>.5 (one semester)</b>
<b>Prerequisite</b>	<b>Ceramics I</b>
<b>Class Fee</b>	<b>\$35</b>
<b>Syllabus</b>	<a href="#">Click Here for Ceramics II Syllabus</a>

24

Ceramics II builds upon knowledge and skills learned in Ceramics I with higher level functional and sculptural clay based projects. Students will create more complex vessels and designs using clay and ceramic materials while developing a personal voice in their pieces. There is an emphasis on experimentation and challenging oneself with new materials and techniques to create a unique ceramic work of art.

<b>Art Portfolio</b>	
<b>Recommended Grade</b>	<b>10, 11, 12</b>
<b>Credit</b>	<b>.5 (one semester)</b>
<b>Prerequisite</b>	<b>Creative Art – Comprehensive + one additional semester of any art course</b>
<b>Class Fee</b>	<b>\$35 per semester</b>
<b>Syllabus</b>	<a href="#">Click Here for Art Portfolio Syllabus</a>
<p>Art Portfolio is one-semester course that offers students the opportunity to create a body of work that reflects their personal voice and style. Students will work with new, higher level materials to build skills and methods of expression beyond what they are already proficient in. Materials are mostly 2D. There is a focus on the artist statement and discovering what each student is passionate about as an artist. This is a great pre-requisite to AP Studio art! This course can be taken instead of AP Studio as a high-level art class. Students are encouraged to share their work with scholarship and college interviews as well as display their work publicly.</p>	

<b>AP Art History</b>	
<b>Recommended Grade</b>	<b>10, 11, 12</b>
<b>Credit</b>	<b>.5 per semester (year-long)</b>
<b>Prerequisite</b>	<b>None</b>
<b>Class Fee</b>	<b>\$96 AP Fee</b>
<b>Syllabus</b>	<a href="#">Click Here for AP Art History Syllabus</a>

Interested in other cultures and diversity? Love to travel? Want to stand out to colleges? Need a year-long art credit for colleges? Or just think art is interesting? Art History is for you! This year-long discussion based class is designed to parallel college-level Art History courses through 250 diverse works of art. It provides the opportunity for students to critically examine architecture, sculpture, painting, and other art forms within their historical and cultural contexts. In covering the art of several centuries, students learn to identify different styles, techniques, and influences of various kinds of artwork to deepen their understanding of the world. Students sharpen their visual analysis and problem solving skills. It is NOT just memorizing facts, but rather understanding the artwork as a whole: how and why the art was made, what was going on in the world, and how the art reflects that time and culture it came from. The AP Art History test is similar to an AP World -like exam.

### AP Studio Art General Portfolio

<b>Recommended Grade</b>	<b>10, 11, 12</b>
<b>Credit</b>	<b>.5 per semester (year-long)</b>
<b>Prerequisite</b>	<b>Creative Art – Comprehensive + one additional semester of any art course + teacher approval</b>
<b>Class Fee</b>	<b>\$35 per semester + \$96 AP Fee</b>
<b>Syllabus</b>	<a href="#"><u>Click Here for AP Studio Art Syllabus</u></a>

Designed for independent students with a serious interest in art, AP Studio Art enables students to refine their skills and personal voice as an artist. The student will create their own unified body of work called their sustained investigation (15 images) to be submitted to the College Board for evaluation (no traditional AP test). The course is focused on inquiry of each individual artist, emphasizing questioning, experimentation,

process, research and technical skill as they make their own projects and discover what their art is about. Students may choose from one of three portfolios: drawing, 2D design, or 3D design. It is highly recommended that Portfolio class is taken prior to AP Studio Art for a 2D or Drawing portfolio, or ceramics and sculpture for a 3D portfolio. Students may take more than one year of AP Studio Art.

## BUSINESS EDUCATION

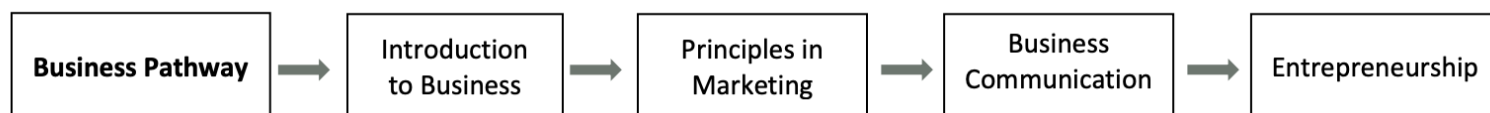
*Business education provides business and computer application skills to enhance every individual as a global ready student. Business education prepares students for entry into and advancement in today's technology forward academic and job market. Students who participate in these courses learn to communicate more effectively and develop a high performance skill set for demands of any type of workplace. Whether they choose to go on to further their academic studies in college, or join the workforce as a next step, Battle Mountain High School students will be better prepared for the demands of real world challenges.*

*State and local standards are met by incorporating many language arts, finance and computer skills into the*

*activities of the courses. Social Studies concepts are explored in our studies, as current events provide contemporary markers and trends in our business and technology climate today.*

*As a Career & Technical Certified Program with the State of Colorado, the Business Education Department and its instructors meet stringent standards and requirements set forth by the Colorado Department of Education.*

***In order to earn a CTE Completer Certificate in Business, students will need to follow the CTE Business Pathway:***



*Future Business Leaders of America is an integral part of the CCCS and BMHS Business Education program with approximately 10% of all BMHS students annually participating in this national organization.*

Computer Applications	
Recommended Grade	9, 10, 11, 12
Credit	.5 (one semester)
Prerequisite	None
Class Fee	None
Introduction to popular business Computer Applications such as Microsoft Word, Google Docs, Excel and PowerPoint. A project based course, students will learn important basic business skills like letter writing, resume drafting, spreadsheets, presentation skills, electronic file organization, typing and portfolio creation.	

Introduction to Business	
Recommended Grade	9, 10, 11, 12
Credit	.5 (one semester)
Prerequisite	None

Class Fee	None
-----------	------

Introduction to business introduces the application of fundamental business principles in local, national, and international forums. This course examines the relationship of economic systems, governance, regulations, and law upon business operations. It surveys the concepts of career development, business ownership, finance and accounting, marketing, management, operations, human resources, regulations, business ethics and computer applications.

### Principles of Marketing

<b>Recommended Grade</b>	<b>9, 10, 11, 12</b>
<b>Credit</b>	<b>.5 (one semester)</b>
<b>Prerequisite</b>	<b>Introduction to Business (only if completing CTE pathway)</b>
<b>Class Fee</b>	<b>None</b>

Principles of Marketing presents the analysis of theoretical marketing processes and the strategies of product development, pricing, promotion and distribution, and their applications to businesses and the individual consumer. Students will examine the psychology of marketing and how businesses use it to gain profit.

### Business Communications

<b>Recommended Grade</b>	<b>10, 11, 12</b>
<b>Credit</b>	<b>.5 (one semester)</b>
<b>Prerequisite</b>	<b>*If completing CTE pathway: Introduction to Business &amp; Principles of Marketing</b>
<b>Class Fee</b>	<b>None</b>

Business Communications emphasizes effective business writing and cover letters, memoranda, reports, application letters, and resumes. This course includes the fundamentals of business communication and communicating through advertising. Designed to help students develop an understanding and appreciation for effective communication in business situations and environments, Business Communications will emphasize all phases of communication: speaking, listening, thinking, responding, reading, writing, communicating non-verbally, and utilizing technology for communication. Business communication functions, processes, and applications in the context of business may be practiced through problem-based projects and real-world application.

### Entrepreneurship

<b>Recommended Grade</b>	<b>11, 12</b>
<b>Credit</b>	<b>.5 (one semester)</b>

<b>Prerequisite</b>	<b>Must be in 11<sup>th</sup> or 12<sup>th</sup> grade, must have taken or currently be taking English II. *If completing CTE pathway: Introduction to Business, Principles of Marketing, Business Communications</b>
<b>Class Fee</b>	<b>None</b>
<p>This course teaches entrepreneurial planning skills, from the development of a conceptual business to an actual, comprehensive business plan. This hands on approach includes one-on-one counseling with the instructor and community professionals. Guest speakers are an integral part of the course. Additional topics include marketing strategies and tactics, management, financial projections, networking, and funding options. The class will include a real world application.</p>	

<b>Miscellaneous Workplace Experience</b>	
<b>Recommended Grade</b>	<b>11, 12</b>
<b>Credit</b>	<b>.5 per semester</b>
<b>Prerequisite</b>	<b>None</b>
<b>Class Fee</b>	<b>None</b>
<p>This course is a supervised work-study opportunity for BMHS Junior or Senior students who can earn .5 credit for a minimum of 10 hours per week of paid employment during the semester. Students are expected to sign in daily and turn in all required paperwork including bi-monthly paychecks to verify employment. During the semester students will create a career portfolio including a resume, cover letter and career research work as well as being proficient at job interviewing. Students may enroll in this course for 4 semesters in order to earn a maximum of 2.0 credits.</p> <p><b><i>Students must have an approved job prior to the beginning of the semester.</i></b></p>	

<b>Career X</b>	
<b>Recommended Grade</b>	<b>11, 12</b>
<b>Credit</b>	<b>.5 per semester</b>
<b>Prerequisite</b>	<b>None</b>
<b>Class Fee</b>	<b>None</b>
<p>This course is designed to provide students with an off campus opportunity to research and experience a career pathway in a workplace setting. The course is open to 11/12<sup>th</sup> graders in good academic standing/GPA of 2.5 or better and no attendance issues. Students must be able to provide their own transportation. It will require a contract between the school and the business involving at least 5 hours per week/60 hours per semester in the work environment, a weekly log and journal, periodic meetings with a BMHS staff member and a presentation of the internship. Students need to contact businesses to set up this opportunity. Career X coordinators can provide a list of potential businesses and more detailed information on internship opportunities.</p>	

### CareerX Industry Certification

<b>Recommended Grade</b>	<b>11, 12</b>
<b>Credit</b>	<b>.5 per semester</b>
<b>Prerequisite</b>	<b>None</b>
<b>Class Fee</b>	<b>None</b>
<p>This course is typically organized as a mentorship with a teacher or outside professional, and enables students to conduct investigations related to their field(s) of interest. During this course, students can receive Industry Certification in one of the six fields, CompTia A+, AutoDesk Certified Professional, Certified Associate in Project Management, Salesforce Administrator Certification, Microsoft Office Certification, Adobe Certified Professional.</p>	

### Career Wise Apprenticeship

<b>Recommended Grade</b>	<b>11, 12</b>
<b>Credit</b>	<b>.5 per semester</b>
<b>Prerequisite</b>	<b>None</b>
<b>Class Fee</b>	<b>None</b>
<p>Formerly known as Self-Management, Personal and Career Readiness courses introduce students to the skills and strategies that are helpful in becoming more focused, productive individuals, wage earners, and family members. These courses typically emphasize goal-setting; decision making; managing time, energy,</p>	

and stress; and identifying alternatives and coping strategies. They may also allow students to explore various career and lifestyle choices.

### EVOM Environmental Pathway Program

<b>Recommended Grade</b>	<b>10, 11</b>
<b>Credit</b>	<b>.5 per semester</b>
<b>Prerequisite</b>	<b>None</b>
<b>Class Fee</b>	<b>None</b>



The Environmental Leadership class is a professional awareness course for BMHS Sophomores and Juniors to learn about outdoor and environmentally focused job. In this class students will visit a variety of Eagle County organizations and businesses who work in and for the environment and to address environmental stewardship problems. After the semester students will participate in paid internships in outdoor and environmental career fields with partnering organizations. Please contact Carrie Anderson, Walking Mountains Science Center Environmental Leadership Coordinator, at [carriea@walkingmountains.org](mailto:carriea@walkingmountains.org) or (970) 827 9725 x112 for more information.

## CONSUMER AND FAMILY STUDIES

*Standards for core classes in Consumer and Family Studies have been written and implemented on a statewide level. State standards in the core academic areas and consumer and family studies outcomes have been combined to reinforce the Colorado state standards. Assessments have been developed for each standard in the core of classes for consumer and family studies. When there are alternative assessments, there are rubrics to use in scoring. There is also a method established to maintain records for students to determine program completion.*

### Foods And Nutrition 1

<b>Recommended Grade</b>	<b>9, 10, 11, 12</b>
<b>Credit</b>	<b>.5 (one semester)</b>
<b>Prerequisite</b>	<b>None</b>
<b>Class Fee</b>	<b>\$50</b>

This is a one semester course designed to provide students with skills and knowledge needed for basic food preparation and nutrition. Topics covered will include an introduction to kitchen management, exploring dietary needs, basic baking and basic food preparation of all five-food groups.

### Foods And Nutrition 2

<b>Recommended Grade</b>	<b>9, 10, 11, 12</b>
<b>Credit</b>	<b>.5 (one semester)</b>
<b>Prerequisite</b>	<b>Food and Nutrition 1</b>
<b>Class Fee</b>	<b>\$50</b>

This is a one-semester course designed to build on Food and Nutrition I. Students will learn more advanced food preparation techniques and study nutrition in greater detail. Topics covered will include food combinations, advanced baking and cake decorating, using the food dollar, serving food to others, foods from other cultures, careers in food and nutrition and advanced nutrition including eating disorders.

### Foods And Nutrition 3

<b>Recommended Grade</b>	<b>11, 12</b>
<b>Credit</b>	<b>.5 (one semester)</b>
<b>Prerequisite</b>	<b>Junior and Senior</b>
<b>Class Fee</b>	<b>\$50</b>

Have you previously taken a cooking class here at BMHS and loved it? Are you looking for a class that would further challenge you and build your culinary skills? If you answered yes to these questions, this course is for you! Students would build upon the prior information and activities from their previous Family and Consumer Studies cooking classes. Food labs will include preparation of meat and poultry, fruits, vegetables, grain products, dairy, food combinations, baking, and international and seasonal foods. Additional topics will include food purchasing, careers in the food industry, nutrition, and more advanced culinary techniques.

### Caregiving

<b>Recommended Grade</b>	<b>9, 10, 11, 12</b>
<b>Credit</b>	<b>.5 per semester</b>
<b>Prerequisite</b>	<b>None</b>
<b>Class Fee</b>	<b>None</b>

Caregiving is a course where you will learn about taking care of others and yourself. Specifically, we will focus on caregiving for people with disabilities, elderly, and children/babies. Students will learn about various careers in caregiving and take field trips to visit different topics of caregiving facilities. Additionally, a large part of this course will be learning about self-care through mindfulness practices, nutrition and exercise, and emotional regulation. Students will also have the opportunity to become First Aid/CPR/AED certified through the American Red Cross. Upon completion of the course students will have the opportunity for an internship in their field of choice in caregiving.

## ENGLISH

*All students will develop reading, writing and speaking skills.*

### BMHS ENGLISH PROGRAM PATHWAYS

Grade	Grade Level Pathway (Regular Core)		Advanced Pathway (Advanced Core)
<b>9th</b>	English 1	<b>OR</b>	English 1 (Embedded Honors Contract)
<b>10th</b>	English 2	<b>OR</b>	AP English Language

<b>11th</b>	English 3	<b>OR</b>	DE English Literature I & II
<b>12th</b>	English 4	<b>OR</b>	DE English Composition I & II

**Please note the following regarding English classes and credits:**

- English Electives, Speech, Strategic Reading and/or Corrective Reading may be taken concurrently with any of the above pathways, based on interest or need.
- Only CORE classes that allow students to develop reading, writing, listening, and speaking skills based on ECS Units of Study can count as graduation requirements for English Language Arts.
- Students who do not pass a core class will need to retake that semester as soon as it is offered again (in most cases the following year) OR enroll in summer school.
- English electives, Public Speaking, Strategic Reading, and Corrective Reading may be taken concurrently with any of the above pathways based on staffing, interest or need

English Language Arts I	
<b>Recommended Grade</b>	<b>9</b>
<b>Credit</b>	<b>.5 per semester (year-long)</b>
<b>Prerequisite</b>	<b>None</b>
<b>Class Fee</b>	<b>None</b>
English Language Arts I builds upon FRESHMAN students' prior knowledge of grammar, vocabulary, word usage, and the mechanics of writing and includes the four aspects of language use: reading, writing, speaking, and listening. Typically, these courses introduce and define various genres of literature, with writing exercises often linked to reading selections. (Optional) Honors is available by contract within the context of this mainstream course. Honors is recommended in preparation for future AP/DE courses.	

English Language Arts II	
<b>Recommended Grade</b>	<b>10</b>
<b>Credit</b>	<b>.5 per semester (year-long)</b>
<b>Prerequisite</b>	<b>English Language Arts I</b>
<b>Class Fee</b>	<b>None</b>

English Language Arts II offers a balanced focus on composition and literature. Typically, SOPHOMORE students learn about the alternate aims and audiences of written composition by writing persuasive, critical, and creative multi-paragraph essays. Through the study of various genres of literature, students will improve their reading rate and comprehension, develop skills to determine the author's intent, understand theme, and recognize the techniques used by an author to deliver his or her message. (Optional) Honors is available by contract within the context of this mainstream course. Honors is recommended in preparation for future AP/DE courses.

### AP English Language & Composition

<b>Recommended Grade</b>	<b>10</b>
<b>Credit</b>	<b>.5 per semester (year-long)</b>
<b>Prerequisite</b>	<b>English Language Arts I, <i>Honors Highly Recommended</i> Strong English Teacher Recommendation STAR Reading score at or above 1200</b>
<b>Class Fee</b>	<b>\$96 AP Test Fee</b>

AP English Language & Composition is a college preparatory course in language and composition designed to help SOPHOMORES become skilled readers of prose and to become skilled writers who compose for a variety of purposes. Students will become aware of a writer's purpose, audience, and subject as well as the way conventions and language contribute to effective writing. Texts, including summer reading, need to be purchased for this course. *The course culminates in a required standardized AP exam in May. Students must successfully complete Semester 1 to continue into Semester 2.*

### English Language Arts III

<b>Recommended Grade</b>	<b>11</b>
<b>Credit</b>	<b>.5 per semester (year-long)</b>
<b>Prerequisite</b>	<b>English Language Arts II</b>
<b>Class Fee</b>	<b>None</b>

English Language Arts III continues to develop JUNIOR students with writing skills, emphasizing clear, logical writing patterns, word choice, and usage as students write essays and begin to learn the techniques of writing research papers. Students continue to read works of literature, which often form the backbone of the writing assignments. Literary conventions and stylistic devices may receive greater emphasis than in previous courses.

### DE English Literature I/CMC- Intro to Literature 1015

<b>Recommended Grade</b>	<b>11</b>
<b>Credit</b>	<b>.5 HS/3 CMC/semester</b>

<b>Prerequisite</b>	<b>Next Generation Accuplacer Writing scores 246-300; or equivalent ACT score 18 or SAT score 470</b> <b>Strong English Teacher Recommendation</b> <b>Successful Completion of AP English Language (Recommended)</b>
<b>Class Fee</b>	Texts need to be purchased by the student.
Introduces fiction, poetry, and drama. This course emphasizes active and responsive reading. This is a statewide Guaranteed Transfer course in the GT-AH2 category. Class size is limited to 25 students. Students <b>must</b> earn a “C” or better to earn college credit and to proceed to DE English Literature 2. Class-size is limited to 25 students. Students <b>must</b> earn a “C” or better to earn college credit. This is a junior class.	

<b>DE English Literature II/CMC- Literature 2022 British Literature Since 1770</b>	
<b>Recommended Grade</b>	<b>11</b>
<b>Credit</b>	<b>.5 HS/3 CMC/semester</b>
<b>Prerequisite</b>	<b>Next Generation Accuplacer Writing scores 246-300; or equivalent ACT score 18 or SAT score 470</b> <b>Strong English Teacher Recommendation</b> <b>Successful Completion of DE Intro to English Literature I with a “C” or better</b>
<b>Class Fee</b>	Texts need to be purchased by the student.
Examines major works of British literature from the 18th century to the present. Explores the historical, political, and social contexts of the works and the major themes which reflect and/or critique the social assumptions of the times. Besides fostering an understanding of works essential to western culture, the course examines how these works are still influential and relevant to contemporary thought and culture. Class-size is limited to 25 students. Students <b>must</b> earn a “C” or better to earn college credit. This is a junior class.	

<b>English Language Arts IV</b>	
<b>Recommended Grade</b>	<b>12</b>
<b>Credit</b>	<b>.5 per semester (year-long)</b>
<b>Prerequisite</b>	<b>English Language Arts III</b>
<b>Class Fee</b>	<b>None</b>

English Language Arts IV integrates and contextualizes college-level reading and writing into a cohesive whole as SENIOR students read selected complex texts and respond to information through writing. Students will primarily write informative and argumentative essays, but they may also conduct one major research project throughout the year. Focus is on college & career readiness.

DE English Composition 1 / CMC – ENG 1021	
Recommended Grade	12
Credit	.5 HS/3 CMC/semester
Prerequisite	Next Generation Accuplacer Writing scores 246-300; or equivalent ACT score 18 or SAT score 470 Strong English Teacher Recommendation Successful Completion of DE Lit or AP English Literature (Recommended)
Class Fee	Texts need to be purchased by the student.
<p>This SENIOR course emphasizes an understanding of the different modes of writing as well as planning, writing and revising. Critical and logical thinking skills will be emphasized in both oral and written work. There will be a minimum of four processed compositions and two on-demand compositions that stress analytical, informational, and argumentative writing. Class-size is limited to 25 students. Students <b>must</b> earn a “C” or better to earn college credit. This is a senior class.</p>	

DE English Composition 2 / CMC – ENG 1022	
Recommended Grade	12
Credit	.5 HS/3 CMC/semester
Prerequisite	Next Generation Accuplacer Writing scores 246-300; or equivalent ACT score 18 or SAT score 470 Strong English Teacher Recommendation Successful Completion of DE English Composition 1 with a C- or better
Class Fee	Texts need to be purchased by the student.
<p>This SENIOR course expands and refines the objectives of English Composition 1. It emphasizes critical and logical thinking and reading, problem definition, and research strategies to compose informational and/or persuasive papers that incorporate research. Class-size is limited to 25 students. To earn college credit, students <b>must</b> earn a “C” or better. This is a senior class.</p>	

Public Speaking	
Recommended Grade	9, 10, 11, 12
Credit	.5 ( <i>Elective Credit Only</i> )
Prerequisite	None
Class Fee	None
<p>The focus of this semester course is every aspect of communication: skills needed for real communication, inter- and intra-personal skills, oral interpretation, storytelling, public speaking and persuasion. Students</p>	

will give four speeches during the semester including a debate. *This course earns elective credit.*

### Strategic Reading

Recommended Grade	9, 10, 11, 12
Credit	.5 ( <i>Elective Credit Only</i> )
Prerequisite	Students may be added to this class based on a need indicated from STAR Reading, READ Plans, GPA, teacher recommendations, and/or self-registration.
Class Fee	None

Strategic Reading is an elective course intended to improve a student's vocabulary, critical-thinking and analysis skills, and/or reading rate and comprehension level. Although this courses typically emphasizes works of fiction, it also includes works of nonfiction (including textbooks, texts, articles and resources from other content classes). Strategic Reading course often has a time-management focus, offering strategies for note taking for understanding and evaluating the important points of a text. This course will focus on individual strengths and areas of improvement to create greater success as a high school reader, learner, and student.

Please note: *Advanced Placement and Dual Enrollment courses are electives that earn English credit. Issues that might, from particular social, historical, or cultural viewpoints, be considered controversial, including references to ethnicities, nationalities, religions, races, dialects, gender, or class, may be addressed in texts that are appropriate for these advanced, elective courses. If you are concerned about reading texts regarding these topics, you should take the standard English course for your grade level.*

## ENGLISH LANGUAGE ACQUISITION

*The goal of the English Language Development (ELD) Department is to assist students that are English Language Learners (ELLs) as they acquire both English language skills and specific course content. We strive to honor a students' home culture and language(s) and act as liaison between home and school. Learning necessary academic English to be successful in school is the priority.*

### English Language Development 1 (ELD 1)

Recommended Grade	9, 10, 11, 12
Credit	.5/semester (year-long) English Language Arts
Prerequisite	ELL Teacher Approval, concurrently enrolled in English Language Enrichment 1 (ELE 1)

<b>Class Fee</b>	<b>None</b>
<p>In this course, newcomer and beginning ELL (NEP) students will develop fundamental English acquisition skills through reading informative and fiction texts at an appropriate level. Beginning English Language Arts skills and concepts are introduced while offering opportunities to improve speaking, listening and writing skills. May be taken twice for an English Language Arts credit, if needed. <b>Students must be concurrently enrolled in English Language Enrichment 1.</b></p>	

<b>English Language Development 2 (ELD 2)</b>	
<b>Recommended Grade</b>	<b>9, 10, 11, 12</b>
<b>Credit</b>	<b>.5/semester (year-long) English Language Arts</b>
<b>Prerequisite</b>	<b>ELD Teacher Approval/Concurrently enrolled in English Language Enrichment 2 (ELE 2)</b>
<b>Class Fee</b>	<b>None</b>
<p>In this course, intermediate ELL (High NEP/LEP) students will continue their development of English acquisition skills by reading more complex informative and fiction texts. Intermediate Language Arts skills will be developed while offering opportunities to improve speaking, listening and writing skills in order to prepare students for ELA 1. May be taken twice for an English Language Arts credit, if needed. <b>Students must be concurrently enrolled in English Language Enrichment 2.</b></p>	

<b>English Language Arts 1 (WITH Concurrent ELE 3 Support Class Option)</b>	
<b>Recommended Grade</b>	<b>9, 10, 11, 12</b>
<b>Credit</b>	<b>.5/semester (year-long) English</b>
<b>Prerequisite</b>	<b>ELD Teacher and English Language Arts Teacher Approval/Concurrent Enrollment in English Language Enrichment 3 (ELE 3) Option</b>
<b>Class Fee</b>	<b>None</b>
<p>In this course, high-Intermediate and advanced ELL (LEP) students will continue to develop their English Language Arts skills through reading literature and exploring other relevant topics. Refer to the ELA 1 course description for more details. Instructors will determine the readiness of a student for this level. May be taken twice for English Language Arts Credit as needed. <b>Students are strongly encouraged to be enrolled in English Language Enrichment 3.</b></p>	

<b>English Language Arts 2, 3, or 4</b>	
<b>Recommended Grade</b>	<b>10, 11, 12</b>



<b>Credit</b>	<b>.5/semester (year-long) English</b>
<b>Prerequisite</b>	<b>ELD Teacher and English Language Arts Teacher Approval</b>
<b>Class Fee</b>	<b>None</b>
<p>In this course, advanced English language learners (LEP and Long-Term) will access grade-level language arts content. See ELA 2, 3 and 4 course descriptions for more information. Placement is based on a body of evidence and determined by ELD and ELA teachers. May be taken twice for English Language Arts Credit, as needed. Can be taken concurrently with English Language Arts 4 (ELA 4) to support a student, if needed.</p>	

## ENGLISH SUPPORT ELECTIVES

<b>Strategic Reading</b>	
<b>Recommended Grade</b>	<b>9, 10, 11, 12</b>
<b>Credit</b>	<b>.5 (<i>Elective Credit Only</i>)</b>
<b>Prerequisite</b>	<b>Students may be added to this class based on a need indicated from STAR Reading, READ Plans, GPA, AND teacher recommendation.</b>
<b>Class Fee</b>	<b>None</b>
<p>Strategic Reading is an elective course that uses the <i>Read 180</i> Program to improve a student's vocabulary, critical-thinking, analysis skills, reading rate and comprehension level. This course emphasizes works of fiction and nonfiction (including textbooks, texts, articles and resources from other content classes). In addition to reading improvement, Strategic Reading offers strategies for note taking and time-management. This course will focus on individual strengths and areas of need to create greater success as a high school reader, learner, and student.</p>	

<b>English Language Enrichment 1 (ELE 1)</b>	
<b>Recommended Grade</b>	<b>9, 10, 11, 12</b>
<b>Credit</b>	<b>.5/semester (semester or year-long) Elective</b>
<b>Prerequisite</b>	<b>ELD Teacher Approval</b>
<b>Class Fee</b>	<b>None</b>

In this course, newcomer and beginning ELL (NEP) students will explore beginning English language acquisition skills, concepts, and topics, including beginning English reading skills and vocabulary. Students are also introduced to US cultures and traditions, as well as needed social-emotional wellness skills to be successful in the classroom and community.

### English Language Enrichment 2 (ELE 2)

<b>Recommended Grade</b>	<b>9, 10, 11, 12</b>
<b>Credit</b>	<b>.5/Semester (Year-Long) Elective</b>
<b>Prerequisite</b>	<b>ELD Teacher Approval</b>
<b>Class Fee</b>	<b>None</b>
Intermediate ELL (High NEP/ LEP) students will explore the necessary English language acquisition skills to support students across content areas, including intermediate language-based strategies and vocabulary. Students are instructed in various strategies with the primary goal to support academic language development across content classes.	

### English Language Enrichment 3 (ELE 3)

<b>Recommended Grade</b>	<b>9, 10, 11, 12</b>
<b>Credit</b>	<b>.5/semester (semester or year-long) Elective</b>
<b>Prerequisite</b>	<b>ELD Teacher Approval</b>
<b>Class Fee</b>	<b>None</b>
In this course, high-Intermediate and advanced ELL (LEP) students will be directly supported in their concurrent ELA 1 class. This course aims to continue developing English Language Arts skills using various academic language support strategies and other accommodations, as needed, to ensure success in ELA 1. Refer to the ELA 1 course description for more details. May be taken twice for English Language Arts Credit as needed. <b>Students must be enrolled in English Language Enrichment 3 concurrently.</b>	

### English Language Learner Tutorial (English Language Enrichment 4/ELE 4)

<b>Recommended Grade</b>	<b>9, 10, 11, 12</b>
<b>Credit</b>	<b>.5/Semester (Semester or Year-long) Elective</b>
<b>Prerequisite</b>	<b>ELD Teacher Approval</b>
<b>Class Fee</b>	<b>None</b>

In this course, ELL and FEP students can acquire extra support and time to complete content area class work with literacy and study skill support to further develop independence and usage of English. Cross-content strategies, post-graduation goals, and social-emotional wellness are explicitly taught. Instructors can be ELD teachers, Avid teachers, or content area teachers, as needed. Students may be enrolled in English Language Arts 2, 3, or 4.

## INDUSTRY AND TECHNOLOGY EDUCATION

*Students in the Industrial Technology classes are encouraged to “explore” various offerings within the program to gain a full exposure to the various facets of technology. As students’ progress through the program, they should have some exploration in the area of manufacturing, construction, communication, transportation, power and energy. As a natural progression toward technological literacy, students should be taking their study of a particular system to a higher level. The program is striving to offer classes which would allow students to do this through adherence to state standards.*

### Video Production I

<b>Recommended Grade</b>	<b>9, 10, 11, 12</b>
<b>Credit</b>	<b>.5 (one semester)</b>
<b>Prerequisite</b>	<b>None</b>
<b>Class Fee</b>	<b>\$30</b>

Video Production I is an entry-level, one semester course where students will be learning the technical aspects of digital video editing, camera work, lighting, etc. Students will complete an in-class short video as well as a personal video of their choice. This is the prerequisite course for Audio/Visual Production.

### Audio/Visual Production (Video II)

<b>Recommended Grade</b>	<b>10, 11, 12</b>
<b>Credit</b>	<b>.5 (one semester)</b>
<b>Prerequisite</b>	<b>Video Production 1</b>
<b>Class Fee</b>	<b>\$45 per semester</b>

Audio/Visual Production is a second level class in which students participate in all of the various jobs required to produce a television program. Directing, camera operation, talent, and technical support, as just a few of the areas explored. The class produces a series of short edited video projects for airing. Students concentrate on storyboard and script development as it applies to fictional and documentary productions while journalism and advertising techniques are also explored. Projects during this course will be short films, documentaries, music videos that focus on creative and artistic expression. This course

earns technology credit.

### **Drafting Technical/Mechanical**

<b>Recommended Grade</b>	<b>9, 10, 11, 12</b>
<b>Credit</b>	<b>.5 (one semester)</b>
<b>Prerequisite</b>	<b>None</b>
<b>Class Fee</b>	<b>\$30</b>

The goal of Mechanical Drafting is to establish a basic understanding of applications for technical design. The class gives students experience in layout, technical sketching, accurate measurement, 3-view drawings, pictorial drawings, section views, etc. Students will be introduced to manual drafting methods and then those skills will be transferred to Computer Aided Drafting where many more concepts will be covered including both 2D and 3D techniques.

### **Drafting Architecture**

<b>Recommended Grade</b>	<b>10, 11, 12</b>
<b>Credit</b>	<b>.5 (one semester)</b>
<b>Prerequisite</b>	<b>None</b>
<b>Class Fee</b>	<b>\$30</b>

During the course of Drafting Architecture, students will cover history, design types, planning, room layout, foundations, framing, electrical, plumbing, HVAC, materials evaluation, and sets of working drawings. The current trends of architecture along with building codes and regulations in the area will be investigated within this course. There will be a focus on learning architectural software as students work on designing residential buildings.

### **Building Skills I**

<b>Recommended Grade</b>	<b>9, 10, 11, 12</b>
<b>Credit</b>	<b>.5 (one semester)</b>
<b>Prerequisite</b>	<b>None</b>
<b>Class Fee</b>	<b>\$30</b>

Building Skills is designed to give students the opportunity to explore their interests and aptitudes for a career in the construction industry. Students work in teams of two covering 20 construction trade areas. These are the areas explored: Blueprint reading Skills, Cabinetmaking Skills, Communications Skills, Concrete Skills, Drywall Skills, Electrical Skills, Estimation Skills, Finish Carpentry Skills, Green Construction Skills, Hand, Tool Skills, HVAC Skills, Masonry Skills, Painting Skills, Plumbing Skills, Power Tool Skills, Roof Framing Skills, Surveying & Site Planning, Tile Setting Skills, Wall Framing Skills, Weatherization Skills. **(Health insurance or school liability coverage required.)**

### Building Skills II

<b>Recommended Grade</b>	<b>9, 10, 11, 12</b>
<b>Credit</b>	<b>.5 (one semester)</b>
<b>Prerequisite</b>	<b>Building Skills I</b>
<b>Class Fee</b>	<b>\$30</b>

Building Skills II is a continuation of Building Skills I. In this course students complete the remaining construction trade areas left unexplored in the first semester. Independent building projects are also encouraged in this second level class. **(Health insurance or school liability coverage required.)**

### CMC CONSTRUCTION TRADES I

<b>Recommended Grade</b>	<b>11, 12</b>
<b>Credit</b>	<b>.5 (one semester)</b>
<b>Prerequisite</b>	<b>None</b>
<b>Class Fee</b>	<b>None</b>

#### **CAR 103 - Carpentry Basic (4cr)**

Provides a basic introduction to construction work for all crafts, safety concerns and procedures, and the safety and use of hand and power tools. This course specifically applies to construction work. Some things covered in this semester long class are wood materials, fasteners, adhesives, measuring tools, safety, professionalism, job-site hazards, ladders and scaffolds, care and maintenance of hand and power tools.

### CMC CONSTRUCTION TRADES II

<b>Recommended Grade</b>	<b>11, 12</b>
<b>Credit</b>	<b>.5 (one semester)</b>
<b>Prerequisite</b>	<b>C- or higher in DE Construction Trades I</b>
<b>Class Fee</b>	

This is a 1 semester course that include the following, 4 week long courses:

**CMC CAR 115 – Form and Foundation Systems (1 CMC credit)**

Covers materials and methods for concrete forms and foundations. Includes various reinforcement methods such as re-bar and welded-wire fabric. Some things covered in this class are cement, forms, testing of concrete, reinforcement bars, and welded wire reinforcement.

**CMC CAR 123 – Roof Framing (1 CMC credit)**

40

Describes the various kinds of roofs and contains instructions for laying out rafters for gable roofs, hip roofs and valley intersections. Coverage includes both stick-built and truss-built roofs. Subjects covered in this class include terms of roof framing, gable and hip roofs, rafters, trusses, using a framing square, sheathing, and estimating materials.

**CMC CAR 125 – Roofing Materials & Methods (1 CMC credit)**

Covers application techniques and estimation of asphalt and wood roofing products and accessories including gutters and flashing. This course covers identifying materials and methods of roofing, installation of materials and flashing and alternative methods.

**CMC CAR 150 – Interior Trim (1 CMC credit)**

Covers material choices and installation techniques of various interior trim, including interior doors, baseboard, and casement. Includes an overview of additional interior trim choices. This course focuses on installing doors, baseboards, casements, moldings, and tile.

**CMC CONSTRUCTION TRADES III**

<b>Recommended Grade</b>	<b>11, 12</b>
<b>Credit</b>	<b>.5 (one semester)</b>
<b>Prerequisite</b>	<b>C- or higher in DE Construction Trades I &amp; II</b>
<b>Class Fee</b>	

This is a 1 semester course that include the following:

**CAR 134- Exterior Finishes and Trim (4 CMC credits)**

Utilizes hands-on techniques to illustrate exterior moisture, trim, and exterior door and window installation. Student will explore various residential materials and methods. Estimation of time and material will be discussed as well as general business practices. This course focuses on thermal and moisture protection, estimating time and materials, effective and efficient installation of exterior doors, windows, roofing materials, siding and trim.

**HWE 103- Comm First Aid & CPR (1 credit)**

Prepares the student for certification in CPR and Basic First Aid. Skills will include basic life support, airway obstruction, control of bleeding, shock, and patient care for the unconscious. This course also covers the Emergency Medical System, cardiovascular disease and diagnosis.

**CMC CONSTRUCTION TRADES IV**

<b>Recommended Grade</b>	<b>11, 12</b>
<b>Credit</b>	<b>.5 (one semester)</b>
<b>Prerequisite</b>	<b>C- or higher in DE Construction Trades I, II, III</b>
<b>Class Fee</b>	

This is a 1 semester course that include the following:

**CMC CAR 136- Remodeling, Renovation/Additions (4 CMC credits)**

Covers conversions of attic and basement spaces to usable living spaces and additions for renovation to existing residential structures, including kitchens and baths. Examines materials scheduling, estimation, and construction methods. This advance class covers elements of design, blueprints and working drawings, mechanical drawings, permits and code compliance, estimates, planning and remodeling.

**CMC EIC 124- Electrical Safety Requirements (1 CMC credit)**

41

Focuses on training that is 100% practical and deals with every important aspect of OSHA's electrical safety related work practices and how they apply. Teaches the safe installation and maintenance of electrical equipment. Covers the use of personal protective equipment, electrical hazards and analyzation of electrical conditions.

# INTERNATIONAL LANGUAGES

*The Foreign Language Department emphasizes the ability to communicate coherently in both speaking and writing, and the ability to gather information by listening and reading. Cultural aspects of native language countries are also presented.*

## Spanish Placement Testing Protocol

**Native speakers of Spanish** will take a two- part written exam consisting of a 30-question multiple choice test for 40 minutes, a 20-minute writing section responding to an email on paper, and providing an answer to a specific question.

**Non-Native Spanish Speakers** will take a written exam consisting of writing different paragraphs in 60 minutes. The writing will be corrected and the student will either be placed in Spanish 1, 2, 3, and 4.

Spanish I	
Recommended Grade	9, 10, 11, 12
Credit	.5 per semester (year-long)
Prerequisite	None
Class Fee	\$30 may apply
This is a course in beginning (first year) Spanish for students who have had a little or no previous exposure to the language. Emphasis is on understanding, speaking, reading and writing Spanish. The class includes an introduction to Hispanic culture.	

Spanish II	
Recommended Grade	9, 10, 11, 12
Credit	.5 per semester (year-long)
Prerequisite	Spanish I or Proficiency
Class Fee	\$30 may apply
This is a course in intermediate (second year) Spanish and is a continuation of Spanish 1. The emphasis is on vocabulary expansion, grammar, conversation, reading, writing and culture. Students with significant prior experience in Spanish should consult with the instructor to determine if they are eligible for this course as their initial course.	

## Spanish III



<b>Recommended Grade</b>	<b>9, 10, 11, 12</b>
<b>Credit</b>	<b>.5 per semester (year-long)</b>
<b>Prerequisite</b>	<b>Spanish II or Proficiency</b>
<b>Class Fee</b>	<b>\$30 may apply</b>
This is an advanced Spanish class and is a continuation of Spanish 2. Emphasis is on conversation, composition and reading. The class is conducted primarily in Spanish.	

Spanish IV	
<b>Recommended Grade</b>	<b>9, 10, 11, 12</b>
<b>Credit</b>	<b>.5 per semester (year-long)</b>
<b>Prerequisite</b>	<b>Spanish III or Proficiency</b>
<b>Class Fee</b>	<b>\$30 may apply</b>
This course is conducted in Spanish and emphasizes advanced level listening, speaking, composition, reading and grammar. It is appropriate for juniors who have completed Spanish 3. In some cases, it may be appropriate for native or bilingual speakers.	

Spanish for Native Speakers	
<b>Recommended Grade</b>	<b>9, 10, 11, 12</b>
<b>Credit</b>	<b>.5 per semester (year-long)</b>
<b>Prerequisite</b>	<b>Native Spanish Speaker</b>
<b>Class Fee</b>	<b>\$30 may apply</b>
<p>Spanish for Native Speakers 1 supports, reinforces, and expands students' knowledge of their own tongue. Because students understand at least the rudiments and structure of the language and have a working vocabulary (to a greater or lesser degree), Spanish for Native Speakers courses often move faster than regular Spanish foreign language courses and emphasize literary development (with a study of literature and composition).</p> <p>Spanish for Native Speakers 2 builds on grammar and writing with an emphasis on developing paragraphs to write essays. Students will write a 5 paragraph essay by the end of the year. The class will introduce the 6 themes of AP/DE Spanish; Global Challenges, Science and Technology, Contemporary Life, Personal and Public Identities, Families and Communities, and Beauty and Aesthetics. Students with "native-like proficiency" may be placed into this class, i.e. if they have been in a dual language program. This class is equivalent to a Spanish V.</p>	

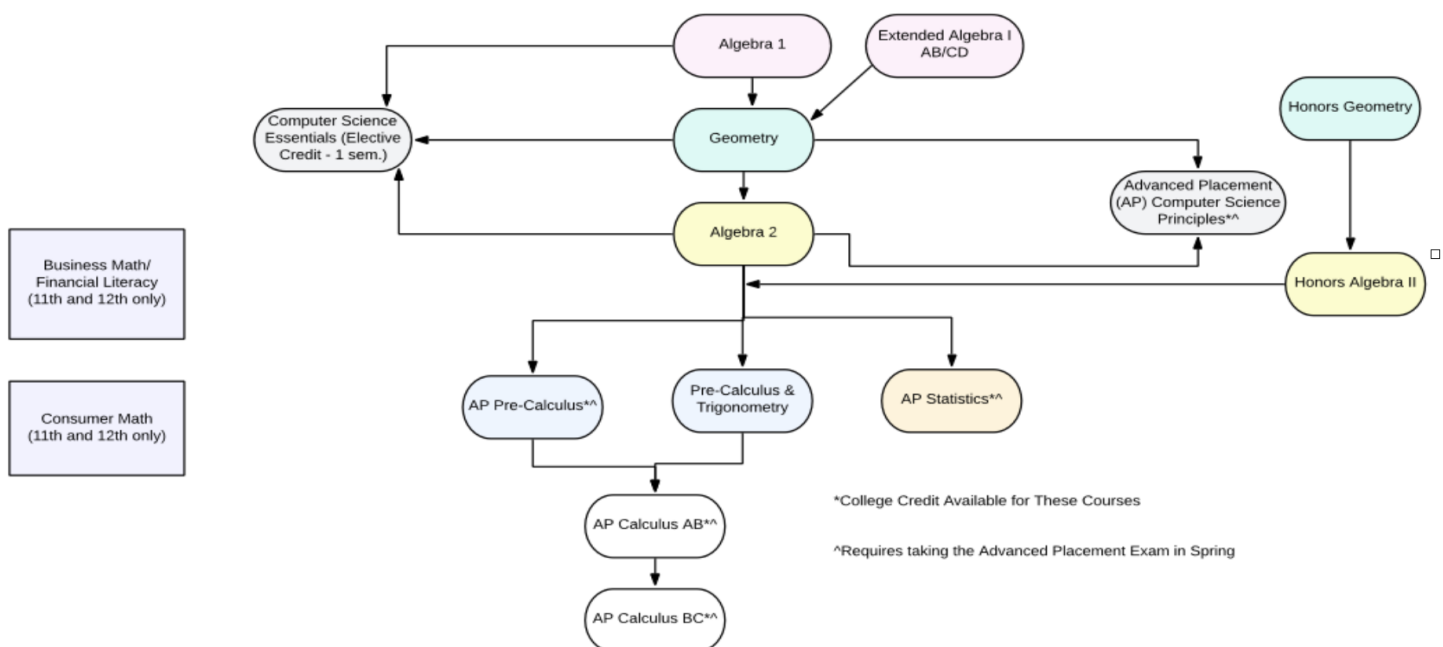
# MATHEMATICS

Eagle County Schools' goal is to educate every student for success. The Common Core State Standards (CCSS) have significantly raised the level of rigor for mathematics. ECS embraces this new challenge and in order to help all students achieve, is following the Algebra 1, Geometry, Algebra II sequence, as recommended in the CCSS. As a result, students will be taking the traditional pathway which incorporates all four of the mathematics standards (Number Sense, Properties, and Operations; Patterns, Functions, and Algebraic Structures; Data Analysis, Statistics, and Probability; and Shape, Dimension, and Geometric Relationships) **each** year. Students will have rigorous problem solving throughout the three traditional courses. Students must pass each semester of Algebra I (2 semesters), Geometry (2 semesters), and Algebra II (2 semesters) with a 70% (traditional) or 2 (Standards based grading) or greater in order to continue into the next course in sequence.

Sheltered Algebra

Sheltered Geometry

## BMHS MATH FLOW OF COURSES



### Algebra 1

Recommended Grade	9, 10, 11
Credit	.5 per semester (year-long course, 2 semesters)
Prerequisite	Diagnostic Test or Pre-Algebra or equivalent
Class Fee	None

This class is the first in the math course sequence in high school and will guide students through topics including expressions, equations, systems of equations, functions, real numbers, inequalities, exponents, polynomials, radicals, rational expressions, and quadratic equations. This class starts a student's high school math sequence of Algebra I, Geometry, and Algebra II. In order to move on to the next level math class, a student must earn a 70% (traditional) or 2 (SBG) or better.

### Extended Algebra 1A, 1B, 1C, 1D

<b>Recommended Grade</b>	<b>9, 10, 11</b>
<b>Credit</b>	<b>.5 per semester (2 year-long course, 4 semesters)</b>
<b>Prerequisite</b>	<b>Diagnostic Test or equivalent</b>
<b>Class Fee</b>	<b>None</b>
<b>Outline</b>	<b>Year 1: 1<sup>st</sup> sem. 1A, 2<sup>nd</sup> sem. 1B Year 2: 1<sup>st</sup> sem. 1C, 2<sup>nd</sup> sem. 1D</b>

This class is the first in the math course sequence in high school and will guide students through topics including expressions, equations, systems of equations, functions, real numbers, inequalities, exponents, polynomials, radicals, rational expressions, and quadratic equations. This class starts a student's high school math sequence of Algebra I, Geometry, and Algebra II. This class is specifically created for students who struggle learning math concepts. This is the same as the Algebra 1 course – however, the course is spread over TWO years instead of one. The course moves at a slower pace, spends more days on concepts, and most work is completed in class. Pre-Algebra will be incorporated in the 1<sup>st</sup> semester of this course (1A.) In order to move on to the next level math class, a student must earn a 70% (traditional) or 2 (SBG) or better.

### Business Math/Financial Literacy

<b>Recommended Grade</b>	<b>11, 12</b>
<b>Credit</b>	<b>.5 (Fall semester)</b>
<b>Prerequisite</b>	<b>70% (traditional) or 2 (SBG) or better in Algebra 1</b>
<b>Class Fee</b>	<b>None</b>

The Business Math course reinforces general math skills, an emphasis on speed and accuracy in computations, and uses these skills in a variety of business and personal applications. Students will be able to apply arithmetic, ratios, proportions, formulas, and simple equations, whether it is in business or life. Material covered includes wages, hourly rates, payroll deductions, sales, receipts, balance sheets, profit and loss, investments, insurance, budgets, taxes, simple and complex interest, along with identity theft and fraud. Upon completion of this course, students will have a solid foundation with Financial Literacy both in a business environment and their personal lives. Students must have successfully completed Algebra 1 with a 70% (traditional) or 2 (SBG) or better to take this course **AND** be either in 11<sup>th</sup> or 12<sup>th</sup> grade.

### Consumer Math

<b>Recommended Grade</b>	<b>11, 12</b>
<b>Credit</b>	<b>.5 (Spring semester)</b>
<b>Prerequisite</b>	<b>70% (traditional) or 2 (SBG) or better in Algebra 1</b>
<b>Class Fee</b>	<b>None</b>

This course is designed to focus on everyday applications of basic math skills as they are applied to real life topics. This is a branch of math that uses everyday situations such as calculating taxes, finding interest rates on a loan, creating a monthly budget, as well as investing money, learning about credit and more. This course is to help students prepare to make sound financial decisions that will impact them throughout life. Students must have successfully completed Algebra 1 with a 70% (traditional) or 2 (SBG) or better to take this course **AND** be either in 11<sup>th</sup> or 12<sup>th</sup> grade.

### Geometry

<b>Recommended Grade</b>	<b>9, 10, 11, 12</b>
<b>Credit</b>	<b>.5 per semester (year-long course, 2 semesters)</b>
<b>Prerequisite</b>	<b>70% (traditional) or 2 (SBG) or better in Algebra 1</b>
<b>Class Fee</b>	<b>None</b>

Geometry is the second in the high school math course sequence and is designed to study the properties and applications of common geometric figures in two and three dimensions. It includes the study of lines and transformations. Triangle units on congruence, relationships, similarity, and right triangle trigonometry are included. Students will work with coordinate geometry, circles, and quadrilaterals and apply their properties to real world situations. Inductive and deductive thinking skills will be used in problem solving situations. Basic proofs and probability will conclude the course. In order to move on to the next level math class, a student must earn a 70% (traditional) or 2 (SBG) or better.

Honors Geometry	
Recommended Grade	9th only
Credit	.5 (year-long course, 2 semesters)
Prerequisite	90% (traditional) or 3.5 (SBG) or better in Algebra 1 <b><u>AND</u></b> be a Freshmen
Class Fee	None
<p>Honors Geometry is for <b><u>freshmen only</u></b> (in a true honors course, students are at least one grade level above average) and is designed to study the properties and applications of common geometric figures in two and three dimensions. It will include the same curriculum as the regular Geometry course, but at a faster pace and in more depth. Students are expected to own a TI-84 graphing calculator. In order to move on to the next level math class, a student must earn a 80% (traditional) or 3 (SBG) or better to move onto Honors Algebra II. ^A student's body of evidence will be examined to be <b><u>placed</u></b> in an honors course.</p>	

Algebra II	
Recommended Grade	9, 10, 11, 12
Credit	.5 per semester (year-long course, 2 semesters)
Prerequisite	70% (traditional) or 2 (SBG) or better in Geometry or equivalent
Class Fee	None
<p>Algebra 2 is the third math course in high school and will guide you through, among other things, linear equations, inequalities, graphs, matrices, polynomials and radical expressions, quadratic equations, functions, exponential and logarithmic expressions, sequences and series, probability, and trigonometry. In order to move on to the next level math class, a student must earn a 70% (traditional) or 2 (SBG) or better.</p>	

Honors Algebra II	
Recommended Grade	9 and 10 only
Credit	.5 (year-long course, 2 semesters)
Prerequisite	90% (traditional) or 3.5 (SBG) or better in Honors Geometry <b><u>AND</u></b> be a Freshmen or Sophomore.
Class Fee	None
<p>Honors Algebra II is for <b><u>freshmen and sophomores only</u></b> (in a true honors course, students are at least one grade level above average). It will include the same curriculum as the regular Algebra II course, but at a faster pace and in more depth. Students are expected to own a TI-84 graphing calculator. In order to move on to the next level math class, a student must earn a 80% (traditional) or 3 (SBG) or better. ^A student's body of evidence will be</p>	

examined to be **placed** in an honors course.

### Trigonometry/Pre-Calculus

Recommended Grade	10, 11, 12
Credit	.5 semester (year-long course, 2 semesters)
Prerequisite	70% (traditional) or 2 (SBG) or better in Algebra II
Class Fee	None

This course is for college bound students. It is designed to prepare students for calculus and satisfy selective college entrance requirements. Concepts include: study of linear, quadratic, exponential and logarithmic, polynomials, rational functions, trigonometry, matrices, conics, and limits. In order to move onto the next level math class, a student must earn a 70% (traditional) or 2 (SBG) or better.

### AP Pre-Calculus\*

Recommended Grade	10, 11, 12
Credit	.5 semester (year-long course, 2 semesters)
Prerequisite	80% (traditional) or 2 (SBG) or better in Algebra II
Class Fee	\$96 AP Exam Fee

This course is for college bound students and provides an excellent foundation for calculus but also serves as an appropriate capstone mathematics course that will open pathways to success in STEM fields. The curriculum, while remaining true to traditional precalculus topics such as logarithmic and trigonometric functions, includes additional tools and skills such as the use of logarithmic scales, and modeling discrete dynamical systems with matrices. These together with an emphasis on rates of change and applications provide students with the mathematical knowledge and skills that will prove tremendously beneficial in biology, chemistry, environmental science, kinesiology, and other sciences. This is a rigorous and challenging course designed to offer students a chance to earn college credit by earning a score of 3 or higher on the AP Pre-Calculus exam in the spring<sup>+</sup>. In order to move onto the next level math class, a student must earn a 70% (traditional) or 2 (SBG) or better. **Students are required to take the AP exam.**

### AP Statistics\*

Recommended Grade	11, 12
Credit	.5 per semester (year-long course, 2 semesters)
Prerequisite	70% (traditional) or 2 (SBG) or better in Algebra II

<b>Class Fee</b>	<b>\$96 AP Exam Fee</b>
<p>AP Statistics is an introductory college level statistics course. Statistics, the science of gathering and interpreting data, is an essential part of most fields of science and many business, medical, and government activities. In addition to helping prepare students for advanced study and challenging careers, the ability to critically evaluate information has valuable lifelong benefits for making decisions about important personal issues such as diet, health care, and investments. Nowadays most social science, health sciences, and business majors require a statistics course. We will frequently use technology to calculate values; however, we need to be able to interpret these numbers in a logical and systematic way. There will be a lot of reading and writing involved in this course. This Advanced Placement (AP) course runs for a full high school academic year. Strangely, a good AP score in World History is a good predictor of how you may do in Statistics. This is a rigorous and challenging course designed to offer students a chance to earn college credit by earning a score of 3 or higher on the AP Statistics exam in the spring<sup>+</sup>. Students are expected to own a TI-84 graphing calculator. <b>Students are <u>required</u> to take the AP exam.</b></p>	

<b>AP Calculus AB*</b>	
<b>Recommended Grade</b>	<b>10, 11, 12</b>
<b>Credit</b>	<b>.5 per semester (year-long course, 2 semesters)</b>
<b>Prerequisite</b>	<b>80% or better in a Trig./Pre-Calc. course</b>
<b>Class Fee</b>	<b>\$96 AP Exam Fee</b>
<p>AP Calculus AB topics covered during the first semester will include functions, graphs, limits, continuity, derivatives, and applications of differentiation. This Advanced Placement (AP) course runs for a full high school academic year. The content is comparable to Calculus I courses offered in colleges and universities. Topics covered during the second semester will include interpretations and properties of integrals, applications of integrals, Fundamental Theorem of Calculus, techniques and applications of anti-differentiation and numerical approximations of definite integrals. The course teaches students to approach calculus concepts and problems when they are represented graphically, numerically, analytically, and verbally, and to make connections amongst these representations. Students learn how to use technology to help solve problems, experiment, interpret results, and support conclusions. This is a rigorous and challenging course designed to offer students a chance to earn college credit by earning a score of 3 or higher on the AP Calculus AB exam in the spring<sup>+</sup>. A TI-84 or TI-84 Plus graphing calculator is required. <b>Students are <u>required</u> to take the AP exam.</b></p>	

<b>AP Calculus BC*</b>	
<b>Recommended Grade</b>	<b>11, 12</b>
<b>Credit</b>	<b>.5 per semester (year-long course, 2 semesters)</b>

<b>Prerequisite</b>	<b>Score of 2 or higher on the AP Calculus AB Exam in previous Spring.</b>
<b>Class Fee</b>	<b>\$96 AP Exam Fee</b>
<p>AP Calculus BC is roughly equivalent to both first and second semester college Calculus (1 and 2) courses and extends the content learned in AB to different types of equations and introduces the topic of sequences and series. The AP course covers topics in differential and integral calculus, including concepts and skills of limits, derivatives, definite integrals, the Fundamental Theorem of Calculus, and series. The course teaches students to approach calculus concepts and problems when they are represented graphically, numerically, analytically, and verbally, and to make connections amongst these representations. Students learn how to use technology to help solve problems, experiment, interpret results, and support conclusions. This Advanced Placement (AP) course runs for a full high school academic year. This is a rigorous and challenging course designed to offer students a chance to earn college credit by earning a score of 3 or higher on the AP Calculus BC exam in the spring*. A TI-84 or TI-84 Plus graphing calculator is required. <b>Students are <u>required</u> to take the AP exam.</b></p>	

<b>Computer Science Essentials</b>	
<b>Recommended Grade</b>	<b>9, 10, 11, 12</b>
<b>Credit</b>	<b>.5 per semester (1 semester, elective credit)</b>
<b>Prerequisite</b>	<b>70% (traditional) or 2 (SBG) or better in Algebra I</b>
<b>Class Fee</b>	<b>None</b>
<p>This course introduces students to computer science as a vehicle for problem solving, communications, and personal expression. As a whole, this one semester course focuses on visible aspects of computing and computer science and encourages students to see where computer science exists around them and how they can engage with it as a tool for exploration and expression. Topics include learning how a thorough user-center design process produces a better application, how data is used to address problems that affect large numbers of people, and how physical computing with circuit boards allows computers to collect input and return output in a variety of ways.</p>	

<b>AP Computer Science Principles*</b>	
<b>Recommended Grade</b>	<b>10, 11, 12</b>
<b>Credit</b>	<b>.5 per semester (year-long course, 2 semesters, elective credit)</b>
<b>Prerequisite</b>	<b>70% (traditional) or 2 (SBG) or better in Geometry</b>
<b>Class Fee</b>	<b>\$96 AP Exam Fee</b>



Following the College Board’s suggested curriculum designed to mirror college-level computer science courses, the AP Computer Science Principles course is designed to be equivalent to a first-semester introductory college computing course. In this course students will develop computational thinking skills vital for success across all disciplines, such as using computational tools to analyze and study data and working with large data sets to analyze, visualize, and draw conclusions from trends. The course engages students in the creative aspects of the field by allowing them to develop computational artifacts based on their interests. Students will also develop effective communication and collaboration skills by working individually and collaboratively to solve problems and will discuss and write about the impacts these solutions could have on their community, society, and the world. This is a rigorous and challenging course designed to offer students a chance to earn college credit by earning a score of 3 or higher on the AP Computer Science Principles exam in the spring<sup>+</sup>. This Advanced Placement (AP) course runs for a full high school academic year. **Students are required to take the AP exam.**

### Sheltered Algebra/Geometry

**Recommended  
Grade**

**9, 10, 11, 12**

**Credit**

**.5 per semester (year-long course, 2 semesters)**

**Prerequisite**

**Teacher recommendation**

**Class Fee**

**None**

This class will be on an **as needed basis** and meet a variety of math levels for qualified students. Students will be placed in either course after an initial evaluation by a math teacher. This class is for students who are learning the English language (ELL level 1) and have limited math skills. This course will earn math credit for BMHS graduation, **but is not considered an appropriate course for higher education math requirements.**

*<sup>+</sup>Passing scores on the Advanced Placement (AP) exams vary by college and university.*

## MUSIC

*Music at BMHS offers a variety of experiences ranging from the first year musician to the experienced. Upon the completion of a music course or sequence of courses, you will have the ability to continue life-long learning and an appreciation for the arts. Valuable self- discipline skills and self-confidence will be gained through music ensembles.*

### Low-Voice Choir

**Recommended Grade**

**9, 10, 11, 12**

<b>Credit</b>	<b>.5 per semester (year-long)</b>
<b>Prerequisite</b>	<b>Non-audition</b>
<b>Class Fee</b>	<b>\$30</b>
<p>This performing ensemble is a singing experience for students who are interested in studying vocal techniques. This choir is for students who do not have prior choral training and will study multi-genre repertoire, theory (including sight singing), history and cultural discussions. Mandatory performances will be part of the grade for this class. Performances include music contests, festivals, athletic events, pep rallies and community concerts. Students must take at least 2 semesters and conductor permission is required to drop.</p>	

<b>High-Voice Choir</b>	
<b>Recommended Grade</b>	<b>9, 10, 11, 12</b>
<b>Credit</b>	<b>.5 per semester (year-long)</b>
<b>Prerequisite</b>	<b>Non-audition</b>
<b>Class Fee</b>	<b>\$30</b>
<p>This performing ensemble is a singing experience for students who are interested in studying vocal techniques. This choir is for students who do not have prior choral training and will study multi-genre repertoire, theory (including sight singing), history and cultural discussions. Mandatory performances will be part of the grade for this class. Performances include music contests, festivals, athletic events, pep rallies and community concerts. Students must take at least 2 semesters and conductor permission is required to drop.</p>	

<b>Mixed-Voice Chorus</b>	
<b>Recommended Grade</b>	<b>9, 10, 11, 12</b>
<b>Credit</b>	<b>.5 per semester (year-long)</b>
<b>Prerequisite</b>	<b>Audition</b>
<b>Class Fee</b>	<b>\$30</b>
<p>This course is designed to meet the needs of students interested in a more intense study of vocal performance. The choir will present a series of concerts throughout the year as well as compete in choral competitions. Students wishing to participate in solo and ensemble events as well as individual competitions such as honor choirs and All-State will have the opportunity to do so. A portion of each class period will be devoted to strengthening sight reading skills and improving vocal technique. Students must take at least 2 semesters and conductor permission is required to drop.</p>	

<b>Introduction to Theatre</b>
--------------------------------

<b>Recommended Grade</b>	<b>9, 10, 11, 12</b>
<b>Credit</b>	<b>.5 (one semester)</b>
<b>Prerequisite</b>	<b>None</b>
<b>Class Fee</b>	<b>None</b>
<p>Theater arts courses focus on the study and performance of drama including musical theater. These courses review a wide range of scripted materials, such as plays, readers' theatre scripts, dramatic criticism, creation of original dramatic works and the role of dramatic arts in society. In addition, students will work collaboratively on performances and study the historical background of the theater throughout the ages.</p>	

<b>Theatre II</b>	
<b>Recommended Grade</b>	<b>9, 10, 11, 12</b>
<b>Credit</b>	<b>.5 (one semester)</b>
<b>Prerequisite</b>	<b>Introduction to Theatre or teacher recommendation</b>
<b>Class Fee</b>	<b>None</b>
<p>Theater II will emphasize how to create, perform and critically respond in relation to character development in improvised and scripted works. Students will also perform/analyze a student directed work. Students will pursue and learn about Technical elements and design within the theater. Students will enhance their abilities in expression, imagination, and appreciation in group dynamics while interpreting the use of scripted material. Prerequisite: Intro to Theater unless student provides signature of the teacher.</p>	

<b>Symphonic Band</b>	
<b>Recommended Grade</b>	<b>9, 10, 11, 12</b>
<b>Credit</b>	<b>.5 per semester (year-long)</b>
<b>Prerequisite</b>	<b>None</b>
<b>Class Fee</b>	<b>\$30</b>
<p>Symphonic Band is open to all students interested in performing on a wind or concert percussion instrument. Most students have 1-3 years of experience performing on their instrument, but motivated beginners are welcome. This group performs in two evening concerts per semester. Students in this band are not required, but highly encouraged to be in pep band (extracurricular). Instructor permission is required to drop.</p>	

Wind Ensemble	
<b>Recommended Grade</b>	<b>9, 10, 11, 12</b>
<b>Credit</b>	<b>.5 per semester (year-long)</b>
<b>Prerequisite</b>	<b>Symphonic Band or audition</b>
<b>Class Fee</b>	<b>\$30</b>
<p>Wind Ensemble is an auditioned ensemble. Students who play wind or concert percussion instruments perform high-level literature at two evening concerts per semester. Students must take at least 2 semesters. Active participation in pep band (extracurricular) is required to be in this ensemble. Instructor permission is required to drop.</p>	

Orchestra	
<b>Recommended Grade</b>	<b>9, 10, 11, 12</b>
<b>Credit</b>	<b>.5 per semester (year-long)</b>
<b>Prerequisite</b>	<b>None</b>
<b>Class Fee</b>	<b>\$30</b>

<p>String Orchestra is open to all students interested in performing on violin, viola, cello, or string bass. Most students have 1-3 years of experience performing on their instrument, but motivated beginners are welcome. Students must take at least 2 semesters and instructor permission is required to drop.</p>
--

JV Drumline	
<b>Recommended Grade</b>	<b>9, 10, 11, 12</b>
<b>Credit</b>	<b>.5 per semester (year-long)</b>
<b>Prerequisite</b>	<b>None</b>
<b>Class Fee</b>	<b>None</b>
<p>JV Drumline is a performance-focused class for students who are serious about learning marching percussion techniques. Most students have percussion experience, but motivated beginners are welcome. Students will learn techniques for performing on marching percussion instruments (snare drum, bass drum, tenor drums, and cymbals). Weekly performances include athletic events, pep rallies, concerts, and community concerts. Students must take at least 2 semesters and teacher permission is required to drop.</p>	

Varsity Drumline	
<b>Recommended Grade</b>	<b>9, 10, 11, 12</b>
<b>Credit</b>	<b>.5 per semester (year-long)</b>
<b>Prerequisite</b>	<b>Audition Required</b>
<b>Class Fee</b>	<b>None</b>
<p>Varsity Drumline is an auditioned, performance-focused class for students who are serious about learning marching percussion techniques. Must have prior drumline experience. Students will continue to develop skills performing on marching percussion instruments (snare drum, bass drum, tenor drums, and cymbals). There is a heavy extra-curricular component to this class. Weekly performances include athletic events, pep rallies, concerts, and community concerts. Students must take at least 2 semesters and teacher permission is required to drop.</p>	

Guitar I	
<b>Recommended Grade</b>	<b>9, 10, 11, 12</b>
<b>Credit</b>	<b>.5 (one semester)</b>
<b>Prerequisite</b>	<b>None</b>
<b>Class Fee</b>	<b>None</b>
<p>Guitar class is designed for the first-time musician. Students are welcome to use a school instrument or bring their own acoustic or classical guitars. By the end of the semester, students will learn first position chords, strumming, and note reading. Assessments include written tests, playing proficiencies and in-class performances.</p>	

Guitar II	
<b>Recommended Grade</b>	<b>9, 10, 11, 12</b>
<b>Credit</b>	<b>.5 (one semester)</b>
<b>Prerequisite</b>	<b>Passing grade in Guitar I or audition</b>
<b>Class Fee</b>	<b>None</b>
<p>Guitar 2 is designed for the intermediate musician. Students are welcome to use a school instrument or bring their own acoustic or classical guitars. This class builds on the skills learned in Guitar I and introduces more advanced topics, including fingerpicking, barre chords, and songwriting. Assessments include written tests, playing proficiencies and in-class performances.</p>	

Piano I	
<b>Recommended Grade</b>	<b>9, 10, 11, 12</b>
<b>Credit</b>	<b>.5 (one semester)</b>
<b>Prerequisite</b>	<b>None</b>
<b>Class Fee</b>	<b>None</b>
<p>No prior experience is required to take this class. Many students find their first piano class challenging. However, with the proper approach and consistent practice, anyone can grasp the skills necessary to enjoy the keyboard. Students will learn in a classical style and apply that knowledge to modern styles.</p>	

Piano II	
<b>Recommended Grade</b>	<b>9, 10, 11, 12</b>
<b>Credit</b>	<b>.5 (one semester)</b>
<b>Prerequisite</b>	<b>Passing grade in Piano I or audition</b>
<b>Class Fee</b>	<b>None</b>
<p>A passing grade in piano 1, or an audition with Mr. Walker demonstrating knowledge of music literacy and piano skills, is required to take this class. Students will learn in a classical style and apply that knowledge to modern styles.</p>	

Music Technology I	
<b>Recommended Grade</b>	<b>9, 10, 11, 12</b>
<b>Credit</b>	<b>.5 (one semester)</b>
<b>Prerequisite</b>	<b>None</b>
<b>Class Fee</b>	<b>None</b>
<p>This project-based course allows students to explore the fundamentals of music creation through the use of technology. Students will be introduced to contemporary musical concepts through the use of digital audio software and multimedia applications.</p>	

Music Technology II	
<b>Recommended Grade</b>	<b>9, 10, 11, 12</b>
<b>Credit</b>	<b>.5 (one semester)</b>

<b>Prerequisite</b>	<b>Passing grade in Music Technology I</b>
<b>Class Fee</b>	<b>None</b>
This project-based course will build on the skills students have learned in Music Technology I. This is an advanced-level course that focuses on real-world applications. Students must have successfully completed Music Technology I before taking this course.	

<b>Music Theory</b>	
<b>Recommended Grade</b>	<b>10, 11, 12</b>
<b>Credit</b>	<b>.5 (one semester)</b>
<b>Prerequisite</b>	<b>Preferred Music Background</b>
<b>Class Fee</b>	<b>None</b>
Music Theory courses provide students with an understanding of the fundamentals of music and include one or more of the following topics: composition, arrangement, analysis, aural development, and sight reading.	

## PHYSICAL EDUCATION

*The objective of Physical Education is to contribute to the physical, mental, emotional and social development of the student through participation in a variety of physical activities. The program is organized so that each student has the opportunity to participate in a variety of indoor and outdoor sports. Upon completion of the high school physical education program, students will be able to demonstrate the following standards: Be able to apply physical education to life.*

- *Be able to demonstrate knowledge and skills which will better enable participation in individual and team sports.*
- *Be able to assess physical fitness level and participate in activities that improve physical fitness, wellness and cardiovascular fitness.*
- *Be able to demonstrate knowledge and skills that better enable participation in sports and recreational activities.*
- *Possess an awareness and respect for individual and cultural differences through a variety of physical education activities.*

**ALL FRESHMEN WILL TAKE BOTH PE1 AND HEALTH AT BMHS. These credits must be earned on the BMHS campus.**

<b>Physical Education 1</b>	
<b>Recommended Grade</b>	<b>9, 10, 11, 12</b>

<b>Credit</b>	<b>.5 (one semester)</b>
<b>Prerequisite</b>	<b>None</b>
<b>Class Fee</b>	<b>None</b>
<p>Physical Education 1 allows students to explore a number of both team and individual sports. Our hope is to provide information that not only enhances the body physically, but mentally and emotionally as well. Our philosophy is: "The stronger the body becomes the more sound the mind and soul become." We accomplish this goal by promoting a variety of both team and individual sports along with the basic fitness testing and fitness programs. Students will be introduced to some of the following activities: softball, lacrosse, golf, flag football, hiking, basketball, volleyball, team handball, badminton, pickle ball, floor hockey, tumbling, snowshoeing, fitness training and testing. Students are required to dress out for class on a daily basis (shirts, shorts, sweats, socks and shoes). Regular attendance and participation are essential for the awarding of this credit. Students are required to dress for physical activity. This course is <b>required</b> of all 9<sup>th</sup> graders.</p>	

<b>Physical Education 2</b>	
<b>Recommended Grade</b>	<b>10, 11, 12</b>
<b>Credit</b>	<b>.5 (one semester)</b>
<b>Prerequisite</b>	<b>Physical Education I or Lifetime Fitness</b>
<b>Class Fee</b>	<b>None</b>
<p>This class covers both a combination of team and individual sports as well as types of fitness training. The activities covered are similar to those in Physical Education 1, however, the level of play is higher and the units will last longer than in Physical Education 1 to allow further development of skills, strategies and competition. Students are required to dress for physical activity.</p>	

<b>Lifetime Fitness</b>	
<b>Recommended Grade</b>	<b>9, 10, 11, 12</b>
<b>Credit</b>	<b>.5 (one semester)</b>
<b>Prerequisite</b>	<b>None</b>
<b>Class Fee</b>	<b>None</b>
<p>This course emphasizes acquiring knowledge and skills regarding lifetime physical fitness. Content includes topics such as yoga, pilates &amp; spin cycling. Student may develop and implement a personal fitness plan.</p>	

<b>Strength &amp; Conditioning 1</b>	
<b>Recommended Grade</b>	<b>9, 10, 11</b>
<b>Credit</b>	<b>.5 (one semester)</b>



<b>Prerequisite</b>	<b>None</b>
<b>Class Fee</b>	<b>None</b>
<p>This coeducational course is directed toward students who want to participate in weight training. The emphasis of this class will be on creating a foundation for proper strength training form and safety, while improving on strength and flexibility. This class will focus but not be limited to: bench press, power clean, squat, leg press, lunge, plyometric, military press, and incline press. Students are required to dress for physical activity.</p>	

<b>Strength &amp; Conditioning 2</b>	
<b>Recommended Grade</b>	<b>10, 11, 12</b>
<b>Credit</b>	<b>.5 (one semester)</b>
<b>Prerequisite</b>	<b>Strength &amp; Conditioning 1</b>
<b>Class Fee</b>	<b>\$10</b>
<p>This course is directed toward students who want to participate in a more rigorous weight training course, with a focus on functional strength and the ability to improve overall strength and endurance and safety in strength training. The focus is also giving students the tools for health and fitness for life.</p>	

<b>Strength &amp; Conditioning for Athletes</b>	
<b>Recommended Grade</b>	<b>9, 10, 11, 12</b>
<b>Credit</b>	<b>.5 (one semester)</b>
<b>Prerequisite</b>	<b>Strength &amp; Conditioning 1 and participant of CHSAA sanctioned sport</b>
<b>Class Fee</b>	<b>\$10</b>
<p>This course is directed at student athletes who want to participate in a higher intensity weight training course designed for athletes, with a focus on sport-specific functional strength, stabilization, and safety in strength training. The focus is also giving students the tools for health and fitness for life.</p>	

<b>Strength &amp; Conditioning for Females</b>	
<b>Recommended Grade</b>	<b>9, 10, 11, 12</b>
<b>Credit</b>	<b>.5 (one semester)</b>
<b>Prerequisite</b>	<b>none</b>
<b>Class Fee</b>	<b>\$10</b>

This course is directed at student athletes who want to participate in a higher intensity weight training course designed for athletes, with a focus on sport-specific functional strength, stabilization, and safety in strength training. The focus is also giving students the tools for health and fitness for life.

#### **Zero Hour Strength & Conditioning for Athletes**

<b>Recommended Grade</b>	<b>10, 11, 12</b>
<b>Credit</b>	<b>.5 (one semester)</b>
<b>Prerequisite</b>	<b>Strength &amp; Conditioning 1 and participant of CHSAA sanctioned sport</b>
<b>Class Fee</b>	<b>None</b>

This course is directed toward students who want to participate in a more rigorous weight training course, with a focus on functional strength and the ability to improve overall strength and endurance and safety in strength training. The focus is also giving students the tools for health and fitness for life. This course runs during zero hour.

#### **Outdoor Recreational Activities I**

<b>Recommended Grade</b>	<b>10, 11, 12</b>
<b>Credit</b>	<b>.5 (one semester)</b>
<b>Prerequisite</b>	<b>Physical Education I or Lifetime Fitness</b>
<b>Class Fee</b>	<b>\$25</b>

This class allows the student to explore a variety of outdoor recreational activities. In addition, the student will participate in physical fitness, wellness, and cardiovascular fitness activities. Students will be introduced to a variety of outdoor recreational activities including: Stand Up Paddle board, Bouldering/Rock Climbing, Archery, Golf, Snowshoeing, Broomball, Ice Skating and Tubing.

#### **Outdoor Recreational II**

<b>Recommended Grade</b>	<b>10, 11, 12</b>
<b>Credit</b>	<b>.5 (one semester)</b>
<b>Prerequisite</b>	<b>Outdoor Recreation I</b>
<b>Class Fee</b>	<b>\$25</b>

This course is for adventurous students who want to take advantage of opportunities in our valley and potentially earn certifications, internships, and/or employment. This course will provide students with knowledge, experience, and an opportunity to develop skills in more than one recreational sport or outdoor pursuit (such as adventure activities, croquet, Frisbee, wall climbing, bocce ball, fishing, hiking, cycling, and more).

#### Skier Release

<b>Recommended Grade</b>	<b>9, 10, 11, 12</b>
<b>Credit</b>	<b>.5 (one semester)</b>
<b>Prerequisite</b>	<b>None</b>
<b>Class Fee</b>	<b>None</b>

This course will be offered in the second semester. Students enrolled in this course need to participate on the BMHS alpine ski team. The on-hill training ends after the state tournament in February; after the state tournament the students will participate in an on-campus PE class. This option leaves the student enrolled in only 6 of 7 classes. Students interested in pursuing other academic options should talk to their counselor about potential options on their own expense.

#### BMHS Interscholastic Athletics

<b>Recommended Grade</b>	<b>9, 10, 11, 12</b>
<b>Credit</b>	<b>.25 per sport season</b>
<b>Prerequisite</b>	<b>None</b>
<b>Class Fee</b>	<b>None</b>

One quarter of physical education credit will be given for each successful sport season completed as determined by the coach. A maximum of one credit may be applied toward the physical education requirement. Athletes must complete the season to receive credit. **This is only for CHSAA sanctioned sports.**

#### Sports Physiology (Athletic Training)

<b>Recommended Grade</b>	<b>11, 12</b>
<b>Credit</b>	<b>.5</b>
<b>Prerequisite</b>	<b>Anatomy/Physiology or AP/DE Biology</b>
<b>Class Fee</b>	<b>\$25</b>

Courses in Sports Physiology examine human anatomy and physiology specifically as they pertain to human movement and physical performance in sports activities. This course will also emphasize the prevention and treatment of athletic injuries as well as athletic taping and bracing. As a rigorous sports medicine based course, this is most appropriate for students hoping to pursue a career in athletic training, physical therapy, kinesiology or orthopedic medicine.

Health	
Recommended Grade	9, 10, 11, 12
Credit	.5 (one semester)
Prerequisite	None
Class Fee	None
This course is a study of current health issues and is required for all graduates. Topics include physical fitness, nutrition, human sexuality, emotional and social development, chemical abuse, holistic health and disease prevention, stress management, safety and first aid. <b>This course is required for graduation.</b>	

## SCIENCE

*The Science curriculum at BMHS is one which allows students to experience a continuum of activities which emphasize the State standards. The curriculum should be thought of as a dynamic document that will be continually revisited and revised to accommodate new knowledge and new applications. This curriculum reflects a core of learning which we believe is necessary and appropriate for all young people regardless of their circumstances or career goals. Students will be held accountable for learning this curriculum, but they will also be given the opportunity to investigate beyond the boundaries of the core curriculum. We believe that science literacy can help the individual become a compassionate problem solver and it can provide humanity with many of the tools necessary for progress to be made towards a safe, sustainable and economically sound global community.*

Physics & Geology	
Recommended Grade	9
Credit	.5 per semester (year-long)
Prerequisite	None
Class Fee	None

The 9th Grade Science Curriculum is divided into 2 semester-long topics: Physics and Geology. Physics is a laboratory science course in which students learn the fundamental properties and interactions of matter and energy. Students use understanding of force, gravity and other concepts described by Isaac Newton to describe and predict the motion of objects. Geology is a laboratory science course in which students study the composition and dynamics of the earth, shaping of the earth's surface through interactions with the atmosphere and energy in earth events.

### Sheltered Physics & Geology

<b>Recommended Grade</b>	<b>9, 10, 11, 12</b>
<b>Credit</b>	<b>.5 per semester (year-long)</b>
<b>Prerequisite</b>	<b>None</b>
<b>Class Fee</b>	<b>None</b>
This is an entry-level investigative science class designed for second language learners. Basic scientific lab and communication skills are taught with an emphasis on reading, writing and, speaking English. The curriculum follows the same sequence as 9th-grade Physics and Geology.	

### STEM – Geology & Physics Focus

<b>Recommended Grade</b>	<b>9, 10, 11, 12</b>
<b>Credit</b>	<b>.5 (one semester)</b>
<b>Prerequisite</b>	<b>Algebra 1</b>
<b>Class Fee</b>	<b>None</b>
This semester-long course is designed for students with a strong interest in science, technology, engineering, and mathematics. Students take part in learning experiences framed around answering Big Questions or addressing collaborative challenges that guide students to deeper understanding of STEM related topics. Students use engineering design principles to conduct investigations, make models, collect and analyze data, provide explanations, and present findings. In addition to self-driven Project-Based inquiry activities, Students have the opportunity to choose from several modules designed to guide them through a variety of learning objectives. Modules include: Environmental Engineering, Robotics and Automation, Alternative Energy, and Transportation Technology.	

### Biology

<b>Recommended Grade</b>	<b>9, 10, 11, 12</b>
<b>Credit</b>	<b>.5 per semester (year-long)</b>

<b>Prerequisite</b>	<b>Geophysical Science or Score in top 10% of Science Placement Test Out</b>
<b>Class Fee</b>	<b>None</b>
<p>This lab-based class provides an introduction to basic biological concepts. Students will apply chemical and physical concepts learned in <i>Physical Science</i> to the study of life. Topics include cell function, biochemistry, genetics, evolution, and ecology. Students will complete a variety of labs, including microscopic investigations, simulations, and field observations as they gain an increased understanding of their internal and external environment.</p>	

Chemistry	
<b>Recommended Grade</b>	<b>10, 11, 12</b>
<b>Credit</b>	<b>.5 per semester (year-long)</b>
<b>Prerequisite</b>	<b>Algebra 1</b>
<b>Class Fee</b>	<b>None</b>
<p>This course provides students with an introduction to chemistry. It is designed to inspire students' interest in chemistry and prepare them for college-level work. Emphasis is on inquiry and critical thinking skills including: problem solving, mathematical reasoning, and experimental investigations. Topics of study include the structure of matter, states of matter, the Periodic Table, chemical names and formulas, chemical reactions, stoichiometry, solutions, the behavior of gasses, and organic chemistry.</p>	

Chemistry - Advanced Studies	
<b>Recommended Grade</b>	<b>10, 11, 12</b>
<b>Credit</b>	<b>.5 per semester (year-long)</b>
<b>Prerequisite</b>	<b>Completion of Geometry with a grade of A or B and teacher recommendation</b>
<b>Class Fee</b>	<b>None</b>
<p>Chemistry – Advanced Studies cover chemical properties and interactions in more detail than basic chemistry classes. Topics may include organic chemistry, thermodynamics, electrochemistry, macromolecules, kinetic theory, and nuclear chemistry in addition to the topics covered in basic chemistry.</p>	

AP/DE Chemistry    CMC CHE 111	
<b>Recommended Grade</b>	<b>11, 12</b>
<b>Credit</b>	<b>5 per semester HS/ 5 year-long CMC</b>

<b>Prerequisite</b>	<b>Completion of high school chemistry, Algebra II (pre or corequisite), Accuplacer Reading 246+ and Math Accuplacer AAF 245+</b>
<b>Class Fee</b>	<b>AP Exam Fee \$94</b>
<p>This is a Colorado Mountain College Course that focuses on basic chemistry and measurement, matter, chemical formulas, reactions and equations, stoichiometry and thermochemistry. This course covers the development of atomic theory culminating in the use of quantum numbers to determine electron configurations of atoms, and the relationship of electron configuration to chemical bond theory and molecular orbital theory. The course includes gasses, liquids, and solids and problem-solving skills are emphasized through laboratory experiments. This course is one of the Statewide Guaranteed Transfer courses. GT-SC1. This is a 2 semester class and students must finish both semesters and earn a C or better to earn 5 total college credits. The total is 5 college credits for the entire year. <i>The AP Chemistry Exam is <b>required</b> to be taken at the end of the year.</i></p>	

<b>Anatomy &amp; Physiology</b>	
<b>Recommended Grade</b>	<b>11, 12</b>
<b>Credit</b>	<b>.5 (one semester)</b>
<b>Prerequisite</b>	<b>Biology is required and Chemistry is recommended</b>
<b>Class Fee</b>	<b>None</b>
<p>Usually taken after a comprehensive initial study of biology, Anatomy and Physiology courses present the human body and biological systems in more detail. The course is designed for students who are interested in pursuing a career in sport science, health, or medicine. It emphasizes exercise science but also addresses a variety of disease states and health issues. Learning activities include laboratory investigations, in-depth research, and application of biochemistry to exercise science, current events, and evaluation of injuries. This course can be a prerequisite for Sports Physiology.</p>	

<b>Botany</b>	
<b>Recommended Grade</b>	<b>11, 12</b>
<b>Credit</b>	<b>.5 (one semester)</b>
<b>Prerequisite</b>	<b>Biology</b>
<b>Class Fee</b>	<b>None</b>
<p>This course is targeted for students who want a deeper understanding of the world of plants and designed to explore the diversity, structure and human connection with plants. Students will investigate plants in the field, on-campus greenhouse and in laboratory. Throughout the course, practical applications of plants, and the study of Rocky Mountain native plants will be emphasized. This is a one-semester course that will include field botany, plant diversity, evolution, anatomy, plant genetics, horticulture and ethnobotany.</p>	

AP Physics I	
<b>Recommended Grade</b>	<b>10, 11, 12</b>
<b>Credit</b>	<b>.5 per semester (year-long)</b>
<b>Prerequisite</b>	<b>Algebra II or IM 3</b>
<b>Class Fee</b>	<b>AP Exam Fee \$94</b>
<p>AP Physics is an Advanced Placement course to be taken for 2 semesters. This course is an overview of the fundamental principles that govern the universe; topics covered include the motion of objects, force, energy, matter, thermal energy, magnetism, electricity and wave phenomena. An investigative approach is emphasized to improve skills such as observation, problem solving, critical thinking, and data analysis. A working knowledge of algebraic manipulations of variables and basic trigonometry is required. <i>Students are required to take the AP exam.</i></p>	

AP Physics II	
<b>Recommended Grade</b>	<b>10, 11, 12</b>
<b>Credit</b>	<b>.5 per semester (year-long)</b>
<b>Prerequisite</b>	<b>AP Physics I</b>
<b>Class Fee</b>	<b>AP Exam Fee \$94</b>
<p>AP Physics is an Advanced Placement course to be taken for 2 semesters. This course is an overview of the fundamental principles that govern the universe; topics covered include magnetism, thermodynamics, photoelectric effect, light, and renewable nuclear physics. An investigative approach is emphasized to improve skills such as observation, problem solving, critical thinking, and data analysis. A working knowledge of algebraic manipulations of variables and basic trigonometry is required.</p>	

DE/AP College Biology    CMC BIO 111 & 112	
<b>Recommended Grade</b>	<b>11, 12</b>
<b>Credit</b>	<b>.5 per semester HS / 5 per semester CMC</b>
<b>Prerequisite</b>	<b>Completion of high school biology and high school chemistry. SAT Verbal 440; ACT-Reading 17; Accuplacer Reading 246+.</b>
<b>Class Fee</b>	<b>AP Exam Fee \$94</b>



This is a Colorado Mountain College course that examines the fundamental molecular, cellular and generic principles characterizing plants and animals. It includes cell structure and function and basic concepts of heredity. The second half includes ecology, evolution, classification, structure and function in plants and animals. The course includes extensive laboratory experience. This is a 2 semester class. Successful performance (C or better) on two semesters will earn 5 college credits. Successful performance (C or better)

63

for three semesters will earn a total of 10 college credits. *The AP Biology exam is **required** to be taken at the end of the year.*

### AP Environmental Science

<b>Recommended Grade</b>	<b>11, 12</b>
<b>Credit</b>	<b>.5 per semester</b>
<b>Prerequisite</b>	<b>Passing course grade in Biology and Algebra 1</b>
<b>Class Fee</b>	<b>AP Exam Fee \$94</b>

The AP Environmental Science course is designed to engage students with the scientific principles, concepts, and methodologies required to understand the interrelationships within the natural world. The course requires that students identify and analyze natural and human-made environmental problems, evaluate the relative risks associated with these problems, and examine alternative solutions for resolving or preventing them. Environmental science is interdisciplinary, embracing topics from geology, biology, environmental studies, environmental science, chemistry, and geography. *The AP Environmental Science exam is **required** to be taken at the completion of both semesters.*

### DE Botany || CMC BIO221

<b>Recommended Grade</b>	<b>11, 12</b>
<b>Credit</b>	<b>.5 per semester HS and/ 5/semester CMC credit</b>
<b>Prerequisite</b>	<b>Fall semester of DE/AP Biology</b>
<b>Class Fee</b>	<b>None</b>

This is a one-semester Colorado Mountain College course that allows students to further study the diversity, anatomy, physiology and evolution of plant life. Students will explore plants in the classroom, field, lab and greenhouse. Emphasis is placed on the native plants of Colorado. In order to enroll, students must have completed or be concurrently enrolled in DE College Biology. Most weeks students are expected to attend a half hour practicum outside of class time (with multiple time slots) where botanical knowledge is applied to labs and greenhouse. *Students wishing to take this class should not sign up for General Botany. Successful performance (C or better) for the one semester of the course will earn a total*

of 5 college credits.

## SOCIAL STUDIES

*The Social Studies Department uses an inclusionary, project approach to its courses. We feel this approach accommodates all learning styles. It allows for student ownership of their learning, and it develops practical life skills. We work with the English department by incorporating the six-trait writing guide to help students become effective writers. The CO State Standards for History are addressed through the curriculum developed at the district level.*

### World Geography

<b>Recommended Grade</b>	<b>9</b>
<b>Credit</b>	<b>.5 per semester (one semester)</b>
<b>Prerequisite</b>	<b>None</b>
<b>Class Fee</b>	<b>None</b>

World Geography will cover the physical, cultural and social geography of the World. Students will acquire map skills, key vocabulary, place / name identification, and will work effectively with tables, charts, graphs, and diagrams. During each unit students will work on projects usually in groups and we will discuss and develop an understanding of current issues. This is a semester long class.

### AP Human Geography

<b>Recommended Grade</b>	<b>9</b>
<b>Credit</b>	<b>.5 per semester (year-long)</b>
<b>Prerequisite</b>	<b>None</b>
<b>Class Fee</b>	<b>\$94 Exam Fee</b>

This course is a demanding 2 semester class that teaches the five college-level goals from the National Geographic Standards: place, region, movement, human interaction and culture. This course requires one hour of reading homework per night, for the entire year. The course focuses on analytical thinking, writing and reading skills that will prepare students for success in college and the AP exam. *AP exam required.*

### World History (1000 A.D. – 1860)

<b>Recommended Grade</b>	<b>10</b>
--------------------------	-----------

<b>Credit</b>	<b>.5 per semester (year-long)</b>
<b>Prerequisite</b>	<b>None</b>
<b>Class Fee</b>	<b>None</b>
<p>This course provides an in-depth study of history stressing concepts of change, identity, interdependence and citizenship. The focus is on the political, economic and social development of Western Europe and the Americas. Higher education requirements for Colorado colleges mandate at least one year of either US History or World History included in the required 3.0 social studies credit.</p>	

<b>Sheltered World History/Sheltered Human Geography</b>	
<b>Recommended Grade</b>	<b>9, 10, 11, 12</b>
<b>Credit</b>	<b>.5 per semester (World History is year-long, Human Geography is 1 semester)</b>
<b>Prerequisite</b>	<b>None</b>
<b>Class Fee</b>	<b>None</b>

65

World History and Human Geography will be offered in a sheltered environment on a rotating basis.
---

<b>AP World History</b>	
<b>Recommended Grade</b>	<b>10, 11, 12</b>
<b>Credit</b>	<b>.5 per semester (year-long)</b>
<b>Prerequisite</b>	<b>None</b>
<b>Class Fee</b>	<b>\$94 Exam Fee</b>
<p>This course is a demanding 2 semester course that teaches a more in-depth history of the second millennium. The course focuses on analytical thinking, writing and reading skills that will prepare students for success in college and the AP exam. <i>All students will be required to take the national AP exam.</i></p>	

<b>U.S. History</b>	
<b>Recommended Grade</b>	<b>11</b>
<b>Credit</b>	<b>.5 per semester (year-long)</b>
<b>Prerequisite</b>	<b>World History</b>

<b>Class Fee</b>	<b>None</b>
<p>This course traces the development of modern America and its role in the world. Content begins with the American Civil war, continuing through contemporary times. Historical events are analyzed along political, social and economic lines, with emphasis on causal relationships and modern implications. Higher education requirements for Colorado colleges mandate at least one year of either US History or World History included in the required 3.0 social studies credit.</p>	

<b>AP U.S. History</b>	
<b>Recommended Grade</b>	<b>11, 12</b>
<b>Credit</b>	<b>.5 per HS semester</b>
<b>Prerequisite</b>	<b>Teacher recommendation</b>
<b>Class Fee</b>	<b>\$94 AP Exam Fee</b>
<p>This is a college level course that covers a number of events, peoples, groups, cultures, ideas and institutions in North America and United States history. The courses focus on analytical thinking, writing and reading skills that will prepare students for success in college. These courses assume a high level of interest and competence. Because this course is similar to a first year college course, students should expect that the workload will be heavier than most regular high school history courses. The analytical thinking, writing and reading skills that students develop will equip them for college and lifelong learning.</p>	

<b>Economics</b>	
<b>Recommended Grade</b>	<b>11, 12</b>
<b>Credit</b>	<b>.5 (one semester)</b>
<b>Prerequisite</b>	<b>None</b>
<b>Class Fee</b>	<b>None</b>
<p>Economics courses provide students with an overview of economics with primary emphasis on the principles of microeconomics and the U.S. economic system. These courses may also cover topics such as principles of macroeconomics, international economics, and comparative economics. Economic principles</p>	

may be presented in formal theoretical contexts, applied contexts, or both. This course is required for graduation starting with the Class of 2021.

Sheltered Economics	
<b>Recommended Grade</b>	<b>11, 12</b>
<b>Credit</b>	<b>.5 (one semester)</b>
<b>Prerequisite</b>	<b>None</b>
<b>Class Fee</b>	<b>None</b>
Economics will be offered in a sheltered language environment for recommended students.	

U.S. Government	
<b>Recommended Grade</b>	<b>11, 12</b>
<b>Credit</b>	<b>.5 (one semester)</b>
<b>Prerequisite</b>	<b>At least 2.0 credits of Social Studies</b>
<b>Class Fee</b>	<b>None</b>
This course examines in detail our democratic system with its separation of power among judicial, legislative and executive branches of government. 0.5 credit of US Government or AP American Government is required for BMHS graduation.	

Sheltered U.S. Government	
<b>Recommended Grade</b>	<b>11, 12</b>
<b>Credit</b>	<b>.5 (one semester)</b>
<b>Prerequisite</b>	<b>At least 2.0 credits of Social Studies</b>
<b>Class Fee</b>	<b>None</b>
U.S. Government will be offered in a sheltered language environment for recommended students.	

AP American Government & Politics	
<b>Recommended Grade</b>	<b>11, 12</b>
<b>Credit</b>	<b>.5 per semester (year-long)</b>
<b>Prerequisite</b>	<b>Teacher OR Counselor recommendation</b>
<b>Class Fee</b>	<b>\$94 AP Exam Fee</b>

College level instruction will include the foundation of the U.S. Constitution, the philosophy of American government, general principles of the U.S. Constitution, federalism, civil liberties, public opinion, citizen participation, political parties, interest groups, the electoral process and the structure and function of the national government. Students enrolling in this class will *be required to take the AP exam in May*. After the AP exam, the class will focus on state and local government, until the end of the year. This is a two semester class. This covers the 0.5 requirement for Government required for graduation.

### DE General Psychology I || CMC PSY101

<b>Recommended Grade</b>	<b>11, 12</b>
<b>Credit</b>	<b>.5 HS credit/ 3 CMC credit</b>
<b>Prerequisite</b>	<b>SAT verbal 470, ACT-reading 17, OR Accuplacer reading 246+</b>
<b>Class Fee</b>	<b>None</b>
This class may receive Dual/Concurrent Enrollment from BMHS and CMC with the successful completion at a "C" level. Focuses on the scientific study of behavior including motivation, emotion, physiological	

67

psychology, stress and coping, research methods, consciousness, sensation, perception, learning, and memory. This is a statewide guaranteed transfer course in the GT-SS3 category. \*DE Psychology courses will rotate two sections per year.

### DE General Psychology II || CMC PSY102

<b>Recommended Grade</b>	<b>11, 12</b>
<b>Credit</b>	<b>.5 HS credit/ 3 CMC credit</b>
<b>Prerequisite</b>	<b>SAT verbal 470, ACT-reading 17, OR Accuplacer reading 246+</b>
<b>Class Fee</b>	<b>None</b>
This class may receive Dual/Concurrent Enrollment from BMHS and CMC with the successful completion at a "C" level. Focuses on the scientific study of behavior including cognition, language, intelligence, psychological assessment, personality, abnormal psychology, therapy, life span development, and social psychology. This is a statewide guaranteed transfer course in the GT-SS3 category. *DE Psychology courses will rotate two sections per year.	

### DE Positive Psychology || CMC PSY231

<b>Recommended Grade</b>	<b>11, 12</b>
--------------------------	---------------

<b>Credit</b>	<b>.5 HS credit/ 3 CMC credit</b>
<b>Prerequisite</b>	<b>SAT verbal 470, ACT-reading 17, OR Accuplacer reading 246+</b>
<b>Class Fee</b>	<b>None</b>

This class may receive Dual/Concurrent Enrollment from BMHS and CMC with the successful completion at a "C" level. Focuses on human strengths rather than the traditional view of psychology that tends to focus on the worst of human nature. This course is designed to explore strengths-based research, concepts of happiness, helpfulness, and resiliency. The research and theories about human nature will go beyond simply not being mentally ill as a form of mental health, which will include optimism, post-traumatic growth, and how to increase emotional, psychological and social functioning. Overall, this course will be focuses on understanding one's own sense of life satisfaction and how to further improve well-being. \*DE Psychology courses will rotate two sections per year.

#### **DE Human Development || CMC PSY235**

<b>Recommended Grade</b>	<b>11, 12</b>
<b>Credit</b>	<b>.5 HS credit/ 3 CMC credit</b>
<b>Prerequisite</b>	<b>SAT verbal 470, ACT-reading 17, OR Accuplacer reading 246+</b>
<b>Class Fee</b>	<b>None</b>

This class may receive Dual/Concurrent Enrollment from BMHS and CMC with the successful completion at a "C" level. Examines human development from conception through death emphasizing physical, cognitive, emotional, and psychosocial factors. \*DE Psychology courses will rotate two sections per year.

#### **DE Abnormal Psychology || CMC PSY249**

<b>Recommended Grade</b>	<b>11, 12</b>
<b>Credit</b>	<b>.5 HS credit/ 3 CMC credit</b>
<b>Prerequisite</b>	<b>SAT verbal 470, ACT-reading 17, OR Accuplacer reading 246+</b>
<b>Class Fee</b>	<b>None</b>

This class may receive Dual/Concurrent Enrollment from BMHS and CMC with the successful completion at a "C" level. Examines abnormal behavior and its classification, causes, treatment, and prevention. \*DE Psychology courses will rotate two sections per year.

# EXCEPTIONAL STUDENT SERVICES

*The mission of the Exceptional Student Services (ESS) Department is to actively represent and assist all students with disabilities. We work to attain the goals of each individual student through high expectations, respecting all learners and aiding students in fulfilling their aspirations.*

Academic Lab	
Recommended Grade	9, 10, 11, 12
Credit	.5 per semester
Prerequisite	Teacher Approval
Class Fee	None
<p>The main objective for this course is to develop students' academic aptitude, executive functioning, and self-determination skills for success in high school and student's postsecondary goals. Course topics include the Colorado Essential Skills and may vary according to the students' needs and individual educational plan goals. Students will learn to self-advocate, organize, and manage their time through direct instruction. This course will also provide students with the assistance they need to successfully complete their coursework and will include a college and career exploration and transition-planning component.</p>	

Life Skills	
Recommended Grade	9, 10
Credit	.5 per semester
Prerequisite	Teacher Approval
Class Fee	None
<p>This course is designed to increase the student's knowledge and skills needed to be successful during their post high school life. Areas that will be addressed are: following directions, conflict resolution, meal planning and preparation, nutrition and healthy choices, how to locate resources, organization and time management, personal safety, phone etiquette and emergency procedures, personal presentation, and personal relationships. In addition, this class time will also serve as a resource/study hall as needed.</p>	



Math Other	
<b>Recommended Grade</b>	<b>9, 10, 11, 12</b>
<b>Credit</b>	<b>.5 per semester</b>
<b>Prerequisite</b>	<b>Teacher Approval</b>
<b>Class Fee</b>	<b>None</b>
<p>This course will reinforce and expand students' foundational math skills, as well as, review and extend algebra/geometry concepts and standards presented in the student's core math class. Course topics include the Colorado Essential Skills and may vary according to the students' needs and individual educational plan goals. Students will learn to self-advocate, organize, and manage their time through direct instruction. This course will also provide students with the assistance they need to successfully complete their coursework and will include a college and career exploration and transition-planning component.</p>	

Foundation Math	
<b>Recommended Grade</b>	<b>9, 10, 11, 12</b>
<b>Credit</b>	<b>.5 per semester</b>
<b>Prerequisite</b>	<b>Teacher Approval</b>
<b>Class Fee</b>	<b>None</b>
<p>This course is designed to increase student's understanding, knowledge and skills of basic math concepts. Areas covered include: basic geometry, multiplication, fractions, addition/subtraction, graphing, sequencing, patterns, measurement, and money (identification, value, change, and percentages).</p>	

Corrective Reading	
<b>Recommended Grade</b>	<b>9, 10</b>
<b>Credit</b>	<b>.5 per semester</b>
<b>Prerequisite</b>	<b>Open to students who test at a 5.0-6.5 IRI level or an equivalent standardized test score (STAR360)</b>
<b>Class Fee</b>	<b>None</b>

The comprehensive reading intervention program offers targeted students, direct quality reading instruction that focuses on developing a strong foundation in decoding and active reading strategies. Students will learn specific strategies in structured analysis, comprehension, vocabulary, and fluency and will practice listening, writing, and oral communication skills. Course topics include the Colorado Essential Skills and may vary according to the students' needs and individual educational plan goals. Students will learn to self-advocate, organize, and manage their time through direct instruction. This course will also provide students with the assistance they need to successfully complete their coursework and will include a college and career exploration and transition-planning component.

## ADDITIONAL ELECTIVES

AVID	
<b>Recommended Grade</b>	<b>9, 10, 11, 12</b>
<b>Credit</b>	<b>.5 per semester (year-long)</b>
<b>Prerequisite</b>	<b>Desire to pursue postsecondary education and/or career path, <a href="#">Application</a></b>
<b>Class Fee</b>	<b>None</b>
<p>The central goal of the AVID program (Advancement Via Individual Determination) is to prepare students in the academic middle who have high potential for success in postsecondary education and future careers. AVID students are expected to maintain GPA and attendance requirements, model good citizenship everywhere they go, and become active members of BMHS and the broader community.</p> <p>This 4-year program helps prepare students for advanced placement courses in high school and future college-level coursework. This class focuses the standards of Student Agency (Building Relationships, Persisting Through Obstacles, and Activating Knowledge and Skills), Rigorous Academic Preparedness (Writing, Inquiry, Collaboration, Organization, and Reading), and Opportunity Knowledge (Advancing College Preparedness, Building Career Preparedness, and Developing Future Readiness).</p> <p>The program was designed for students to commit to all 4 years of AVID in high school. However, all motivated and qualifying students are encouraged to apply throughout their high school experience. Applications do not guarantee acceptance. Please reference the <a href="#">AVID page</a> in the course guide for more information.</p>	

Miscellaneous Aide (TA)	
<b>Recommended Grade</b>	<b>11, 12</b>
<b>Credit</b>	<b>.5 per semester</b>

<b>Prerequisite</b>	<b>Students must have 2.5+ GPA, no failing grades previous semester, no behavior/attendance contracts</b>
<b>Class Fee</b>	<b>None</b>
<p>This opportunity is for students who wish to assist in a specific area of the school. Teachers use aides to take inventories, deliver messages, set up teaching/learning stations, etc. Miscellaneous Aides assist in general office procedures such as recording attendance, operating copy machines, taking messages, answering questions and carrying on routine filing and record keeping. <u>Students must be willing to accept any teacher assigned by the counseling department.</u></p>	

<b>Bilingual Teacher's Assistant</b>	
<b>Recommended Grade</b>	<b>11, 12</b>
<b>Credit</b>	<b>.5 per semester</b>
<b>Prerequisite</b>	<b>Students must have 2.5+ GPA, no failing grades previous semester, no behavior/attendance contracts, in 11<sup>th</sup> or 12<sup>th</sup> grade</b>
<b>Class Fee</b>	<b>None</b>
<p>Students involved in the BIAS program at BMHS must be academically proficient in both English and Spanish and working toward their Seal of Biliteracy. After having gone through professional orientation and training with the program director, students are expected to provide support interpreting and translating for both our new monolingual students in sheltered classes and our bridging students who have moved into mainstream classes.</p>	

<b>Tutorial</b>	
<b>Recommended Grade</b>	<b>9, 10, 11, 12</b>
<b>Credit</b>	<b>.5 per semester</b>
<b>Prerequisite</b>	<b>Teacher or counselor recommendation</b>
<b>Class Fee</b>	<b>None</b>
<p>Tutorial courses provide students with the assistance they need to successfully complete their coursework. Students may receive help in English AND Math. <i>This course will count towards elective credit.</i></p>	

<b>Yearbook</b>	
<b>Recommended Grade</b>	<b>11, 12</b>
<b>Credit</b>	<b>.5 per semester (recommended year-long)</b>

<b>Prerequisite</b>	<b>None</b>
<b>Class Fee</b>	<b>None</b>
<p>Yearbook is a unique course in which students learn, grow, and engage in areas of photography, editing, design, and journalism, particularly journalistic writing and interviewing skill sets. Students who take Yearbook will be responsible for creating, designing, and publishing the Battle Mountain annual yearbook. <b>This course requires some outside of class commitments including: sporting events, pep rallies, homecoming parades, and other events as related to Battle Mountain.</b></p>	

## ADDITIONAL CMC OFFERINGS

CMC Nurse Aide Certificate	
<b>Recommended Grade</b>	<b>11, 12</b>
<b>Credit</b>	<b>.5 per semester</b>
<b>Prerequisite</b>	<b>Must be 17 years old, co-requisite of clinical experience</b>
<b>Class Fee</b>	<b>None</b>
<p>Prepares the student to perform the fundamental skills of the nurse aide. Basic nursing skills, communication skills, restorative services, personal care skills, safety, and emergency care issues are covered. Includes knowledge and/or principles of asepsis, OSHA and HIPAA regulations. Ethical behaviors, cultural sensitivity, and principles of mental health will be addressed, as well as patient/resident rights.</p>	

Introduction to Education in Spanish    EDU-2211-VE01	
<b>Recommended Grade</b>	<b>11, 12</b>
<b>Credit</b>	<b>.5 per semester (3 CMC credits)</b>
<b>Prerequisite</b>	<b>CMC Spanish Placement test of 550 or higher OR B- or higher in DE Spanish 2012 (formerly Spanish 212) (see additional details below) <i>and</i> two electronic references from teachers</b>
<b>Class Fee</b>	<b>None</b>
<p>This course will be taught in <b>Spanish</b>. Multilingual Learners in Spanish explores racial, ethnic, cultural, and socioeconomic groups to gain an understanding of equity, diversity, and inclusion in communities and education. This course provides opportunities to contextualize multicultural perspectives in society and their impact on the education system.</p>	

The majority of course materials will be in Spanish. However, some resources will be in English to assist in the transferring and processing of Cognitive-Academic Language Proficiency via translanguaging.

This course requires 20 field hours. Students experience instruction through in-person scheduled class meetings. Students are expected to be physically present at a designated CMC campus or location at specified dates and times. In addition, this course uses CMC's learning management system to share syllabus and other course materials. This course is part of the Colorado Mountain College Learning Materials Program (LMP), an integrated program designed to deliver student textbooks directly to you at the beginning of the semester. Books must be returned at the conclusion of the semester or if a class is dropped unless you choose to purchase this book.

**Course Requisites:**

Students must take a Colorado Mountain College Spanish Placement test and earn a score of 550 or higher. Students who have already taken DE Spanish 2012 (formerly named 212) with a passing grade of B- or better can automatically register without taking the placement test. High school students must have two electronic references from their teachers which can be done in less than five minutes.

Students who score between 440-549 on the Spanish Placement test may register to take Introduction to Education in Spanish provided that they also register to take the co-requisite course Spanish 2012 at CMC in the evenings. In this scenario, the student would be enrolled in both the EDU 2211 course as well as an evening Spanish 2012 course.

**Multilingual Learners in Spanish || EDU-2341-VE01**

<b>Recommended Grade</b>	<b>11, 12</b>
<b>Credit</b>	<b>.5 per semester (3 CMC credits)</b>
<b>Prerequisite</b>	<b>CMC Spanish Placement test of 550 or higher OR B- or higher in DE Spanish 2012 (formerly Spanish 212) (see additional details below) <i>and</i> two electronic references from teachers</b>
<b>Class Fee</b>	<b>None</b>

This course will be taught in **Spanish**. Multilingual Learners in Spanish explores racial, ethnic, cultural, and socioeconomic groups to gain an understanding of equity, diversity, and inclusion in communities and education. This course provides opportunities to contextualize multicultural perspectives in society and their impact on the education system.

The majority of course materials will be in Spanish. However, some resources will be in English to assist in the transferring and processing of Cognitive-Academic Language Proficiency via translanguaging.

This course requires 20 field hours. Students experience instruction through in-person scheduled class meetings. Students are expected to be physically present at a designated CMC campus or location at specified dates and times. In addition, this course uses CMC's learning management system to share syllabus

and other course materials. This course is part of the Colorado Mountain College Learning Materials Program (LMP), an integrated program designed to deliver student textbooks directly to you at the beginning of the semester. Books must be returned at the conclusion of the semester or if a class is dropped unless you choose to purchase this book.

**Course Requisites:**

Students must take a Colorado Mountain College Spanish Placement test and earn a score of 550 or higher. Students who have already taken DE Spanish 2012 (formerly named 212) with a passing grade of B- or better can automatically register without taking the placement test. High school students must have two electronic references from their teachers which can be done in less than five minutes.

Students who score between 440-549 on the Spanish Placement test may register to take Introduction to Education in Spanish provided that they also register to take the co-requisite course Spanish 2012 at CMC in the evenings. In this scenario, the student would be enrolled in both the EDU 2341 course as well as an evening Spanish 2012 course.