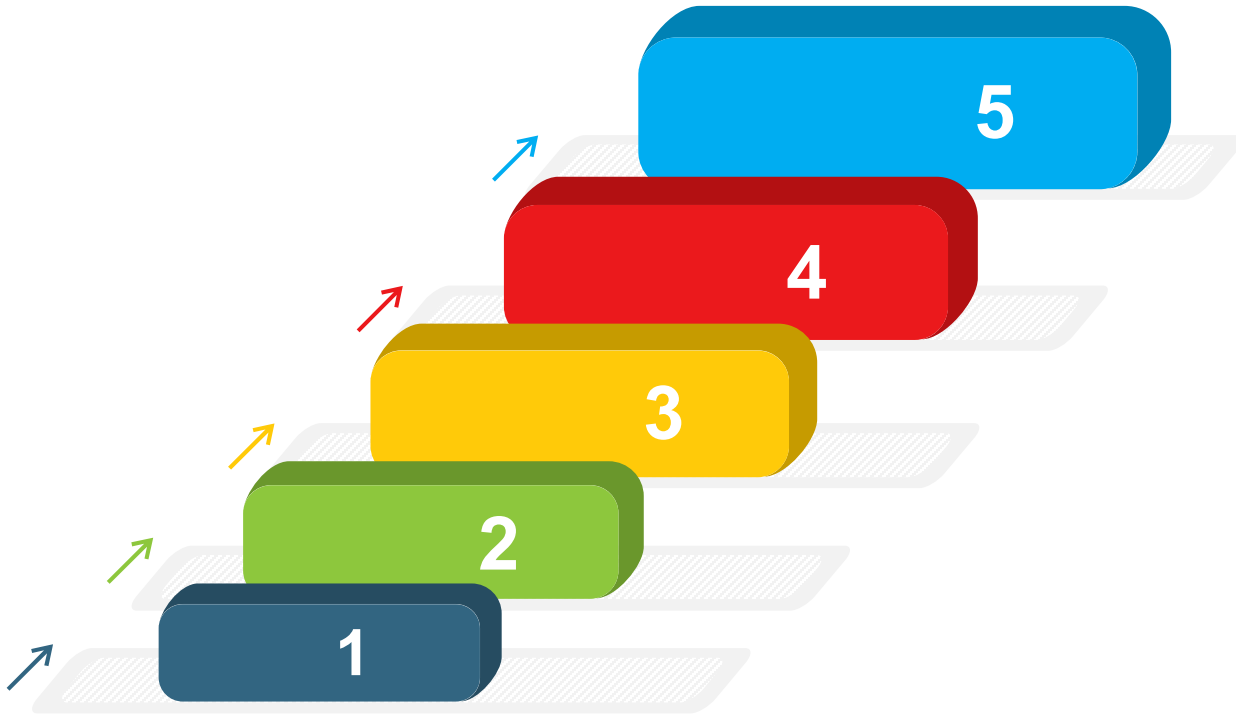


State Assessments 2019

NJSLA Performance Levels



- Exceeded (varies according to test)
- Met (varies according to test)
- Scored 725-749
Approached
- Scored 700-724
Partially Met
- Scored 650-699
Did Not Yet Meet



Bergenfield School District Participation Rate



English Language Arts

99.7% of the eligible students participated districtwide

Franklin	99%
Hoover	99.2%
Jefferson	100%
Lincoln	100%
Washington	98.8%
Roy W. Brown	99.9%
Bergenfield High School	100%

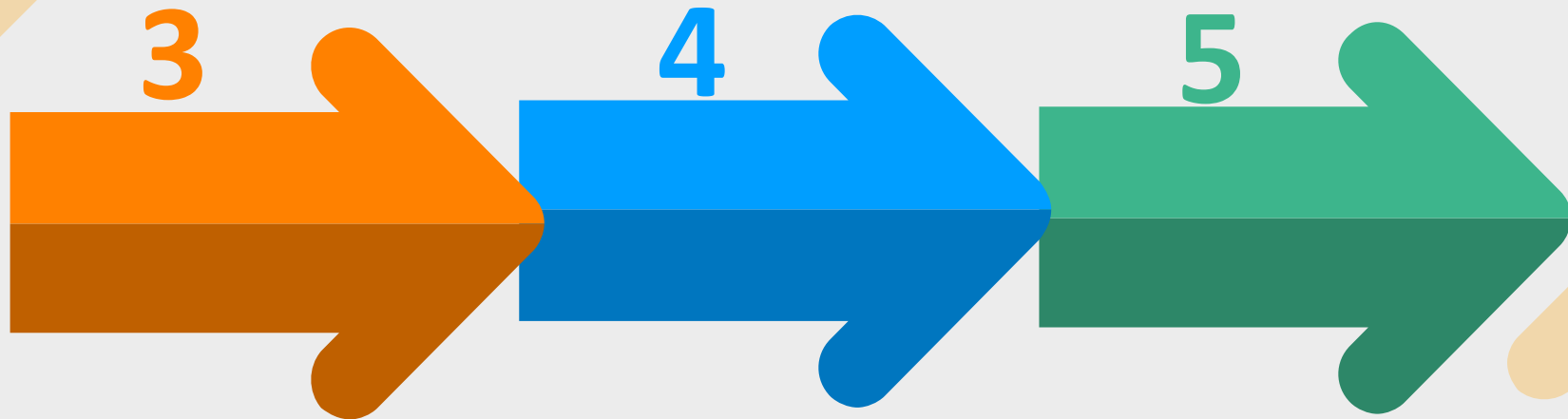
Mathematics

99.7% of the eligible students participated districtwide

Franklin	99%
Hoover	100%
Jefferson	100%
Lincoln	100%
Washington	98.8%
Roy W. Brown	99.9%
Bergenfield High School	99.6%

2019 NJSLA ELA/Elementary

District's Scores by Grade



2019 NJSLA/ELA

3rd Grade Performance in %

Performance	# of Students	Mean Score	Not yet Meeting 1	Partially Meeting 2	Approaching 3	Meeting 4	Exceeding	% >= Level 4
State	95,830	748	14	14.4	21.4	42.8	7.4	50.3
District	268	760	6.3	8.2	20.5	55.6	9.3	64.9
Franklin Elementary	60	767	6.7	6.7	15	55	16.7	71.7
Hoover Elementary	35	742	8.6	14.3	34.3	42.9	0	42.9
Jefferson Elementary	52	759	1.9	11.5	26.9	55.8	3.8	59.6
Lincoln Elementary	69	765	4.3	4.3	15.9	65.2	10.1	75.4
Washington Elementary	52	759	11.5	7.7	17.3	51.9	11.5	63.5

2019 NJSLA/ELA

4th Grade Performance in %

Performance	# of Students	Mean Score	Not yet Meeting 1	Partially Meeting 2	Approaching 3	Meeting 4	Exceeding 5	% >= Level 4
State	98,985	755	8.6	12.6	21.4	39.1	18.3	57.5
District	269	764	5.9	6.3	18.2	46.5	23	69.5
Franklin Elementary	72	764	2.8	2.8	26.4	47.2	20.8	68.1
Hoover Elementary	41	749	14.6	14.6	17.1	41.5	12.2	53.7
Jefferson Elementary	53	776	1.9	1.9	9.4	52.8	34	86.8
Lincoln Elementary	41	773	4.9	2.4	22	39	31.7	70.7
Washington Elementary	62	758	8.1	11.3	14.5	48.4	17.7	66.1

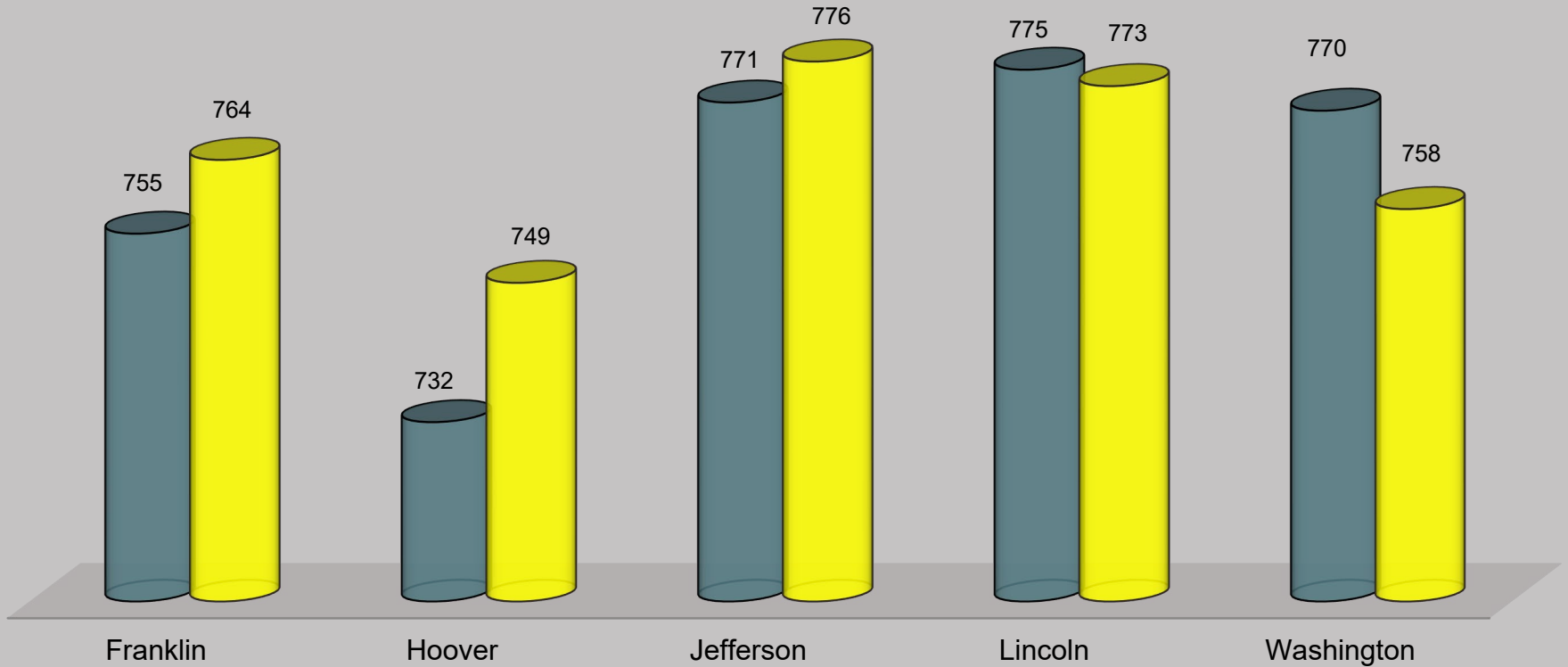
2019 NJSLA/ELA

5th Grade Performance in %

Performance	# of Students	Mean Score	Not yet Meeting 1	Partially Meeting 2	Approaching 3	Meeting 4	Exceeding 5	% >= Level 4
State	100,316	756	7.4	12.5	22.2	45.6	12.3	57.9
District	245	771	2.4	7.3	15.5	52.7	22	74.7
Franklin Elementary	57	773	0	7	15.8	61.4	15.8	77.2
Hoover Elementary	46	758	4.3	6.5	39.1	37	13	50
Jefferson Elementary	43	775	4.7	4.7	2.3	60.5	27.9	88.4
Lincoln Elementary	48	777	4.2	4.2	10.4	50	31.3	81.3
Washington Elementary	51	772	0	13.7	9.8	52.9	23.5	76.5

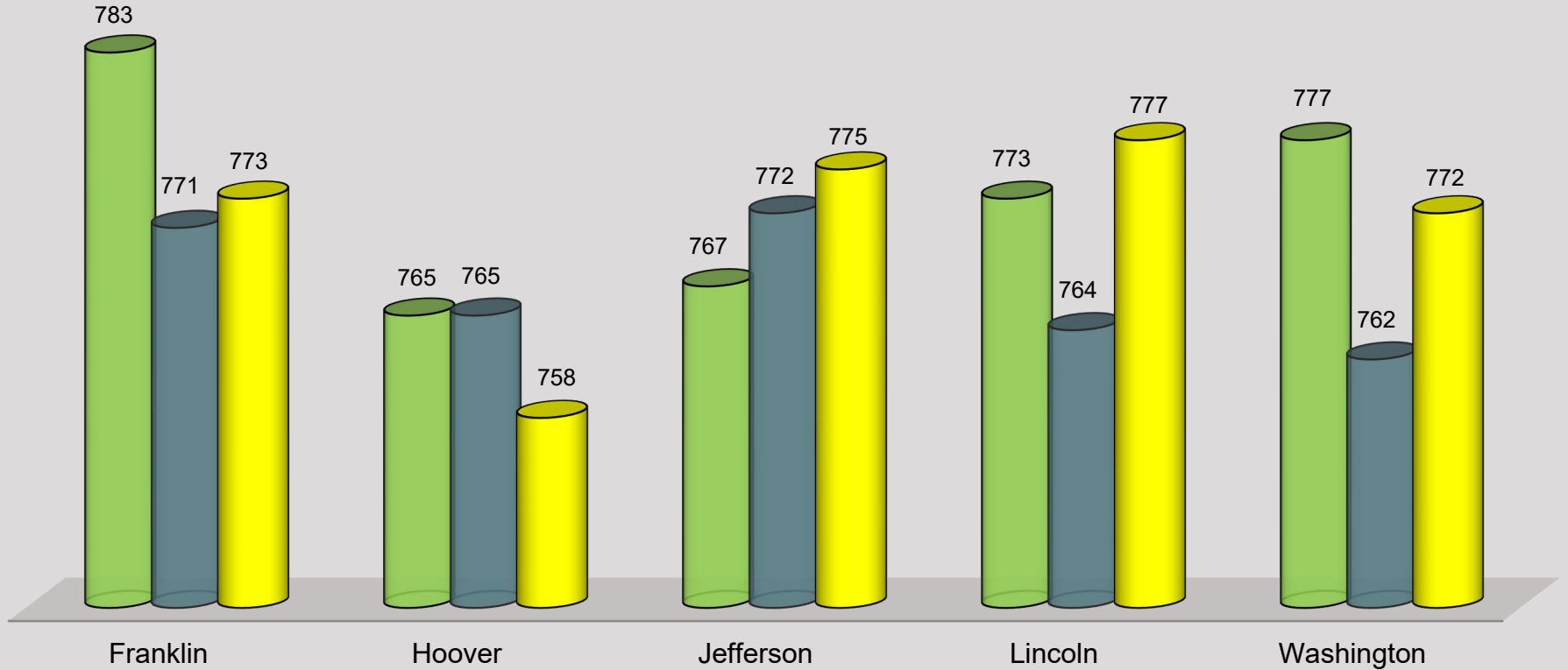
NJSLA/ELA Cohort Performance by School Current 5th Graders or Class of 2027

■ 2018 3rd Grade ■ 2019 4th Grade



NJSLA/ELA Cohort Performance by School Current 6th Graders or Class of 2026

2017 (3rd) 2018 (4th) 2019 (5th)



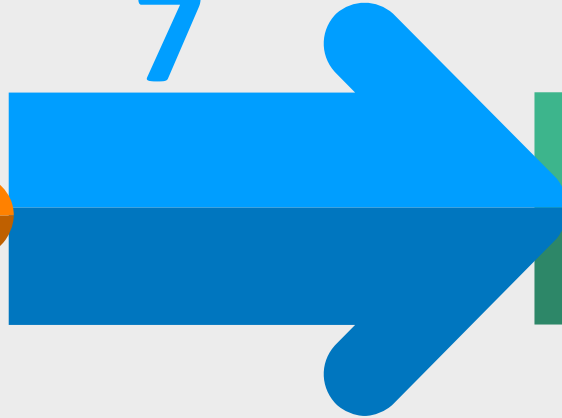
2019 NJSLA ELA/RWB

District Scores by Grade

6



7



8



2019 NJSLA/ELA

RWB Performance in %

Performance	# of Students	Mean Score	Not yet Meeting 1	Partially Meeting 2	Approaching 3	Meeting 4	Exceeding 5	% >= Level 4
State (6)	102,052	754	7.3	12.6	23.9	40.9	15.2	56.2
District (6)	269	757	7.1	11.9	20.1	43.5	17.5	61
State (7)	100,347	761	8.9	10.5	17.8	33.1	29.7	62.8
District (7)	282	762	6.7	8.2	20.2	39	25.9	64.9
State (8)	99,118	762	9.2	10.3	17.7	38	24.9	62.8
District (8)	265	773	5.3	5.7	15.1	42.6	31.3	74

2019 NJSLA ELA/BHS

District Scores by Grade

9

10

11



2019 NJSLA/ELA

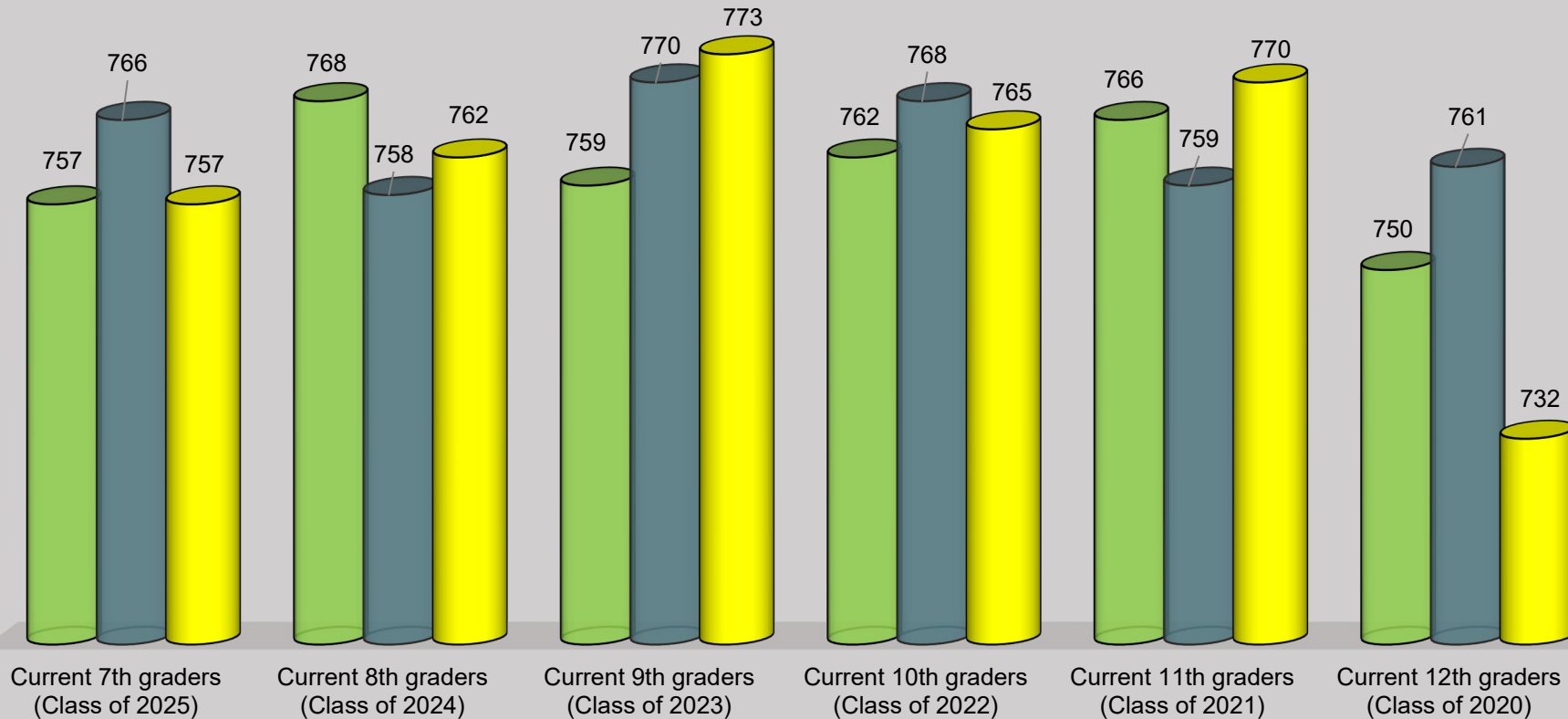
BHS Performance in %

Performance	# of Students	Mean Score	Not yet Meeting 1	Partially Meeting 2	Approaching 3	Meeting 4	Exceeding 5	% >= Level 4
State (9)	98,327	753	11.7	11.9	21	36.3	19	55.3
District (9)	315	765	8.9	8.6	11.7	39.7	31.1	70.8
State (10)	96,240	757	15	11.1	15.9	33	25	58
District (10)	276	770	11.2	8.7	14.9	30.4	34.8	65.2
State (11)	13,097	728	24.9	20.6	24.7	24.2	5.7	29.9
District (11)	40	732	15	20	37.5	25	2.5	27.5

NJSLA/ELA Cohort Performance

Class of 2020 to Class of 2025

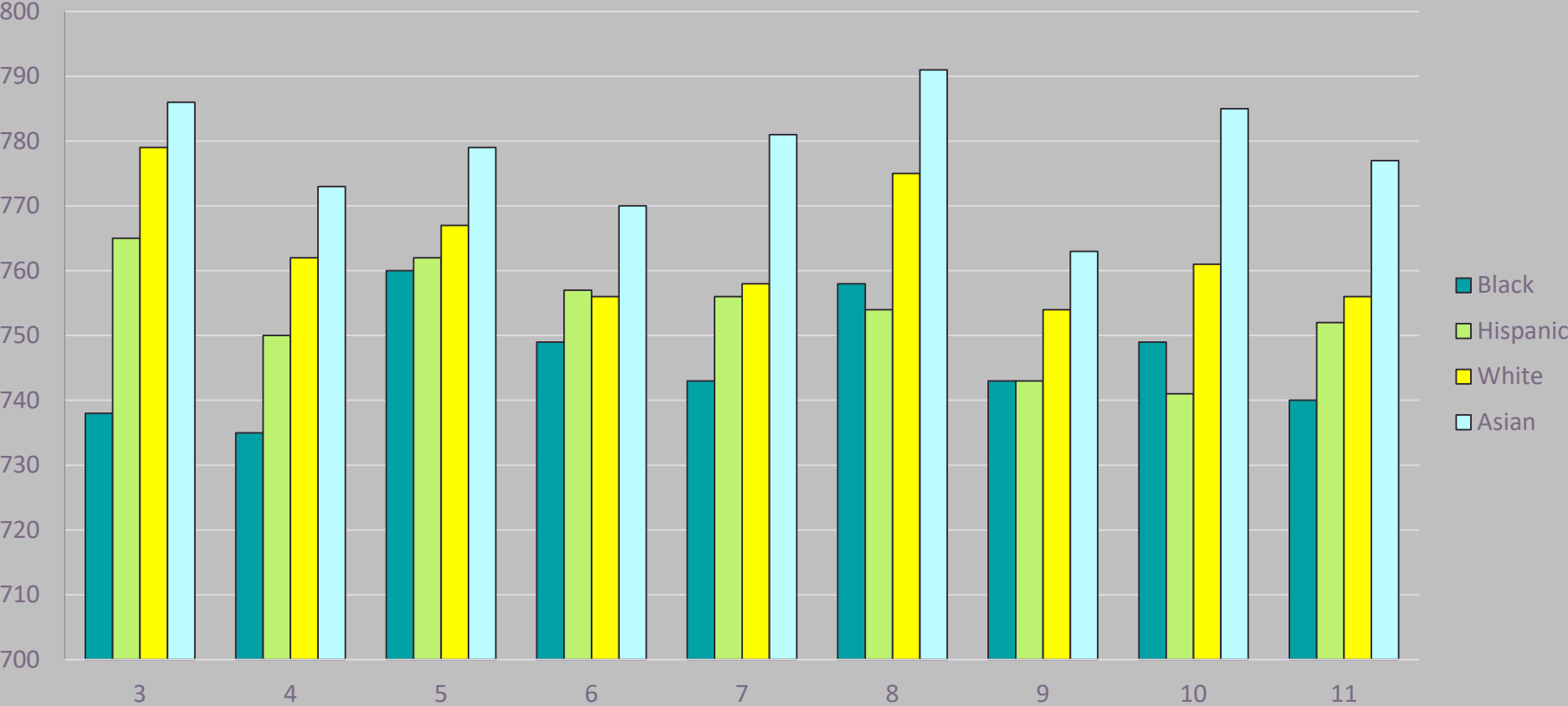
2017 2018 2019



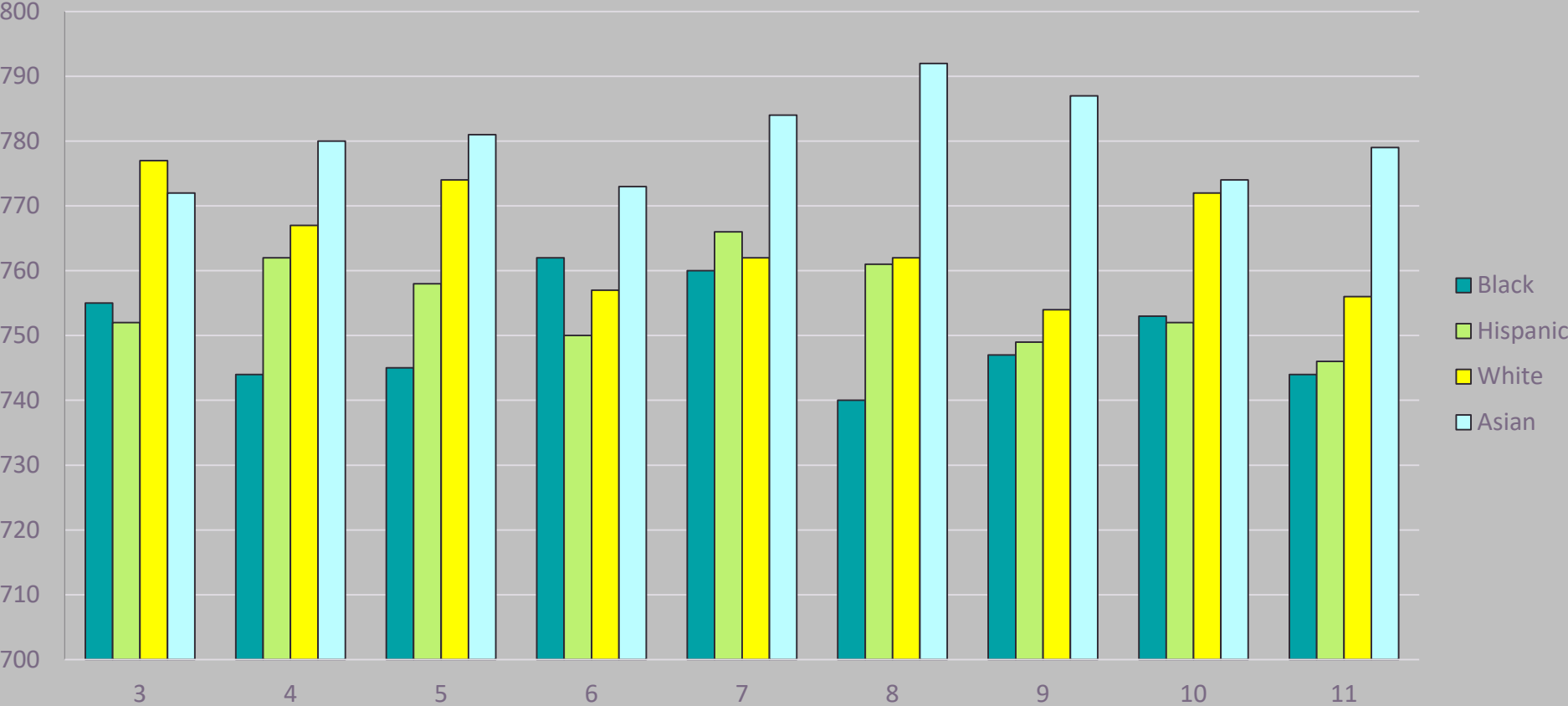


***Sub-Groups
Performance***

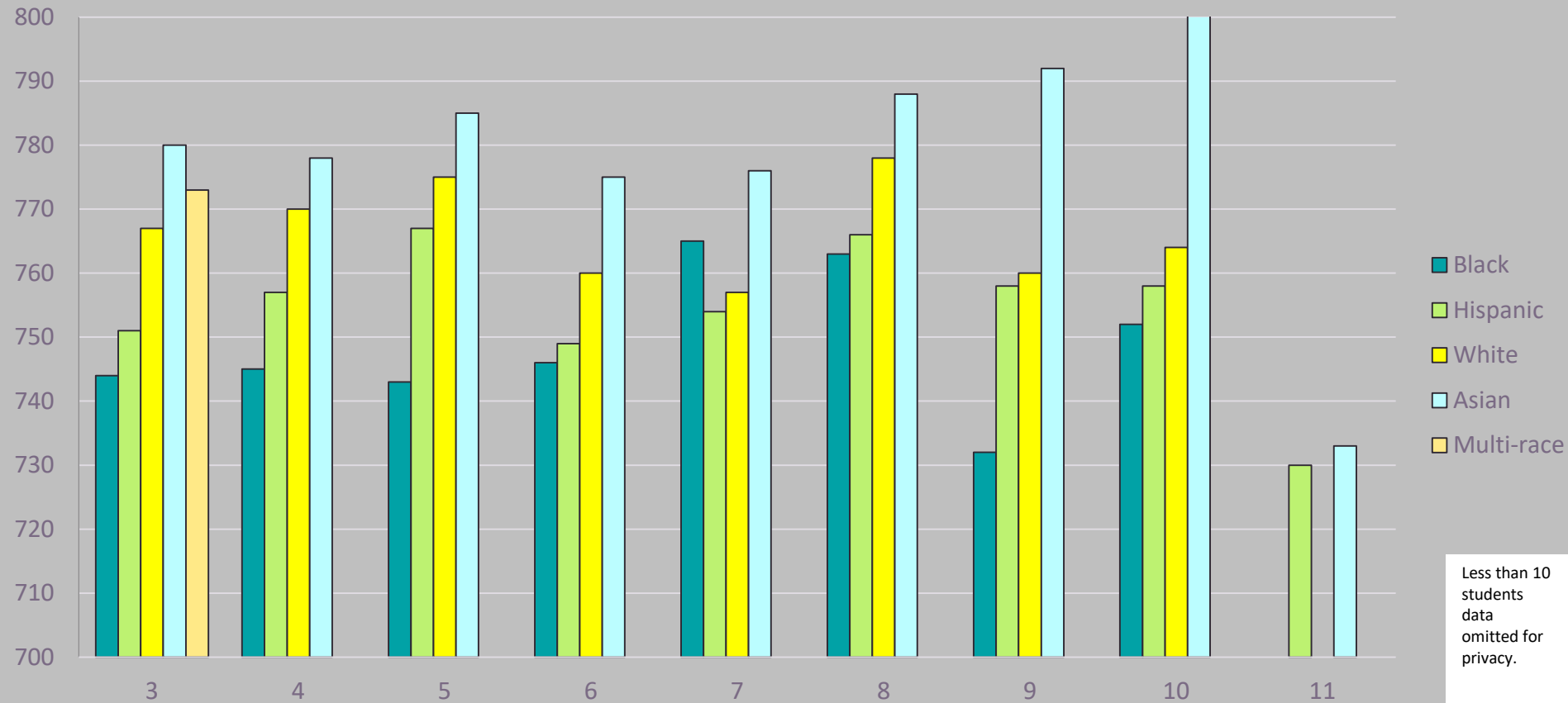
2017 Demographics Comparison - ELA



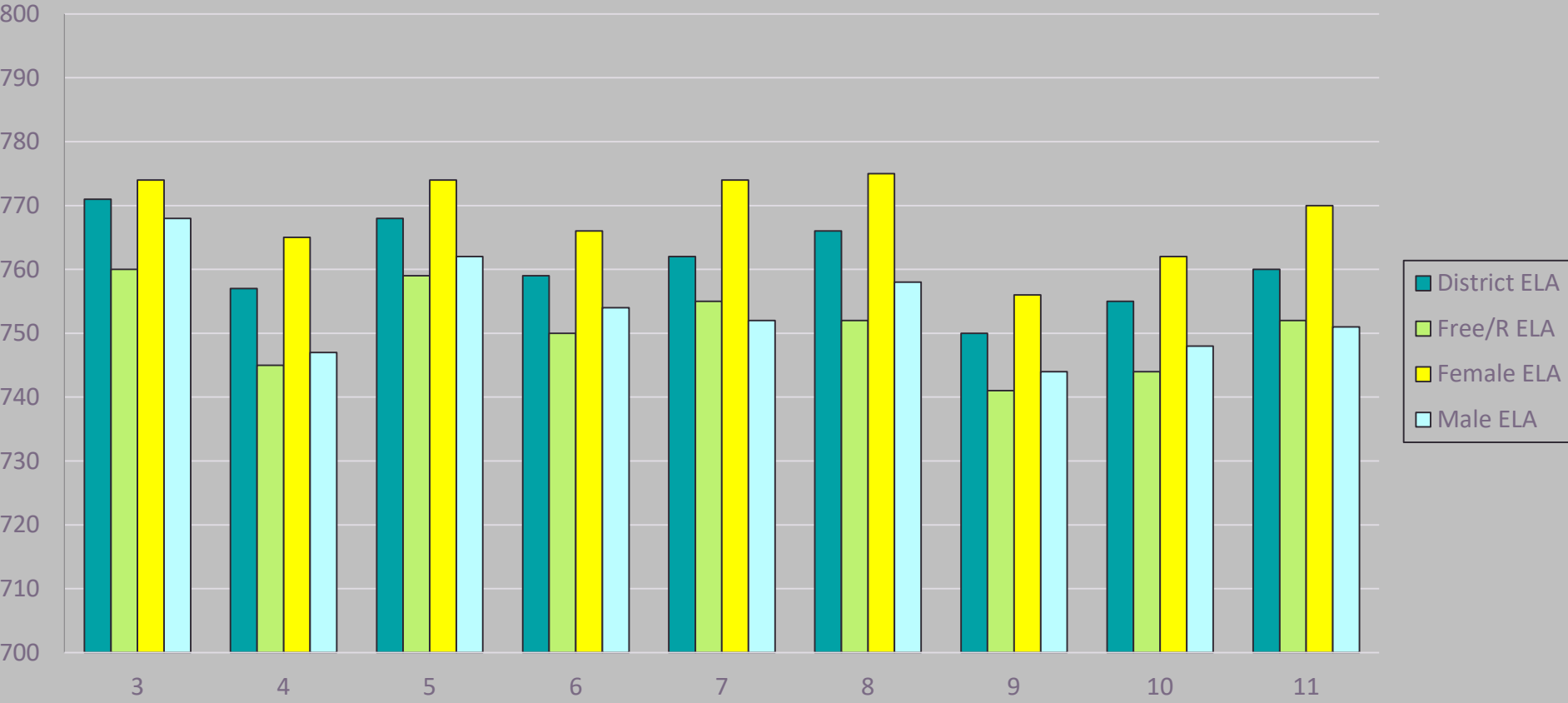
2018 Demographics Comparison - ELA



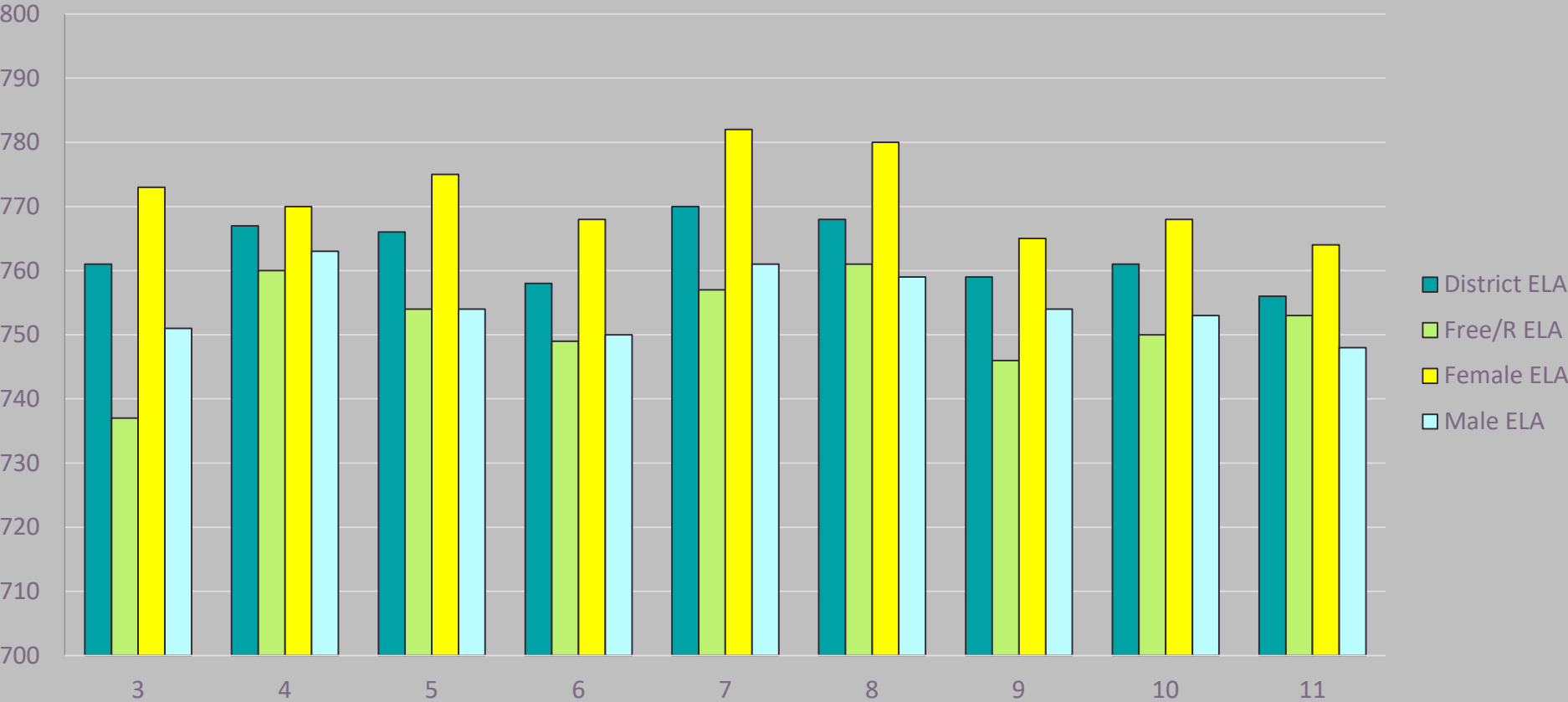
2019 Demographics Comparison - ELA



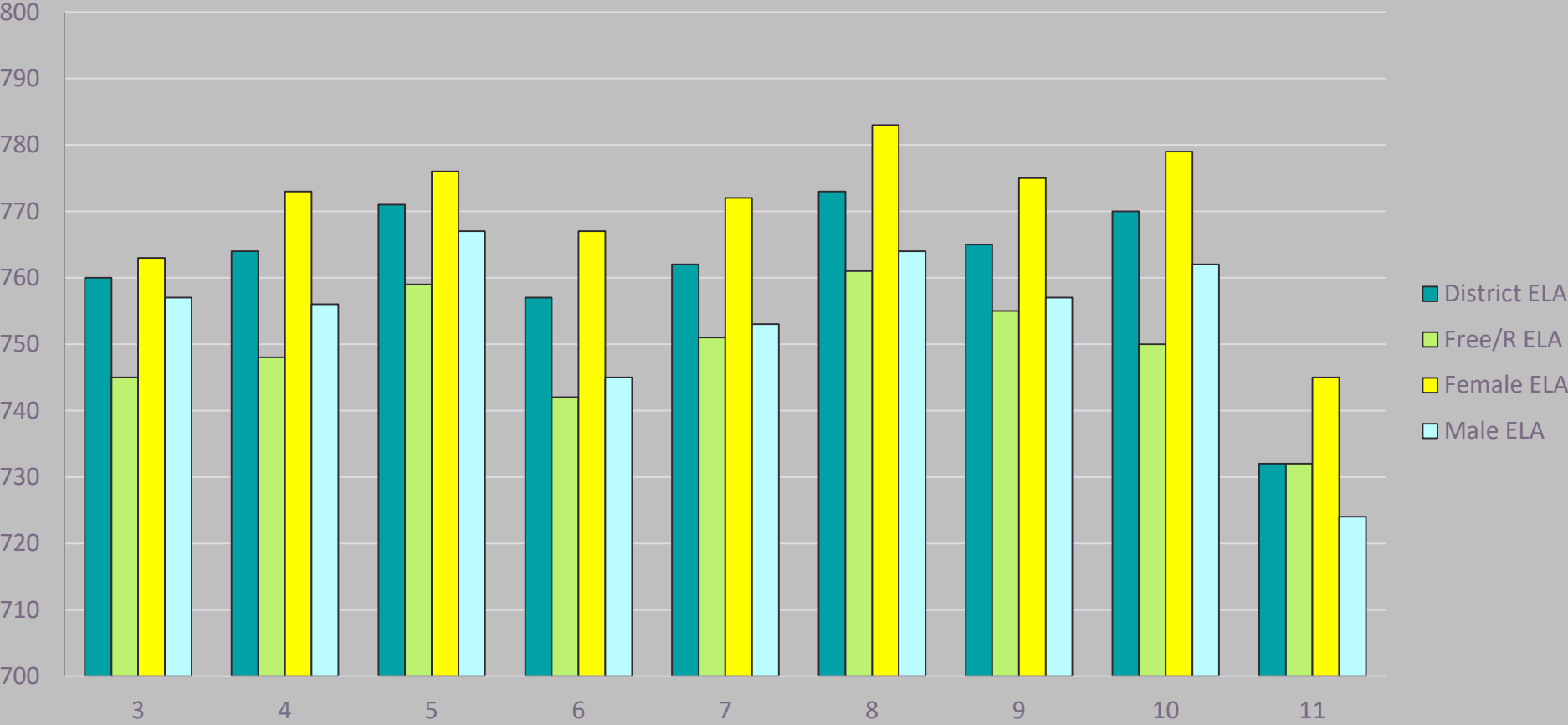
2017 NJSLA/ SES and Gender Comparison - ELA



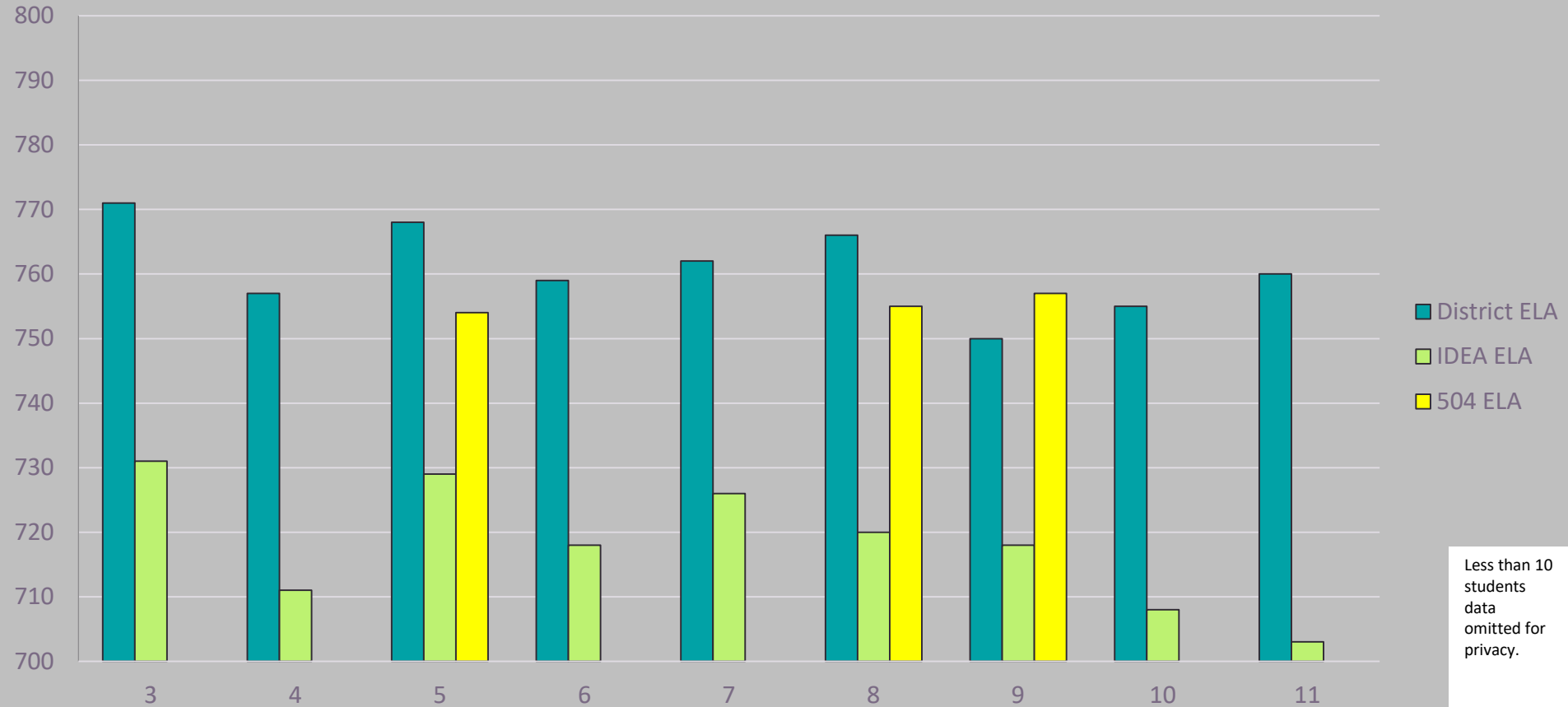
2018 NJSLA/ SES and Gender Comparison -ELA



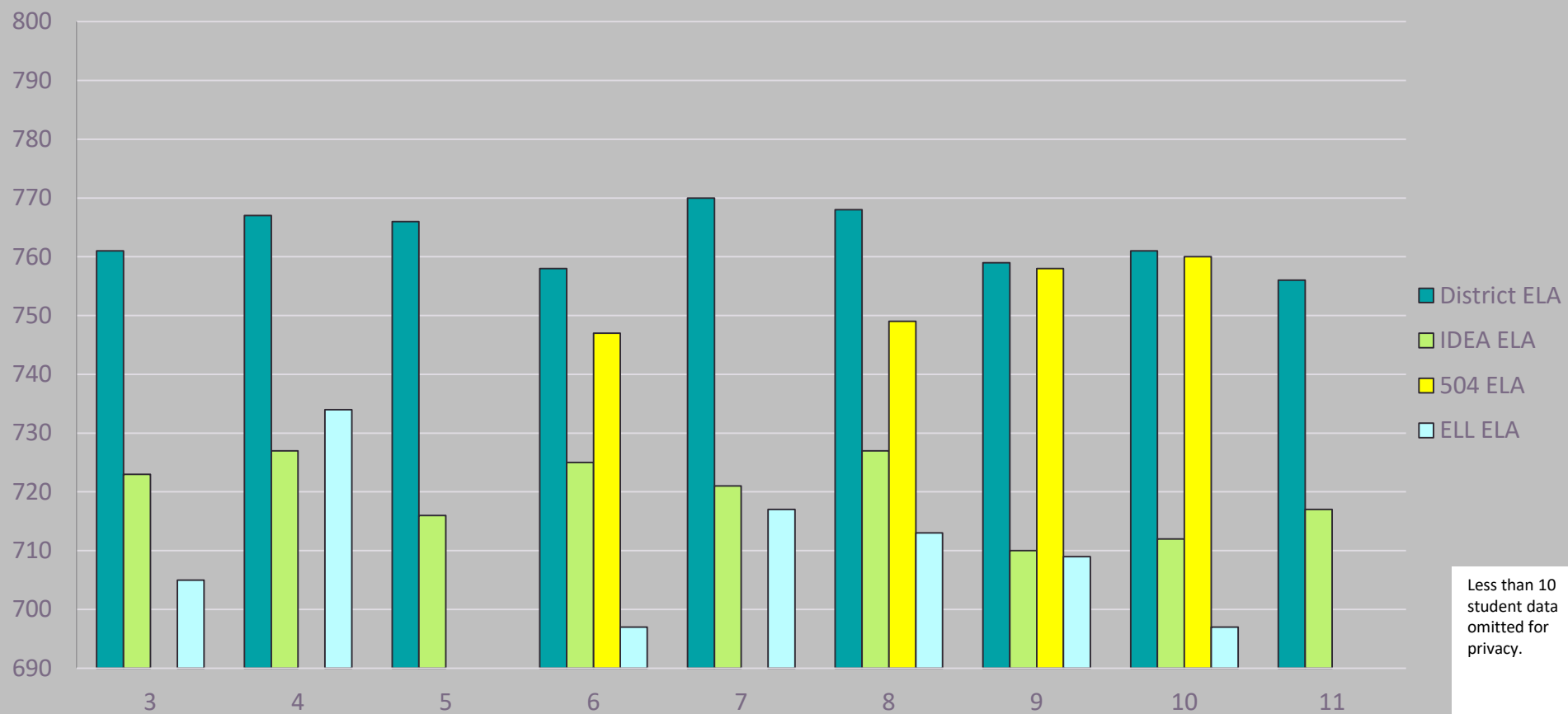
2019 NJSLA/ SES and Gender Comparison- ELA



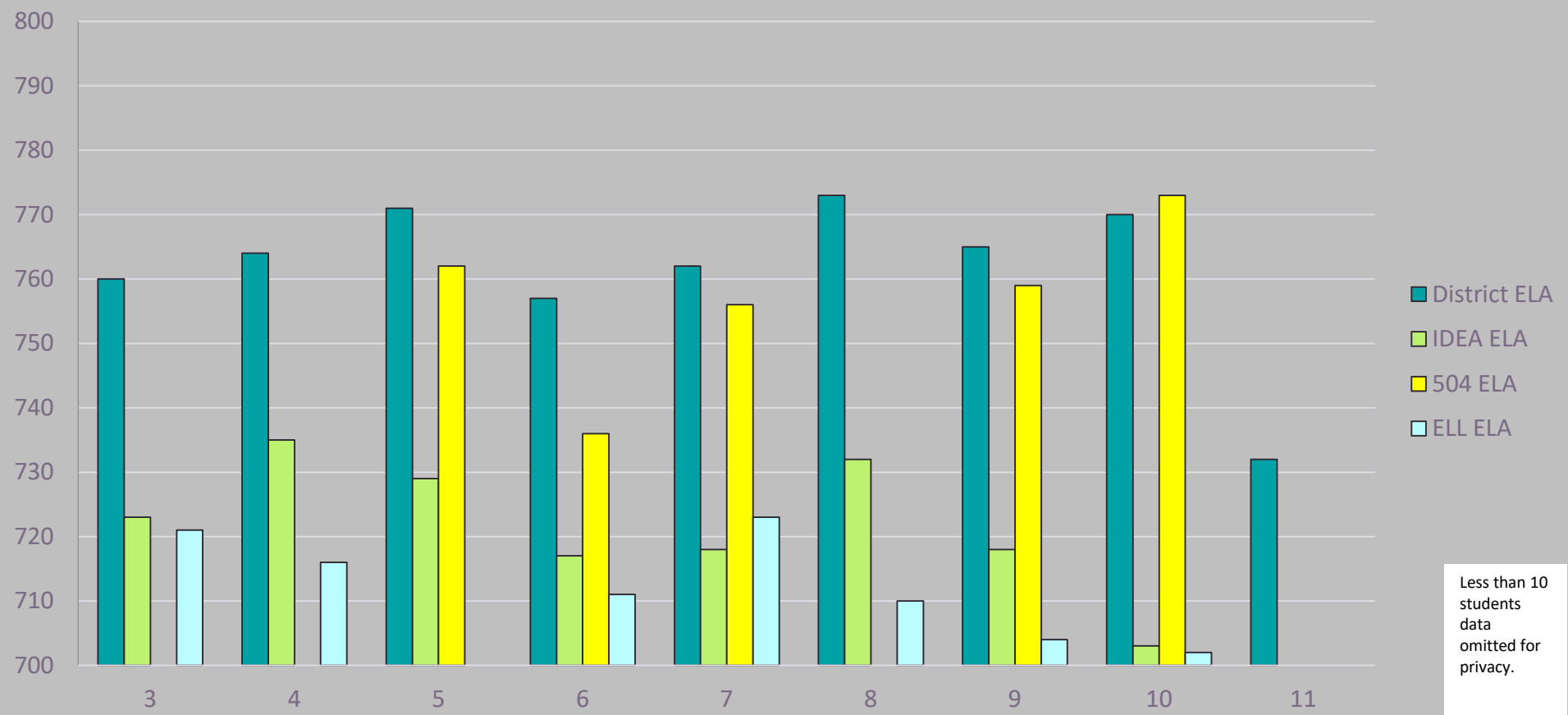
2017 NJSLA/ELA IDEA-Performance Comparison



2018 NJSLA IDEA/ELL-Performance Comparison - ELA



2019 NJSLA IDEA/ELL-Performance Comparison - ELA



ELA Assessment Summary



The Analysis:

- In grades 3 - 11, the district had a higher average score as well as a higher percentage of students meeting/exceeding expectation as compared to the state cohort.
- In grades 3 – 10 the district average for each grade level was above the 750 target for meeting expectation.
- The subgroups of ELLs, Special Education, and economically disadvantaged students, on average, scored below the district mean score.
- In general, the average score for females was higher than that for males; the average score for White and Asian students was consistently higher than other ethnicities represented.
- 11th grade # participants dropped significantly. Only students who had to meet a graduation requirement took the assessment.
- Data with fewer than 10 participants is not included.

The Interventions:

Programs

- Phonics First Multisensory Phonics (K-5)
- Science – Non-fiction leveled readers (K-5)
- .5 BSI for Title I Schools (K-5)
- English Lab (BHS) and English Skills (RWB)
- Diverse reading materials (P-12)

Professional Development

- Differentiated Instruction (K-12)
- Co-teaching for special populations (K-12)
- Sheltered English Instruction (K-12)

Extended Day

- Special Education Support (BHS)
- ELL Support (K-12)
- Special Education (K-12)
- Content Area ELA with Ready Reading (K-5 2xs a week)
- NJSLA ELA Prep – (K-5 February – April)

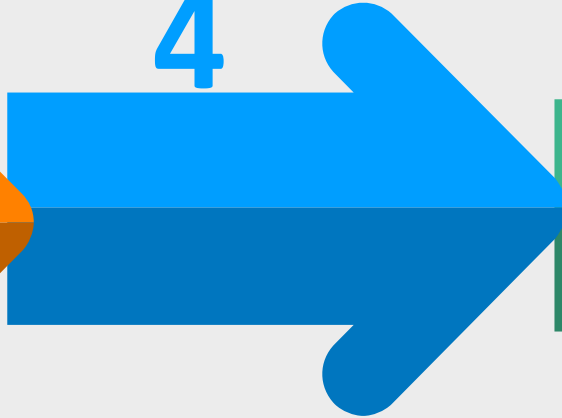
2019 NJSLA Math Elementary

District Scores by Grade

3



4



5



2019 NJSLA/Math

3rd Grade Performance in %

Performance	# of Students	Mean Score	Not yet Meeting 1	Partially Meeting 2	Approaching 3	Meeting 4	Exceeding 5	% >= Level 4
State	96,899	752	8	13.9	23	41.2	13.9	55.1
District	269	762	3.3	6.3	21.2	52	17.1	69.1
Franklin Elementary	62	770	4.8	4.8	8.1	56.5	25.8	82.3
Hoover Elementary	35	753	2.9	2.9	37.1	57.1	0	57.1
Jefferson Elementary	52	749	1.9	13.5	34.6	44.2	5.8	50
Lincoln Elementary	69	769	1.4	4.3	13	59.4	21.7	81.2
Washington Elementary	51	761	5.9	5.9	23.5	41.2	23.5	64.7

2019 NJSLA/Math

4th Grade Math Performance in %

Performance	# of Students	Mean Score	Not yet Meeting 1	Partially Meeting 2	Approaching 3	Meeting 4	Exceeding 5	% >= Level 4
State	99,967	749	8.6	14.7	25.7	43.3	7.7	51
District	274	762	5.1	4.7	20.1	57.7	12.4	70.1
Franklin Elementary	72	761	2.8	2.8	25	61.1	8.3	69.4
Hoover Elementary	42	748	9.5	11.9	26.2	45.2	7.1	52.4
Jefferson Elementary	53	772	1.9	1.9	15.1	60.4	20.8	81.1
Lincoln Elementary	43	774	4.7	2.3	16.3	60.5	16.3	76.7
Washington Elementary	64	758	7.8	6.3	17.2	57.8	10.9	68.8

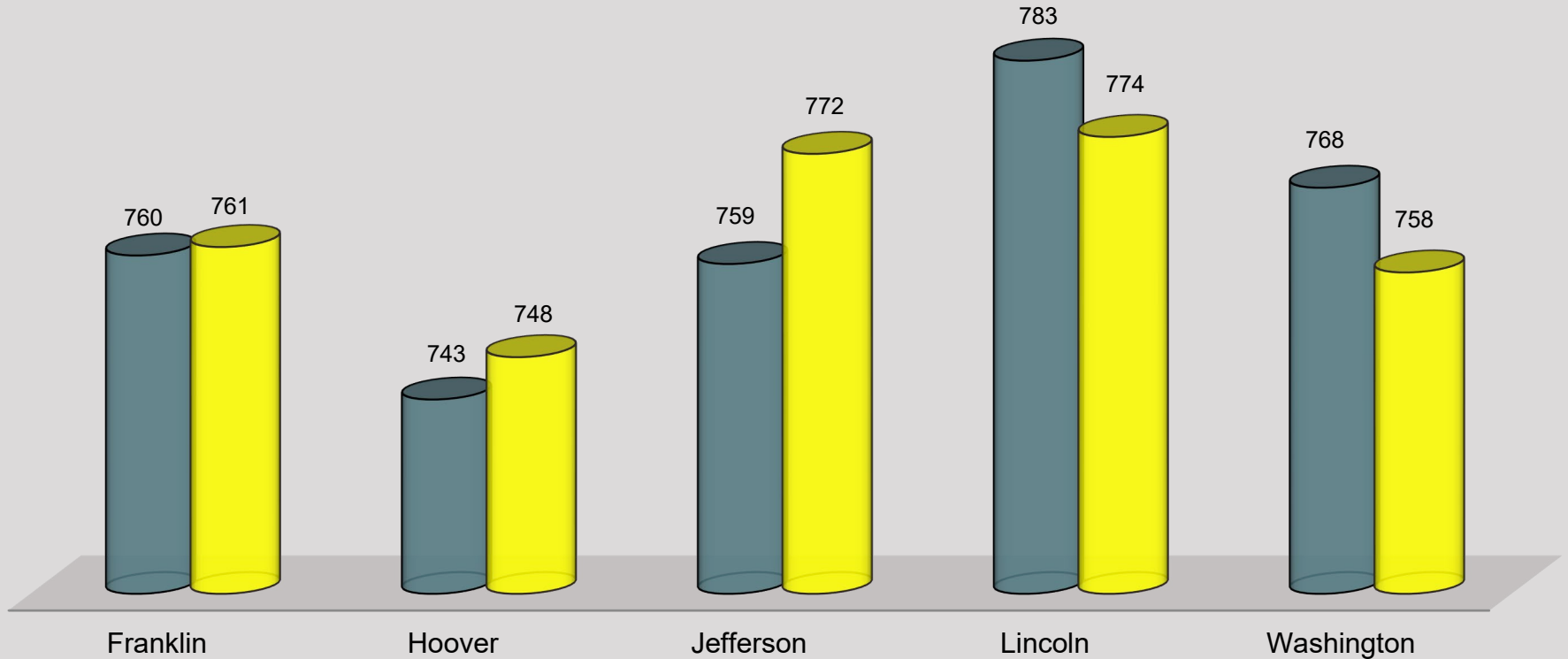
2019 NJSLA/Math

5th Grade Performance in %

Performance	# of Students	Mean Score	Not yet Meeting 1	Partially Meeting 2	Approaching 3	Meeting 4	Exceeding 5	% >= Level 4
State	101,290	747	6.4	20.9	25.8	35.8	11	46.8
District	248	757	4	8.9	24.2	49.6	13.3	62.9
Franklin Elementary	58	763	0	6.9	25.9	51.7	15.5	67.2
Hoover Elementary	47	746	6.4	19.1	29.8	42.6	2.1	44.7
Jefferson Elementary	44	759	6.8	2.3	25	47.7	18.2	65.9
Lincoln Elementary	48	759	4.2	8.3	18.8	50	18.8	68.8
Washington Elementary	51	757	3.9	7.8	21.6	54.9	11.8	66.7

Math Cohort Performance by School Current 5th Graders Class of 2027

■ 2018 3rd Grade ■ 2019 4th Grade

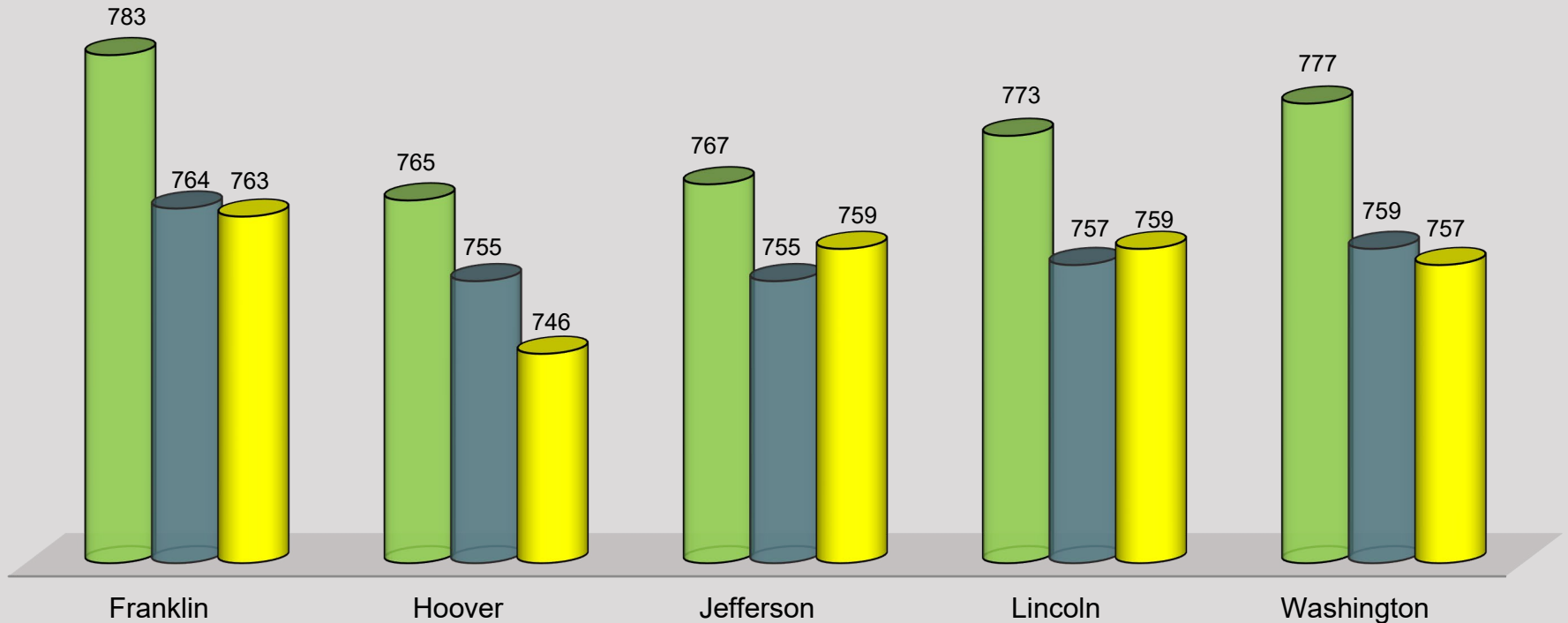


Math Cohort Performance by School

Current 6th Graders

Class of 2026

■ 2017 (3rd) ■ 2018 (4th) ■ 2019 (5th)



2019 NJSLA Math RWB

District Scores by Grade

6



7



8



2019 NLSLA/Math

RWB Math Performance in %

Performance	# of Students	Mean Score	Not yet Meeting 1	Partially Meeting 2	Approaching 3	Meeting 4	Exceeding 5	% >= Level 4
State (6)	102,926	741	9.6	22.5	27.4	33.1	7.5	40.5
RWB (6)	274	735	11.7	29.6	25.9	29.9	2.9	32.8
State (7)	96,489	743	7.6	21.1	29.3	33.8	8.3	42.1
RWB (7)	237	737	5.9	23.6	37.6	32.5	.4	32.9
State (8)	63,556	728	23.3	23.1	24.3	28.2	1.1	29.3
RWB (8)	160	724	18.1	30.6	30	20.6	.6	21.3
State (Alg)	109,328	744	9.5	26.3	21.3	37.3	5.5	42.9
RWB	112	769	0	1.8	12.5	83.9	1.8	85.7
State (Geo)	84,300	734	11.1	25.4	32.3	26.1	5.1	31.2
RWB	41	764	0	2.4	17.1	65.9	14.6	80.5

2019 NJSLA Math BHS

District Scores by Grade

Alg

Geo

Alg2

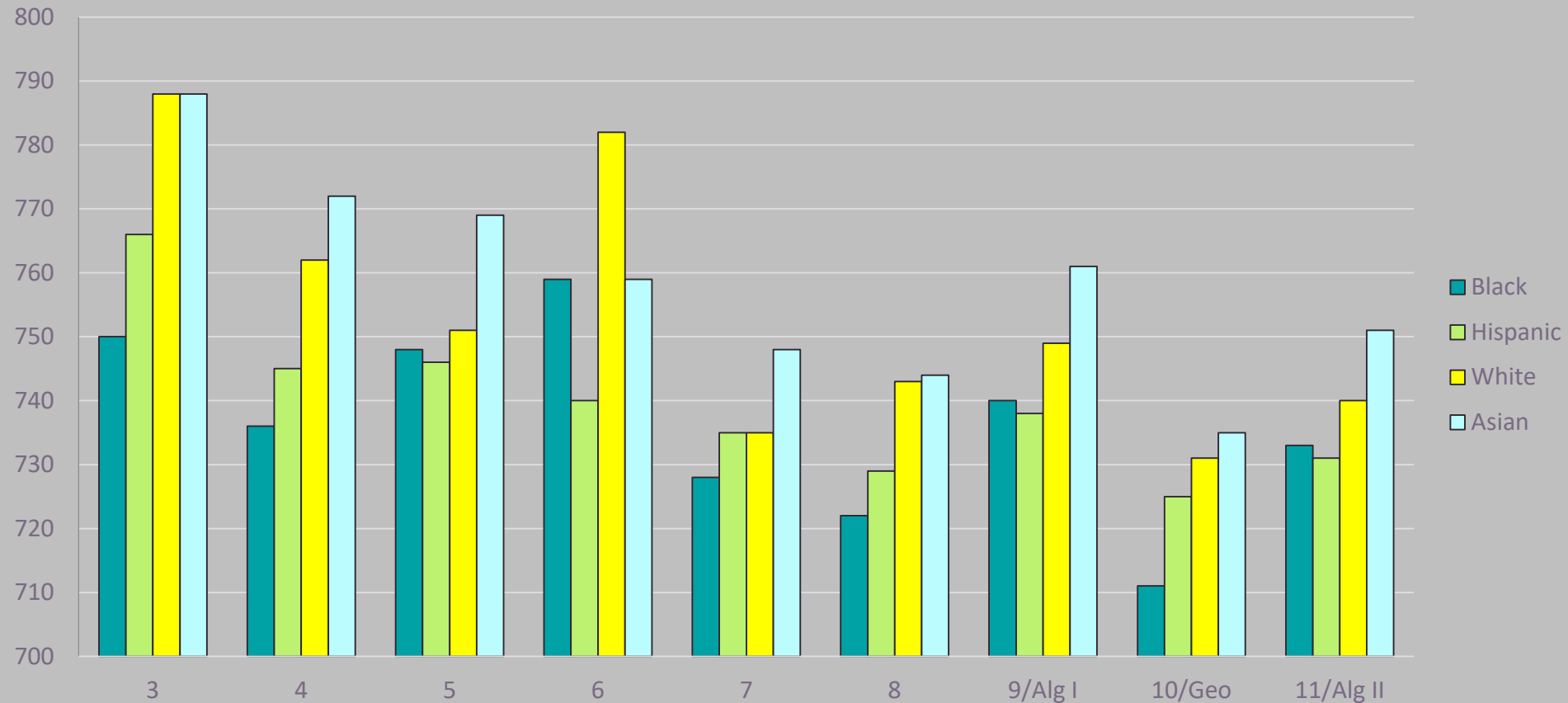


2019 NLSLA/Math

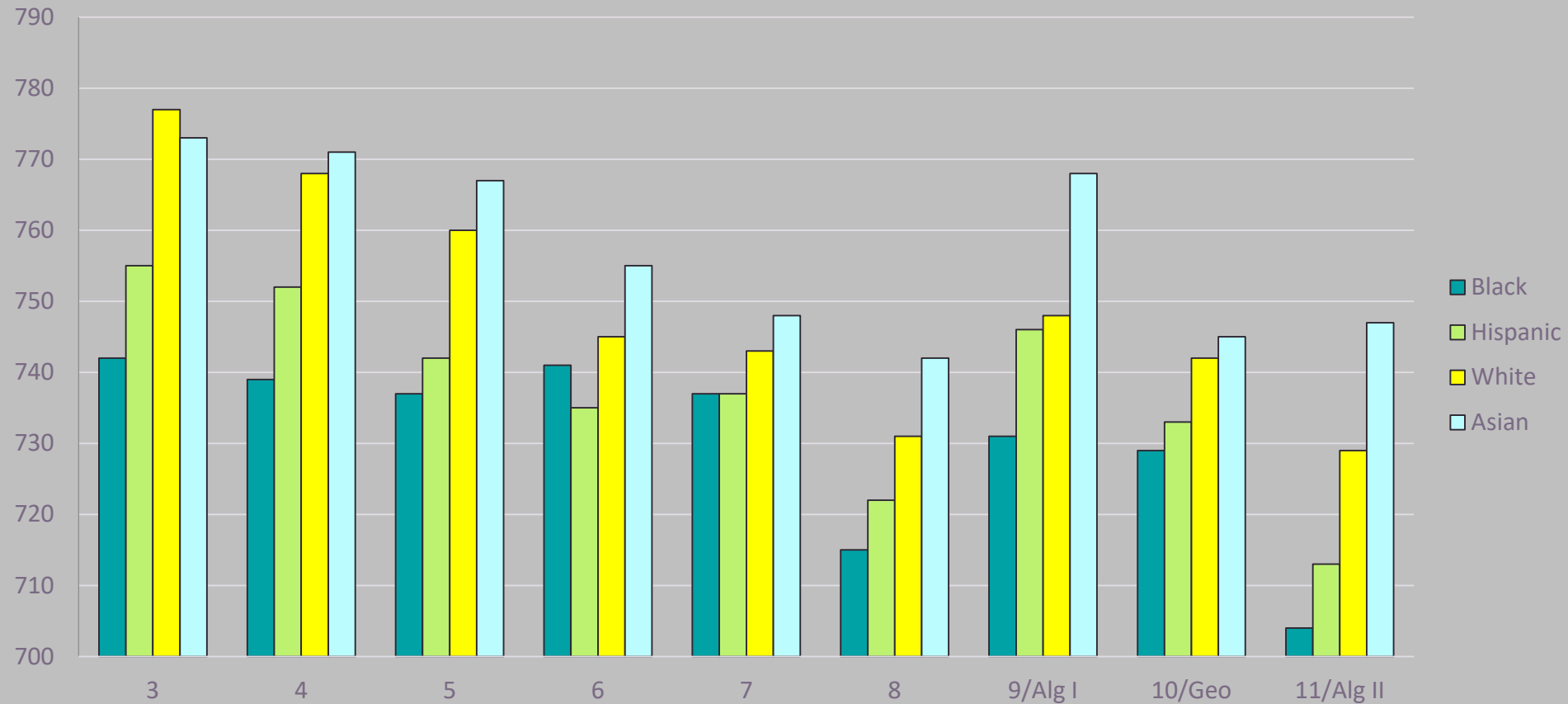
BHS Math Performance in %

Performance	# of Students	Mean Score	Not yet Meeting 1	Partially Meeting 2	Approaching 3	Meeting 4	Exceeding 5	% >= Level 4
State (Alg. I)	109,328	744	9.5	26.3	21.3	37.3	5.5	42.9
BHS (Alg. I)	199	729	10.1	35.2	33.2	21.6	0	21.6
District (Alg. I)	311	744	6.4	23.2	25.7	44.1	.6	44.7
State (Geo)	84,300	734	11.1	25.4	32.3	26.1	5.1	31.2
BHS (Geo)	251	736	7.6	22.3	38.2	31.1	.08	31.9
District (Geo)	292	740	6.5	19.5	35.3	36	2.7	38.7
State (Alg. II)	45,865	741	21.3	14.3	18.7	40.4	5.3	45.8
BHS (Alg. II)	144	738	23.6	11.8	19.4	43.8	1.4	45.1

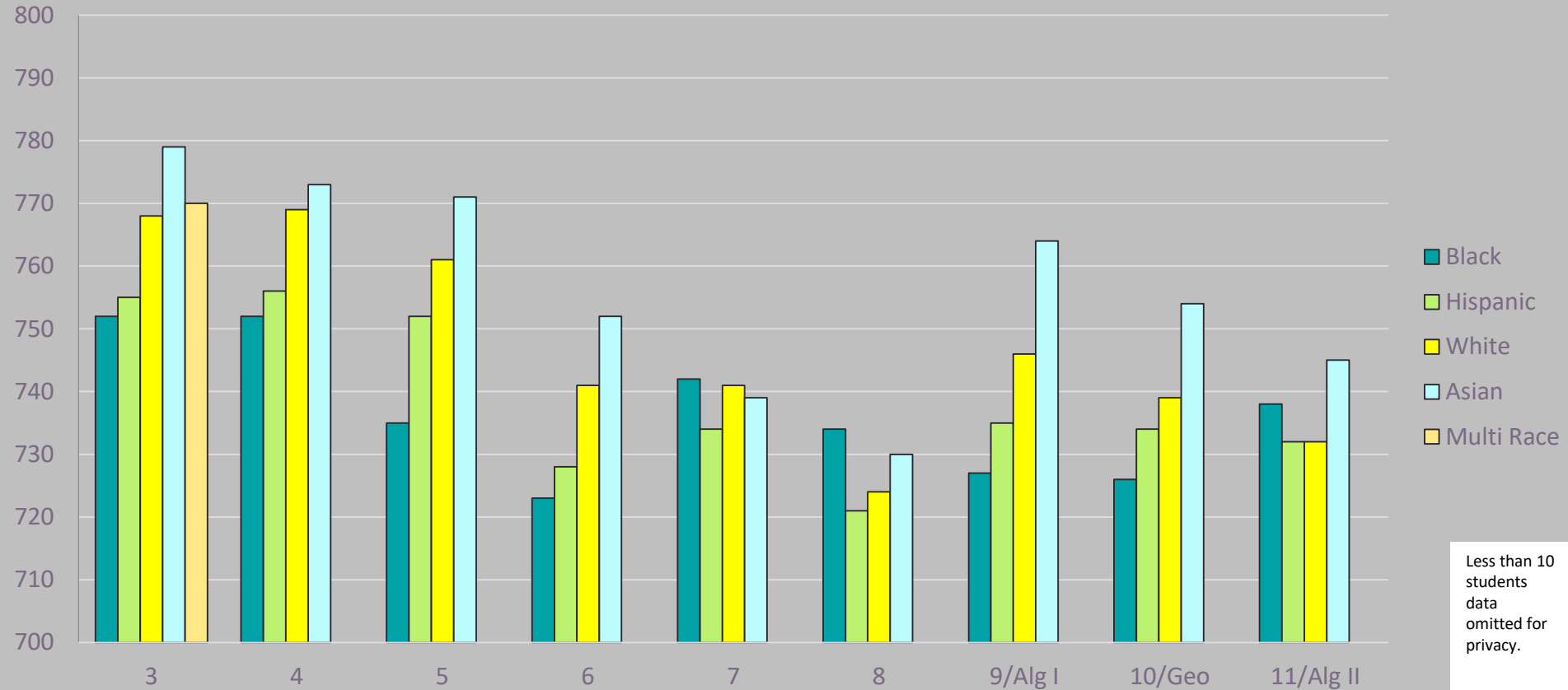
2017 Demographics Comparison - Math



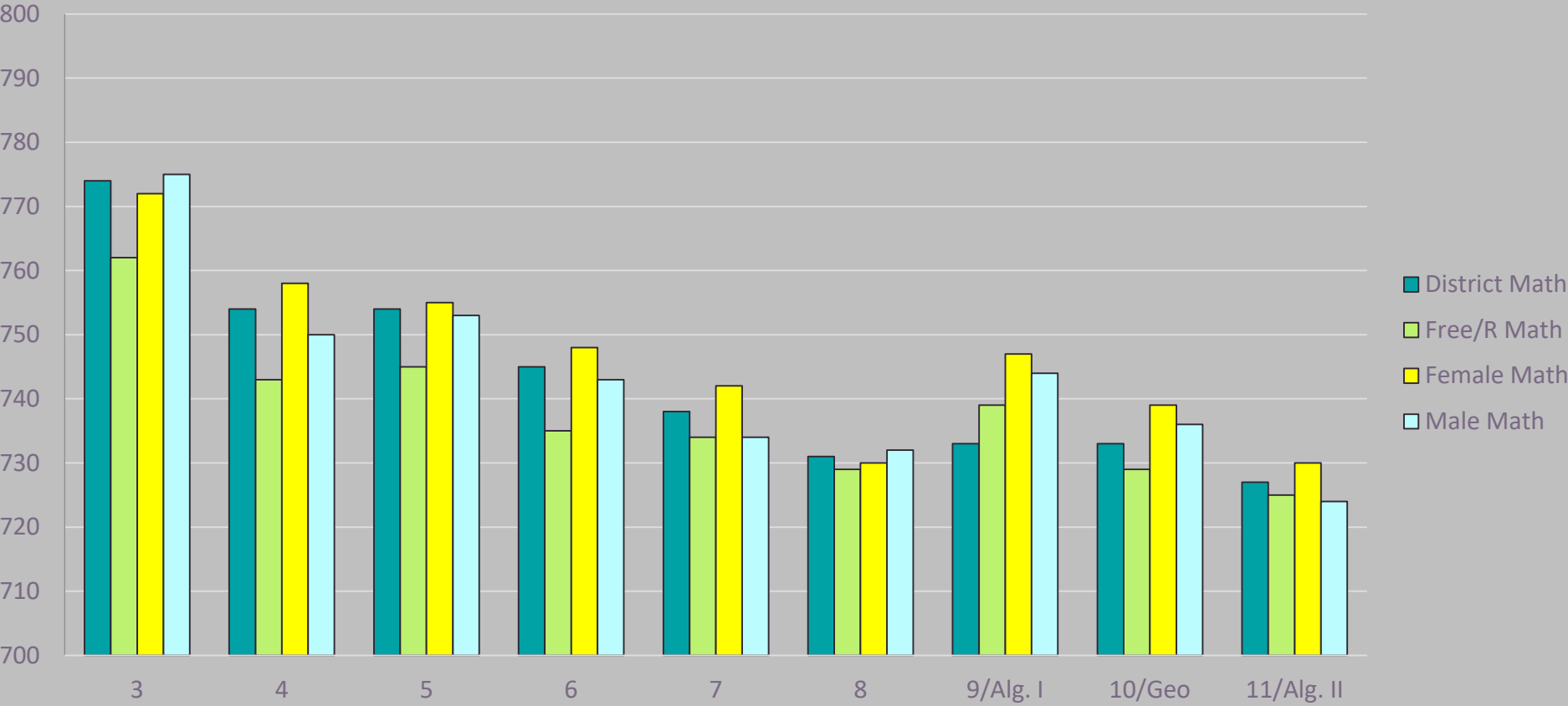
2018 Demographics Comparison- Math



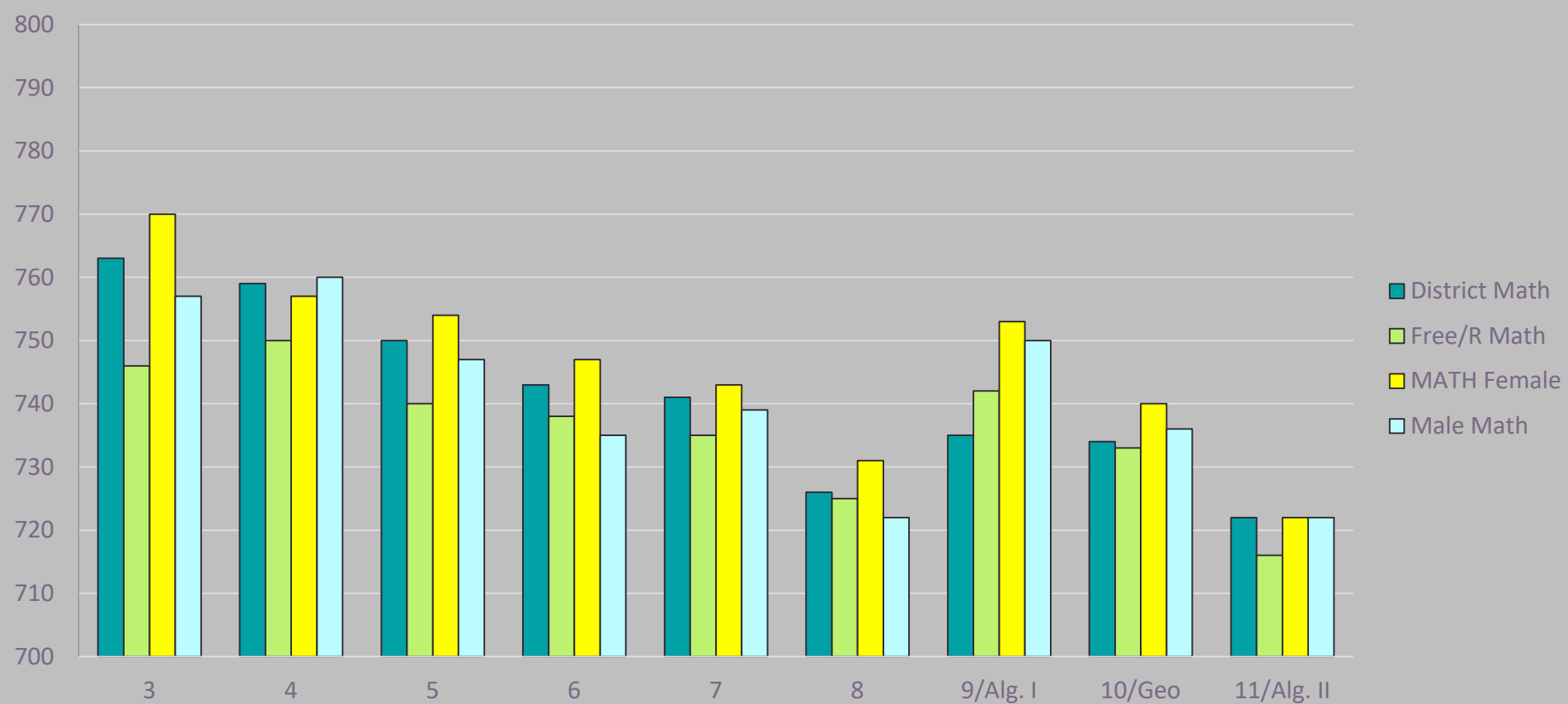
2019 Demographics Comparison - Math



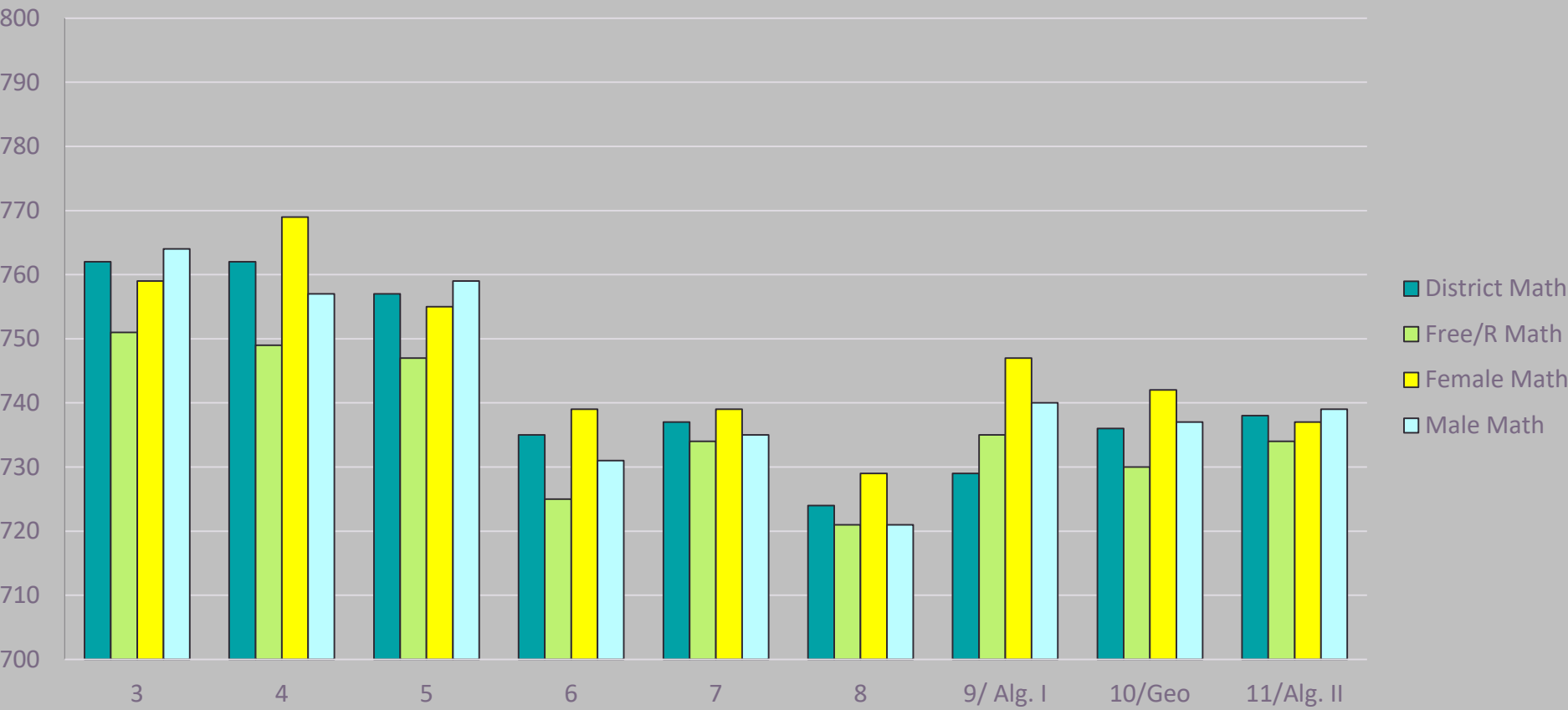
2017 NJSLA/ SES and Gender Comparison - Math



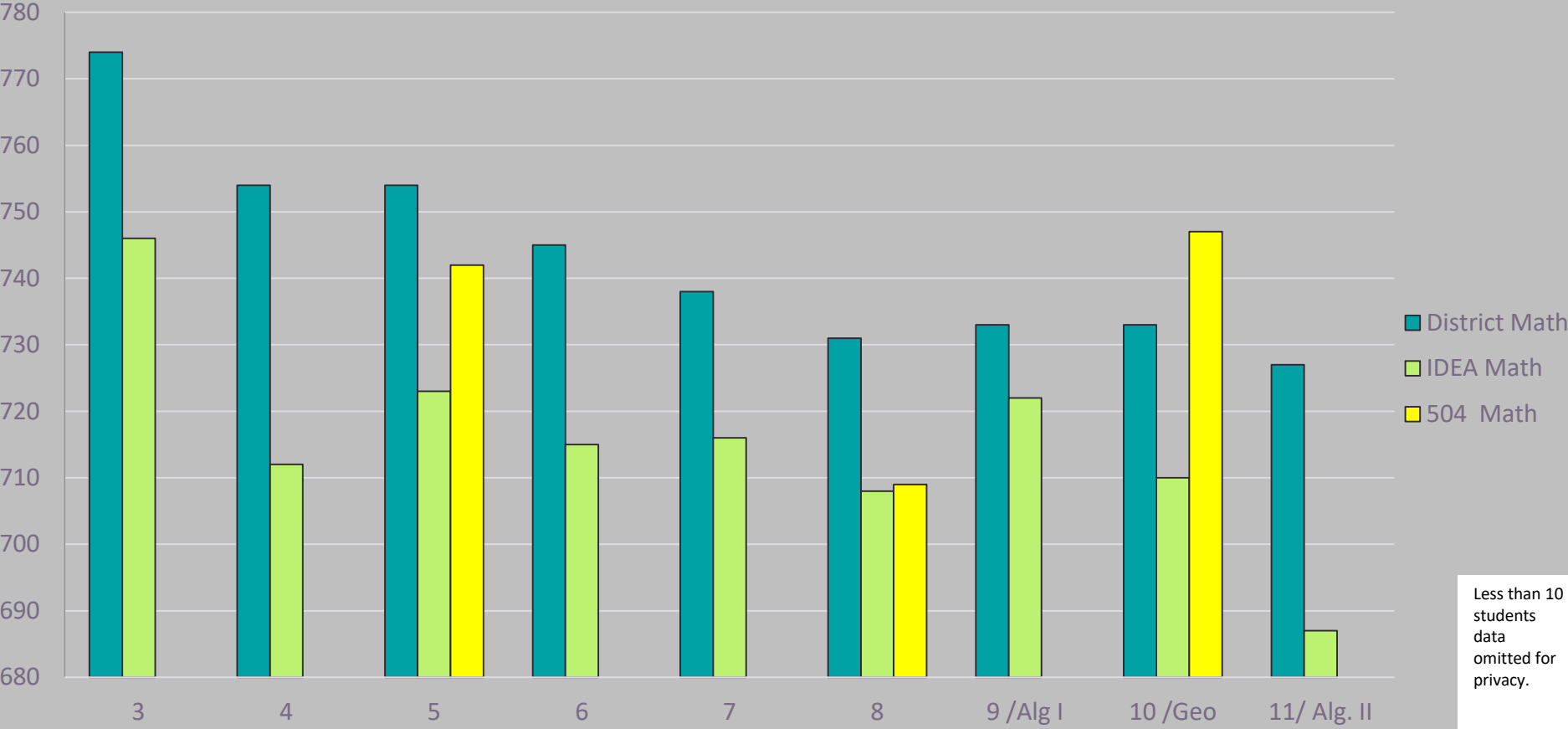
2018 NJSLA/ SES and Gender Comparison- Math



2019 NJSLA/ SES and Gender Comparison - Math

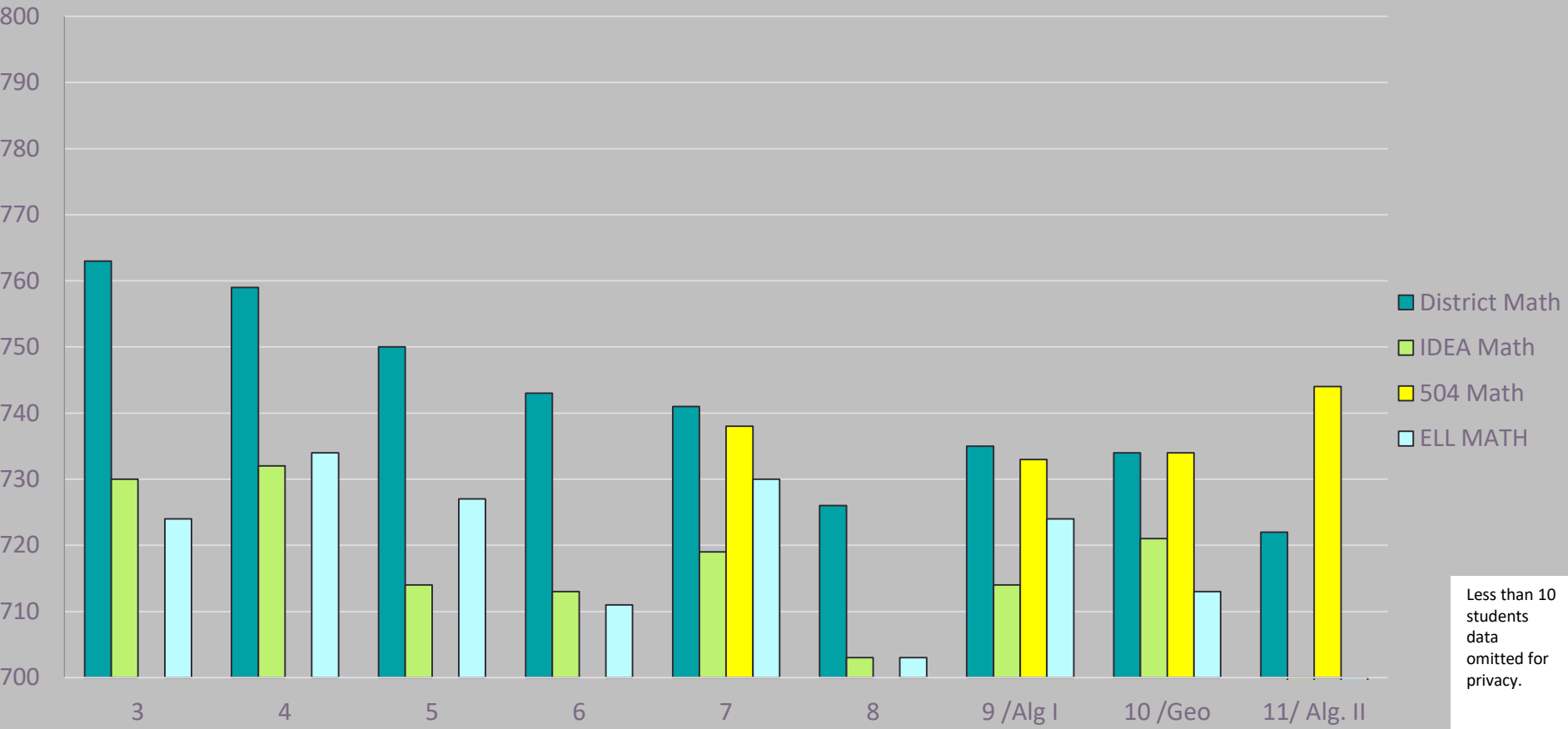


2017 NJSLA IDEA/ELL-Performance Comparison - Math

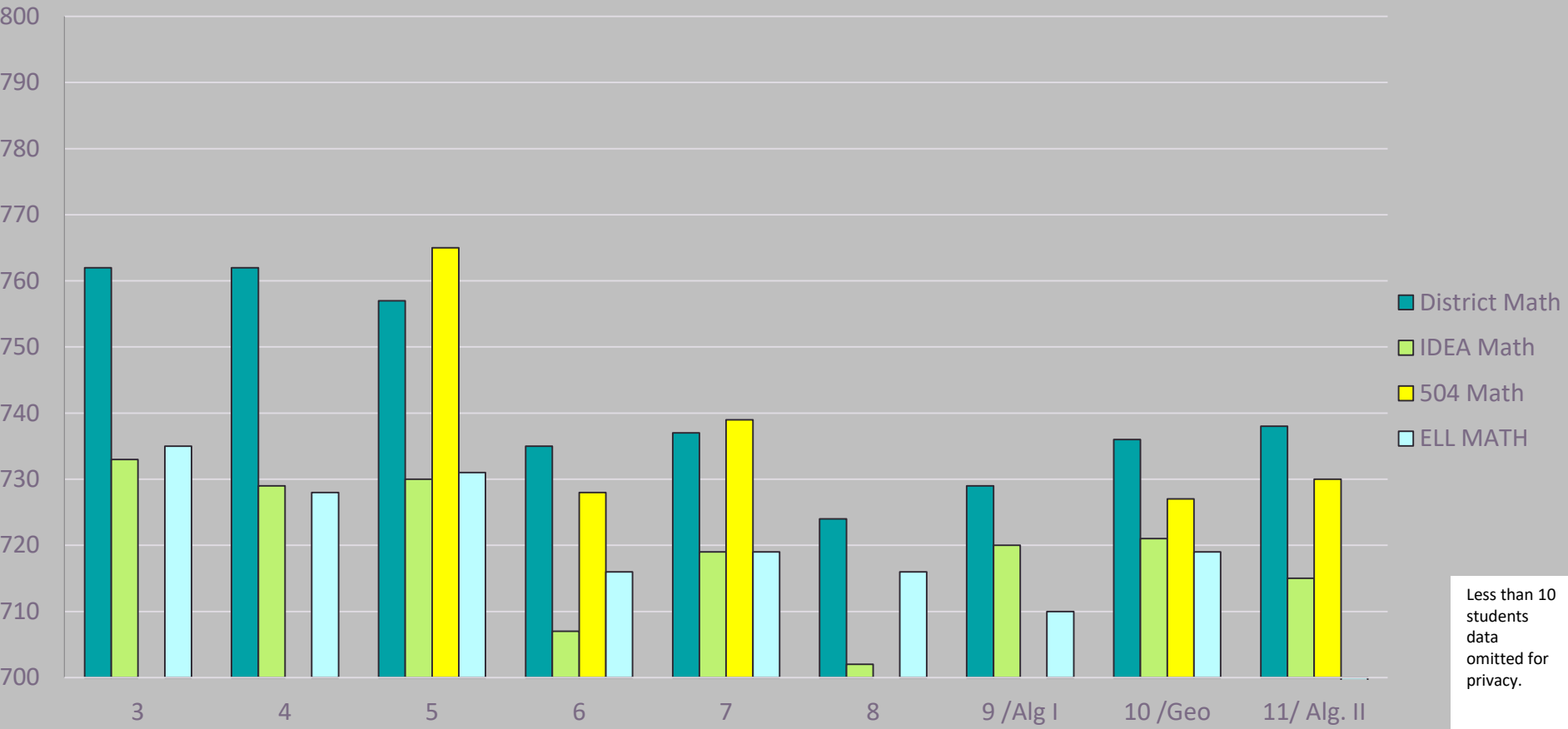


Less than 10 students data omitted for privacy.

2018 NJSLA IDEA/ELL-Performance Comparison - Math



2019 NJSLA IDEA/ELL-Performance Comparison -Math



Mathematics Assessment Summary

The Analysis:

- Elementary students had a higher average score as well as a higher percentage of students meeting/exceeding expectation as compared to the state cohort.
- Students in math 6-8, as well as high school Algebra I and Algebra II scored below state average. However, district data for Algebra I and Geometry boasts scores that are above that of the state cohort.
- The subgroups of ELLs, special education, and economically disadvantaged students on average scored below the district mean score.
- In general, the average score for females was higher than that for males, with the exception of 3rd and 5th grade as well as Algebra 2; the average score for White and Asian students was consistently higher than other ethnicities represented.
- Data with fewer than 10 participants is not included.

The Interventions:

Programs

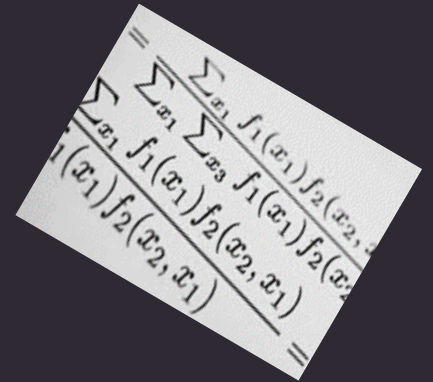
- Establish classes with a co-teaching model for special education, ELs, and former “C” level math students at RWB and BHS
- Abolish the two-year Algebra I (A and B) course
- Math Lab (BHS) and Math Skills (RWB)
- Addition of a .5 BSI instructor in Title I elementary schools for K-1 intervention

Professional Development

- Co-teaching training (K-12)
- Connected Math Coaching (6-8)
- Sheltered English Instruction (K-12)
- Differentiated Instruction

Extended day programs

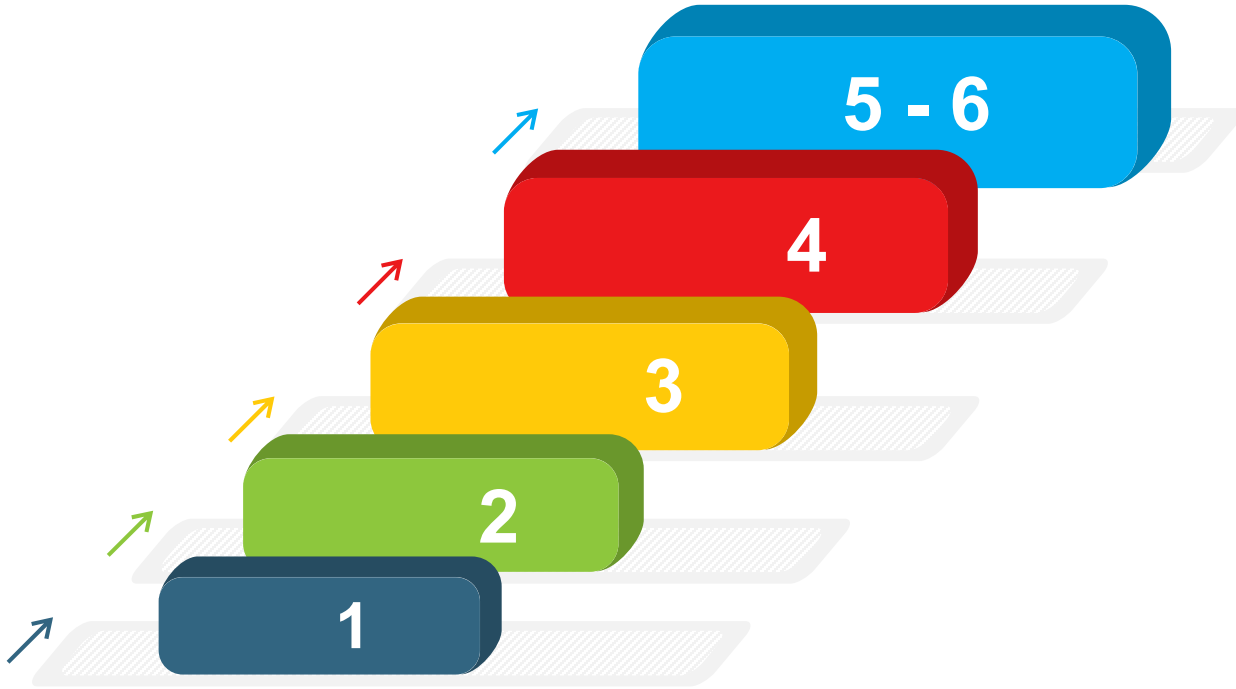
- Algebra I Retakes (BHS)
- Special Education Support (BHS)
- Math TIPS – Center-based instruction (RWB)
- ELL Support (K-12)
- Special Education (K-12)
- Content Area Math using Ready Math (K-5 2xs a week)
- NJSLA Math Prep – (K-5 February – April)





ACCESS Test Results

ACCESS 2.0 Performance Levels



- Bridging, Reaching
- Expanding
- Developing
- Emerging
- Entering

ACCESS 2.0 Participation



In the 2018-2019 school year a total of 166 elementary students took the ACCESS.

36 Kindergarten
30 Grade 1
33 Grade 2
23 Grade 3
23 Grade 4
12 Grade 5

In the 2018-2019 school year a total of 90 students took the ACCESS.

16 Grade 6
13 Grade 7
12 Grade 8
17 Grade 9
18 Grade 10
Under 10 students in grades 11 and 12

In the 2018-2019 school year, 60 elementary students in district received a 4 or above. At the secondary level 19 students received a score of 4 or above.

Students with a score of a 4.5 meet the testing element of the multiple criteria for exit from the ELL program



***DLM Test
Participation***

DLM Performance Levels



Advanced



At Target



Approaching Test



Emerging

DLM Test Participation



**In the school year
2016-2017 a total of
23 students took the
assessment in
grades 3 to 11**

**In the school year
2017-2018 a total of
23 students took the
assessment in
grades 3 to 11**

**In the school year
2018-2019 a total of
22 students took the
assessment in
grades 3 to 11**



NJSLA-Science Results

These scores have not yet been released to the school district, but will be reported on upon receipt

Any Questions?

