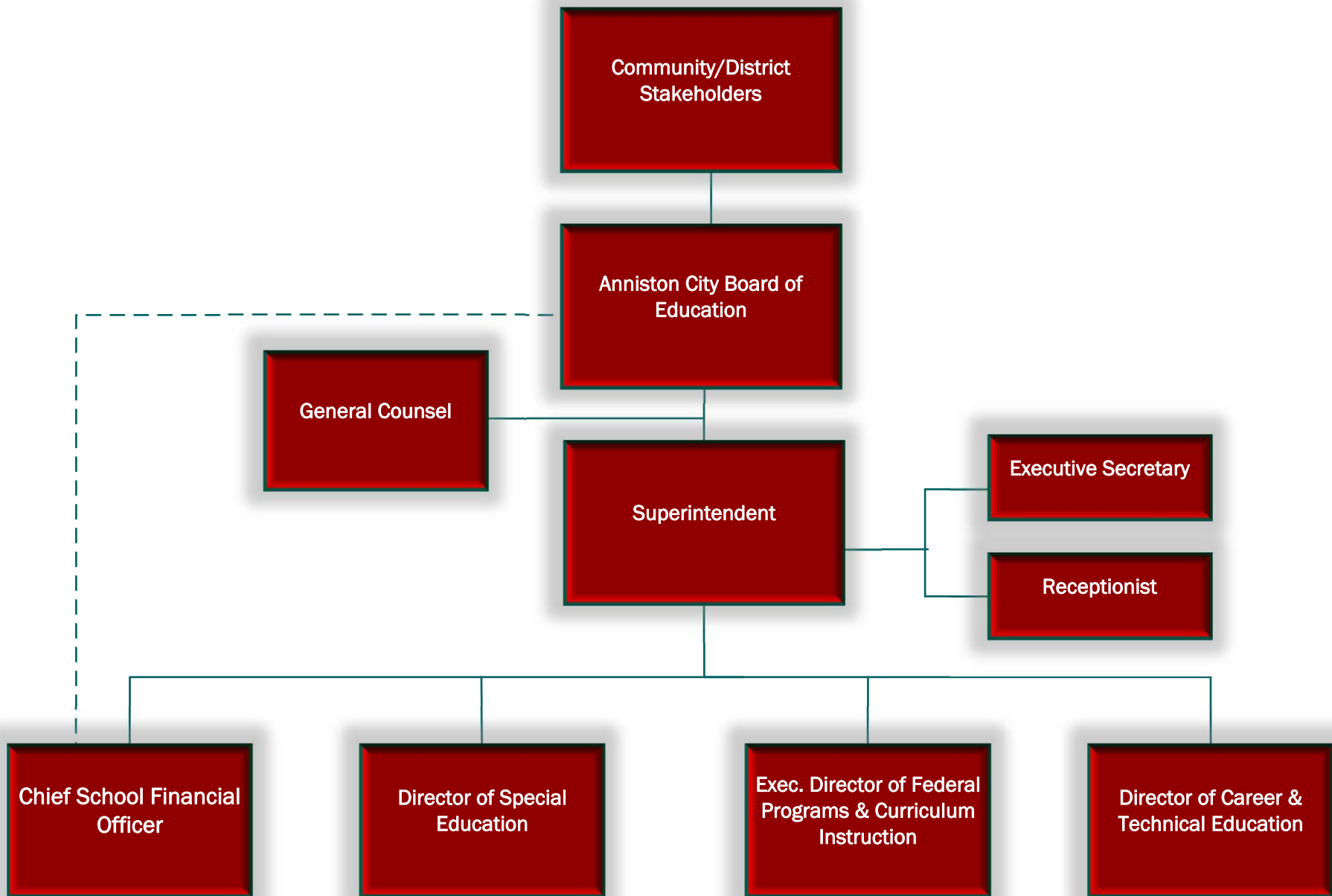




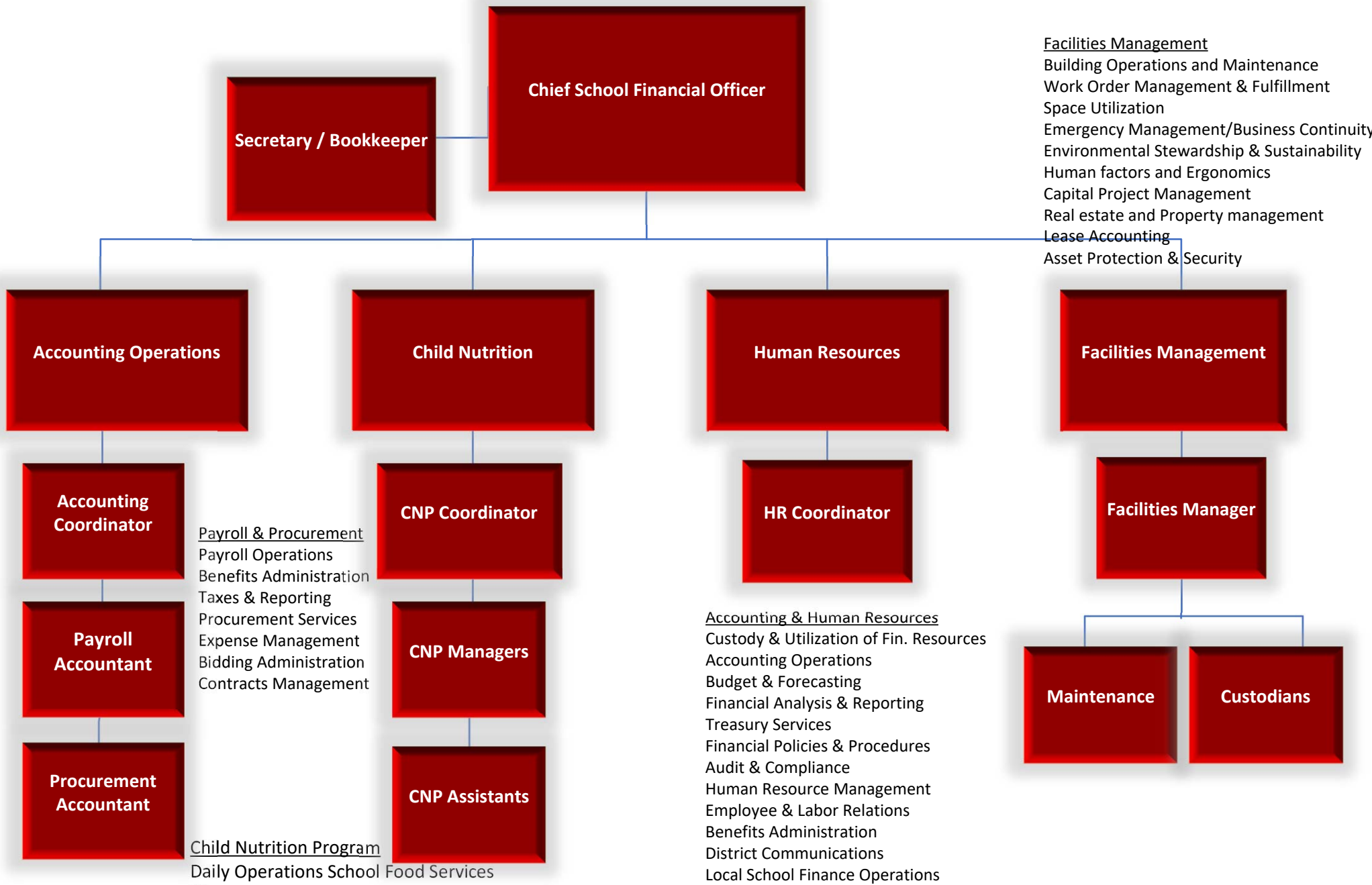
**ANNISTON CITY BOARD OF EDUCATION
ORGANIZATION CHART
2020-2021**

PROPOSED



Anniston City Schools
 Organization Chart
 2020-2021

PROPOSED



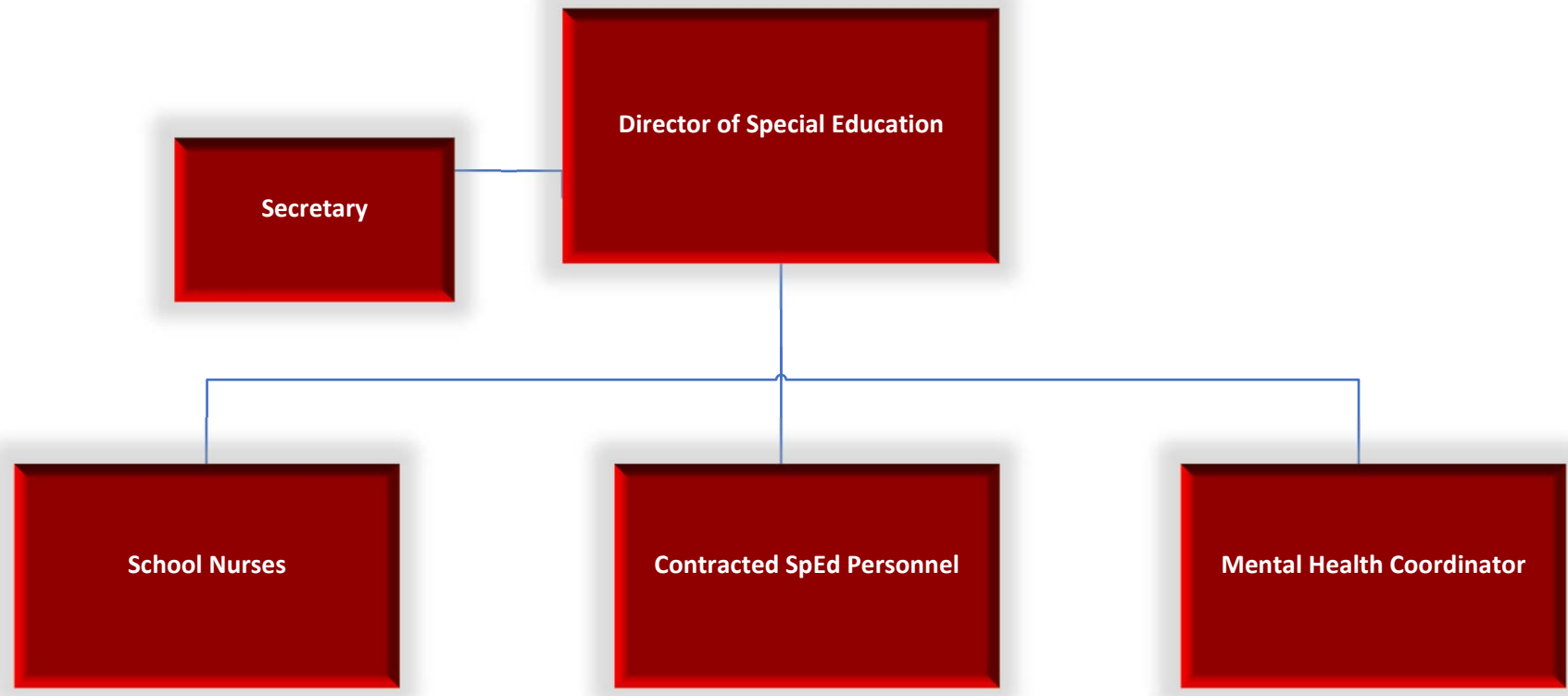
Facilities Management
 Building Operations and Maintenance
 Work Order Management & Fulfillment
 Space Utilization
 Emergency Management/Business Continuity
 Environmental Stewardship & Sustainability
 Human factors and Ergonomics
 Capital Project Management
 Real estate and Property management
 Lease Accounting
 Asset Protection & Security

Payroll & Procurement
 Payroll Operations
 Benefits Administration
 Taxes & Reporting
 Procurement Services
 Expense Management
 Bidding Administration
 Contracts Management

Child Nutrition Program
 Daily Operations School Food Services
 Meal Planning & Delivery
 Equipment & Supplies Procurement
 Compliance with USDA guidelines
 District Wellness
 School Safety/Maintenance
 Health & Regulatory Audits

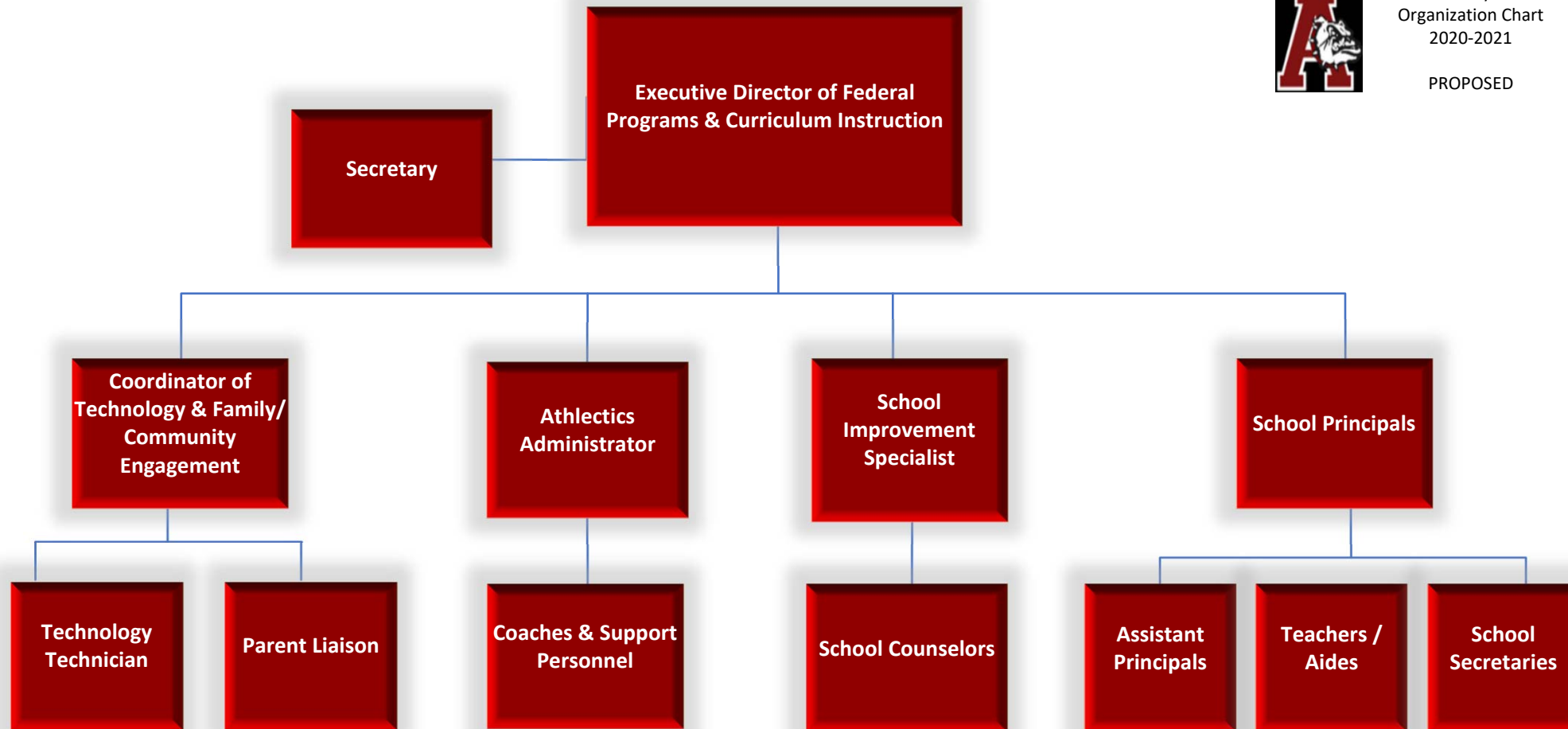
Accounting & Human Resources
 Custody & Utilization of Fin. Resources
 Accounting Operations
 Budget & Forecasting
 Financial Analysis & Reporting
 Treasury Services
 Financial Policies & Procedures
 Audit & Compliance
 Human Resource Management
 Employee & Labor Relations
 Benefits Administration
 District Communications
 Local School Finance Operations





Coordination of Gifted & Talented Program
Administration of School Nurses
Response to Intervention (RTI)
Management of IDEA/At Risk Services
PEY Due Process
Section 504
Hearings
Child Find
Private School IDEA Services
Fairbanks
Mental Health Services





Federal Programs / Curriculum & Instruction

Curriculum & Instruction
Management of School Administrators
Transportation
Home/Private/Alternative School
Student Services
Parent Engagement
Professional Development
Grants
Teacher Placement
English Language Learners

Technology & Family/Comm. Engagement

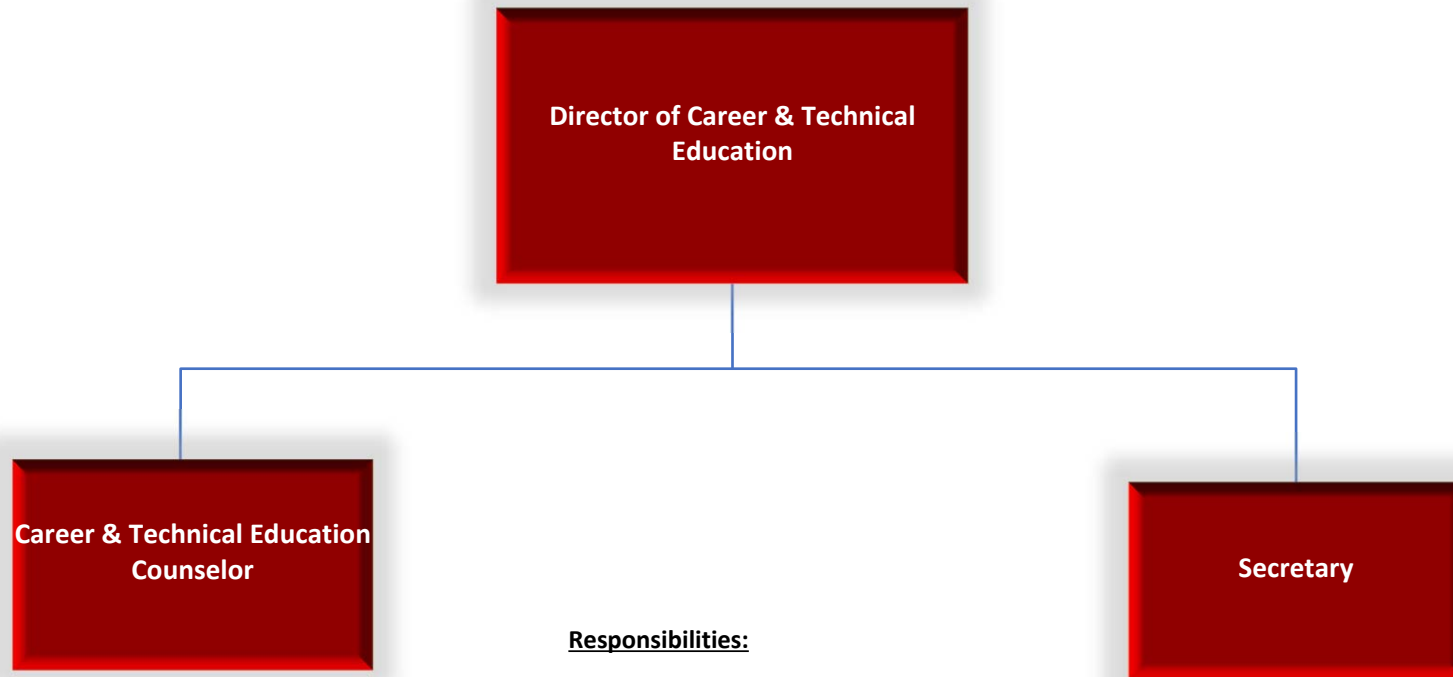
Network Administration
Software Management
Website Management
PowerSchool Administration
Device Management
Special Populations
Administration Evaluation
Family Engagement
Foster Care

School Improvement

Alternative School
Grants & Awards
Attendance Monitoring & Reporting
Disciplinary Services/PBIS
Graduation Rate – Compliance & Reporting
Counselors
Assessments

School Principals

Building Administration



Responsibilities:

- Management of CTE Programs
- CTE Planning & Budgets
- Curriculum Development for CTE programs
- Professional Development for CTE staff
- Inventory Management of CTE Equipment/Supplies
- Development of Community/ Business Partnerships
- Coordination CTE Dual Enrollment
- Employment Review & Placement
- Compliance of the CTE Regulations



Anniston City Schools
Organization Chart
2020-2021

PROPOSED