



SHADY SIDE ACADEMY

423 Fox Chapel Road
Pittsburgh, PA 15238

(t) 412-968-3000

(f) 412-968-3231

www.shadysideacademy.org

ADMINISTRATION

Bartley P. Griffith Jr. '93
President

Trixie Sabundayo
Head of Senior School

COLLEGE COUNSELORS

Lauren Lieberman '98
Director of College Counseling
llieberman@shadysideacademy.org

Julie A. Hertz
Assoc. Director of College Counseling
jhertz@shadysideacademy.org

Lucas Frankel
Assoc. Director of College Counseling
lfrankel@shadysideacademy.org

collegecounseling@shadysideacademy.org

CEEB: # 393901

Guiding Principles that act as fundamental points of guidance:
Honesty, Respect, Responsibility, Kindness and Safety.

ENROLLMENT (PK-12)	1,185
Country Day School	178
Junior School	325
Middle School	213
Senior School	479
Boarders	67
Students of Color	34%
Male/Female	55%/45%

Class of 2023 **111**

SENIOR SCHOOL STATS

Full-Time Faculty	73
Faculty - Advanced Degrees	80%
Faculty:Student Ratio	1:8
Average Class Size	13
Financial Assistance Granted	25%

2022-2023 SCHOOL PROFILE

Shady Side Academy is a nationally respected, co-educational private school in Pittsburgh for grades PK-12. The **Senior School**, located in the suburban Fox Chapel neighborhood of Pittsburgh on a 130-acre college-like campus with six academic buildings, is a college-preparatory school with an optional five- or seven-day boarding experience. Shady Side welcomes students from 100 zip codes in Allegheny County, plus 13 other PA counties, 13 states and nine countries. We embrace each other's differences and backgrounds, and know that this diversity adds to the richness and depth of our students' overall learning experience.

Accreditations: PAIS (Pennsylvania Association of Independent Schools), NAIS (National Association of Independent Schools), Middle States Association, TABS (The Association of Boarding Schools), PCIS (Pittsburgh Consortium of Independent Schools), NACAC (The National Association for College Admission Counselors), PACAC (Pennsylvania Association for College Admission Counselors), and ACCIS.

SENIOR SCHOOL CURRICULUM

The Senior School has a rigorous college preparatory curriculum, where education is viewed as building the skills and habits of inquiry, research, creativity, critical thinking and problem solving.

GRADING AND RANKING

Shady Side Academy maintains rigorous standards of grading and awards letter grades as follows:

A+	4.33	C+	2.33
A	4.0	C	2.0
A-	3.67	C-	1.67
B+	3.33	D+	1.33
B	3.0	D	1.0
B-	2.67	D-	.67

- Grade point averages (GPA) are not weighted
- GPAs are calculated based on year-end grades
- Shady Side Academy does not rank
- Highest GPA in the Class of 2022: 4.21

COURSE NUMBERING ON TRANSCRIPTS

Because Shady Side Academy offers so few designated advanced classes, we use an internal numbering system on our transcripts. The course numbering system indicates curricular sequence as follows:

- 100 level - 9th grade or introductory
- 200 level - 10th grade
- 300 level - 11th grade
- 400 level - 12th grade
- 500 level - AP or highest level offered

ADVANCED PLACEMENT or HONORS COURSES

Shady Side does not designate any courses as "honors" because all courses follow a rigorous college preparatory curriculum.

Advanced Placement courses are only offered in **three** subject areas: math, foreign language and computer science. Therefore, **most SSA students do not take more than two AP courses during their time at SSA.**

PANDEMIC ADAPTATIONS

Starting at the end of March 2020, Shady Side Academy transitioned to distance learning, offering a mix of synchronous and asynchronous coursework. Given the unprecedented nature of the pandemic, we made the following changes to our policies and procedures.

Spring 2020 Adaptations

- Pass/Fail grading for Term 3 of the 2019-20 school year
- Final grades for the 2019-20 school year were an average of Terms 1 & 2
- Final exams and all athletics were canceled in Spring 2020

2020-21 School Year Adaptations

- Opened school in early September in-person with an option for students to attend school remotely if unable to be physically present
- Welcomed 90% of students back to school in person
- Divided each trimester into two sessions with each student carrying fewer courses in each session with longer class periods.
- Made significant changes to most athletic teams' practice and competition schedules

Community Standards Upheld

- Community time, advising, assemblies and the typical spring ceremonies were modified as appropriate and continued to be an integral part of our learning experience.
- Attendance, participation, engagement and upholding of Shady Side Academy's Guiding Principles were consistently upheld through distance learning
- Guiding Principles (Respect, Responsibility, Kindness, Safety, Honesty) reinforced the highest standards of academic excellence and commitment

STANDARDIZED TESTING

These testing ranges are based on the tests that were taken by students in the classes of 2020, 2021, and 2022.

SAT (290 Test Takers)

Middle 50% Math	600-740
Middle 50% Verbal	620-710
Middle 50% Total	1220-1450

ACT (161 Test Takers)

Middle 50% English	26-35
Middle 50% Math	25-33
Middle 50% Reading	24-35
Middle 50% Science	25-33
Middle 50% Composite	25-33

THE SHADY SIDE EXPERIENCE

THINK Expansively

The majority of students explore a passion project or chosen profession through an **INDEPENDENT STUDY SENIOR PROJECT**.

Senior Project topics (small sample):

- Building a motorcycle
- Composing a musical
- Shadowing a cardiologist
- EMT training and certification



GLOBAL PERSPECTIVE

Global travel opportunities include:

- International service projects through the Parkin Fellowships
- Exchange programs in France, Germany, Spain, and China and a biannual theater trip to Scotland

SCIENCE RESEARCH SEMINAR

Students engage in a year-long class to develop research and analysis skills to be applied in cutting-edge science and engineering research through university partnerships.

SSA students are **empowered to make choices from a broad array of opportunities.**

ACT Ethically

Students are selected as associates of each academic department, providing an important voice in major curricular decisions and departmental policies.

Students serve as voting members on multiple committees that help shape the future of

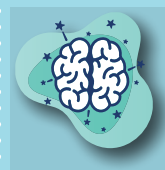
the school, including:

- Discipline Committee
- Admissions Committee



LEAD Responsibly

- LEAD@SSA is a student-led leadership conference held annually to develop leadership skills in students.



- Peer-to-peer student mentors lead orientation and help new students transition to SSA.

Discipline/Graduation Requirements

TYPICAL COURSE PROGRESSION

ENGLISH

4 full years
12 credits

GRADE 9

Foundations of Literature and Writing I

GRADE 10

Foundations of Literature and Writing II

GRADES 11-12

The Art of Persuasion (1 term)

50 different one-term English courses offered to juniors and seniors across broad literary themes such as British/European Literature before 1800, Literature of the United States, Focus on the World/Non-Anglophone Literature, and more.

GLIMCHER TECH & DESIGN HUB ADVANCED OFFERINGS

Entrepreneurship for Tech and Design

Community Connections Through Tech & Design Projects for Tech & Design

HISTORY

3 full years
9 credits
U.S. History research paper

GRADE 9

Problems in World History

GRADE 10

Patterns of Western Identity

GRADE 11

United States History

GRADE 12

Economics

Intro to Philosophy

9 upper-level History electives, including Pittsburgh History and Modern Social Justice & Revolutions

5 upper-level one-term Economics, Philosophy and Ethics electives

MATH

3 full years
9 credits

GRADES 9-12

Problem-Based Mathematics I

Problem-Based Mathematics II

Math III

Trigonometry and Function Analysis (TFA)

Trigonometry and Introductory Calculus (TIC)

CHS Statistics

CHS Calculus

AP Calculus AB

AP Calculus BC

Multivariable Calculus

7 upper-level one-term Math electives, such as Linear Algebra, Differential Equations and Fractal Geometry

SCIENCE

3 full years
3 lab sciences
9 credits

GRADE 9-12

Physics I

Chemistry

Biology I

Physics IA

ADVANCED OFFERINGS

Environmental Science

Advanced Topics in Astronomy

Psychology

Summer Research Seminar

Advanced Biology

Principles of Engineering

Physics II: Algebra

Physics II: Calculus

Organic Chemistry

6 upper-level one-term Inorganic Chemistry electives

WORLD LANGUAGES

3 full years
9 credits

GRADE 9

Chinese 1, 2, 2A

French 1, 2, 2A

German 1, 2

Latin 1, 2

Spanish 1, 2, 2A

GRADE 10

Chinese 2, 2A, 3, 3A

French 2, 2A, 3, 3A

German 2, 3

Latin 1, 2, 3

Spanish 2, 2A, 3, 3A

GRADE 11

Chinese 3, 3A, 4, 4A

French 3, 3A, 4, 4A

German 3, 4A

Latin 1, 2, 3

Spanish 3, 3A, 4, 4A

GRADE 12

Chinese 4, 4A, 5, 5AP

French 4, 4A, 5AP

German 4A, 5AP

Latin 4A, 5A

Spanish 4, 4A, 5, 5AP

COMPUTER SCIENCE

2 terms
2 credits

GRADES 9-12

Problem Solving: Karel & Elementary Graphics

Web Design

Game Design

Artificial Intelligence

Mobile Apps

3D Modeling

Robotics

Computer Architecture

ADVANCED OFFERINGS

Options above, PLUS:

AP Computer Science

Discrete Structures

Advanced Topics: Virtual Reality

Advanced Topics: Advanced Data Structures and Algorithms

Advanced Topics: Machine Learning

Advanced Topics in Computer Science

ARTS VISUAL AND PERFORMING

3 credits
All arts classes are pass/fail

GRADES 9-12

Concert Choir

Concert Band

Symphonic Band

String Orchestra

Electronic Sound Studio

Music Theory

Music Workshop: Guitar or Piano

Acting

Jazz Ensemble*

Chamber Choir*

Studio Art 2D

Studio Art 3D

Architecture

Ceramics

Digital Photography

Metal

Painting

Dark Room Lab Photography

Advanced Portfolio Studio Art*

*Audition or Selection Criteria Required

COLLEGE ENROLLMENTS FROM THE CLASSES OF 2019 - 2022

Allegheny College	John Carroll University	Syracuse University
American University	Johns Hopkins University	Temple University
Amherst College	Kent State University	Texas Christian University
Barnard College	Kenyon College	Tufts University
Bates College	Kutztown University of Pennsylvania	Tulane University
Boston College	Lafayette College	Union College
Boston University	Lawrence University	United States Merchant Marine Academy
Bowdoin College	Lehigh University	United States Military Academy
Bowling Green State University	Liberty University	United States Naval Academy
Brown University	Loyola Marymount University	University of Akron
Bucknell University	Loyola University Chicago	University of California - Berkeley
Carleton College	Maine Maritime Academy	University of California - Los Angeles
Carnegie Mellon University	Marietta College	University of California - San Diego
Case Western Reserve University	Marquette University	University of Chicago
Chatham University	Mercyhurst University	University of Cincinnati
Claremont McKenna College	Miami University - Oxford	University of Colorado - Boulder
Clarkson University	Michigan State University	University of Denver
Colby College	Middlebury College	University of Florida
Colgate University	MIT	University of Illinois - Urbana Champaign
College of Charleston	Montana State University	University of Kentucky
College of the Holy Cross	Mount Holyoke College	University of Maryland - College Park
College of Wooster	Muhlenberg College	University of Massachusetts - Amherst
Colorado College	Nazareth College	University of Miami
Colorado State University - Ft. Collins	New York University	University of Michigan - Ann Arbor
Columbia University	Niagara University	University of Minnesota
Connecticut College	Northeastern University	University of Mount Union
Cornell University	Northwestern University	University of Nevada - Las Vegas
Dartmouth College	Norwich University	University of New Hampshire
Davidson College	Oberlin College	University of North Carolina - Chapel Hill
Denison University	Ohio State University - Columbus	University of Notre Dame
DePaul University	Ohio University	University of Pennsylvania
Dickinson College	Paul Smith's College	University of Pittsburgh
Drexel University	Pennsylvania State University - Berks	University of Pittsburgh - Johnstown
Duke University	Pennsylvania State University - New Kensington	University of Pittsburgh at Greensburg
Duquesne University	Pennsylvania State University - University Park	University of Rhode Island
Eckerd College	Point Park University	University of Richmond
Elon University	Princeton University	University of Rochester
Emerson College	Providence College	University of Southern California
Emory University (Emory)	Purdue University	University of St Andrews
Fairfield University	Rensselaer Polytechnic Institute	University of Tennessee - Knoxville
Fashion Institute of Technology	Rhode Island School of Design	University of Toronto
Ferris State University	Rhodes College	University of Virginia
Fordham University	Rice University	University of Wisconsin - Madison
Franklin and Marshall	Ringling College of Art and Design	Vanderbilt University
Furman University	Rochester Institute of Technology	Villanova University
Gannon University	Rose-Hulman Institute of Technology	Virginia Polytechnic Institute
George Washington University	Rutgers University - New Brunswick	Wake Forest University
Georgetown University	Saint Francis University	Washington and Jefferson College
Georgia Institute of Technology	Saint Louis University	Washington and Lee University
Gordon College	Saint Olaf College	Washington University in St. Louis
Grove City College	Sarah Lawrence College	Wesleyan University
Hamilton College	Skidmore College	Western Michigan University
Hampton University	Slippery Rock University of Pennsylvania	Westminster College
Harvard University	Southern Methodist University	Wilkes University
High Point University	Spelman College	Williams College
Hobart and William Smith Colleges	Spring Arbor University	Yale University
Howard University	St. Lawrence University	York College of Pennsylvania
Indiana University	Stanford University	
Ithaca College	Swarthmore College	