




St. Anne's
EPISCOPAL SCHOOL

The Small School with a Big Heart



"SAES prepared me not just for high school, but for college. Thank you to the ever-patient teachers who spent so much time and energy developing each and every student to their full potential!" ~ Former Student

Our Mission

St. Anne's prepares students for secondary education and lifelong learning. We strive to enhance the intellectual, spiritual, physical, social, and artistic growth of our students so that they may realize their potential for good as citizens of local and world communities.

Some Things Are Better Small

Being a small Preschool-grade 8 educational institution offers many advantages. Our small size enables us to give each student a level of attention not possible in larger more impersonal educational environments. Our dedicated teachers really know our students. They understand their unique learning styles and personalities and are able to offer each child the appropriate support, challenge, and encouragement to ensure they continue to grow and thrive.

At St. Anne's we're small but our heart is big. Building on our Episcopalian foundations, we welcome all to our community and pursue teaching and learning with a spirit of openness, a quest for understanding, and a desire to harness our gifts in service to others.

Walk into any classroom at St. Anne's and you'll find it filled with the happy noise of children exploring, investigating, and discovering. Also sharing, helping, and giving.

We love that sound. We think you will, too.

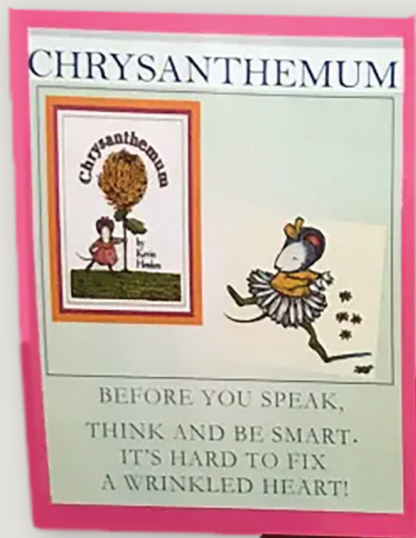


Educating with Heart

At St. Anne's we live out our Episcopal identity through our mission and our three tenets of Respect, Responsibility, and Compassion.

Through our weekly chapel services, religion classes, and daily devotions, we honor our Christian roots while also learning about and celebrating the beliefs and practices of the world's other great religions, all of which share a common commitment to goodness and service.

Through the unifying perspective that God loves us, we are inspired to show unconditional love to others and to serve our community and the wider world with all the gifts and talents with which we've been blessed.



Honoring Our Different Paths

We are committed to nurturing a learning community that is grounded in tolerance and acceptance and that honors the dignity and uniqueness of each individual. Our faculty, students, administrators, staff, and trustees come from diverse cultural, racial, religious, family, and economic backgrounds. This diversity, and the many perspectives it offers for learning and understanding, enriches our community.



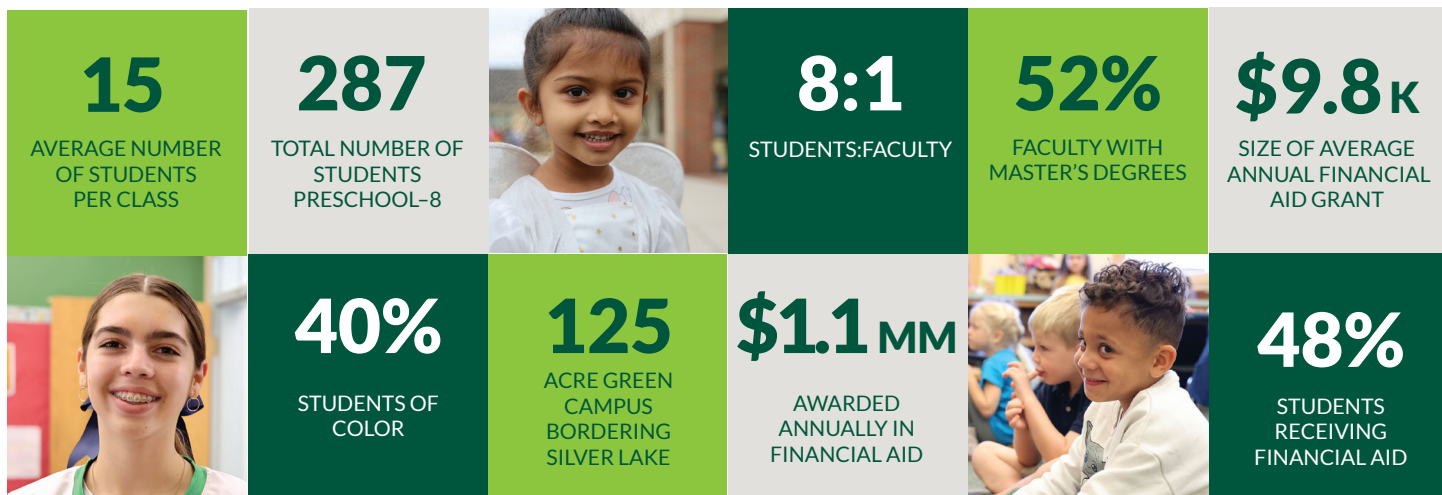
Learning Naturally

The one big thing about St. Anne's is its 125-acre campus encompassing a forest, meadow, garden, stream, and lake. Recognizing that there are many educational opportunities to be found in the natural world, we encourage our students to explore our campus and immerse themselves in the lessons of the environment. Through nature's lens, our students study math, science, literacy, and social studies.

Accommodations such as snow suits, head-to-toe waders, and the occasional campfire help keep students comfortable as they learn and play outside. Each of our 20 outdoor learning spaces has unique natural characteristics to instill a sense of curiosity, wonder, and inspiration.



Who We Are at a Glance



WE'RE CLOSER THAN YOU THINK!

A little over 30 minutes from Chestertown (MD), Dover, and Wilmington. Transportation currently available from Dover, Smyrna, Townsend, Middletown, and Chestertown.



WHERE DO OUR GRADUATES GO?

Our graduates have gone on to the following high schools, among others:*

- | | |
|-------------------------------|-----------------------------|
| Appoquinimink High School | Salesianum School |
| Archmere Academy | Sanford School |
| Caesar Rodney High School | Severn School (MD) |
| Choate Rosemary Hall (CT) | Smyrna High School |
| Church Farm School (PA) | St. Andrew's School |
| Dover High School | St. George's Vo-Tech School |
| Episcopal High School (VA) | St. Mark's High School |
| Groton School (MA) | St. Thomas More Academy |
| Gunston Day School (MD) | Tatnall School |
| Middletown High School | The Hill School (PA) |
| MOT Charter High School | Tower Hill School |
| Odessa High School | Ursuline Academy |
| Padua Academy | Wilmington Charter School |
| Phillips Academy Andover (MA) | Wilmington Friends School |
| Polytech High School | |

**Schools without a state designation are in Delaware.*