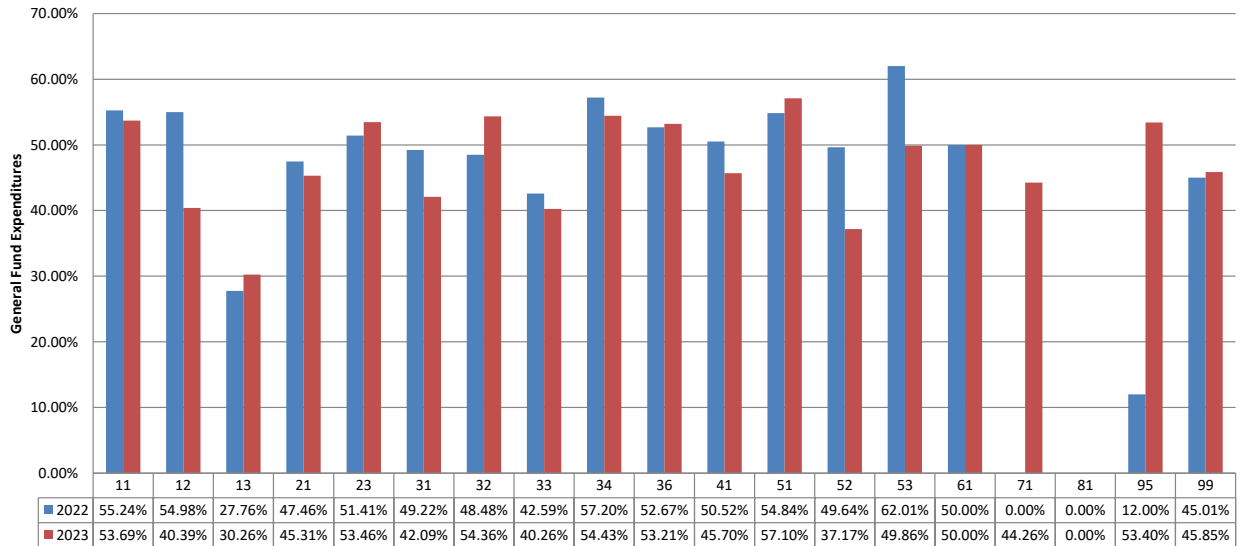


TOMBALL INDEPENDENT SCHOOL DISTRICT
FINANCIAL COMPARISON REPORT
As of January 31, 2023*
General Fund, Food Service, and Debt Service Funds
(AMOUNTS IN \$000)

	<u>Budget</u>	<u>Actual</u>	<u>% of Budget Realized / Expended</u>
General Fund Revenues			
Property Taxes and P&I	\$ 122,550	\$ 91,340	74.5%
Co-Curricular Activity	57	471	825.8%
Investment Income	933	1,214	130.1%
Rents, Fees, Misc.	649	446	68.7%
State Rev.- Foundation Program	57,064	40,663	71.3%
State Revenue - TRS On-Behalf	9,902	2,595	26.2%
State Revenue - Other Programs	0	0	0.0%
Federal Revenue Programs	1,350	388	28.7%
Total General Fund Revenues	\$ 192,505	\$ 137,117	71.2%
General Fund Expenditures by Function			
11 Instruction	\$ 118,285	\$ 63,511	53.7%
12 Instr. Resource & Media Services	2,775	1,121	40.4%
13 Curriculum Dev./Instr. Staff Development	1,261	381	30.3%
21 Instructional Leadership	5,215	2,363	45.3%
23 School Leadership	11,275	6,028	53.5%
31 Guidance & Counseling Services	7,669	3,228	42.1%
32 Social Work Services	77	42	54.4%
33 Health Services	2,434	980	40.3%
34 Pupil Transportation	8,836	4,810	54.4%
36 Co-curr./Extracurr. Activities	4,354	2,317	53.2%
41 General Administration	7,838	3,582	45.7%
51 Plant Maintenance & Operations	18,582	10,611	57.1%
52 Security & Monitoring	1,567	582	37.2%
53 Data Processing Services	3,342	1,666	49.9%
61 Community Services	22	11	50.0%
71 Leases	400	177	44.3%
81 Fac. Acquisition & Construction	0	0	0.0%
95 Juvenile Justice Alt. Ed. Program	25	13	53.4%
99 Other Intergovernmental	1,370	628	45.8%
Total General Fund Expenditures	\$ 195,327	\$ 102,051	52.2%

Budget Targets:

This chart represents the percentage actually expended of the appropriations approved by the Board by Function.



TOMBALL INDEPENDENT SCHOOL DISTRICT
 FINANCIAL COMPARISON REPORT
 As of January 31, 2023*
 General Fund, Food Service, and Debt Service Funds
 (AMOUNTS IN \$000)

	<u>Budget</u>	<u>Actual</u>	<u>% of Budget Realized / Expended</u>
<u>Food Service Fund Revenues</u>			
Food Sales	\$ 4,818	\$ 2,726	56.6%
State Revenue - TRS On-Behalf	239	105	43.9%
Federal/State Reimbursement	3,930	1,657	42.2%
Total Food Service Fund Revenues	<u>\$ 8,987</u>	<u>\$ 4,488</u>	49.9%
<u>Food Service Fund Expenditures</u>	<u>\$ 8,851</u>	<u>\$ 4,065</u>	45.9%
<u>Debt Service Fund Revenues</u>			
Property Taxes and P&I	\$ 51,573	\$ 40,192	77.9%
Investment Income	12	208	1731.7%
State Rev.-Foundation Allocation	715	1,584	221.6%
Sale of Bonds	0	25,650	0.0%
Total Debt Service Fund Revenues	<u>\$ 52,300</u>	<u>\$ 67,634</u>	129.3%
<u>Debt Service Fund Expenditures</u>	<u>\$ 52,300</u>	<u>\$ 39,230</u>	75.0%

****Review additional tabs (worksheets) for reconciliations of amendments to adopted revenue and expenditure appropriations.**

*Note: This report is based on preliminary information due to time constraints.

