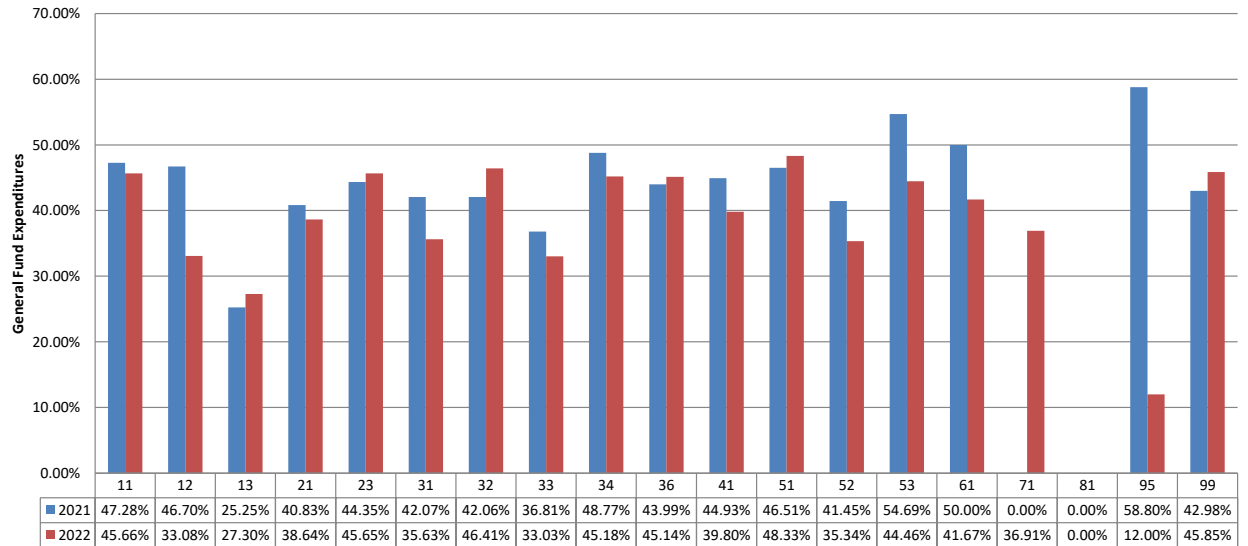


**TOMBALL INDEPENDENT SCHOOL DISTRICT**  
**FINANCIAL COMPARISON REPORT**  
As of December 31, 2022  
General Fund, Food Service, and Debt Service Funds  
(AMOUNTS IN \$000)

	Budget	Actual	% of Budget Realized / Expended
<b>General Fund Revenues</b>			
Property Taxes and P&I	\$ 122,550	\$ 61,769	50.4%
Co-Curricular Activity	57	424	743.1%
Investment Income	933	1,214	130.1%
Rents, Fees, Misc.	649	442	68.1%
State Rev.- Foundation Program	57,064	40,663	71.3%
State Revenue - TRS On-Behalf	9,902	2,162	21.8%
State Revenue - Other Programs	0	0	0.0%
Federal Revenue Programs	1,350	378	28.0%
<b>Total General Fund Revenues</b>	<b>\$ 192,505</b>	<b>\$ 107,052</b>	<b>55.6%</b>
<b>General Fund Expenditures by Function</b>			
11 Instruction	\$ 118,285	\$ 54,007	45.7%
12 Instr. Resource & Media Services	2,775	918	33.1%
13 Curriculum Dev./Instr. Staff Development	1,259	344	27.3%
21 Instructional Leadership	5,215	2,015	38.6%
23 School Leadership	11,275	5,147	45.7%
31 Guidance & Counseling Services	7,669	2,733	35.6%
32 Social Work Services	77	36	46.4%
33 Health Services	2,434	804	33.0%
34 Pupil Transportation	8,836	3,992	45.2%
36 Co-curr./Extracurr. Activities	4,356	1,967	45.1%
41 General Administration	7,838	3,120	39.8%
51 Plant Maintenance & Operations	18,582	8,980	48.3%
52 Security & Monitoring	1,567	554	35.3%
53 Data Processing Services	3,342	1,486	44.5%
61 Community Services	22	9	41.7%
71 Leases	400	148	36.9%
81 Fac. Acquisition & Construction	0	0	0.0%
95 Juvenile Justice Alt. Ed. Program	25	3	12.0%
99 Other Intergovernmental	1,370	628	45.8%
<b>Total General Fund Expenditures</b>	<b>\$ 195,327</b>	<b>\$ 86,891</b>	<b>44.5%</b>

**Budget Targets:**

**This chart represents the percentage actually expended of the appropriations approved by the Board by Function.**



TOMBALL INDEPENDENT SCHOOL DISTRICT  
 FINANCIAL COMPARISON REPORT  
 As of December 31, 2022  
 General Fund, Food Service, and Debt Service Funds  
 (AMOUNTS IN \$000)

	<u>Budget</u>	<u>Actual</u>	<u>% of Budget Realized / Expended</u>
<b><u>Food Service Fund Revenues</u></b>			
Food Sales	\$ 4,818	\$ 2,344	48.7%
State Revenue - TRS On-Behalf	239	88	36.6%
Federal/State Reimbursement	3,930	1,655	42.1%
Total Food Service Fund Revenues	<u>\$ 8,987</u>	<u>\$ 4,087</u>	45.5%
<b><u>Food Service Fund Expenditures</u></b>	<u>\$ 8,851</u>	<u>\$ 3,509</u>	39.6%
<b><u>Debt Service Fund Revenues</u></b>			
Property Taxes and P&I	\$ 51,573	\$ 27,185	52.7%
Investment Income	12	208	1731.7%
State Rev.-Foundation Allocation	715	1,584	221.6%
Sale of Bonds	0	25,650	0.0%
Total Debt Service Fund Revenues	<u>\$ 52,300</u>	<u>\$ 54,627</u>	104.4%
<b><u>Debt Service Fund Expenditures</u></b>	<u>\$ 52,300</u>	<u>\$ 39,199</u>	75.0%

\*\*Review additional tabs (worksheets) for reconciliations of amendments to adopted revenue and expenditure appropriations.



