

LEA Name : Lower Merion SD
Address : 301 E Montgomery Ave
Ardmore , PA 19003

County : Montgomery
AUN Number : 123464502
LEA Type : SD

Annual Financial Report Accuracy Certification Statement

For Fiscal Year Ending
6/30/2022

Pennsylvania Department of Education
&
Office of Comptroller Operations

PDE-2056: Intermediate Unit
PDE-2057: School District, AVTS/CTC, Charter School,
and Special Program Jointure

CERTIFICATION: By signing this page I agree that the electronic data submitted is a complete and accurate statement of the financial operations and status of the local education agency for the fiscal year. It has been prepared in accordance with generally accepted accounting principles and established Commonwealth of PA reporting guidelines.

Chief School Administrator Signature

Date

Board Secretary Signature

Date

Victor Orlando

Contact Person

orlandv@lmsd.org

Contact Person E-mail Address

(610)645-1970

Ext :

Contact Person Telephone Number

Contact Person Fax Number

Audit Certification
Annual Financial Report:
For Fiscal Year Ending **6/30/2022**
(Pursuant to PA School Code Section 218(b))

LEA Name : Lower Merion SD
AUN Number : 123464502
County : Montgomery

Audit Certification Due: 12/31/2022

This certification is applicable to the Annual Financial Report data submitted through the Consolidated Financial Reporting System (CFRS).

CERTIFICATION: By signing this page I agree that the financial statements of the school have been properly audited as noted above pursuant to Article XXIV, and in the auditor's professional opinion, the Annual Financial Report (PDE-2057) submitted through CFRS is materially consistent with the audited financial statements.

Chief School Administrator

Board Secretary

Signature

Date

Signature

Date

Victor Orlando

Contact Person

orlandv@lmsd.org

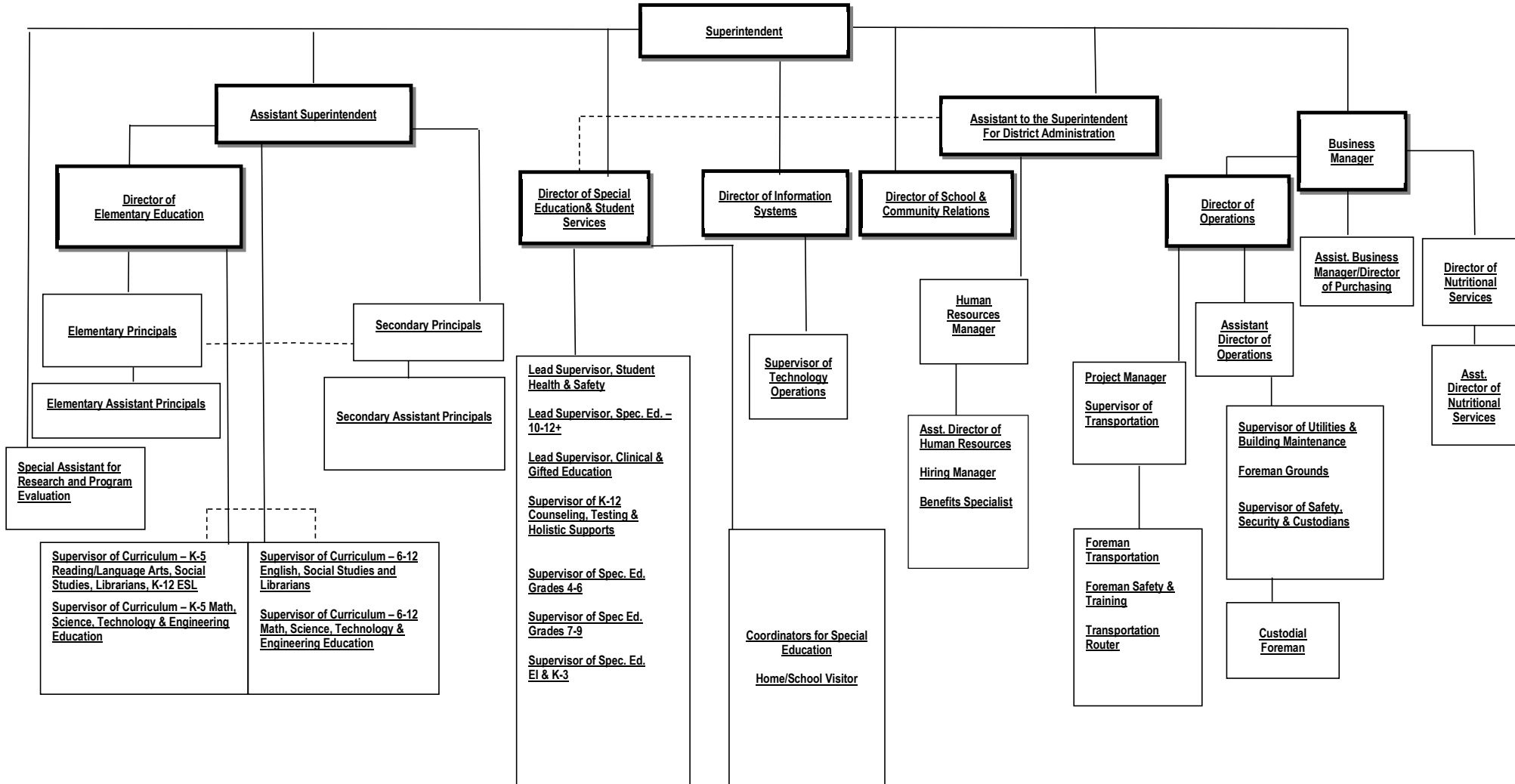
Contact Person E-mail Address

(610)645-1970 Ext :

Contact Person Telephone Number

Contact Person Fax Number

**Lower Merion School District
Organizational Chart**



Capitalization

Definition

Capital assets shall include but limited to land, improvements to land, easements, buildings, building improvements, vehicles, machinery, equipment, works of art and historical treasures and infrastructure. Capital assets are both tangible and intangible assets used in operations and have initial useful lives extending beyond a single reporting period. Equipment will not change its original shape, appearance or character with use and it can be expected to last more than one (1) year with reasonable care and maintenance.

Guidelines

Purchased Capital Assets

Purchased capital assets of \$5,000 or greater should be recorded at their historical/original cost. The cost of capital assets should include capitalized interest and ancillary charges necessary to place the asset into service. Ancillary charges include freight, site preparation and professional fees.

Capital assets should be depreciated over their useful lives as determined for each asset class. Inexhaustible capital assets such as land and land improvements should not be depreciated.

If determining historical costs is not practical due to inadequate records, reporting should be based on estimates of original cost at the date of construction or purchase.

Fixed asset records must include the acquisition date, cost, useful life, depreciation method and salvage value for capital asset classifications and groups.

Infrastructure

Infrastructure assets are long-lived capital assets that normally are stationary in nature and can normally be preserved for a significantly greater number of years than most capital assets. Infrastructure includes parking lots and sidewalks.

Infrastructure assets should be depreciated over the useful lives.

Routine repairs and maintenance costs are charges to operations as incurred. Expenditures that extend the useful life of the infrastructure are capitalized as part of the asset and depreciated over the newly established useful life.

Useful Lives

Fixed assets are to be depreciated over the following useful lives:

<u>Asset Class</u>	<u>Years</u>
School buildings	40-50
HVAC systems	20-25
Interior/Exterior construction	20-30
Sprinkler/Fire system	20-25
Outdoor equipment	15-20
Machinery and tools	10-15
Kitchen equipment	10-15
Custodial equipment	05-07
Furniture and accessories	15-20
Business machines	05-10
Vehicles	05-15
Audiovisual/Communication equipment	05-10

Depreciation Expense

Depreciation is allocated to expense in a systematic and rational manner. The straight-line method of depreciation is to be used.

Depreciation may be calculated for a class of assets, a network of assets or individual assets.

Disposals

Sale of Fixed Assets: When fixed assets are sold, a calculation of gain or loss on disposal is required. The calculation is based upon the amount of proceeds received less the net book value (cost less accumulated depreciation taken on the asset).

Trade-ins: The value given for a trade is part of the cost of the newly acquired asset. The costs and accumulated depreciation of the traded-in asset must be removed from the books. Any gain or loss resulting from the disposition of the asset will be recognized as a gain or loss on disposal.

Val Number

Description

Justification

12195 REG: Current Year AFR Beginning Fund Balance must equal Prior Year AFR Ending Fund Balance. Justifications to this error must fully explain the situation that prompted a fund balance restatement. "Auditor Adjustment" is not a sufficient justification.

Total Govt Funds, Beg Bal: \$127,039,144.00
 PY Ending Bal, Govt Funds: \$127,038,942.00

The beginning fund balance was restated to reflect fund balance from fiduciary funds that did not meet the criteria under GASB 84 as fiduciary funds since the obligations belong to the government as well as the funds being originally provided by the govt.

12196 REG - Fund 10: Current Year AFR Beginning Fund Balance must equal Prior Year AFR Ending Fund Balance. Justifications to this error must fully explain the situation that prompted a fund balance restatement. "Auditor Adjustment" is not a sufficient justification.

REG Fund 10, Beg Fund Bal: \$43,149,291.00
 PY Ending Fund Balance: \$43,149,091.00

The beginning fund balance was restated to reflect fund balance from fiduciary funds that did not meet the criteria under GASB 84 as fiduciary funds since the obligations belong to the government as well as the funds being originally provided by the govt.

30501 Revenue Detail: AFR amount must equal PDE FAI system amount.

7311, AFR Rev Detail: \$1,115,785.83
 7311, PDE FAI System: \$999,946.54

A deduction from transportation subsidy in the amount of \$115,839.29 occurred on 6/30/22 payment. A reversal of this deduction was subsequently received on a 9/29/22 payment. The amount was accrued as a receivable due to it pertaining to the 21-22 year.

30685 Revenue Detail: Current Tax Revenue amount cannot exceed 50% variance from prior year amount. Correct the data or enter a justification.

6153, Current AFR Rev Detail: \$7,646,890.69
 6153, Prior AFR Rev Detail: \$5,060,729.13

in 21/22, the school district received an unprecedented increase in transfer tax revenue due to the robust housing market which was significantly more than the prior year.

42420 Expenditure Detail: Total current year 2700-513 expenditure varies from prior year by 10%. Correct the data or enter a justification.

2700-513, AFR Exp Detail: \$2,338,723.77
 2700-513, PY AFR Amount: \$951,580.64

In 20/21 due to the pandemic, remote instruction occurred for most of the school year which caused contracted transportation services to decrease. In 21/22, in-person instruction returned which increased contracted transportation services.

Amounts Expressed in Whole Dollars	<u>General Fund</u> <u>(10)</u>	<u>Student Sponsored</u> <u>Activity Fund</u> <u>(21)</u>	<u>Public Purpose Trust</u> <u>(27)</u>	<u>Other Compt Approved</u> <u>(28)</u>	<u>Athletic / Activity</u> <u>(29)</u>
Assets And Deferred Outflows Of Resources					
Assets					
0100 Cash and Cash Equivalents	70,001,161				
0110 Investments	8,059,666				
0120 Taxes Receivable	3,164,618				
0130 Due From Other Funds	154,881				
0141 Due From Other Governments	13,527,442				
0142 State Revenue Receivable					
0143 Federal Revenue Receivable					
0145 Other Intergovernmental Revenue Receivable					
0146 Due from Primary Government					
0147 Due from Component Unit					
0150 Other Receivables	424,068				
0170 Inventories					
0180 Prepaid Expenses (Expenditures)	516,347				
0190 Other Current Assets					
Total Assets	\$95,848,183				
0910 Deferred Outflows of Resources					
Total Assets And Deferred Outflows Of Resources	\$95,848,183				

Amounts Expressed in Whole Dollars	<u>Capital Reserve (690.</u> <u>1850)</u> <u>(31)</u>	<u>Capital Reserve (1431)</u> <u>(32)</u>	<u>Other Capital Projects</u> <u>Fund</u> <u>(39)</u>	<u>Debt Service</u> <u>(40)</u>	<u>Permanent</u> <u>(90)</u>
Assets And Deferred Outflows Of Resources					
Assets					
0100 Cash and Cash Equivalents		6,998,208	19,623,570	5,940,820	
0110 Investments			5,004,142		
0120 Taxes Receivable					
0130 Due From Other Funds		6,889,179			
0141 Due From Other Governments					
0142 State Revenue Receivable					
0143 Federal Revenue Receivable					
0145 Other Intergovernmental Revenue Receivable					
0146 Due from Primary Government					
0147 Due from Component Unit					
0150 Other Receivables			8,019		
0170 Inventories					
0180 Prepaid Expenses (Expenditures)					
0190 Other Current Assets					
Total Assets		\$13,887,387	\$24,635,731	\$5,940,820	
0910 Deferred Outflows of Resources					
Total Assets And Deferred Outflows Of Resources		\$13,887,387	\$24,635,731	\$5,940,820	

Amounts Expressed in Whole Dollars	<u>Total Governmental Funds</u>
Assets And Deferred Outflows Of Resources	
Assets	
0100 Cash and Cash Equivalents	102,563,759
0110 Investments	13,063,808
0120 Taxes Receivable	3,164,618
0130 Due From Other Funds	7,044,060
0141 Due From Other Governments	13,527,442
0142 State Revenue Receivable	
0143 Federal Revenue Receivable	
0145 Other Intergovernmental Revenue Receivable	
0146 Due from Primary Government	
0147 Due from Component Unit	
0150 Other Receivables	432,087
0170 Inventories	
0180 Prepaid Expenses (Expenditures)	516,347
0190 Other Current Assets	
Total Assets	\$140,312,121
0910 Deferred Outflows of Resources	
Total Assets And Deferred Outflows Of Resources	\$140,312,121

Amounts Expressed in Whole Dollars

	<u>General Fund</u> <u>(10)</u>	<u>Student Sponsored</u> <u>Activity Fund</u> <u>(21)</u>	<u>Public Purpose Trust</u> <u>(27)</u>	<u>Other Compt Approved</u> <u>(28)</u>	<u>Athletic / Activity</u> <u>(29)</u>
Liabilities And Deferred Inflows Of Resources And Fund Balances					
Liabilities					
0400 Due to Other Funds	7,150,715				
0411 Due to Other Governments					
0412 Due to Primary Government					
0413 Due to Component Unit					
0420 Accounts Payable	22,063,898				
0430 Contracts Payable					
0440 Current Portion of Long-Term Debt					
0450 Short-Term Payables					
0461 Accrued Salaries and Benefits	36,235,484				
0462 Payroll Deductions and Withholding					
0480 Unearned Revenues	237,470				
0490 Other Current Liabilities					
Total Liabilities	\$65,687,567				
0950 Deferred Inflows of Resources	2,011,325				
Fund Balances					
0810 Nonspendable Fund Balance	516,347				
0820 Restricted Fund Balance	12,000,000				
0830 Committed Fund Balance	13,300,000				
0840 Assigned Fund Balance					
0850 Unassigned Fund Balance	2,332,944				
Total Fund Balances	\$28,149,291				
Total Liabilities, Deferred Inflows Of Resources And Fund Balances	\$95,848,183				

LEA : 123464502 Lower Merion SD

Printed 11/22/2022 3:07:56 PM

Amounts Expressed in Whole Dollars	<u>Capital Reserve (690.</u> <u>1850</u> <u>(31)</u>	<u>Capital Reserve (1431)</u> <u>(32)</u>	<u>Other Capital Projects</u> <u>Fund</u> <u>(39)</u>	<u>Debt Service</u> <u>(40)</u>	<u>Permanent</u> <u>(90)</u>
Liabilities And Deferred Inflows Of Resources And Fund Balances					
Liabilities					
0400 Due to Other Funds					
0411 Due to Other Governments					
0412 Due to Primary Government					
0413 Due to Component Unit					
0420 Accounts Payable		1,120,312	4,470,865		
0430 Contracts Payable					
0440 Current Portion of Long-Term Debt					
0450 Short-Term Payables					
0461 Accrued Salaries and Benefits					
0462 Payroll Deductions and Withholding					
0480 Unearned Revenues					
0490 Other Current Liabilities					
Total Liabilities		\$1,120,312	\$4,470,865		
0950 Deferred Inflows of Resources					
Fund Balances					
0810 Nonspendable Fund Balance					
0820 Restricted Fund Balance		12,767,075	20,164,866	5,940,820	
0830 Committed Fund Balance					
0840 Assigned Fund Balance					
0850 Unassigned Fund Balance					
Total Fund Balances		\$12,767,075	\$20,164,866	\$5,940,820	
Total Liabilities, Deferred Inflows Of Resources And Fund Balances		\$13,887,387	\$24,635,731	\$5,940,820	

LEA : 123464502 Lower Merion SD

Printed 11/22/2022 3:07:56 PM

Amounts Expressed in Whole Dollars

Total Governmental Funds

Liabilities And Deferred Inflows Of Resources And Fund Balances

Liabilities

0400 Due to Other Funds	7,150,715
0411 Due to Other Governments	
0412 Due to Primary Government	
0413 Due to Component Unit	
0420 Accounts Payable	27,655,075
0430 Contracts Payable	
0440 Current Portion of Long-Term Debt	
0450 Short-Term Payables	
0461 Accrued Salaries and Benefits	36,235,484
0462 Payroll Deductions and Withholding	
0480 Unearned Revenues	237,470
0490 Other Current Liabilities	

Total Liabilities \$71,278,744

0950 Deferred Inflows of Resources	2,011,325
------------------------------------	-----------

Fund Balances

0810 Nonspendable Fund Balance	516,347
0820 Restricted Fund Balance	50,872,761
0830 Committed Fund Balance	13,300,000
0840 Assigned Fund Balance	
0850 Unassigned Fund Balance	2,332,944

Total Fund Balances \$67,022,052

Total Liabilities, Deferred Inflows Of Resources And Fund Balances \$140,312,121

Amounts Expressed in Whole Dollars	<u>General Fund</u> <u>(10)</u>	<u>Student Sponsored</u> <u>Activity Fund</u> <u>(21)</u>	<u>Public Purpose Trust</u> <u>(27)</u>	<u>Other Compt Approved</u> <u>(28)</u>	<u>Athletic / Activity</u> <u>(29)</u>
Revenues					
6000 Revenue from Local Sources	253,558,993				
7000 Revenue from State Sources	42,386,983				
8000 Revenue from Federal Sources	2,869,842				
Total Revenues	\$298,815,818				
Expenditures					
1000 Instruction	169,481,392				
2000 Support Services	86,367,830				
3000 Operation of Non-Instructional Services	6,252,096				
4000 Facilities Acquisition, Construction and Improvement Services					
5110 Debt Service	29,692,393				
5130 Refund of Prior Year Revenues / Receipts	15,000,000				
5140 Leases	132,928				
Total Expenditures	\$306,926,639				
Excess (Deficiency) Of Revenues Over Expenditures	(\$8,110,821)				
Other Financing Sources (Uses)					
9110 Face Value of Bonds Issued					
9120 Proceeds from Refunding of Bonds					
9130 Bond Premiums					
9200 Proceeds from Extended-Term Financing and Leases					
9300 Interfund Transfers - IN					
9400 Sale of or Compensation for Loss of Fixed Assets					
9710 Transfers from Component Units					
9720 Transfers from Primary Governments					
9910 Other Financing Sources Not Listed in the 9000 Series					
9990 Insurance Recoveries					
5120 Debt Service – Refunded Bonds					
5150 Bond Discounts					
5200 Interfund Transfers – Out	6,889,179				
5300 Transfers Out to Component Units/Primary Governments					
Total Other Financing Sources (Uses)	(\$6,889,179)				

LEA : 123464502 Lower Merion SD

Printed 11/22/2022 3:08:05 PM

Amounts Expressed in Whole Dollars	<u>Capital Reserve (690, 1850 (31)</u>	<u>Capital Reserve (1431 (32)</u>	<u>Other Capital Projects Fund (39)</u>	<u>Debt Service (40)</u>	<u>Permanent (90)</u>
Revenues					
6000 Revenue from Local Sources		10,332	50,223	7,219	
7000 Revenue from State Sources					
8000 Revenue from Federal Sources					
Total Revenues		\$10,332	\$50,223	\$7,219	
Expenditures					
1000 Instruction			280,917		
2000 Support Services		5,131,793	1,410,950		
3000 Operation of Non-Instructional Services					
4000 Facilities Acquisition, Construction and Improvement Services		1,728,082	43,860,568		
5110 Debt Service					
5130 Refund of Prior Year Revenues / Receipts					
5140 Leases					
Total Expenditures		\$6,859,875	\$45,552,435		
Excess (Deficiency) Of Revenues Over Expenditures		(\$6,849,543)	(\$45,502,212)	\$7,219	
Other Financing Sources (Uses)					
9110 Face Value of Bonds Issued					
9120 Proceeds from Refunding of Bonds					
9130 Bond Premiums					
9200 Proceeds from Extended-Term Financing and Leases			438,265		
9300 Interfund Transfers - IN		6,889,179			
9400 Sale of or Compensation for Loss of Fixed Assets					
9710 Transfers from Component Units					
9720 Transfers from Primary Governments					
9910 Other Financing Sources Not Listed in the 9000 Series					
9990 Insurance Recoveries					
5120 Debt Service – Refunded Bonds					
5150 Bond Discounts					
5200 Interfund Transfers – Out					
5300 Transfers Out to Component Units/Primary Governments					
Total Other Financing Sources (Uses)		\$6,889,179	\$438,265		

Amounts Expressed in Whole Dollars	<u>Total Governmental Funds</u>
Revenues	
6000 Revenue from Local Sources	253,626,767
7000 Revenue from State Sources	42,386,983
8000 Revenue from Federal Sources	2,869,842
Total Revenues	\$298,883,592
Expenditures	
1000 Instruction	169,762,309
2000 Support Services	92,910,573
3000 Operation of Non-Instructional Services	6,252,096
4000 Facilities Acquisition, Construction and Improvement Services	45,588,650
5110 Debt Service	29,692,393
5130 Refund of Prior Year Revenues / Receipts	15,000,000
5140 Leases	132,928
Total Expenditures	\$359,338,949
Excess (Deficiency) Of Revenues Over Expenditures	(\$60,455,357)
Other Financing Sources (Uses)	
9110 Face Value of Bonds Issued	
9120 Proceeds from Refunding of Bonds	
9130 Bond Premiums	
9200 Proceeds from Extended-Term Financing and Leases	438,265
9300 Interfund Transfers - IN	6,889,179
9400 Sale of or Compensation for Loss of Fixed Assets	
9710 Transfers from Component Units	
9720 Transfers from Primary Governments	
9910 Other Financing Sources Not Listed in the 9000 Series	
9990 Insurance Recoveries	
5120 Debt Service – Refunded Bonds	
5150 Bond Discounts	
5200 Interfund Transfers – Out	6,889,179
5300 Transfers Out to Component Units/Primary Governments	
Total Other Financing Sources (Uses)	\$438,265

Amounts Expressed in Whole Dollars	<u>General Fund</u> <u>(10)</u>	<u>Student Sponsored</u> <u>Activity Fund</u> <u>(21)</u>	<u>Public Purpose Trust</u> <u>(27)</u>	<u>Other Compt Approved</u> <u>(28)</u>	<u>Athletic / Activity</u> <u>(29)</u>
Special And Extraordinary Items					
9920 Special Items – Gains					
9930 Extraordinary Items – Gains					
5520 Special Items – Losses					
5530 Extraordinary Items – Losses					
Net Change In Fund Balances	(\$15,000,000)				
Fund Balance					
0001 Fund Balance - Beginning of Fiscal Year	43,149,291				
Fund Balance - End Of Year	\$28,149,291				

Amounts Expressed in Whole Dollars	<u>Capital Reserve (690.1850)</u> <u>(31)</u>	<u>Capital Reserve (1431)</u> <u>(32)</u>	<u>Other Capital Projects</u> <u>Fund</u> <u>(39)</u>	<u>Debt Service</u> <u>(40)</u>	<u>Permanent</u> <u>(90)</u>
Special And Extraordinary Items					
9920 Special Items – Gains					
9930 Extraordinary Items – Gains					
5520 Special Items – Losses					
5530 Extraordinary Items – Losses					
Net Change In Fund Balances		\$39,636	(\$45,063,947)	\$7,219	
Fund Balance					
0001 Fund Balance - Beginning of Fiscal Year		12,727,439	65,228,813	5,933,601	
Fund Balance - End Of Year		\$12,767,075	\$20,164,866	\$5,940,820	

Amounts Expressed in Whole Dollars	<u>Total Governmental Funds</u>
Special And Extraordinary Items	
9920 Special Items – Gains	
9930 Extraordinary Items – Gains	
5520 Special Items – Losses	
5530 Extraordinary Items – Losses	
Net Change In Fund Balances	(\$60,017,092)
Fund Balance	
0001 Fund Balance - Beginning of Fiscal Year	127,039,144
Fund Balance - End Of Year	\$67,022,052

Amounts Expressed in Whole Dollars	<u>Food Service</u> <u>(51)</u>	<u>Child Care</u> <u>Operations</u> <u>(52)</u>	<u>Other Enterprise</u> <u>(58)</u>	<u>TOTAL</u>	<u>Internal Service</u> <u>(60)</u>
Assets And Deferred Outflows Of Resources					
Current Assets					
0100 Cash and Cash Equivalents	1,468,446			1,468,446	
0110 Investments					
0130 Due From Other Funds	257,892			257,892	
0141 Due From Other Governments	612,403			612,403	
0142 State Revenue Receivable					
0143 Federal Revenue Receivable					
0146 Due from Primary Government					
0147 Due from Component Unit					
0150 Other Receivables	20,521			20,521	
0170 Inventories	168,611			168,611	
0180 Prepaid Expenses (Expenditures)					
0190 Other Current Assets					
Total Current Assets	\$2,527,873			\$2,527,873	
Noncurrent Assets					
0211 Land					
0212 Site Improvements (Net)					
0220 Buildings and Building Improvements (Net)					
0230 Machinery, Equipment and Furniture (Net)	87,319			87,319	
0250 Construction in Progress					
0260 Long Term Prepayments					
0290 Other Noncurrent Assets					
Total Noncurrent Assets	\$87,319			\$87,319	
0910 Deferred Outflows of Resources	670,279			670,279	
Total Assets And Deferred Outflows Of Resources	\$3,285,471			\$3,285,471	

Amounts Expressed in Whole Dollars	<u>Food Service</u> <u>(51)</u>	<u>Child Care</u> <u>Operations</u> <u>(52)</u>	<u>Other Enterprise</u> <u>(58)</u>	<u>TOTAL</u>	<u>Internal Service</u> <u>(60)</u>
Liabilities And Deferred Inflows Of Resources And Net Position					
Current Liabilities					
0400 Due to Other Funds	101,720			101,720	
0411 Due to Other Governments					
0413 Due to Component Unit					
0420 Accounts Payable	50,623			50,623	
0430 Contracts Payable					
0440 Current Portion of Long-Term Debt					
0450 Short-Term Payables					
0461 Accrued Salaries and Benefits					
0462 Payroll Deductions and Withholding					
0480 Unearned Revenues	310,630			310,630	
0490 Other Current Liabilities					
Total Current Liabilities	\$462,973			\$462,973	
Noncurrent Liabilities					
0510 Bonds Payable					
0520 Extended-Term Financing Agreements Payable					
0530 Lease Obligations					
0540 Accumulated Compensated Absences					
0550 Authority Lease Obligations					
0560 Other Post-Employment Benefits (OPEB)	181,404			181,404	
0570 Net Pension Liability	3,148,511			3,148,511	
0599 Other Noncurrent Liabilities					
Total Noncurrent Liabilities	\$3,329,915			\$3,329,915	
Total Liabilities	\$3,792,888			\$3,792,888	
0950 Deferred Inflows of Resources	545,777			545,777	
Net Position					
0791 Net Investment in Capital Assets					
0008 Restricted Net Position (0792 – 0798)	87,319			87,319	
0799 Unrestricted Net Position	(1,140,513)			(1,140,513)	
Total Net Position	(\$1,053,194)			(\$1,053,194)	
Total Liabilities And Deferred Inflows Of Resources And Net Position	\$3,285,471			\$3,285,471	

Amounts Expressed in Whole Dollars	<u>Food Service</u> <u>(51)</u>	<u>Child Care Operations</u> <u>(52)</u>	<u>Other Enterprise</u> <u>(58)</u>	<u>TOTAL</u>	<u>Internal Service</u> <u>(60)</u>
Operating Revenues					
6600 Food Service Revenue	497,611			497,611	
0071 Charges for Services					
0072 Other Operating Revenue					
Total Operating Revenues	\$497,611			\$497,611	
Operating Expenses					
100 Personnel Services – Salaries	1,125,149			1,125,149	
200 Personnel Services – Employee Benefits	651,134			651,134	
300 Purchased Professional and Technical Services	3,773			3,773	
400 Purchased Property Services	28,863			28,863	
500 Other Purchased Services	2,508			2,508	
600 Supplies	1,561,716			1,561,716	
740 Depreciation	16,250			16,250	
810 Dues and Fees	2,293			2,293	
880 Refunds of Prior Years' Receipts					
890 Miscellaneous Expenditures					
Total Operating Expenses	\$3,391,686			\$3,391,686	
Operating Income (Loss)	(\$2,894,075)			(\$2,894,075)	
Non Operating Revenues (Expenses)					
6500 Earnings on Investments	2,648			2,648	
6920 Contributions and Donations from Private Sources					
6930 Gains or Losses on Sale of Fixed Assets	5,300			5,300	
6991 Refunds of a Prior Year Expenditure					
7000 Revenue from State Sources	329,803			329,803	
8000 Revenue from Federal Sources	4,060,324			4,060,324	
9990 Insurance Recoveries					
820 Claims and Judgments Against the LEA					
830 Interest					
TOTAL Non Operating Revenues (Expenses)	\$4,398,075			\$4,398,075	
Income (Loss) Before Contributions And Transfers	\$1,504,000			\$1,504,000	

Amounts Expressed in Whole Dollars	<u>Food Service</u> <u>(51)</u>	<u>Child Care Operations</u> <u>(52)</u>	<u>Other Enterprise</u> <u>(58)</u>	<u>TOTAL</u>	<u>Internal Service</u> <u>(60)</u>
Contributions, Transfers, and Special and Extraordinary Items					
5200 Interfund Transfers – Out					
5300 Transfers Out to Component Units/Primary Governments					
5520 Special Items – Losses					
5530 Extraordinary Items – Losses					
9300 Interfund Transfers - IN					
9500 Capital Contributions					
9700 Transfers IN From Component Units/Primary Governments					
9920 Special Items – Gains					
9930 Extraordinary Items – Gains					
Change In Net Position	\$1,504,000			\$1,504,000	
0002 Net Position - Beginning of Fiscal Year	(2,557,194)			(2,557,194)	
0003 Accounting Changes / Residual Equity Transfers					
Net Position - End Of Year	(\$1,053,194)			(\$1,053,194)	

LEA : 123464502 Lower Merion SD

Printed 11/22/2022 3:08:20 PM

Amounts Expressed in Whole Dollars	<u>Food Service</u> <u>(51)</u>	<u>Child Care Operations</u> <u>(52)</u>	<u>Other Enterprise</u> <u>(58)</u>	<u>TOTAL</u>	<u>Internal Service(60)</u>
Cash Flows From Operating Activities					
0011 Cash Receipts From Users	444,576			444,576	
0012 Cash Receipts From Assessments Made to Other Funds					
0013 Cash Receipts From Earnings on Investments					
0014 Cash Receipts From Other Operating Revenue					
0015 Cash Payments To Employees For Services	1,897,344			1,897,344	
0016 Cash Payments For Insurance Claims					
0017 Cash Payments To Suppliers For Goods and Services	1,762,100			1,762,100	
0018 Cash Payments For Other Operating Expenses					
Net Cash Provided By (Used For) Operating Activities	(\$3,214,868)			(\$3,214,868)	
Cash Flows From Non-Capital Financing Activities					
0021 Receipts From Local Sources - 6000					
0022 Receipts From State Sources - 7000	312,917			312,917	
0023 Receipts From Federal Sources -8000	3,412,669			3,412,669	
0024 Notes and Loans Received (Repaid)					
0025 Interest Paid on Notes/Loans - 5100-830					
0026 Operating Transfers In (Out)/Residual Equity Trans					
0027 Operating Transfers In (Out) Primary Government / Comp Unit					
0028 Receipts From Refund of Prior Year Expenditures - 6991					
0029 Special and Extraordinary Gains (losses)					
0030 Receipts from Insurance Recoveries -9990					
Net Cash Prov By (Used for) Non-Capital Financing Activities	\$3,725,586			\$3,725,586	
Cash Flows From Capital and Related Financing Activities					
0031 Payments For Fac Acq, Const, and Imp - 4000	(3,689)			(3,689)	
0032 Gain / (Loss) on Sale of Fixed Assets - 6930	5,300			5,300	
0033 Proceeds From Extended Term Financing - 9200					
0034 Principal Paid on Financing Agreements					
0035 Interest Paid on Financing Agreements - 5100-830					
0036 (Inc) Dec in Contributed Capital					
Net Cash Prov By (Used for) Capital and Related Financing Activities	\$1,611			\$1,611	
Cash Flows From Investing Activities					
0041 Earnings on Investments - 6500	2,648			2,648	
0042 Purchase of Inv Securities / Deposits to Inv Pools					
0043 Receipts From Investment Pool Withdrawals					
0044 Proceeds from Sale and Maturity of Inv Securities					

LEA : 123464502 Lower Merion SD

Printed 11/22/2022 3:08:20 PM

0045 Loans Received (Paid)

Net Cash Prov By (Used for) Investing Activities	\$2,648	\$2,648
---	----------------	----------------

LEA : 123464502 Lower Merion SD

Printed 11/22/2022 3:08:20 PM

	<u>Food Service</u> <u>(51)</u>	<u>Child Care Operations</u> <u>(52)</u>	<u>Other Enterprise</u> <u>(58)</u>	<u>TOTAL</u>	<u>Internal Service</u> <u>(60)</u>
Net Increase (Decrease) in Cash Flows	514,977			514,977	
0004 Cash and Cash Equivalents Beginning of Year	953,469			953,469	
Cash and Cash Equivalents at Year End	\$1,468,446			\$1,468,446	
<hr/>					
Reconciliation of Operating Income (Loss) To Net Cash Provided by (Used For) Operating Activities					
0005 Operating Income (Loss) per REP	(2,894,075)			(2,894,075)	
Adjustments					
0051 Depreciation and Net Amortization	16,250			16,250	
0052 Provision for Uncollectible Accounts					
0053 Other Adjustments	231,333			231,333	
Effect of Changes in Assets, Liabilities, Deferred Outflows and Deferred Inflows					
0054 (Inc) Dec In Accounts Receivable (0120-0150)	(203,837)			(203,837)	
0055 Advances to Other Funds (0160)					
0056 (Inc) Dec in Inventories (0170)	(88,284)			(88,284)	
0057 (Inc) Dec in Prepaid Expenses (0180)					
0058 (Inc) Dec in Other Current or Noncurrent Assets					
0064 Deferred Outflows (0910)	(96,175)			(96,175)	
0059 Inc (Dec) in Accounts Payable (0400-0450)	(110,728)			(110,728)	
0060 Inc (Dec) in Accrued Salaries/Benefits (0461)					
0065 Inc (Dec) in Net Pension Liabilities (0570)	(486,531)			(486,531)	
0066 Inc (Dec) in Other Postemp Benefit Oblig (0560)	21,967			21,967	
0061 Inc (Dec) in Payroll Deductions/Withholding (0462)					
0062 Inc (Dec) in Unearned Revenue (0480)	(44,466)			(44,466)	
0063 Inc (Dec) in Other Current or Noncurrent Liabilities					
0067 Deferred Inflows (0950)	439,678			439,678	
Total Adjustments	(\$320,793)			(\$320,793)	
Cash Provided By (Used for) Total	(\$3,214,868)			(\$3,214,868)	

**COMBINED STATEMENT OF CASH FLOWS
SCHEDULE OF NONCASH INVESTING, CAPITAL, AND FINANCING ACTIVITIES**

Explanation of Transaction and Balance Sheet Effect	Amount
Total	

LEA : 123464502 Lower Merion SD

Printed 11/22/2022 3:08:22 PM

Amounts Expressed in Whole Dollars	<u>Private Purpose Trust</u> <u>(71)</u>	<u>Investment Trust</u> <u>(72)</u>	<u>Pension Trust</u> <u>(73)</u>	<u>Student Activity Custodial</u> <u>(81)</u>
Assets And Deferred Outflows Of Resources				
Assets				
0100 Cash and Cash Equivalents				
0110 Investments	128,851		342,048	510,555
0130 Due From Other Funds				3,644
0140 Due from Other Governments, Primary Government and Component Units				
0150 Other Receivables				
0170 Inventories				
0180 Prepaid Expenses (Expenditures)				
0190 Other Current Assets				
0220 Buildings and Building Improvements (Net)				
0230 Machinery, Equipment and Furniture (Net)				
Total Assets	\$128,851		\$342,048	\$514,199
0910 Deferred Outflows of Resources				
Total Assets And Deferred Outflows Of Resources	\$128,851		\$342,048	\$514,199

LEA : 123464502 Lower Merion SD

Printed 11/22/2022 3:08:22 PM

Amounts Expressed in Whole Dollars	<u>Other Custodial</u> <u>(89)</u>	<u>Fiduciary Component Units</u> <u>(98)</u>	<u>Total Fiduciary Funds</u>
Assets And Deferred Outflows Of Resources			
Assets			
0100 Cash and Cash Equivalents			
0110 Investments			981,454
0130 Due From Other Funds			3,644
0140 Due from Other Governments, Primary Government and Component Units			
0150 Other Receivables			
0170 Inventories			
0180 Prepaid Expenses (Expenditures)			
0190 Other Current Assets			
0220 Buildings and Building Improvements (Net)			
0230 Machinery, Equipment and Furniture (Net)			
Total Assets			\$985,098
0910 Deferred Outflows of Resources			
Total Assets And Deferred Outflows Of Resources			\$985,098

LEA : 123464502 Lower Merion SD

Printed 11/22/2022 3:08:22 PM

Amounts Expressed in Whole Dollars	<u>Private Purpose Trust</u> (71)	<u>Investment Trust</u> (72)	<u>Pension Trust</u> (73)	<u>Student Activity Custodial</u> (81)
Liabilities, Deferred Inflows Of Resources And Net Position				
Liabilities				
0400 Due to Other Funds				53,160
0410 Due to Other Governments, Primary Government and Component Units				
0420 Accounts Payable				
0430 Contracts Payable				
0450 Short-Term Payables				
0460 Payroll Accruals and Withholdings				
0480 Unearned Revenues				
0490 Other Current Liabilities				
Total Liabilities				\$53,160
0950 Deferred Inflows of Resources				
Net Position				
0791 Net Investment in Capital Assets				
0009 Restricted Net Position (0792 – 0798)	128,851		342,048	461,039
0799 Unrestricted Net Position				
Total Net Position	\$128,851		\$342,048	\$461,039
Total Liabilities, Deferred Inflows Of Resources And Net Position	\$128,851		\$342,048	\$514,199

LEA : 123464502 Lower Merion SD

Printed 11/22/2022 3:08:22 PM

Amounts Expressed in Whole Dollars

Other Custodial
(89)

Fiduciary Component Units
(98)

Total Fiduciary Funds

Liabilities, Deferred Inflows Of Resources And Net Position

Liabilities

0400 Due to Other Funds			53,160
0410 Due to Other Governments, Primary Government and Component Units			
0420 Accounts Payable			
0430 Contracts Payable			
0450 Short-Term Payables			
0460 Payroll Accruals and Withholdings			
0480 Unearned Revenues			
0490 Other Current Liabilities			

Total Liabilities **\$53,160**

0950 Deferred Inflows of Resources

Net Position

0791 Net Investment in Capital Assets			
0009 Restricted Net Position (0792 – 0798)			931,938
0799 Unrestricted Net Position			

Total Net Position **\$931,938**

Total Liabilities, Deferred Inflows Of Resources And Net Position **\$985,098**

Amounts Expressed in Whole Dollars	<u>Private Purpose Trust</u> <u>(71)</u>	<u>Investment Trust</u> <u>(72)</u>	<u>Pension Trust</u> <u>(73)</u>	<u>Student Activity</u> <u>Custodial</u> <u>(81)</u>	<u>Other Custodial</u> <u>(89)</u>	<u>Fiduciary Component</u> <u>Units</u> <u>(98)</u>
Additions						
0091 Gifts and Contributions				891,563		
0095 Net Investment Earnings	12		458	552		
0092 Other Additions						
Deductions						
0093 Scholarships Awarded	1,000					
0094 Other Deductions			68,775	841,805		
Change In Net Position	(\$988)		(\$68,317)	\$50,310		
0006 Net Position – Beginning of Fiscal Year	129,839		410,365	410,729		
0007 Net Position Held in Trust for Pension Benefits						
Net Position - End of Fiscal Year	\$128,851		\$342,048	\$461,039		

Amounts Expressed in Whole Dollars	<u>Total Fiduciary Funds</u>
Additions	
0091 Gifts and Contributions	891,563
0095 Net Investment Earnings	1,022
0092 Other Additions	
Deductions	
0093 Scholarships Awarded	1,000
0094 Other Deductions	910,580
Change in Net Position	(\$18,995)
0006 Net Position – Beginning of Fiscal Year	950,933
0007 Net Position Held in Trust for Pension Benefits	
Net Position - End of Fiscal Year	\$931,938

	<u>Revenue Reported In Current Year</u>	<u>Current Year Tax Accrual</u>	<u>Prior Year Tax Accrual</u>	<u>Taxes Collected In Current Year</u>
<u>Revenue from Local Sources</u>				
6111 Current Real Estate Taxes	235,892,784.85			235,892,784.85
6112 Interim Real Estate Taxes	1,629,946.39	2,238.67	686.15	1,628,393.87
6113 Public Utility Realty Taxes	231,909.31			231,909.31
6143 Current Act 511 Local Services Taxes	214,717.49	42,698.52	44,351.40	216,370.37
6153 Current Act 511 Real Estate Transfer Taxes	7,646,890.69	785,801.21	489,177.00	7,350,266.48
6411 Delinquent Real Estate Taxes	5,152,864.95	322,554.97	202,829.91	5,033,139.89
6500 Earnings on Investments	183,200.57			
6700 Revenues from LEA Activities	34,002.00			
6832 Federal IDEA Revenue Received as Pass Through	1,642,680.47			
6833 Federal ARRA IDEA Revenue Received as Pass Through	349,800.32			
6910 Rentals	225,866.41			
6920 Contributions and Donations from Private Sources	2,184.50			
6942 Summer School Tuition	55,759.31			
6944 Receipts from Other LEAs in Pennsylvania - Education	776.29			
6980 Revenue from Community Services Activities	47,827.50			
6991 Refunds of a Prior Year Expenditure	244,934.07			
6999 Other Revenues Not Specified Above	2,847.79			
TOTAL Revenue from Local Sources	\$253,558,992.91	\$1,153,293.37	\$737,044.46	\$250,352,864.77

**Revenue Reported
In Current Year**

Revenue from State Sources

7111 Basic Education Funding-Formula	4,463,021.44		
7112 Basic Education Funding-Social Security	5,046,218.71		
7160 Tuition for Orphans Subsidy	188,206.90		
7271 Special Education funds for School-Aged Pupils	3,286,037.47		
7311 Pupil Transportation Subsidy	1,115,785.83		
7312 Nonpublic and Charter School Pupil Transportation Subsidy	329,945.00		
7320 Rental and Sinking Fund Payments / Building Reimbursement Subsidy	280,976.25		
7330 Health Services (Medical, Dental, Nurse, Act 25)	244,877.43		
7340 State Property Tax Reduction Allocation	3,473,793.65		
7505 Ready to Learn Block Grant	240,611.00		
7820 State Share of Retirement Contributions	23,717,509.60		
TOTAL Revenue from State Sources	\$42,386,983.28		

	Revenue Reported In Current Year			
Revenue from Federal Sources				
8514 NCLB, Title I - Improving the Academic Achievement of the Disadvantaged	298,794.59			
8515 NCLB, Title II - Preparing, Training and Recruiting High Quality Teachers and Principals	128,803.46			
8516 NCLB, Title III - Language Instruction for Limited English Proficient and Immigrant Students	63,006.10			
8517 NCLB, Title IV - 21St Century Schools	21,175.17			
8690 Other Restricted Federal Grants-in-Aid Through the Commonwealth of PA	750.00			
8744 ARP ESSER - Elementary and Secondary School Emergency Relief Fund	520,547.83			
8751 ARP ESSER Learning Loss	63,054.00			
8752 ARP ESSER Summer Programs	24,244.00			
8753 ARP ESSER Afterschool Programs	24,244.00			
8810 School-Based Access Medicaid Reimbursement Program (SBAP) Reimbursements (Access)	1,668,301.46			
8820 Medical Assistance Reimbursement for Administrative Claiming (Quarterly) Program	56,920.89			
TOTAL Revenue from Federal Sources	\$2,869,841.50			
TOTAL FROM ALL SOURCES	\$298,815,817.69	\$1,153,293.37	\$737,044.46	\$250,352,864.77

LEA : 123464502 Lower Merion SD

Printed 11/22/2022 3:08:27 PM

	<u>General Fund (10)</u>	<u>Student Sponsored Activity Fund (21)</u>	<u>Public Purpose Trust (27)</u>	<u>Other Compt Approved (28)</u>	<u>Athletic / Activity (29)</u>	<u>Capital Reserve (690, 1850) (31)</u>
6000 Revenue from Local Sources						
6111 Current Real Estate Taxes	235,892,784.85					
6112 Interim Real Estate Taxes	1,629,946.39					
6113 Public Utility Realty Taxes	231,909.31					
6143 Current Act 511 Local Services Taxes	214,717.49					
6153 Current Act 511 Real Estate Transfer Taxes	7,646,890.69					
6411 Delinquent Real Estate Taxes	5,152,864.95					
6500 Earnings on Investments	183,200.57					
6700 Revenues from LEA Activities	34,002.00					
6832 Federal IDEA Revenue Received as Pass Through	1,642,680.47					
6833 Federal ARRA IDEA Revenue Received as Pass Through	349,800.32					
6910 Rentals	225,866.41					
6920 Contributions and Donations from Private Sources	2,184.50					
6942 Summer School Tuition	55,759.31					
6944 Receipts from Other LEAs in Pennsylvania - Education	776.29					
6980 Revenue from Community Services Activities	47,827.50					
6991 Refunds of a Prior Year Expenditure	244,934.07					
6999 Other Revenues Not Specified Above	2,847.79					
6000 Total Revenue from Local Sources	\$253,558,992.91					
7000 Revenue from State Sources						
7111 Basic Education Funding-Formula	4,463,021.44					
7112 Basic Education Funding-Social Security	5,046,218.71					
7160 Tuition for Orphans Subsidy	188,206.90					
7271 Special Education funds for School-Aged Pupils	3,286,037.47					
7311 Pupil Transportation Subsidy	1,115,785.83					
7312 Nonpublic and Charter School Pupil Transportation Subsidy	329,945.00					
7320 Rental and Sinking Fund Payments / Building Reimbursement Subsidy	280,976.25					
7330 Health Services (Medical, Dental, Nurse, Act 25)	244,877.43					
7340 State Property Tax Reduction Allocation	3,473,793.65					
7505 Ready to Learn Block Grant	240,611.00					
7820 State Share of Retirement Contributions	23,717,509.60					
7000 Total Revenue from State Sources	\$42,386,983.28					
8000 Revenue from Federal Sources						
8514 NCLB, Title I - Improving the Academic Achievement of the Disadvantaged	298,794.59					
8515 NCLB, Title II - Preparing, Training and Recruiting High Quality Teachers and Principals	128,803.46					

LEA : 123464502 Lower Merion SD

Printed 11/22/2022 3:08:27 PM

	<u>Capital Reserve</u> <u>(1431) (32)</u>	<u>Other Capital</u> <u>Projects Fund (39)</u>	<u>Debt Service (40)</u>	<u>Permanent (90)</u>	<u>Total</u>
6000 Revenue from Local Sources					
6111 Current Real Estate Taxes					235,892,784.85
6112 Interim Real Estate Taxes					1,629,946.39
6113 Public Utility Realty Taxes					231,909.31
6143 Current Act 511 Local Services Taxes					214,717.49
6153 Current Act 511 Real Estate Transfer Taxes					7,646,890.69
6411 Delinquent Real Estate Taxes					5,152,864.95
6500 Earnings on Investments	10,331.79	50,223.38	7,219.49		250,975.23
6700 Revenues from LEA Activities					34,002.00
6832 Federal IDEA Revenue Received as Pass Through					1,642,680.47
6833 Federal ARRA IDEA Revenue Received as Pass Through					349,800.32
6910 Rentals					225,866.41
6920 Contributions and Donations from Private Sources					2,184.50
6942 Summer School Tuition					55,759.31
6944 Receipts from Other LEAs in Pennsylvania - Education					776.29
6980 Revenue from Community Services Activities					47,827.50
6991 Refunds of a Prior Year Expenditure					244,934.07
6999 Other Revenues Not Specified Above					2,847.79
6000 Total Revenue from Local Sources	\$10,331.79	\$50,223.38	\$7,219.49		\$253,626,767.57
7000 Revenue from State Sources					
7111 Basic Education Funding-Formula					4,463,021.44
7112 Basic Education Funding-Social Security					5,046,218.71
7160 Tuition for Orphans Subsidy					188,206.90
7271 Special Education funds for School-Aged Pupils					3,286,037.47
7311 Pupil Transportation Subsidy					1,115,785.83
7312 Nonpublic and Charter School Pupil Transportation Subsidy					329,945.00
7320 Rental and Sinking Fund Payments / Building Reimbursement Subsidy					280,976.25
7330 Health Services (Medical, Dental, Nurse, Act 25)					244,877.43
7340 State Property Tax Reduction Allocation					3,473,793.65
7505 Ready to Learn Block Grant					240,611.00
7820 State Share of Retirement Contributions					23,717,509.60
7000 Total Revenue from State Sources					\$42,386,983.28
8000 Revenue from Federal Sources					
8514 NCLB, Title I - Improving the Academic Achievement of the Disadvantaged					298,794.59
8515 NCLB, Title II - Preparing, Training and Recruiting High Quality Teachers and Principals					128,803.46

LEA : 123464502 Lower Merion SD

Printed 11/22/2022 3:08:27 PM

	<u>General Fund (10)</u>	<u>Student Sponsored Activity Fund (21)</u>	<u>Public Purpose Trust (27)</u>	<u>Other Compt Approved (28)</u>	<u>Athletic / Activity (29)</u>	<u>Capital Reserve (690, 1850) (31)</u>
8000 Revenue from Federal Sources						
8516 NCLB, Title III - Language Instruction for Limited English Proficient and Immigrant Students	63,006.10					
8517 NCLB, Title IV - 21st Century Schools	21,175.17					
8690 Other Restricted Federal Grants-in-Aid Through the Commonwealth of PA	750.00					
8744 ARP ESSER - Elementary and Secondary School Emergency Relief Fund	520,547.83					
8751 ARP ESSER Learning Loss	63,054.00					
8752 ARP ESSER Summer Programs	24,244.00					
8753 ARP ESSER Afterschool Programs	24,244.00					
8810 School-Based Access Medicaid Reimbursement Program (SBAP) Reimbursements (Access)	1,668,301.46					
8820 Medical Assistance Reimbursement for Administrative Claiming (Quarterly) Program	56,920.89					
8000 Total Revenue from Federal Sources	\$2,869,841.50					
9000 Other Financing Sources						
9220 Leases						
9310 General Fund Transfers						
9000 Total Other Financing Sources						
Total From All Sources	\$298,815,817.69					

LEA : 123464502 Lower Merion SD

Printed 11/22/2022 3:08:27 PM

	<u>Capital Reserve</u> <u>(1431) (32)</u>	<u>Other Capital</u> <u>Projects Fund (39)</u>	<u>Debt Service (40)</u>	<u>Permanent (90)</u>	<u>Total</u>
8000 Revenue from Federal Sources					
8516 NCLB, Title III - Language Instruction for Limited English Proficient and Immigrant Students					63,006.10
8517 NCLB, Title IV - 21st Century Schools					21,175.17
8690 Other Restricted Federal Grants-in-Aid Through the Commonwealth of PA					750.00
8744 ARP ESSER - Elementary and Secondary School Emergency Relief Fund					520,547.83
8751 ARP ESSER Learning Loss					63,054.00
8752 ARP ESSER Summer Programs					24,244.00
8753 ARP ESSER Afterschool Programs					24,244.00
8810 School-Based Access Medicaid Reimbursement Program (SBAP) Reimbursements (Access)					1,668,301.46
8820 Medical Assistance Reimbursement for Administrative Claiming (Quarterly) Program					56,920.89
8000 Total Revenue from Federal Sources					\$2,869,841.50
9000 Other Financing Sources					
9220 Leases		438,265.00			438,265.00
9310 General Fund Transfers	6,889,178.80				6,889,178.80
9000 Total Other Financing Sources	\$6,889,178.80	\$438,265.00			\$7,327,443.80
Total From All Sources	\$6,899,510.59	\$488,488.38	\$7,219.49		\$306,211,036.15

	<u>General Fund (10)</u>	<u>Student Sponsored Activity Fund (21)</u>	<u>Public Purpose Trust (27)</u>	<u>Other Compt Approved (28)</u>	<u>Athletic / Activity (29)</u>	<u>Capital Reserve (690. 1850) (31)</u>
Revenue from Local Sources	253,558,992.91					
Revenue from State Sources	42,386,983.28					
Revenue from Federal Sources	2,869,841.50					
Other Financing Sources						
Total From All Sources	\$298,815,817.69					

	<u>Capital Reserve (1431)</u> <u>(32)</u>	<u>Other Capital Projects</u> <u>Fund (39)</u>	<u>Debt Service (40)</u>	<u>Permanent (90)</u>	<u>Total</u>
Revenue from Local Sources	10,331.79	50,223.38	7,219.49		253,626,767.57
Revenue from State Sources					42,386,983.28
Revenue from Federal Sources					2,869,841.50
Other Financing Sources	6,889,178.80	438,265.00			7,327,443.80
Total From All Sources	\$6,899,510.59	\$488,488.38	\$7,219.49		\$306,211,036.15

LEA : 123464502 Lower Merion SD

Printed 11/22/2022 3:08:33 PM

General Fund (10)

	<u>Total</u>
1000 Instruction	
100 Personnel Services – Salaries	
100 Personnel Services – Salaries	92,182,021.43
Total Personnel Services – Salaries	\$92,182,021.43
200 Personnel Services – Employee Benefits	
210 Group Insurance – Contracted Provider	428,280.09
220 Social Security Contributions	6,936,140.95
230 PSERS Retirement Contributions	32,397,386.46
250 Unemployment Compensation	14,590.13
260 Workers’ Compensation	864,392.10
270 Group Insurance – Self-Insurance	18,958,183.28
280 Other Post-Employment Benefits (OPEB)	323,250.00
Total Personnel Services – Employee Benefits	\$59,922,223.01
300 Purchased Professional and Technical Services	
322 Professional Educational Services – Ius	1,862,828.74
323 Professional Educational Services – Other Educational Agencies	1,194,793.17
329 Professional Educational Services – Other	709,572.40
330 Other Professional Services	334,222.71
Total Purchased Professional and Technical Services	\$4,101,417.02
400 Purchased Property Services	
430 Repairs and Maintenance Services	22,967.09
440 Rentals	21,633.58
Total Purchased Property Services	\$44,600.67
500 Other Purchased Services	
510 Student Transportation Services	25,796.74
530 Communications	1,246.34
561 Tuition To Other School Districts Within the State	27,264.52
562 Tuition To Pennsylvania Charter Schools	2,253,930.42
563 Tuition To Nonpublic Schools	2,254,576.43
564 Tuition To Career and Technology Centers	671,452.00
567 Tuition To Approved Private Schools (APS) and PA Chartered Schools for the Deaf and Blind	2,004,698.11
569 Tuition – Other	43,075.00
580 Travel	3,242.65
594 IU Payment By Withholding for Institutionalized Children’s Programs – Special Classes	1,672.49
Total Other Purchased Services	\$7,286,954.70
600 Supplies	
610 General Supplies	1,384,288.71
630 Food	8,674.46
640 Books and Periodicals	458,350.83
650 Supplies & Fees – Technology Related	4,051,779.66
Total Supplies	\$5,903,093.66
800 Other Objects	
810 Dues and Fees	41,081.13

LEA : 123464502 Lower Merion SD

Printed 11/22/2022 3:08:33 PM

General Fund (10)

1000 Instruction	<u>Total</u>
Total Other Objects	\$41,081.13
Total 1000 Instruction	\$169,481,391.62

General Fund (10)

1100 Regular Programs – Elementary / Secondary

	<u>Elementary</u>	<u>Secondary</u>	<u>Federal</u>	<u>Total</u>
100 Personnel Services – Salaries				
100 Personnel Services – Salaries	30,749,626.97	35,162,988.31	354,857.93	66,267,473.21
Total Personnel Services – Salaries	\$30,749,626.97	\$35,162,988.31	\$354,857.93	\$66,267,473.21
200 Personnel Services – Employee Benefits				
210 Group Insurance – Contracted Provider	143,343.69	156,936.51		300,280.20
220 Social Security Contributions	2,321,310.12	2,648,721.95	11,881.92	4,981,913.99
230 PSERS Retirement Contributions	10,853,219.11	12,381,830.27	55,026.87	23,290,076.25
250 Unemployment Compensation	5,275.78	6,180.60		11,456.38
260 Workers' Compensation	312,562.57	366,169.19		678,731.76
270 Group Insurance – Self-Insurance	5,972,170.81	6,287,116.17		12,259,286.98
280 Other Post-Employment Benefits (OPEB)	134,693.95	174,481.05		309,175.00
Total Personnel Services – Employee Benefits	\$19,742,576.03	\$22,021,435.74	\$66,908.79	\$41,830,920.56
300 Purchased Professional and Technical Services				
322 Professional Educational Services – Ius			167,479.33	167,479.33
323 Professional Educational Services – Other Educational Agencies	113,796.25	86,801.52		200,597.77
329 Professional Educational Services – Other	327,616.97	248,391.69		576,008.66
330 Other Professional Services	206.25	102,956.52	227,633.94	330,796.71
Total Purchased Professional and Technical Services	\$441,619.47	\$438,149.73	\$395,113.27	\$1,274,882.47
400 Purchased Property Services				
430 Repairs and Maintenance Services	22,397.09			22,397.09
440 Rentals	4,885.86	16,747.72		21,633.58
Total Purchased Property Services	\$27,282.95	\$16,747.72		\$44,030.67
500 Other Purchased Services				
510 Student Transportation Services	15,320.24	6,476.50		21,796.74
530 Communications		1,097.24		1,097.24
562 Tuition To Pennsylvania Charter Schools	646,185.62	336,150.01		982,335.63
569 Tuition – Other		37,975.00		37,975.00
580 Travel	166.38	2,142.56		2,308.94
Total Other Purchased Services	\$661,672.24	\$383,841.31		\$1,045,513.55
600 Supplies				
610 General Supplies	547,181.27	736,064.07	2,029.79	1,285,275.13
630 Food	1,558.00	1,078.26		2,636.26
640 Books and Periodicals	313,081.99	122,039.83	8,786.98	443,908.80
650 Supplies & Fees – Technology Related	796,656.33	3,098,620.00		3,895,276.33
Total Supplies	\$1,658,477.59	\$3,957,802.16	\$10,816.77	\$5,627,096.52
800 Other Objects				
810 Dues and Fees	2,759.48	37,446.65		40,206.13
Total Other Objects	\$2,759.48	\$37,446.65		\$40,206.13
Total 1100 Regular Programs – Elementary / Secondary	\$53,284,014.73	\$62,018,411.62	\$827,696.76	\$116,130,123.11

General Fund (10)

1110 Regular Programs

	<u>Elementary</u>	<u>Secondary</u>	<u>Federal</u>	<u>Total</u>
100 Personnel Services – Salaries				
100 Personnel Services – Salaries	30,749,626.97	35,162,988.31	85,761.93	65,998,377.21
Total Personnel Services – Salaries	\$30,749,626.97	\$35,162,988.31	\$85,761.93	\$65,998,377.21
200 Personnel Services – Employee Benefits				
210 Group Insurance – Contracted Provider	143,343.69	156,936.51		300,280.20
220 Social Security Contributions	2,321,310.12	2,648,721.95	1,754.36	4,971,786.43
230 PSERS Retirement Contributions	10,853,219.11	12,381,830.27	8,012.47	23,243,061.85
250 Unemployment Compensation	5,275.78	6,180.60		11,456.38
260 Workers' Compensation	312,562.57	366,169.19		678,731.76
270 Group Insurance – Self-Insurance	5,972,170.81	6,287,116.17		12,259,286.98
280 Other Post-Employment Benefits (OPEB)	134,693.95	174,481.05		309,175.00
Total Personnel Services – Employee Benefits	\$19,742,576.03	\$22,021,435.74	\$9,766.83	\$41,773,778.60
300 Purchased Professional and Technical Services				
322 Professional Educational Services – Ius			167,479.33	167,479.33
323 Professional Educational Services – Other Educational Agencies	113,796.25	86,801.52		200,597.77
329 Professional Educational Services – Other	327,616.97	248,391.69		576,008.66
330 Other Professional Services	206.25	102,956.52	227,633.94	330,796.71
Total Purchased Professional and Technical Services	\$441,619.47	\$438,149.73	\$395,113.27	\$1,274,882.47
400 Purchased Property Services				
430 Repairs and Maintenance Services	22,397.09			22,397.09
440 Rentals	4,885.86	16,747.72		21,633.58
Total Purchased Property Services	\$27,282.95	\$16,747.72		\$44,030.67
500 Other Purchased Services				
510 Student Transportation Services	15,320.24	6,476.50		21,796.74
530 Communications		1,097.24		1,097.24
562 Tuition To Pennsylvania Charter Schools	646,185.62	336,150.01		982,335.63
569 Tuition – Other		37,975.00		37,975.00
580 Travel	166.38	2,142.56		2,308.94
Total Other Purchased Services	\$661,672.24	\$383,841.31		\$1,045,513.55
600 Supplies				
610 General Supplies	547,181.27	736,064.07	2,029.79	1,285,275.13
630 Food	1,558.00	1,078.26		2,636.26
640 Books and Periodicals	313,081.99	122,039.83	8,716.00	443,837.82
650 Supplies & Fees – Technology Related	796,656.33	3,098,620.00		3,895,276.33
Total Supplies	\$1,658,477.59	\$3,957,802.16	\$10,745.79	\$5,627,025.54
800 Other Objects				
810 Dues and Fees	2,759.48	37,446.65		40,206.13
Total Other Objects	\$2,759.48	\$37,446.65		\$40,206.13
Total 1110 Regular Programs	\$53,284,014.73	\$62,018,411.62	\$501,387.82	\$115,803,814.17

LEA : 123464502 Lower Merion SD

Printed 11/22/2022 3:08:33 PM

General Fund (10)

	<u>Elementary</u>	<u>Secondary</u>	<u>Federal</u>	<u>Total</u>
1190 Federally-Funded Regular Programs				
100 Personnel Services – Salaries				
100 Personnel Services – Salaries			269,096.00	269,096.00
Total Personnel Services – Salaries			\$269,096.00	\$269,096.00
200 Personnel Services – Employee Benefits				
220 Social Security Contributions			10,127.56	10,127.56
230 PSERS Retirement Contributions			47,014.40	47,014.40
Total Personnel Services – Employee Benefits			\$57,141.96	\$57,141.96
600 Supplies				
640 Books and Periodicals			70.98	70.98
Total Supplies			\$70.98	\$70.98
Total 1190 Federally-Funded Regular Programs			\$326,308.94	\$326,308.94

General Fund (10)

1200 Special Programs – Elementary / Secondary

	<u>Elementary</u>	<u>Secondary</u>	<u>Federal</u>	<u>Total</u>
100 Personnel Services – Salaries				
100 Personnel Services – Salaries	13,420,266.52	11,295,837.65	574,893.49	25,290,997.66
Total Personnel Services – Salaries	\$13,420,266.52	\$11,295,837.65	\$574,893.49	\$25,290,997.66
200 Personnel Services – Employee Benefits				
210 Group Insurance – Contracted Provider	68,819.63	58,929.69		127,749.32
220 Social Security Contributions	1,025,438.77	860,151.42	21,389.98	1,906,980.17
230 PSERS Retirement Contributions	4,783,330.54	4,011,425.58	99,739.92	8,894,496.04
250 Unemployment Compensation	1,597.28	1,528.33		3,125.61
260 Workers' Compensation	94,630.80	90,547.13		185,177.93
270 Group Insurance – Self-Insurance	3,680,384.15	3,007,443.51		6,687,827.66
280 Other Post-Employment Benefits (OPEB)	13,450.00	625.00		14,075.00
Total Personnel Services – Employee Benefits	\$9,667,651.17	\$8,030,650.66	\$121,129.90	\$17,819,431.73
300 Purchased Professional and Technical Services				
322 Professional Educational Services – Ius	14,629.65	92,544.67	1,564,896.14	1,672,070.46
323 Professional Educational Services – Other Educational Agencies	208,979.98	177,624.15	577,607.01	964,211.14
329 Professional Educational Services – Other	89,661.27	40,307.14		129,968.41
330 Other Professional Services	1,696.00			1,696.00
Total Purchased Professional and Technical Services	\$314,966.90	\$310,475.96	\$2,142,503.15	\$2,767,946.01
400 Purchased Property Services				
430 Repairs and Maintenance Services		570.00		570.00
Total Purchased Property Services		\$570.00		\$570.00
500 Other Purchased Services				
530 Communications	149.10			149.10
561 Tuition To Other School Districts Within the State		26,640.34		26,640.34
562 Tuition To Pennsylvania Charter Schools	581,130.48	690,464.31		1,271,594.79
563 Tuition To Nonpublic Schools	189,733.25	2,064,843.18		2,254,576.43
567 Tuition To Approved Private Schools (APS) and PA Chartered Schools for the Deaf and Blind	603,243.76	1,401,454.35		2,004,698.11
580 Travel	127.78	805.93		933.71
594 IU Payment By Withholding for Institutionalized Children's Programs – Special Classes		1,672.49		1,672.49
Total Other Purchased Services	\$1,374,384.37	\$4,185,880.60		\$5,560,264.97
600 Supplies				
610 General Supplies	14,189.53	17,837.51		32,027.04
640 Books and Periodicals	3,693.02	5,941.04		9,634.06
650 Supplies & Fees – Technology Related	58,084.41	67,337.00	7,276.90	132,698.31
Total Supplies	\$75,966.96	\$91,115.55	\$7,276.90	\$174,359.41
Total 1200 Special Programs – Elementary / Secondary	\$24,853,235.92	\$23,914,530.42	\$2,845,803.44	\$51,613,569.78

LEA : 123464502 Lower Merion SD

Printed 11/22/2022 3:08:33 PM

General Fund (10)

1210 Life Skills Support

	<u>Elementary</u>	<u>Secondary</u>	<u>Federal</u>	<u>Total</u>
100 Personnel Services – Salaries				
100 Personnel Services – Salaries	399,807.56	425,425.30		825,232.86
Total Personnel Services – Salaries	\$399,807.56	\$425,425.30		\$825,232.86
200 Personnel Services – Employee Benefits				
210 Group Insurance – Contracted Provider	1,722.91	2,598.09		4,321.00
220 Social Security Contributions	29,994.63	31,703.01		61,697.64
230 PSERS Retirement Contributions	139,161.87	149,102.52		288,264.39
250 Unemployment Compensation	54.50	46.84		101.34
260 Workers' Compensation	3,229.03	2,775.39		6,004.42
270 Group Insurance – Self-Insurance	78,427.74	145,143.83		223,571.57
Total Personnel Services – Employee Benefits	\$252,590.68	\$331,369.68		\$583,960.36
300 Purchased Professional and Technical Services				
322 Professional Educational Services – Ius		835.96	188,214.86	189,050.82
323 Professional Educational Services – Other Educational Agencies		4,326.86		4,326.86
329 Professional Educational Services – Other	1,429.38	2,261.71		3,691.09
Total Purchased Professional and Technical Services	\$1,429.38	\$7,424.53	\$188,214.86	\$197,068.77
500 Other Purchased Services				
561 Tuition To Other School Districts Within the State		4,340.35		4,340.35
562 Tuition To Pennsylvania Charter Schools		3,181.50		3,181.50
563 Tuition To Nonpublic Schools		94,464.93		94,464.93
567 Tuition To Approved Private Schools (APS) and PA Chartered Schools for the Deaf and Blind	61,620.60	220,032.96		281,653.56
580 Travel		805.93		805.93
Total Other Purchased Services	\$61,620.60	\$322,825.67		\$384,446.27
600 Supplies				
610 General Supplies	1,895.39	988.05		2,883.44
640 Books and Periodicals	269.07			269.07
650 Supplies & Fees – Technology Related	11,349.63	12,663.47		24,013.10
Total Supplies	\$13,514.09	\$13,651.52		\$27,165.61
Total 1210 Life Skills Support	\$728,962.31	\$1,100,696.70	\$188,214.86	\$2,017,873.87

LEA : 123464502 Lower Merion SD

Printed 11/22/2022 3:08:33 PM

General Fund (10)

1220 Sensory Support

	<u>Elementary</u>	<u>Secondary</u>	<u>Federal</u>	<u>Total</u>
100 Personnel Services – Salaries				
100 Personnel Services – Salaries	1,347,278.69	637,963.71		1,985,242.40
Total Personnel Services – Salaries	\$1,347,278.69	\$637,963.71		\$1,985,242.40
200 Personnel Services – Employee Benefits				
210 Group Insurance – Contracted Provider	6,184.42	3,574.96		9,759.38
220 Social Security Contributions	101,862.56	48,103.39		149,965.95
230 PSERS Retirement Contributions	491,251.65	223,597.17		714,848.82
250 Unemployment Compensation	224.30	111.90		336.20
260 Workers' Compensation	13,288.27	6,630.03		19,918.30
270 Group Insurance – Self-Insurance	264,566.48	161,368.51		425,934.99
Total Personnel Services – Employee Benefits	\$877,377.68	\$443,385.96		\$1,320,763.64
300 Purchased Professional and Technical Services				
322 Professional Educational Services – Ius		26.25	425,677.63	425,703.88
323 Professional Educational Services – Other Educational Agencies			41,466.42	41,466.42
Total Purchased Professional and Technical Services		\$26.25	\$467,144.05	\$467,170.30
500 Other Purchased Services				
563 Tuition To Nonpublic Schools		77,367.50		77,367.50
567 Tuition To Approved Private Schools (APS) and PA Chartered Schools for the Deaf and Blind	15,636.25	2,263.00		17,899.25
580 Travel	26.26			26.26
Total Other Purchased Services	\$15,662.51	\$79,630.50		\$95,293.01
600 Supplies				
610 General Supplies	1,939.22	276.10		2,215.32
640 Books and Periodicals	659.95	1,472.63		2,132.58
650 Supplies & Fees – Technology Related	13,164.08	15,411.03	7,276.90	35,852.01
Total Supplies	\$15,763.25	\$17,159.76	\$7,276.90	\$40,199.91
Total 1220 Sensory Support	\$2,256,082.13	\$1,178,166.18	\$474,420.95	\$3,908,669.26

General Fund (10)

1230 Emotional Support

	<u>Elementary</u>	<u>Secondary</u>	<u>Federal</u>	<u>Total</u>
100 Personnel Services – Salaries				
100 Personnel Services – Salaries	5,098,337.18	3,847,625.15	387,741.64	9,333,703.97
Total Personnel Services – Salaries	\$5,098,337.18	\$3,847,625.15	\$387,741.64	\$9,333,703.97
200 Personnel Services – Employee Benefits				
210 Group Insurance – Contracted Provider	26,404.26	18,346.72		44,750.98
220 Social Security Contributions	398,376.09	291,844.23	14,437.72	704,658.04
230 PSERS Retirement Contributions	1,853,502.19	1,368,753.69	67,042.65	3,289,298.53
250 Unemployment Compensation	527.37	495.00		1,022.37
260 Workers' Compensation	31,244.64	29,325.81		60,570.45
270 Group Insurance – Self-Insurance	1,497,031.62	922,550.03		2,419,581.65
280 Other Post-Employment Benefits (OPEB)	13,450.00	625.00		14,075.00
Total Personnel Services – Employee Benefits	\$3,820,536.17	\$2,631,940.48	\$81,480.37	\$6,533,957.02
300 Purchased Professional and Technical Services				
322 Professional Educational Services – Ius	13,520.19	79,756.78	690,704.24	783,981.21
323 Professional Educational Services – Other Educational Agencies	682.00	16,109.35		16,791.35
329 Professional Educational Services – Other	26,822.25	14,537.82		41,360.07
Total Purchased Professional and Technical Services	\$41,024.44	\$110,403.95	\$690,704.24	\$842,132.63
500 Other Purchased Services				
561 Tuition To Other School Districts Within the State		14,587.74		14,587.74
563 Tuition To Nonpublic Schools	75,462.00	1,293,432.47		1,368,894.47
567 Tuition To Approved Private Schools (APS) and PA Chartered Schools for the Deaf and Blind	377,268.70	665,112.55		1,042,381.25
Total Other Purchased Services	\$452,730.70	\$1,973,132.76		\$2,425,863.46
600 Supplies				
610 General Supplies	2,874.96	2,614.91		5,489.87
640 Books and Periodicals	401.03			401.03
650 Supplies & Fees – Technology Related	17,828.09	14,409.82		32,237.91
Total Supplies	\$21,104.08	\$17,024.73		\$38,128.81
Total 1230 Emotional Support	\$9,433,732.57	\$8,580,127.07	\$1,159,926.25	\$19,173,785.89

General Fund (10)

1240 Academic Support

	<u>Elementary</u>	<u>Secondary</u>	<u>Federal</u>	<u>Total</u>
100 Personnel Services – Salaries				
100 Personnel Services – Salaries	6,574,843.09	6,384,823.49	187,151.85	13,146,818.43
Total Personnel Services – Salaries	\$6,574,843.09	\$6,384,823.49	\$187,151.85	\$13,146,818.43
200 Personnel Services – Employee Benefits				
210 Group Insurance – Contracted Provider	34,508.04	34,409.92		68,917.96
220 Social Security Contributions	495,205.49	488,500.79	6,952.26	990,658.54
230 PSERS Retirement Contributions	2,299,414.83	2,269,972.20	32,697.27	4,602,084.30
250 Unemployment Compensation	791.11	874.59		1,665.70
260 Workers' Compensation	46,868.86	51,815.90		98,684.76
270 Group Insurance – Self-Insurance	1,840,358.31	1,778,381.14		3,618,739.45
Total Personnel Services – Employee Benefits	\$4,717,146.64	\$4,623,954.54	\$39,649.53	\$9,380,750.71
300 Purchased Professional and Technical Services				
322 Professional Educational Services – Ius		7,285.13	140,093.47	147,378.60
323 Professional Educational Services – Other Educational Agencies	65,730.88	113,688.82		179,419.70
329 Professional Educational Services – Other	61,409.64	23,507.61		84,917.25
330 Other Professional Services	1,696.00			1,696.00
Total Purchased Professional and Technical Services	\$128,836.52	\$144,481.56	\$140,093.47	\$413,411.55
400 Purchased Property Services				
430 Repairs and Maintenance Services		570.00		570.00
Total Purchased Property Services		\$570.00		\$570.00
500 Other Purchased Services				
530 Communications	149.10			149.10
561 Tuition To Other School Districts Within the State		7,712.25		7,712.25
562 Tuition To Pennsylvania Charter Schools	581,130.48	687,282.81		1,268,413.29
563 Tuition To Nonpublic Schools	114,271.25	599,578.28		713,849.53
580 Travel	101.52			101.52
Total Other Purchased Services	\$695,652.35	\$1,294,573.34		\$1,990,225.69
600 Supplies				
610 General Supplies	7,235.45	12,078.43		19,313.88
640 Books and Periodicals	2,362.97	4,468.41		6,831.38
650 Supplies & Fees – Technology Related	15,508.92	24,852.68		40,361.60
Total Supplies	\$25,107.34	\$41,399.52		\$66,506.86
Total 1240 Academic Support	\$12,141,585.94	\$12,489,802.45	\$366,894.85	\$24,998,283.24

General Fund (10)

	<u>Elementary</u>	<u>Secondary</u>	<u>Federal</u>	<u>Total</u>
1241 Learning Support – Public				
100 Personnel Services – Salaries				
100 Personnel Services – Salaries	5,410,736.13	5,026,990.67	187,151.85	10,624,878.65
Total Personnel Services – Salaries	\$5,410,736.13	\$5,026,990.67	\$187,151.85	\$10,624,878.65
200 Personnel Services – Employee Benefits				
210 Group Insurance – Contracted Provider	28,972.44	28,311.36		57,283.80
220 Social Security Contributions	407,523.53	386,061.88	6,952.26	800,537.67
230 PSERS Retirement Contributions	1,891,558.94	1,794,074.49	32,697.27	3,718,330.70
250 Unemployment Compensation	584.18	633.51		1,217.69
260 Workers' Compensation	34,609.40	37,533.16		72,142.56
270 Group Insurance – Self-Insurance	1,612,202.15	1,527,036.92		3,139,239.07
Total Personnel Services – Employee Benefits	\$3,975,450.64	\$3,773,651.32	\$39,649.53	\$7,788,751.49
300 Purchased Professional and Technical Services				
322 Professional Educational Services – Ius		7,285.13	140,093.47	147,378.60
323 Professional Educational Services – Other Educational Agencies	65,730.88	113,688.82		179,419.70
329 Professional Educational Services – Other	57,763.55	19,636.64		77,400.19
330 Other Professional Services	396.00			396.00
Total Purchased Professional and Technical Services	\$123,890.43	\$140,610.59	\$140,093.47	\$404,594.49
400 Purchased Property Services				
430 Repairs and Maintenance Services		570.00		570.00
Total Purchased Property Services		\$570.00		\$570.00
500 Other Purchased Services				
561 Tuition To Other School Districts Within the State		7,712.25		7,712.25
562 Tuition To Pennsylvania Charter Schools	581,130.48	687,282.81		1,268,413.29
563 Tuition To Nonpublic Schools	114,271.25	594,578.28		708,849.53
Total Other Purchased Services	\$695,401.73	\$1,289,573.34		\$1,984,975.07
600 Supplies				
610 General Supplies	6,954.45	12,078.43		19,032.88
640 Books and Periodicals	2,362.97	4,046.65		6,409.62
650 Supplies & Fees – Technology Related	15,508.92	20,502.68		36,011.60
Total Supplies	\$24,826.34	\$36,627.76		\$61,454.10
Total 1241 Learning Support – Public	\$10,230,305.27	\$10,268,023.68	\$366,894.85	\$20,865,223.80

LEA : 123464502 Lower Merion SD

Printed 11/22/2022 3:08:33 PM

General Fund (10)

1242 Learning Support – PRRI

500 Other Purchased Services

563 Tuition To Nonpublic Schools

Total Other Purchased Services

Total 1242 Learning Support – PRRI

Elementary

Secondary

Federal

Total

5,000.00

5,000.00

\$5,000.00

\$5,000.00

\$5,000.00

\$5,000.00

LEA : 123464502 Lower Merion SD

Printed 11/22/2022 3:08:33 PM

General Fund (10)

1243 Gifted Support

	<u>Elementary</u>	<u>Secondary</u>	<u>Federal</u>	<u>Total</u>
100 Personnel Services – Salaries				
100 Personnel Services – Salaries	1,164,106.96	1,357,832.82		2,521,939.78
Total Personnel Services – Salaries	\$1,164,106.96	\$1,357,832.82		\$2,521,939.78
200 Personnel Services – Employee Benefits				
210 Group Insurance – Contracted Provider	5,535.60	6,098.56		11,634.16
220 Social Security Contributions	87,681.96	102,438.91		190,120.87
230 PSERS Retirement Contributions	407,855.89	475,897.71		883,753.60
250 Unemployment Compensation	206.93	241.08		448.01
260 Workers' Compensation	12,259.46	14,282.74		26,542.20
270 Group Insurance – Self-Insurance	228,156.16	251,344.22		479,500.38
Total Personnel Services – Employee Benefits	\$741,696.00	\$850,303.22		\$1,591,999.22
300 Purchased Professional and Technical Services				
329 Professional Educational Services – Other	3,646.09	3,870.97		7,517.06
330 Other Professional Services	1,300.00			1,300.00
Total Purchased Professional and Technical Services	\$4,946.09	\$3,870.97		\$8,817.06
500 Other Purchased Services				
530 Communications	149.10			149.10
580 Travel	101.52			101.52
Total Other Purchased Services	\$250.62			\$250.62
600 Supplies				
610 General Supplies	281.00			281.00
640 Books and Periodicals		421.76		421.76
650 Supplies & Fees – Technology Related		4,350.00		4,350.00
Total Supplies	\$281.00	\$4,771.76		\$5,052.76
Total 1243 Gifted Support	\$1,911,280.67	\$2,216,778.77		\$4,128,059.44

General Fund (10)

1260 Physical Support

300 Purchased Professional and Technical Services

	<u>Elementary</u>	<u>Secondary</u>	<u>Federal</u>	<u>Total</u>
322 Professional Educational Services – Ius			9,360.00	9,360.00
323 Professional Educational Services – Other Educational Agencies	13,454.08	2,003.24	72,403.37	87,860.69
Total Purchased Professional and Technical Services	\$13,454.08	\$2,003.24	\$81,763.37	\$97,220.69
Total 1260 Physical Support	\$13,454.08	\$2,003.24	\$81,763.37	\$97,220.69

General Fund (10)

1270 Multi-Handicapped Support

300 Purchased Professional and Technical Services

	<u>Elementary</u>	<u>Secondary</u>	<u>Federal</u>	<u>Total</u>
322 Professional Educational Services – lus	1,109.46	4,640.55	93,291.30	99,041.31
Total Purchased Professional and Technical Services	\$1,109.46	\$4,640.55	\$93,291.30	\$99,041.31

500 Other Purchased Services

567 Tuition To Approved Private Schools (APS) and PA Chartered Schools for the Deaf and Blind	14,034.50	156,015.00		170,049.50
Total Other Purchased Services	\$14,034.50	\$156,015.00		\$170,049.50

600 Supplies

610 General Supplies		731.91		731.91
Total Supplies		\$731.91		\$731.91

Total 1270 Multi-Handicapped Support	\$15,143.96	\$161,387.46	\$93,291.30	\$269,822.72
---	--------------------	---------------------	--------------------	---------------------

General Fund (10)

	<u>Elementary</u>	<u>Secondary</u>	<u>Federal</u>	<u>Total</u>
1290 Special Programs - Other Support				
300 <u>Purchased Professional and Technical Services</u>				
322 Professional Educational Services – Ius			17,554.64	17,554.64
323 Professional Educational Services – Other Educational Agencies	129,113.02	41,495.88	463,737.22	634,346.12
Total Purchased Professional and Technical Services	\$129,113.02	\$41,495.88	\$481,291.86	\$651,900.76
500 <u>Other Purchased Services</u>				
567 Tuition To Approved Private Schools (APS) and PA Chartered Schools for the Deaf and Blind	134,683.71	358,030.84		492,714.55
594 IU Payment By Withholding for Institutionalized Children’s Programs – Special Classes		1,672.49		1,672.49
Total Other Purchased Services	\$134,683.71	\$359,703.33		\$494,387.04
600 <u>Supplies</u>				
610 General Supplies	244.51	1,148.11		1,392.62
650 Supplies & Fees – Technology Related	233.69			233.69
Total Supplies	\$478.20	\$1,148.11		\$1,626.31
Total 1290 Special Programs - Other Support	\$264,274.93	\$402,347.32	\$481,291.86	\$1,147,914.11

LEA : 123464502 Lower Merion SD

Printed 11/22/2022 3:08:33 PM

General Fund (10)

1300 Vocational Education

Elementary

Secondary

Federal

Total

500 Other Purchased Services

564 Tuition To Career and Technology Centers

671,452.00

671,452.00

Total Other Purchased Services

\$671,452.00

\$671,452.00

Total 1300 Vocational Education

\$671,452.00

\$671,452.00

LEA : 123464502 Lower Merion SD

Printed 11/22/2022 3:08:33 PM

General Fund (10)

	<u>Elementary</u>	<u>Secondary</u>	<u>Federal</u>	<u>Total</u>
1400 Other Instructional Programs – Elementary / Secondary				
100 Personnel Services – Salaries				
100 Personnel Services – Salaries	86,691.56	77,877.71	458,981.29	623,550.56
Total Personnel Services – Salaries	\$86,691.56	\$77,877.71	\$458,981.29	\$623,550.56
200 Personnel Services – Employee Benefits				
210 Group Insurance – Contracted Provider		250.57		250.57
220 Social Security Contributions	30,921.06	14,608.22	1,717.51	47,246.79
230 PSERS Retirement Contributions	139,093.59	65,951.49	7,769.09	212,814.17
250 Unemployment Compensation		8.14		8.14
260 Workers' Compensation		482.41		482.41
270 Group Insurance – Self-Insurance		11,068.64		11,068.64
Total Personnel Services – Employee Benefits	\$170,014.65	\$92,369.47	\$9,486.60	\$271,870.72
300 Purchased Professional and Technical Services				
322 Professional Educational Services – Ius		24.95		24.95
323 Professional Educational Services – Other Educational Agencies	1,457.00	28,527.26		29,984.26
329 Professional Educational Services – Other	2,297.50	1,297.83		3,595.33
330 Other Professional Services	1,730.00			1,730.00
Total Purchased Professional and Technical Services	\$5,484.50	\$29,850.04		\$35,334.54
500 Other Purchased Services				
510 Student Transportation Services		4,000.00		4,000.00
561 Tuition To Other School Districts Within the State		624.18		624.18
569 Tuition – Other		5,100.00		5,100.00
Total Other Purchased Services		\$9,724.18		\$9,724.18
600 Supplies				
610 General Supplies	64,414.61	1,815.12	756.81	66,986.54
630 Food	5,953.20	85.00		6,038.20
640 Books and Periodicals	3,109.24		1,698.73	4,807.97
650 Supplies & Fees – Technology Related	1,719.56	21,794.43	291.03	23,805.02
Total Supplies	\$75,196.61	\$23,694.55	\$2,746.57	\$101,637.73
800 Other Objects				
810 Dues and Fees		875.00		875.00
Total Other Objects		\$875.00		\$875.00
Total 1400 Other Instructional Programs – Elementary / Secondary	\$337,387.32	\$234,390.95	\$471,214.46	\$1,042,992.73

LEA : 123464502 Lower Merion SD

Printed 11/22/2022 3:08:33 PM

General Fund (10)

	<u>Elementary</u>	<u>Secondary</u>	<u>Federal</u>	<u>Total</u>
1420 Summer School				
100 Personnel Services – Salaries				
100 Personnel Services – Salaries	8,198.78	25,108.89	458,981.29	492,288.96
Total Personnel Services – Salaries	\$8,198.78	\$25,108.89	\$458,981.29	\$492,288.96
200 Personnel Services – Employee Benefits				
220 Social Security Contributions	25,007.87	10,825.43	1,717.51	37,550.81
230 PSERS Retirement Contributions	114,396.07	47,456.64	7,769.09	169,621.80
Total Personnel Services – Employee Benefits	\$139,403.94	\$58,282.07	\$9,486.60	\$207,172.61
300 Purchased Professional and Technical Services				
323 Professional Educational Services – Other Educational Agencies		10,941.00		10,941.00
329 Professional Educational Services – Other	2,297.50			2,297.50
330 Other Professional Services	630.00			630.00
Total Purchased Professional and Technical Services	\$2,927.50	\$10,941.00		\$13,868.50
600 Supplies				
610 General Supplies	33,877.60	490.47	756.81	35,124.88
630 Food	78.75	25.00		103.75
640 Books and Periodicals			1,698.73	1,698.73
650 Supplies & Fees – Technology Related	1,719.56	20,794.43	291.03	22,805.02
Total Supplies	\$35,675.91	\$21,309.90	\$2,746.57	\$59,732.38
Total 1420 Summer School	\$186,206.13	\$115,641.86	\$471,214.46	\$773,062.45

LEA : 123464502 Lower Merion SD

Printed 11/22/2022 3:08:33 PM

General Fund (10)

1430 Homebound Instruction

Elementary

Secondary

Federal

Total

600 Supplies

650 Supplies & Fees – Technology Related

1,000.00

1,000.00

Total Supplies

\$1,000.00

\$1,000.00

Total 1430 Homebound Instruction

\$1,000.00

\$1,000.00

General Fund (10)

	<u>Elementary</u>	<u>Secondary</u>	<u>Federal</u>	<u>Total</u>
1440 Alternative Regular Education Programs				
300 <u>Purchased Professional and Technical Services</u>				
323 Professional Educational Services – Other Educational Agencies	1,457.00	17,586.26		19,043.26
Total Purchased Professional and Technical Services	\$1,457.00	\$17,586.26		\$19,043.26
500 <u>Other Purchased Services</u>				
561 Tuition To Other School Districts Within the State		624.18		624.18
Total Other Purchased Services		\$624.18		\$624.18
Total 1440 Alternative Regular Education Programs	\$1,457.00	\$18,210.44		\$19,667.44

LEA : 123464502 Lower Merion SD

Printed 11/22/2022 3:08:33 PM

General Fund (10)

1441 Adjudicated / Court-Placed Programs

Elementary

Secondary

Federal

Total

500 Other Purchased Services

561 Tuition To Other School Districts Within the State

624.18

624.18

Total Other Purchased Services

\$624.18

\$624.18

Total 1441 Adjudicated / Court-Placed Programs

\$624.18

\$624.18

LEA : 123464502 Lower Merion SD

Printed 11/22/2022 3:08:33 PM

General Fund (10)

	<u>Elementary</u>	<u>Secondary</u>	<u>Federal</u>	<u>Total</u>
1442 Alternative Education Programs				
300 Purchased Professional and Technical Services				
323 Professional Educational Services – Other Educational Agencies	1,457.00	17,586.26		19,043.26
Total Purchased Professional and Technical Services	\$1,457.00	\$17,586.26		\$19,043.26
Total 1442 Alternative Education Programs	\$1,457.00	\$17,586.26		\$19,043.26

General Fund (10)

1450 Instructional Programs Outside the Established School Day	<u>Elementary</u>	<u>Secondary</u>	<u>Federal</u>	<u>Total</u>
100 Personnel Services – Salaries				
100 Personnel Services – Salaries	78,492.78	7,056.87		85,549.65
Total Personnel Services – Salaries	\$78,492.78	\$7,056.87		\$85,549.65
200 Personnel Services – Employee Benefits				
220 Social Security Contributions	5,913.19	521.73		6,434.92
230 PSERS Retirement Contributions	24,697.52	2,473.33		27,170.85
Total Personnel Services – Employee Benefits	\$30,610.71	\$2,995.06		\$33,605.77
300 Purchased Professional and Technical Services				
322 Professional Educational Services – Ius		24.95		24.95
330 Other Professional Services	1,100.00			1,100.00
Total Purchased Professional and Technical Services	\$1,100.00	\$24.95		\$1,124.95
500 Other Purchased Services				
510 Student Transportation Services		4,000.00		4,000.00
Total Other Purchased Services		\$4,000.00		\$4,000.00
600 Supplies				
610 General Supplies	30,537.01	1,324.65		31,861.66
630 Food	5,874.45	60.00		5,934.45
640 Books and Periodicals	3,109.24			3,109.24
Total Supplies	\$39,520.70	\$1,384.65		\$40,905.35
800 Other Objects				
810 Dues and Fees		875.00		875.00
Total Other Objects		\$875.00		\$875.00
Total 1450 Instructional Programs Outside the Established School Day	\$149,724.19	\$16,336.53		\$166,060.72

General Fund (10)

1490 Additional Other Instructional Programs	<u>Elementary</u>	<u>Secondary</u>	<u>Federal</u>	<u>Total</u>
100 Personnel Services – Salaries				
100 Personnel Services – Salaries		45,711.95		45,711.95
Total Personnel Services – Salaries		\$45,711.95		\$45,711.95
200 Personnel Services – Employee Benefits				
210 Group Insurance – Contracted Provider		250.57		250.57
220 Social Security Contributions		3,261.06		3,261.06
230 PSERS Retirement Contributions		16,021.52		16,021.52
250 Unemployment Compensation		8.14		8.14
260 Workers' Compensation		482.41		482.41
270 Group Insurance – Self-Insurance		11,068.64		11,068.64
Total Personnel Services – Employee Benefits		\$31,092.34		\$31,092.34
300 Purchased Professional and Technical Services				
329 Professional Educational Services – Other		1,297.83		1,297.83
Total Purchased Professional and Technical Services		\$1,297.83		\$1,297.83
500 Other Purchased Services				
569 Tuition – Other		5,100.00		5,100.00
Total Other Purchased Services		\$5,100.00		\$5,100.00
Total 1490 Additional Other Instructional Programs		\$83,202.12		\$83,202.12

LEA : 123464502 Lower Merion SD

Printed 11/22/2022 3:08:33 PM

General Fund (10)

1500 Nonpublic School Programs

Elementary

Secondary

Federal

Total

300 Purchased Professional and Technical Services

322 Professional Educational Services – lus

23,254.00

23,254.00

Total Purchased Professional and Technical Services

\$23,254.00

\$23,254.00

Total 1500 Nonpublic School Programs

\$23,254.00

\$23,254.00

LEA : 123464502 Lower Merion SD

Printed 11/22/2022 3:08:46 PM

General Fund (10)

2000 Support Services

Total

100 Personnel Services – Salaries

100 Personnel Services – Salaries 39,837,348.82

Total Personnel Services – Salaries \$39,837,348.82

200 Personnel Services – Employee Benefits

210 Group Insurance – Contracted Provider 188,746.92

220 Social Security Contributions 2,987,958.17

230 PSERS Retirement Contributions 13,855,457.81

240 Tuition Reimbursement 347,918.94

250 Unemployment Compensation 4,769.60

260 Workers' Compensation 282,572.19

270 Group Insurance – Self-Insurance 9,735,988.75

280 Other Post-Employment Benefits (OPEB) 357,200.08

299 All Other Employee Benefits 78,612.03

Total Personnel Services – Employee Benefits \$27,839,224.49

300 Purchased Professional and Technical Services

322 Professional Educational Services – Ius 245,681.36

329 Professional Educational Services – Other 10,430.72

330 Other Professional Services 2,894,040.02

340 Technical Services 309,572.14

350 Security / Safety Services 506,938.03

360 Employee Training and Development Services 177,370.07

390 Other Purchased Professional and Technical Services 9,647.08

Total Purchased Professional and Technical Services \$4,153,679.42

400 Purchased Property Services

410 Cleaning Services 310,375.77

420 Utility Services 292,189.82

430 Repairs and Maintenance Services 1,143,860.67

440 Rentals 379,604.90

460 Extermination Services 14,334.00

Total Purchased Property Services \$2,140,365.16

500 Other Purchased Services

513 Contracted Carriers 2,338,723.77

516 Student Transportation Services From the IU 55,533.92

520 Insurance – General 135,345.31

521 Fire Insurance 435,865.00

522 Automotive Liability Insurance 220,330.00

523 General Property and Liability Insurance 321,174.00

524 Other Pupil Transportation Insurance 46,672.00

529 Other Insurance 481,985.59

530 Communications 568,627.94

549 Other Advertising/Public Relations 34,919.57

550 Printing and Binding 40,808.89

580 Travel 13,897.70

595 IU Payments By Withholding 138,995.95

LEA : 123464502 Lower Merion SD

Printed 11/22/2022 3:08:46 PM

General Fund (10)

2000 Support Services

Total

500 Other Purchased Services

596 Direct Payments To Intermediate Units	9,276.77
599 Other Miscellaneous Purchased Services	61,538.91

Total Other Purchased Services	\$4,903,695.32
---------------------------------------	-----------------------

600 Supplies

610 General Supplies	1,994,813.41
620 Energy	1,820,444.86
630 Food	20,103.73
640 Books and Periodicals	321,922.91
650 Supplies & Fees – Technology Related	3,021,934.58

Total Supplies	\$7,179,219.49
-----------------------	-----------------------

700 Property

752 Capital Equipment – Original and Additional	13,506.40
762 Capitalized Equipment - Replacement	41,620.05

Total Property	\$55,126.45
-----------------------	--------------------

800 Other Objects

810 Dues and Fees	129,266.39
820 Claims and Judgments Against the LEA	129,431.27
890 Miscellaneous Expenditures	473.08

Total Other Objects	\$259,170.74
----------------------------	---------------------

Total 2000 Support Services	\$86,367,829.89
------------------------------------	------------------------

General Fund (10)

	<u>Elementary</u>	<u>Secondary</u>	<u>Federal</u>	<u>Total</u>
2100 Support Services – Students				
100 Personnel Services – Salaries				
100 Personnel Services – Salaries	2,110,701.13	3,566,681.05	81,407.77	6,364,251.43
Total Personnel Services – Salaries	\$2,110,701.13	\$3,566,681.05	\$81,407.77	\$6,364,251.43
200 Personnel Services – Employee Benefits				
210 Group Insurance – Contracted Provider	10,137.48	16,066.26		27,864.61
220 Social Security Contributions	163,397.78	266,343.60	1,823.36	478,052.32
230 PSERS Retirement Contributions	793,566.09	1,260,110.58	8,921.77	2,274,756.85
250 Unemployment Compensation	331.39	562.55		968.17
260 Workers' Compensation	19,633.38	33,327.99		57,359.02
270 Group Insurance – Self-Insurance	452,183.45	688,880.88		1,209,018.12
280 Other Post-Employment Benefits (OPEB)	22,550.00	21,925.00		44,475.00
Total Personnel Services – Employee Benefits	\$1,461,799.57	\$2,287,216.86	\$10,745.13	\$4,092,494.09
300 Purchased Professional and Technical Services				
322 Professional Educational Services – Ius	131,733.29	61,550.00	17,040.26	210,323.55
330 Other Professional Services	1,865.17	38,891.50	9,788.48	50,545.15
390 Other Purchased Professional and Technical Services		647.08		647.08
Total Purchased Professional and Technical Services	\$133,598.46	\$101,088.58	\$26,828.74	\$261,515.78
400 Purchased Property Services				
430 Repairs and Maintenance Services	130.80	967.63		1,098.43
440 Rentals		3,152.03		3,152.03
Total Purchased Property Services	\$130.80	\$4,119.66		\$4,250.46
500 Other Purchased Services				
530 Communications		1,510.65		1,510.65
580 Travel	101.49	101.47		202.96
599 Other Miscellaneous Purchased Services	28,697.55	32,841.36		61,538.91
Total Other Purchased Services	\$28,799.04	\$34,453.48		\$63,252.52
600 Supplies				
610 General Supplies	32,193.26	5,220.45		37,413.71
630 Food	605.00	1,082.70		1,687.70
640 Books and Periodicals	2,650.51	1,197.90		3,848.41
650 Supplies & Fees – Technology Related	37,823.64	57,450.65		95,274.29
Total Supplies	\$73,272.41	\$64,951.70		\$138,224.11
800 Other Objects				
810 Dues and Fees	1,468.05	3,388.05		4,856.10
Total Other Objects	\$1,468.05	\$3,388.05		\$4,856.10
Total 2100 Support Services – Students	\$3,809,769.46	\$6,061,899.38	\$118,981.64	\$10,928,844.49

LEA : 123464502 Lower Merion SD

Printed 11/22/2022 3:08:46 PM

General Fund (10)

2110 Supervision of Student Services

	<u>Elementary</u>	<u>Secondary</u>	<u>Federal</u>	<u>Total</u>
100 Personnel Services – Salaries				
100 Personnel Services – Salaries	490,444.38	548,856.58	51,069.70	1,090,370.66
Total Personnel Services – Salaries	\$490,444.38	\$548,856.58	\$51,069.70	\$1,090,370.66
200 Personnel Services – Employee Benefits				
210 Group Insurance – Contracted Provider	2,255.65	2,561.24		4,816.89
220 Social Security Contributions	35,594.49	39,931.83	1,823.36	77,349.68
230 PSERS Retirement Contributions	174,337.73	194,800.94	8,921.77	378,060.44
250 Unemployment Compensation	51.13	51.13		102.26
260 Workers' Compensation	3,029.03	3,029.03		6,058.06
270 Group Insurance – Self-Insurance	119,787.70	141,789.76		261,577.46
280 Other Post-Employment Benefits (OPEB)	21,925.00	21,925.00		43,850.00
Total Personnel Services – Employee Benefits	\$356,980.73	\$404,088.93	\$10,745.13	\$771,814.79
300 Purchased Professional and Technical Services				
330 Other Professional Services	1,865.17	5,471.50	9,788.48	17,125.15
390 Other Purchased Professional and Technical Services		647.08		647.08
Total Purchased Professional and Technical Services	\$1,865.17	\$6,118.58	\$9,788.48	\$17,772.23
400 Purchased Property Services				
430 Repairs and Maintenance Services	130.80	967.63		1,098.43
440 Rentals		193.03		193.03
Total Purchased Property Services	\$130.80	\$1,160.66		\$1,291.46
500 Other Purchased Services				
530 Communications		1,346.51		1,346.51
580 Travel	30.47	30.46		60.93
Total Other Purchased Services	\$30.47	\$1,376.97		\$1,407.44
600 Supplies				
610 General Supplies	4,687.84	4,039.82		8,727.66
630 Food	605.00	341.70		946.70
640 Books and Periodicals	642.13	674.14		1,316.27
650 Supplies & Fees – Technology Related	17,045.00	20,545.33		37,590.33
Total Supplies	\$22,979.97	\$25,600.99		\$48,580.96
800 Other Objects				
810 Dues and Fees	1,468.05	1,129.05		2,597.10
Total Other Objects	\$1,468.05	\$1,129.05		\$2,597.10
Total 2110 Supervision of Student Services	\$873,899.57	\$988,331.76	\$71,603.31	\$1,933,834.64

LEA : 123464502 Lower Merion SD

Printed 11/22/2022 3:08:46 PM

General Fund (10)

	<u>Elementary</u>	<u>Secondary</u>	<u>Federal</u>	<u>Total</u>
2111 Supervision of Student Services – Head of Component				
100 Personnel Services – Salaries				
100 Personnel Services – Salaries	160,933.19	160,933.19		321,866.38
Total Personnel Services – Salaries	\$160,933.19	\$160,933.19		\$321,866.38
200 Personnel Services – Employee Benefits				
210 Group Insurance – Contracted Provider	551.43	551.43		1,102.86
220 Social Security Contributions	10,582.98	10,582.93		21,165.91
230 PSERS Retirement Contributions	55,329.10	55,328.89		110,657.99
250 Unemployment Compensation	24.43	24.43		48.86
260 Workers' Compensation	1,447.29	1,447.29		2,894.58
270 Group Insurance – Self-Insurance	21,103.34	21,103.34		42,206.68
280 Other Post-Employment Benefits (OPEB)	14,050.00	14,050.00		28,100.00
Total Personnel Services – Employee Benefits	\$103,088.57	\$103,088.31		\$206,176.88
300 Purchased Professional and Technical Services				
330 Other Professional Services	1,728.50	5,471.50	9,788.48	16,988.48
Total Purchased Professional and Technical Services	\$1,728.50	\$5,471.50	\$9,788.48	\$16,988.48
500 Other Purchased Services				
580 Travel	30.47	30.46		60.93
Total Other Purchased Services	\$30.47	\$30.46		\$60.93
600 Supplies				
610 General Supplies	1,664.22	1,664.22		3,328.44
630 Food		244.50		244.50
640 Books and Periodicals	642.13	642.12		1,284.25
Total Supplies	\$2,306.35	\$2,550.84		\$4,857.19
800 Other Objects				
810 Dues and Fees	723.58	723.59		1,447.17
Total Other Objects	\$723.58	\$723.59		\$1,447.17
Total 2111 Supervision of Student Services – Head of Component	\$268,810.66	\$272,797.89	\$9,788.48	\$551,397.03

LEA : 123464502 Lower Merion SD

Printed 11/22/2022 3:08:46 PM

General Fund (10)

2119 Supervision of Student Services – All Other Supervision

	<u>Elementary</u>	<u>Secondary</u>	<u>Federal</u>	<u>Total</u>
100 Personnel Services – Salaries				
100 Personnel Services – Salaries	329,511.19	387,923.39	51,069.70	768,504.28
Total Personnel Services – Salaries	\$329,511.19	\$387,923.39	\$51,069.70	\$768,504.28
200 Personnel Services – Employee Benefits				
210 Group Insurance – Contracted Provider	1,704.22	2,009.81		3,714.03
220 Social Security Contributions	25,011.51	29,348.90	1,823.36	56,183.77
230 PSERS Retirement Contributions	119,008.63	139,472.05	8,921.77	267,402.45
250 Unemployment Compensation	26.70	26.70		53.40
260 Workers' Compensation	1,581.74	1,581.74		3,163.48
270 Group Insurance – Self-Insurance	98,684.36	120,686.42		219,370.78
280 Other Post-Employment Benefits (OPEB)	7,875.00	7,875.00		15,750.00
Total Personnel Services – Employee Benefits	\$253,892.16	\$301,000.62	\$10,745.13	\$565,637.91
300 Purchased Professional and Technical Services				
330 Other Professional Services	136.67			136.67
390 Other Purchased Professional and Technical Services		647.08		647.08
Total Purchased Professional and Technical Services	\$136.67	\$647.08		\$783.75
400 Purchased Property Services				
430 Repairs and Maintenance Services	130.80	967.63		1,098.43
440 Rentals		193.03		193.03
Total Purchased Property Services	\$130.80	\$1,160.66		\$1,291.46
500 Other Purchased Services				
530 Communications		1,346.51		1,346.51
Total Other Purchased Services		\$1,346.51		\$1,346.51
600 Supplies				
610 General Supplies	3,023.62	2,375.60		5,399.22
630 Food	605.00	97.20		702.20
640 Books and Periodicals		32.02		32.02
650 Supplies & Fees – Technology Related	17,045.00	20,545.33		37,590.33
Total Supplies	\$20,673.62	\$23,050.15		\$43,723.77
800 Other Objects				
810 Dues and Fees	744.47	405.46		1,149.93
Total Other Objects	\$744.47	\$405.46		\$1,149.93
Total 2119 Supervision of Student Services – All Other Supervision	\$605,088.91	\$715,533.87	\$61,814.83	\$1,382,437.61

LEA : 123464502 Lower Merion SD

Printed 11/22/2022 3:08:46 PM

General Fund (10)

2120 Guidance Services

	<u>Elementary</u>	<u>Secondary</u>	<u>Federal</u>	<u>Total</u>
100 Personnel Services – Salaries				
100 Personnel Services – Salaries	1,157,674.20	2,082,145.47	30,338.07	3,270,157.74
Total Personnel Services – Salaries	\$1,157,674.20	\$2,082,145.47	\$30,338.07	\$3,270,157.74
200 Personnel Services – Employee Benefits				
210 Group Insurance – Contracted Provider	5,747.34	9,171.32		14,918.66
220 Social Security Contributions	93,044.91	156,081.71		249,126.62
230 PSERS Retirement Contributions	453,296.42	729,656.23		1,182,952.65
250 Unemployment Compensation	201.37	351.25		552.62
260 Workers' Compensation	11,930.47	20,809.56		32,740.03
270 Group Insurance – Self-Insurance	243,996.22	367,613.41		611,609.63
280 Other Post-Employment Benefits (OPEB)	625.00			625.00
Total Personnel Services – Employee Benefits	\$808,841.73	\$1,283,683.48		\$2,092,525.21
300 Purchased Professional and Technical Services				
330 Other Professional Services		24,320.00		24,320.00
Total Purchased Professional and Technical Services		\$24,320.00		\$24,320.00
400 Purchased Property Services				
440 Rentals		2,959.00		2,959.00
Total Purchased Property Services		\$2,959.00		\$2,959.00
500 Other Purchased Services				
530 Communications		164.14		164.14
Total Other Purchased Services		\$164.14		\$164.14
600 Supplies				
610 General Supplies	7,687.70	1,180.63		8,868.33
630 Food		741.00		741.00
640 Books and Periodicals	2,008.38	367.56		2,375.94
650 Supplies & Fees – Technology Related	6,368.00	22,853.69		29,221.69
Total Supplies	\$16,064.08	\$25,142.88		\$41,206.96
800 Other Objects				
810 Dues and Fees		2,259.00		2,259.00
Total Other Objects		\$2,259.00		\$2,259.00
Total 2120 Guidance Services	\$1,982,580.01	\$3,420,673.97	\$30,338.07	\$5,433,592.05

LEA : 123464502 Lower Merion SD

Printed 11/22/2022 3:08:46 PM

General Fund (10)

2130 Attendance Services

Elementary

Secondary

Federal

Total

100 Personnel Services – Salaries

100 Personnel Services – Salaries

605,461.48

Total Personnel Services – Salaries

\$605,461.48

200 Personnel Services – Employee Benefits

210 Group Insurance – Contracted Provider

1,660.87

220 Social Security Contributions

46,487.58

230 PSERS Retirement Contributions

212,158.41

250 Unemployment Compensation

74.23

260 Workers' Compensation

4,397.65

270 Group Insurance – Self-Insurance

67,953.79

Total Personnel Services – Employee Benefits

\$332,732.53

Total 2130 Attendance Services

\$938,194.01

LEA : 123464502 Lower Merion SD

Printed 11/22/2022 3:08:46 PM

General Fund (10)

	<u>Elementary</u>	<u>Secondary</u>	<u>Federal</u>	<u>Total</u>
2140 Psychological Services				
100 Personnel Services – Salaries				
100 Personnel Services – Salaries	462,582.55	935,679.00		1,398,261.55
Total Personnel Services – Salaries	\$462,582.55	\$935,679.00		\$1,398,261.55
200 Personnel Services – Employee Benefits				
210 Group Insurance – Contracted Provider	2,134.49	4,333.70		6,468.19
220 Social Security Contributions	34,758.38	70,330.06		105,088.44
230 PSERS Retirement Contributions	165,931.94	335,653.41		501,585.35
250 Unemployment Compensation	78.89	160.17		239.06
260 Workers' Compensation	4,673.88	9,489.40		14,163.28
270 Group Insurance – Self-Insurance	88,399.53	179,477.71		267,877.24
Total Personnel Services – Employee Benefits	\$295,977.11	\$599,444.45		\$895,421.56
300 Purchased Professional and Technical Services				
322 Professional Educational Services – Ius	131,733.29	61,550.00	17,040.26	210,323.55
330 Other Professional Services		9,100.00		9,100.00
Total Purchased Professional and Technical Services	\$131,733.29	\$70,650.00	\$17,040.26	\$219,423.55
500 Other Purchased Services				
580 Travel	71.02	71.01		142.03
599 Other Miscellaneous Purchased Services	28,697.55	32,841.36		61,538.91
Total Other Purchased Services	\$28,768.57	\$32,912.37		\$61,680.94
600 Supplies				
610 General Supplies	19,817.72			19,817.72
640 Books and Periodicals		156.20		156.20
650 Supplies & Fees – Technology Related	14,410.64	14,051.63		28,462.27
Total Supplies	\$34,228.36	\$14,207.83		\$48,436.19
Total 2140 Psychological Services	\$953,289.88	\$1,652,893.65	\$17,040.26	\$2,623,223.79

LEA : 123464502 Lower Merion SD

Printed 11/22/2022 3:08:46 PM

General Fund (10)

2200 Support Services – Instructional Staff

	<u>Elementary</u>	<u>Secondary</u>	<u>Federal</u>	<u>Total</u>
100 Personnel Services – Salaries				
100 Personnel Services – Salaries	2,088,040.80	1,481,506.78		3,569,547.58
Total Personnel Services – Salaries	\$2,088,040.80	\$1,481,506.78		\$3,569,547.58
200 Personnel Services – Employee Benefits				
210 Group Insurance – Contracted Provider	7,405.13	4,750.34		12,155.47
220 Social Security Contributions	157,362.92	112,643.05		270,005.97
230 PSERS Retirement Contributions	730,829.39	513,531.19		1,244,360.58
240 Tuition Reimbursement	129,510.84	209,039.50		338,550.34
250 Unemployment Compensation	247.20	165.03		412.23
260 Workers' Compensation	14,644.69	9,777.17		24,421.86
270 Group Insurance – Self-Insurance	350,326.13	226,702.45		577,028.58
Total Personnel Services – Employee Benefits	\$1,390,326.30	\$1,076,608.73		\$2,466,935.03
300 Purchased Professional and Technical Services				
322 Professional Educational Services – lus		300.00	35,057.81	35,357.81
329 Professional Educational Services – Other	9,271.17	1,159.55		10,430.72
330 Other Professional Services	32,573.25	31,075.00		63,648.25
360 Employee Training and Development Services	13,646.39	75,811.31	430.00	89,887.70
Total Purchased Professional and Technical Services	\$55,490.81	\$108,345.86	\$35,487.81	\$199,324.48
400 Purchased Property Services				
430 Repairs and Maintenance Services	130.80	593.73		724.53
440 Rentals		129.58		129.58
Total Purchased Property Services	\$130.80	\$723.31		\$854.11
500 Other Purchased Services				
530 Communications	153.03	478.54		631.57
550 Printing and Binding	30.00	186.00		216.00
580 Travel	200.91	91.11		292.02
Total Other Purchased Services	\$383.94	\$755.65		\$1,139.59
600 Supplies				
610 General Supplies	5,362.15	10,110.43	990.00	16,462.58
630 Food	2,488.23	7,883.45		10,371.68
640 Books and Periodicals	104,138.90	209,487.95		313,626.85
650 Supplies & Fees – Technology Related	73,730.46	297,878.52		371,608.98
Total Supplies	\$185,719.74	\$525,360.35	\$990.00	\$712,070.09
800 Other Objects				
810 Dues and Fees	1,277.39	4,145.35		5,422.74
Total Other Objects	\$1,277.39	\$4,145.35		\$5,422.74
Total 2200 Support Services – Instructional Staff	\$3,721,369.78	\$3,197,446.03	\$36,477.81	\$6,955,293.62

LEA : 123464502 Lower Merion SD

Printed 11/22/2022 3:08:46 PM

General Fund (10)

2220 Technology Support Services

600 Supplies

650 Supplies & Fees – Technology Related

Total Supplies

Total 2220 Technology Support Services

Elementary

Secondary

Federal

Total

346.04

346.04

\$346.04

\$346.04

\$346.04

\$346.04

General Fund (10)

2250 School Library Services

	<u>Elementary</u>	<u>Secondary</u>	<u>Federal</u>	<u>Total</u>
100 Personnel Services – Salaries				
100 Personnel Services – Salaries	1,062,305.08	487,756.40		1,550,061.48
Total Personnel Services – Salaries	\$1,062,305.08	\$487,756.40		\$1,550,061.48
200 Personnel Services – Employee Benefits				
210 Group Insurance – Contracted Provider	3,959.15	2,079.68		6,038.83
220 Social Security Contributions	81,520.00	36,800.79		118,320.79
230 PSERS Retirement Contributions	371,924.95	170,951.43		542,876.38
250 Unemployment Compensation	122.02	59.69		181.71
260 Workers' Compensation	7,228.33	3,536.15		10,764.48
270 Group Insurance – Self-Insurance	202,181.61	107,558.81		309,740.42
Total Personnel Services – Employee Benefits	\$666,936.06	\$320,986.55		\$987,922.61
300 Purchased Professional and Technical Services				
329 Professional Educational Services – Other	2,271.17	809.55		3,080.72
330 Other Professional Services		750.00		750.00
Total Purchased Professional and Technical Services	\$2,271.17	\$1,559.55		\$3,830.72
600 Supplies				
610 General Supplies	1,987.60	8,921.27		10,908.87
630 Food		99.00		99.00
640 Books and Periodicals	102,729.94	198,389.69		301,119.63
650 Supplies & Fees – Technology Related	18,864.31	106,640.06		125,504.37
Total Supplies	\$123,581.85	\$314,050.02		\$437,631.87
Total 2250 School Library Services	\$1,855,094.16	\$1,124,352.52		\$2,979,446.68

General Fund (10)

2260 Instruction and Curriculum Development Services	<u>Elementary</u>	<u>Secondary</u>	<u>Federal</u>	<u>Total</u>
100 Personnel Services – Salaries				
100 Personnel Services – Salaries	945,349.84	958,925.75		1,904,275.59
Total Personnel Services – Salaries	\$945,349.84	\$958,925.75		\$1,904,275.59
200 Personnel Services – Employee Benefits				
210 Group Insurance – Contracted Provider	3,445.98	2,670.66		6,116.64
220 Social Security Contributions	69,699.10	73,020.40		142,719.50
230 PSERS Retirement Contributions	330,886.88	330,379.68		661,266.56
250 Unemployment Compensation	125.18	105.34		230.52
260 Workers' Compensation	7,416.36	6,241.02		13,657.38
270 Group Insurance – Self-Insurance	148,144.52	119,143.64		267,288.16
Total Personnel Services – Employee Benefits	\$559,718.02	\$531,560.74		\$1,091,278.76
300 Purchased Professional and Technical Services				
329 Professional Educational Services – Other		350.00		350.00
330 Other Professional Services	8,498.25			8,498.25
Total Purchased Professional and Technical Services	\$8,498.25	\$350.00		\$8,848.25
400 Purchased Property Services				
430 Repairs and Maintenance Services	130.80	593.73		724.53
440 Rentals		129.58		129.58
Total Purchased Property Services	\$130.80	\$723.31		\$854.11
500 Other Purchased Services				
530 Communications	153.03	478.54		631.57
550 Printing and Binding	30.00	186.00		216.00
580 Travel	200.91			200.91
Total Other Purchased Services	\$383.94	\$664.54		\$1,048.48
600 Supplies				
610 General Supplies	3,374.55	1,189.16	990.00	5,553.71
630 Food	1,792.30	2,741.41		4,533.71
640 Books and Periodicals	662.24	9,277.00		9,939.24
650 Supplies & Fees – Technology Related	54,520.11	190,988.46		245,508.57
Total Supplies	\$60,349.20	\$204,196.03	\$990.00	\$265,535.23
800 Other Objects				
810 Dues and Fees	441.20	631.36		1,072.56
Total Other Objects	\$441.20	\$631.36		\$1,072.56
Total 2260 Instruction and Curriculum Development Services	\$1,574,871.25	\$1,697,051.73	\$990.00	\$3,272,912.98

General Fund (10)

2270 Instructional Staff Professional Development Services	<u>Elementary</u>	<u>Secondary</u>	<u>Federal</u>	<u>Total</u>
100 Personnel Services – Salaries				
100 Personnel Services – Salaries	80,385.88	34,824.63		115,210.51
Total Personnel Services – Salaries	\$80,385.88	\$34,824.63		\$115,210.51
200 Personnel Services – Employee Benefits				
220 Social Security Contributions	6,143.82	2,821.86		8,965.68
230 PSERS Retirement Contributions	28,017.56	12,200.08		40,217.64
240 Tuition Reimbursement	129,510.84	209,039.50		338,550.34
Total Personnel Services – Employee Benefits	\$163,672.22	\$224,061.44		\$387,733.66
300 Purchased Professional and Technical Services				
322 Professional Educational Services – Ius		300.00		300.00
329 Professional Educational Services – Other	7,000.00			7,000.00
330 Other Professional Services	24,075.00	30,325.00		54,400.00
360 Employee Training and Development Services	13,646.39	75,811.31	430.00	89,887.70
Total Purchased Professional and Technical Services	\$44,721.39	\$106,436.31	\$430.00	\$151,587.70
500 Other Purchased Services				
580 Travel		91.11		91.11
Total Other Purchased Services		\$91.11		\$91.11
600 Supplies				
630 Food	695.93	5,043.04		5,738.97
640 Books and Periodicals	746.72	1,821.26		2,567.98
650 Supplies & Fees – Technology Related		250.00		250.00
Total Supplies	\$1,442.65	\$7,114.30		\$8,556.95
800 Other Objects				
810 Dues and Fees	836.19	3,513.99		4,350.18
Total Other Objects	\$836.19	\$3,513.99		\$4,350.18
Total 2270 Instructional Staff Professional Development Services	\$291,058.33	\$376,041.78	\$430.00	\$667,530.11

LEA : 123464502 Lower Merion SD

Printed 11/22/2022 3:08:46 PM

General Fund (10)

2280 Nonpublic Support Services

300 Purchased Professional and Technical Services

322 Professional Educational Services – lus

Total Purchased Professional and Technical Services

Total 2280 Nonpublic Support Services

Elementary

Secondary

Federal

Total

35,057.81

35,057.81

\$35,057.81

\$35,057.81

\$35,057.81

\$35,057.81

LEA : 123464502 Lower Merion SD

Printed 11/22/2022 3:08:46 PM

General Fund (10)

	<u>Elementary</u>	<u>Secondary</u>	<u>Federal</u>	<u>Total</u>
2300 Support Services – Administration				
100 Personnel Services – Salaries				
100 Personnel Services – Salaries	2,862,846.82	4,214,181.86		8,264,678.25
Total Personnel Services – Salaries	\$2,862,846.82	\$4,214,181.86		\$8,264,678.25
200 Personnel Services – Employee Benefits				
210 Group Insurance – Contracted Provider	13,554.06	19,385.92		36,921.78
220 Social Security Contributions	209,329.72	311,086.32		601,814.83
230 PSERS Retirement Contributions	996,273.91	1,467,786.94		2,860,531.24
250 Unemployment Compensation	355.20	379.93		878.97
260 Workers' Compensation	21,042.48	22,509.04		52,073.58
270 Group Insurance – Self-Insurance	682,647.25	1,095,623.85		1,955,651.82
280 Other Post-Employment Benefits (OPEB)	17,253.64	118,946.41		227,556.95
299 All Other Employee Benefits				30,696.68
Total Personnel Services – Employee Benefits	\$1,940,456.26	\$3,035,718.41		\$5,766,125.85
300 Purchased Professional and Technical Services				
330 Other Professional Services	4,491.45	40,032.75		1,901,978.22
340 Technical Services				26,175.00
350 Security / Safety Services		389.95		389.95
390 Other Purchased Professional and Technical Services				9,000.00
Total Purchased Professional and Technical Services	\$4,491.45	\$40,422.70		\$1,937,543.17
400 Purchased Property Services				
430 Repairs and Maintenance Services	10,985.61	6,514.71		17,590.32
440 Rentals	2,159.11	25,953.79		28,112.90
Total Purchased Property Services	\$13,144.72	\$32,468.50		\$45,703.22
500 Other Purchased Services				
520 Insurance – General				36,144.00
530 Communications	3,954.19	9,457.20		30,149.46
549 Other Advertising/Public Relations				3,203.25
550 Printing and Binding		3,438.64		32,336.01
580 Travel	63.18	532.91		1,473.54
Total Other Purchased Services	\$4,017.37	\$13,428.75		\$103,306.26
600 Supplies				
610 General Supplies	13,424.67	65,715.70		83,957.75
630 Food	36.00	3,504.85		4,734.99
640 Books and Periodicals	94.68	3,836.62		4,186.77
650 Supplies & Fees – Technology Related	12,513.42	61,128.59		91,405.63
Total Supplies	\$26,068.77	\$134,185.76		\$184,285.14
800 Other Objects				
810 Dues and Fees	5,498.30	2,519.62		56,040.53
820 Claims and Judgments Against the LEA				129,431.27
Total Other Objects	\$5,498.30	\$2,519.62		\$185,471.80
Total 2300 Support Services – Administration	\$4,856,523.69	\$7,472,925.60		\$16,487,113.69

LEA : 123464502 Lower Merion SD

Printed 11/22/2022 3:08:46 PM

General Fund (10)

2310 Board Services

	<u>Elementary</u>	<u>Secondary</u>	<u>Federal</u>	<u>Total</u>
100 Personnel Services – Salaries				
100 Personnel Services – Salaries				11,000.00
Total Personnel Services – Salaries				\$11,000.00
200 Personnel Services – Employee Benefits				
220 Social Security Contributions				841.50
230 PSERS Retirement Contributions				3,855.34
Total Personnel Services – Employee Benefits				\$4,696.84
300 Purchased Professional and Technical Services				
330 Other Professional Services				55,673.75
390 Other Purchased Professional and Technical Services				9,000.00
Total Purchased Professional and Technical Services				\$64,673.75
500 Other Purchased Services				
520 Insurance – General				310.75
549 Other Advertising/Public Relations				3,203.25
Total Other Purchased Services				\$3,514.00
600 Supplies				
610 General Supplies				3,688.30
630 Food				46.00
Total Supplies				\$3,734.30
800 Other Objects				
820 Claims and Judgments Against the LEA				129,431.27
Total Other Objects				\$129,431.27
Total 2310 Board Services				\$217,050.16

LEA : 123464502 Lower Merion SD

Printed 11/22/2022 3:08:46 PM

General Fund (10)

2320 Board Treasurer Services

Elementary

Secondary

Federal

Total

500 Other Purchased Services

520 Insurance – General

888.00

Total Other Purchased Services

\$888.00

Total 2320 Board Treasurer Services

\$888.00

General Fund (10)

2330 Tax Assessment and Collection Services	<u>Elementary</u>	<u>Secondary</u>	<u>Federal</u>	<u>Total</u>
100 Personnel Services – Salaries				
100 Personnel Services – Salaries				23,573.00
Total Personnel Services – Salaries				\$23,573.00
200 Personnel Services – Employee Benefits				
220 Social Security Contributions				1,803.11
Total Personnel Services – Employee Benefits				\$1,803.11
300 Purchased Professional and Technical Services				
330 Other Professional Services				44,510.00
Total Purchased Professional and Technical Services				\$44,510.00
500 Other Purchased Services				
520 Insurance – General				34,945.25
530 Communications				13,836.41
550 Printing and Binding				10,611.32
Total Other Purchased Services				\$59,392.98
Total 2330 Tax Assessment and Collection Services				\$129,279.09

LEA : 123464502 Lower Merion SD

Printed 11/22/2022 3:08:46 PM

General Fund (10)

2350 Legal and Accounting Services

Elementary

Secondary

Federal

Total

300 Purchased Professional and Technical Services

330 Other Professional Services

1,753,983.77

Total Purchased Professional and Technical Services

\$1,753,983.77

Total 2350 Legal and Accounting Services

\$1,753,983.77

General Fund (10)

	<u>Elementary</u>	<u>Secondary</u>	<u>Federal</u>	<u>Total</u>
2360 Office of the Superintendent / Executive Director Services				
100 Personnel Services – Salaries				
100 Personnel Services – Salaries				810,528.87
Total Personnel Services – Salaries				\$810,528.87
200 Personnel Services – Employee Benefits				
210 Group Insurance – Contracted Provider				2,499.62
220 Social Security Contributions				52,525.59
230 PSERS Retirement Contributions				272,603.57
250 Unemployment Compensation				107.84
260 Workers' Compensation				6,389.27
270 Group Insurance – Self-Insurance				101,003.10
280 Other Post-Employment Benefits (OPEB)				91,356.90
299 All Other Employee Benefits				30,696.68
Total Personnel Services – Employee Benefits				\$557,182.57
400 Purchased Property Services				
430 Repairs and Maintenance Services				90.00
Total Purchased Property Services				\$90.00
500 Other Purchased Services				
530 Communications	365.91	365.90		731.81
580 Travel				877.45
Total Other Purchased Services	\$365.91	\$365.90		\$1,609.26
600 Supplies				
610 General Supplies				404.35
630 Food				1,148.14
640 Books and Periodicals				206.51
650 Supplies & Fees – Technology Related				119.79
Total Supplies				\$1,878.79
800 Other Objects				
810 Dues and Fees				47,457.61
Total Other Objects				\$47,457.61
Total 2360 Office of the Superintendent / Executive Director Services	\$365.91	\$365.90		\$1,418,747.10

General Fund (10)

2370 Community Relations Services

	<u>Elementary</u>	<u>Secondary</u>	<u>Federal</u>	<u>Total</u>
--	-------------------	------------------	----------------	--------------

100 Personnel Services – Salaries

100 Personnel Services – Salaries				255,775.70
-----------------------------------	--	--	--	------------

Total Personnel Services – Salaries				\$255,775.70
--	--	--	--	---------------------

200 Personnel Services – Employee Benefits

210 Group Insurance – Contracted Provider				911.99
220 Social Security Contributions				19,517.87
230 PSERS Retirement Contributions				89,599.17
250 Unemployment Compensation				20.54
260 Workers' Compensation				1,217.07
270 Group Insurance – Self-Insurance				48,057.65

Total Personnel Services – Employee Benefits				\$159,324.29
---	--	--	--	---------------------

300 Purchased Professional and Technical Services

330 Other Professional Services				3,286.50
340 Technical Services				26,175.00

Total Purchased Professional and Technical Services				\$29,461.50
--	--	--	--	--------------------

500 Other Purchased Services

530 Communications				2,901.66
550 Printing and Binding				18,286.05

Total Other Purchased Services				\$21,187.71
---------------------------------------	--	--	--	--------------------

600 Supplies

610 General Supplies				58.32
640 Books and Periodicals				48.96
650 Supplies & Fees – Technology Related				17,643.83

Total Supplies				\$17,751.11
-----------------------	--	--	--	--------------------

800 Other Objects

810 Dues and Fees				565.00
-------------------	--	--	--	--------

Total Other Objects				\$565.00
----------------------------	--	--	--	-----------------

Total 2370 Community Relations Services				\$484,065.31
--	--	--	--	---------------------

LEA : 123464502 Lower Merion SD

Printed 11/22/2022 3:08:46 PM

General Fund (10)

2380 Office of the Principal Services

	<u>Elementary</u>	<u>Secondary</u>	<u>Federal</u>	<u>Total</u>
100 Personnel Services – Salaries				
100 Personnel Services – Salaries	2,862,846.82	4,214,181.86		7,077,028.68
Total Personnel Services – Salaries	\$2,862,846.82	\$4,214,181.86		\$7,077,028.68
200 Personnel Services – Employee Benefits				
210 Group Insurance – Contracted Provider	13,554.06	19,385.92		32,939.98
220 Social Security Contributions	209,329.72	311,086.32		520,416.04
230 PSERS Retirement Contributions	996,273.91	1,467,786.94		2,464,060.85
250 Unemployment Compensation	355.20	379.93		735.13
260 Workers' Compensation	21,042.48	22,509.04		43,551.52
270 Group Insurance – Self-Insurance	682,647.25	1,095,623.85		1,778,271.10
280 Other Post-Employment Benefits (OPEB)	17,253.64	118,946.41		136,200.05
Total Personnel Services – Employee Benefits	\$1,940,456.26	\$3,035,718.41		\$4,976,174.67
300 Purchased Professional and Technical Services				
330 Other Professional Services	4,491.45	40,032.75		44,524.20
350 Security / Safety Services		389.95		389.95
Total Purchased Professional and Technical Services	\$4,491.45	\$40,422.70		\$44,914.15
400 Purchased Property Services				
430 Repairs and Maintenance Services	10,985.61	6,514.71		17,500.32
440 Rentals	2,159.11	25,953.79		28,112.90
Total Purchased Property Services	\$13,144.72	\$32,468.50		\$45,613.22
500 Other Purchased Services				
530 Communications	3,588.28	9,091.30		12,679.58
550 Printing and Binding		3,438.64		3,438.64
580 Travel	63.18	532.91		596.09
Total Other Purchased Services	\$3,651.46	\$13,062.85		\$16,714.31
600 Supplies				
610 General Supplies	13,424.67	65,715.70		79,140.37
630 Food	36.00	3,504.85		3,540.85
640 Books and Periodicals	94.68	3,836.62		3,931.30
650 Supplies & Fees – Technology Related	12,513.42	61,128.59		73,642.01
Total Supplies	\$26,068.77	\$134,185.76		\$160,254.53
800 Other Objects				
810 Dues and Fees	5,498.30	2,519.62		8,017.92
Total Other Objects	\$5,498.30	\$2,519.62		\$8,017.92
Total 2380 Office of the Principal Services	\$4,856,157.78	\$7,472,559.70		\$12,328,717.48

LEA : 123464502 Lower Merion SD

Printed 11/22/2022 3:08:46 PM

General Fund (10)

2390 Other Administration Services

100 Personnel Services – Salaries

	<u>Elementary</u>	<u>Secondary</u>	<u>Federal</u>	<u>Total</u>
100 Personnel Services – Salaries				86,772.00
Total Personnel Services – Salaries				\$86,772.00
200 Personnel Services – Employee Benefits				
210 Group Insurance – Contracted Provider				570.19
220 Social Security Contributions				6,710.72
230 PSERS Retirement Contributions				30,412.31
250 Unemployment Compensation				15.46
260 Workers' Compensation				915.72
270 Group Insurance – Self-Insurance				28,319.97
Total Personnel Services – Employee Benefits				\$66,944.37
600 Supplies				
610 General Supplies				666.41
Total Supplies				\$666.41
Total 2390 Other Administration Services				\$154,382.78

General Fund (10)

2400 Support Services – Pupil Health

100 Personnel Services – Salaries

	<u>Elementary</u>	<u>Secondary</u>	<u>Federal</u>	<u>Total</u>
100 Personnel Services – Salaries			115,708.70	2,426,760.64
Total Personnel Services – Salaries			\$115,708.70	\$2,426,760.64

200 Personnel Services – Employee Benefits

210 Group Insurance – Contracted Provider				12,062.57
220 Social Security Contributions			4,307.70	179,857.60
230 PSERS Retirement Contributions			20,177.17	846,282.80
250 Unemployment Compensation				278.70
260 Workers' Compensation				16,511.60
270 Group Insurance – Self-Insurance				636,101.70
280 Other Post-Employment Benefits (OPEB)				23,218.13
Total Personnel Services – Employee Benefits			\$24,484.87	\$1,714,313.10

300 Purchased Professional and Technical Services

330 Other Professional Services				187,456.42
Total Purchased Professional and Technical Services				\$187,456.42

400 Purchased Property Services

430 Repairs and Maintenance Services				306.50
Total Purchased Property Services				\$306.50

500 Other Purchased Services

550 Printing and Binding				970.00
580 Travel				904.68
Total Other Purchased Services				\$1,874.68

600 Supplies

610 General Supplies			448.40	32,573.49
630 Food				2,957.50
650 Supplies & Fees – Technology Related				21,756.83
Total Supplies			\$448.40	\$57,287.82

800 Other Objects

810 Dues and Fees				1,263.01
Total Other Objects				\$1,263.01

Total 2400 Support Services – Pupil Health

			\$140,641.97	\$4,389,262.17
--	--	--	---------------------	-----------------------

LEA : 123464502 Lower Merion SD

Printed 11/22/2022 3:08:46 PM

General Fund (10)

2410 Supervision of Health Services

Elementary

Secondary

Federal

Total

100 Personnel Services – Salaries

100 Personnel Services – Salaries

173,621.48

Total Personnel Services – Salaries

\$173,621.48

200 Personnel Services – Employee Benefits

210 Group Insurance – Contracted Provider

747.70

220 Social Security Contributions

11,996.67

230 PSERS Retirement Contributions

57,690.90

250 Unemployment Compensation

30.93

260 Workers' Compensation

1,832.26

270 Group Insurance – Self-Insurance

27,671.58

280 Other Post-Employment Benefits (OPEB)

23,218.13

Total Personnel Services – Employee Benefits

\$123,188.17

Total 2410 Supervision of Health Services

\$296,809.65

LEA : 123464502 Lower Merion SD

Printed 11/22/2022 3:08:46 PM

General Fund (10)

2411 Supervision of Health Services – Head of Component

Elementary

Secondary

Federal

Total

100 Personnel Services – Salaries

100 Personnel Services – Salaries

173,621.48

Total Personnel Services – Salaries

\$173,621.48

200 Personnel Services – Employee Benefits

210 Group Insurance – Contracted Provider

747.70

220 Social Security Contributions

11,996.67

230 PSERS Retirement Contributions

57,690.90

250 Unemployment Compensation

30.93

260 Workers' Compensation

1,832.26

270 Group Insurance – Self-Insurance

27,671.58

280 Other Post-Employment Benefits (OPEB)

23,218.13

Total Personnel Services – Employee Benefits

\$123,188.17

Total 2411 Supervision of Health Services – Head of Component

\$296,809.65

LEA : 123464502 Lower Merion SD

Printed 11/22/2022 3:08:46 PM

General Fund (10)

2420 Medical Services

Elementary

Secondary

Federal

Total

300 Purchased Professional and Technical Services

330 Other Professional Services

35,699.92

Total Purchased Professional and Technical Services

\$35,699.92

Total 2420 Medical Services

\$35,699.92

General Fund (10)

2440 Nursing Services

	<u>Elementary</u>	<u>Secondary</u>	<u>Federal</u>	<u>Total</u>
100 Personnel Services – Salaries				
100 Personnel Services – Salaries			115,708.70	1,866,327.81
Total Personnel Services – Salaries			\$115,708.70	\$1,866,327.81
200 Personnel Services – Employee Benefits				
210 Group Insurance – Contracted Provider				9,406.11
220 Social Security Contributions			4,307.70	138,676.93
230 PSERS Retirement Contributions			20,177.17	653,020.41
250 Unemployment Compensation				204.66
260 Workers' Compensation				12,125.41
270 Group Insurance – Self-Insurance				507,207.50
Total Personnel Services – Employee Benefits			\$24,484.87	\$1,320,641.02
300 Purchased Professional and Technical Services				
330 Other Professional Services				151,756.50
Total Purchased Professional and Technical Services				\$151,756.50
400 Purchased Property Services				
430 Repairs and Maintenance Services				306.50
Total Purchased Property Services				\$306.50
500 Other Purchased Services				
550 Printing and Binding				970.00
580 Travel				904.68
Total Other Purchased Services				\$1,874.68
600 Supplies				
610 General Supplies			448.40	32,573.49
630 Food				2,957.50
650 Supplies & Fees – Technology Related				21,756.83
Total Supplies			\$448.40	\$57,287.82
800 Other Objects				
810 Dues and Fees				1,263.01
Total Other Objects				\$1,263.01
Total 2440 Nursing Services			\$140,641.97	\$3,399,457.34

LEA : 123464502 Lower Merion SD

Printed 11/22/2022 3:08:46 PM

General Fund (10)

2450 Nonpublic Health Services

Elementary

Secondary

Federal

Total

100 Personnel Services – Salaries

100 Personnel Services – Salaries

386,811.35

Total Personnel Services – Salaries

\$386,811.35

200 Personnel Services – Employee Benefits

210 Group Insurance – Contracted Provider

1,908.76

220 Social Security Contributions

29,184.00

230 PSERS Retirement Contributions

135,571.49

250 Unemployment Compensation

43.11

260 Workers' Compensation

2,553.93

270 Group Insurance – Self-Insurance

101,222.62

Total Personnel Services – Employee Benefits

\$270,483.91

Total 2450 Nonpublic Health Services

\$657,295.26

General Fund (10)

2500 Support Services – Business

Elementary Secondary Federal Total

100	<u>Personnel Services – Salaries</u>			
	100 Personnel Services – Salaries			740,668.27
Total Personnel Services – Salaries				\$740,668.27
200	<u>Personnel Services – Employee Benefits</u>			
	210 Group Insurance – Contracted Provider			2,754.97
	220 Social Security Contributions			51,149.06
	230 PSERS Retirement Contributions			258,370.85
	250 Unemployment Compensation			81.43
	260 Workers' Compensation			4,824.04
	270 Group Insurance – Self-Insurance			140,311.80
	299 All Other Employee Benefits			10,625.35
Total Personnel Services – Employee Benefits				\$468,117.50
300	<u>Purchased Professional and Technical Services</u>			
	330 Other Professional Services			9,975.00
	340 Technical Services			73,611.74
Total Purchased Professional and Technical Services				\$83,586.74
400	<u>Purchased Property Services</u>			
	430 Repairs and Maintenance Services			4,802.74
	440 Rentals			4,218.74
Total Purchased Property Services				\$9,021.48
500	<u>Other Purchased Services</u>			
	530 Communications			5,694.94
	580 Travel			108.63
Total Other Purchased Services				\$5,803.57
600	<u>Supplies</u>			
	610 General Supplies			6,758.52
	630 Food			190.00
	650 Supplies & Fees – Technology Related			423.95
Total Supplies				\$7,372.47
800	<u>Other Objects</u>			
	810 Dues and Fees			50,492.26
Total Other Objects				\$50,492.26
Total 2500 Support Services – Business				\$1,365,062.29

General Fund (10)

2510 Fiscal Services

Elementary Secondary Federal Total

100	<u>Personnel Services – Salaries</u>			
	100 Personnel Services – Salaries			740,668.27
Total Personnel Services – Salaries				\$740,668.27
200	<u>Personnel Services – Employee Benefits</u>			
	210 Group Insurance – Contracted Provider			2,754.97
	220 Social Security Contributions			51,149.06
	230 PSERS Retirement Contributions			258,370.85
	250 Unemployment Compensation			81.43
	260 Workers' Compensation			4,824.04
	270 Group Insurance – Self-Insurance			140,311.80
	299 All Other Employee Benefits			10,625.35
Total Personnel Services – Employee Benefits				\$468,117.50
300	<u>Purchased Professional and Technical Services</u>			
	330 Other Professional Services			9,975.00
	340 Technical Services			73,611.74
Total Purchased Professional and Technical Services				\$83,586.74
400	<u>Purchased Property Services</u>			
	430 Repairs and Maintenance Services			4,802.74
	440 Rentals			4,218.74
Total Purchased Property Services				\$9,021.48
500	<u>Other Purchased Services</u>			
	530 Communications			5,694.94
	580 Travel			108.63
Total Other Purchased Services				\$5,803.57
600	<u>Supplies</u>			
	610 General Supplies			6,758.52
	630 Food			190.00
	650 Supplies & Fees – Technology Related			423.95
Total Supplies				\$7,372.47
800	<u>Other Objects</u>			
	810 Dues and Fees			50,492.26
Total Other Objects				\$50,492.26
Total 2510 Fiscal Services				\$1,365,062.29

General Fund (10)

	<u>Elementary</u>	<u>Secondary</u>	<u>Federal</u>	<u>Total</u>
2511 Supervision of Fiscal Services - Head of Component				
100 <u>Personnel Services – Salaries</u>				
100 Personnel Services – Salaries				301,019.00
Total Personnel Services – Salaries				\$301,019.00
200 <u>Personnel Services – Employee Benefits</u>				
210 Group Insurance – Contracted Provider				944.53
220 Social Security Contributions				18,824.14
230 PSERS Retirement Contributions				105,303.02
250 Unemployment Compensation				38.22
260 Workers' Compensation				2,264.60
270 Group Insurance – Self-Insurance				38,701.15
299 All Other Employee Benefits				10,625.35
Total Personnel Services – Employee Benefits				\$176,701.01
300 <u>Purchased Professional and Technical Services</u>				
340 Technical Services				50.00
Total Purchased Professional and Technical Services				\$50.00
500 <u>Other Purchased Services</u>				
580 Travel				52.18
Total Other Purchased Services				\$52.18
600 <u>Supplies</u>				
610 General Supplies				418.84
630 Food				190.00
650 Supplies & Fees – Technology Related				24.00
Total Supplies				\$632.84
800 <u>Other Objects</u>				
810 Dues and Fees				395.00
Total Other Objects				\$395.00
Total 2511 Supervision of Fiscal Services - Head of Component				\$478,850.03

General Fund (10)

2513 Receiving and Disbursing Funds Services

Elementary

Secondary

Federal

Total

100 Personnel Services – Salaries

100 Personnel Services – Salaries

126,345.42

Total Personnel Services – Salaries

\$126,345.42

200 Personnel Services – Employee Benefits

210 Group Insurance – Contracted Provider

792.79

220 Social Security Contributions

9,466.59

230 PSERS Retirement Contributions

44,239.11

250 Unemployment Compensation

22.51

260 Workers' Compensation

1,333.34

270 Group Insurance – Self-Insurance

37,654.03

Total Personnel Services – Employee Benefits

\$93,508.37

Total 2513 Receiving and Disbursing Funds Services

\$219,853.79

General Fund (10)

2514 Payroll Services

	<u>Elementary</u>	<u>Secondary</u>	<u>Federal</u>	<u>Total</u>
100 Personnel Services – Salaries				
100 Personnel Services – Salaries				116,449.35
Total Personnel Services – Salaries				\$116,449.35
200 Personnel Services – Employee Benefits				
210 Group Insurance – Contracted Provider				1,017.65
220 Social Security Contributions				8,588.28
230 PSERS Retirement Contributions				40,773.05
250 Unemployment Compensation				20.70
260 Workers' Compensation				1,226.10
270 Group Insurance – Self-Insurance				54,955.84
Total Personnel Services – Employee Benefits				\$106,581.62
600 Supplies				
610 General Supplies				343.75
Total Supplies				\$343.75
Total 2514 Payroll Services				\$223,374.72

General Fund (10)

	<u>Elementary</u>	<u>Secondary</u>	<u>Federal</u>	<u>Total</u>
2515 Financial Accounting Services				
100 Personnel Services – Salaries				
100 Personnel Services – Salaries				156,114.00
Total Personnel Services – Salaries				\$156,114.00
200 Personnel Services – Employee Benefits				
220 Social Security Contributions				11,379.13
230 PSERS Retirement Contributions				54,612.08
270 Group Insurance – Self-Insurance				9,000.78
Total Personnel Services – Employee Benefits				\$74,991.99
600 Supplies				
610 General Supplies				49.99
Total Supplies				\$49.99
Total 2515 Financial Accounting Services				\$231,155.98

LEA : 123464502 Lower Merion SD

Printed 11/22/2022 3:08:46 PM

General Fund (10)

	<u>Elementary</u>	<u>Secondary</u>	<u>Federal</u>	<u>Total</u>
2519 Other Fiscal Services				
100 Personnel Services – Salaries				
100 Personnel Services – Salaries				40,740.50
Total Personnel Services – Salaries				\$40,740.50
200 Personnel Services – Employee Benefits				
220 Social Security Contributions				2,890.92
230 PSERS Retirement Contributions				13,443.59
Total Personnel Services – Employee Benefits				\$16,334.51
300 Purchased Professional and Technical Services				
330 Other Professional Services				9,975.00
340 Technical Services				73,561.74
Total Purchased Professional and Technical Services				\$83,536.74
400 Purchased Property Services				
430 Repairs and Maintenance Services				4,802.74
440 Rentals				4,218.74
Total Purchased Property Services				\$9,021.48
500 Other Purchased Services				
530 Communications				5,694.94
580 Travel				56.45
Total Other Purchased Services				\$5,751.39
600 Supplies				
610 General Supplies				5,945.94
650 Supplies & Fees – Technology Related				399.95
Total Supplies				\$6,345.89
800 Other Objects				
810 Dues and Fees				50,097.26
Total Other Objects				\$50,097.26
Total 2519 Other Fiscal Services				\$211,827.77

LEA : 123464502 Lower Merion SD

Printed 11/22/2022 3:08:46 PM

General Fund (10)

2600 Operation and Maintenance of Plant Services

Elementary

Secondary

Federal

Total

800 Other Objects

810 Dues and Fees

1,092.19

890 Miscellaneous Expenditures

383.16

Total Other Objects

\$1,475.35

Total 2600 Operation and Maintenance of Plant Services

\$653,718.98

\$680,370.18

\$163,455.00

\$20,957,457.64

General Fund (10)

2610 Supervision of Operation and Maintenance of Plant Services

Elementary Secondary Federal Total

100 Personnel Services – Salaries				
100 Personnel Services – Salaries				1,095,833.88
Total Personnel Services – Salaries				\$1,095,833.88
200 Personnel Services – Employee Benefits				
210 Group Insurance – Contracted Provider				4,521.76
220 Social Security Contributions				83,956.17
230 PSERS Retirement Contributions				375,584.16
250 Unemployment Compensation				149.92
260 Workers' Compensation				8,882.27
270 Group Insurance – Self-Insurance				201,606.83
280 Other Post-Employment Benefits (OPEB)				44,700.00
Total Personnel Services – Employee Benefits				\$719,401.11
400 Purchased Property Services				
430 Repairs and Maintenance Services				185.57
440 Rentals				41.39
Total Purchased Property Services				\$226.96
500 Other Purchased Services				
530 Communications				60.84
580 Travel				135.03
Total Other Purchased Services				\$195.87
600 Supplies				
630 Food				45.00
Total Supplies				\$45.00
Total 2610 Supervision of Operation and Maintenance of Plant Services				\$1,815,702.82

General Fund (10)

	<u>Elementary</u>	<u>Secondary</u>	<u>Federal</u>	<u>Total</u>
2611 Supervision of Operation and Maintenance of Plant Services – Head of Component				
100 Personnel Services – Salaries				
100 Personnel Services – Salaries				161,523.00
Total Personnel Services – Salaries				\$161,523.00
200 Personnel Services – Employee Benefits				
210 Group Insurance – Contracted Provider				722.97
220 Social Security Contributions				11,317.98
230 PSERS Retirement Contributions				56,504.31
250 Unemployment Compensation				28.77
260 Workers' Compensation				1,704.58
270 Group Insurance – Self-Insurance				27,671.58
Total Personnel Services – Employee Benefits				\$97,950.19
400 Purchased Property Services				
430 Repairs and Maintenance Services				143.65
440 Rentals				32.09
Total Purchased Property Services				\$175.74
Total 2611 Supervision of Operation and Maintenance of Plant Services – Head of Component				\$259,648.93

General Fund (10)

2619 Supervision of Operation and Maintenance of Plant Services – All Other Supervision

Elementary

Secondary

Federal

Total

100 Personnel Services – Salaries

100 Personnel Services – Salaries

934,310.88

Total Personnel Services – Salaries

\$934,310.88

200 Personnel Services – Employee Benefits

210 Group Insurance – Contracted Provider

3,798.79

220 Social Security Contributions

72,638.19

230 PSERS Retirement Contributions

319,079.85

250 Unemployment Compensation

121.15

260 Workers' Compensation

7,177.69

270 Group Insurance – Self-Insurance

173,935.25

280 Other Post-Employment Benefits (OPEB)

44,700.00

Total Personnel Services – Employee Benefits

\$621,450.92

400 Purchased Property Services

430 Repairs and Maintenance Services

41.92

440 Rentals

9.30

Total Purchased Property Services

\$51.22

500 Other Purchased Services

530 Communications

60.84

580 Travel

135.03

Total Other Purchased Services

\$195.87

600 Supplies

630 Food

45.00

Total Supplies

\$45.00

Total 2619 Supervision of Operation and Maintenance of Plant Services – All Other Supervision

\$1,556,053.89

LEA : 123464502 Lower Merion SD

Printed 11/22/2022 3:08:46 PM

General Fund (10)

2620 Operation of Buildings Services

100 Personnel Services – Salaries

	<u>Elementary</u>	<u>Secondary</u>	<u>Federal</u>	<u>Total</u>
100 Personnel Services – Salaries			163,455.00	6,449,291.35

Total Personnel Services – Salaries			\$163,455.00	\$6,449,291.35
--	--	--	---------------------	-----------------------

200 Personnel Services – Employee Benefits

210 Group Insurance – Contracted Provider				32,860.99
220 Social Security Contributions				496,697.40
230 PSERS Retirement Contributions				2,261,829.28
250 Unemployment Compensation				787.21
260 Workers' Compensation				46,637.69
270 Group Insurance – Self-Insurance				1,698,254.25
280 Other Post-Employment Benefits (OPEB)				1,625.00

Total Personnel Services – Employee Benefits				\$4,538,691.82
---	--	--	--	-----------------------

300 Purchased Professional and Technical Services

330 Other Professional Services				341,322.06
---------------------------------	--	--	--	------------

Total Purchased Professional and Technical Services				\$341,322.06
--	--	--	--	---------------------

400 Purchased Property Services

410 Cleaning Services				49,433.11
420 Utility Services				292,189.82
430 Repairs and Maintenance Services				518,361.66
440 Rentals				285,303.35
460 Extermination Services				14,334.00

Total Purchased Property Services				\$1,159,621.94
--	--	--	--	-----------------------

500 Other Purchased Services

521 Fire Insurance				435,865.00
522 Automotive Liability Insurance				77,514.00
523 General Property and Liability Insurance				321,174.00
529 Other Insurance				481,985.59
530 Communications				241,931.27
550 Printing and Binding				5,153.88
580 Travel				778.91

Total Other Purchased Services				\$1,564,402.65
---------------------------------------	--	--	--	-----------------------

600 Supplies

610 General Supplies	583,120.82	613,257.02		1,196,377.84
620 Energy				1,423,104.39
650 Supplies & Fees – Technology Related				95,518.94

Total Supplies	\$583,120.82	\$613,257.02		\$2,715,001.17
-----------------------	---------------------	---------------------	--	-----------------------

700 Property

752 Capital Equipment – Original and Additional				11,877.00
---	--	--	--	-----------

Total Property				\$11,877.00
-----------------------	--	--	--	--------------------

800 Other Objects

810 Dues and Fees				1,092.19
-------------------	--	--	--	----------

LEA : 123464502 Lower Merion SD

Printed 11/22/2022 3:08:46 PM

General Fund (10)

2620 Operation of Buildings Services

	<u>Elementary</u>	<u>Secondary</u>	<u>Federal</u>	<u>Total</u>
Total Other Objects				\$1,092.19
Total 2620 Operation of Buildings Services	\$583,120.82	\$613,257.02	\$163,455.00	\$16,781,300.18

General Fund (10)

	<u>Elementary</u>	<u>Secondary</u>	<u>Federal</u>	<u>Total</u>
2630 Care and Upkeep of Grounds Services				
100 Personnel Services – Salaries				
100 Personnel Services – Salaries				602,191.07
Total Personnel Services – Salaries				\$602,191.07
200 Personnel Services – Employee Benefits				
210 Group Insurance – Contracted Provider				3,623.32
220 Social Security Contributions				45,167.37
230 PSERS Retirement Contributions				208,688.63
250 Unemployment Compensation				98.42
260 Workers' Compensation				5,830.86
270 Group Insurance – Self-Insurance				175,677.41
Total Personnel Services – Employee Benefits				\$439,086.01
400 Purchased Property Services				
410 Cleaning Services				258,269.90
430 Repairs and Maintenance Services				168,622.06
440 Rentals				53,111.47
Total Purchased Property Services				\$480,003.43
500 Other Purchased Services				
580 Travel				65.17
Total Other Purchased Services				\$65.17
600 Supplies				
610 General Supplies	70,517.59	67,032.59		137,550.18
Total Supplies	\$70,517.59	\$67,032.59		\$137,550.18
700 Property				
752 Capital Equipment – Original and Additional				1,629.40
Total Property				\$1,629.40
Total 2630 Care and Upkeep of Grounds Services	\$70,517.59	\$67,032.59		\$1,660,525.26

General Fund (10)

	<u>Elementary</u>	<u>Secondary</u>	<u>Federal</u>	<u>Total</u>
2650 Vehicle Operation and Maintenance Services (Other Than Student Transportation Vehicles)				
400 <u>Purchased Property Services</u>				
430 Repairs and Maintenance Services				4,539.72
Total Purchased Property Services				\$4,539.72
600 <u>Supplies</u>				
610 General Supplies	80.57	80.57		161.14
Total Supplies	\$80.57	\$80.57		\$161.14
700 <u>Property</u>				
762 Capitalized Equipment - Replacement				41,620.05
Total Property				\$41,620.05
800 <u>Other Objects</u>				
890 Miscellaneous Expenditures				383.16
Total Other Objects				\$383.16
Total 2650 Vehicle Operation and Maintenance Services (Other Than Student Transportation Vehicles)	\$80.57	\$80.57		\$46,704.07

General Fund (10)

2660 Safety and Security Services

Elementary

Secondary

Federal

Total

300 Purchased Professional and Technical Services

350 Security / Safety Services

506,548.08

Total Purchased Professional and Technical Services

\$506,548.08

400 Purchased Property Services

410 Cleaning Services

2,672.76

430 Repairs and Maintenance Services

1,769.45

Total Purchased Property Services

\$4,442.21

Total 2660 Safety and Security Services

\$510,990.29

LEA : 123464502 Lower Merion SD

Printed 11/22/2022 3:08:46 PM

General Fund (10)

	<u>Elementary</u>	<u>Secondary</u>	<u>Federal</u>	<u>Total</u>
2690 Other Operation and Maintenance of Plant Services				
300 <u>Purchased Professional and Technical Services</u>				
330 Other Professional Services				13,812.64
Total Purchased Professional and Technical Services				\$13,812.64
500 <u>Other Purchased Services</u>				
530 Communications				124,815.92
Total Other Purchased Services				\$124,815.92
600 <u>Supplies</u>				
650 Supplies & Fees – Technology Related				3,606.46
Total Supplies				\$3,606.46
Total 2690 Other Operation and Maintenance of Plant Services				\$142,235.02

General Fund (10)

2700 Student Transportation Services

Elementary Secondary Federal Total

100	<u>Personnel Services – Salaries</u>			
	100 Personnel Services – Salaries			6,972,192.20
Total Personnel Services – Salaries				\$6,972,192.20
200	<u>Personnel Services – Employee Benefits</u>			
	210 Group Insurance – Contracted Provider			47,152.01
	220 Social Security Contributions			526,584.97
	230 PSERS Retirement Contributions			2,417,235.62
	250 Unemployment Compensation			952.31
	260 Workers' Compensation			56,419.70
	270 Group Insurance – Self-Insurance			2,613,441.37
	280 Other Post-Employment Benefits (OPEB)			14,525.00
Total Personnel Services – Employee Benefits				\$5,676,310.98
300	<u>Purchased Professional and Technical Services</u>			
	330 Other Professional Services			19,163.56
Total Purchased Professional and Technical Services				\$19,163.56
400	<u>Purchased Property Services</u>			
	430 Repairs and Maintenance Services			149,495.79
	440 Rentals			5,526.14
Total Purchased Property Services				\$155,021.93
500	<u>Other Purchased Services</u>			
	513 Contracted Carriers			2,338,723.77
	516 Student Transportation Services From the IU			55,533.92
	522 Automotive Liability Insurance			142,816.00
	524 Other Pupil Transportation Insurance			46,672.00
	530 Communications			33,379.42
	550 Printing and Binding			2,133.00
	580 Travel			5,978.51
Total Other Purchased Services				\$2,625,236.62
600	<u>Supplies</u>			
	610 General Supplies			407,364.64
	620 Energy			397,340.47
	630 Food			39.99
	650 Supplies & Fees – Technology Related			58,410.92
Total Supplies				\$863,156.02
800	<u>Other Objects</u>			
	810 Dues and Fees			2,702.37
	890 Miscellaneous Expenditures			89.92
Total Other Objects				\$2,792.29
Total 2700 Student Transportation Services				\$16,313,873.60

General Fund (10)

2710 Supervision of Student Transportation Services

Elementary Secondary Federal Total

100	<u>Personnel Services – Salaries</u>			
	100 Personnel Services – Salaries			802,818.35
Total Personnel Services – Salaries				\$802,818.35
200	<u>Personnel Services – Employee Benefits</u>			
	210 Group Insurance – Contracted Provider			3,971.89
	220 Social Security Contributions			60,504.83
	230 PSERS Retirement Contributions			276,715.37
	250 Unemployment Compensation			70.15
	260 Workers' Compensation			4,155.98
	270 Group Insurance – Self-Insurance			225,043.68
Total Personnel Services – Employee Benefits				\$570,461.90
400	<u>Purchased Property Services</u>			
	430 Repairs and Maintenance Services			1,052.84
	440 Rentals			169.33
Total Purchased Property Services				\$1,222.17
500	<u>Other Purchased Services</u>			
	530 Communications			141.75
	550 Printing and Binding			2,133.00
	580 Travel			163.54
Total Other Purchased Services				\$2,438.29
600	<u>Supplies</u>			
	610 General Supplies			8,059.37
	630 Food			39.99
	650 Supplies & Fees – Technology Related			39,557.58
Total Supplies				\$47,656.94
800	<u>Other Objects</u>			
	810 Dues and Fees			1,635.00
Total Other Objects				\$1,635.00
Total 2710 Supervision of Student Transportation Services				\$1,426,232.65

General Fund (10)

2711 Supervision of Student Transportation Services – Head of Component

Elementary

Secondary

Federal

Total

100 Personnel Services – Salaries

100 Personnel Services – Salaries

188,800.41

Total Personnel Services – Salaries

\$188,800.41

200 Personnel Services – Employee Benefits

210 Group Insurance – Contracted Provider

1,007.81

220 Social Security Contributions

14,247.31

230 PSERS Retirement Contributions

66,080.19

250 Unemployment Compensation

24.61

260 Workers' Compensation

1,458.06

270 Group Insurance – Self-Insurance

51,097.70

Total Personnel Services – Employee Benefits

\$133,915.68

400 Purchased Property Services

430 Repairs and Maintenance Services

1,031.88

440 Rentals

164.68

Total Purchased Property Services

\$1,196.56

600 Supplies

650 Supplies & Fees – Technology Related

3,581.09

Total Supplies

\$3,581.09

800 Other Objects

810 Dues and Fees

1,635.00

Total Other Objects

\$1,635.00

Total 2711 Supervision of Student Transportation Services – Head of Component

\$329,128.74

General Fund (10)

2720 Vehicle Operation Services

Elementary Secondary Federal Total

100	<u>Personnel Services – Salaries</u>			
	100 Personnel Services – Salaries			4,938,479.69
Total Personnel Services – Salaries				\$4,938,479.69
200	<u>Personnel Services – Employee Benefits</u>			
	210 Group Insurance – Contracted Provider			35,901.43
	220 Social Security Contributions			373,198.61
	230 PSERS Retirement Contributions			1,712,957.78
	250 Unemployment Compensation			701.77
	260 Workers' Compensation			41,576.30
	270 Group Insurance – Self-Insurance			2,012,286.35
	280 Other Post-Employment Benefits (OPEB)			12,879.17
Total Personnel Services – Employee Benefits				\$4,189,501.41
300	<u>Purchased Professional and Technical Services</u>			
	330 Other Professional Services			16,992.13
Total Purchased Professional and Technical Services				\$16,992.13
400	<u>Purchased Property Services</u>			
	430 Repairs and Maintenance Services			6,581.46
Total Purchased Property Services				\$6,581.46
500	<u>Other Purchased Services</u>			
	513 Contracted Carriers			2,073,722.55
	516 Student Transportation Services From the IU			55,533.92
	522 Automotive Liability Insurance			126,633.49
	524 Other Pupil Transportation Insurance			41,383.59
	530 Communications			29,471.50
	580 Travel			4,950.01
Total Other Purchased Services				\$2,331,695.06
600	<u>Supplies</u>			
	610 General Supplies			32,008.25
	620 Energy			324,059.14
	650 Supplies & Fees – Technology Related			5,244.37
Total Supplies				\$361,311.76
800	<u>Other Objects</u>			
	810 Dues and Fees			946.43
	890 Miscellaneous Expenditures			79.73
Total Other Objects				\$1,026.16
Total 2720 Vehicle Operation Services				\$11,845,587.67

LEA : 123464502 Lower Merion SD

Printed 11/22/2022 3:08:46 PM

General Fund (10)

2730 Monitoring Services

Elementary

Secondary

Federal

Total

600 Supplies

610 General Supplies

1,522.58

Total Supplies

\$1,522.58

Total 2730 Monitoring Services

\$1,522.58

General Fund (10)

2740 Vehicle Servicing and Maintenance Services

Elementary

Secondary

Federal

Total

100 Personnel Services – Salaries

100 Personnel Services – Salaries

571,854.54

Total Personnel Services – Salaries

\$571,854.54

200 Personnel Services – Employee Benefits

210 Group Insurance – Contracted Provider

2,690.84

220 Social Security Contributions

43,052.18

230 PSERS Retirement Contributions

198,867.13

250 Unemployment Compensation

90.71

260 Workers' Compensation

5,374.38

270 Group Insurance – Self-Insurance

118,961.06

Total Personnel Services – Employee Benefits

\$369,036.30

400 Purchased Property Services

430 Repairs and Maintenance Services

141,020.45

440 Rentals

5,356.81

Total Purchased Property Services

\$146,377.26

600 Supplies

610 General Supplies

361,684.10

620 Energy

31,869.78

650 Supplies & Fees – Technology Related

12,150.00

Total Supplies

\$405,703.88

Total 2740 Vehicle Servicing and Maintenance Services

\$1,492,971.98

General Fund (10)

2790 Other Student Transportation Services	<u>Elementary</u>	<u>Secondary</u>	<u>Federal</u>	<u>Total</u>
100 Personnel Services – Salaries				
100 Personnel Services – Salaries				27,950.78
Total Personnel Services – Salaries				\$27,950.78
200 Personnel Services – Employee Benefits				
220 Social Security Contributions				2,138.26
230 PSERS Retirement Contributions				9,796.28
Total Personnel Services – Employee Benefits				\$11,934.54
500 Other Purchased Services				
580 Travel				232.40
Total Other Purchased Services				\$232.40
600 Supplies				
650 Supplies & Fees – Technology Related				788.79
Total Supplies				\$788.79
Total 2790 Other Student Transportation Services				\$40,906.51

General Fund (10)

2800 Support Services – Central

Elementary Secondary Federal Total

100	<u>Personnel Services – Salaries</u>				
	100 Personnel Services – Salaries				2,733,681.01
	Total Personnel Services – Salaries				\$2,733,681.01
200	<u>Personnel Services – Employee Benefits</u>				
	210 Group Insurance – Contracted Provider				8,829.44
	220 Social Security Contributions				207,626.21
	230 PSERS Retirement Contributions				950,160.06
	240 Tuition Reimbursement				9,368.60
	250 Unemployment Compensation				162.24
	260 Workers' Compensation				9,611.57
	270 Group Insurance – Self-Insurance				528,896.87
	299 All Other Employee Benefits				37,290.00
	Total Personnel Services – Employee Benefits				\$1,751,944.99
300	<u>Purchased Professional and Technical Services</u>				
	330 Other Professional Services				220,769.04
	340 Technical Services				209,785.40
	360 Employee Training and Development Services				87,482.37
	Total Purchased Professional and Technical Services				\$518,036.81
400	<u>Purchased Property Services</u>				
	430 Repairs and Maintenance Services				276,363.90
	440 Rentals				9.30
	Total Purchased Property Services				\$276,373.20
500	<u>Other Purchased Services</u>				
	520 Insurance – General				99,201.31
	530 Communications				130,453.87
	549 Other Advertising/Public Relations				31,716.32
	580 Travel				3,958.25
	Total Other Purchased Services				\$265,329.75
600	<u>Supplies</u>				
	610 General Supplies				76,193.56
	630 Food				76.87
	640 Books and Periodicals				260.88
	650 Supplies & Fees – Technology Related				2,283,928.58
	Total Supplies				\$2,360,459.89
800	<u>Other Objects</u>				
	810 Dues and Fees				7,397.19
	Total Other Objects				\$7,397.19
	Total 2800 Support Services – Central				\$7,913,222.84

General Fund (10)

2810 Planning, Research, Development and Evaluation Services

Elementary

Secondary

Federal

Total

100 Personnel Services – Salaries

100 Personnel Services – Salaries

70,600.44

Total Personnel Services – Salaries

\$70,600.44

200 Personnel Services – Employee Benefits

220 Social Security Contributions

5,393.89

230 PSERS Retirement Contributions

21,142.91

Total Personnel Services – Employee Benefits

\$26,536.80

300 Purchased Professional and Technical Services

330 Other Professional Services

183,250.00

Total Purchased Professional and Technical Services

\$183,250.00

600 Supplies

610 General Supplies

49.42

630 Food

52.87

640 Books and Periodicals

45.00

650 Supplies & Fees – Technology Related

58,215.41

Total Supplies

\$58,362.70

Total 2810 Planning, Research, Development and Evaluation Services

\$338,749.94

General Fund (10)

2830 Staff Services

Elementary Secondary Federal Total

100	<u>Personnel Services – Salaries</u>			
	100 Personnel Services – Salaries			597,638.49
Total Personnel Services – Salaries				\$597,638.49
200	<u>Personnel Services – Employee Benefits</u>			
	210 Group Insurance – Contracted Provider			2,524.01
	220 Social Security Contributions			48,021.96
	230 PSERS Retirement Contributions			209,271.84
	240 Tuition Reimbursement			9,368.60
	250 Unemployment Compensation			105.92
	260 Workers' Compensation			6,274.83
	270 Group Insurance – Self-Insurance			120,960.78
	299 All Other Employee Benefits			37,290.00
Total Personnel Services – Employee Benefits				\$433,817.94
300	<u>Purchased Professional and Technical Services</u>			
	330 Other Professional Services			37,519.04
	360 Employee Training and Development Services			87,482.37
Total Purchased Professional and Technical Services				\$125,001.41
400	<u>Purchased Property Services</u>			
	430 Repairs and Maintenance Services			20.96
	440 Rentals			4.65
Total Purchased Property Services				\$25.61
500	<u>Other Purchased Services</u>			
	530 Communications			665.46
	549 Other Advertising/Public Relations			31,716.32
	580 Travel			3,439.68
Total Other Purchased Services				\$35,821.46
600	<u>Supplies</u>			
	610 General Supplies			21,566.54
	630 Food			24.00
	650 Supplies & Fees – Technology Related			209,253.98
Total Supplies				\$230,844.52
800	<u>Other Objects</u>			
	810 Dues and Fees			7,235.00
Total Other Objects				\$7,235.00
Total 2830 Staff Services				\$1,430,384.43

LEA : 123464502 Lower Merion SD

Printed 11/22/2022 3:08:46 PM

General Fund (10)

2831 Supervision of Staff Services

Elementary

Secondary

Federal

Total

100 Personnel Services – Salaries

100 Personnel Services – Salaries

140,000.00

Total Personnel Services – Salaries

\$140,000.00

200 Personnel Services – Employee Benefits

210 Group Insurance – Contracted Provider

618.71

220 Social Security Contributions

10,829.05

230 PSERS Retirement Contributions

49,068.06

250 Unemployment Compensation

24.94

260 Workers' Compensation

1,477.44

270 Group Insurance – Self-Insurance

25,940.12

Total Personnel Services – Employee Benefits

\$87,958.32

Total 2831 Supervision of Staff Services

\$227,958.32

General Fund (10)

2834 Staff Development Services – Non-Instructional, Certified Staff Only	<u>Elementary</u>	<u>Secondary</u>	<u>Federal</u>	<u>Total</u>
200 Personnel Services – Employee Benefits				
220 Social Security Contributions				70.27
240 Tuition Reimbursement				3,368.60
Total Personnel Services – Employee Benefits				\$3,438.87
300 Purchased Professional and Technical Services				
330 Other Professional Services				6,175.00
360 Employee Training and Development Services				26,376.02
Total Purchased Professional and Technical Services				\$32,551.02
500 Other Purchased Services				
580 Travel				827.13
Total Other Purchased Services				\$827.13
600 Supplies				
650 Supplies & Fees – Technology Related				69.00
Total Supplies				\$69.00
800 Other Objects				
810 Dues and Fees				6,295.00
Total Other Objects				\$6,295.00
Total 2834 Staff Development Services – Non-Instructional, Certified Staff Only				\$43,181.02

General Fund (10)

2836 Staff Development Services – Non-Instructional, Non-Certified Staff Only	<u>Elementary</u>	<u>Secondary</u>	<u>Federal</u>	<u>Total</u>
100 Personnel Services – Salaries				
100 Personnel Services – Salaries				3,046.39
Total Personnel Services – Salaries				\$3,046.39
200 Personnel Services – Employee Benefits				
220 Social Security Contributions				206.90
230 PSERS Retirement Contributions				1,067.72
240 Tuition Reimbursement				6,000.00
Total Personnel Services – Employee Benefits				\$7,274.62
300 Purchased Professional and Technical Services				
360 Employee Training and Development Services				61,106.35
Total Purchased Professional and Technical Services				\$61,106.35
500 Other Purchased Services				
580 Travel				2,612.55
Total Other Purchased Services				\$2,612.55
Total 2836 Staff Development Services – Non-Instructional, Non-Certified Staff Only				\$74,039.91

General Fund (10)

2840 Data Processing Services

Elementary Secondary Federal Total

100	<u>Personnel Services – Salaries</u>			
	100 Personnel Services – Salaries			2,065,442.08
Total Personnel Services – Salaries				\$2,065,442.08
200	<u>Personnel Services – Employee Benefits</u>			
	210 Group Insurance – Contracted Provider			6,305.43
	220 Social Security Contributions			154,210.36
	230 PSERS Retirement Contributions			719,745.31
	250 Unemployment Compensation			56.32
	260 Workers' Compensation			3,336.74
	270 Group Insurance – Self-Insurance			407,936.09
Total Personnel Services – Employee Benefits				\$1,291,590.25
300	<u>Purchased Professional and Technical Services</u>			
	340 Technical Services			209,785.40
Total Purchased Professional and Technical Services				\$209,785.40
400	<u>Purchased Property Services</u>			
	430 Repairs and Maintenance Services			276,342.94
	440 Rentals			4.65
Total Purchased Property Services				\$276,347.59
500	<u>Other Purchased Services</u>			
	520 Insurance – General			99,201.31
	530 Communications			129,788.41
	580 Travel			518.57
Total Other Purchased Services				\$229,508.29
600	<u>Supplies</u>			
	610 General Supplies			54,577.60
	640 Books and Periodicals			215.88
	650 Supplies & Fees – Technology Related			2,016,459.19
Total Supplies				\$2,071,252.67
800	<u>Other Objects</u>			
	810 Dues and Fees			162.19
Total Other Objects				\$162.19
Total 2840 Data Processing Services				\$6,144,088.47

General Fund (10)

2900 Other Support Services

Elementary Secondary Federal Total

100	<u>Personnel Services – Salaries</u>			
	100 Personnel Services – Salaries			618,253.14
Total Personnel Services – Salaries				\$618,253.14
200	<u>Personnel Services – Employee Benefits</u>			
	220 Social Security Contributions			47,046.27
	230 PSERS Retirement Contributions			157,657.74
	280 Other Post-Employment Benefits (OPEB)			1,100.00
Total Personnel Services – Employee Benefits				\$205,804.01
300	<u>Purchased Professional and Technical Services</u>			
	330 Other Professional Services			85,369.68
Total Purchased Professional and Technical Services				\$85,369.68
500	<u>Other Purchased Services</u>			
	595 IU Payments By Withholding			138,995.95
	596 Direct Payments To Intermediate Units			9,276.77
Total Other Purchased Services				\$148,272.72
Total 2900 Other Support Services				\$1,057,699.55

General Fund (10)

2910 Support Services Not Listed Elsewhere In the 2000 Series

Elementary Secondary Federal Total

100 Personnel Services – Salaries				
100 Personnel Services – Salaries				618,253.14
Total Personnel Services – Salaries				\$618,253.14
200 Personnel Services – Employee Benefits				
220 Social Security Contributions				47,046.27
230 PSERS Retirement Contributions				157,657.74
280 Other Post-Employment Benefits (OPEB)				1,100.00
Total Personnel Services – Employee Benefits				\$205,804.01
300 Purchased Professional and Technical Services				
330 Other Professional Services				85,369.68
Total Purchased Professional and Technical Services				\$85,369.68
500 Other Purchased Services				
595 IU Payments By Withholding				138,995.95
596 Direct Payments To Intermediate Units				9,276.77
Total Other Purchased Services				\$148,272.72
Total 2910 Support Services Not Listed Elsewhere In the 2000 Series				\$1,057,699.55

General Fund (10)

3000 Operation of Non-Instructional Services

Total

100 Personnel Services – Salaries

100 Personnel Services – Salaries 3,375,339.72

Total Personnel Services – Salaries \$3,375,339.72

200 Personnel Services – Employee Benefits

210 Group Insurance – Contracted Provider 1,435.73

220 Social Security Contributions 255,921.93

230 PSERS Retirement Contributions 1,139,218.87

250 Unemployment Compensation 45.85

260 Workers' Compensation 2,722.74

270 Group Insurance – Self-Insurance 66,136.17

Total Personnel Services – Employee Benefits \$1,465,481.29

300 Purchased Professional and Technical Services

330 Other Professional Services 606,071.65

Total Purchased Professional and Technical Services \$606,071.65

400 Purchased Property Services

430 Repairs and Maintenance Services 28,085.28

440 Rentals 86,401.61

Total Purchased Property Services \$114,486.89

500 Other Purchased Services

510 Student Transportation Services 195,514.81

520 Insurance – General 33,990.00

530 Communications 12.39

580 Travel 28,624.79

Total Other Purchased Services \$258,141.99

600 Supplies

610 General Supplies 355,679.59

630 Food 2,039.02

650 Supplies & Fees – Technology Related 25,398.21

Total Supplies \$383,116.82

800 Other Objects

810 Dues and Fees 49,316.91

890 Miscellaneous Expenditures 140.88

Total Other Objects \$49,457.79

Total 3000 Operation of Non-Instructional Services \$6,252,096.15

LEA : 123464502 Lower Merion SD

Printed 11/22/2022 3:09:00 PM

General Fund (10)

3200 Student Activities

Elementary Secondary Federal Total

100	<u>Personnel Services – Salaries</u>			
	100 Personnel Services – Salaries			3,375,339.72
Total Personnel Services – Salaries				\$3,375,339.72
200	<u>Personnel Services – Employee Benefits</u>			
	210 Group Insurance – Contracted Provider			1,435.73
	220 Social Security Contributions			255,921.93
	230 PSERS Retirement Contributions			1,139,218.87
	250 Unemployment Compensation			45.85
	260 Workers' Compensation			2,722.74
	270 Group Insurance – Self-Insurance			66,136.17
Total Personnel Services – Employee Benefits				\$1,465,481.29
300	<u>Purchased Professional and Technical Services</u>			
	330 Other Professional Services			374,148.65
Total Purchased Professional and Technical Services				\$374,148.65
400	<u>Purchased Property Services</u>			
	430 Repairs and Maintenance Services			28,085.28
	440 Rentals			86,401.61
Total Purchased Property Services				\$114,486.89
500	<u>Other Purchased Services</u>			
	510 Student Transportation Services			195,514.81
	520 Insurance – General			33,990.00
	530 Communications			12.39
	580 Travel			28,624.79
Total Other Purchased Services				\$258,141.99
600	<u>Supplies</u>			
	610 General Supplies			350,619.78
	630 Food			1,496.52
	650 Supplies & Fees – Technology Related			25,398.21
Total Supplies				\$377,514.51
800	<u>Other Objects</u>			
	810 Dues and Fees			49,316.91
	890 Miscellaneous Expenditures			140.88
Total Other Objects				\$49,457.79
Total 3200 Student Activities				\$6,014,570.84

LEA : 123464502 Lower Merion SD

Printed 11/22/2022 3:09:00 PM

General Fund (10)

3300 Community Services

Elementary

Secondary

Federal

Total

300 Purchased Professional and Technical Services

330 Other Professional Services

231,923.00

Total Purchased Professional and Technical Services

\$231,923.00

600 Supplies

610 General Supplies

5,059.81

630 Food

542.50

Total Supplies

\$5,602.31

Total 3300 Community Services

\$237,525.31

LEA : 123464502 Lower Merion SD

Printed 11/22/2022 3:09:11 PM

General Fund (10)

5000 Other Expenditures and Financing Uses

Total

800 Other Objects

830 Interest	9,239,806.25
880 Refunds of Prior Years' Receipts	15,000,000.00

Total Other Objects	\$24,239,806.25
----------------------------	------------------------

900 Other Uses of Funds

910 Redemption of Principal	20,585,514.98
932 Capital Reserve Fund Transfers Applicable To Fund 32	6,889,178.80

Total Other Uses of Funds	\$27,474,693.78
----------------------------------	------------------------

Total 5000 Other Expenditures and Financing Uses	\$51,714,500.03
---	------------------------

LEA : 123464502 Lower Merion SD

Printed 11/22/2022 3:09:11 PM

General Fund (10)

5100 Debt Service / Other Expenditures and Financing Uses	<u>Elementary</u>	<u>Secondary</u>	<u>Federal</u>	<u>Total</u>
800 Other Objects				
830 Interest				9,239,806.25
880 Refunds of Prior Years' Receipts				15,000,000.00
Total Other Objects				\$24,239,806.25
900 Other Uses of Funds				
910 Redemption of Principal				20,585,514.98
Total Other Uses of Funds				\$20,585,514.98
Total 5100 Debt Service / Other Expenditures and Financing Uses				\$44,825,321.23

LEA : 123464502 Lower Merion SD

Printed 11/22/2022 3:09:11 PM

General Fund (10)

	<u>Elementary</u>	<u>Secondary</u>	<u>Federal</u>	<u>Total</u>
5110 Debt Service				
800 Other Objects				
830 Interest				9,237,393.03
Total Other Objects				\$9,237,393.03
900 Other Uses of Funds				
910 Redemption of Principal				20,455,000.00
Total Other Uses of Funds				\$20,455,000.00
Total 5110 Debt Service				\$29,692,393.03

LEA : 123464502 Lower Merion SD

Printed 11/22/2022 3:09:11 PM

General Fund (10)

5130 Refund of Prior Year Revenues / Receipts

Elementary

Secondary

Federal

Total

800 Other Objects

880 Refunds of Prior Years' Receipts

15,000,000.00

Total Other Objects

\$15,000,000.00

Total 5130 Refund of Prior Year Revenues / Receipts

\$15,000,000.00

LEA : 123464502 Lower Merion SD

Printed 11/22/2022 3:09:11 PM

General Fund (10)

	<u>Elementary</u>	<u>Secondary</u>	<u>Federal</u>	<u>Total</u>
5140 Leases				
800 <u>Other Objects</u>				
830 Interest				2,413.22
Total Other Objects				\$2,413.22
900 <u>Other Uses of Funds</u>				
910 Redemption of Principal				130,514.98
Total Other Uses of Funds				\$130,514.98
Total 5140 Leases				\$132,928.20

LEA : 123464502 Lower Merion SD

Printed 11/22/2022 3:09:11 PM

General Fund (10)

5200 Interfund Transfers – Out

Elementary

Secondary

Federal

Total

900 Other Uses of Funds

932 Capital Reserve Fund Transfers Applicable To Fund 32

6,889,178.80

Total Other Uses of Funds

\$6,889,178.80

Total 5200 Interfund Transfers – Out

\$6,889,178.80

LEA : 123464502 Lower Merion SD

Printed 11/22/2022 3:09:11 PM

General Fund (10)

5230 Capital Projects Fund Transfers

Elementary

Secondary

Federal

Total

900 Other Uses of Funds

932 Capital Reserve Fund Transfers Applicable To Fund 32

6,889,178.80

Total Other Uses of Funds

\$6,889,178.80

Total 5230 Capital Projects Fund Transfers

\$6,889,178.80

LEA : 123464502 Lower Merion SD

Printed 11/22/2022 3:08:54 PM

Capital Reserve Fund - § 1431 (32)

2000 Support Services

400 Purchased Property Services

430 Repairs and Maintenance Services

23,032.73

450 Construction Services

2,702,277.87

Total Purchased Property Services

\$2,725,310.60

600 Supplies

650 Supplies & Fees – Technology Related

109,767.00

Total Supplies

\$109,767.00

700 Property

762 Capitalized Equipment - Replacement

2,022,565.00

766 Capitalized Technology Equipment – Replacement

274,150.63

Total Property

\$2,296,715.63

Total 2000 Support Services

\$5,131,793.23

LEA : 123464502 Lower Merion SD

Printed 11/22/2022 3:08:54 PM

Capital Reserve Fund - § 1431 (32)

2600 Operation and Maintenance of Plant Services

Elementary

Secondary

Federal

Total

400 Purchased Property Services

430 Repairs and Maintenance Services

23,032.73

450 Construction Services

2,702,277.87

Total Purchased Property Services

\$2,725,310.60

600 Supplies

650 Supplies & Fees – Technology Related

109,767.00

Total Supplies

\$109,767.00

700 Property

762 Capitalized Equipment - Replacement

334,615.00

Total Property

\$334,615.00

Total 2600 Operation and Maintenance of Plant Services

\$3,169,692.60

LEA : 123464502 Lower Merion SD

Printed 11/22/2022 3:08:54 PM

Capital Reserve Fund - § 1431 (32)

2620 Operation of Buildings Services

Elementary

Secondary

Federal

Total

400 Purchased Property Services

430 Repairs and Maintenance Services

23,032.73

450 Construction Services

2,702,277.87

Total Purchased Property Services

\$2,725,310.60

600 Supplies

650 Supplies & Fees – Technology Related

109,767.00

Total Supplies

\$109,767.00

700 Property

762 Capitalized Equipment - Replacement

334,615.00

Total Property

\$334,615.00

Total 2620 Operation of Buildings Services

\$3,169,692.60

LEA : 123464502 Lower Merion SD

Printed 11/22/2022 3:08:54 PM

Capital Reserve Fund - § 1431 (32)

2700 Student Transportation Services

Elementary

Secondary

Federal

Total

700 Property

762 Capitalized Equipment - Replacement

1,687,950.00

Total Property

\$1,687,950.00

Total 2700 Student Transportation Services

\$1,687,950.00

LEA : 123464502 Lower Merion SD

Printed 11/22/2022 3:08:54 PM

Capital Reserve Fund - § 1431 (32)

2720 Vehicle Operation Services

Elementary

Secondary

Federal

Total

700 Property

762 Capitalized Equipment - Replacement

1,687,950.00

Total Property

\$1,687,950.00

Total 2720 Vehicle Operation Services

\$1,687,950.00

LEA : 123464502 Lower Merion SD

Printed 11/22/2022 3:08:54 PM

Capital Reserve Fund - § 1431 (32)

2800 Support Services – Central

Elementary

Secondary

Federal

Total

700 Property

766 Capitalized Technology Equipment – Replacement

274,150.63

Total Property

\$274,150.63

Total 2800 Support Services – Central

\$274,150.63

LEA : 123464502 Lower Merion SD

Printed 11/22/2022 3:08:54 PM

Capital Reserve Fund - § 1431 (32)

2840 Data Processing Services

Elementary

Secondary

Federal

Total

700 Property

766 Capitalized Technology Equipment – Replacement

274,150.63

Total Property

\$274,150.63

Total 2840 Data Processing Services

\$274,150.63

LEA : 123464502 Lower Merion SD

Printed 11/22/2022 3:09:05 PM

Capital Reserve Fund - § 1431 (32)

4000 Facilities Acquisition, Construction and Improvement Services

Total

400 Purchased Property Services

450 Construction Services

1,728,081.52

Total Purchased Property Services

\$1,728,081.52

Total 4000 Facilities Acquisition, Construction and Improvement Services

\$1,728,081.52

LEA : 123464502 Lower Merion SD

Printed 11/22/2022 3:09:05 PM

Capital Reserve Fund - § 1431 (32)

4600 Existing Building Improvement Services

Elementary

Secondary

Federal

Total

400 Purchased Property Services

450 Construction Services

1,728,081.52

Total Purchased Property Services

\$1,728,081.52

Total 4600 Existing Building Improvement Services

\$1,728,081.52

LEA : 123464502 Lower Merion SD

Printed 11/22/2022 3:08:39 PM

Other Capital Projects Fund (39)

1000 Instruction	<u>Total</u>
600 Supplies	
650 Supplies & Fees – Technology Related	280,917.44
Total Supplies	\$280,917.44
Total 1000 Instruction	\$280,917.44

LEA : 123464502 Lower Merion SD

Printed 11/22/2022 3:08:39 PM

Other Capital Projects Fund (39)

1100 Regular Programs – Elementary / Secondary

600 Supplies

650 Supplies & Fees – Technology Related

Total Supplies

Total 1100 Regular Programs – Elementary / Secondary

	<u>Elementary</u>	<u>Secondary</u>	<u>Federal</u>	<u>Total</u>
650 Supplies & Fees – Technology Related	93,461.23	187,456.21		280,917.44
Total Supplies	\$93,461.23	\$187,456.21		\$280,917.44
Total 1100 Regular Programs – Elementary / Secondary	\$93,461.23	\$187,456.21		\$280,917.44

LEA : 123464502 Lower Merion SD

Printed 11/22/2022 3:08:39 PM

Other Capital Projects Fund (39)

1110 Regular Programs

	<u>Elementary</u>	<u>Secondary</u>	<u>Federal</u>	<u>Total</u>
600 <u>Supplies</u>				
650 Supplies & Fees – Technology Related	93,461.23	187,456.21		280,917.44
Total Supplies	\$93,461.23	\$187,456.21		\$280,917.44
Total 1110 Regular Programs	\$93,461.23	\$187,456.21		\$280,917.44

LEA : 123464502 Lower Merion SD

Printed 11/22/2022 3:08:57 PM

Other Capital Projects Fund (39)

2000 Support Services

Total

300 Purchased Professional and Technical Services

330 Other Professional Services 96,814.62

Total Purchased Professional and Technical Services \$96,814.62

400 Purchased Property Services

410 Cleaning Services 1,885.00

450 Construction Services 3,600.00

Total Purchased Property Services \$5,485.00

600 Supplies

650 Supplies & Fees – Technology Related 421,521.96

Total Supplies \$421,521.96

700 Property

752 Capital Equipment – Original and Additional 423,212.43

756 Capitalized Technology Equipment– Original 25,651.08

790 Other Property 438,265.00

Total Property \$887,128.51

Total 2000 Support Services \$1,410,950.09

LEA : 123464502 Lower Merion SD

Printed 11/22/2022 3:08:57 PM

Other Capital Projects Fund (39)

2600 Operation and Maintenance of Plant Services

Elementary

Secondary

Federal

Total

300 Purchased Professional and Technical Services

330 Other Professional Services

96,814.62

Total Purchased Professional and Technical Services

\$96,814.62

400 Purchased Property Services

410 Cleaning Services

1,885.00

450 Construction Services

3,600.00

Total Purchased Property Services

\$5,485.00

700 Property

752 Capital Equipment – Original and Additional

423,212.43

Total Property

\$423,212.43

Total 2600 Operation and Maintenance of Plant Services

\$525,512.05

LEA : 123464502 Lower Merion SD

Printed 11/22/2022 3:08:57 PM

Other Capital Projects Fund (39)

2620 Operation of Buildings Services

Elementary

Secondary

Federal

Total

300 Purchased Professional and Technical Services

330 Other Professional Services

96,814.62

Total Purchased Professional and Technical Services

\$96,814.62

400 Purchased Property Services

410 Cleaning Services

1,885.00

450 Construction Services

3,600.00

Total Purchased Property Services

\$5,485.00

700 Property

752 Capital Equipment – Original and Additional

311,410.43

Total Property

\$311,410.43

Total 2620 Operation of Buildings Services

\$413,710.05

LEA : 123464502 Lower Merion SD

Printed 11/22/2022 3:08:57 PM

Other Capital Projects Fund (39)

2660 Safety and Security Services

Elementary

Secondary

Federal

Total

700 Property

752 Capital Equipment – Original and Additional

111,802.00

Total Property

\$111,802.00

Total 2660 Safety and Security Services

\$111,802.00

LEA : 123464502 Lower Merion SD

Printed 11/22/2022 3:08:57 PM

Other Capital Projects Fund (39)

2800 Support Services – Central

Elementary

Secondary

Federal

Total

600 Supplies

650 Supplies & Fees – Technology Related

421,521.96

Total Supplies

\$421,521.96

700 Property

756 Capitalized Technology Equipment– Original

25,651.08

790 Other Property

438,265.00

Total Property

\$463,916.08

Total 2800 Support Services – Central

\$885,438.04

LEA : 123464502 Lower Merion SD

Printed 11/22/2022 3:08:57 PM

Other Capital Projects Fund (39)

2840 Data Processing Services

Elementary

Secondary

Federal

Total

600 Supplies

650 Supplies & Fees – Technology Related

421,521.96

Total Supplies

\$421,521.96

700 Property

756 Capitalized Technology Equipment– Original

25,651.08

790 Other Property

438,265.00

Total Property

\$463,916.08

Total 2840 Data Processing Services

\$885,438.04

LEA : 123464502 Lower Merion SD

Printed 11/22/2022 3:09:07 PM

Other Capital Projects Fund (39)

4000 Facilities Acquisition, Construction and Improvement Services

Total

300 Purchased Professional and Technical Services

330 Other Professional Services

1,138,311.78

Total Purchased Professional and Technical Services

\$1,138,311.78

400 Purchased Property Services

450 Construction Services

42,722,256.02

Total Purchased Property Services

\$42,722,256.02

Total 4000 Facilities Acquisition, Construction and Improvement Services

\$43,860,567.80

LEA : 123464502 Lower Merion SD

Printed 11/22/2022 3:09:07 PM

Other Capital Projects Fund (39)

4400 Architecture and Engineering Services / Educational Specifications – Improvements

Elementary

Secondary

Federal

Total

300 Purchased Professional and Technical Services

330 Other Professional Services

903,730.70

Total Purchased Professional and Technical Services

\$903,730.70

Total 4400 Architecture and Engineering Services / Educational Specifications – Improvements

\$903,730.70

LEA : 123464502 Lower Merion SD

Printed 11/22/2022 3:09:07 PM

Other Capital Projects Fund (39)

	<u>Elementary</u>	<u>Secondary</u>	<u>Federal</u>	<u>Total</u>
4500 Building Acquisition and Construction Services – Original and Additional				
300 <u>Purchased Professional and Technical Services</u>				
330 Other Professional Services				234,581.08
Total Purchased Professional and Technical Services				\$234,581.08
400 <u>Purchased Property Services</u>				
450 Construction Services				42,722,256.02
Total Purchased Property Services				\$42,722,256.02
Total 4500 Building Acquisition and Construction Services – Original and Additional				\$42,956,837.10

	<u>General Fund(10)</u>	<u>Student Sponsored Activity Fund(21)</u>	<u>Public Purpose Trust(27)</u>	<u>Other Compt Approved (28)</u>	<u>Athletic / Activity(29)</u>
1000 Instruction					
1100 Regular Programs - Elementary / Secondary	116,130,123.11				
1200 Special Programs - Elementary / Secondary	51,613,569.78				
1300 Vocational Education	671,452.00				
1400 Other Instructional Programs - Elementary / Secondary	1,042,992.73				
1500 Nonpublic School Programs	23,254.00				
Total Instruction	\$169,481,391.62				
2000 Support Services					
2100 Support Services - Students	10,928,844.49				
2200 Support Services - Instructional Staff	6,955,293.62				
2300 Support Services - Administration	16,487,113.69				
2400 Support Services - Pupil Health	4,389,262.17				
2500 Support Services - Business	1,365,062.29				
2600 Operation and Maintenance of Plant Services	20,957,457.64				
2700 Student Transportation Services	16,313,873.60				
2800 Support Services - Central	7,913,222.84				
2900 Other Support Services	1,057,699.55				
Total Support Services	\$86,367,829.89				
3000 Operation of Non-Instructional Services					
3200 Student Activities	6,014,570.84				
3300 Community Services	237,525.31				
Total Operation of Non-Instructional Services	\$6,252,096.15				
4000 Facilities Acquisition, Construction and Improvement Services					
4400 Architecture and Engineering Services / Educational Specifications - Improvements					
4500 Building Acquisition and Construction Services - Original and Additional					
4600 Existing Building Improvement Services					
Total Facilities Acquisition, Construction and Improvement					
5000 Other Expenditures and Financing Uses					
5100 Debt Service / Other Expenditures and Financing Uses	44,825,321.23				
5200 Interfund Transfers - Out	6,889,178.80				
Total Other Expenditures and Financing Uses	\$51,714,500.03				
TOTAL ACTUAL EXPENDITURES & OTHER FINANCING USES	\$313,815,817.69				

LEA : 123464502 Lower Merion SD

Printed 11/22/2022 3:09:15 PM

	<u>Capital Reserve (690. 1850)(31)</u>	<u>Capital Reserve (1431)(32)</u>	<u>Other Capital Projects Fund(39)</u>	<u>Debt Service(40)</u>	<u>Permanent(90)</u>
1000 Instruction					
1100 Regular Programs - Elementary / Secondary			280,917.44		
1200 Special Programs - Elementary / Secondary					
1300 Vocational Education					
1400 Other Instructional Programs - Elementary / Secondary					
1500 Nonpublic School Programs					
Total Instruction			\$280,917.44		
2000 Support Services					
2100 Support Services - Students					
2200 Support Services - Instructional Staff					
2300 Support Services - Administration					
2400 Support Services - Pupil Health					
2500 Support Services - Business					
2600 Operation and Maintenance of Plant Services		3,169,692.60	525,512.05		
2700 Student Transportation Services		1,687,950.00			
2800 Support Services - Central		274,150.63	885,438.04		
2900 Other Support Services					
Total Support Services		\$5,131,793.23	\$1,410,950.09		
3000 Operation of Non-Instructional Services					
3200 Student Activities					
3300 Community Services					
Total Operation of Non-Instructional Services					
4000 Facilities Acquisition, Construction and Improvement Services					
4400 Architecture and Engineering Services / Educational Specifications - Improvements			903,730.70		
4500 Building Acquisition and Construction Services - Original and Additional			42,956,837.10		
4600 Existing Building Improvement Services		1,728,081.52			
Total Facilities Acquisition, Construction and Improvement		\$1,728,081.52	\$43,860,567.80		
5000 Other Expenditures and Financing Uses					
5100 Debt Service / Other Expenditures and Financing Uses					
5200 Interfund Transfers - Out					
Total Other Expenditures and Financing Uses					
TOTAL ACTUAL EXPENDITURES & OTHER FINANCING USES		\$6,859,874.75	\$45,552,435.33		

LEA : 123464502 Lower Merion SD

Printed 11/22/2022 3:09:15 PM

Total

1000 Instruction	
1100 Regular Programs - Elementary / Secondary	116,411,040.55
1200 Special Programs - Elementary / Secondary	51,613,569.78
1300 Vocational Education	671,452.00
1400 Other Instructional Programs - Elementary / Secondary	1,042,992.73
1500 Nonpublic School Programs	23,254.00
Total Instruction	\$169,762,309.06
2000 Support Services	
2100 Support Services - Students	10,928,844.49
2200 Support Services - Instructional Staff	6,955,293.62
2300 Support Services - Administration	16,487,113.69
2400 Support Services - Pupil Health	4,389,262.17
2500 Support Services - Business	1,365,062.29
2600 Operation and Maintenance of Plant Services	24,652,662.29
2700 Student Transportation Services	18,001,823.60
2800 Support Services - Central	9,072,811.51
2900 Other Support Services	1,057,699.55
Total Support Services	\$92,910,573.21
3000 Operation of Non-Instructional Services	
3200 Student Activities	6,014,570.84
3300 Community Services	237,525.31
Total Operation of Non-Instructional Services	\$6,252,096.15
4000 Facilities Acquisition, Construction and Improvement Services	
4400 Architecture and Engineering Services / Educational Specifications - Improvements	903,730.70
4500 Building Acquisition and Construction Services - Original and Additional	42,956,837.10
4600 Existing Building Improvement Services	1,728,081.52
Total Facilities Acquisition, Construction and Improvement	\$45,588,649.32
5000 Other Expenditures and Financing Uses	
5100 Debt Service / Other Expenditures and Financing Uses	44,825,321.23
5200 Interfund Transfers - Out	6,889,178.80
Total Other Expenditures and Financing Uses	\$51,714,500.03
TOTAL ACTUAL EXPENDITURES & OTHER FINANCING USES	\$366,228,127.77

LEA : 123464502 Lower Merion SD

Printed 11/22/2022 3:09:29 PM

PSERS Salary Data (Salary Data should relate to the General Fund only)

Amount Description	Amount
Total Salary Base for salaries subject to PSERS withholding	135,638,417.69
Total Federally Funded salaries subject to PSERS withholding	1,096,936.58
	<hr/>

Title I Expenditure Data

Amount Description	Amount
Expenditures Funded with Current Title I Funds	298,794.59
Expenditures Funded with Carry over Title I Funds	
Total Title I Expenditure Data	<hr/> \$298,794.59 <hr/>

Title IV Revenue Data

Amount Description	Amount
Revenue from Title IV-A-1: Student Support and Academic Enrichment Grants	21,175.17
Revenue from Title IV-B: 21st Century Community Learning Centers	
	<hr/>

Title V Revenue Data

Amount Description	Amount
Revenue from Title V-B-2: Rural and Low-Income School Programs	
Revenue from Title V-B-1: Small Rural School Achievement (Directly from the Federal Govt)	
	<hr/>

1. <u>Current Special Education Expenditures within Function 1000.\r\nSee list of exclusions in the note below.</u>	65,700,638.59
2. <u>Current Special Education Expenditures within Function 2000.\r\nSee list of exclusions in the note below.</u>	19,086,550.73
3. <u>Current Special Education Expenditures within Sub-Function 2100.\r\nThis data should also be included in line 2 above.\r\nSee list of exclusions in the note below.</u>	3,092,375.60
4. <u>Current Special Education Expenditures within Sub-Function 2200.\r\nThis data should also be included in line 2 above.\r\nSee list of exclusions in the note below.</u>	1,592,439.78
5. <u>Current Special Education Expenditures within Sub-Function 2700.\r\nThis data should also be included in line 2 above.\r\nSee list of exclusions in the note below.</u>	4,894,162.08
6. <u>Current Special Education Expenditures within Sub-Function 3100.\r\nSee list of exclusions in the note below.</u>	
7. <u>Current Special Education Expenditures within Sub-Function 3200.\r\nSee list of exclusions in the note below.</u>	1,099,589.46

Note: The Current Special Education Expenditure amounts for each line should be calculated as follows:

- * Include the total expenditures for special education costs from all funds for the function/sub-function requested
- * Exclude data from sub-functions: 1243,1450,1500,1600,1807,2280,2450,2750,2990
- * Exclude data from objects: 322,511,512,516,561,562,564,566,592,593,594,595,596,597,700,830,899

Benefits for Staff Relative to Collective Bargaining Agreements

	OBJECT	COVERED	NOT COVERED	TOTAL
10 General Fund				
	211 Medical Insurance			
	212 Dental Insurance			
	215 Eye Care Insurance			
	216 Prescription Insurance			
	271 Self-Insurance Medical Benefits	20,153,143.06	1,029,357.69	21,182,500.75
	272 Self-Insurance Dental Benefits	1,083,917.02	55,362.99	1,139,280.01
	275 Self-Insurance Eye Care Benefits	122,030.32	6,232.92	128,263.24
	276 Self-Insurance Prescription Benefits	6,003,618.68	306,645.52	6,310,264.20
	FUND TOTAL	\$27,362,709.08	\$1,397,599.12	\$28,760,308.20
50 Enterprise Fund				
	211 Medical Insurance			
	212 Dental Insurance			
	215 Eye Care Insurance			
	216 Prescription Insurance			
	271 Self-Insurance Medical Benefits	196,873.14	12,701.49	209,574.63
	272 Self-Insurance Dental Benefits	17,983.38	1,160.22	19,143.60
	275 Self-Insurance Eye Care Benefits	1,699.20	226.56	1,925.76
	276 Self-Insurance Prescription Benefits	64,656.98	4,171.42	68,828.40
	FUND TOTAL	\$281,212.70	\$18,259.69	\$299,472.39
60 Internal Service Fund	No Self Insurance data to report			
	211 Medical Insurance			
	212 Dental Insurance			
	215 Eye Care Insurance			
	216 Prescription Insurance			
	271 Self-Insurance Medical Benefits			
	272 Self-Insurance Dental Benefits			
	275 Self-Insurance Eye Care Benefits			
	276 Self-Insurance Prescription Benefits			
	FUND TOTAL			
Total of All Funds		\$27,643,921.78	\$1,415,858.81	\$29,059,780.59

LEA : 123464502 Lower Merion SD

Printed 11/22/2022 3:09:38 PM

Function	Special Education (Prior Year)	Nonspecial Education (Prior Year)	Total (Prior Year)	Special Education (Current Year)	Nonspecial Education (Current Year)	Total (Current Year)
2120 Guidance Services	891,443.02	4,518,349.78	5,409,792.80	993,374.37	4,440,217.68	5,433,592.05
2140 Psychological Services	1,536,576.12	1,024,384.08	2,560,960.20	1,573,934.27	1,049,289.52	2,623,223.79
2150 Speech Pathology and Audiology Services						
2160 Social Work Services						
2260 Instruction and Curriculum Development Services	896,964.25	2,570,236.20	3,467,200.45	925,687.66	2,347,224.82	3,272,912.48
2350 Legal and Accounting Services	432,559.56	1,342,165.15	1,774,724.71	447,805.04	1,306,178.73	1,753,983.77
2420 Medical Services		36,049.92	36,049.92		35,699.92	35,699.92
2440 Nursing Services	501,710.35	2,542,958.78	3,044,669.13	621,491.97	2,777,965.37	3,399,457.34
2700 Student Transportation Services	4,220,706.41	9,848,314.97	14,069,021.38	4,894,162.08	11,419,711.52	16,313,873.60
Total	\$8,479,959.71	\$21,882,458.88	\$30,362,418.59	\$9,456,455.39	\$23,376,287.56	\$32,832,742.95

LEA : 123464502 Lower Merion SD

Printed 11/22/2022 3:09:42 PM

(PRINCIPAL AMOUNTS ONLY)

GOVERNMENTAL FUNDS/ ACTIVITIES

	Short-Term Borrowing	General Obligation Bonds/Notes	Authority Building Obligations	OLTD, Ext Term Fin, Leases	Other Post-Employment Benefits (OPEB)	Compensated Absences	Net Pension Liability	Total
1. Debt at Beginning of Fiscal Year		241,160,000.00			31,424,700.00	609,912.00	445,573,138.00	718,767,750.00
2. Additional Debt Incurred During Year				438,265.00	2,088,657.00	246,955.00		2,773,877.00
3. Retirements and Repayments		20,455,000.00		130,514.98			65,744,472.00	86,329,986.98
4. Debt at End of Fiscal Year		220,705,000.00		307,750.02	33,513,357.00	856,867.00	379,828,666.00	635,211,640.02
5. Accreted Interest at End Of Fiscal Year								
6. Total Debt and Accreted Interest		220,705,000.00		307,750.02	33,513,357.00	856,867.00	379,828,666.00	635,211,640.02
7. Current Portion P&I - Due within 1 year		30,795,735.00		132,928.20				30,928,663.20
8. Interest Paid during current fiscal year		9,233,956.00		2,413.22				9,236,369.22

(PRINCIPAL AMOUNTS ONLY)

PROPRIETARY FUNDS

	Short-Term Borrowing	General Obligation Bonds/Notes	Authority Building Obligations	OLTD, Ext Term Fin, Leases	Other Post-Employment Benefits (OPEB)	Compensated Absences	Net Pension Liability	Total
1. Debt at Beginning of Fiscal Year							3,634,862.00	3,634,862.00
2. Additional Debt Incurred During Year					181,404.00			181,404.00
3. Retirements and Repayments							486,351.00	486,351.00
4. Debt at End of Fiscal Year					181,404.00		3,148,511.00	3,329,915.00
5. Accreted Interest at End Of Fiscal Year								
6. Total Debt and Accreted Interest					181,404.00		3,148,511.00	3,329,915.00
7. Current Portion P&I - Due within 1 year								
8. Interest Paid during current fiscal year								

Total Principal and Interest Payments Made by Your School - All Funds

Function	Fund		Principal (910)	Principal (920)	Interest (830)	Total (Principal +Interest)	Misc Other Uses (990)
5110	10	General Fund	20,455,000.00		9,237,393.03	29,692,393.03	
5110	20	Special Revenue Funds					
5110	30	Capital Projects Funds					
5110	40	Debt Service Fund					
5110	90	Permanent Fund					
5120	10	General Fund					
5120	20	Special Revenue Funds					
5120	30	Capital Projects Funds					
5120	40	Debt Service Fund					
5140	10	General Fund	130,514.98		2,413.22	132,928.20	
5140	20	Special Revenue Funds					
5140	30	Capital Projects Funds					
5140	40	Debt Service Fund					
5140	90	Permanent Fund					
Total Debt Payments - Governmental Funds			\$20,585,514.98		\$9,239,806.25	\$29,825,321.23	

Function	Fund		Principal (910)	Principal (920)	Interest (830)	Total (Principal +Interest)
5110	50	Enterprise Fund				
5110	60	Internal Service Fund				
5120	50	Enterprise Fund				
5120	60	Internal Service Fund				
5140	50	Enterprise Fund				
5140	60	Internal Service Fund				
Total Debt Payments - Proprietary Funds						

LEA : 123464502 Lower Merion SD

Printed 11/22/2022 3:09:42 PM

Debt Details
Governmental Funds/ Activities

Debt Category	Debt Issue Date (MM/YYYY)	Principal Amounts Only			Debt at End of Fiscal Year	Current Portion Due Within One Year (Principal and Interest)	Interest Paid During Fiscal Year
		Debt at Beginning of Fiscal Year	Additions	Reductions / Repayments			
General Obligation Bonds/Notes – CIB	03/2021	24,785,000.00		1,060,000.00	23,725,000.00	3,194,750.00	1,212,750.00
General Obligation Bonds/Notes – CIB	12/2020	50,625,000.00		5,000.00	50,620,000.00	2,170,425.00	2,165,675.00
General Obligation Bonds/Notes – CIB	09/2019	24,465,000.00		5,000.00	24,460,000.00	1,071,125.00	1,066,375.00
General Obligation Bonds/Notes – CIB	09/2019	18,945,000.00		5,000.00	18,940,000.00	402,350.00	397,500.00
General Obligation Bonds/Notes – CIB	03/2016	40,780,000.00		7,050,000.00	33,730,000.00	8,432,775.00	1,384,275.00
General Obligation Bonds/Notes – CIB	04/2015	7,655,000.00		445,000.00	7,210,000.00	671,335.00	224,910.00
General Obligation Bonds/Notes – CIB	05/2015	23,240,000.00		3,090,000.00	20,150,000.00	3,855,325.00	751,600.00
General Obligation Bonds/Notes – CIB	02/2009	43,365,000.00		6,395,000.00	36,970,000.00	8,467,150.00	2,022,950.00
General Obligation Bonds/Notes – CIB	07/2006	7,300,000.00		2,400,000.00	4,900,000.00	2,530,500.00	7,921.00
Compensated Absences		609,912.00	246,955.00		856,867.00		
Other Post-Employment Benefits (OPEB)		31,424,700.00	2,088,657.00		33,513,357.00		
Net Pension Liability		445,573,138.00		65,744,472.00	379,828,666.00		
Leases			438,265.00	130,514.98	307,750.02	132,928.20	2,413.22
Totals for Debt Entered:		\$718,767,750.00	\$2,773,877.00	\$86,329,986.98	\$635,211,640.02	\$30,928,663.20	\$9,236,369.22

Bond Details
Proprietary Funds

Debt Category	Debt Issue Date (MM/YYYY)	Principal Amounts Only			Debt at End of Fiscal Year	Current Portion Due Within One Year (Principal and Interest)	Interest Paid During Fiscal Year
		Debt at Beginning of Fiscal Year	Additions	Reductions / Repayments			
Other Post-Employment Benefits (OPEB)			181,404.00		181,404.00		
Net Pension Liability		3,634,862.00		486,351.00	3,148,511.00		
Totals for Debt Entered:		\$3,634,862.00	\$181,404.00	\$486,351.00	\$3,329,915.00		

LEA : 123464502 Lower Merion SD

Printed 11/22/2022 3:09:48 PM

General Fund (10)

Section 1: Tuition/Purchased Services as Reported within Expenditure Detail

	Amount
Tuition Reported in General Fund Expenditures 1000-560	7,254,996.48
Purchased Services in General Fund Expenditures 1000-594 and 1000-597	1,672.49
Section 1 Total	\$7,256,668.97

Section 2: Tuition Paid to Institution Types During Fiscal Year

	Tuition Paid For Nonspecial Education	Tuition Paid For Special Education	Total
1 1306 Institutions			
2 Institutionalized Children's Programs		1,672.49	1,672.49
3 Juveniles Incarcerated in Adult Facilities	624.18		624.18
4 Residential Treatment Facilities		26,640.34	26,640.34
5 Other Local Education Agencies			
6 Brick and Mortar Charter Schools	22,279.56	57,371.05	79,650.61
7 Cyber Charter Schools	960,056.07	1,214,223.74	2,174,279.81
8 Career and Technology Centers	671,452.00		671,452.00
9 Approved Private Schools		2,004,698.11	2,004,698.11
10 PA Chartered Schools for the Deaf and Blind			
11 Private Residential Rehabilitative Institutions			
12 Juvenile Detention Centers			
13 Special Program Jointures			
14 Other Tuition Not Included Elsewhere In This Section	43,075.00	2,254,576.43	2,297,651.43
Section 2 Total	\$1,697,486.81	\$5,559,182.16	\$7,256,668.97

LEA : 123464502 Lower Merion SD

Printed 11/22/2022 3:09:53 PM

Food Service / Cafeteria Operations Fund (51)

2000 Support Services

Total

300 Purchased Professional and Technical Services

360 Employee Training and Development Services

3,773.25

Total Purchased Professional and Technical Services

\$3,773.25

500 Other Purchased Services

580 Travel

1,213.51

Total Other Purchased Services

\$1,213.51

800 Other Objects

810 Dues and Fees

1,393.00

Total Other Objects

\$1,393.00

Total 2000 Support Services

\$6,379.76

LEA : 123464502 Lower Merion SD

Printed 11/22/2022 3:09:53 PM

Food Service / Cafeteria Operations Fund (51)

	<u>Elementary</u>	<u>Secondary</u>	<u>Federal</u>	<u>Total</u>
2800 Support Services – Central				
300 <u>Purchased Professional and Technical Services</u>				
360 Employee Training and Development Services				3,773.25
Total Purchased Professional and Technical Services				\$3,773.25
500 <u>Other Purchased Services</u>				
580 Travel				1,213.51
Total Other Purchased Services				\$1,213.51
800 <u>Other Objects</u>				
810 Dues and Fees				1,393.00
Total Other Objects				\$1,393.00
Total 2800 Support Services – Central				\$6,379.76

LEA : 123464502 Lower Merion SD

Printed 11/22/2022 3:09:53 PM

Food Service / Cafeteria Operations Fund (51)

	<u>Elementary</u>	<u>Secondary</u>	<u>Federal</u>	<u>Total</u>
2830 Staff Services				
300 <u>Purchased Professional and Technical Services</u>				
360 Employee Training and Development Services				3,773.25
Total Purchased Professional and Technical Services				\$3,773.25
500 <u>Other Purchased Services</u>				
580 Travel				1,213.51
Total Other Purchased Services				\$1,213.51
800 <u>Other Objects</u>				
810 Dues and Fees				1,393.00
Total Other Objects				\$1,393.00
Total 2830 Staff Services				\$6,379.76

LEA : 123464502 Lower Merion SD

Printed 11/22/2022 3:09:53 PM

Food Service / Cafeteria Operations Fund (51)

2836 Staff Development Services – Non-Instructional, Non-Certified Staff Only

Elementary

Secondary

Federal

Total

300 Purchased Professional and Technical Services

360 Employee Training and Development Services

3,773.25

Total Purchased Professional and Technical Services

\$3,773.25

500 Other Purchased Services

580 Travel

1,213.51

Total Other Purchased Services

\$1,213.51

800 Other Objects

810 Dues and Fees

1,393.00

Total Other Objects

\$1,393.00

Total 2836 Staff Development Services – Non-Instructional, Non-Certified Staff Only

\$6,379.76

LEA : 123464502 Lower Merion SD

Printed 11/22/2022 3:09:56 PM

Food Service / Cafeteria Operations Fund (51)

3000 Operation of Non-Instructional Services

Total

100 Personnel Services – Salaries

100 Personnel Services – Salaries 1,125,148.57

Total Personnel Services – Salaries \$1,125,148.57

200 Personnel Services – Employee Benefits

210 Group Insurance – Contracted Provider 2,304.87

220 Social Security Contributions 85,057.46

230 PSERS Retirement Contributions 254,864.27

260 Workers’ Compensation 9,434.97

270 Group Insurance – Self-Insurance 299,472.39

Total Personnel Services – Employee Benefits \$651,133.96

400 Purchased Property Services

430 Repairs and Maintenance Services 28,556.95

440 Rentals 305.93

Total Purchased Property Services \$28,862.88

500 Other Purchased Services

580 Travel 1,293.94

Total Other Purchased Services \$1,293.94

600 Supplies

610 General Supplies 181,823.55

630 Food 1,376,277.35

650 Supplies & Fees – Technology Related 3,614.99

Total Supplies \$1,561,715.89

700 Property

740 Depreciation 16,249.95

Total Property \$16,249.95

800 Other Objects

810 Dues and Fees 900.00

Total Other Objects \$900.00

Total 3000 Operation of Non-Instructional Services \$3,385,305.19

LEA : 123464502 Lower Merion SD

Printed 11/22/2022 3:09:56 PM

Food Service / Cafeteria Operations Fund (51)

	<u>Elementary</u>	<u>Secondary</u>	<u>Federal</u>	<u>Total</u>
3100 Food Services				
100 Personnel Services – Salaries				
100 Personnel Services – Salaries				1,125,148.57
Total Personnel Services – Salaries				\$1,125,148.57
200 Personnel Services – Employee Benefits				
210 Group Insurance – Contracted Provider				2,304.87
220 Social Security Contributions				85,057.46
230 PSERS Retirement Contributions				254,864.27
260 Workers' Compensation				9,434.97
270 Group Insurance – Self-Insurance				299,472.39
Total Personnel Services – Employee Benefits				\$651,133.96
400 Purchased Property Services				
430 Repairs and Maintenance Services				28,556.95
440 Rentals				305.93
Total Purchased Property Services				\$28,862.88
500 Other Purchased Services				
580 Travel				1,293.94
Total Other Purchased Services				\$1,293.94
600 Supplies				
610 General Supplies				181,823.55
630 Food				1,376,277.35
650 Supplies & Fees – Technology Related				3,614.99
Total Supplies				\$1,561,715.89
700 Property				
740 Depreciation				16,249.95
Total Property				\$16,249.95
800 Other Objects				
810 Dues and Fees				900.00
Total Other Objects				\$900.00
Total 3100 Food Services				\$3,385,305.19

	<u>Food Service(51)</u>	<u>Child Care Operations(52)</u>	<u>Other Enterprise(58)</u>	<u>Internal Service(60)</u>	<u>Total</u>
2000 Support Services					
2800 Support Services - Central		6,379.76			6,379.76
Total Support Services		\$6,379.76			\$6,379.76
3000 Operation of Non-Instructional Services					
3100 Food Services		3,385,305.19			3,385,305.19
Total Operation of Non-Instructional Services		\$3,385,305.19			\$3,385,305.19
TOTAL ACTUAL EXPENDITURES & OTHER FINANCING USES		\$3,391,684.95			\$3,391,684.95

LEA : 123464502 Lower Merion SD

Printed 11/22/2022 3:10:11 PM

Fund	School	School Number	Local Personnel	Local Nonpersonnel	State Personnel	State Nonpersonnel	Federal Personnel	Federal Nonpersonnel	Total	Explanation
10	Bala-Cynwyd MS	3293	23,645,780.93	2,847,839.86	3,952,821.03	476,068.07	267,628.62	32,232.53	31,222,371.04	
	Belmont Hills El Sch	7597	11,208,402.40	1,126,601.15	1,873,687.70	188,331.81	126,859.39	12,751.14	14,536,633.59	
	Cynwyd Sch	3286	10,984,523.86	1,256,498.46	1,836,262.34	210,046.50	124,325.48	14,221.35	14,425,877.99	
	Gladwyne Sch	3291	13,760,904.35	1,580,840.26	2,300,384.68	264,266.11	155,749.22	17,892.33	18,080,036.95	
	Harriton SHS	3296	30,480,431.80	4,049,474.44	5,095,356.86	676,943.08	344,984.84	45,832.92	40,693,023.94	
	Lower Merion HS	3295	35,462,578.94	5,089,903.30	5,928,213.10	850,869.63	401,373.97	57,608.75	47,790,547.69	
	Merion El Sch	3287	11,265,814.24	1,426,291.01	1,883,285.13	238,430.40	127,509.19	16,143.10	14,957,473.07	
	Penn Valley Sch	3288	13,188,520.51	1,373,692.59	2,204,700.34	229,637.63	149,270.84	15,547.78	17,161,369.69	
	Penn Wynne Sch	3289	14,740,818.61	1,855,410.35	2,464,195.12	310,165.48	166,840.12	20,999.98	19,558,429.66	
	Welsh Valley MS	3294	24,215,382.96	2,788,146.58	4,048,040.34	466,089.26	274,075.51	31,556.91	31,823,291.56	
Total			188,953,158.60	23,394,698.00	31,586,946.64	3,910,847.97	2,138,617.18	264,786.79	250,249,055.18	