

Bond Planning Committee

Meeting #6

November 17, 2022

#cfbproud

2022-2023

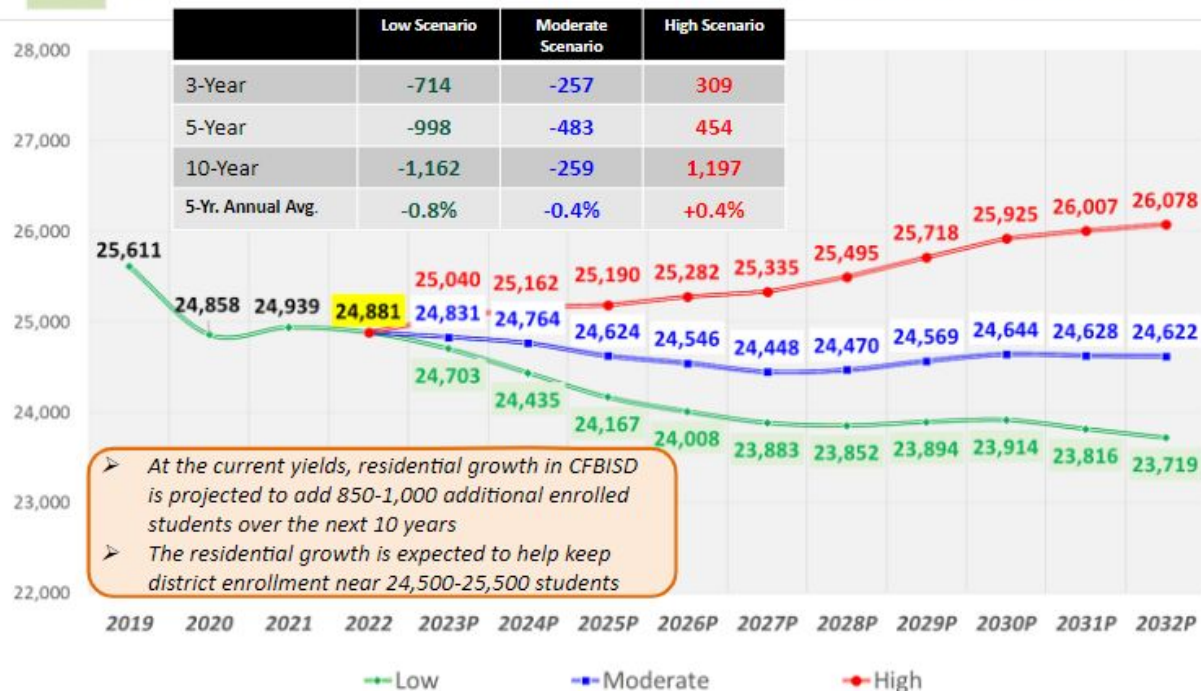
AGENDA

1. Meeting 5 Recap + Responses from Google Form
2. Bonding Capacity & Tax Impact Scenarios
3. Design Process Overview
4. Construction Panel Discussion
5. Review All Potential Projects Presented + Options
6. Project Budgets
7. Prioritization Activity

MEETING #5 RECAP



10-YEAR DISTRICT ENROLLMENT PROJECTIONS



MEETING #5 RECAP

TECHNOLOGY PROJECT CONSIDERATIONS

Communications

- Internal Dialing
- Inbound/Outbound Local & Long Distance
- 911 Emergency Responder

Security

- Video Surveillance Cameras
- Access Control
- Sensors
- Emergency Notifications

MEETING #5 RECAP

TECHNOLOGY PROJECT CONSIDERATIONS

Data Network

- Internet
- Computer Authentication
- Email
- Cloud-based Systems
 - Student Information System
 - ERP (Business)
 - Canvas Learning Management System
 - Google Apps

Fiber Optic Cable Resilient Network

- Replace existing Fiber as needed
- Add new Fiber links

MEETING #5 RECAP

EARLY CHILDHOOD PROJECT CONSIDERATIONS

Specialized Learning Spaces

Provide all Early Childhood classrooms with adequate space for play-based, experiential learning, including tiled areas for art and sensory activities.

Specialized Furniture

Provide Early Childhood-appropriate furniture that is appropriate in size and function, and can be used in multiple ways when creating authentic learning experiences.

Outdoor Learning

Provide quick access to outdoor learning and discovery, including covered, inclusive playgrounds that allow for gross motor development.

Bathrooms

Ensure that bathrooms are located in all Early Childhood classrooms and that Early Childhood Special Education classrooms contain changing stations.

Safety & Security

Provide quick and safe access to outdoor areas for arrival/dismissal to ensure that Early Childhood students are safe at all times.

MEETING #5 RECAP






EARLY CHILDHOOD FEEDBACK FORMS

Projects for Consideration	Agree ✓
1. Specialized Learning Spaces - Provide all Early Childhood classrooms with adequate space for play-based, experiential learning, including tiled areas for art and sensory activities.	34
2. Specialized Furniture - Provide Early Childhood-appropriate furniture that is appropriate in size and function, and can be used in multiple ways when creating authentic learning experiences.	35
3. Outdoor Learning - Provide quick access to outdoor learning and discovery, including covered, inclusive playgrounds that allow for gross motor development.	32
4. Bathrooms - Ensure that bathrooms are located in all Early Childhood classrooms and that Early Childhood Special Education classrooms contain changing stations.	33
5. Safety & Security - Provide quick and safe access to outdoor areas for arrival/dismissal to ensure that Early Childhood students are safe at all times.	34

Number represents agreement out of 36 from Meeting #5

MEETING #5 RECAP

TOUR FEEDBACK FROM CARROLLTON ELEMENTARY SCHOOL

Strategic Priorities	Elementary School	- Architectural Elements - What did you see?
Optimize Engaging & Diverse Learning	<ul style="list-style-type: none">Evidence of multi-mode learning approachVariety of scale in spaces for learnersEngaging learning spacesCollaborative spacesConsideration for ELL learnersConsideration for learners with disabilities	1.20 
Optimize Facility, Safety & Security, and Infrastructure to Be Adaptable to Student Needs	<ul style="list-style-type: none">Wayfinding for studentsOutdoor learning opportunitiesSafe environment	1.30 
Optimize Community Engagement	<ul style="list-style-type: none">Scaled to Elementary StudentsFront entry obviousWayfinding for parentsWelcoming for parentsOpportunities for community engagement	1.30 
Optimize Social and Emotional Health of All Students	<ul style="list-style-type: none">Warm, caring physical environmentWelcoming environment for studentsSupports socialization for students	1.40 
Optimize All Available Resources	<ul style="list-style-type: none">Professional workspaces for teachersTechnology for teachers/learnersEfficiency of the environment	1.40 

Finance 101 Recap

Larry Guerra
Chief Financial Officer

Common Question: Property Value Growth

If my property appraisal increased by 15%, how much more money does CFBISD receive in the General Fund?





\$0

The State Actually Pays CFBISD Less When Property Taxes Increase

Each year, a school district adopts two tax rates
which determine the total tax rate:



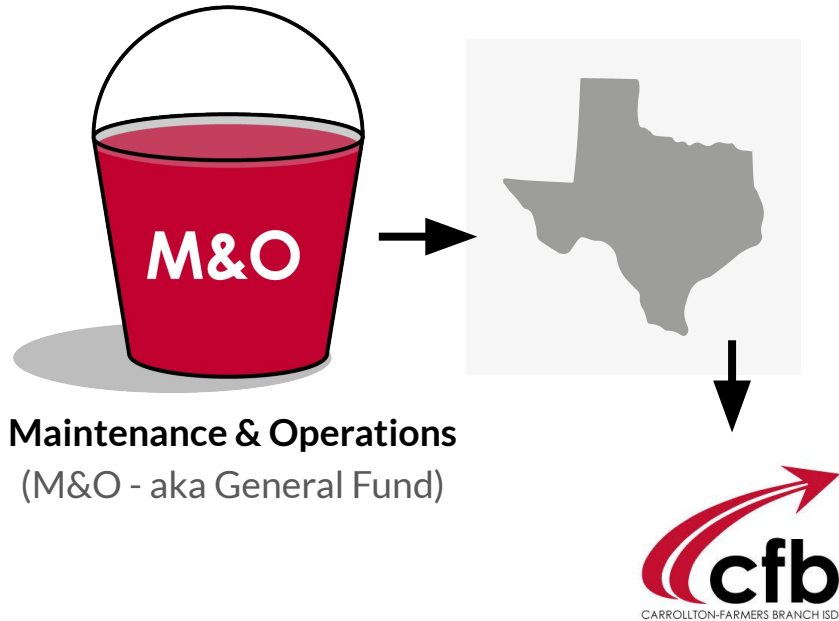
Maintenance & Operations
(M&O - aka General Fund)



Interest & Sinking
(I&S - aka Debt Service)

**82% of CFBISD's M&O Budget
is for salaries.**

Funds from the two tax rates are dispersed differently:



Bonding Capacity & Tax Impact Scenarios

Laura Alexander, Robert Spears
Hilltop Securities

CFBISD celebrates the LOWEST I&S tax rate among nearby districts!

	District	M&O	I&S	Total Tax Rate
1	Prosper ISD	\$ 0.9603	\$ 0.5000	\$ 1.4603
2	Denton ISD	\$ 0.8820	\$ 0.4800	\$ 1.3620
3	Mesquite ISD	\$ 0.8720	\$ 0.4400	\$ 1.3120
4	Lancaster ISD	\$ 1.0329	\$ 0.4375	\$ 1.4704
5	Desoto ISD	\$ 0.9603	\$ 0.4283	\$ 1.3886
6	Northwest ISD	\$ 0.8720	\$ 0.4200	\$ 1.2920
7	Grand Prairie ISD	\$ 0.9603	\$ 0.4160	\$ 1.3763
8	Lewisville ISD	\$ 0.9278	\$ 0.3809	\$ 1.3087
9	McKinney ISD	\$ 1.0067	\$ 0.3700	\$ 1.3767
10	Richardson ISD	\$ 1.0409	\$ 0.3500	\$ 1.3909
11	Duncanville ISD	\$ 0.9759	\$ 0.3400	\$ 1.3159
12	Cedar Hill ISD	\$ 0.9024	\$ 0.3360	\$ 1.2384
13	Grapevine-Colleyville ISD	\$ 0.9534	\$ 0.3217	\$ 1.2751
14	Garland ISD	\$ 0.9384	\$ 0.3179	\$ 1.2563
15	Frisco ISD	\$ 0.9972	\$ 0.2700	\$ 1.2672
16	Plano ISD	\$ 1.0517	\$ 0.2690	\$ 1.3207
17	Irving ISD	\$ 0.9390	\$ 0.2687	\$ 1.2077
18	Coppell ISD	\$ 1.0472	\$ 0.2448	\$ 1.2920
19	Dallas ISD	\$ 1.0062	\$ 0.2420	\$ 1.2482
20	Carrollton-Farmers Branch ISD	\$ 1.0012	\$ 0.2000	\$ 1.2012

BALLOT LANGUAGE REQUIREMENT

House Bill 3 Requirement

Since CFBISD's last bond election, all school bond ballots must include the language that states "This is a property tax increase." regardless of the district's ability to fund the debt at the same I&S rate. This was part of House Bill 3 that was passed in 2019.

SECTION 1.008. Section 45.003, Education Code, is amended by adding Subsections (b-1) and (d-1) and amending Subsections (d) and (f) to read as follows:

(b-1) The ballot proposition under Subsection (b) must include the following statement: "THIS IS A PROPERTY TAX INCREASE."

BALLOT LANGUAGE REQUIREMENT

Sample Ballot Language

PROPOSITION A

THE ISSUANCE OF \$XXX,XXX,XXX OF BONDS BY
THE CARROLLTON-FARMERS BRANCH
INDEPENDENT SCHOOL DISTRICT TO CONSTRUCT,
RENOVATE AND EQUIP SCHOOL FACILITIES, AND
THE IMPOSITION OF A TAX SUFFICIENT TO PAY THE
PRINCIPAL OF AND INTEREST ON THE BONDS. THIS
IS A PROPERTY TAX INCREASE.

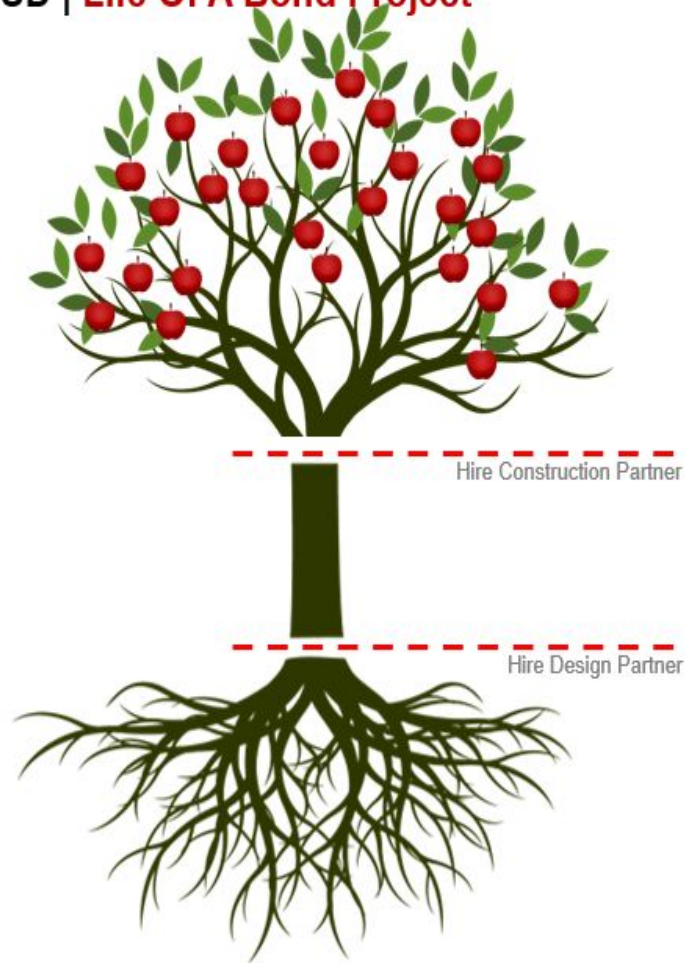
This statement is now required on all school bond ballots. Based on current assumptions and estimates, CFBISD could issue up to \$670 M and the tax rate will not increase as a result of the bond election.

Design Process Overview

Malcolm Mulroney

Lelia Goehring

CFBISD | Life Of A Bond Project



**LEAVES & FRUIT
CONSTRUCTION**
*Facility Construction

**SECONDARY BRANCHES
DOCUMENTATION (DD & CD)**
*Construction Documents
*GMP

**MAJOR BRANCHES
SCHEMATIC DESIGN**
*SD Booklet
*Project Estimate

**TRUNK
PRE-DESIGN (CONCEPT)**
*Program Documents
*Concept Diagrams
*Project Estimate

**ROOTS
CAPITAL PLANNING**
*2018 Bond
*Collaborative Vision 2030
*BAC Facility Assessments
*Security Assessment

**LEAVES & FRUIT
CONSTRUCTION**
*Architects & Design Partners
*Facility / Maintenance
*CMAR

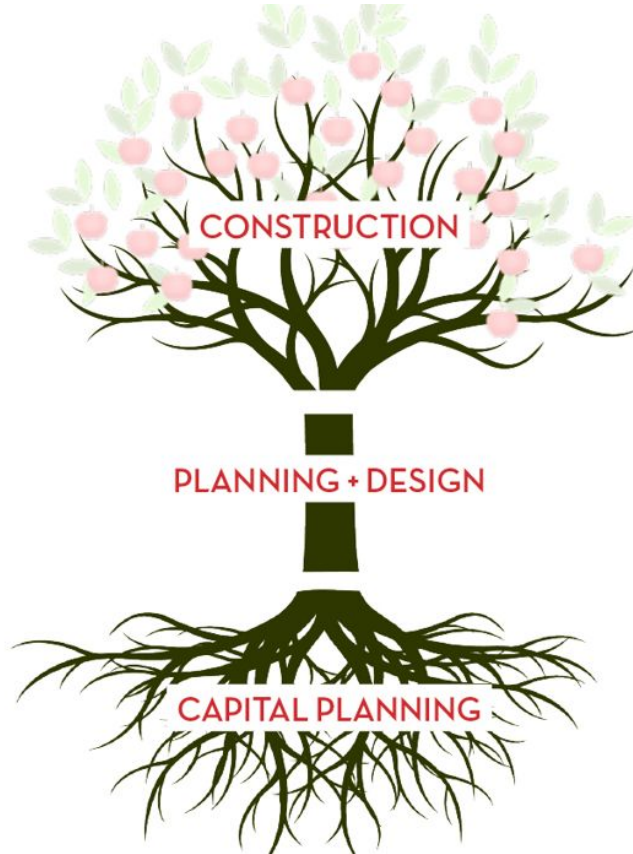
**SECONDARY BRANCHES
PARTNERS**
*Architects & Design Partners
*Campus Stakeholder Committee
*Focus Groups
*Facility / Maintenance
*CMAR

**MAJOR BRANCHES
PARTNERS**
*Architects & Design Partners
*Campus Stakeholder Committee
*Focus Groups
*Facility / Maintenance
*CMAR

**TRUNK
PARTNERS**
*Architects & Design Partners
*Campus Stakeholder Committee
*Focus Groups
*Facility / Maintenance
*CMAR

**ROOTS
PARTNERS**
*Campus Stakeholder Committee
*BAC
*Architects

Design and Construction Process



R.L. TURNER + VIVIAN FIELD

Weekly
**CONSTRUCTION
MEETINGS**

Frequent Coordination
+ Jurisdictional
MEETINGS

ONGOING
Board + BAC Updates

60+
STAKEHOLDERS

40+
MEETINGS
Tours + Site Visits

6 CAC
Meetings from
January to July

BAC 8
Members meeting monthly



CONSTRUCTION

Starting Construction Phase March 2021

10+

DOCUMENTATION (DD & CD) MEETINGS

August 202 – March 2021

2 Design Development Meetings (08/26, 09/10/2020)

6 Focus Group Meetings

- Library, Principal, AV, Auditorium and (3) CTE

9

SCHEMATIC DESIGN WORKSHOPS

June - August 2020

4 Schematic Design Meetings (06/15, 07/06, 07/13, 07/27/2020)

4 Focus Group Meetings

- Library, CTE, Auditorium and Culinary
Structural Review (08/24/2020)

7+

PRE-DESIGN DISCUSSIONS

Kick-Off Meeting (02/27/2020)

2 Programming and Pre-Design Meetings (04/21, 05/12/2020)

1:1 Visioning Meetings (04/30, 05/11, 05/13, 05/19/2020)

- Principle, CTE, Fine Arts, Theater

Scholar and Educator Surveys

Site Walks

14

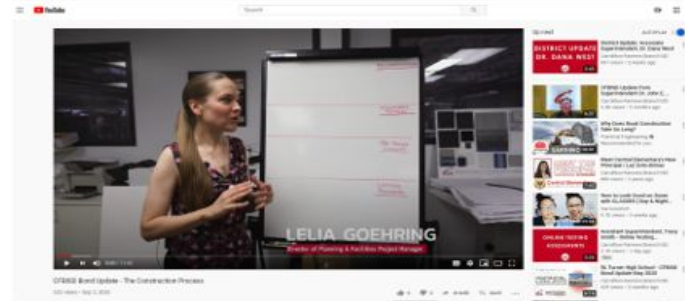
BAC & CAC PRESENTATIONS

January – July 2019 6 CAC Meetings & 8 Board Meetings

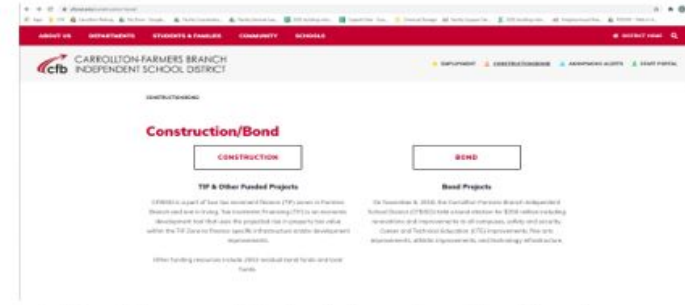
June Board / BAC Workshop

Design and Construction Process

CFBISD | **Bond Website**



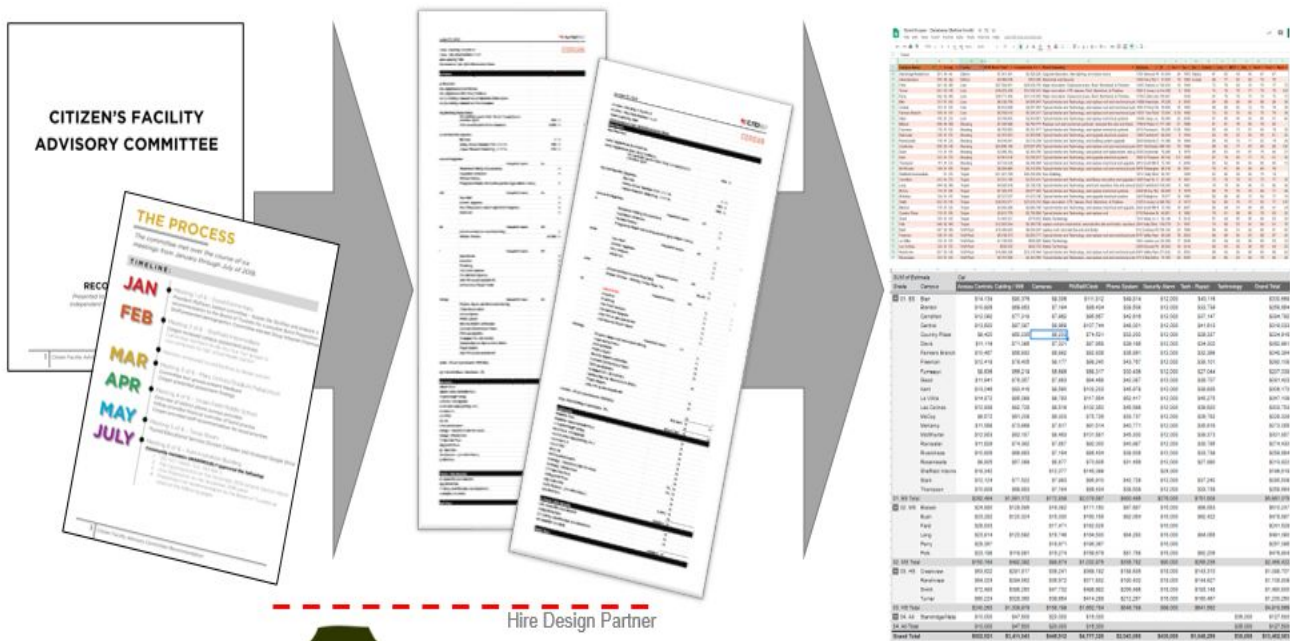
<https://www.youtube.com/watch?v=MW-kzFBJKXY>



<https://www.cfbisd.edu/const>

CFBISD CITIZEN'S
**BOND PLANNING
COMMITTEE**

Design and Construction Process



ROOTS
CAPITAL PLANNING

*2018 Bond

*Collaborative Vision 2030

*BAC Facility Assessments

*Security Assessment

ROOTS
PARTNERS

*Campus Stakeholder Committee

*BAC

*Architects

CFBISD CITIZEN'S
**BOND PLANNING
COMMITTEE**

Panel Discussion

CORE Construction

Joeris General Contractors

Northstar Builders Group



JOERIS



CFBISD CITIZEN'S
BOND PLANNING
COMMITTEE



**LET'S TAKE
A BREAK!**

Project Considerations + Options

Malcolm Mulroney

Lelia Goehring

VISION FOR INNOVATION & INSTRUCTION

CFBISD BELIEVES IN...

- Excellence in ALL learning opportunities
- Respecting differences by embracing diversity
- A growth mindset for students, faculty, and staff
- Ongoing partnerships with the community
- Support & love of the whole student



CARROLLTON-FARMERS BRANCH ISD

Tier 1 Instruction

Culture

Data

Observation &
Feedback

MTSS: Multi-Tiered
System of Support

Restorative
Practices

Professional Learning Communities

CFB Interdepartmental Support

VISION FOR INNOVATION & INSTRUCTION



← 90s

2020



2022 →



VISION FOR INNOVATION & INSTRUCTION



← 90s

2020



2022 →



VISION FOR INNOVATION & INSTRUCTION



← 90s

2020



2022 →



VISION FOR INNOVATION & INSTRUCTION



← 90s

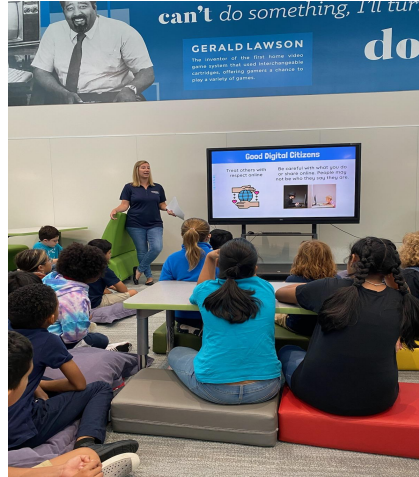
2020



2022 →

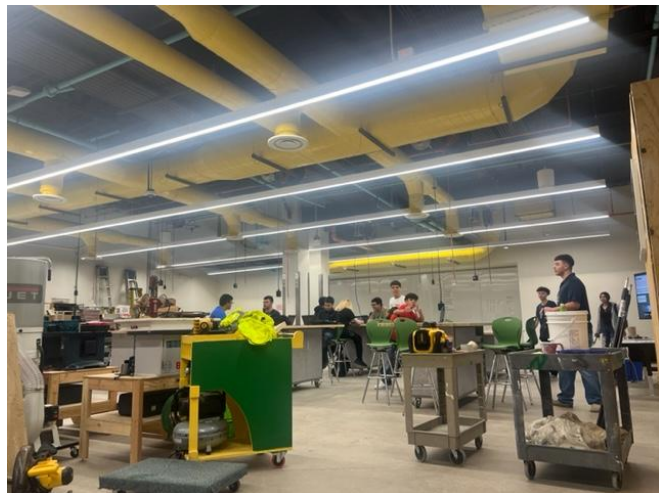


VISION FOR INNOVATION & INSTRUCTION



Are these students receiving the same type of learning experience?

VISION FOR INNOVATION & INSTRUCTION



Secondary Classroom Experience

Instructional space that offers real-life experiences.

Construction, Cosmetology, Automotive Tech, Vet-Med, Welding



VISION FOR INNOVATION & INSTRUCTION



COMPUTER LAB

What type of learning experience can you expect from the lab on the left vs. the lab on the right?

Where do you want your child to be sitting?



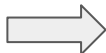
Flexible Outdoor Learning Space



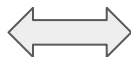
Flexible Indoor Learning Spaces



This or that?



It's the same space!



Professional Learning Community Space



PLC -4 Qs

- 1) What do we want students to know and be able to do?
- 2) How do we know if students have learned?
- 3) How do we respond when students don't learn?
- 4) How do we respond when students have learned?

This is where student achievement begins!



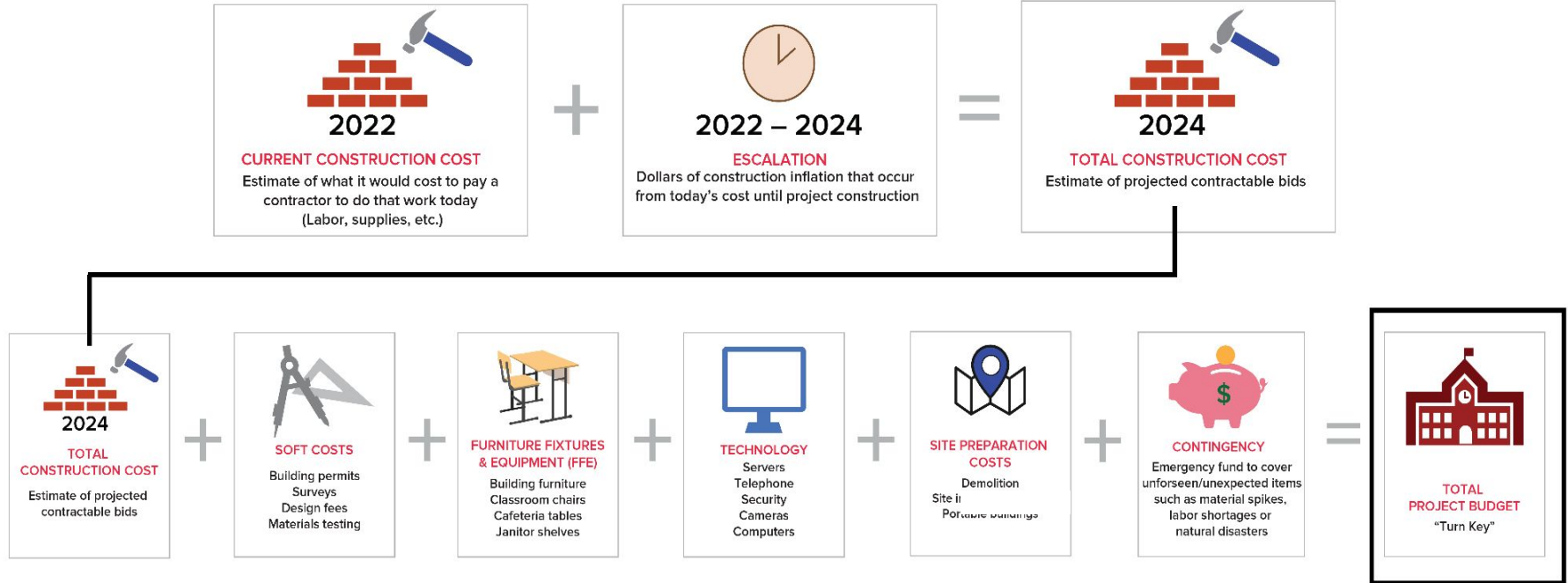
Equitable Experiences for ALL

CFBISD BELIEVES IN...

- Excellence in ALL learning opportunities
- Respecting differences by embracing diversity
- A growth mindset for students, faculty, and staff
- Ongoing partnerships with the community
- Support & love of the whole student

Prioritization Activity

WHAT'S INCLUDED IN TOTAL PROJECT BUDGET



TOTAL PROJECT BUDGET

All the costs we'll show are our
Opinion of Probable Costs for what
the Total Project Budget could be
when the project is ready for bid.



TOTAL
PROJECT
BUDGET
"Turn Key"

CFBISD FACILITY OVERVIEW

4 High Schools

6 Middle Schools

24 Elementary Schools

5 Support facilities

3 Admin



 **Dave Blair Elementary**
Carrollton-Farmers Branch ISD

 **Blanton Elementary**
Carrollton-Farmers Branch ISD

 **Carrollton Elementary**
Carrollton-Farmers Branch ISD

 **Central Elementary**
Carrollton-Farmers Branch ISD

 **Country Place Elementary**
Carrollton-Farmers Branch ISD

 **Dale B. Davis Elementary**
Carrollton-Farmers Branch ISD

 **Farmers Branch Elementary**
Carrollton-Farmers Branch ISD

 **Bernice Chatman Freeman Elementary**
Carrollton-Farmers Branch ISD

 **Furneaux Elementary**
Carrollton-Farmers Branch ISD

 **R. E. Good Elementary**
Carrollton-Farmers Branch ISD

 **E. L. Kent Elementary**
Carrollton-Farmers Branch ISD

 **La Villita Elementary**
Carrollton-Farmers Branch ISD

 **Tom Landry Elementary**
Carrollton-Farmers Branch ISD

 **Las Colinas Elementary**
Carrollton-Farmers Branch ISD

 **McCoy Elementary**
Carrollton-Farmers Branch ISD

 **Charlie McKamy Elementary**
Carrollton-Farmers Branch ISD

 **McLaughlin/Strickland Elementary**
Carrollton-Farmers Branch ISD

 **Kathryn S. McWhorter Elementary**
Carrollton-Farmers Branch ISD

 **Annie Heads Rainwater Elementary**
Carrollton-Farmers Branch ISD

 **Riverchase Elementary**
Carrollton-Farmers Branch ISD

 **Rosemeade Elementary**
Carrollton-Farmers Branch ISD

 **Sheffield Elementary**
Carrollton-Farmers Branch ISD

 **Janie Stark Elementary**
Carrollton-Farmers Branch ISD

 **June R. Thompson Elementary**
Carrollton-Farmers Branch ISD

CFBISD ES CAMPUS

1. Sheffield*

2. Good*

3. Las Colinas*

4. La Villita

5. McWhorter

6. Freeman

7. Riverchase

8. Thompson*

9. Blanton*

10. Blair*

11. Stark*

12. Landry

13. McStrick

14. Country Place

15. Davis

16. Riverchase

17. McKamy

18. Kent

19. Furneaux

20. Rosemeade

21. McCoy

22. Farmers Branch

23. Central

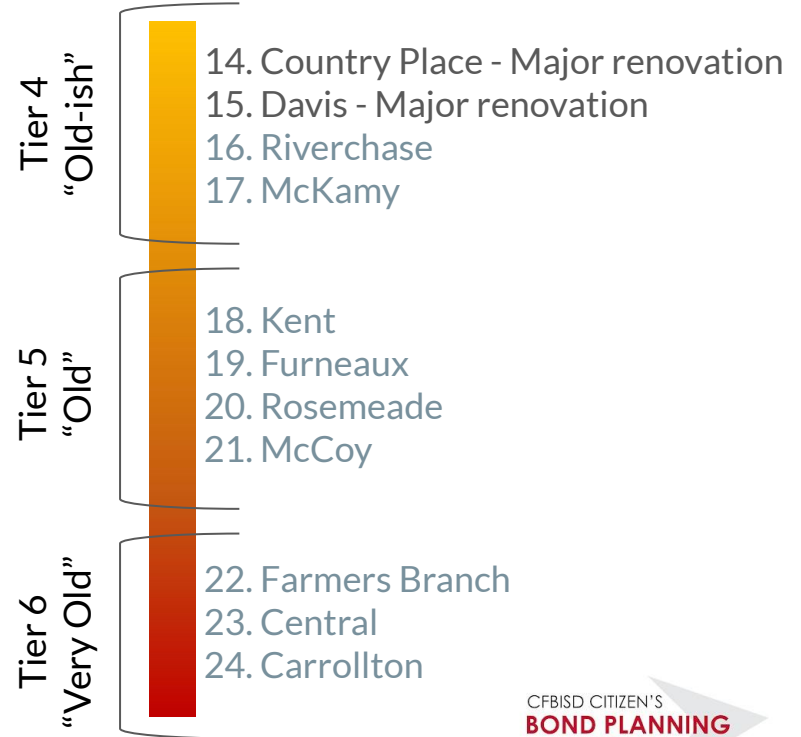
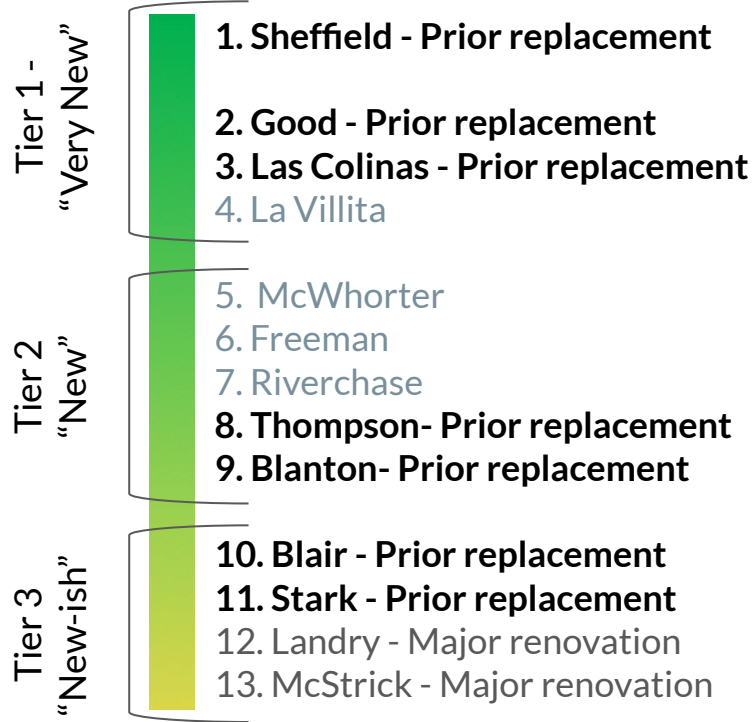
24. Carrollton

CFBISD ES CAMPUS

- 
1. Sheffield - Prior replacement
 2. Good - Prior replacement
 3. Las Colinas - Prior replacement
 4. La Villita
 5. McWhorter
 6. Freeman
 7. Riverchase
 8. Thompson- Prior replacement
 9. Blanton- Prior replacement
 10. Blair - Prior replacement
 11. Stark - Prior replacement
 12. Landry - Major renovation
 13. McStrick - Major renovation

- 
14. Country Place - Major renovation
 15. Davis - Major renovation
 16. Riverchase
 17. McKamy
 18. Kent
 19. Furneaux
 20. Rosemeade
 21. McCoy
 22. Farmers Branch
 23. Central
 24. Carrollton

CFBISD ES CAMPUS



'BASE SCOPE' ALL ES

-  **Dave Blair Elementary**
Carrollton-Farmers Branch ISD
-  **Blanton Elementary**
Carrollton-Farmers Branch ISD
-  **Carrollton Elementary**
Carrollton-Farmers Branch ISD
-  **Central Elementary**
Carrollton-Farmers Branch ISD
-  **Country Place Elementary**
Carrollton-Farmers Branch ISD
-  **Dale B. Davis Elementary**
Carrollton-Farmers Branch ISD
-  **Tom Landry Elementary**
Carrollton-Farmers Branch ISD
-  **Las Colinas Elementary**
Carrollton-Farmers Branch ISD
-  **McCoy Elementary**
Carrollton-Farmers Branch ISD
-  **Charlie McKamy Elementary**
Carrollton-Farmers Branch ISD
-  **McLaughlin/Strickland Elementary**
Carrollton-Farmers Branch ISD
-  **Kathryn S. McWhorter Elementary**
Carrollton-Farmers Branch ISD
-  **Farmers Branch Elementary**
Carrollton-Farmers Branch ISD
-  **Bernice Chatman Freeman Elementary**
Carrollton-Farmers Branch ISD
-  **Furneaux Elementary**
Carrollton-Farmers Branch ISD
-  **R. E. Good Elementary**
Carrollton-Farmers Branch ISD
-  **E. L. Kent Elementary**
Carrollton-Farmers Branch ISD
-  **La Villita Elementary**
Carrollton-Farmers Branch ISD
-  **Annie Heads Rainwater Elementary**
Carrollton-Farmers Branch ISD
-  **Riverchase Elementary**
Carrollton-Farmers Branch ISD
-  **Rosemeade Elementary**
Carrollton-Farmers Branch ISD
-  **Sheffield Elementary**
Carrollton-Farmers Branch ISD
-  **Janie Stark Elementary**
Carrollton-Farmers Branch ISD
-  **June R. Thompson Elementary**
Carrollton-Farmers Branch ISD



CFB ISD - MAY 2023

"BASE SCOPE"

ITEM B1	BASE SCOPE - SAFETY & SECURITY ALL ELEMENTARY SCHOOLS	<input type="checkbox"/> EQUALLY FUNDED ALL CAMPUSES <input type="checkbox"/> ESSENTIAL AND CRITICAL REPLACEMENTS BASED ON NEED
ITEM B2	BASE SCOPE - PLAYGROUND ALL ELEMENTARY SCHOOLS	<input type="checkbox"/> EQUALLY FUNDED ALL CAMPUSES <input type="checkbox"/> ESSENTIAL AND CRITICAL REPLACEMENTS BASED ON NEED
ITEM B3	BASE SCOPE - ROOF ALL ELEMENTARY SCHOOLS	<input type="checkbox"/> REPLACE ROOFS INSTALLED IN 2007 AND EARLIER <input type="checkbox"/> REPLACE ROOF INSTALLED BETWEEN 2008 - 2009
ITEM B4	BASE SCOPE - MECHANICAL ALL ELEMENTARY SCHOOLS	<input type="checkbox"/> REPLACE UNITS INSTALLED IN 2010 AND EARLIER <input type="checkbox"/> REPLACE UNITS INSTALLED BETWEEN 2011 - 2012
ITEM B5	BASE SCOPE - PLUMBING & ELECTRICAL ALL ELEMENTARY SCHOOLS	<input type="checkbox"/> SUFFICIENTLY FUNDED ALL CAMPUSES <input type="checkbox"/> ESSENTIAL AND CRITICAL REPLACEMENTS BASED ON NEED
ITEM B6	BASE SCOPE - FIRE ALARM & FIRE SPRINKLER ALL ELEMENTARY SCHOOLS	<input type="checkbox"/> STRATEGICALLY REPLACING DEVICES <input type="checkbox"/> SYSTEM LEVEL REPAIRS / REPLACEMENTS BASED ON NEED

"THIS IS A PROPERTY TAX INCREASE"

'VERY OLD' CAMPUS CONSIDERATIONS

 **Farmers Branch Elementary**
Carrollton-Farmers Branch ISD

 **Carrollton Elementary**
Carrollton-Farmers Branch ISD

 **Central Elementary**
Carrollton-Farmers Branch ISD



CFB ISD - MAY 2023

"VERY OLD CAMPUSES"

ITEM	CAMPUS REPLACEMENT	<input type="checkbox"/> REPLACE 3 CAMPUSES \$170M
1	CENTRAL CARROLLTON FARMERS BRANCH	<input type="checkbox"/> RENOVATE FOR CRITICAL UPGRADES ONLY \$63.8M

"THIS IS A PROPERTY TAX INCREASE"

'OLD' CAMPUS CONSIDERATIONS



E. L. Kent Elementary
Carrollton-Farmers Branch ISD



Rosemeade Elementary
Carrollton-Farmers Branch ISD



Furneaux Elementary
Carrollton-Farmers Branch ISD



McCoy Elementary
Carrollton-Farmers Branch ISD



CFB ISD - MAY 2023

"OLD CAMPUSES"

ITEM 2	CAMPUS REPLACEMENT DECISION <div> <input type="checkbox"/> REPLACE 4 CAMPUSES \$226.34M </div> <div> <input type="checkbox"/> RENOVATE FOR CRITICAL UPGRADES ONLY (BASE) \$20.28M </div> <div> <input type="button" value="ITEM 2 - SELECT ONE"/> </div>
ITEM 2A	CAMPUS RENOVATIONS PRIORITIZATION <div> <input type="checkbox"/> KENT ROSEMEADE FURNEAUX MCCOY </div> <div> <input type="checkbox"/> FACILITY FINISH UPDATES - REFRESH CAFETERIA, CORRIDORS AND COLLABORATION SPACE. \$28.57M </div> <div> <input type="checkbox"/> FINE ARTS - ART, MUSIC, STAGE FINISH AND EQUIPMENT UPGRADES. \$5.52M </div> <div> <input type="checkbox"/> BASE SCOPE INCLUDES ALL SAFETY & SECURITY ITEMS, BASE PLAYGROUNDS & MAJOR MAINTENANCE </div> <div> <input type="checkbox"/> EARLY CHILDHOOD - SPECIALIZED LEARNING SPACES, FURNITURE, AGE APPROPRIATE BATHROOMS. \$7.26M </div> <div> <input type="checkbox"/> ATHLETICS - RENOVATE GYMS, OFFICES AND STORAGE AREAS WITH NEW FINISHES & EQUIPMENT. \$9.29M </div> <div> <input type="checkbox"/> SPEC ED - SPECIALIZED LEARNING SPACES, BATHROOMS, CHANGING STATIONS. \$4.48M </div> <div> <input type="checkbox"/> KITCHEN - RENOVATE FINISHES, REPLACE EQUIPMENT INCLUDING COOLER / FREEZERS. \$10.47M </div> <div> <input type="checkbox"/> PLAYGROUNDS - EXPAND BASE SCOPE TO (2) PLAY AREAS AND OUTDOOR LEARNING. \$1.75M </div> <div> <input type="button" value="PRIORITIZE 1-7 (1 IS HIGHEST PRIORITY)"/> </div>

"THIS IS A PROPERTY TAX INCREASE"

'OLD-ISH' CAMPUS CONSIDERATIONS



Country Place Elementary
Carrollton-Farmers Branch ISD



Annie Heads Rainwater Elementary
Carrollton-Farmers Branch ISD



Dale B. Davis Elementary
Carrollton-Farmers Branch ISD



Charlie McKamy Elementary
Carrollton-Farmers Branch ISD



CFB ISD - MAY 2023

"OLD-ISH CAMPUSES"

ITEM
3

CAMPUS RENOVATIONS PRIORITIZATION

COUNTRY PLACE
RAINWATER
DAVIS
MCKAMY

BASE SCOPE INCLUDES
ALL SAFETY & SECURITY
ITEMS, BASE
PLAYGROUNDS & MAJOR
MAINTENANCE. \$19.5M

☐ **FACILITY FINISH UPDATES** -
REFRESH CAFETERIA AND
CORRIDORS AND
COLLABORATION SPACE. \$25.71M

☐ **FINE ARTS** - ART, MUSIC, STAGE
FINISH AND EQUIPMENT
UPGRADES. \$5.52M

☐ **EARLY CHILDHOOD** -
SPECIALIZED LEARNING SPACES,
FURNITURE, AGE APPROPRIATE
BATHROOMS. \$7.26M

☐ **ATHLETICS** - RENOVATE GYMS,
OFFICES AND STORAGE AREAS
WITH NEW FINISHES &
EQUIPMENT. \$9.29M

☐ **SPECIAL ED** - SPECIALIZED
LEARNING SPACES, BATHROOMS,
CHANGING STATIONS. \$5.60M

☐ **KITCHEN** - RENOVATE FINISHES,
REPLACE EQUIPMENT INCLUDING
COOLER / FREEZERS. \$8.94M

☐ **PLAYGROUNDS** - EXPAND BASE
SCOPE TO (2) PLAY AREAS AND
OUTDOOR LEARNING. \$1.75M

PRIORITIZE 1-7
(1 IS HIGHEST PRIORITY)

"THIS IS A PROPERTY TAX INCREASE"

'NEW-ISH' CAMPUS CONSIDERATIONS



 **Dave Blair Elementary**
Carrollton-Farmers Branch ISD

 **Janie Stark Elementary**
Carrollton-Farmers Branch ISD

 **Tom Landry Elementary**
Carrollton-Farmers Branch ISD

 **McLaughlin/Strickland Elementary**
Carrollton-Farmers Branch ISD



CFB ISD - MAY 2023

"NEW-ISH CAMPUSES"

ITEM
4

CAMPUS RENOVATIONS PRIORITIZATION

BLAIR
STARK
LANDRY
MCSTRICT

BASE SCOPE INCLUDES
ALL SAFETY & SECURITY
ITEMS, BASE
PLAYGROUNDS & MAJOR
MAINTENANCE. \$20.28M

☐ **FACILITY FINISH UPDATES** -
REFRESH CAFETERIA AND
CORRIDORS AND
COLLABORATION SPACE. \$28.02M

☐ **FINE ARTS** - ART, MUSIC, STAGE
FINISH AND EQUIPMENT
UPGRADES. \$5.52M

☐ **EARLY CHILDHOOD** -
SPECIALIZED LEARNING SPACES,
FURNITURE, AGE APPROPRIATE
BATHROOMS. \$7.26M

☐ **ATHLETICS** - RENOVATE GYMS,
OFFICES AND STORAGE AREAS
WITH NEW FINISHES &
EQUIPMENT. \$4.85M

☐ **SPEC ED** - SPECIALIZED
LEARNING SPACES, BATHROOMS,
CHANGING STATIONS. \$4.48M

☐ **KITCHEN** - RENOVATE FINISHES,
REPLACE EQUIPMENT INCLUDING
COOLER / FREEZERS. \$8.45M

☐ **PLAYGROUNDS** - EXPAND BASE
SCOPE TO (2) PLAY AREAS AND
OUTDOOR LEARNING. \$1.75M

PRIORITIZE 1-7
(1 IS HIGHEST PRIORITY)

"THIS IS A PROPERTY TAX INCREASE"

'NEW' CAMPUS CONSIDERATIONS

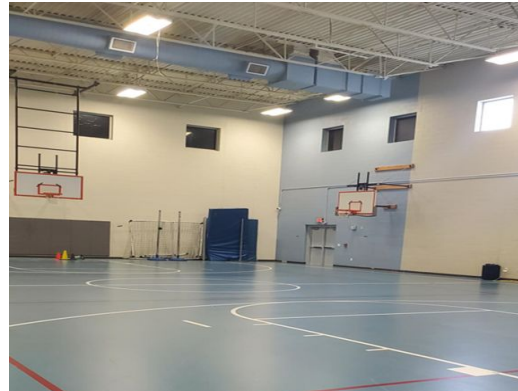
 **Kathryn S. McWhorter Elementary**
Carrollton-Farmers Branch ISD

 **Bernice Chatman Freeman Elementary**
Carrollton-Farmers Branch ISD

 **Riverchase Elementary**
Carrollton-Farmers Branch ISD

 **June R. Thompson Elementary**
Carrollton-Farmers Branch ISD

 **Blanton Elementary**
Carrollton-Farmers Branch ISD



CFB ISD - MAY 2023

"NEW CAMPUSES"

ITEM	CAMPUS RENOVATIONS PRIORITIZATION		FACILITY FINISH UPDATES - REFRESH CAFETERIA AND CORRIDORS AND COLLABORATION SPACE. \$32.22M
5	MCWHORTER FREEMAN RIVERCHASE THOMPSON BLANTON	<input type="checkbox"/>	FINE ARTS - ART, MUSIC, STAGE FINISH AND EQUIPMENT UPGRADES. \$6.90M
	BASE SCOPE INCLUDES ALL SAFETY & SECURITY ITEMS, BASE PLAYGROUNDS & MAJOR MAINTENANCE. \$22.85M	<input type="checkbox"/>	EARLY CHILDHOOD - SPECIALIZED LEARNING SPACES, FURNITURE, AGE APPROPRIATE BATHROOMS. \$9.07M
		<input type="checkbox"/>	ATHLETICS - RENOVATE GYMS, OFFICES AND STORAGE AREAS WITH NEW FINISHES & EQUIPMENT. \$11.61M
		<input type="checkbox"/>	SPEC ED - SPECIALIZED LEARNING SPACES, BATHROOMS, CHANGING STATIONS. \$5.60M
		<input type="checkbox"/>	KITCHEN - RENOVATE FINISHES, REPLACE EQUIPMENT INCLUDING COOLER / FREEZERS. \$8.89M
		<input type="checkbox"/>	PLAYGROUNDS - EXPAND BASE SCOPE TO (2) PLAY AREAS AND OUTDOOR LEARNING. \$2.18M
		<div>PRIORITIZE 1-7 (1 IS HIGHEST PRIORITY)</div>	

"THIS IS A PROPERTY TAX INCREASE"

'VERY NEW' CAMPUS CONSIDERATIONS



CFB ISD - MAY 2023

"VERY NEW CAMPUSES"

ITEM
6

CAMPUS RENOVATIONS PRIORITIZATION

SHEFFIELD
GOOD
LAS COLINAS
LA VILLITA

BASE SCOPE INCLUDES
ALL SAFETY & SECURITY
ITEMS, BASE
PLAYGROUNDS & MAJOR
MAINTENANCE. \$19.09M

☐ **FACILITY FINISH UPDATES -**
REFRESH CAFETERIA AND
CORRIDORS AND
COLLABORATION SPACE. \$21.62M

☐ **FINE ARTS -** ART, MUSIC, STAGE
FINISH AND EQUIPMENT
UPGRADES. \$4.14M

☐ **EARLY CHILDHOOD -**
SPECIALIZED LEARNING SPACES,
FURNITURE, AGE APPROPRIATE
BATHROOMS. \$5.44M

☐ **ATHLETICS -** RENOVATE GYMS,
OFFICES AND STORAGE AREAS
WITH NEW FINISHES &
EQUIPMENT. \$7.07M

☐ **SPEC ED -** SPECIALIZED
LEARNING SPACES, BATHROOMS,
CHANGING STATIONS. \$3.36M

☐ **PLAYGROUNDS -** EXPAND BASE
SCOPE TO (2) PLAY AREAS AND
OUTDOOR LEARNING. \$1.53M

☐ **PRIORITIZE 1-6**
(1 IS HIGHEST PRIORITY)

"THIS IS A PROPERTY TAX INCREASE"

MEETING #7 (December 8th - Nancy Watten)

Review ES Prioritization Feedback

Prioritize: Secondary & Support Facilities

Start packaging exercise

MEETING #8 (RECOMMENDED Dec 15th)

Review Secondary Prioritization Feedback

PACKAGE THE BOND (put a bow on it)



Thank You!

Notes & Reflections