



What is Integrated Pest Management (IPM)?

IPM is a combination of common sense and scientific principles. It's a way of thinking about pest management that values our environment, students and staff.



IPM focuses on long - term prevention focusing on preventative measures



LVUSD Policies



LVUSD does not use Herbicides or Pesticides.

The Las Virgenes Unified School District has a Pesticide Free Policy that does not allow for the use of toxic pesticides unless an EMERGENCY situation exists.

The District will notify parents/guardians, employees and students of chemical application utilizing the following guidelines:

1. Parents/guardians can request a notification letter by contacting the IPM Coordinator at 818-578-5274

This notification letter will include:

- a. The District's IPM policy statement
 - b. The chemical to be used
 - c. The availability and location of IPM activity records and product MSDS information sheets.
2. School sites will receive notification whenever chemicals are to be used at their school site. This notification will be physically posted at or near the location where the chemical product is to be applied. If the posting cannot be placed at or near the area of treatment, then this posting will be placed at a prominent access point into the campus area. The notification will be posted a minimum of 24 hours prior to spraying and will remain up a minimum of 72 hours after spraying.
- a. Product name and its active ingredients
 - b. Date of use
 - c. EPA number
 - d. Contact number for additional information
4. Postings regarding herbicide application will be the responsibility of the District's Grounds Department. Posting for private pest control applicators will be the responsibility of the site plant manager and the applying contractor. The same posting criteria listed above will be in effect.
5. The District will maintain an IPM information phone number (818-878-5239) and an internet based website (www.lvusd.org). These information sites will be updated weekly. Parents/Guardians and staff will also have access to additional information through the Federal Government's EPA website (www.epa.gov/pesticides/ipm).

The District strives to never use toxic pesticides, or herbicides and authorizes their use only in the rare event of a grave threat to the health and safety of the school community when effective alternatives are not available.



LVUSD Practices



Problem	Strategy
Weeds	Use Mulch and Remove by Pulling Weeds
Ants	Eliminate Water and Food Source
Gophers	Trap and Carbon Monoxide
Roaches/Mice	Eliminate Water and Food Source - Trap
Bees	Relocate Hive
Snakes	Call a Professional Snake Wrangler

The School District has assigned the Director of Maintenance and Operations & Facilities to carry out the requirements of the Healthy Schools Act, as the designated IPM coordinator for the District. Parents and staff can access the District's Pesticide Free Policy and the following directions: Information regarding pesticides may be obtained at the California Department of Pesticide Regulation or you may call the National Pesticide Telecommunications Network at 1-800-858-7378. This toll-free service is funded by EPA and operated by Oregon State University. The service is available from 9:30 a.m. to 7:30 p.m. EST Monday through Friday.



LVUSD Notifications



Warning Signs

The IPM Coordinator shall post a warning sign at each area of the school site where pesticides will be applied that shall be visible to all persons entering the treated area. The sign shall be posted at least 24 hours prior to the application and until 72 hours after the application. The warning sign shall prominently display the following information: (Education Code 17612)

1. The term "Warning/Pesticide Treated Area"
2. The product name, manufacturer's name, and the EPA's product registration number
3. Intended areas and dates of application
4. Reason for the pesticide application

When advance posting is not possible due to an emergency condition requiring immediate use of a pesticide, to protect the health and safety of students, staff, or other persons or the school site, the warning sign shall be posted immediately upon application and shall remain posted until 72 hours after the application. (Education Code 17609, 17612)

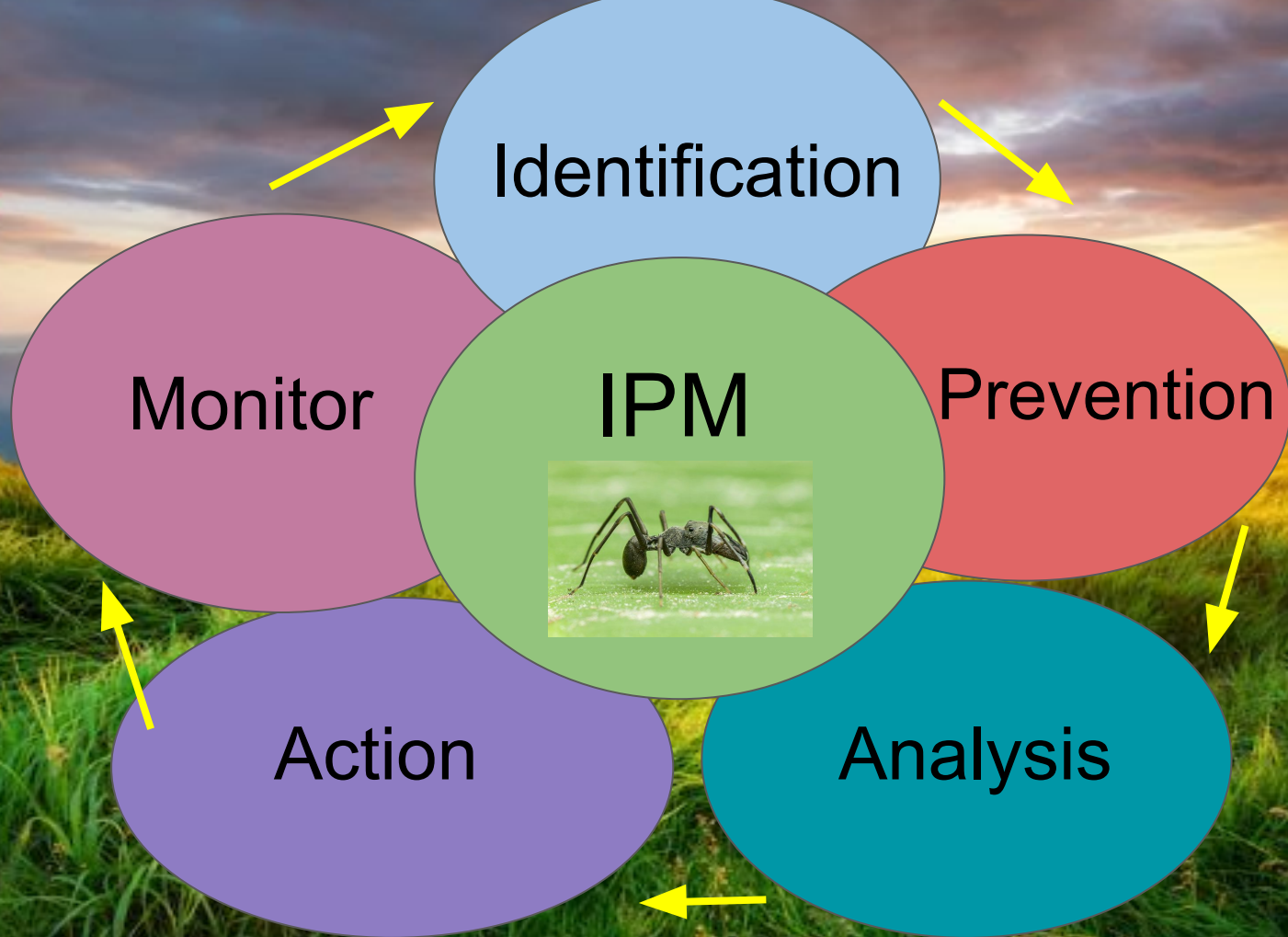
Records

At the end of each calendar year, the IPM coordinator shall submit to DPR, on a form provided by DPR, a copy of the records of all pesticide use at the school site for that year, excluding any pesticides exempted by law and any pesticide use reported by the pest control operator pursuant to Food and Agricultural Code 13186. The IPM coordinator may submit more frequent reports at his/her discretion. (Education Code 17611)

Each school site shall maintain records of all pesticide use at the school for four years, and shall make the information available to the public, upon request, in accordance with the California Public Records Act. A school may meet this requirement by retaining a copy of the warning sign posted for each pesticide application with a recording on that copy of the amount of the pesticide used. (Education Code 17611)

IPM Overview

The image features a vibrant landscape of rolling green hills and mountains. The sun is setting behind the mountains, creating a warm, golden glow that illuminates the scene. The sky is filled with soft, colorful clouds in shades of orange, yellow, and blue. The foreground is dominated by lush, green grasses that appear to be blowing in the wind. The overall atmosphere is peaceful and natural.





How Does IPM Work?

- 🐞 Pest Identification
- 🐞 Monitoring and assessing pest numbers and damage
- 🐞 Preventing pest problems
- 🐞 Using a combination of biological, cultural, physical/mechanical management tools
- 🐞 Control after action is taken, assessing the effect of pest management

Biological Control - Use of natural enemies - predators, parasites, pathogens, and competitors to control pests

Cultural Control - Practices that reduce pest establishments, reproduction, dispersal, and survival

Mechanical and Physical Control - Controls that kill a pest directly, block pests out, or make the environment unuseable. Using a trap for rodents is an example of mechanical control, physical controls are weed management, barriers and companion planting.



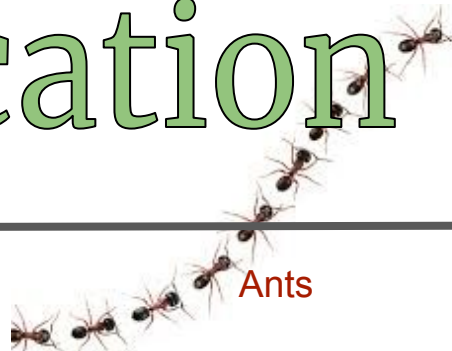
Identification



Roaches



Termites



Ants



Rats



Ground
Squirrels



Gophers



Rabbits



Analysis



Research



What pests are entering? Identify Pests



Determine why they are entering? Is there a plumbing leak, food, or soft furniture?



How are the pests entering? Look for an entryway



Prevention



Biological Pest Control



Use living organisms that are predators to control pests



Many insects are beneficial in controlling other insects








Plant Insectary plants. They attract, feed, and shelter insect parasites and predators to enhance biological pest control



Prevention



Steps

-  Housekeeping - Keep Rooms Clean to Prevent Invasions
-  Caulk Around Buildings, Pipes, Windows, Doors and Fill Cracks
-  Change Habits - Close Doors, Don't leave Out Food or Water
-  Keep Trash Enclosures Clean and Free of Debris
-  Keep Food in Air Tight Containers



Monitoring



What are Pests Looking For?

Food



Water



Shelter





Action



Take Control



Trim plants eliminating Shelter for Rodents



Repair Irrigation and Plumbing Leaks Removing Water Source



Install Lids on Trash Bins Removing Food & Shelter Source

