

Local Control and Accountability Plan

SCHOOL STORY

638 6th-12th grade STUDENTS

3 SCHOOLS

13 STUDENTS PER TEACHER

71 EMPLOYEES

STUDENT GROUPS

- 63%**
Low Income
- 4%**
English Learners
- <1%**
Foster Youth
- 55%**
Unduplicated Students

Overarching Goal

To develop students to be respectful citizens, active communicators, open-minded and technologically proficient thinkers and problem solvers, and self-directed learners

Student-Centered

Offering one-to-one technology, STEM-focused curriculum, a small family-like campus, and a safe environment

Our Mission

To prepare every student for 21st century college & career expectations by providing a rigorous curriculum relevant to local and global workforce and economic demands through blended virtual and community-based learning opportunities

BUDGET

2022-23 Expenditures

- General Fund Expenditures: **\$8,079,542**
- LCAP Expenditures: **\$6,048,900**
- LCAP Expenditures for High Needs Students: **\$647,703**
- Expenditures not included in the LCAP: **\$2,030,642**

Specified LCAP expenditures make up **8%** of General Fund expenditures.

GOAL #1

INVESTING **\$236,516**

Ensure All Students Are College & Career Ready

HIGHLIGHTED EXPECTED OUTCOMES & METRICS

	IMPROVE GRADUATION RATE	↑ 95%
	RAISE ENGLISH LEARNER RECLASSIFICATION RATE	↑ 25%
	INCREASE % STUDENTS PREPARED FOR COLLEGE ACCORDING TO CCI	↑ 40%
	IMPROVE A-G COMPLETION RATE	↑ 60%
	INCREASE CTE PATHWAY COMPLETION RATE	↑ 50%

HIGHLIGHTED ACTIONS, EXPENDITURES & TARGETS

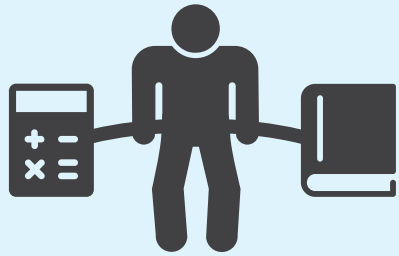
1.1 - Escort students on guided tours to College, University, and Career-related destinations each semester to increase their access to higher education.	\$25,450	
1.4 - Provide extended day tutoring available to students, virtually 7 days a week and in-person, before and after school.	\$29,945	
1.9 - Offer credit retrieval options for identified students in grades 9-12 who have been unsuccessful in traditional core content classes.	\$25,166	
1.12 - Provide supplemental instructional materials and supplies for students to use at school and at home to provide equitable learning environments and to raise student achievement.	\$18,860	

Local Control and Accountability Plan

GOAL

#2

INVESTING
\$391,611



Provide a 21st Century Learning Environment & Rigorous Curriculum

HIGHLIGHTED EXPECTED OUTCOMES & METRICS

	INCREASE QUALIFYING AP EXAM SCORES	↑ 40%
	INCREASE STUDENTS TAKING AP CLASSES (LEA-WIDE)	↑ 3,800
	MAINTAIN ACCESS TO A BROAD COURSE OF STUDY	= 100%

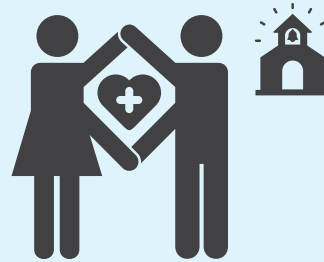
HIGHLIGHTED ACTIONS, EXPENDITURES & TARGETS

2.1 - Enhance counseling services to ensure equitable access to academic & personal growth.	\$91,213	
2.4 - Increase access to AP classes for Low Income, Foster Youth, and English Learner students.	\$2,967	
2.6 - Offer AVID electives to all students.	\$103,325	
2.7 - Enhance academic technology and services.	\$11,200	

GOAL

#3

INVESTING
\$5,404,446



Cultivate a Safe, Secure, and Positive School Culture

HIGHLIGHTED EXPECTED OUTCOMES & METRICS

	MAINTAIN ZERO PERCENT EXPULSION RATE	= 0%
	INCREASE ATTENDANCE RATE	↑ 95%
	REDUCE DROPOUT RATE	↓ 5%

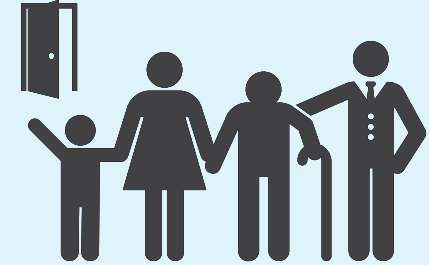
HIGHLIGHTED ACTIONS, EXPENDITURES & TARGETS

3.5 - Maintain CTE programs.	\$259,543	
3.6 - Implement reengagement interventions to address attendance & chronic absenteeism.	\$2,500	
3.7 - Implement a Multi-Tiered System of Support.	\$22,027	
3.11 - Ensure safe, secure, & positive learning environments.	\$142,265	

GOAL

#4

INVESTING
\$20,327



Build Relationships with Educational Partners

HIGHLIGHTED EXPECTED OUTCOMES & METRICS

	INCREASE PARTICIPATION IN PARENT CLIMATE SURVEY	↑ 200
	INCREASE FOLLOWERS ON THE DISTRICT APP	↑ 1,710
	CONTINUE TO MEET LOCAL INDICATOR: PARENT AND FAMILY ENGAGEMENT	= Standard Met

HIGHLIGHTED ACTIONS, EXPENDITURES & TARGETS

4.1 - Maintain a Student Information System.	\$0	
4.3 - Support Parent /Family Collaboration.	\$1,237	
4.5 - Coordinate services to increase communication with families and community partners.	\$2,000	
4.7 - Expand Parent University to provide families with additional workshops and conferences.	\$14,690	

