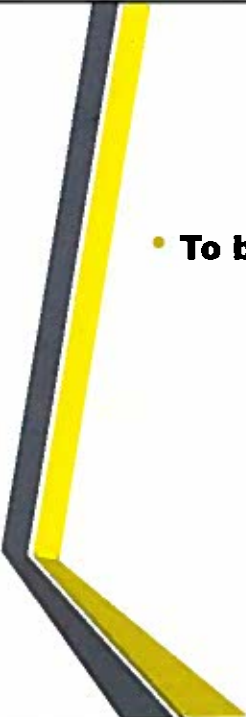



Teaching & Learning Report

Ward Elementary
October 14, 2015



School Vision



- **To become a “School of Distinction”.**

School of Distinction Requirements



Unbridled Learning: College and/or Career-Ready for All

2015 Locked Overall Accountability Cut Scores

Type	Level	Proficient	Distinguished ¹	School of Distinction ²
School	Elementary (ES) Overall Score	67.2	72.8	76
School	Middle (MS) Overall Score	65.8	70.2	72.5
School	High (HS) Overall Score	70.2	75.4	77.7
District	District (AL) Overall Score	68.2	70.5	71.9

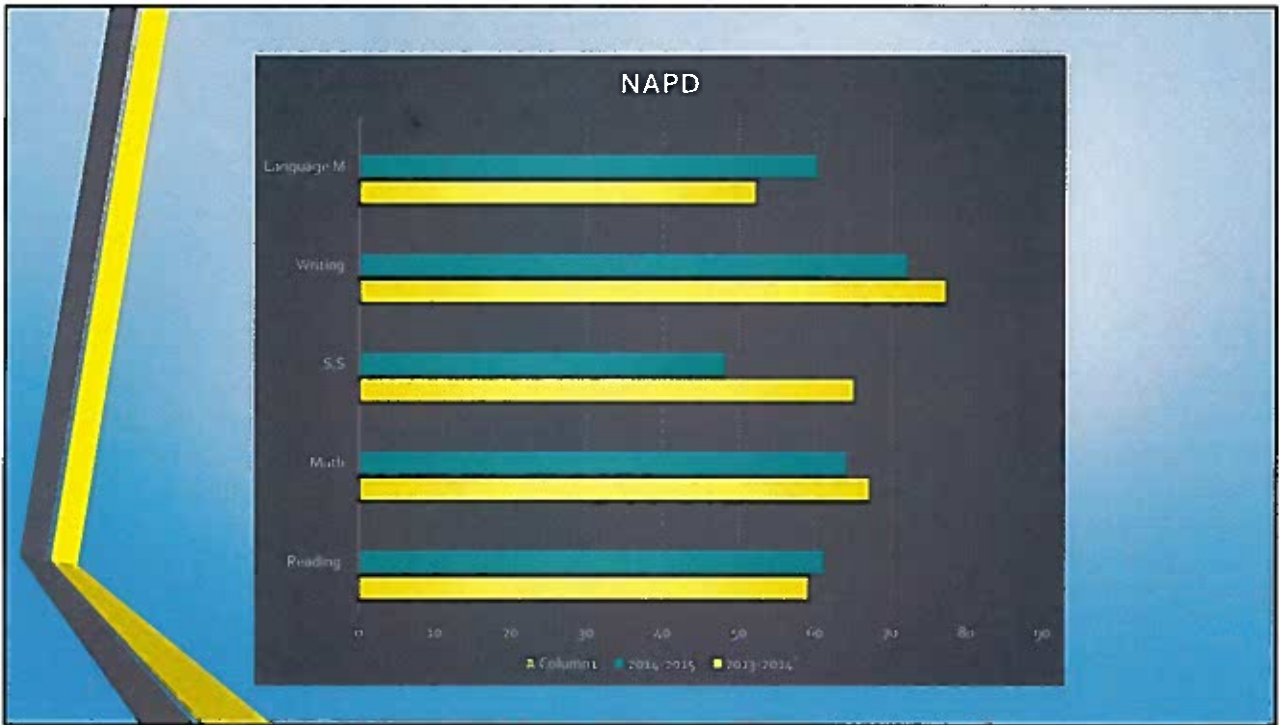
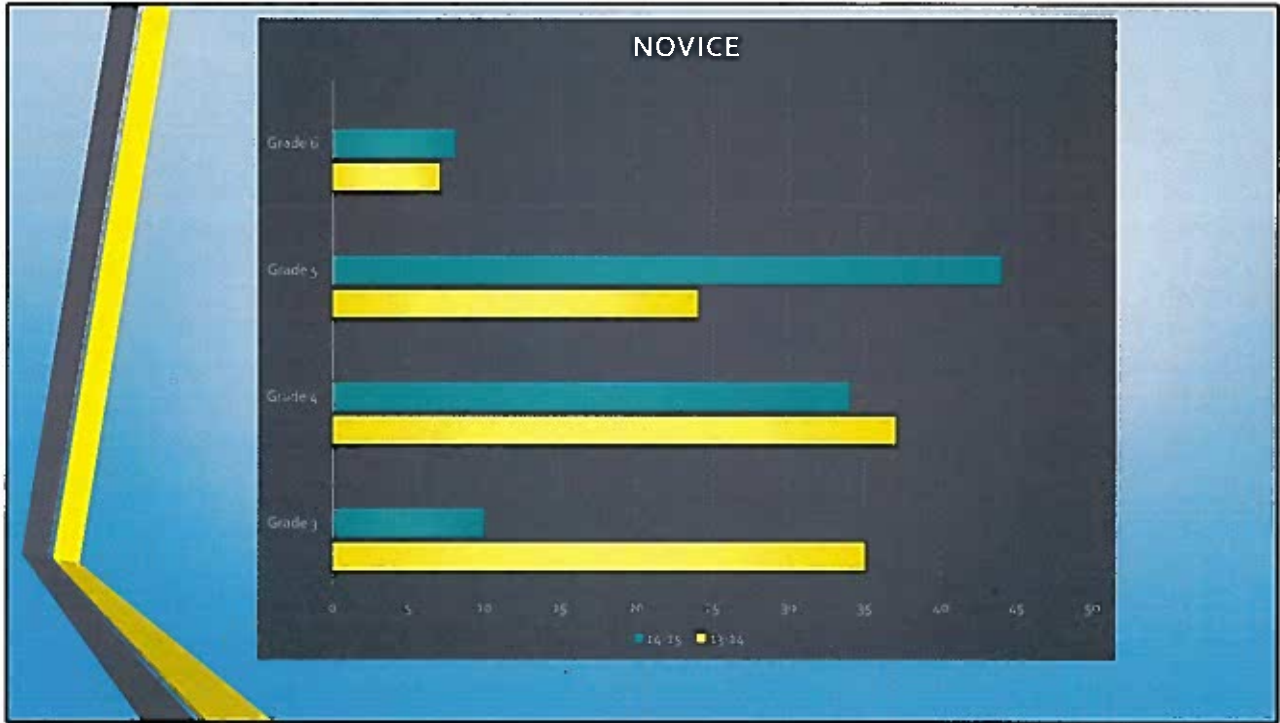
¹A Distinguished School/District can also be considered High Performing, but must also meet its current year AMO, student participation rate and the graduation rate must be above 60. In addition, the school/district cannot be labeled as Priority or Focus.

²A School/District of Distinction must also meet its current year AMO, student participation rate and the graduation rate must be above 60. In addition, the school/district cannot be labeled as Priority or Focus.

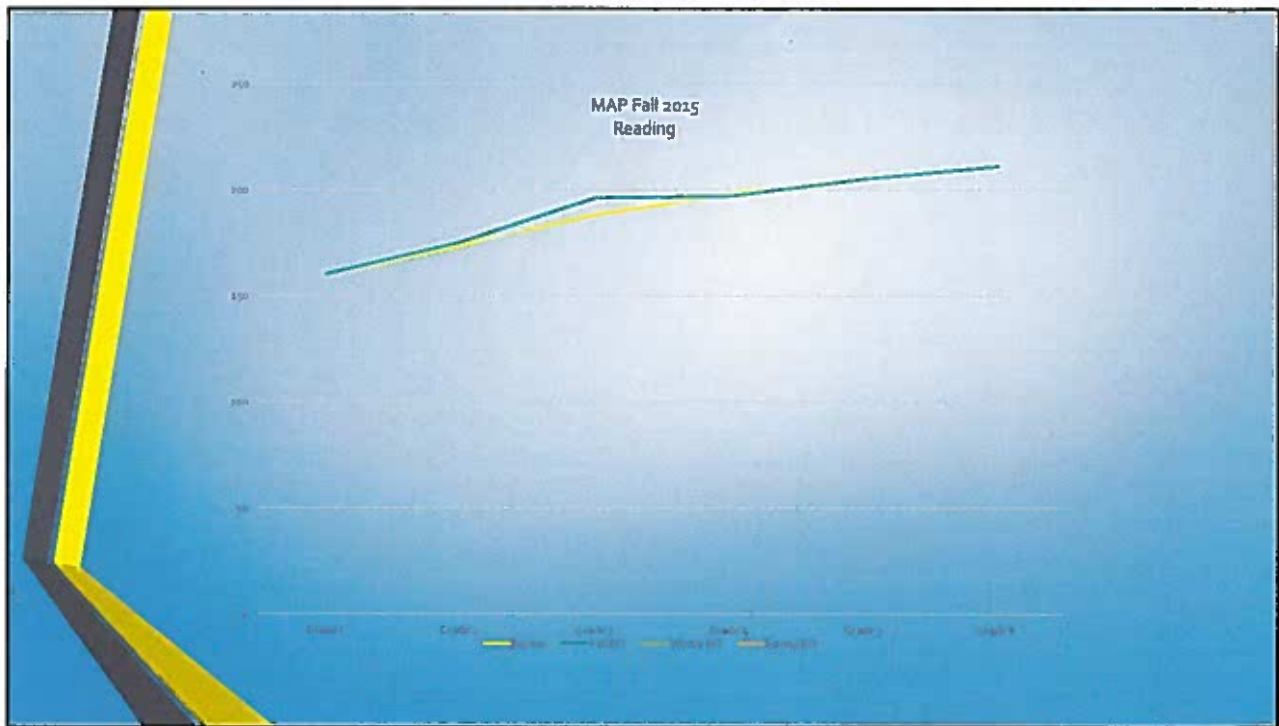
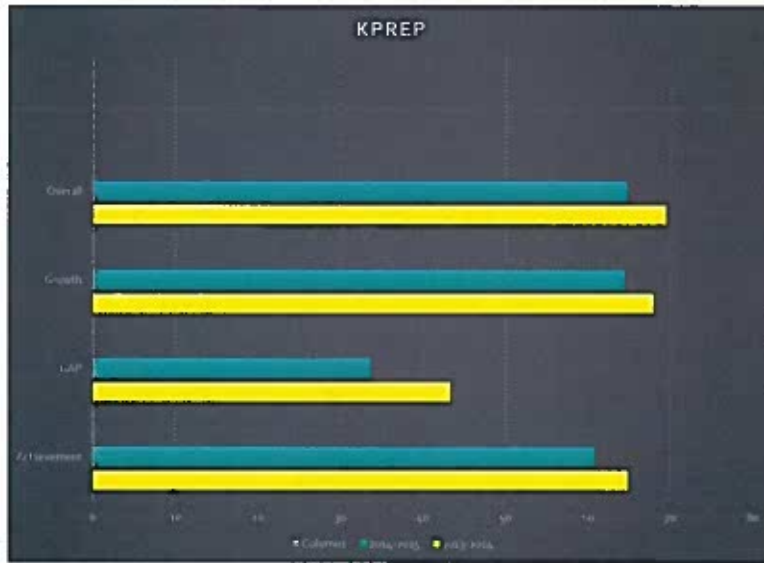
Student Assessment Data

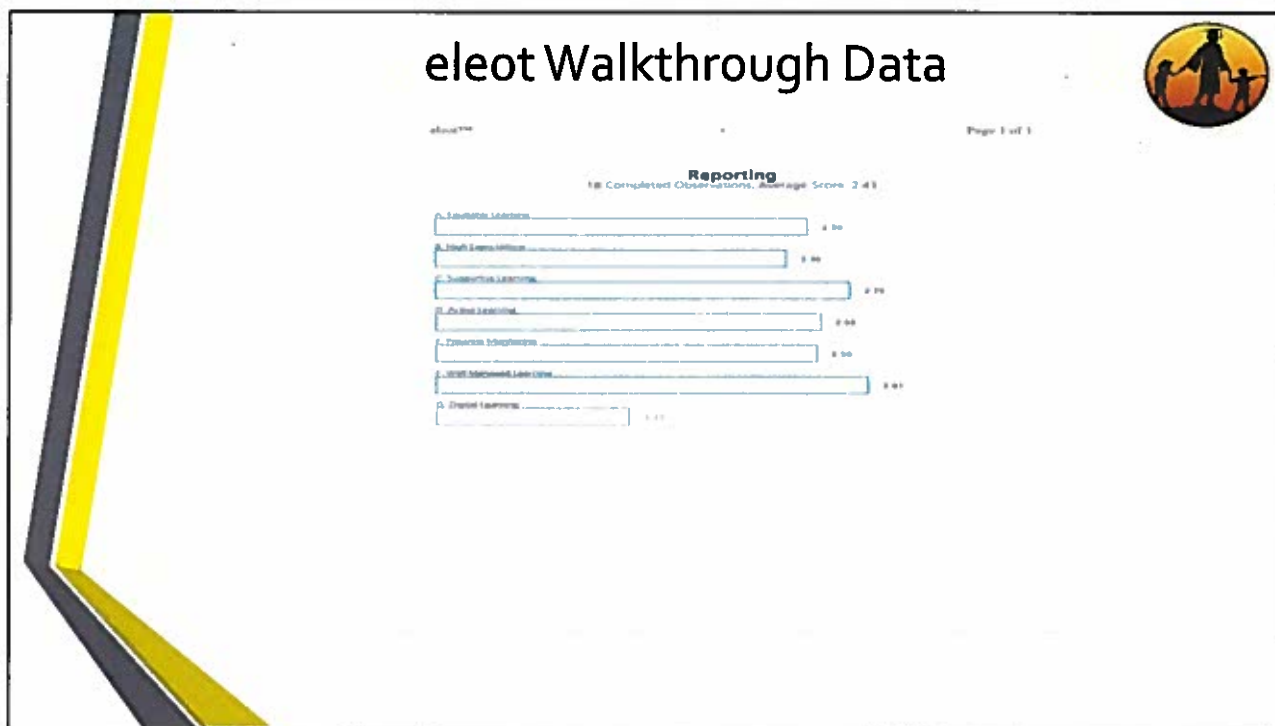
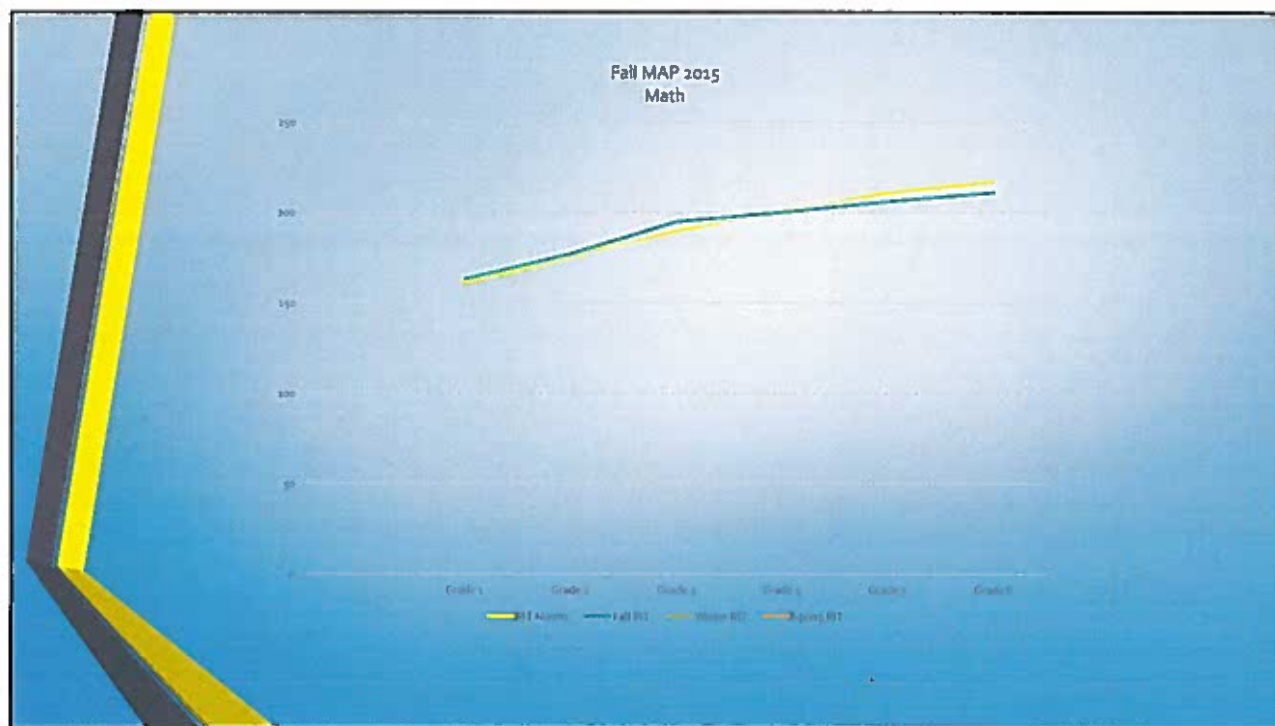


- Current score 64.7 Percentile rank of 58 down from 79.
- Did not meet AMO of 69.9. Needed to go from 69.4 to 69.9.
- Growth index for current year above state and district in reading and math.
- Overall NAPD in Reading increased from 59 to 61 and increase in Language Mechanics from 52 to 59.
- 6th grade students scored 79% proficient/distinguished in writing.
- Increase in students performing Novice 4th and 5th grades.
- Social Studies testing (5th) saw an increase in Novice.



Student Assessment Data





School Improvement Priorities



- Reduce number of novice students in all content areas. Have met with novice reduction coach to begin process of analyzing and next steps. (26 in Reading and 14 in Math) Staff will be assigned to mentor specific students throughout the year.
- Revised Intervention schedule and increased documentation.
- Increase in referrals for special ed. Testing
- Parent Engagement nights to inform parents of what it takes for their child to be successful.
- Return to On Demand Fridays
- Improve PLC protocols to look specifically at student data to make changes to instruction.

School Improvement Priorities



Student Engagement
Professional Learning
Building Culture
Data Analysis
Community Involvement

