

SPS QUARTERLY

Welcome to the second edition of the SPS Quarterly, a publication created to keep our community-based organizations and partners, City Board members and staff, faith-based organizations, business leaders and the community at large informed about what’s happening in Stamford Public Schools.



Dr. Tamu Lucero
Superintendent,
Stamford Public Schools

2023-24 Operating Budget

Stamford Public Schools recently presented its 2023-24 proposed operating budget to the Board of Education. The district is requesting a 3.98 percent increase for FY24, driven by higher health care premiums, increased fuel and gas costs, and special education expenses. The proposed budget enables us to maintain all present programs and services without adding new initiatives.

To learn more about the FY24 proposed operating budget, check out the fact sheet and FAQ available [here](#). I also encourage you to [view the presentation](#) made by Director of Finance Ryan Fealey during the January Community Conversation event hosted by Stamford PT Council.

We are asking families and the community to support the proposed operating budget so SPS can maintain programs and services for our 16,200+ students.



District Snapshot: Spending Comparison

2021-22 Spending Per Pupil: Fairfield County[^]

District	Enrollment	NCEP			
1. Redding	1,215	\$26,621	11. Fairfield	9,359	\$21,581
2. Greenwich	8,378	\$26,311	12. Norwalk	11,881	\$21,396
3. Weston	2,208	\$24,262	13. New Fairfield	2,081	\$21,314
4. Sherman	387	\$24,170	14. Stamford	16,034	\$20,679
5. Westport	5,278	\$24,149	15. Newtown	4,073	\$20,035
6. Darien	4,708	\$23,180	16. Bridgeport	18,972	\$18,748
7. Wilton	3,715	\$22,980	17. Stratford	7,068	\$18,721
8. Ridgefield	4,564	\$22,394	18. Monroe	3,377	\$17,837
9. New Canaan	4,154	\$22,164	19. Trumbull	6,772	\$17,628
10. Easton	1,303	\$21,953	20. Bethel	3,126	\$17,507

[^]Data for Danbury and Shelton not yet available.

2021-22 Spending vs. State Average*

	Stamford	State Average*	Variance
Instruction	\$192,435,956	\$184,126,493	\$8,309,463
Support Services	\$53,294,953	\$54,823,218	(\$1,528,265)
Central Office	\$4,537,575	\$10,086,295	(\$5,548,720)
Transportation & Operations	\$43,317,662	\$41,708,083	\$1,609,579
Sum	\$293,586,146	\$293,586,146	

Compared to the State Average, SPS Spends:

- **5% MORE** on Instruction
- **Within 1%** on Support Services
- **45% LESS** on Central Office

*Scaled to SPS 2021-22 Budget. Source: CSDE. Per Pupil Expenditures by Function, 2020-21 (as of 11/3/2022). Available [here](#).

SPS Ranks 14th in Per Pupil Spending

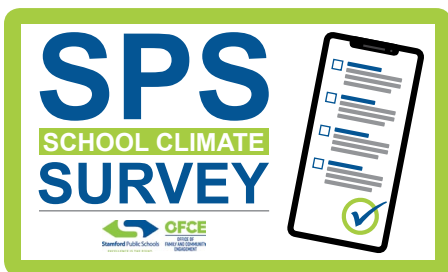
2023-2024 School Registration



It's hard to believe, but it's time to [register](#) students for the 2023-24 school year! Children who live in Stamford and turn five years old on or before January 1, 2024, are eligible to begin kindergarten in Stamford Public Schools in August.

Please encourage anyone with a child eligible for kindergarten to register as soon as possible. Early registration enables us to better manage enrollment and staffing for the upcoming year. Click [here](#) for more information.

2022-23 Climate Survey



One of our strategic priorities is to ensure that our schools are inclusive and supportive of all students, families, teachers and staff. Each of our schools is already

working to enhance the school climate within their buildings, and administrators should be sharing information about these efforts with families.

Families will be asked to complete the 2022-23 Climate Survey from March 20 to 31. This annual survey helps us understand the quality of school relationships and how welcome and comfortable our students, families and staff feel in their buildings. The survey link will be communicated via my weekly message and by school staff, parent organizations, and community partners.

Please encourage all SPS families to complete this survey, as it provides feedback that helps us improve our programs and services.

2023-24 Calendar

(Adopted 01/24/2023)

Month	Days	Notes
July	1-31	Summer break
August (2 Days)	1-31	Aug. 23-28: New teacher orientation, Convocation & school-based PD Aug. 24: Mandated Training / Classroom Prep Aug. 25: District PD Aug. 28: K, 6, 9 orientation & school-based PD Aug. 29: First Day of School students
September	1-30	Sept. 6: Sept. 6 Sept. 11: Sept. 11 Sept. 2: Sept. 2 Sept. 7: Sept. 7
October	1-31	Oct. 1: Election Day, no school students, PD Oct. 10: Veterans Day, no school Oct. 22: All Early Release Oct. 24-25: Thanksgiving recess, no school
November (18 Days)	1-30	
December (16 Days)	1-31	Dec. 13-15: All District - Early Release/Conferences Dec. 22: Early Release, all Dec. 26-30: Winter Recess, no school
January (20 Days)	1-31	
February	1-29	
March (20 Days)	1-31	
April (16 Days)	1-30	April 10: Eid al-Fitr, no school April 15-19: Spring Recess, no school

On January 24, the Stamford Board of Education approved the 2023-24 District Calendar.

Next year, schools will be closed in observance of the following federal and religious holidays: Labor Day, Yom Kippur, Columbus Day, Veterans Day, Thanksgiving

Day, Christmas Day, New Year's Day, Martin Luther King, Jr. Day, Presidents' Day, Good Friday, Eid-al-Fitr, and Memorial Day.

The 2023-24 SPS District Calendar is available to view and download [here](#).

Annual Well-Visits

Is your teen's birthday coming up? Schedule their yearly physical now.

Yearly physicals, also known as well-child visits, are important to make sure your teen is up-to-date on vaccines and check on their growth.

Appointments for physicals fill up quickly around the start of school. Don't delay, schedule their physical now.

Plus, students in 6th and 9th grade are required to complete a physical for school.

For more information, please scan the QR code or call 203-977-5385.

All students entering kindergarten, 6th and 9th grades in Fall 2023 are required to complete an annual physical. The Stamford Department of Health encourages parents to schedule their child's annual physical around their birthday rather than waiting until the physical is needed.

Families that do not have a pediatrician can utilize the free, full-service student health centers at Westhill, Stamford High, Cloonan, Dolan/Toquam and Rippowam/AITE for their child's annual physical. These health centers, which are operated in partnership with Family Centers, are open during school hours. For more information or to register to use the health centers, [click here](#) or view this [flyer](#).

CT Automatic Admissions Program (CAAP)



There's exciting news for SPS students who want to pursue post-secondary education. In 2021, the Connecticut Legislature set requirements for the Connecticut Automatic Admissions Program (CAAP). Through CAAP, qualifying high school students can be automatically admitted to participating Connecticut Colleges and Universities.

The class of 2023 is the first cohort eligible for CAAP. For more information visit the [CT portal](#) or the [Connecticut State Colleges & Universities \(CSCU\)](#) webpage.

Improving Attendance and Engagement



Regular school attendance improves academic outcomes. The Office for School Development is working with the City of Stamford Youth Services Bureau to enhance our capacity to monitor and improve student attendance, and school-based teams are meeting regularly to review attendance data and create strategies to reach the chronically absent.

In addition, the newly formed Office of Access and Opportunity is working with schools and community partners to increase engagement and attendance among secondary school students.

Right to Read



In 2021, the Connecticut legislature passed "Right to Read" legislation that calls for a statewide approach to literacy instruction based on the Science of Reading.

Beginning in Fall 2023, districts will be required to begin implementing one of seven state approved reading curriculum models. Stamford Public Schools already has been studying and implementing components of the Science of Reading, and we are developing a comprehensive early-grade reading plan as part of our curriculum audit work. We are confident that our early

literacy plan will meet the Right to Read requirements.

Building for the Future

As part of the Long-Term Master Facilities Plan, we continue to submit school construction plans to the state for approval and placement on the Department of Administrative Services priority list.

The Westhill High School plan was approved for reimbursement in December 2021, and the plan to rebuild Roxbury was added to the state priority list in December 2022. Thanks to our Stamford Delegation in Hartford, the state reimbursement rate for these projects will be 60%.

We are currently working on the application to build a new K-8 school on the South End.

HVAC Indoor Air Quality Grants

The Board of Education, in collaboration with the City of Stamford, has submitted applications to the State of Connecticut for HVAC Indoor Air Quality Grants available for public school projects.

If our applications are approved, the city could receive up to \$14 million in reimbursements for HVAC projects that are part of the Long-Term Facilities Plan.

Thank you to our Directors of Facilities, the city Grants and OPM offices, the Mayor's Office and our City Board members for their support of this application.

Changes to Board of Education (BOE)

I want to take a moment to welcome [BOE](#) members Lisa Butler, Michael Hyman, and Versha Munshi-South who were elected to the BOE in November 2022.

I also want to offer my thanks and gratitude to Jennienne Burke, Dan Dauplaise, Ben Lee, and Nic Tarzia for their service to the Board of Education and Stamford Public Schools.

BOARD OF EDUCATION MEMBERS

Name	Title
Mrs. Lisa Butler	Asst. Secretary
Mr. Fritz G. Chery	Secretary
Mr. Joshua Esses	Fiscal Chair & Parliamentarian
Mr. Andy George	Vice President & Labor Chair
Dr. Rebecca Hamman	Policy Chair
Mrs. Jackie Heftman	President
Mr. Michael Hyman	Operations Chair
Ms. Versha Munshi-South	TLC Chair

**please note, one seat is currently vacant*



In Case You Missed It

- The Office of Family and Community Engagement recently hosted ***Understanding Restorative Practices: A Workshop for Families***. Restorative Practices supports a positive school climate by prioritizing the relationships and connections within a school community. Numerous SPS schools utilize restorative practices. To view a recording of the workshop, click [here](#).
- The 2021-22 [SPS Annual Report to the Community](#) is available online to view or download.
- The 2022-2027 [SPS District Strategic Plan](#) outlines our goals and priorities for the next five years and how we will measure our success. Thank you to the teachers, administrators, support staff, parent groups, community groups and elected officials who contributed their time to this plan.
- Winter brings the possibility of [closings, delays, and early dismissals](#) due to inclement weather. Families should make sure their contact information is in [PowerSchool](#) to receive messages about closings and delays.



Thanks for reading. Visit our [website](#) for more information about Stamford Public Schools and [click here](#) to subscribe to the Superintendent's Weekly Message, the SPS Quarterly, and other notices from Stamford Public Schools.