

POPULATION & BOUNDARY STUDY

FEBRUARY 7, 2023



**SALT LAKE CITY
SCHOOL DISTRICT**
Your Best Choice

Excellence and Equity: every student, every classroom, every day



**SALT LAKE CITY
SCHOOL DISTRICT**
Your Best Choice

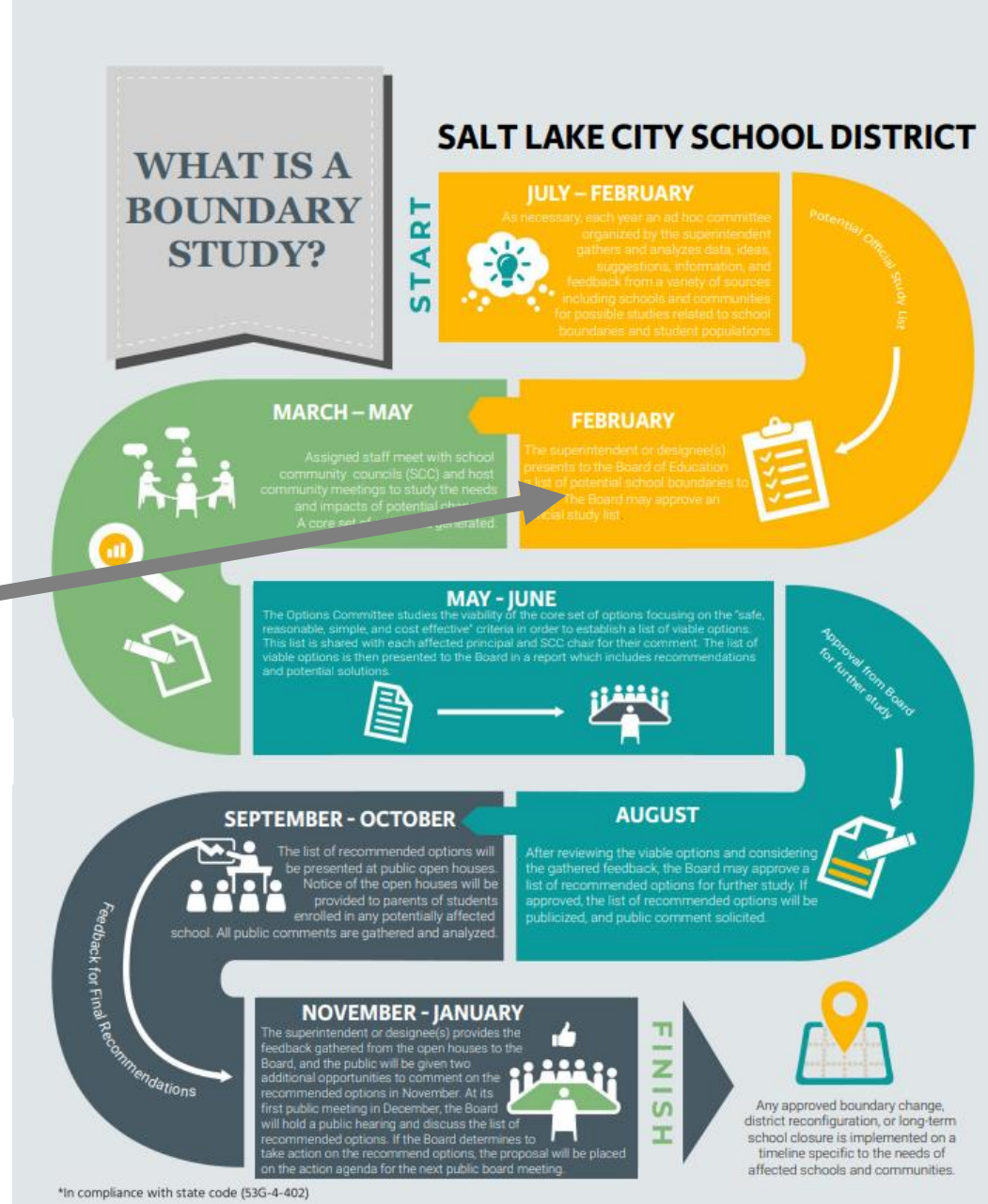
BOUNDARY AND PLANNING DIRECTOR

Brian Conley

Brian.Conley@slcschools.org



FEBRUARY
 The superintendent or designee(s) presents to the Board of Education a list of potential school boundaries to study. The Board may approve an official study list.

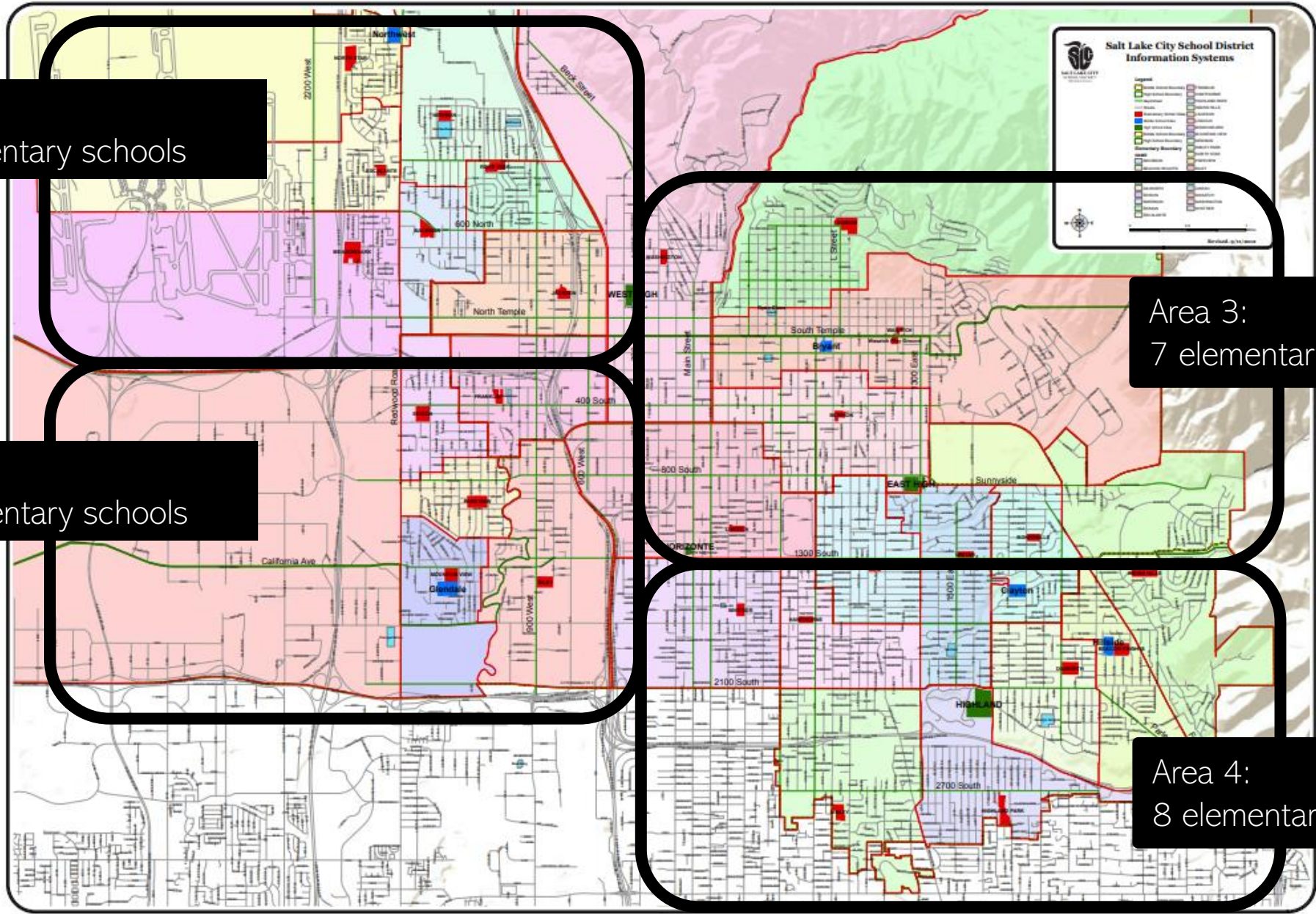


[Click here to download graphic](#)

12 CONSIDERATIONS

BOARD POLICY G-5

1. School enrollment data
2. Facility capacity and design
3. School feeder patterns
4. Federal, state, or court mandates
5. Demographics
6. Community input
7. Student safety
8. Transportation
9. Geographic features of the district
10. Special programs
11. Financial implications
12. Student educational opportunities and academic performance



Area 1:
7 elementary schools

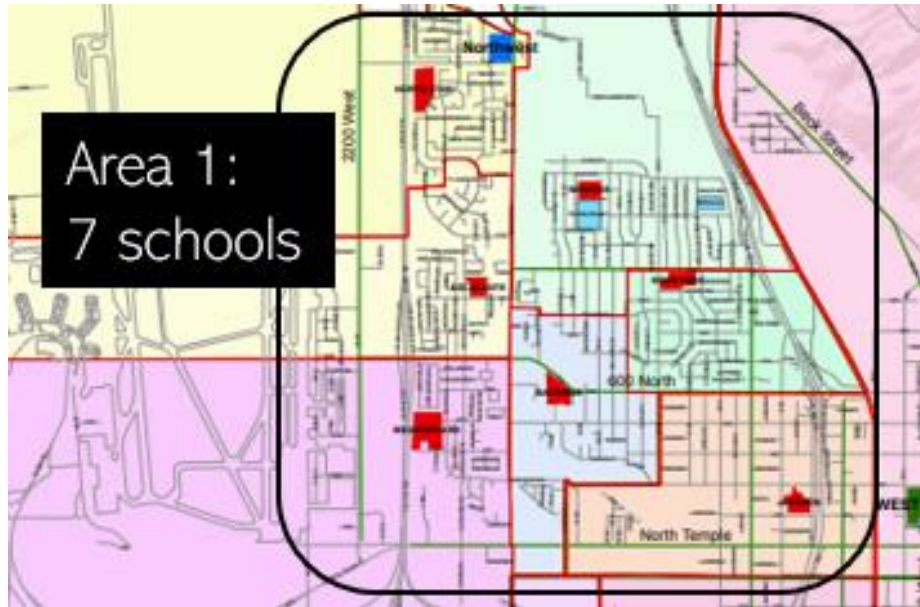
Area 3:
7 elementary schools

Area 2:
5 elementary schools

Area 4:
8 elementary schools

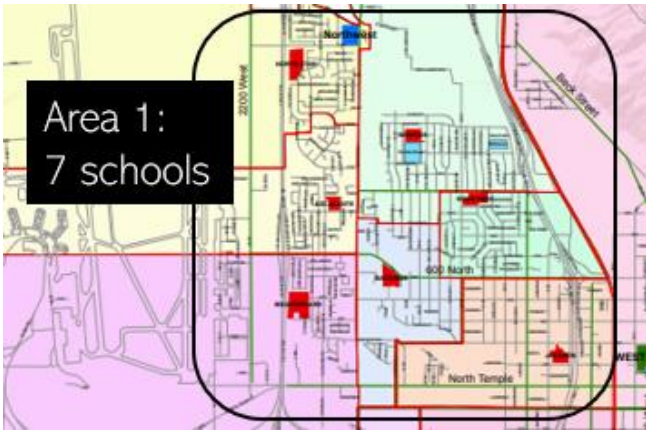
- Map Key:
- Elementary
 - Middle
 - High

AREA 1: SEVEN ELEMENTARY SCHOOLS



1. Backman
2. Escalante
3. Mary W. Jackson
4. Meadowlark
5. Newman
6. North Star
7. Rose Park

AREA 1: SEVEN ELEMENTARY SCHOOLS



Total number of K-6 students enrolled in Area 1:	2,300
Number of K-6 schools needed based on 550 students per school / 3 teachers per grade	4.18

Total number of K-6 students residing in Area 1:	2,425
Number of K-6 schools needed based on 550 students per school / 3 teachers per grade	4.41

AREA 2: FIVE ELEMENTARY SCHOOLS



1. Edison*
2. Franklin
3. Mountain View*
4. Parkview*
5. Riley*

** K-5 school feeding to Glendale Middle*

AREA 2: FIVE ELEMENTARY SCHOOLS (K-6 OPTION)



Total number of K-6 students **enrolled in Area 2: 1,577**

Number of K-6 schools needed based on 550 students
per school / 3 teachers per grade 2.87

Total number of K-6 students **residing in Area 2: 1,513**

Number of K-6 schools needed based on 550 students
per school / 3 teachers per grade 2.75

AREA 2: FIVE ELEMENTARY SCHOOLS (K-5 OPTION)



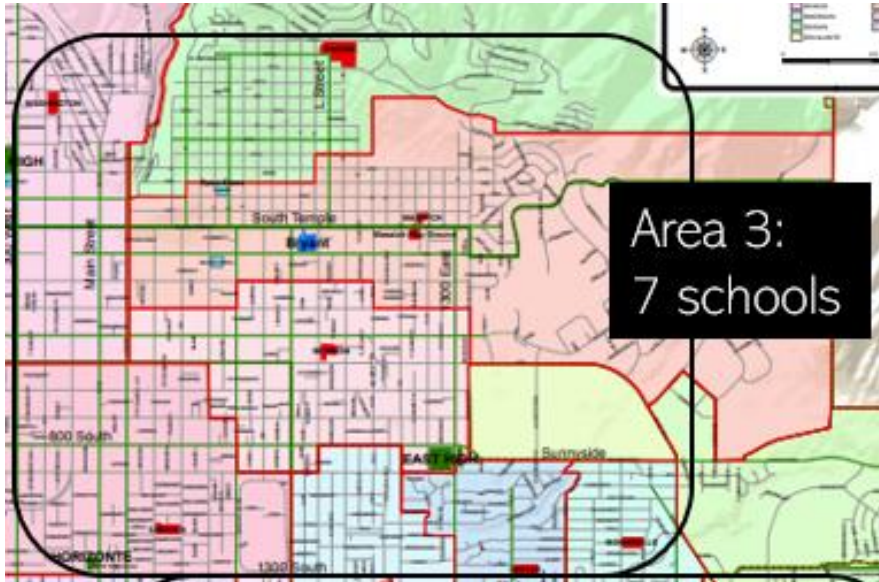
Total number of K-5 students **enrolled in Area 2: 1,535**

Number of K-5 schools needed based on 460 students per school / 3 teachers per grade 3.34

Total number of K-5 students **residing in Area 2: 1,471**

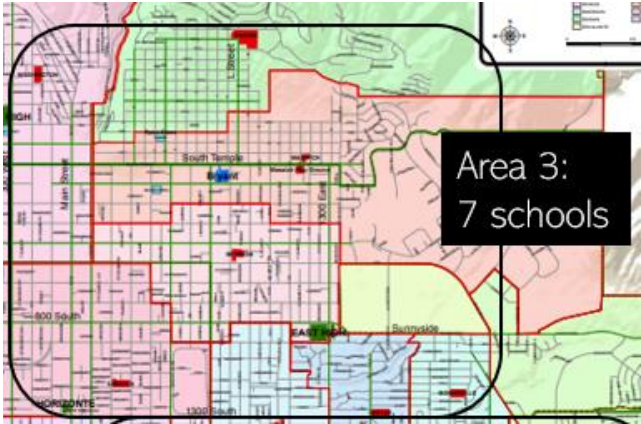
Number of K-5 schools needed based on 460 students per school / 3 teachers per grade 3.19

AREA 3: SEVEN ELEMENTARY SCHOOLS



1. M. Lynn Bennion
2. Bonneville
3. Ensign
4. Liberty
5. Uintah
6. Wasatch
7. Washington

AREA 3: SEVEN ELEMENTARY SCHOOLS



Total number students of K-6 enrolled in Area 3:	2,217
Number of K-6 schools needed based on 550 students per school / 3 teachers per grade	4.03

Total number of K-6 students residing in Area 3:	2,277
Number of K-6 schools needed based on 550 students per school / 3 teachers per grade	4.14

AREA 4: EIGHT ELEMENTARY SCHOOLS

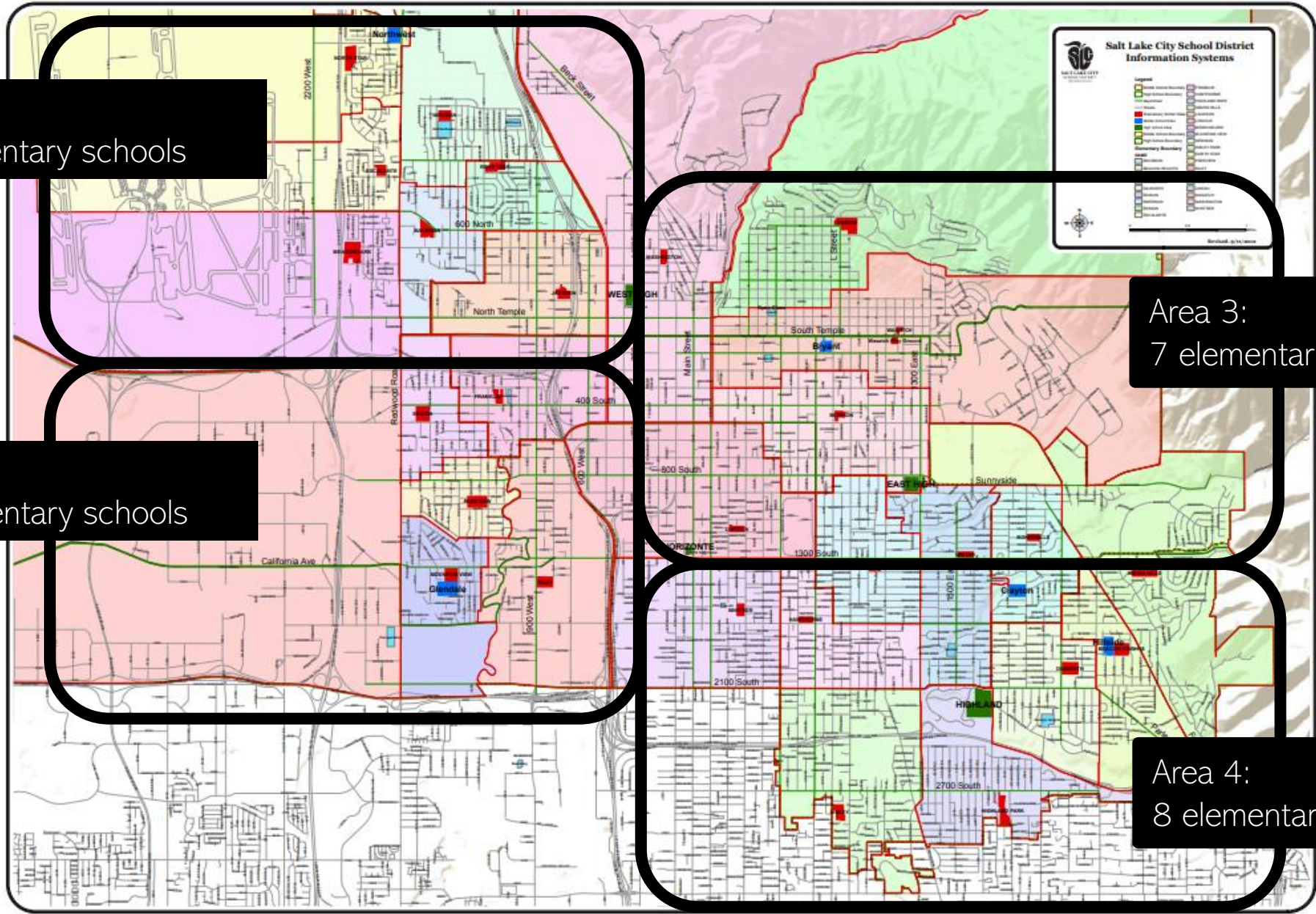


1. Beacon Heights
2. Dilworth
3. Emerson
4. Hawthorne
5. Highland Park
6. Indian Hills
7. Nibley Park (K-8)
8. Whittier

AREA 4: EIGHT ELEMENTARY SCHOOLS



Total number of K-6 students of enrolled in Area 4:	3,283
Number of K-6 schools needed based on 550 students per school / 3 teachers per grade	5.97
Total number of K-6 students residing in Area 4:	2,730
Number of K-6 schools needed based on 550 students per school / 3 teachers per grade	4.96



Area 1:
7 elementary schools

Area 3:
7 elementary schools

Area 2:
5 elementary schools

Area 4:
8 elementary schools

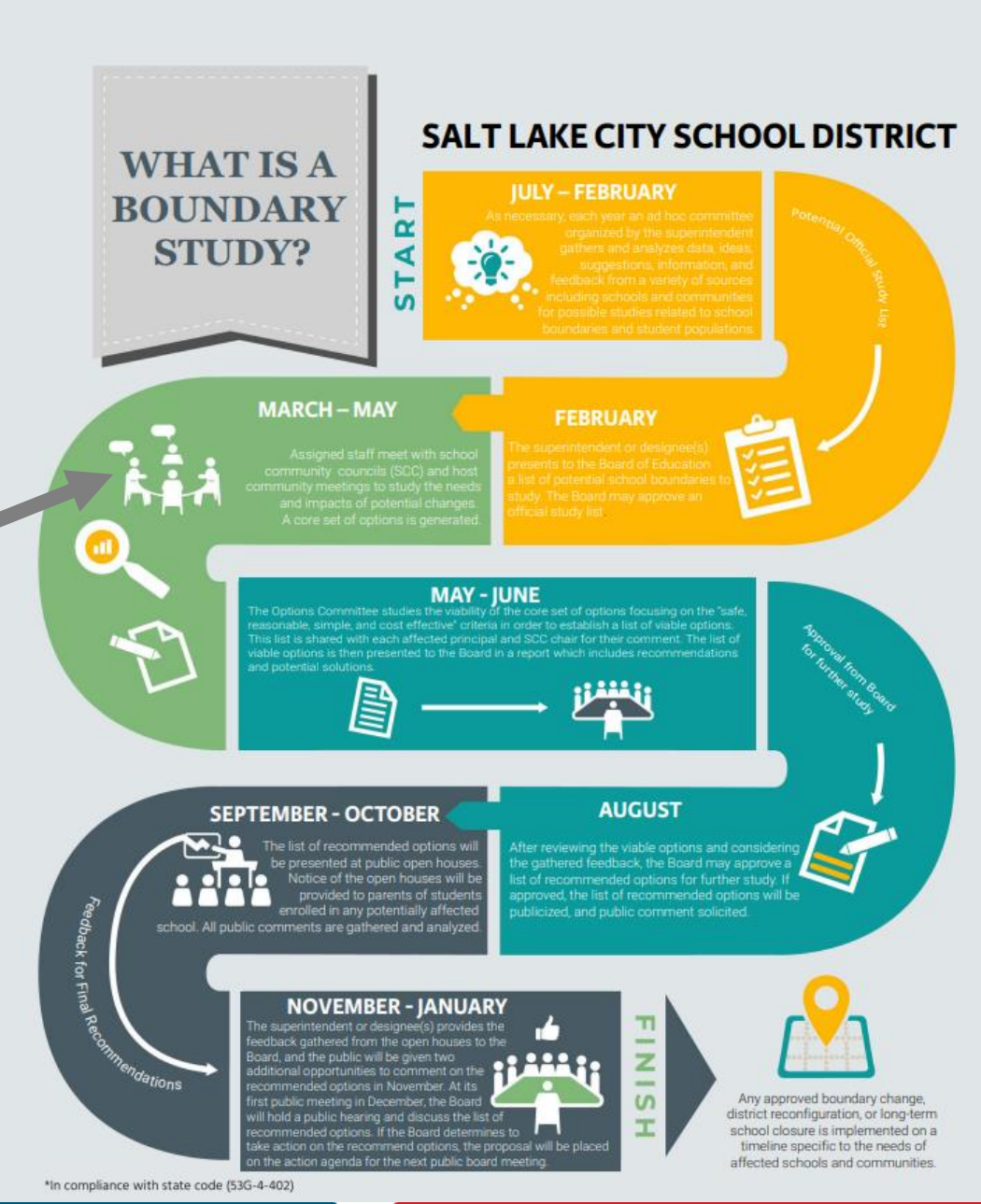
- Map Key:
- Elementary
 - Middle
 - High

RECOMMENDED ACTIONS:

- Study all elementary schools in Area 1 for potential boundary change, including possible closures.
- Study all elementary schools in Area 2 for potential boundary change, including possible closures.
- Study all elementary schools in Area 3 for potential boundary change, including possible closures.
- Study all elementary schools in Area 4 for potential boundary change, including possible closures.

March — May
Assigned staff meet with school community councils (SCC) and host community meetings to study the needs and impacts of potential changes. A core set of options is generated.

[Click here to download graphic](#)



SECTION II

Excellence and Equity: every student, every classroom, every day

SALT LAKE VIRTUAL ELEMENTARY

Started in 2021-2022 with ESSER funding as a *two-year pilot* to determine the fiscal and population viability of an online synchronous elementary school

- Over 250 students in 2021-2022
- October 1, 2022 enrollment: 59
- January 26, 2023 enrollment: 82
 - 62 In-district
 - 20 Out-of-district
 - 12 Enrolled since January 9

SALT LAKE VIRTUAL ELEMENTARY

- 1 site administrator
- 9 teachers + SpEd support
- 3 paraprofessionals (including 1 SpEd)
- 1 office professional
- 0.5 FTE teacher librarian
- 0.5 FTE art teacher
- 0.5 counselor
- 0.75 academic coaches
 - ELA .25 FTE
 - Math 0.5 FTE

Total number of employees: 16.25

Teacher to Student ratio: 1:10

FTE: Full-time equivalent

Excellence and Equity: every student, every classroom, every day



G:5 DISTRICT RECONFIGURATIONS & LONG-TERM SCHOOL CLOSURES

Section III. If the district determines that one of its virtual schools is no longer viable and contemplates its closure, because no boundary changes are necessary, the following shortened closure process will be used:

1. By **April 15th** of a given school year in which closure is contemplated for the upcoming school year:
 - a. The district will **notify parents** of enrolled students that the board is considering closing the virtual school.
 - i. Such notification will be made using email or the parent's preferred method of communication.
 - b. The district will **notify Salt Lake City Council members and the Mayor of Salt Lake City** of the proposed closure.

G:5 DISTRICT RECONFIGURATIONS & LONG-TERM SCHOOL CLOSURES

2. The board will provide an opportunity for public comment on the proposed virtual school closure during at least two public board meetings; and
3. The board will hold a public hearing on the proposed closure and provide public notice of the hearing in accordance with state law.

RECOMMENDED ACTIONS:

- Post requisite notice proposing that the Salt Lake Virtual Elementary School not continue operations beyond the 2022-23 school year.

SECTION III

Excellence and Equity: every student, every classroom, every day

STUDY OF THE FISCAL AND POPULATION VIABILITY OF A 4TH COMPREHENSIVE HIGH SCHOOL

Excellence and Equity: every student, every classroom, every day

RECOMMENDED ACTION:

- Authorize a fiscal and population viability study of a fourth comprehensive high school in the Glendale area.

THANK YOU

Excellence and Equity: every student, every classroom, every day

