







HSR ASSOCIATES INC.
100 MILWAUKEE STREET
LA CROSSE, WISCONSIN
PHONE: 608.784.1830
FAX: 608.782.5844
www.hsrassociates.com

Consultant:

Project Title: **BLACK HAWK SCHOOL DISTRICT
ADDITION & REMODEL**
Project Location: **202 EAST CENTER STREET
SOUTH WAYNE, WISCONSIN**
Sheet Title: **CONSTRUCTION PHASING PLAN**

HSR Project Number: **20012-1**

Project Date: **Issue Date**

Drawn By: **HSR**

Key Plan:

**REVIEW
NOT FOR
CONSTRUCTION**

Revisions:		
No.	Description	Date

Graphic Scale: **VARIES**

Last Update: **8/31/2022 10:56:01 AM**

G003

CONSTRUCTION PHASING:

CONSTRUCTION PHASING FOR PRELIMINARY PLANNING PURPOSES ONLY. CONTRACTOR TO VERIFY ALL ASSOCIATED TIMELINES. SELECTIVE DEMOLITION/RENOVATION ALLOWED OUTSIDE OF SPECIFIED TIME PERIODS IF COORDINATED WITH SCHOOL DISTRICT. BUILDING WILL BE FULLY OCCUPIED DURING CONSTRUCTION.

PHASE 1 **MARCH 2023 TO DECEMBER 2023
(10 MONTHS)**

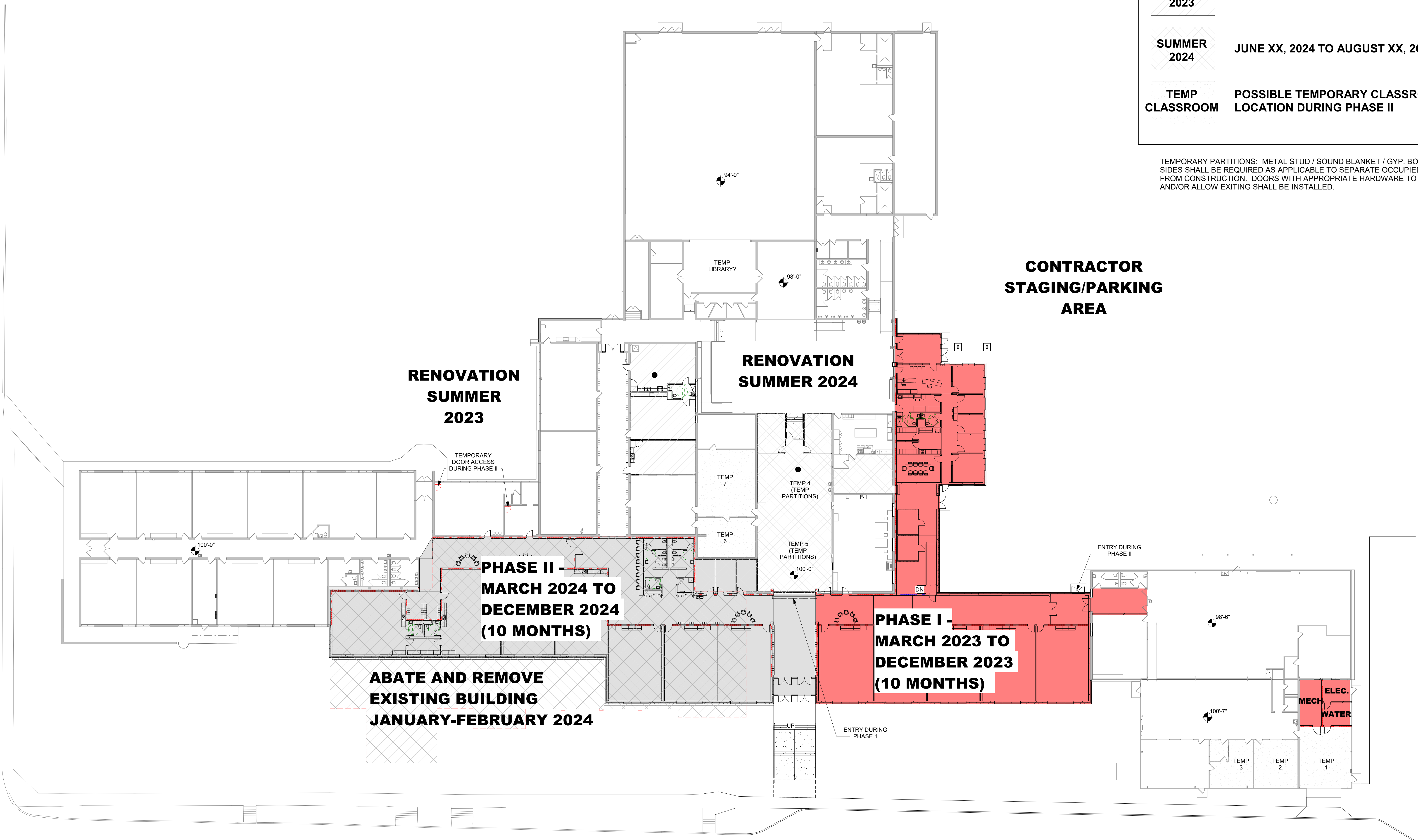
PHASE 2 **MARCH 2024 TO DECEMBER 2024
(10 MONTHS)**

SUMMER 2023 **JUNE XX, 2023 TO AUGUST XX, 2023**

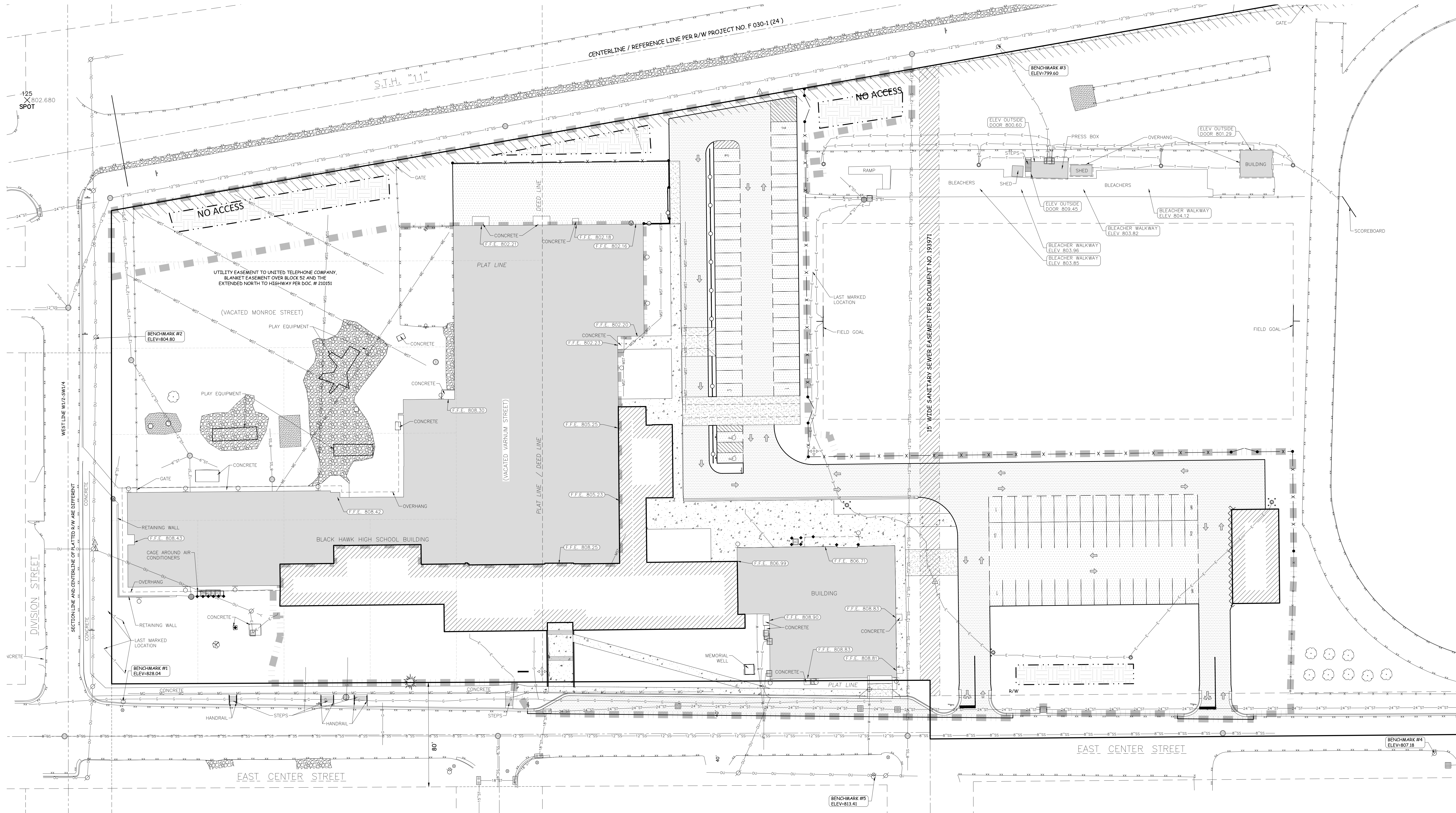
SUMMER 2024 **JUNE XX, 2024 TO AUGUST XX, 2024**

TEMP CLASSROOM **POSSIBLE TEMPORARY CLASSROOM
LOCATION DURING PHASE II**

TEMPORARY PARTITIONS: METAL STUD / SOUND BLANKET / GYP. BOARD BOTH SIDES SHALL BE REQUIRED AS APPLICABLE TO SEPARATE OCCUPIED AREAS FROM CONSTRUCTION. DOORS WITH APPROPRIATE HARDWARE TO SECURE AND/OR ALLOW EXITING SHALL BE INSTALLED.



1 CONSTRUCTION PHASING PLAN
1" = 20'-0"



BENCHMARK:

ELEVATIONS ARE REFERENCED TO NAVD 88 DATUM.

BENCHMARK #1
NORTHEAST FLANGE BOLT ON HYDRANT
LOCATED AT THE NORTHEAST CORNER OF THE
INTERSECTION OF DIVISION STREET AND
EAST CENTER STREET.
ELEVATION = 828.04

BENCHMARK #2
604 SPIKE ON WEST SIDE OF POWER POLE
LOCATED SOUTHEAST OF THE INTERSECTION OF
DIVISION STREET AND EAST MONROE STREET.
ELEVATION = 804.80

BENCHMARK #3
604 SPIKE ON NORTHWEST SIDE OF POWER POLE
LOCATED ON THE SOUTH SIDE OF S.T.H. "11", NORTH
OF THE BLEACHERS AND PRESS BOX.
ELEVATION = 799.60

BENCHMARK #4
RAILROAD SPIKE ON NORTH SIDE OF POWER POLE
LOCATED ON THE SOUTH SIDE OF EAST CENTER
STREET, APPROXIMATELY 385 FEET EAST OF THE
INTERSECTION OF EAST CENTER STREET AND SOUTH
WYOTA STREET.
ELEVATION = 807.18

BENCHMARK #5
EAST FLANGE BOLT ON HYDRANT
LOCATED AT THE SOUTHWEST CORNER OF THE
INTERSECTION OF EAST CENTER STREET AND
SOUTH WYOTA STREET.
ELEVATION = 813.41

UTILITY DISCLAIMER:

THE LOCATIONS, SIZES, AND TYPES OF UNDERGROUND PUBLIC AND PRIVATE UTILITIES OR SUBSTRUCTURES SHOWN HEREON WERE OBTAINED FROM VISUAL INSPECTION, FIELD MEASUREMENTS, AND/OR AS-BUILT PLANS. SANITARY SEWER AND STORM SEWER PIPE SIZES, INVERTS, DIRECTION, AND LOCATIONS BETWEEN MANHOLES ARE SUPPLEMENTED BY AS-BUILT PLANS AND/OR ESTIMATED BASED ON FIELD OBSERVATIONS PRIOR TO CONSTRUCTION IN THE VICINITY OF ANY UTILITIES SHOWN HEREON. IT IS RECOMMENDED THAT THE LOCATIONS, DEPTHS, AND SIZES BE FIELD VERIFIED. THE LOCATIONS SHOWN HEREON ARE ONLY APPROXIMATE, WITH POSSIBILITY THAT ADDITIONAL UTILITY LINES NOT DISCOVERED, OR MARKED, DURING THE SEARCH OF RECORDS AND THE FIELD SURVEY MAY EXIST. ANY CONTRACTOR USING THE INFORMATION SHOWN HEREON IS HEREBY FOREWARNED THAT ANY EXCAVATION UPON THIS SITE MAY RESULT IN THE DISCOVERY OF ADDITIONAL UNDERGROUND UTILITIES NOT SHOWN HEREON. IN GENERAL, UNDERGROUND UTILITY LOCATIONS ARE SHOWN FROM UTILITY MARKINGS BY OTHERS, AND/OR AS-BUILT PLANS, PROVIDED BY OTHERS. POINT OF BEGINNING MAKES NO WARRANTY OF ANY KIND, EXPRESS OR IMPLIED, WITH RESPECT TO THE EXISTING UTILITIES SHOWN HEREON, AND BELIEVES THAT THE INFORMATION CONTAINED HEREIN IS RELIABLE AND GENERALLY ACCURATE FOR THE PURPOSE INTENDED.

GENERAL NOTES:

- CONTACT DIGGER'S HOTLINE 5 WORKING DAYS PRIOR TO THE START OF DEMOLITION/CONSTRUCTION.
- GRADE, LINE, AND LEVEL TO BE REVIEWED IN THE FIELD BY THE CONSTRUCTION MANAGER.
- ALL REQUIRED EROSION CONTROL MEASURES SHALL BE INSTALLED AND MAINTAINED IN ACCORDANCE WITH LOCAL MUNICIPAL AND DEPARTMENT OF NATURAL RESOURCES REGULATIONS.
- SEE SHEET FOR ALL REQUIRED EROSION CONTROL ELEMENTS.
- ANY EXISTING UTILITIES NOT SHOWN ON THIS DOCUMENT WHICH NEED TO BE REMOVED, RELOCATED AND OR ADJUSTED SHALL BE THE RESPONSIBILITY OF THE SITE GRADING CONTRACTOR AND INCLUDED IN THE BASE BID CONTRACT.
- VERIFY THE LOCATION OF ALL EXISTING UTILITIES PRIOR TO THE START OF DEMOLITION/CONSTRUCTION.
- BIDDERS SHALL VISIT THE SITE AND REVIEW EXISTING CONDITIONS PRIOR TO THE BID DATE.
- PRIOR TO STARTING WORK, VERIFY WITH THE LOCAL AUTHORITIES THAT ALL REQUIRED PERMITS HAVE BEEN ACQUIRED.
- COORDINATE CONSTRUCTION IN THE RIGHT OF WAY WITH THE LOCAL AUTHORITIES.
- PROVIDE PROPER BARRICADES, SIGNS, AND TRAFFIC CONTROL TO MAINTAIN THRU TRAFFIC ALONG ADJACENT STREETS IN ACCORDANCE WITH LOCAL MUNICIPAL REQUIREMENTS.
- SIDEWALK JOINTS SHALL BE INSTALLED AS INDICATED OR AS APPROVED BY THE CONSTRUCTION MANAGER.
- ALL CONCRETE SAWCUTS SHALL BE AT AN EXISTING JOINT.
- ALL NEW CONCRETE PAVEMENT AND CURB ON ADJACENT STREET SHALL BE TIED IN ACCORDANCE WITH DETAIL ON SHEET.
- ALL GENERAL LANDSCAPE AREAS SHALL BE SEEDED, FERTILIZED, AND CRIMP HAY MULCHED IN ACCORDANCE WITH THE PROJECT SPECIFICATIONS.

PAVEMENT HATCH PATTERNS:

PROPOSED STANDARD ASPHALT PAVEMENT		XXX
PROPOSED HEAVY DUTY ASPHALT PAVEMENT		XXX
PROPOSED STANDARD CONCRETE PAVEMENT		XXX
PROPOSED REINFORCED CONCRETE PAVEMENT		XXX

KEYNOTES:

- | | | | | | |
|--|--|---|--|---|--|
| 1. THICKENED EDGE WALK | | 15. HANDICAP PARKING SIGN | | 29. 6' DECORATIVE FENCE (AMERISTAR ECHELON OR APPROVED EQUAL) | |
| 2. END THICKENED EDGE WALK | | 16. ADA ACCESS ROUTE | | 30. 20' SLIDING GATE IN 6' DECORATIVE FENCE | |
| 3. CONCRETE SIDEWALK | | 17. INSTALL SALVAGED SIGN | | 31. VEHICLE GUARDRAIL | |
| 4. 24" CONCRETE CURB & GUTTER | | 18. INSTALL SALVAGED FLAG POLE | | | |
| 5. 24" MOUNTABLE CURB & GUTTER | | 19. CONCRETE BOLLARD | | | |
| 6. CURB TAPER | | 20. EXISTING TREE TO REMAIN | | | |
| 7. 5' CURB TRANSITION (TIE TO EXISTING CURB) | | 21. STOP SIGN | | | |
| 8. CONCRETE STAIRS | | 22. DO NOT ENTER SIGN | | | |
| 9. CONCRETE STOOP (SEE STRUCTURAL PLANS) | | 23. 6' CHAIN LINK FENCE | | | |
| 10. CONCRETE SPEED HUMP | | 24. 6' x 10' GATE | | | |
| 11. RETAINING WALL | | 25. 6' x 4' PEDESTRIAN GATE | | | |
| 12. PARKING LOT STRIPING | | 26. CONCRETE DRIVEWAY APRON | | | |
| 13. DIRECTIONAL ARROW | | 27. DUMPSTER AREA | | | |
| 14. HANDICAP PARKING STALL | | 28. 4' DECORATIVE FENCE (AMERISTAR ECHELON OR APPROVED EQUAL) | | | |

