

2022 BOND PROJECTS – BOARD UPDATE

Valley Oaks Elementary School

Spring Branch Independent School District
 SBISD Project No. 67303
 PBK Project No. 220233
 December 31, 2022



1) **PROJECT TEAM:**

Owner:	Spring Branch ISD	Assoc. Superintendent for Ops:	Travis Stanford
		Project Manager:	Geoff Bay
Architect:	PBK	Partner-in-Charge:	Brandon Ross
		Architect / Client Executive:	Philip Stewart
		Project Manager:	Gloria Carlos
CM @ Risk:	Durotech, Inc.		

2) **GENERAL SCOPE OF WORK:**

- Classroom additions, Dining Commons expansion and parking spaces extension while maintaining school operations during construction.

3) **BOND PLAN PROJECT TIMELINE:**

- The following project is included in year one of the 2022 bond program. The Project Advisory Team is involved from the Schematic Design (SD) to the Design Development (DD) phase.

SCHEMATIC DEVELOPMENT	JULY 2022 – SEPTEMBER 2022
DESIGN DEVELOPMENT	SEPTEMBER 2022 – NOVEMBER 2022
CONSTRUCTION DOCUMENTS	NOVEMBER 2022 – FEBRUARY 2023
ISSUE FOR PROPOSAL	FEBRUARY 2023 – MARCH 2023
BIDDING / BOARD APPROVAL	MARCH 2023 – JULY 2023
CONSTRUCTION PHASE	JULY 2023 – SEPTEMBER 2024
CLOSEOUT	OCTOBER 2024

← Current Point

4) **PROJECT STATUS OVERVIEW:**

- All PAT presentations are complete.
- Design Development phase has been completed.
- Construction Documents are in progress.

5) **PAST 2-4 WEEKS PROJECT HIGHLIGHTS / MILESTONES:**

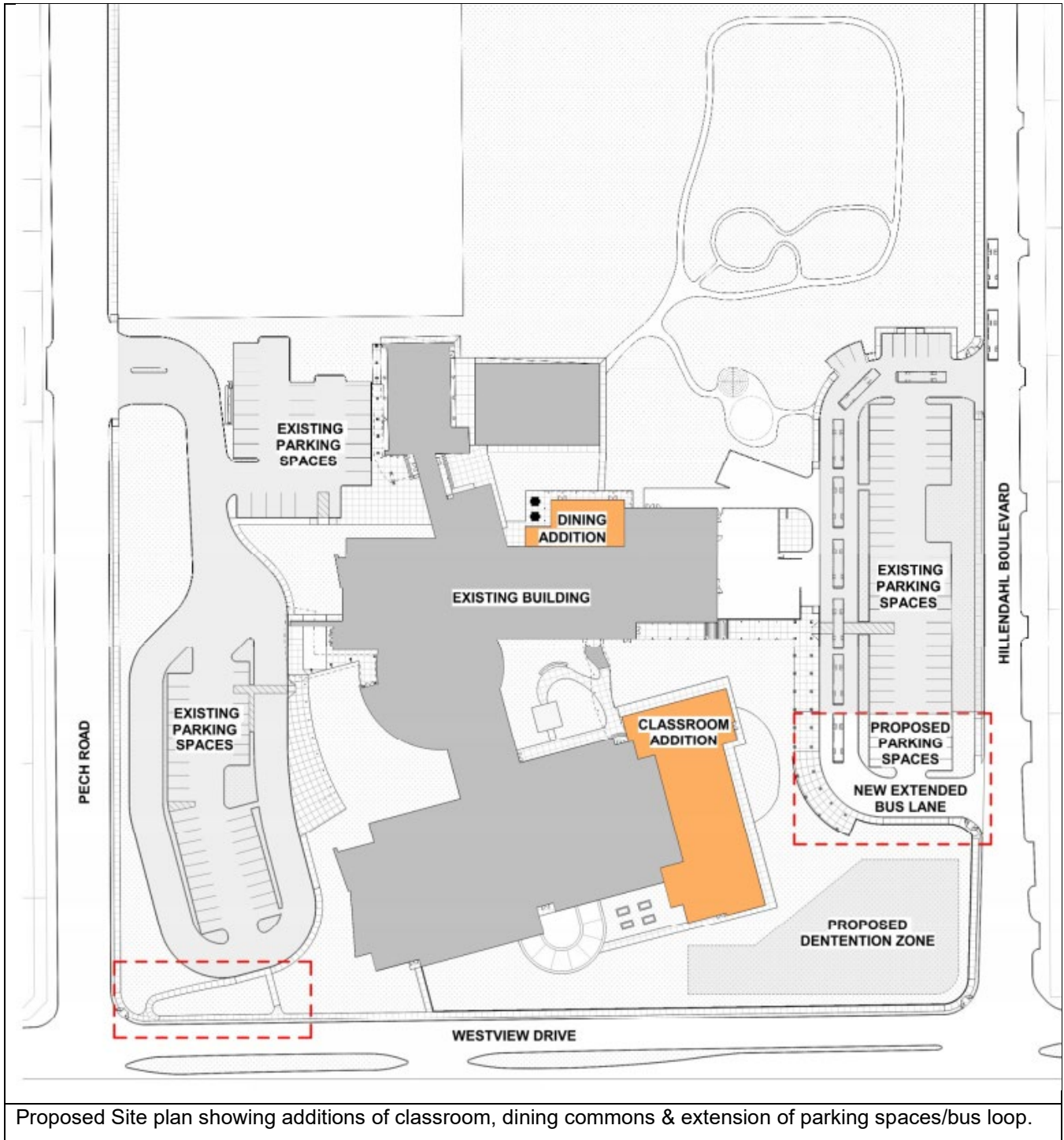
The following activities have taken place:

- Project page-turn with facilities for 50% construction documents has been performed.

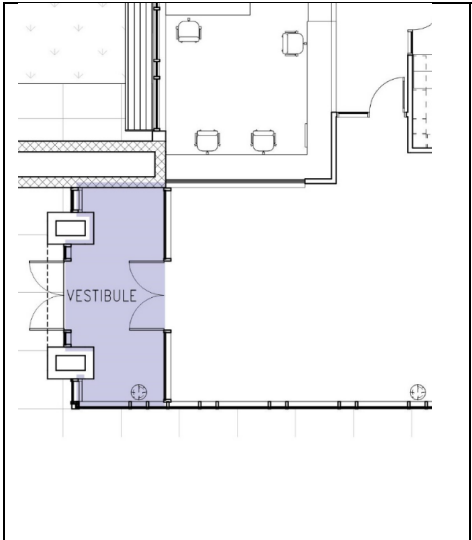
6) **NEXT 2-4 WEEKS PROJECT HIGHLIGHTS / MILESTONES:**

- Traffic Impact Analysis (TIA) Valley Oaks ES has been performed.
- PBK to submit 75% construction documents to SBISD and Durotech for review.

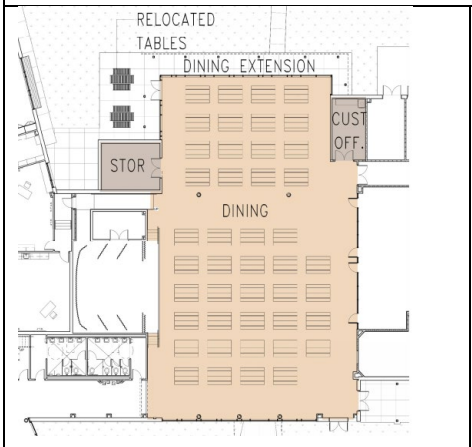
7) **PHOTOGRAPHS:**



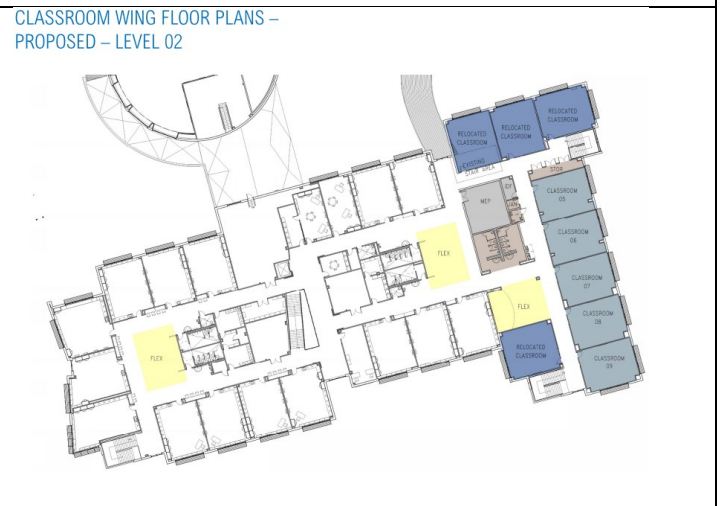
Proposed Site plan showing additions of classroom, dining commons & extension of parking spaces/bus loop.



Security Vestibule at the Main Entry.



Expansion of the dining area.



Proposed floor plans of classroom addition.



Proposed elevations of classroom addition.



Proposed elevations of classroom addition.