



*****Attention Parents and Caregivers*****

If your school has announced a collaboration to bring the Signs of Suicide program to your school and you want to know.....

What are the differences between normal teenage ups and downs and a mental health concern?

What are the warning signs for depression and suicide?

What are the risk factors that can affect teens?

What are the steps to take if you have a concern about your child's emotional needs?

Then join us and Nationwide Children's Hospital for a virtual presentation of education and discussion about these topics and more.

Please see next page for offerings this school year. We hope to see you at one!



For more information, you may contact Nationwide Children's Hospital Suicide Prevention team at suicideprevention@nationwidechildrens.org

**** All parents that participate will have the opportunity to be entered into a drawing for a \$20 gift card to Kroger! ****

Monday, September 20th, 2021 from 5:30-6:30pm

Join Zoom Meeting

<https://zoom.us/j/95807029471?pwd=SNvTVJObHFkOE16VHdBbFFkV29HQTo9>

Meeting ID: 958 0702 9471, Passcode: 009673, One tap mobile +16699009128

Tuesday, October 19th, 2021 from 6:00pm-7:00pm

Join Zoom Meeting

<https://zoom.us/j/95226073529?pwd=TXpYMzA2bksZ1pKU2xXK1BLVmMvZz09>

Meeting ID: 952 2607 3529, Passcode: 382730, One tap mobile +1301715859

Friday, October 22nd, 2021 from 12:00-1:00pm

Join Zoom Meeting

<https://zoom.us/j/98381884529?pwd=R3lnWUowTEk4OVVjdGxKLO5YaklzZz09>

Meeting ID: 983 8188 4529, Passcode: 507560, One tap mobile +13017158592

Wednesday, November 17th, 2021 from 7:00-8:00pm

Join Zoom Meeting

<https://zoom.us/j/98993231410?pwd=QWNkblkzWDFLYWFCTWNjcUR4ZmtZdz09>

Meeting ID: 989 9323 1410, Passcode: 363615, One tap mobile +13126266799

Thursday, December 16th, 2021 from 5:30-6:30pm

Join Zoom Meeting

<https://zoom.us/j/99766587134?pwd=SolRRU82RjFCUXFOZUFYemFmSVBiZz09>

Meeting ID: 997 6658 7134, Passcode: 551753, One tap mobile, +16465588656

Monday, January 17th, 2022 from 6:00-7:00pm

Join Zoom Meeting

<https://zoom.us/j/98242788329?pwd=dzZvZlhTbEZBbolMTHBJa3c2QWQ3UT09>

Meeting ID: 982 4278 8329, Passcode: 101532, One tap mobile +13017158592

Tuesday, February 15th, 2022 from 7:00-8:00pm

Join Zoom Meeting

<https://zoom.us/j/94442401476?pwd=eEt5NoMwbmlQSzVIVEwrRDN1bitiUT09>

Meeting ID: 944 4240 1476, Passcode: 405885, One tap mobile +12532158782

Friday, February 25th, 2022 from 12:00-1:00pm

Join Zoom Meeting

<https://zoom.us/j/91227371757?pwd=czQ2R3NwdU5sYmpUZjJCTHFQZzFpZz09>

Meeting ID: 912 2737 1757, Passcode: 582614, One tap mobile +13462487799

Wednesday, March 16th, 2022 from 5:30-6:30pm

Join Zoom Meeting

<https://zoom.us/j/98208826938?pwd=TkFlMXpWQ3IxYUIxSohMVWh2Ky85QT09>

Meeting ID: 982 0882 6938, Passcode: 074953, One tap mobile +12532158782

Thursday, April 14th, 2022 from 6:00-7:00pm

Join Zoom Meeting

<https://zoom.us/j/94229911328?pwd=ckpwTWsvQXdyNVVxcndSZ29obmgxQT09>

Meeting ID: 942 2991 1328, Passcode: 743995, One tap mobile +16465588656



*****Atención Padres y Cuidadores*****

Si tu escuela ha anunciado una colaboración para traer al programa de Signs of Suicide (Signos de Suicidio) a las aulas y quieres saber...

¿Cuáles son las diferencias entre altibajos emocionales de adolescentes y un problema de salud mental?

¿Cuáles son las señales de advertencia para la depresión y el suicidio?

¿Qué y cuáles son los factores de riesgo que afectan a los adolescentes?

¿Qué pasos tomar si estas preocupado/a sobre la salud mental de tu adolescente?

Lunes, 22 de Noviembre del 2021 | 6:00-7:00PM

Únanse por Zoom por medio de este link

<https://zoom.us/j/96206544504?pwd=cENkNjQrRGM0WWZQZWJuTEliRXEwQT09>

ID: 962 0654 4504

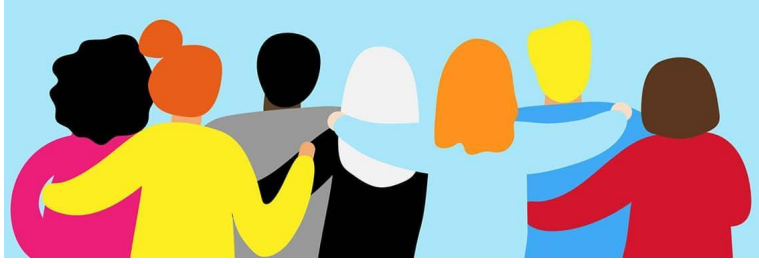
Contraseña: 201079

One tap mobile

+12532158782

Entonces acompañanos junto con el hospital Nationwide Children's para una presentación y plática virtual sobre la educación de estos temas y más.

**** Todos los padres, madres, y cuidadores tendrán la oportunidad de entrar a una rifa para una tarjeta de Kroger con valor de \$20! ****



Para más información, favor de contactar al equipo de prevención de suicidio por correo electrónico:
suicideprevention@nationwidechildrens.org