

2023-2024

MATH ELECTIVES

FOR STUDENTS WHO HAVE COMPLETED
MATH 2 (FORMERLY GEOMETRY)

ADVANCED ALGEBRA

This course continues the exploration of mathematical functions including quadratic, exponential, cubic, hyperbolic, absolute value, and square root functions along with their graphs and applications. We will also study circles, inequalities, systems of equations, logarithms, inverses, and polynomials. This class is **required to enroll in Pre-Calculus/Trigonometry (MTH 111/112 college credit)** the following year.

CTE MATH

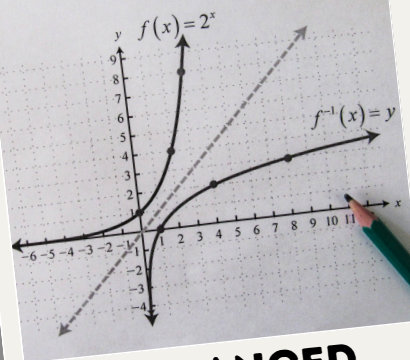
This course is focused on math skills needed for various trades; **architecture/construction, culinary arts, health science, automotive, and manufacturing.** Topics include arithmetic fundamentals, percent and proportion applications, the metric system, conversions, practical geometry, measurement applications, signed numbers, formula evaluation, and algebraic and trigonometric functions.

DATA SCIENCE

This project-based course that brings together methods, concepts, and current practices in the growing field of data science, including **statistical inference, financial modeling, data visualization, social networks, sports statistical analysis, and data engineering.**

FINANCIAL ALGEBRA

This course blends personal finance topics with relevant mathematical concepts such as systems of equations, inequalities, exponential functions, modeling, and statistical analysis. Financial Algebra is a great course to start learning about **money management, investing, mortgages, credit, and insurance.**



**ADVANCED
ALGEBRA**



CTE MATH



DATA SCIENCE



**FINANCIAL
ALGEBRA**